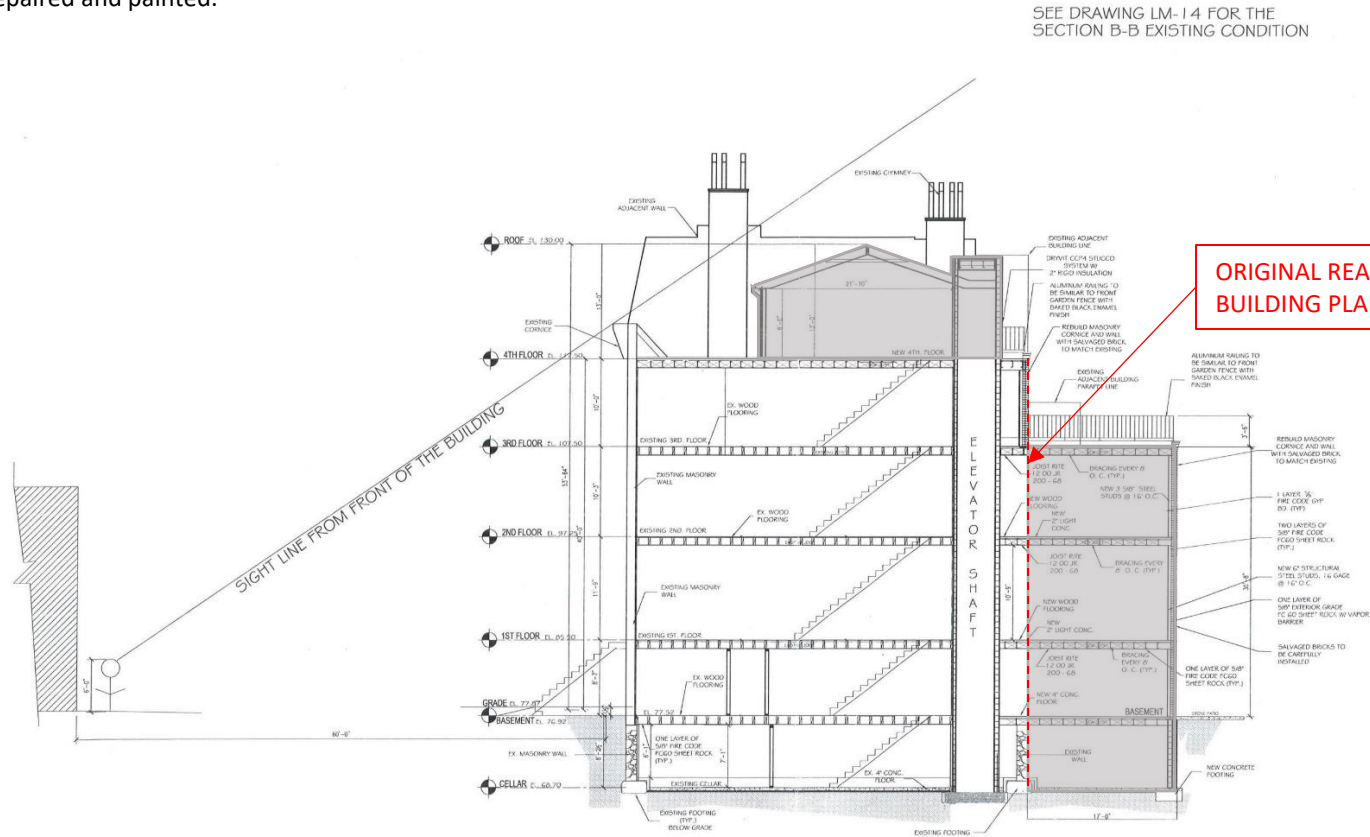


PROJECT DESCRIPTION:

The project consisted of the construction of a rooftop addition setback from the top story of the historic rear façade. It is clad in brick at the side elevations and stucco at the front and rear elevations with a metal gable roof.

A third story roof terrace and fourth story roof top were also included as an addition along with an extension of the brick chimney on the eastern side of the roof.

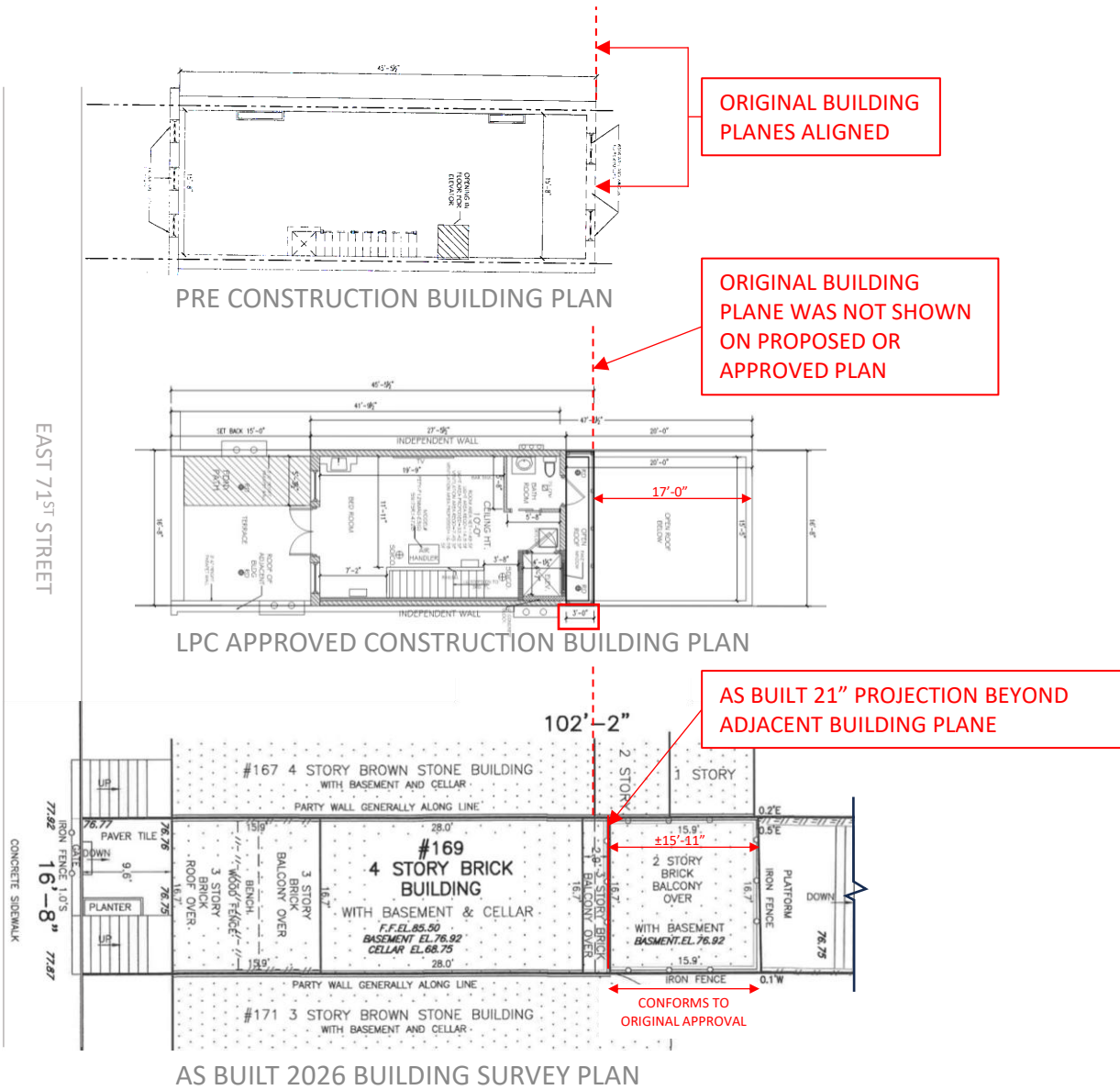
The front and rear windows were replaced and the front façade brownstone was repaired and painted.



LPC APPROVED CONSTRUCTION BUILDING SECTION



PRE CONSTRUCTION – SOUTH STREET FAÇADE



AS BUILT