

125 EAST 64<sup>th</sup>

STREET

---

LPC PRESENTATION

5/4/2026

PREPARED BY: ■ **Ronnette Riley** *Architect*





# 125 E 64th STREET

UPPER EAST SIDE HISTORIC DISTRICT

---

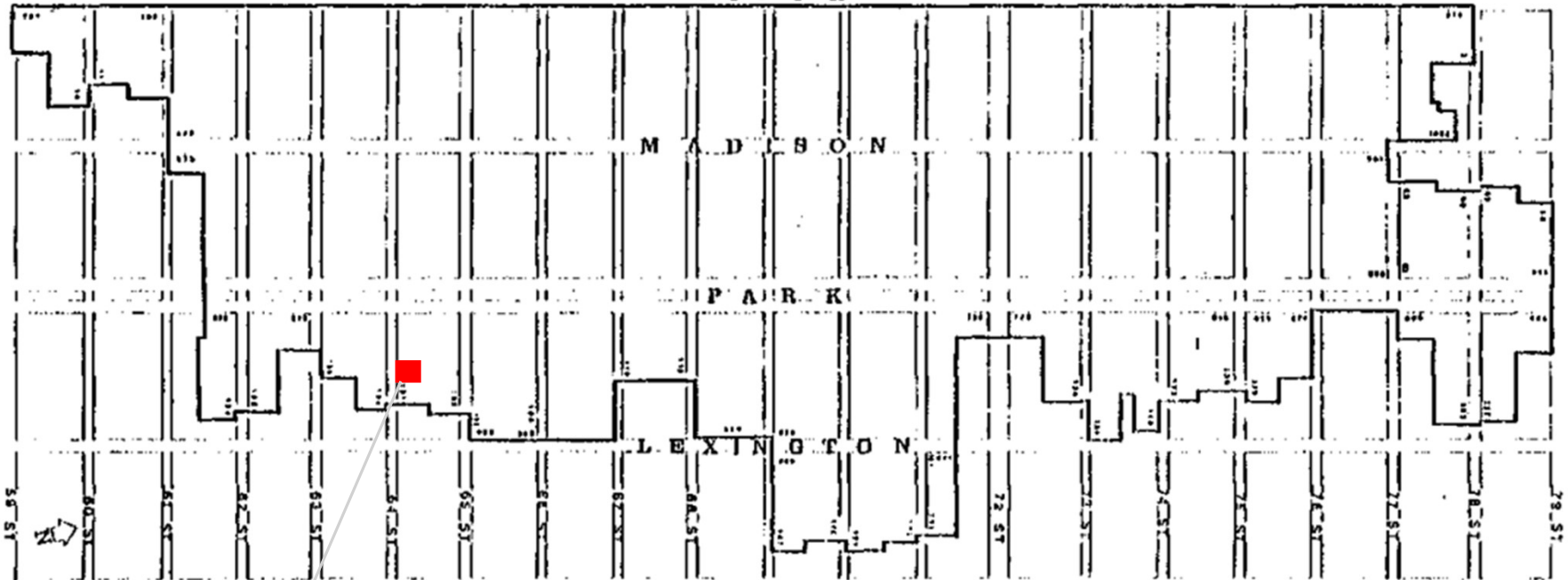
Proposed replacement of 64<sup>th</sup> Street  
windows:

2 at ground floor

6 at upper floors

UPPER EAST SIDE HISTORIC DISTRICT

F I F T H



LANDMARKS PRESERVATION COMMISSION

PUBLIC HEARING JUNE 10, 1979

DESIGNATED MAY 10, 1981

125 EAST 64<sup>th</sup>  
STREET

■ Ronnette Riley *Architect*



## Designation Photo:

MAY 19<sup>th</sup> 1981



*Tax Photo 1940's*

■ **Ronnette Riley** *Architect*

TOP FLOORS - 6 EXISTING WINDOWS



Removals 6

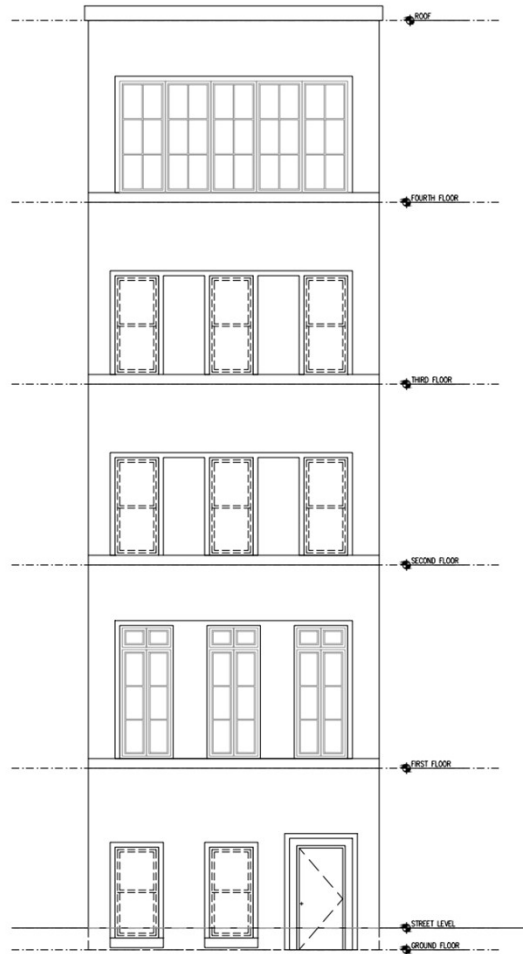
Removals 2

GROUND FLOOR - 2 EXISTING WINDOWS

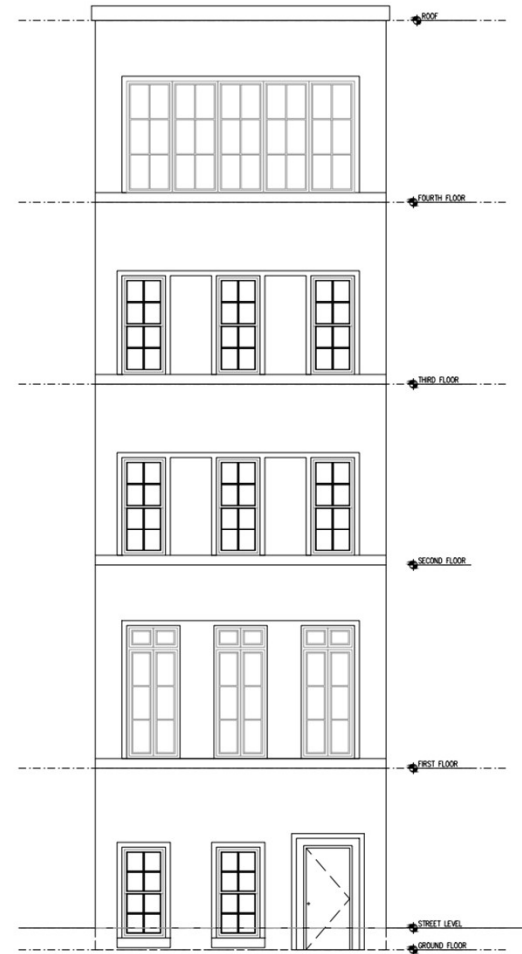


# FRONT ELEVATIONS

125 EAST 64<sup>th</sup> STREET



1 DEMOLITION FRONT ELEVATION (WINDOW)  
1/4"=1'-0"



2 PROPOSED FRONT ELEVATION (WINDOW)  
1/4"=1'-0"

CLOSE UP OF UPPER WINDOWS, EXISTING

---



CLOSE UP OF 2 GROUND FLOOR WINDOWS, EXISTING

---

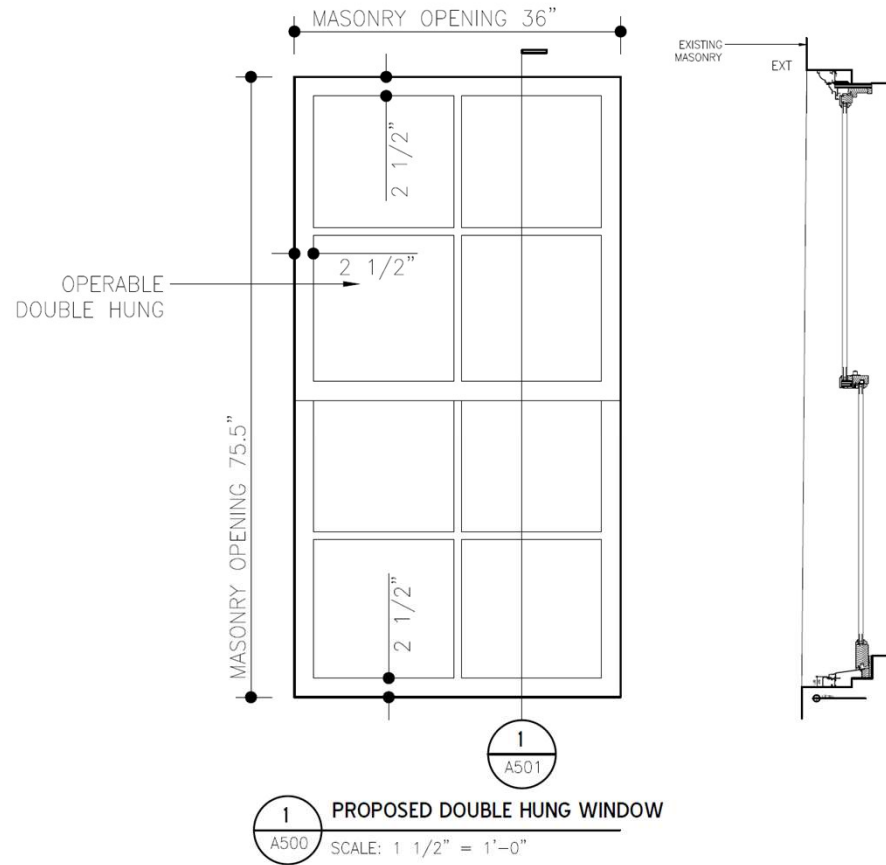
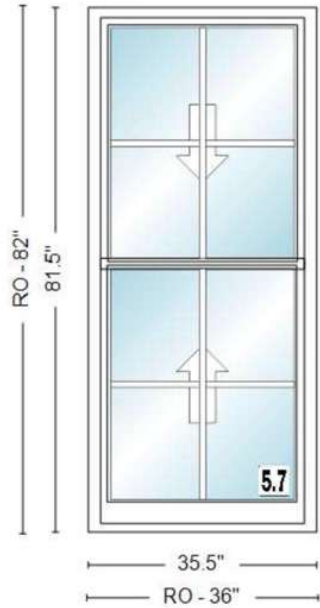


## 4-OVER-4 GRID WINDOWS MOCKUP



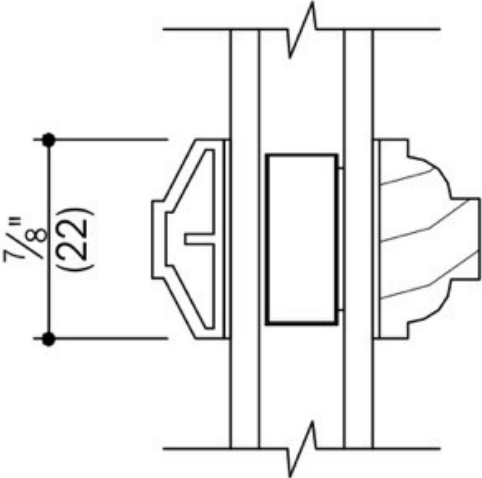
# PROPOSED WINDOWS

4-over-4 grid windows in metal-clad wood  
Anderson E series with an A754 casing in Black.

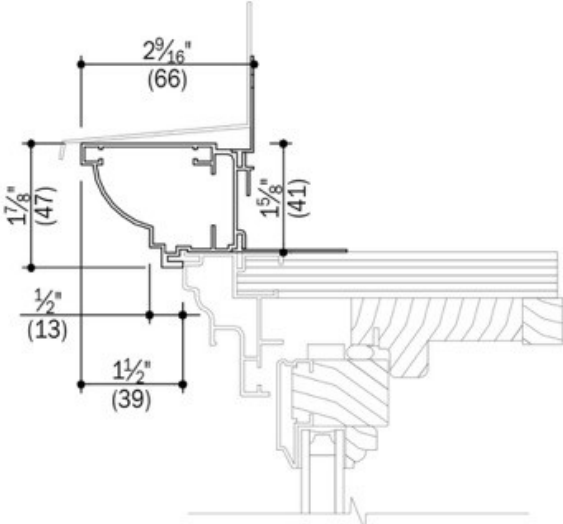


# BRICK MOULD

Double Hung & Single Hung Windows

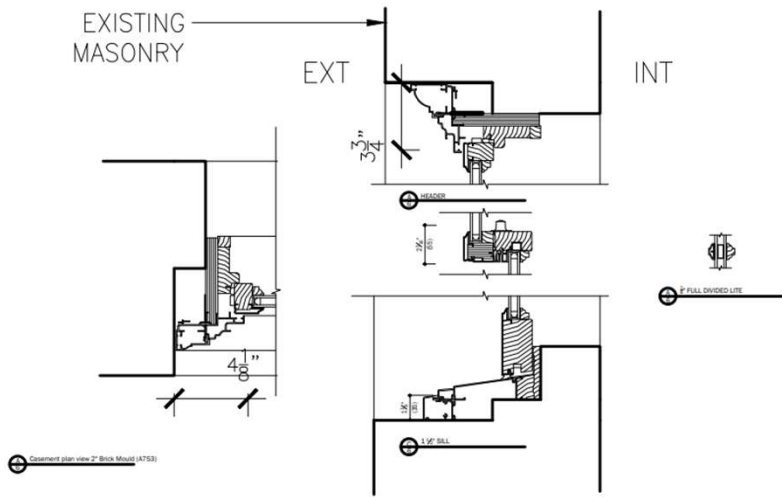


7/8" Int. Colonial, Ext. Chamfer  
Full Divided Light

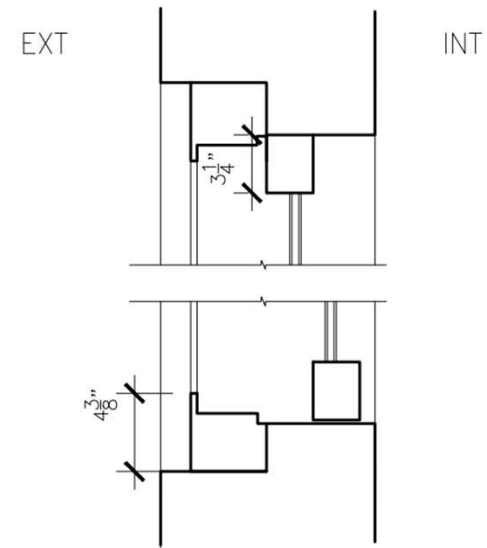


2" Ovolo Brick Mould (A754)





**1** WINDOW DETAILS - PROPOSED  
 A501 ANDERSEN ALUM. CLAD WOOD BLACK



**2** EXISTING FOR REFERENCE  
 A501 ALUMINUM, WHITE

Next door neighbors with grid windows

6 Over 6



124 E 64<sup>th</sup> Street

6 Over 6



127 E 64<sup>th</sup> Street