



Ruppert Park Update

Located at 2nd Avenue between E 90th Street and E 91st Street,
in the Borough of Manhattan.

Community Board 8 Parks and Waterfront Committee
January 8, 2026

Eric Boorstyn, AIA - NYC Parks, Deputy Commissioner for Capital Projects
Alex Zervos - NYC Parks, Project Manager

Total Budget: **\$8.894 M (Park)**
 \$4.5 M (Public Restroom Building)

Project Size: 1 acre

Parks

Park Reconstruction Timeline

Design **COMPLETE**

- SWPPP Approval: September 2025
- Legal Approval: December 2025

Procurement

- Procurement Initiation: January 2026
- Tentative Bid Release & Opening: Spring 2026
- Tentative Contract Registration: Summer 2026

Construction

- **Anticipated Start Date: Summer 2026**
- Anticipated Completion: Summer 2027

Public Restroom Building Construction Timeline

Design

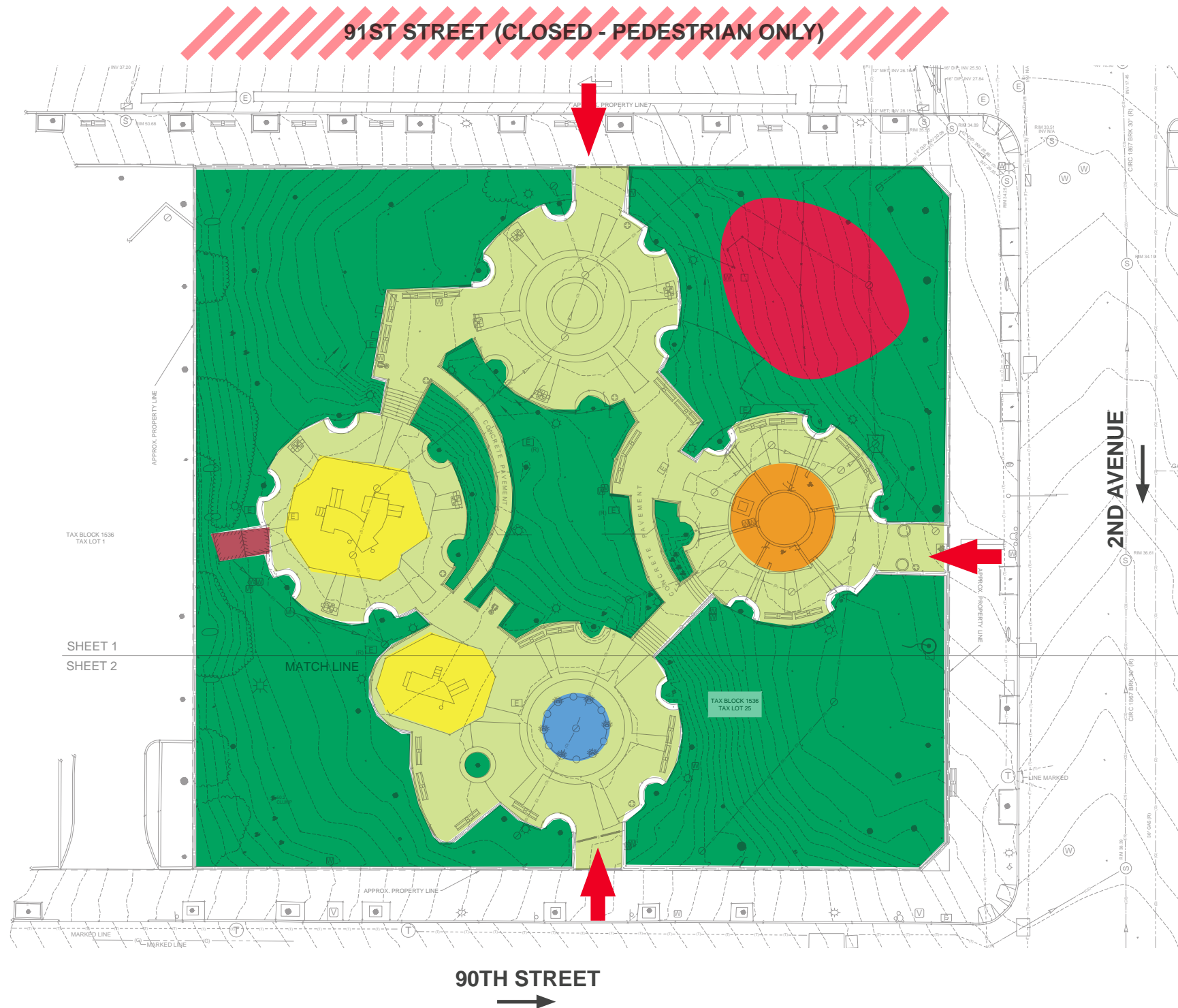
- Start Date: December 2025
- Anticipated Completion: Fall 2026

Procurement

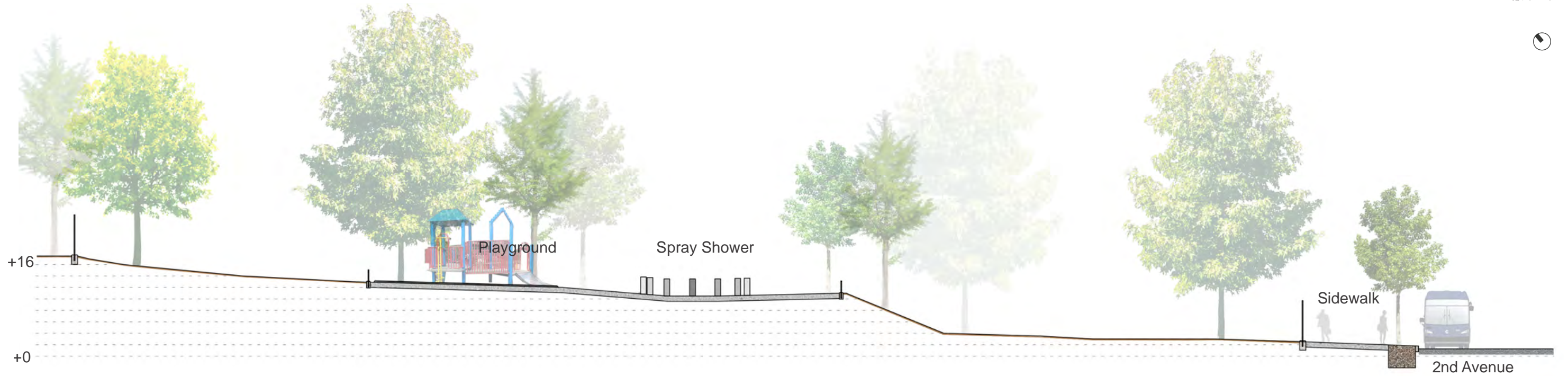
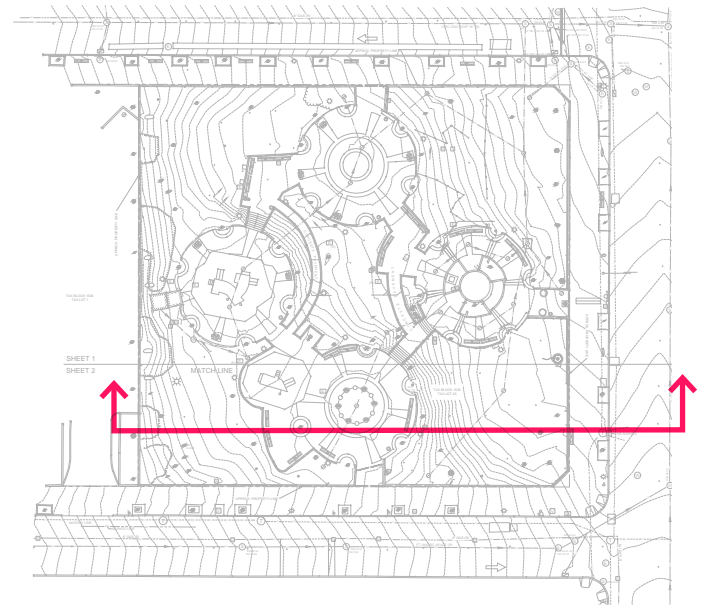
- Anticipated Start Date: Fall 2026
- Anticipated Completion: Fall 2027

Construction

- **Anticipated Start Date: Fall 2027**
- Anticipated Completion: Spring 2029



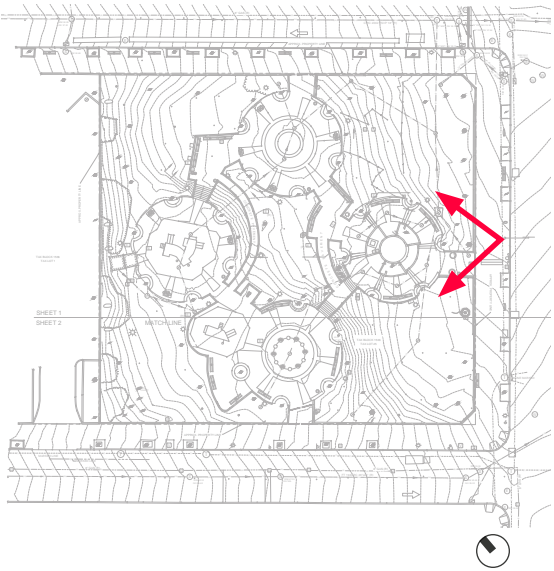
-  Play Structure with Safety Surface
-  Spray Bollards
-  Pavements - Plazas and Paths
-  Planted Spaces
-  Planter (former Fountain)
-  Informal Dog Run
-  Mechanical Building/ Utility Shed
-  Pedestrian Street on 91st Street
-  Park Entrance/Exit

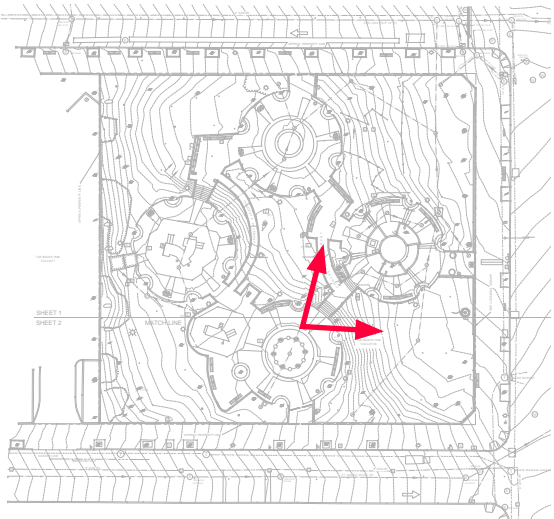


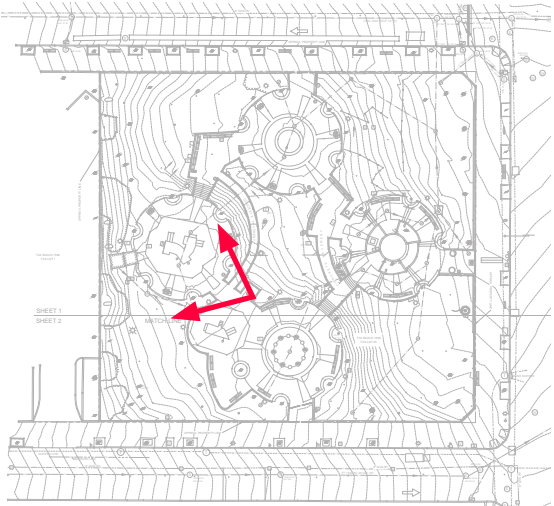
Ruppert Park | Existing Section

0 8' 16' 32'


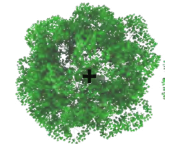
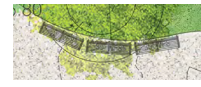










SCALE: 1/16" = 1'-0"





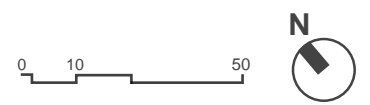




-  Park Entrance/Exit
-  Proposed Tree
-  Bench
-  Synthetic Turf
-  Permeable Concrete Hex-Block Pavement
-  Exposed Aggregate Concrete Pavement
-  Playground Safety Surface
-  Trash Receptacles
-  Type E Hi-Lo Drinking Fountain
-  Bottle Filler
-  Proposed Security Lighting
-  Public Restroom Building
-  Trash Enclosure



Ruppert Park | Schematic Plan



Ruppert Park | Schematic Plan - Playground and Water Play Enlargement









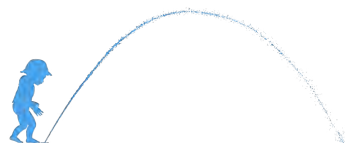
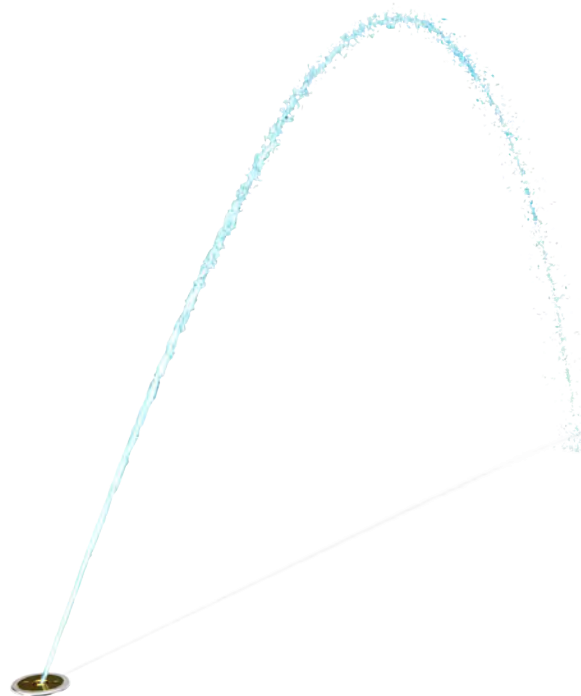




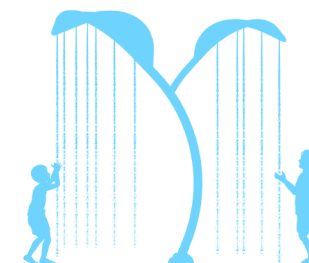


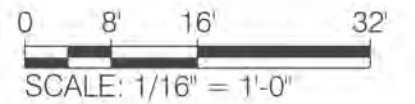
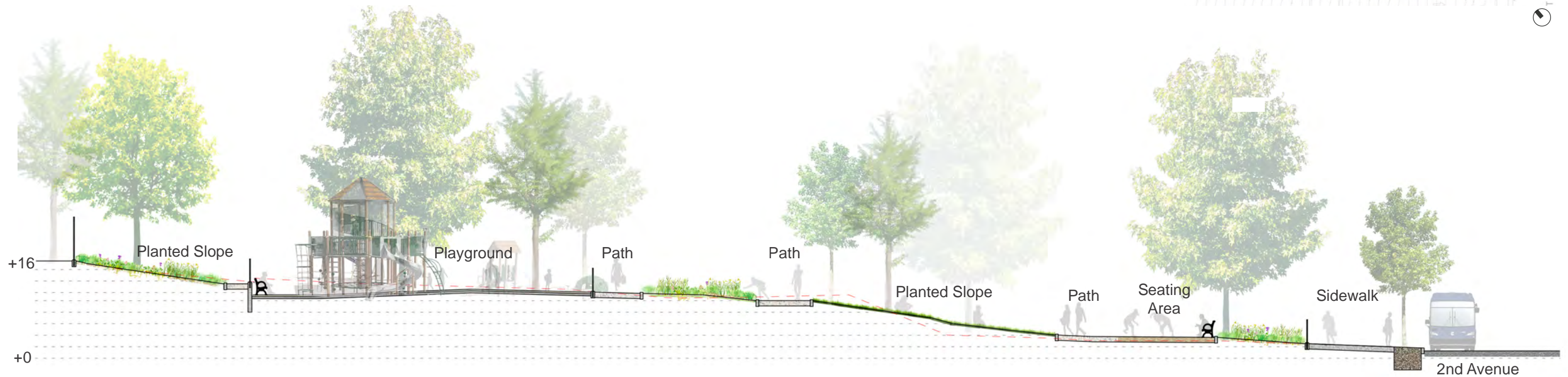
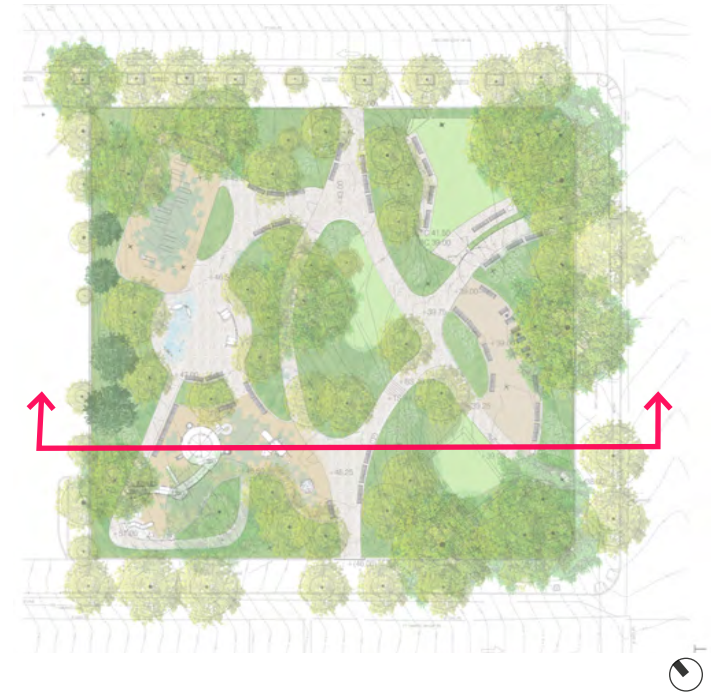


Ground Sprays



Overhead Sprays





Ruppert Park | Section



TYPE B LIGHTPOLE



1939 WORLD'S FAIR BENCH



BENCHES WITH GAMETABLE



**TYPE 'E' HI-LO
DRINKING FOUNTAIN**



BOTTLE FILLER



**SOLAR POWERED
TRASH RECEPTACLES**



TRASH ENCLOSURE



Autumn Brilliance Fern
Dryopteris erythrosora 'Brilliance'



Evergreen Wood
Dryopteris marginalis



Lilyturf
Liriope muscari



Otto Luyken Cherry Laurel
Prunus laurocerasus 'Otto Luyken'



Foamflower
Tiarella 'Crow Feather'



Shadblow Serviceberry
Amelanchier canadensis



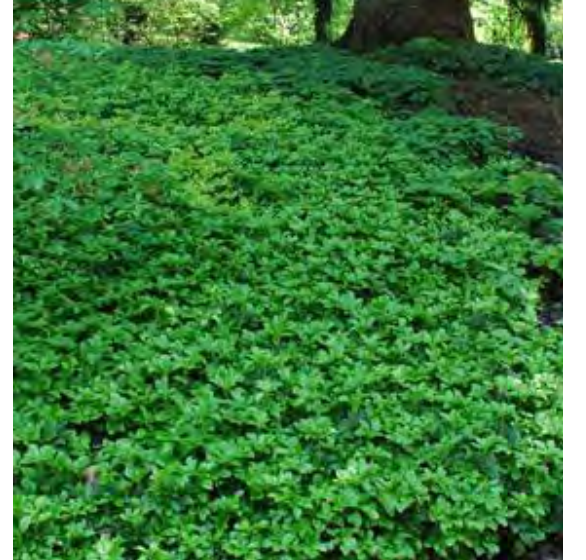
Little Henry Sweetspire
Itea virginica 'Little Henry'



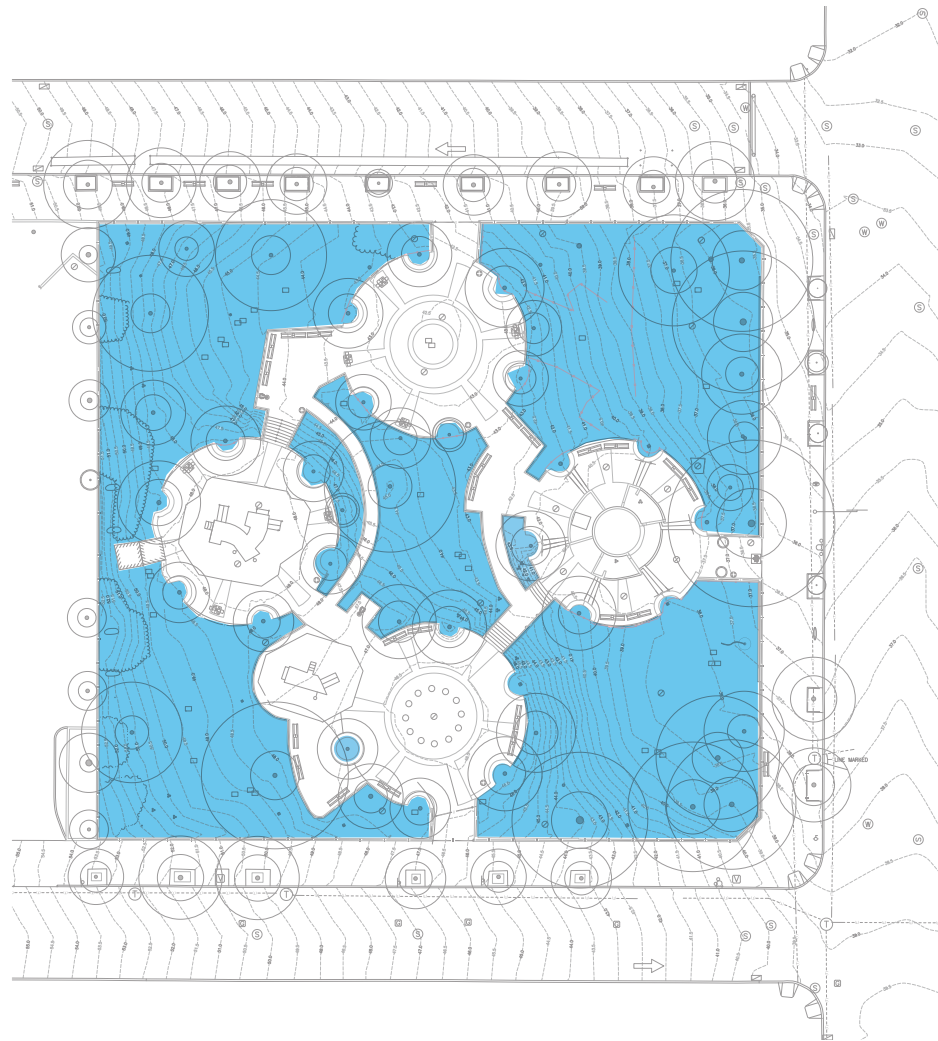
Sweet Pepperbush
Clethra alnifolia



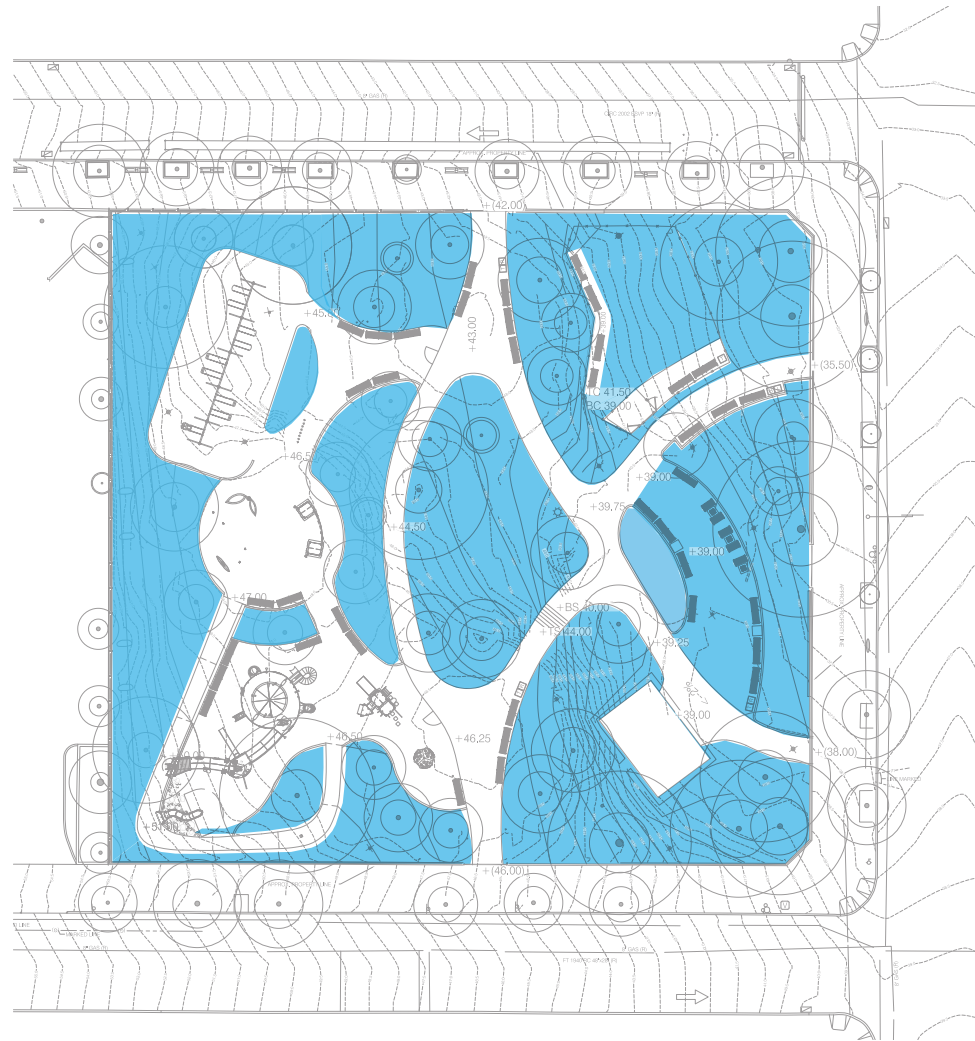
Oakleaf Hydrangea
Hydrangea quercifolia 'Snow Queen'



Green Sheen Pachysandra
Pachysandra terminalis 'Green Sheen'



Existing Permeability: **60%**



Proposed Permeability: **61%**

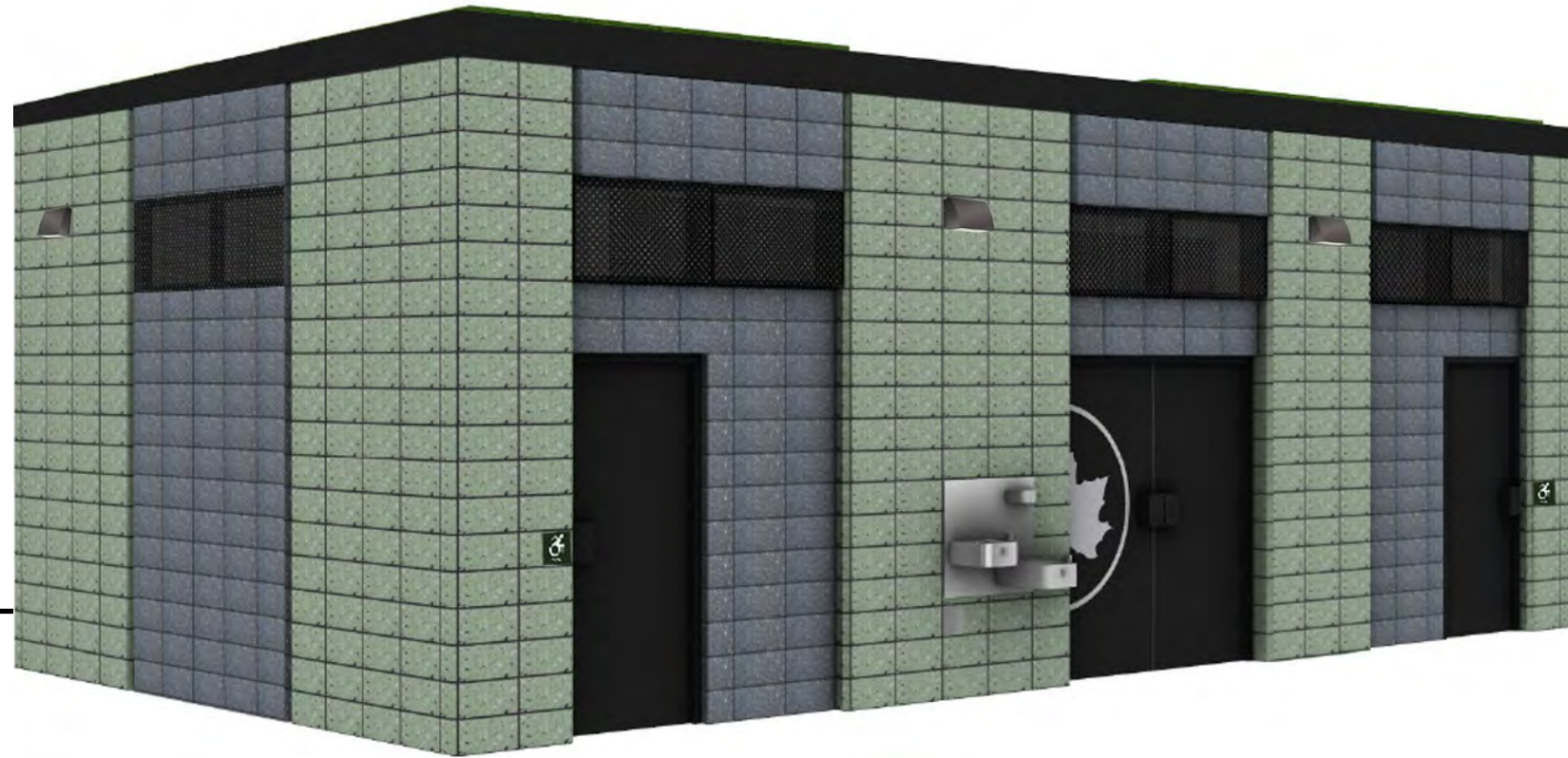
 Permeable

SUSTAINABLE PRACTICES

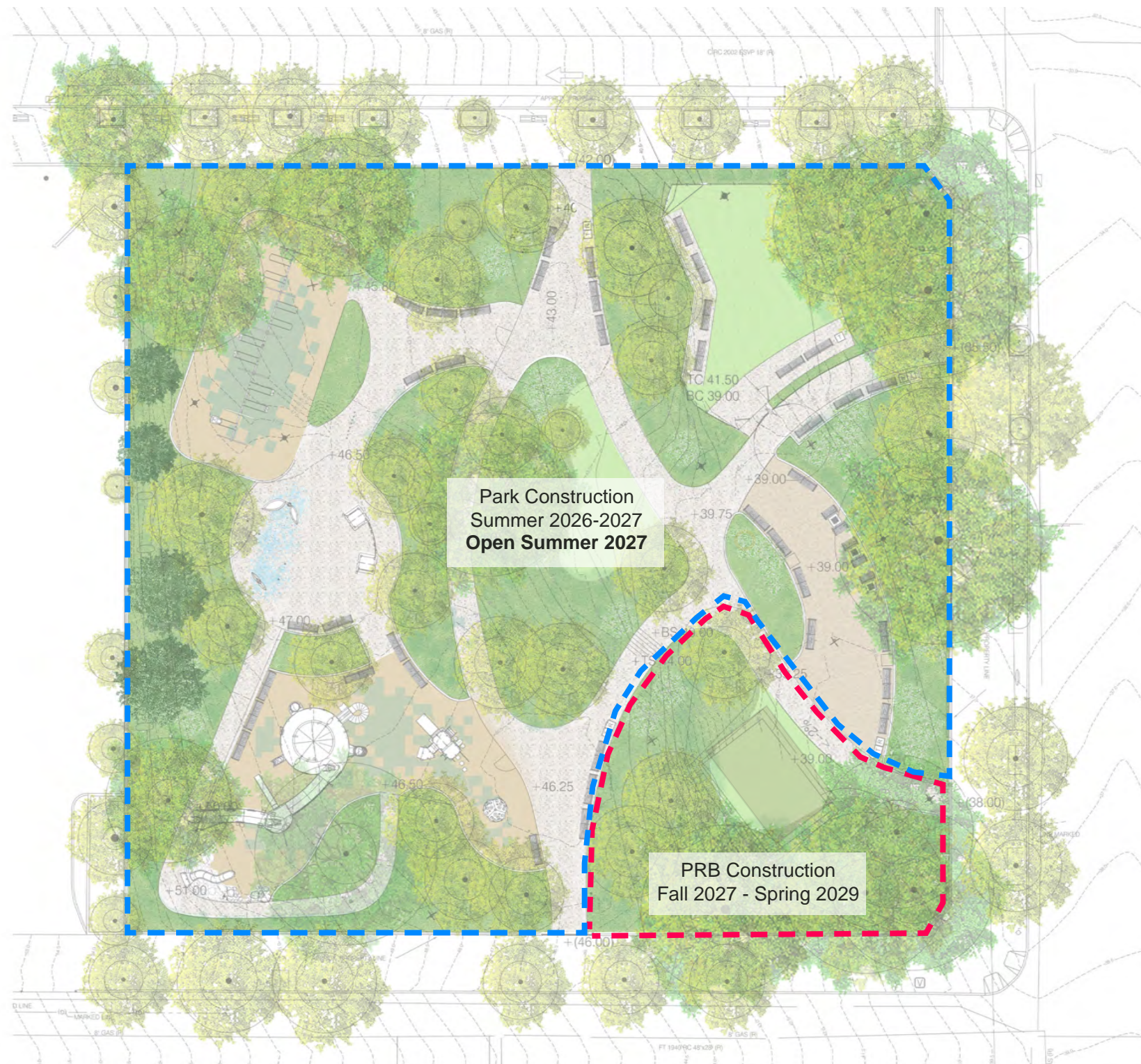
- Maximize permeable surfaces
- Reduce storm water runoff
- Use recycled content material
- Use regional materials
- Supply outdoor spaces for social interaction
- Provide healthy growing conditions
- Provide views of vegetation for mental restoration
- Utilize site appropriate resilient plant material
- Use non-invasive, native plant material

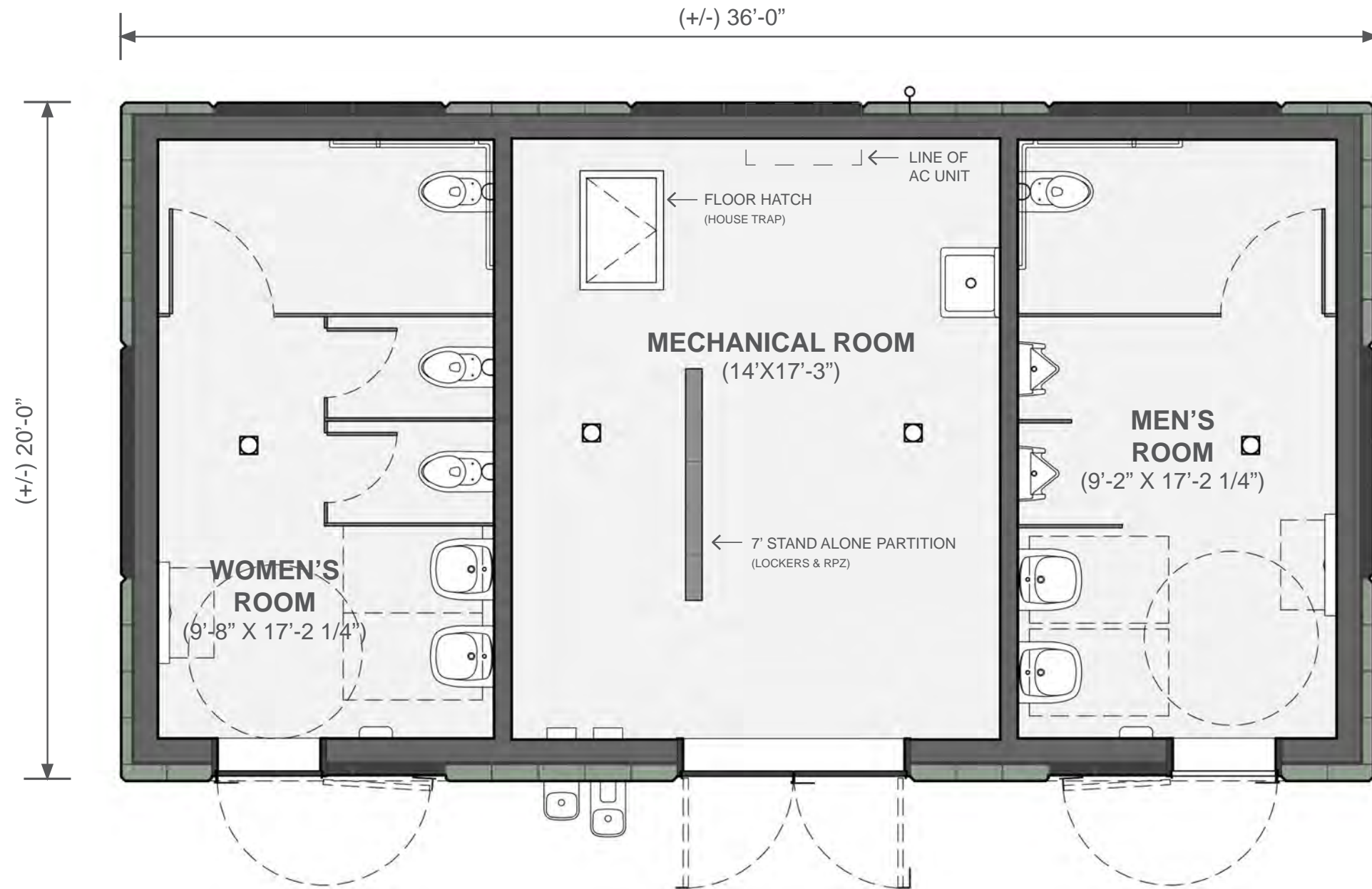


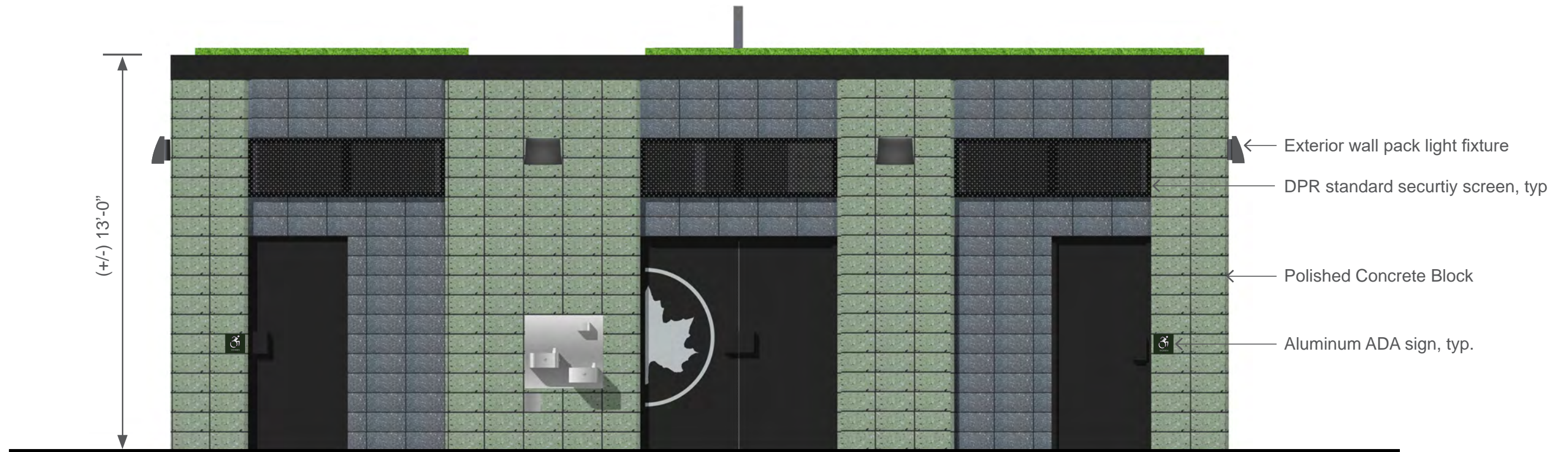
NYC Parks



Ruppert Park | Public Restroom Building Typical 3D Rendering

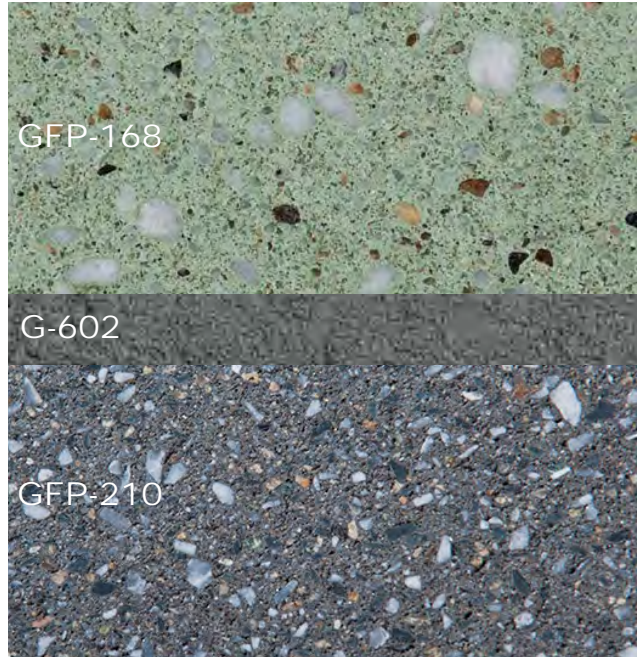






1 - Front Elevation (East)

EXTERIOR WALLS



GROUND FACE POLISHED
CONCRETE BLOCK MASONRY

-WESTBROOK CONCRETE BLOCK GFP - 168

-WESTBROOK CONCRETE BLOCK GFP - 210
(CONNECTICUT)

MORTAR JOINTS

-GLEN-GERY MORTAR COLOR G-602



GREEN ROOF
- XEROFLOR XF300



HOLLOW METAL DOORS AND FRAMES,
WINDOWS, LINTELS, AND SHEET
METAL FLASHING, ROOF FASCIA
-COLOR BLACK



SECURITY SCREENS
-KANE SECURITY SCREENS
COLOR BLACK,
PERFORATED SCREENS, 16GA MILL GALV.
63% OPEN AREA



ALUMINUM ADA SIGN
-PARKS GREEN BACKGROUND,
NATURAL METAL PICTOGRAM AND LETTERS



EXTERIOR WALL PACK
LIGHTING FIXTURE
-RAB LIGHTING
MODEL SLIM57



ARCHITECTURE GRILLE
-ALUMINUM COLOR BLACK



DRINKING FOUNTAIN WITH
BOTTLE FILLER
-HAWS MODEL 1119FR WITH 1920FR

Thank You!
Questions?

