



HSNY
HOUSING SOLUTIONS
OF NEW YORK

Manhattan Welcome Center CB8 Presentation



Our Mission

End homelessness.

Our Vision

Provide comprehensive services towards permanent housing.

Who We Are

Since 2001, HSNY has embraced a mission to end homelessness. We are dedicated to applying a solution-focused approach to housing that provides all of our clients, from our families to Persons Living with HIV, the best pathway to permanent housing. HSNY is ever expanding to support all people through our supportive housing programs, Community Health Program, and youth programs.

What We Do

HSNY currently offers emergency/transitional housing and support services at over 30 facilities across all five boroughs. Last year our organization:

- Served over 4000 individuals and families with emergency housing and support each month.
- Helped find permanent housing for over 600 families and individuals.
- Provided over 75 tons of food to Persons with HIV



2001
Founded



4,000+
Clients Served
on average



30+
Shelter Sites &
Expanding



400+
Dedicated Staff

Our Services



Transitional Housing



Social Support Services



Emergency Housing for
PLWH



Connections to Care:
Building Resilience in Youth



Domestic Violence
Empowerment Initiative



Youth Works Plus Program



Pathway to Permanent
Housing



Food and Nutrition Pantry



Health Home Supportive
Housing



Who We Serve

Committed To Helping

HSNY offers comprehensive and compassionate services to marginalized populations in New York City focusing on housing security, food security, wellness, and social support.



Families With Children

Majority of HSNY's clients are families with young children. We provide them with the life skills and support they need to find and thrive in permanent housing.



Single Adults

HSNY provides a safe haven for all adult clients regardless of age, gender, immigration status, and all other protected classes. We work with clients to help them find the resources to move into permanent housing.



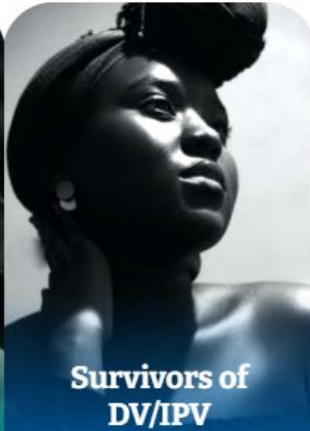
PLWHA

HSNY provides care and support to People Living With HIV and Aids (PLWHA). HSNY helps PLWHA individuals lead thriving and fulfilling lives.



Youth

HSNY provides mental health services and life skills training catered specifically to young people especially those who are at high risk for involvement with the criminal justice system.



Survivors of DV/IPV

HSNY supports and provides protection for clients who survived Domestic Violence and/or Intimate Partner Violence situations.

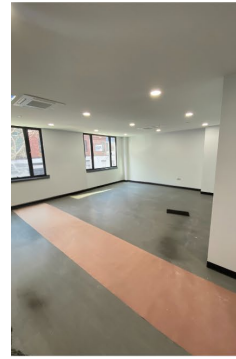
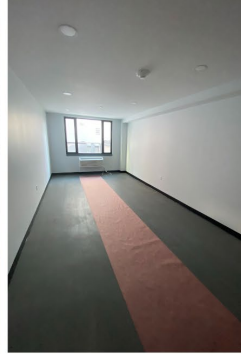


Foreign Migrants

HSNY responds to international crises by receiving and providing support to foreign migrants entering New York City that are looking for a better a life.

Manhattan Welcome Center

- Welcome Centers provide immediate shelter to the unsheltered. They are designed to bring people off the streets quickly into a stable and supportive setting.
- HSNY staff will provide onsite case management to individuals to assess the best services available to help them get back on their feet and transition to the most appropriate placement (safe haven, stabilization bed, or traditional shelter).
- Clients are expected to be at the site about 30 days before they transition to their next placement.
- HSNY staff will emphasize the 'Good Neighbor Policy' to all clients to ensure positive community relationships.
- The Manhattan Welcome Center is slated to open September 2025.



HSNY Manhattan Welcome Center

Building Logistics

- 88 beds/ ~30 bathrooms/7 flrs
- Community Room, Cafeteria, Outdoor area (helps prevent loitering in front of building)
- Floors will be separated by gender. Rooms will be separated by couples and for people who identify as trans and nonbinary
- Animals are not allowed in the facility unless they are a certified service animal
- Food will be served daily by staff

HSNY staff (23 staff members)

- Site Director
- Social Workers
- Case Managers
- Maintenance team
- Housing Specialist

Security

- 24/7 Contracted Uniformed Security
- The site's posting orders for all assigned security officers involve a patrol of the building perimeter as well as monitoring the facility
- There are 83 cameras throughout the facility to ensure safety for clients and staff

Community Engagement

- HSNY is conducting outreach to neighborhood schools (MS 114, PS 527, the Gillian Brewer School, NYC Elite Gym,)
- We've also engaged the nearby hotel, Haynes Houses, ASCPA, and Asphalt Green
- HSNY hopes to establish lasting partnerships that enriches the lives of our clients and the surrounding community
- We are planning to host a Hiring Fair for the facility end of July 2025



HSNY in the Community!!



Father's Day Celebration



Client Toy Drive



Shop For Free Event



Client Appreciation Day



HSNY FNS Cooking Class



Back to School Event



HSNY Backpack Drive



Resource Tabling

Concerns? 24/7 Contact Info

- HSNY Chief Program Officer:
 - Dr. Xellex Rivera, cpo@hsfnny.org
- HSNY inbox: info@hsfnny.org

