

# 1 E 60th Street

## Distinctive Sidewalk Project



*Date:*

06/10/2025

*Prepared For:*

Community Board 8 Transportation Committee



# Contents

**1.0 | Introduction**

**2.0 | Project Documentation - Plans, Renderings, Materials**

**3.0 | Construction Documents**

# 1.0 | Introduction

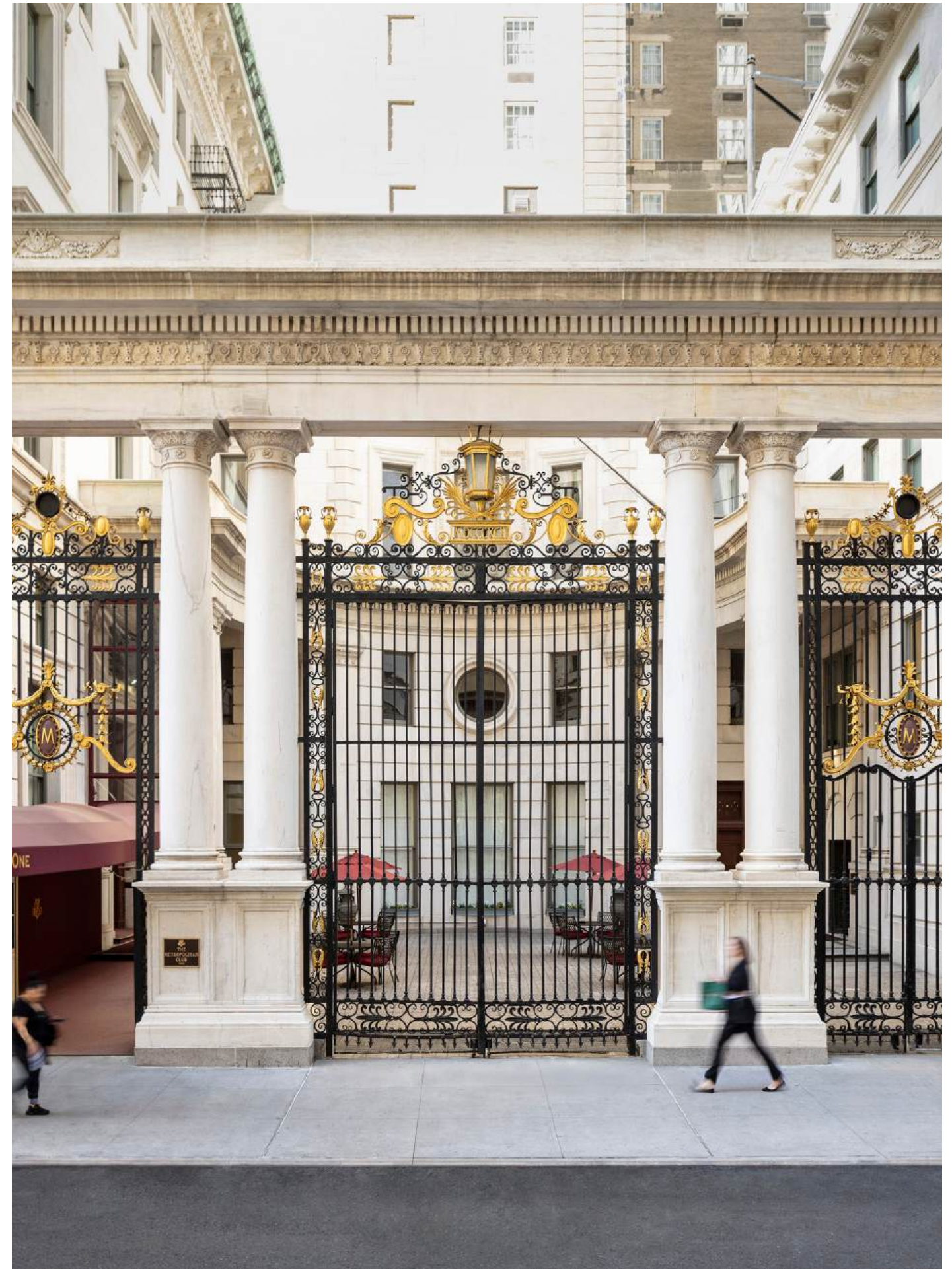


# Project Description

This Distinctive Sidewalks project proposes to restore a granite driveway that was originally part of the historic fabric of the sidewalk outside of 1 E 60th Street, but had been removed in tandem with the subway and sidewalk vault construction, circa 1918.

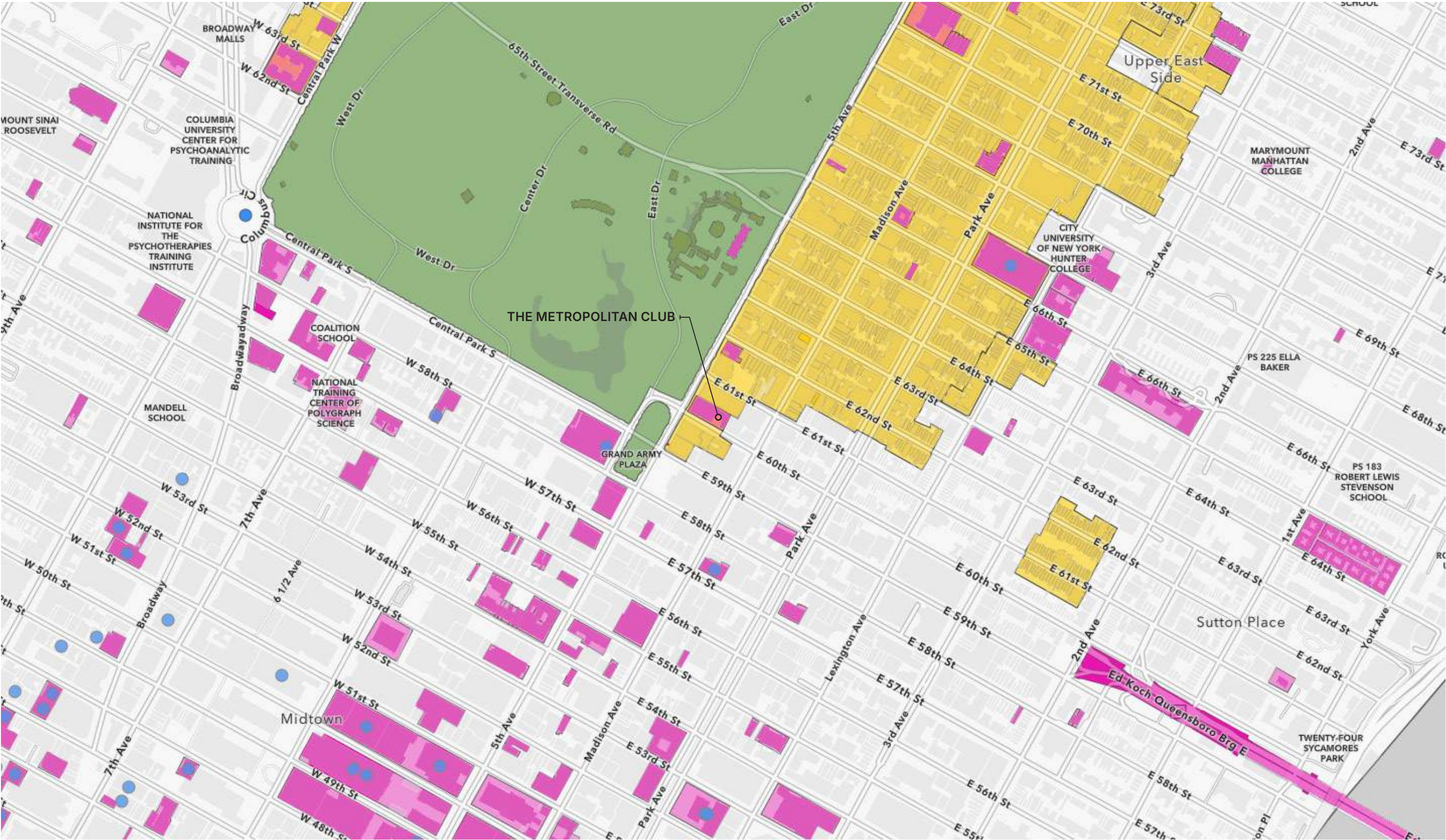
The granite driveway connected to the original granite courtyard of the Metropolitan Club, a New York City Landmark. The Metropolitan Club is currently restoring its granite courtyard. The driveway is not part of the Landmark and forms part of the sidewalk (City property). However, it forms part of the composition and was integral to the Stanford White-designed Metropolitan Club at its period of historical significance.

As the Metropolitan Club restores its granite courtyard, this project proposes to restore the historic granite driveway as well.



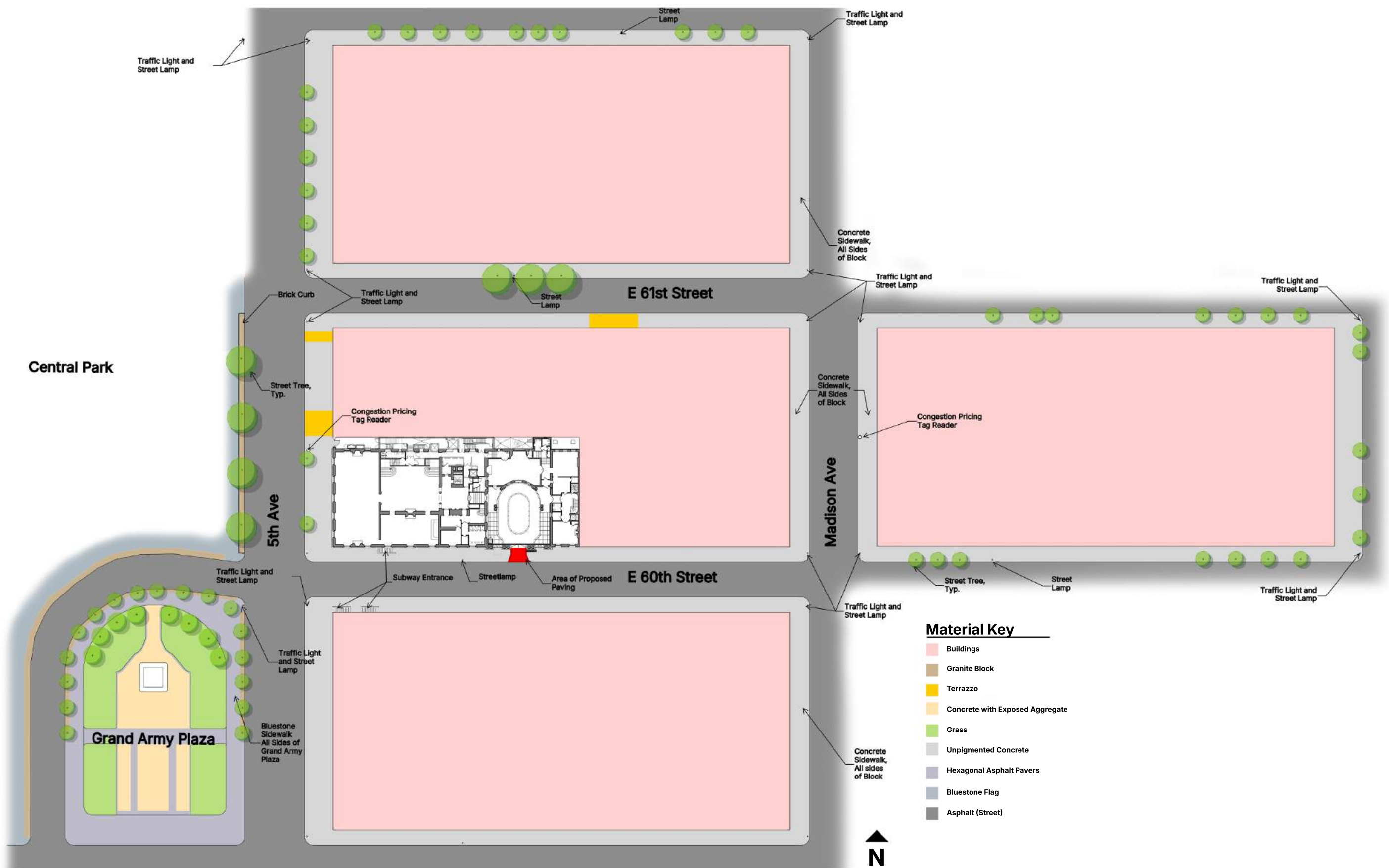


# Location Map



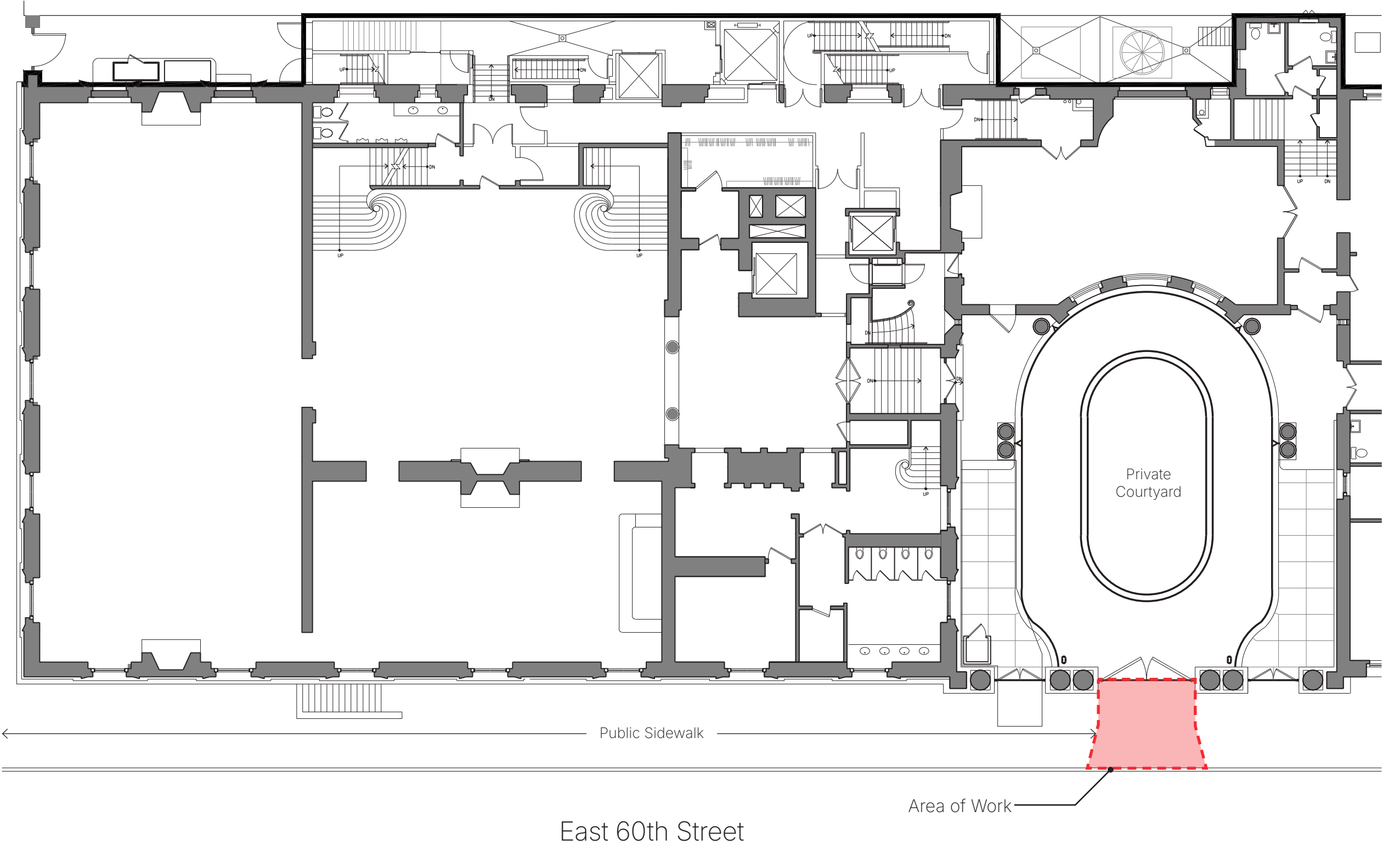


# Block and Street Feature Plan



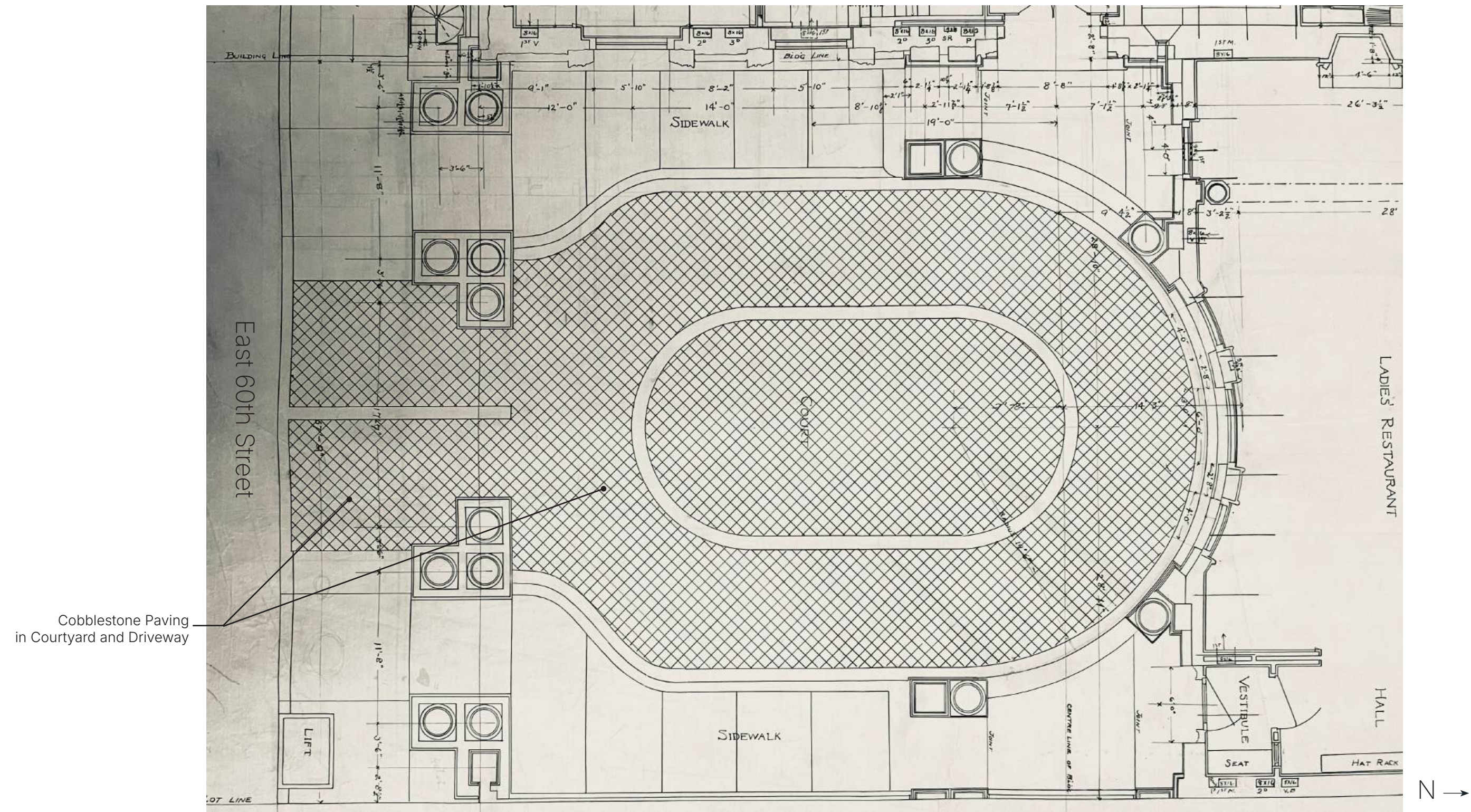


# Area of Work Plan





# Historic Driveway Paving Plan



Historic Courtyard Plan (Pre-1920)

McKim, Mead, and White Architects

New York Historical Society



# Historic Photographs



Cobblestone Paving  
in Courtyard and Driveway

Historic Courtyard and Driveway - October 14, 1914  
Museum of the City of New York



# Historic Photographs



Cobblestone Paving  
in Courtyard and Driveway

Historic Courtyard and Driveway - 1894  
Columbia University



# Historic Photographs



Cobblestone Paving  
in Courtyard and Driveway

Historic Courtyard and Driveway - 1914  
New York Historical Society



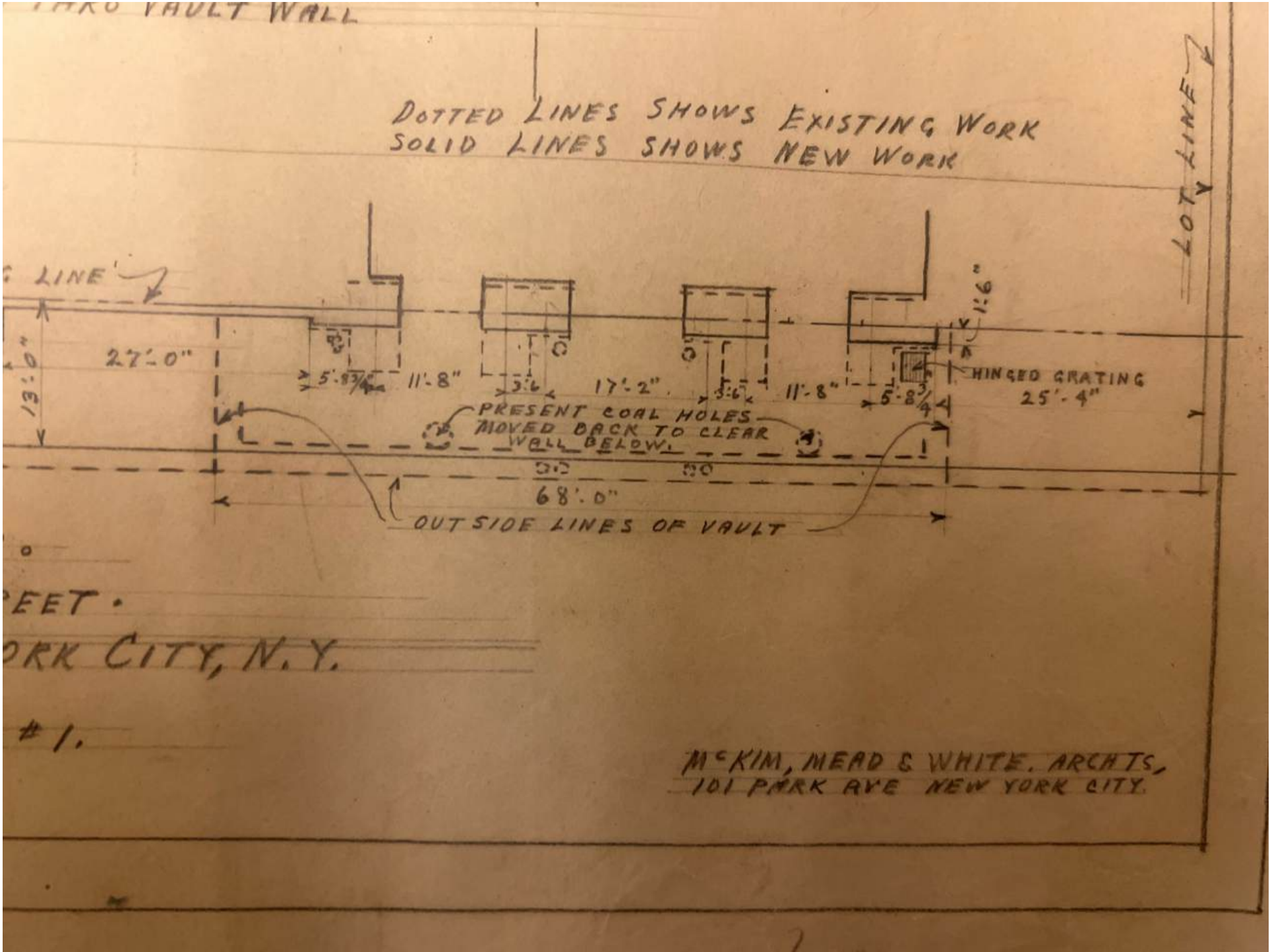
# Historic Photographs



Subway Construction - c. 1918  
New York Historical Society

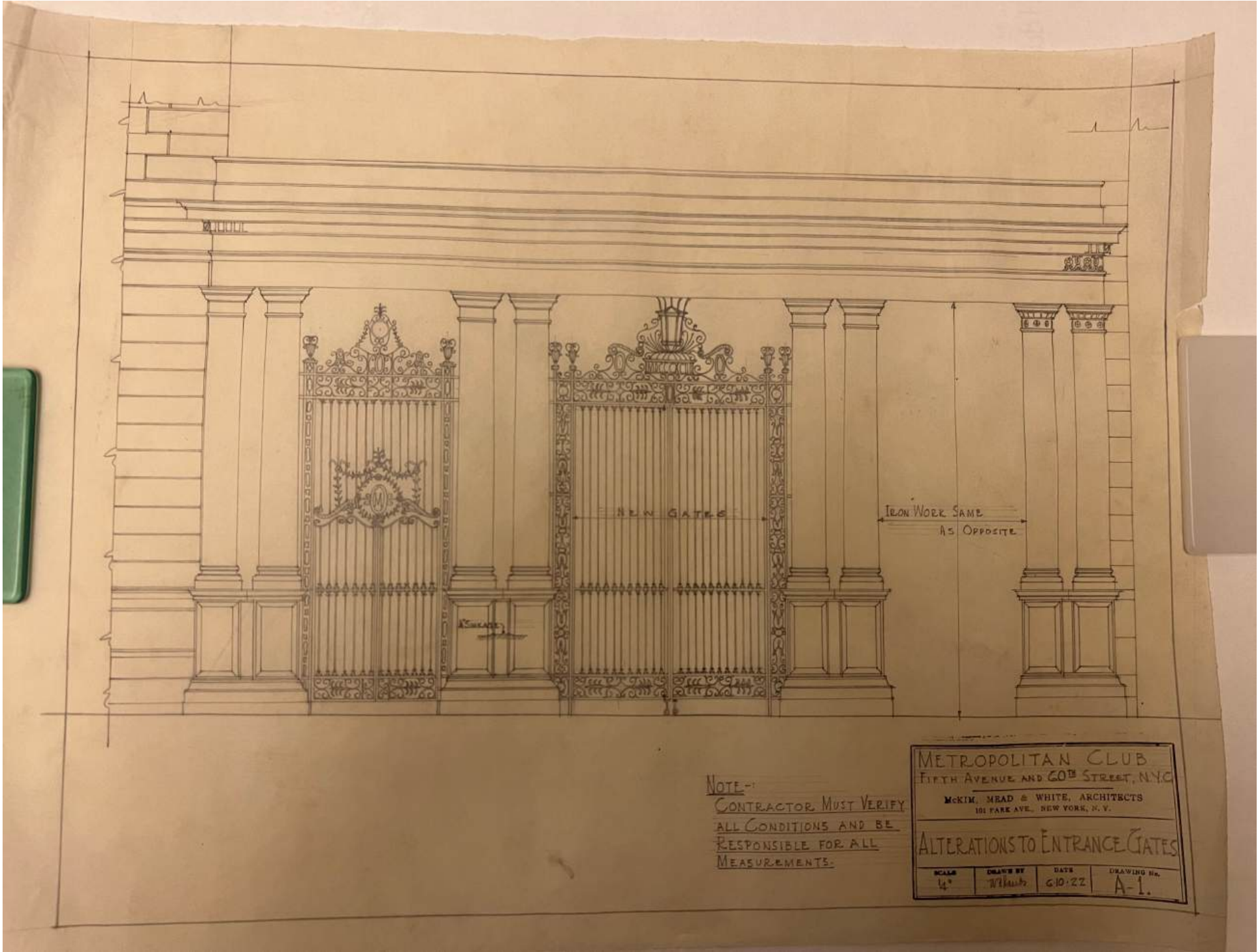


# Historic Drawings



McKim, Mead, and White Driveway Modification for Subway Construction - c. 1922  
New York Historical Society

# Historic Drawings



McKim, Mead, and White Driveway Entry Modification for Subway Construction - c. 1922  
New York Historical Society



# Area of Work Photographs - Existing Conditions



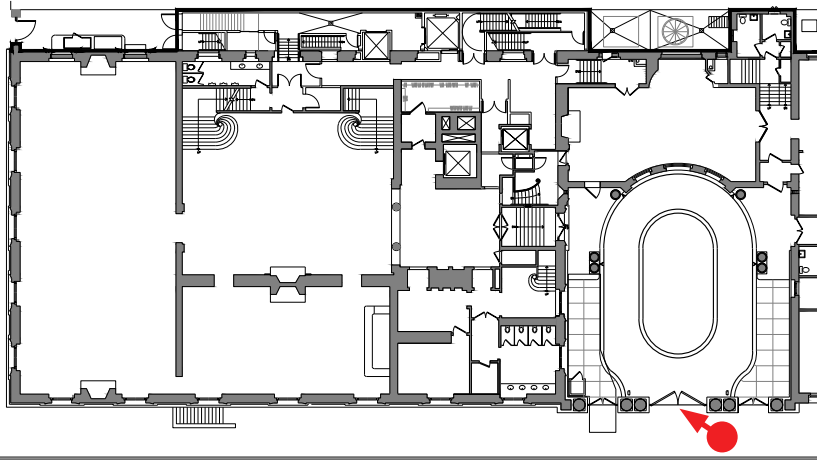
September 19, 2024



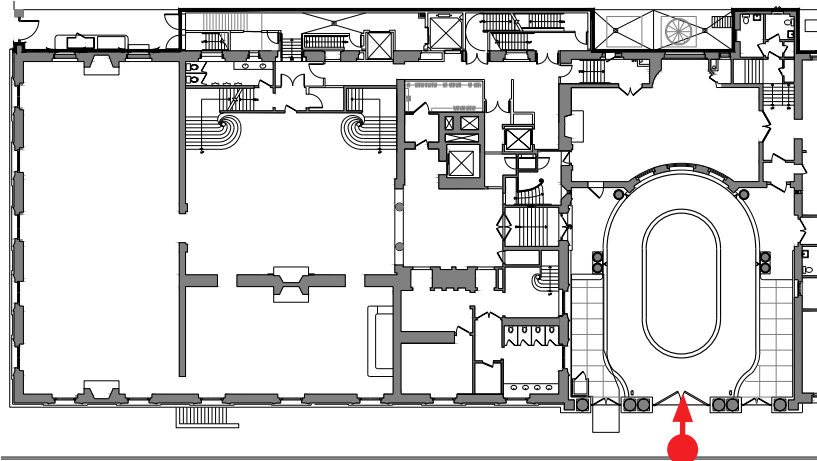
September 19, 2024



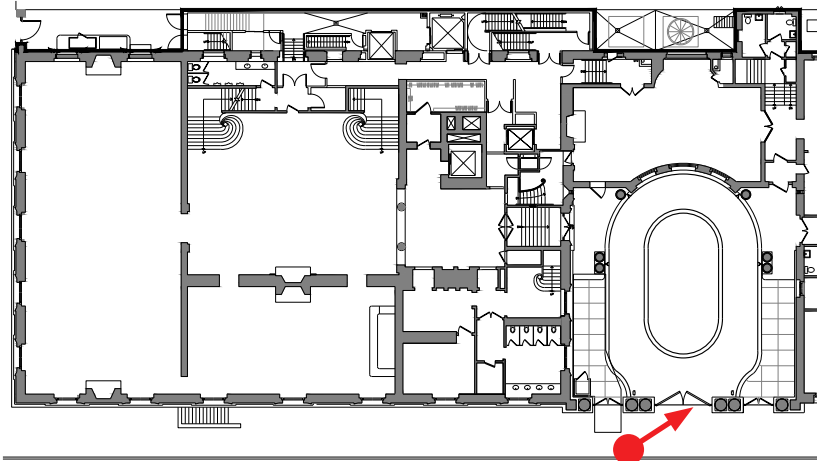
September 19, 2024



Key Plan



Key Plan



Key Plan



## **2.0 | Project Documentation Plans, Renderings, Materials**

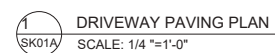


[illegible]

ARCHITECT:  
**ACHESON DOYLE PARTNERS**  
**ARCHITECTS, P.C.**  
226 West 26th Street, 5th Floor, New York, NY 10001  
212.414.4500  
info@adparchitects.com

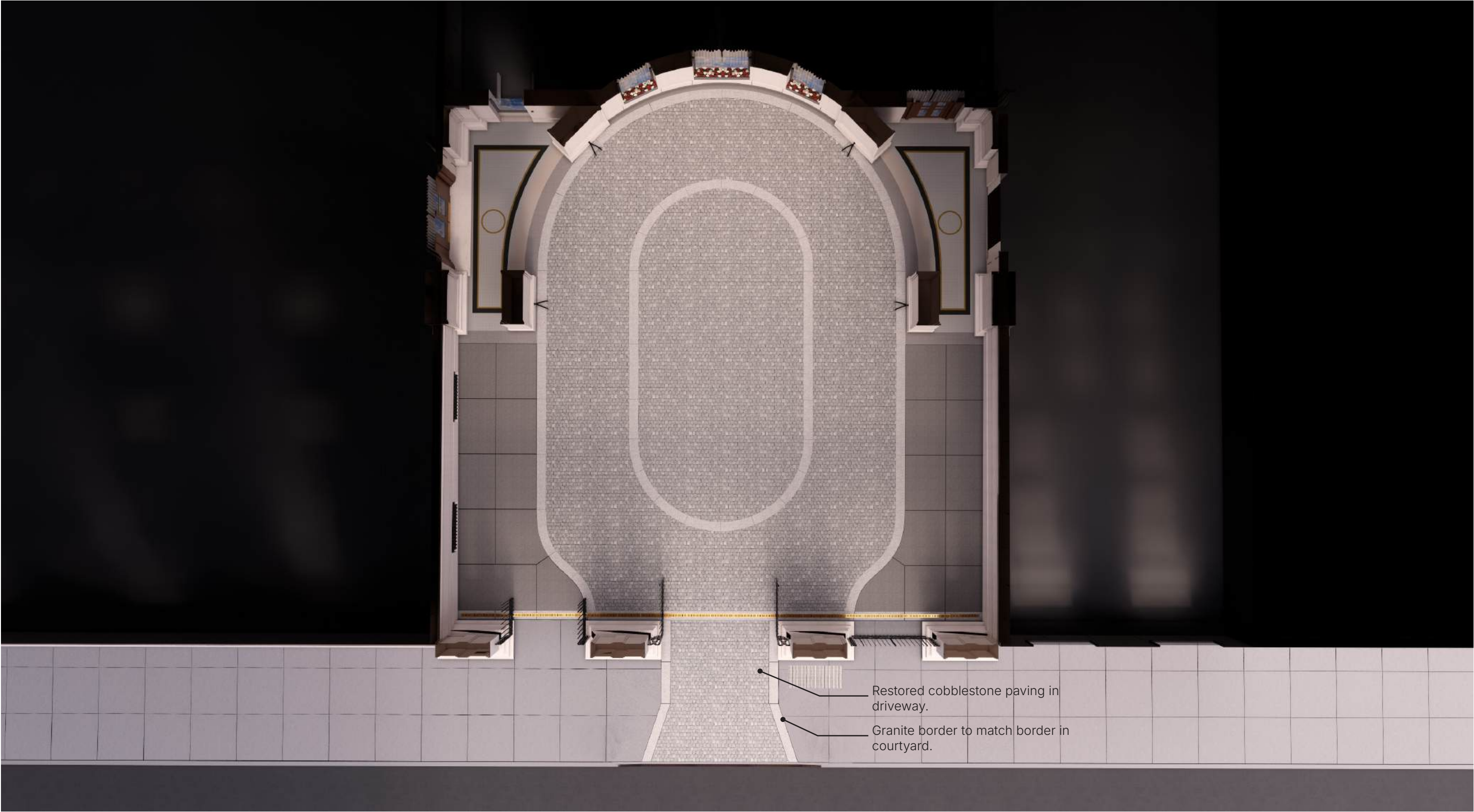
DOB#:

DRAWING: OF





# Rendered Plan





# Rendered View - Driveway and Courtyard Entrance





# Rendered View - Towards Courtyard






# Rendered View - Oblique View of Driveway from E 60th Street





# Proposed Materials

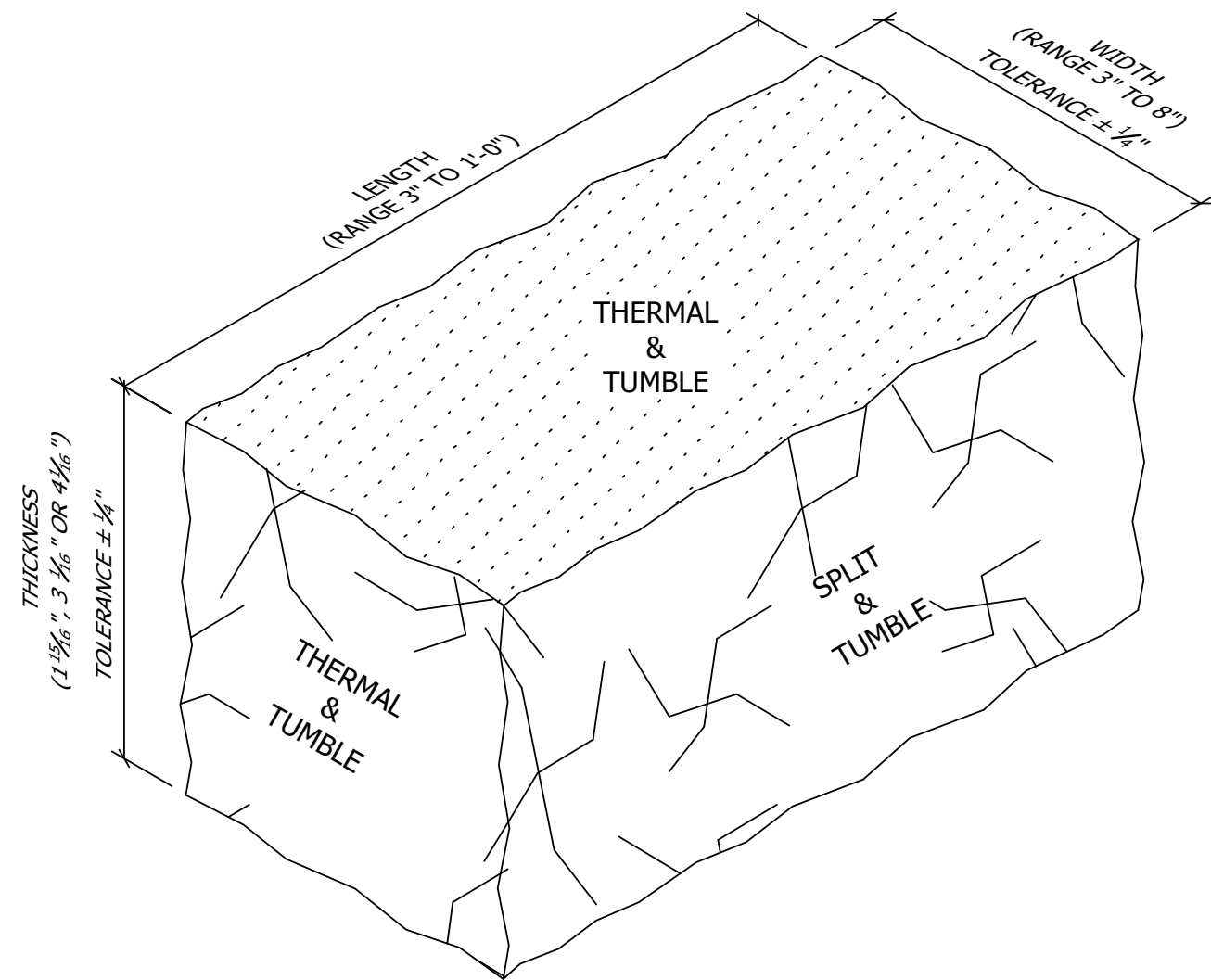
GRANITE BLOCK - Tumblestone by Coldspring

- 4"x4" blocks
- Replicates the look of worn granite blocks through a manufacturing process that "tumbles" the blocks together
- ADA ACCESSIBLE 
  - Less than 1/4" transitions
- Thermally treated to provide slip resistance
- Precedent Use: Central Park Perimeter





# Proposed Materials



FINISH:  
TOP - THERMAL & TUMBLE  
SIDES - SPLIT & TUMBLE  
BOTTOM - SAWN & TUMBLE (NOT SHOWN)

RECOMMENDED JOINT WIDTH: 3/4"

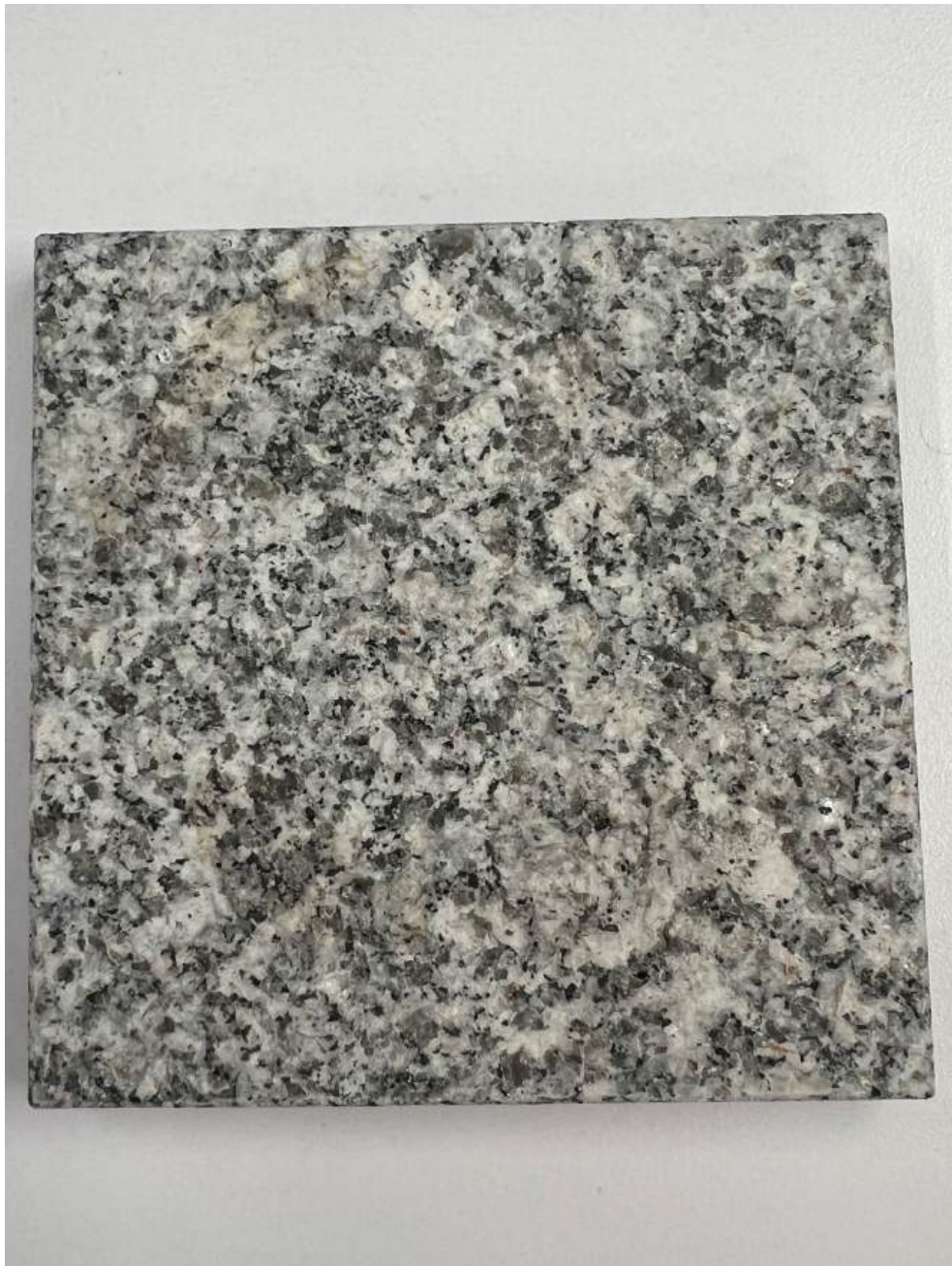
Tumblestone by Coldspring - Detail



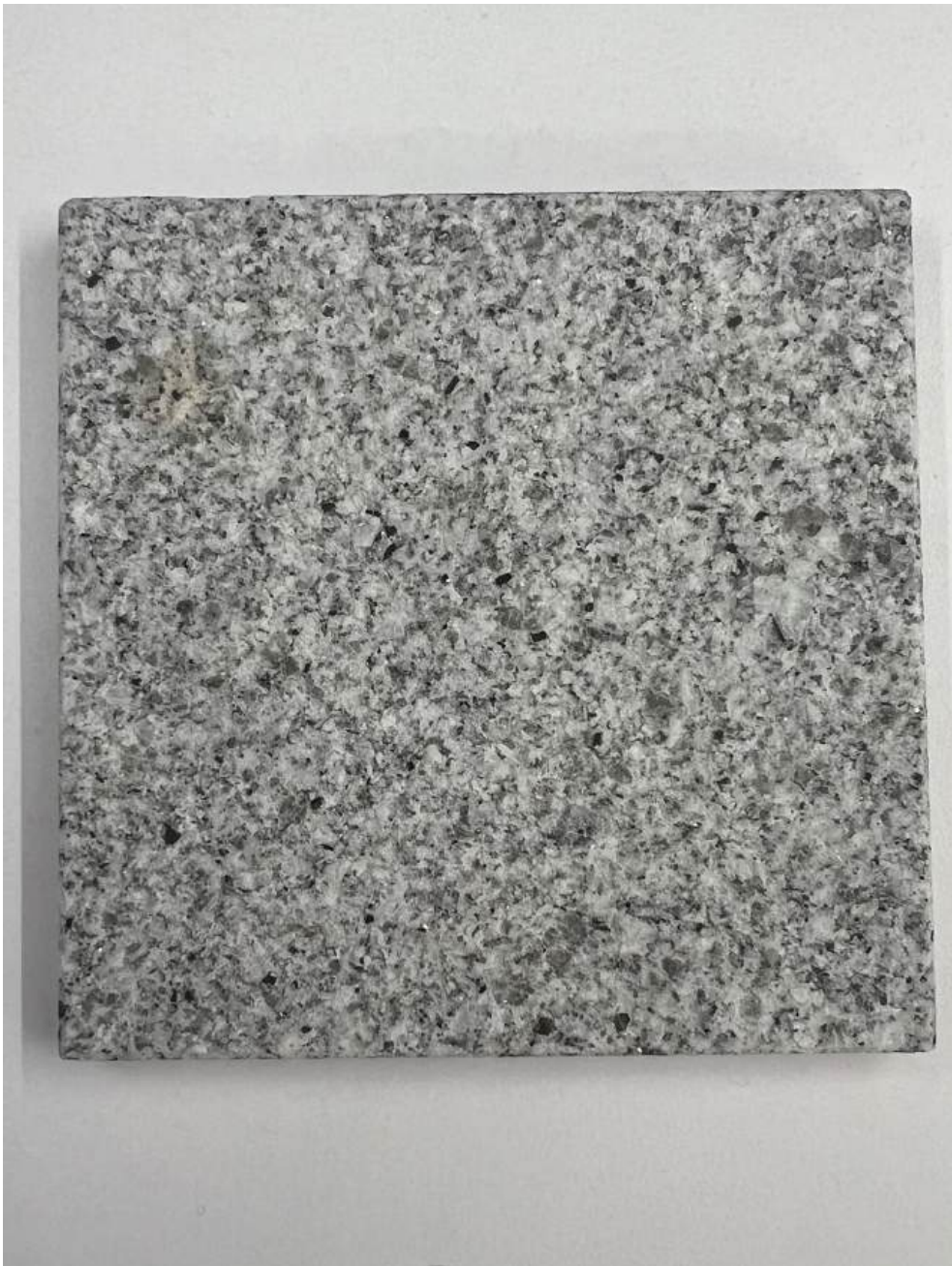
Tumblestone by Coldspring  
Sample of Actual Proposed Cobblestone - Iridian Finish



# Additional Material Samples



Tumblestone by Coldspring  
Sample of Actual Proposed Cobblestone - "Iridian" Finish  
(Identified as ST-1 in Construction Documents)

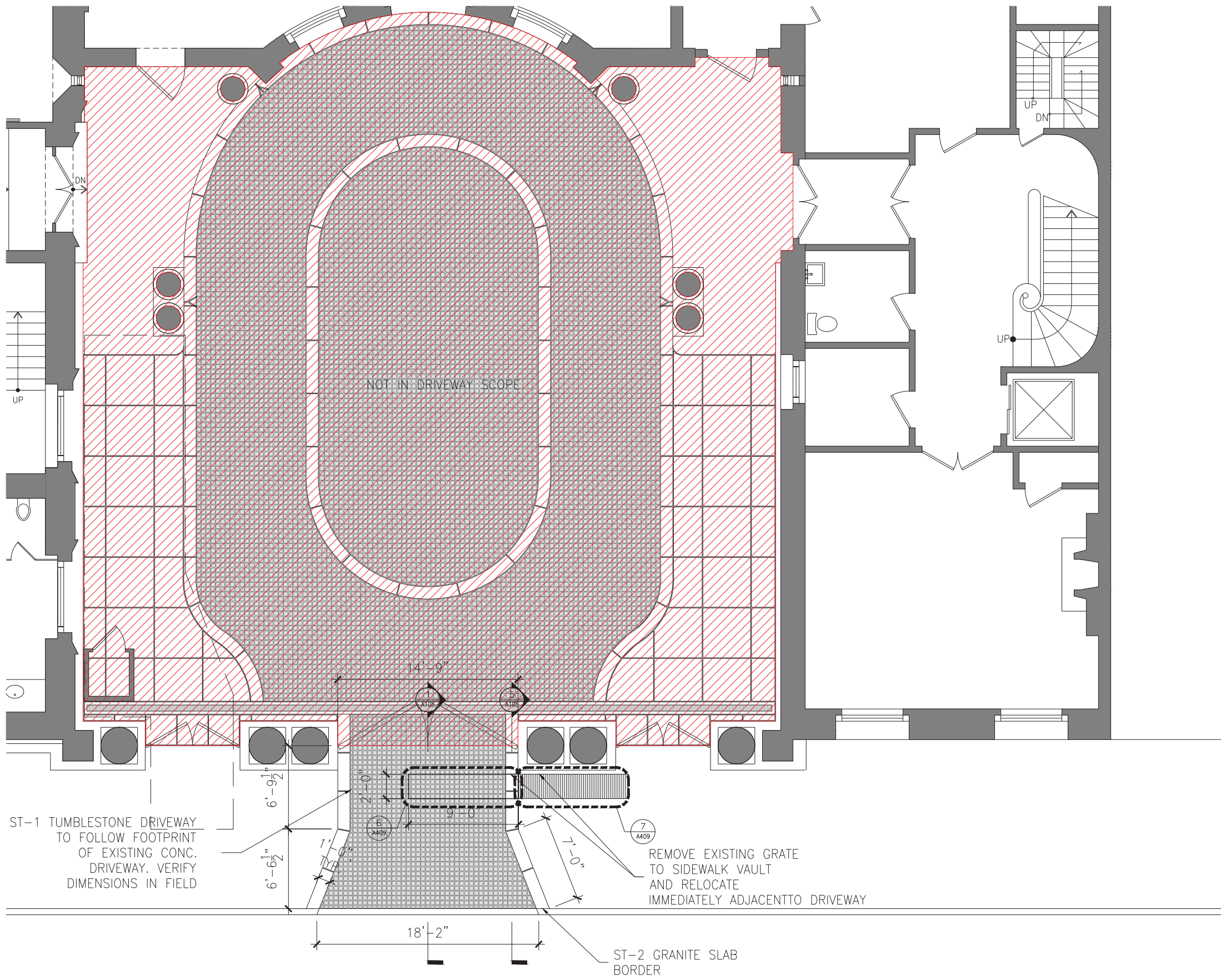


Tumblestone by Coldspring  
Sample of Actual Proposed Granite Border - "Sierra White" Finish  
(Identified as ST-2 in Construction Documents)



## **3.0 | Construction Documents**





1 DRIVEWAY PAVING PLAN  
A105 SCALE: 1/4" = 1'-0"

NO.	ISSUE/DESCRIPTION	DATE
01	DRAFT FOR REVIEW & PRICING	12-06-2024
02	PRICING SET REVISIONS	01-31-2025

PROJECT DESCRIPTION

METROPOLITAN CLUB DRIVEWAY RESTORATION

1 E 60TH STREET  
NEW YORK, NY 10022

ARCHITECT:  
ACHESON DOYLE PARTNERS  
ARCHITECTS, P.C.  
226 West 26th Street, 5th Floor, New York, NY 10001  
212.414.4500  
info@adparchitects.com

DRAWING TITLE:

DRIVEWAY PAVING PLAN

ARCHITECT'S PROJECT NUMBER:		72407.00	
SCALE:	AS NOTED	DATE:	03-26-2025
DRAWN BY:	WJC	CHECKED BY:	MFD
SEAL:	DRAWING NUMBER:		

A105.00

DOB: M01186294-11  
DRAWING: OF 27







PROJECT:

PROJECT DESCRIPTION

1 E 60TH STREET  
NEW YORK, NY 10001

DRAWING TITLE:

ARCHITECT'S PROJECT NUMBER:		072407.02
SCALE:	AS NOTED	DATE: 05-02-2025
DRAWN BY:	WJC	CHECKED BY: MFD
SEAL:	DRAWING NUMBER:	

1 MATERIAL SCHEDULE  
A900 SCALE: NTS



# Thank you.



Contact:

William Collins, AIA  
*wcollins@adparchitects.com*  
917.698.6518