

UPPER EAST SIDE HISTORIC DISTRICT MAP

SCALE: NOT TO SCALE

DESIGNATED MAY 19, 1981

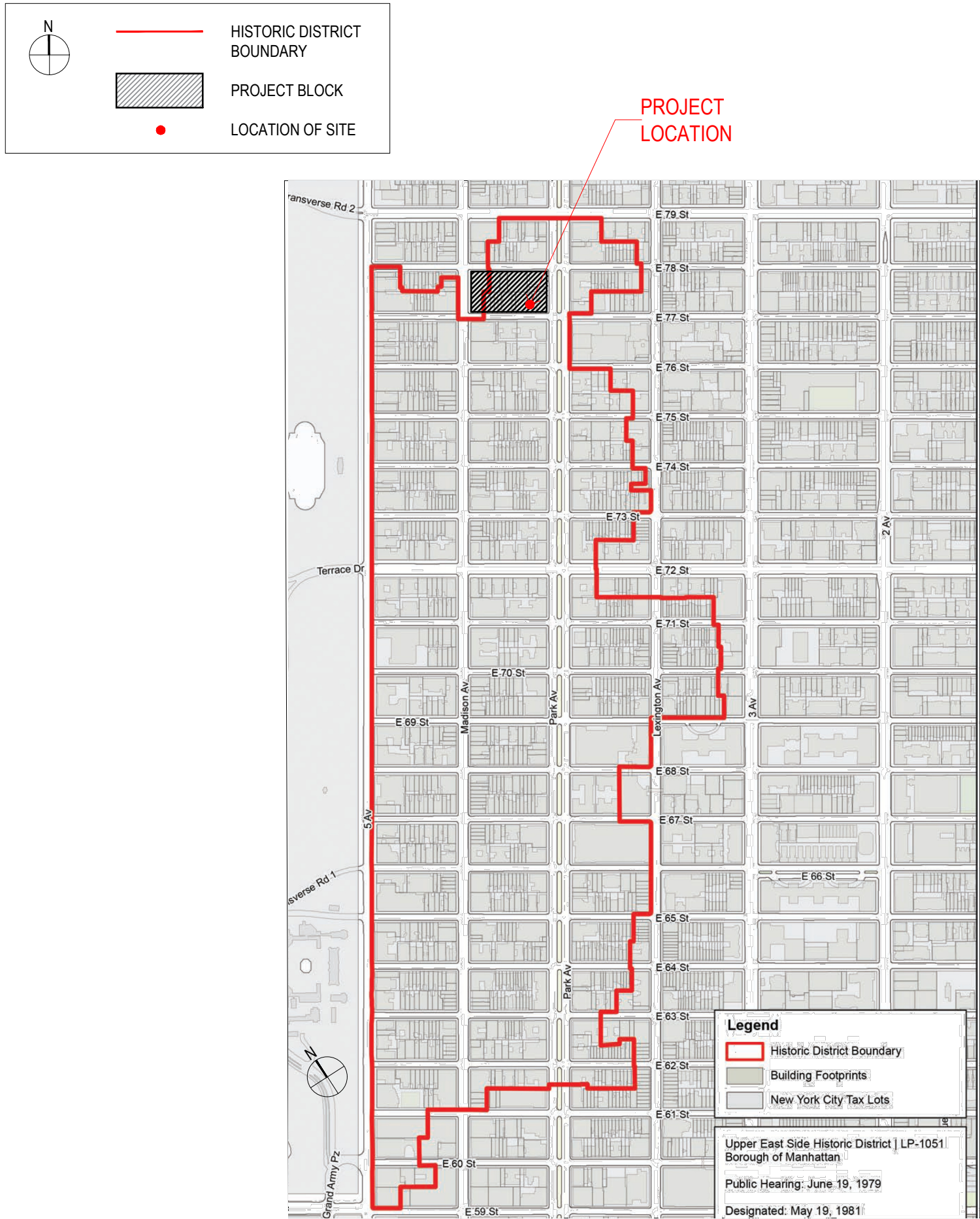
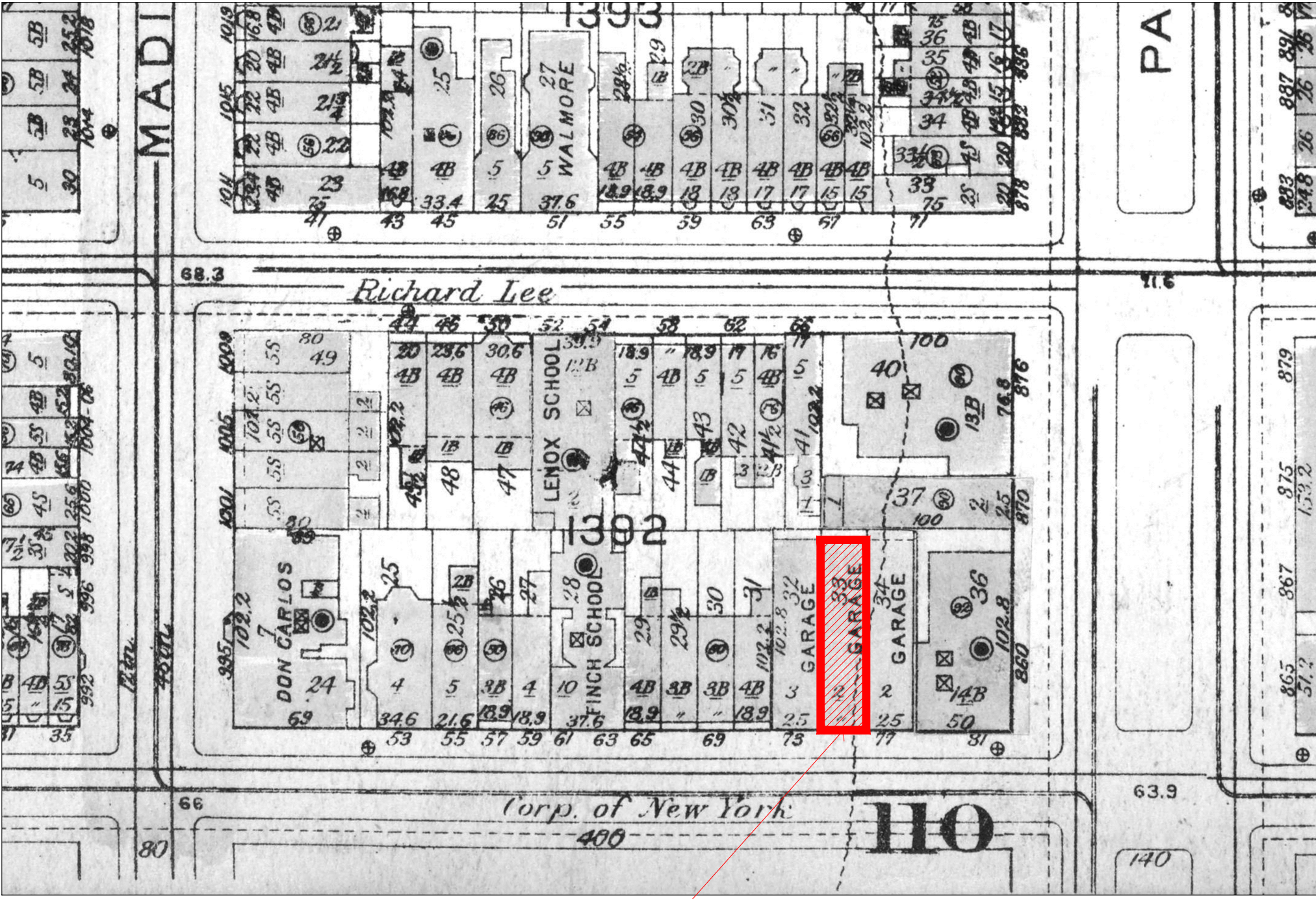


PLATE 28, G.W. BROMLEY AND CO. MAP

SCALE: 1/64" = 1'-0"

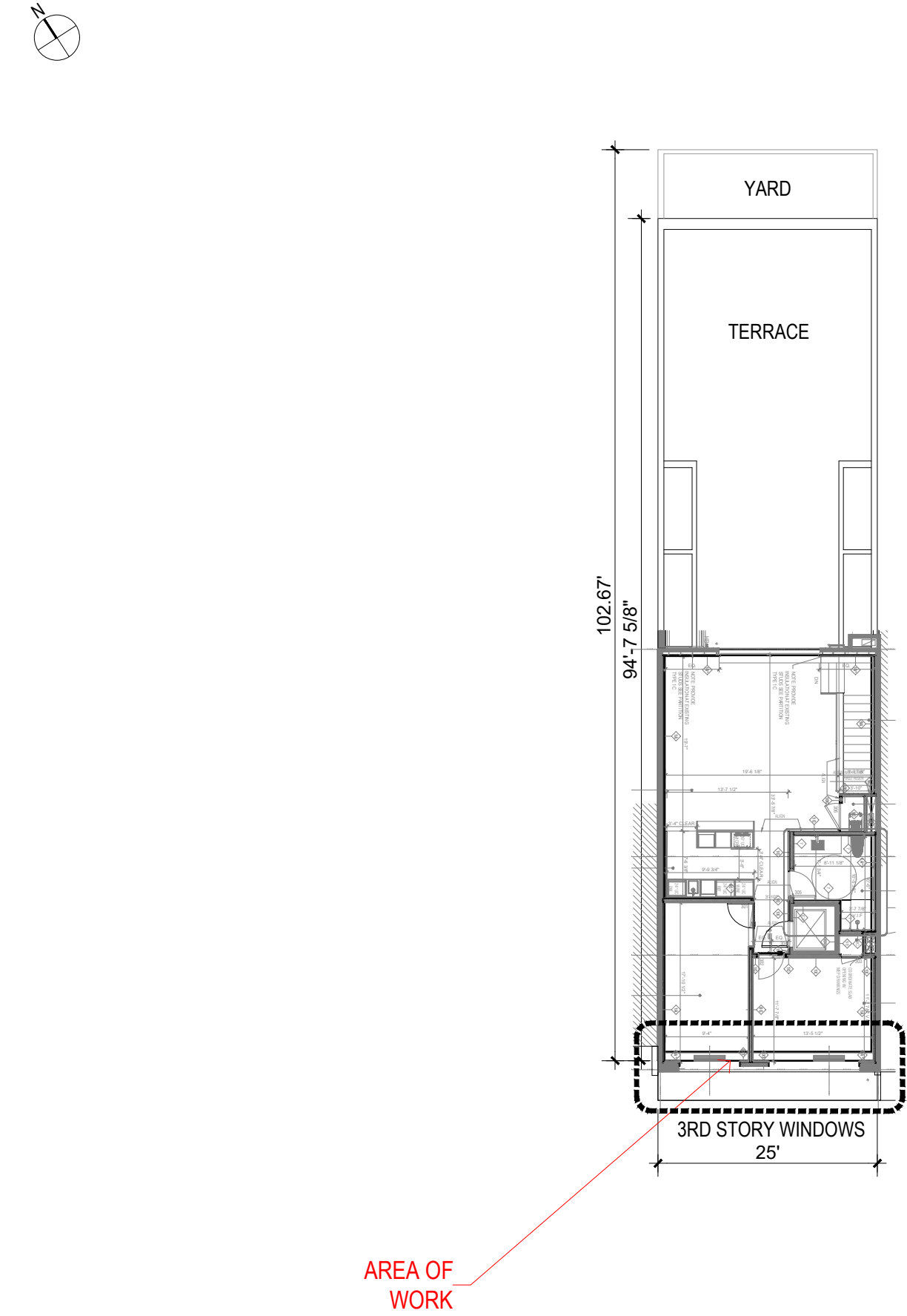


DRAWING LIST

ARCHITECTURAL	
LPC-01	COVER SHEET
LPC-02	DRAWING LIST, BROMLEY PLATE 28, UPPER EAST SIDE HISTORIC DISTRICT AND PLOT PLANS
LPC-03	SOUTH FACADE EXISTING CONDITION, LPC DESIGNATION & TAX PHOTOS
LPC-04	EXISTING APPROACH PHOTOS AND VISIBILITY DIAGRAM
LPC-05	EXISTING CONDITION PHOTOS AND VISIBILITY DIAGRAM
LPC-06	SOUTH ELEVATION EXISTING AND PROPOSED - RENDERING
LPC-07	SOUTH ELEVATION EXISTING/DEMO AND PROPOSED
LPC-08	ENLARGED EXISTING/DEMO SECTION ENLARGED PROPOSED SECTION
LPC-09	ENLARGED PLAN, ELEVATION AND SECTION
LPC-10	ENLARGED SECTIONS AND DETAILS
LPC-11	PROPOSED FACADE AND ENLARGED RENDERING

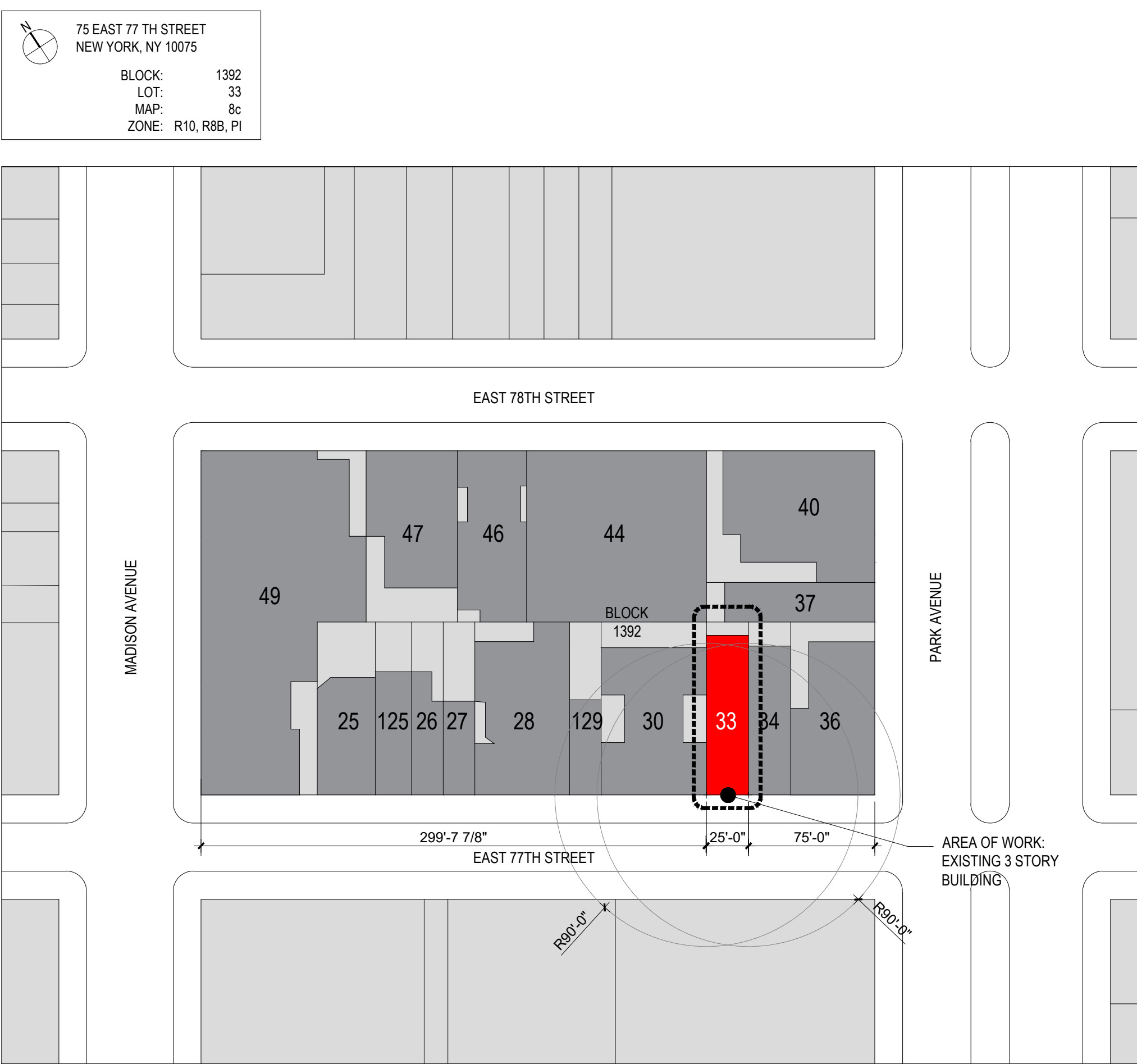
ENLARGED PLOT PLAN

SCALE: 1/16" = 1'-0"



PLOT PLAN

SCALE: 1/64" = 1'-0"



RELATED LANDMARKS PRESERVATION FILINGS

LPC DOCKET NUMBER: LPC-25-01157
LPC DOCKET NUMBER: LPC-26-00815 (WATER LEAK AT CELLAR)
LPC DOCKET NUMBER: LPC-26-01027 (SECOND FLOOR WINDOWS)
LPC DOCKET NUMBER: LPC-26-01026 (THIRD FLOOR WINDOWS)

SYMBOL LEGEND

ROOM NAME	ROOM TAG
X-XX	
000-00	
X	
X	
XX	

DOOR TAG	PARTITION TYPE

KEYNOTE	DETAIL TAG

OCT 14, 2025 ISSUED TO LPC
OCT 13, 2025 ISSUED TO CB8

ARCHITECT: **HS2ARCHITECTURE**
414 BROADWAY
NEW YORK, NY 10013
TEL 212.219.1567
WWW.HS2ARCHITECTURE.COM

PROJECT NO.: 2405

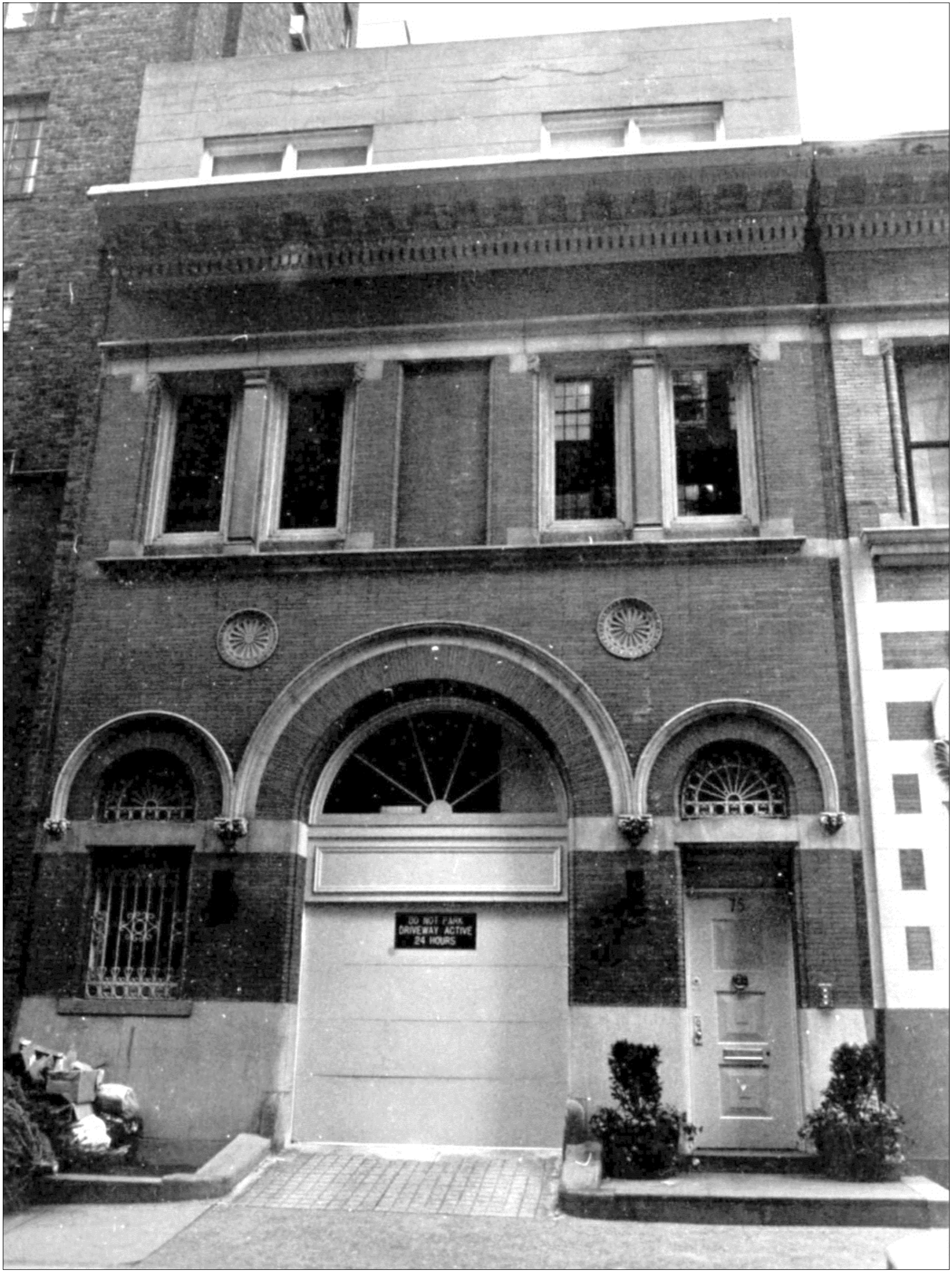
SCALE: AS NOTED DRAWN BY: ES

TITLE: DRAWING LIST, BROMLEY PLATE 28, UPPER EAST SIDE HISTORIC DISTRICT AND PLOT PLANS

LPC-02



1 SOUTH ELEVATION - 1940'S TAX PHOTO LOOKING EAST
SCALE: NONE



2 SOUTH ELEVATION - LPC'S DESIGNATION PHOTO
SCALE: NONE



3 SOUTH ELEVATION - EXISTING CONDITION (LPC APPROVED 2004 APPLICATION)
SCALE: NONE

OCT 14, 2025 ISSUED TO LPC
OCT 13, 2025 ISSUED TO CB8

ARCHITECT: **HS2ARCHITECTURE**
414 BROADWAY
NEW YORK, NY 10013
TEL 212.219.1567
WWW.HS2ARCHITECTURE.COM

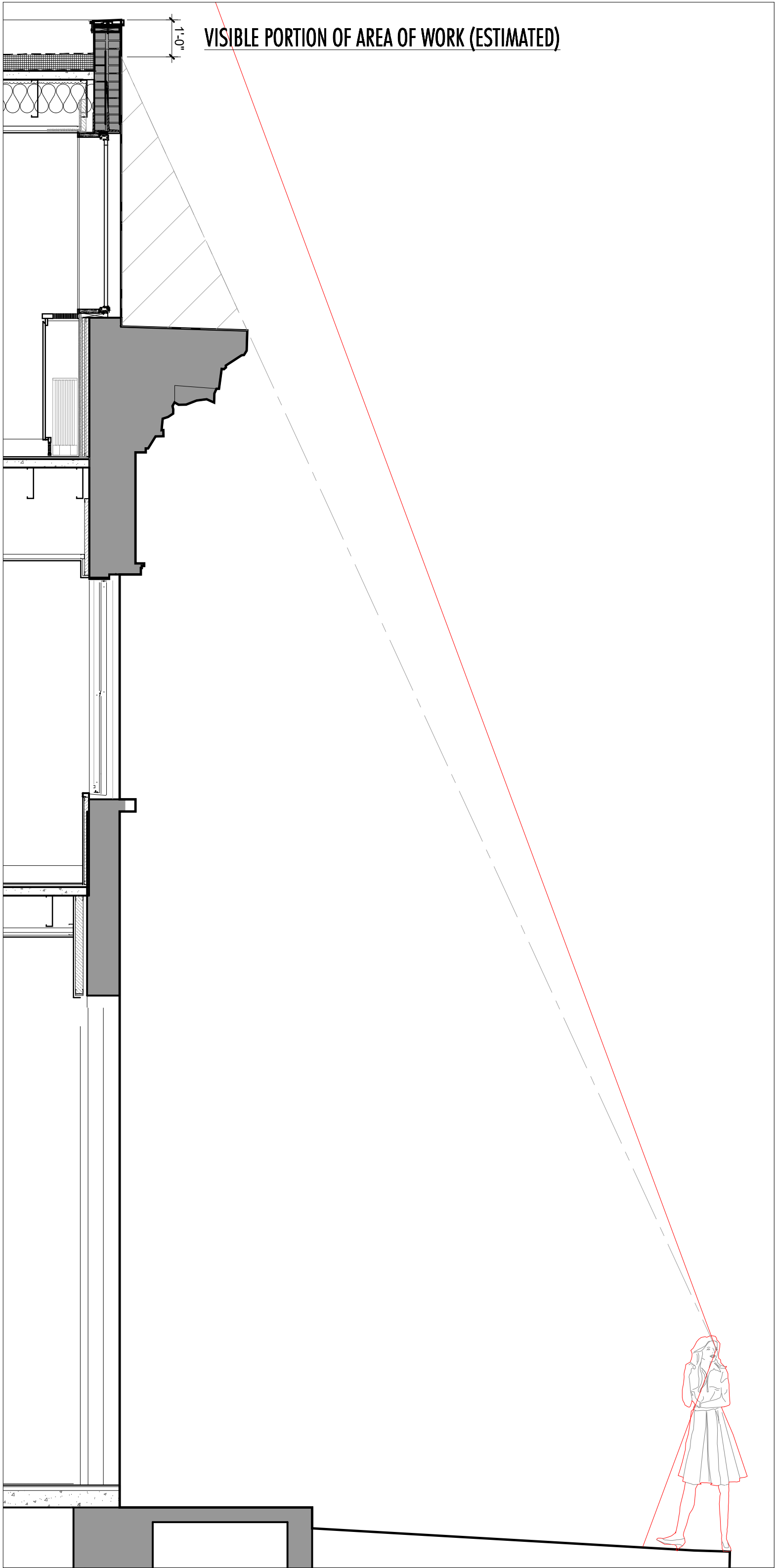
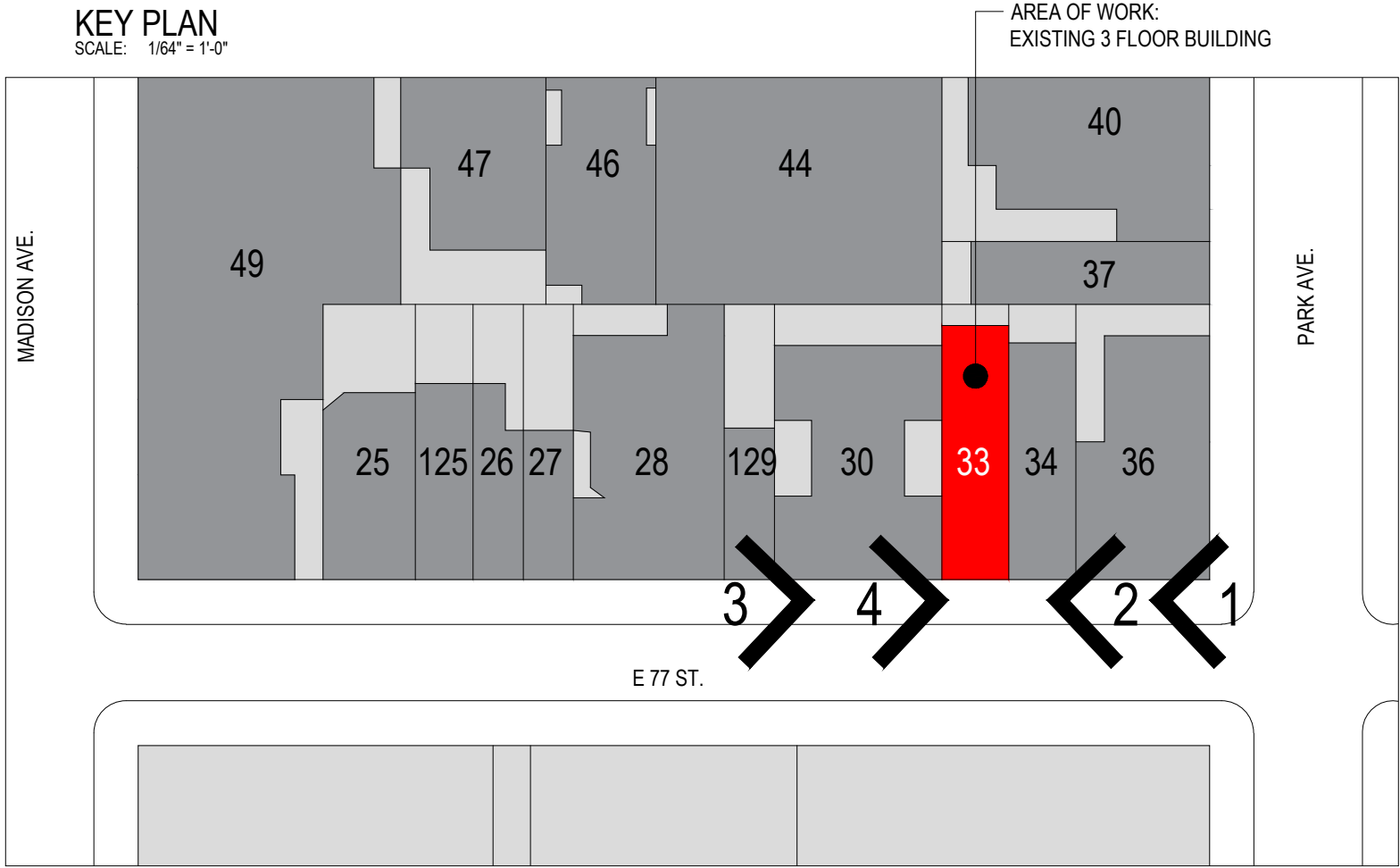
PROJECT NO.: 2405

SCALE: NONE DRAWN BY: ES

TITLE: SOUTH FACADE TAX, LANDMARKS
& EXISTING CONDITION PHOTOS

LPC-03

All drawings and design are the copyright property of HS2 ARCHITECTURE. Reproduction of the drawings, specifications, related documents, and design, in whole or in part is strictly forbidden without written permission.
©HS2 ARCHITECTURE 2025



SIDEWALK SIGHT LINES DIAGRAM SHOWING AREA OF WORK OBSTRUCTED



1 APPROACH FROM PARK AVENUE (OBSTRUCTED VIEW)
SCALE: NONE



2 APPROACH FROM PARK AVENUE (OBSTRUCTED VIEW)
SCALE: NONE



3 APPROACH FROM MADISON AVENUE (OBSTRUCTED VIEW)
SCALE: NONE



4 APPROACH FROM MADISON AVENUE (OBSTRUCTED VIEW)
SCALE: NONE

OCT 14, 2025 ISSUED TO LPC
OCT 13, 2025 ISSUED TO CB8

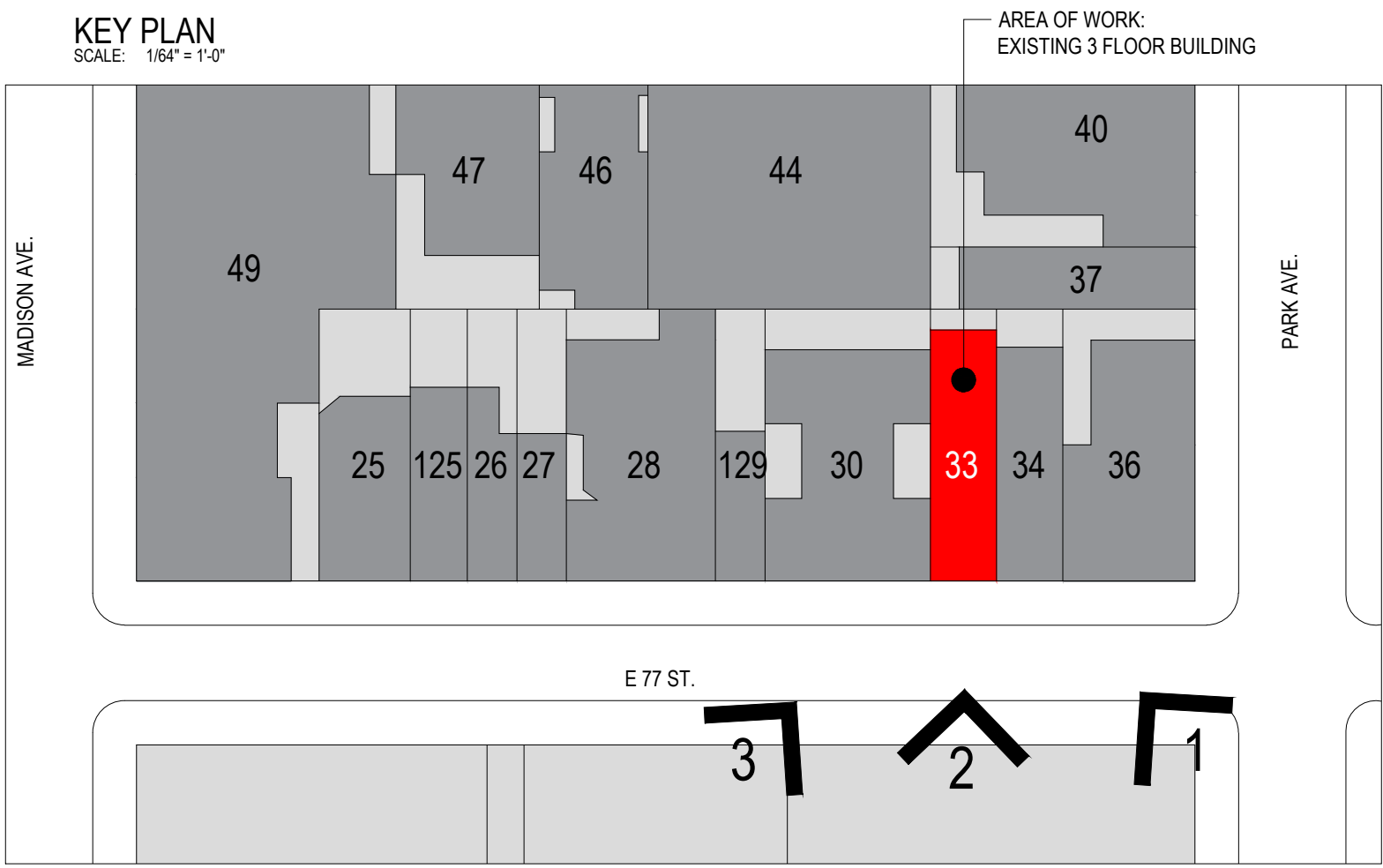
ARCHITECT: **HS2ARCHITECTURE**
414 BROADWAY
NEW YORK, NY 10013
TEL 212.219.1567
WWW.HS2ARCHITECTURE.COM

PROJECT NO.: 2405

SCALE: NONE DRAWN BY: ES

TITLE: EXISTING APPROACH PHOTOS
AND VISIBILITY DIAGRAM

LPC-04



1 SOUTH FACADE - EXISTING CONDITION - LOOKING EAST
SCALE: NONE



2 SOUTH FACADE - EXISTING CONDITION - FRONT VIEW
SCALE: NONE



SIDEWALK SIGHT LINES DIAGRAM SHOWING AREA OF WORK



3 SOUTH FACADE - EXISTING CONDITION - LOOKING WEST
SCALE: NONE

OCT 14, 2025 ISSUED TO LPC
OCT 13, 2025 ISSUED TO C88

ARCHITECT: **HS2ARCHITECTURE**
414 BROADWAY
NEW YORK, NY 10013
TEL 212.219.1567
WWW.HS2ARCHITECTURE.COM

PROJECT NO.: 2405

SCALE: NONE DRAWN BY: ES

TITLE: SOUTH FACADE EXISTING CONDITION PHOTOS
AND VISIBILITY DIAGRAM

LPC-05

- STUCCO AND WINDOW FRAME TO BE PAINTED TO MATCH LIMESTONE.
- SHADOW BOX TO BE PAINTED TO MATCH LIMESTONE.



1 SOUTH ELEVATION - EXISTING
SCALE: NONE



2 SOUTH ELEVATION - PROPOSED
SCALE: NONE

OCT 14, 2025 ISSUED TO LPC
OCT 13, 2025 ISSUED TO CB8

ARCHITECT: **HS2ARCHITECTURE**
414 BROADWAY
NEW YORK, NY 10013
TEL 212.219.1567
WWW.HS2ARCHITECTURE.COM

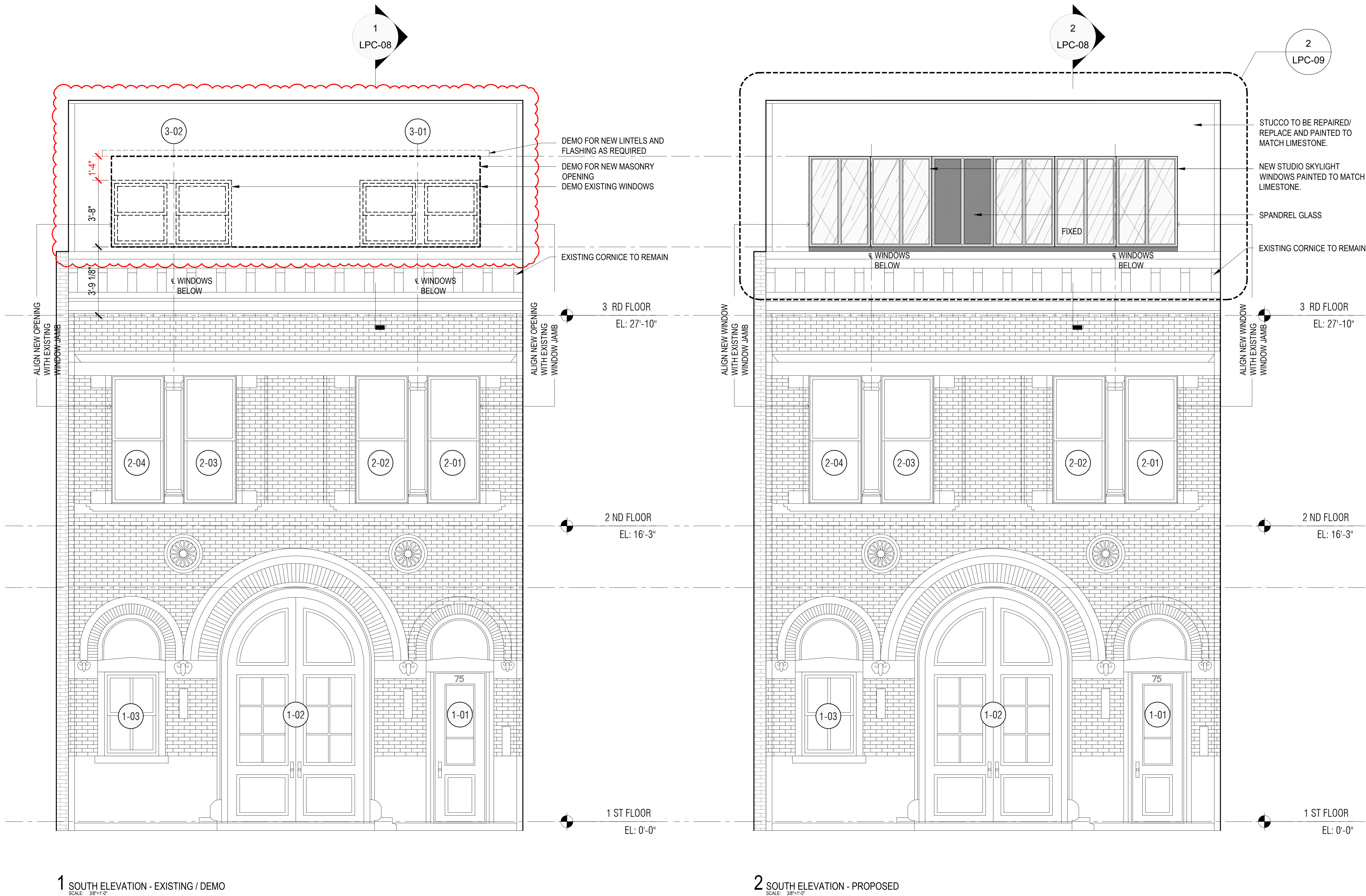
PROJECT NO.: 2405

SCALE: AS NOTED DRAWN BY: ES

TITLE: RENDERINGS
SOUTH ELEVATION EXISTING & PROPOSED

LPC-06

All drawings and design are the copyright property of HS2 ARCHITECTURE. Reproduction of the drawings, specifications, related documents, and design, in whole or in part is strictly forbidden without written permission.
©HS2 ARCHITECTURE 2025



OCT 14, 2025 ISSUED TO LPC
OCT 13, 2025 ISSUED TO CB8

ARCHITECT:

HS2ARCHITECTURE

414 BROADWAY
NEW YORK, NY 10013
TEL 212.219.1567

WWW.HS2ARCHITECTURE.COM

PROJECT NO.: 2405

SCALE: AS NOTED

DRAWN BY: ES

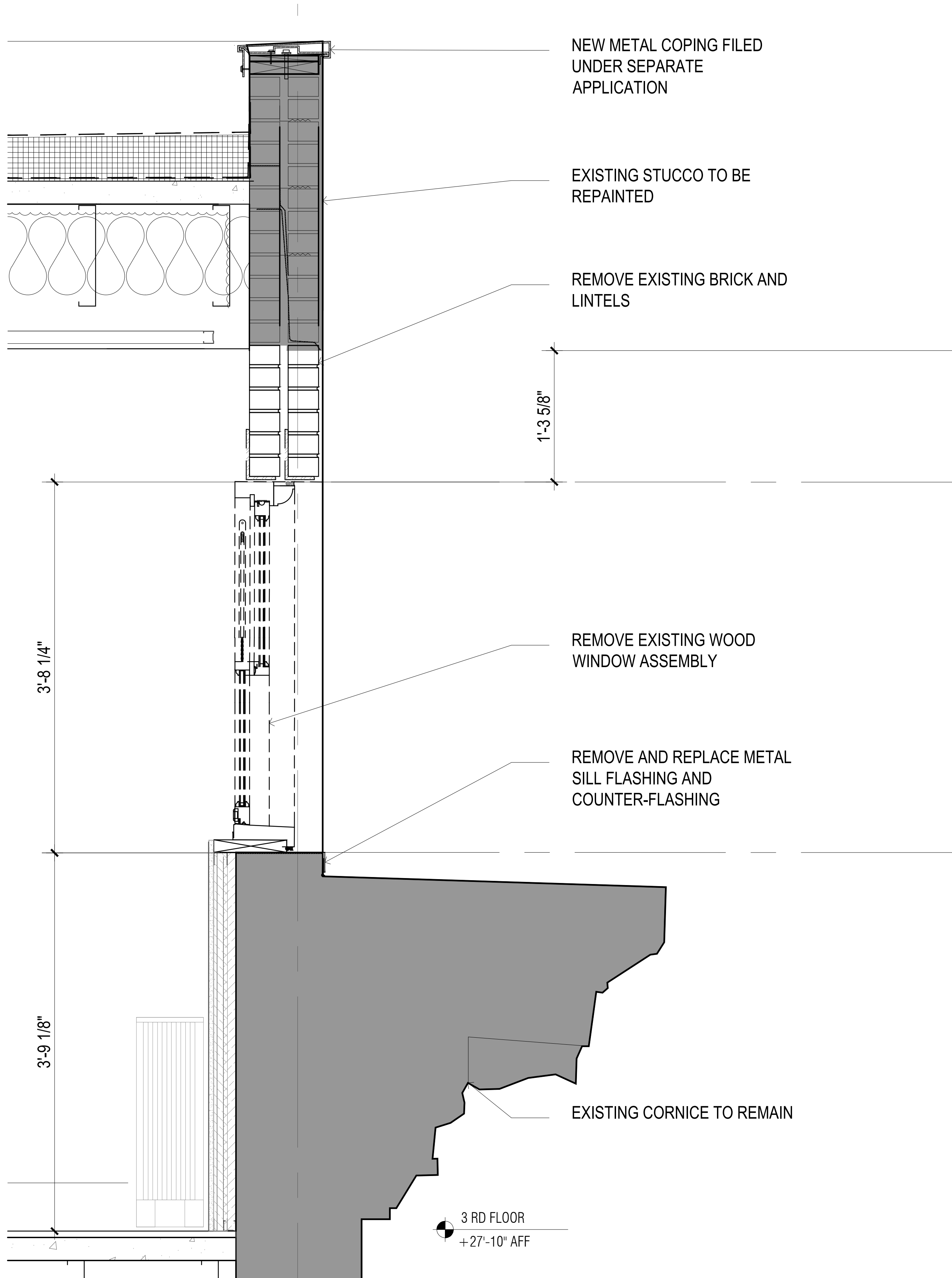
TITLE:

SOUTH ELEVATION EXISTING/DEMO AND PROPOSED

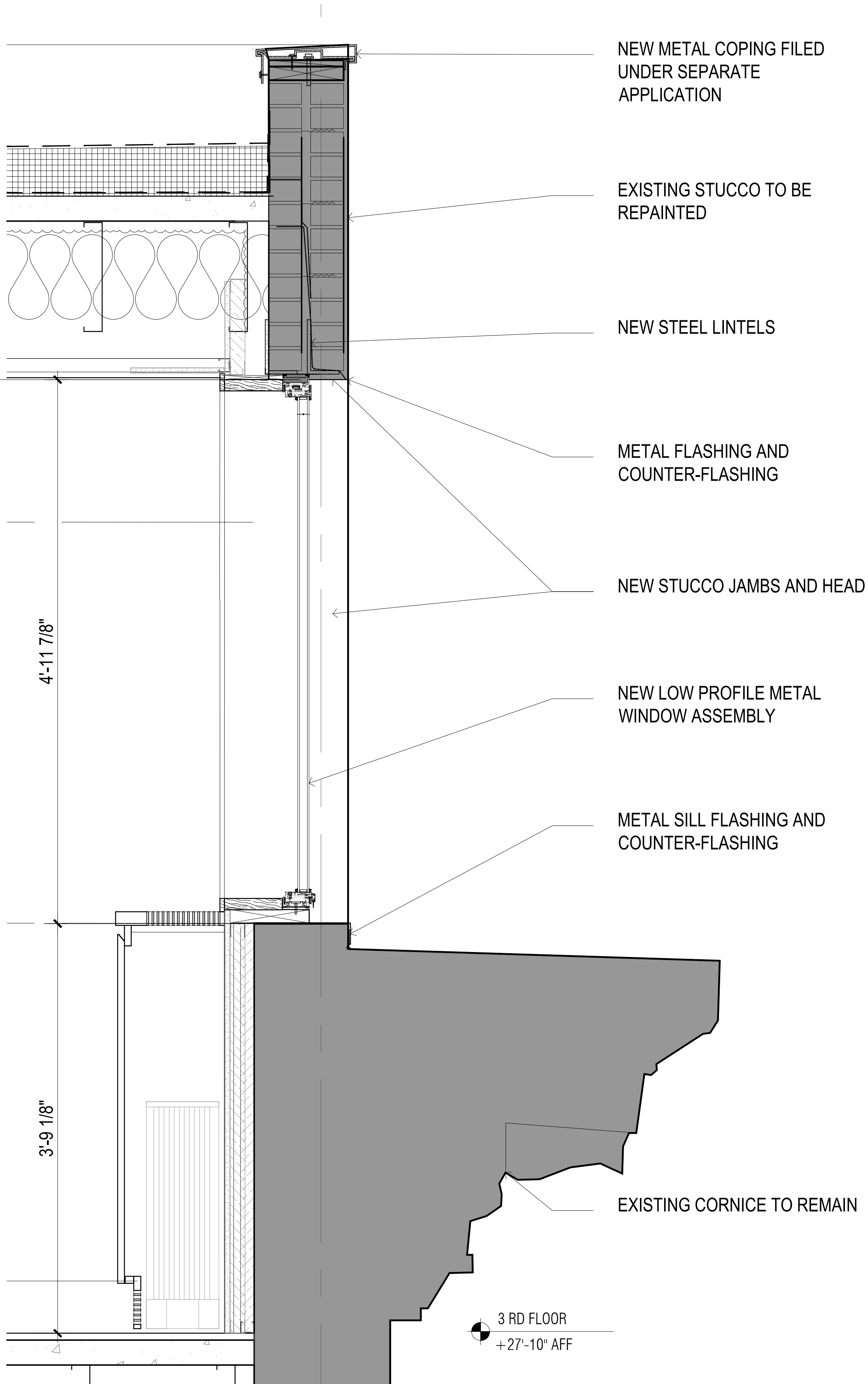
LPC-07

All drawings and design are the copyright property of HS2 ARCHITECTURE. Reproduction of the drawings, specifications, related documents, and design, in whole or in part is strictly forbidden without written permission.
©HS2 ARCHITECTURE 2025

- STUCCO AND WINDOW FRAME TO BE PAINTED TO MATCH LIMESTONE.
- SHADOW BOX TO BE PAINTED TO MATCH LIMESTONE.



1 EXISTING/DEMO THIRD FLOOR SECTION
SCALE: 1 1/2"=1'-0"



2 PROPOSED THIRD FLOOR SECTION
SCALE: 1 1/2"=1'-0"

OCT 14, 2025 ISSUED TO LPC
OCT 13, 2025 ISSUED TO CB8

ARCHITECT: **HS2ARCHITECTURE**
414 BROADWAY
NEW YORK, NY 10013
TEL 212.219.1567
WWW.HS2ARCHITECTURE.COM

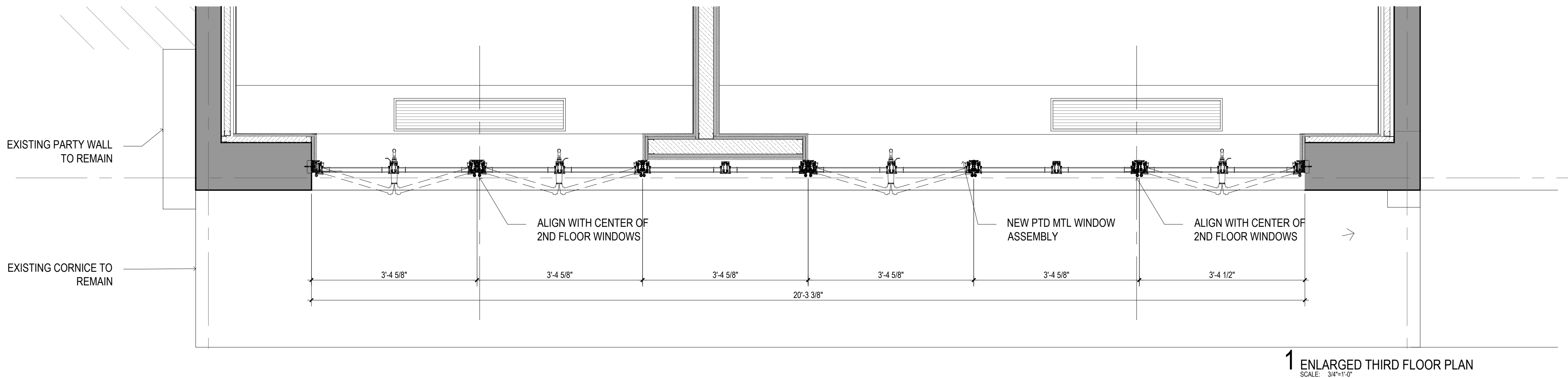
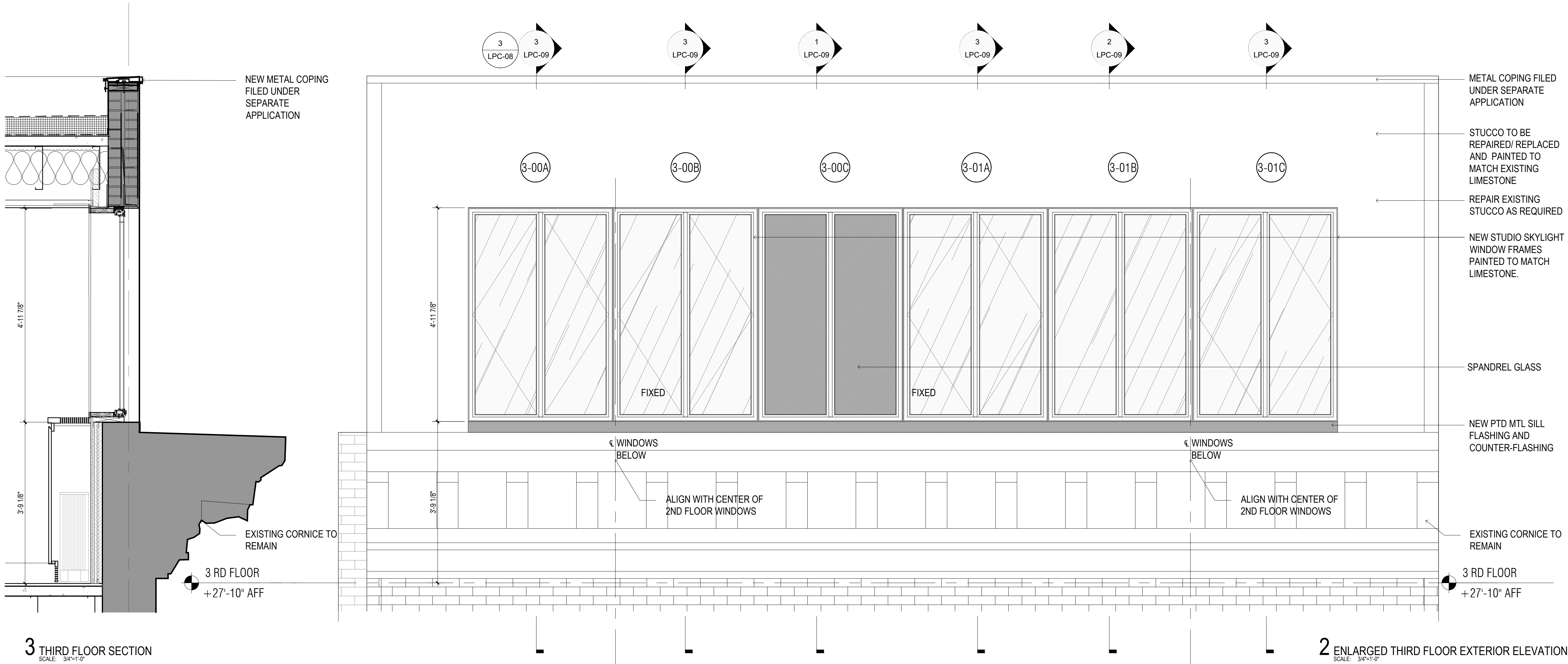
PROJECT NO.: 2405

SCALE: AS NOTED DRAWN BY: ES

TITLE: ENLARGED EXISTING SECTION
ENLARGED PROPOSED SECTION

LPC-08

- STUCCO AND WINDOW FRAME TO BE PAINTED TO MATCH LIMESTONE.
- SHADOW BOX TO BE PAINTED TO MATCH LIMESTONE.



OCT 14, 2025 ISSUED TO LPC
OCT 13, 2025 ISSUED TO CB8

ARCHITECT: **HS2ARCHITECTURE**
414 BROADWAY
NEW YORK, NY 10013
TEL 212.219.1567
WWW.HS2ARCHITECTURE.COM

PROJECT NO.: 2405

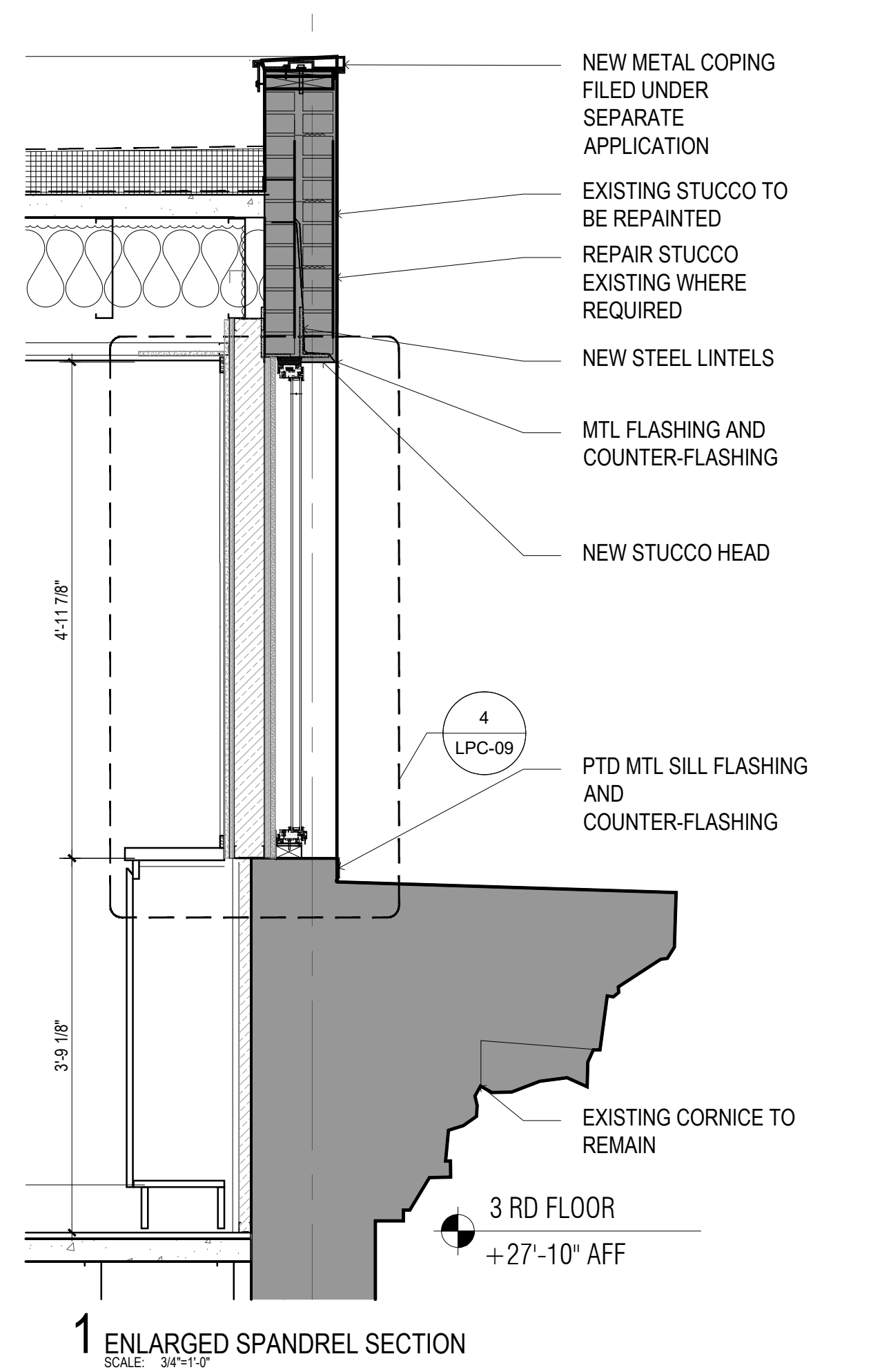
SCALE: AS NOTED DRAWN BY: ES

TITLE: ENLARGED THIRD FLOOR PLAN
ELEVATION AND SECTION

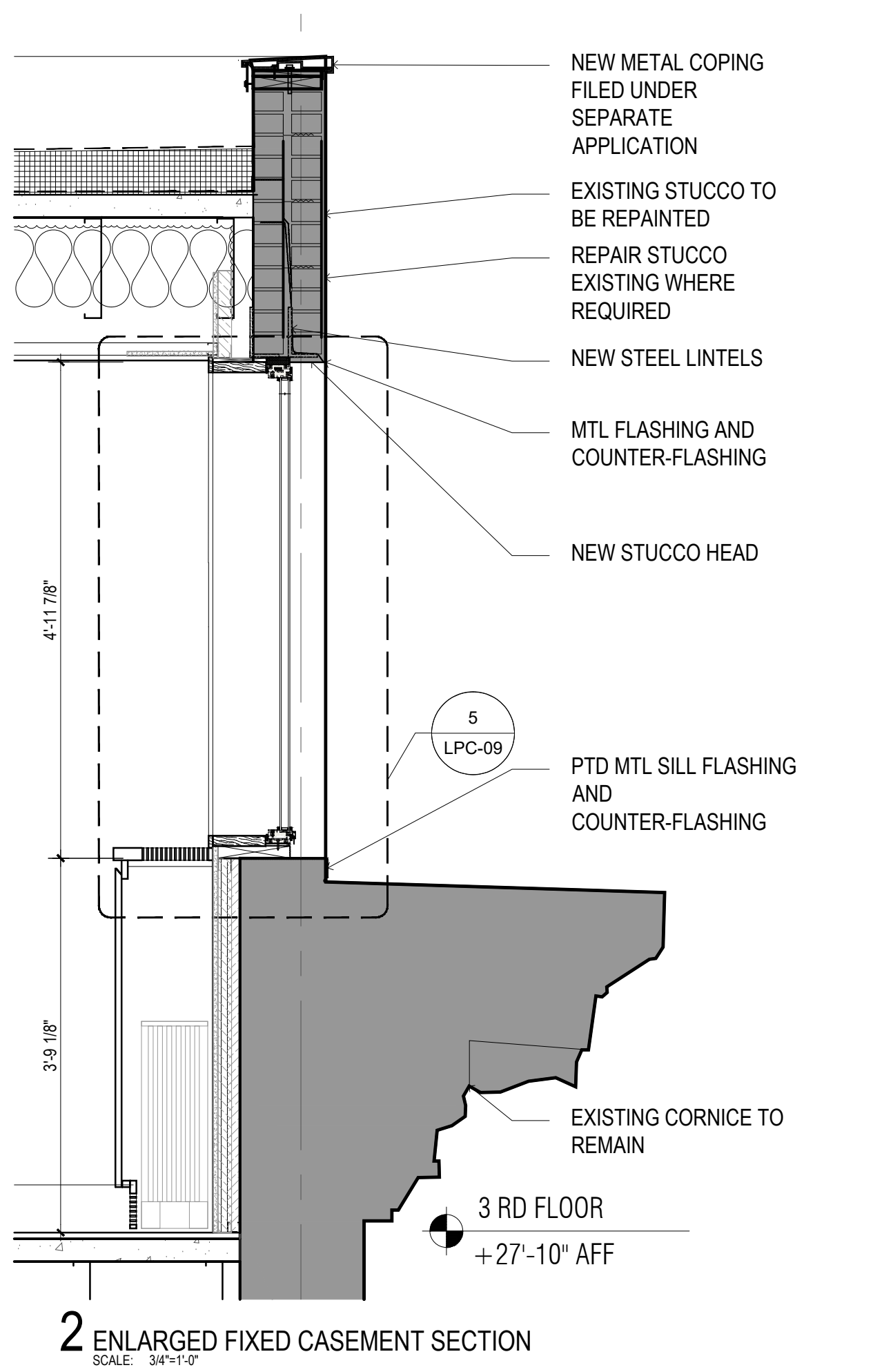
LPC-09

WINDOW TYPES

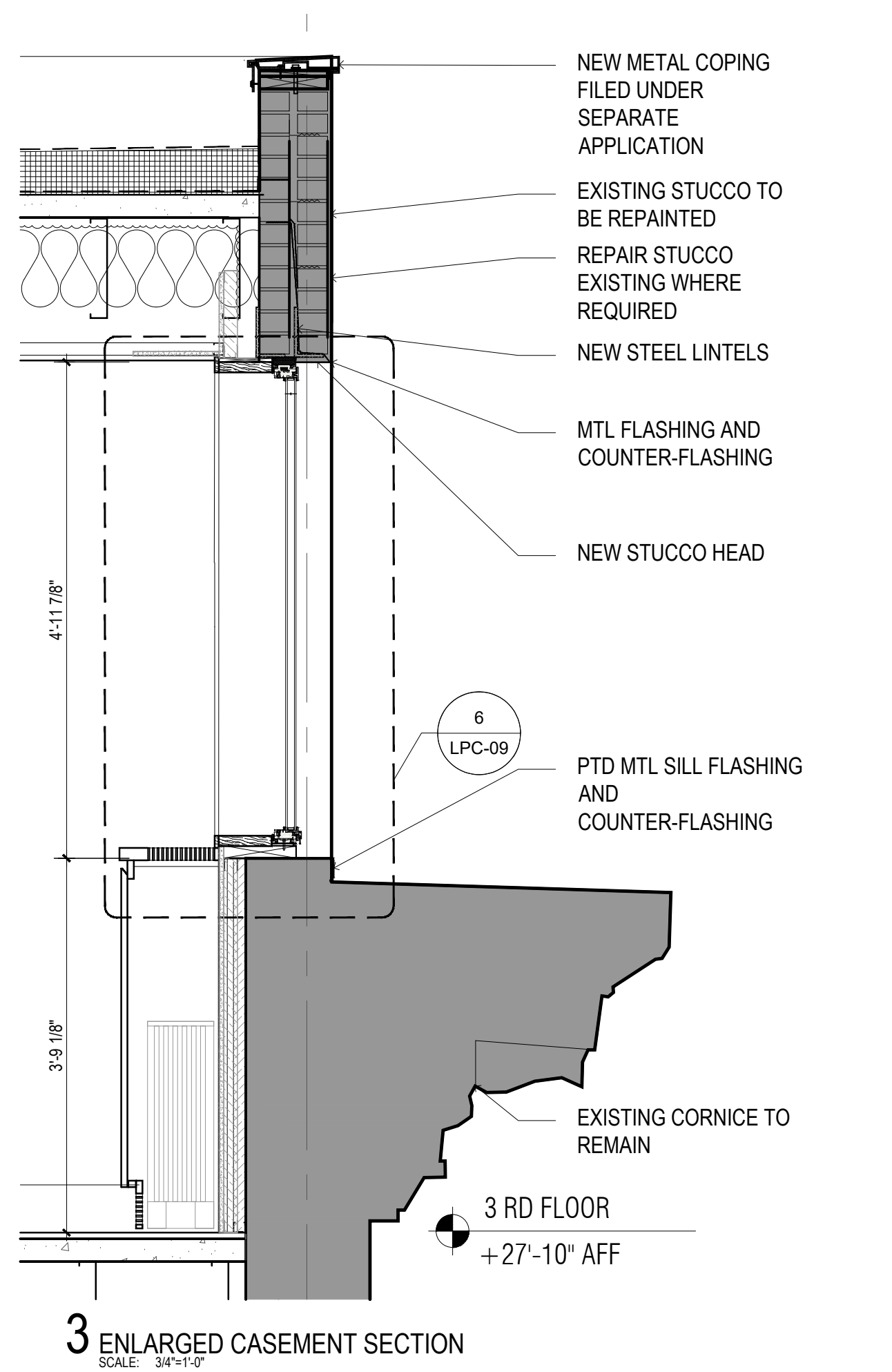
SPANDREL WINDOW IN CASEMENT FRAME



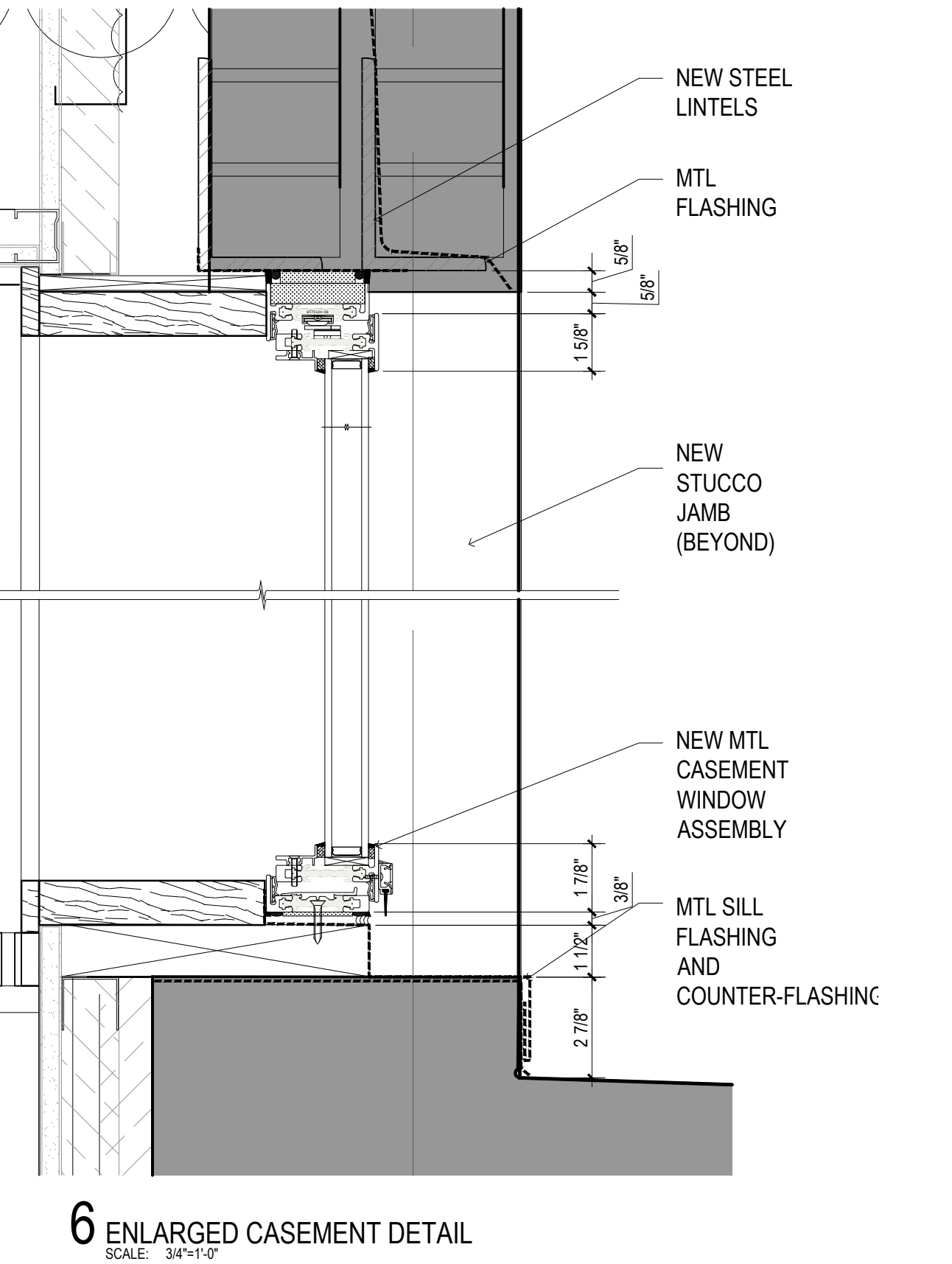
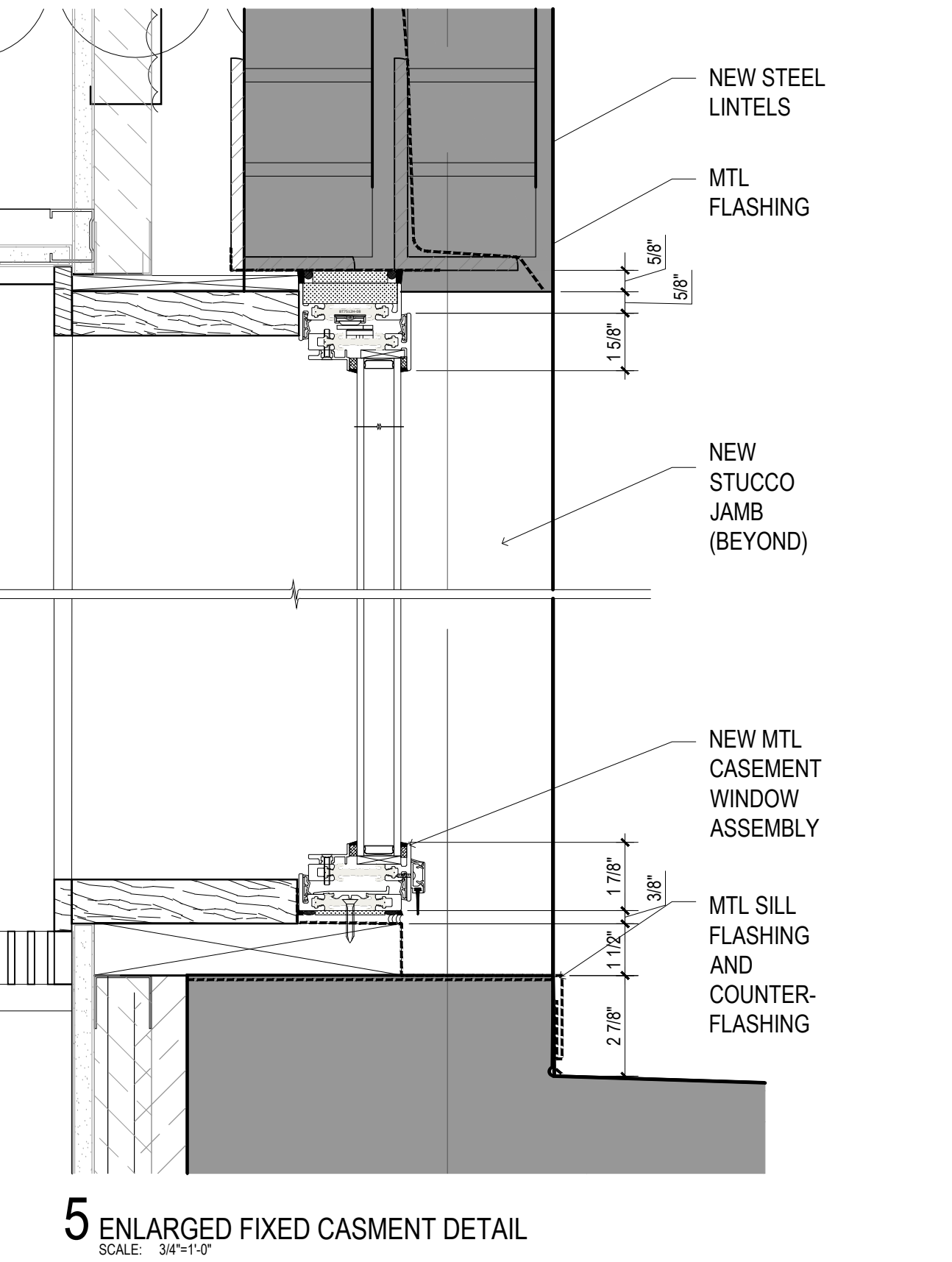
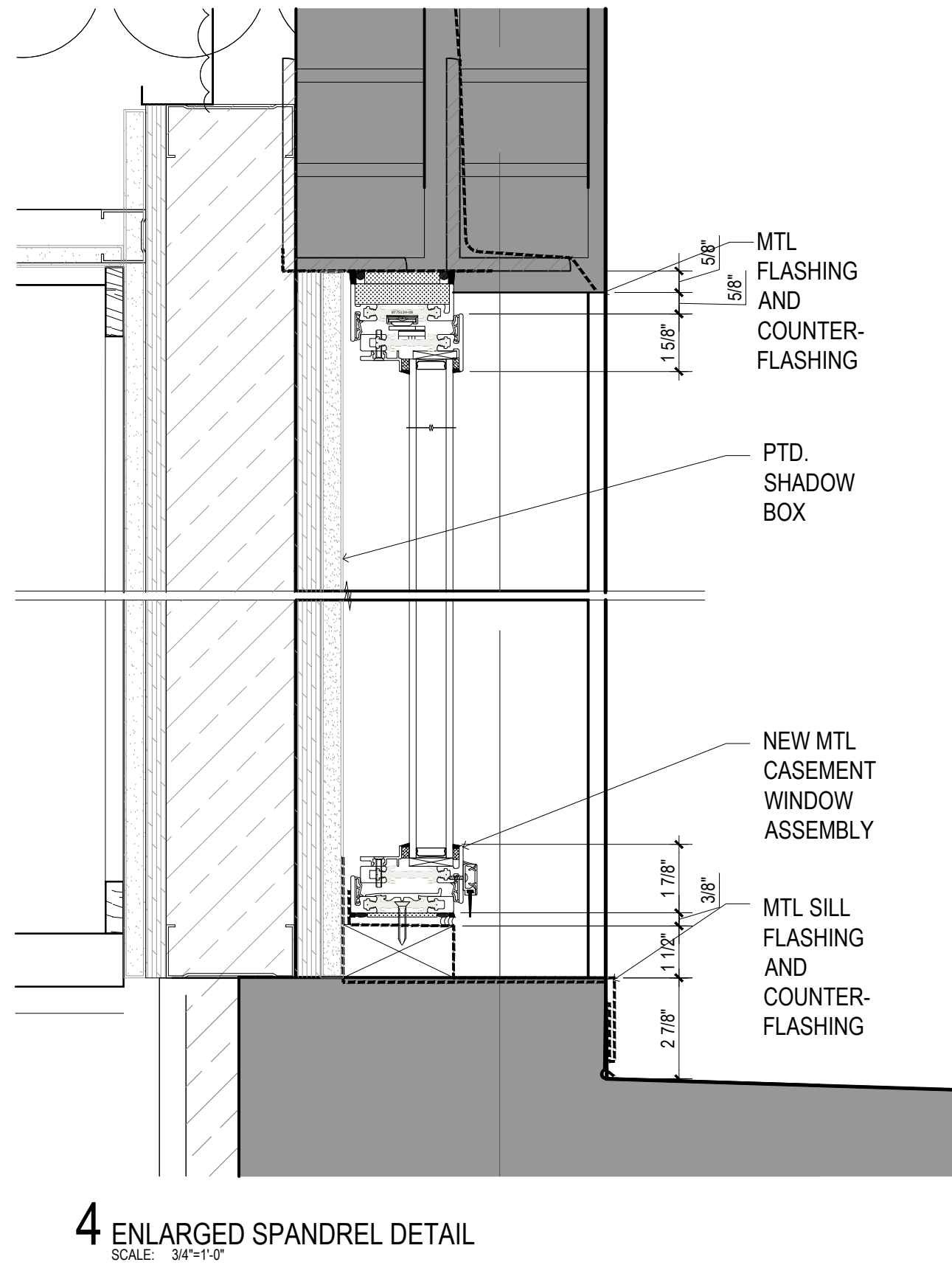
FIXED WINDOW IN CASEMENT FRAME



CASEMENT WINDOW



- STUCCO AND WINDOW FRAME TO BE PAINTED TO MATCH LIMESTONE.
- SHADOW BOX TO BE PAINTED TO MATCH LIMESTONE.



OCT 14, 2025 ISSUED TO LPC
OCT 13, 2025 ISSUED TO CB8

ARCHITECT: **HS2ARCHITECTURE**
414 BROADWAY
NEW YORK, NY 10013
TEL 212.219.1567
WWW.HS2ARCHITECTURE.COM

PROJECT NO.: 2405

SCALE: AS NOTED DRAWN BY: ES

TITLE: ENLARGED SECTIONS AND DETAILS

LPC-10

All drawings and design are the copyright property of HS2 ARCHITECTURE. Reproduction of the drawings, specifications, related documents, and design, in whole or in part is strictly forbidden without written permission.
©HS2 ARCHITECTURE 2025



1 SOUTH ELEVATION - PROPOSED
SCALE: NONE



2 SOUTH ELEVATION - PROPOSED ENLARGED
SCALE: NONE

OCT 14, 2025 ISSUED TO LPC
OCT 13, 2025 ISSUED TO CB8

ARCHITECT: **HS2ARCHITECTURE**
414 BROADWAY
NEW YORK, NY 10013
TEL 212.219.1567
WWW.HS2ARCHITECTURE.COM

PROJECT NO.: 2405

SCALE: AS NOTED DRAWN BY: ES

TITLE: SOUTH ELEVATION
PROPOSED AND ENLARGED RENDERINGS

LPC-11