

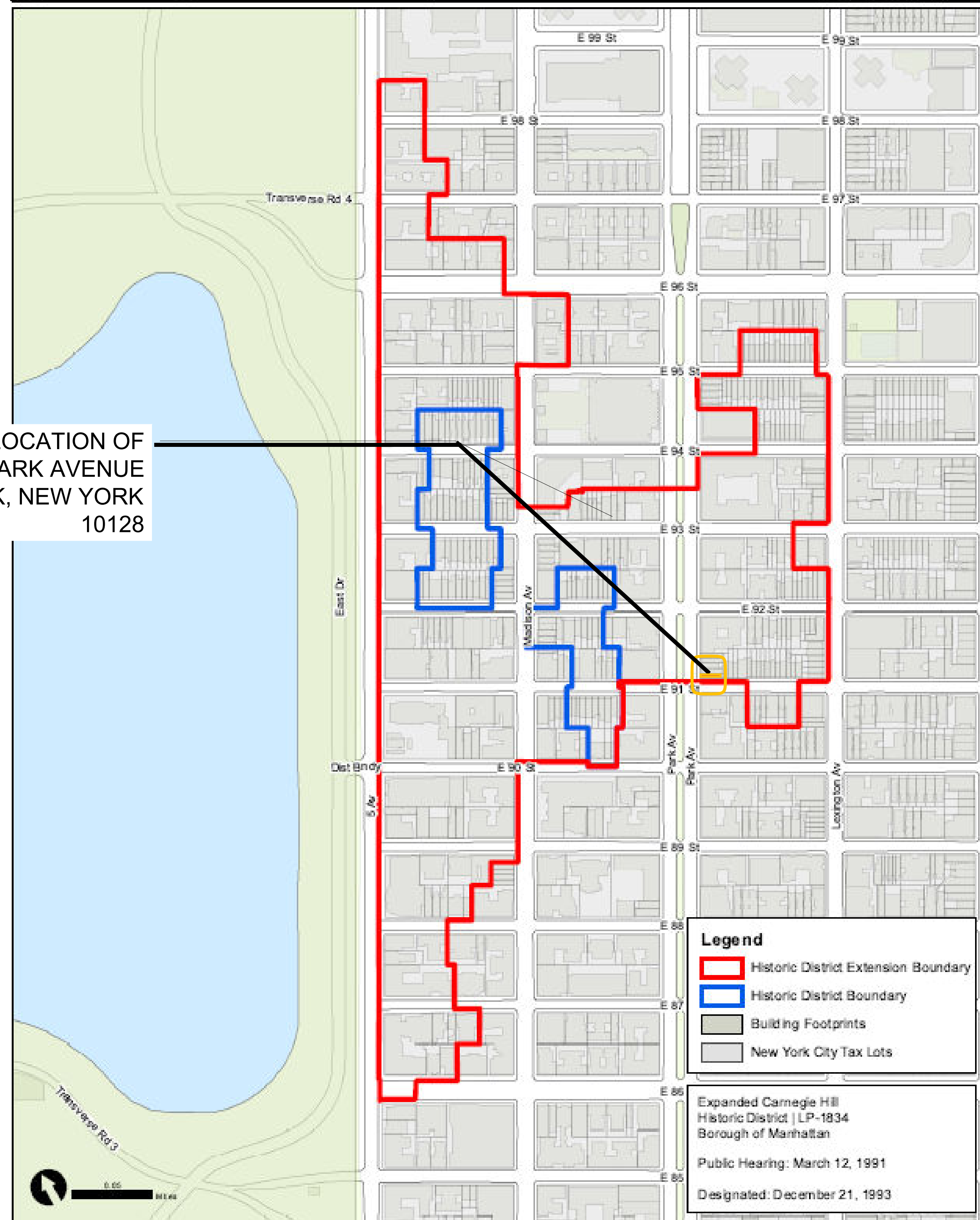
1143 PARK AVENUE

COMMUNITY BOARD #8
PRESUBMISSION LANDMARKS COMMITTEE PRESENTATION
SEPTEMBER 8th, 2025

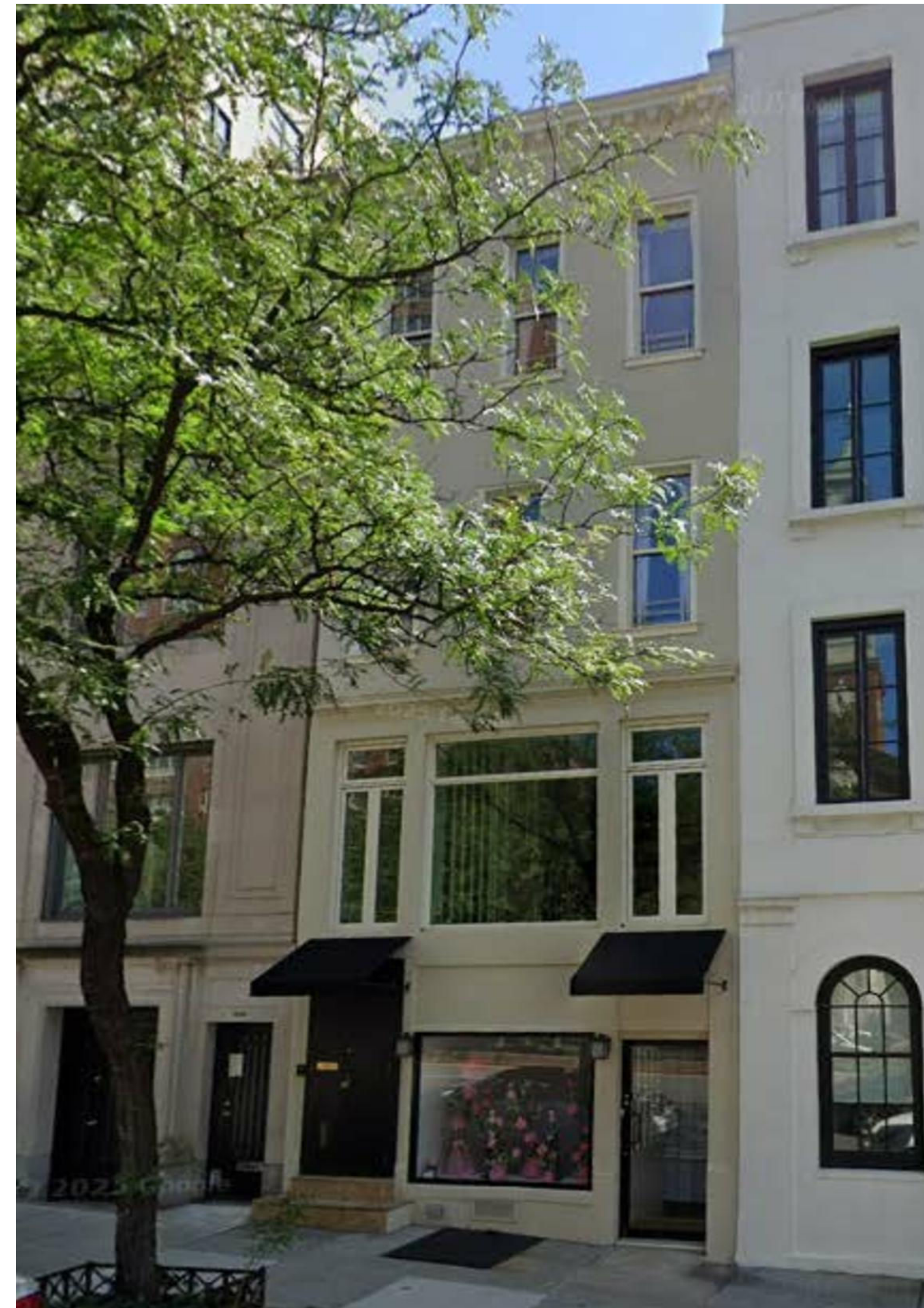
Expanded Carnegie Hill Historic District | LP-1834



LOCATION OF
1143 PARK AVENUE
NEW YORK, NEW YORK
10128

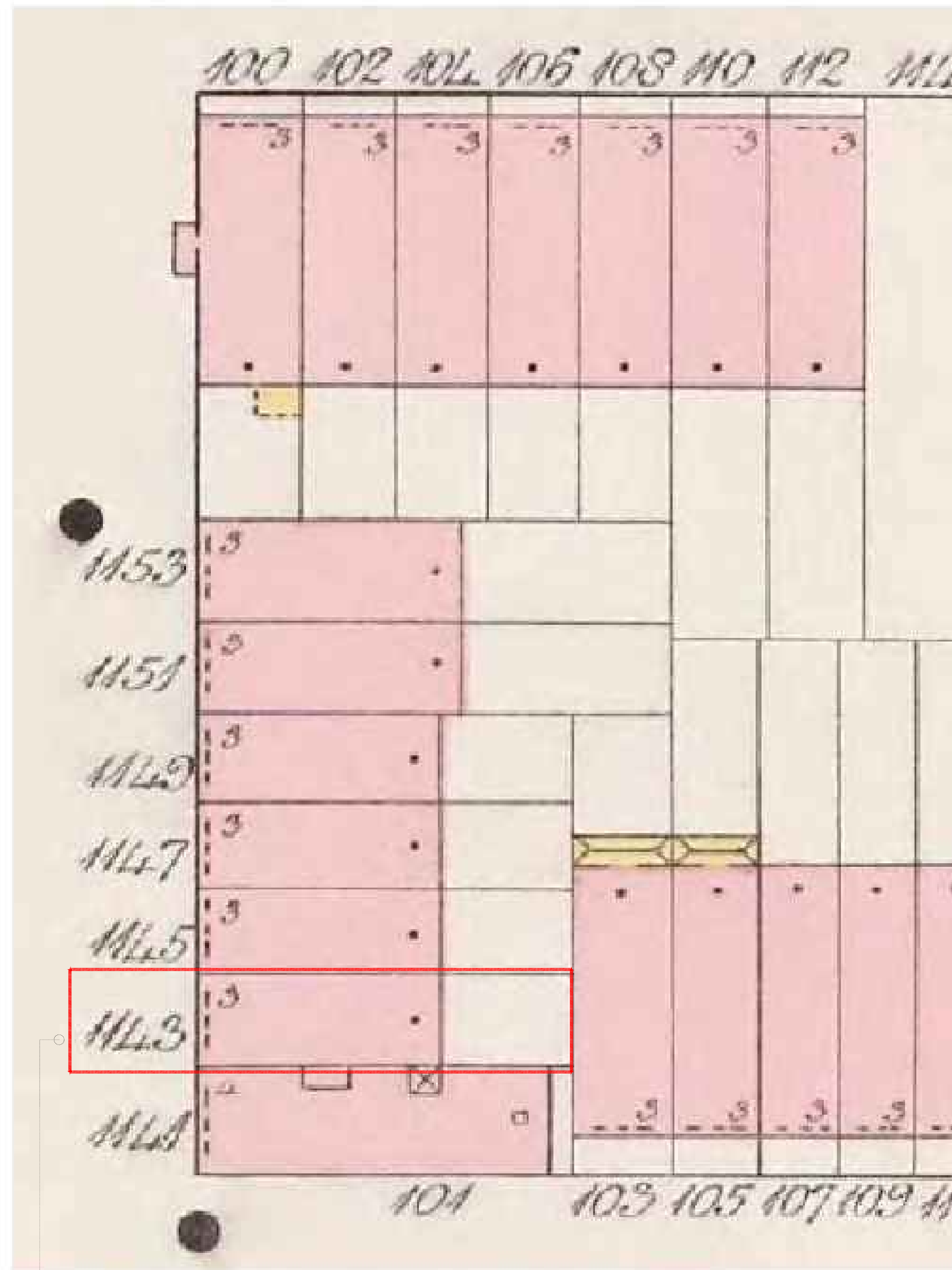


HISTORIC DISTRICT MAP | EXPANDED CARNEGIE HILL

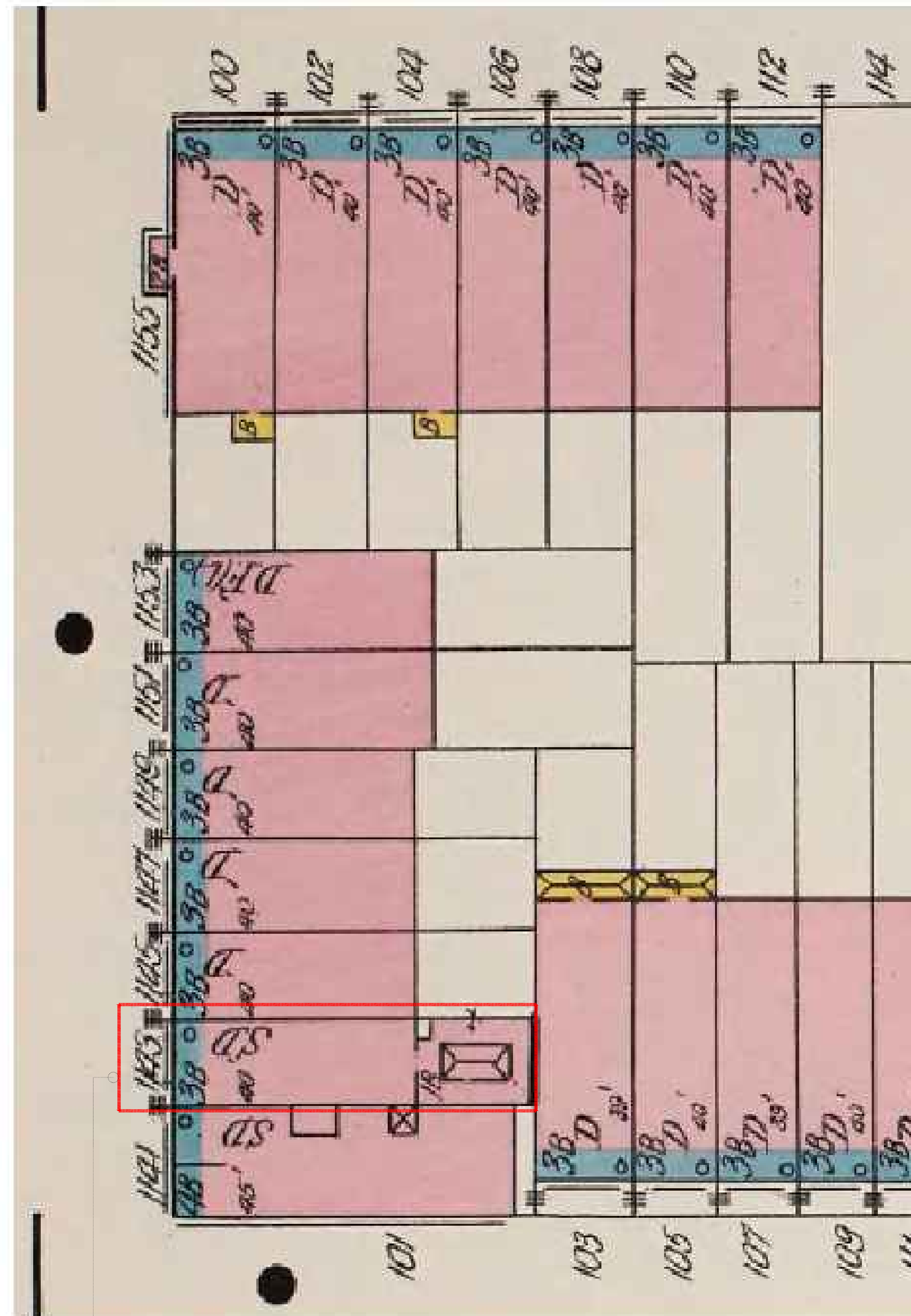


1143 PARK AVENUE FRONT FACADE

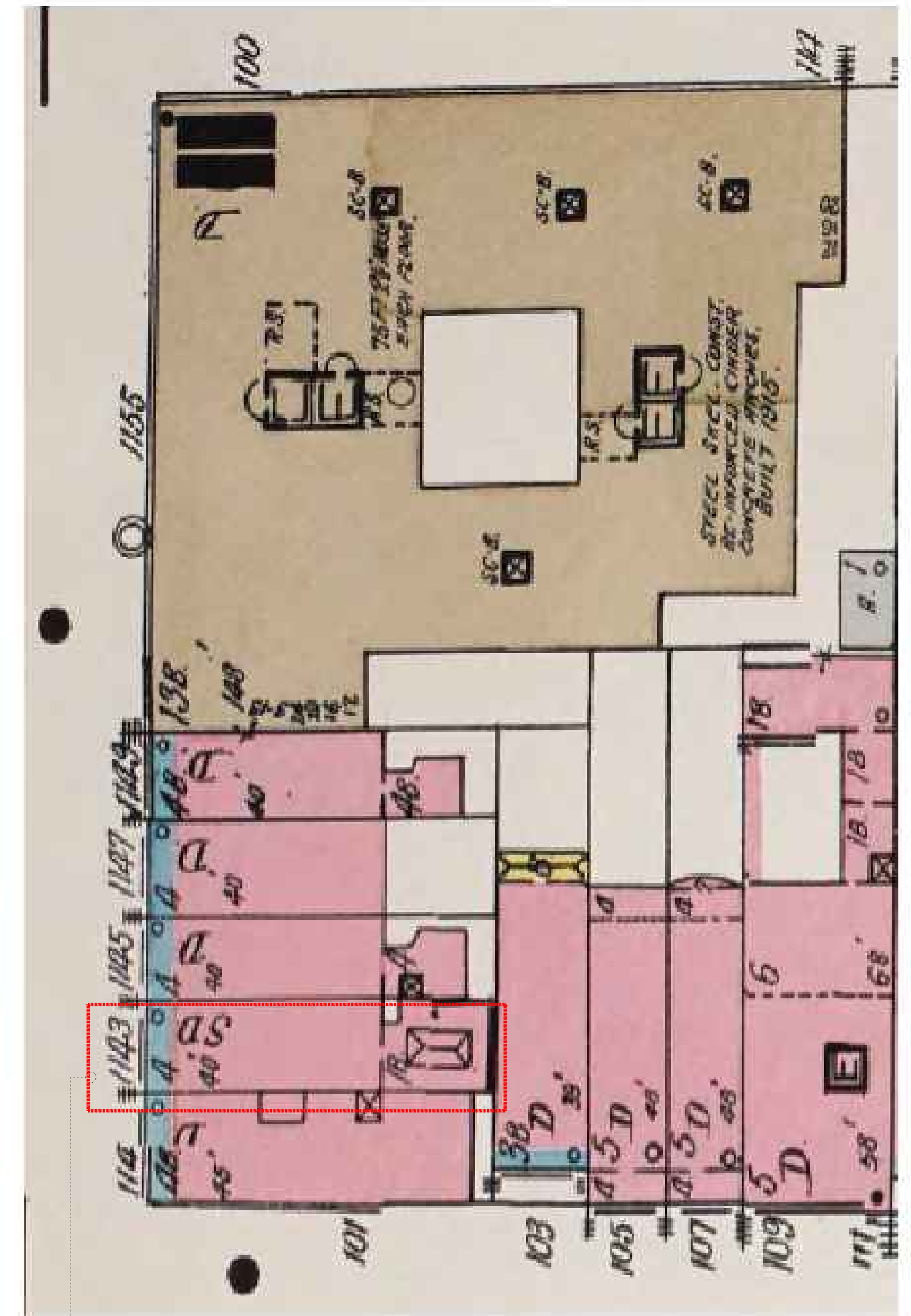
CURRENT CONDITIONS: HISTORIC DISTRICT MAP AND EXISTING PARK AVENUE FACADE



1143 PARK AVE
HISTORIC MAP 1896 SANBORN (NYPL)



1143 PARK AVE
HISTORIC MAP 1911 SANBORN (NYPL)



1143 PARK AVE
HISTORIC MAP 1939 SANBORN (NYPL)

SITE DEVELOPMENT: SANBOR MAPS AND HISTORIC SITE DEVELOPMENT



CURRENT



CURRENT

MARBLE STAIR NOT HISTORIC
(2) LEAF DOOR NOT HISTORIC
CURRENT AWNING NOT EXISTING

CURRENT DOOR
NOT HISTORIC



1940'S

STONE STAIR
NO DOOR
NO AWNING

WIDE WOOD
FRAME DOOR
WITH GLASS
PANEL

1143 PARK AVENUE BUILT IN NEO-GREC STYLE. COMPLETED IN 1885 BY JOHN SULLIVAN ARCHITECT AND LATER UNDATED IN 1924 BY EMERY ROTH ARCHITECT. BUILDING HAS SEVERAL AMENDMENTS AND ALTERATIONS. TOWNHOUSE OF 4-STORIES WITH CELLAR, COMMERCIAL SPACE AT GROUND AND PARLOR FLOORS (2) STORIES, RESIDENTIAL SPACE AT 3RD AND 4TH FLOORS, AND OUTDOOR DECK AT REAR YARD.

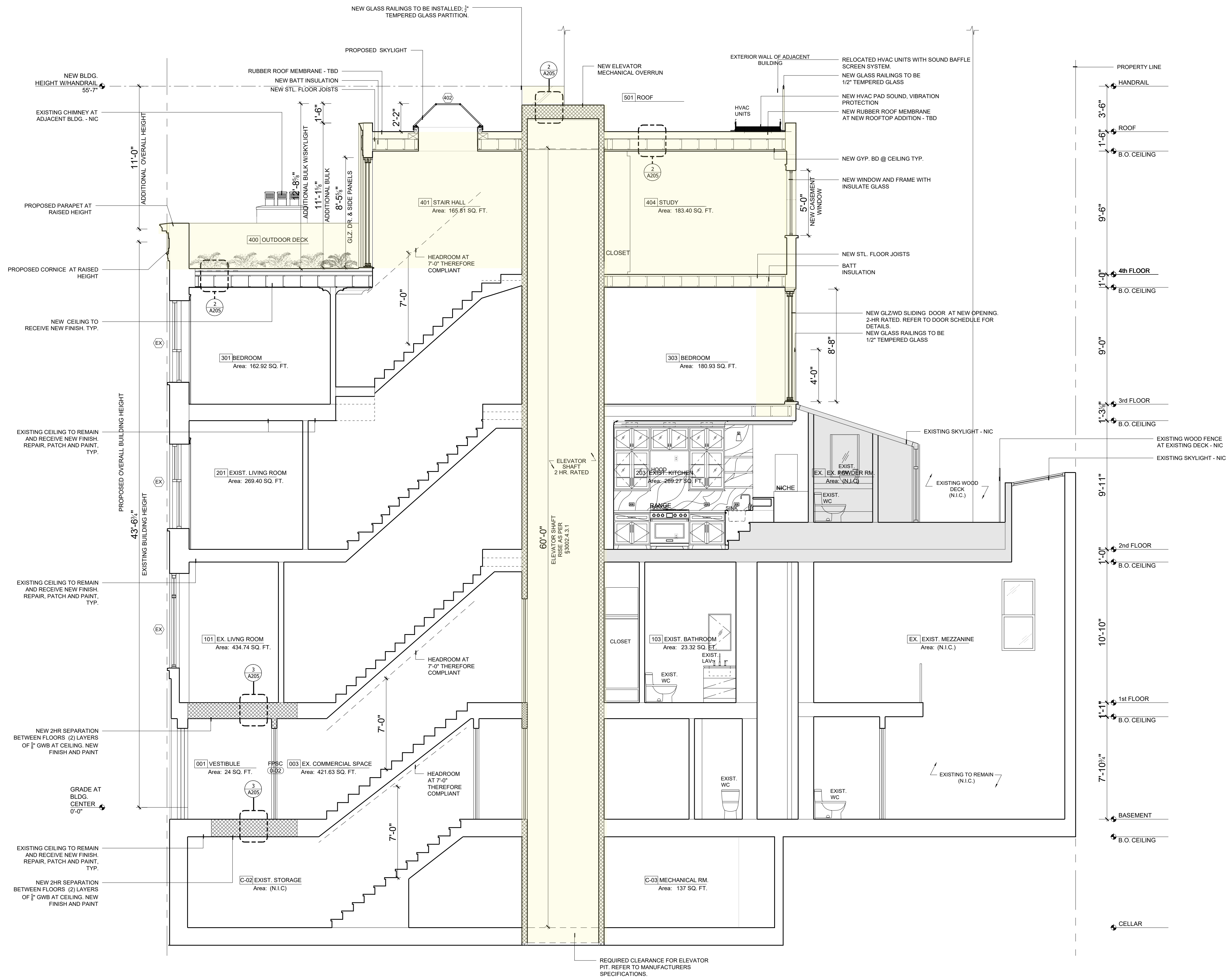
HISTORICAL CONTEXT



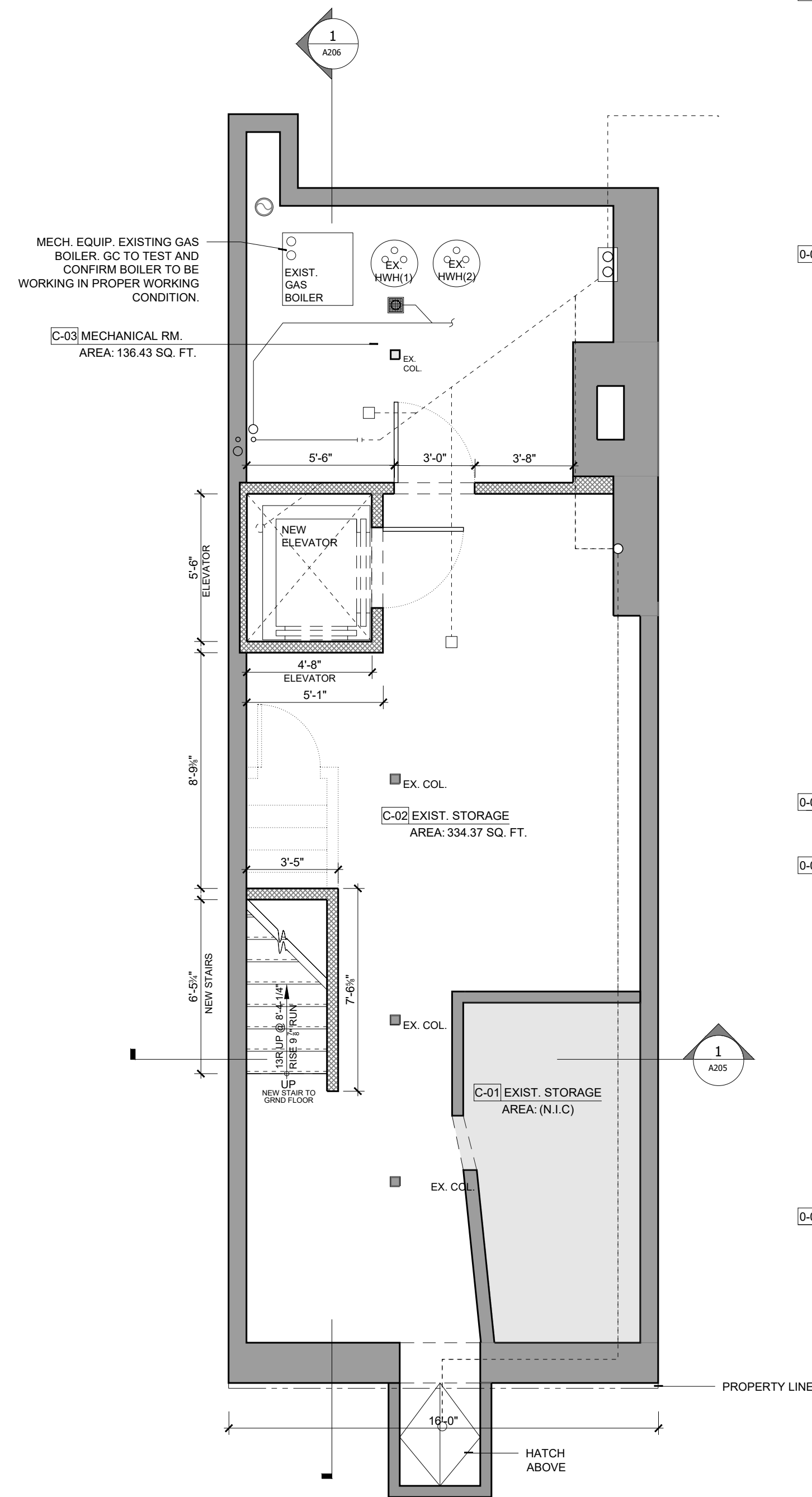
EXISTING FRONT FACADE ELEVATION



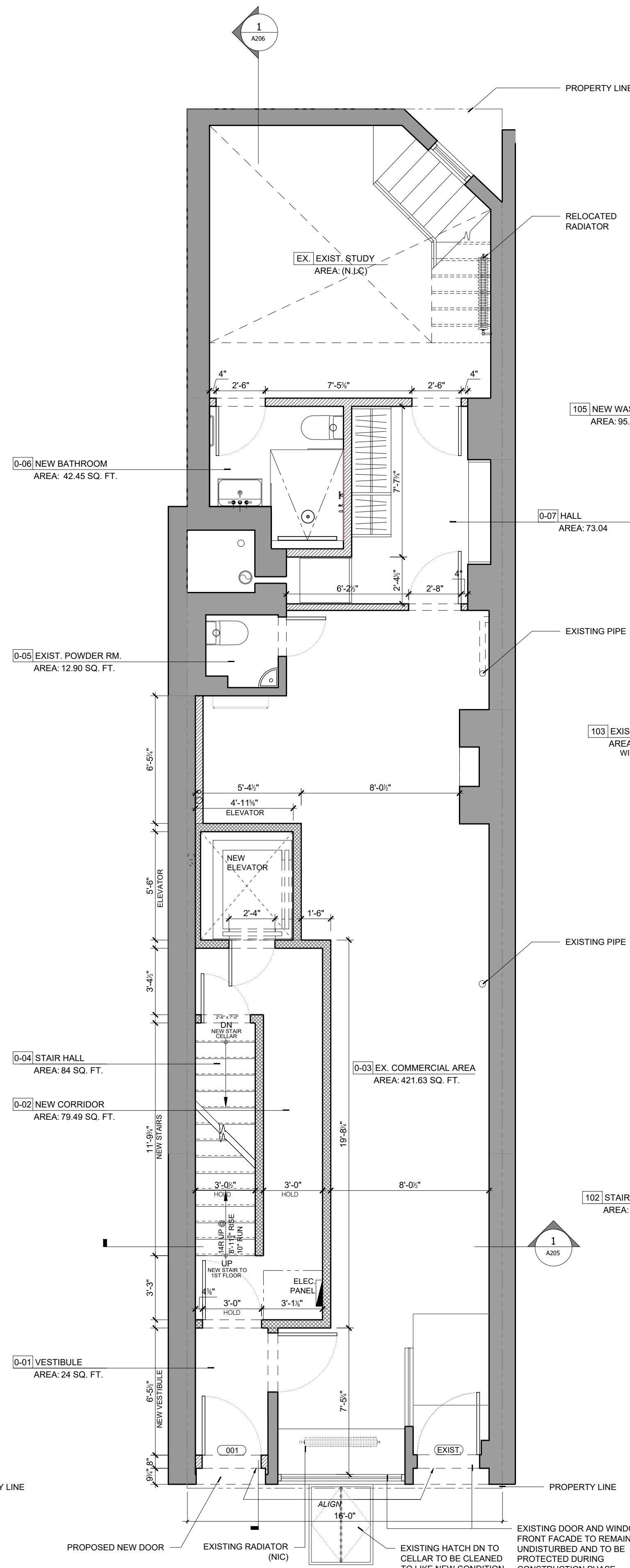
PROPOSED STREET ELEVATION PARK AVENUE



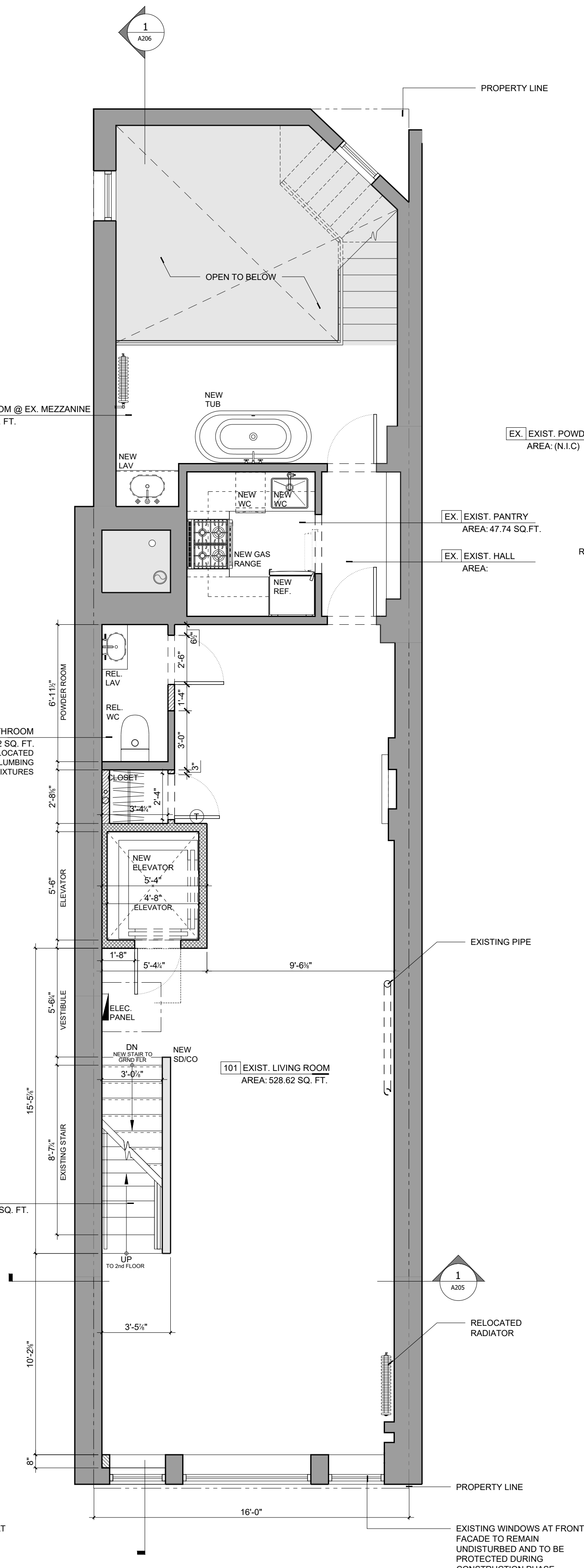
PROPOSED BUILDING SECTION



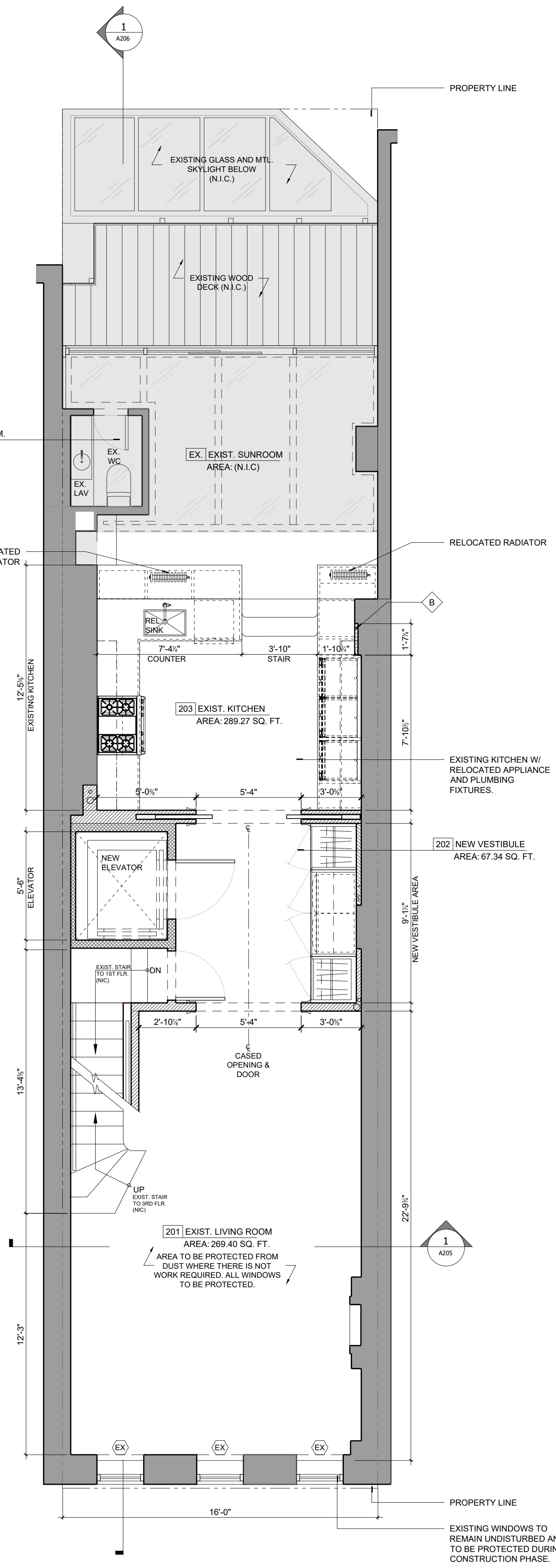
01 PLAN - CELLAR LEVEL
1/4" = 1'-0"



02 PLAN - BASEMENT LEVEL
1/4" = 1'-0"



03 PLAN - 1st FLOOR RESIDENTIAL
1/4" = 1'-0"



04 PLAN - 2nd FLOOR
1/4" = 1'-0"

PROPOSED PLANS

