

SITE LOCATION

CENTRAL PARK WEST AT 79TH STREET TRANSVERSE



HISTORIC HOUSE TRUST OF NYC
IN PARTNERSHIP WITH NYC PARKS

PROPOSAL FOR METAL RAILINGS & FLAG POLES

JULY 2024

SWEDISH COTTAGE MARIONETTE THEATRE

CENTRAL PARK



EXISTING: MAIN ENTRANCE MODIFIED FOR ADA COMPLIANCE 1990



HISTORIC MAIN ENTRANCE: PHOTO FROM 1876 EXPOSITION IN PHILADELPHIA

NORTH FACADE



HISTORIC HOUSE TRUST OF NYC
IN PARTNERSHIP WITH NYC PARKS

PROPOSAL FOR METAL RAILINGS
JULY 2024

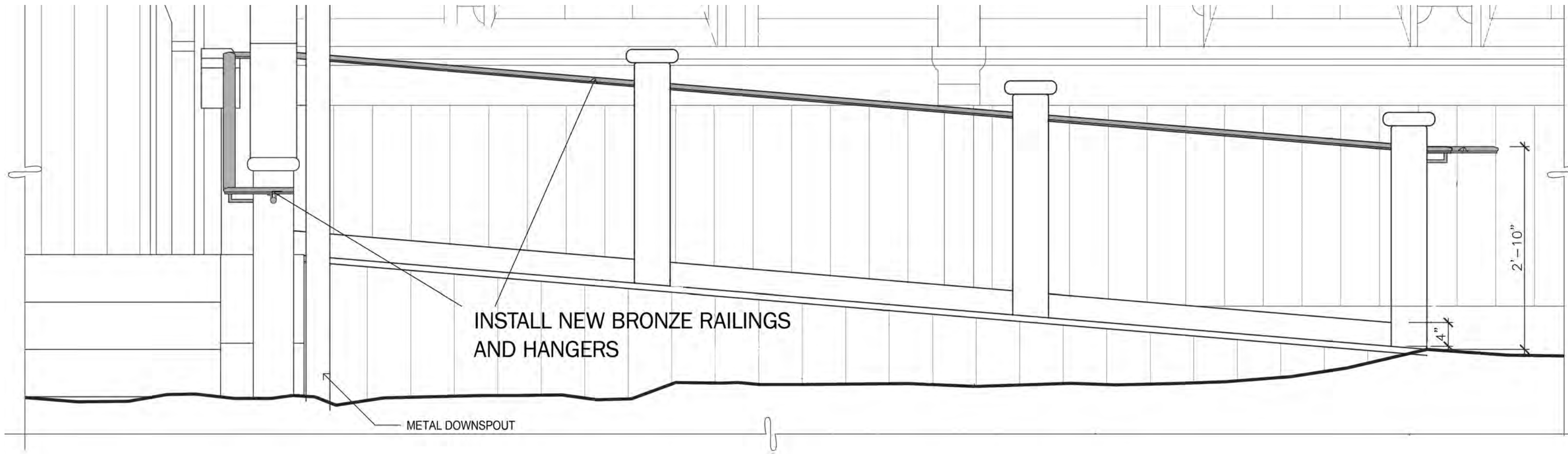
SWEDISH COTTAGE MARIONETTE THEATRE
CENTRAL PARK



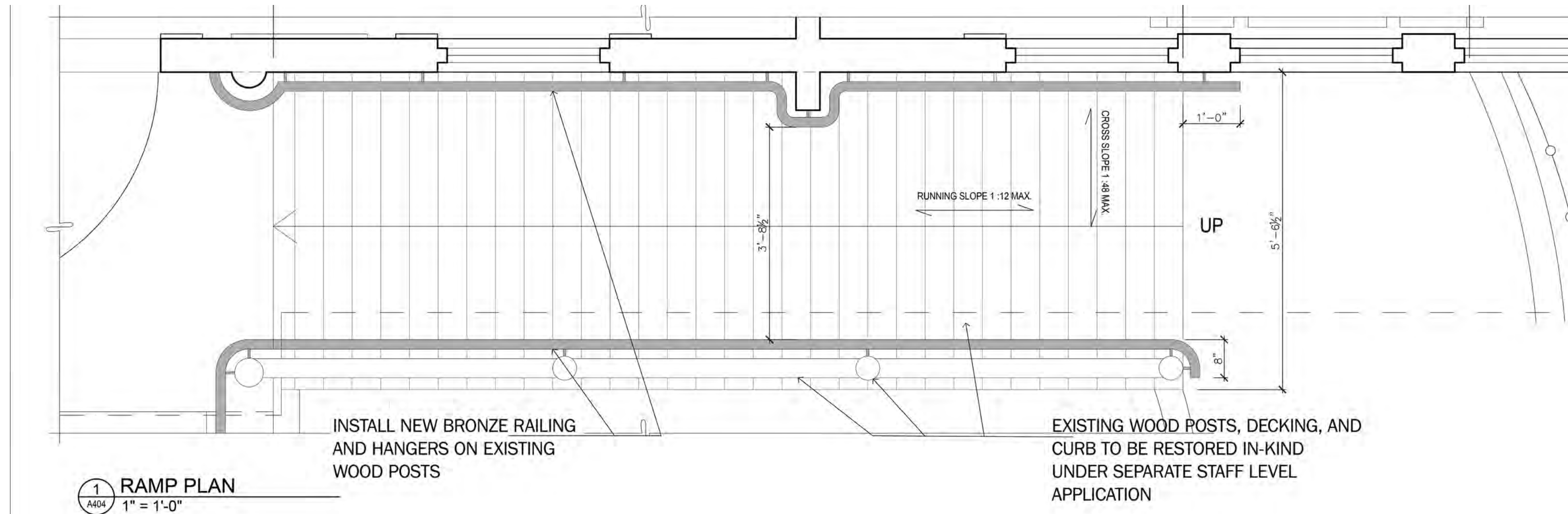
NORTH FACADE - EXISTING CONDITION DETAILS

PROPOSAL FOR METAL RAILINGS

JULY 2024

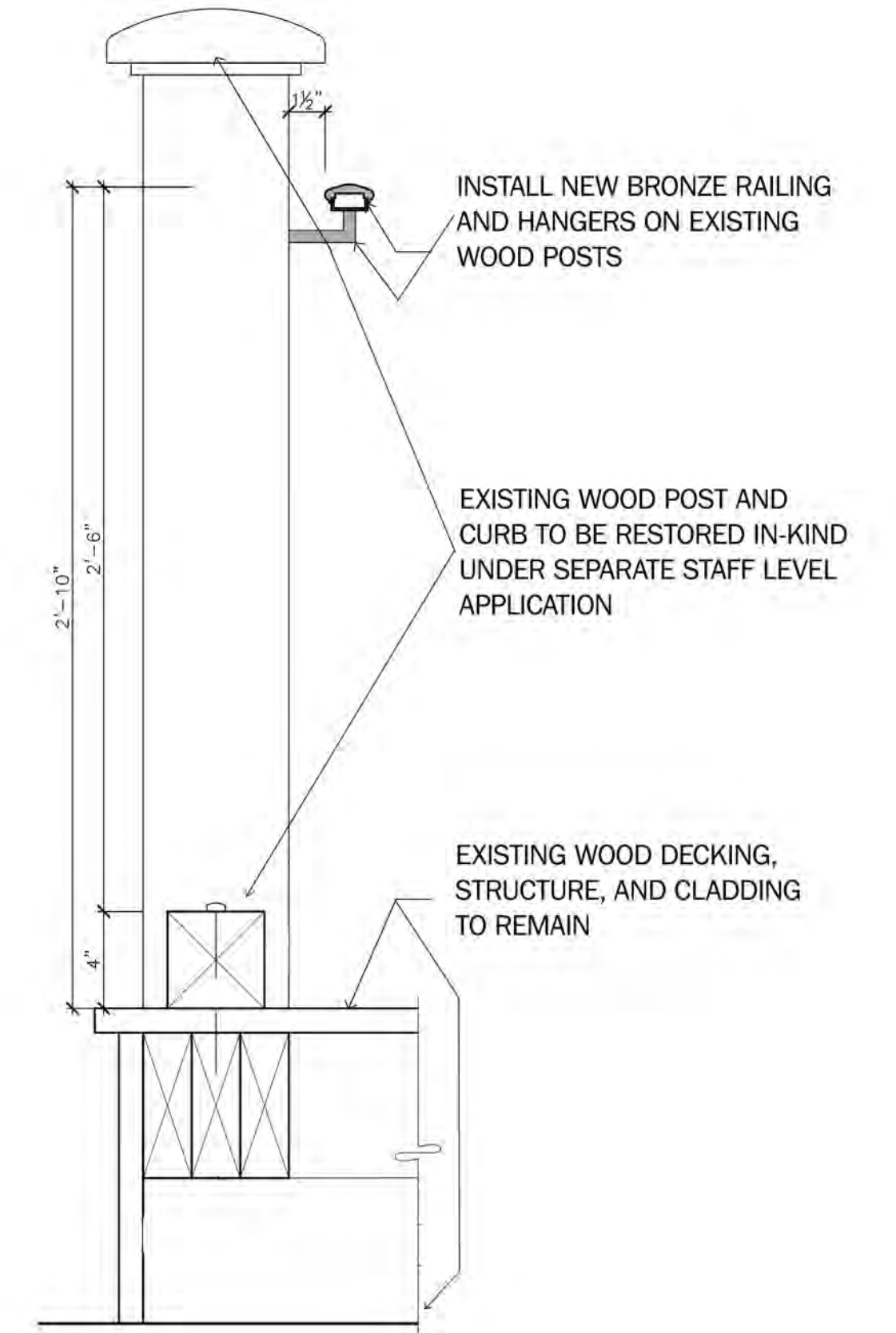


2 RAMP ELEVATION
A404 1" = 1'-0"



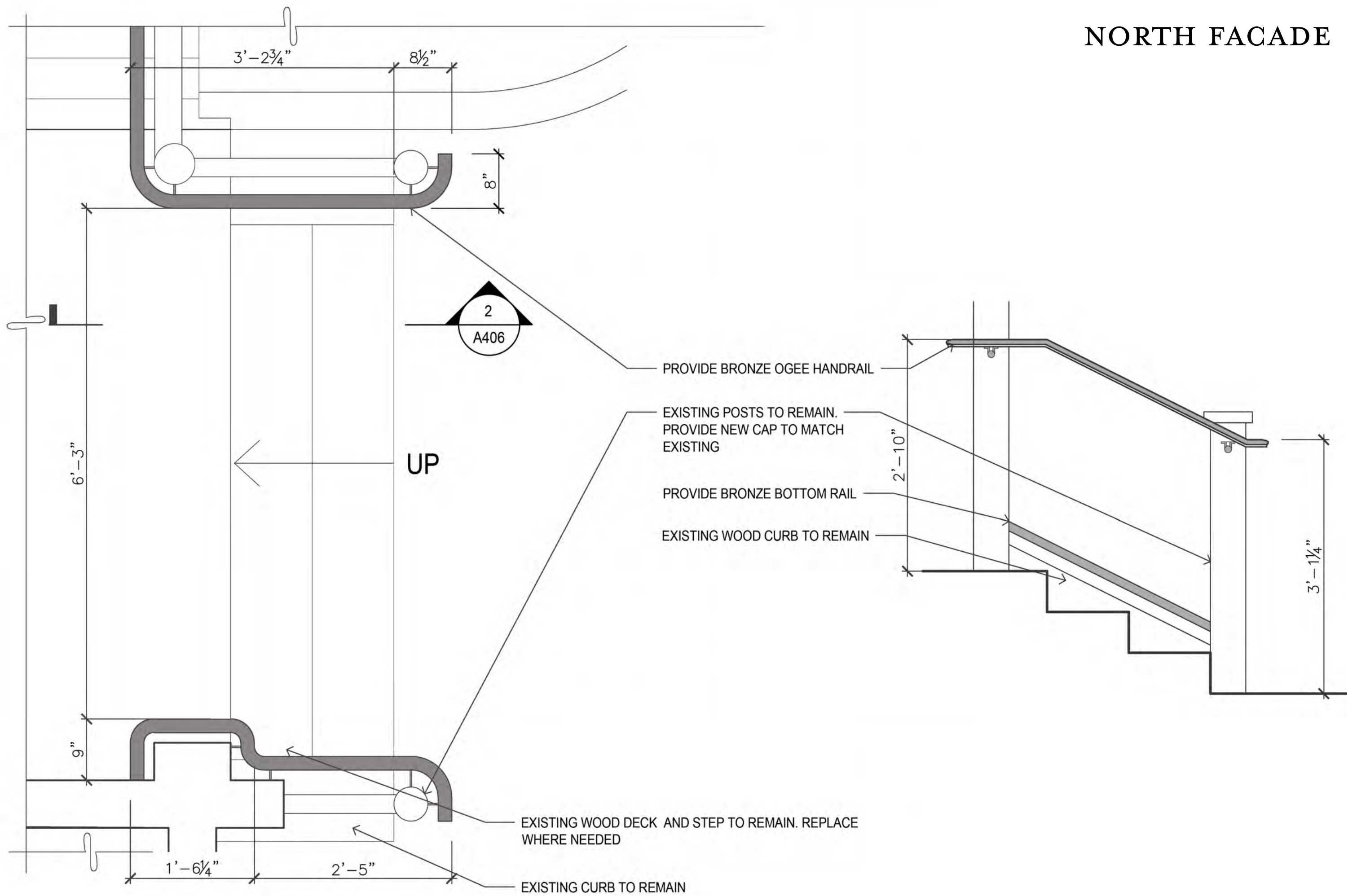
1 RAMP PLAN
A404 1" = 1'-0"

PROPOSED AT EXISTING RAMP NORTH FACADE



3 RAMP SECTION
A404

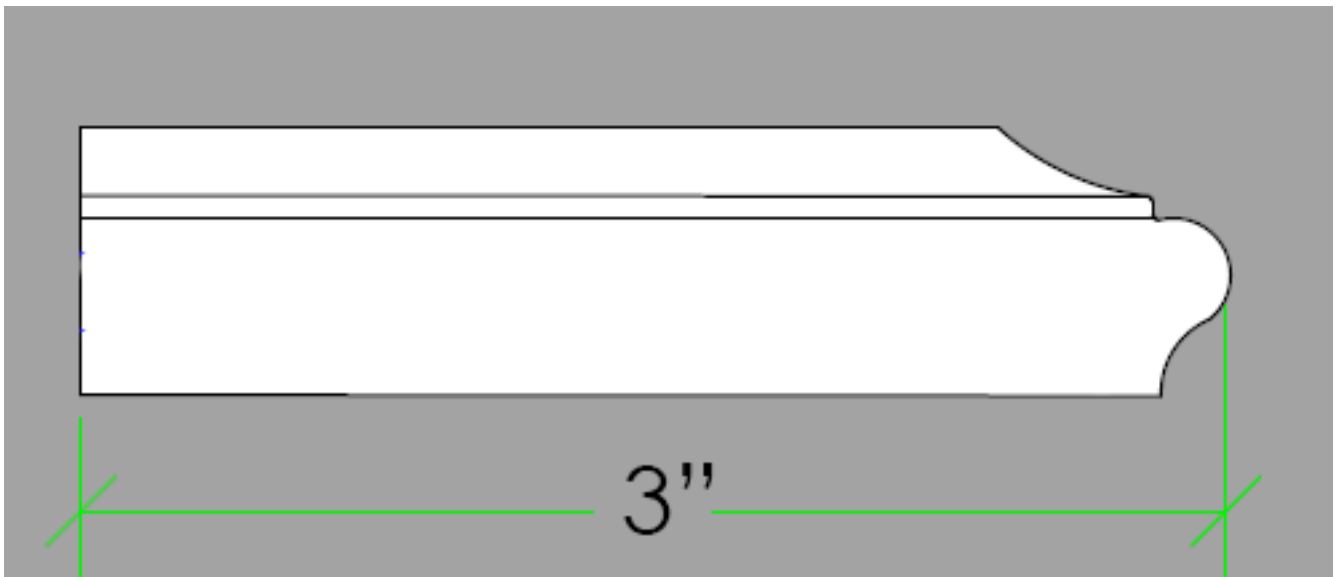
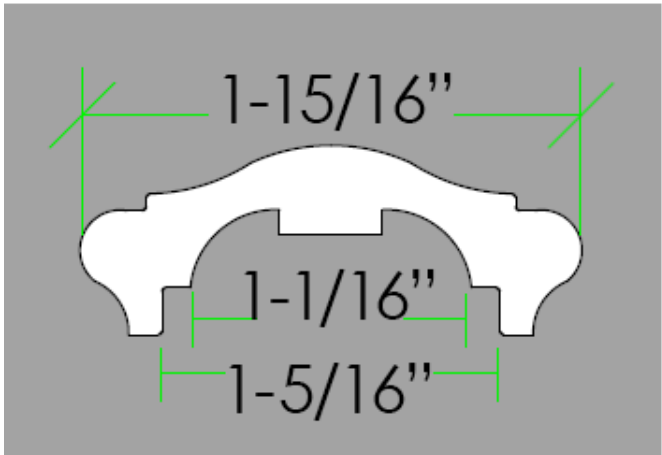
PROPOSED AT EXISTING STAIR
NORTH FACADE



1 NORTH STAIR FLOOR PLAN
A406 1" = 1'-0"

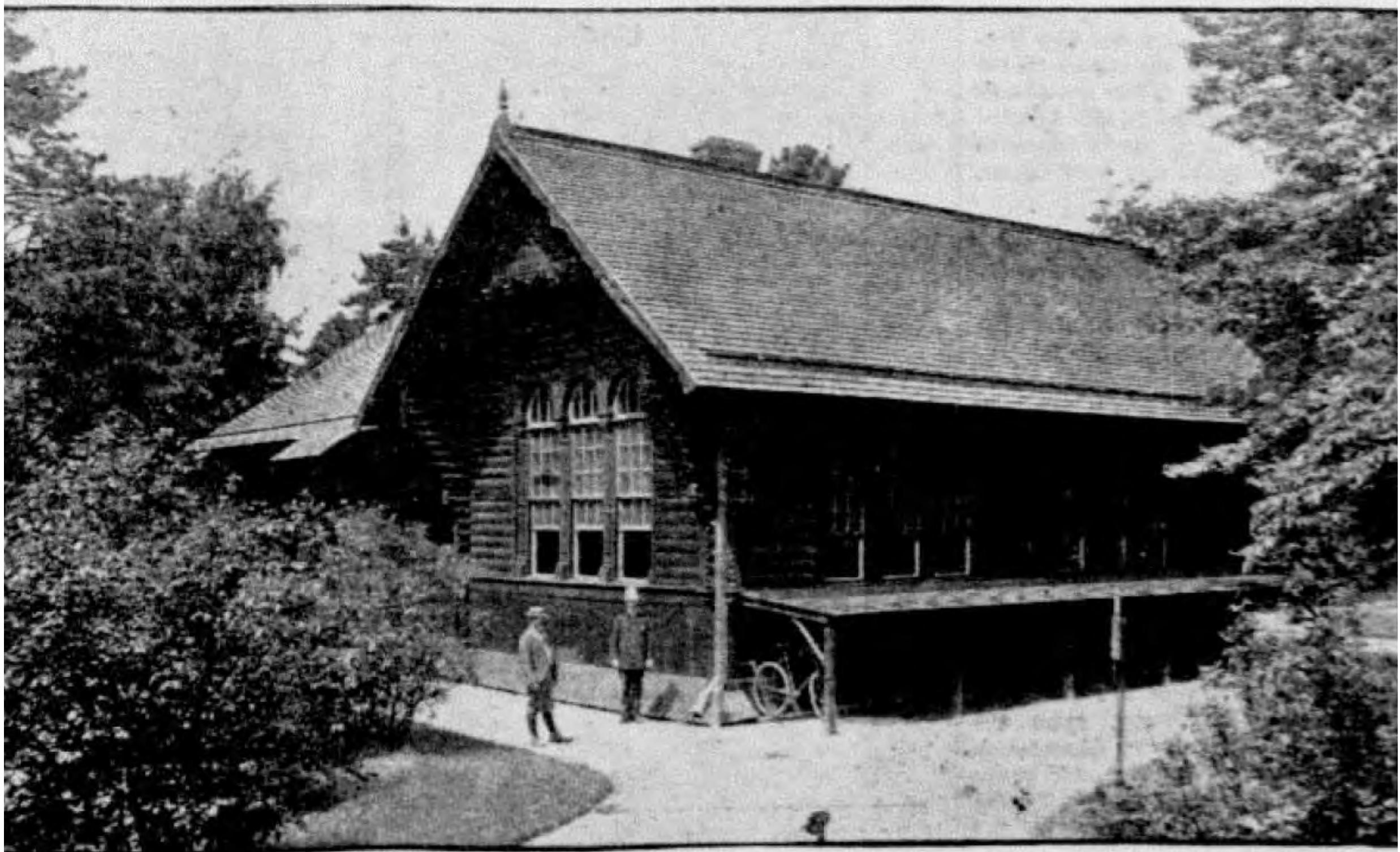
2 NORTH STAIR SECTION
A406 1" = 1'-0"

PROPOSED RAILING DETAILS
THROUGHOUT





EXISTING: DOOR ADDED FOR THEATRE EGRESS COMPLIANCE IN 1990



HISTORIC: PHOTO FROM 1901 IN CENTRAL PARK

EAST FACADE



HISTORIC HOUSE TRUST OF NYC
IN PARTNERSHIP WITH NYC PARKS

PROPOSAL FOR METAL RAILINGS
JULY 2024

SWEDISH COTTAGE MARIONETTE THEATRE
CENTRAL PARK



EAST FACADE - EXISTING CONDITION DETAILS

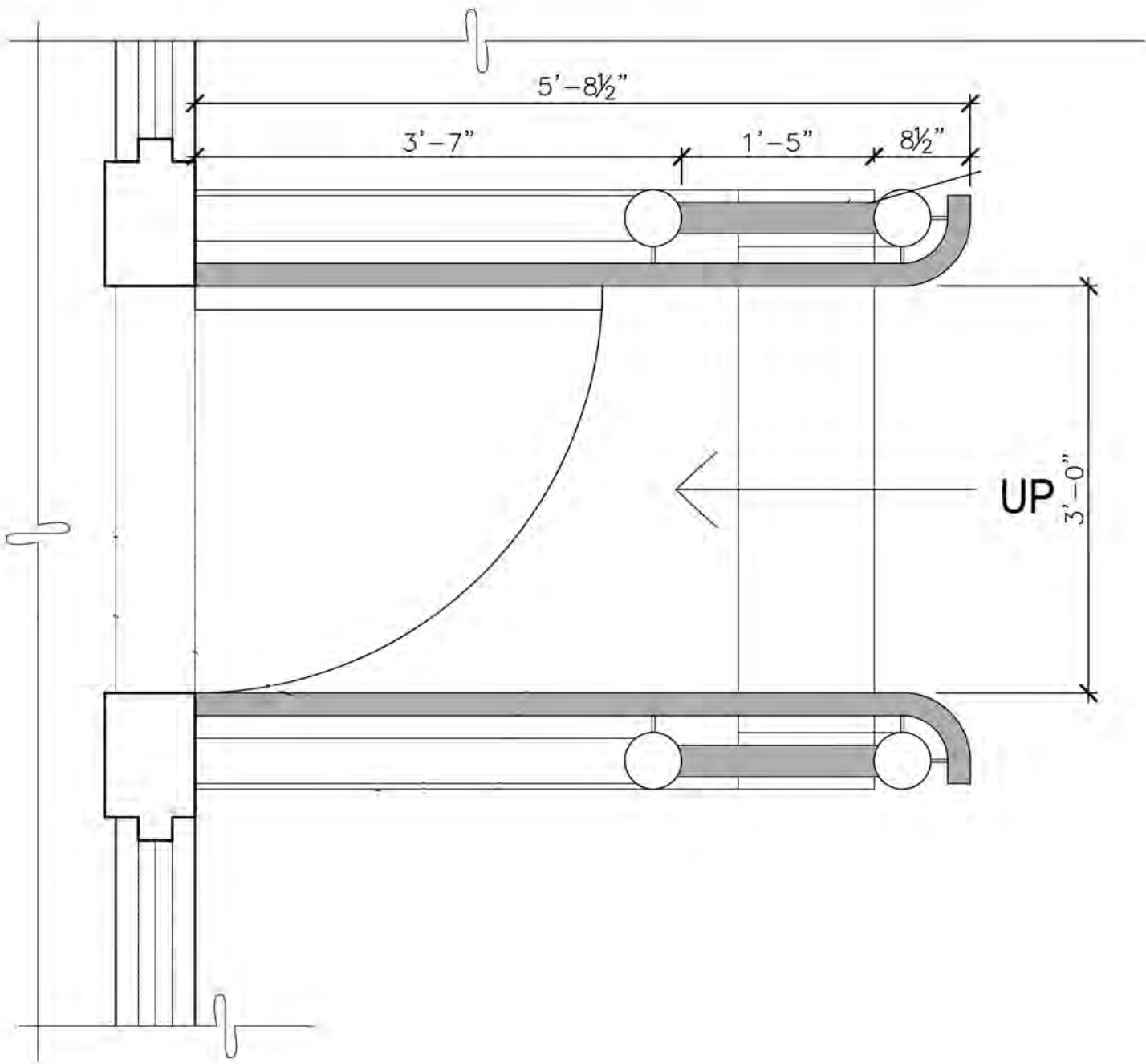


HISTORIC HOUSE TRUST OF NYC
IN PARTNERSHIP WITH NYC PARKS

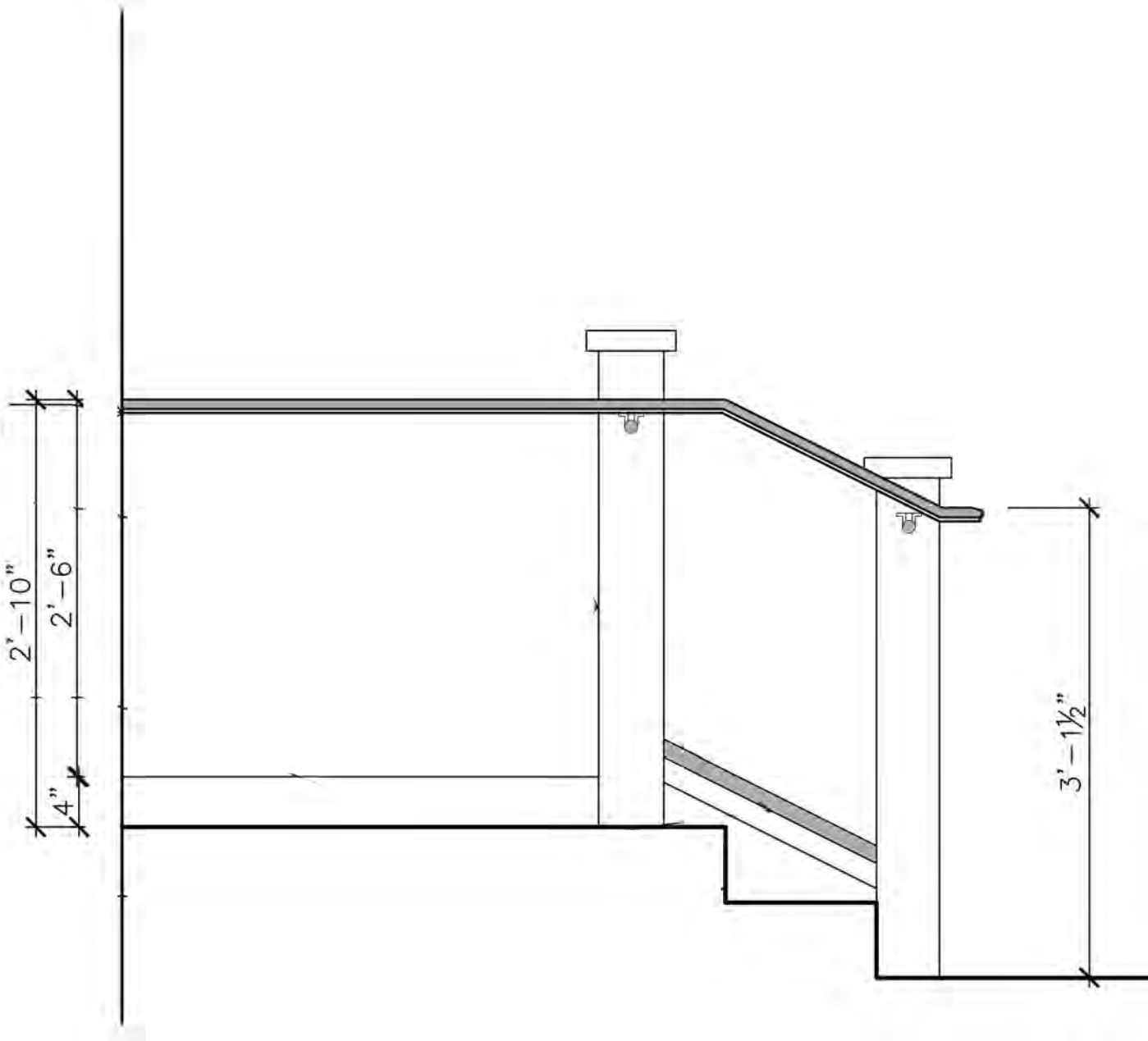
PROPOSAL FOR METAL RAILINGS
JULY 2024

SWEDISH COTTAGE MARIONETTE THEATRE
CENTRAL PARK

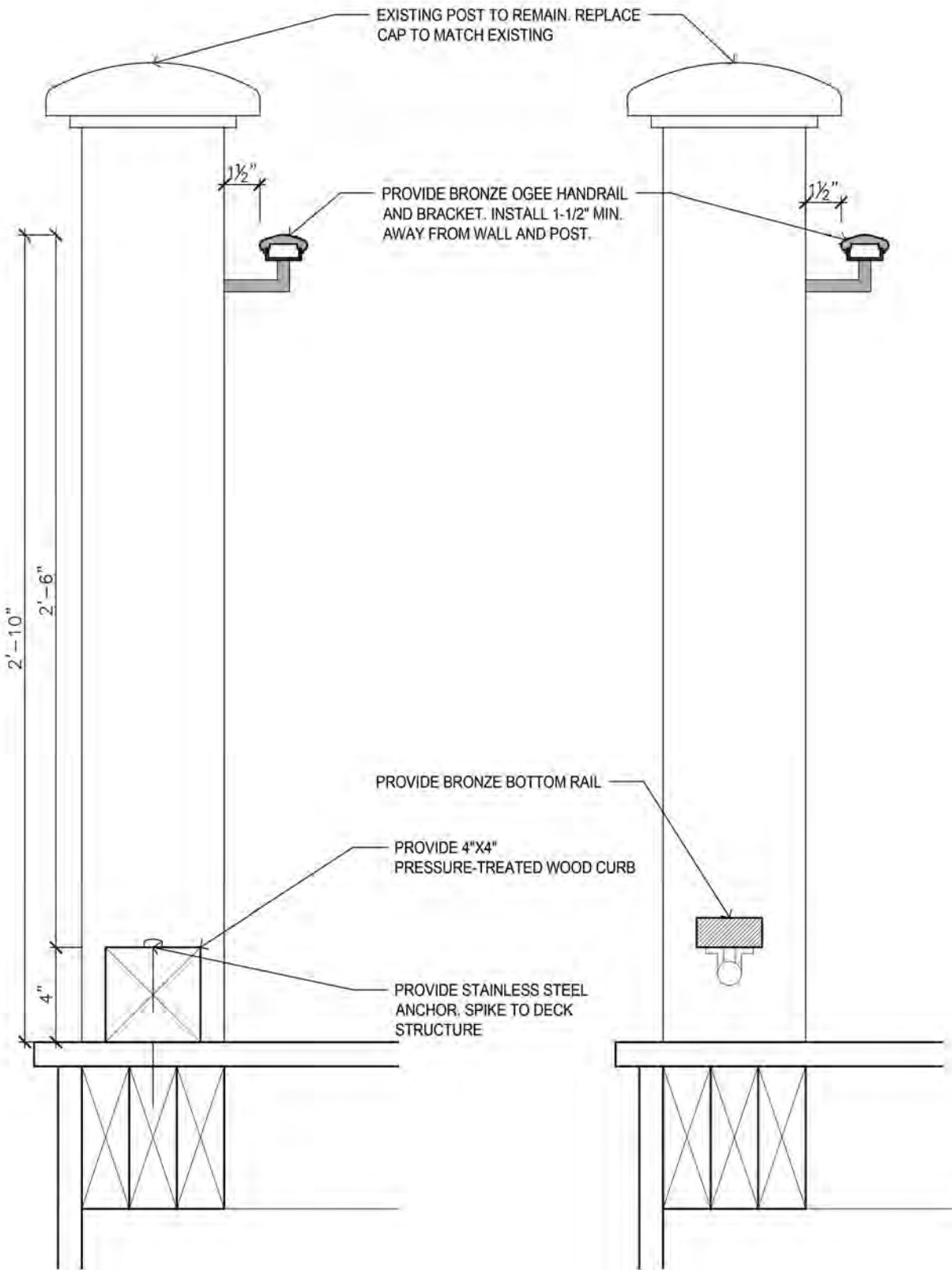
PROPOSED AT EXISTING STAIR
EAST FACADE



3 EAST STAIR FLOOR PLAN
A405 1" = 1'-0"



4 EAST STAIR SECTION
A405 1" = 1'-0"



5 HANDRAIL SECTION AT LANDING 3" = 1'-0"
A405
6 HANDRAIL SECTION AT STAIR 3" = 1'-0"
A405



EXISTING:STAFF ENTRANCE



HISTORIC: 1935

SOUTH FACADE



HISTORIC HOUSE TRUST OF NYC
IN PARTNERSHIP WITH NYC PARKS

PROPOSAL FOR METAL RAILINGS
JULY 2024

SWEDISH COTTAGE MARIONETTE THEATRE
CENTRAL PARK



SOUTH FACADE - EXISTING CONDITION DETAILS

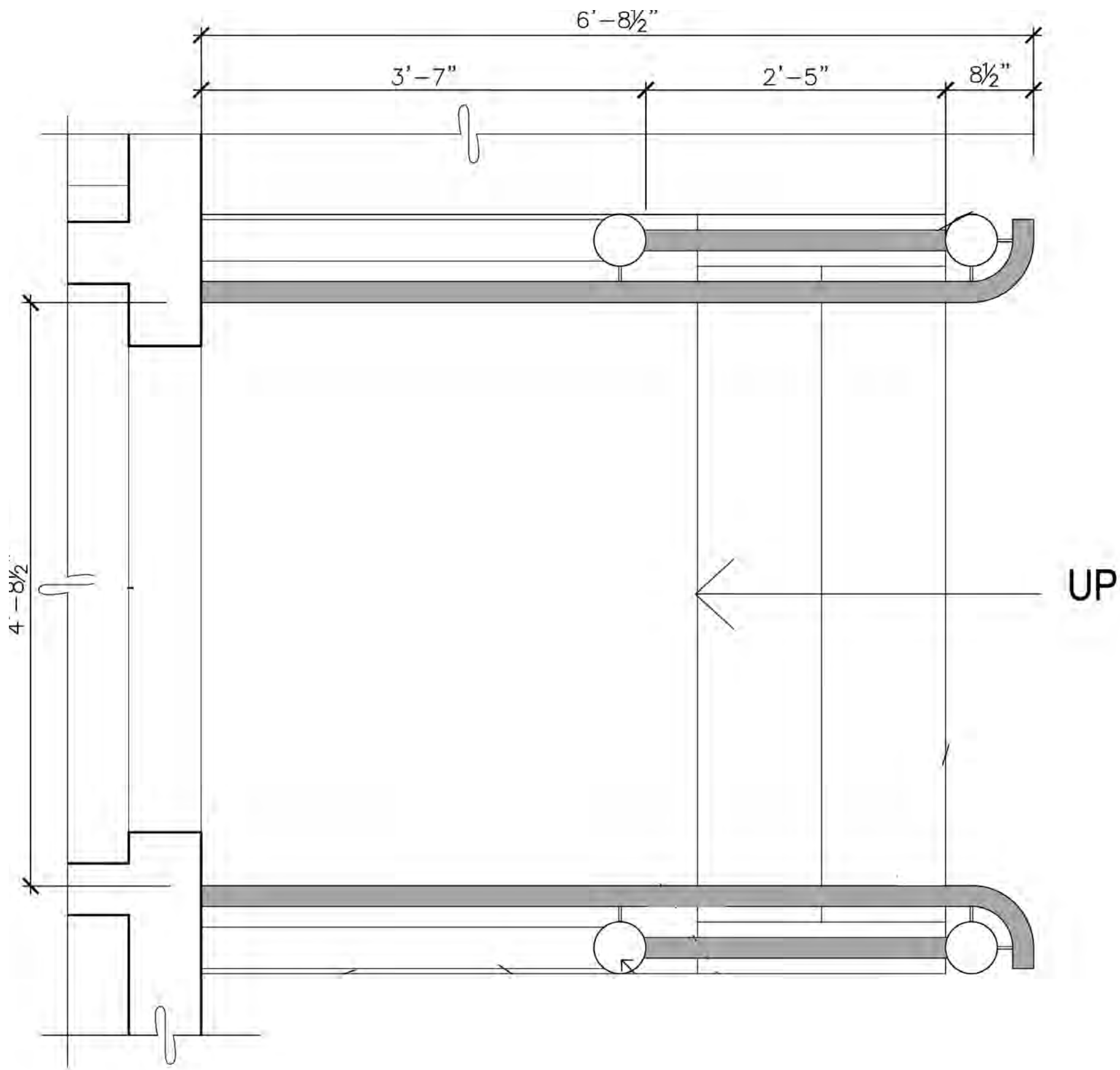


HISTORIC HOUSE TRUST OF NYC
IN PARTNERSHIP WITH NYC PARKS

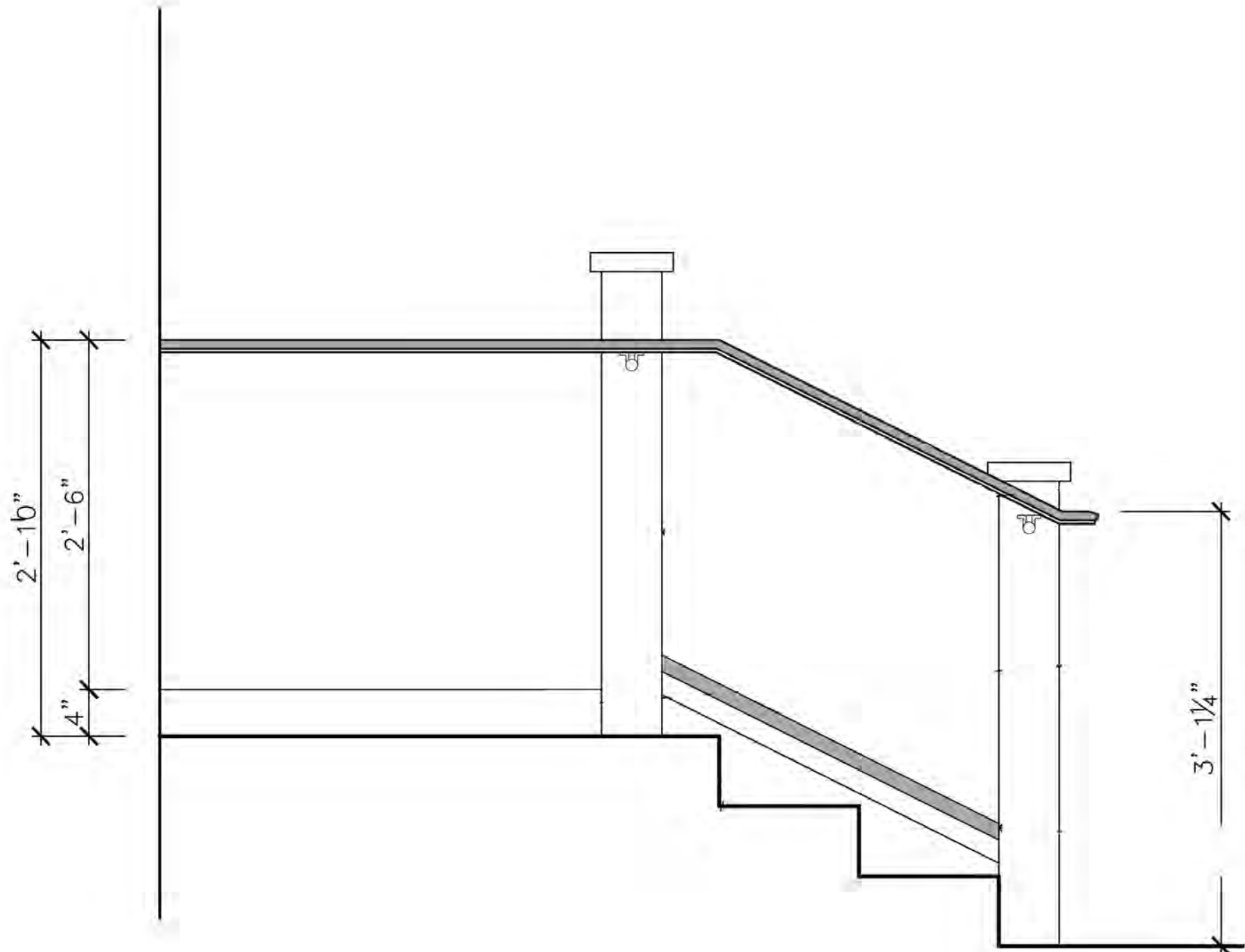
PROPOSAL FOR METAL RAILINGS
JULY 2024

SWEDISH COTTAGE MARIONETTE THEATRE
CENTRAL PARK

PROPOSED AT EXISTING STAIR
SOUTH FACADE



1 SOUTH STAIR FLOOR PLAN
A405 1" = 1'-0"



2 SOUTH STAIR SECTION
A405 1" = 1'-0"

- NOTES:
- 1. OGEE BRONZE HANDRAIL INSTALLED AT EXISTING WOOD POSTS WITH NEW BRONZE HANGERS
 - 2. NEW WOOD CURB INSTALLED AT STAIR LANDING
 - 3. NEW SQUARE PROFILE BOTTOM RAIL INSTALLED AT STAIR RAILING
 - 4. EXISTING STAIRS, LANDING, CLADDING, AND POSTS TO BE RESTORED IN-KIND UNDER SEPARATE APPLICATION



1876



1901



1986-2016



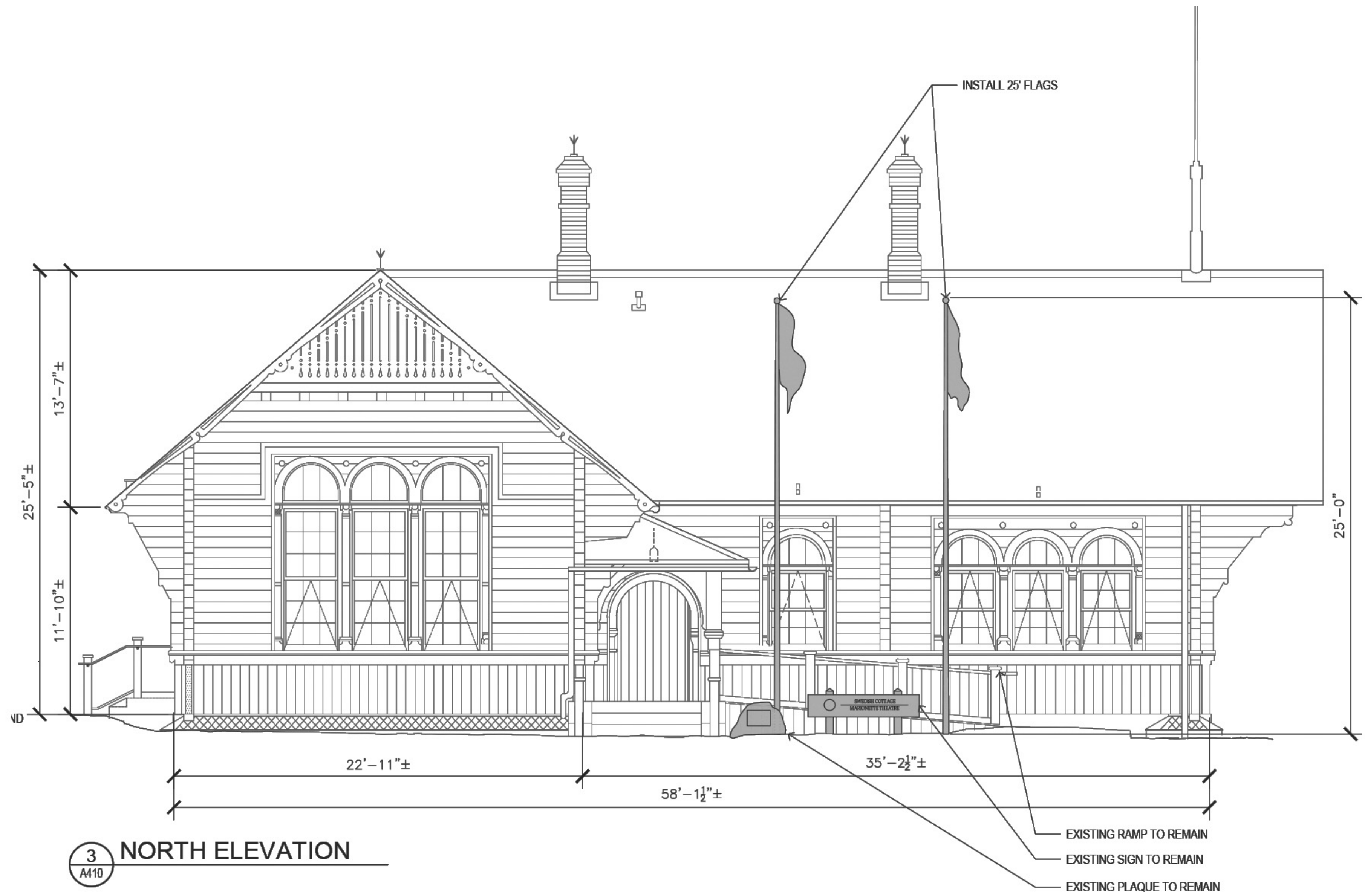
2018-

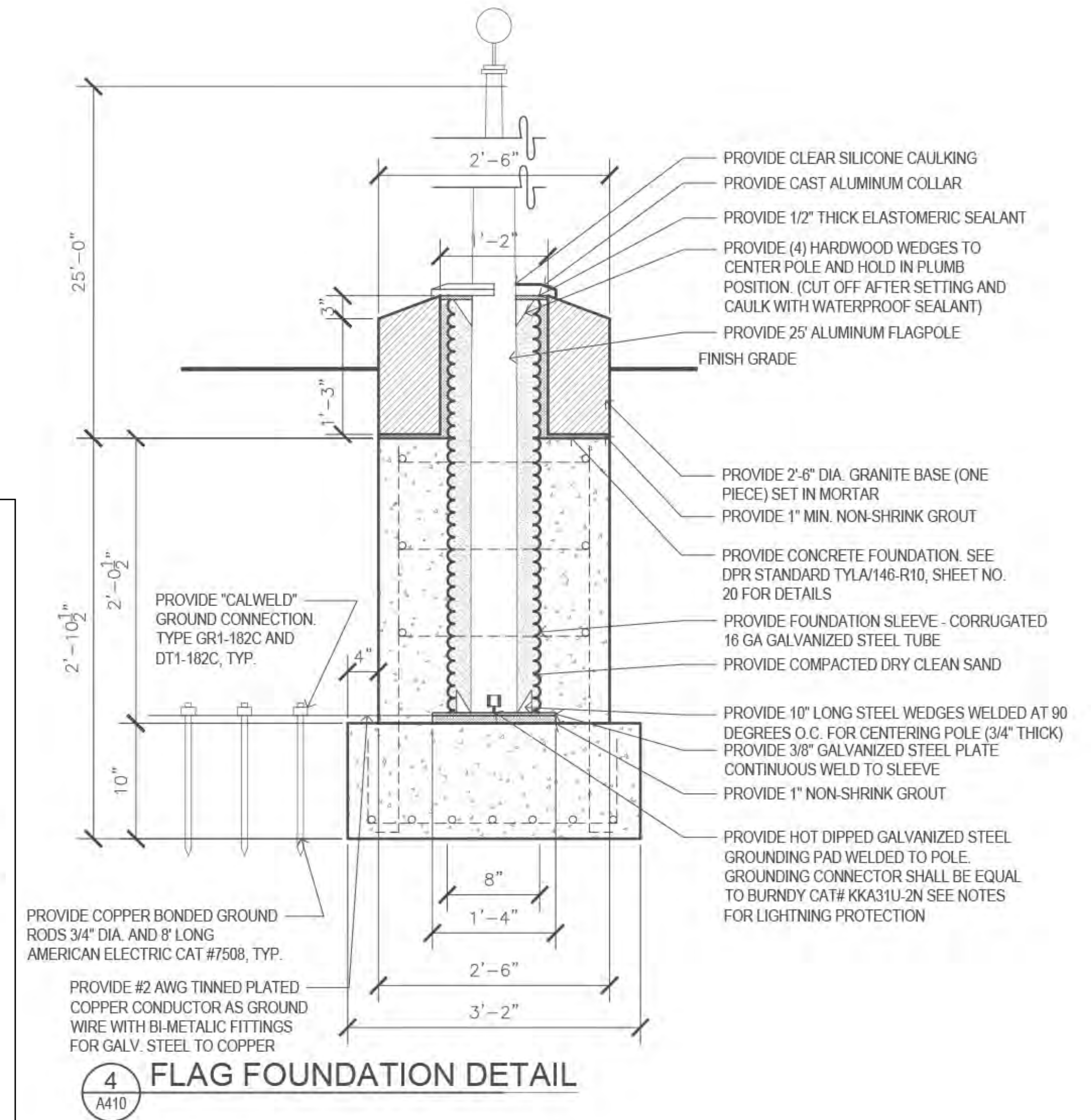
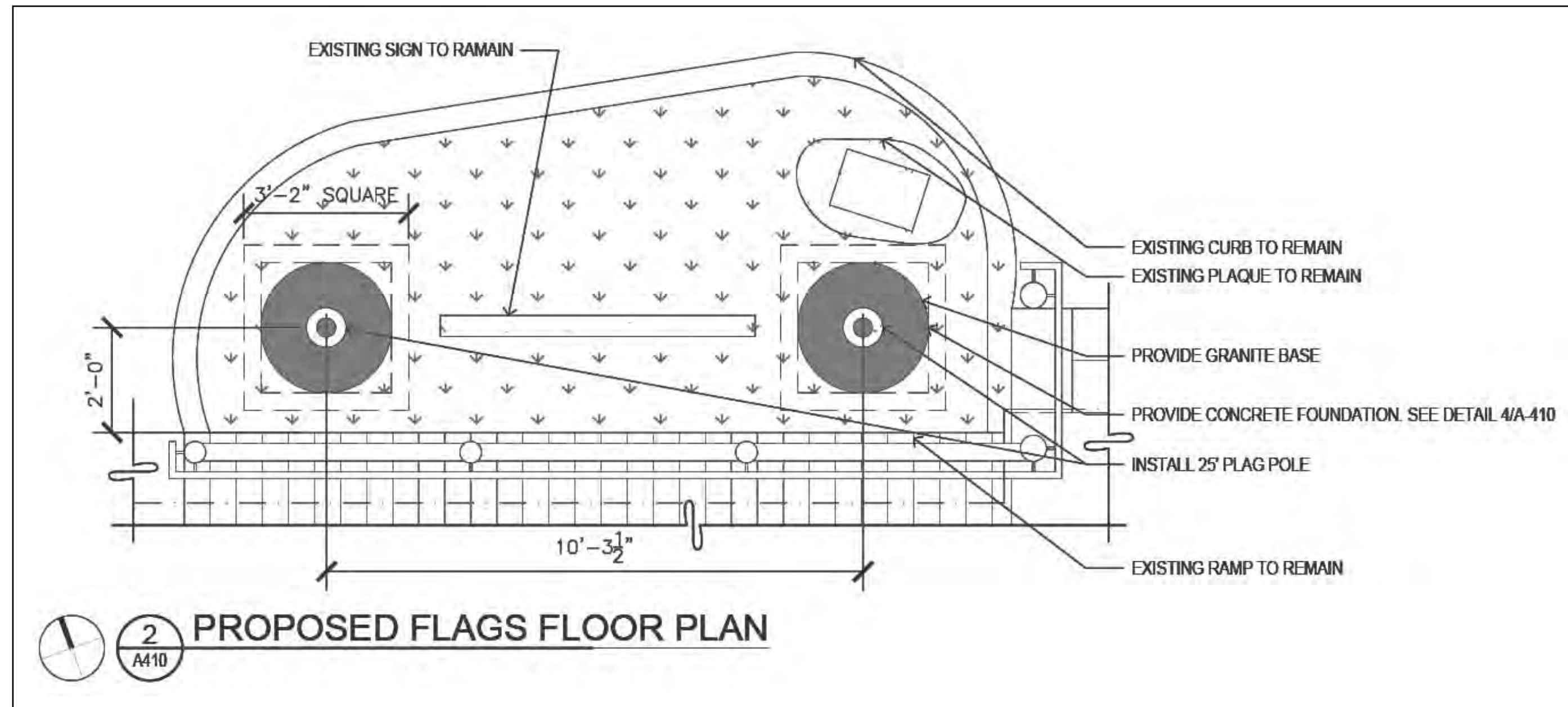
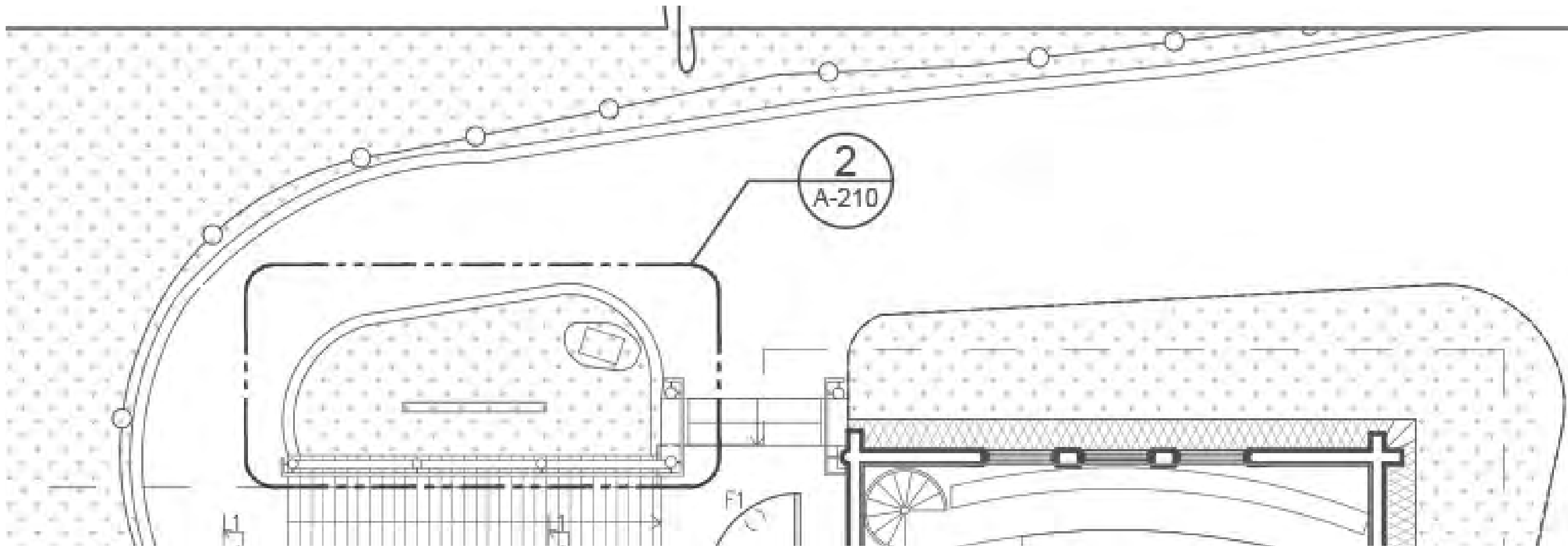


HISTORIC HOUSE TRUST OF NYC
IN PARTNERSHIP WITH NYC PARKS

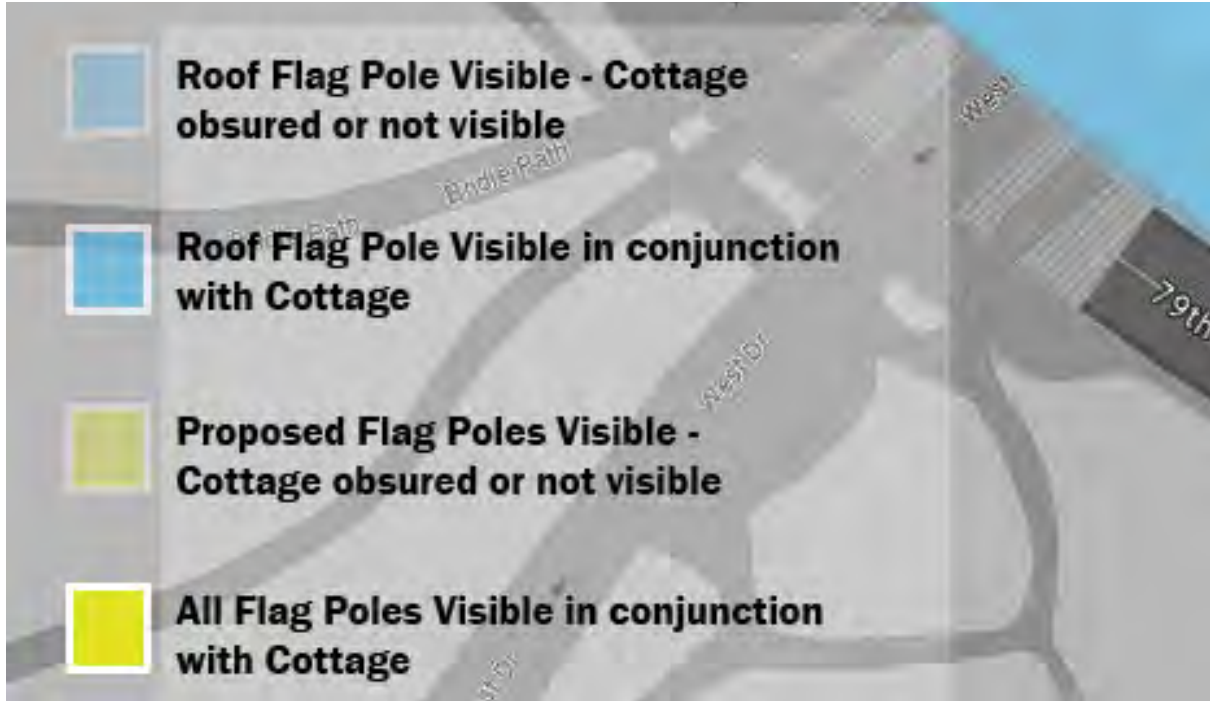
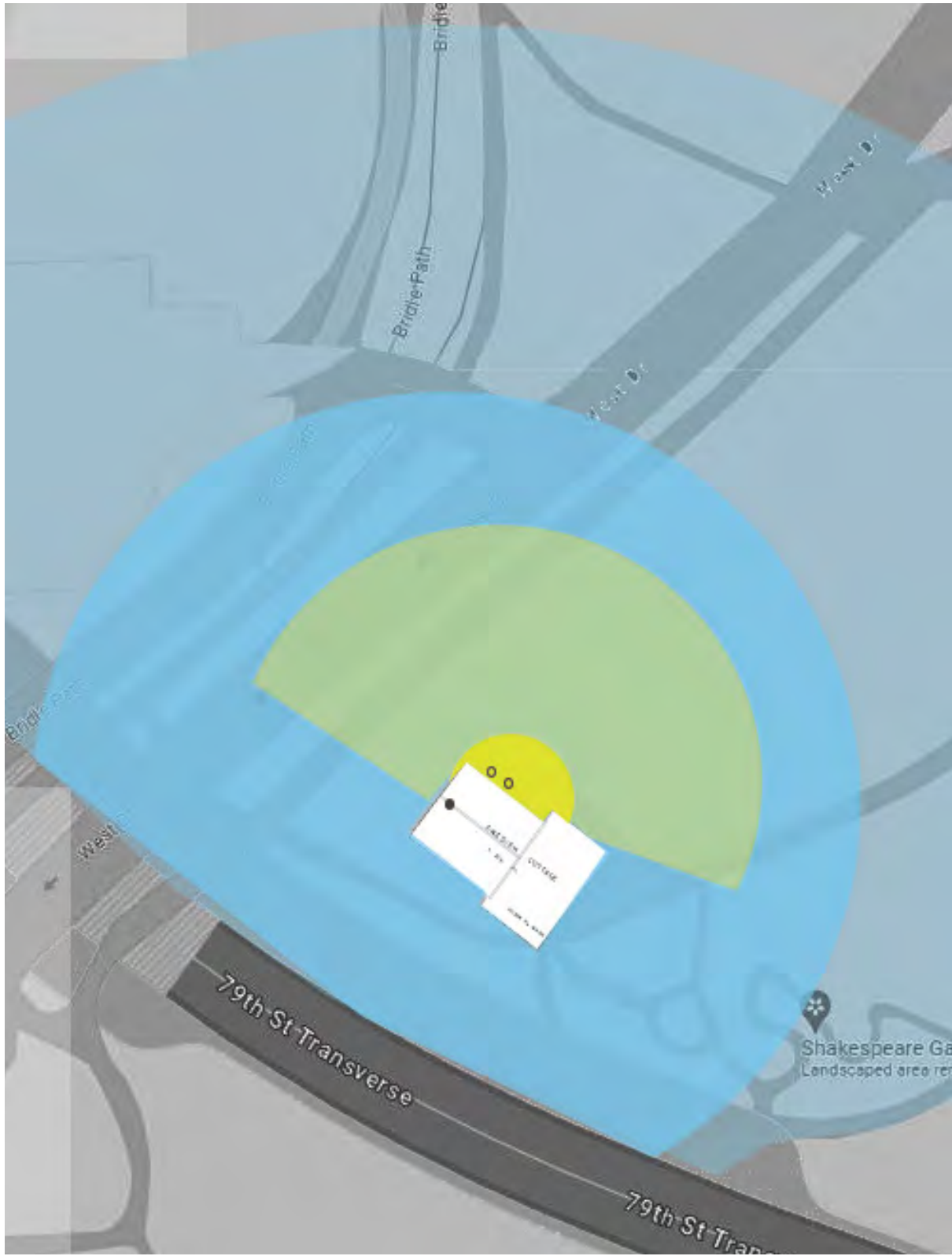
PROPOSAL FOR FLAG POLES
JULY 2024

SWEDISH COTTAGE MARIONETTE THEATRE
CENTRAL PARK









HISTORIC HOUSE TRUST OF NYC
IN PARTNERSHIP WITH NYC PARKS

PROPOSAL FOR FLAG POLES
JULY 2024

SWEDISH COTTAGE MARIONETTE THEATRE
CENTRAL PARK





HISTORIC HOUSE TRUST OF NYC
IN PARTNERSHIP WITH NYC PARKS

APPENDIX
NORTHEAST ELEVATION

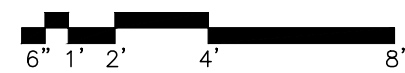
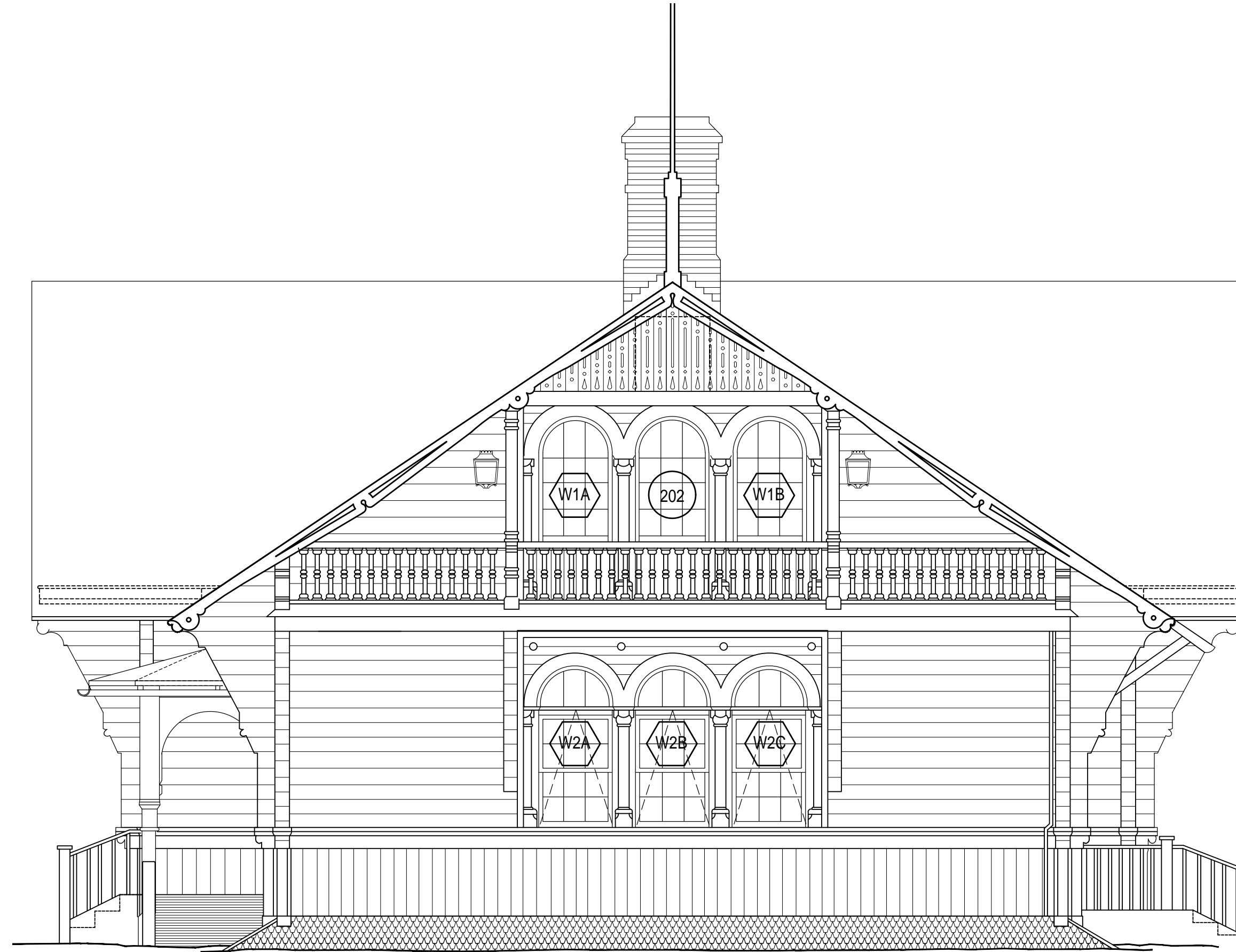
SWEDISH COTTAGE MARIONETTE THEATRE
CENTRAL PARK



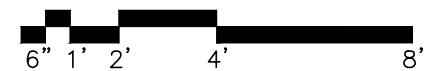
HISTORIC HOUSE TRUST OF NYC
IN PARTNERSHIP WITH NYC PARKS

APPENDIX
SOUTHWEST ELEVATION

SWEDISH COTTAGE MARIONETTE THEATRE
CENTRAL PARK

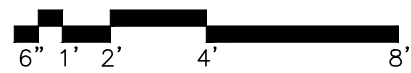
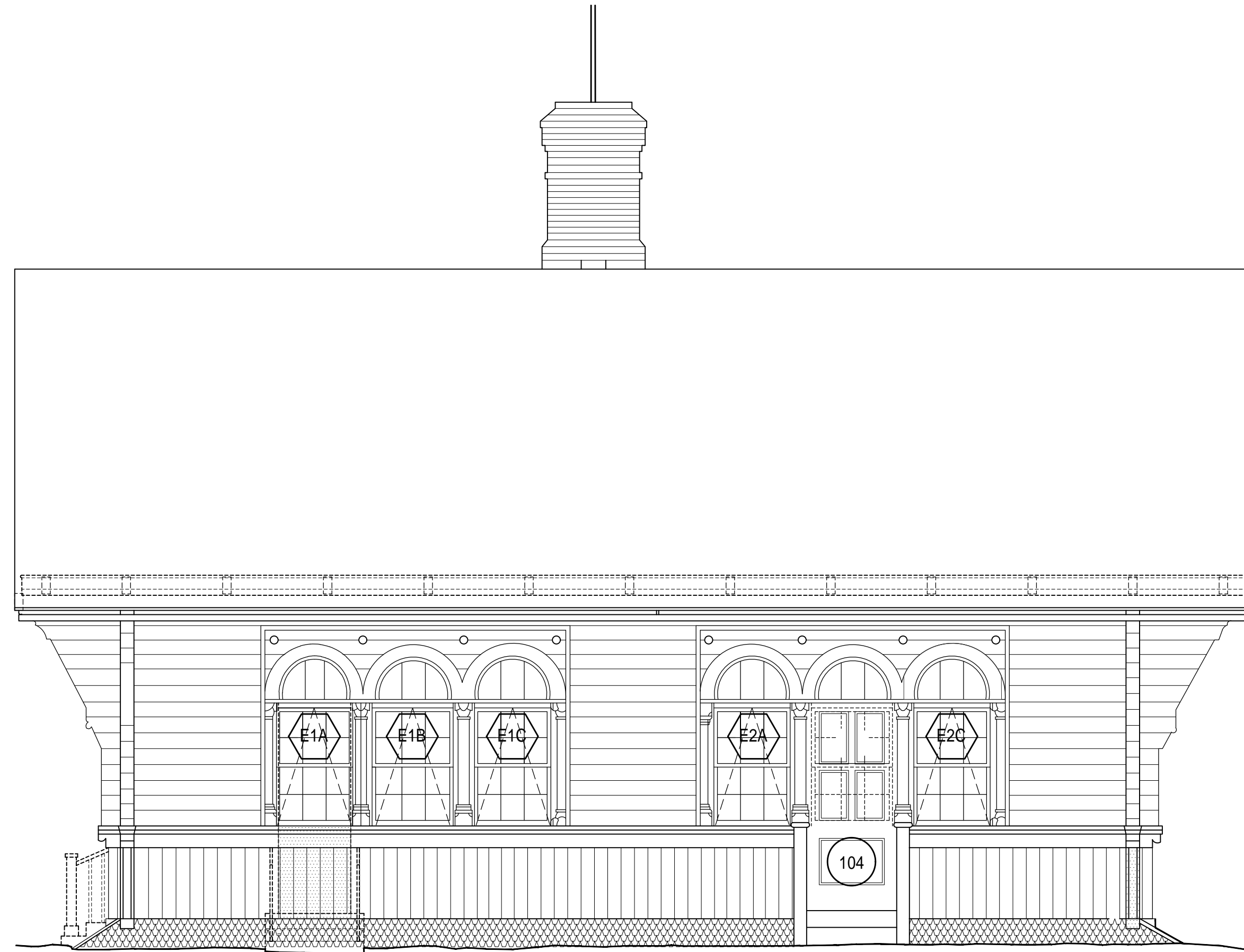


1 WEST ELEVATION
A201 1/4" = 1'-0"

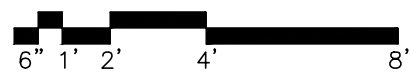


2 SOUTH ELEVATION
A201 1/4" = 1'-0"





1 EAST ELEVATION
A202 1/4" = 1'-0"



2 NORTH ELEVATION
A202 1/4" = 1'-0"

