

Andrew Haswell Green Pile Repairs

Presentation for Manhattan CB8 - Parks Committee

13th June 2024

Project Location



Borough Plan
Scale: NTS



Neighborhood Plan
Scale: NTS



Stantec



Project Location

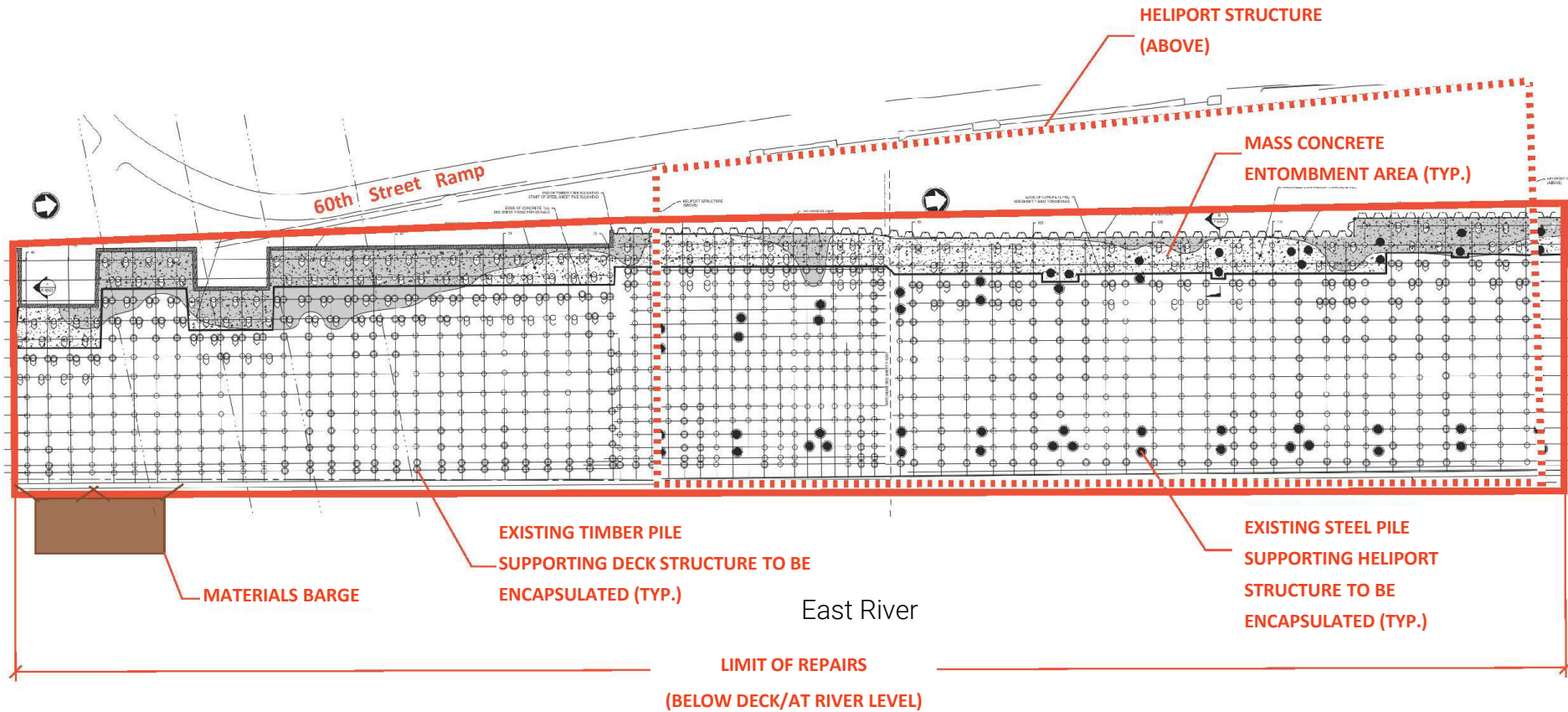
AREA OF WORK (BELOW DECK)
LOOKING SOUTH



AREA OF WORK (BELOW DECK)
LOOKING NORTH

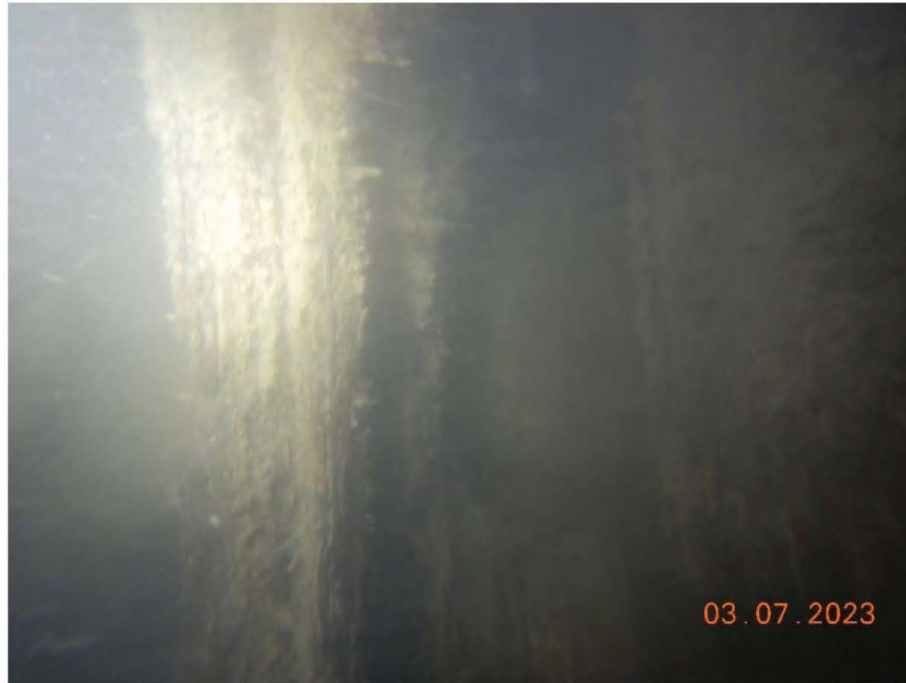


Project scope



Timber and Steel Pipe Deterioration

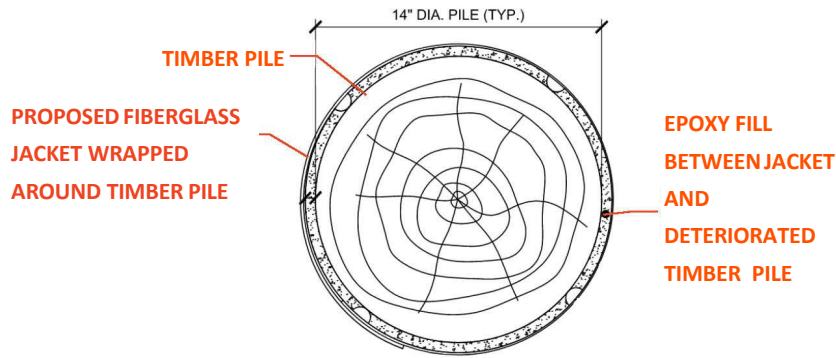
DETERIORATED TIMBER PILE



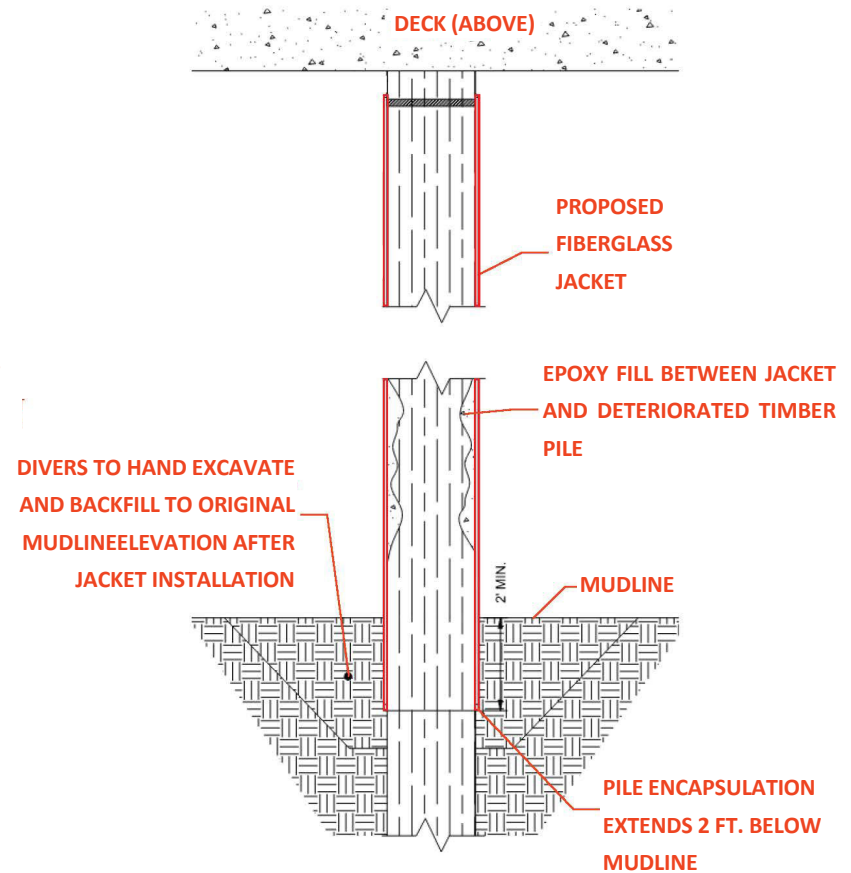
STEEL PIPE PILE CONDITION



Timber Pile Repair Detail

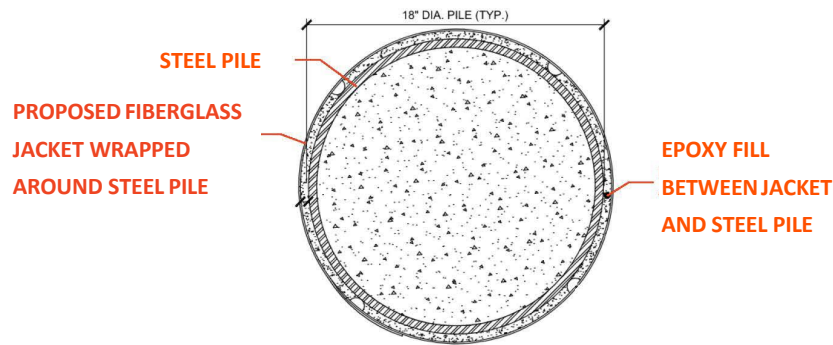


TIMBER PILE REPAIR
PLAN VIEW

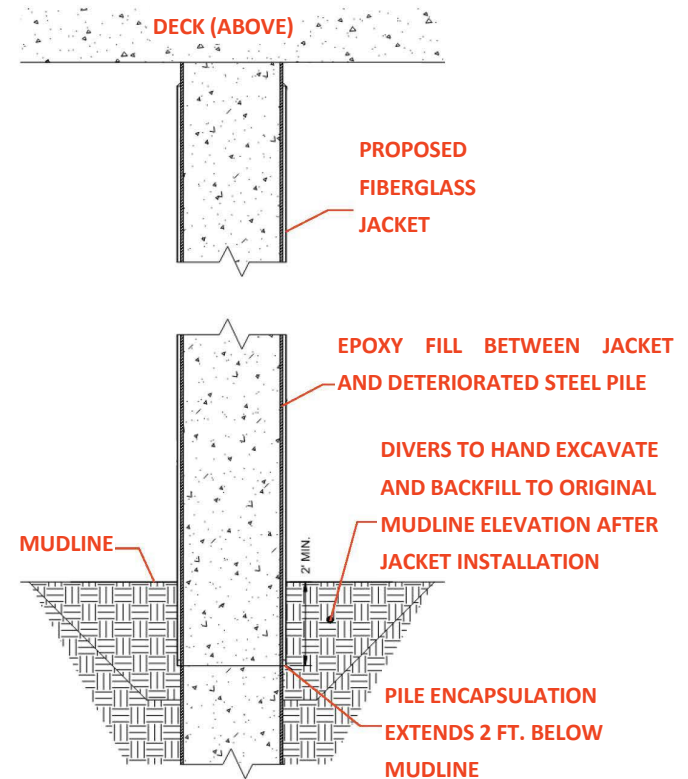


TIMBER PILE REPAIR
ELEVATION VIEW

Steel Pile Repair Detail

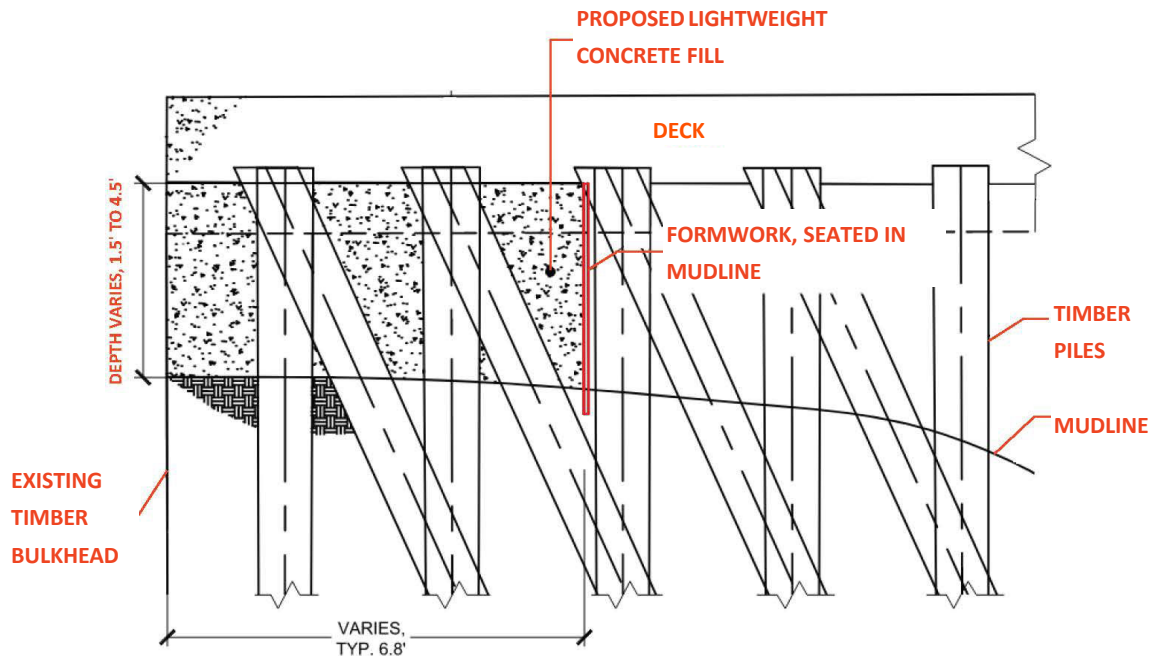


STEEL PILE REPAIR
PLAN VIEW



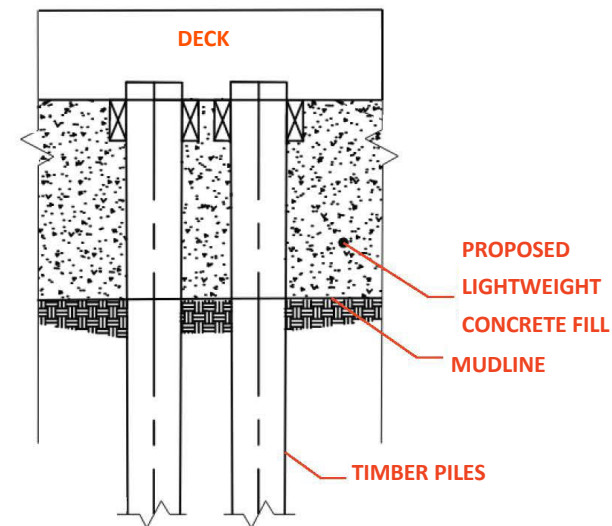
STEEL PILE REPAIR
ELEVATION VIEW

Mass Concrete Entombment Repair Detail



MASS CONCRETE ENTOMBMENT

SECTION VIEW



MASS CONCRETE ENTOMBMENT

ELEVATION VIEW

Project schedule

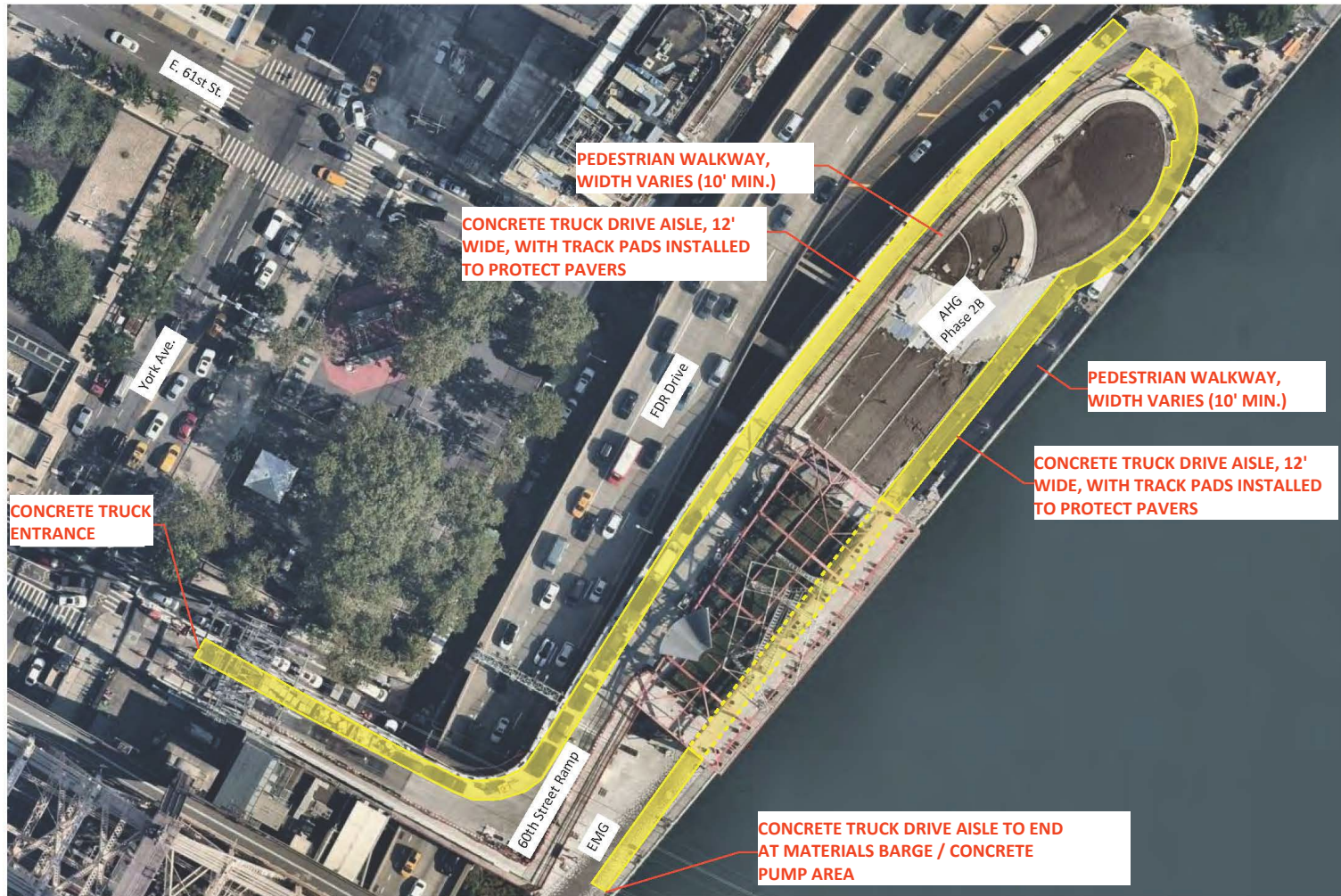
Construction Mobilization – September 2024

Construction Start – October 2024

Construction completion – February 2026

- We are anticipating temporary reduced access (available for use 15' to 10') during construction.
- But do not anticipate full closure of the EMG esplanade or Andrew Haswell Green Park.
- The temp reduced access means that the public's use of the ramp from 60th St. ramp then south below the pavilion will be narrowed to allow concrete trucks, (only for a limited not the entire project duration).

Construction logistics



Questions / Comments