

WALTER B. MELVIN ARCHITECTS, LLC

September 24, 2024

Re: Central Presbyterian Church, 593 Park Avenue, Manhattan  
Proposed Exterior Lighting  
Scope of Work Summary for Community Board 8

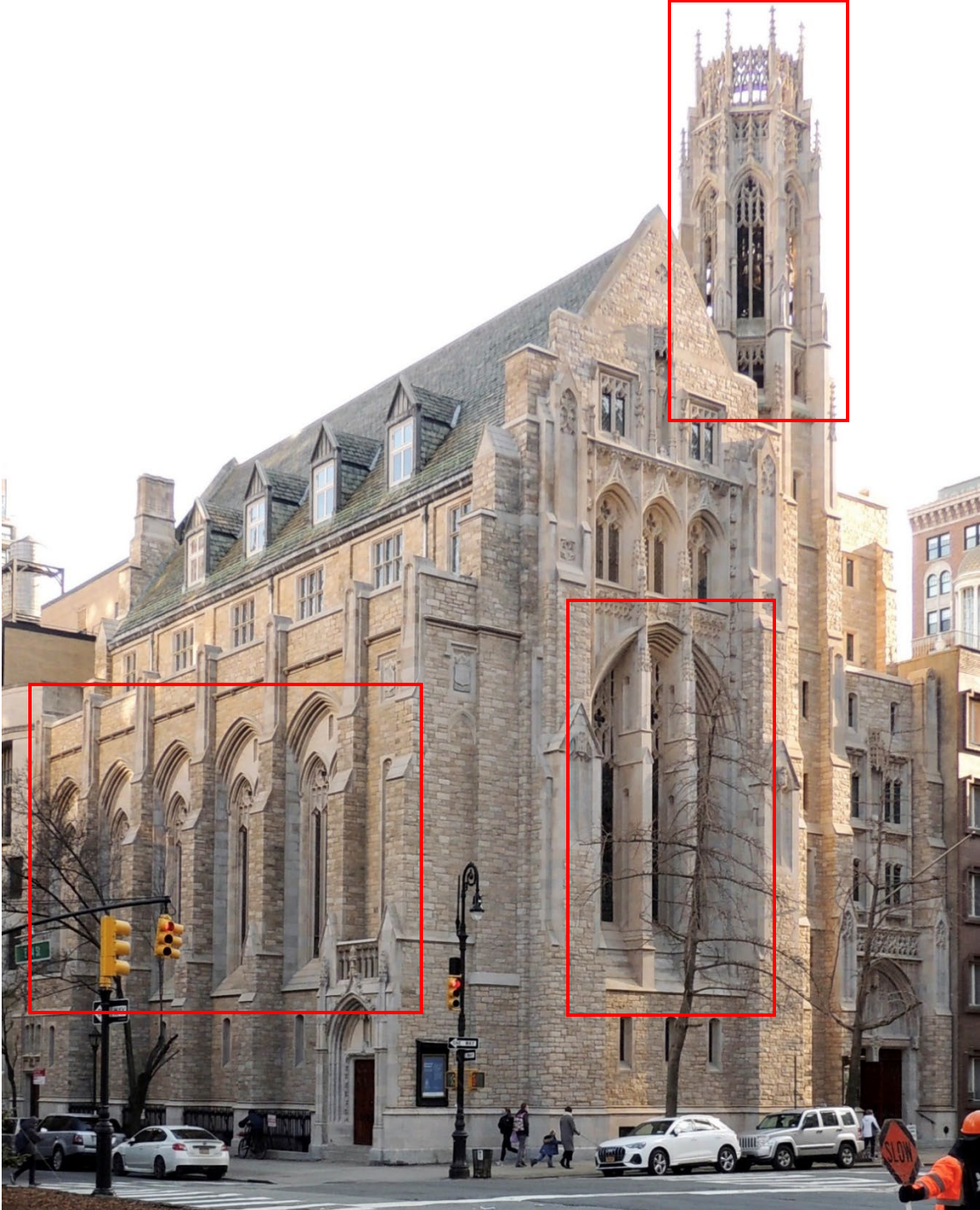


Image 1: Overall view of Central Presbyterian Church at Park Avenue and East 64<sup>th</sup> Street. Proposed lighting scope – LED strip lights at sills, with limestone-colored supports/shields - is limited to the monumental sanctuary windows and belltower.



Image 2: Close-up view of belltower with temporary light fixture mock-up installed at south bay (red arrows), January 2023. Note that final installation with metal (instead of temp. plywood) fixture supports/glare shields would be visually reduced by about half.

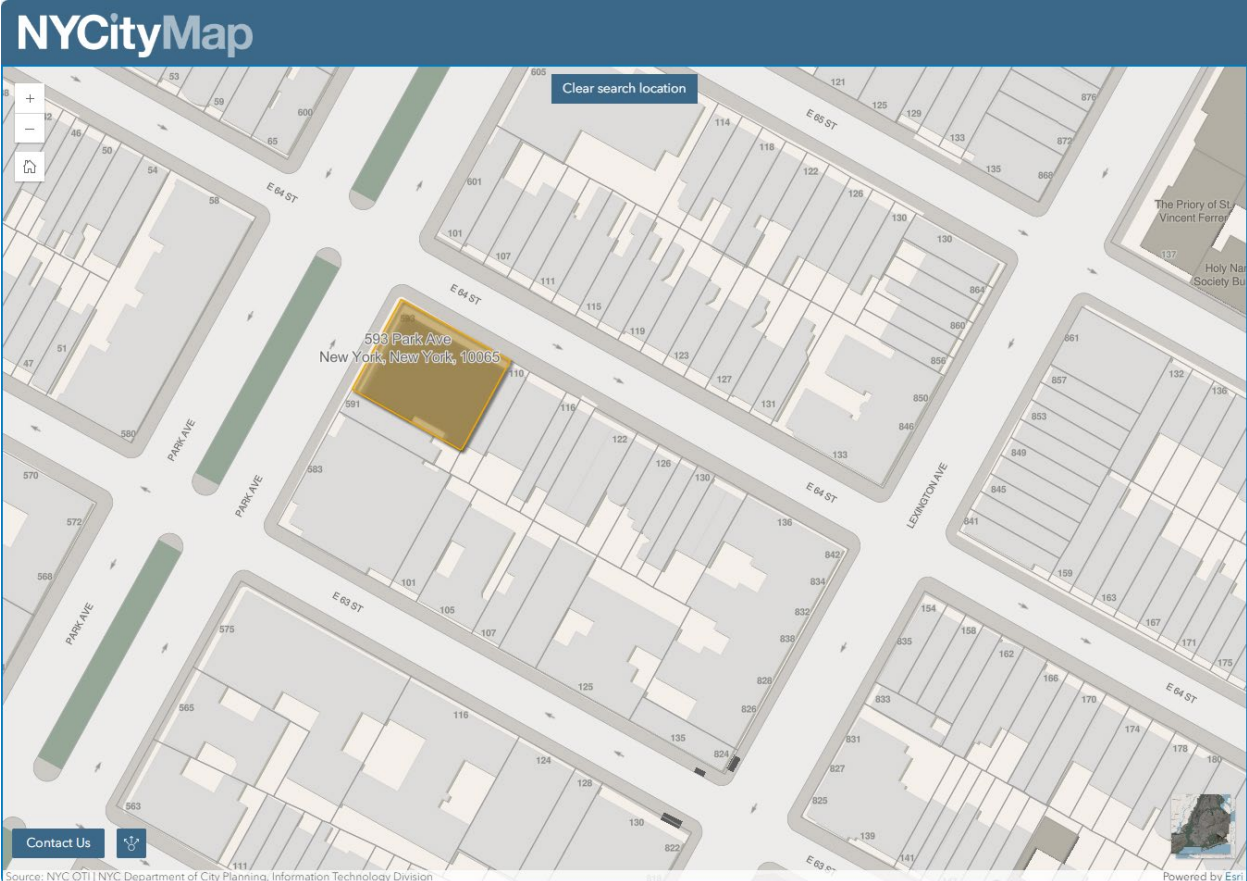


Image 3: Plot plan from NYC CityMap, with church location denoted in yellow.