

FACADE RESTORATION

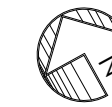
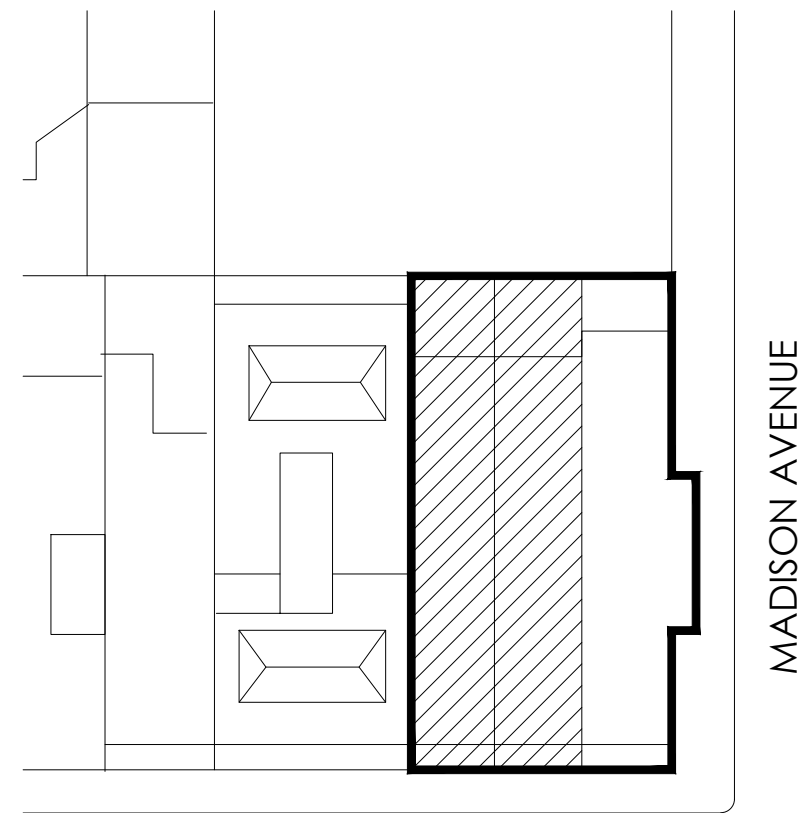
23 EAST 64TH STREET  
25 EAST 64TH STREET



VLARCHITECTS

1115 Broadway, 12<sup>th</sup> Floor  
New York, NY 10010  
T. 212.631.0590 F. 212.631.0591  
VLarchitects@aol.com

KEY PLAN



EAST 64TH STREET

Revisions

05.06.24 FACADE RESTORATION & SIGN OFF ALL OPEN LPC PERMITS

Project  
23E & 25E 64TH STREET  
(AKA 740 MADISON AVENUE)

Title

COVER SHEET

Seal & Signature

Date: MAY 2024

Project No: 1002

Drawing by: LVL, HC

Checked by: LVL

Scale: AS NOTED

DWG No:

T-000

Cad file # 1 of 10  
1002\_740 Madison

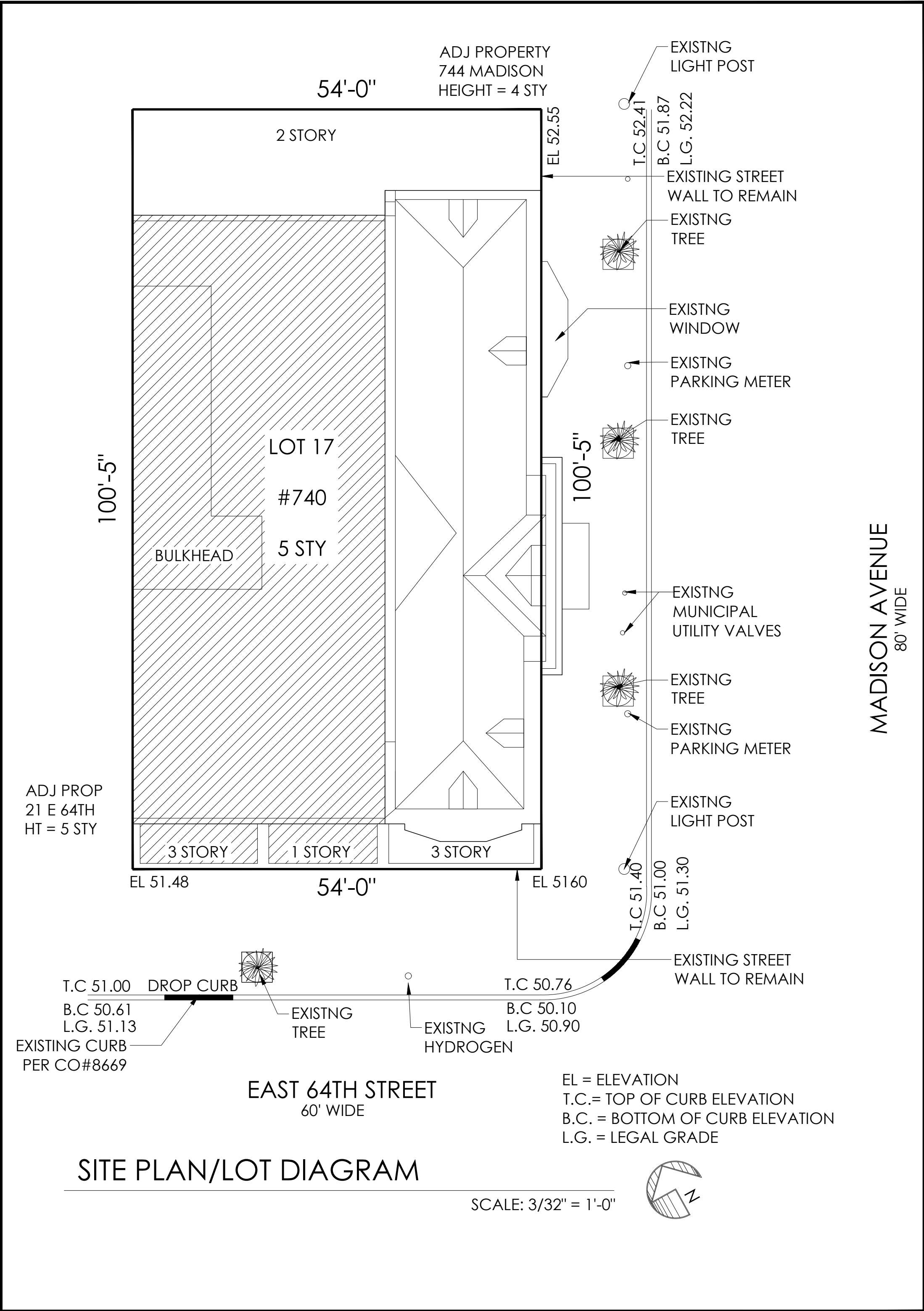
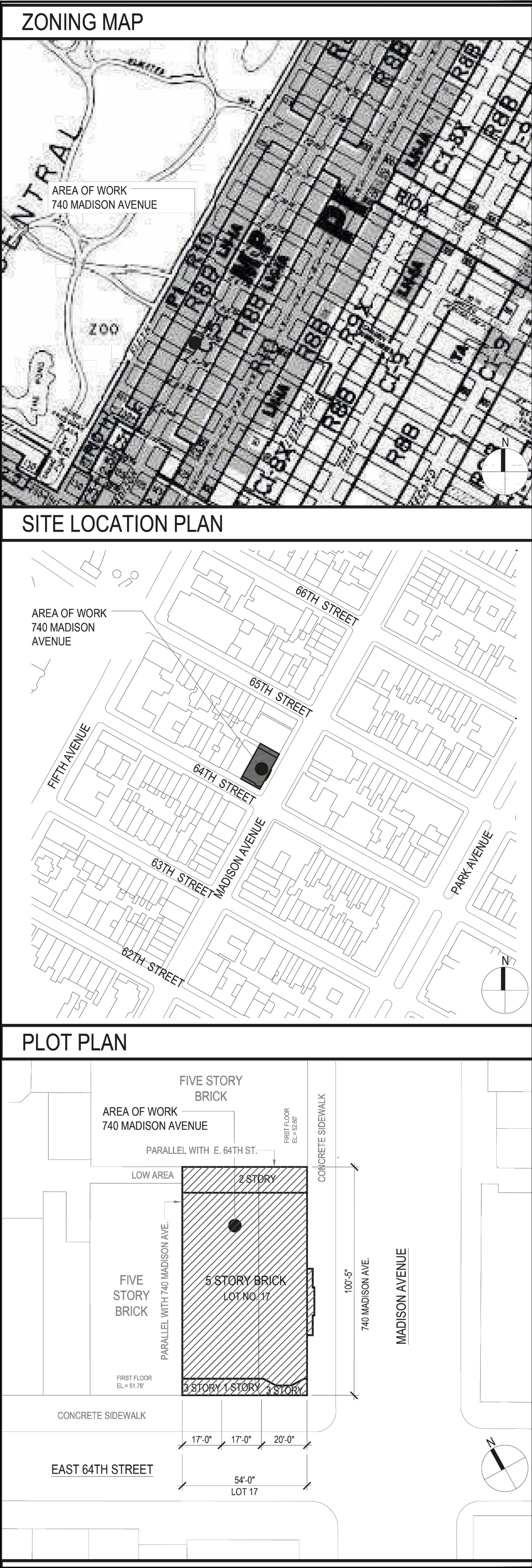
© 2024 VL Architects



FACADE RESTORATION WORK

23 EAST 64TH STREET  
25 EAST 64TH STREET

SHEET INDEX		
#	#-###	SHEET TITLE
1	T-000	COVER SHEET
2	T-100	AS-BUILT SITE MAP, ZONING MAP, SITE LOCATION PLAN, PLOT PLAN
3	A-100	64TH ELEVATIONS: PRE-PERMIT, APPROVED, AS-BUILT, PROPOSED
4	A-101	1ST FLOOR PLAN - AS BUILT
5	A-102	PROPOSED RESTORATION - 23 EAST 64TH STREET
6	A-103	PROPOSED RESTORATION - 25 EAST 64TH STREET
7	A-104	EXTERIOR DOOR DETAILS & SAMPLE
8	A-105	PRE-PERMIT PHOTOS
9	A-106	HISTORIC PHOTOS AND REFERENCE
10	A-107	AS-BUILT PHOTOS



**VLARCHITECTS**

1115 Broadway, 12<sup>th</sup> Floor  
New York, NY 10010  
T. 212.631.0590 F. 212.631.0591  
VLarchitects@aol.com

KEY PLAN

EAST 64TH STREET

MADISON AVENUE

Revisions

05.06.24	FACADE RESTORATION & SIGN OFF ALL OPEN LPC PERMITS
----------	--

Project  
**23E & 25E 64TH STREET**  
(AKA 740 MADISON AVENUE)

Title

**AS-BUILT SITE PLAN  
ZONING MAP,  
SITE LOCATION PLAN  
SHEET INDEX**

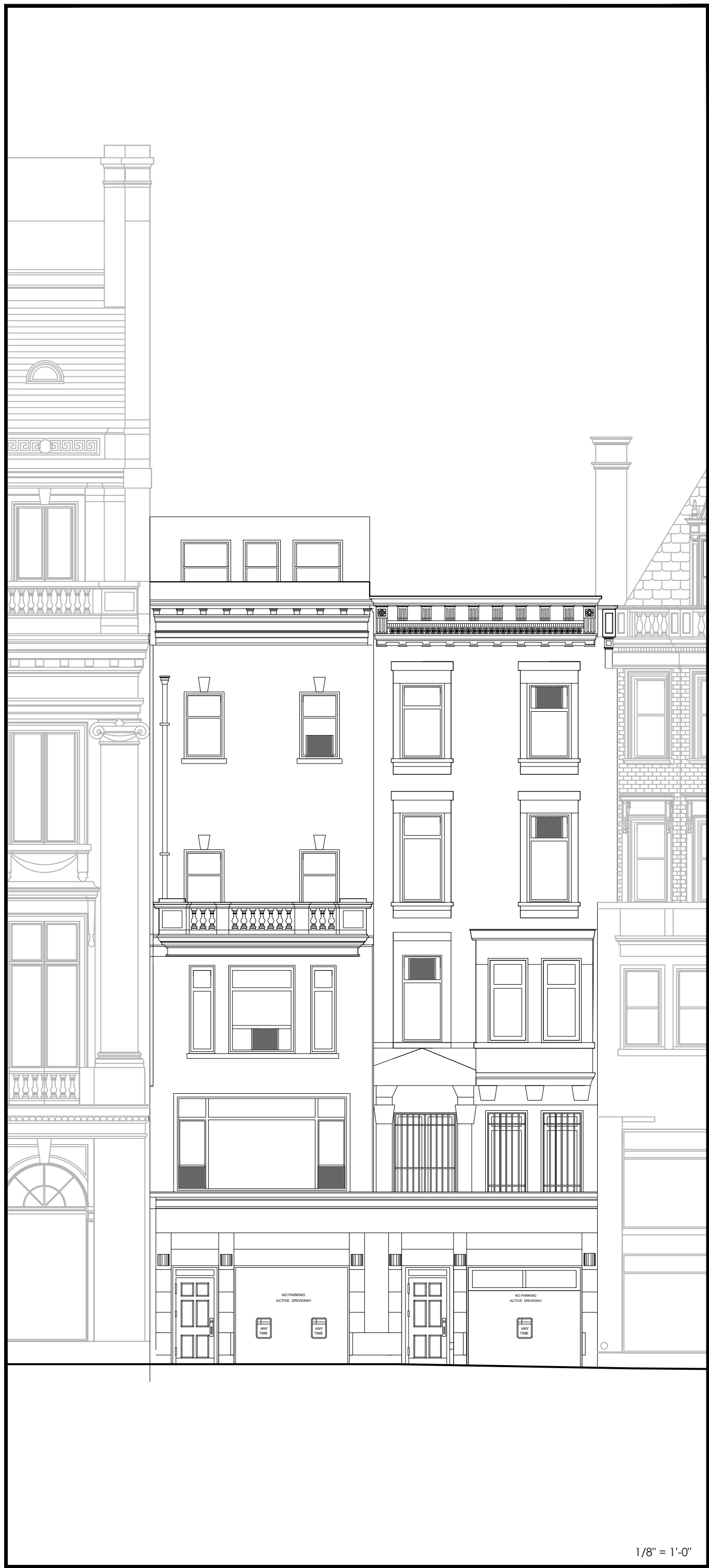
Seal & Signature

Date: MAY 2024  
Project No: 1002  
Drawing by: LVL, HC  
Checked by: LVL  
Scale: AS NOTED  
DWG No:

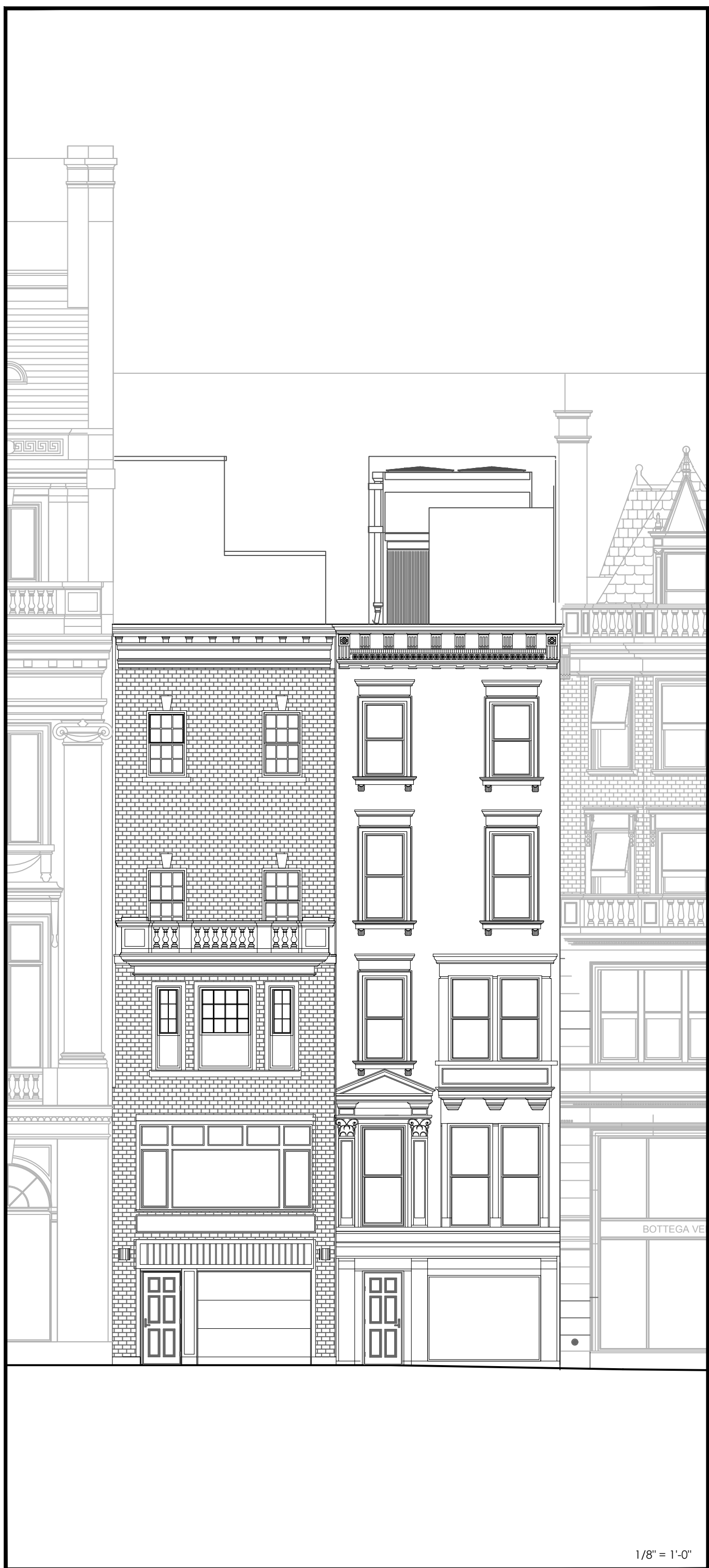
**T-100**

Cad file # 1002\_740 Madison | 2 of 10  
© 2024 VL Architects

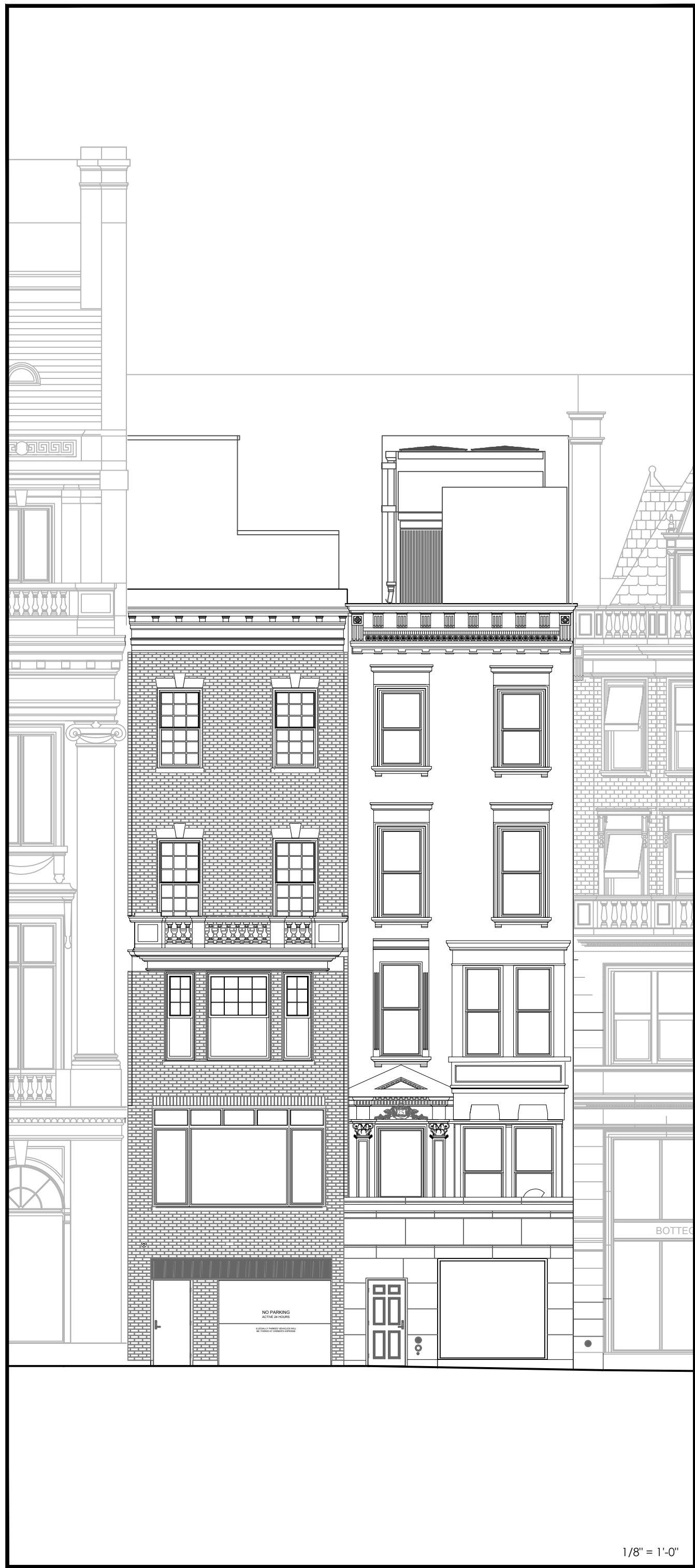




PRE-PERMIT



APPROVED

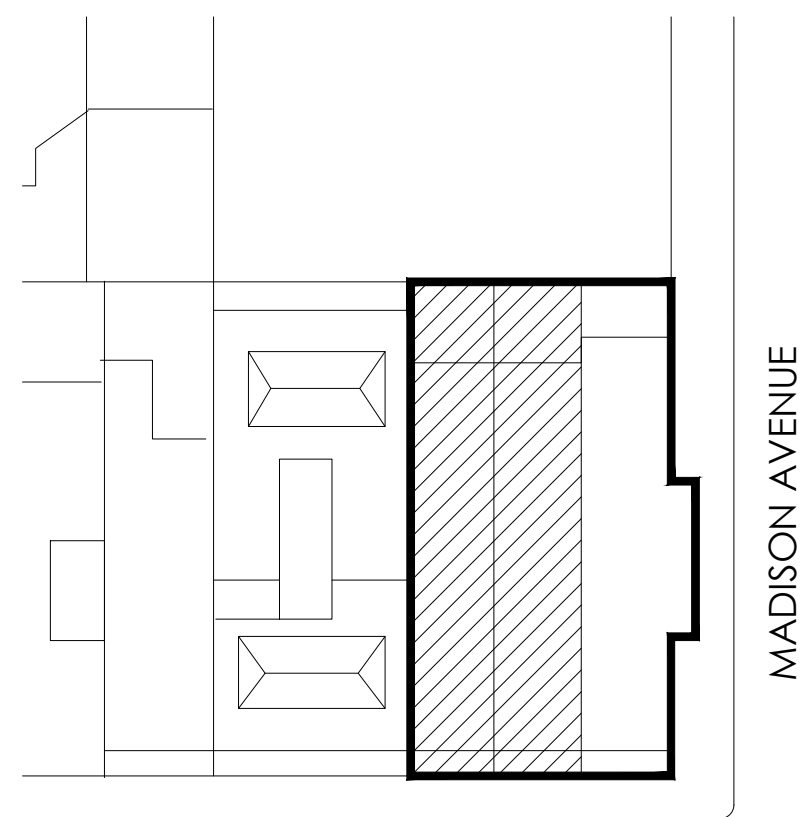


AS BUILT



PROPOSED

KEY PLAN



EAST 64TH STREET

Revisions

05.06.24 FACADE RESTORATION & SIGN OFF ALL OPEN LPC PERMITS

Project  
23E & 25E 64TH STREET  
(AKA 740 MADISON AVENUE)

Title  
64TH ELEVATIONS  
- PRE PERMIT  
- APPROVED  
- AS BUILT  
- PROPOSED

Seal & Signature

Date: MAY 2024  
Project No: 1002  
Drawing by: LVL, HC  
Checked by: LVL  
Scale: AS NOTED

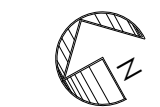
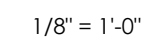
DWG No:

A-100

Cad file #  
1002\_740 Madison

3 of 10

© 2024 VL Architects



## Revisions

05.06.24 FACADE RESTORATION &amp; SIGN OFF ALL OPEN LPC PERMITS

Project  
23E & 25E 64TH STREET  
(AKA 740 MADISON AVENUE)

Title

1ST FLOOR PLAN  
AS-BUILT

Seal &amp; Signature

Date: MAY 2024  
Project No: 1002  
Drawing by: LVL, HC  
Checked by: LVL  
Scale: AS NOTED  
DWG No:

# A-101

Cad file # 4 of 10  
1002\_740 Madison

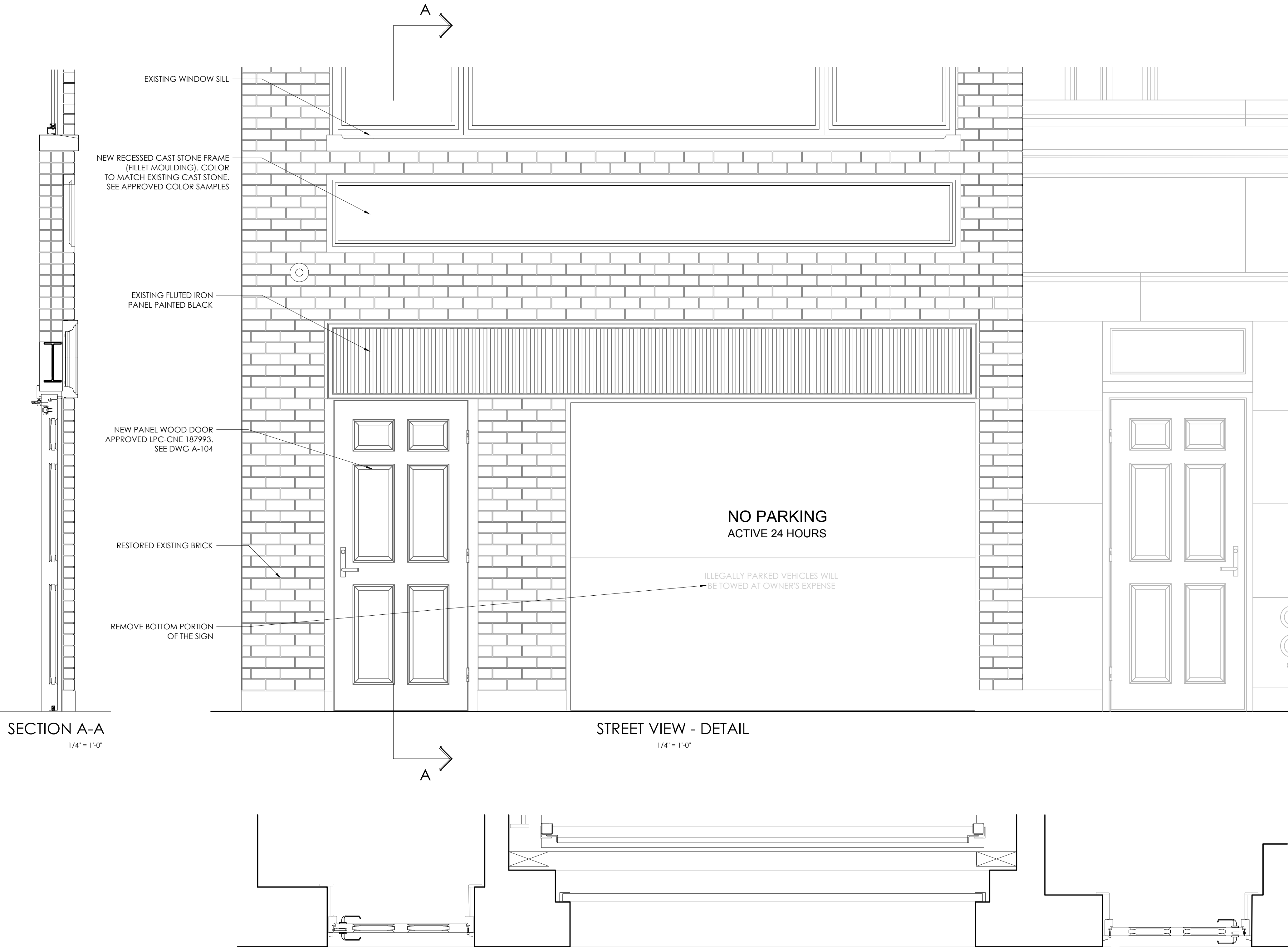
© 2024 VL Architects

© 2024 VL Architects

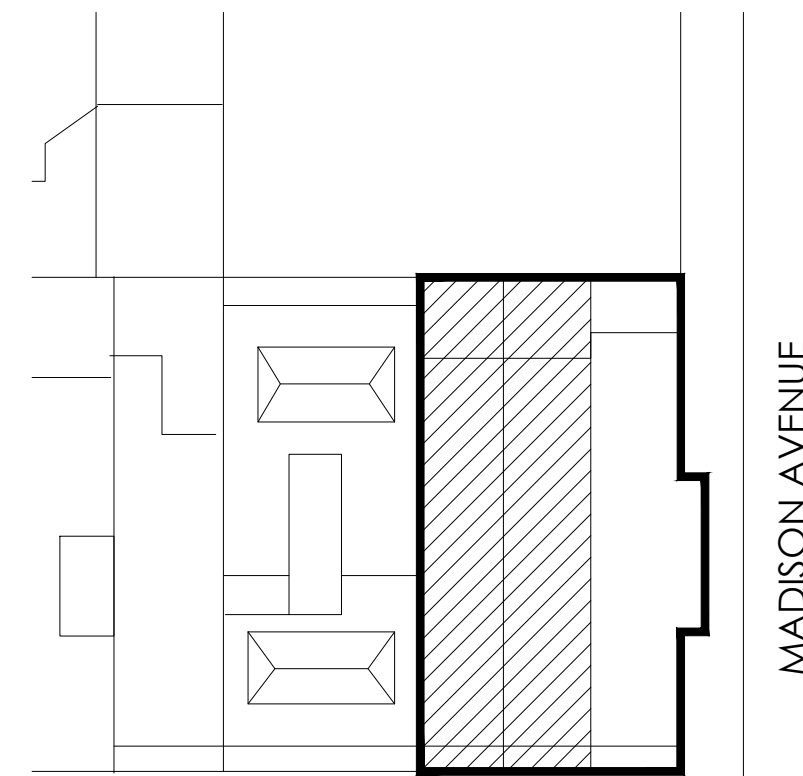


STREET VIEW  
1/4" = 1'-0"

23 EAST 64TH STREET  
NEO-GREEK STYLE ROW HOUSE  
DESIGNED BY PECKERING & WALKER  
BUILT 1907-1908  
ALTERED 1926  
ALTERED 1980

STREET VIEW - DETAIL  
1/4" = 1'-0"PLAN  
3/4" = 1'-0"

KEY PLAN



EAST 64TH STREET

Revisions

05.06.24 FACADE RESTORATION &amp; SIGN OFF ALL OPEN LPC PERMITS

Project  
23E & 25E 64TH STREET  
(AKA 740 MADISON AVENUE)

Title

23E 64TH STREET  
PROPOSED RESTORATION  
ELEVATION AND PLAN

Seal &amp; Signature

Date: MAY 2024

Project No: 1002

Drawing by: LVL, HC

Checked by: LVL

Scale: AS NOTED

DWG No:

# A-102

Cad file # 5 of 10

1002\_740 Madison

© 2024 VL Architects



STREET VIEW

1/4" = 1'-0"

25 EAST 64TH STREET  
ITALINATED STYLE (RENAISSANCE REVIVAL STYLE)  
DESIGNED BY JOHN G., PRAGUE  
BUILT 1879-80  
ALTERED 1919  
ALTERED 1980



SECTION A-A

3/4" = 1'-0"

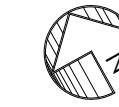
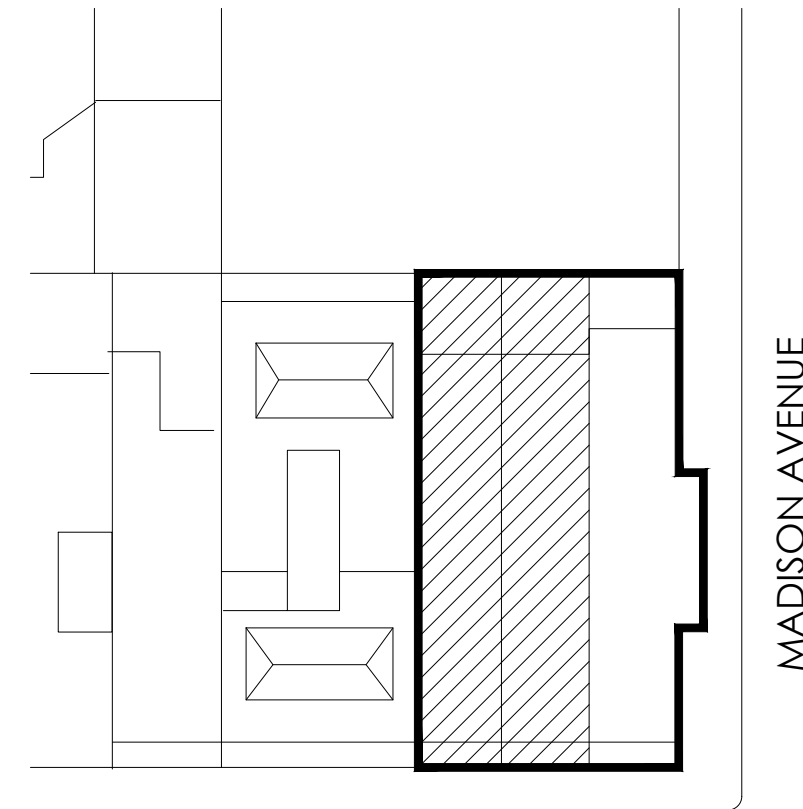
STREET VIEW - DETAIL

3/4" = 1'-0"

SECTION B-B

3/4" = 1'-0"

## KEY PLAN



EAST 64TH STREET

## Revisions

05.06.24 FACADE RESTORATION &amp; SIGN OFF ALL OPEN LPC PERMITS

## Project

23E &amp; 25E 64TH STREET

(AKA 740 MADISON AVENUE)

## Title

25E 64TH STREET  
PROPOSED RESTORATION  
ELEVATION

## Seal &amp; Signature

Date: MAY 2024

Project No: 1002

Drawing by: LVL, HC

Checked by: LVL

Scale: AS NOTED

DWG No:

A-103

Cad file #

1002\_740 Madison

6 of 10

© 2024 VL Architects





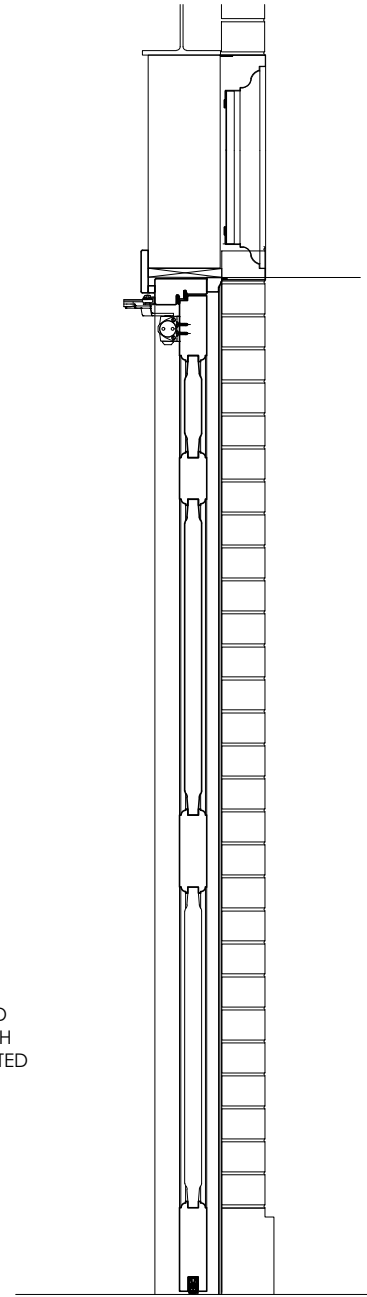
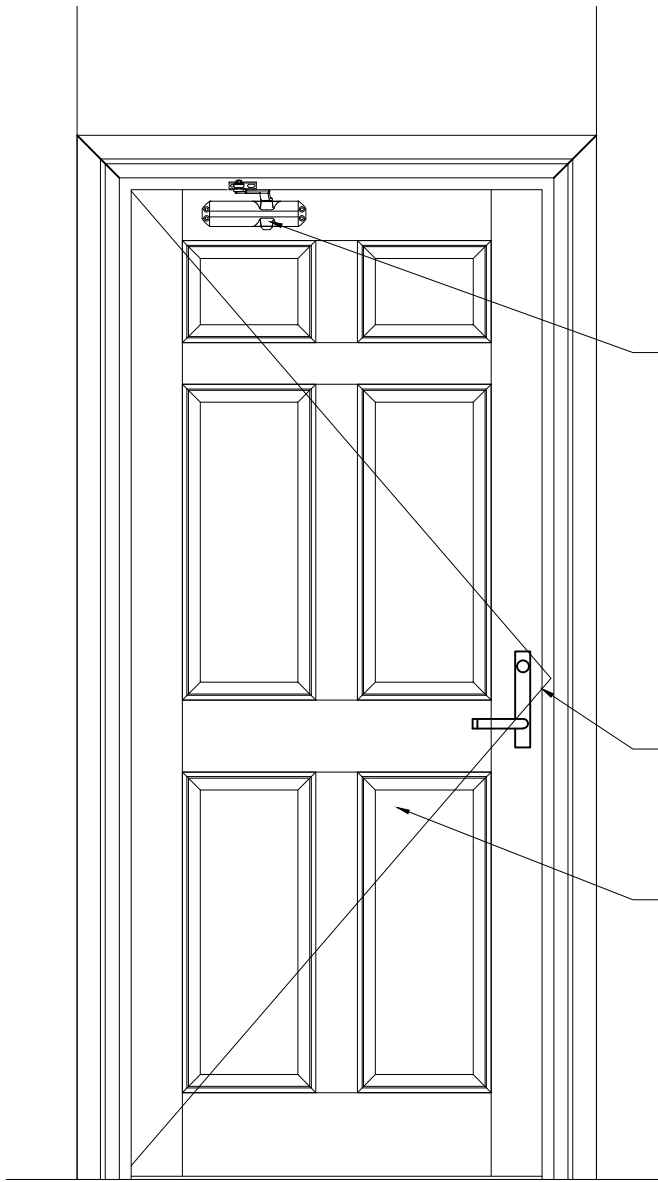
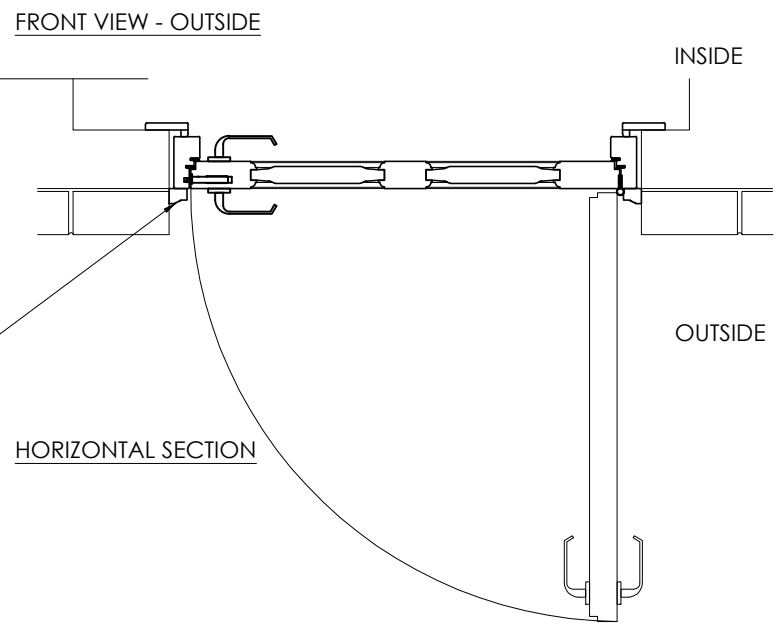
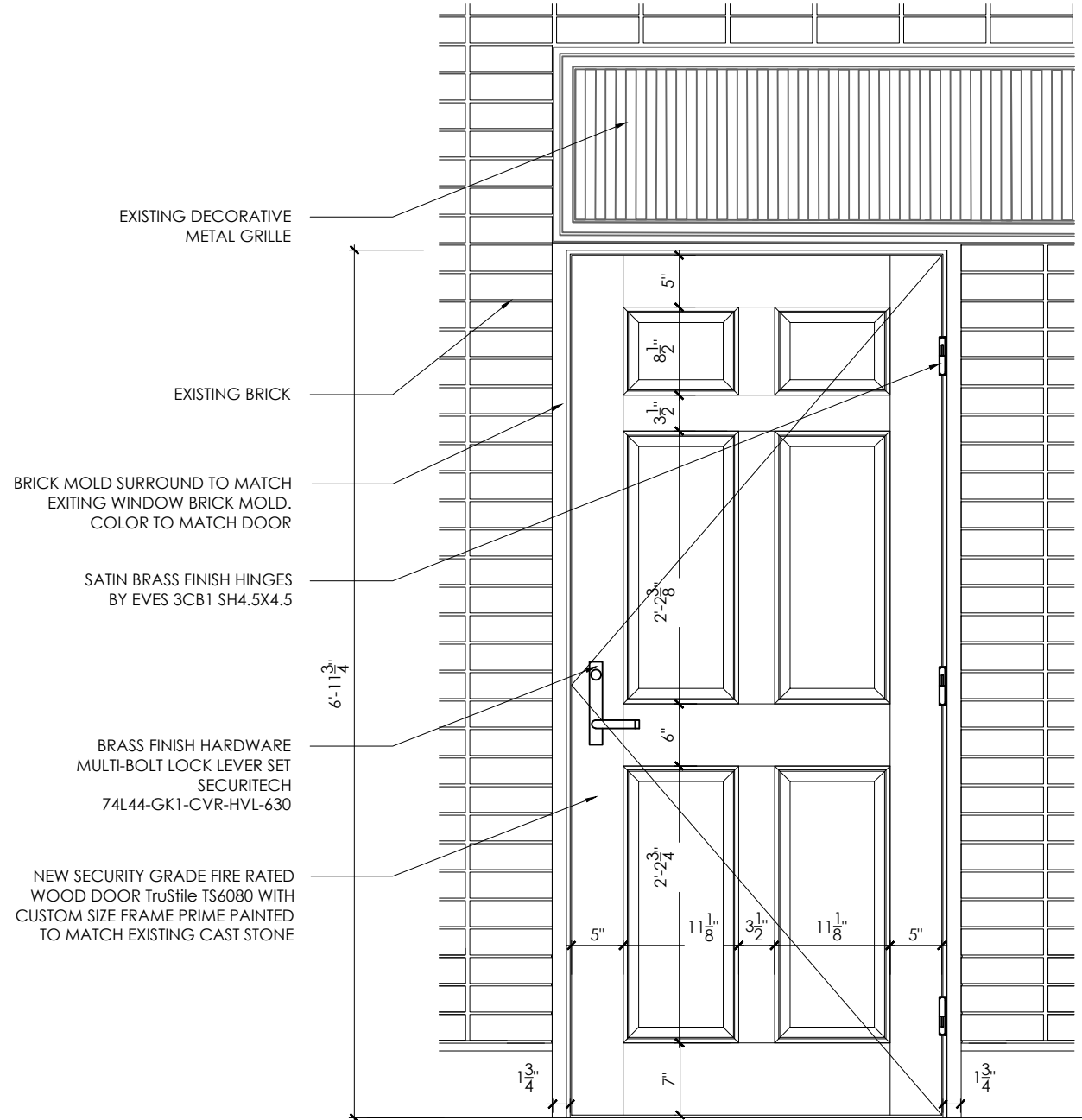
IVES 3CB1 SH4.5X4.5 SECURITY BUTT HINGES  
SATIN BRASS FINISH



LCN 4110 SURFACE MTD. CLOSER SATIN BRASS FINISH

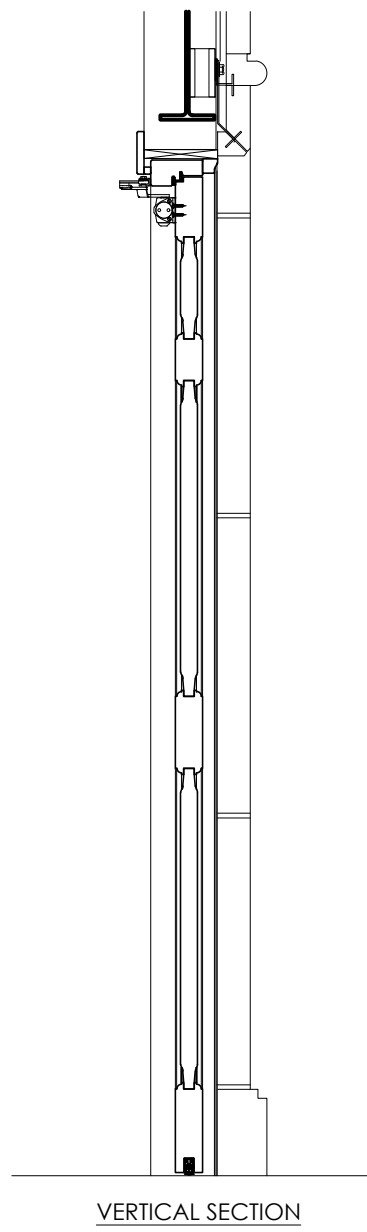
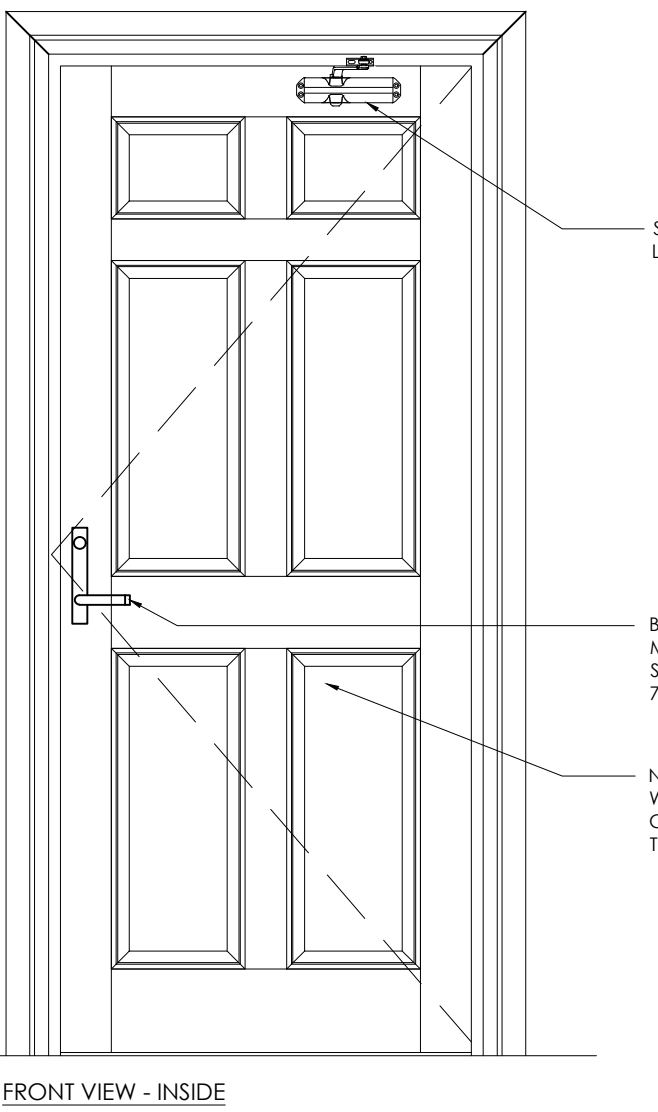
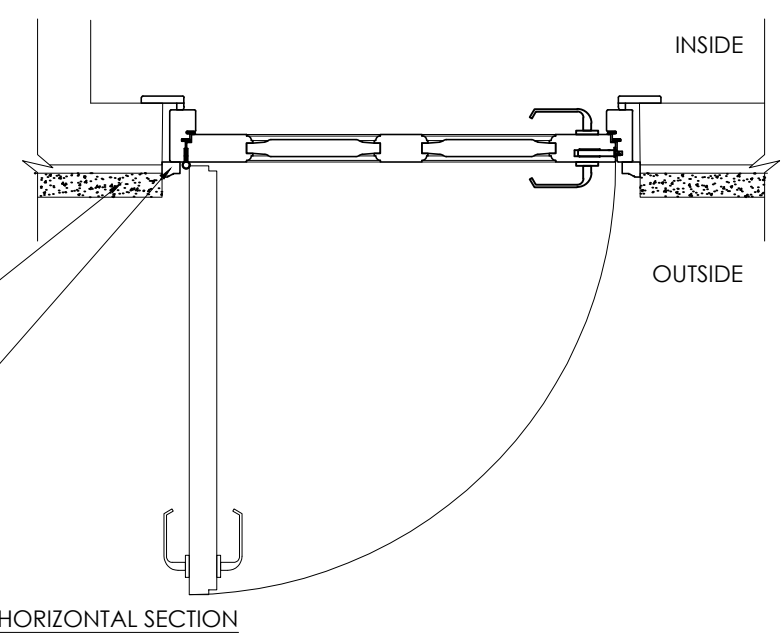
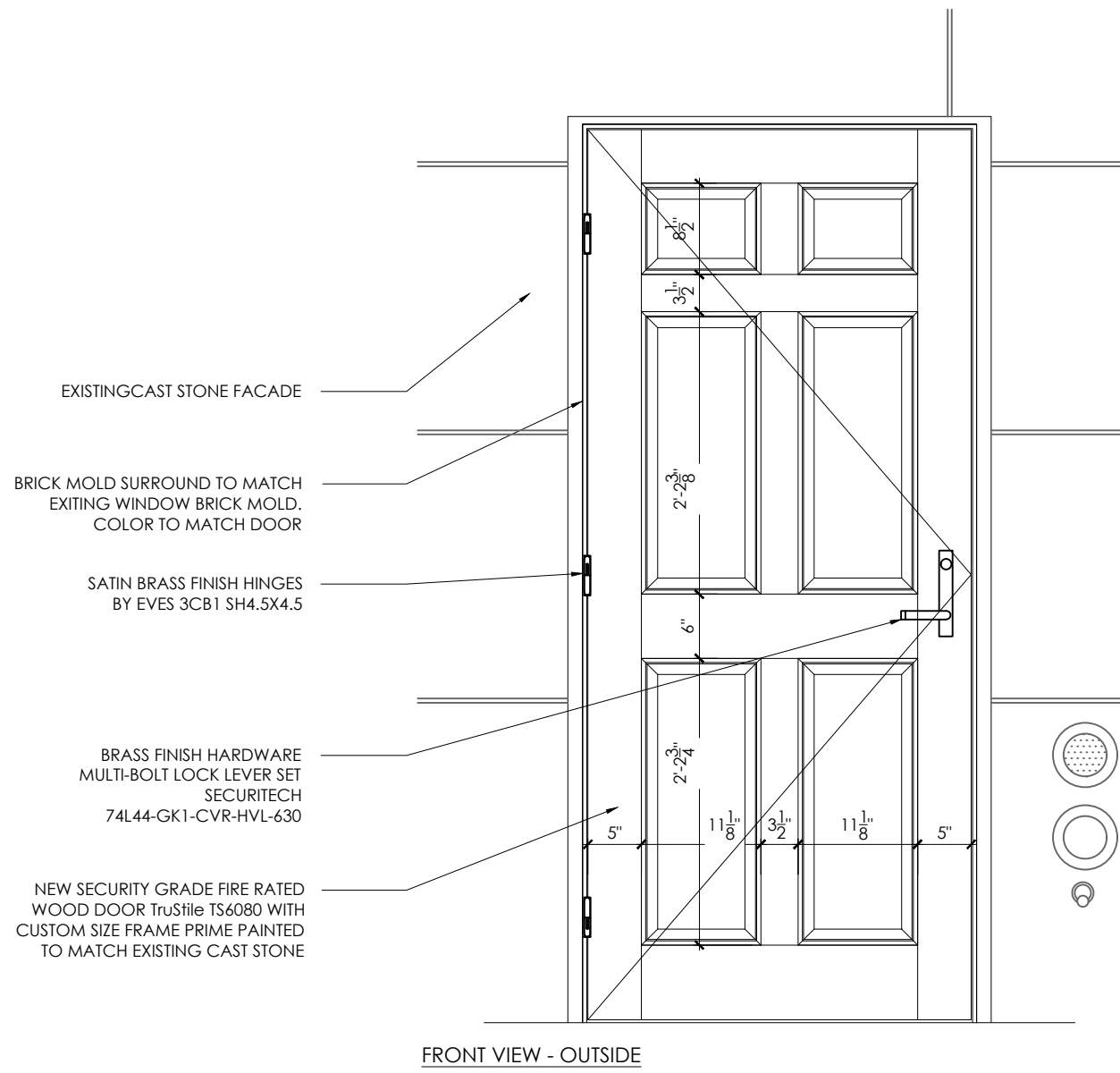


SECURITECH 74L44-GK1-CVR-HVL-630 MULTI-BOLT  
LOCK LEVERSET SATIN BRASS FINISH



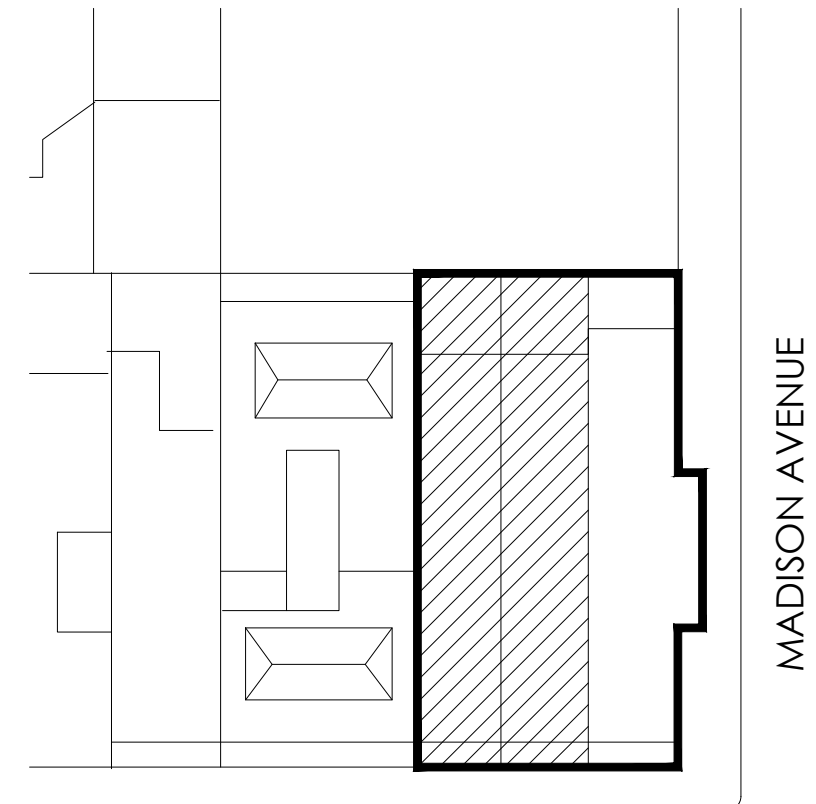
23 EAST 64TH ENTRY DOOR  
3/4" = 1'-0"

CNE 18-7993



25 EAST 64TH ENTRY DOOR  
3/4" = 1'-0"

KEY PLAN



EAST 64TH STREET

MADISON AVENUE

Revisions

05.06.24 FACADE RESTORATION & SIGN OFF ALL OPEN LPC PERMITS

Project  
23E & 25E 64TH STREET  
(AKA 740 MADISON AVENUE)

Title

EXTERIOR DOOR DETAILS  
& SAMPLES

Seal & Signature

Date: MAY 2024

Project No: 1002

Drawing by: LVL, HC

Checked by: LVL

Scale: AS NOTED

DWG No:

A-104

Cad file #

1002\_740 Madison

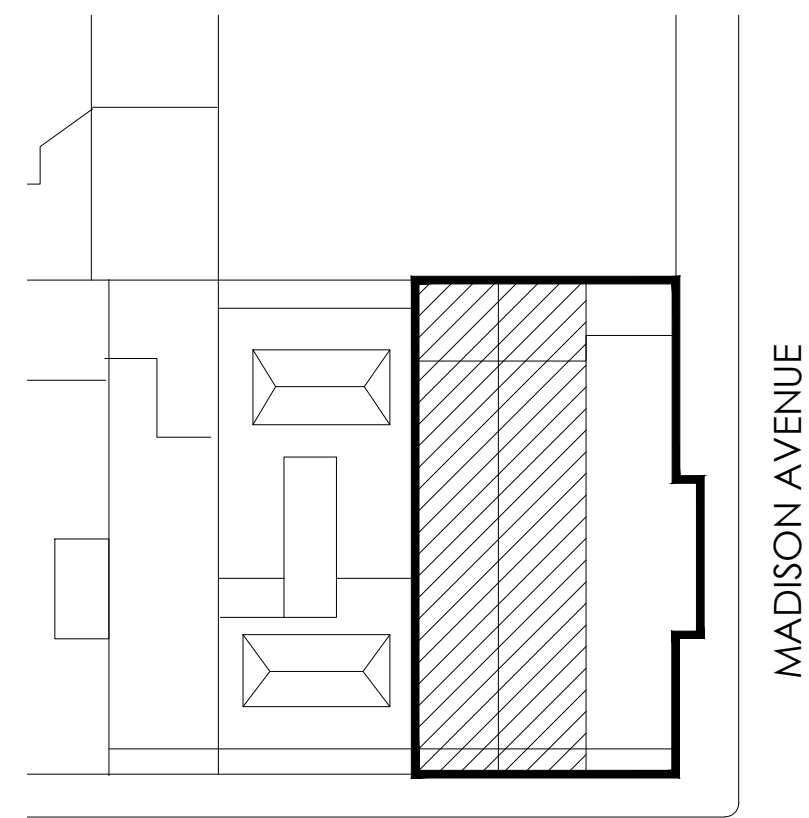
© 2024 VL Architects

7 of 10





KEY PLAN



EAST 64TH STREET

Revisions

05.06.24 FACADE RESTORATION & SIGN OFF ALL OPEN LPC PERMITS

Project  
23E & 25E 64TH STREET  
(AKA 740 MADISON AVENUE)

Title

PRE-PERMIT  
PHOTOS

Seal & Signature

Date: MAY 2024

Project No: 1002

Drawing by: LVL, HC

Checked by: LVL

Scale: AS NOTED

DWG No:

A-105

Cad file #

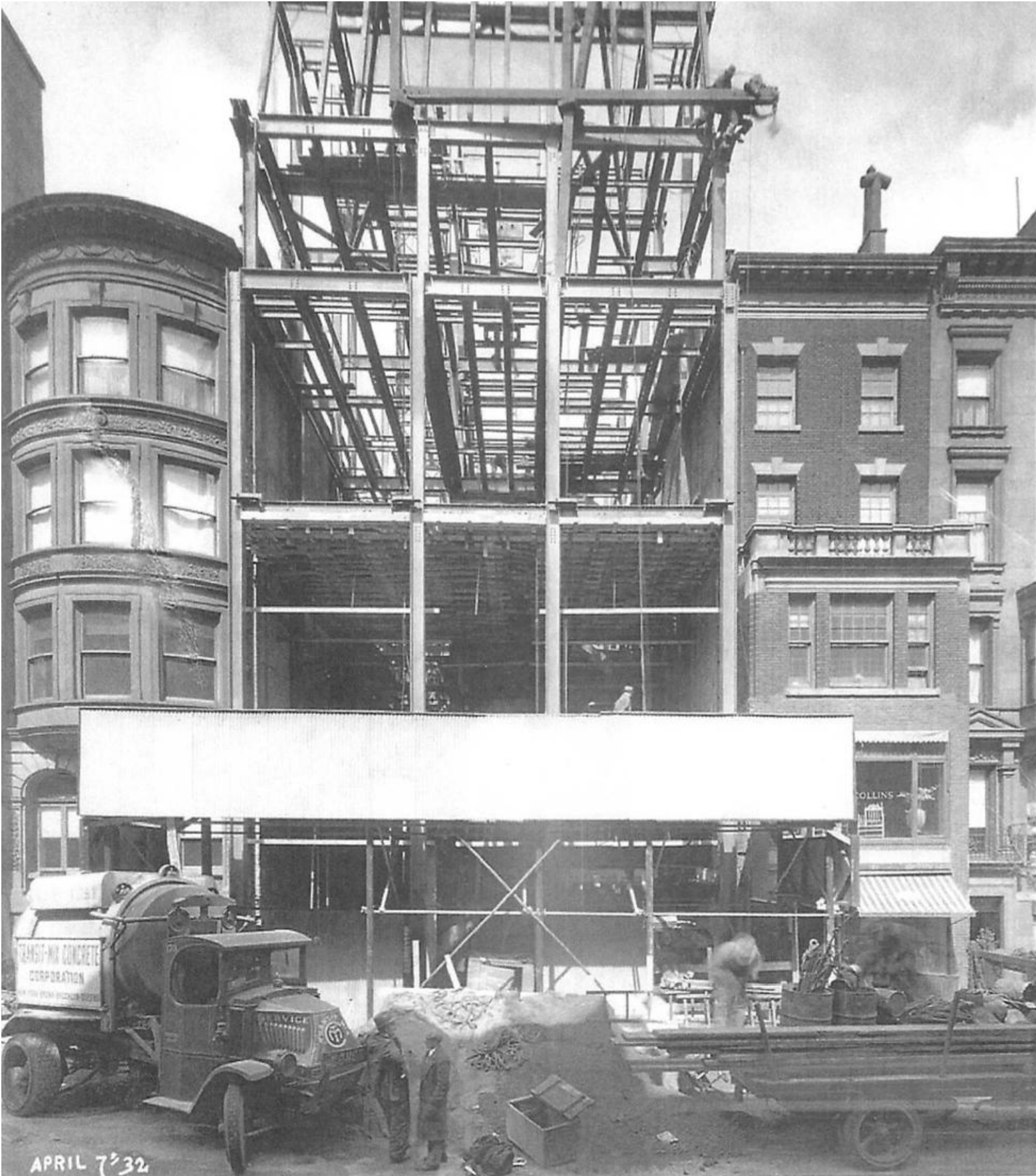
1002\_740 Madison

8 of 10

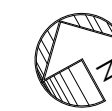
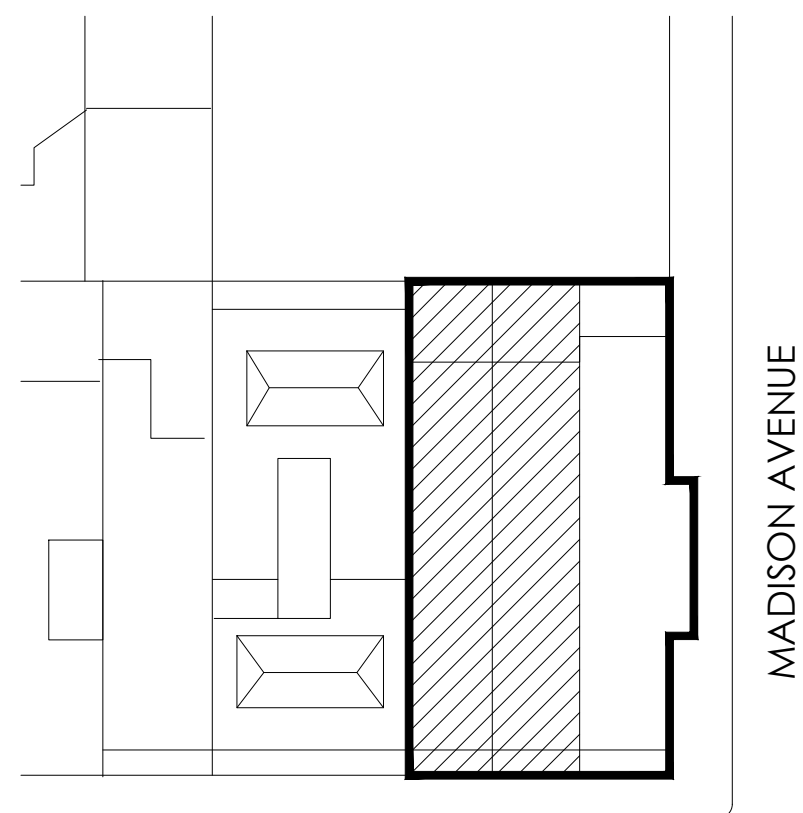
© 2024 VL Architects







KEY PLAN



EAST 64TH STREET

Revisions

05.06.24 FACADE RESTORATION & SIGN OFF ALL OPEN LPC PERMITS

Project  
23E & 25E 64TH STREET  
(AKA 740 MADISON AVENUE)

Title

HISTORIC  
PHOTOS & REFERENCES

Seal & Signature

Date: MAY 2024

Project No: 1002

Drawing by: LVL, HC

Checked by: LVL

Scale: AS NOTED

DWG No:

A-106

Cad file #  
1002\_740 Madison

9 of 10

© 2024 VL Architects





25 EAST 64TH STREET  
Facade approved sample

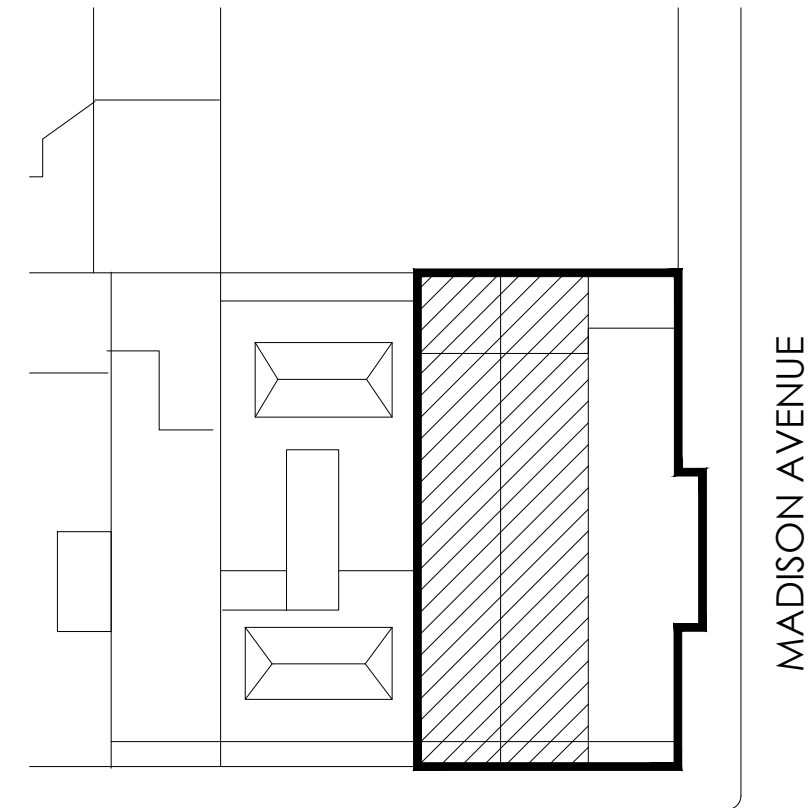


23 EAST 64TH STREET  
Facade approved sample



23 EAST 64TH STREET  
Facade approved sample

KEY PLAN



EAST 64TH STREET

Revisions

05.06.24 FACADE RESTORATION & SIGN OFF ALL OPEN LPC PERMITS

Project  
23E & 25E 64TH STREET  
(AKA 740 MADISON AVENUE)

Title

AS-BUILT PHOTOS  
APPROVED SAMPLES

Seal & Signature

Date: MAY 2024  
Project No: 1002  
Drawing by: LVL, HC  
Checked by: LVL  
Scale: AS NOTED  
DWG No:

A-107

Cad file # 1002\_740 Madison

10 of 10  
© 2024 VL Architects