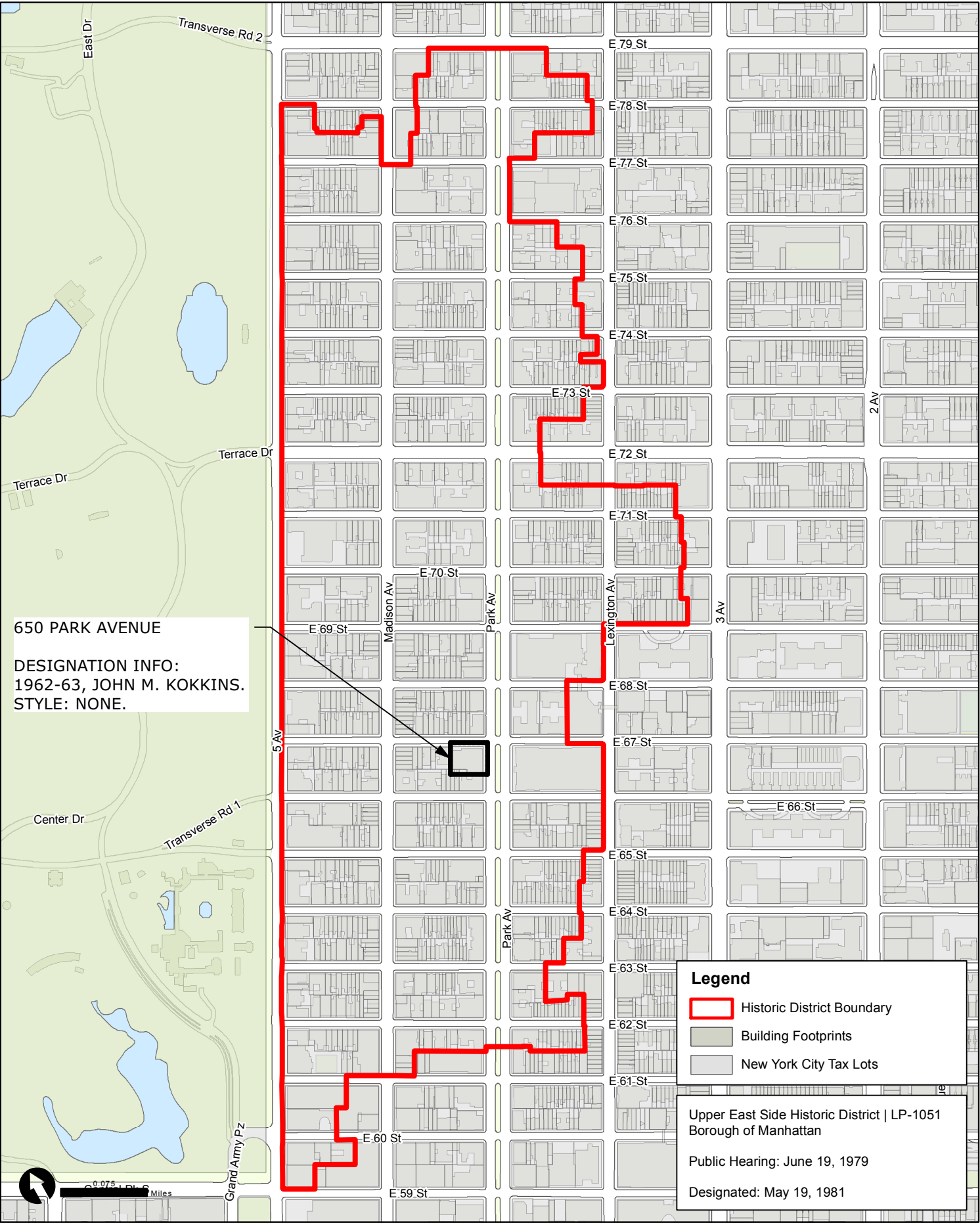




Upper East Side Historic District | LP-1051

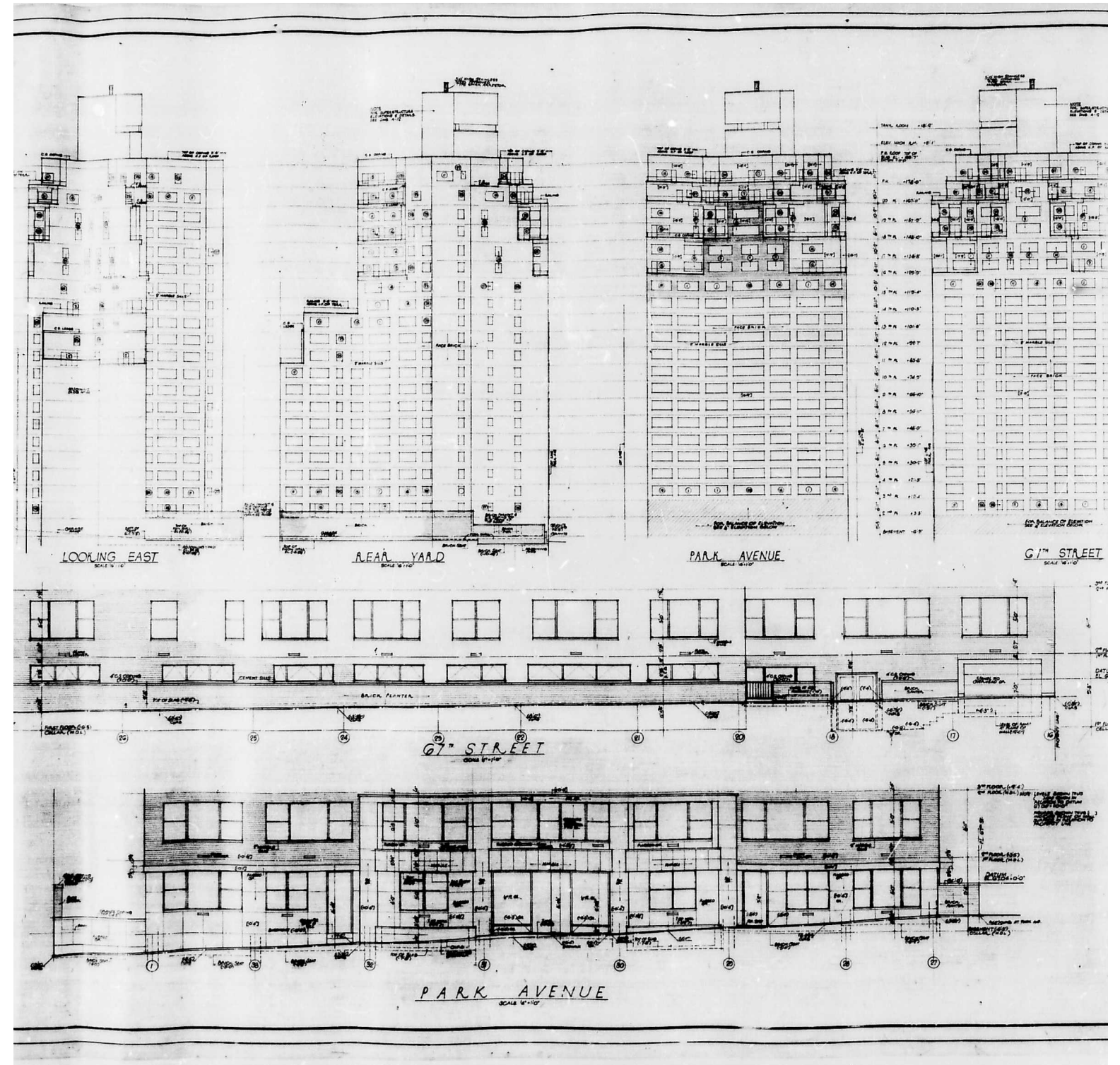
NYC Landmarks Preservation Commission







650 Park Avenue Brochure, 1963



650 Park Avenue original drawings

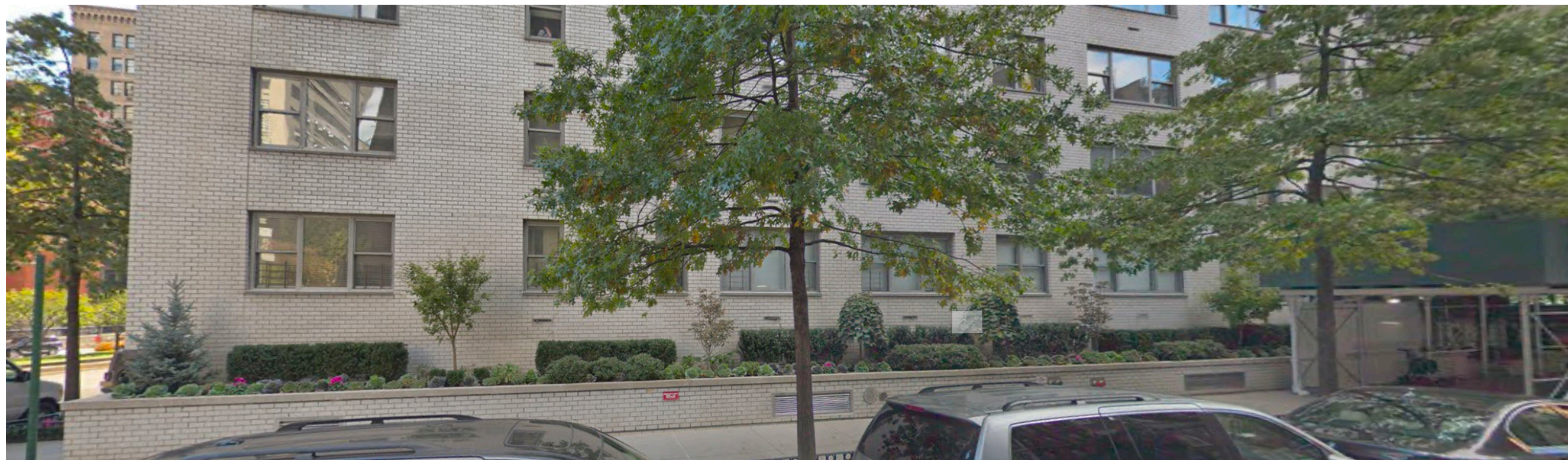
## 650 PARK AVENUE

LPC PUBLIC HEARING DRAFT  
HIGGINS QUASEBARTH & PARTNERS, LLC • 13 FEBRUARY 2024





Google streetview of Park Avenue base prior to sidewalk shed installation



Google streetview of East 67th Street base prior to sidewalk shed installation

**650 PARK AVENUE**

LPC PUBLIC HEARING DRAFT  
HIGGINS QUASEBARTH & PARTNERS, LLC • 13 FEBRUARY 2024





East 67th Street facade, 2024



Garage entrance on East 67th Street, 2024



Building base at East 67th Street, looking west, 2024





Park Avenue entrance and existing canopy



Northern end of Park Avenue base



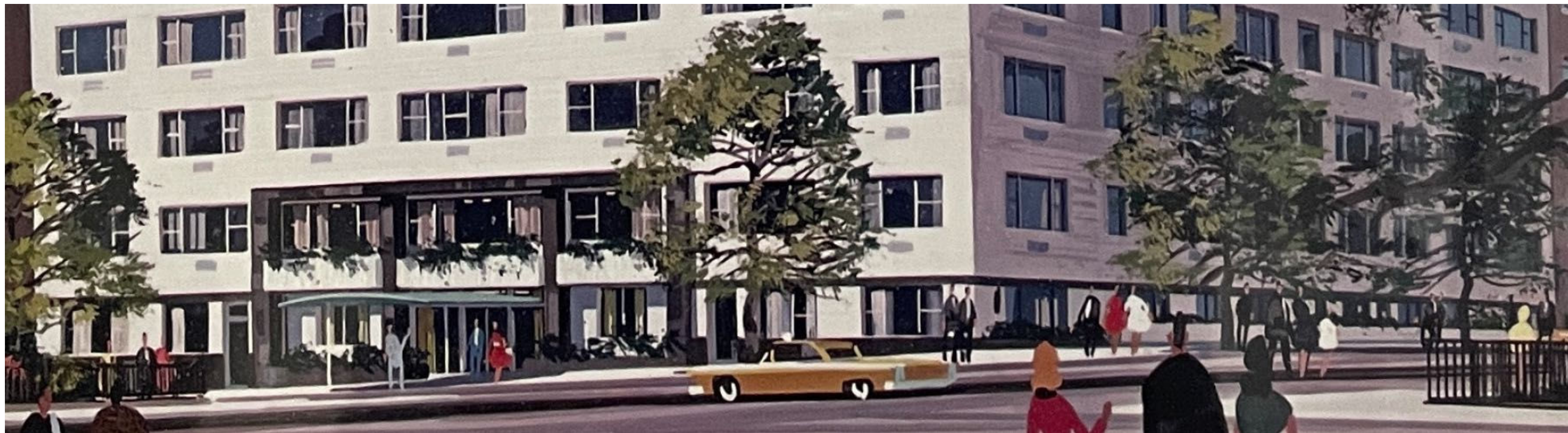
Southern end of Park Avenue base



White marble cladding to the north of the primary entrance on Park Avenue

650 PARK AVENUE





ENLARGED 1963 BROCHURE





EXISTING STREET VIEW



RENDERING: PARK AVENUE





EXISTING STREET VIEW



RENDERING: PARK AVENUE





EXISTING STREET VIEW



RENDERING: 67TH STREET





1

PARK AVENUE ELEVATION (EAST) - EXISTING  
Scale: 3/32" = 1'-0"



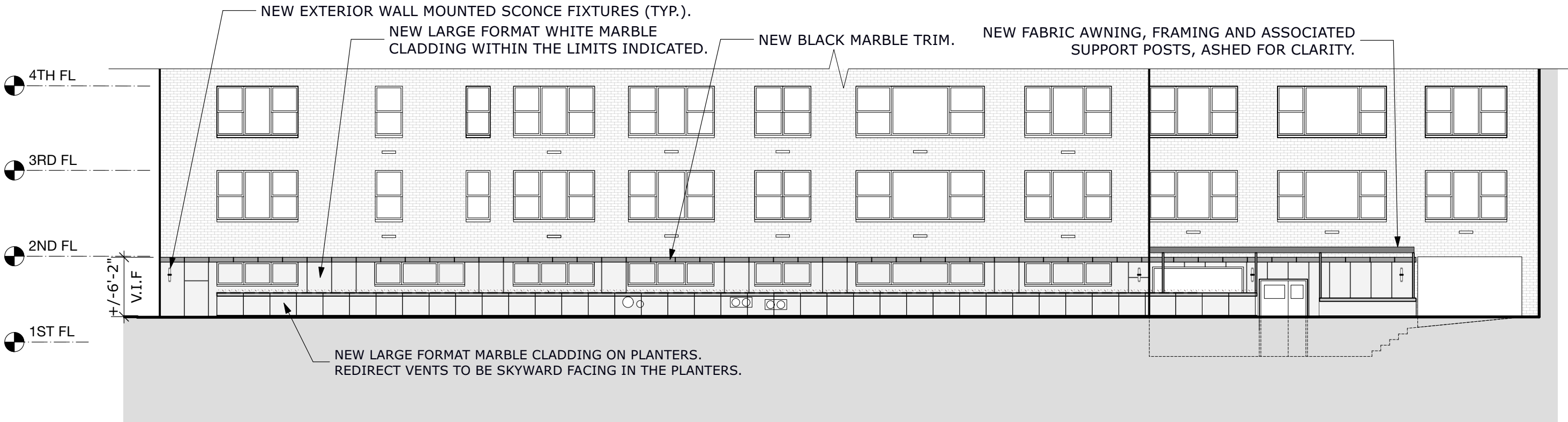
2

PARK AVENUE ELEVATION (EAST) - PROPOSED  
Scale: 3/32" = 1'-0"





1 67TH STREET ELEVATION (NORTH) - EXISTING  
Scale: 3/32" = 1'-0"

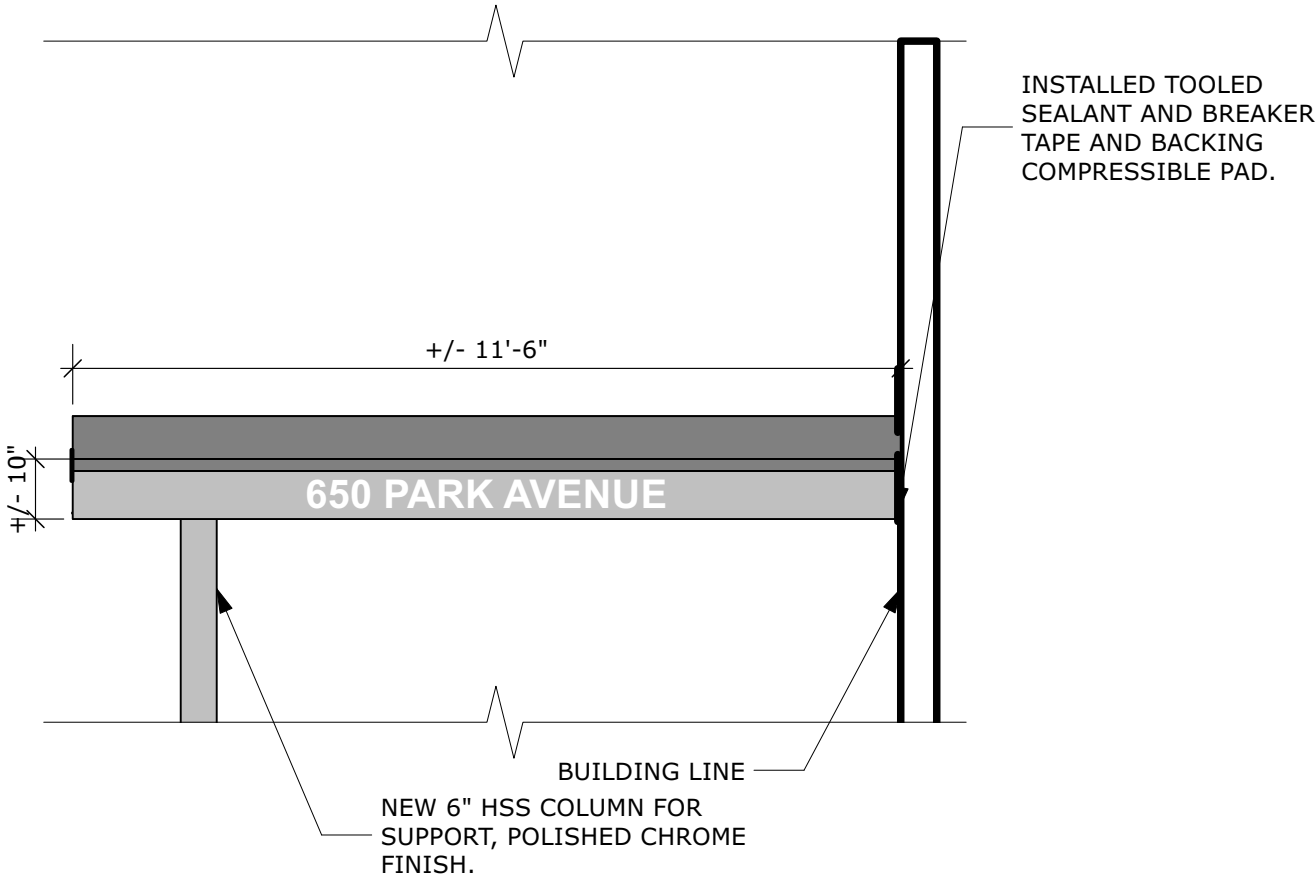


2 67TH STREET ELEVATION (NORTH) - PROPOSED  
Scale: 3/32" = 1'-0"





1 MAIN ENTRANCE ELEVATION - CANOPY  
Scale: 3/8" = 1'-0"



2 NORTH ELEVATION - CANOPY (SOUTH FACE SIMILAR , OPPOSITE HAND)  
Scale: 3/8" = 1'-0"



MARBLE CLADDING:



MARBLE SAMPLE:  
XTONE GLEM WHITE  
FINISH: NATURE  
MANUFACTURER: PORCELANOSA



MARBLE SAMPLE:  
XTONE LIEM BLACK  
FINISH: POLISHED  
MANUFACTURER: PORCELANOSA



EXTERIOR LIGHT SAMPLE

FABRIC CANOPY (67TH STREET):



FABRIC SAMPLE:  
TAN  
MANUFACTURER: SUNBRELLA AWNING FABRIC

FABRIC COVERING METAL CANOPY (PARK AVE):



FABRIC SAMPLE:  
BLACK  
MANUFACTURER: SUNBRELLA AWNING FABRIC





700 Park Avenue



700 Park Avenue base



700 Park Avenue base

650 PARK AVENUE





605 Park Avenue, 2023.



605 Park Avenue. 2016 COFA to remove the first and second floor cladding, and install white marble cladding with a black granite water table.

650 PARK AVENUE





1050 Fifth Avenue, ca. 2000



1050 Fifth Avenue, 2004 COFA to remove existing marble cladding at ground floor and brick cladding at the second floor and install new limestone cladding. Contributing building in Carnegie Hill Historic District.

## 650 PARK AVENUE

LPC PUBLIC HEARING DRAFT  
HIGGINS QUASEBARTH & PARTNERS, LLC • 13 FEBRUARY 2024





790 Madison Ave, 2008 -



790 Madison Avenue, 2023. 2010 COFA for removal of granite veneer at ground floor and brick from second floor; installation of new masonry cladding at bottom two floors. No style building in UES.

## 650 PARK AVENUE

LPC PUBLIC HEARING DRAFT  
HIGGINS QUASEBARTH & PARTNERS, LLC • 13 FEBRUARY 2024