

# THE BEEKMAN

575 PARK AVENUE, NEW YORK, NEW YORK

ARCHITECT: GEORGE F. PELHAM

YEAR BUILT: 1927

DESIGNATION: UPPER EAST SIDE HISTORIC DISTRICT

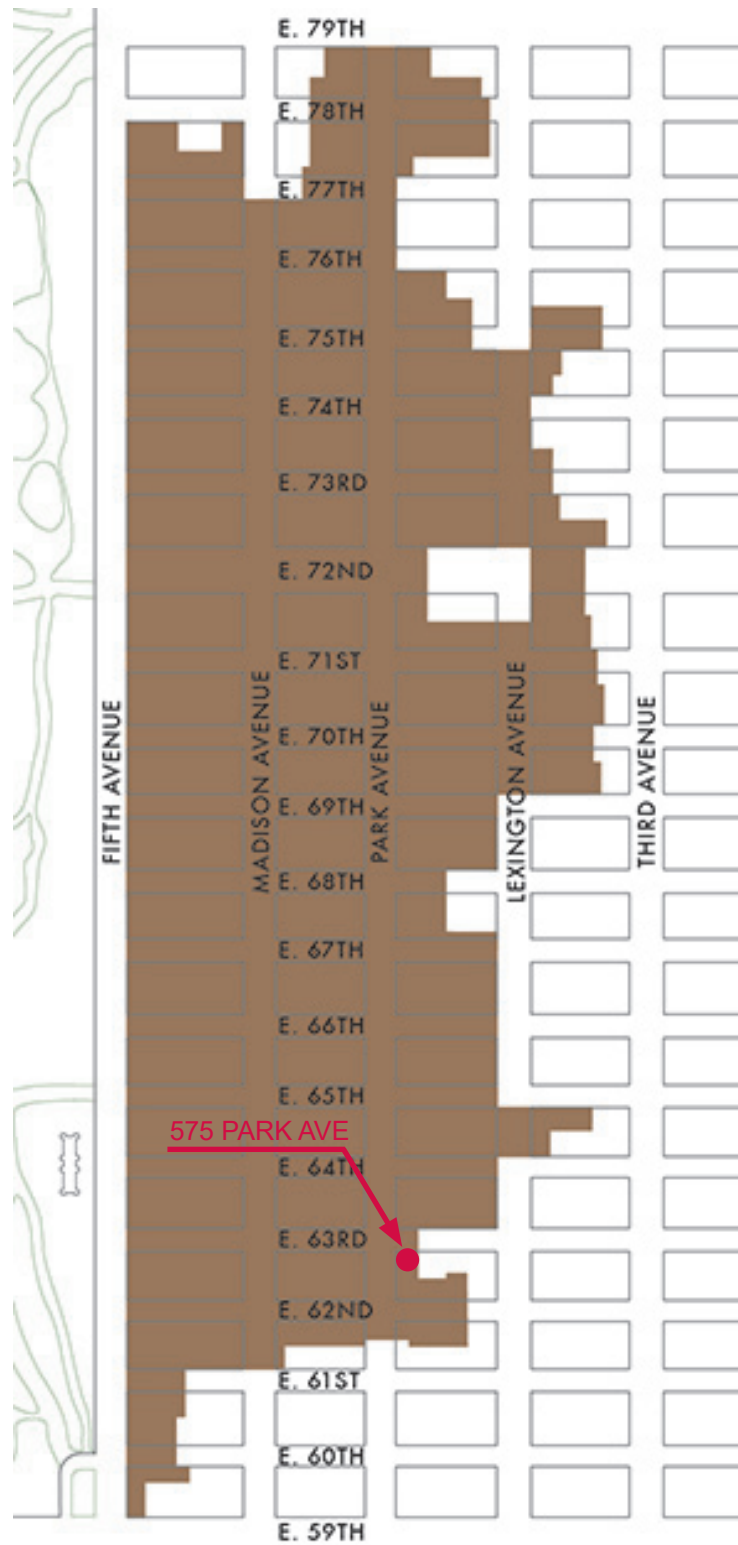


1940 TAX PHOTO

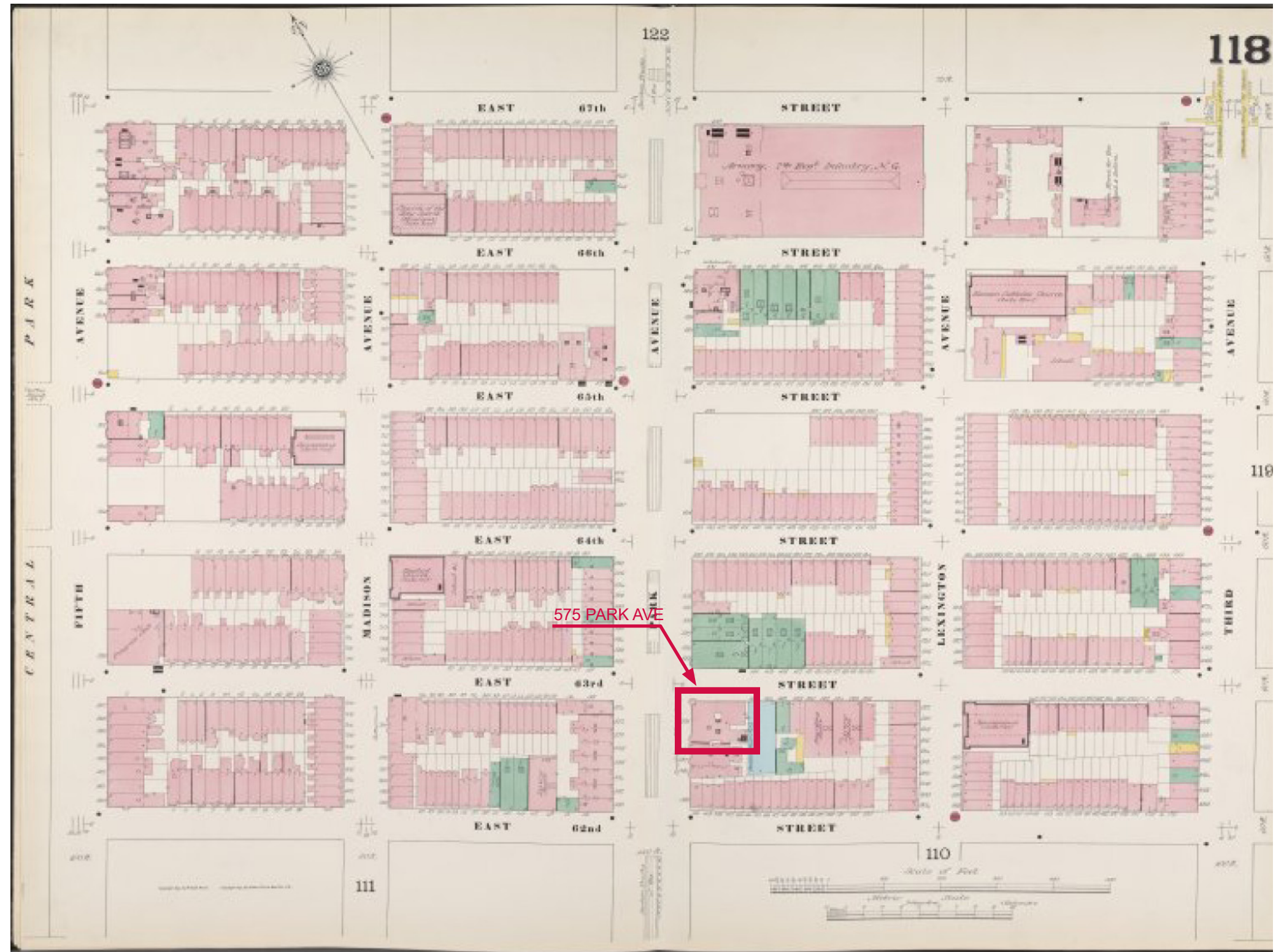


CURRENT PHOTO





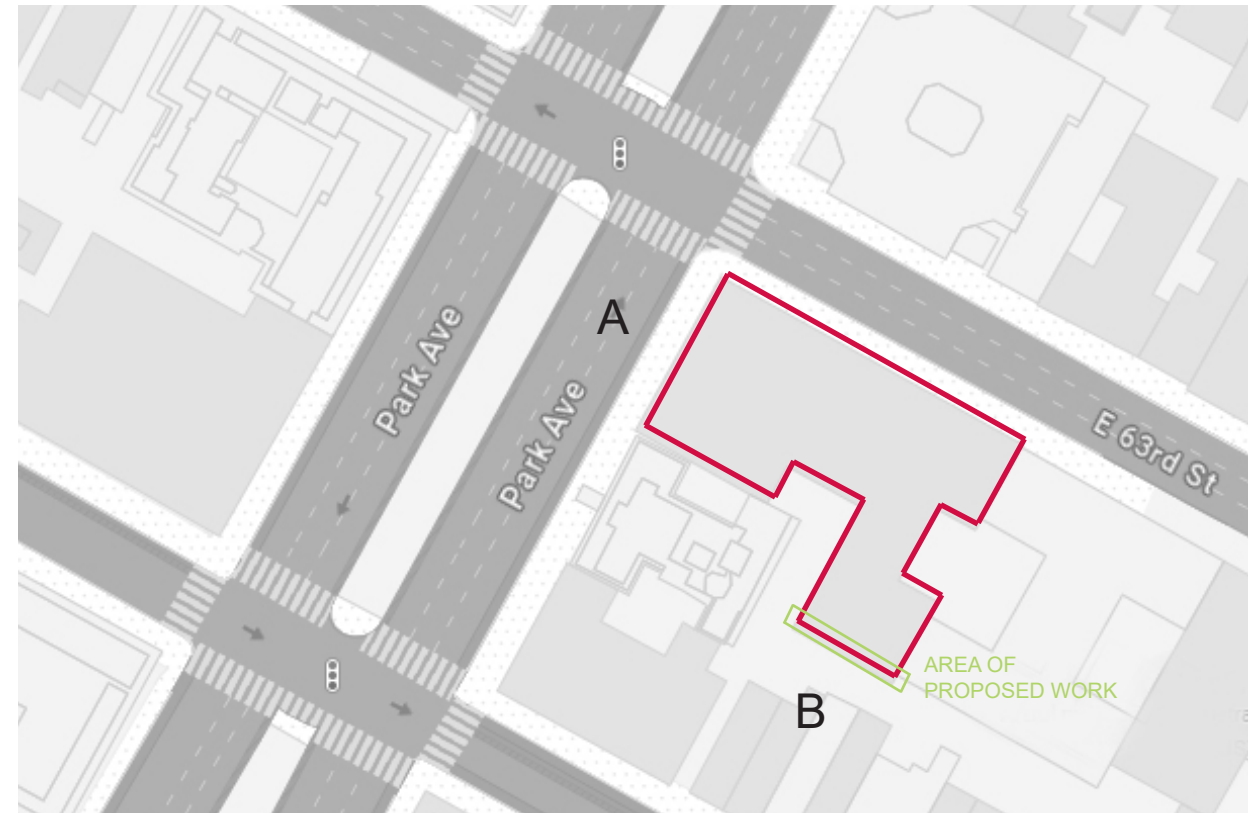
UPPER EAST SIDE HISTORIC DISTRICT MAP







A



B



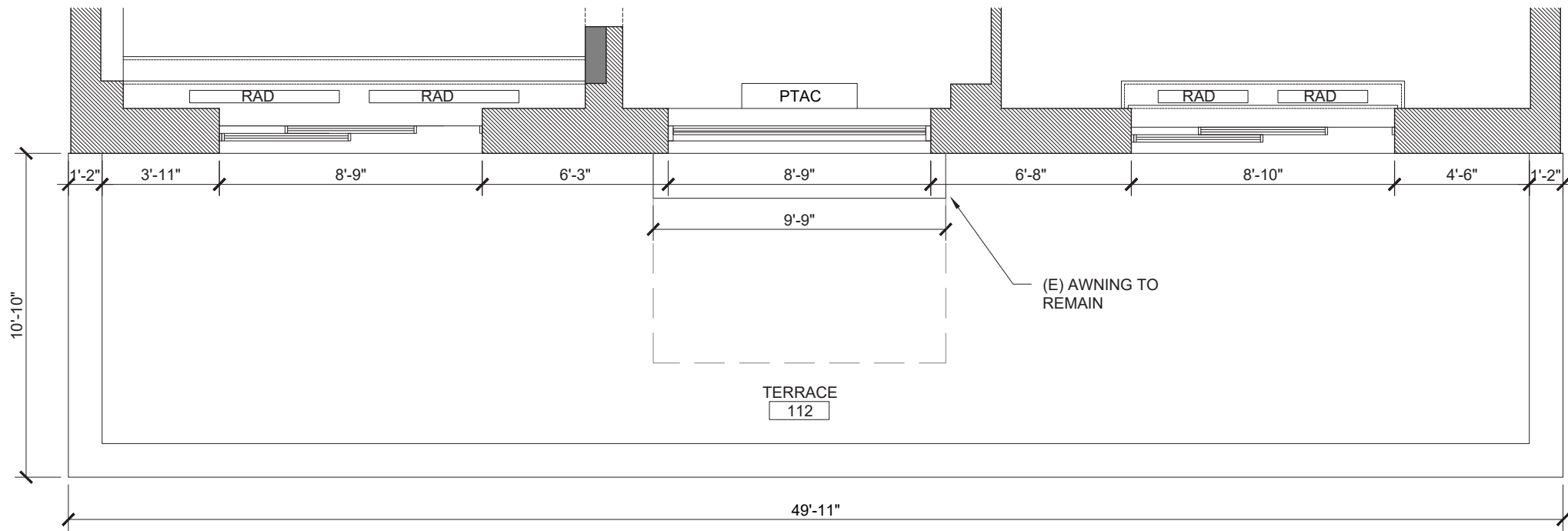
PHOTO TAKEN FROM CORNER OF 62ND ST AND LEXINGTON AVE



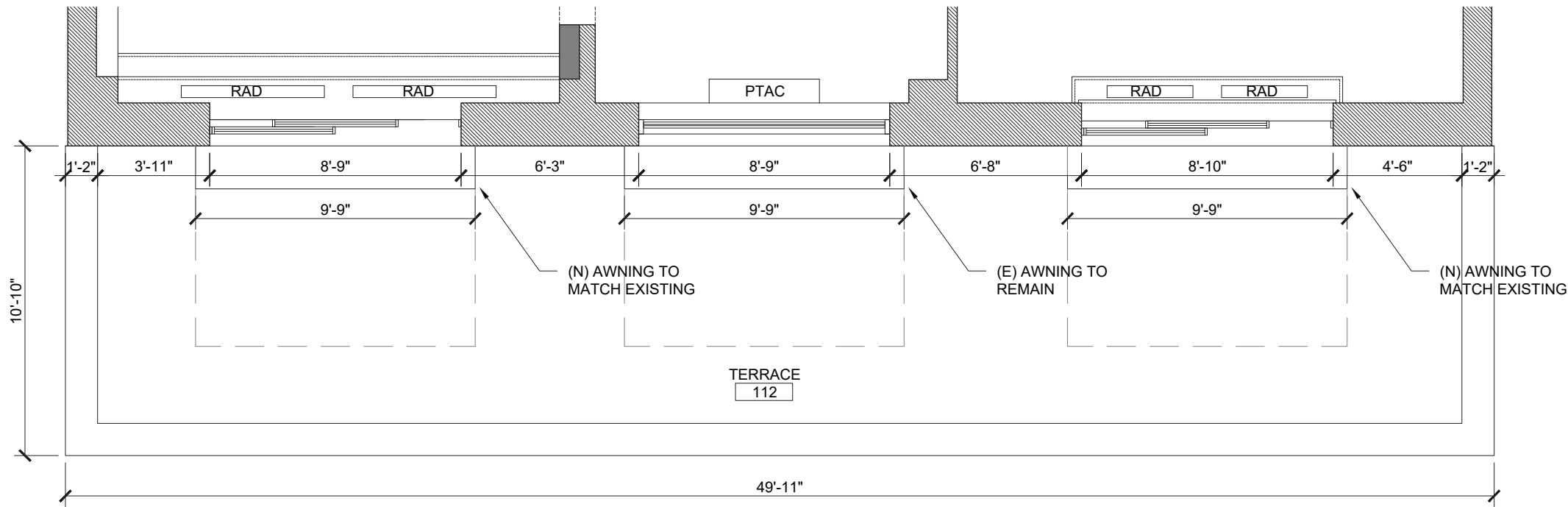


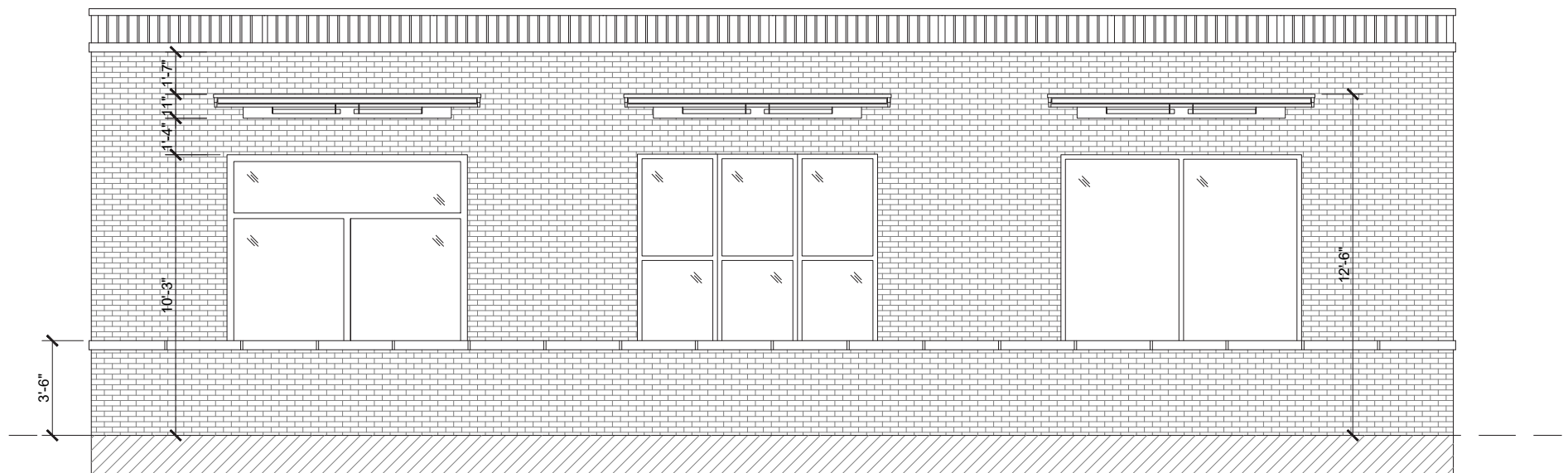
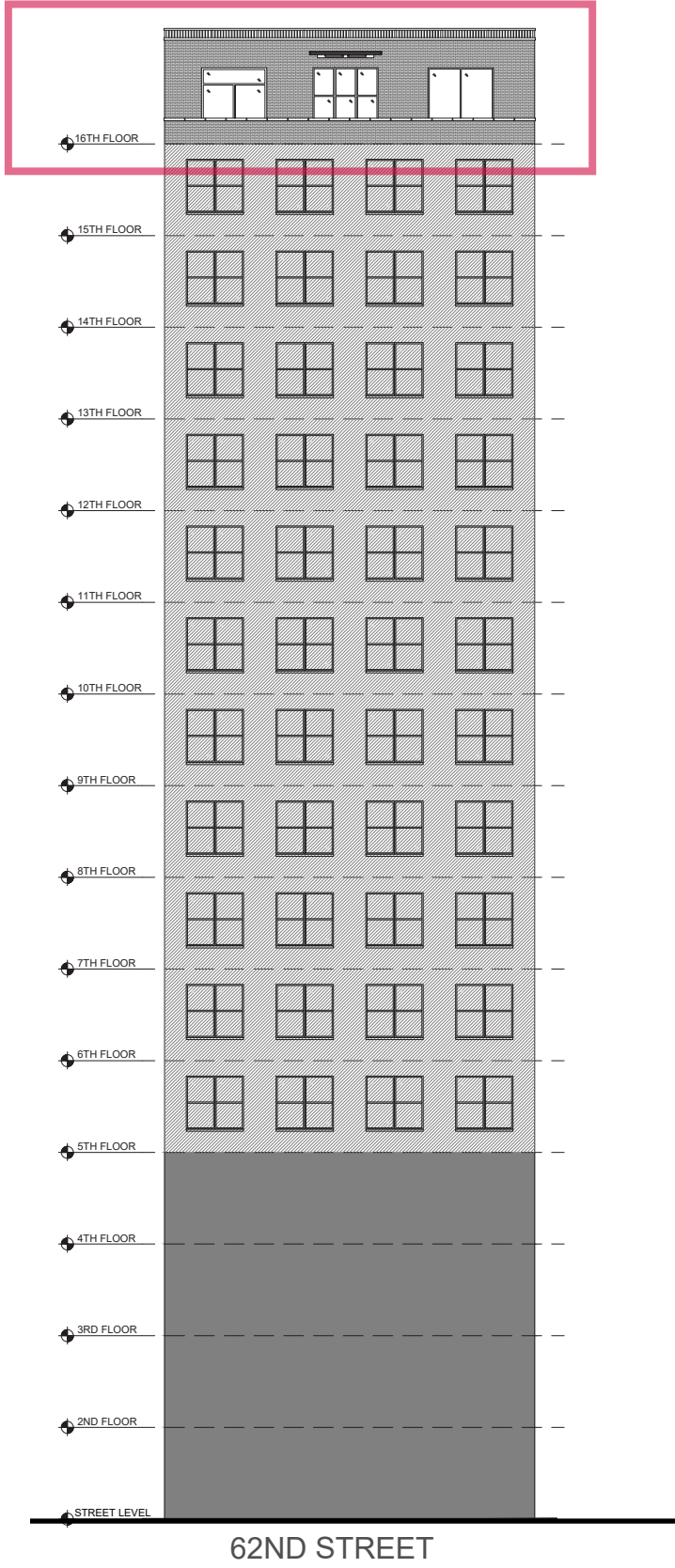


EXISTING PLAN



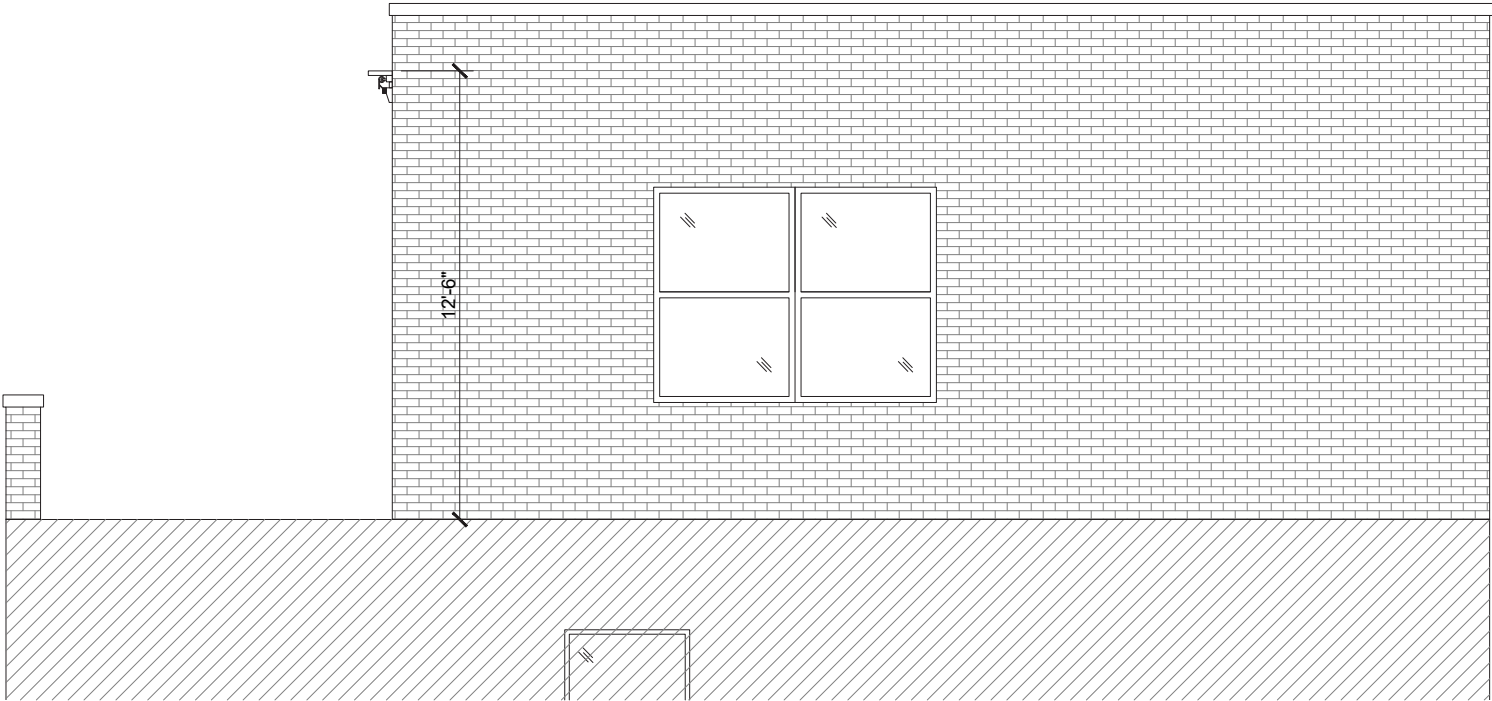
PROPOSED PLAN



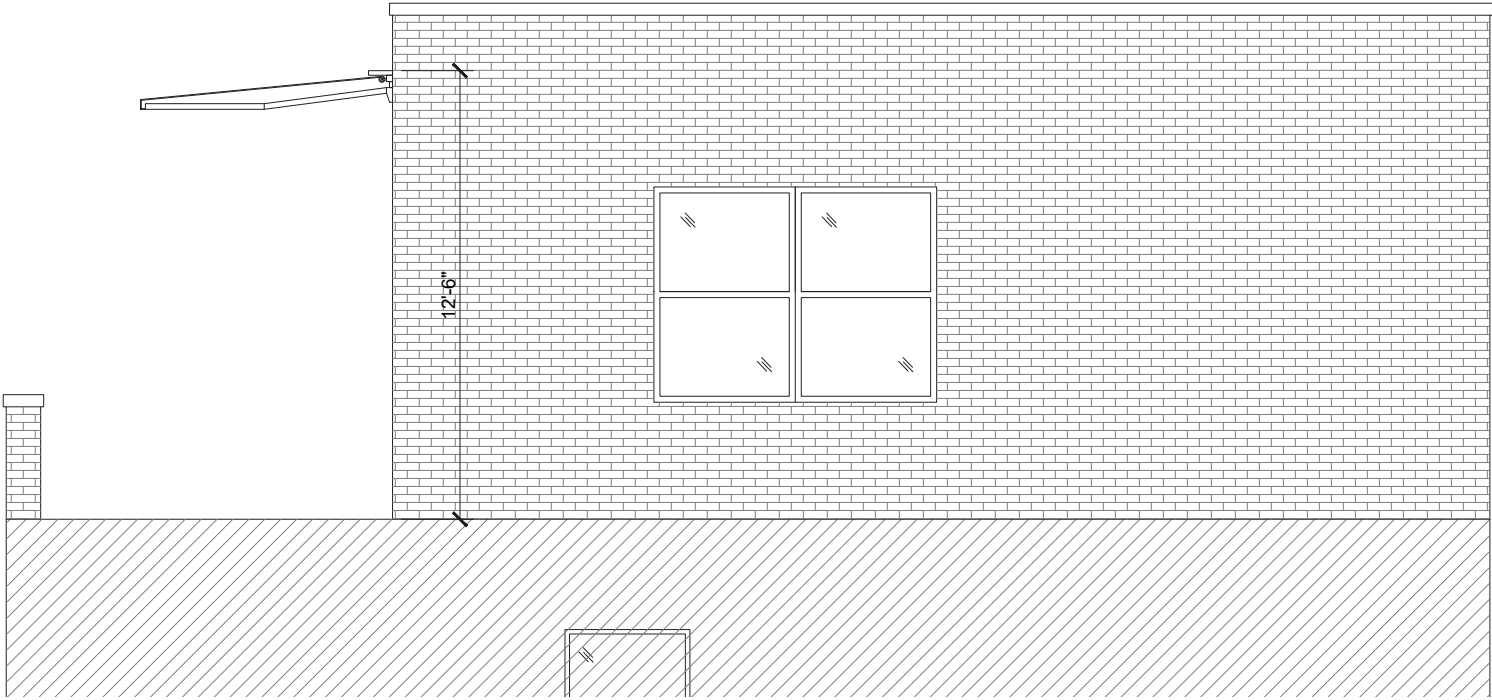


ENLARGED ELEVATION WITH AWNING ADDITION

AWNING RETRACTED



AWNING EXTENDED







EXISTING VIEW FROM 62ND AND LEXINGTON



VIEW WITH PROPOSED AWNING - EXTENDED



VIEW WITH PROPOSED AWNING - RETRACTED