

Landmarks Committee Public Hearing

Manhattan Community Board 8

December 11, 2023

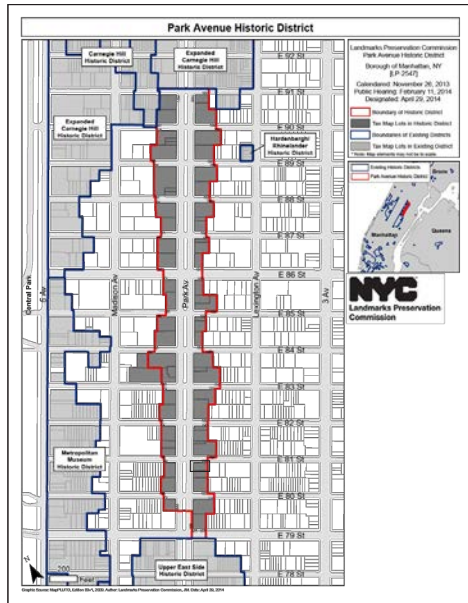
935 Park Avenue - Penthouse Rooftop Terrace
New York, NY, 10028

Park Avenue Historic District: LP - 2547

Block: 1509

Lot: 69

'These terraces lend a garden effect to the general design, which is the case in our Park Avenue project.'



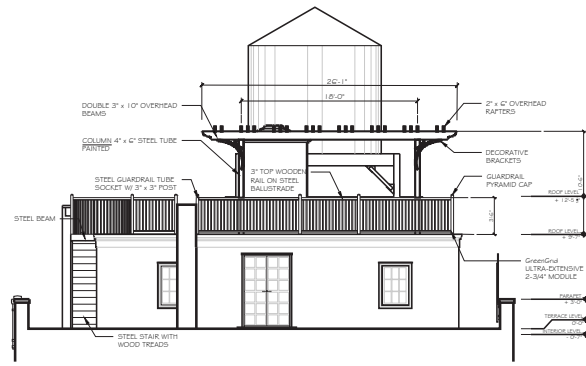
Park Avenue Historic District Map.



1891 Sanborn Map, Project area highlighted.



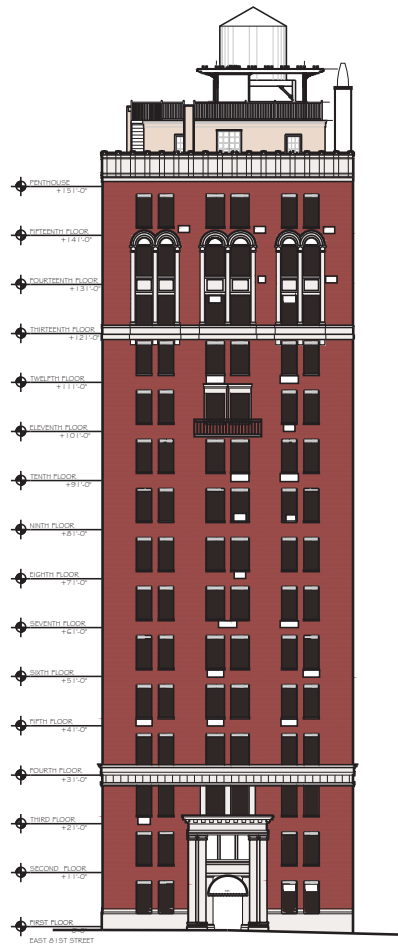
Proposed view of Sunset Terrace from the North East



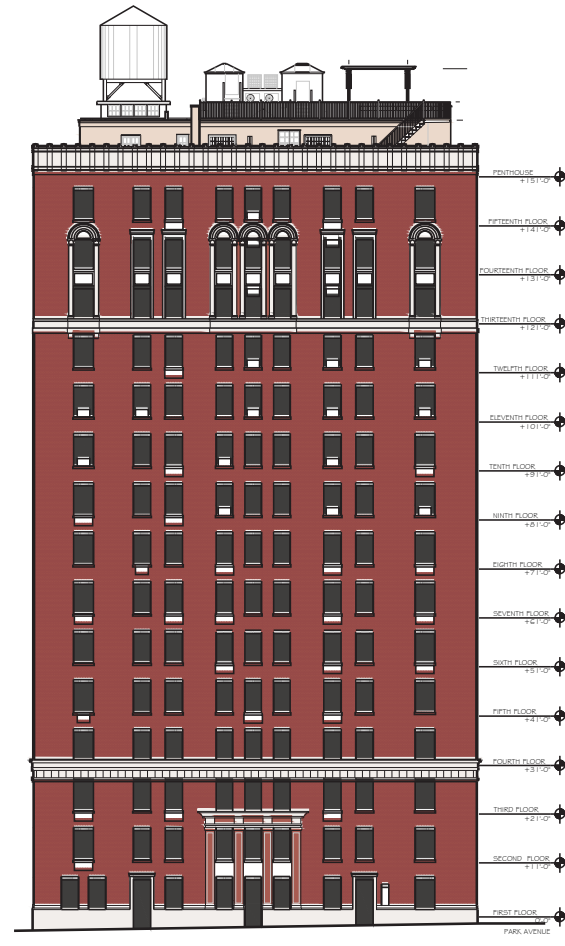
1B PROPOSED EAST FACADE
SCALE: 1/16" = 1'-0"



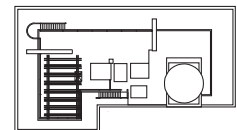
2B PROPOSED NORTH FACADE
SCALE: 1/16" = 1'-0"



1A PROPOSED EAST FACADE
SCALE: 1/32" = 1'-0"



2A PROPOSED NORTH FACADE
SCALE: 1/32" = 1'-0"



KEY PLAN

TITLE Sunset Terrace - LPC Supplemental Information
DATE Full Exterior Elevations Comparison
PROJECT NO. November 22, 2023 1706.02

KATZ RESIDENCE
SUNSET TERRACE
935 PARK AVENUE, NEW YORK, NY 10028

