

THE  
MET

THE METROPOLITAN  
MUSEUM OF ART

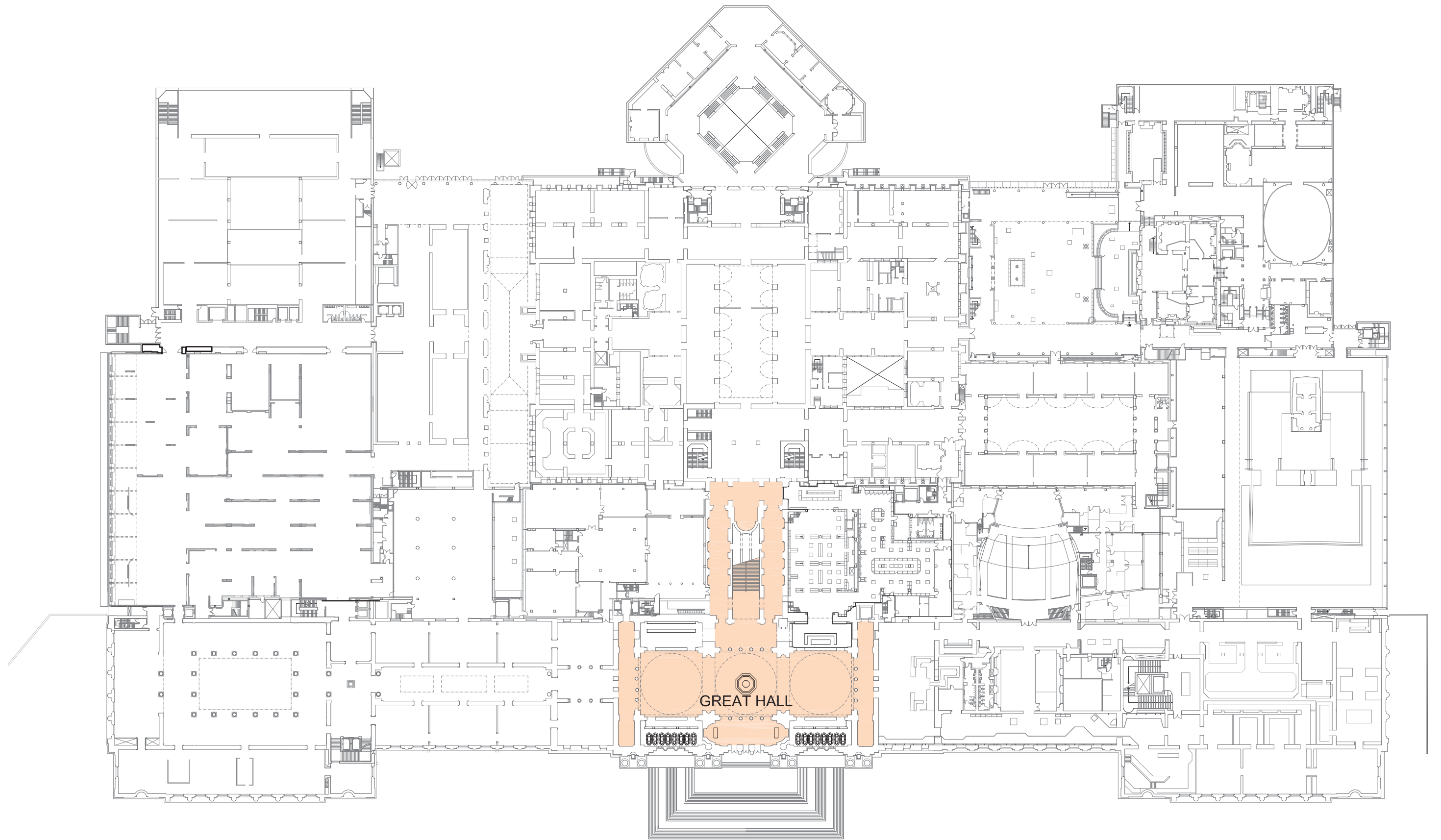
**THE GREAT HALL  
DIGITAL DISPLAY SCREENS**

NYC LANDMARKS  
PRESERVATION COMMISSION  
SUBMISSION

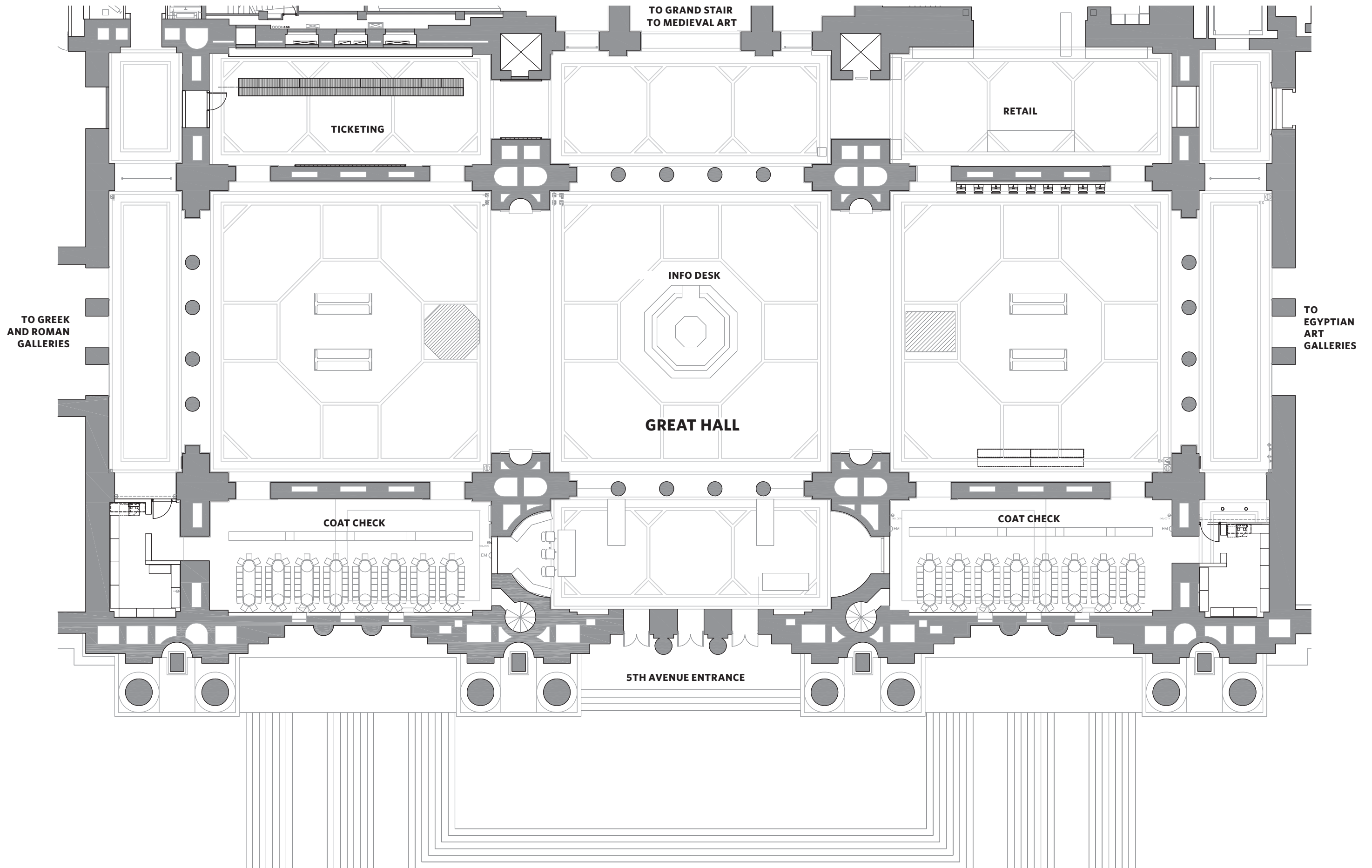
**BEYER  
BLINDER  
BELLE**

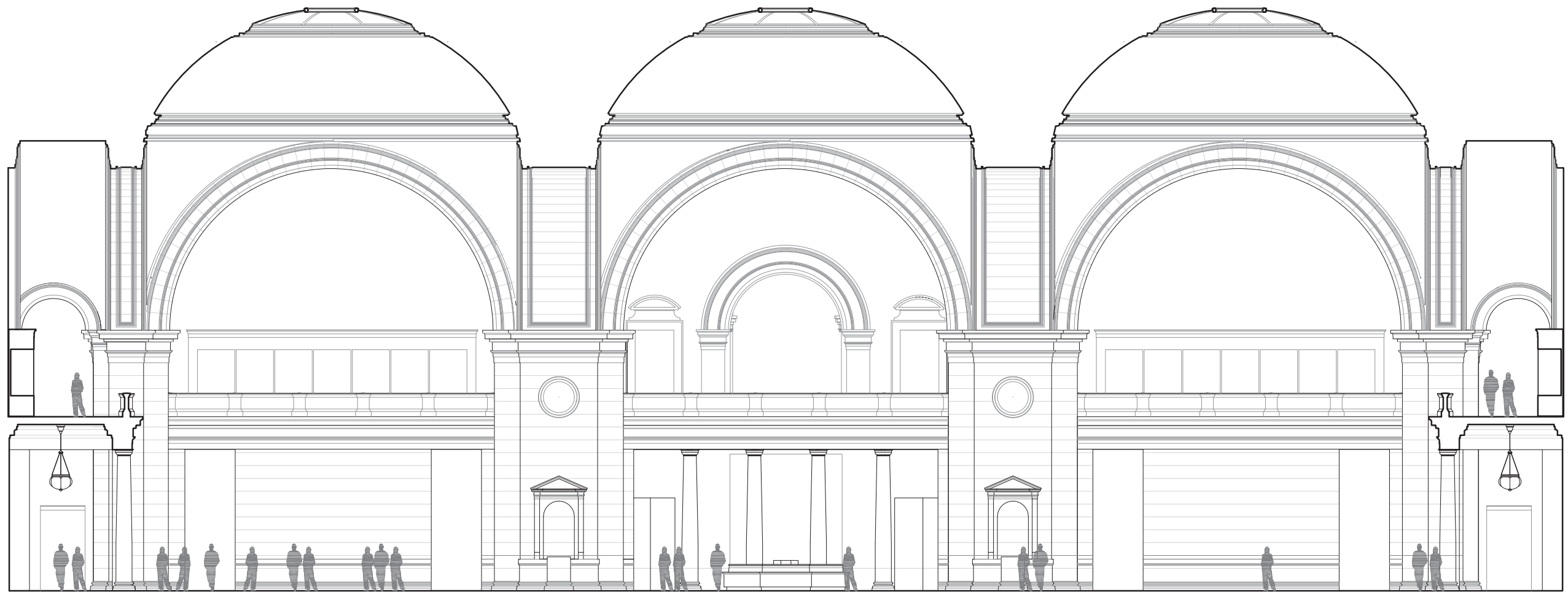
JUNE 21, 2023

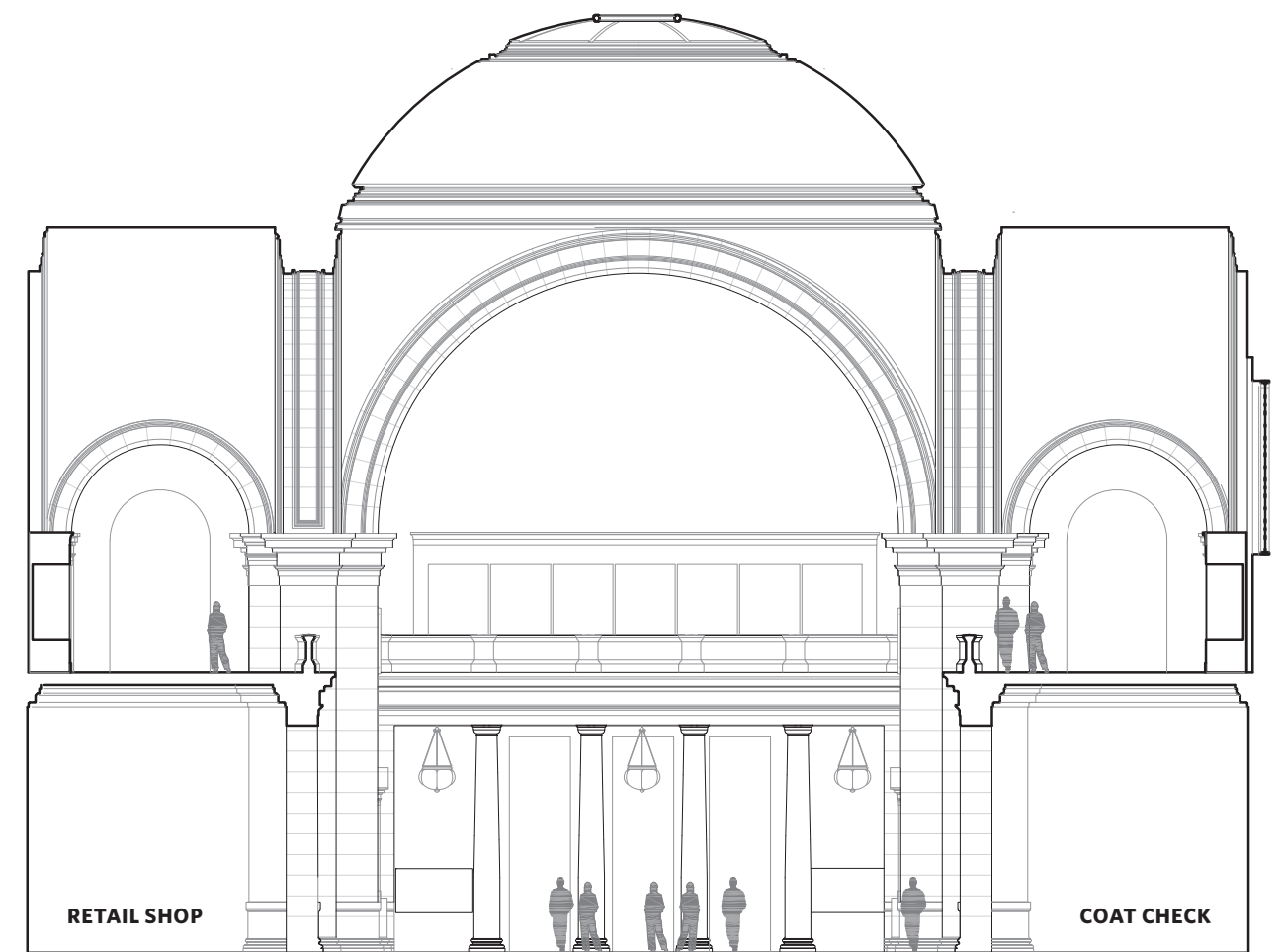
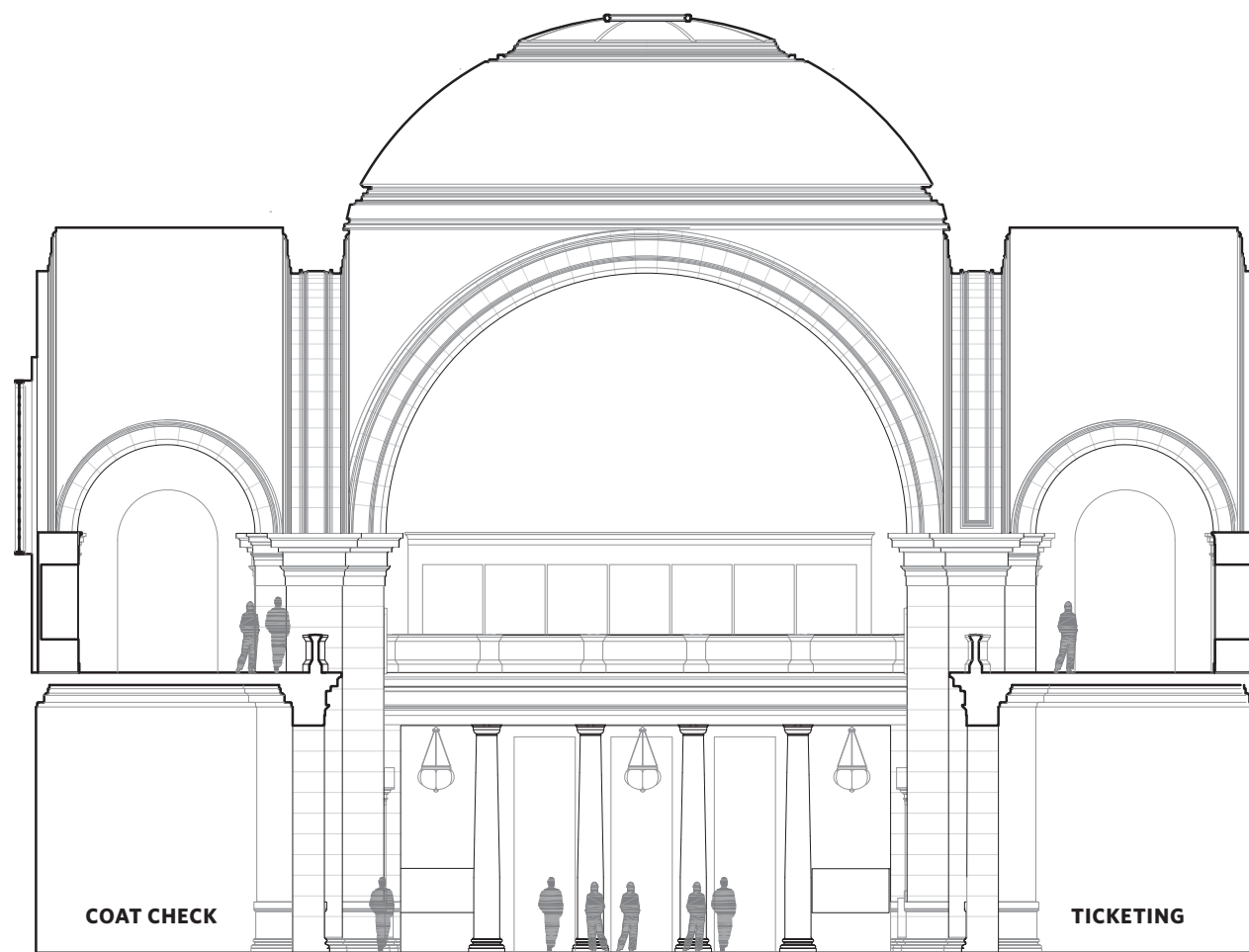
# 1. EXISTING CONDITIONS AND HISTORY



SHADED AREA SHOWS  
EXTENT OF INTERIOR LANDMARK











**GREAT HALL, LOOKING SOUTH, 1902**

The space was used as an entrance hall and a gallery.



**GREAT HALL, LOOKING SOUTH, 1907**

McKim Mead and White altered the original skylights to provide more natural light.





**GREAT HALL, LOOKING NORTH, 1917**

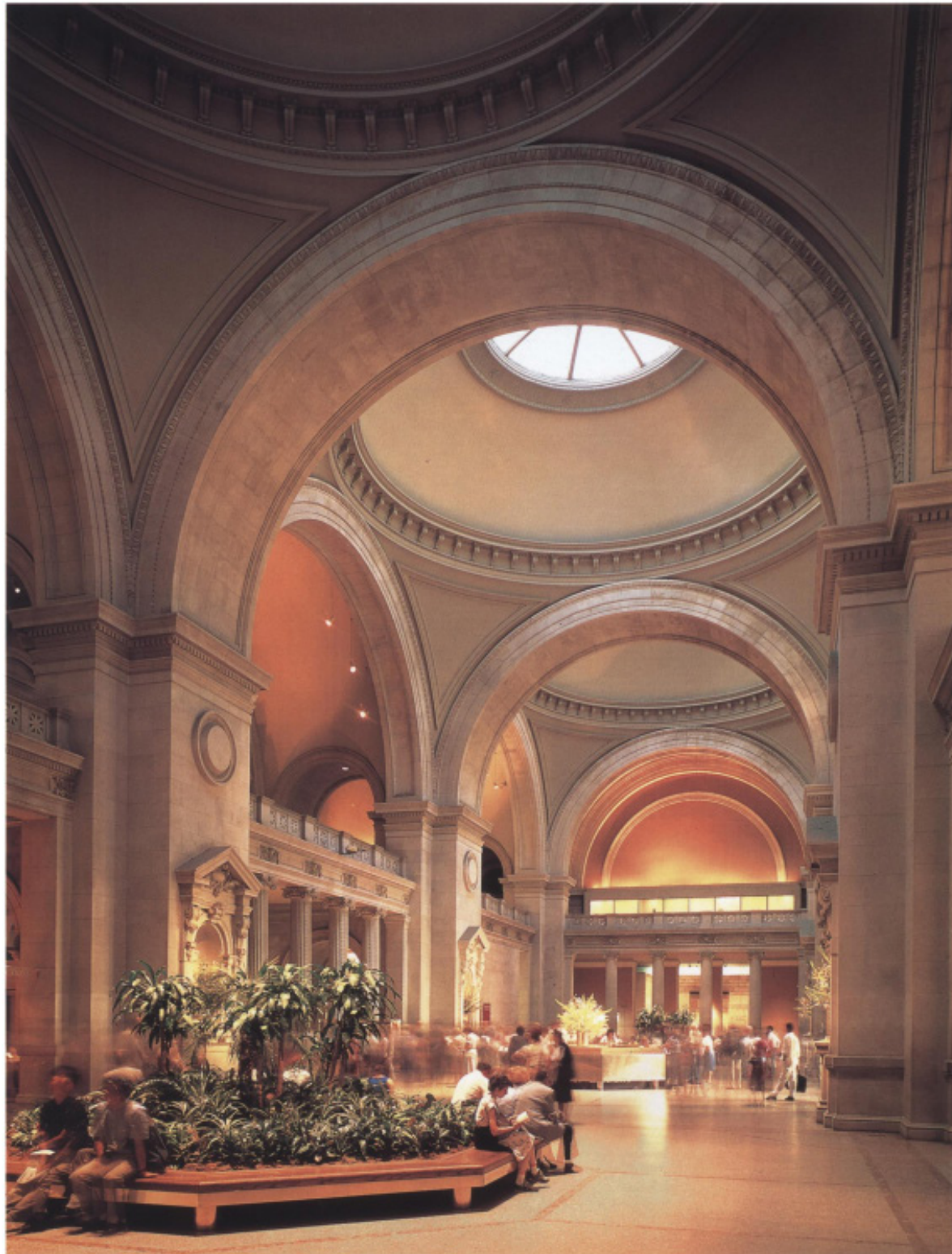
New light fixtures were added.



**GREAT HALL, LOOKING NORTH, C. 1940'S**

The light post fixtures on the balcony parapet have been removed.





**GREAT HALL, LOOKING NORTH, 1992**

Kevin Roche John Dinkeloo Associates' renovation in 1970 for Museum's 100<sup>th</sup> Anniversary, including updating the lighting and adding a bold color palette. The current north and south coatrooms and their doorway openings into the Great hall were created at this time.



**GREAT HALL, LOOKING NORTH, 2023**





**GREAT HALL, NORTH END, 2012**

From the 1970's until 2020, there were three sets of admission ticket desks in the Great Hall, at each of the north, south and west entrances to the galleries.

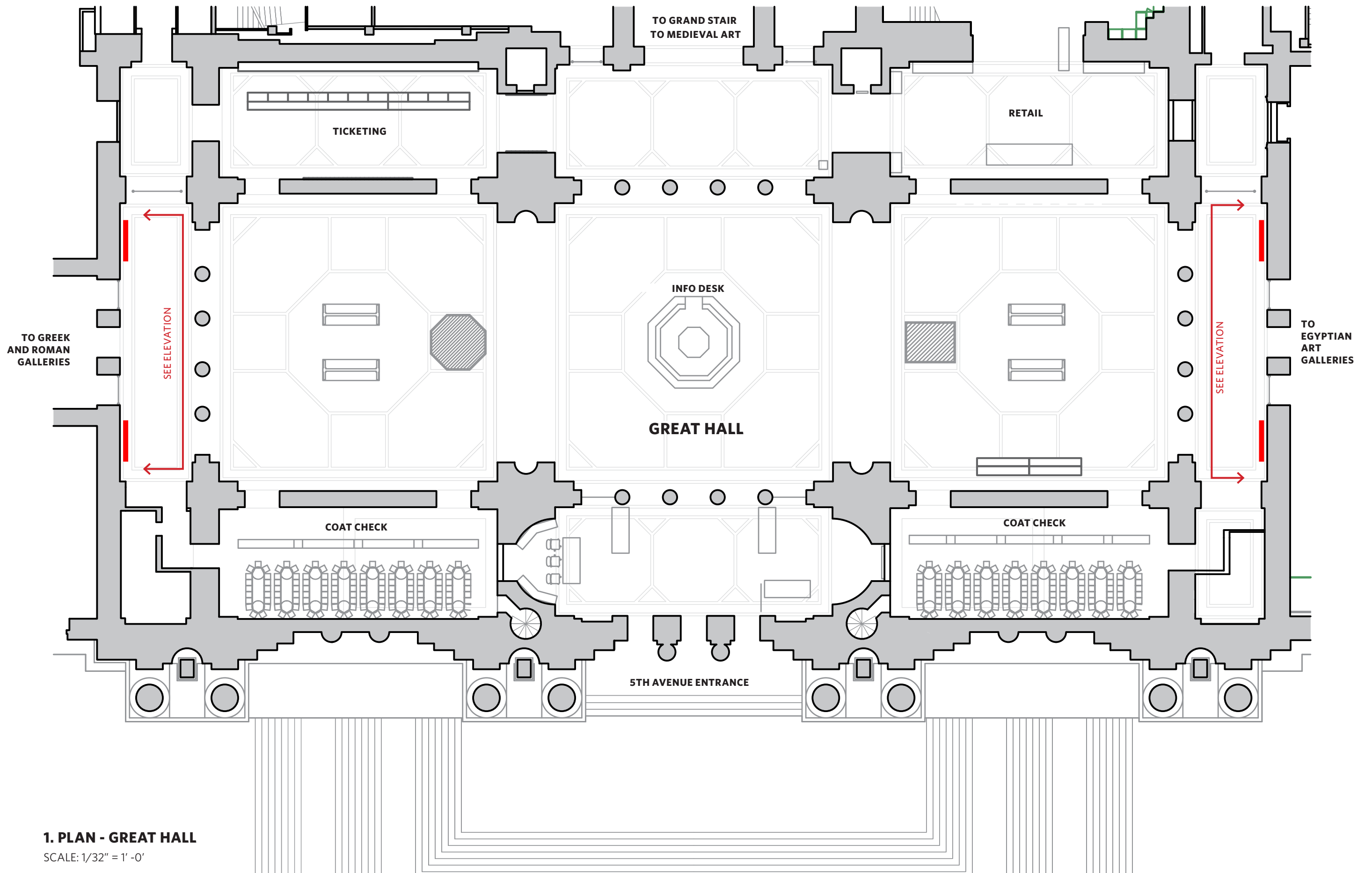


**TICKETING HALL, 2021**

In 2020 the ticket desks were removed and a new ticketing hall was created under the balcony in the southwest quadrant in what had been a retail shop space.

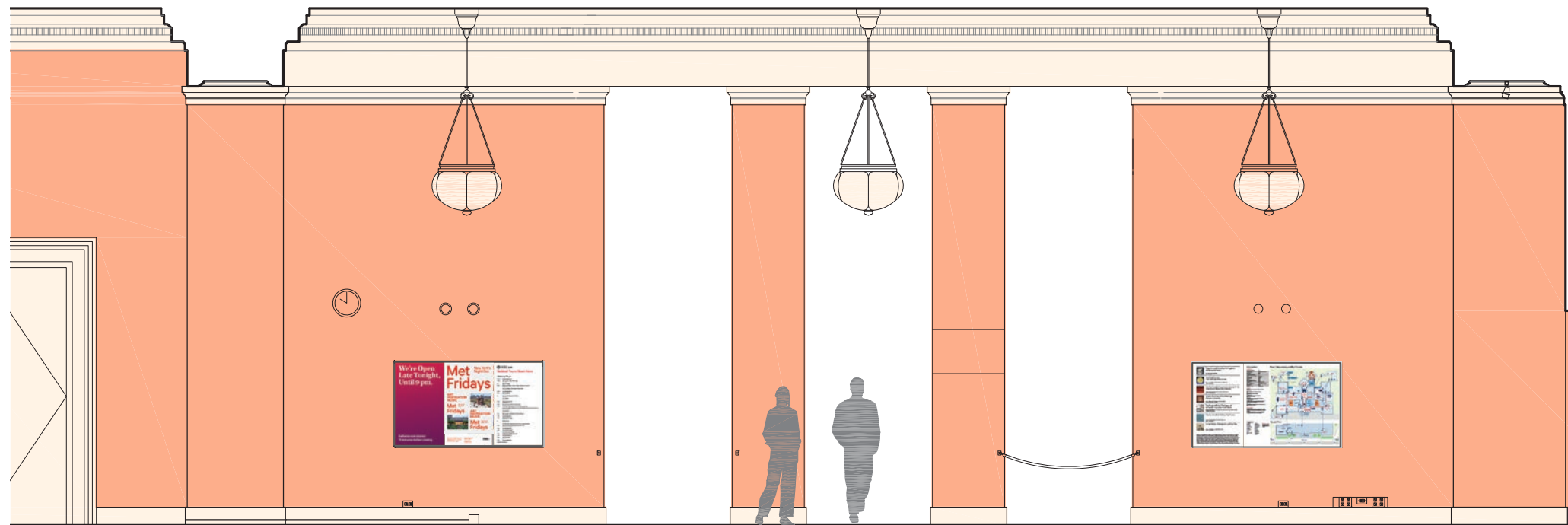
## 2. PROPOSED DESIGN





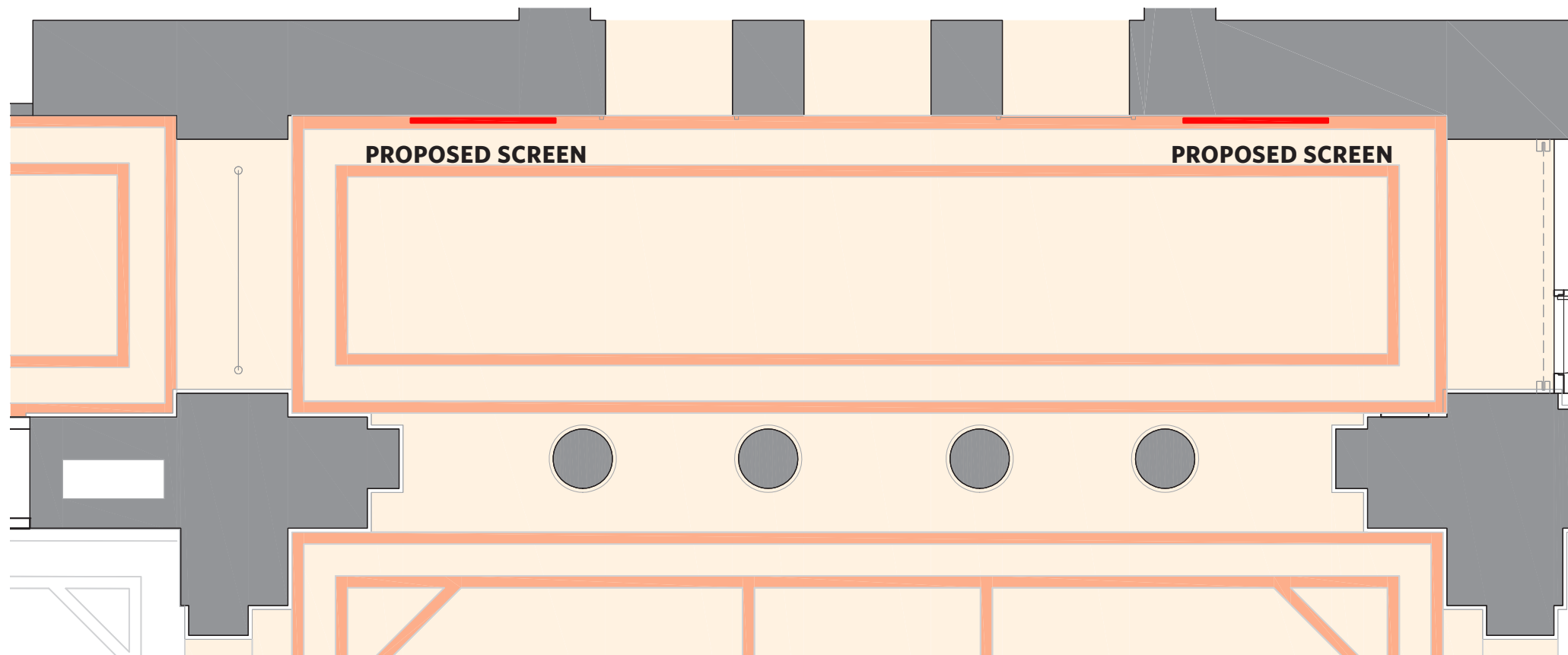
# 1. PLAN - GREAT HALL

SCALE: 1/32" = 1' -0"



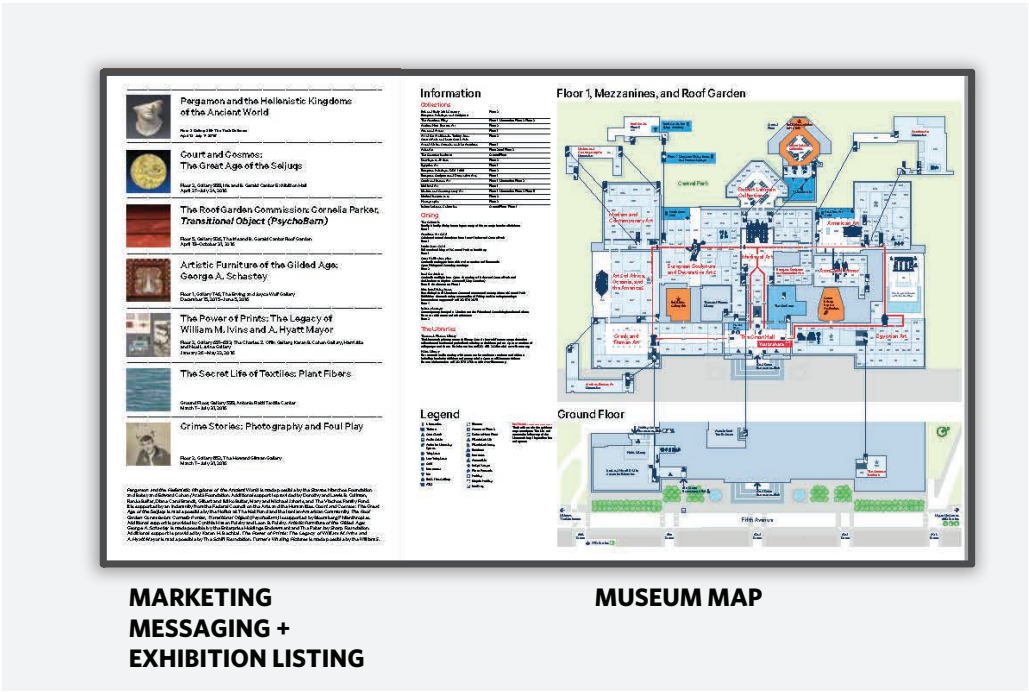
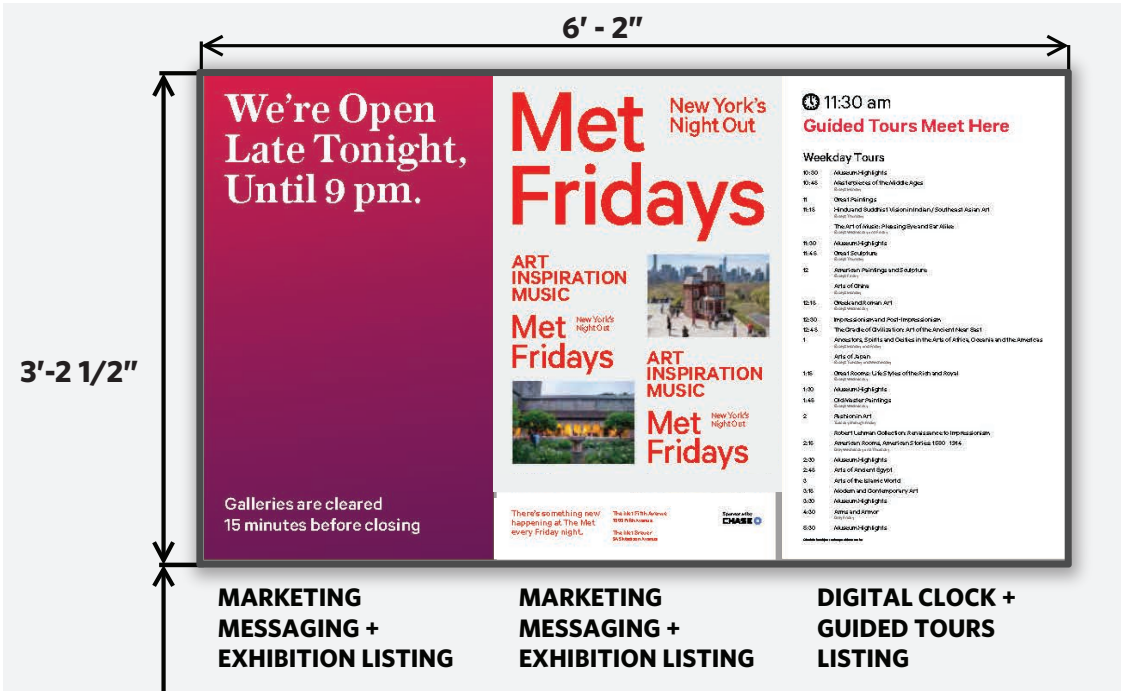
**PROPOSED SCREEN**

**PROPOSED SCREEN**

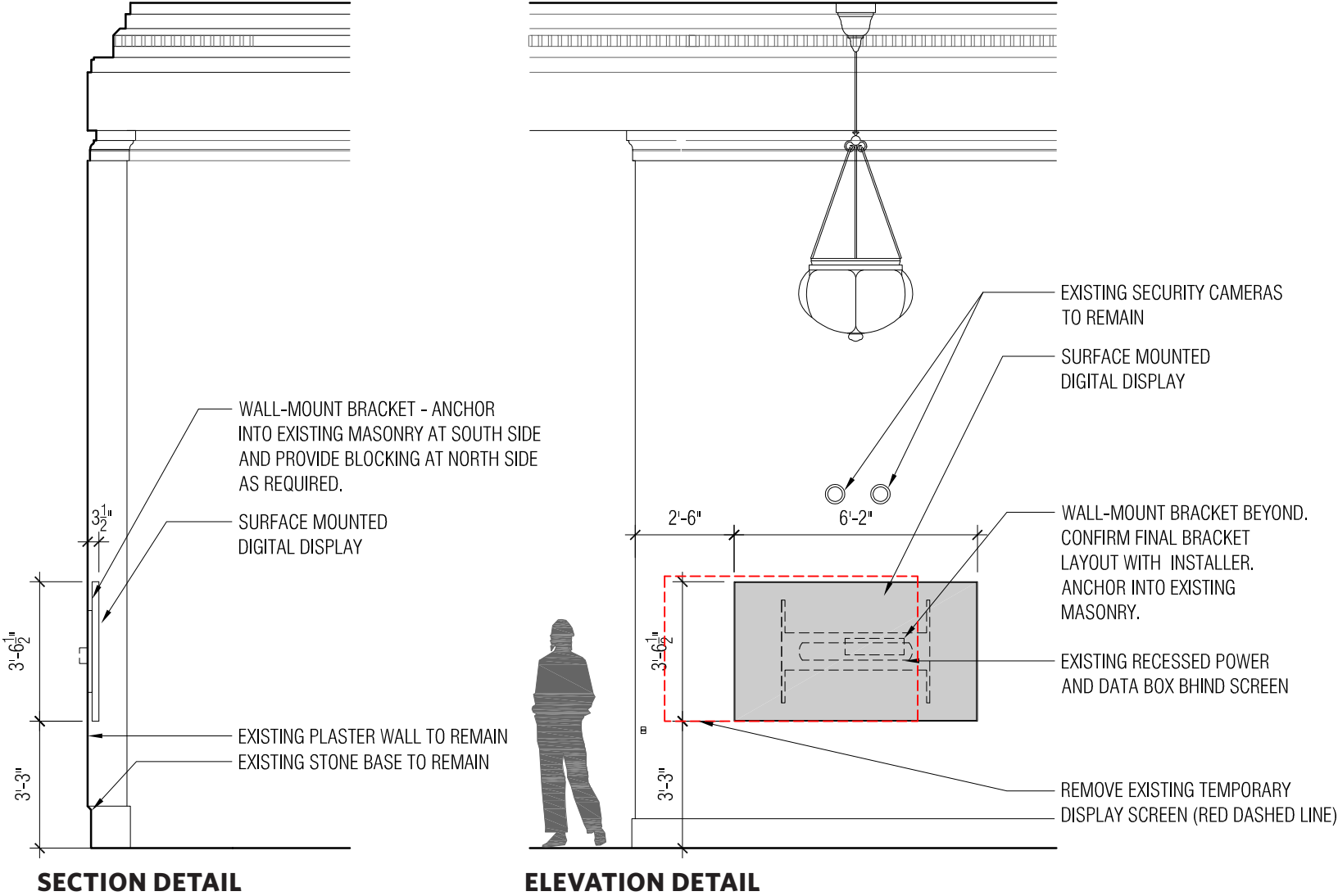


**PROPOSED SCREEN**

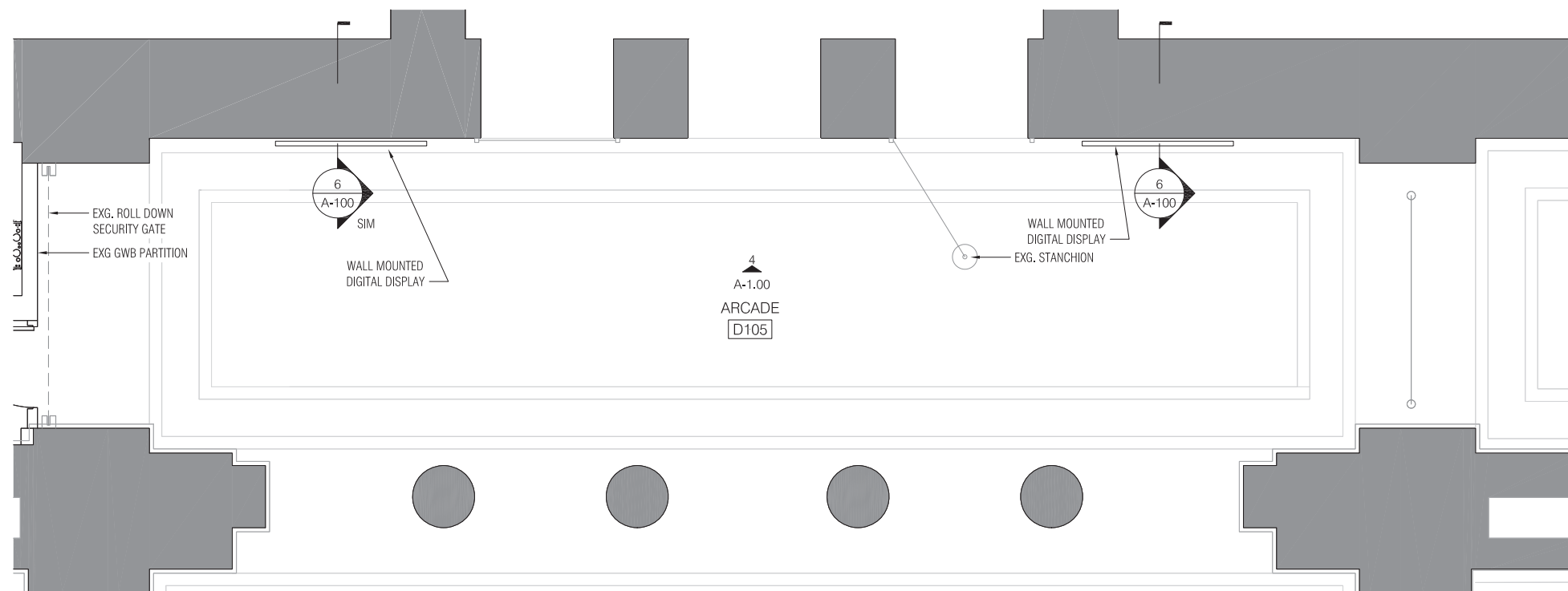
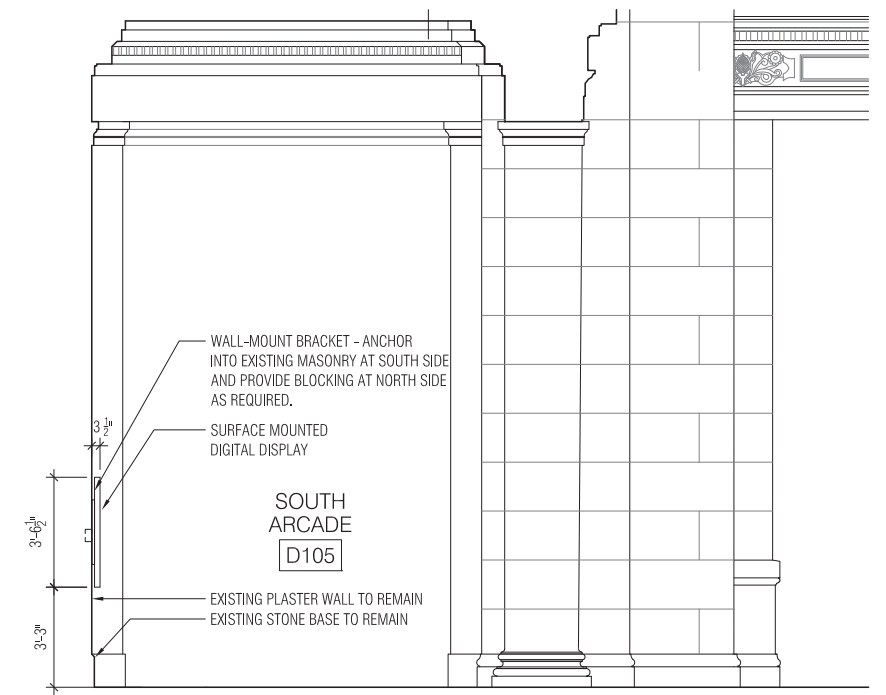
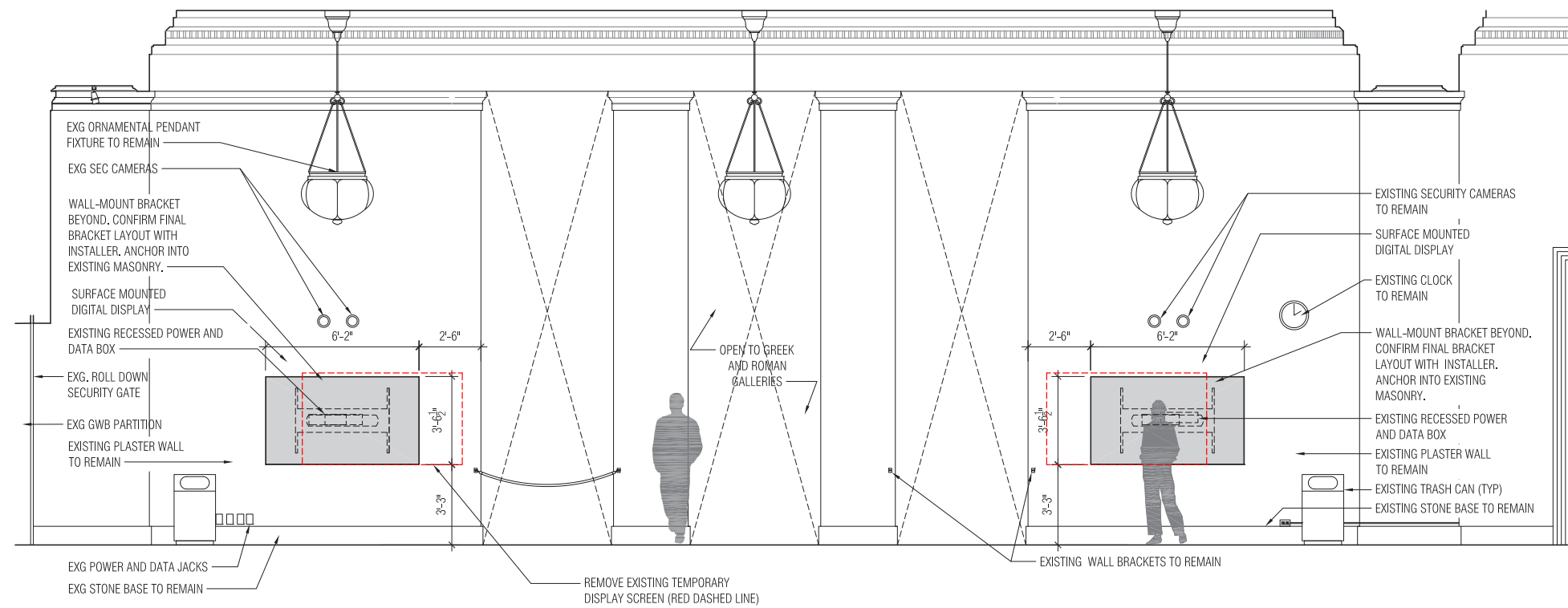
**PROPOSED SCREEN**



SAMPLE DISPLAY SCREEN CONTENT













**PHOTO OF GREAT HALL WITH TEMPORARY DISPLAY SCREEN INSTALLATION UNDER THE FAR BALCONY, LOOKING SOUTH**





PHOTO OF TEMPORARY DISPLAY SCREEN INSTALLATION, LOOKING NORTH

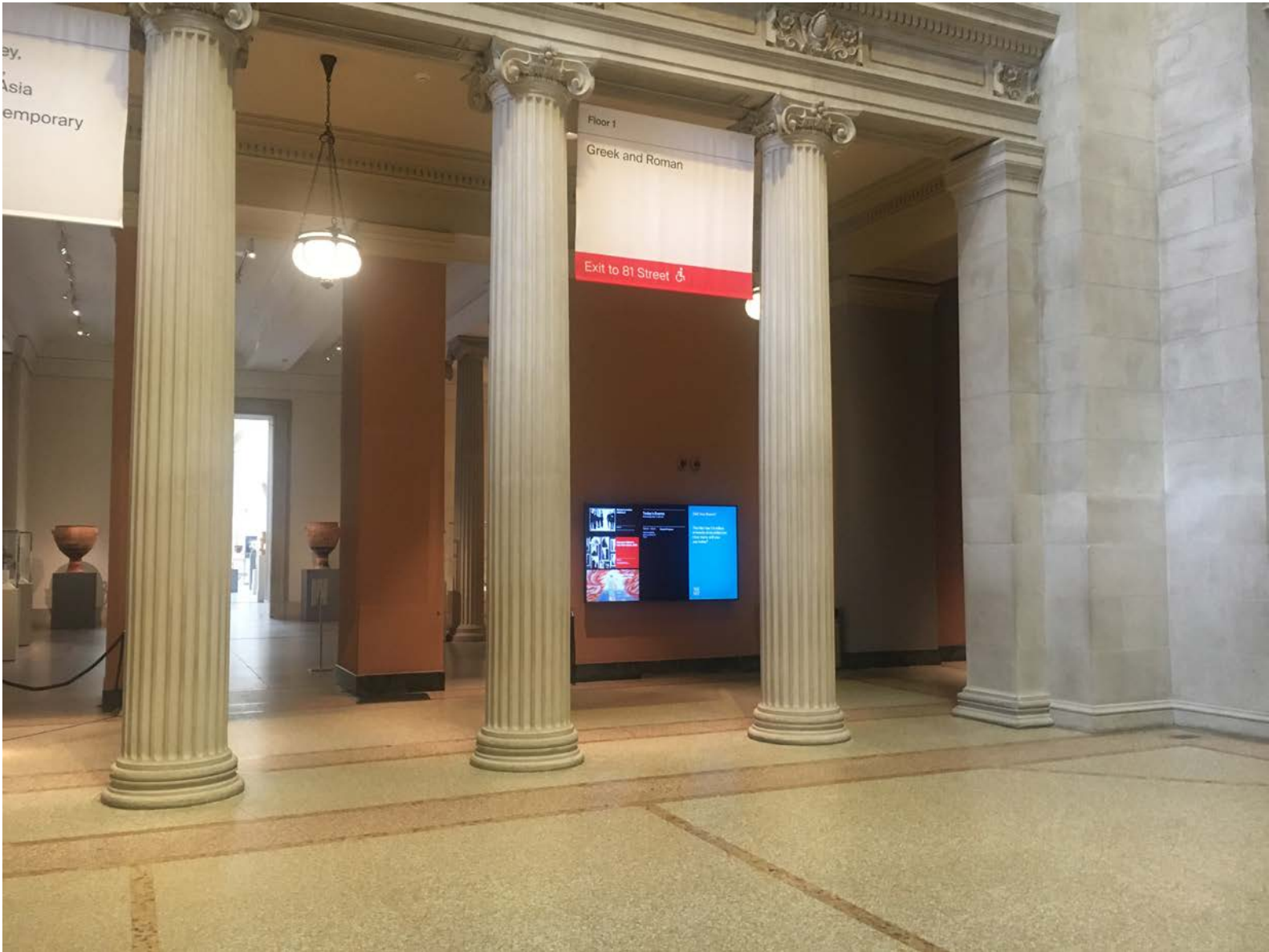


PHOTO OF TEMPORARY DISPLAY SCREEN INSTALLATION, LOOKING SOUTH





PHOTO OF TEMPORARY DISPLAY SCREEN INSTALLATION, LOOKING NORTH



PHOTO OF TEMPORARY DISPLAY SCREEN INSTALLATION AT SOUTH PASSAGE





PHOTO OF EXISTING TEMPORARY DISPLAY SCREEN INSTALLATION, LOOKING NORTH



PHOTO MONTAGE OF PROPOSED DISPLAY SCREEN INSTALLATION, LOOKING NORTH





PHOTO LOOKING INTO TICKETING HALL WITH EXISTING DISPLAY SCREENS



PHOTO OF EXISTING PORTABLE TICKET VENDING MACHINES





SAMSUNG

QMR-B Series UHD Commercial Displays

43"	QM43R-B	65"	QM65R-B
50"	QM50R-B	75"	QM75R-B
55"	QM55R-B	85"	QM85R-B

## Upscale the ordinary to the extraordinary.

### Slim 4K UHD signage with Dynamic Crystal Color

Experience exceptional Ultra HD picture quality with the Samsung QMR-B Dynamic Crystal Color commercial displays. The QMR-B series provides up to a billion colors so you see more of the picture, while true Ultra HD 4K color, 500-nit brightness and a non-glare panel mean messages will be more colorful and detailed than ever before. Additionally, UHD Intelligent Upscaling enhances standard and high-definition content to the best possible picture quality. With a minimalist slim design and a clean cable management solution, the QMR-B series is easy to install into any type of environment. And the QMR-B series' SMART Signage Platform 6.0 features an embedded media player, for easy content management and playback without an external set-back box or PC.



Contact Us: [samsung.com/display](http://samsung.com/display)

#### Key Features



##### Slim and symmetrical design

The QMR-B series' slim depth, narrow bezel and symmetrical design vastly simplify mounting and installation, and allow seamless integration into any environment.



##### Clean cable management

The back of the QMR-B series features stylish grooves that cables can be threaded through, keeping connections out of sight.



##### Bright, 4K, non-glare picture with 24/7 operation

Ultra HD coupled with 500-nit brightness and a non-glare panel delivers true 4K color and clarity, 24/7.



##### Dynamic crystal color

Experience crystal-clear, lifelike color with up to a billion shades of color, 64 times more than conventional UHD displays. See every color in a rainbow or every shade in a spectacular sunset.



##### Intelligent UHD upscaling

UHD upscaling is a unique four-step picture improvement process that enhances the clarity and detail of standard and high-definition content to the best possible picture quality.



##### HDR powered by HDR10+

Experience superior brightness, greater detail in blacks, and authentic color with HDR powered by HDR10+.



##### Powerful, all-in-one solution

The embedded MagicINFO player S6, backed by a powerful Tizen operating system, allows for easy content management and playback without the need for a PC.



##### Cisco Webex certified

The QMR-B series displays have undergone the most stringent of all testing by the Webex Device Business Unit and are fully certified. Combined with Cisco WebEx®, the QMR-B series provides the ultimate conferencing solutions.



##### MagicINFO

Our leading-edge digital signage platform makes content management easier, more flexible and more robust.\*



##### 3-Year commercial warranty

Samsung commercial displays are designed for reliable operation.

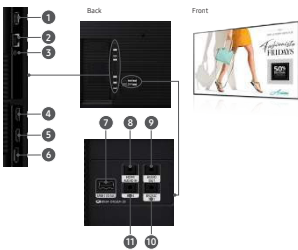
\*License sold separately.

#### Samsung QMR-B Series UHD Commercial Displays

	QM43R-B	QM50R-B	QM55R-B	QM65R-B	QM75R-B	QM85R-B			
Panel	Diagonal Size	Class Measured	43"	50"	55"	65"	75"		
	Type	Edge LED BLU	Edge LED BLU	Edge LED BLU	Edge LED BLU	Edge LED BLU	Edge LED BLU		
	Resolution	UHD (3840 x 2160)	UHD (3840 x 2160)	UHD (3840 x 2160)	UHD (3840 x 2160)	UHD (3840 x 2160)	UHD (3840 x 2160)		
	Brightness (Typ.)	500	500	500	500	500	500		
	Contrast Ratio (Typ.)	4000:1	4000:1	4000:1	4000:1	4000:1	4000:1		
	Viewing Angle (H/V)	178 / 178	178 / 178	178 / 178	178 / 178	178 / 178	178 / 178		
	Response Time (G to G)	8ms (Typ.)	8ms (Typ.)	8ms (Typ.)	8ms (Typ.)	8ms (Typ.)	8ms (Typ.)		
	Display Colors	16.7M (True Display)	16.7M (True Display)	16.7M (True Display)	16.7M (True Display)	16.7M (True Display)	16.7M (True Display)		
	Color Gamut	1.07B (Dedicated 10 Bit)	1.07B (Dedicated 10 Bit)	1.07B (Dedicated 10 Bit)	1.07B (Dedicated 10 Bit)	1.07B (Dedicated 10 Bit)	1.07B (Dedicated 10 Bit)		
	Operation Hour	24/7	24/7	24/7	24/7	24/7	24/7		
Sound	Panel Orientation	Landscape / Portrait	Landscape / Portrait	Landscape / Portrait	Landscape / Portrait	Landscape / Portrait	Landscape / Portrait		
	Speaker Type	Built-in Speaker (10W + 10W)	Built-in Speaker (10W + 10W)	Built-in Speaker (10W + 10W)	Built-in Speaker (10W + 10W)	Built-in Speaker (10W + 10W)	Built-in Speaker (10W + 10W)		
	IPSX Rating	Yes	Yes	Yes	Yes	Yes	Yes		
	Non-Glare Panel	Yes	Yes	Yes	Yes	Yes	Yes		
	Cisco Webex Compatible	Yes	Yes	Yes	Yes	Yes	Yes		
	Connectivity	RGB	DisplayPort 1.2 (1)	DisplayPort 1.2 (1)	DisplayPort 1.2 (1)	DisplayPort 1.2 (1)	DisplayPort 1.2 (1)		
		VIDEO	HDMI 2.0 (2)	HDMI 2.0 (2)	HDMI 2.0 (2)	HDMI 2.0 (2)	HDMI 2.0 (2)		
		HDCP2.2	HDCP2.2	HDCP2.2	HDCP2.2	HDCP2.2	HDCP2.2		
		AUDIO	Stereo Mini Jack, HDMI / Audio (Common)	Stereo Mini Jack, HDMI / Audio (Common)	Stereo Mini Jack, HDMI / Audio (Common)	Stereo Mini Jack, HDMI / Audio (Common)	Stereo Mini Jack, HDMI / Audio (Common)		
		USB	USB 2.0 x 2	USB 2.0 x 2	USB 2.0 x 2	USB 2.0 x 2	USB 2.0 x 2		
Input		RGB	N/A	N/A	N/A	N/A	N/A		
		Audio	Stereo Mini Jack	Stereo Mini Jack	Stereo Mini Jack	Stereo Mini Jack	Stereo Mini Jack		
		External Control	RS232C (In / Out) thru Stereo Jack, RJ45	RS232C (In / Out) thru Stereo Jack, RJ45	RS232C (In / Out) thru Stereo Jack, RJ45	RS232C (In / Out) thru Stereo Jack, RJ45	RS232C (In / Out) thru Stereo Jack, RJ45		
		External Sensor	IR	IR	IR	IR	IR		
		Wi-Fi	Yes (2.4 GHz Only)	Yes (2.4 GHz Only)	Yes (2.4 GHz Only)	Yes (2.4 GHz Only)	Yes (2.4 GHz Only)		
	Power	Bluetooth	No	No	No	No	No		
		Type	Internal	Internal	Internal	Internal	Internal		
		Power Supply	AC100 ~ 240V, 50 / 60 Hz	AC100 ~ 240V, 50 / 60 Hz	AC100 ~ 240V, 50 / 60 Hz	AC100 ~ 240V, 50 / 60 Hz	AC100 ~ 240V, 50 / 60 Hz		
		Max. Typical (W)	110 / 74	170 / 117	147 / 108	231 / 178	508 / 377		
		Power Consumption	Rating (W)	130	193	210	280	563	
Mechanical		BTU (Max)	5814	8476	6189	7887	10653		
		Set	0.5	0.5	0.5	0.5	0.5		
		Dimensions (mm / inch)	963.1 x 557.7 x 48.5 / 38.09 x 21.96 x 1.91	1174.4 x 645.9 x 45.7 / 46.25 x 25.37 x 1.82	1413.9 x 670.9 x 46.3 / 55.67 x 26.41 x 1.82	1681.1 x 960.9 x 49.7 / 66.59 x 37.83 x 1.96	1977.8 x 1088.8 x 56.7 / 78.22 x 42.55 x 2.23		
		Weight (kg / lb)	Set	10.5 / 23.15	15.3 / 33.75	17.3 / 38.15	19.3 / 42.57	21.3 / 46.97	
		Package	126.7 x 784.1 x 51.18 / 5.01 x 30.87 x 2.01	140.2 x 338.1 x 1.82 / 5.52 x 13.31 x 0.72	161.1 x 371.1 x 1.82 / 6.34 x 14.57 x 0.72	186.9 x 438.1 x 1.96 / 7.35 x 17.25 x 0.77	218.2 x 488.1 x 2.23 / 8.59 x 19.14 x 0.88		
	Power Supply	Weight (kg / lb)	Set	10.5 / 23.15	15.3 / 33.75	17.3 / 38.15	19.3 / 42.57	21.3 / 46.97	
		VESA Mount	Set	200 x 200	200 x 200	200 x 200	200 x 200	200 x 200	
		Bezel Width (Top / Sides / Bottom) (mm)	9.2mm (T/S), 11.2mm (B)	9.2mm (T/S), 11.2mm (B)	9.2mm (T/S), 11.2mm (B)	9.2mm (T/S), 11.2mm (B)	11.5mm (T/S), 12.5mm (B)	10.9mm (T/S), 12.9mm (B)	
		Operating Temperature / Humidity	0°C ~ 40°C / 10% ~ 80%	0°C ~ 40°C / 10% ~ 80%	0°C ~ 40°C / 10% ~ 80%	0°C ~ 40°C / 10% ~ 80%	0°C ~ 40°C / 10% ~ 80%	0°C ~ 40°C / 10% ~ 80%	
		Features	Key	UHD Single Display, Slim and Light-Signage with Built-in Speaker with Magic Wall, Video Wall, Daily Chain (HDCP 2.2: 4EA, HDCP 1.4: 7EA), IPSX Rating, Wi-Fi	UHD Single Display, Slim and Light-Signage with Built-in Speaker with Magic Wall, Video Wall, Daily Chain (HDCP 2.2: 4EA, HDCP 1.4: 7EA), IPSX Rating, Wi-Fi	UHD Single Display, Slim and Light-Signage with Built-in Speaker with Magic Wall, Video Wall, Daily Chain (HDCP 2.2: 4EA, HDCP 1.4: 7EA), IPSX Rating, Wi-Fi	UHD Single Display, Slim and Light-Signage with Built-in Speaker with Magic Wall, Video Wall, Daily Chain (HDCP 2.2: 4EA, HDCP 1.4: 7EA), IPSX Rating, Wi-Fi	UHD Single Display, Slim and Light-Signage with Built-in Speaker with Magic Wall, Video Wall, Daily Chain (HDCP 2.2: 4EA, HDCP 1.4: 7EA), IPSX Rating, Wi-Fi	UHD Single Display, Slim and Light-Signage with Built-in Speaker with Magic Wall, Video Wall, Daily Chain (HDCP 2.2: 4EA, HDCP 1.4: 7EA), IPSX Rating, Wi-Fi
Special			Hardware	Temperature Sensor, Pivot Display, Clock Battery (168 Hrs. Clock Keeping), Built-in Speaker (10W x 2), Video Wall, Daily Chain (HDCP 2.2: 4EA, HDCP 1.4: 7EA), IPSX Rating, Wi-Fi	Temperature Sensor, Pivot Display, Clock Battery (168 Hrs. Clock Keeping), Built-in Speaker (10W x 2), Video Wall, Daily Chain (HDCP 2.2: 4EA, HDCP 1.4: 7EA), IPSX Rating, Wi-Fi	Temperature Sensor, Pivot Display, Clock Battery (168 Hrs. Clock Keeping), Built-in Speaker (10W x 2), Video Wall, Daily Chain (HDCP 2.2: 4EA, HDCP 1.4: 7EA), IPSX Rating, Wi-Fi	Temperature Sensor, Pivot Display, Clock Battery (168 Hrs. Clock Keeping), Built-in Speaker (10W x 2), Video Wall, Daily Chain (HDCP 2.2: 4EA, HDCP 1.4: 7EA), IPSX Rating, Wi-Fi	Temperature Sensor, Pivot Display, Clock Battery (168 Hrs. Clock Keeping), Built-in Speaker (10W x 2), Video Wall, Daily Chain (HDCP 2.2: 4EA, HDCP 1.4: 7EA), IPSX Rating, Wi-Fi	
Processor			On-Chip Cache Memory	On-Chip Cache Memory	On-Chip Cache Memory	On-Chip Cache Memory	On-Chip Cache Memory	On-Chip Cache Memory	
Internal Player (Embedded Hardware)			Graphics	Graphics	Graphics	Graphics	Graphics	Graphics	
Certification			EMC	Class B	ENERGY STAR 8.0, EPEAT	Class B	ENERGY STAR 8.0, EPEAT	Class B	ENERGY STAR 8.0, EPEAT
			Environment	Class B	ENERGY STAR 8.0, EPEAT	Class B	ENERGY STAR 8.0, EPEAT	Class B	ENERGY STAR 8.0, EPEAT
	Accessories		Included	STN-L435SF	STN-L435SF	STN-L435SF	STN-L435SF	STN-L435SF	
	Optional		Stand Mount	WMN4070SE (Landscape Only)	WMN4070SE (Landscape Only)	WMN4070SE (Landscape Only)	WMN4070SE (Landscape Only)	WMN4070SE (Landscape Only)	
	Specialty		CM4400X	CM4400X	CM4400X	CM4400X	CM4400X	CM4400X	
	Warranty		3 Years (Parts/Labor/Backlight)	3 Years (Parts/Labor/Backlight)	3 Years (Parts/Labor/Backlight)	3 Years (Parts/Labor/Backlight)	3 Years (Parts/Labor/Backlight)	3 Years (Parts/Labor/Backlight)	

#### Connectivity

- USB 1.0(A)
- RJ45
- RS232C In
- HDMI In 1 (ARC)
- HDMI In 2
- DP In
- USB 2.0 (0.5A)
- HDMI Audio In
- Audio Out
- RS232C Out
- IR In



#### ProCare

##### Samsung ProCare Indoor Display Solutions

- Fast Track with White Glove Next Business Day\* Service
  - Includes tech-assisted exchange of display: Technician removes original unit, installs replacement and ships non-working unit to Samsung
- Fast Track Next Business Day Exchange
  - Return shipping label provided, customer returns original unit in new unit's box
- Available on sizes 32"-85"
- 3-5 year terms available

Learn More [samsung.com/display](http://samsung.com/display) [samsung.com/business](http://samsung.com/business) [insights.samsung.com](http://insights.samsung.com)

Product Support 1-866-SAM4BIZ

Follow Us [youtube.com/samsungbizusa](https://www.youtube.com/samsungbizusa) [@SamsungDisplay](https://twitter.com/SamsungDisplay) [@SamsungBizUSA](https://www.facebook.com/SamsungBizUSA) [samsungbusinessusa](https://www.linkedin.com/company/samsungbusinessusa)

SAMSUNG

©2021 Samsung Electronics America, Inc. Samsung is a registered mark of Samsung Electronics Corp., Ltd. Specifications and design are subject to change without notice. Non-metric weights and measurements are approximate. Simulated screen images. All brand, product, service names and logos are trademarks and/or registered trademarks of their respective manufacturers and companies. See [samsung.com](http://samsung.com) for detailed information. Printed in USA. DISGIG-QM48B-SPEC-NOV21T

\*For Next Business Day exchange and installation, calls must be received by 3 p.m. eastern time



## P-Series Low-Profile Flat Mount for Flat Panel Displays

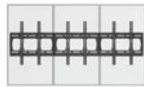
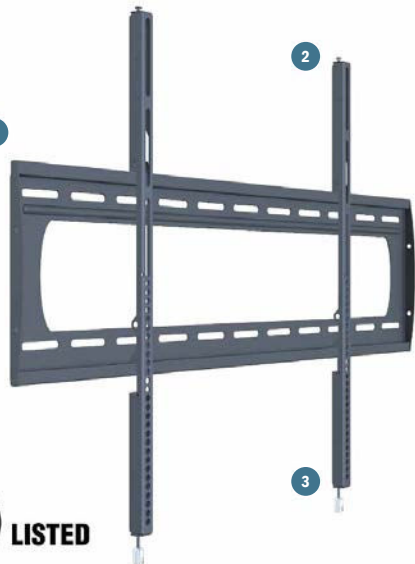
ITEMS: P2642F, P4263F, P5080F, P4263FP

WEIGHT CAPACITY:  
130 - 300 LB / 59 - 136 KG.

#### FEATURES

- Holds flat panel displays less than 1 inch from the wall
- Post-installation leveling system
- Lock-It™ security barrel included

- Built-in lateral shift
- Mounting kit includes wood, concrete and steel stud attachment hardware
- P5080F model is built of heavy-duty material to withstand the weight of larger displays



P4263FP available in portrait mode for digital menu board applications



Accessories available for shelving and in-wall storage options



Lock-It™ Security barrels to deter removal of flat panel displays

1 (800) 368-9700 | [ORDERS@PREMIERMOUNTS.COM](mailto:ORDERS@PREMIERMOUNTS.COM)

[PREMIERMOUNTS.COM](http://PREMIERMOUNTS.COM)

BEYER  
BLINDER  
BELLE

THE  
MET

The Metropolitan Museum of Art  
The Great Hall Digital Displays

# Display Screen and Mounting Equipment Information

22

June 21, 2023