

Welcome to the Community Input Meeting for

St. Catherine's Park

This meeting will begin shortly.

Please remember to keep devices muted during the presentation.

After the presentation, there will be a group discussion to share ideas and concerns.

You may use the Raise Hand or Chat function at that time.





St. Catherine's Park

Community Input Meeting
Manhattan | June 8, 2023

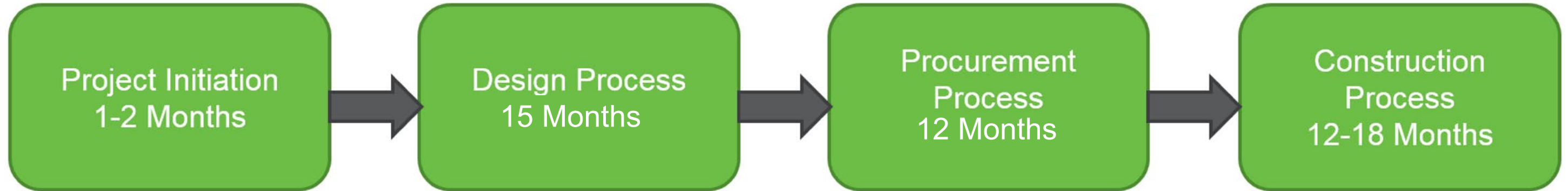
Parks

Tonight's Agenda

- **Parks' Presentation**
- **Your Feedback**

Typical Project Timeline

The timeline for a capital project is between 40-47 months.



- Fully funded
- Designer assigned
- **Community input meeting**

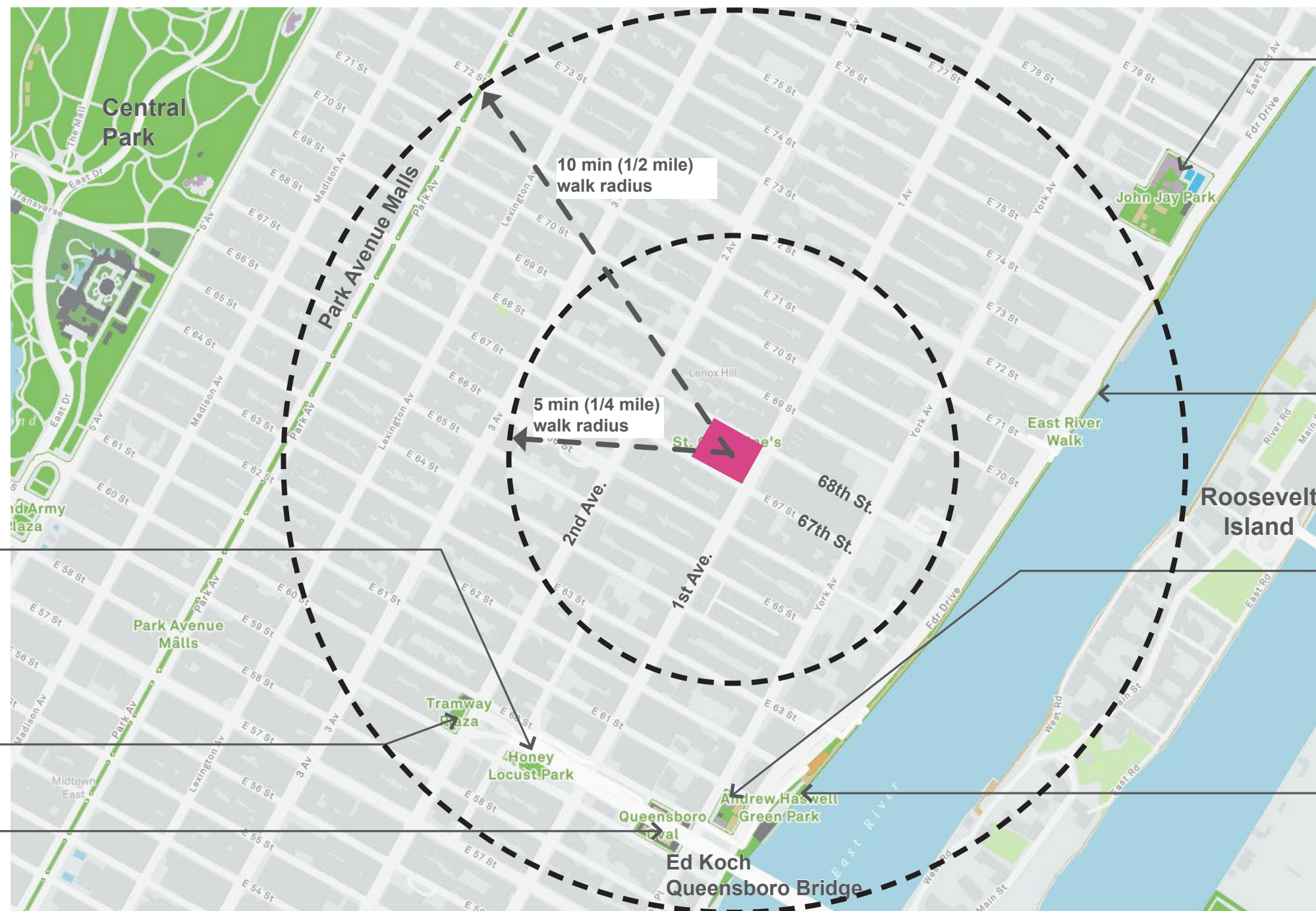
- Schematic design
- Community Board 8 Presentation
- Public Design Commission review
- Contract documents
- Approvals, reviews and permits

- Legal reviews
- Bid solicitation
- Bid reviews and determination
- Contract award
- Comptroller approval

- Pre-construction and on-site meeting
- Construction work date set
- Subcontractor approvals
- Inspections



St. Catherine's Park



John Jay Park
Basketball (4)
Handball (4)
Playground
Spray Shower
Fitness
Tennis Court
Public Restrooms
Public Pool
Seating

East River Esplanade
Greenway
Seating

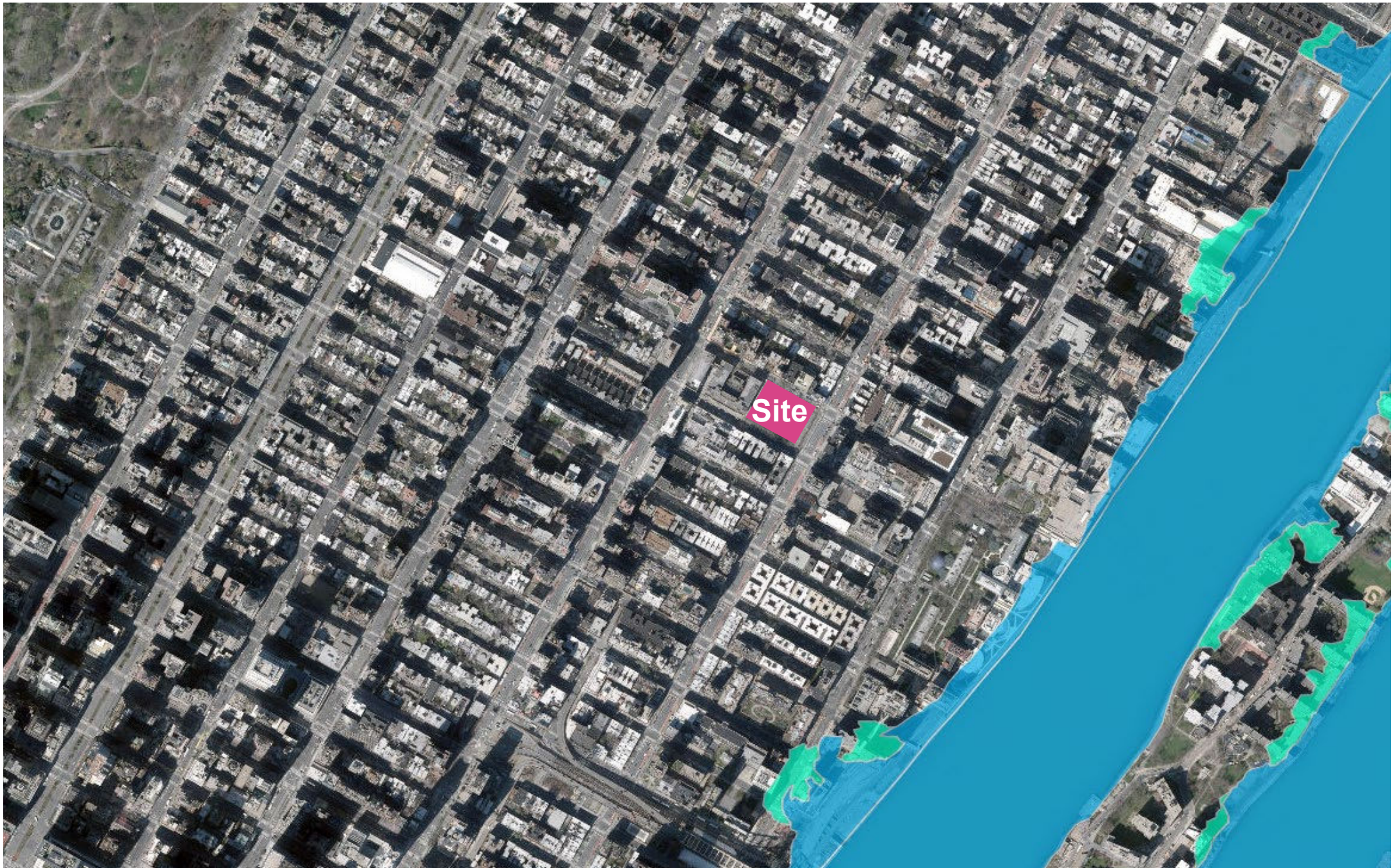
Twenty-Four Sycamores Park
Handball (2)
Basketball
Public Restrooms
Spray shower
Play equipment

Andrew Haswell Green Park
Dog Run
Greenway
Seating

Honey Locust Park
Seating Area

Tramway Plaza
Seating Area

Queensboro Oval
Tennis



Base Flood Elevation (BFE):

Flood Hazard Zones

2015 Preliminary Flood Insurance Rate Map

- V Zone (100-year floodplain subject to wave action)**
Areas along coasts subject to inundation by the 1% annual chance flood event with additional hazards associated with storm-induced waves.
- A Zone (100-year floodplain)**
Areas subject to inundation by the 1% annual chance flood event.
- Shaded X Zone (500-year floodplain)**
Areas within the 0.2% annual chance floodplain, areas of 1% annual chance flooding where average depths are less than 1 foot, areas of 1% annual chance flooding where the contributing drainage area is less than 1 square mile, and areas protected from the 1% annual chance flood by a levee.
- Limit of Moderate Wave Action (LiMWA)**
The inland limit of the area expected to receive 1.5ft or greater breaking waves during the 1% annual chance flood event. Data from 2015 PFIRMs.

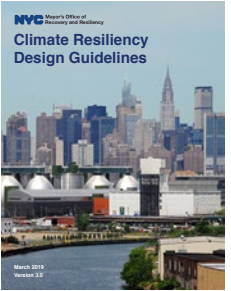
Future Floodplain 2050s

- Future 1% Annual Chance Floodplain (100-year)**
- Future 0.2% Annual Chance Floodplain (500-year)**

Resources (Links):



NYC Parks: Design and Planning for Flood Resiliency



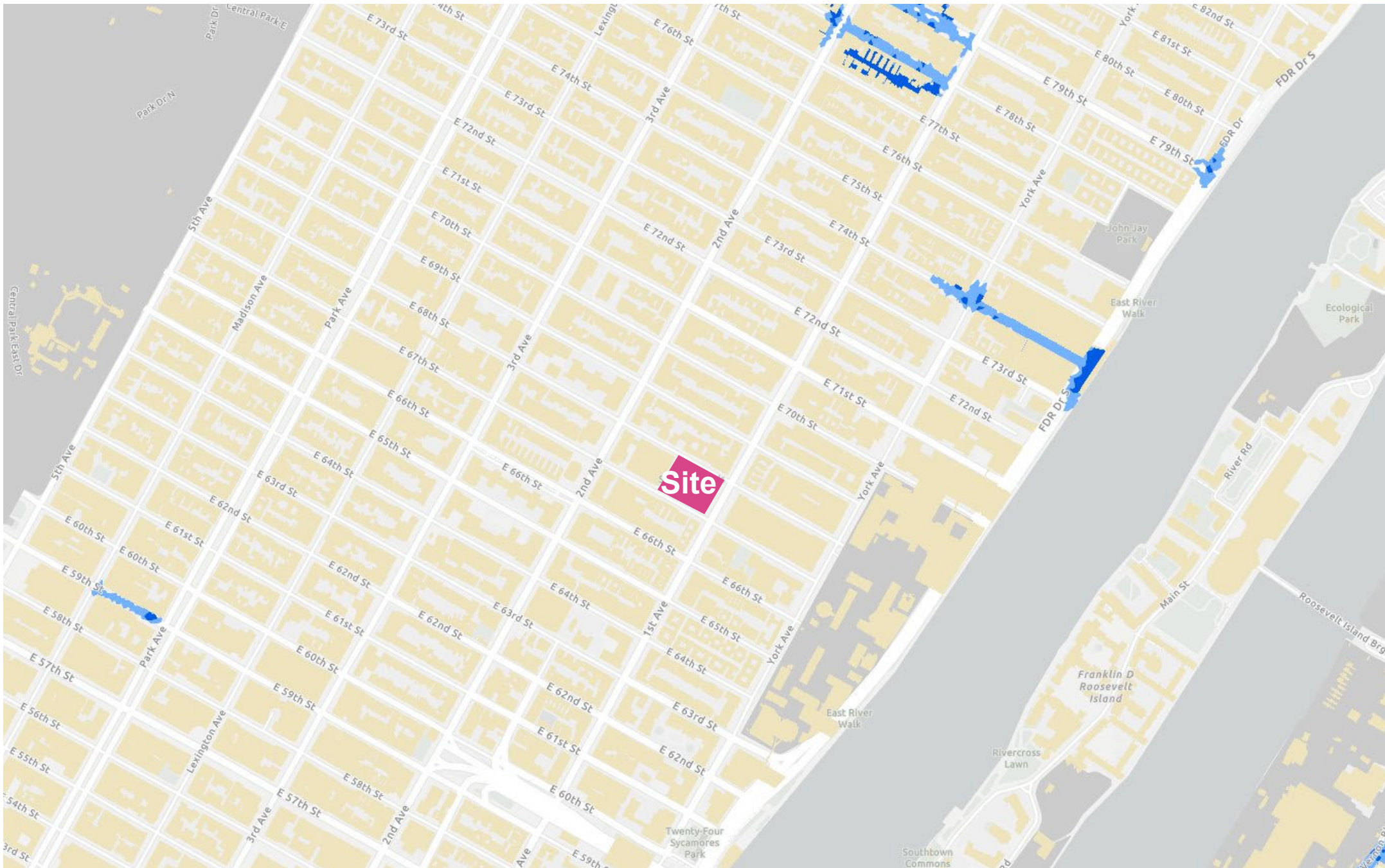
NYC MOCR: Climate Resiliency Design Guidelines (v4.0)



NYC Parks

St. Catherine's Park | Flood Risk (Coastal)





NYC Stormwater Flood Maps (Moderate Flooding)

- Area not included in analysis
- Future High Tides 2050
- National Wetlands Inventory
- Deep and Contiguous Flooding (1ft and greater)
- Nuisance Flooding (greater or equal to 4 in and less than 1 ft)

- This map:
- Reflects roughly two inches of rain falling in one hour (also referred to as the 10-year storm, with approximately 10 percent chance of occurrence in any given year)
 - Shows a moderate rainstorm that City infrastructure was not designed to handle.
 - Reflects 2.5 feet of sea level rise, which is a high estimate for the 2050s.
 - Includes impacts of potential blocked storm drains and outfalls from sea level rise.

Flooding from a storm like this would temporarily disrupt transportation and enter buildings and basements, causing minor damages to contents and surfaces.



NYC Stormwater Flood Maps (Extreme Flooding)

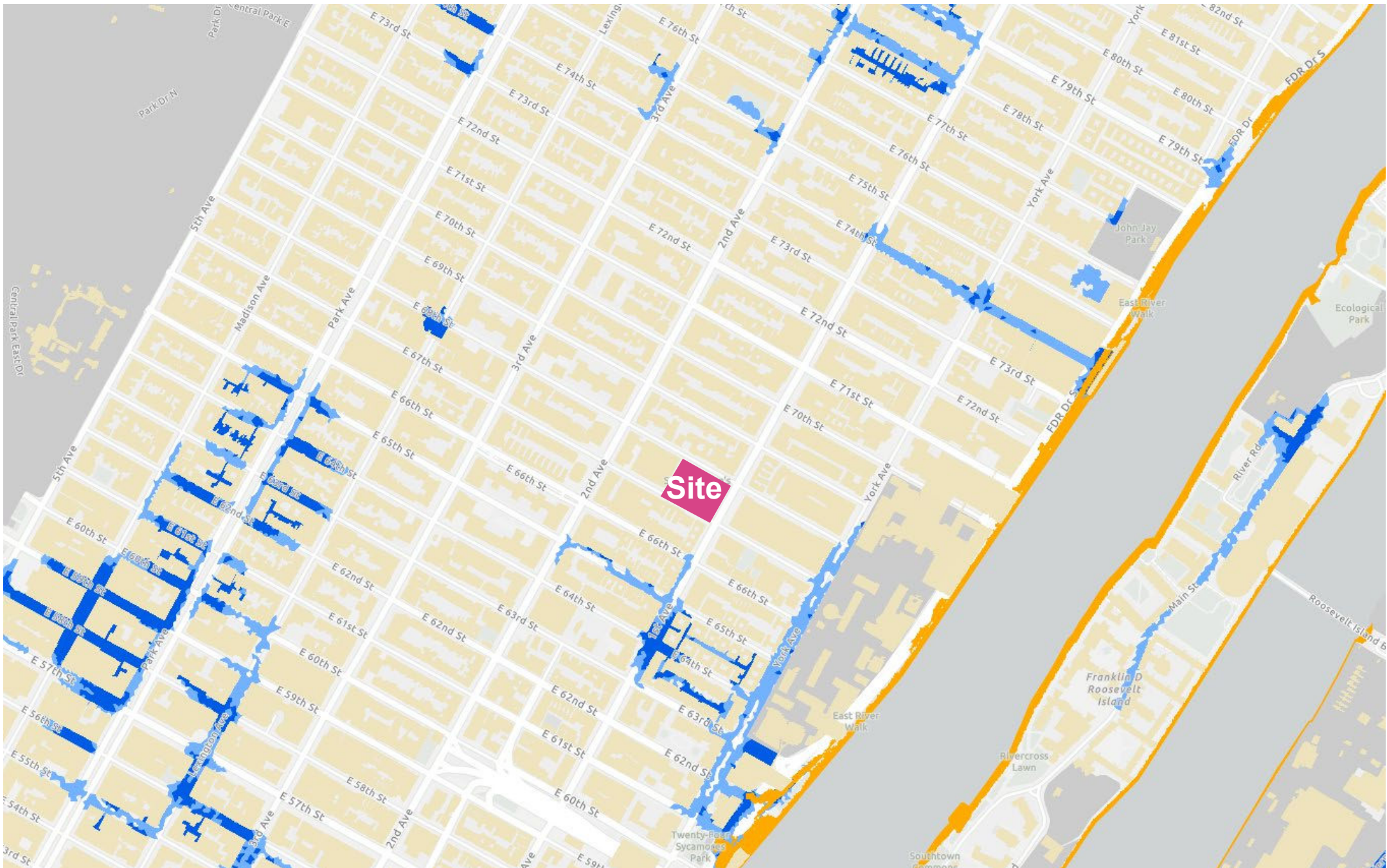
- Area not included in analysis
- Future High Tides 2080
- National Wetlands Inventory
- Deep and Contiguous Flooding (1ft and greater)
- Nuisance Flooding (greater or equal to 4 in and less than 1 ft)

This map:

- Reflects roughly 3.5 inches of rain falling in one hour (also referred to as the 100 year storm, with approximately 1 percent chance of occurrence in any given year).
- Shows an extreme rainstorm that City infrastructure was not designed to handle.
- Reflects 4.8 feet of sea level rise, which is a high estimate for the 2080s.
- Includes impacts of potential blocked storm drains and outfalls from sea level rise.

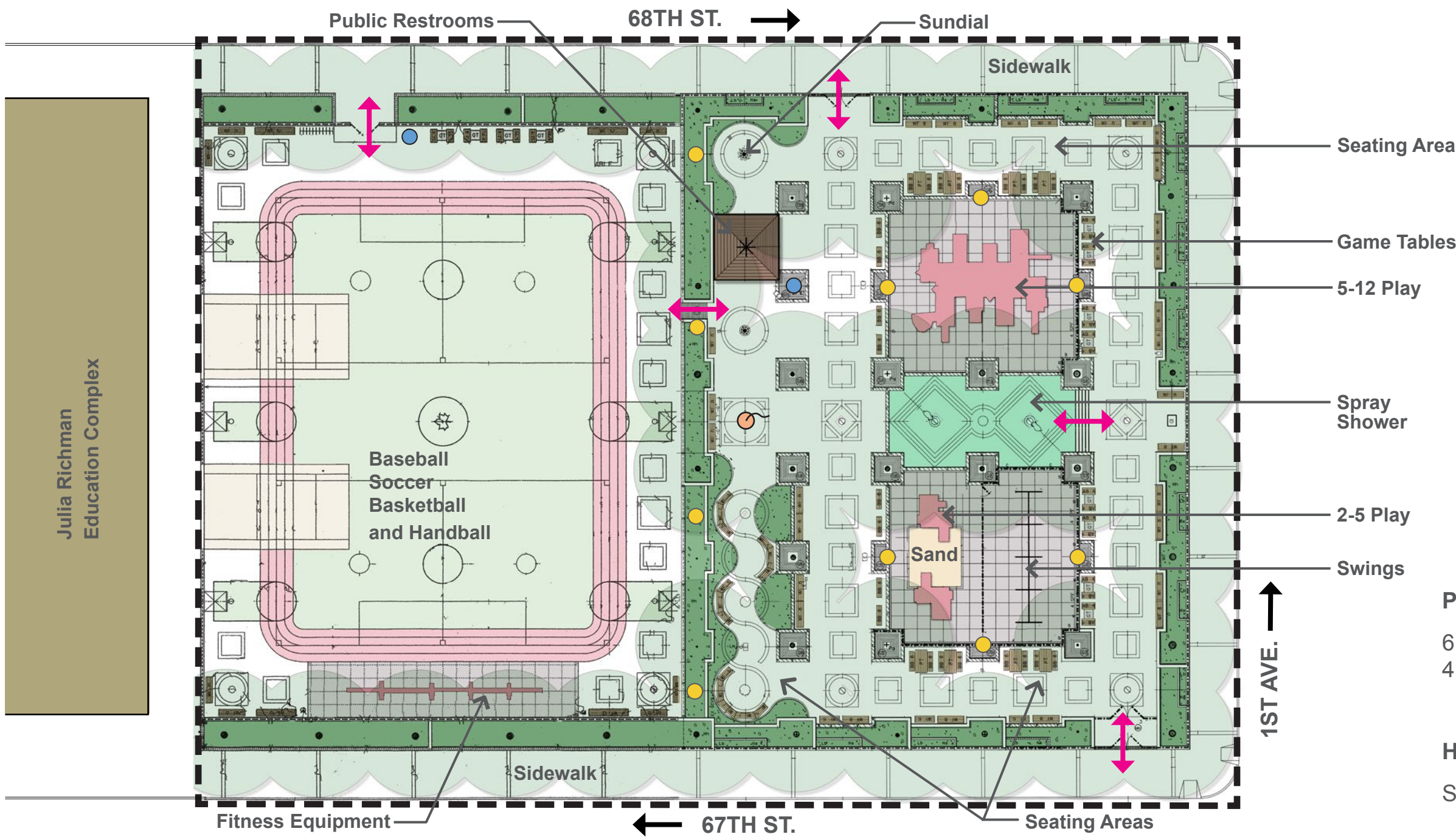
Flooding from a storm like this would:

- Cause widespread damage and disruption to both private and public property.
- Disrupt roads, subways, regional rail, and potentially power/communication networks.
- Cause flooding across coastal neighborhoods due to sea level rise impacts.



St. Catherine's Park | Flood Risk (Stormwater)





Legend

- Project Limit
- ↔ Park Entrance
- Play Equipment
- Building or Structure
- Asphalt Pavement
- Reinforced Concrete
- Tree
- Parks Lightpole
- Drinking Fountain
- Flagpole
- ← Traffic

Park Tree Canopy Information

61.6% Parkland Canopy Cover
4.6% Canopy Change 2010-2017

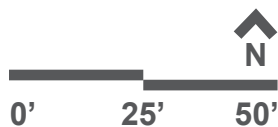
Heat Vulnerability Index

Site is not in high HVI area.



NYC Parks

St. Catherine's Park | Existing Conditions

















Things We Think About in All Projects





Heat Mitigation



Managing Stormwater



Tree Preservation

Accessibility & Inclusive Design



Welcoming Entrances



Design Ideas





Seating Areas



Spaces for Gathering



Play Features

POLICY



Play Features



Play Features



Play Features



Water Play



Water Play



Water Play



Multi-Purpose Sports



Sports Courts



Adult Fitness



Community Feedback

Please use the Raise Hand or Chat tools to share feedback.

More to say? Questions?

- **Online Comments**

<https://www.nycgovparks.org/planning-and-building/input>

- **Contact your Outreach Coordinator**

Ashley Kuenneke

(212) 408-0214

ashley.kuenneke@parks.nyc.gov

- **Learn about Partnerships for Parks**

cityparksfoundation.org/about-partnerships-for-parks

PLAYGROUND

Keep Swings ✓✓
More Swings, Sometimes there's a line, add ADA Swing
Jungle gym, water features
Omit sandbox, or at least do not have slides lead there ✓✓✓
Limit planting and lunch eating space to preserve much of the space for play
Runaround space
Increase footprint of climbing structure
Do something fun with the safety surface, consider it a play element
Keep sandbox, but make it more sustainable, no rats
Different areas for each age group

MULTIPURPOSE / SPORTS

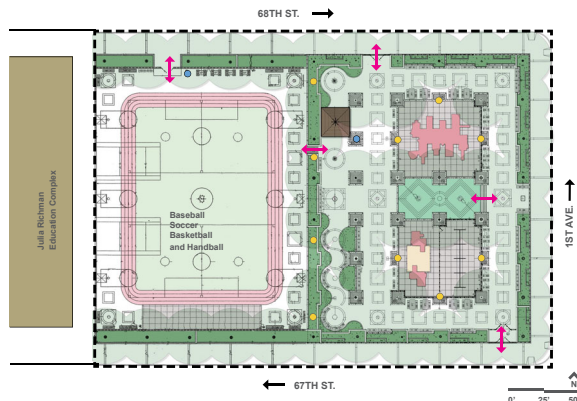
Nets keep disappearing, need new hoops
Pickleball is nice addition, need signage about when allowed
consider having a portion of synthetic turf ✓✓
Plowing consideration is important, can it be heated ✓
so no plowing is needed?
School kids are out using this area in all weather
A lot of demand for pickleball, continue to accommodate
All new surface, whatever it is
Pickleball should be limited to allow kids more time, no permanent courts please

SEATING

Passive recreation for lunch and birthday parties
Seniors should be considered, shaded reading area
Keep seating for seniors ✓
Need seating on east and west side of play equipment
Picnic tables may need separation from play so kids don't party-crash

Hospital workers appreciate that they can relax here, it seems like enough space for all

Additional comments to be collected via online survey until 6/22/2023 at nyc.gov/parks/input



SAFETY

Do not add hiding spots or anything facilitating bad activities
Fencing and walls around exterior should remain as are. They prevent people from entering/hiding
4' fence height would NOT be adequate ✓
Reinforce, maintain, paint walls
Extermination needed before, during, after project
Ballfield fence height should remain high
No smoking including weed should be enforced
Add lighting for sports area to help with conflict with school use?
Need safe zone marked around swings to help kids/parents know where they can safely stand

PLANTING

Garden beds around edges have rat activity, need to mitigate while keeping plants ✓
Use landscape to screen/soften concrete and metal (ie. fences)
Love plants, protect them better from kid damage, define separate plant areas better? Higher fencing? ✓
consider loss of light from blood center construction, maybe do not need much more shade
4' fencing around plant beds needed, range fence not adequate

CIRCULATION

Accessibility is important!
Traffic flow is important. Basketball courts must be crossed to reach fitness equipment currently, need a pathway.
Eliminate crisscrossing of uses/users. Keep entrance at 67th and 68th which do not lead directly to play
Reconsider bathroom area access conflicts?
Some like the bathroom access, of good access from all sides
Remove erroneous fencing (Chris knows)

OTHER

Keep symbolism ✓
Spell out symbolism somewhere, or make more clear ✓
Look at elevation changes
Is a pool feasible?
Less metal, fencing, hot in sun, feels like cage
Bathrooms need to be renovated, expanded, more storage, and staff space ✓✓✓
There are mice in the sandbox
Sculpture (Sundial) is nice
Previously approved improvements designed by Chris Crowley should go forward
Signage (bulletin board?) for events in the park
Existing signage in concrete should be retained, more rules signs! changing tables needed bathroom



NYC Parks

St. Catherine's Park | Community Input Notes