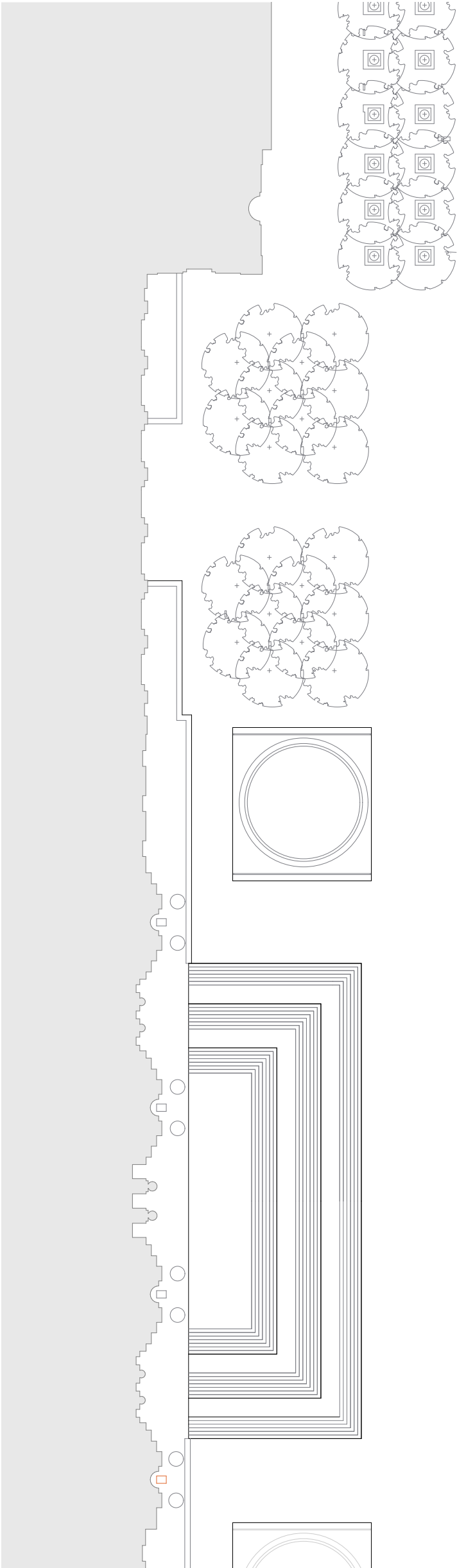


# 1014 Fifth Avenue

An association between David Chipperfield Architects, Paratus Group and Karo Architects



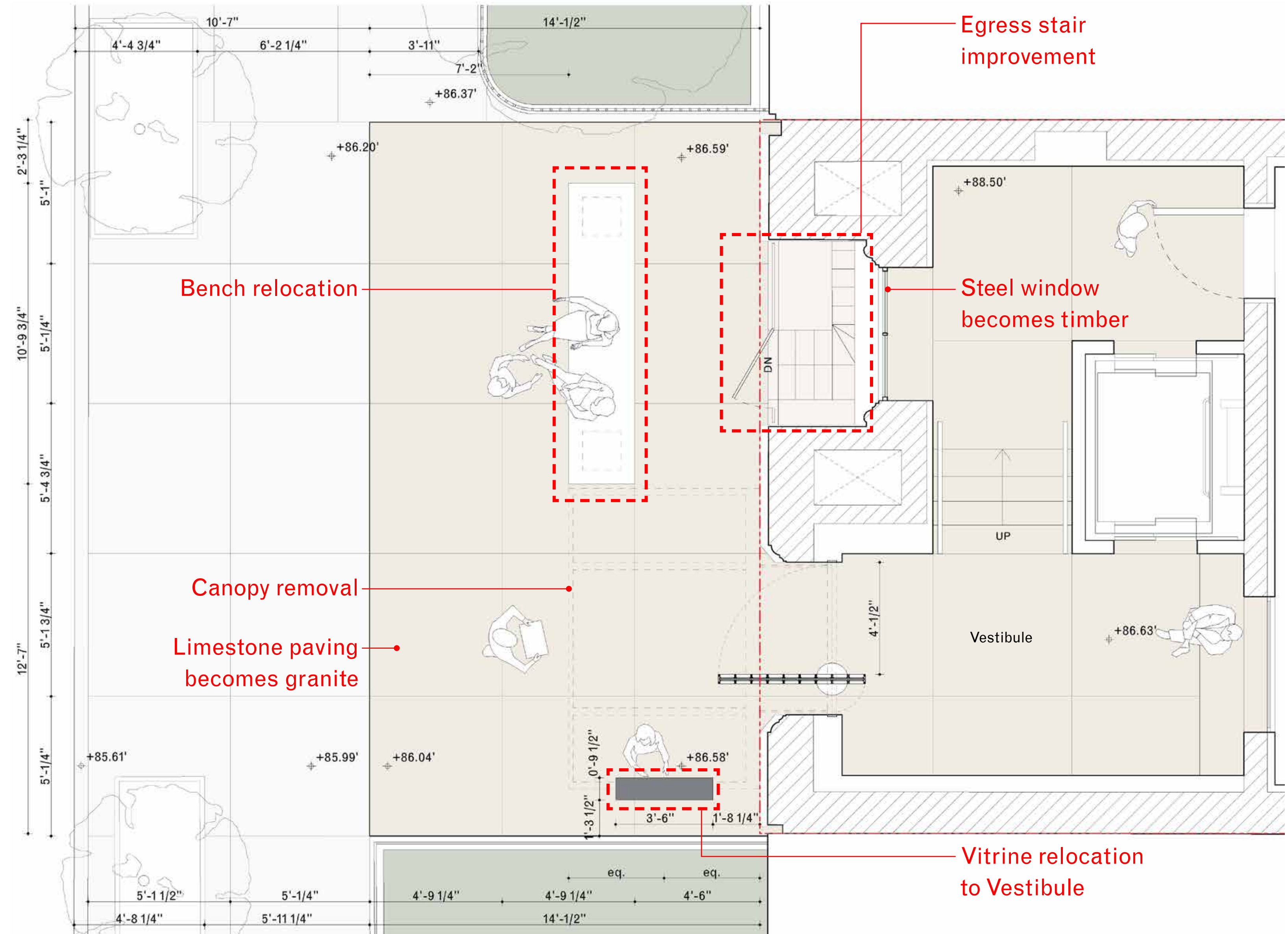
# Front area — amendments to approved design

## Response to LPC conditions

- Window material
- Canopy width

## Further design development

- Egress stair improvement
- Bench relocation
- Vitrine relocation to vestibule
- Limestone paving becomes granite



## Front area — proposed

- Egress stair improved, centered on window above and new basement opening utilises existing window lintel
- 5' x 5' granite paving introduced instead of limestone, as more hard-wearing, long-lasting and sourced on East Coast
- Bench is relocated to accommodate stair reconfiguration
- Vitrine is removed, as virtual noticeboard located inside vestibule

