

# 1014 — Space For Ideas

## Community board 8 hearing

### 15 May 2023

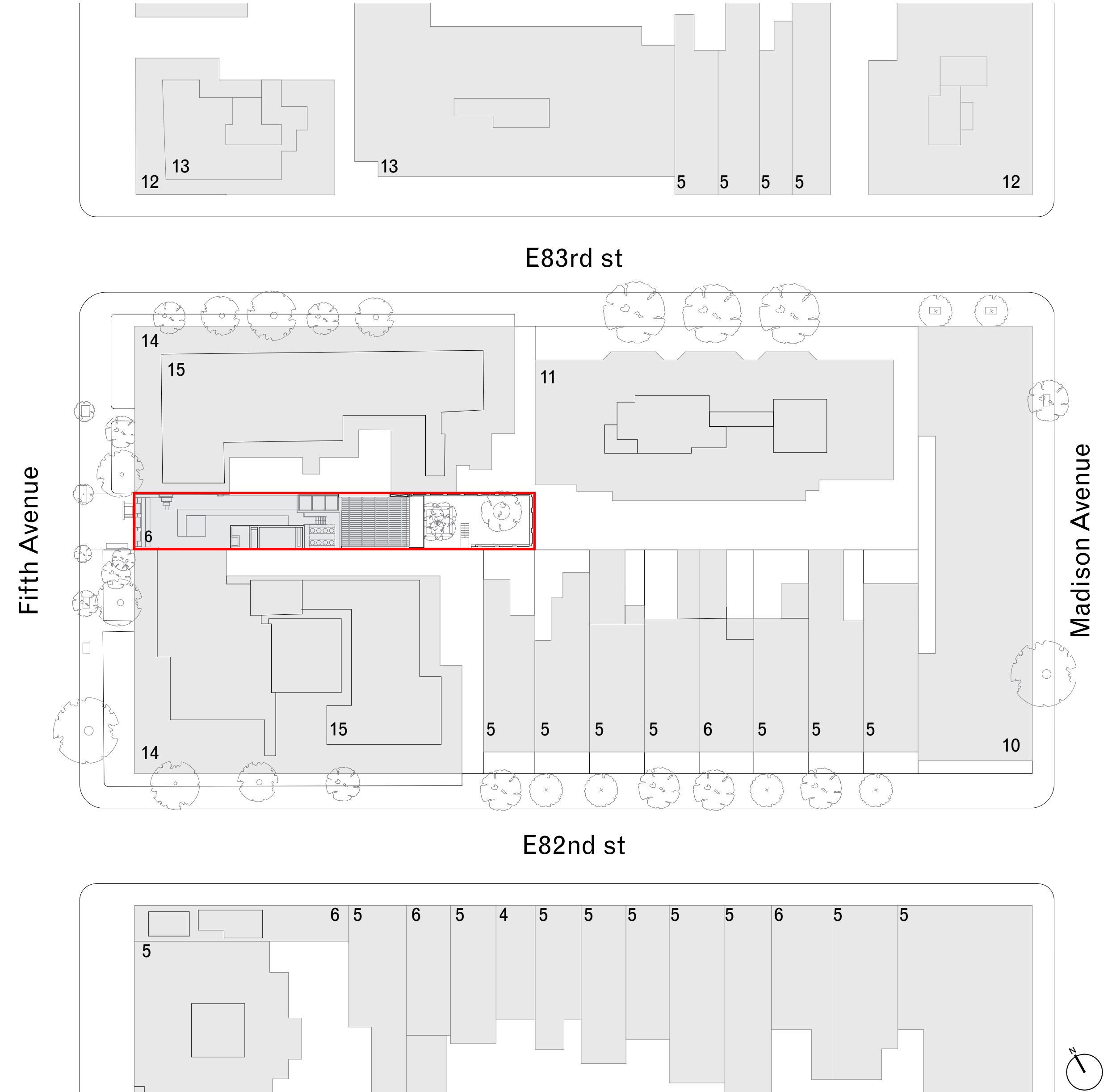
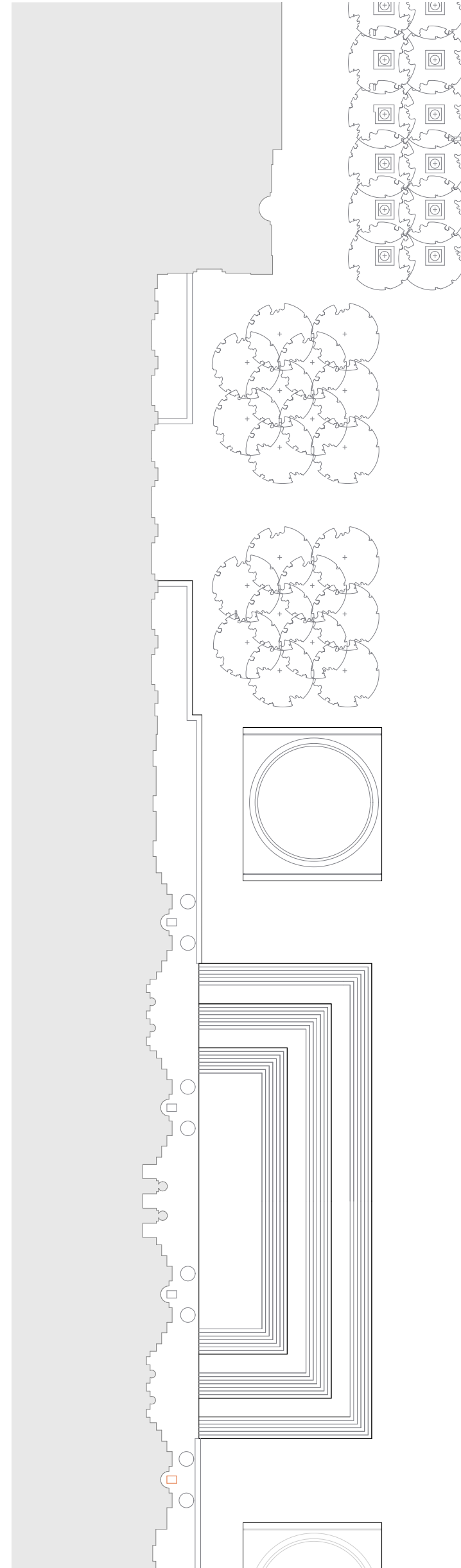
Certificate of Appropriateness Application  
no. #M00746664-I1

An association between David Chipperfield Architects,  
Paratus Group and KARO Architects





## A photograph of a historic building at dusk, featuring a central section with a green mansard roof and arched windows. The building is flanked by taller, more modern structures. In the foreground, a fountain with multiple jets of water is illuminated, and a person is walking on the sidewalk.



# **Proposed amendments to approved design**



Front area — approved design





# Comparison of previous CB8 proposal and approved scheme





# Front area — proposed amendments to approved design



Limestone paving  
becomes granite

Bench  
relocation

Steel window  
becomes timber

Egress stair  
improvement

Canopy removal

Vitrine relocation



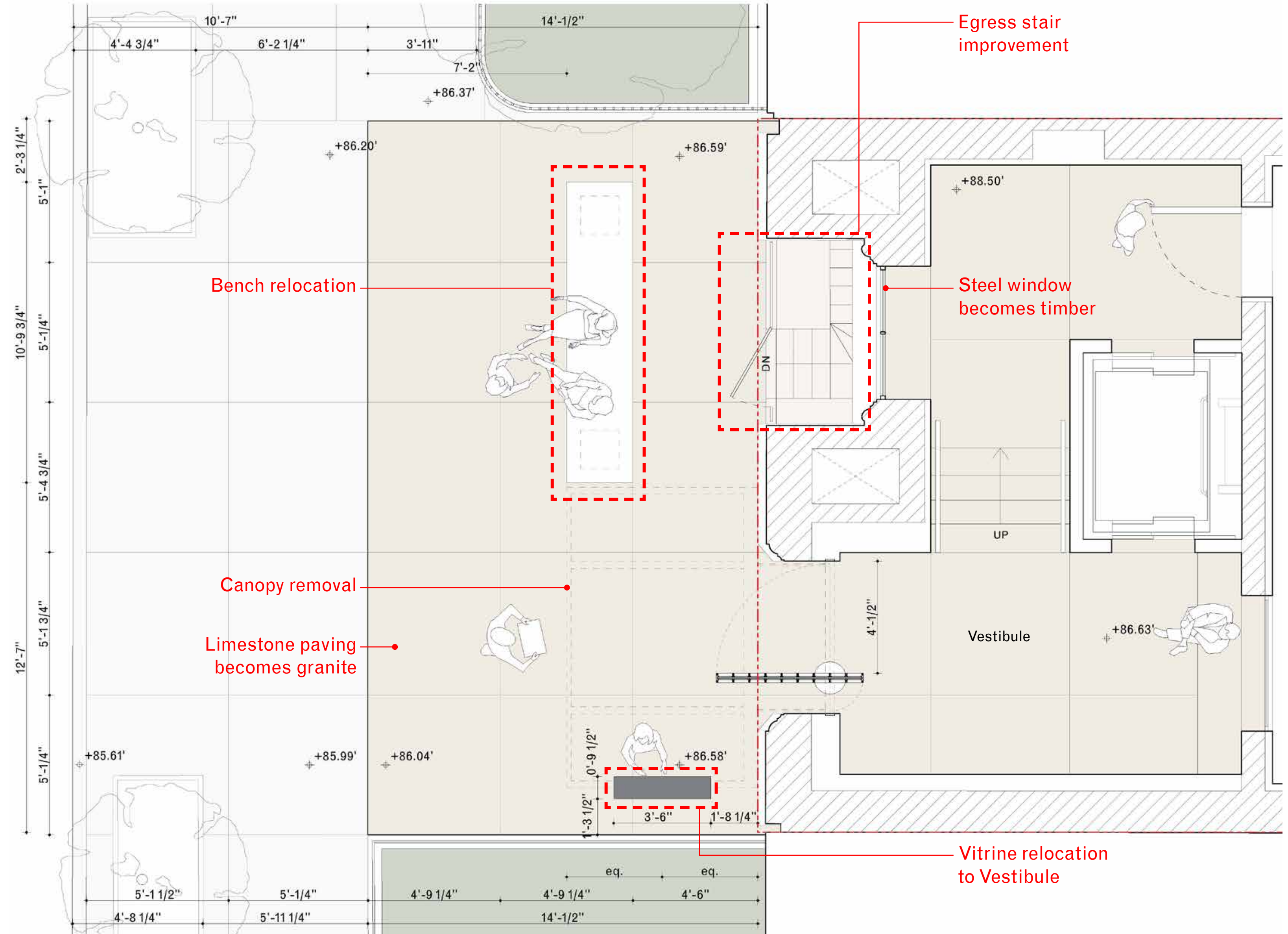
# Front area — proposed amendments to approved design

## Response to LPC conditions

- Window material
- Canopy width

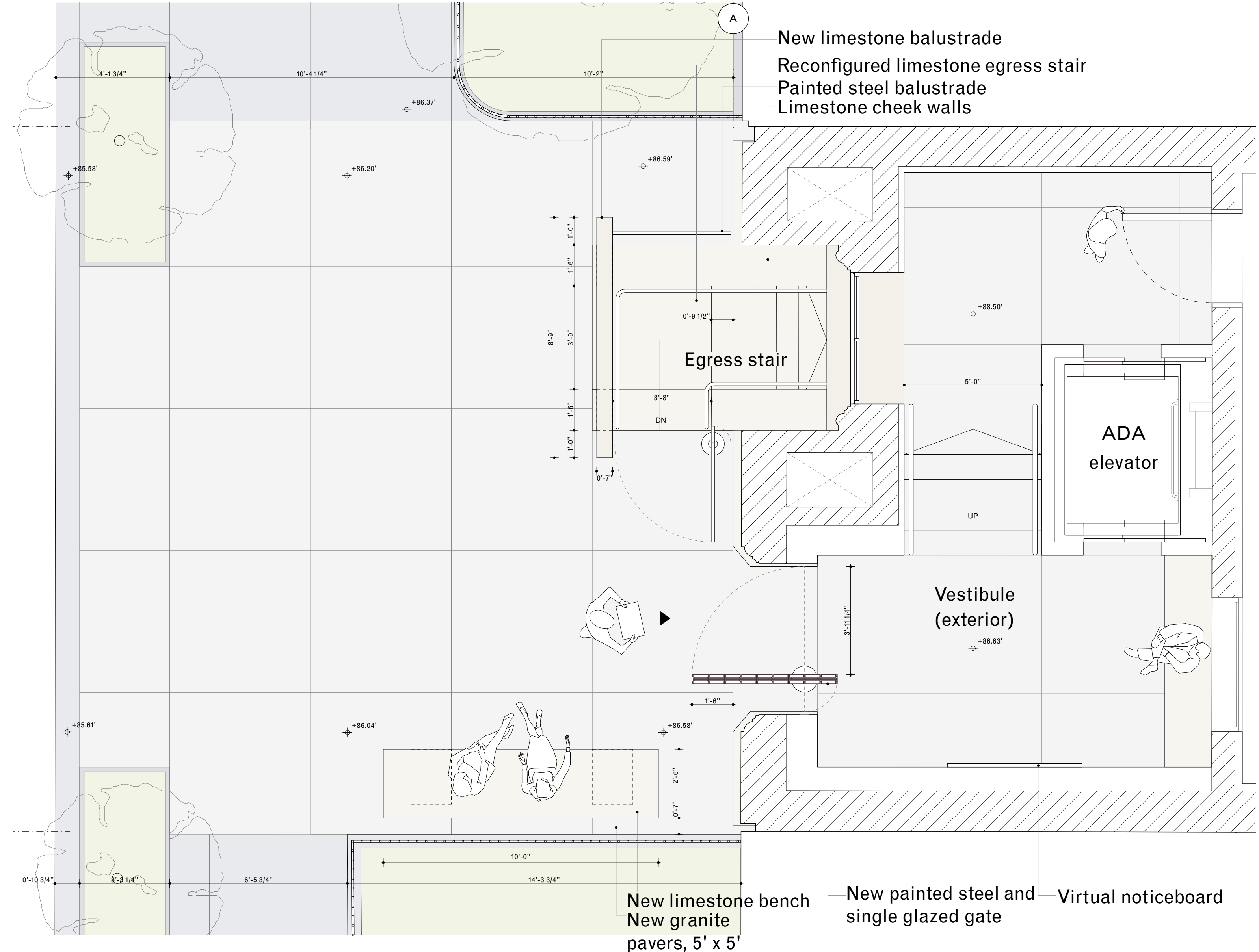
## Further design development

- Egress stair improvement
- Bench relocation
- Vitrine relocation to vestibule
- Limestone paving becomes granite



# Front area — proposed

- Egress stair improved, centered on window above and new basement opening utilises existing window lintel
- 5' x 5' granite paving introduced instead of limestone, as more hard-wearing, long-lasting and sourced on East Coast
- Bench is relocated to accommodate stair reconfiguration
- Vitrine is removed, as virtual noticeboard located inside vestibule





# Front view — proposed



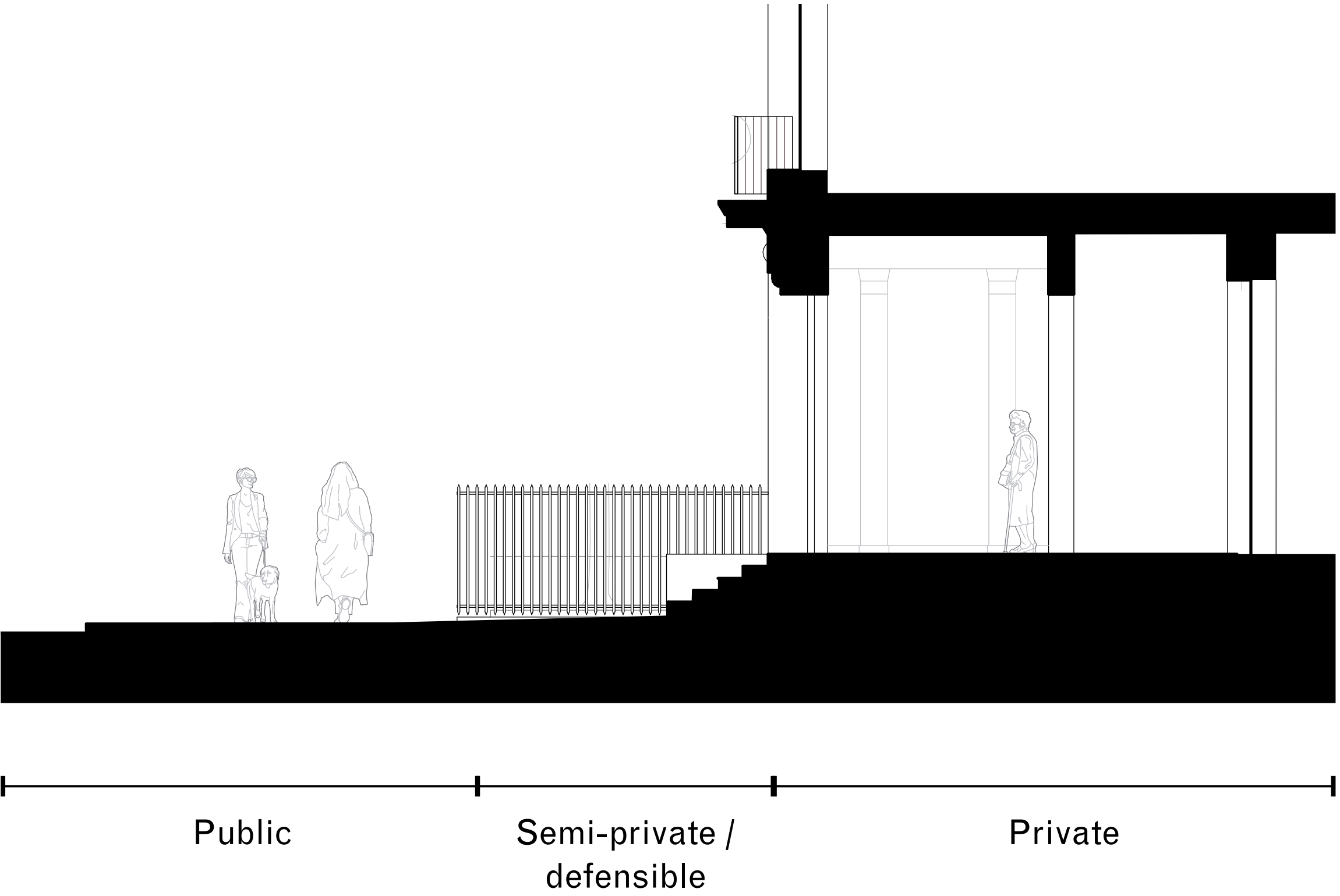
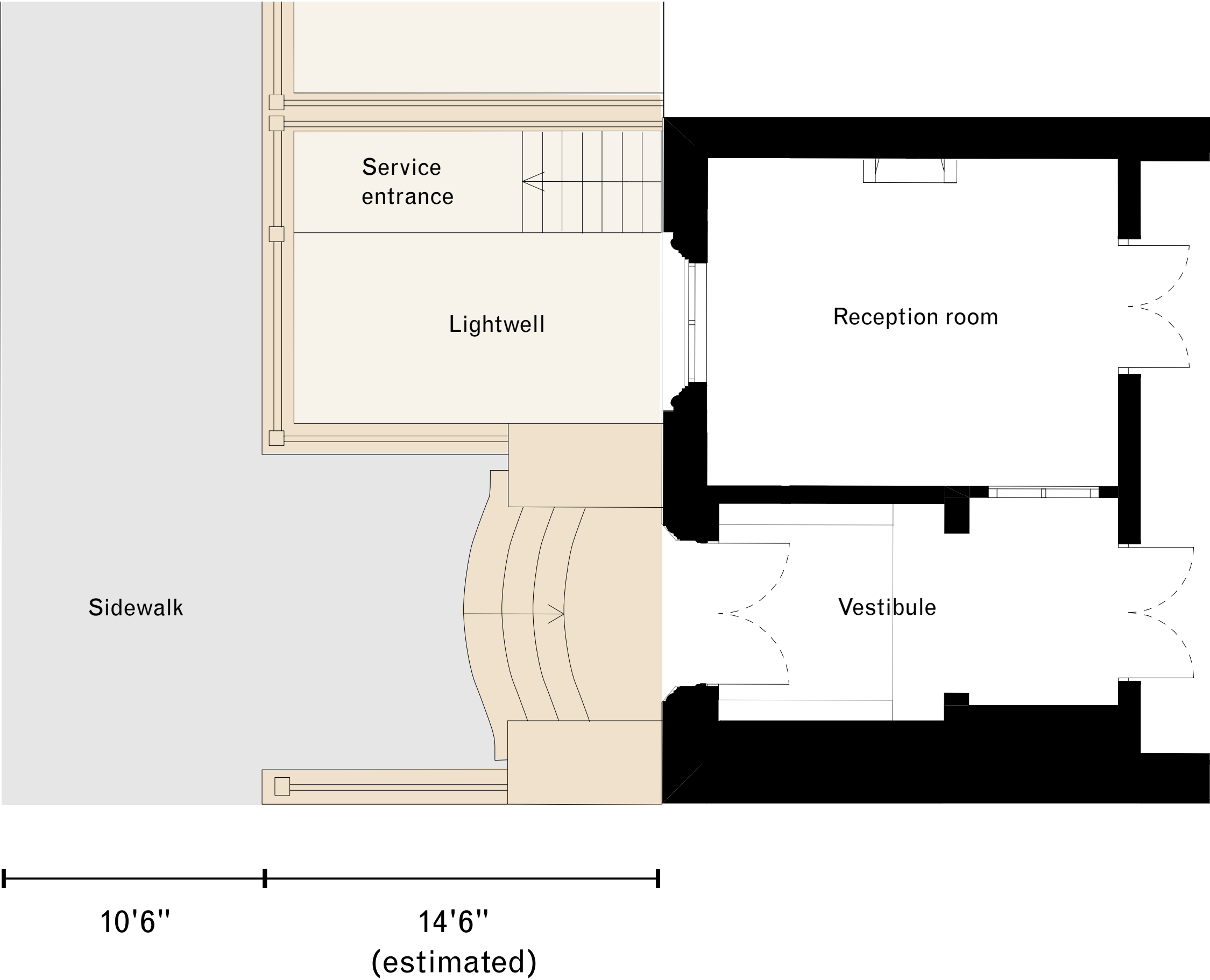


# Original and current condition



# Original 1906 townhouse — front entrance

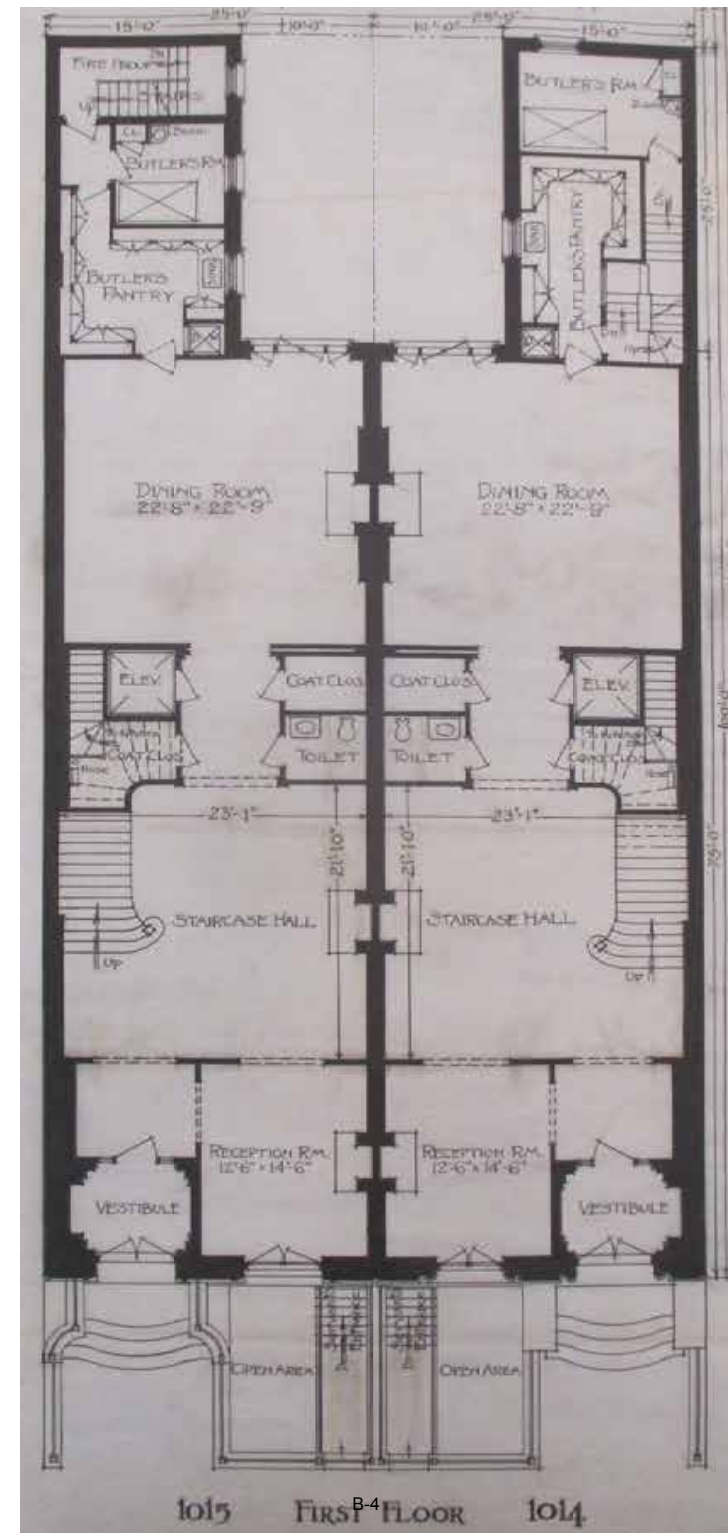
The original 1906 residence had an external basement stairwell and limestone stoop (source: archive drawings)



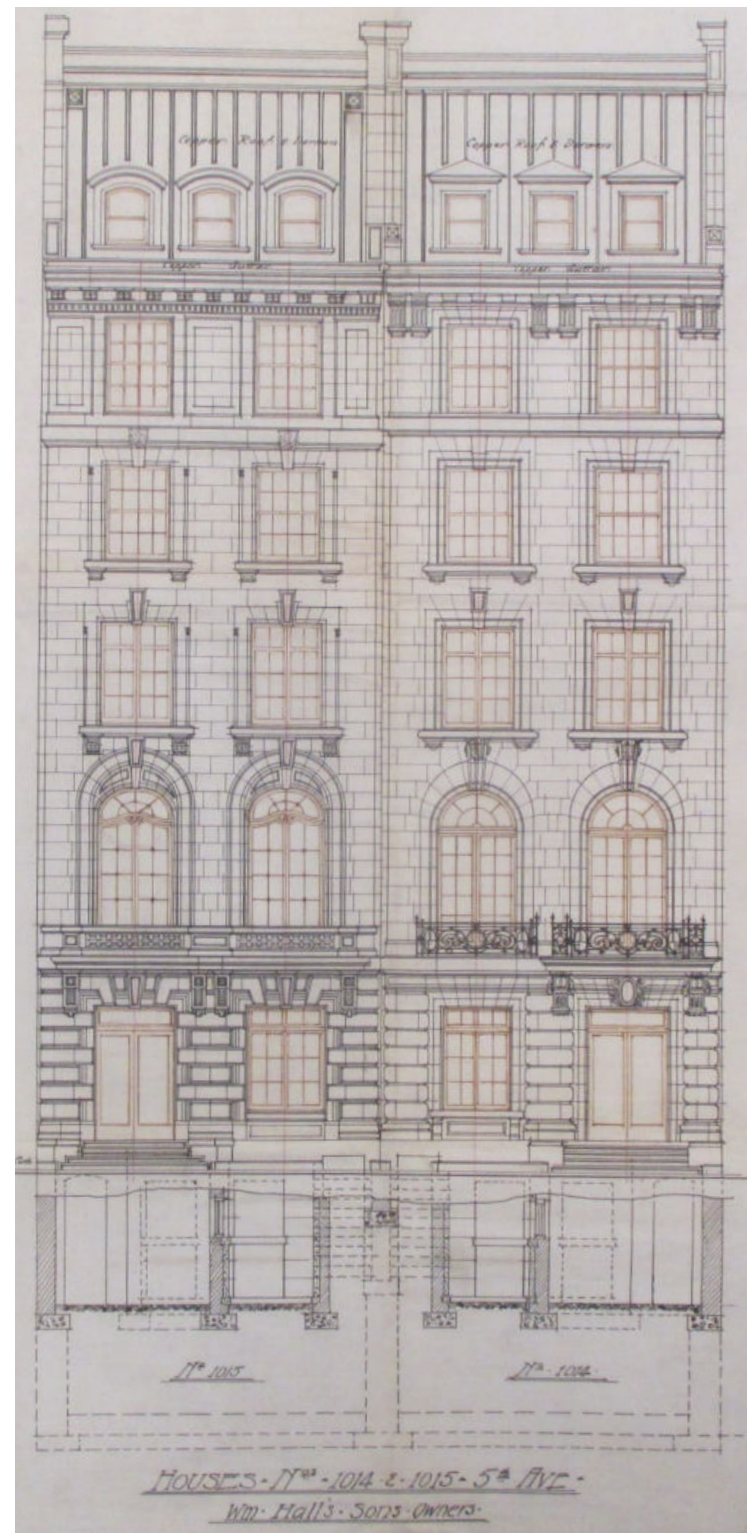


# Original 1906 townhouse — archival information

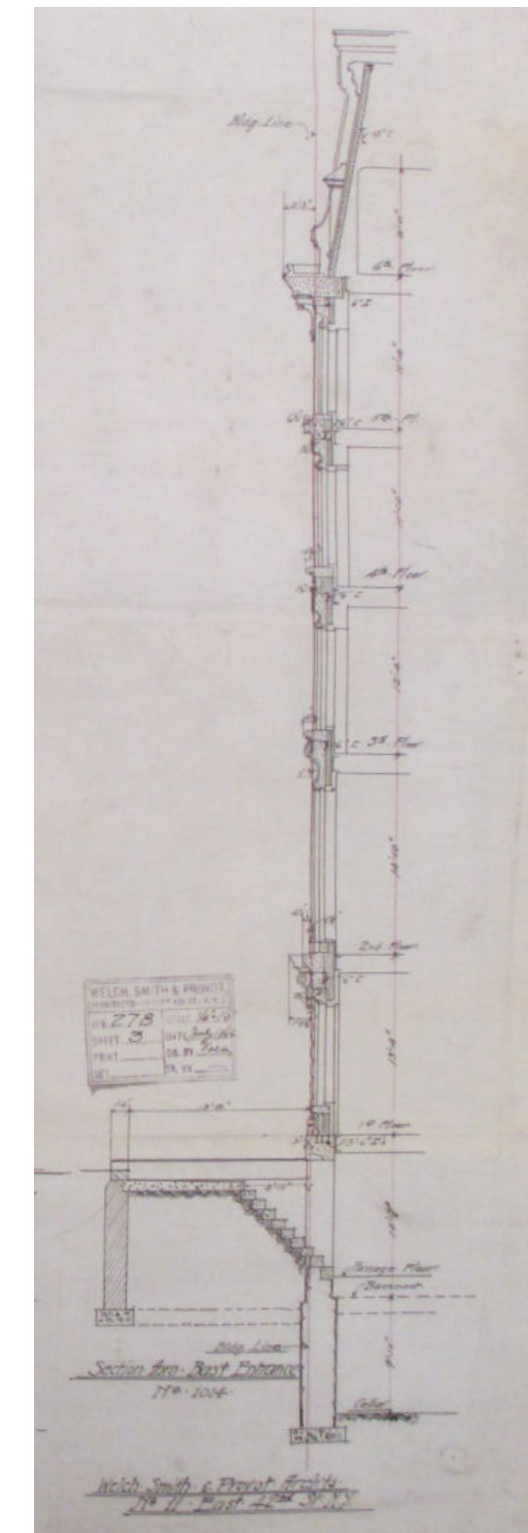
Archive drawings from the original architects Welch, Smith and Provot



First floor plan



West elevation



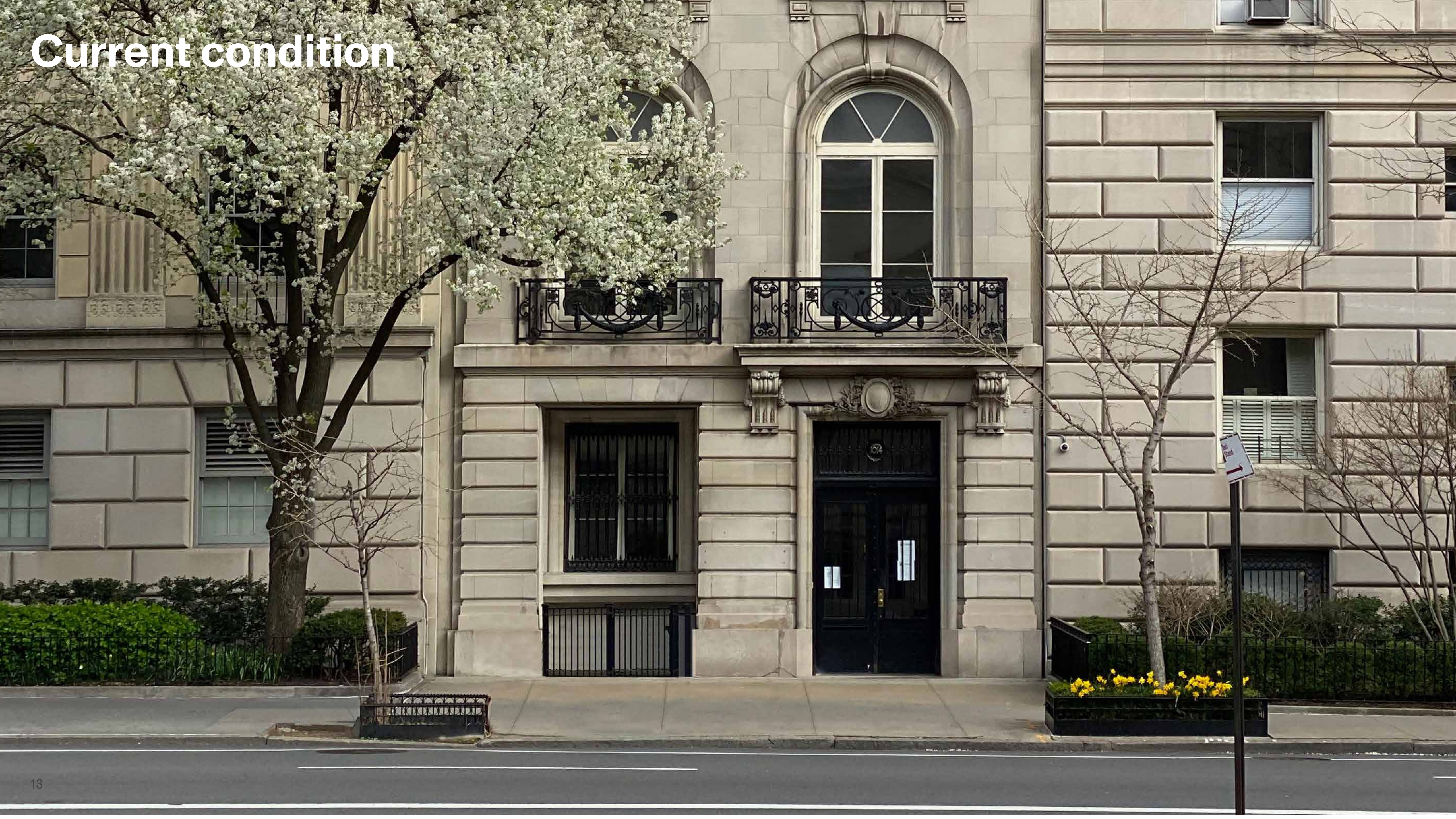
Facade section



Photograph of built condition, circa. 1912



Current condition





# Proposal



# Elevation — gate closed

## Amendments

- Canopy removed, following LPC condition to shorten width, shorter width compromised canopy presence and vestibule is already a covered space
- Steel window changed to painted timber window to match previous window, following LPC condition
- Entrance gate is made full-height, changing from a domestic scale to cultural scale
- Address signage plaque added in location of previous signage plaque





# Elevation — gate open

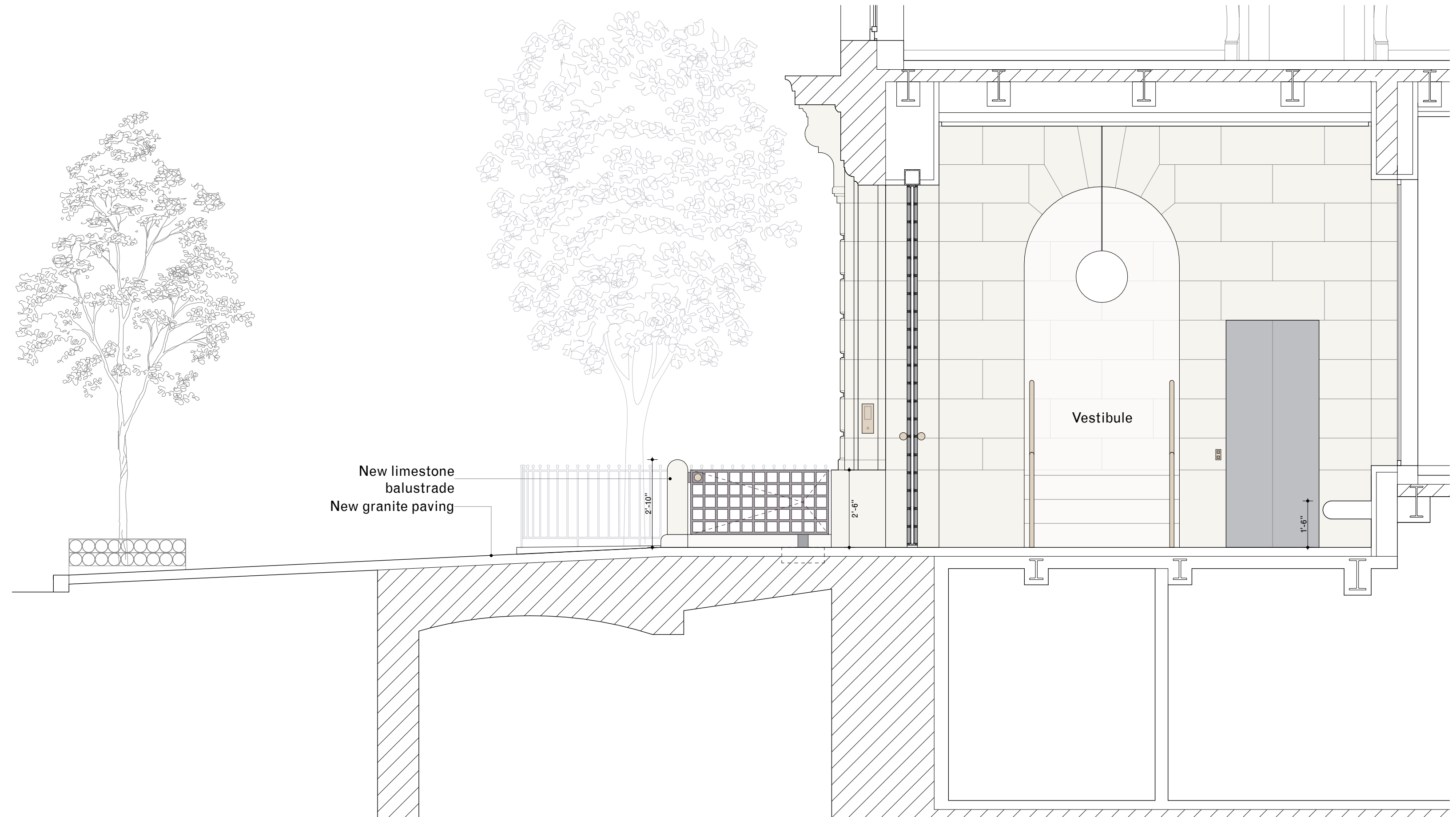
Gate would be held open during the day  
and closed at night





# Vestibule section

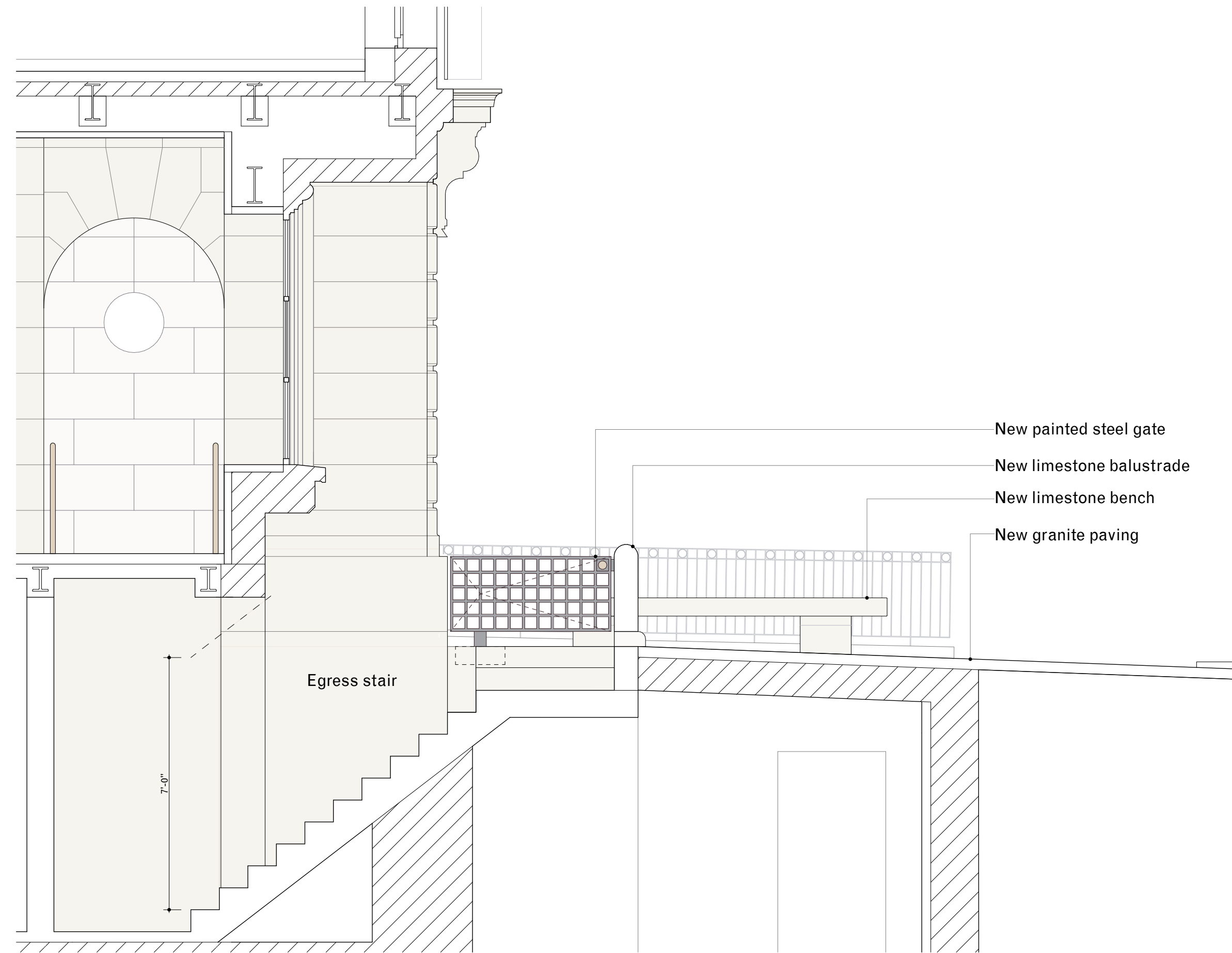
- New limestone balustrade subtly references rounded detailing of facade elements and rustication
- Stair pivot gate uses same language as entrance gate





# Stair section

- New stair uses existing lintel and provides sufficient clear head height





# Quality — relationship with the original facade

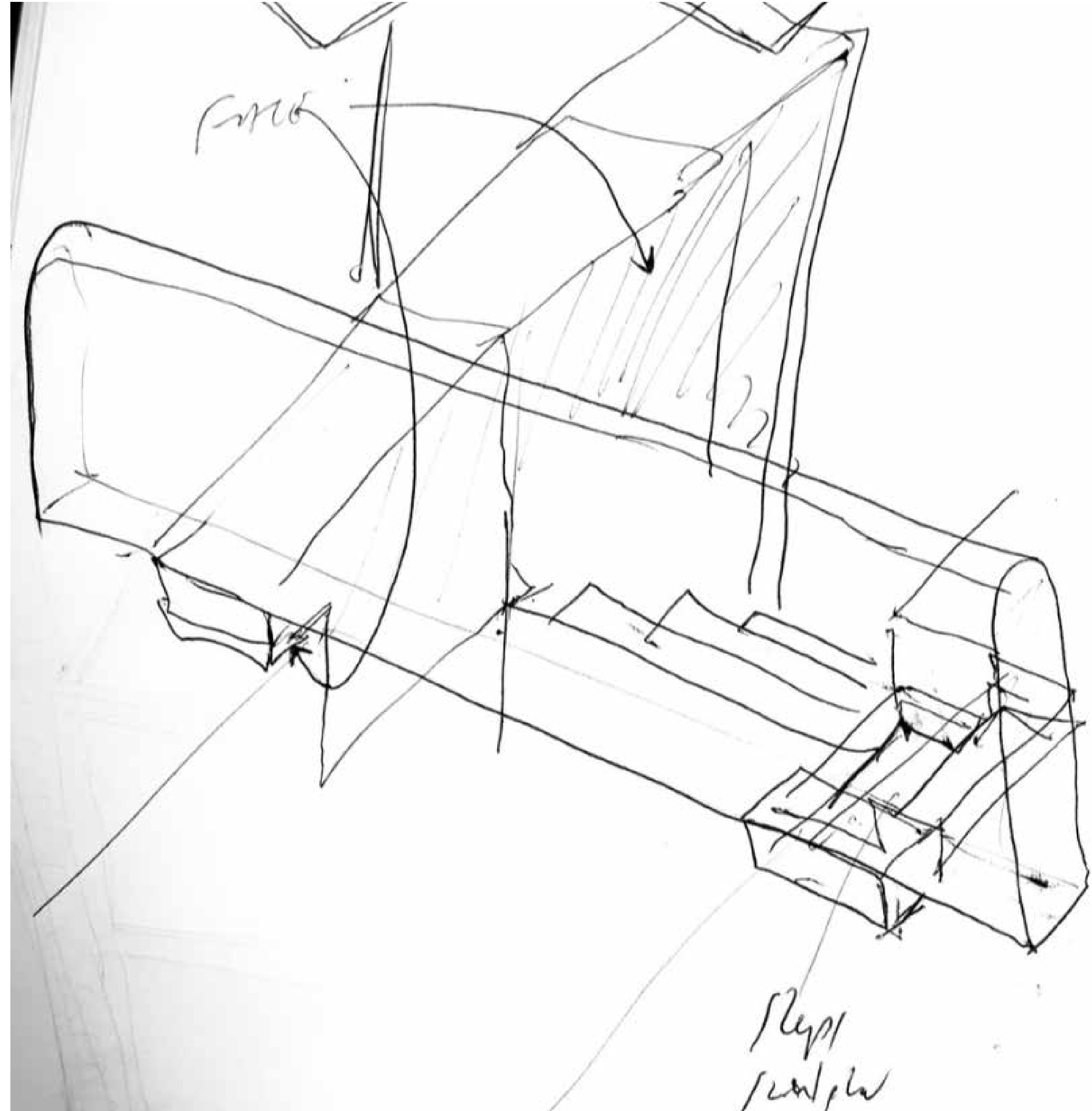
New elements subtly reference existing facade details, particularly the rounded rustication details, corbels, openings and balconies





# Integrating new with old

New limestone balustrade interlocks with extended cheek walls, which frame the egress stair





# Proposed view from South



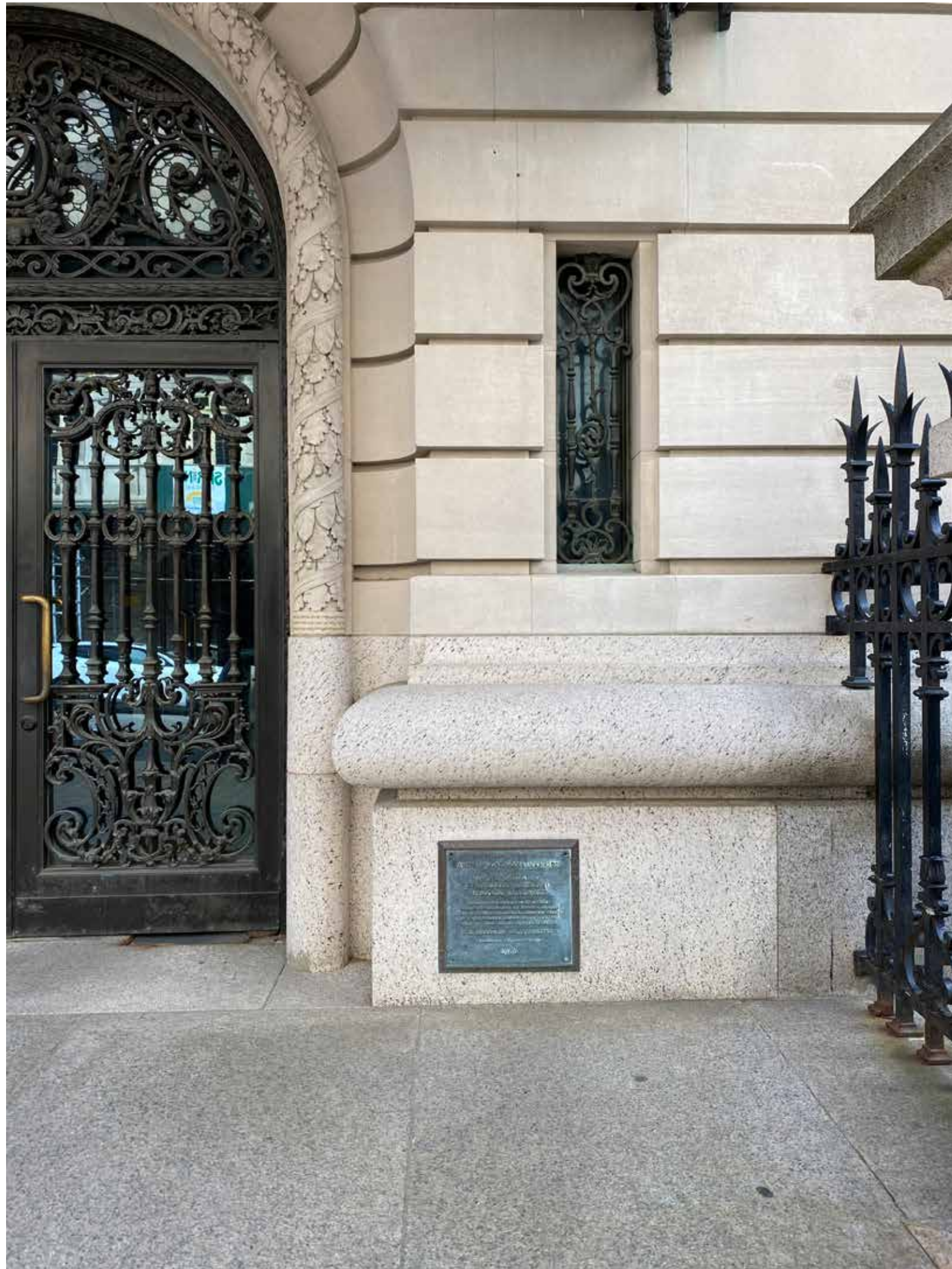


# Fifth Avenue cultural buildings — stone paving to entrances





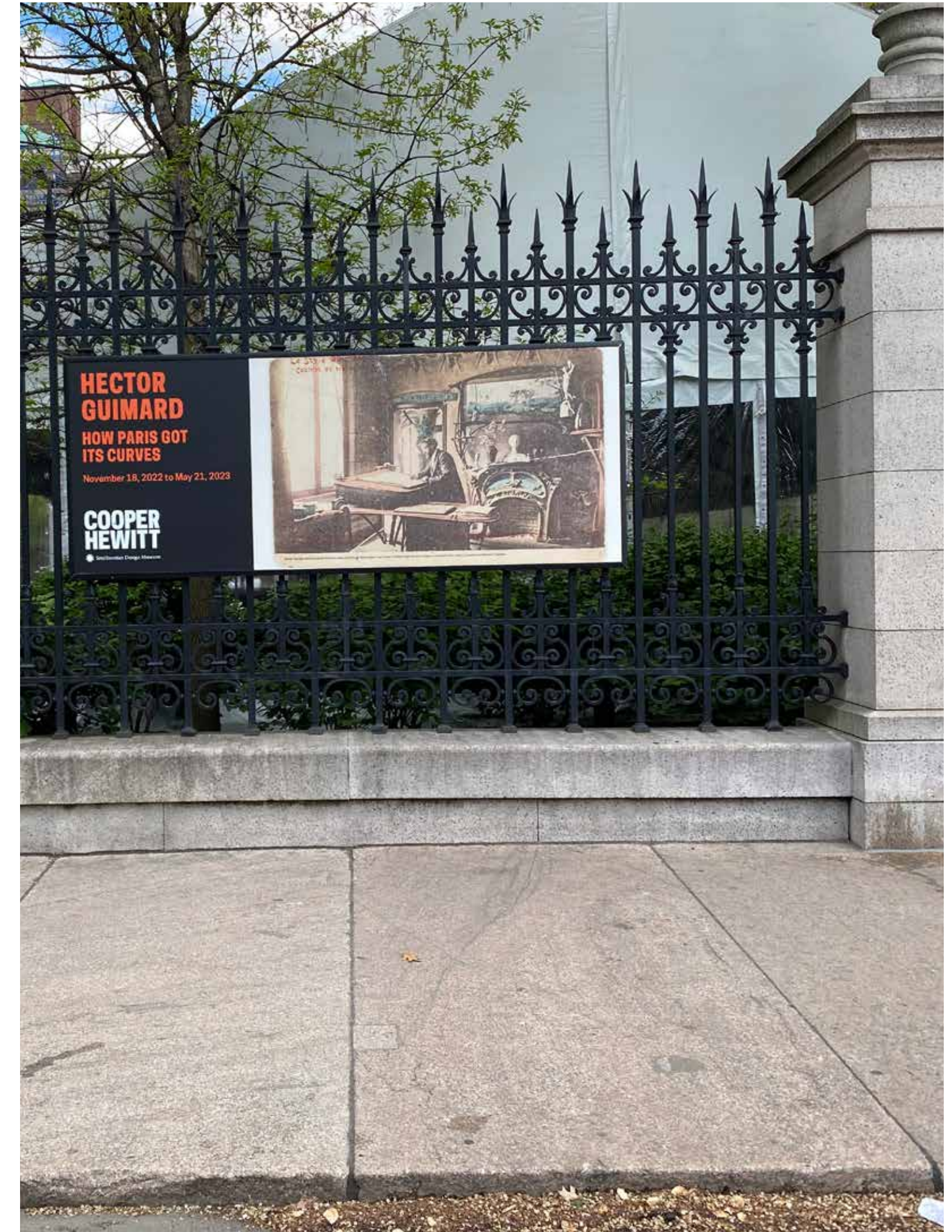
# Upper East Side cultural buildings — granite paving



Cooper Hewitt, Smithsonian Design Museum



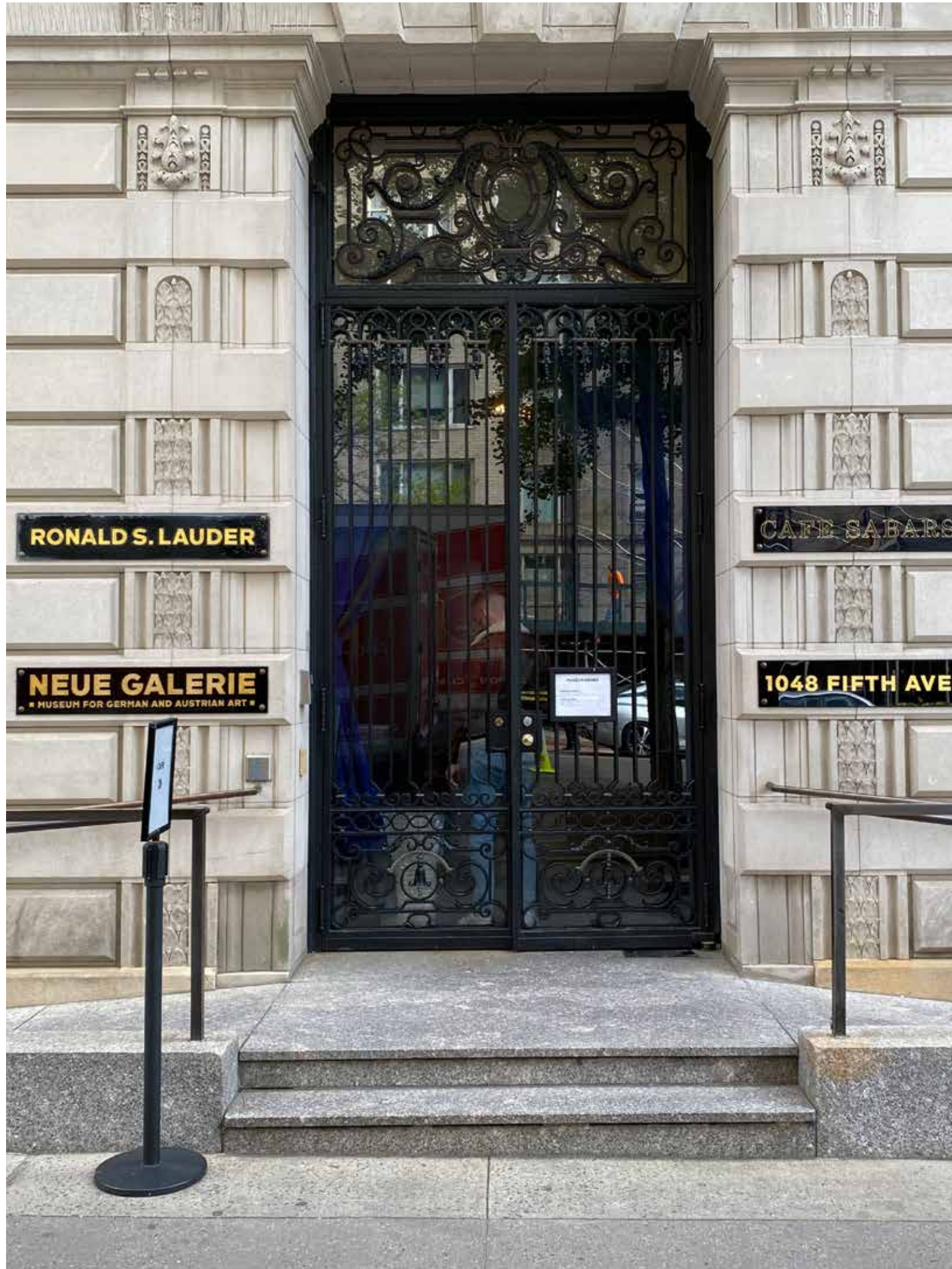
Cooper Hewitt library



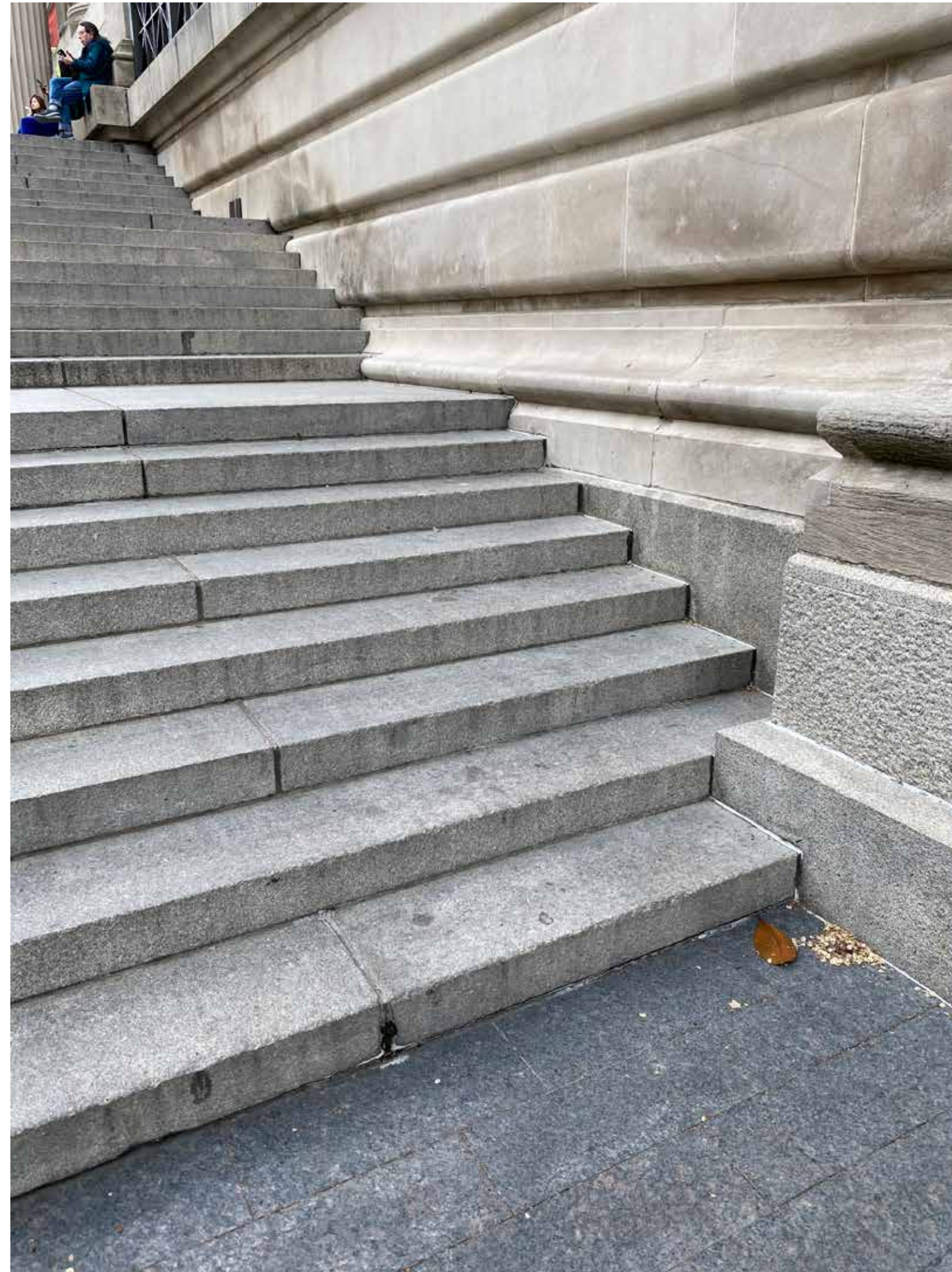
Cooper Hewitt sidewalk



# Upper East Side cultural buildings — granite paving



Neue Galerie entrance steps and ramps

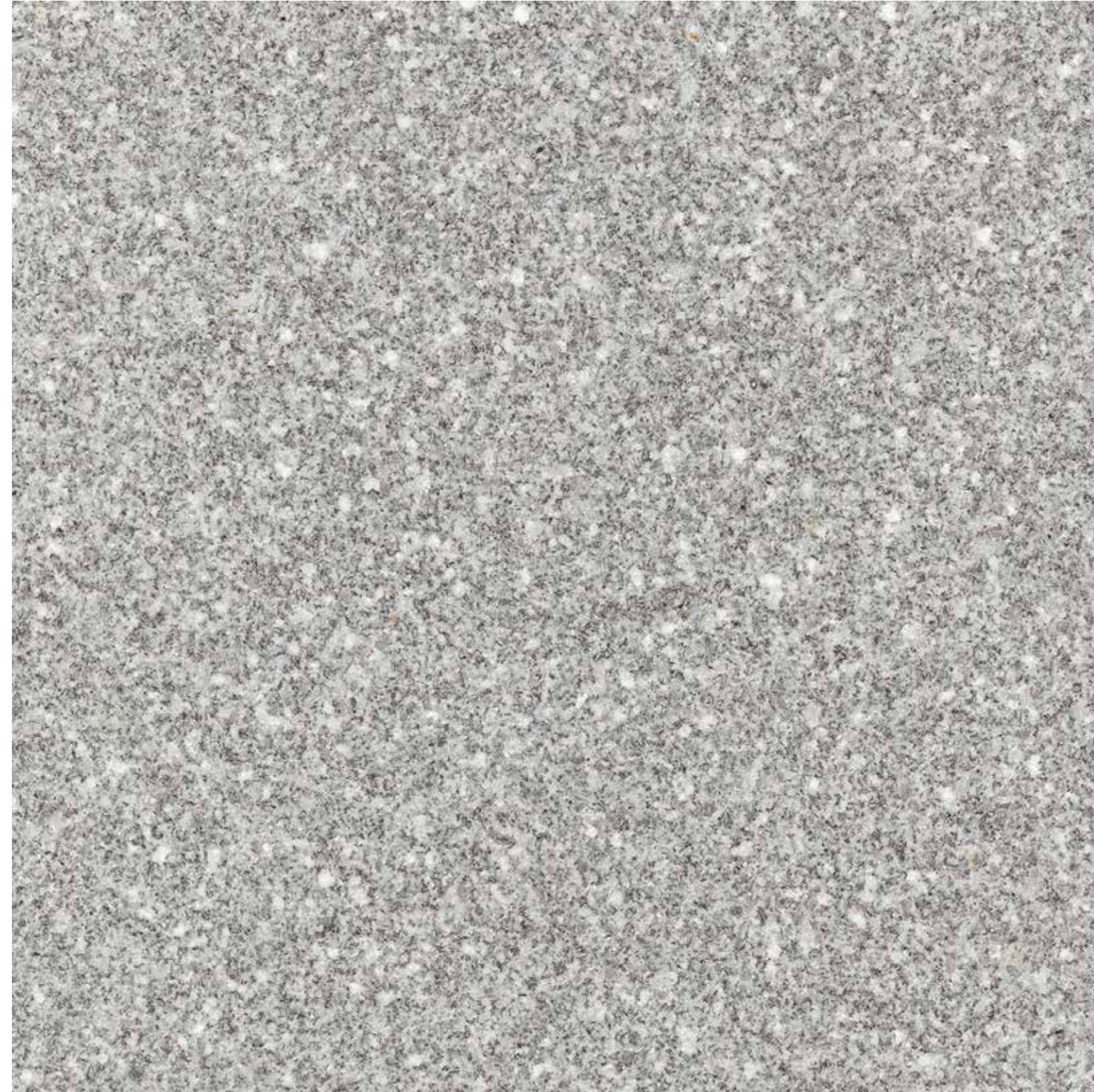


The Metropolitan Museum of Art entrance steps



# Proposed granite

- Silver-grey granite proposed, similar to the MET steps and Cooper Hewitt
- Silver hue would be lighter than concrete slabs adjacent
- Granite would likely be sourced from Vermont or New Hampshire



Proposed silver-grey granite



MET museum steps



# Material palette summary

Stair, balustrade and bench

— New solid limestone construction, similar to existing facade

Gates

— Painted steel frame with brass door handle and pivot plate

Paving

— 5' x 5' silver-grey granite paving, from external forecourt to internal vestibule

Handles and signage

— Brass/bronze detailing



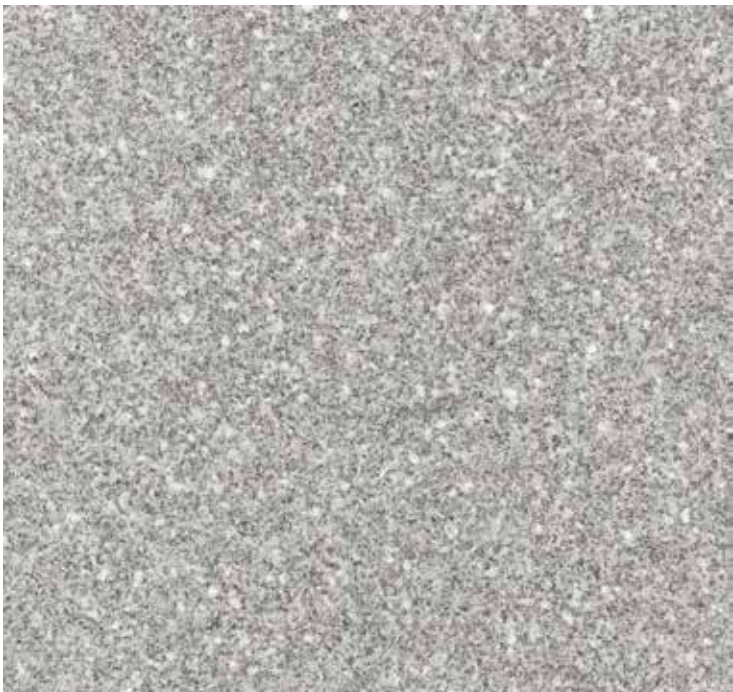
Painted steel metalwork, to match existing metalwork



Brass/bronze details to gate door handles and signage



New limestone stair and bench, to match facade

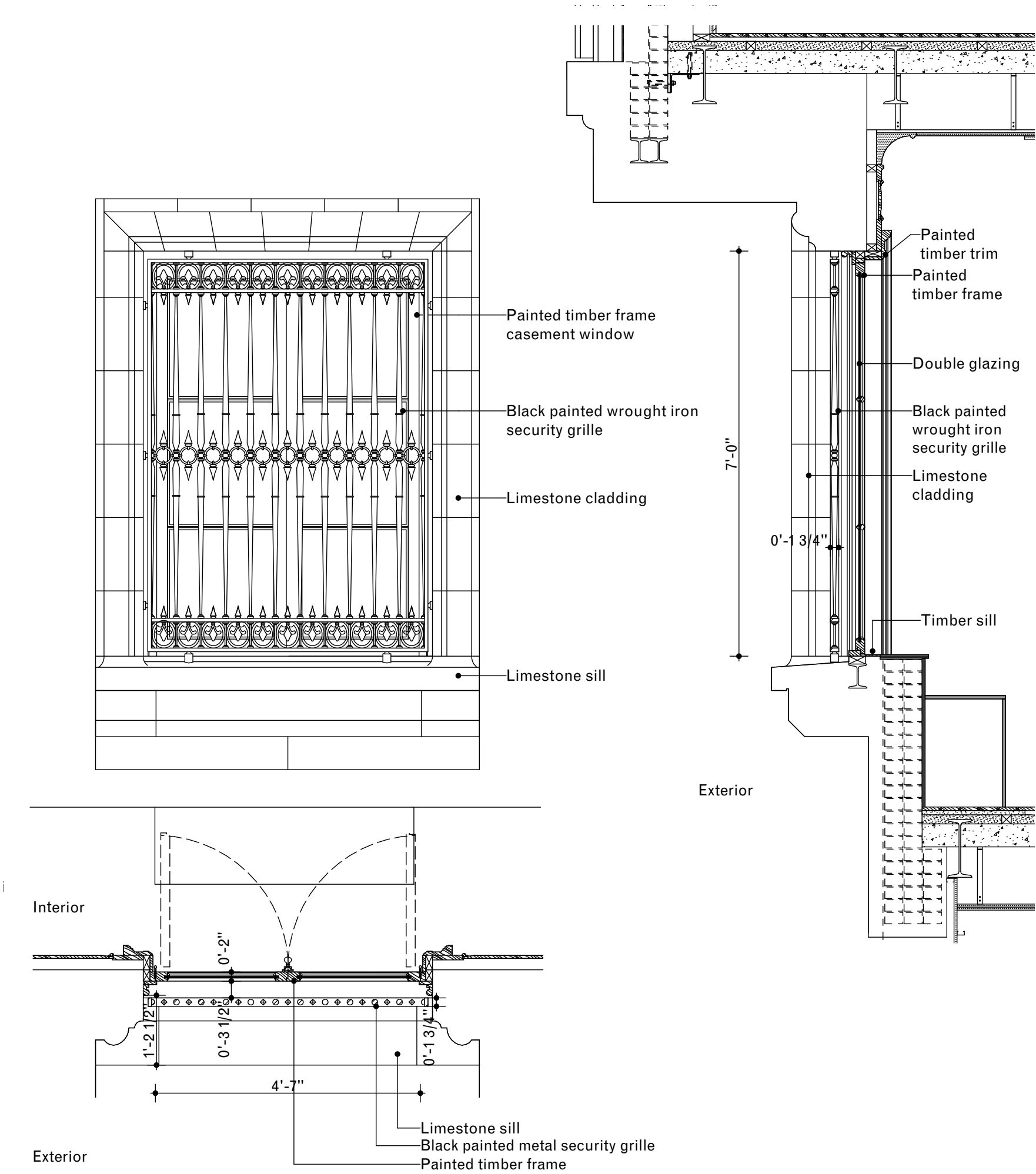


Silver-grey granite paving

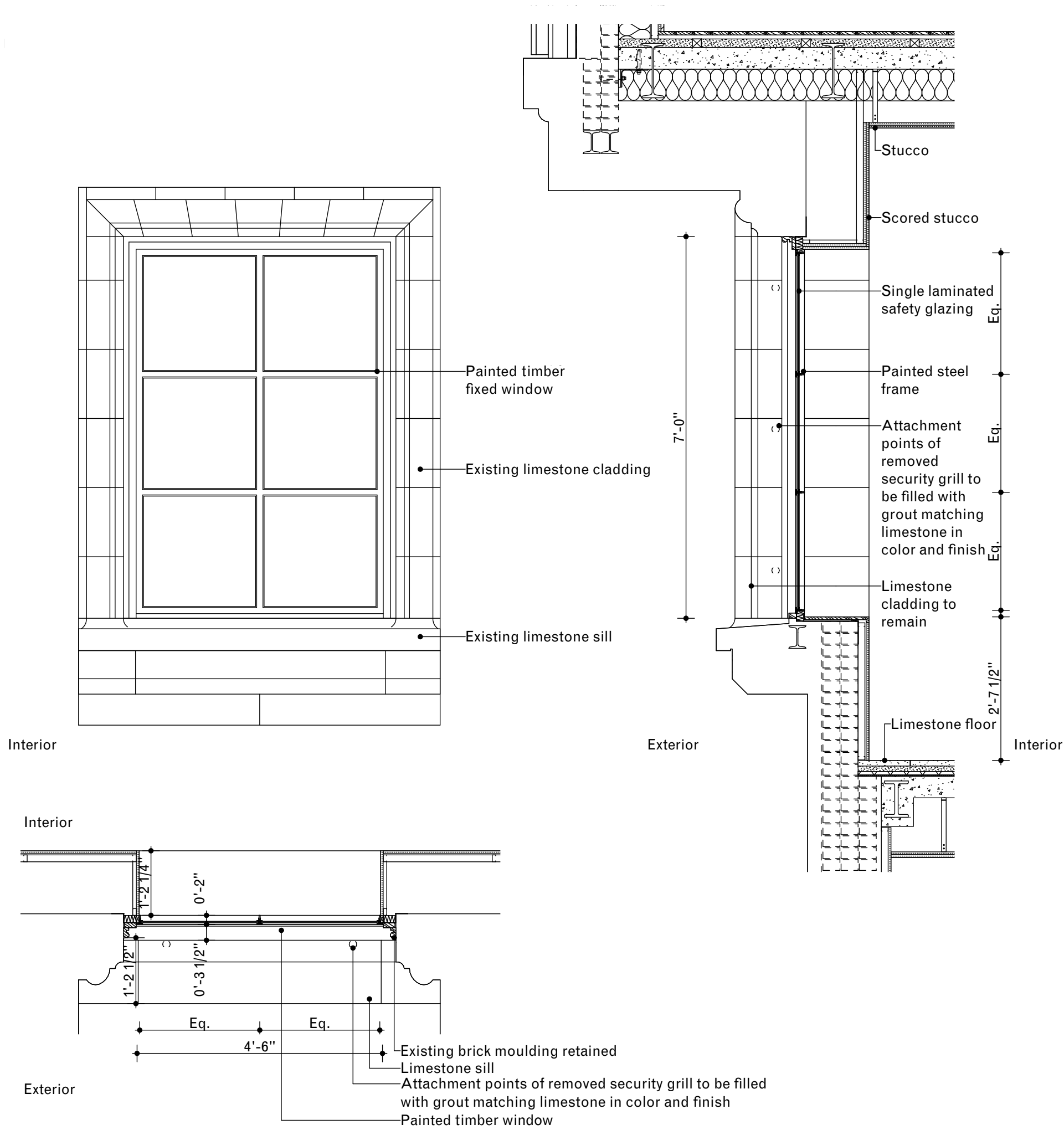


# Window

Existing timber window and security bars replaced by new fixed painted timber window



Existing window



Proposed window



# Goethe House signage

- Important to signify the cultural institution to the public
- The original Goethe House signage was a cast bronze plaque, sized to fit the stone rustication



circa. 1960s



circa. 1980s



circa. 2000s

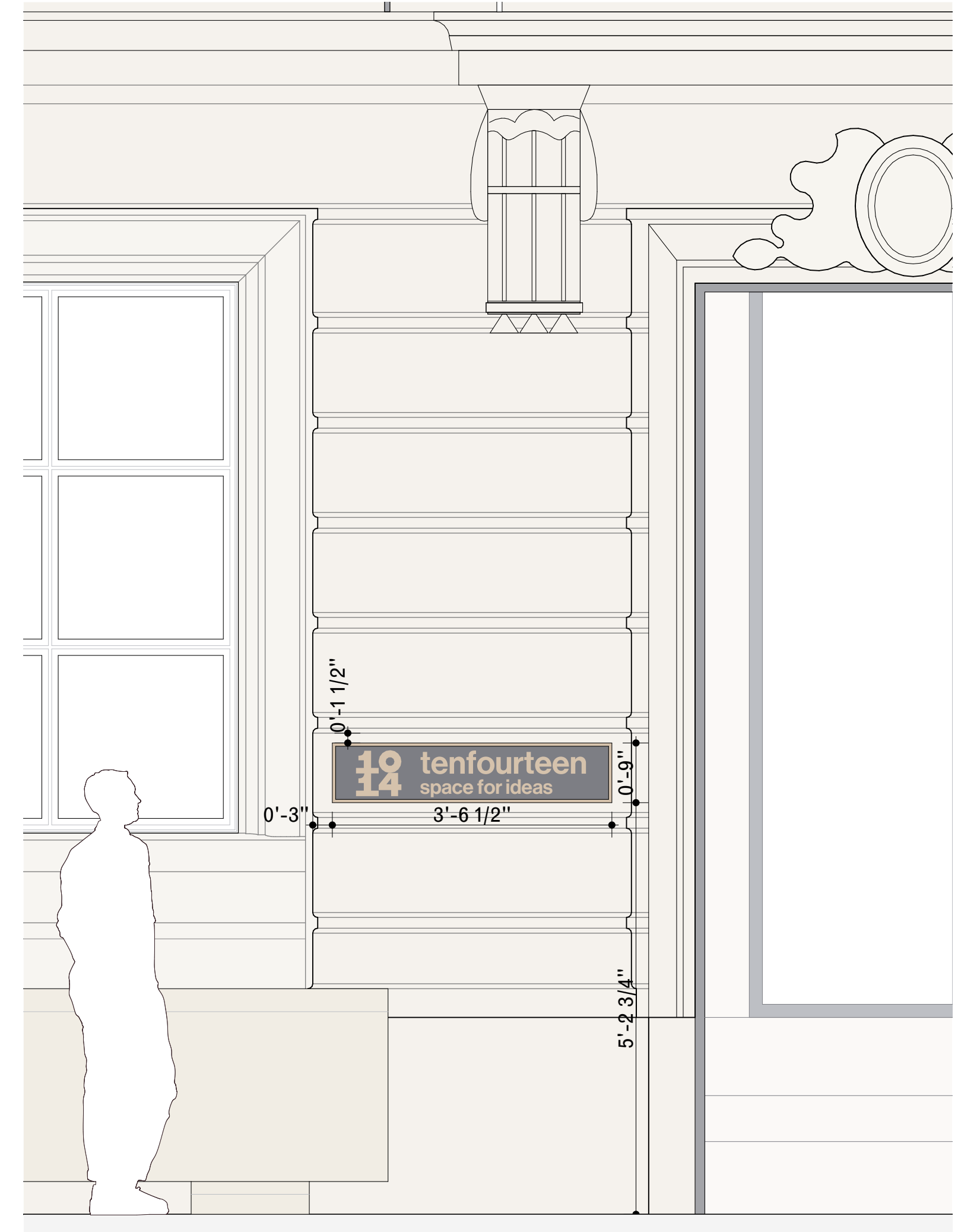


# Proposed signage

- New metal plaque would re-use former Goethe House plaque fixings
- Seeking approval for sign location, detail and graphics refinement to be developed further



Re-use previous fixings



Proposed signage plaque location



# Front area — comparison of approved and proposed





# Thank you

