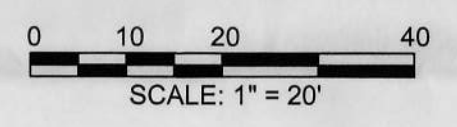


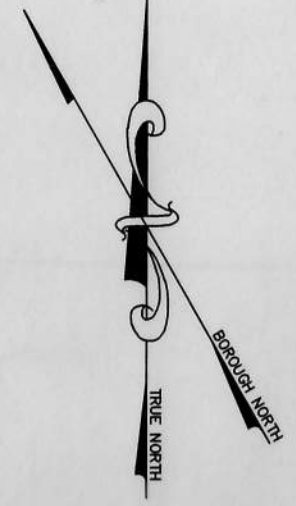
KEY MAP



- LEGEND**
- PROPERTY LINE
 - ① PHOTO NUMBER AND DIRECTION
 - ← TRAFFIC DIRECTION

LIST OF DRAWINGS

- C-1 KEY PLAN
- C-2 EXISTING PLAN
- C-3 PROPOSED PLAN
- C-4 ELEVATION PLAN
- C-5 SECTION PLAN
- C-6 DETAILS I
- C-7 DETAILS II
- C-8 DETAILS III



PLAN
SHOWING LOCATION OF
SNOW MELT SYSTEM, AND FENCED-IN AREA,
INCLUDING PLANTERS, IRRIGATION CONDUITS,
TRASH ENCLOSURE AND STORAGE

TO BE LOCATED AT
18 EAST 73RD STREET

BOROUGH OF MANHATTAN

TO ACCOMPANY APPLICATION
DATED 1/20/2023
OF

MALLOW ENTERPRISES LLC

TO THE
DEPARTMENT OF TRANSPORTATION
CITY OF NEW YORK

MALLOW ENTERPRISES LLC
BY *[Signature]*
RODRIGO VIDAL RIBEIRO, OWNER, APPLICANT

ZONING INFORMATION:
BLOCK 1387 / LOT 62
ZONING DISTRICT/MAP: R8B / 8C

- CHARACTER OF MATERIALS:**
- 111 SF OF BLUESTONE PAVEMENT
 - 31 LF OF FENCE AND SWING GATES
 - 280 LF OF ELECTRIC RADIANT HEATING SNOW MELT SYSTEM
 - 8 LF OF PEX TUBING FOR IRRIGATION CONDUIT
 - 4 PROPOSED PLANTERS (3'-10" L X 1'-4" W X 1'-4" H)
 - 2 ALUMINUM PLANTERS (1'-8" L X 1'-8" W X 1'-11" H)
 - 1 CUSTOM LOCKABLE STORAGE WITH MAILBOX (3'-0" X 2'-1" X 3'-4" H)
 - 1 CUSTOM TRASH STORAGE BOX (3'-0" X 2'-1" X 3'-4" H)

COST OF REMOVAL AND RESTORATION: \$25,000.00

PROPOSED IMPROVEMENTS SHOWN IN RED

SITE/CIVIL ENGINEER



AKRF INC.
440 PARK AVENUE SOUTH
NEW YORK, NY 10016
(212) 696-0670 (PHONE)
(212) 726-0942 (FAX)

REVISIONS

No.	DATE	DESCRIPTION



[Signature]
ROBERT CARAVELLA, P.E.

DRAWN BY JAH	CHECKED BY JC
SCALE AS SHOWN	DATE 12/2/2022

SHEET TITLE
KEY PLAN

SHEET NO.
C-1
SHEET 1 OF 8

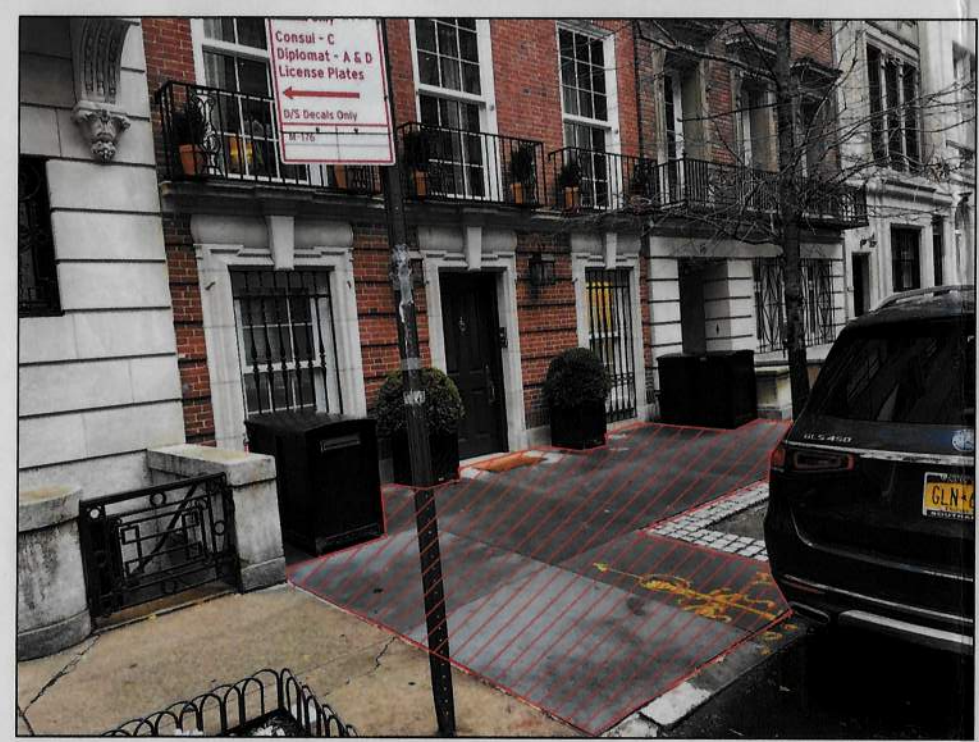


PHOTO 1
LOOKING SOUTHWEST OF FRONTAGE

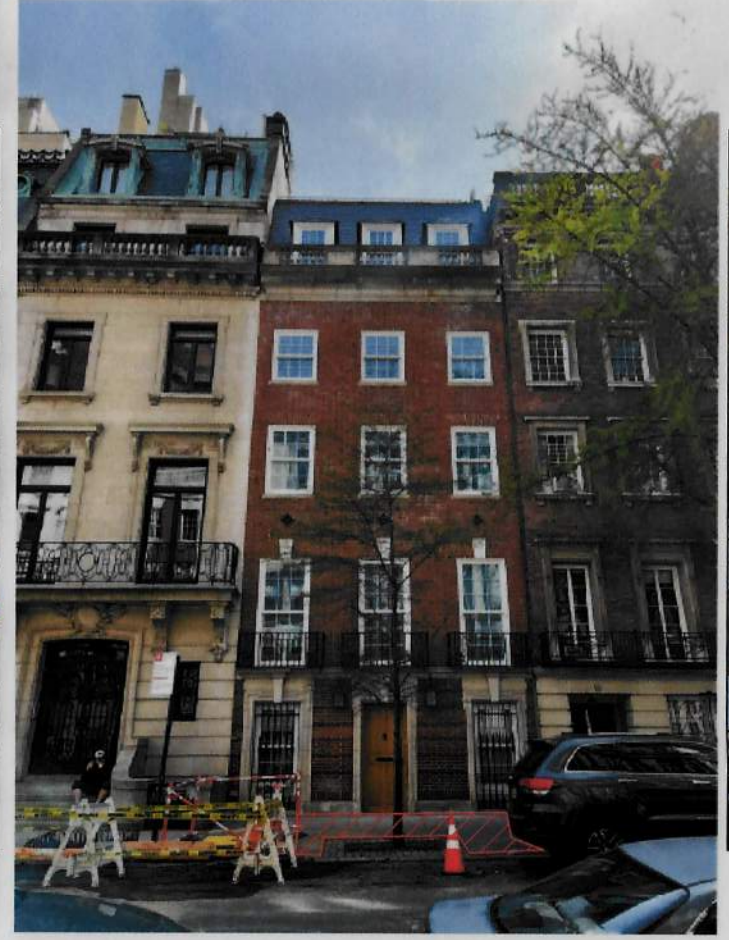


PHOTO 2
LOOKING SOUTH OF FRONTAGE

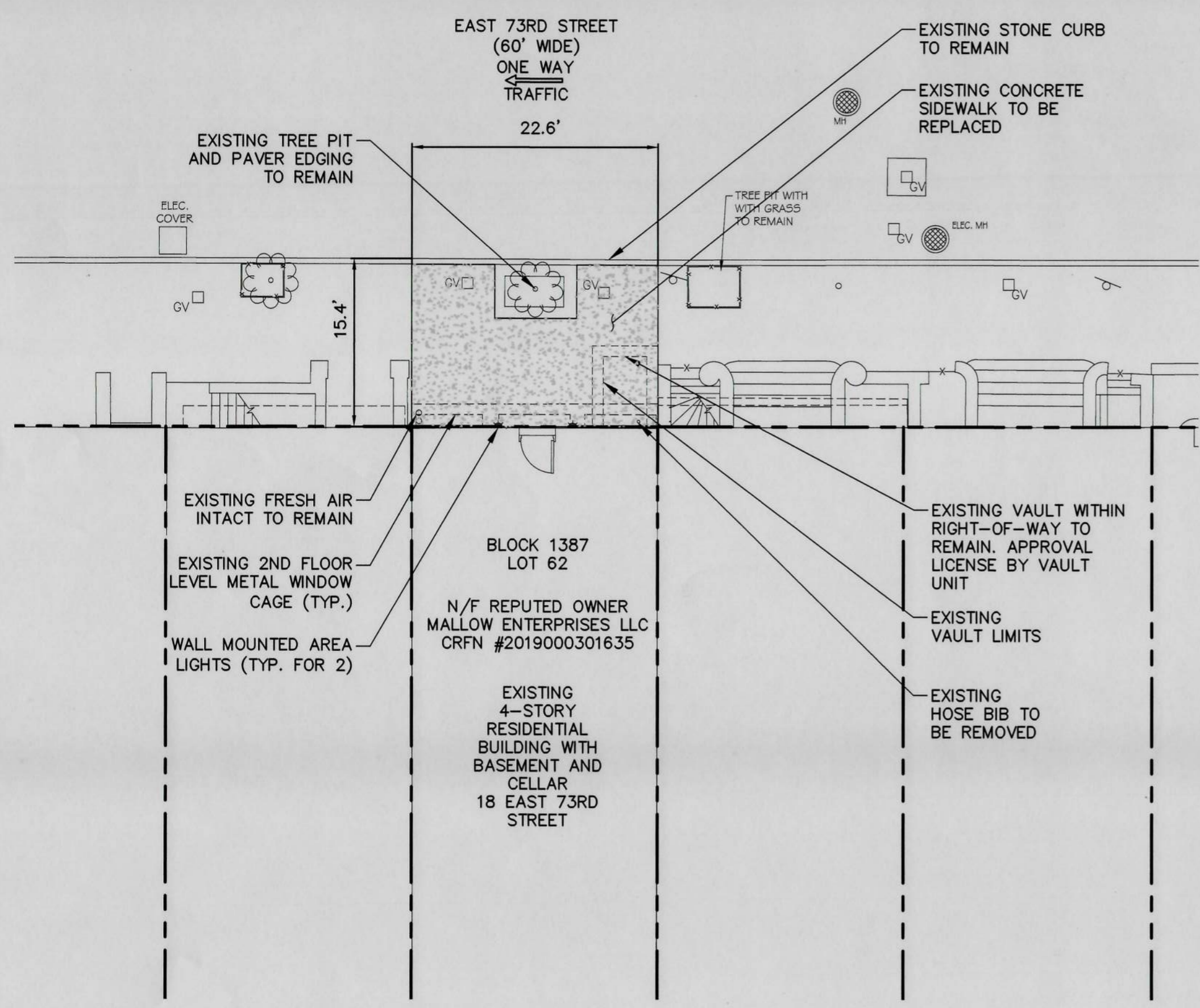
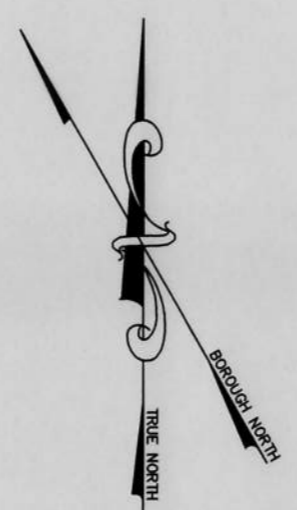


PHOTO 3
LOOKING SOUTHEAST OF FRONTAGE



PHOTO 4
LOOKING EAST OF FRONTAGE

NEW YORK STATE EDUCATION LAW 145, SECTION 7209, PROHIBITS ANY INDIVIDUAL FROM ALTERING THESE DRAWINGS AND/OR ACCOMPANYING SPECIFICATIONS IN ANY WAY, UNLESS IT IS UNDER THE DIRECT SUPERVISION OF A LICENSED PROFESSIONAL ENGINEER. IF ALTERATIONS ARE MADE, THE ALTERING ENGINEER MUST SIGN, SEAL, DATE, AND DESCRIBE THE FULL DESCRIPTION OF THE ALTERATION ON THE DRAWING AND/OR SPECIFICATIONS.



EXISTING PLAN
SCALE 1" = 10'

- LEGEND**
- X-X-X- FENCE
 - MANHOLE
 - WALL MOUNTED AREA LIGHT SIGN
 - 15' ○ DENOTES TREE & TRUNK DIAMETER
 - - - - - PROPERTY LINE
 - ▨ EXISTING SIDEWALK TO BE REMOVED
- ABBREVIATIONS**
- CONC. CONCRETE
 - MH MANHOLE
 - M.T.G. METAL TREE GUARD

PROPOSED IMPROVEMENTS SHOWN IN RED

SITE/CIVIL ENGINEER



AKRF INC.
440 PARK AVENUE SOUTH
NEW YORK, NY 10016
(212) 696-0670 (PHONE)
(212) 726-0942 (FAX)

REVISIONS

No.	DATE	DESCRIPTION

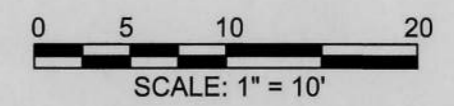


Robert D. Caravella
ROBERT CARAVELLA, P.E.

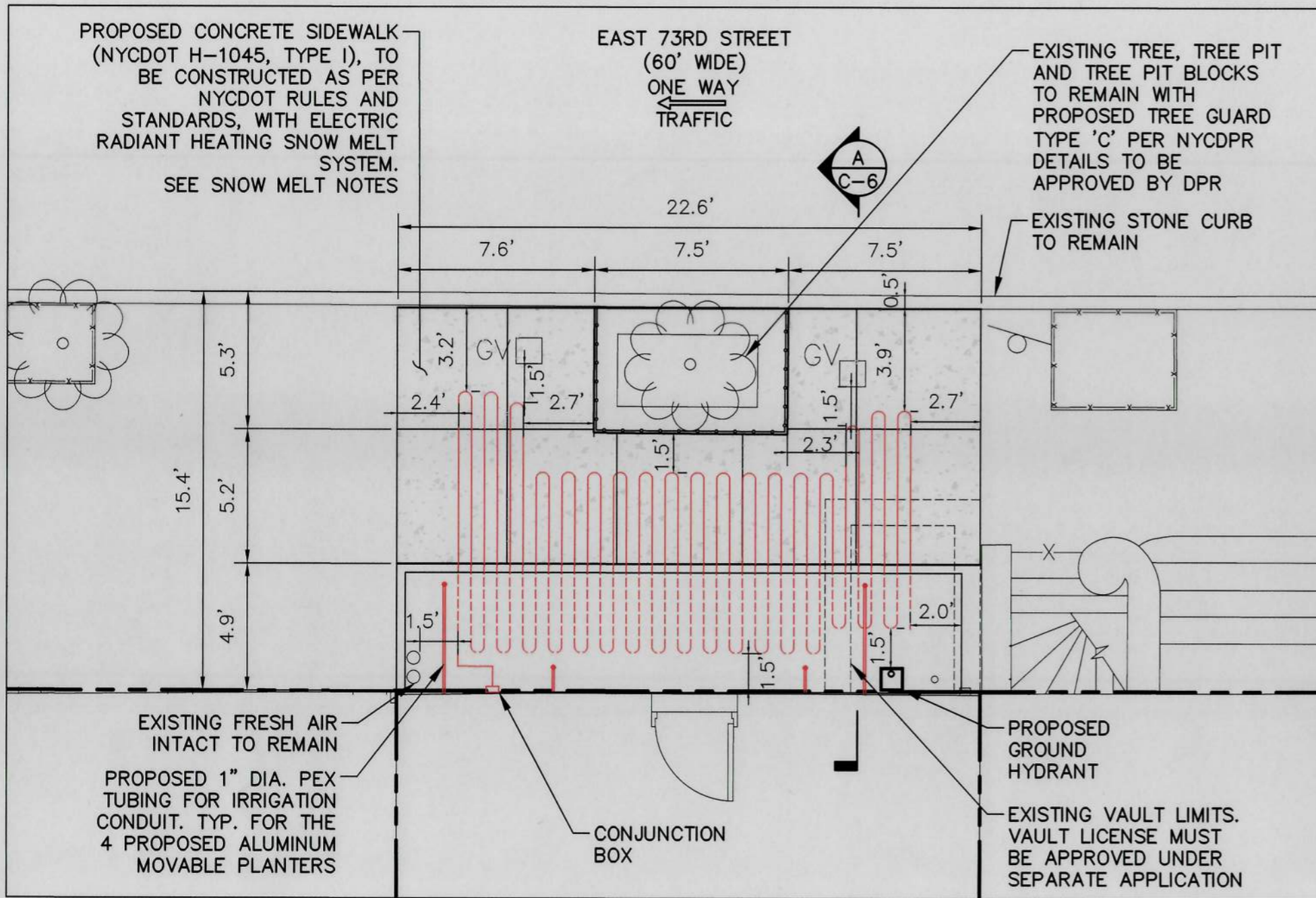
DRAWN BY JAH	CHECKED BY JC
SCALE 1" = 10'	DATE 12/2/2022

SHEET TITLE
EXISTING PLAN

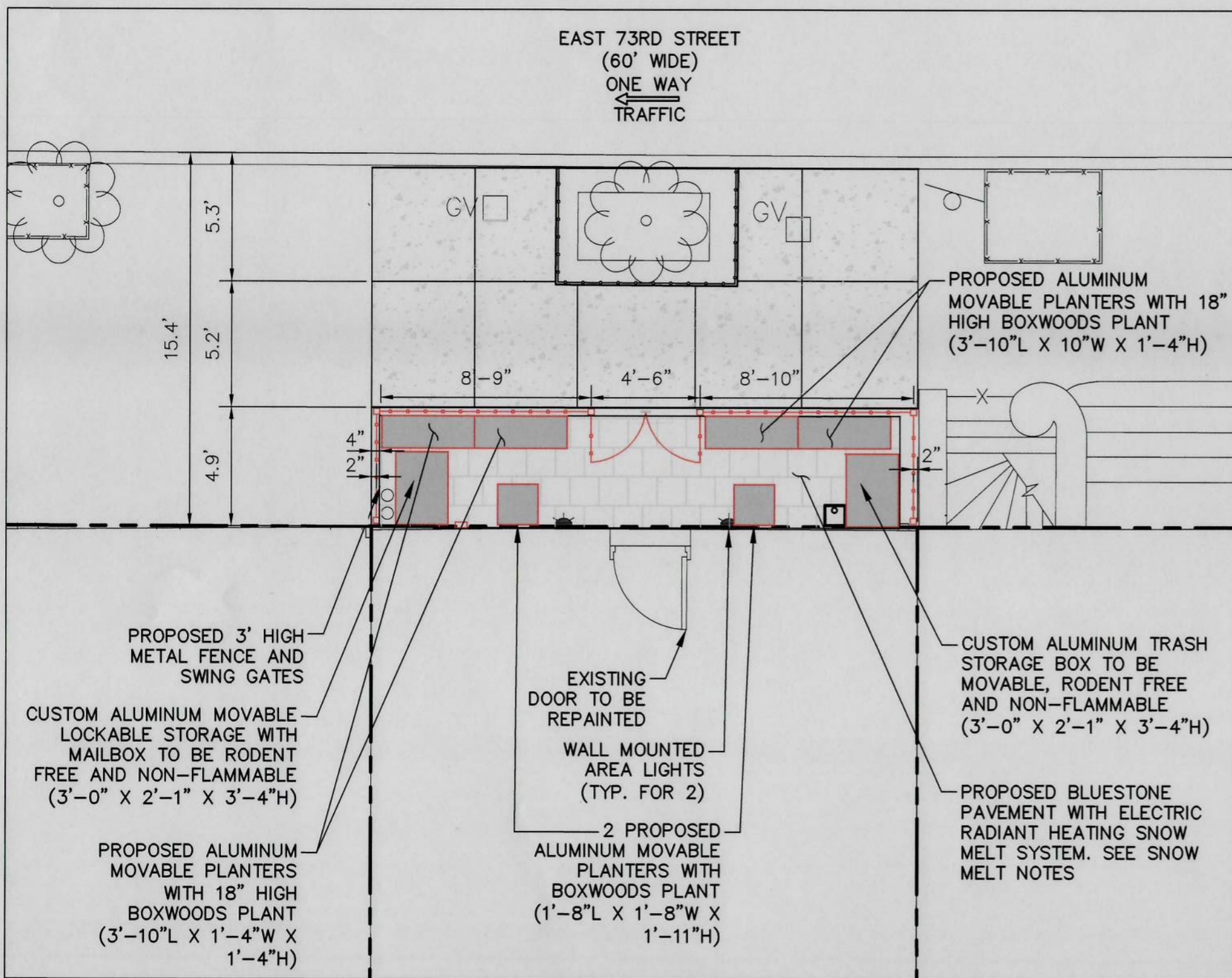
SHEET NO.
C-2
SHEET 2 OF 8



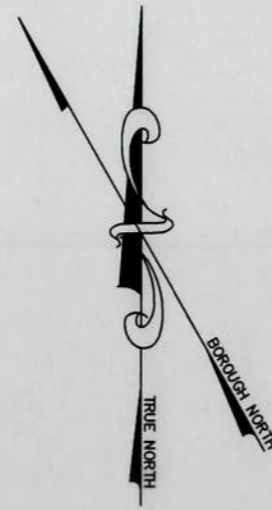
NEW YORK STATE EDUCATION LAW 145, SECTION 7209, PROHIBITS ANY INDIVIDUAL FROM ALTERING THESE DRAWINGS AND/OR ACCOMPANYING SPECIFICATIONS IN ANY WAY, UNLESS IT IS UNDER THE DIRECT SUPERVISION OF A LICENSED PROFESSIONAL ENGINEER. IF ALTERATIONS ARE MADE, THE ALTERING ENGINEER MUST SIGN, SEAL, DATE, AND DESCRIBE THE FULL DESCRIPTION OF THE ALTERATION ON THE DRAWING AND/OR SPECIFICATIONS.



SUBSURFACE LAYOUT
SCALE 1" = 5'



SURFACE LAYOUT
SCALE 1" = 5'



- LEGEND**
- PROPERTY LINE
 - - - - - PROPOSED FENCING
 - - - - - PROPOSED TREE GUARD
 - PROPOSED SNOW MELT SYSTEM UNDER CONCRETE SIDEWALK
 - - - - - PROPOSED SNOW MELT SYSTEM UNDER BLUESTONE PAVEMENT
 - PROPOSED IRRIGATION CONDUIT
 - [Pattern] PROPOSED CONCRETE SIDEWALK
 - [Pattern] PROPOSED BLUESTONE PAVEMENT
 - PROPOSED GROUND HYDRANT
 - WALL MOUNTED AREA LIGHT SIGN
 - GV □ GAS VALVE
 - ⊗ EXISTING TREE
 - V □ EXISTING VALVE COVER

SNOW MELT NOTES

1. PROPOSED SNOW MELT SYSTEM SHALL BE INSTALLED A 1'-6" MINIMUM CLEARANCE FROM EXISTING AND NEW WATER AND GAS VALVES, BUILDING WALL, PROPERTY LINES, TREE PIT AND PAVERS, HOSE BIBS, GROUND HYDRANTS, AND CURBLINE.
2. SNOW MELT SYSTEM TO BE COORDINATED WITH THE MEP FOR POWER REQUIREMENTS.

PROPOSED IMPROVEMENTS SHOWN IN RED

SITE/CIVIL ENGINEER



AKRF INC.
440 PARK AVENUE SOUTH
NEW YORK, NY 10016
(212) 696-0670 (PHONE)
(212) 726-0942 (FAX)

REVISIONS

No.	DATE	DESCRIPTION

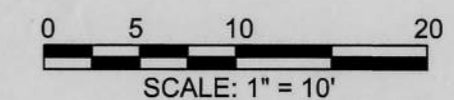


Robert Caravella
ROBERT CARAVELLA, P.E.

DRAWN BY JAH	CHECKED BY JC
SCALE 1" = 5'	DATE 12/2/2022

SHEET TITLE
PROPOSED PLAN

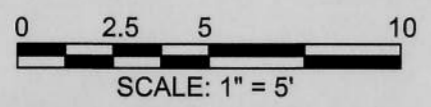
SHEET NO.
C-3



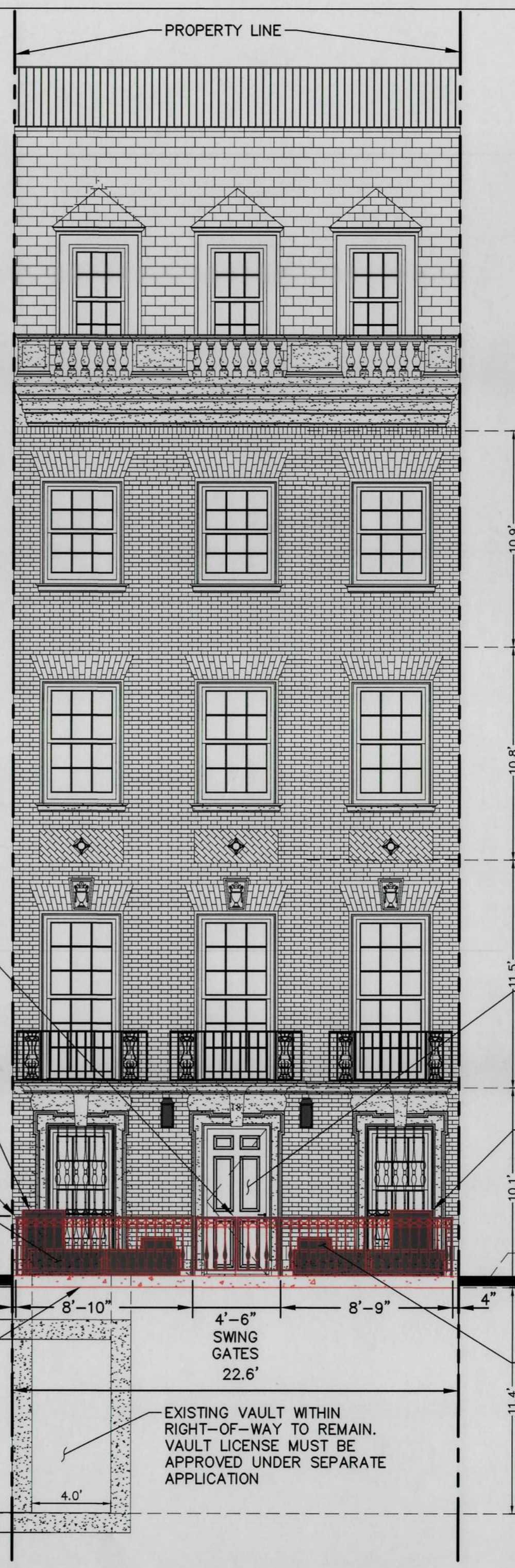
NEW YORK STATE EDUCATION LAW 145, SECTION 7209, PROHIBITS ANY INDIVIDUAL FROM ALTERING THESE DRAWINGS AND/OR ACCOMPANYING SPECIFICATIONS IN ANY WAY, UNLESS IT IS UNDER THE DIRECT SUPERVISION OF A LICENSED PROFESSIONAL ENGINEER. IF ALTERATIONS ARE MADE, THE ALTERING ENGINEER MUST SIGN, SEAL, DATE, AND DESCRIBE THE FULL DESCRIPTION OF THE ALTERATION ON THE DRAWING AND/OR SPECIFICATIONS.



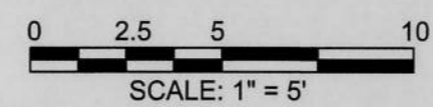
EXISTING STREET VIEW ALONG EAST 73RD STREET



NEW YORK STATE EDUCATION LAW 145, SECTION 7208, PROHIBITS ANY INDIVIDUAL FROM ALTERING THESE DRAWINGS AND/OR ACCOMPANYING SPECIFICATIONS IN ANY WAY, UNLESS IT IS UNDER THE DIRECT SUPERVISION OF A LICENSED PROFESSIONAL ENGINEER. IF ALTERATIONS ARE MADE, THE ALTERING ENGINEER MUST SIGN, SEAL, DATE, AND DESCRIBE THE FULL DESCRIPTION OF THE ALTERATION ON THE DRAWING AND/OR SPECIFICATIONS.



PROPOSED STREET VIEW ALONG EAST 73RD STREET



PROPOSED IMPROVEMENTS SHOWN IN RED

SITE/CIVIL ENGINEER



AKRF INC.
440 PARK AVENUE SOUTH
NEW YORK, NY 10016
(212) 696-0670 (PHONE)
(212) 726-0942 (FAX)

REVISIONS

No.	DATE	DESCRIPTION

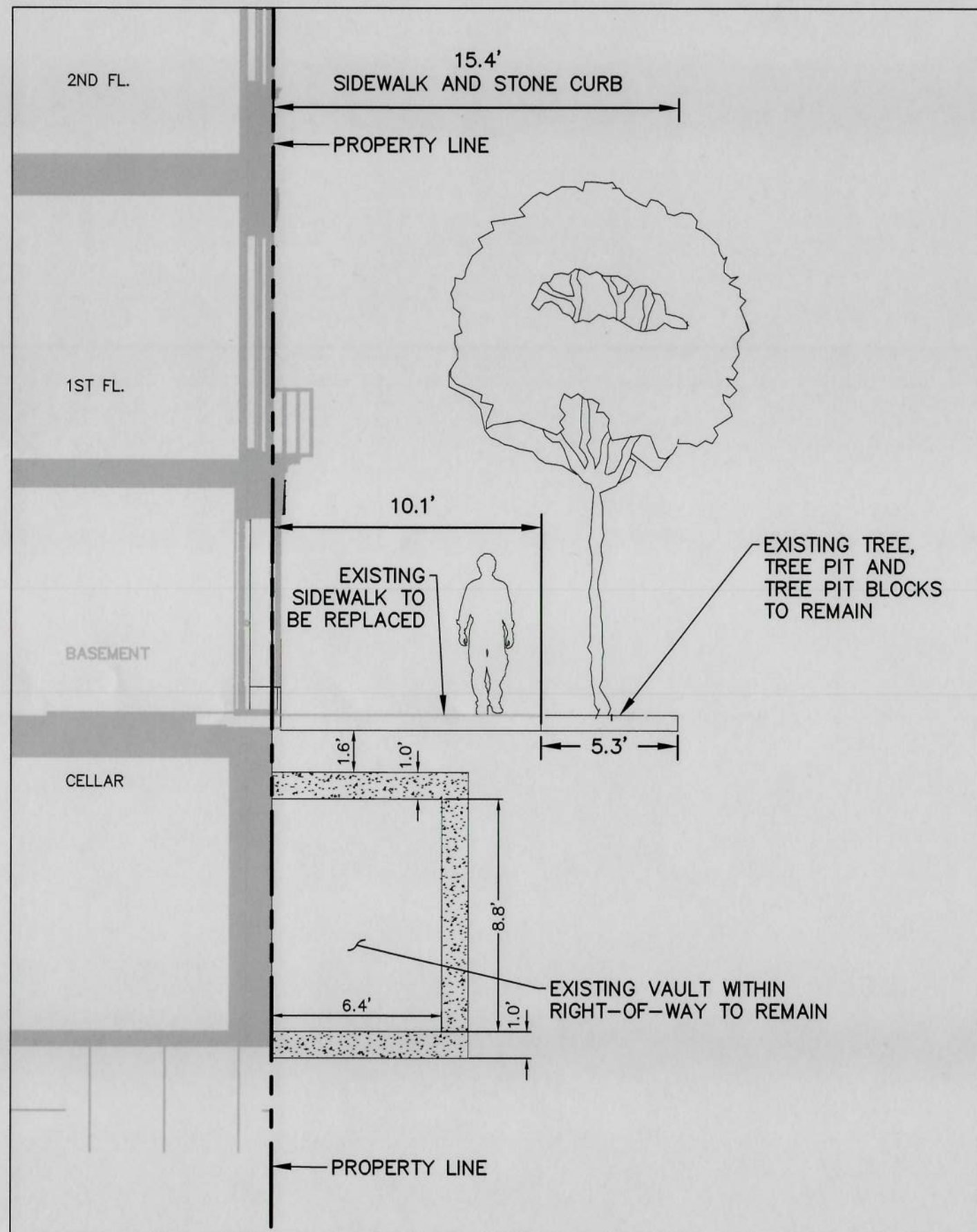


ROBERT CARAVELLA, P.E.

DRAWN BY JAH	CHECKED BY JC
SCALE 1" = 5'	DATE 12/2/2022

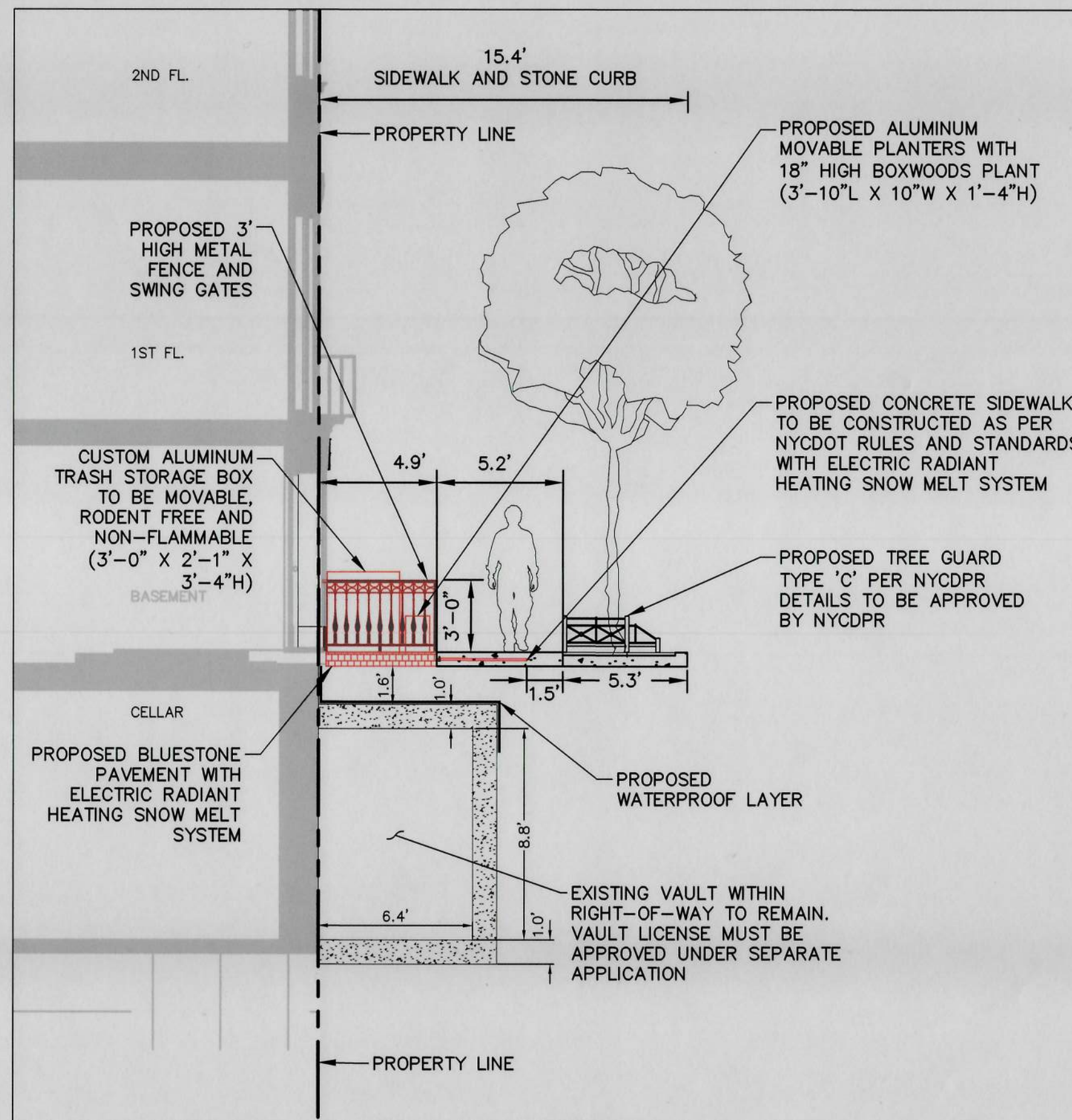
SHEET TITLE
ELEVATION PLAN

SHEET NO.
C-4
SHEET 4 OF 8



EXISTING STREET VIEW FROM EAST 73RD STREET

0 2.5 5 10
SCALE: 1" = 5'



PROPOSED SECTION VIEW FROM EAST 73RD STREET

0 2.5 5 10
SCALE: 1" = 5'

PROPOSED IMPROVEMENTS SHOWN IN RED

SITE/CIVIL ENGINEER



AKRF INC.
440 PARK AVENUE SOUTH
NEW YORK, NY 10016
(212) 696-0670 (PHONE)
(212) 726-0942 (FAX)

REVISIONS

No.	DATE	DESCRIPTION



Robert D. Caravella
ROBERT CARAVELLA, P.E.

DRAWN BY: JAH
CHECKED BY: JC

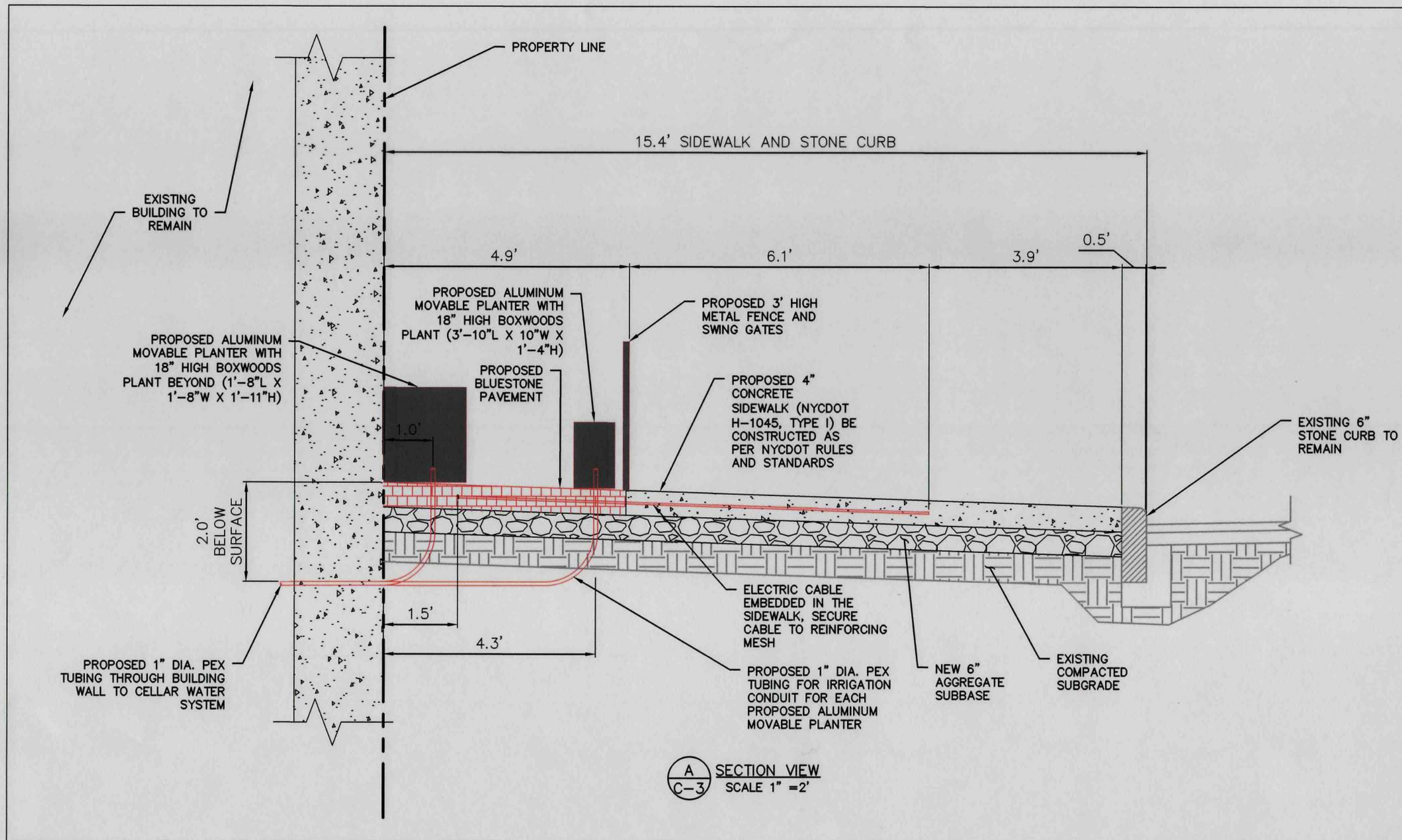
SCALE: 1" = 5'
DATE: 12/2/2022

SHEET TITLE
SECTION PLAN

SHEET NO.
C-5

SHEET 5 OF 8

NEW YORK STATE EDUCATION LAW 145, SECTION 7209, PROHIBITS ANY INDIVIDUAL FROM ALTERING THESE DRAWINGS AND/OR ACCOMPANYING SPECIFICATIONS IN ANY WAY, UNLESS IT IS UNDER THE DIRECT SUPERVISION OF A LICENSED PROFESSIONAL ENGINEER. IF ALTERATIONS ARE MADE, THE ALTERING ENGINEER MUST SIGN, SEAL, DATE, AND DESCRIBE THE FULL DESCRIPTION OF THE ALTERATION ON THE DRAWING AND/OR SPECIFICATIONS.



PROPOSED IMPROVEMENTS SHOWN IN RED

SITE/CIVIL ENGINEER



AKRF INC.
 440 PARK AVENUE SOUTH
 NEW YORK, NY 10016
 (212) 696-0670 (PHONE)
 (212) 726-0942 (FAX)

REVISIONS

No.	DATE	DESCRIPTION

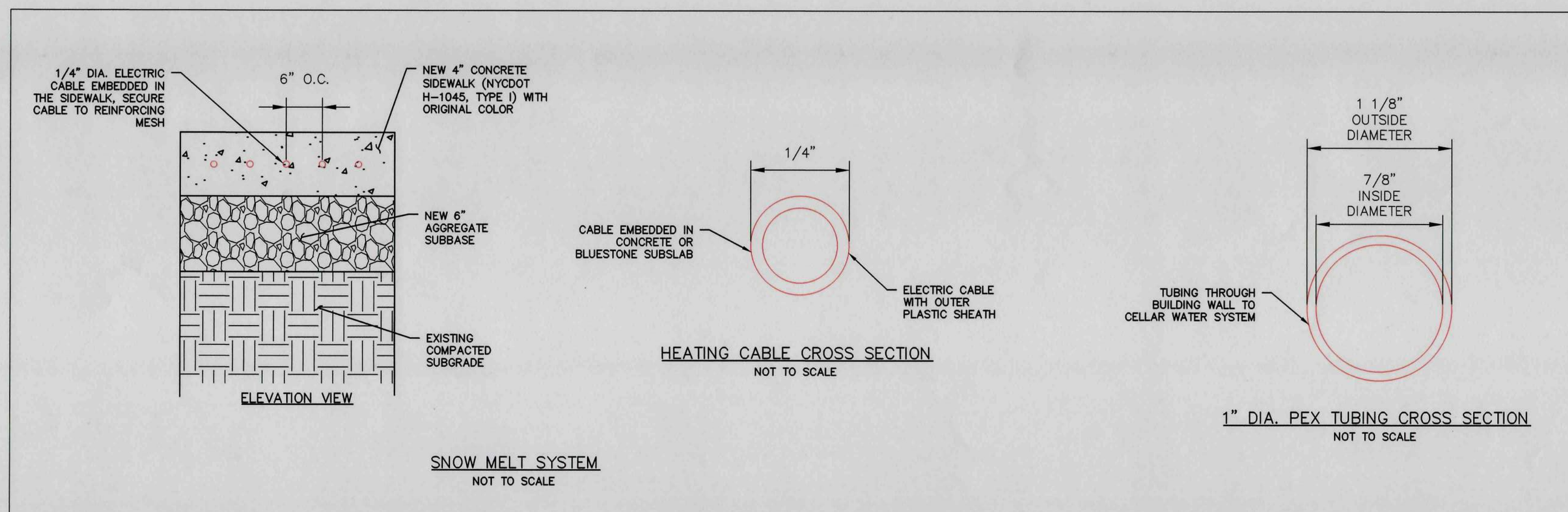


Robert D. Caravella
 ROBERT CARAVELLA, P.E.

DRAWN BY JAH	CHECKED BY JC
SCALE AS SHOWN	DATE 12/2/2022

SHEET TITLE
DETAILS I

SHEET NO.
C-6
 SHEET 6 OF 8





MAILSLOT WITH CUSTOM MAILBOX ON THE INTERIOR FACE OF THE STORAGE DOOR

PROPOSED LOCKABLE STORAGE
NOT TO SCALE

MetroBox
THE METROBOX COMPANY LLC

SPECIFICATION

Overall size: 40" W 28" D 40" H
 Door clearance: 32.5" from top of floor to door frame
 Material: Aluminum extrusion and plate
 Wall panel: UV treated perforated PVC
 Floor plate: 1/8" thick aluminum diamond plate
 Hardware: Stainless steel
 Finish: Satin black powder coat
 Weight: 110 lbs
 Load capacity: Not to exceed 150 lbs
 Warranty: Three years

The gas springs assist with the lifting of the top lid. To prevent injury and damage, DO NOT allow the lid to free fall, replace gas springs when pressure weakens.

OPTIONAL COMBINATION LOCK

- The KIDDE combination lock is a programmable keyless push button lock.
- The lock turns 90 degrees to lock or unlock. The lock can stay unlocked.
- A lock housing is provided to protect it from the elements. The lock is pre assembled in the lock housing. Installed using tamper proof screws.
- Changeable combination. Made for outdoor use.
- There is NO master combination that CAN UNLOCK a programmed combination. Please record and remember your combination before installing the lock or we can program the combination for you and install the lock.

The locking option expands the performance of the bin. Use your judgement and will to adapt this alternative to best suit your needs.

LIMITED WARRANTY

The warranty is extended solely to the original purchaser for a three year period from date of purchase against defects in material, parts and workmanship under normal use. The warranty does not cover theft, vandalism, negligence, tampering or improper use.

The MetroBox Company reserves the right to assess the nature of the defects within the warranty period and to determine the best course of action to remedy the defect. This warranty excludes scratches, dents, etc caused by wear and tear under normal use or color fading due to exposure to the elements over time. Specification subject to change without notice.

THE METROBOX COMPANY LLC 85 SPINLET BROOKLYN NY 11233 3174 780 368 F 733 443 484 B INFO@METROBOX.COM



PROPOSED TRASH ENCLOSURE
NOT TO SCALE

MetroBox
THE METROBOX COMPANY LLC

SPECIFICATION

Overall size: 54" W 28" D 40" H (front 33")
 Door clearance: 28" from top of floor to door frame
 Material: Aluminum extrusion and plate
 Wall panel: UV treated perforated PVC
 Floor plate: 1/8" thick aluminum diamond plate
 Hardware: Stainless steel
 Finish: Satin black powder coat
 Weight: 115 lbs
 Load capacity: Not to exceed 150 lbs
 Warranty: Three years

The spring loaded mechanism assists with the lifting of the top lid. To prevent injury and damage, DO NOT allow the lid to free fall.

OPTIONAL KEYED SLAM LOCK

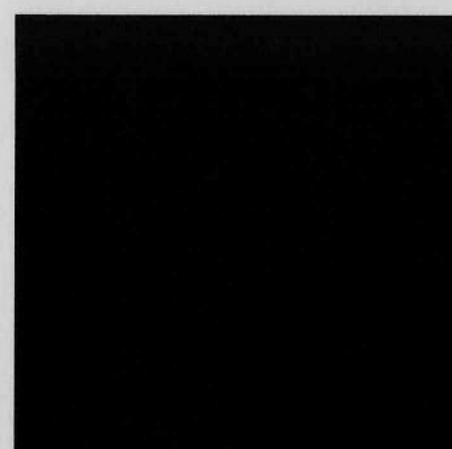
- The Slamlock functions as a slam lock. It can not stay unlocked.
- Use the key to unlock and open the lid, the lock automatically locks after closing the lid.
- Apply 3 in 1 oil and de-icing fluid to prevent key from sticking and freezing.
- 2 keys provided per lock. Keys are US standard # 81 size and can be duplicated.
- Keep lock hole covered at all times to prevent dust and moisture from entering key hole.

LIMITED WARRANTY

The warranty is extended solely to the original purchaser for a three year period from date of purchase against defects in material, parts and workmanship under normal use. The warranty does not cover theft, vandalism, negligence, tampering or improper use.

The MetroBox Company reserves the right to assess the nature of the defects within the warranty period and to determine the best course of action to remedy the defect. This warranty excludes scratches, dents, etc caused by wear and tear under normal use or color fading due to exposure to the elements over time.

THE METROBOX COMPANY LLC 85 SPINLET BROOKLYN NY 11233 3174 780 368 F 733 443 484 B INFO@METROBOX.COM



FENCE AND TREE GUARD
COLOR - RUST-OLEUM FLAT BLACK (MODEL # 7776502)

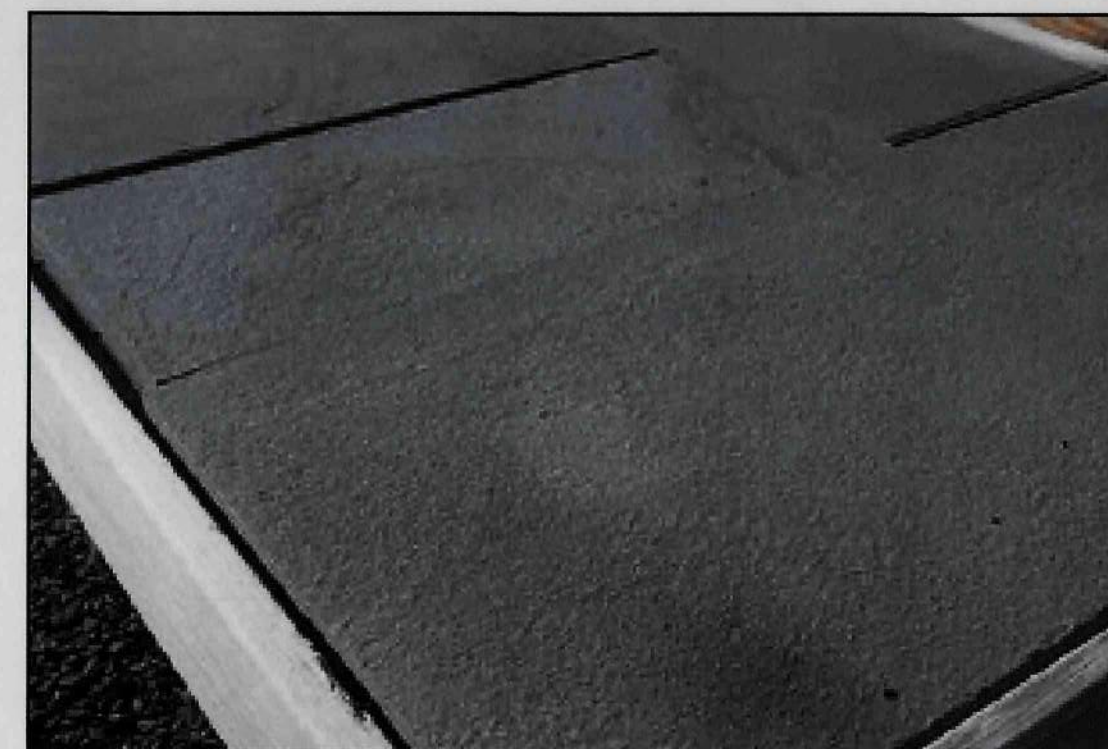
PROPOSED TREE GUARD PAINT
NOT TO SCALE

PLANTERS - SIDE OF GATE

Window / 36"L x 10"W x 16"H (black)
 Ground level / 46"L x 10"W x 16"H (black)

All planters are made from a heavy-gauge, marine grade, recycled 5052 Aluminum Alloy. Completely powder coated formulated to withstand UV radiation, temperature changes and other severe weather conditions. The powder coating process does not include any solvents or create Volatile Organic Compounds that damage the environment.

PLANTER DETAILS - SIDE OF GATE
NOT TO SCALE



SELECT BLUE-BLUE BLUESTONE, 1 1/2" THICK, SAWN FINISH. MUDSET WITH 3/8" JOINTS

BLUESTONE PAVEMENT DETAILS
NOT TO SCALE



ACCENTS OF FRANCE - "TRELLAGE PLANTER". 20" SQUARE ALUMINUM. BLACK FINISH.

20"

ITEM EXTERIOR

20" W:20-3/4" D:20-3/4" H:22-3/4" w/finial H:26-3/4"

ALUMINUM TRELLAGE PLANTERS 20"
 DIMENSIONS 20-3/4"W X 20-3/4"D X 22-3/4"H (26-3/4" WITH FINIALS)
 ALUMINUM LINER WITH HOLES FOR DRAINAGE
 PAINTED BLACK COLOR:
 PLACEMENT: 2X ON EITHER SIDE OF THE MAIN ENTRY DOOR

ALUMINUM PLANTERS - SIDE OF ENTRY
NOT TO SCALE

PROPOSED IMPROVEMENTS SHOWN IN RED

SITE/CIVIL ENGINEER



AKRF INC.
 440 PARK AVENUE SOUTH
 NEW YORK, NY 10016
 (212) 696-0670 (PHONE)
 (212) 726-0942 (FAX)

REVISIONS

No.	DATE	DESCRIPTION



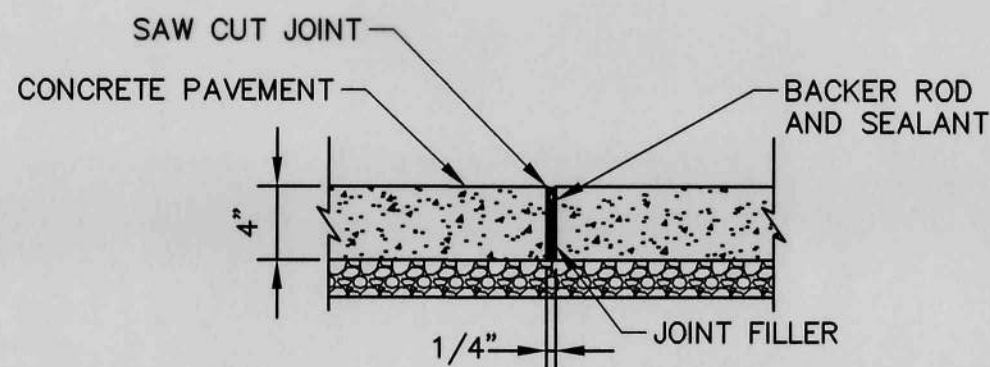
Robert D. Caravella
 ROBERT CARAVELLA, P.E.

DRAWN BY JAH	CHECKED BY JC
SCALE AS SHOWN	DATE 12/2/2022

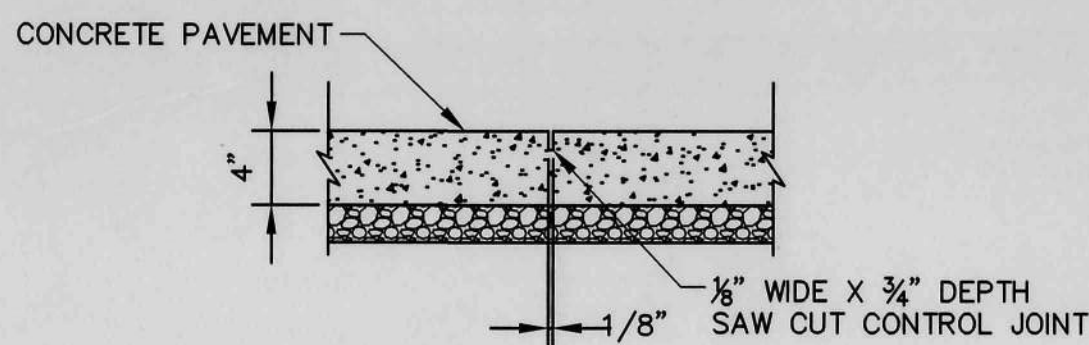
SHEET TITLE
DETAILS II

SHEET NO.
C-7

NEW YORK STATE EDUCATION LAW 145, SECTION 7209, PROHIBITS ANY INDIVIDUAL FROM ALTERING THESE DRAWINGS AND/OR ACCOMPANYING SPECIFICATIONS IN ANY WAY, UNLESS IT IS UNDER THE DIRECT SUPERVISION OF A LICENSED PROFESSIONAL ENGINEER. IF ALTERATIONS ARE MADE, THE ALTERING ENGINEER MUST SIGN, SEAL, DATE AND DESCRIBE THE FULL DESCRIPTION OF THE ALTERATION ON THE DRAWING AND/OR SPECIFICATIONS.

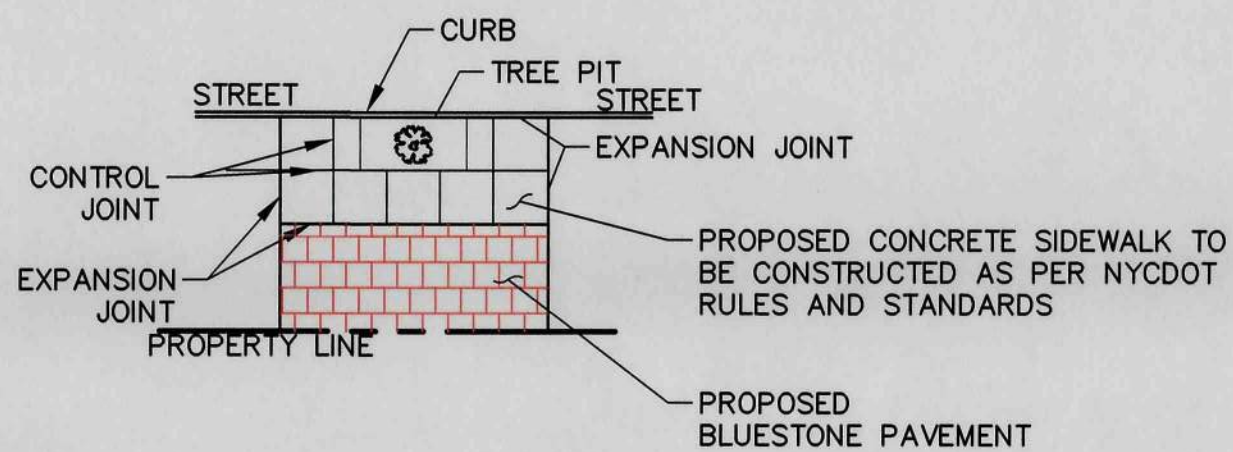


SECTION EXPANSION JOINT



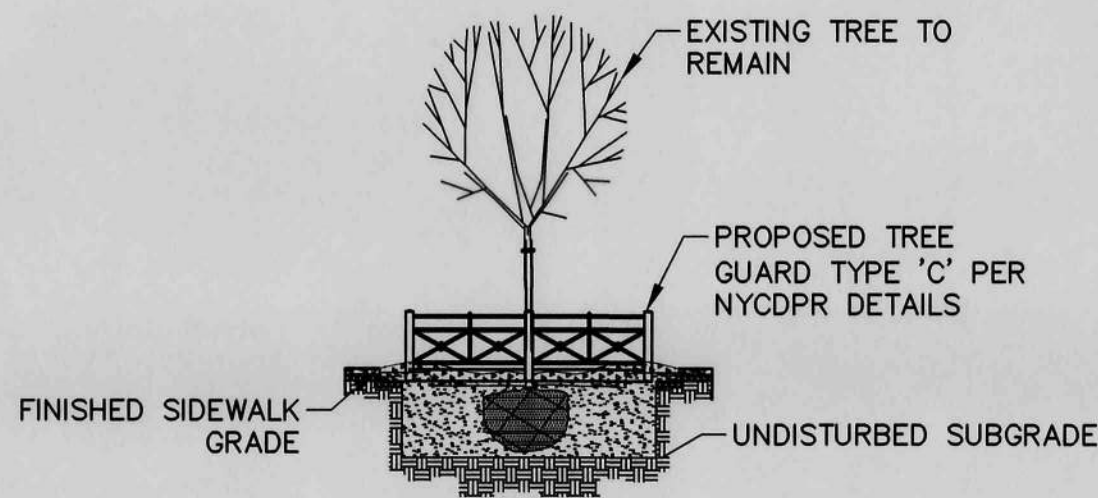
SECTION CONTROL JOINT

TYPICAL 4" CONCRETE JOINTS (NYCDOT H-1045, TYPE I)
NOT TO SCALE

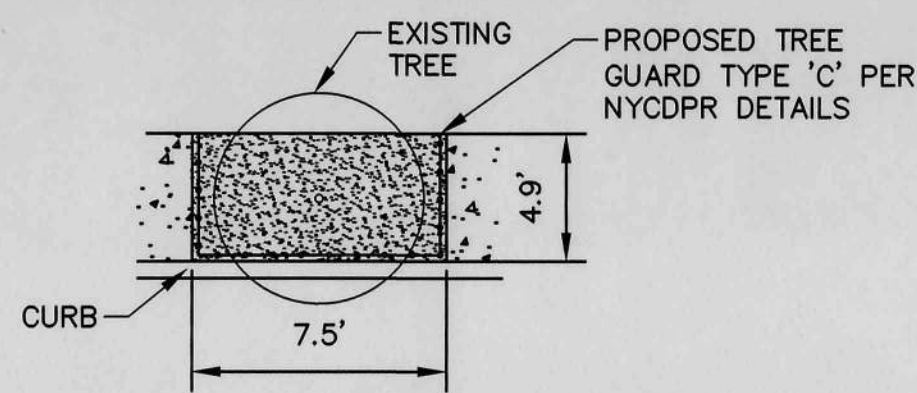


SIDEWALK LAYOUT
NOT TO SCALE

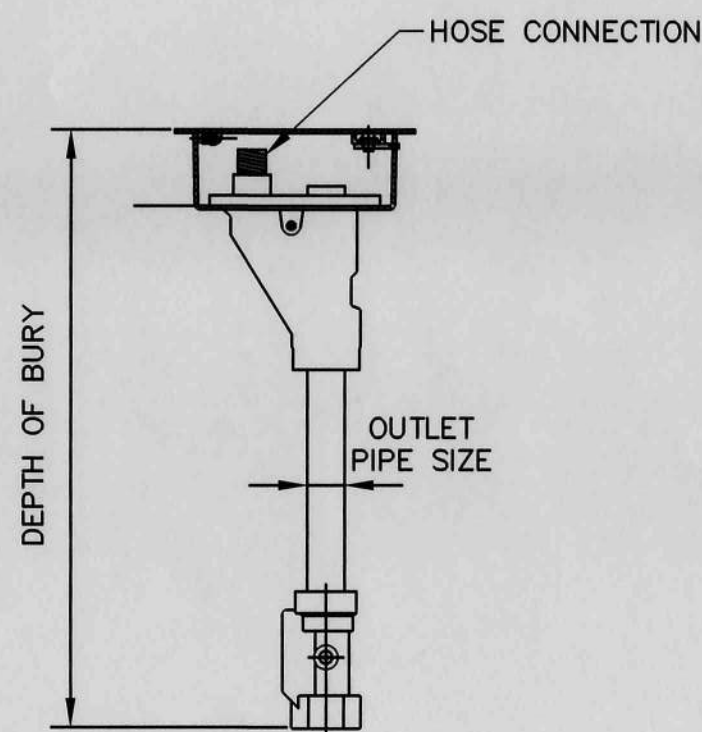
- NOTES:
1. CONTRACTOR TO REFER TO THE SITE SURVEY DRAWING FOR THE LOCATION OF ALL SURFACE AND UNDERGROUND FACILITIES ALONG THE PROJECT SITE.
 2. THE 5'X5' SIDEWALK CONTROL JOINT LAYOUT INDICATED ON THE PLAN IS FOR INFORMATIONAL PURPOSES ONLY. CONTRACTOR IS RESPONSIBLE FOR CONSTRUCTING JOINTS IN ACCORDANCE WITH NYCDOT STANDARDS.
 3. EXPANSION JOINTS SHALL BE INSTALLED EVERY 20'; ALONG CURB, AND ALONG PROPERTY LINE.



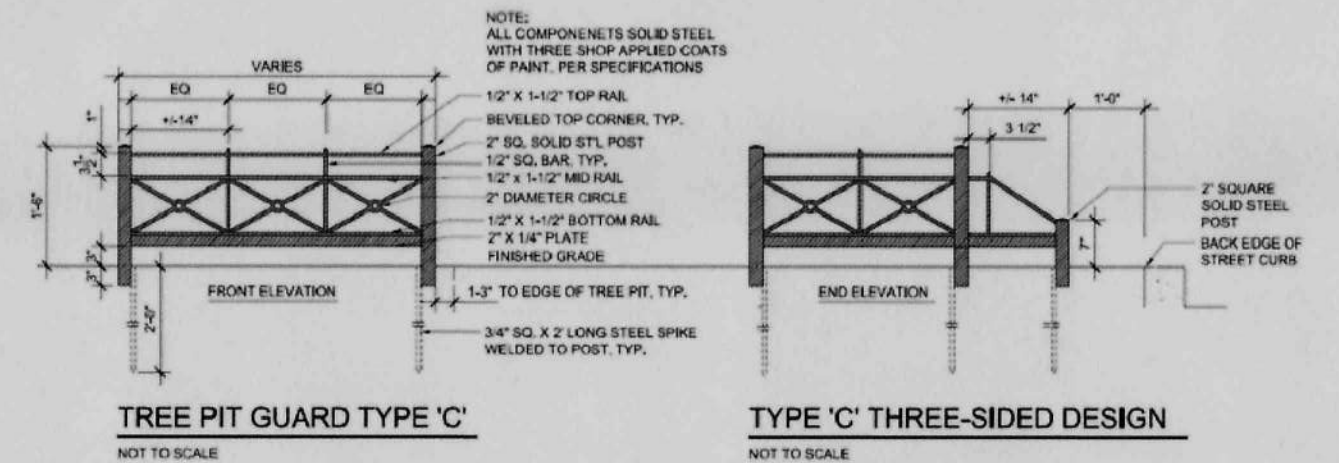
SECTION VIEW



PLAN VIEW
TYPICAL SIDEWALK/STREET TREE PIT
NOT TO SCALE



GROUND HYDRANT
NOT TO SCALE



TREE PIT GUARD TYPE 'C'
NOT TO SCALE

TYPE 'C' THREE-SIDED DESIGN
NOT TO SCALE

TREE GUARD TYPE 'C' PER
NYCDPR DETAILS
NOT TO SCALE
TO BE APPROVED BY PDR

PROPOSED IMPROVEMENTS SHOWN IN RED

SITE/CIVIL ENGINEER



AKRF INC.
440 PARK AVENUE SOUTH
NEW YORK, NY 10016
(212) 696-0670 (PHONE)
(212) 726-0942 (FAX)

REVISIONS

No.	DATE	DESCRIPTION



ROBERT CARAVELLA, P.E.

DRAWN BY: JAH
CHECKED BY: JC

SCALE: AS SHOWN
DATE: 12/2/2022

SHEET TITLE

DETAILS III

SHEET NO.

C-8

SHEET 8 OF 8