

40 EAST 72ND STREET

NEW YORK, NY

CANOPY ADDITION

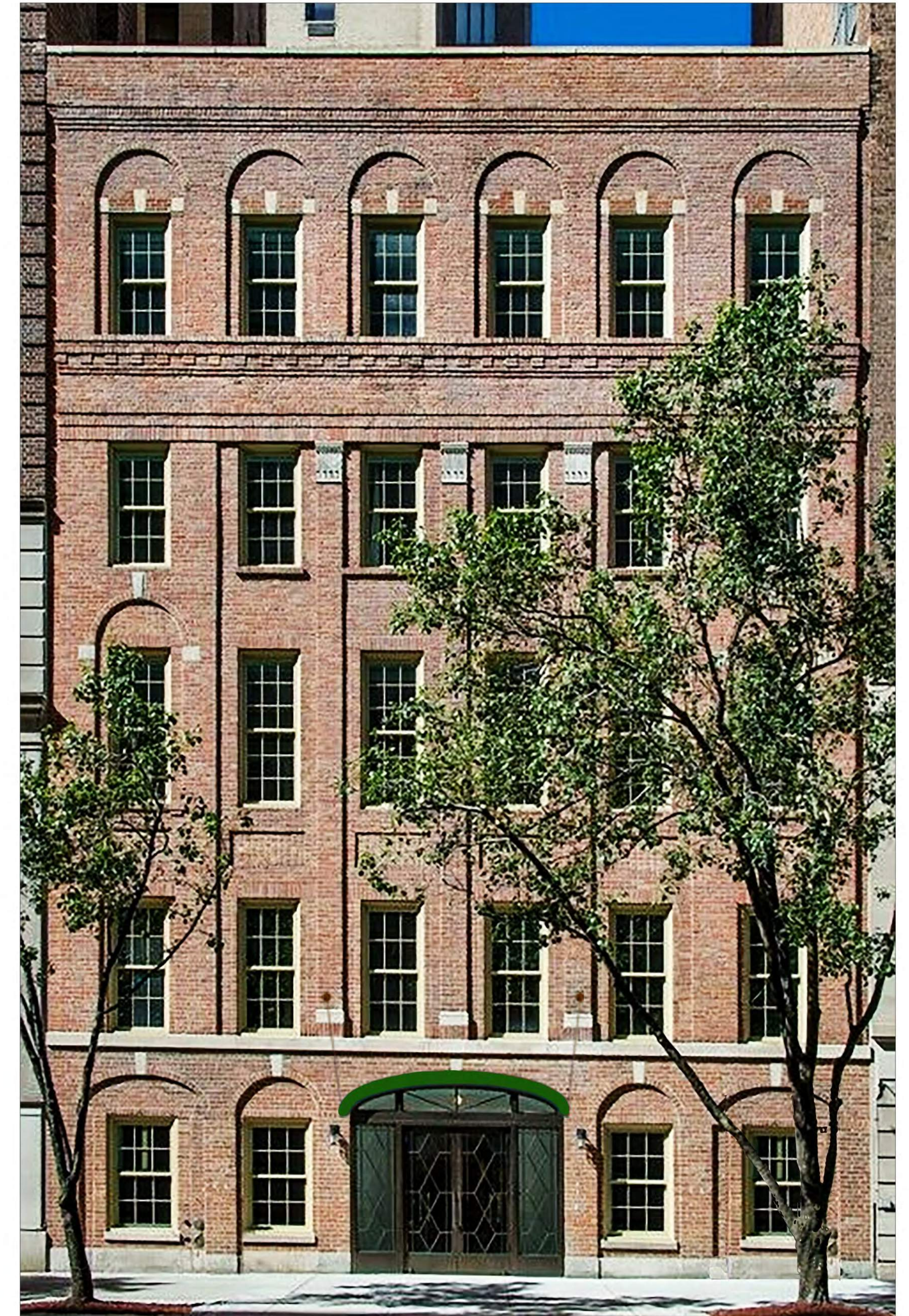
LPC DESIGNATED HISTORIC DISTRICT - UPPER EAST SIDE HISTORIC DISTRICT
ARCHITECT OF RECORD - BARRY RICE, RICE ARCHITECTS
ORIGINAL ARCHITECT - ROBERT B. LYND
ALTERATIONS ARCHITECT - SCHWARTZ AND GROSS
BUILT 1881
RENOVATED AROUND 1928 (NEW FACADE)
LPC DESIGNATED STYLE - PART OF UES HISTORIC DISTRICT
PRESENT ARCHITECTURAL STYLE - NEO CLASSICAL

ISSUED FOR LPC PERMIT

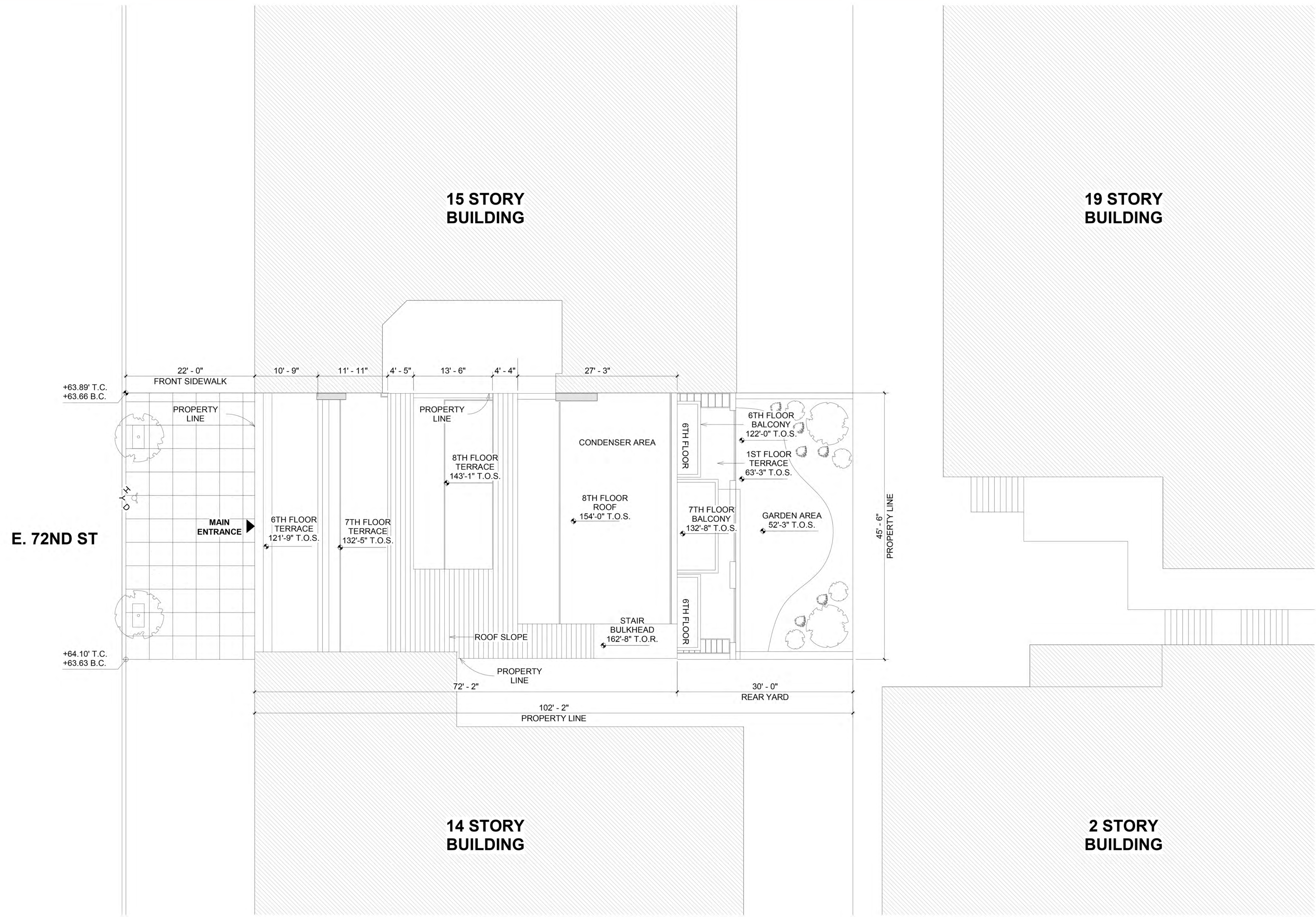
JANUARY 25th , 2023

TABLE OF CONTENTS:

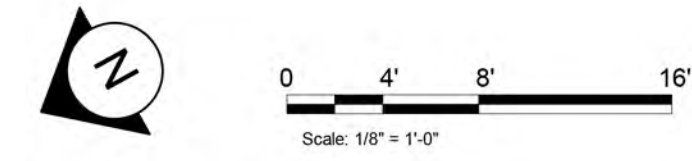
- LM-01 SITE PLAN
- LM-02 EXISTING & PROPOSED ENTRANCE PLANS AND ELEVATIONS
- LM-03 PROPOSED ENTRANCE CANOPY SECTION DETAILS, AND ELEVATION
- LM-04 BEFORE & AFTER GROUND FLOOR ENTRANCE



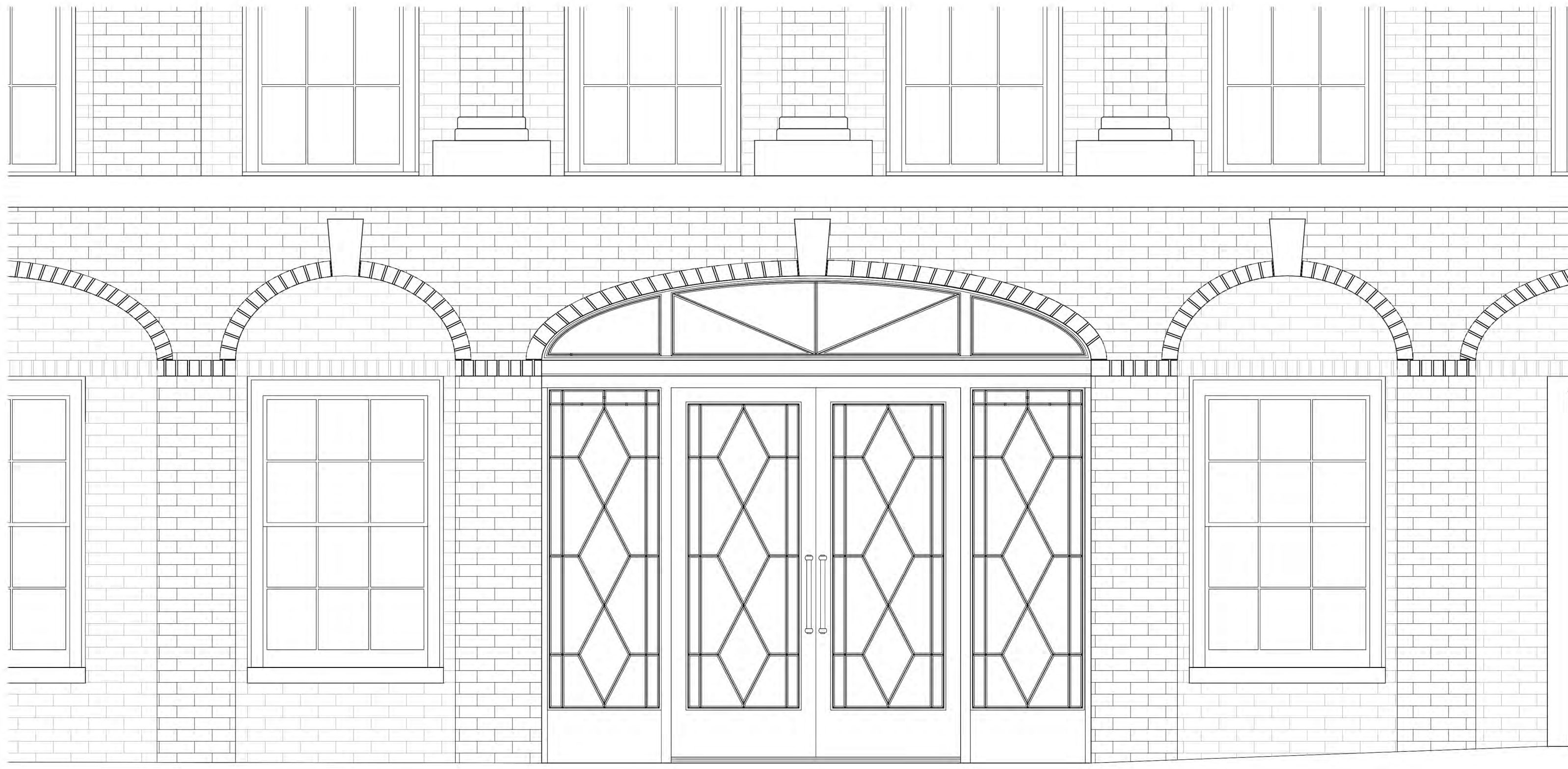
NORTH FACADE WITH
CANOPY ADDITION



1 SITE PLAN
1/8" = 1'-0"



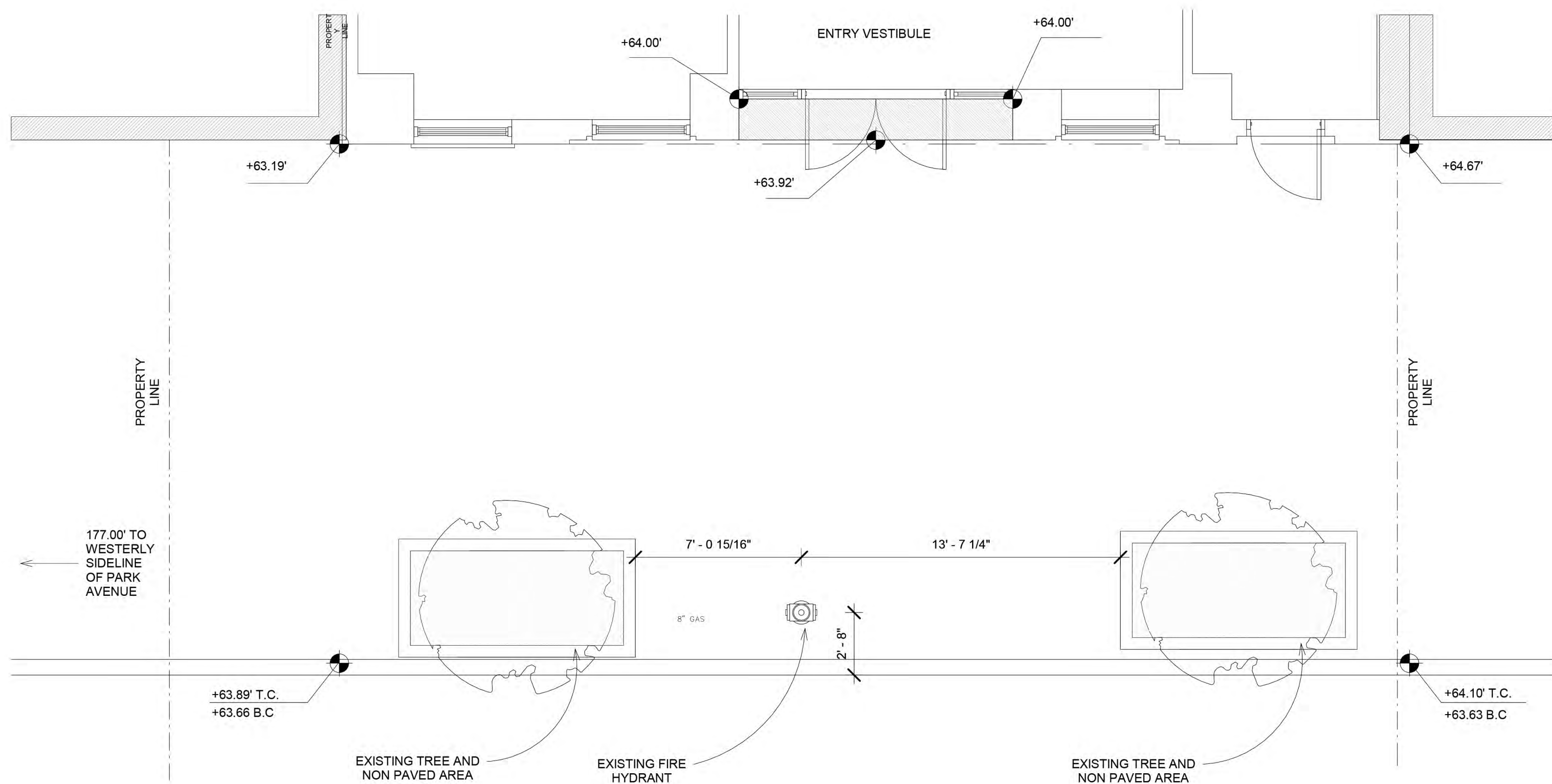
SITE PLAN



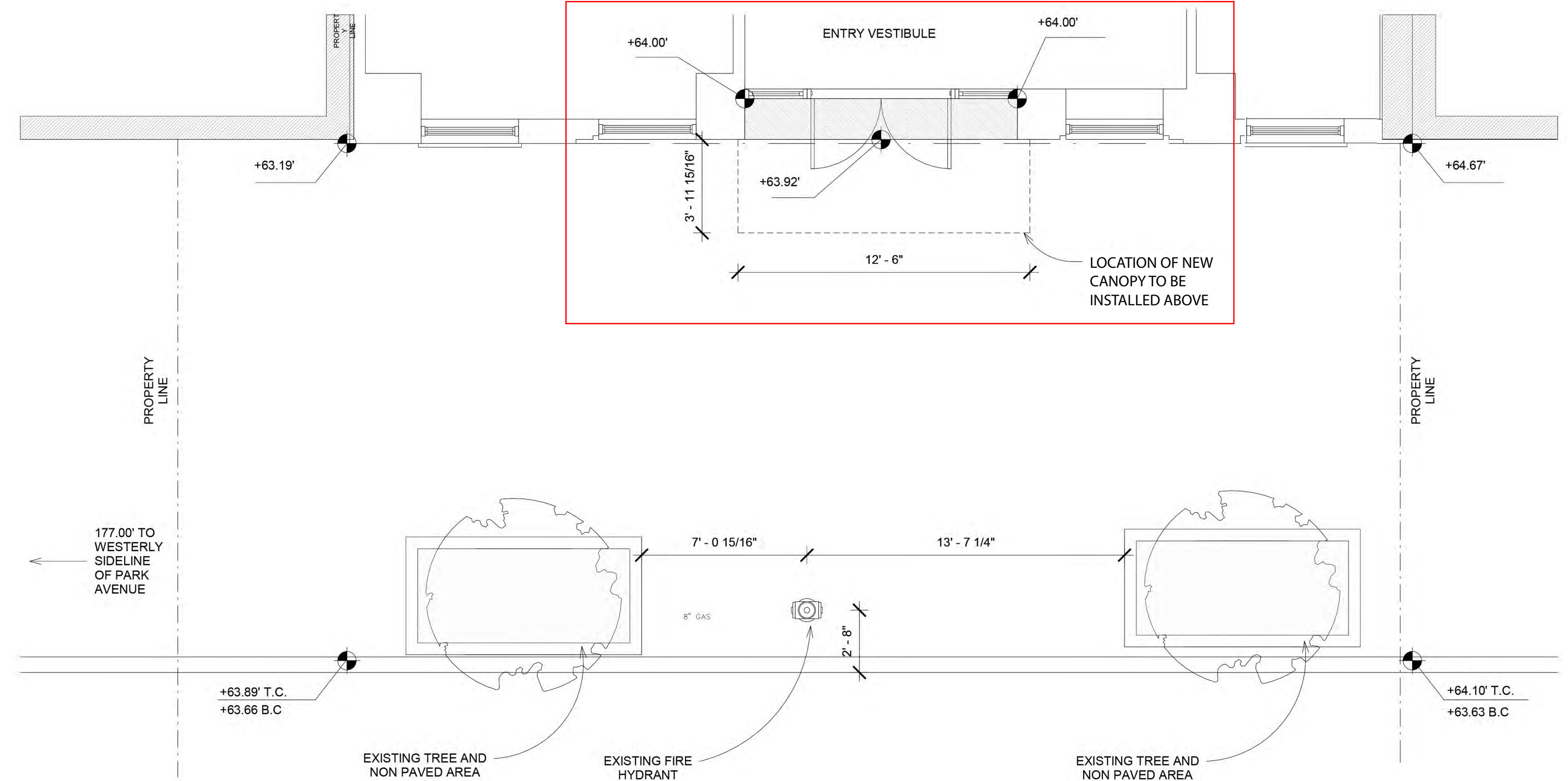
2 NORTH ELEVATION - EXISTING
1/2" = 1'-0"



5 NORTH ELEVATION - PROPOSED
1/2" = 1'-0"

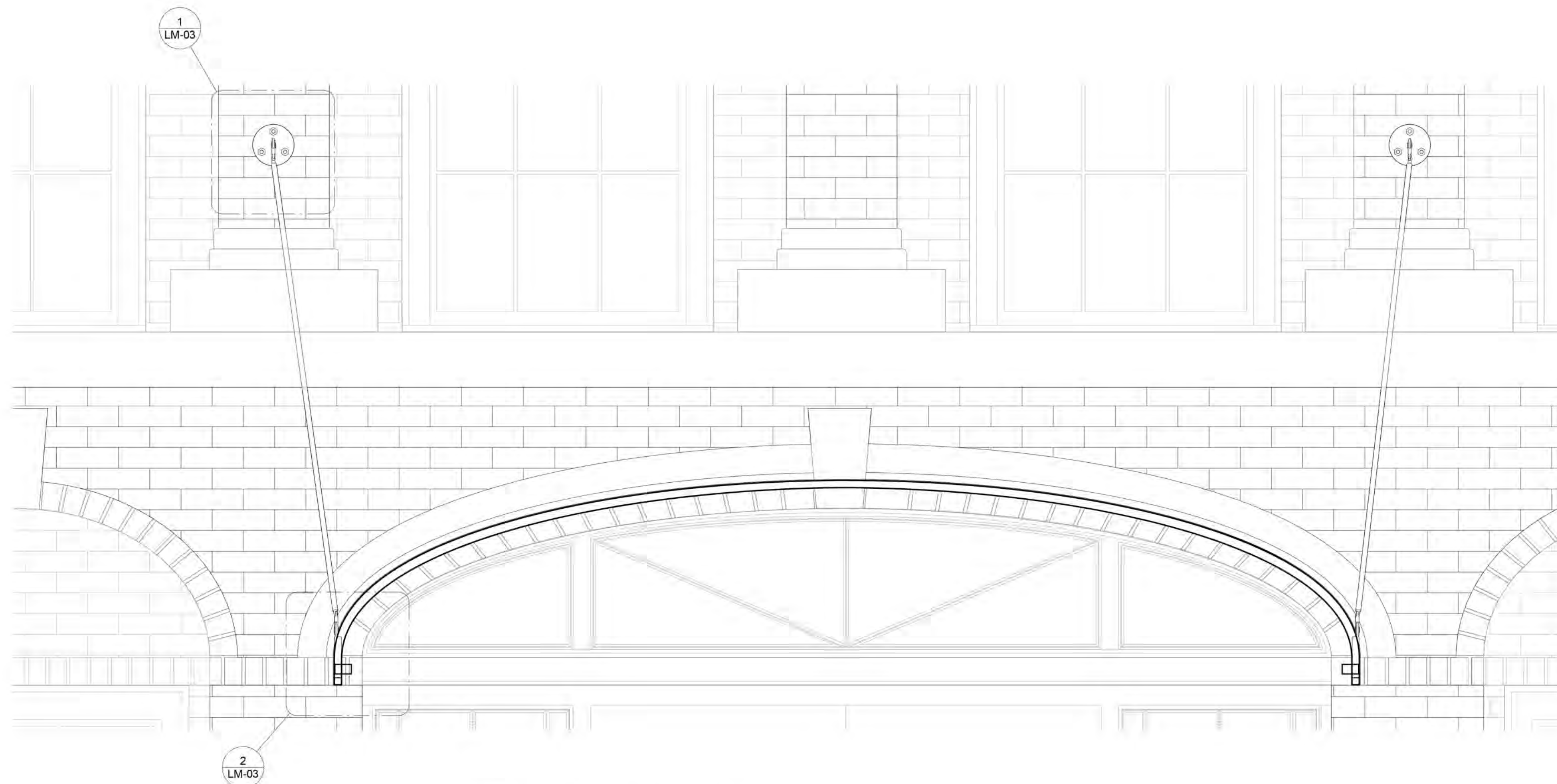


1 GROUND FLOOR PLAN - EXSITING
1/4" = 1'-0"

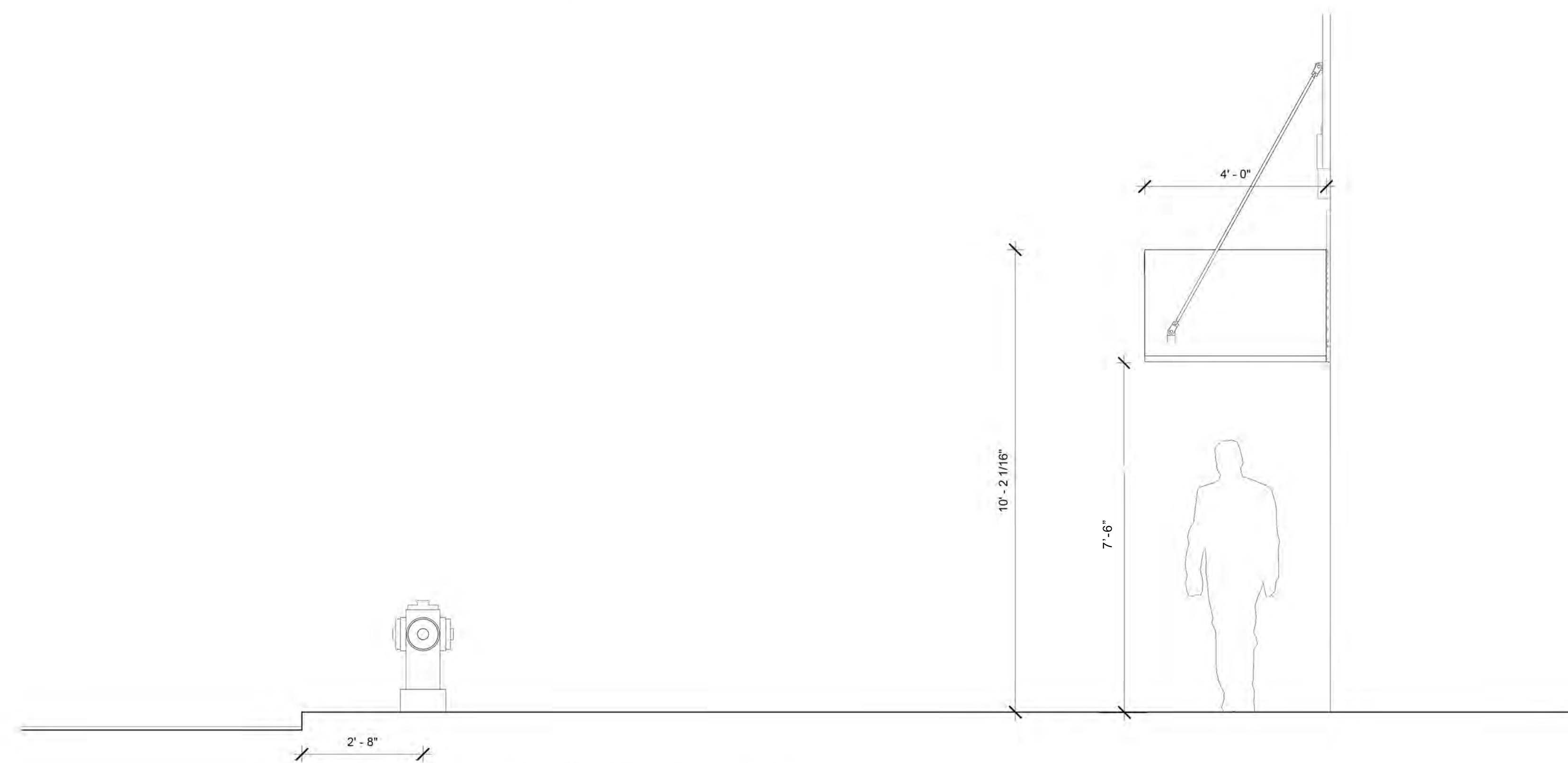


6 GROUND FLOOR PLAN - PROPOSED
1/4" = 1'-0"

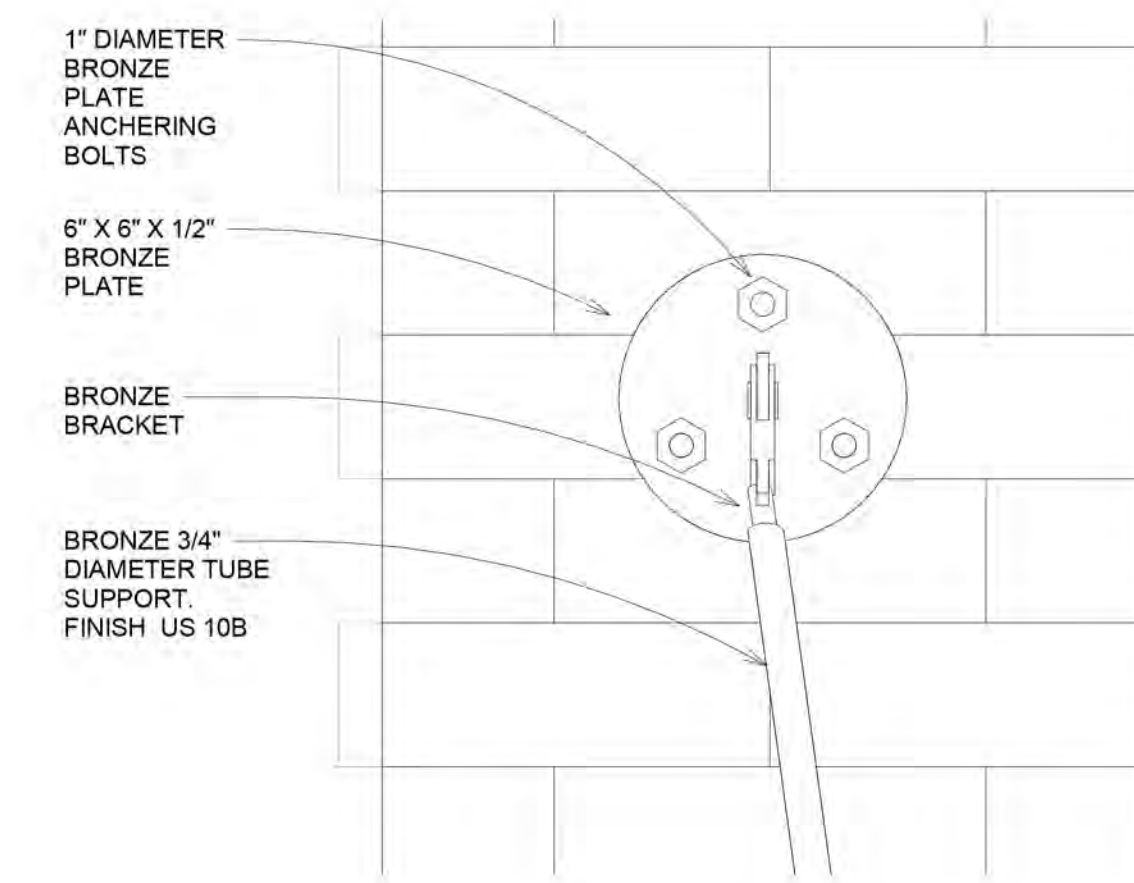
EXISTING & PROPOSED ENTRANCE
PLANS AND ELEVATIONS



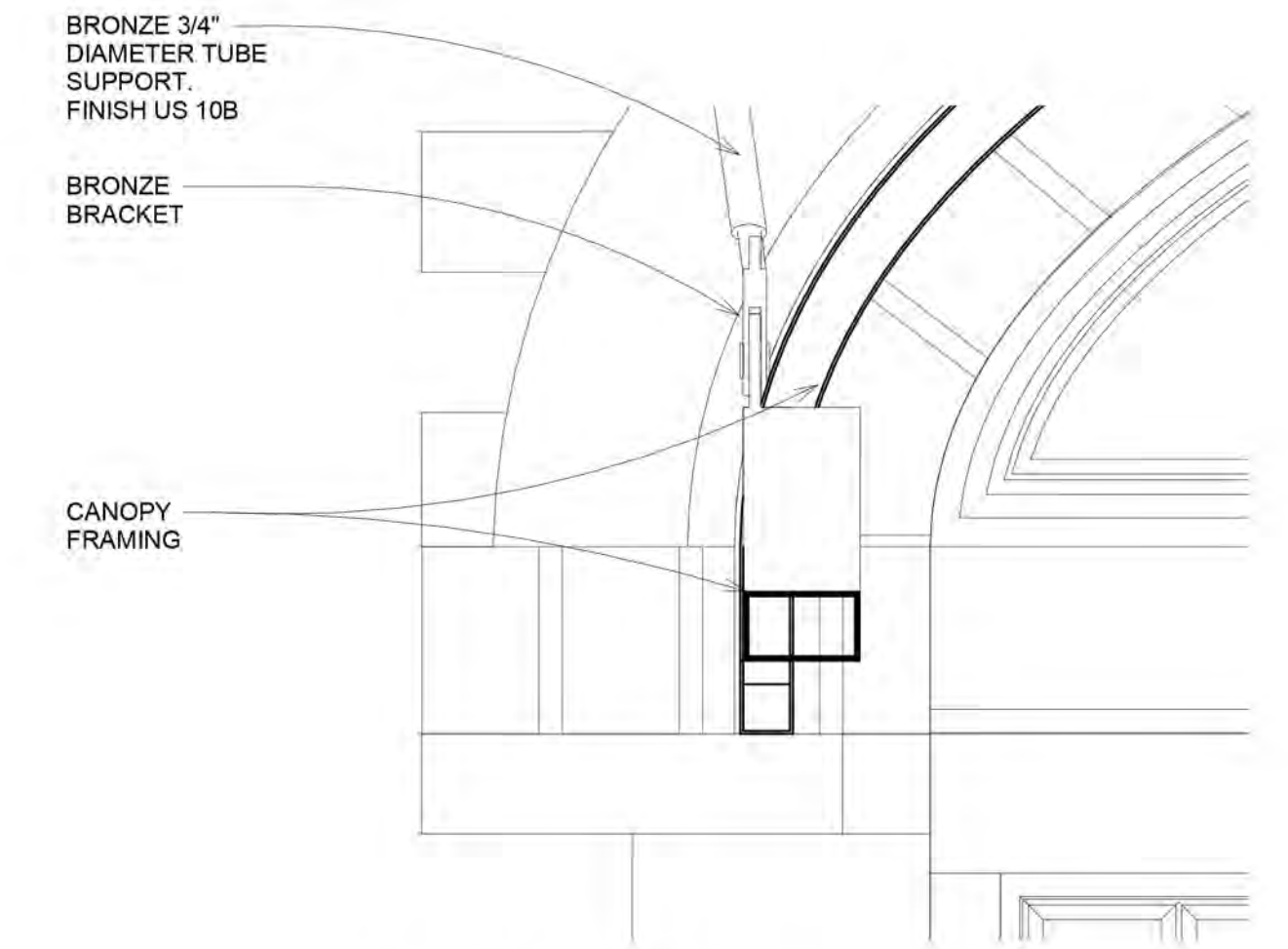
⑤ CANOPY LONGITUDINAL SECTION
1" = 1'-0"



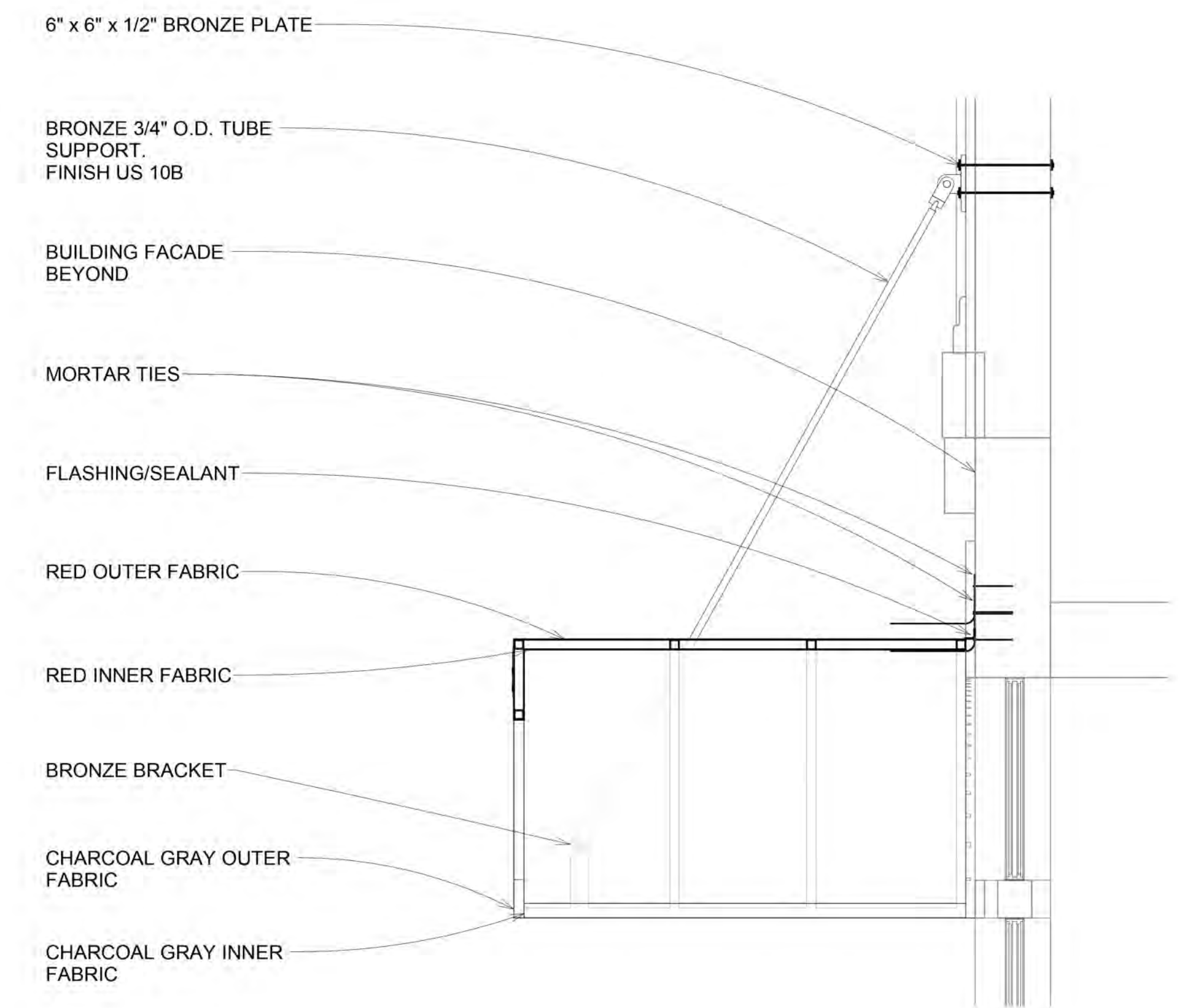
③ PROPOSED WEST ELEVATION
1/2" = 1'-0"



① CANOPY SUPPORT DETAILS
3" = 1'-0"



② CANOPY SUPPORT SECTION
3" = 1'-0"

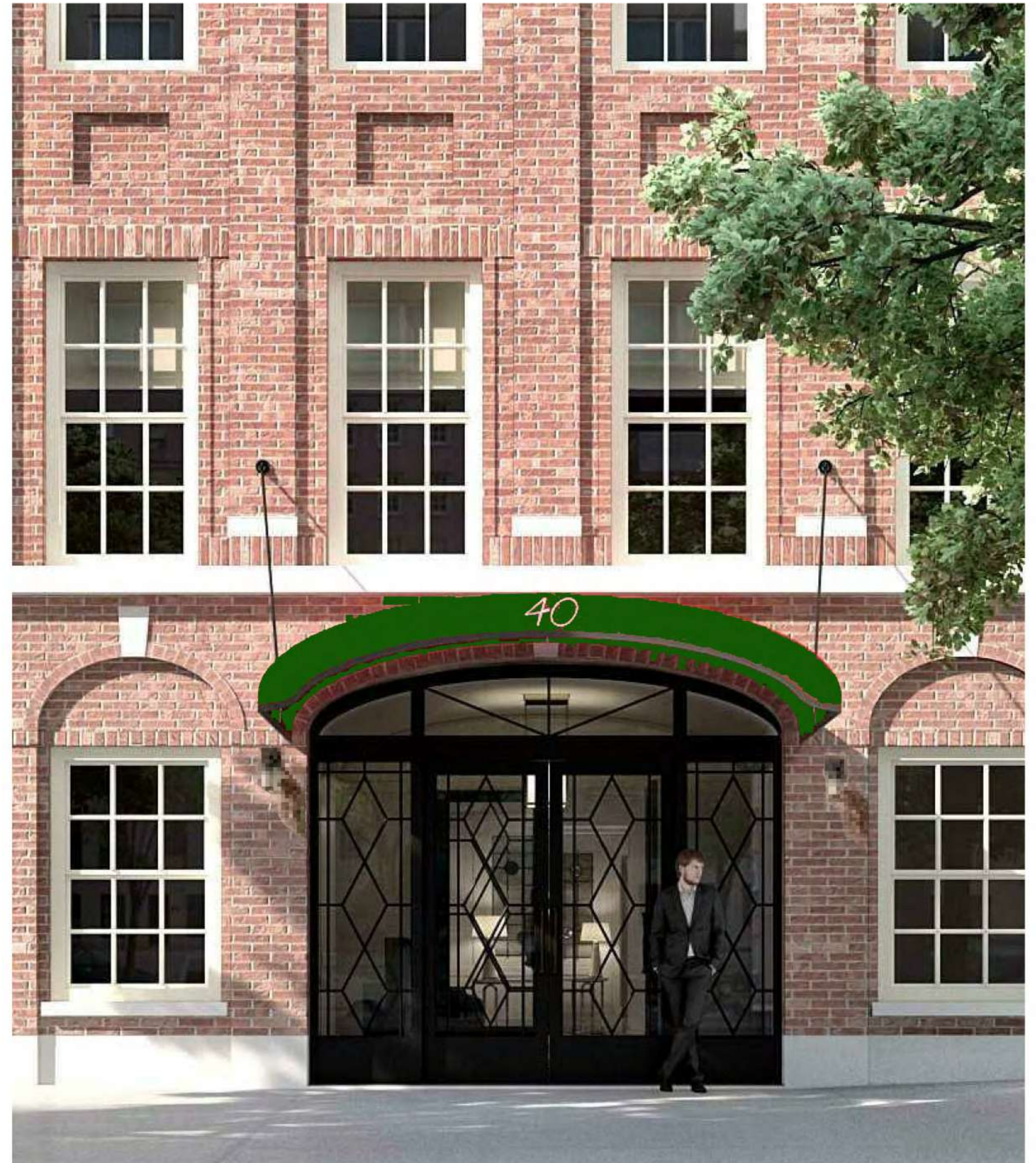


④ ENTRANCE CANOPY SECTION
1" = 1'-0"

PROPOSED ENTRANCE CANOPY SECTION DETAILS, AND ELEVATION



① BEFORE
N.T.S.



② AFTER
N.T.S.

BEFORE & AFTER GROUND
FLOOR ENTRANCE

OPTION 1 UPPER SUPPORT HARDWARE



800-561-6522



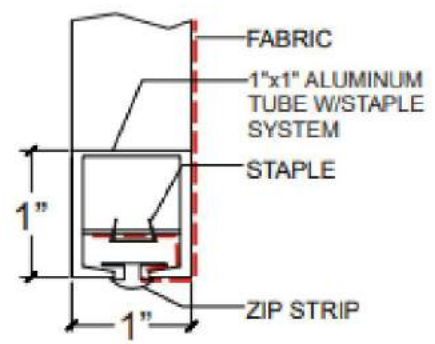
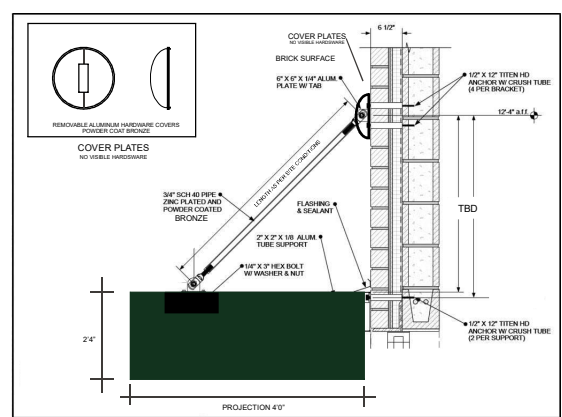
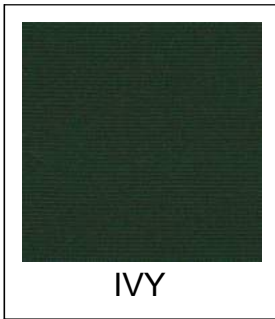
AWNING CANOPY

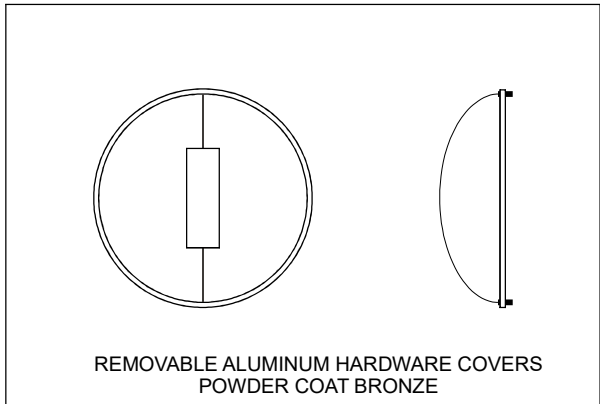
DESCRIPTION
RICE ARCHITECTS

DATE CREATED
 1-16-22

CLIENT
 40 EAST 72ND STREET
 NEW YORK, NY

JOB SITE ADDRESS





COVER PLATES
NO VISIBLE HARDWARE

COVER PLATES
NO VISIBLE HARDWARE

BRICK SURFACE

6" X 6" X 1/4" ALUM.
PLATE W/ TAB

6 1/2"

1/2" X 12" TITEN HD
ANCHOR W/ CRUSH TUBE
(4 PER BRACKET)

12'-4" a.f.f.

3/4" SCH 40 PIPE
ZINC PLATED AND
POWDER COATED
BRONZE

LENGTH AS PER SITE CONDITIONS

FLASHING
& SEALANT

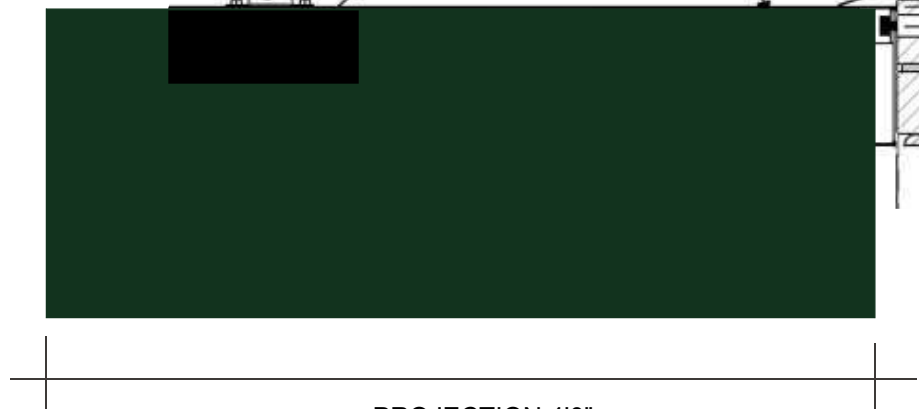
TBD

2" X 2" X 1/8" ALUM.
TUBE SUPPORT

1/4" X 3" HEX BOLT
W/ WASHER & NUT

1/2" X 12" TITEN HD
ANCHOR W/ CRUSH TUBE
(2 PER SUPPORT)

2'4"



PROJECTION 4'0"