

# East Midtown Greenway and Andrew Haswell Green Park 2B 53<sup>rd</sup> – 62<sup>nd</sup> Street

Presentation to CB8 Parks & Waterfront Committee and 197-A Committee

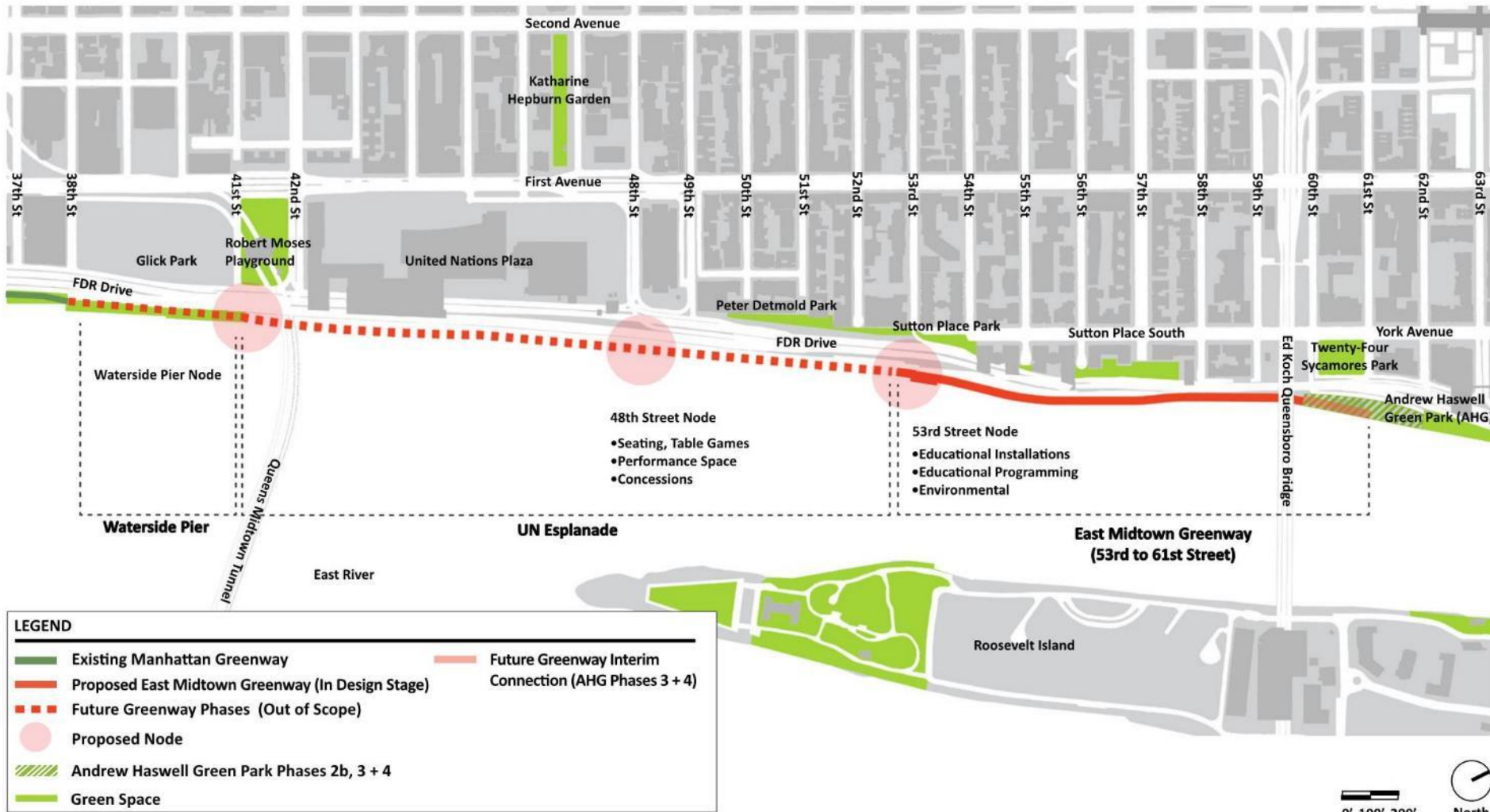
Oct 13<sup>th</sup>, 2022

**NYC / EDC**



NYC Parks

# East Midtown Waterfront Esplanade



**LEGEND**

- Existing Manhattan Greenway
- Proposed East Midtown Greenway (In Design Stage)
- - - Future Greenway Phases (Out of Scope)
- Proposed Node
- ▨ Andrew Haswell Green Park Phases 2b, 3 + 4
- Green Space
- Future Greenway Interim Connection (AHG Phases 3 + 4)

# EMG and Andrew Haswell Green Park 2B



# EMG and Andrew Haswell Green Park 2B

Sutton Place Park

Birch Point

The South Dune/Pollinator Meadow

The Bluff

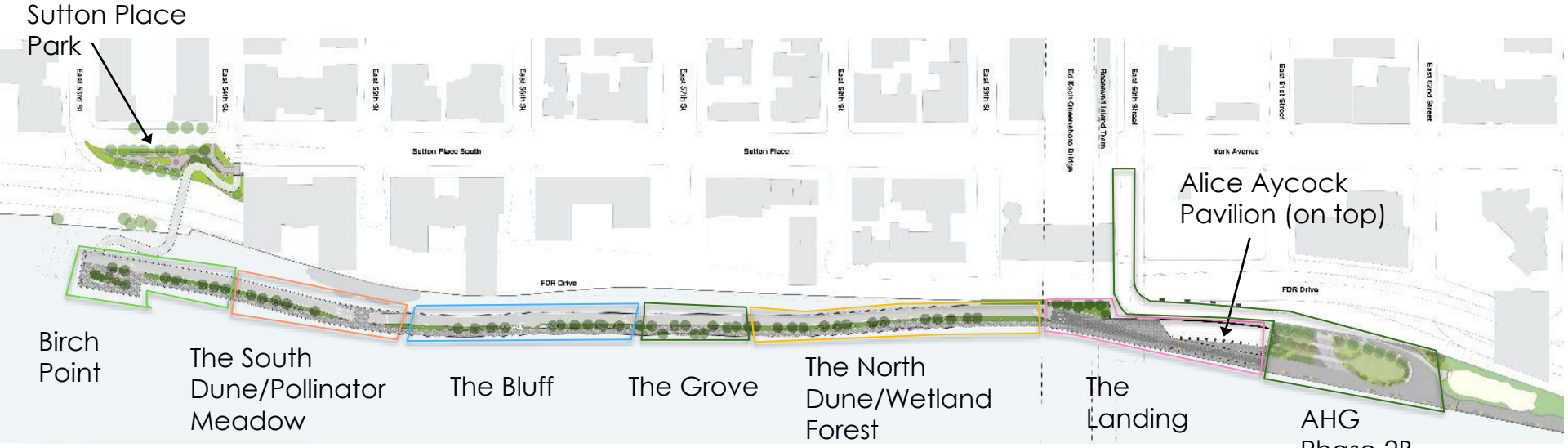
The Grove

The North Dune/Wetland Forest

The Landing

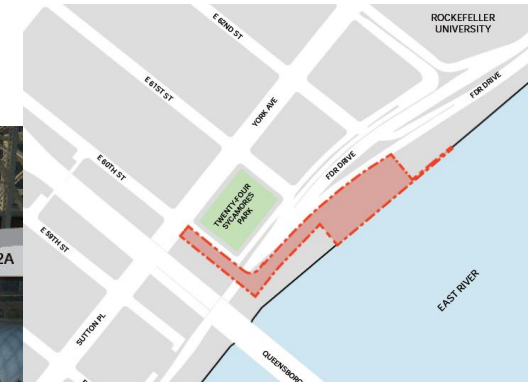
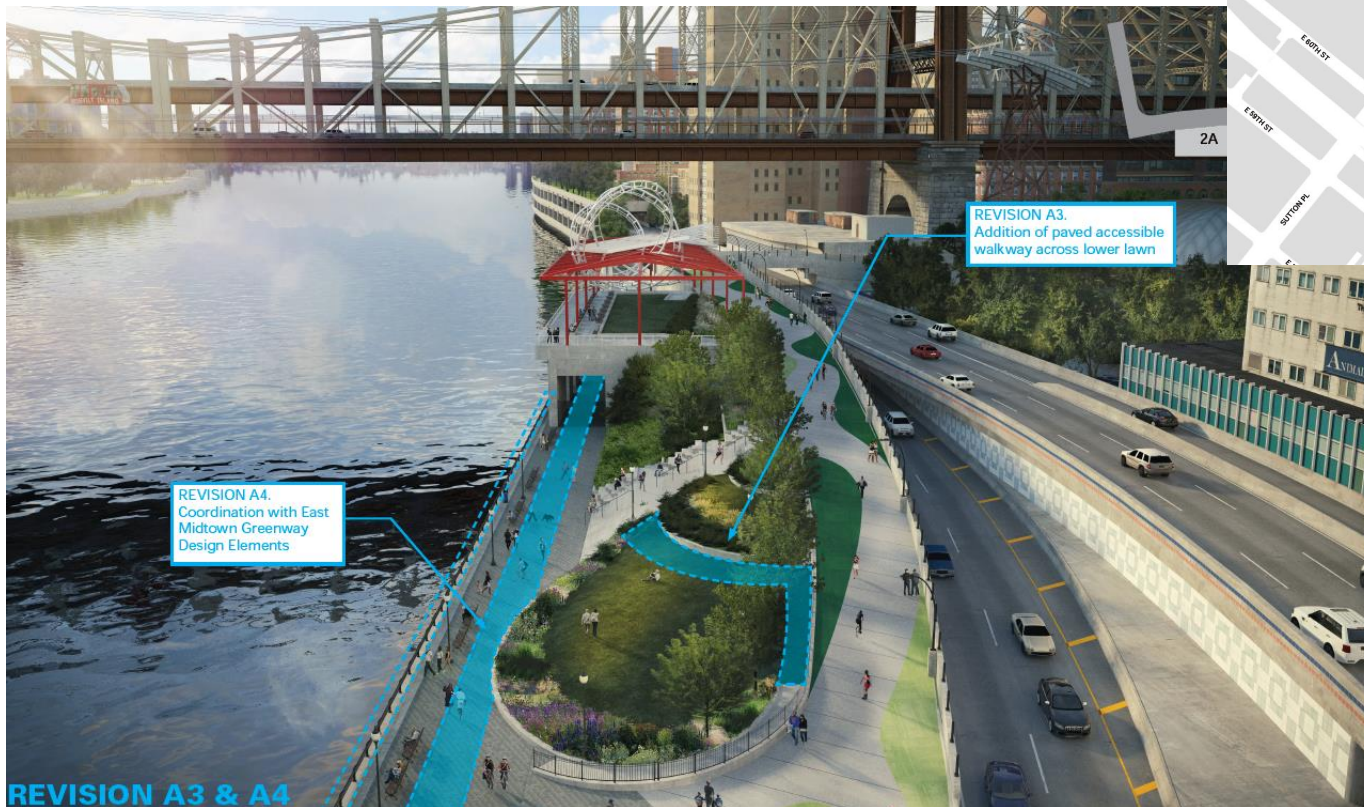
AHG Phase 2B

Alice Aycock Pavilion (on top)





# Andrew Haswell Green Park 2B



Approximately 1 acre new passive recreation park:

- Reconstruction of the existing platform
- Rehabilitation of the East 60<sup>th</sup> Street overpass
- Landscaping, railing, lighting, pavement and seating

# Rendering of AHG2B looking South





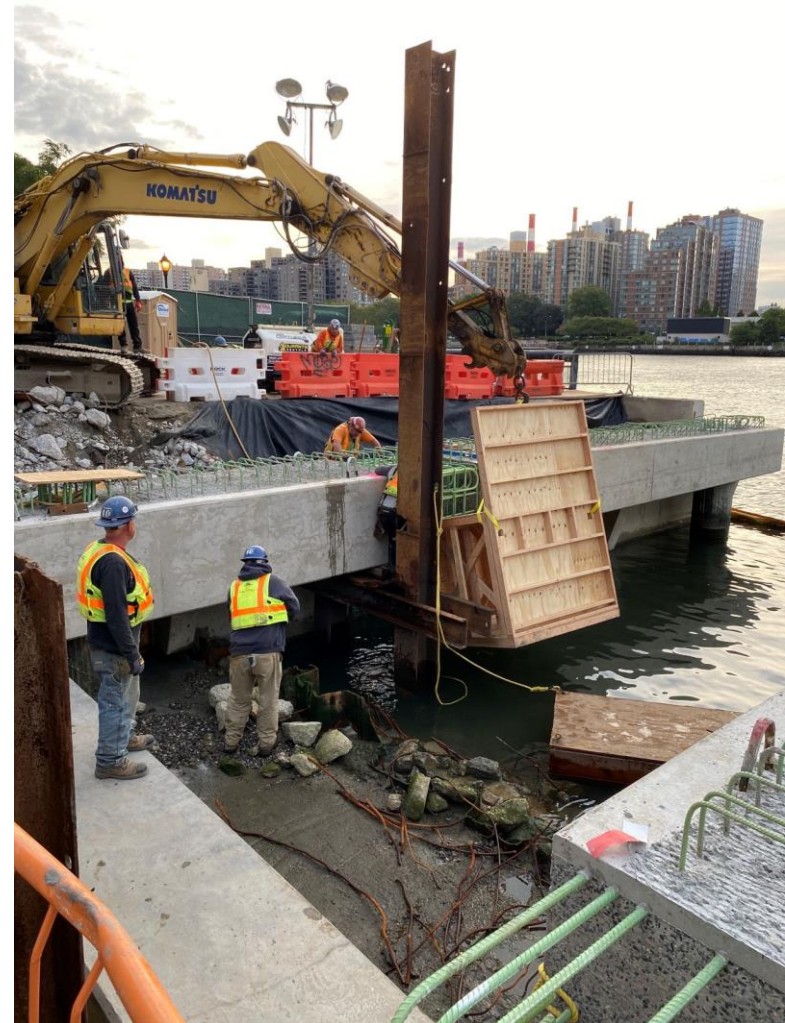
# AHG Signage Unveiling – 10/07/2022



# Construction Progress: AHG2B

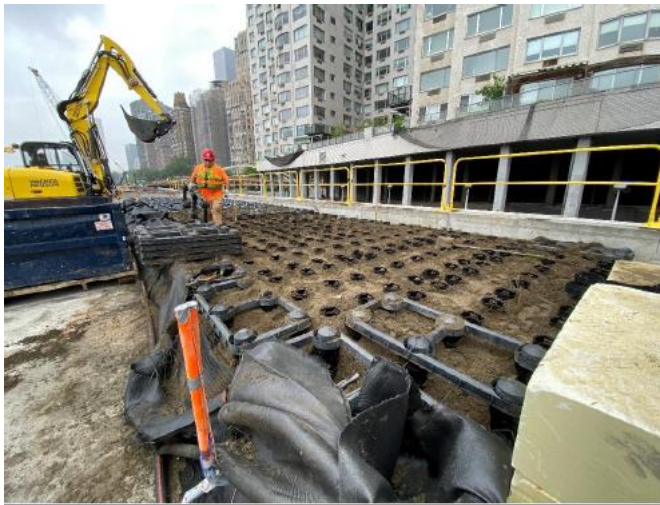


Install Deck Planks





# Construction Progress: East Midtown Greenway



Soil in Silva Cells



Bike Path Concrete Pour



Install West Side Railings



Strip Ramp Edge Forms

# Construction Progress: Heliport Structure



East Curtain Wall Demo



Demo of South Curtain Wall



# Rendering of Transition Area



# Schedule



- EMG Area 1, 2 and 3: topside construction underway – Planting in Fall 2022
- 54th Pedestrian Bridge: Fence and Railing Fabrication
- 60th Street Ramp: critical repairs complete
- AHG2B: Platform construction ongoing
- AHG2B Civil Work: Fall 2022 – Fall 2023
- Greenway and AHG 2B completion: Dec 2023



# Questions / Comments



# Appendix

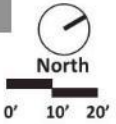
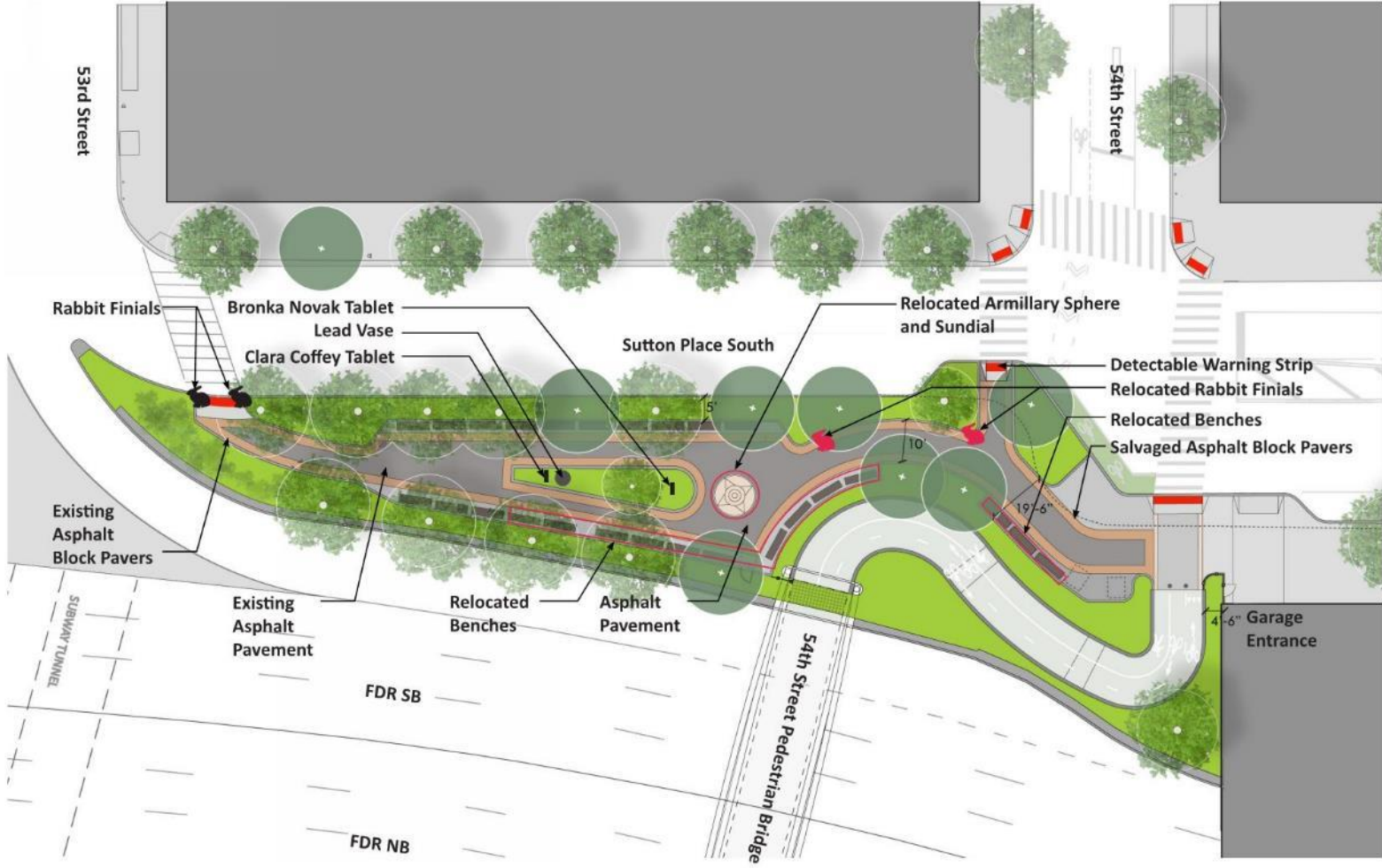
**NYC / EDC**



NYC Parks



# Clara Coffey Park



# Clara Coffey Park





# Rendering of 54<sup>th</sup> St. Pedestrian Bridge





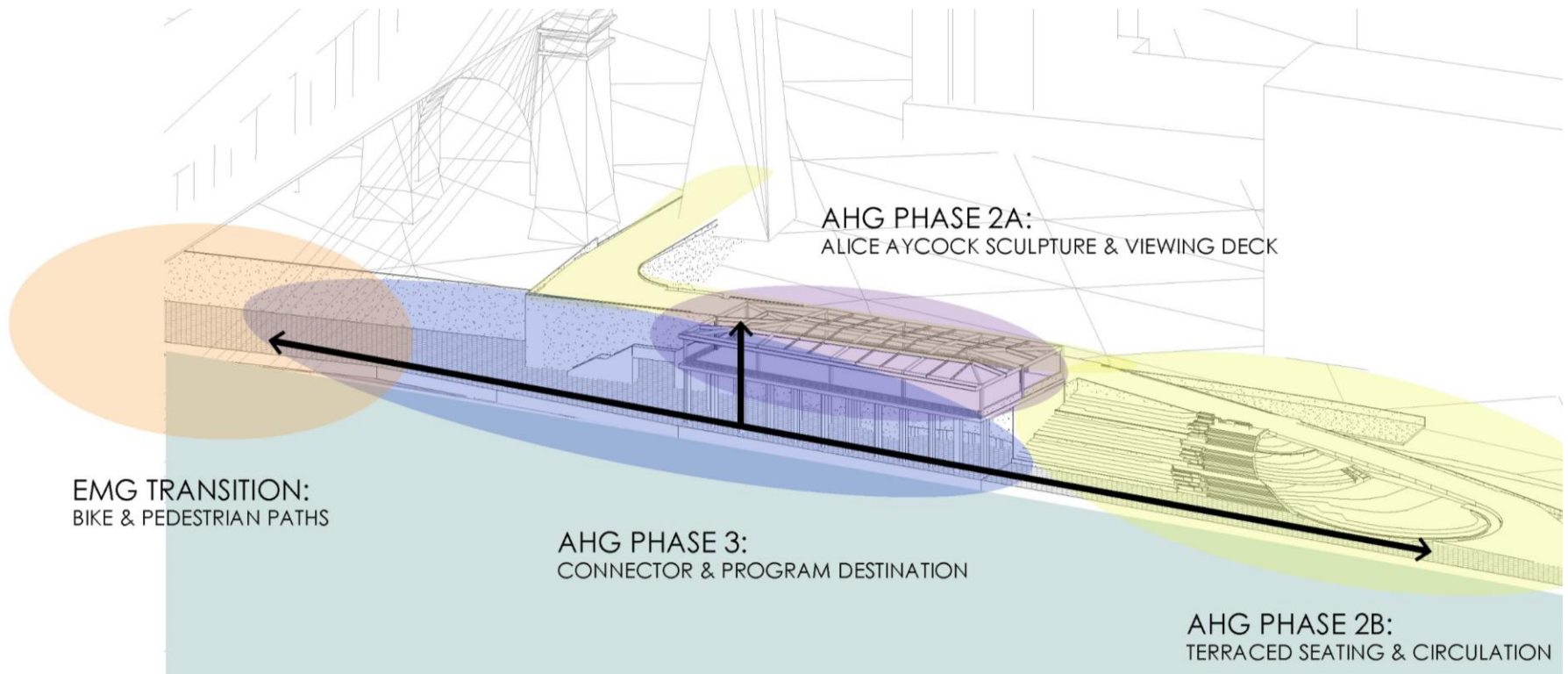
# Rendering of esplanade



# Andrew Haswell Green Park

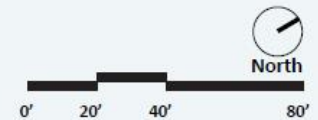
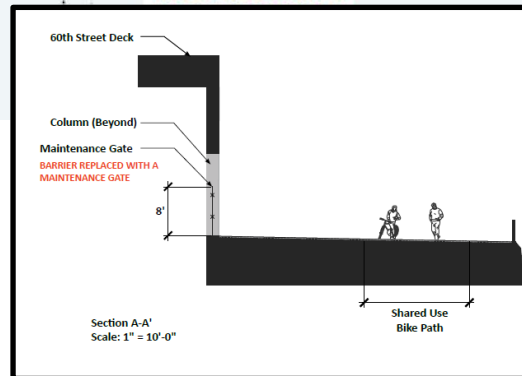
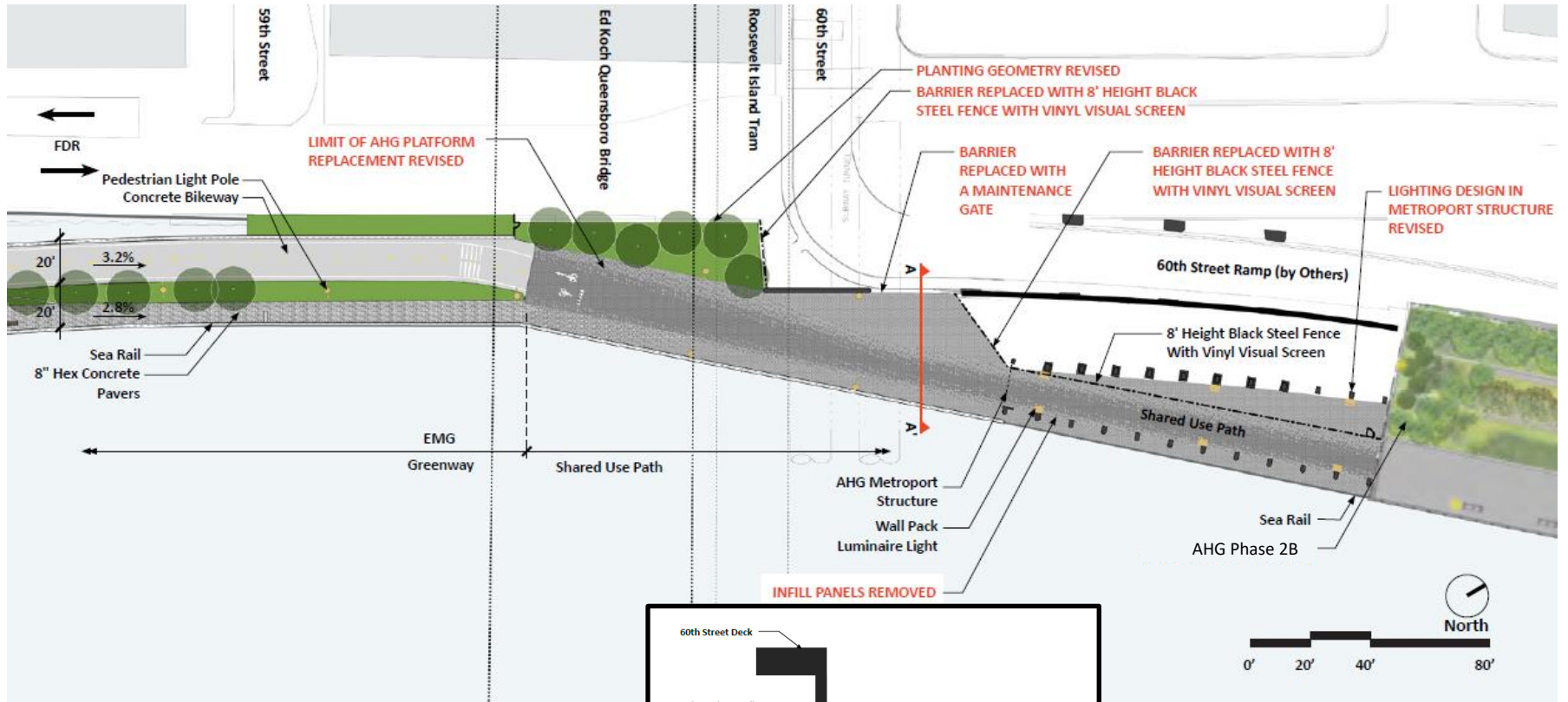
## 3 Phases:

- AHG 2A – Construction Complete
- AHG 2B – In Construction
- AHG 3 – Unfunded





# Transition Area Enlargement Plan



# Existing Photos under Alice Ayccock Pavilion

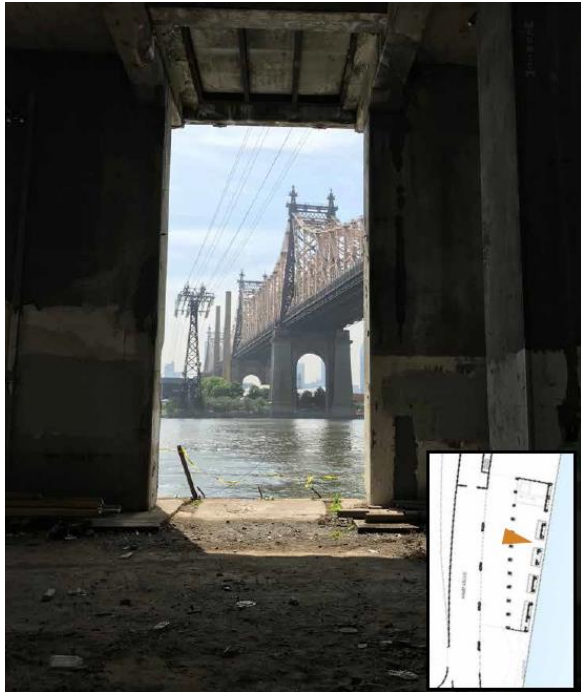


View looking North



View looking West to FDR

# Existing Photos under Alice Ayccock Pavilion



View looking East



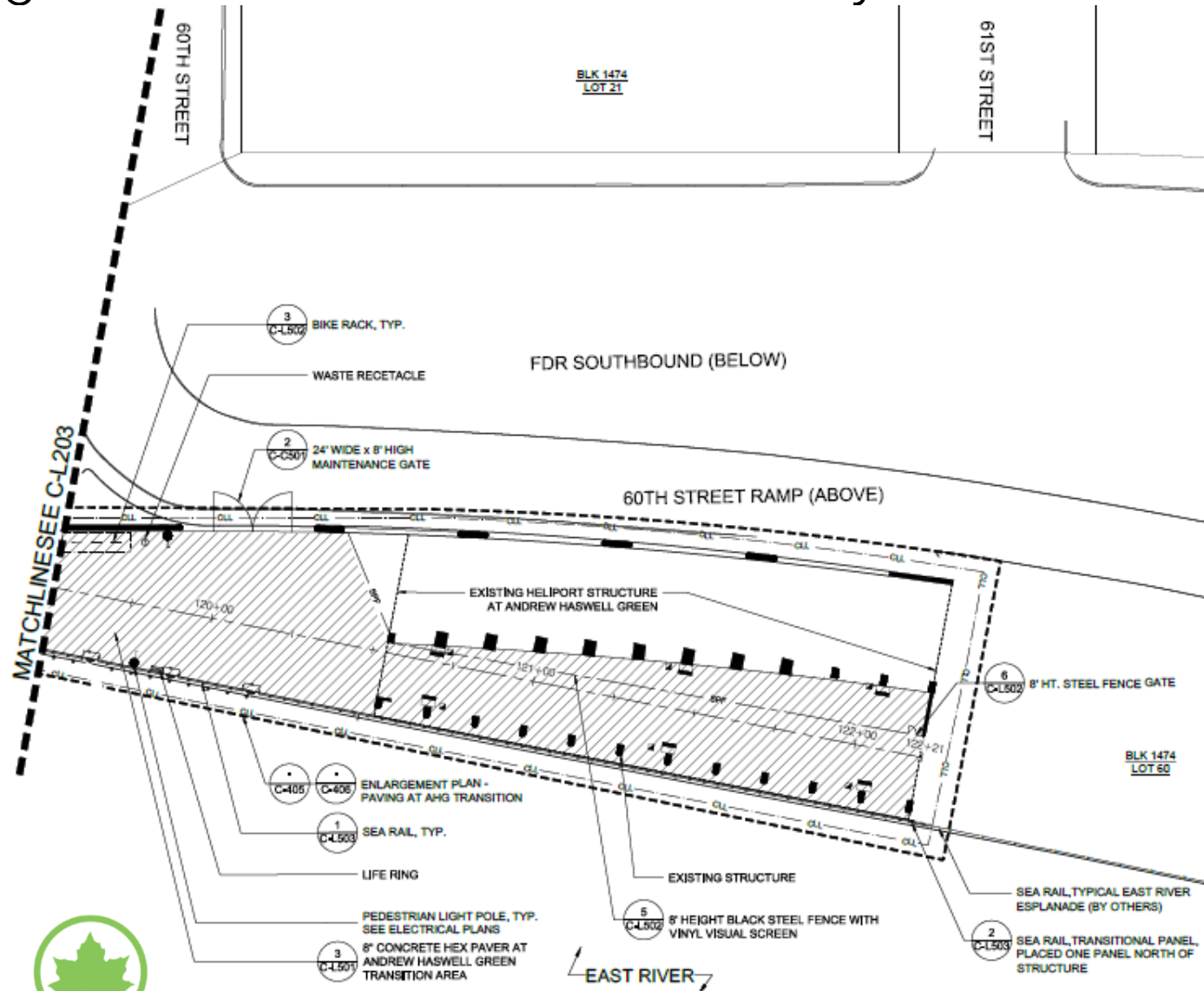
View looking East



View looking North,  
along East River



# Enlargement Plan under the Alice Ayccock Pavilion



# Alice Aycock Pavilion

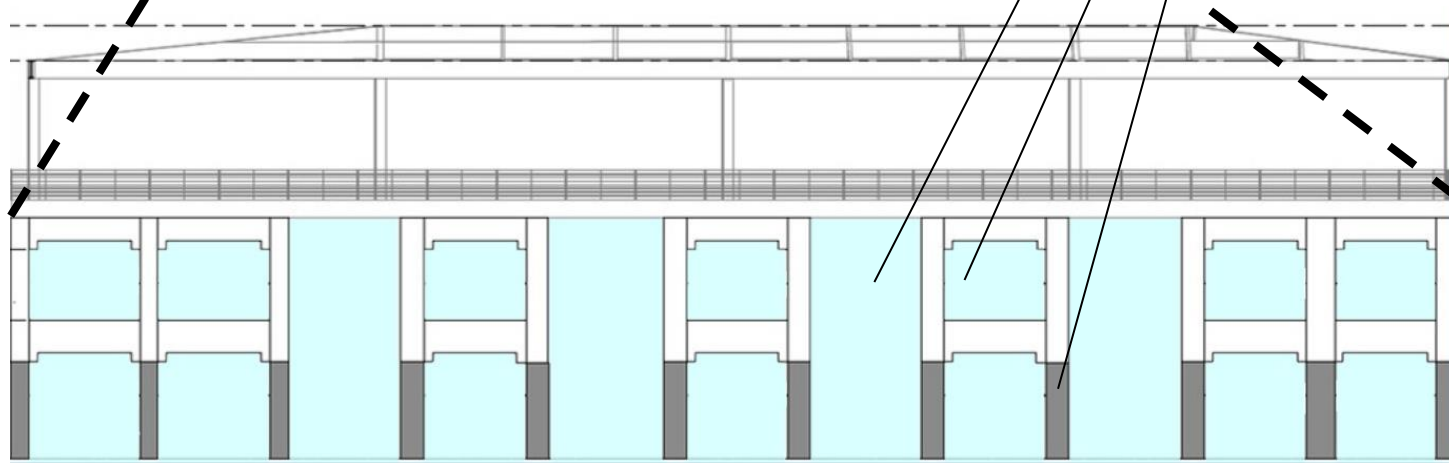


Existing Photo

Existing full-height openings

New half-height openings

New paint at lower half of structure



Proposed East Elevation



# Area under Alice Aycock Pavilion

- Over 27' tall
- New openings on North and South walls are approx. 17' & 18' wide
- New openings on East wall are 13' wide
- 8' tall black steel fencing separates esplanade from interim Parks maintenance area
- 6 new wall-mounted lights
- Shared use path is 17' wide

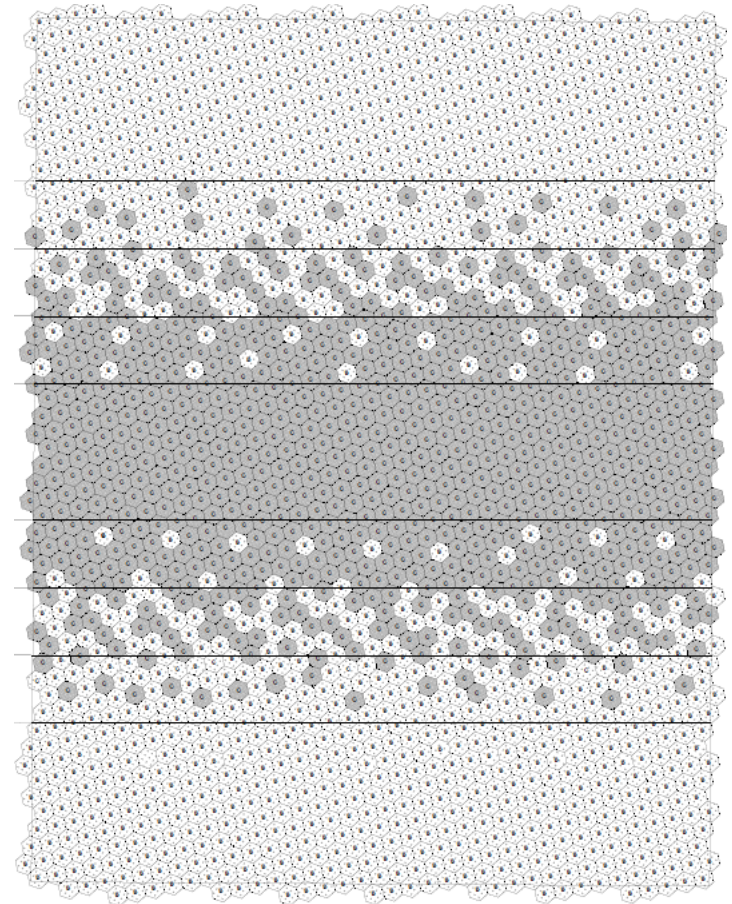


Diagram of paving at shared use path

# Transition Area: Materials and Fixtures



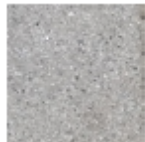
**8" Hexagon Concrete Pavers**  
Color: Medium Gray, Dark Gray



**8' Height Black Steel Fence with Vinyl Visual Screen**  
Material: Steel  
Color: Black



**Valet LED Tunnel Luminaire**  
Finish: TGIC Polyester Powder Coat Paint



**Tectura Designs, 8" Hexagon Concrete Pavers, UF-35**



**Tectura Designs, 8" Hexagon Concrete Pavers, UF-60**



**Sidewalk Gray**  
2133-60

Paint for Columns



# Typical in-water construction equipment



Barge mounted drill rig

