

201 EAST 65TH STREET - COMMERCIAL AWNING/CANOPY

201 EAST 65TH STREET

201 East 65th Street
New York, NY 10065

KUSHNER STUDIOS
55 LIBERTY STREET
2ND FLOOR
NEW YORK CITY
10005
212.965.0914
F.: 212.965.0649
E.: INFO@KUSHNERSTUDIOS.COM
W.: WWW.KUSHNERSTUDIOS.COM

KUSHNER studios

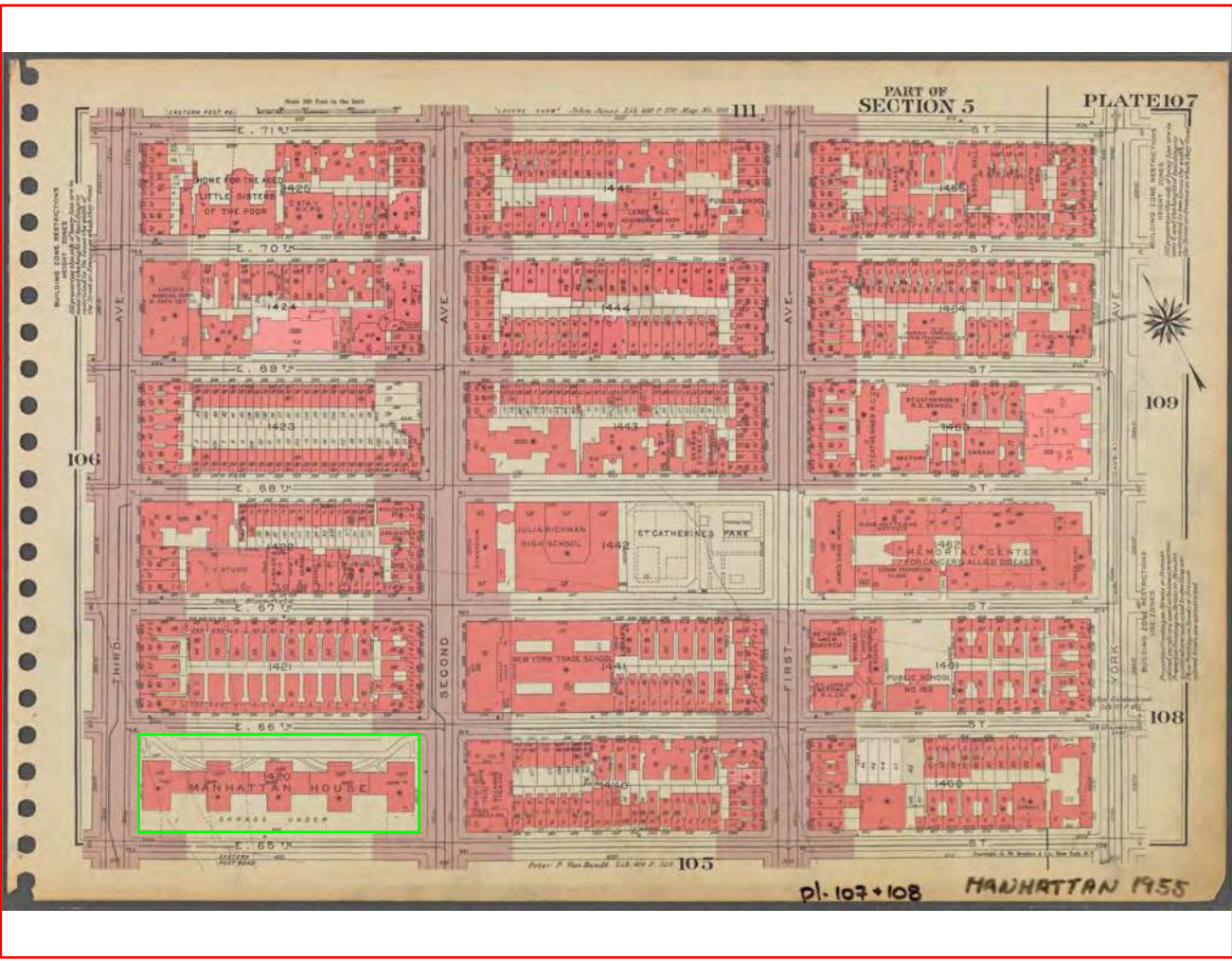
ZONING INFORMATION

LOT #:	7501
BLOCK #:	1420
MAP #:	8C
FLOOR/SUITE #/APT#:	CELLAR ONLY
ZONING DISTRICT:	R8B, C1-9 & C2-8
CONSTRUCTION CLASS:	1-A (FIRE-RESISTIVE NON-COMBUSTIBLE)
OCCUPANCY CLASSIFICATION:	B
USE GROUP:	4
GROSS S.F.:	NA
NUMBER OF STORIES:	NA
HEIGHT:	NA
COMMUNITY BD.#:	108
PLATE HEIGHT:	N/A
LANDMARKS :	YES

LOCATION MAPS



ZONING MAP 8C



SANBORN MAP



DEPARTMENT OF FINANCE TAX MAP

SCOPE OF WORK

INSTALLATION OF NEW EXTERIOR BUSINESS AWNING AT THE STREET
LEVEL TO CELLAR AS INDICATED.
THERE WILL BE NO CHANGE IN USE, OCCUPANCY OR EGRESS.

NOTE:

ADA ACCESS TO OFFICE EXISTS THROUGH RESIDENTIAL LOBBY ON 66TH STREET ENTRANCE

EXISTING BUILDING CONDITIONS



3RD AVENUE BETWEEN 65TH & 66TH STREET



EAST 65TH STREET



EAST 65TH STREET



EAST 65TH STREET



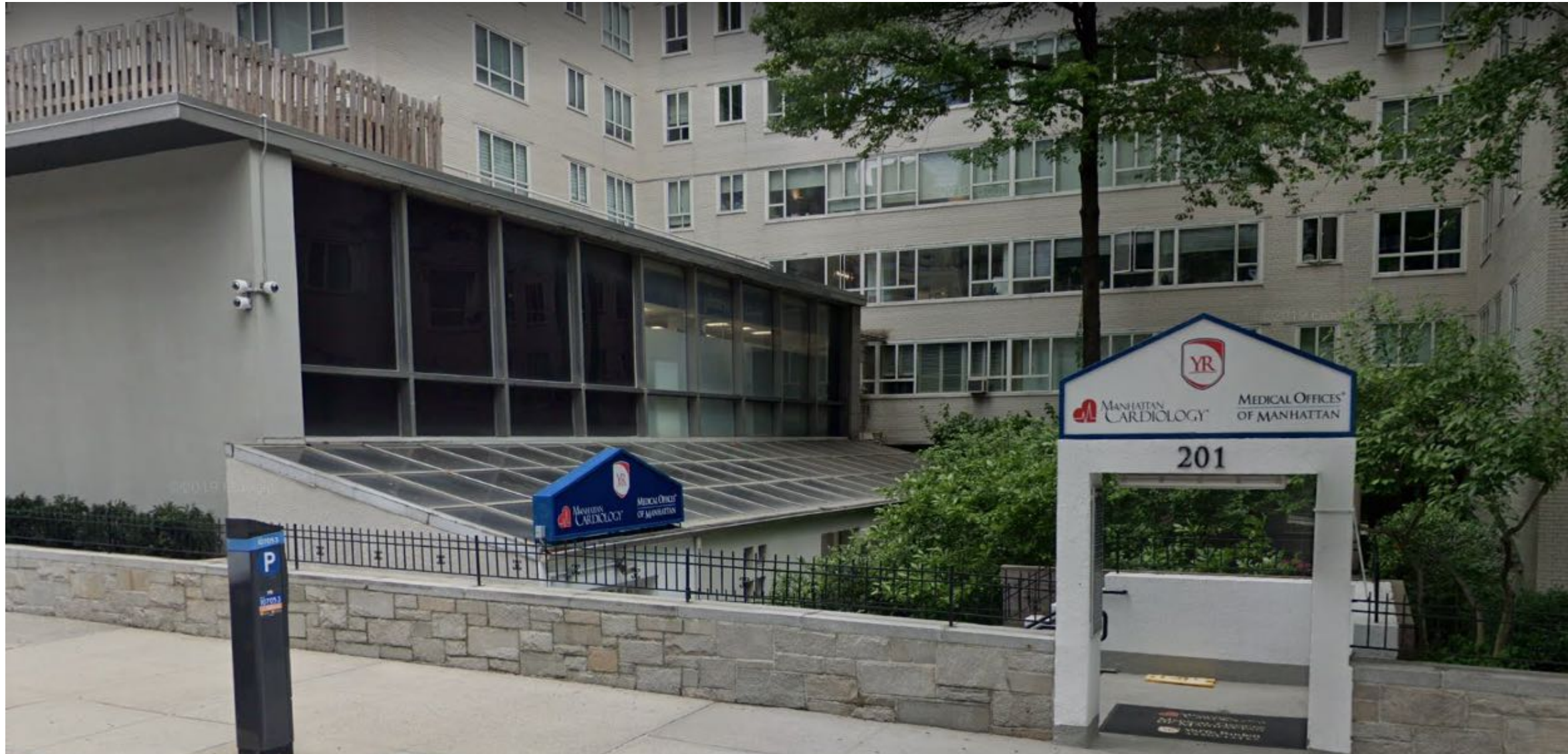
EAST 65TH STREET



COMMERCIAL AWNING/CANOPY

NOTE:
ADA ACCESS TO OFFICE EXISTS THROUGH RESIDENTIAL LOBBY ON 66TH STREET ENTRANCE

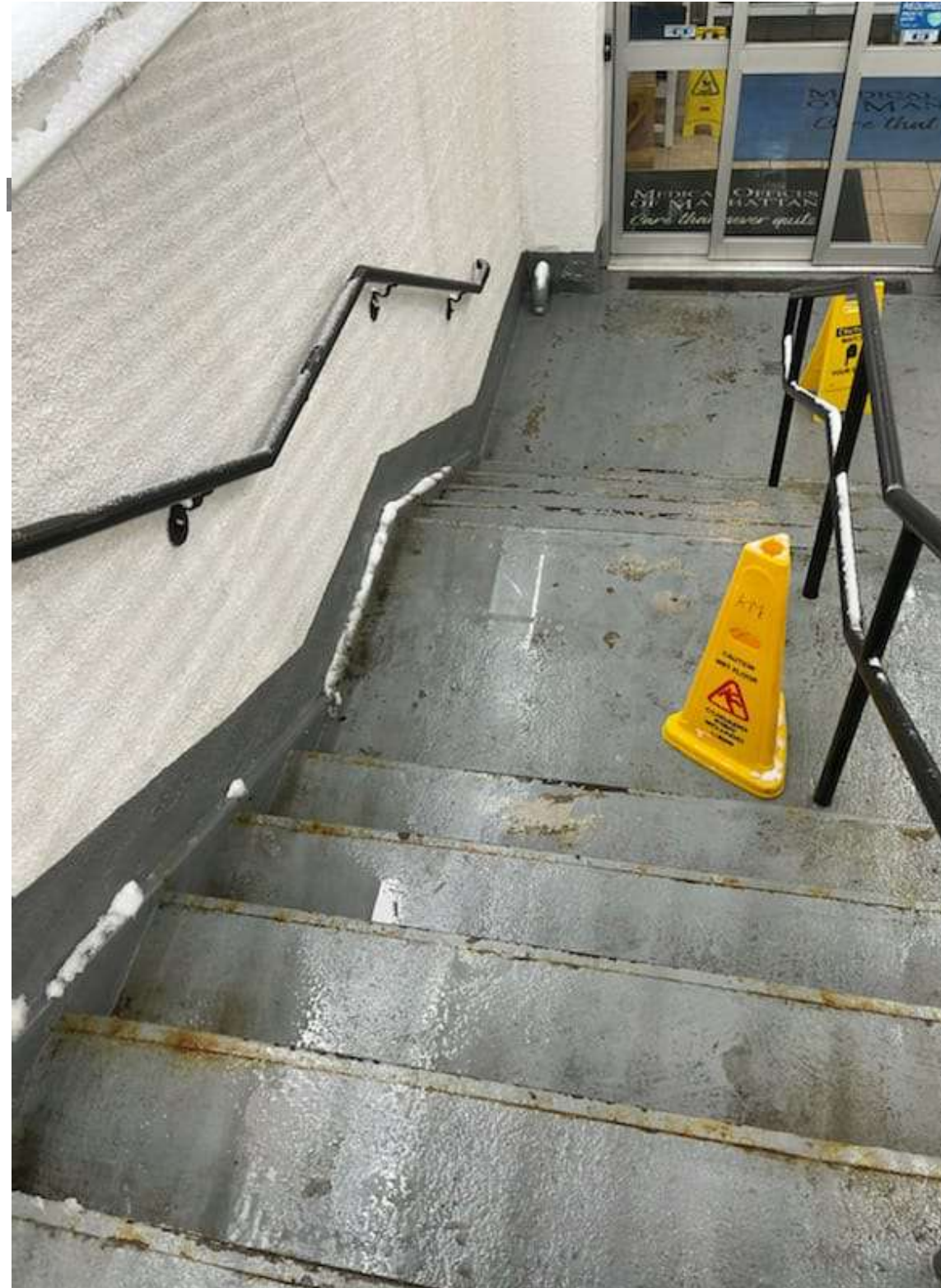
PREVIOUS CONDITIONS



MEDICAL OFFICE (APPROX. 2019)



HISTORICAL STOREFRONT



STAIRS TO MEDICAL OFFICE



MEDICAL OFFICE (APPROX. 2017)



PARTIAL PLOT PLAN

201 EAST 65TH STREET

201 East 65th Street
New York, NY 10065

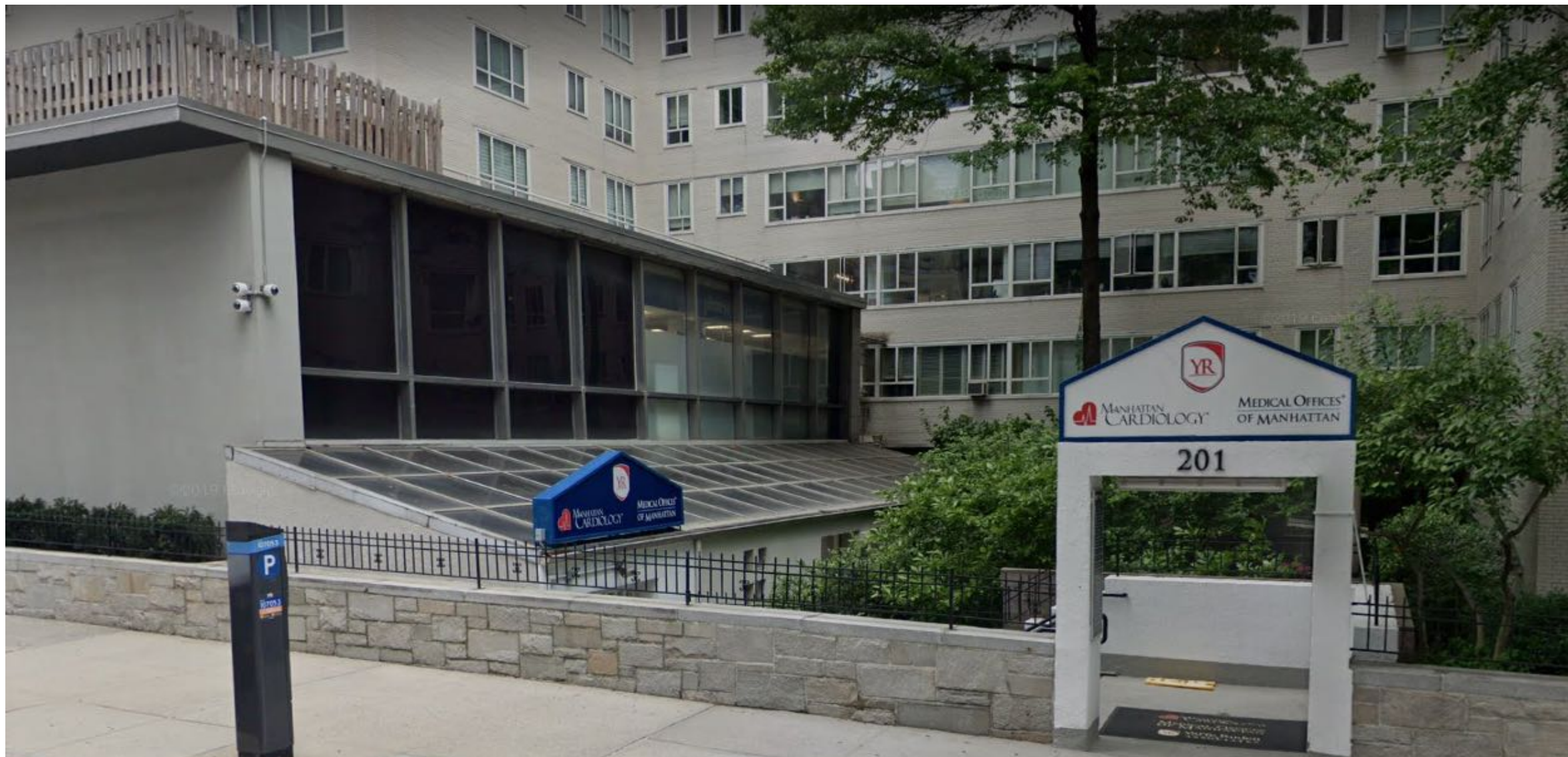
KUSHNER STUDIOS
55 LIBERTY STREET
2ND FLOOR
NEW YORK CITY
10005
212.965.0914
F.: 212.965.0649
E.: INFO@KUSHNERSTUDIOS.COM
W.: WWW.KUSHNERSTUDIOS.COM

KUSHNER studios

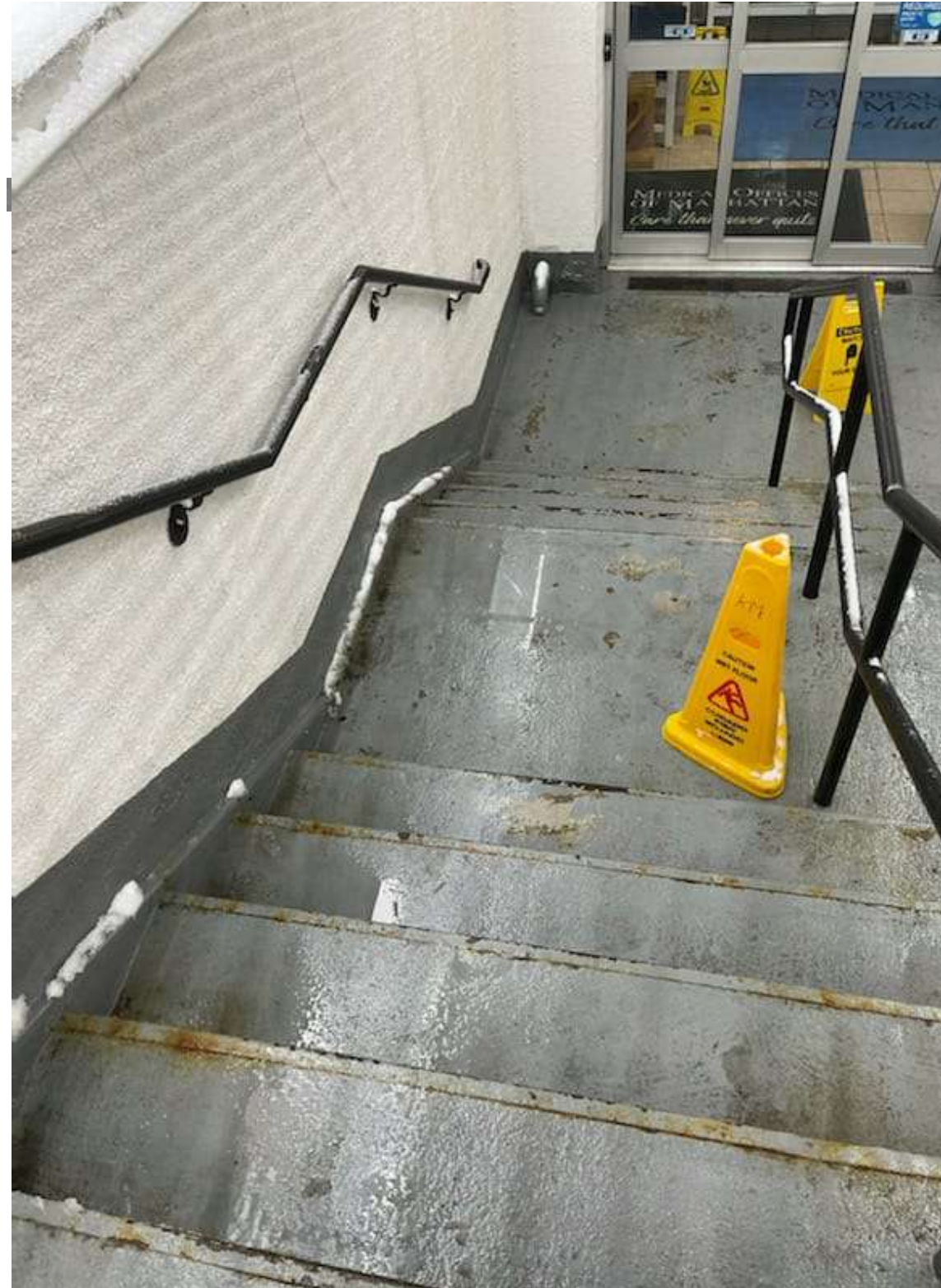
COMMERCIAL AWNING/CANOPY

NOTE:
ADA ACCESS TO OFFICE EXISTS THROUGH RESIDENTIAL LOBBY ON 66TH STREET ENTRANCE

PREVIOUS CONDITIONS



MEDICAL OFFICE (APPROX. 2019)



STAIRS TO MEDICAL OFFICE



NEW PROPOSED CONDITIONS



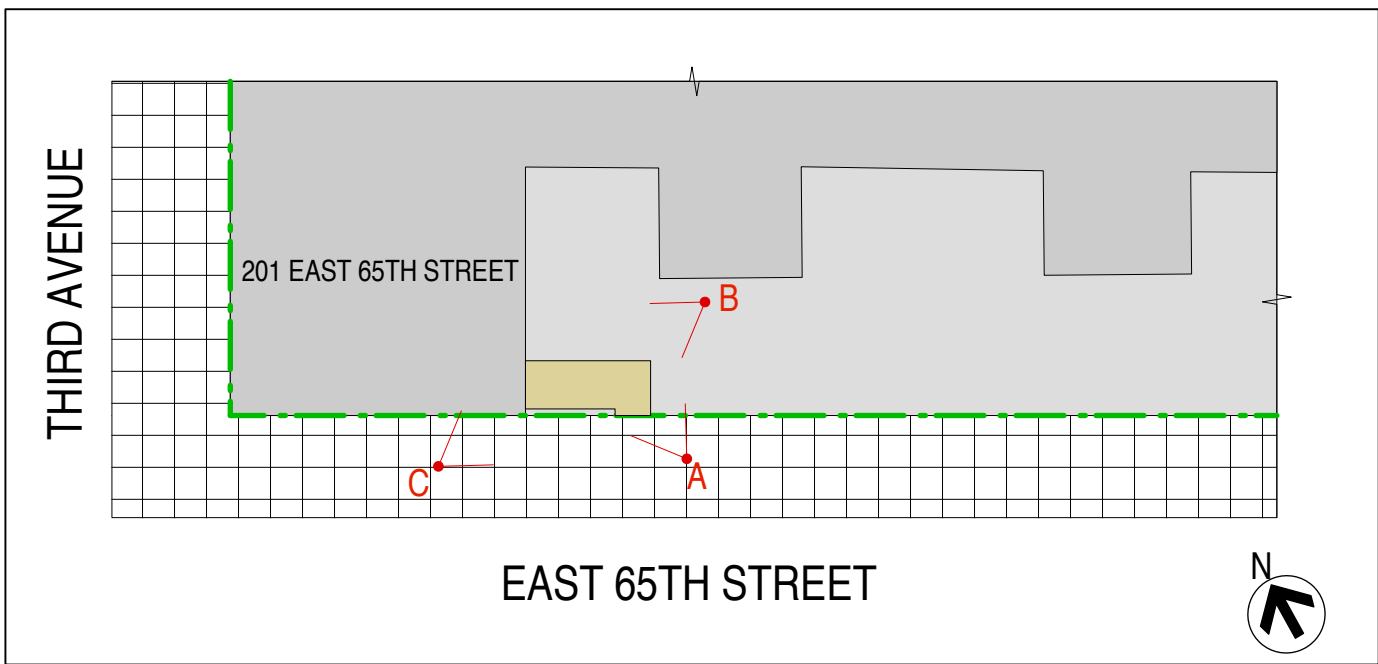
A) SOUTHEAST PERSPECTIVE



B) NORTHEAST PERSPECTIVE



C) SOUTHWEST PERSPECTIVE



PARTIAL PLOT PLAN

201 EAST 65TH STREET

201 East 65th Street
New York, NY 10065

KUSHNER STUDIOS
55 LIBERTY STREET
2ND FLOOR
NEW YORK CITY
10005
212.965.0914
F.: 212.965.0649
E.: INFO@KUSHNERSTUDIOS.COM
W.: WWW.KUSHNERSTUDIOS.COM

KUSHNER studios

MEDICAL OFFICES OF MANHATTAN	MANHATTAN CARDIOLOGY
DR. DENISE PATE	
DR. CHRISTINE KAKOULAS	
DR. GEORGE WELCH	
DR. AMI BENIAMINOVITZ	
DR. JARED BRAUNSTEIN	
DR. DANH NGO	
DR. LYNE GENESTE	
DR. HOWARD ZALFF	
DR. KAMILA SEILHAN	
DR. LINDA WANG	
DR. BRUCE YAFFE	
DR. RONALD RUDEN	
DR. ROBERT SEGAL	
LILY GROBMAN, PA	
KATE PRIMAVERA, PA	
ALISA HENKIN, PA	
KARIM WAHIB, PA	

DIRECTORY

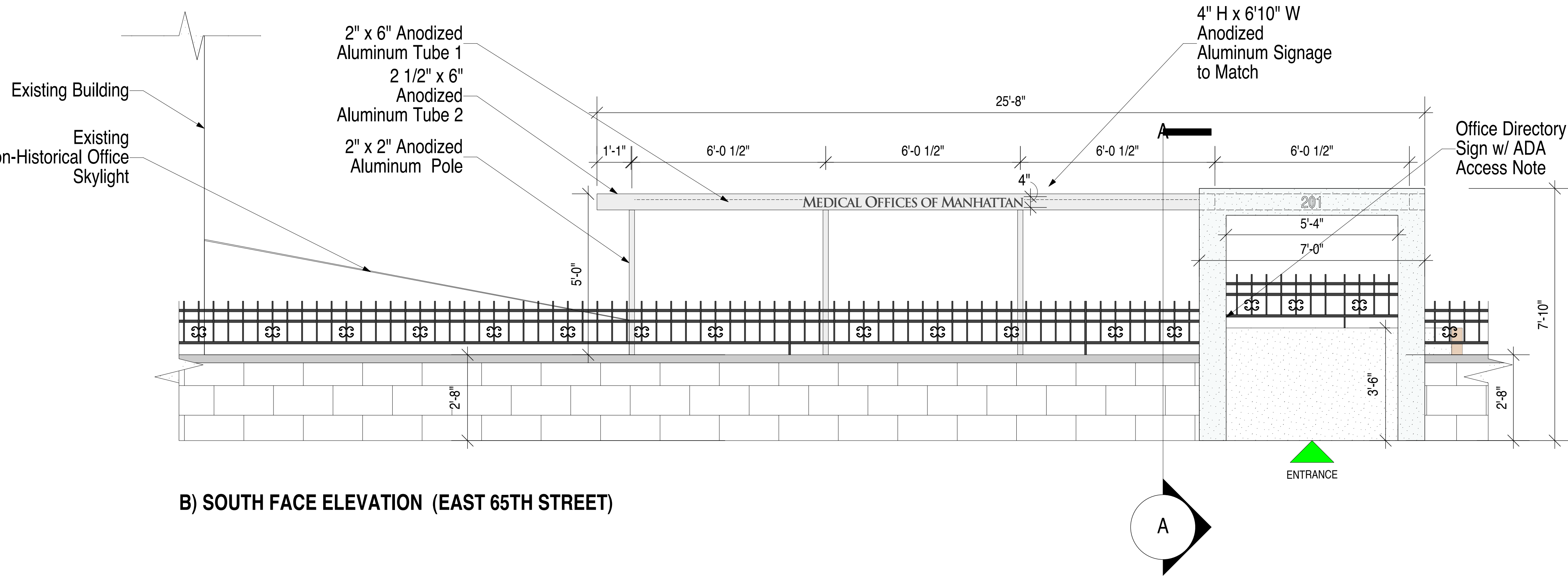
COMMERCIAL AWNING/CANOPY

201 EAST 65TH STREET

AWNING - CANOPY SPECIFICATIONS (Drawing Revised 03/23/22)

- Plexi Glass: 3/4" "Frosted" Plexi Glass
- Frame 1: 2" x 6" White Aluminum Tube
- Frame 2: 2 1/2" x 6" White Aluminum Tube
- Poles: 2" White Aluminum Tube
- Illumination: 1 1/2" x 3' Exterior Indirect LED Dn-Lighting (White LED Light Strips)

NOTE:
ADA ACCESS TO OFFICE EXISTS THROUGH RESIDENTIAL LOBBY ON 66TH STREET ENTRANCE



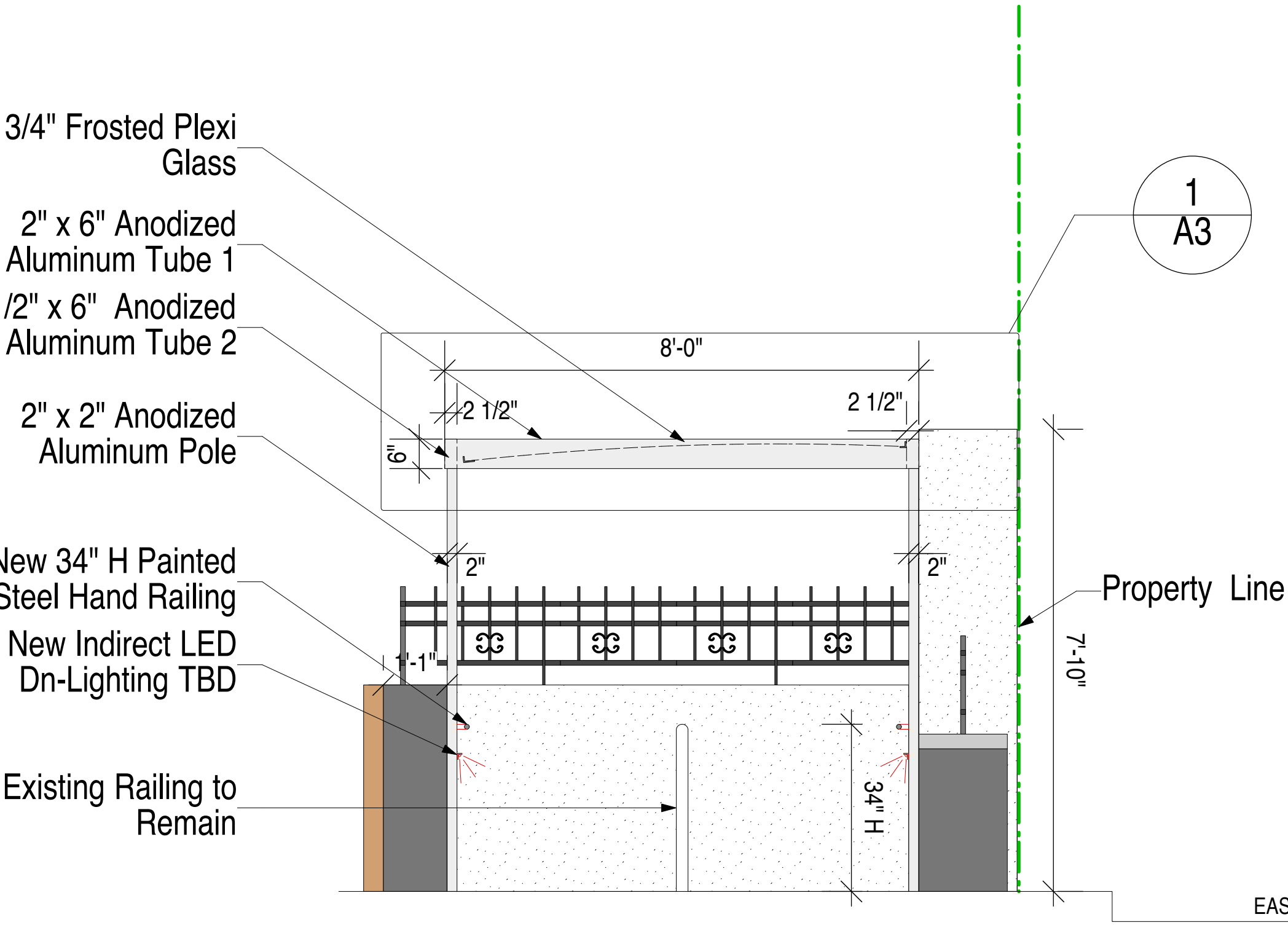
PARTIAL PLOT PLAN

201 East 65th Street
New York, NY 10065

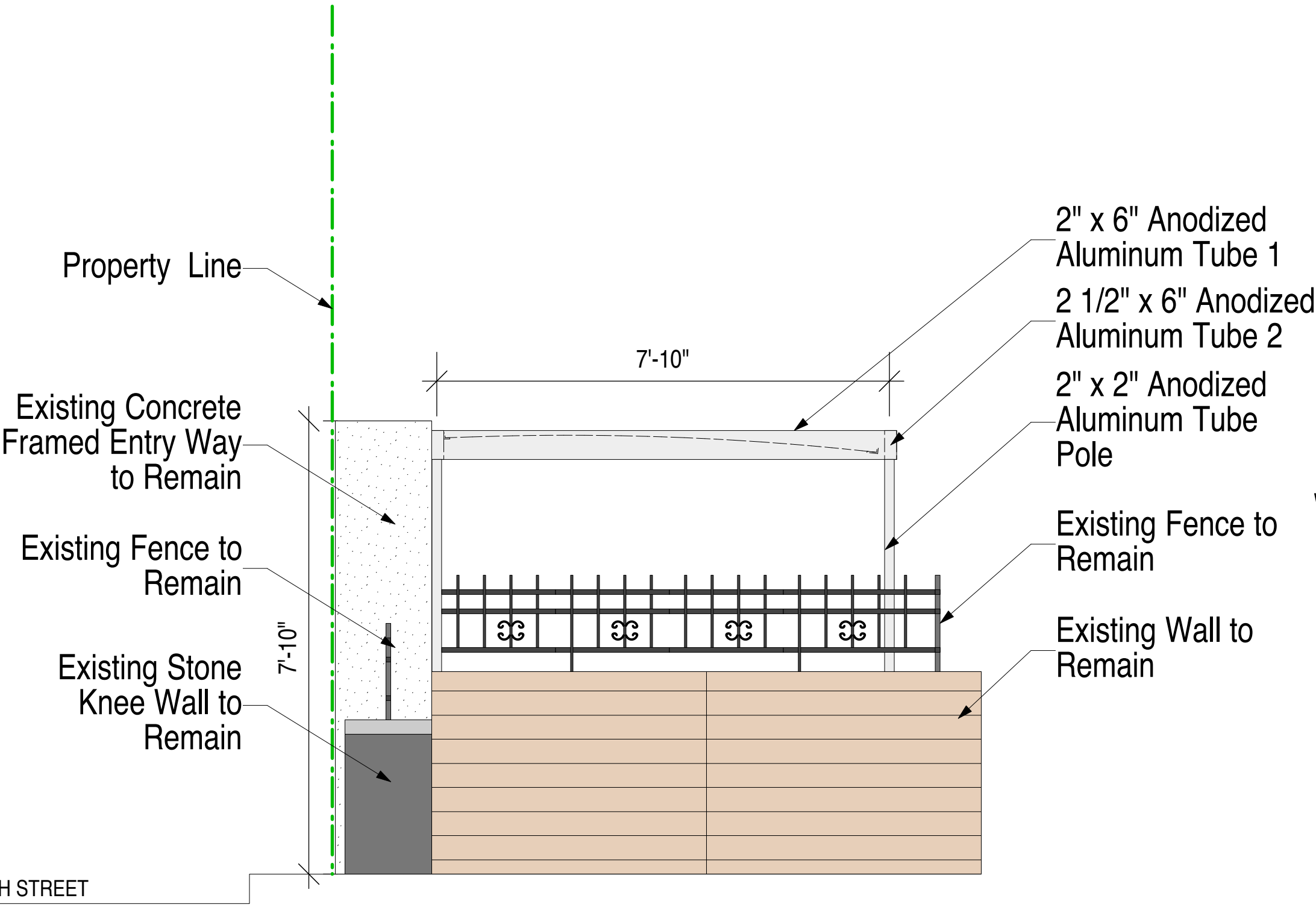
KUSHNER STUDIOS
55 LIBERTY STREET
2ND FLOOR
NEW YORK CITY
10005

212.965.0914
F.: 212.965.0649
E.: INFO@KUSHNERSTUDIOS.COM
W.: WWW.KUSHNERSTUDIOS.COM

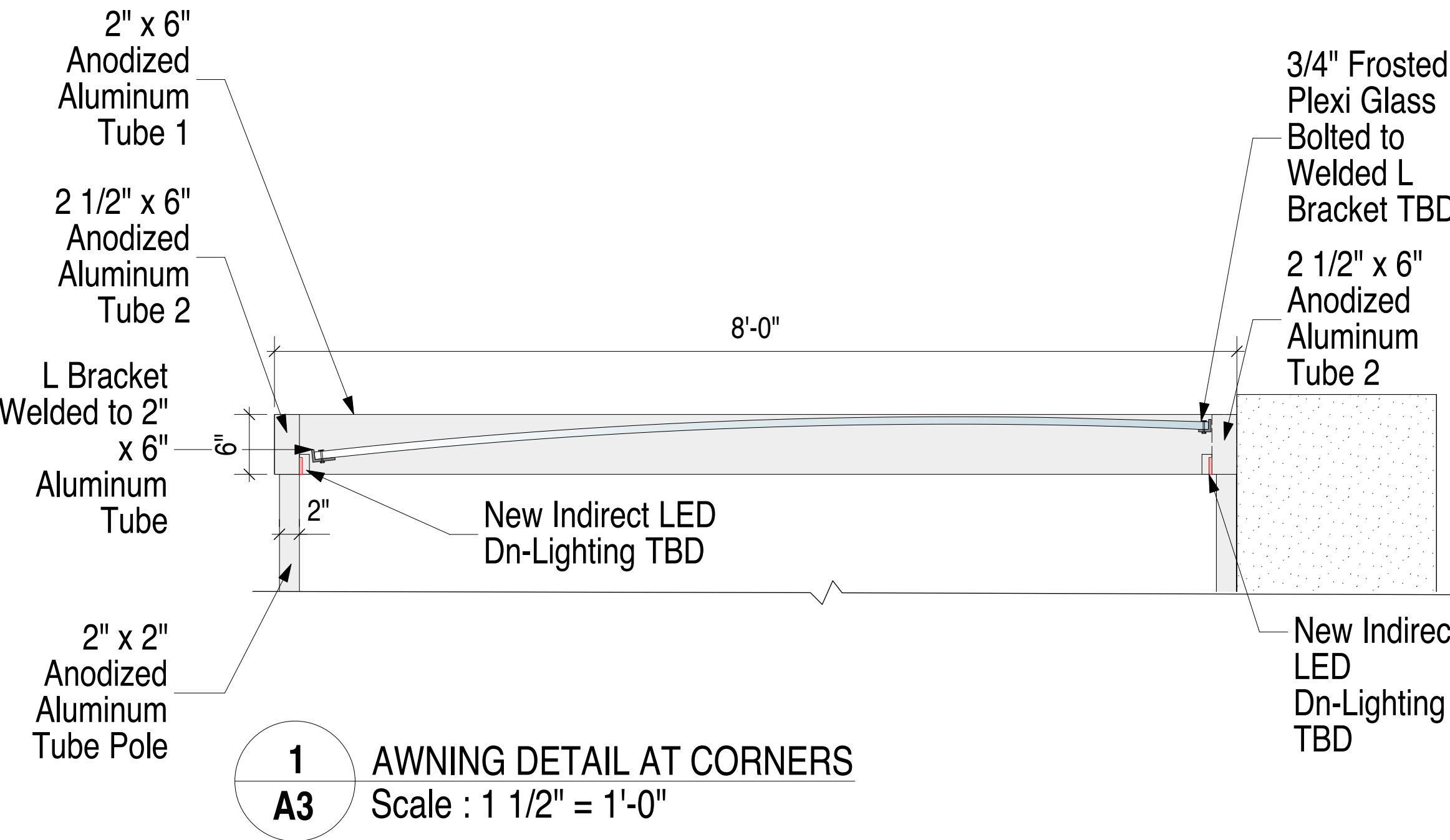
KUSHNER studios



A) WEST SECTION (EAST 65TH STREET)



C) EAST FACE ELEVATION (EAST 65TH STREET)



1
A3
AWNING DETAIL AT CORNERS
Scale : 1 1/2" = 1'-0"

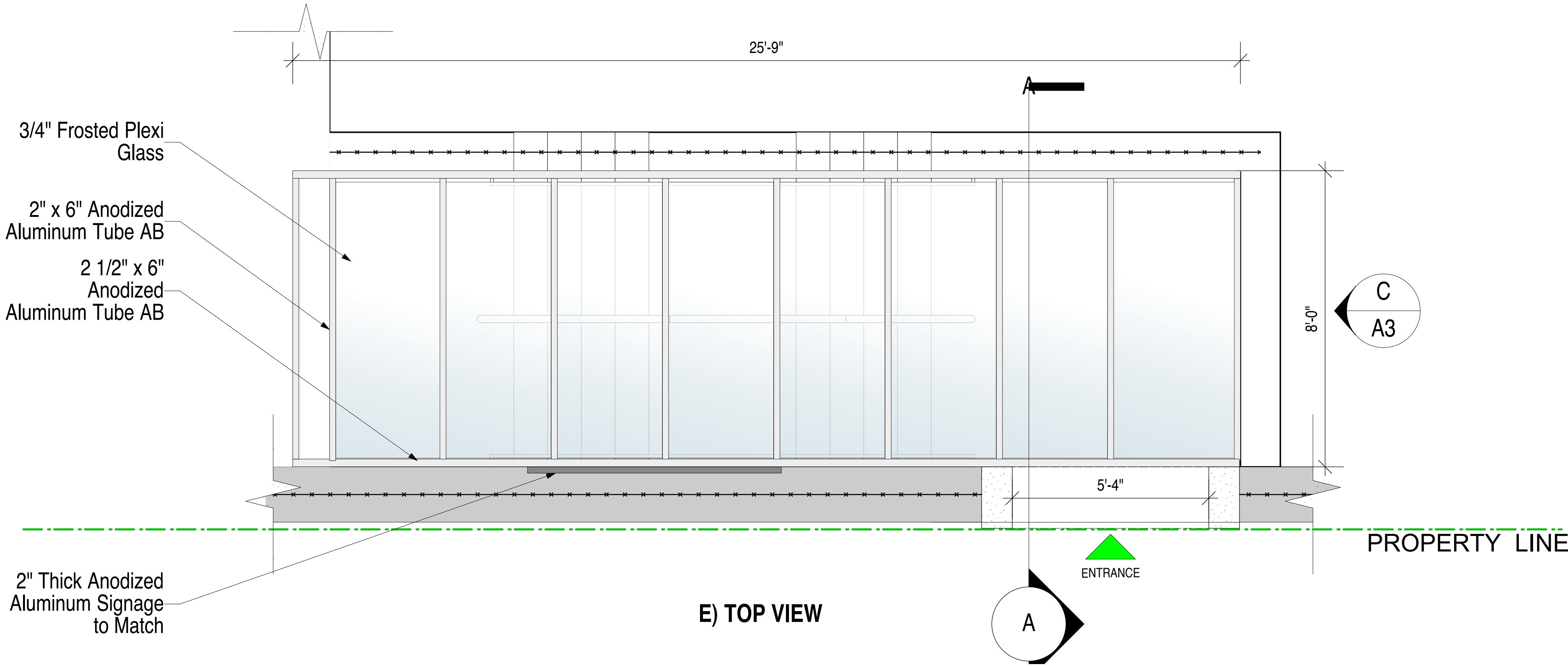
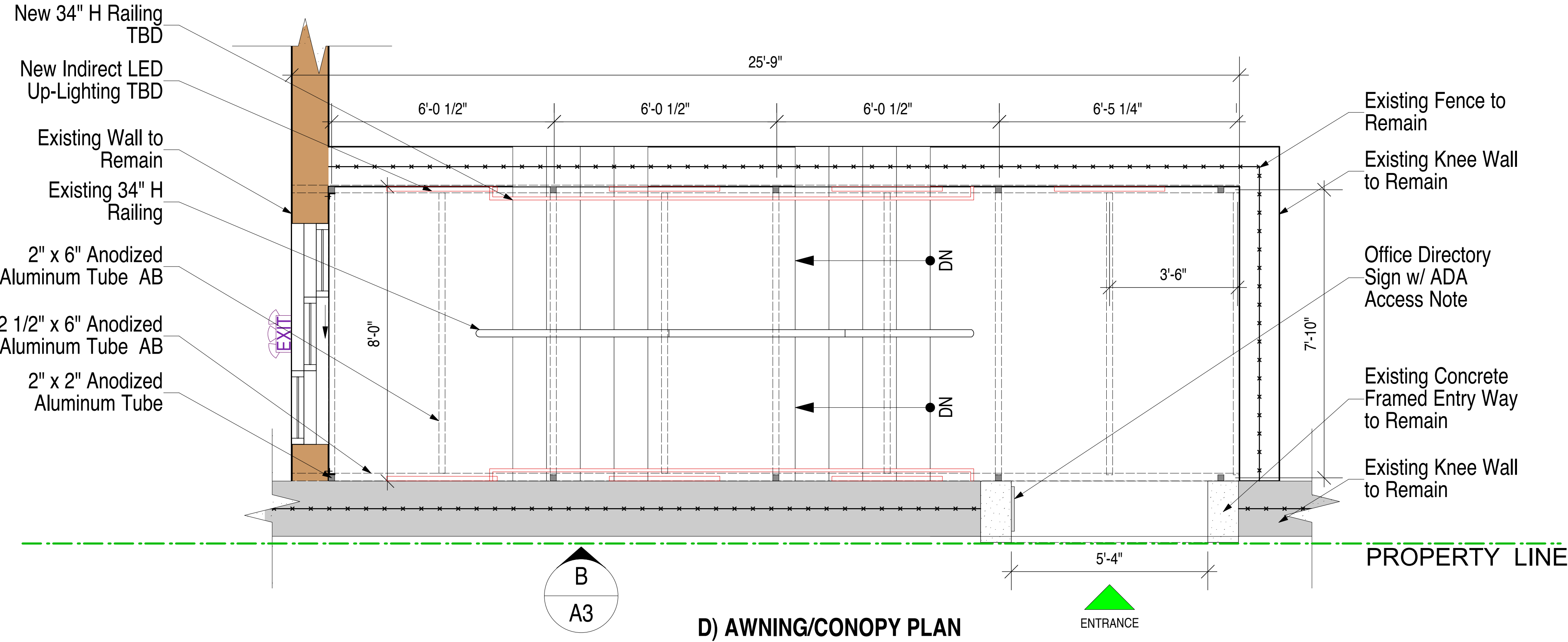
COMMERCIAL AWNING/CANOPY

201 EAST 65TH STREET

AWNING - CANOPY SPECIFICATIONS (Drawing Revised 03/23/22)

- Plexi Glass: 3/4" "Frosted" Plexi Glass
- Frame 1: 2" x 6" White Aluminum Tube
- Frame 2: 2 1/2" x 6" White Aluminum Tube
- Poles: 2" White Aluminum Tube
- Illumination: 1 1/2" x 3' Exterior Indirect LED Dn-Lighting (White LED Light Strips)

NOTE:
ADA ACCESS TO OFFICE EXISTS THROUGH RESIDENTIAL LOBBY ON 66TH STREET ENTRANCE



201 East 65th Street
New York, NY 10065

KUSHNER STUDIOS
55 LIBERTY STREET
2ND FLOOR
NEW YORK CITY
10005
212.965.0914
F.: 212.965.0649
E.: INFO@KUSHNERSTUDIOS.COM
W.: WWW.KUSHNERSTUDIOS.COM

KUSHNER studios

COMMERCIAL AWNING/CANOOPY

201 EAST 65TH STREET

NOTE:
ADA ACCESS TO OFFICE EXISTS THROUGH RESIDENTIAL LOBBY ON 66TH STREET ENTRANCE

EXISTING AWNINGS & CANOPIES ON THE BUILDING



1



2



3



4



5

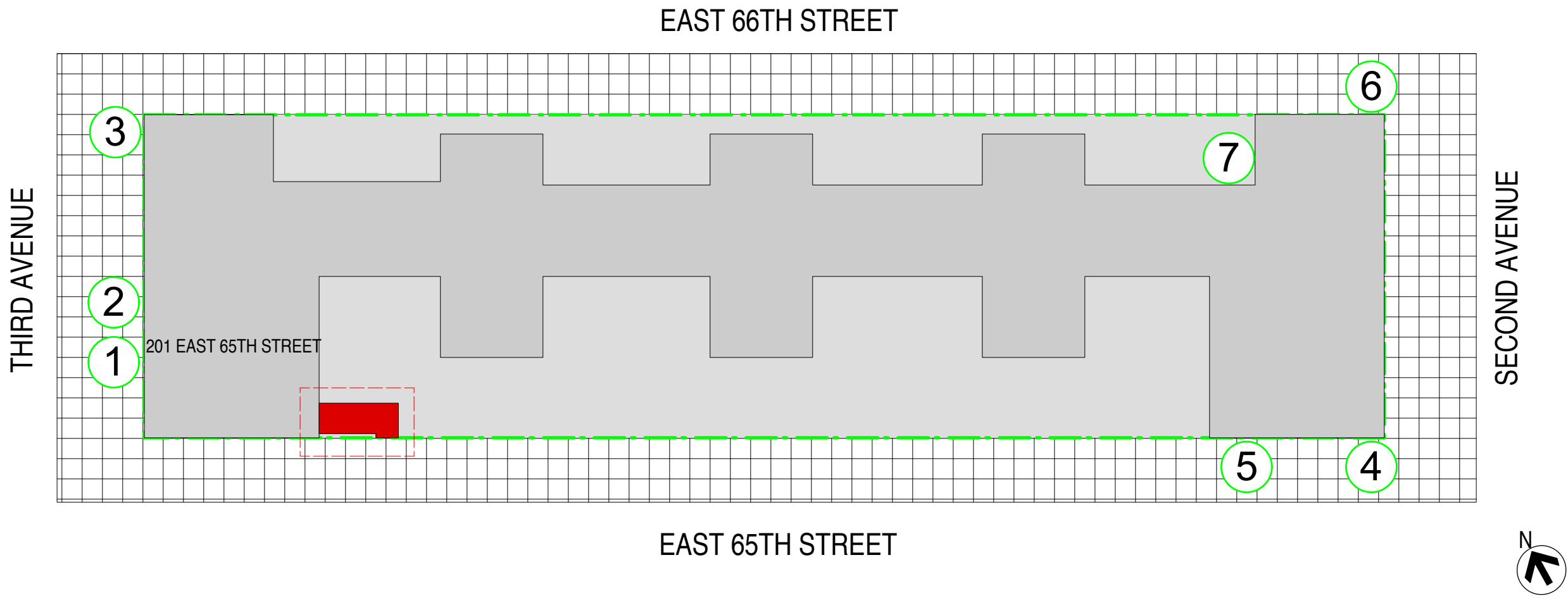


6



7

PLOT PLAN LEGEND



NEW PROPOSED AWNING/CANOOPY



201 East 65th Street
New York, NY 10065

KUSHNER STUDIOS
55 LIBERTY STREET
2ND FLOOR
NEW YORK CITY
10005
212.965.0914
F.: 212.965.0649
E.: INFO@KUSHNERSTUDIOS.COM
W.: WWW.KUSHNERSTUDIOS.COM

KUSHNER studios