

North
PLOT PLAN & PHOTO LOG
SCALE: 1/16" = 1'-0"



1 SITE PHOTOGRAPH



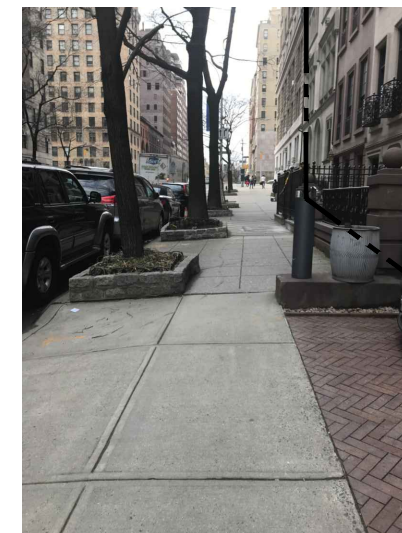
2 SITE PHOTOGRAPH



3 SITE PHOTOGRAPH



4 SITE PHOTOGRAPH



5 SITE PHOTOGRAPH

PLAN
SHOWING LOCATION OF
NEW SIDEWALK PLANTED AREA
WITH LIGHTING
TO BE LOCATED AT
109 EAST 79TH STREET
BOROUGH OF MANHATTAN
TO ACCOMPANY APPLICATION
DATED 11/01/2021
OF
79TH OWNER, LLC
TO THE DEPARTMENT OF
TRANSPORTATION CITY OF NEW YORK
79TH OWNER, LLC
BY:
VICTOR SIGOURA, PARTNER, APPLICANT
ZONING INFORMATION
BLOCK: 1508
LOT: 04
ZONING DISTRICT: R8B
ZONING MAP: 12C

CHARACTER OF MATERIALS:
SEE FULL LIST ON PAGE 5
TOTAL ESTIMATED COST FOR REMOVAL OF
PLANTERS AND RESTORATION OF THE
SIDEWALK: \$25,000.00

NOTE: PROPOSED IMPROVEMENTS
SHOWN IN RED

ARCHITECT

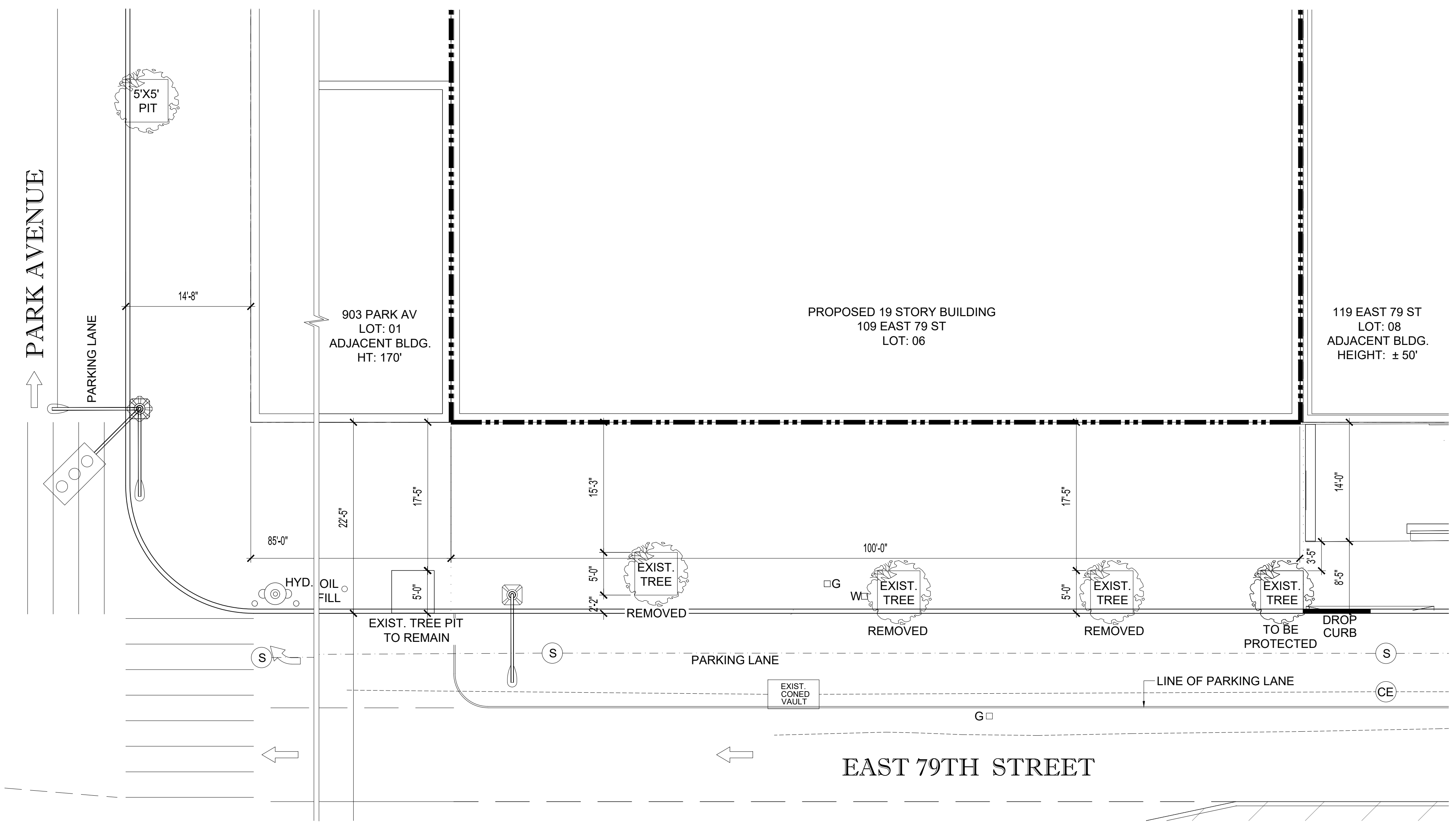


68 WHITEHALL ST. LYNBROOK, NY 11563
(516) 256-0317
www.ggastudios.com








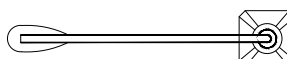
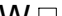

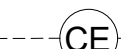
© GOLDEN GLOW ARCHITECTURAL STUDIOS, DPC 2020



DATE: 08/19/2021
CHECKED BY: LAS
DRAWN BY: SL
SCALE: AS NOTED
DWG NUMBER:
X-100.00
PAGE NO: 01 OF 07



North
AREA DETAIL - EXISTING PLAN
SCALE: 1/8" = 1'-0"

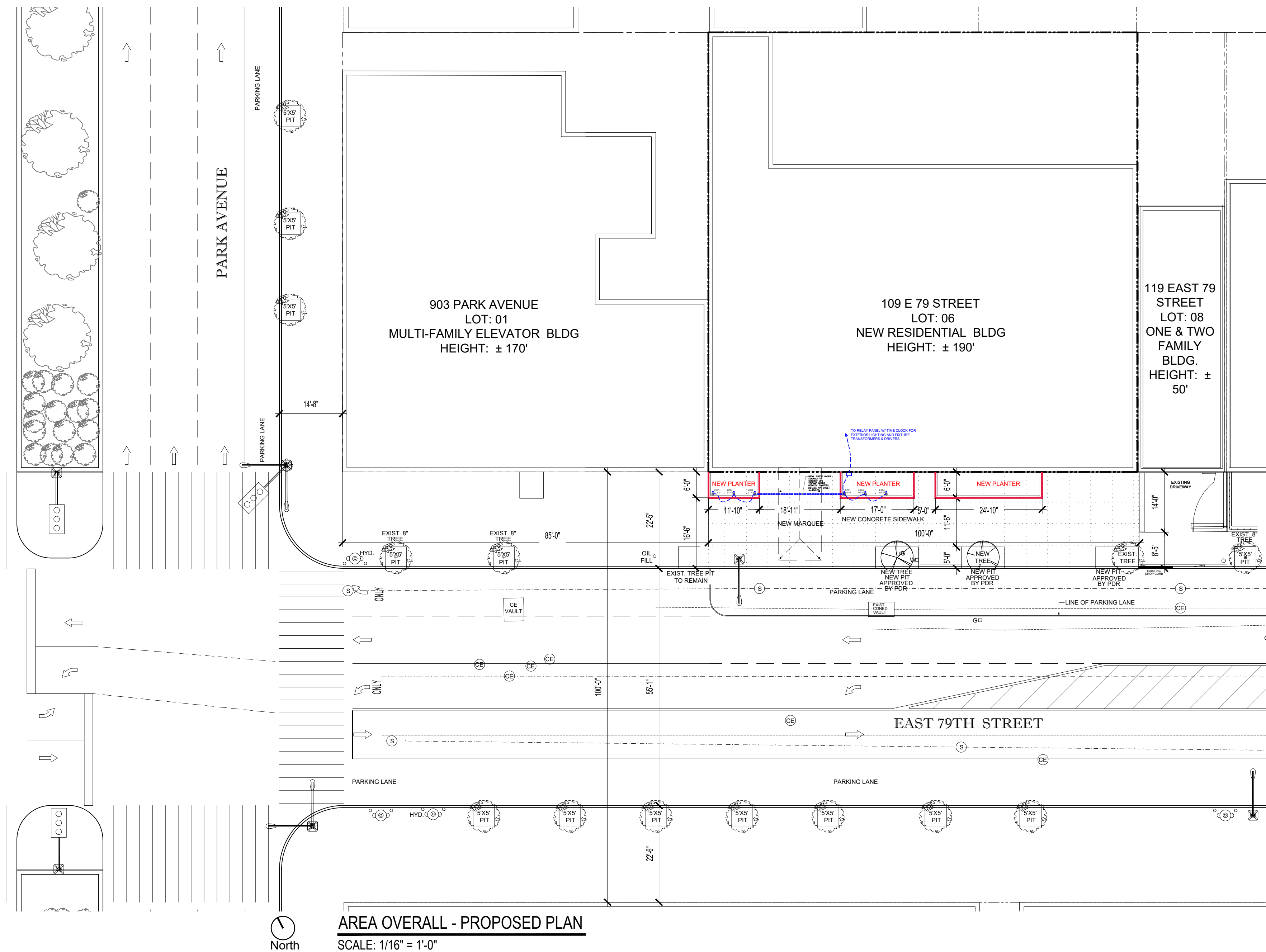
LEGEND							
	EXIST. TREE & TREE PIT		EXIST. DROP CURB		EXIST. FIRE HYDRANT		EXIST. OIL FILL
			EXIST. GAS VALVE		PROPERTY LINE		EXIST. SEWER LINE
	EXIST. LIGHTPOLE		EXIST. WATER VALVE		EXIST. CONED VAULT		EXIST. ELECTRICAL LINE

ARCHITECT

68 WHITEHALL ST. LYNBROOK, NY 11563
(516) 256-0317
www.ggastudios.com
© GOLDEN GLOW ARCHITECTURAL STUDIOS, DPC 2020

SEAL

DATE: 08/19/2021
CHECKED BY: LAS
DRAWN BY: SL
SCALE: AS NOTED
DWG NUMBER: X-101.00
PAGE NO: 02 OF 07



PLANTER LIGHTING NOTE:
FACADE LIGHTING SHALL BE CONNECTED TO THE PROGRAMMABLE LOBBY LIGHTING CONTROL SYSTEM. THE SYSTEM SHALL INCLUDE A PHOTO SENSOR TO AUTOMATICALLY TURN ON LIGHTING IN THE ABSENCE OF DAYLIGHT AND TURN OFF THE LIGHTING WHEN SUFFICIENT DAYLIGHT IS AVAILABLE. LIGHTING CONTROL SYSTEM SHALL ALSO HAVE AN ASTRONOMIC TIME CLOCK IN ORDER TO AUTOMATICALLY REDUCE THE CONNECTED EXTERIOR LIGHTING POWER BY AT LEAST 30 PERCENT FROM 12 MIDNIGHT UNTIL 6AM.

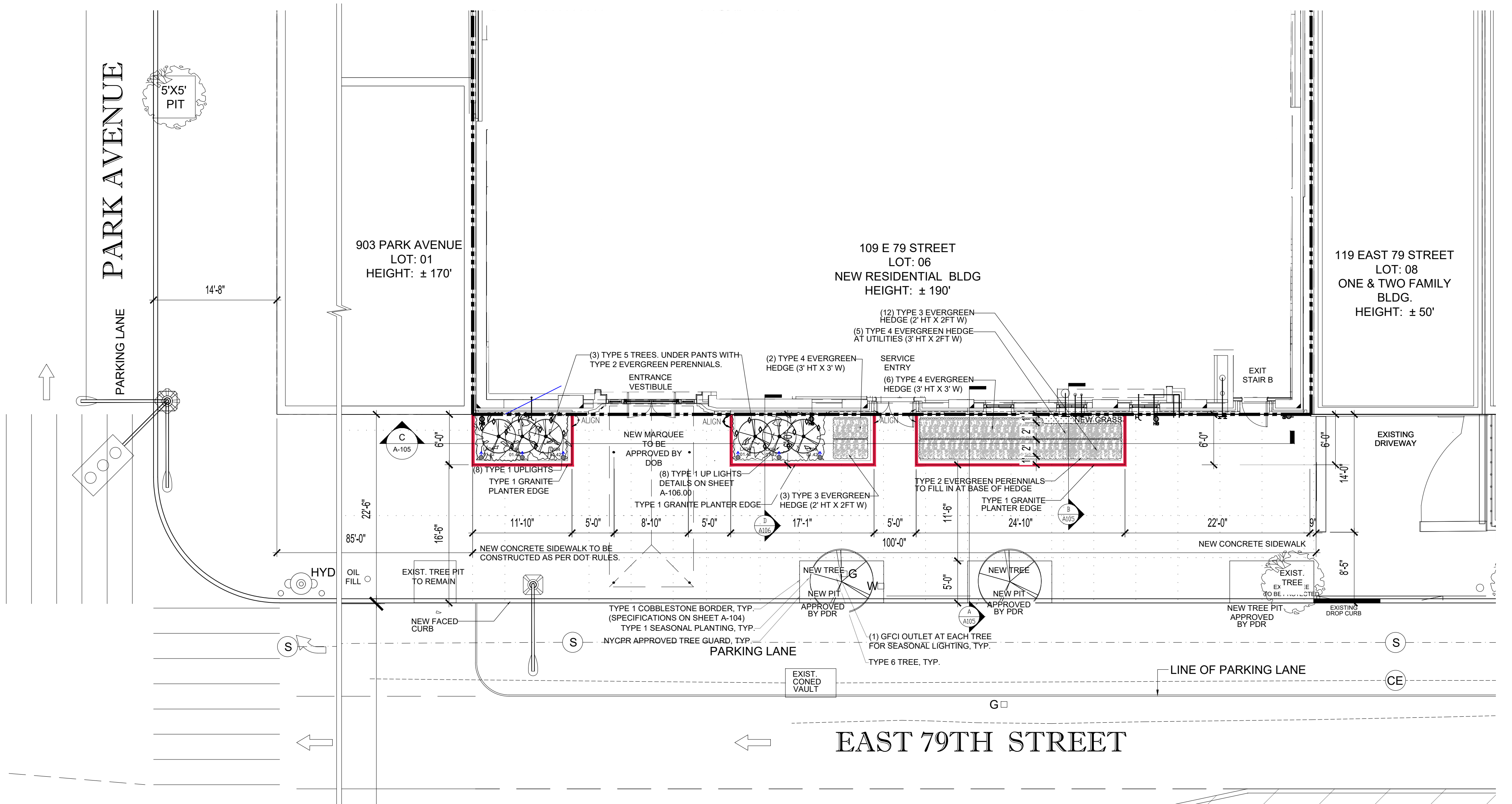
LEGEND											
	EXIST. TREE & TREE PIT		NEW STREET TREE		EXIST. DROP CURB		EXIST. FIRE HYDRANT		EXIST. OIL FILL		EXIST. SEWER LINE & MANHOLE
	EXIST. LIGHTPOLE		EXIST. GAS VALVE		EXIST. WATER VALVE		PROPERTY LINE		EXIST. CONED VAULT		EXIST. ELECTRICAL LINE & MANHOLE

ARCHITECT

68 WHITEHALL ST. LYNBROOK, NY 11563
(516) 256-0317
www.ggastudios.com
© GOLDEN GLOW ARCHITECTURAL STUDIOS, DPC 2020

SEAL

DATE: 08/19/2021
CHECKED BY: LAS
DRAWN BY: SL
SCALE: AS NOTED
DWG NUMBER: X-102.00
PAGE NO: 03 OF 07



AREA DETAIL - PROPOSED PLAN
SCALE: 1/8" = 1'-0"

LEGEND							
	EXIST. TREE & TREE PIT		NEW STREET TREE		EXIST. DROP CURB		HYD. EXIST. FIRE HYDRANT
	NEW STREET TREE		EXIST. GAS VALVE		PROPERTY LINE		OIL FILL EXIST. OIL FILL
	EXIST. LIGHTPOLE		EXIST. WATER VALVE		EXIST. CONED VAULT		EXIST. SEWER LINE
							EXIST. ELECTRICAL LINE

ARCHITECT

GGA STUDIOS DPC

68 WHITEHALL ST. LYNBROOK, NY 11563
(516) 256-0317
www.ggastudios.com
© GOLDEN GLOW ARCHITECTURAL STUDIOS, DPC 2020

SEAL

DATE: 08/19/2021
CHECKED BY: LAS
DRAWN BY: SL
SCALE: AS NOTED
DWG NUMBER: X-103.00
PAGE NO: 04 OF 07

Front Street Area		
Hardscape		
Type 1 granite curb by GC	> Granite block to frame front area planting bed > 6" W x 5" H (exposed) x 124 lineal feet, see plan 1 on sheet X-103 > Minimum segment lengths to be 6ft	GC scope. To be coordinated with architects
Type 1 cobble stone by LC	> Granite cobble stone > 6"x8" x 162 lineal feet, see plan 1 on sheet X-103	
NYCPR tree guards by LC	> Metal guards, resource: https://www.nycgovparks.org/trees/tree-care/tree-guards > Tree guard style C > 20' lineal feet per tree pit, see plan on sheet X-103 > Quantity: 3 Planting bed	Refer to NYCPR website
Planting		
Type 5 Tree by LC	> Type: Carpinus betulus 'Fastigiata' or Juniper virginiana 'Taylor' > 12' H x 4' W > Quantity: 6	RRP to select specimen
Type 6 Tree by LC	> Specimen: Specimen grade honeylocust > Approved list: www.nycgovparks.org/trees/street-tree-planting/species-list > 18' H x 6' W > Quantity: 3	RRP to select specimen
Type 3 Evergreen by LC	> Buxus Sempervirens hedging > 2'-0" H x 2'-0" W spaced to create a continuous clipped hedge	
Type 4 Evergreen Typical by LC	> Buxus Sempervirens hedging > 3' H x 3' W spaced to create a continuous clipped hedge	
Type 4 Evergreen at Utilities by LC	> Buxus Sempervirens hedging > 3' H x 2' W spaced to create a continuous clipped hedge	
Type 2 Evergreen perennial by LC	> Pachysandra terminalis > Flats, spaced 4" O.C. > Coverage area: 140 Sqft	LC to plant full coverage on open ground
Type 1 Seasonal planting by LC	> Seasonal planting mix > Size: 1 Gal > Spacing 12" O.C.	LC to plant full coverage
Lighting		
Type 1 Uplight by LC	> (16) Uplights, see plan sheet X-103 for location. Actual layout to be directed by LA and lighting designer in the field > Lighting Designer: Chris Ventresca for fixture specifications	RRP to coordinate lighting with Chris Ventresca
Irrigation		
Irrigation by LC	Fully automated drip irrigation system in all planters	RRP to coordinate with LC controller box location
Soils for planters and street tree pits		
Planting Soil profiles in planters shall be as follows:	>Trees: excavate to the limis of planter +6" beyond bottom of rootball, backfill entire tree pit with planting soil. Contractor to assume 42" of planting soil depth at tree. Shrubs, perennials and groundcovers: excavate to limits of planters and place minimun 24" depth of planting soil in planters. All subsoil conditions below planting soil profiles to be free of constructions debris. infiltration must be a minimun of 1" per hour at full saturation. i. Contractor to peform subsoil percolation tests in at least 3 locations prior to placing planting soil. ii .Depending on test results additional site drainage may be required including, but not limited to over excavation and placement of a 12" layer of clean washed pea gravel at the base of the planting soil. The drainage gravel depth required will be at the Landscape Architect's discretion. Install planting soil in 6" lifts and compact between lifts using a vibratory plate compactor.	
Planting Soil shall be composed of equal parts:	>USDA classified Sandy Loam >Coarse sand > Well decomposed organic matter. i. Contractor to provide a sample, information on source of material(s) and information describing parent material(s) of organic matter. placing planting soil. > Contractor toprovide test data showing soil texture analysis and chemical analysis including macro and micro nutrient levels and pH for proposed planting soil.	

ARCHITECT

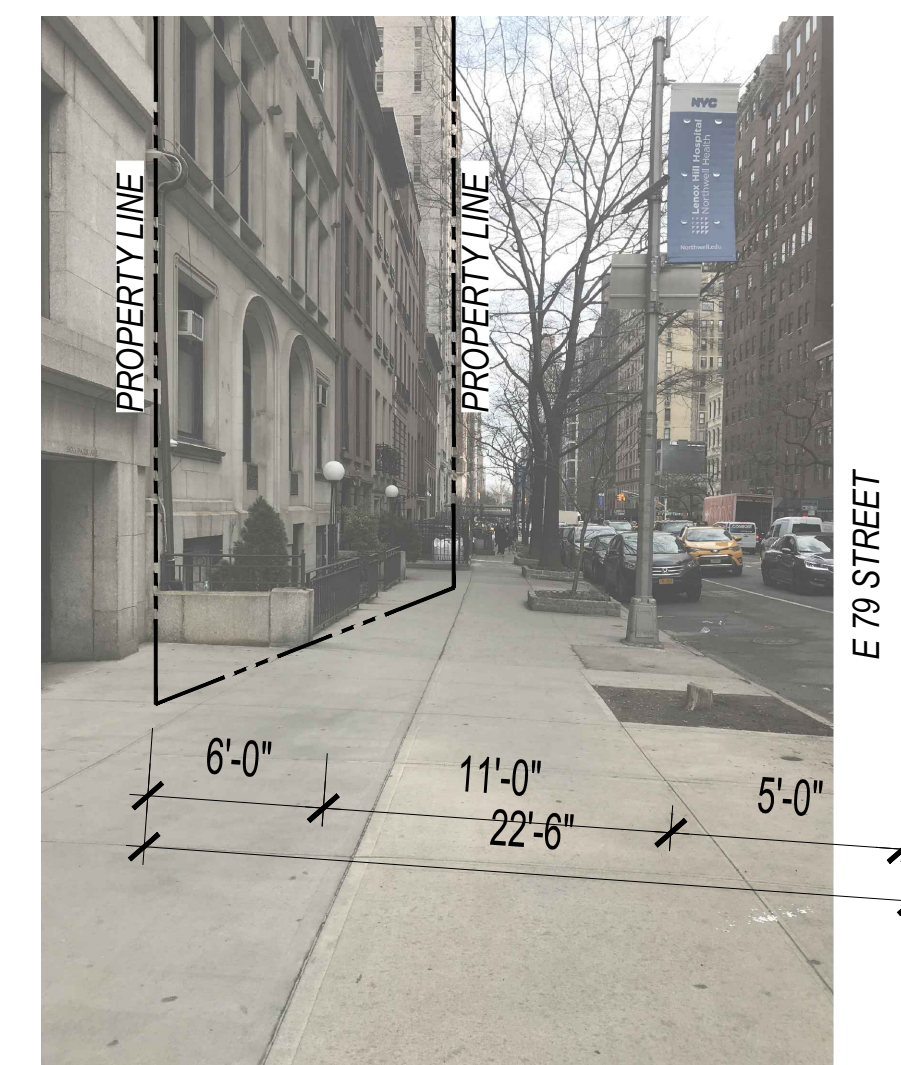


68 WHITEHALL ST. LYNBROOK, NY 11563
(516) 256-0317
www.ggastudios.com
© GOLDEN GLOW ARCHITECTURAL STUDIOS, DPC 2020

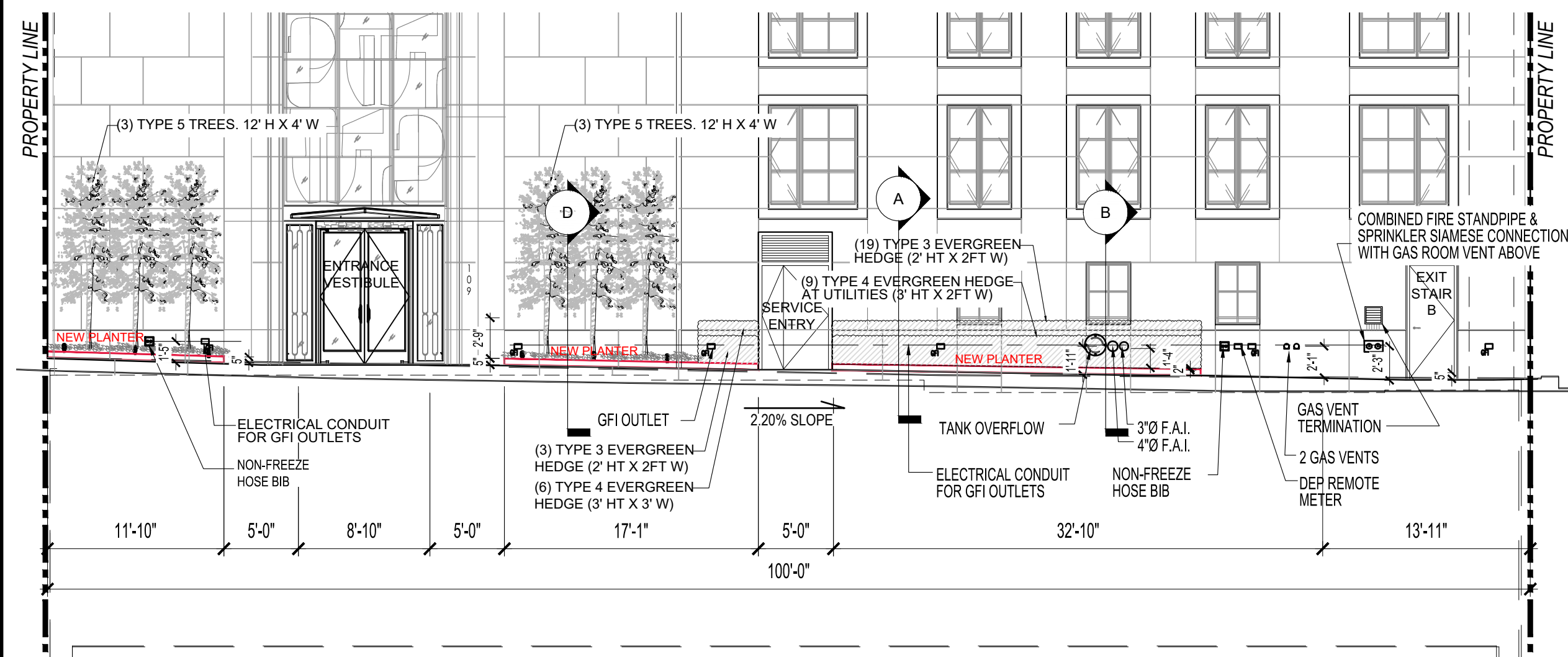
SEAL



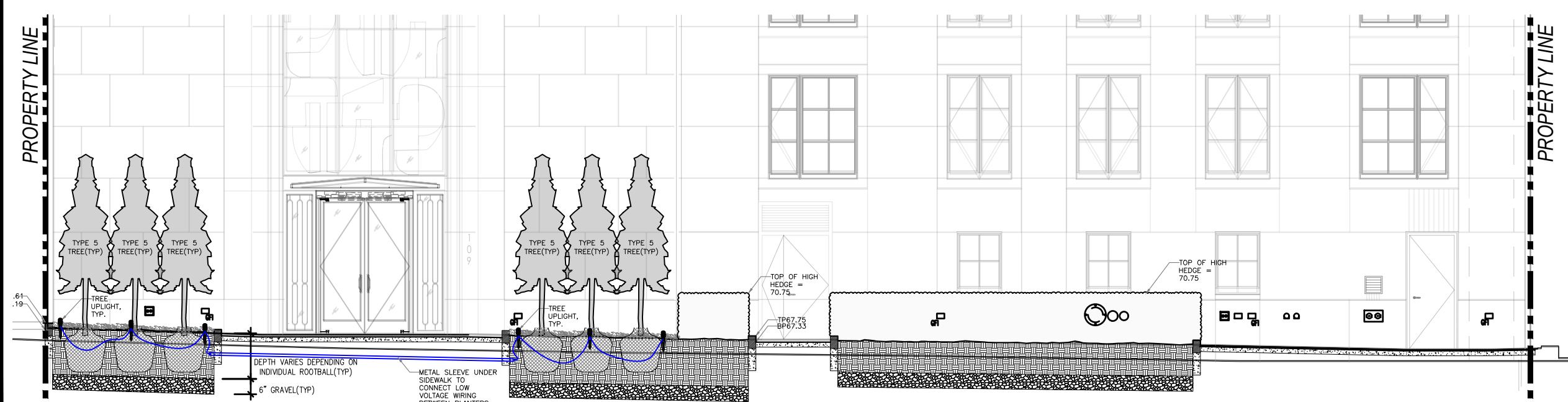
DATE: 08/19/2021
CHECKED BY: LAS
DRAWN BY: SL
SCALE: AS NOTED
DWG NUMBER:
X-104.00
PAGE NO: 05 OF 07



EXISTING ELEVATION (FRONTAL)
SCALE: NOT TO SCALE



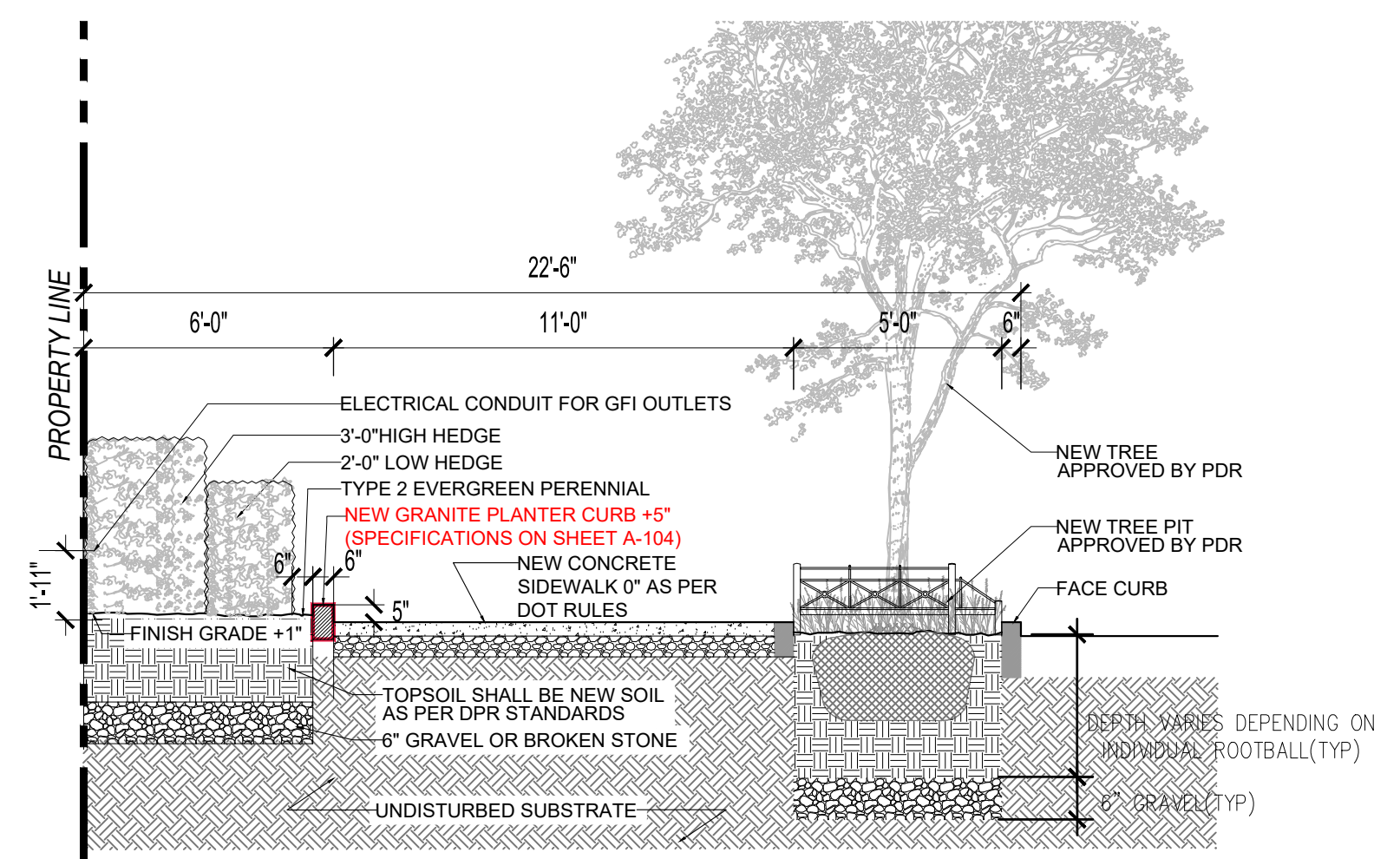
PROPOSED ELEVATION (FRONTAL)
SCALE: 1/8" = 1'-0"



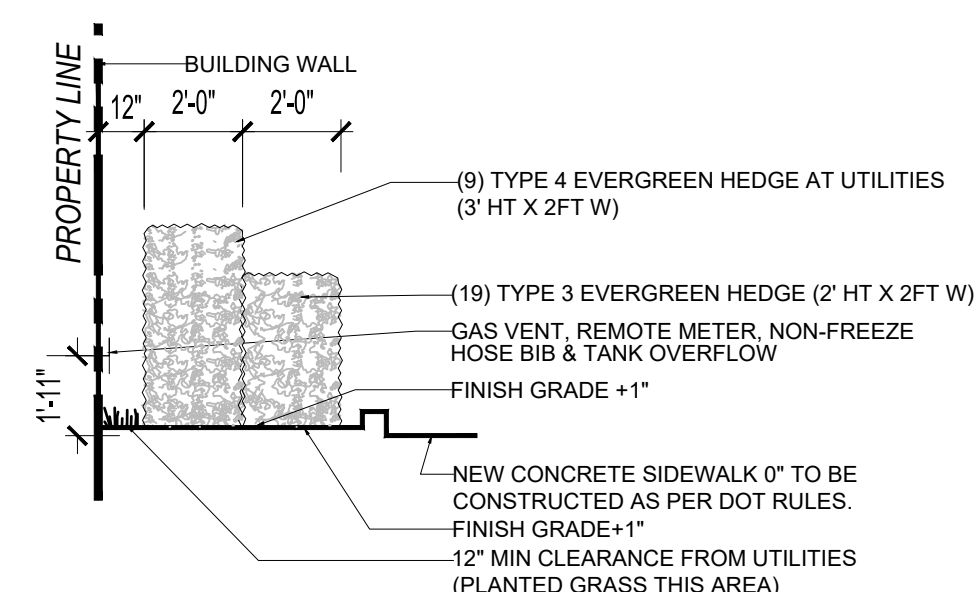
DETAILS ON SHEET A-106.00

PROPOSED SECTION (THROUGH PLANTERS)

SCALE: 1/8" = 1'-0"



PROPOSED SECTION (SIDEWALK VIEW)
SCALE: 1/4" = 1'-0"



PROPOSED SECTION (FIXTURE CLEARANCE)
SCALE: 1/4" = 1'-0"

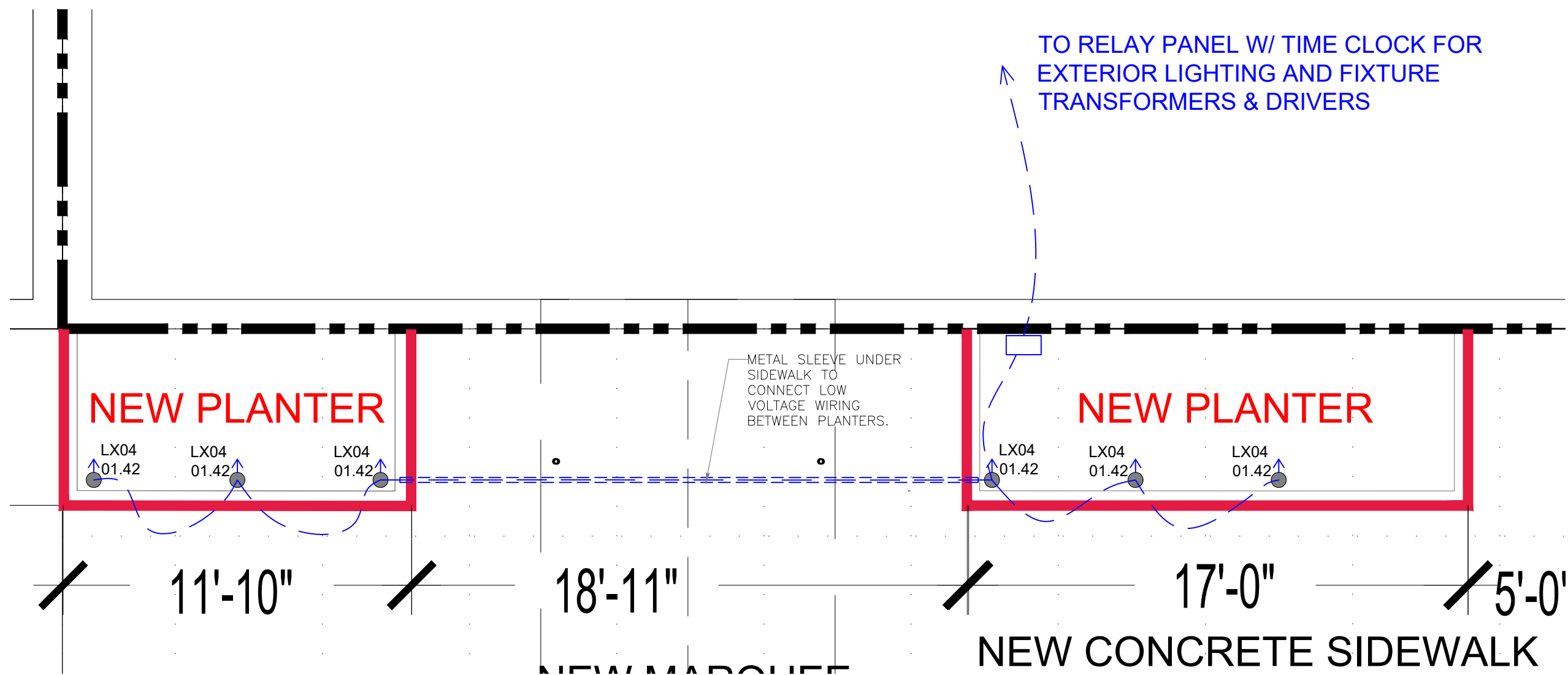
ARCHITECT



68 WHITEHALL ST. LYNBROOK, NY 11563
(516) 256-0317
www.ggastudios.com
© GOLDEN GLOW ARCHITECTURAL STUDIOS, DPC 2020

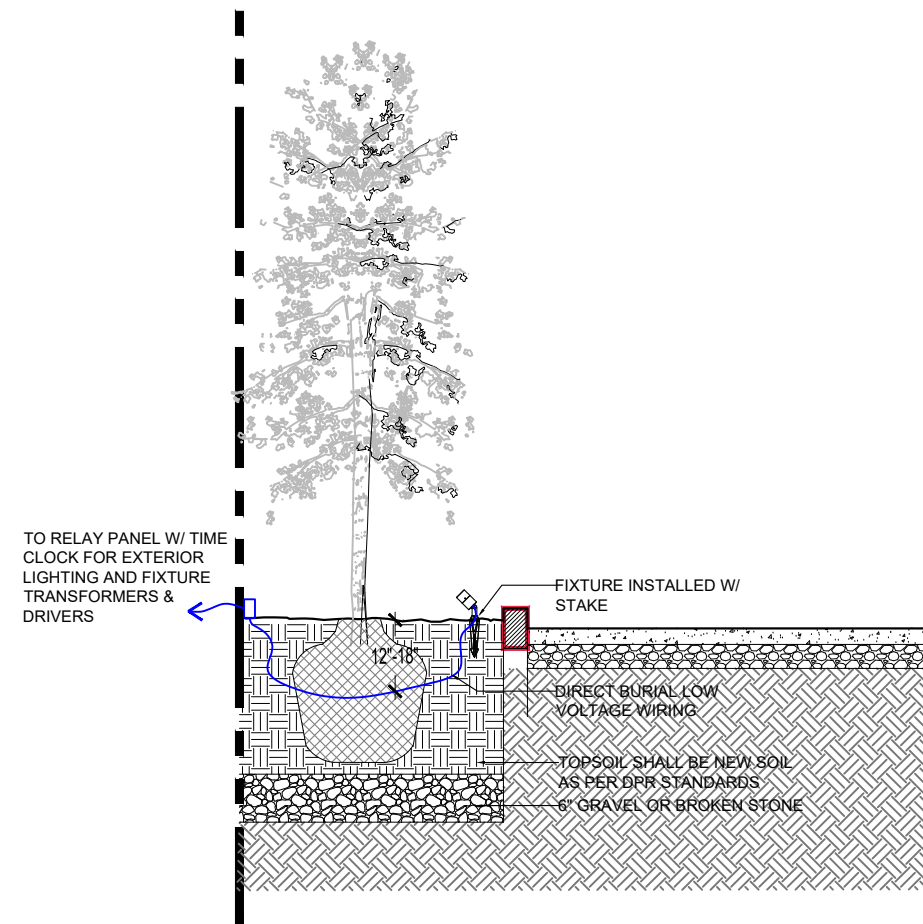


DATE:	08/19/2021
CHECKED BY:	LAS
DRAWN BY:	SL
SCALE:	AS NOTED
DWG NUMBER:	X-105.00
PAGE NO:	06 OF 07



PROPOSED LIGHTING PLAN

SCALE: 1/4" = 1'-0"



PROPOSED LIGHTING SECTION

SCALE: 1/4" = 1'-0"

TYPE LX04

LX04 LANDSCAPE FIXTURE WILL BE STAKE MOUNTED INTO SOIL

NITE STAR II (MR16 LAMP)

IP66 RATED

DATE:

PROJECT:

TYPE:

CATALOG NUMBER LOGIC:

CATALOG NUMBER LOGIC

Example: B - NSI - MR - 369 - SAP - 9 - 11 - 360SL

MATERIAL

(Blank) - Aluminum B - Brass

SERIES

NSI - Nite Star II

SOURCE

MR - MR16 Lamp

LAMP TYPE

0 - MR16 Halogen Lamp (Furnished by others)

MR16 LED (This choice requires lamp number section)*

FINISH (See page 2 for full-color swatches)

Standard Finish: (R22) 12% BLP, BLM, WHF, WHW, SAP, VER)

Premium Finish: (BPP, RMG, ACQW, BCM, BGE, BPP, CAP, CMG, CRI, CRM, HUG, MDS, NBP, OCP, RMG, SDS, SMG, TMS, WCP, WIR)

Also available in RAL Finishes

Brass Finishes (MAC, POL, MIT)

LENS TYPE

9 - Clear (Standard)

10 - Spread 12 - Soft Focus 13 - Rectilinear

SHIELDING

11 - Honeycomb Baffle

OPTIONS

360SL - Knuckle Mounting System**

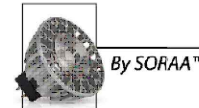
*Lamp details available on the 3rd page.

**The 360SL cost is already included in the price of UPMA, LPM, dual, and Power Canopy

W/ SORAA SM16-07-36D-827-H1 LAMP

SPECIFICATIONS

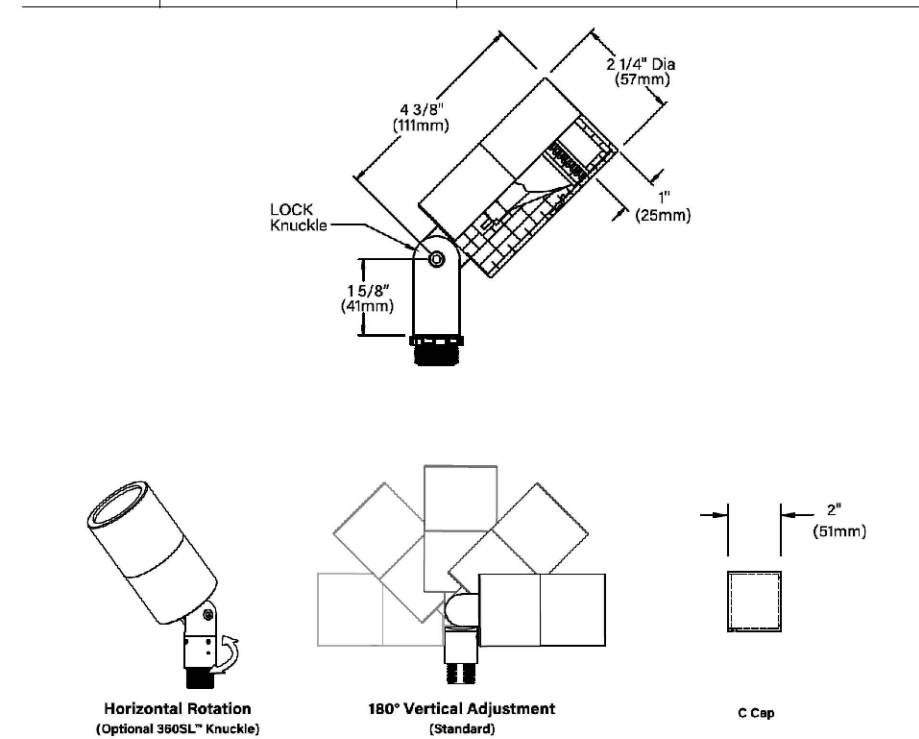
ELECTRICAL	WATTAGE WIRING TRANSFORMER	Teflon® coated wire, 18AWG, 600V, 250° C rated and certified to UL 969 standard. Leads extend 6" beyond knuckle. For use with 12 VAC remote transformer.
PHYSICAL	MATERIALS BODY KNUCKLE CAP LENS LAMP SOCKET HARDWARE FINISH WARRANTY CERTIFICATION & LISTING	Furnished in Copper-Free Aluminum (Type 6061-T6), or Brass (Type 360). Fully machined from solid billet. Unibody design provides enclosed, water-proof wiring and heat sink to maximize lamp life. Integral knuckle for maximum mechanical strength. High temperature, silicone "O" Ring provides watertight seal. The LOCK® (Locking "O" Ring Compression Knuckle) is comprised of two components. The first is integral to the body and features an interior, machined taper. The second is machined from solid billet and features a second, reverse angle taper. The resultant mechanical taper lock allows a full 180° vertical adjustment without the use of standard tools, which inherently limit aiming. High temperature, silicone "O" Ring provides water-tight seal and compressive resistance to maintain fixture position. Design withstands 73 lb. static load prior to movement to ensure decades of optical alignment. 3/4" pipe thread for mounting. Optional 360SL additionally provides ballast source control with 360° horizontal rotation in addition to vertical adjustment. Fully machined, 1" deep cutoff with flush mounted lens. Accommodates up to (2) lens or lower media. Shock resistant, tempered, clear glass lens is factory adhered to fixture cap and provides hermetically sealed optical compartment. For use with 50 watt maximum, bi-pin MR16 lamps. Not for use with IR technology lamps. Halogen source by others. *Except GE Light Q42MR16/C/VNSP9 (EZY). Specification grade, ceramic body lamp holder. GU5.3 base. Nickel alloy contacts and heat resistant, spring loaded, stainless steel lamp retaining clips. Tamper-resistant, stainless steel hardware. LOCK® aiming screw is additionally black oxide treated for additional corrosion resistance. StarGuard®, our exclusive RoHS compliant, 15 stage chrome-free process cleans and conversion coats aluminum components prior to application of Class 9, TGIC polyester powder coating. Brass components are available in powder coat or handcrafted metal finish. 5 year limited warranty. UL Listed. Certified to CAN/CSA/ANSI Standards. RoHS compliant. Suitable for indoor or outdoor use. Suitable for use in wet locations. Suitable for installation within 4' of the ground. Made in USA.



MR16 LED LAMP

PROJECT:	
TYPE:	
CATALOG NUMBER:	
LAMP(S):	
NOTES:	

NITE STAR II (MR16 LAMP)			IP66 RATED
DATE:	PROJECT:	TYPE:	



B-K Lamp # 359 Base: GU5.3 Bi-Pin Input Voltage: 12V CCT: 2700K Beam: 10° Spot	Mfg. #: MR16- SM16-07-10D-827-H1 Wattage: 7.5W Lamp Efficacy: 77 (lm/W) Rated Life: 35,000 hrs	CBCP (cd): 8000 CRI: >90 Power Factor: 0.92 Dimmable: Yes Lumens: 575	Distance Feet 1 2 3 4 5 6 7 8 9 10 11 12 13 14 15 16 17 18 19 20 21 22 23 24 25 26 27 28 29 30 31 32 33 34 35 36 37 38 39 40 41 42 43 44 45 46 47 48 49 50 51 52 53 54 55 56 57 58 59 60 61 62 63 64 65 66 67 68 69 70 71 72 73 74 75 76 77 78 79 80 81 82 83 84 85 86 87 88 89 90 91 92 93 94 95 96 97 98 99 100 101 102 103 104 105 106 107 108 109 110 111 112 113 114 115 116 117 118 119 120 121 122 123 124 125 126 127 128 129 130 131 132 133 134 135 136 137 138 139 140 141 142 143 144 145 146 147 148 149 150 151 152 153 154 155 156 157 158 159 160 161 162 163 164 165 166 167 168 169 170 171 172 173 174 175 176 177 178 179 180 181 182 183 184 185 186 187 188 189 190 191 192 193 194 195 196 197 198 199 200 201 202 203 204 205 206 207 208 209 210 211 212 213 214 215 216 217 218 219 220 221 222 223 224 225 226 227 228 229 230 231 232 233 234 235 236 237 238 239 240 241 242 243 244 245 246 247 248 249 250 251 252 253 254 255 256 257 258 259 260 261 262 263 264 265 266 267 268 269 270 271 272 273 274 275 276 277 278 279 280 281 282 283 284 285 286 287 288 289 290 291 292 293 294 295 296 297 298 299 300 301 302 303 304 305 306 307 308 309 310 311 312 313 314 315 316 317 318 319 320 321 322 323 324 325 326 327 328 329 330 331 332 333 334 335 336 337 338 339 340 341 342 343 344 345 346 347 348 349 350 351 352 353 354 355 356 357 358 359 360 361 362 363 364 365 366 367 368 369 370 371 372 373 374 375 376 377 378 379 380 381 382 383 384 385 386 387 388 389 390 391 392 393 394 395 396 397 398 399 400 401 402 403 404 405 406 407 408 409 410 411 412 413 414 415 416 417 418 419 420 421 422 423 424 425 426 427 428 429 430 431 432 433 434 435 436 437 438 439 440 441 442 443 444 445 446 447 448 449 450 451 452 453 454 455 456 457 458 459 460 461 462 463 464 465 466 467 468 469 470 471 472 473 474 475 476 477 478 479 480 481 482 483 484 485 486 487 488 489 490 491 492 493 494 495 496 497 498 499 500 501 502 503 504 505 506 507 508 509 510 511 512 513 514 515 516 517 518 519 520 521 522 523 524 525 526 527 528 529 530 531 532 533 534 535 536 537 538 539 540 541 542 543 544 545 546 547 548 549 550 551 552 553 554 555 556 557 558 559 560 561 562 563 564 565 566 567 568 569 570 571 572 573 574 575 576 577 578 579 580 581 582 583 584 585 586 587 588 589 590 591 592 593 594 595 596 597 598 599 600
---	--	---	--

PLANTER LIGHTING NOTE:
FACADE LIGHTING SHALL BE CONNECTED TO THE PROGRAMMABLE LOBBY LIGHTING CONTROL SYSTEM. THE SYSTEM SHALL INCLUDE A PHOTO SENSOR TO AUTOMATICALLY TURN ON LIGHTING IN THE ABSENCE OF DAYLIGHT AND TURN OFF THE LIGHTING WHEN SUFFICIENT DAYLIGHT IS AVAILABLE. LIGHTING CONTROL SYSTEM SHALL ALSO HAVE AN ASTRONOMIC TIME CLOCK IN ORDER TO AUTOMATICALLY REDUCE THE CONNECTED EXTERIOR LIGHTING POWER BY AT LEAST 30 PERCENT FROM 12 MIDNIGHT UNTIL 6AM.

ARCHITECT



68 WHITEHALL ST. LYNBROOK, NY 11563
(516) 256-0317
www.ggastudios.com
© GOLDEN GLOW ARCHITECTURAL STUDIOS, DPC 2020



DATE: 08/19/2021
CHECKED BY: LAS
DRAWN BY: SL
SCALE: AS NOTED
DWG NUMBER: X-106.00
PAGE NO: 07 OF 07