

East Midtown Greenway and Andrew Haswell Green Park 2B 53rd – 62nd Street

Presentation to CB8 Parks & Waterfront Committee and 197-A Committee

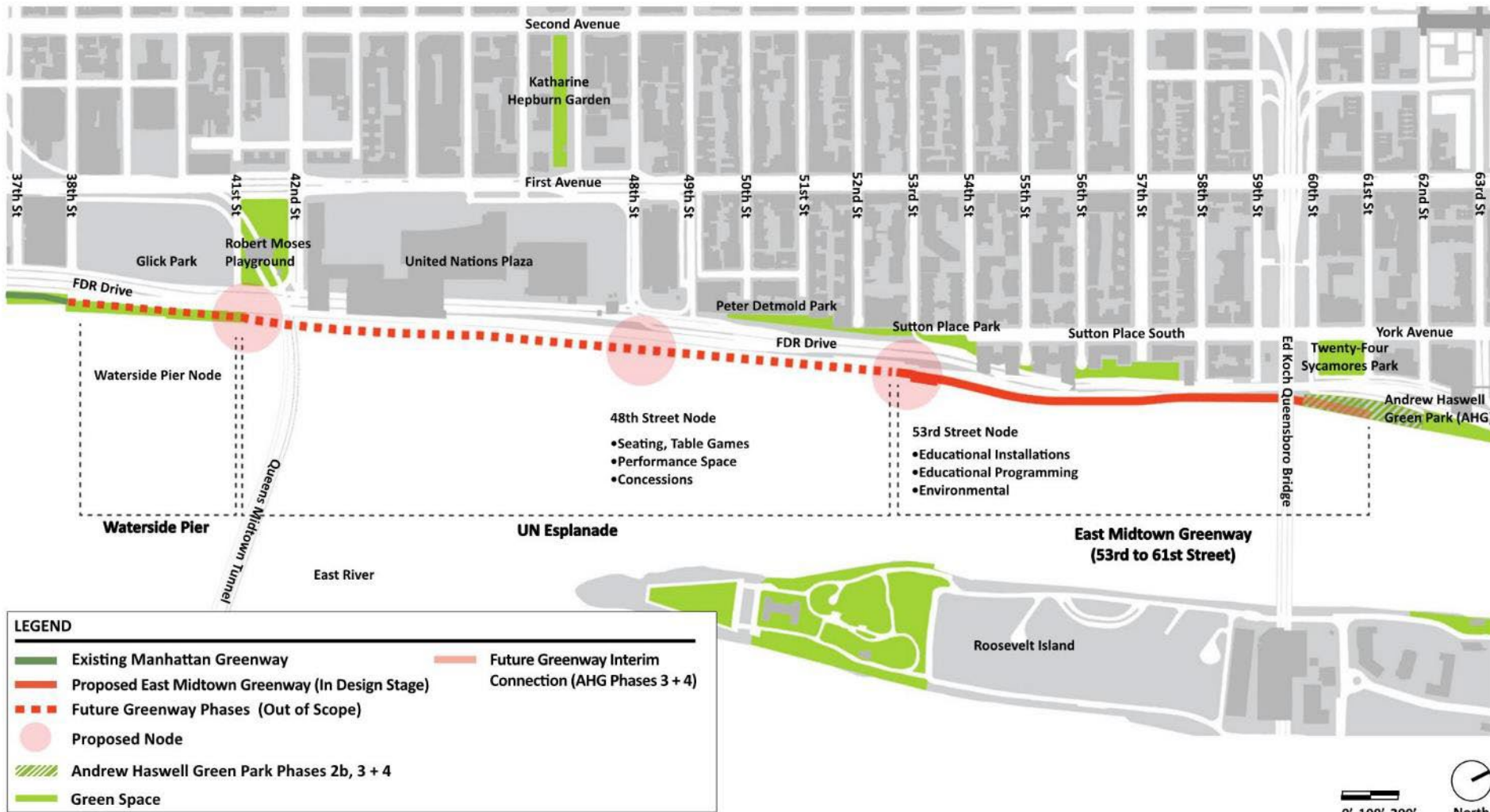
March 10th, 2022

NYC / EDC



NYC Parks

East Midtown Waterfront Esplanade



EMG and Andrew Haswell Green Park 2B



Sutton Place
Park



REVISION A3. Addition of paved accessible walkway across lower lawn

REVISION A4. Coordination with East Midtown Greenway Design Elements

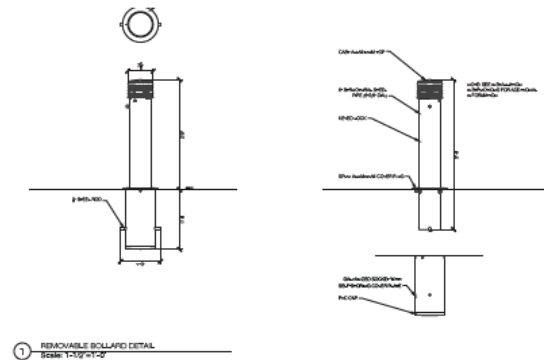
REVISION A3 & A4

- Reconstruction of the existing platform
- Rehabilitation of the East 60th Street overpass
- Landscaping, railing, lighting, pavement and seating

Rendering of AHG2B Entrance at 60th St & York Ave



Securing York Ave Entry



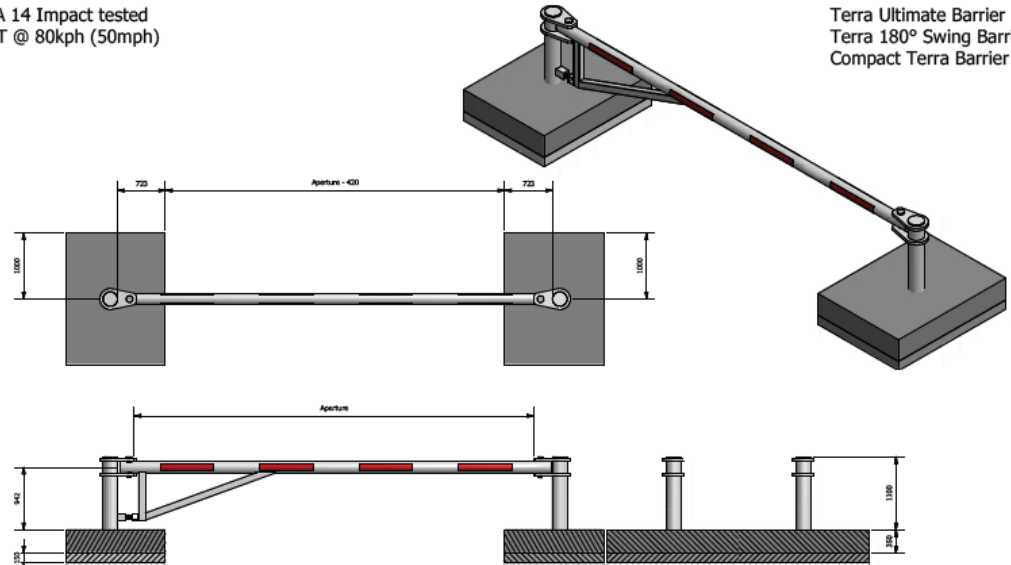
Previously approved removable bollards

Terra Ultimate 180 Swing Barrier

IWA 14 Impact tested
7.2T @ 80kph (50mph)

Also see:

Terra Ultimate Barrier
Terra 180° Swing Barrier
Compact Terra Barrier



Impact Rated Security Gate
Terra Ultimate 180 Swing Barrier
Impact rated 7.2t @ 50mph/80kph
Steel, galvanised finish dark charcoal

Impact Rated Bollard

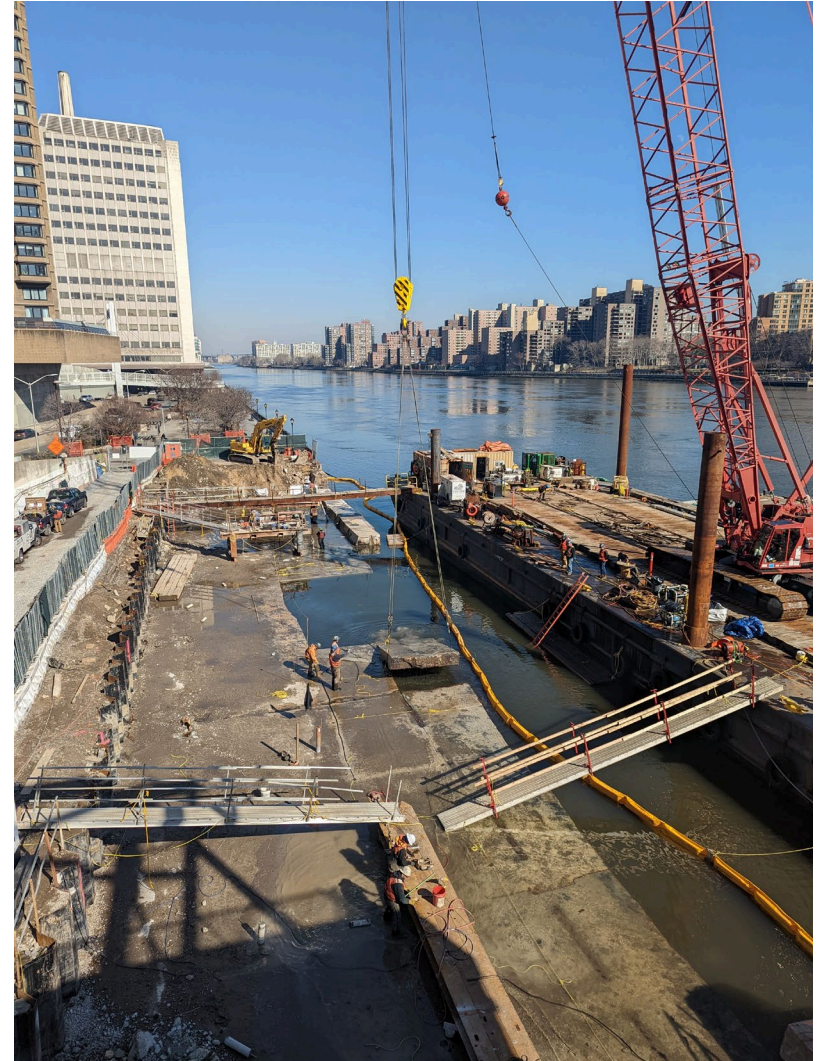
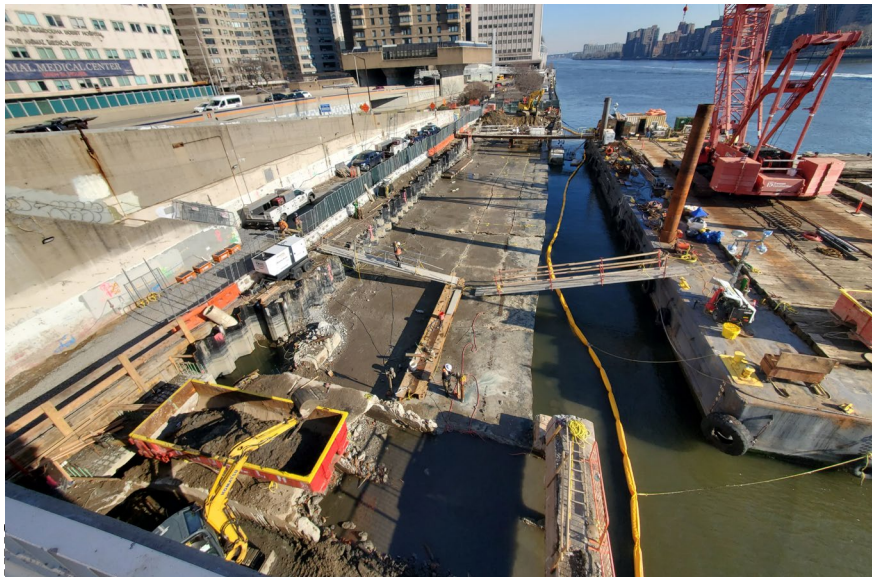
REVISION A1.
Revision to bollards at bottom
of ramp near York Ave

REVISION A1
Securing York Ave Entry

Rendering of AHG2B looking South

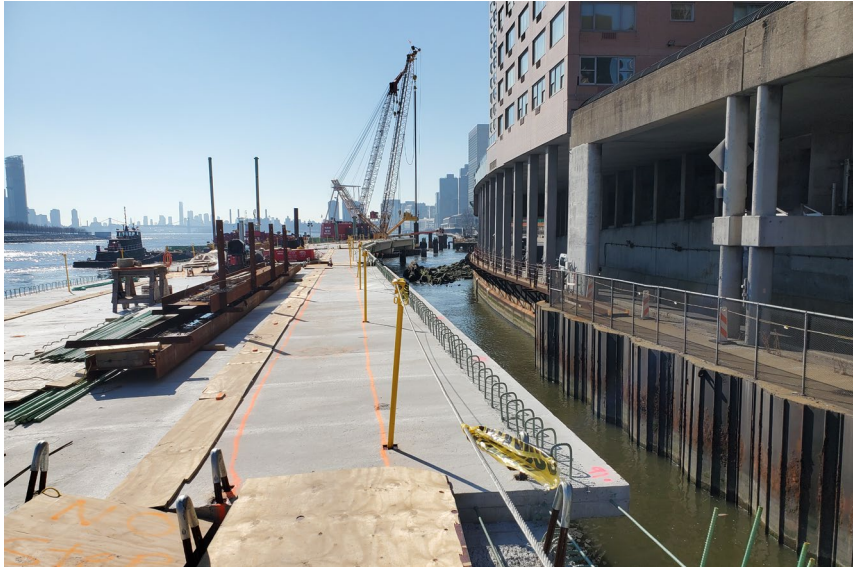


Construction Progress: AHG2B



Platform removal

Construction Progress: East Midtown Greenway



Construction Progress: Transition Area



Rendering of Transition Area



Schedule



- EMG Area 1: topside construction underway
- EMG Areas 2 & 3: caisson work complete, pile cap and tub girder installation ongoing
- Clara Coffey Park: partial re-open in Fall 2021
- 54th Bridge: set in place
- 60th Street Ramp: critical repairs complete
- AHG2B Marine Construction: platform removal underway
- AHG2B Civil Work: July 2022 – July 2023
- Greenway and AHG 2B completion: Fall 2023

Questions / Comments

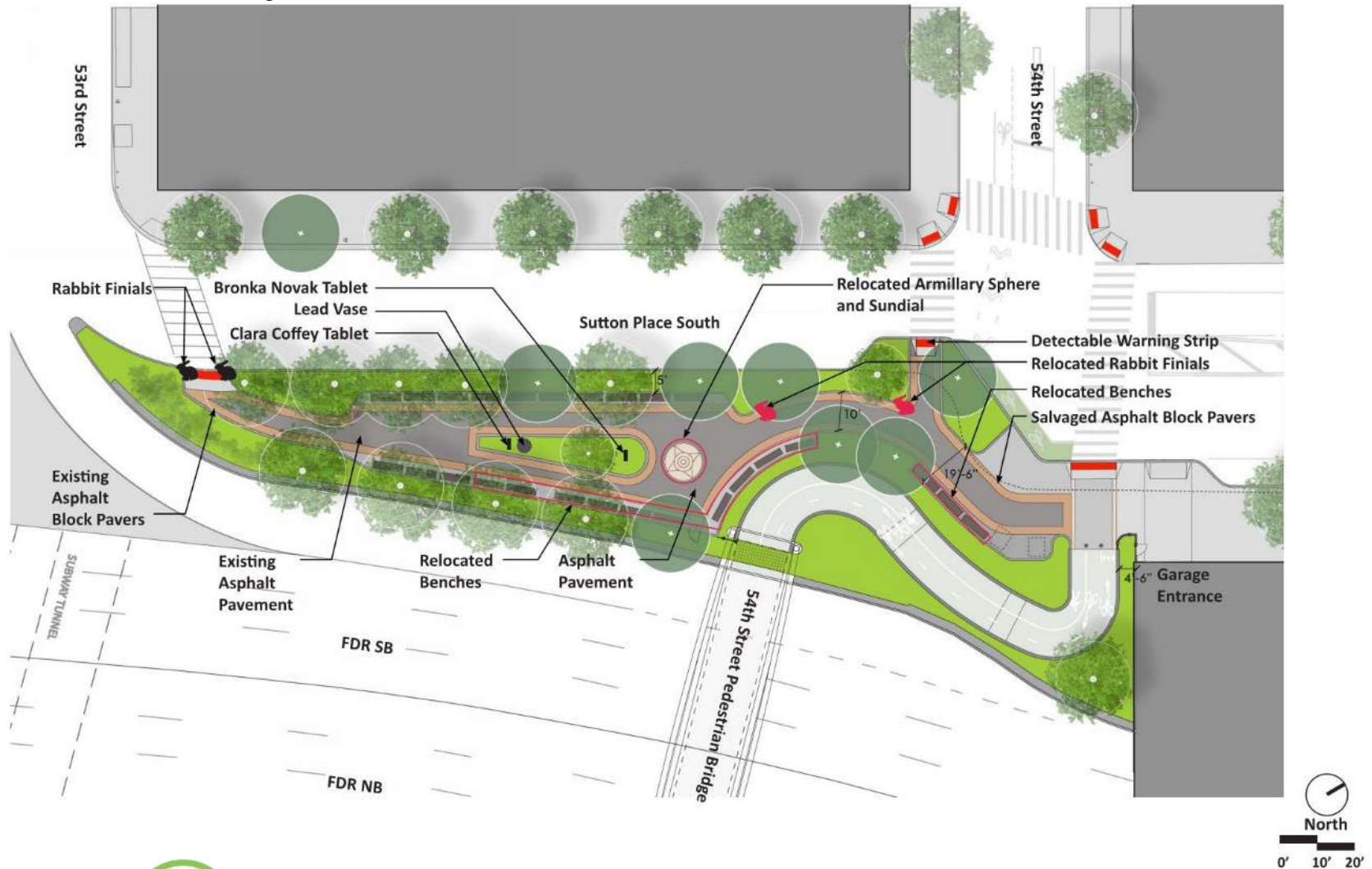


Appendix



NYC Parks

Clara Coffey Park



Clara Coffey Park



Rendering of 54th St. Pedestrian Bridge



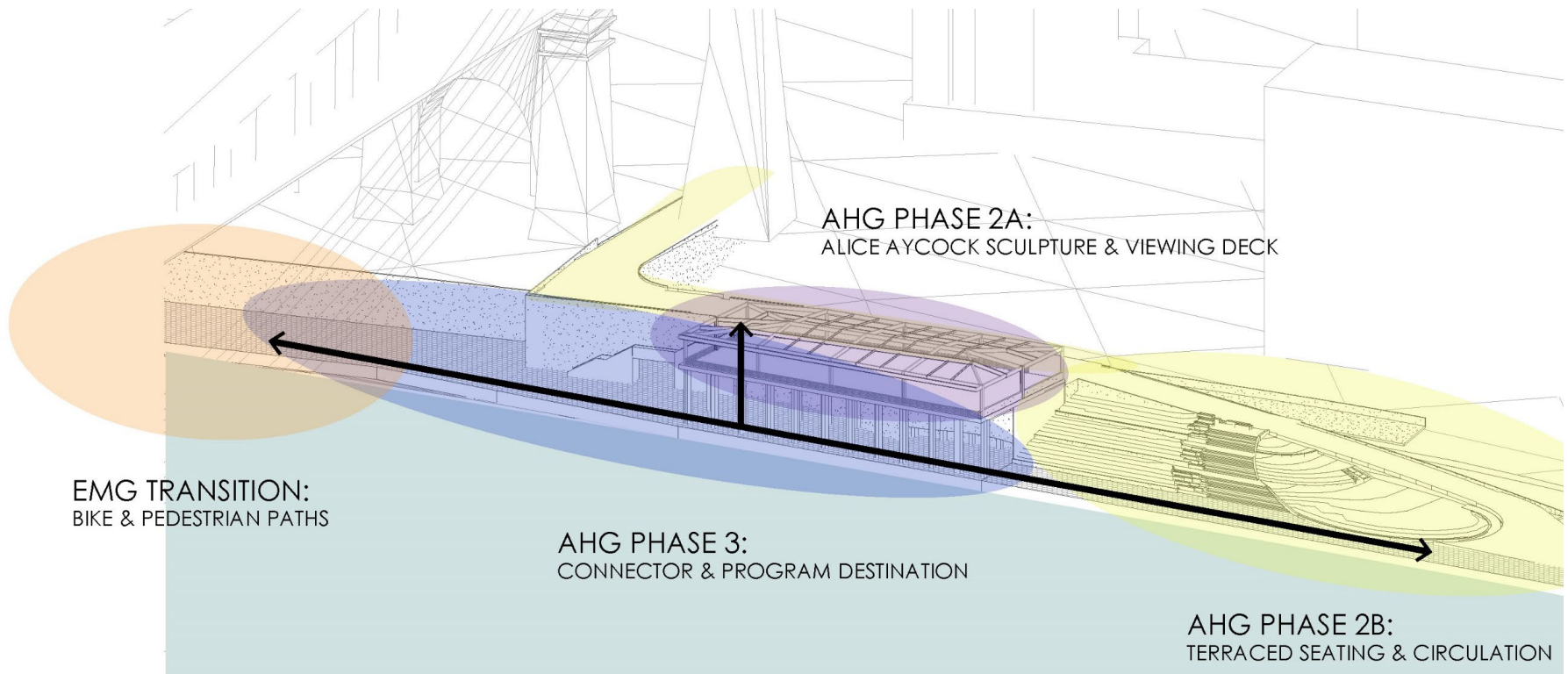
Rendering of esplanade



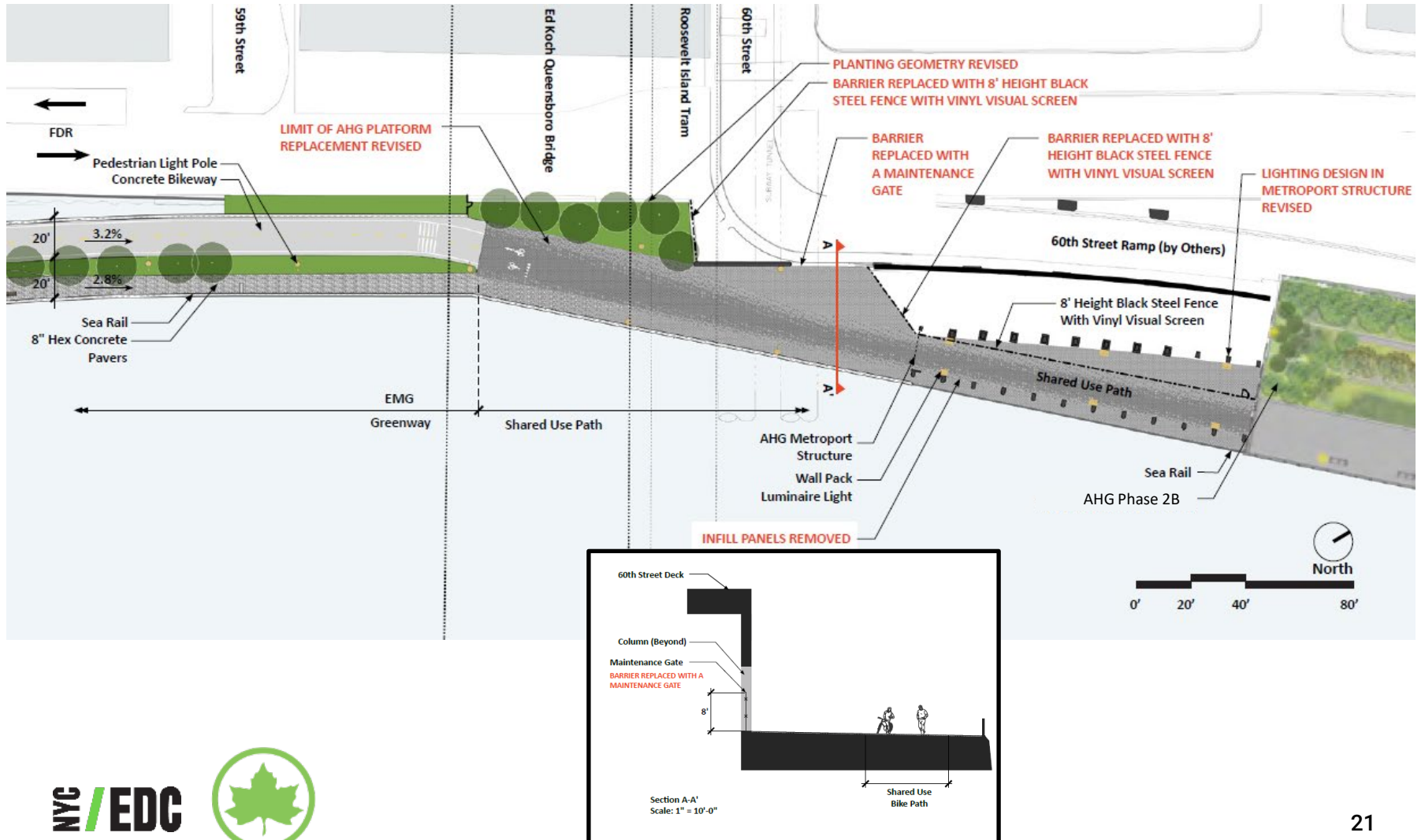
Andrew Haswell Green Park

3 Phases:

- AHG 2A – Construction Complete
- AHG 2B – In Construction
- AHG 3 – Unfunded



Transition Area Enlargement Plan



Existing Photos under Alice Ayccock Pavilion

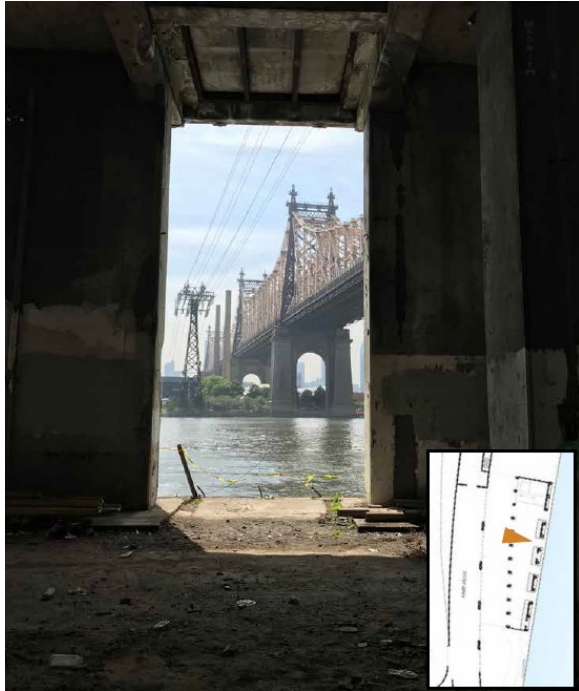


View looking North



View looking West
to FDR

Existing Photos under Alice Ayccock Pavilion



View looking East

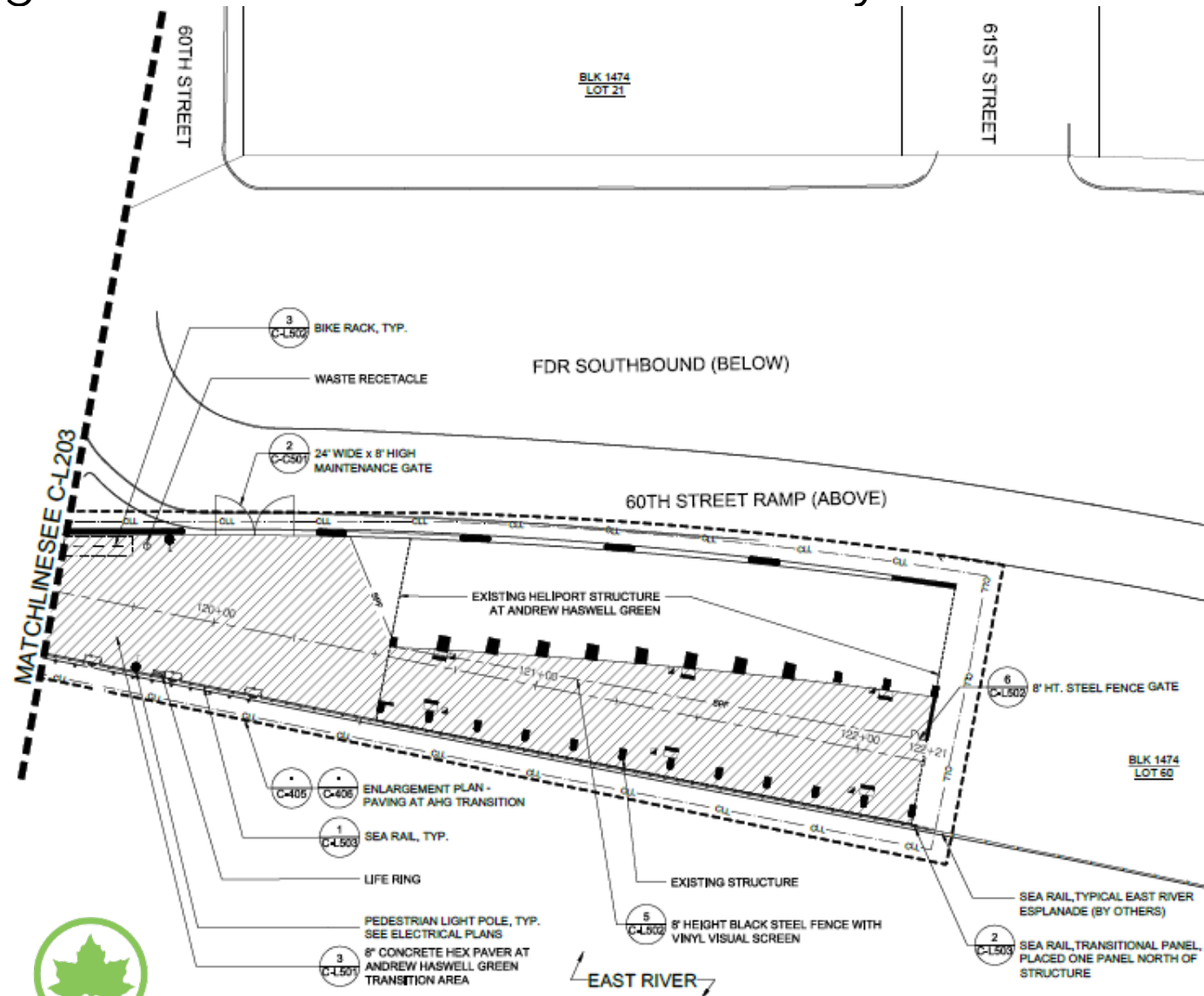


View looking East



View looking North,
along East River

Enlargement Plan under the Alice Ayccock Pavilion



Alice Aycock Pavilion

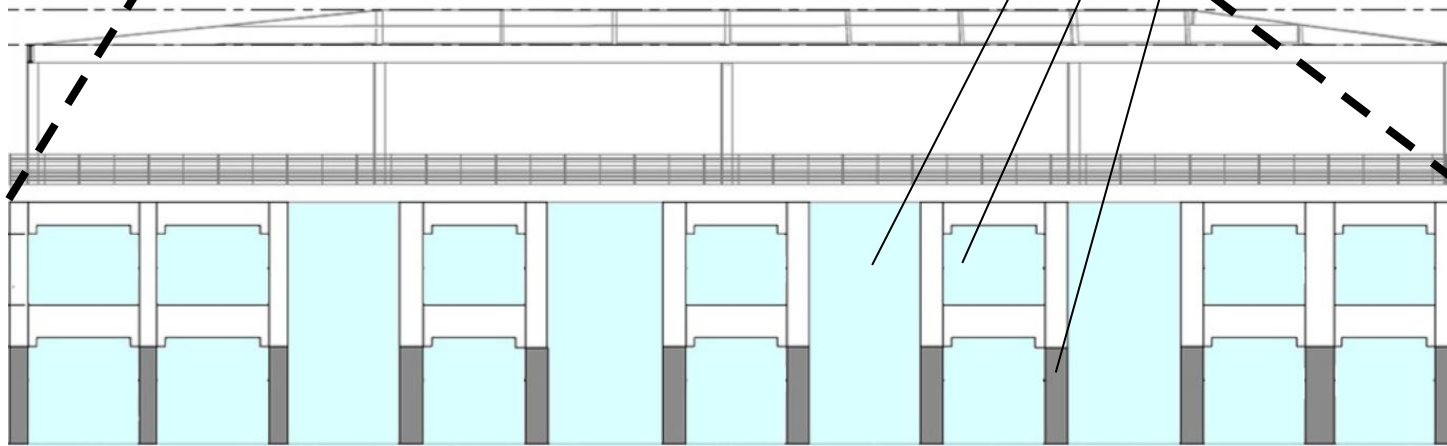


Existing Photo

Existing full-height openings

New half-height openings

New paint at lower half of structure



Proposed East Elevation

Area under Alice Aycock Pavilion

- Over 27' tall
- New openings on North and South walls are approx. 17' & 18' wide
- New openings on East wall are 13' wide
- 8' tall black steel fencing separates esplanade from interim Parks maintenance area
- 6 new wall-mounted lights
- Shared use path is 17' wide

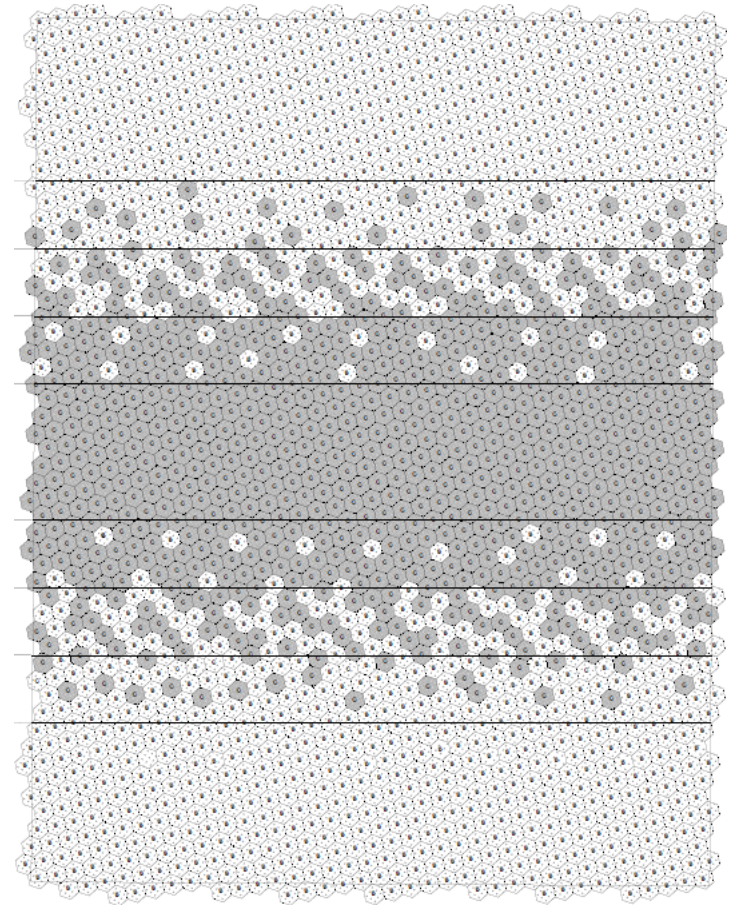
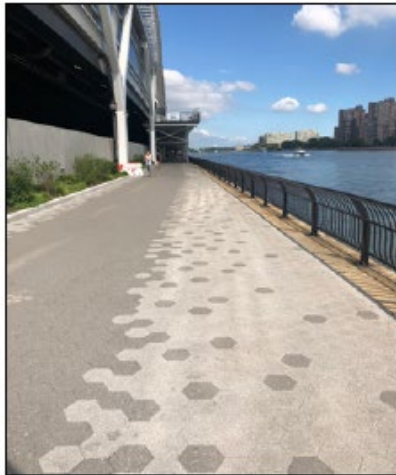


Diagram of paving at shared use path

Transition Area: Materials and Fixtures



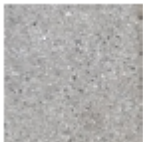
8" Hexagon Concrete Pavers
Color: Medium Gray, Dark Gray



8' Height Black Steel Fence with Vinyl Visual Screen
Material: Steel
Color: Black



Valet LED Tunnel Luminaire
Finish: TGIC Polyester Powder Coat Paint



Tectura Designs, 8" Hexagon Concrete Pavers, UF-35



Tectura Designs, 8" Hexagon Concrete Pavers, UF-60



Paint for Columns

Typical in-water construction equipment



Barge mounted drill rig

