

Russell Squire
Chair

Will Brightbill
District Manager



505 Park Avenue, Suite 620
New York, N.Y. 10022-1106
(212) 758-4340
(212) 758-4616 (Fax)
www.cb8m.com – Website
info@cb8m.com – E-Mail

**The City of New York
Community Board 8 Manhattan
Parks and Waterfront Committee
Joint with 197a Committee**

Via Zoom with Will Brightbill, District Manager Hosting
March 10, 2022

Community Board Members Present: Felice Farber, Sharon Pope-Marshall, Rita Popper, Barbara Rudder, Barry Schneider

Community Board Public Members Present: Judy Schneider, Irma Torres

Community Board Member Excused: Lowell Barton

NOTE: Relevant *information received after the meeting is included here in italic & bold*

MINUTES

- Presentation on the East Midtown Greenway (EMG) and Andrew Haswell Green Park (AHG)—Phase IIB by Yvi McEvilly and Katherine Prybylski of EDC and Michael Bradley of Parks Department** -- Yvi gave a review and update of the EMG and AHG Park - Phase IIB, which runs from E. 53 to E. 62 Streets. The following is on AHG Phase IIB is one acre of open space:
 - **RAMP:** Reinforcement of the 60th Street Ramp has been completed. The final surface design will not be done until the end of the project. At that time only one side of the ramp will be worked on at a time, always providing access to the public. Then they will switch and do the other side. CB8 requested that parks maintain additional colored paint to keep the ramp in good condition for the future. *We were subsequently told all the paint colors are standard NYC colors at various city agencies.*
 - **YORK AVE./E. 60 ST. ENTRANCE:** There was a design revision, which removed the bollards at York Ave. & 60 Street entrance and calls for the installation of a swing gate across the entrance, the same as Carl Schurz Park and other city parks. This will stop any unplanned vehicles from entering. Only the Parks, DOT, Fire, and 1st Responders will have access. There will be two 4-foot pedestrian entrances next to the gate.
 - **OTHER REVISIONS IN BLUE** in the illustration: The handicap ramp starting at the waterfront level will now go further up the lawn and then makes a left turn to go toward the water. Also, the dark paving for the bikes and the light paving for the walkers will now be extended past the inside of the former sanitation building. See picture below.

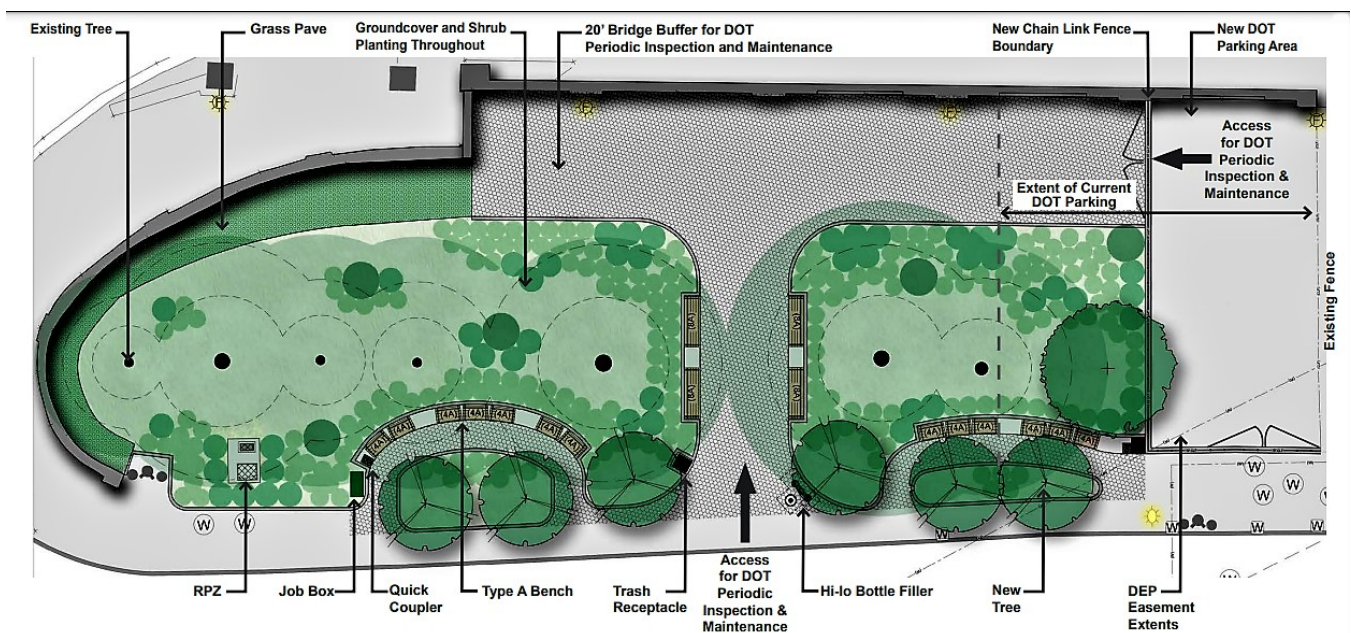


- **BALANCE OF WORK:** Topside construction is underway with the caisson and pile caps ongoing and in the process of installing the new platform. The topside work and landscaping will start this summer and anticipated completion is Fall 2023.
- **UPDATE:** EDC & PARKS will come back for an update in 3 to 4 months, if not sooner.
- **Q&A:**
 - Most of the discussion concerned the Water Connection for the entire AHG Park that has already been built. The original contractor for Phase IIA & the Pavilion never put in the water connection, which was part of their contract. There is a Reduced Pressure Zone (RPZ) valve that is currently located where the new lawn will be and it must be moved to the inside of the former sanitation building, under the Pavilion. ***This is a complicated issue and the new RPZ valve to be installed will need to be very large, as it must supply the area from E. 53 to E. 62 Streets. EDC and Parks will have a separate meeting to discuss this issue and they will get back to us—It will not be the regular Wednesday (3/16) meeting of EDC and Parks.*** It is understood the current EDC contractor is going to help resolve the issue.
 - Signage was supposed to be installed on the Tramway stanchion/tower over the 60th Street entrance to the park last summer. EDC has been in talks with RIOC and now is finally ready to start fabrication. Signage should start installation in July 2022.

2. Parks Department update by Shena Kaufman, District Manager, NYC Parks & Recreation along with Q&A

- **Ruppert Park:** There will now be 4 additional swings for a total of 9. Two trees had to be removed to accommodate the additional swings. The rodent mitigation question was raised and Sheena said that Parks had a new Carbon Dioxide Machine that will be used 2 times a month. Once the Construction Crew starts, they will have their own exterminators. Construction should be starting this fall—date to be confirmed.

- Tramway Park is open, and the fencing is down. The rock garden at the E. 60 Street side of the park has been removed and paved with matching pavers to allow for better circulation in the area in front of the Tram steps. ***They are working on a planting program.*** Lastly, all the restitution trees for the two removed from the park - due to the 2 new elevators – will be planted in the E. 60's.
- Questions raised about the E. 81 Street Bridge where the plexiglass needs a thorough cleaning—Shena was happy to report the work was done today.
- The following question was brought up for the second time and EDC/Parks has given this reply: ***The connection between the 60th St. ramp at AHG2A and the Queensboro Bridge abutment and the end of E. 59th St.: NYC Parks has investigated the possibility of a connection and deemed it infeasible. The reasons are: There is about an 8 ft. to 9 ft difference in elevation between the ramp and the terrace area, which would require a long ramp for a connection; The terrace area is gated private/ConEd property and occupied by ConEd storage container. Therefore, due to the reasons above, a connection would need to ramp over the SB FDR to 59th Street proper, one block. The only way to support a ramp would be via cantilever off the wall above the FDR, which has an unknown structural capacity, or somehow to hang it from the bridge above.***
- Honey Locust Park 15% complete should be finished by next January. See drawing below.



- Carl Schurz Park dog run had a broken pipe, which has been replaced. And the run is open
- Question was raised about water for the dog run at AHG. There will be a meeting the week of March 14 with the green gardeners, and this will be covered.

The meeting was adjourned.

Felice Farber and Barry Schneider,
Co-Chairs, Parks and Waterfront Committee