

Hospital for Special Surgery: Esplanade - 72nd St. to 78th St.

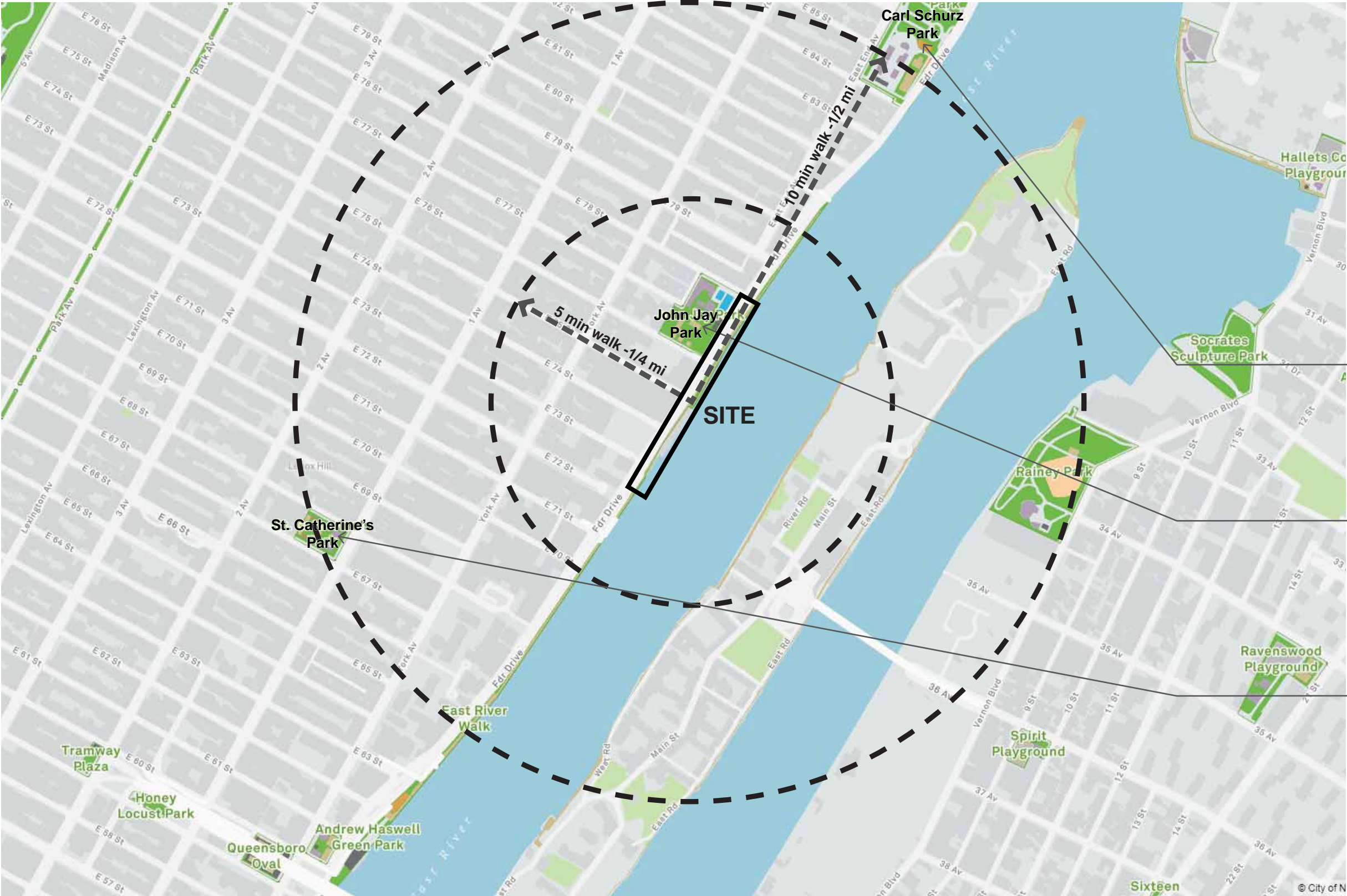
Schematic Design Presentation

November, 2021



Quennell Rothschild & Partners

Landscape Architects | Urban Designers | Planners



Summary of Parks Resources within 1/2 mile

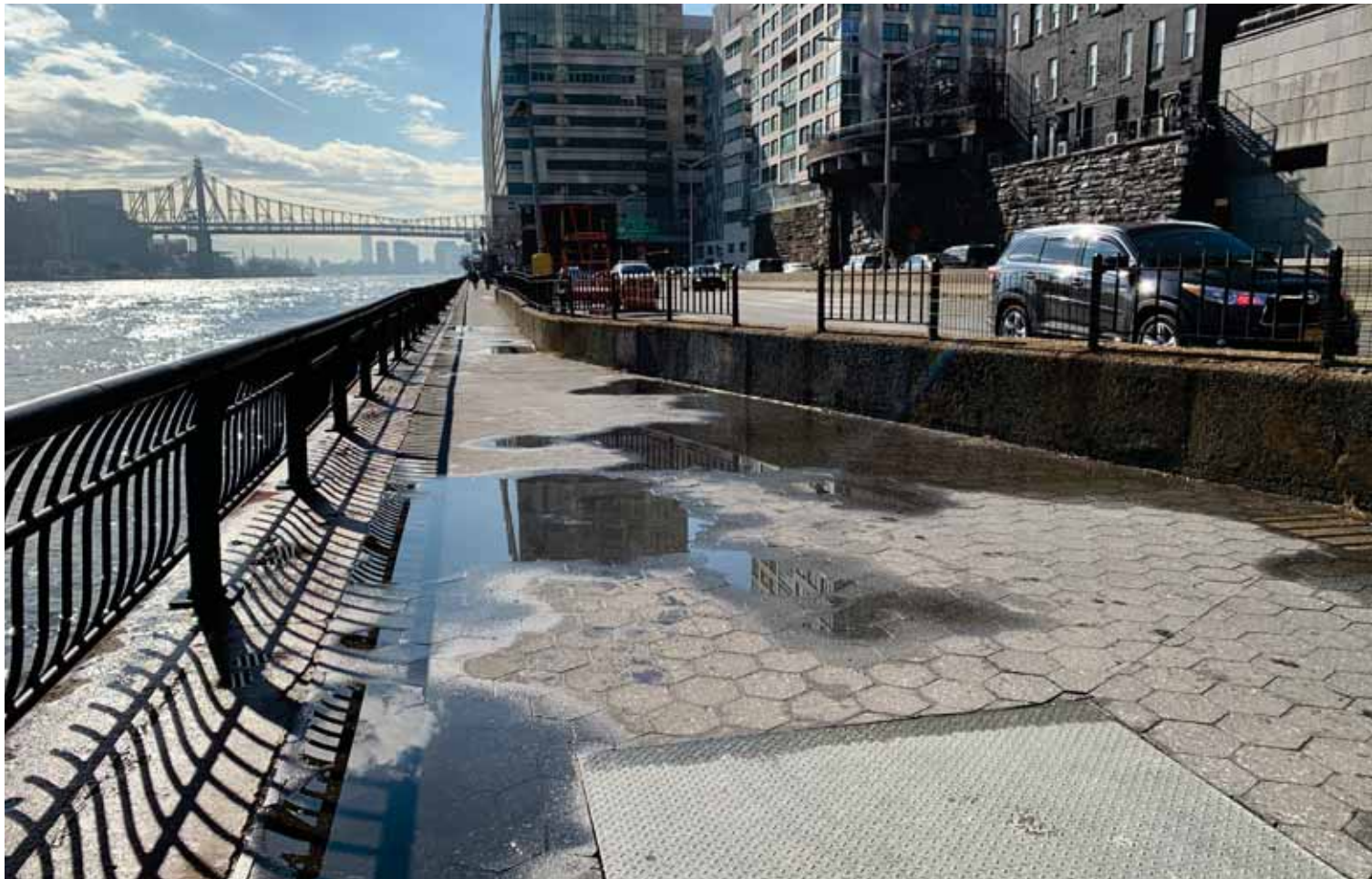
- Basketball (6)
- Handball (8)
- Soccer Field
- Asphalt Field
- Roller Hockey
- Running Track
- Outdoor Pool
- Fitness Equipment (2)
- Playground (3)
- Spray Shower (2)
- Dog Run
- Comfort station (3)

Carl Schurz Park
Basketball
Asphalt Field
Roller Hockey
Playground
Dog Run
Comfort Station

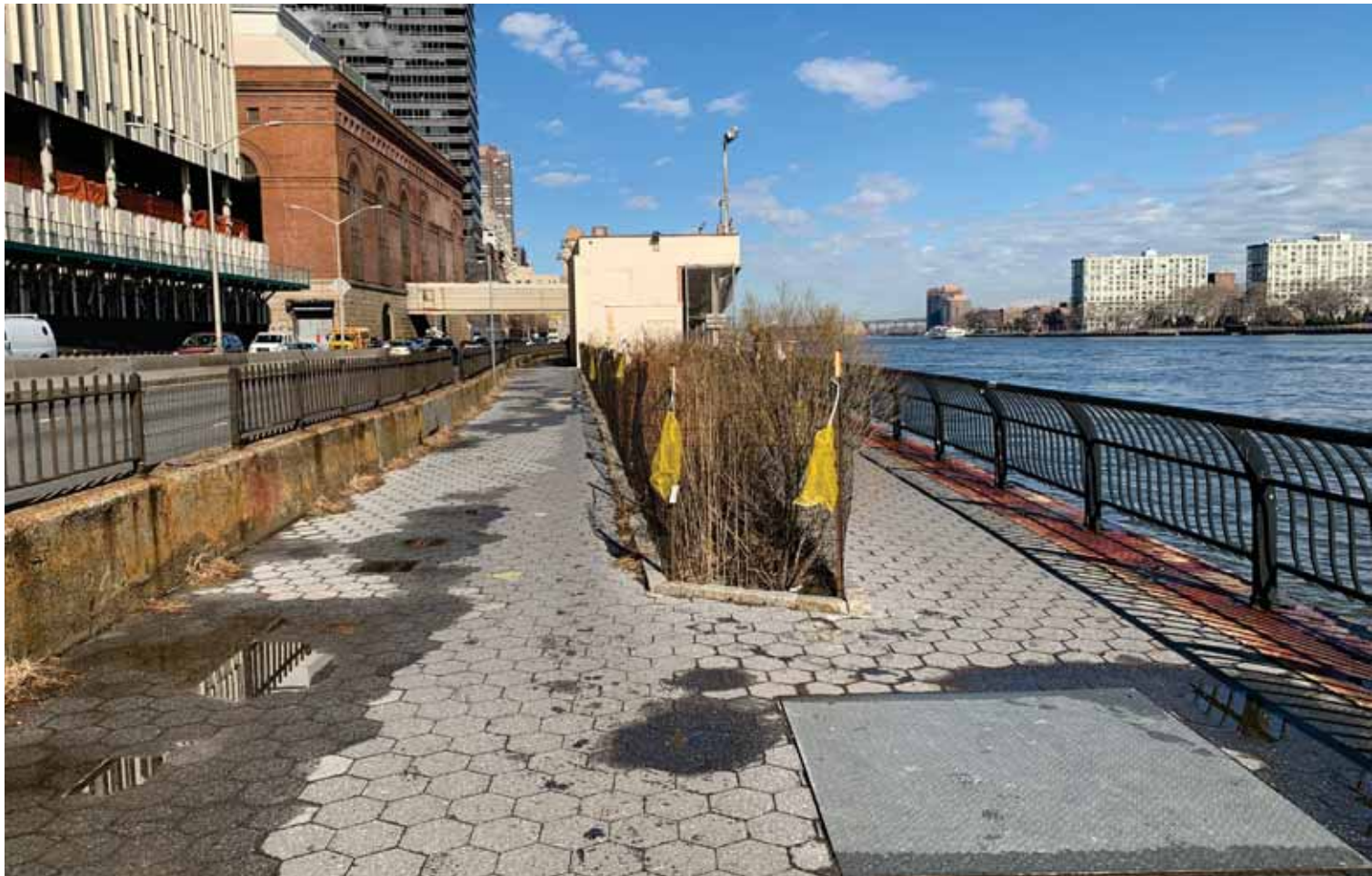
John Jay Park
Basketball (3)
Handball (6)
Fitness Equipment
Outdoor Pool
Playground
Spray Shower
Comfort Station

St. Catherine's Park
Basketball (2)
Handball (2)
Fitness Equipment
Playground
Spray Shower
Soccer Field
Running Track
Comfort Station





1. Narrow path at Esplanade looking south



2. Existing planting bed south of ConEd building



Key Plan

N
NTS



Landscape Architects | Urban Designers | Planners

East River Esplanade Existing Photos



3. Narrow path between FDR Drive and ConEd building



4. Vehicular entrance and overhead bridge at ConEd building



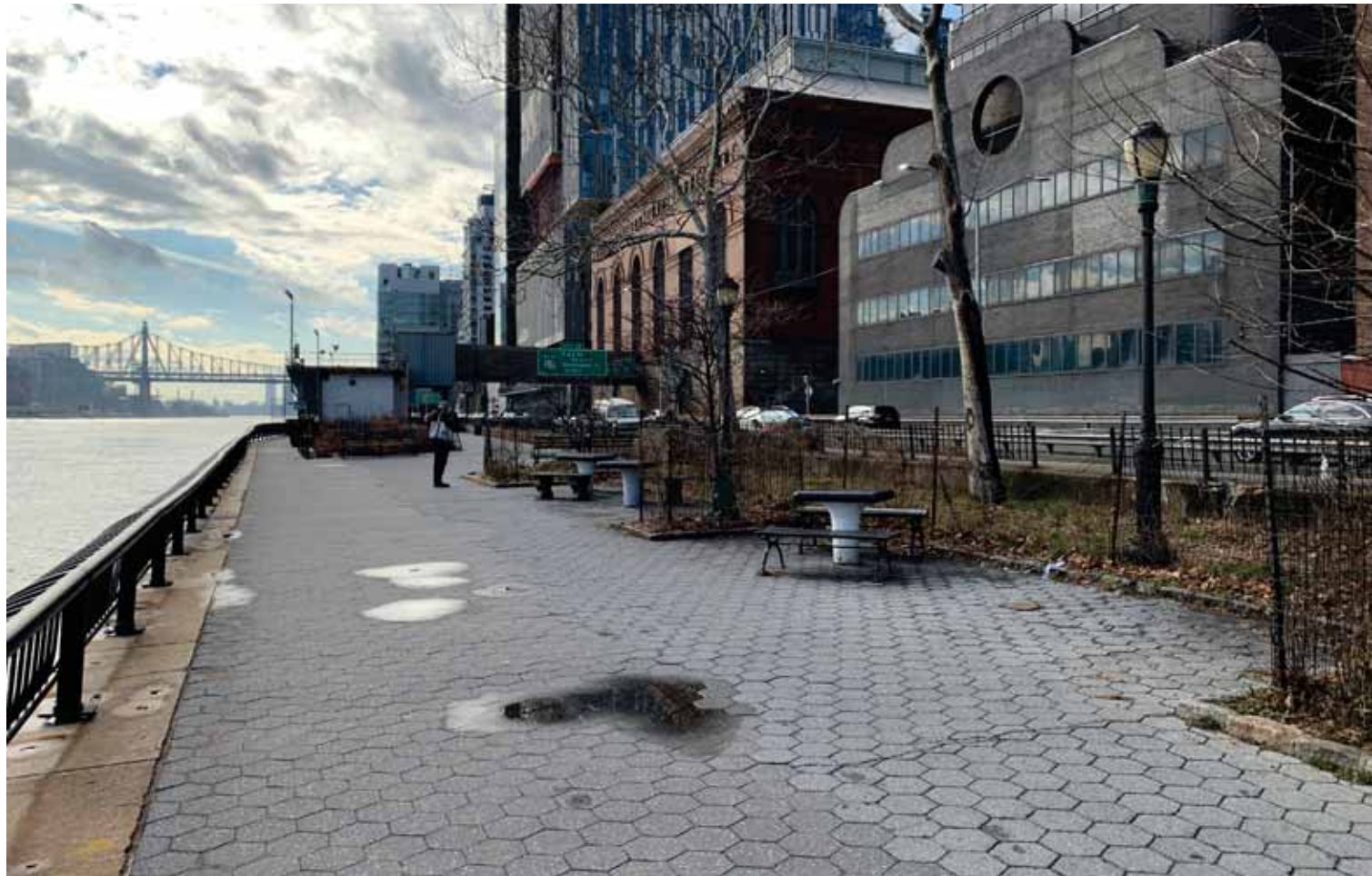
Key Plan

N
NTS



Landscape Architects | Urban Designers | Planners

East River Esplanade Existing Photos



5. Existing planting and seating area at Esplanade



6. View of Esplanade looking north



Key Plan

N
NTS



Landscape Architects | Urban Designers | Planners

East River Esplanade

Existing Photos



7. 78th Street pedestrian bridge entrance on Esplanade



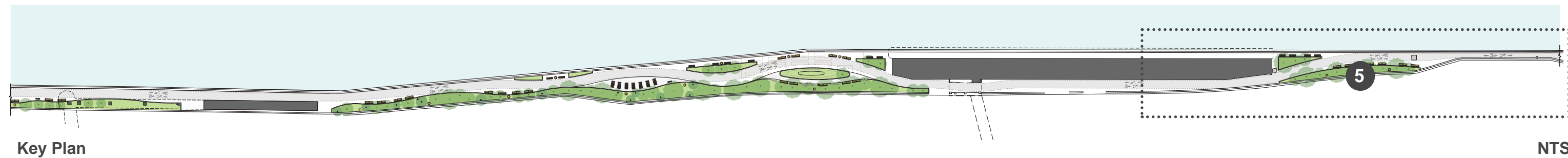
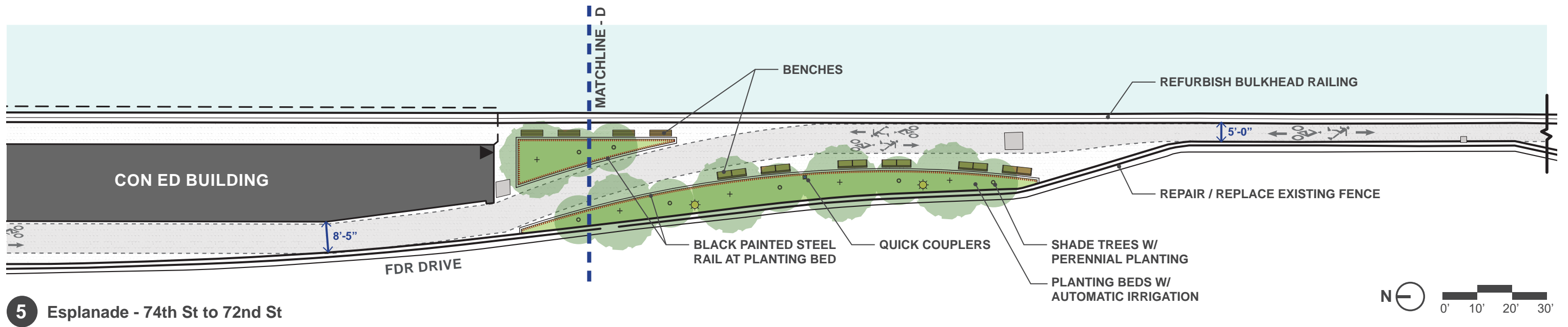
8. Esplanade view under the pedestrian bridge

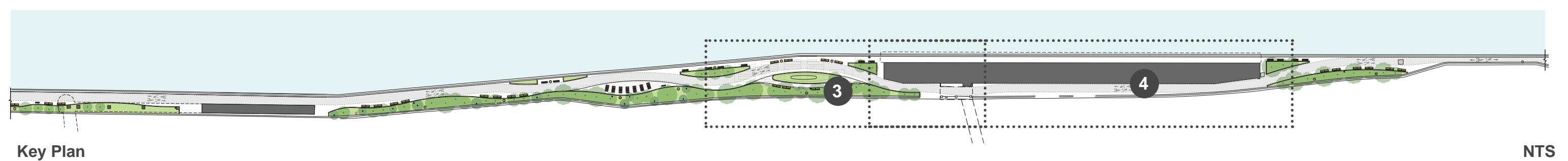
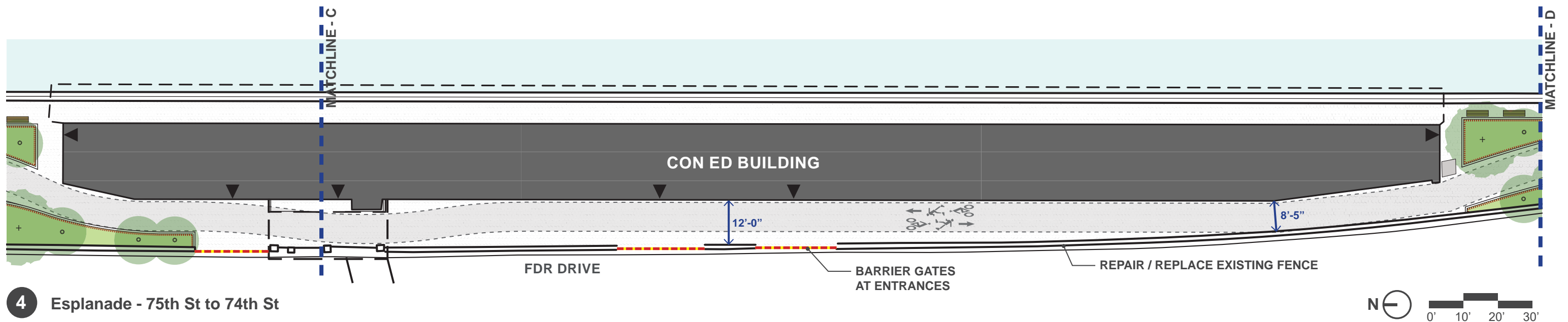
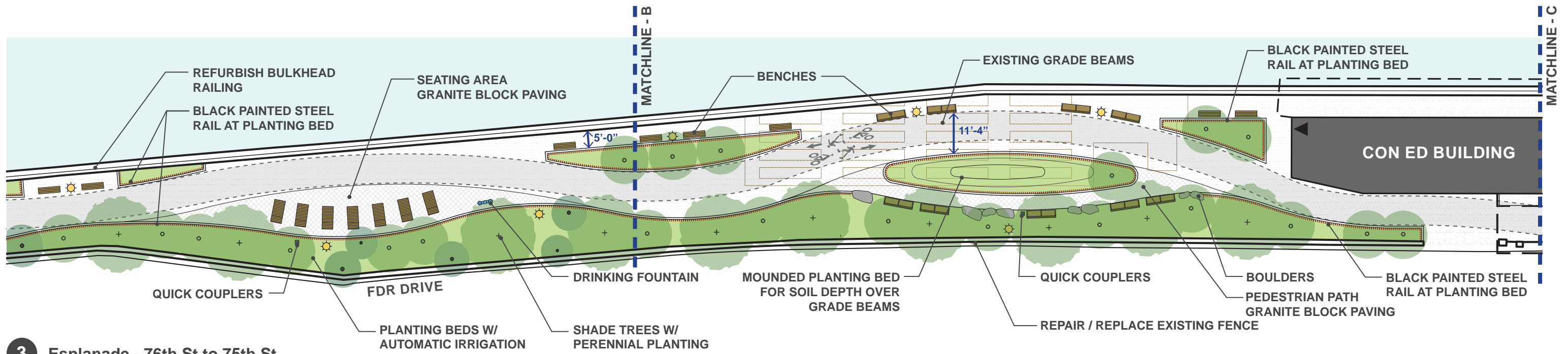


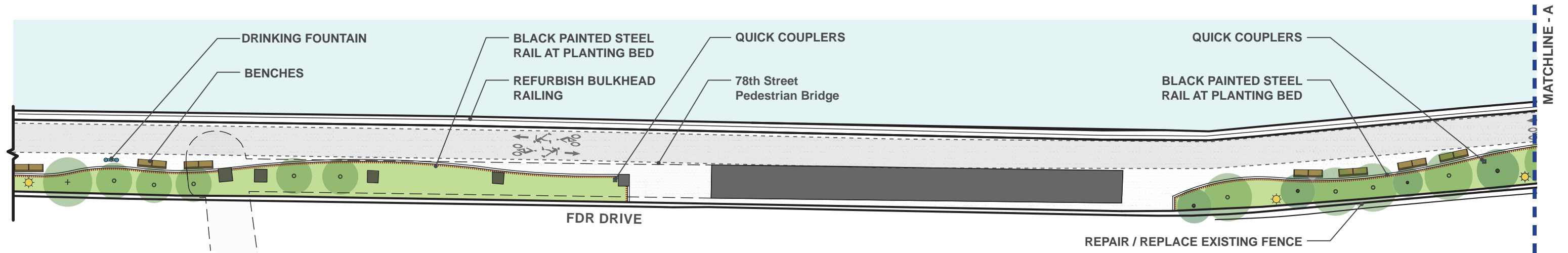
Key Plan

N
NTS

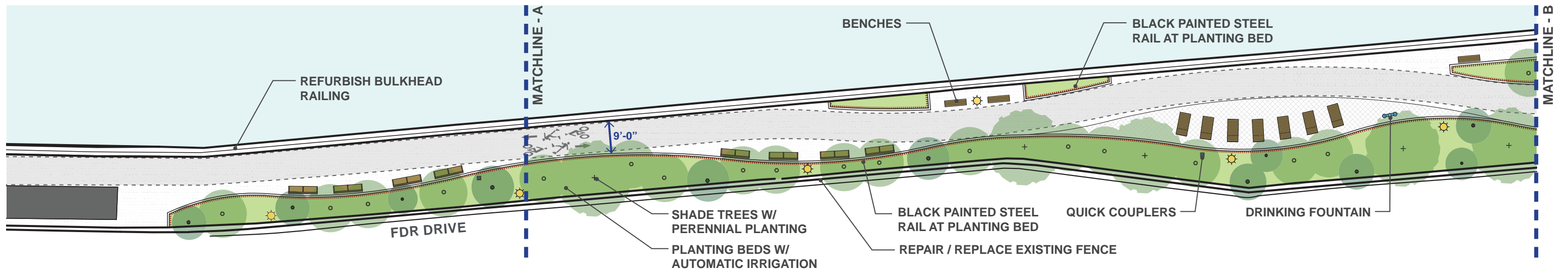




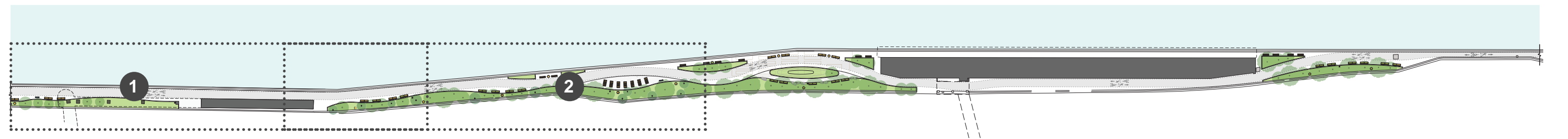




1 Esplanade - 78th St to 77th St



2 Esplanade - 77th St to 76th St



Key Plan

NTS



Type B pole & fixture



Lounge chairs (slats to be done in RPL)



Concrete tables and 1964 World's Fair Benches (slats to be done in RPL)



1964 World's Fair Bench with armrests (slats to be done in RPL)



1964 World's Fair Bench Backless (slats to be done in RPL)



Asphalt hex block paving



ADA Granite block paving at seating area and pedestrian pathway



Black painted steel fence at planting beds



Existing bulkhead - Bow railing (refurbished)



TREES



Gleditsia triacanthos
Honeylocust



Quercus bicolor
Swamp White Oak



Quercus rubra
Red Oak



Betula populifolia
Grey Birch



Amelanchier canadensis
Serviceberry

SHRUBS



Ilex crenata
Japanese Holly



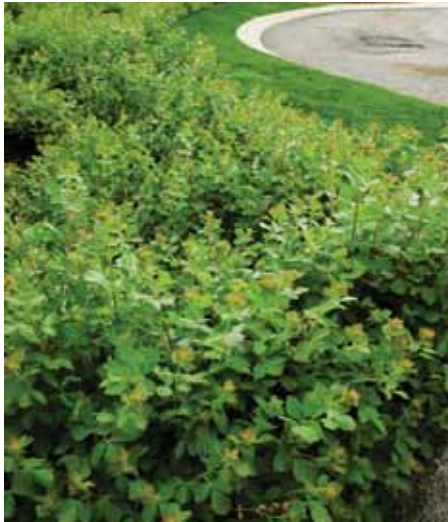
Ilex glabra
Inkberry



Prunus laurocerasus
Cherry Laurel



Cornus sericea
Red Twig Dogwood



Rhus aromatica
Fragrant Sumac



GRASSES



Pennisetum alopecuroides
Fountain Grass



Calamagrostis x acutiflora
Feather Reed Grass



Panicum virgatum
Switchgrass



Schizachyrium scoparium
Little Bluestem

PERENNIALS



Rudbeckia hirta
Black Eyed Susan



Perovskia atriplicifolia
Russian Sage



Echinacea purpurea
Purple Coneflower



Eutrochium maculatum
Joe-Pye-Weed



