



HSS Kellen Tower

Community Board #8

Parks and Waterfront & Transportation

Joint Committee Meeting

November 4, 2021



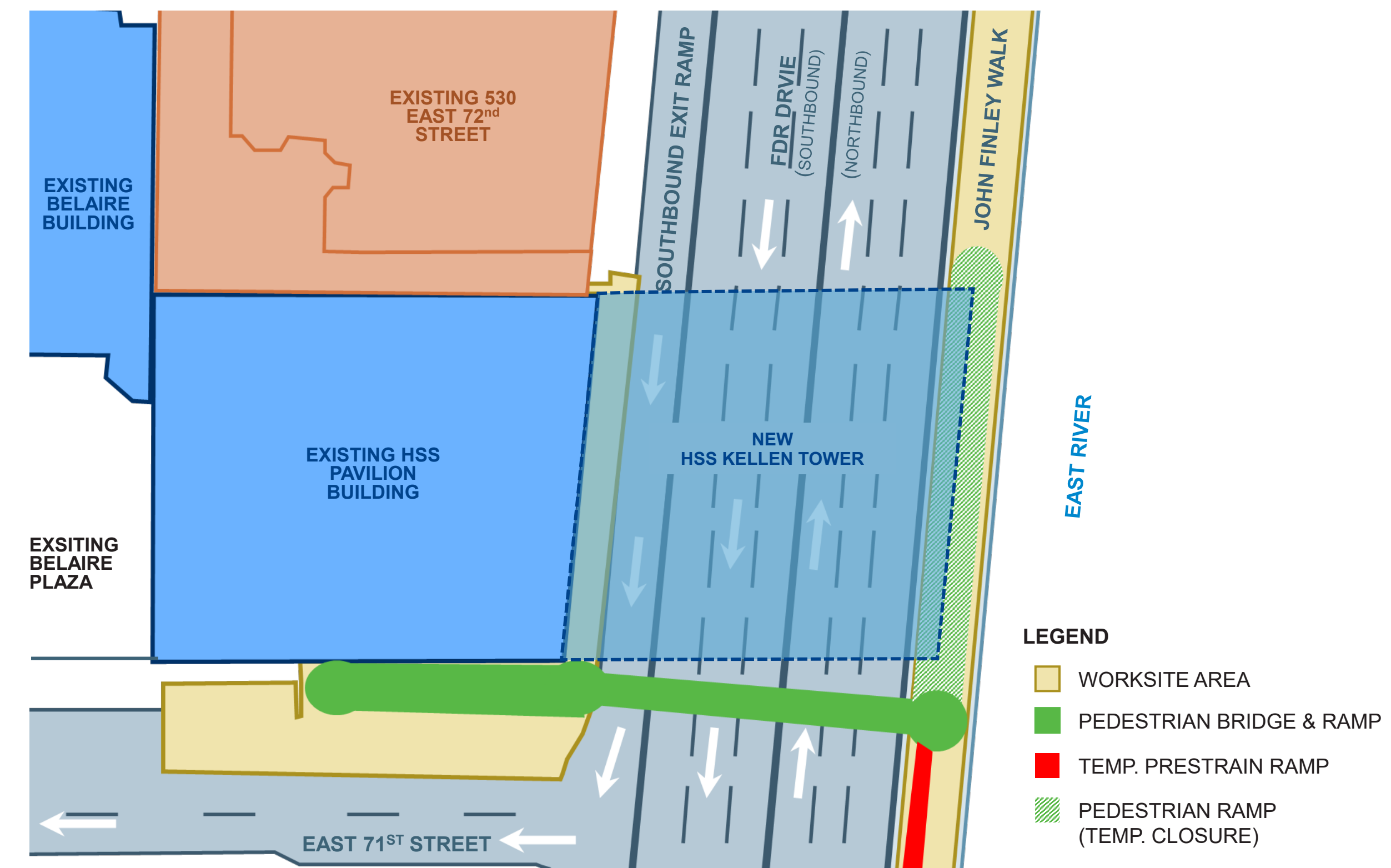
Site Logistics Overview for HSS Kellen Tower Building

HSS

Roadway and Traffic Planning

- Construction requires Exit 13 East 71st Street Southbound Exit closure and Northbound Lane closures during off-hours and weekends for site mobilization, excavations, and foundations on both the East and West sides of the FDR Drive
- The north lane of East 71st Street in front of the HSS Pavilion and Belaire buildings will be closed for storage area and future hoist complex throughout the project

Daytime Site Safety and Logistics for Excavation and Roadwork

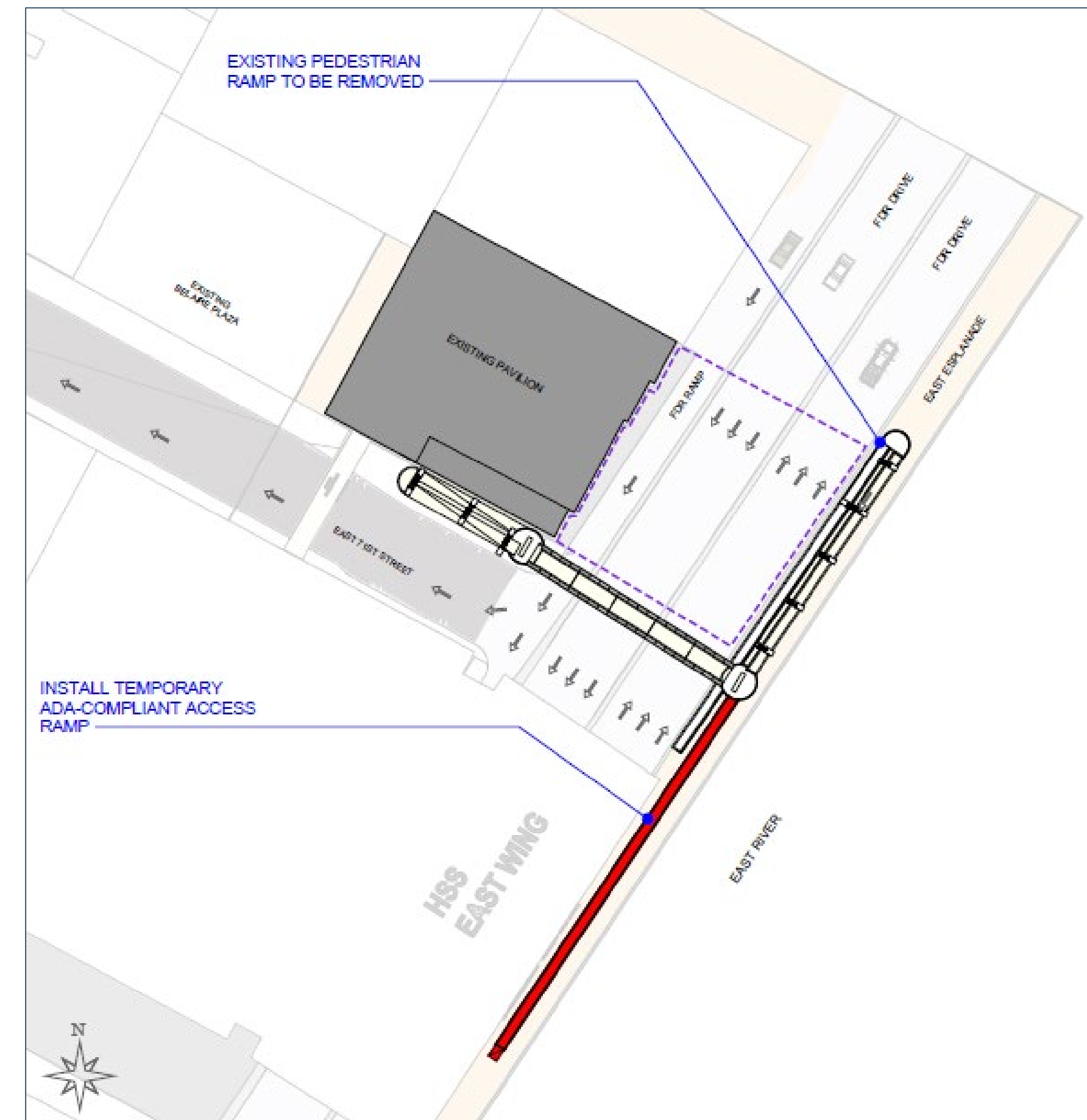


Notes: Diagram illustrative only | Subsequent site safety and logistics plans are being developed and will be approved for the building construction work

Site Logistics Overview for HSS Kellen Tower Building

Esplanade Access Planning

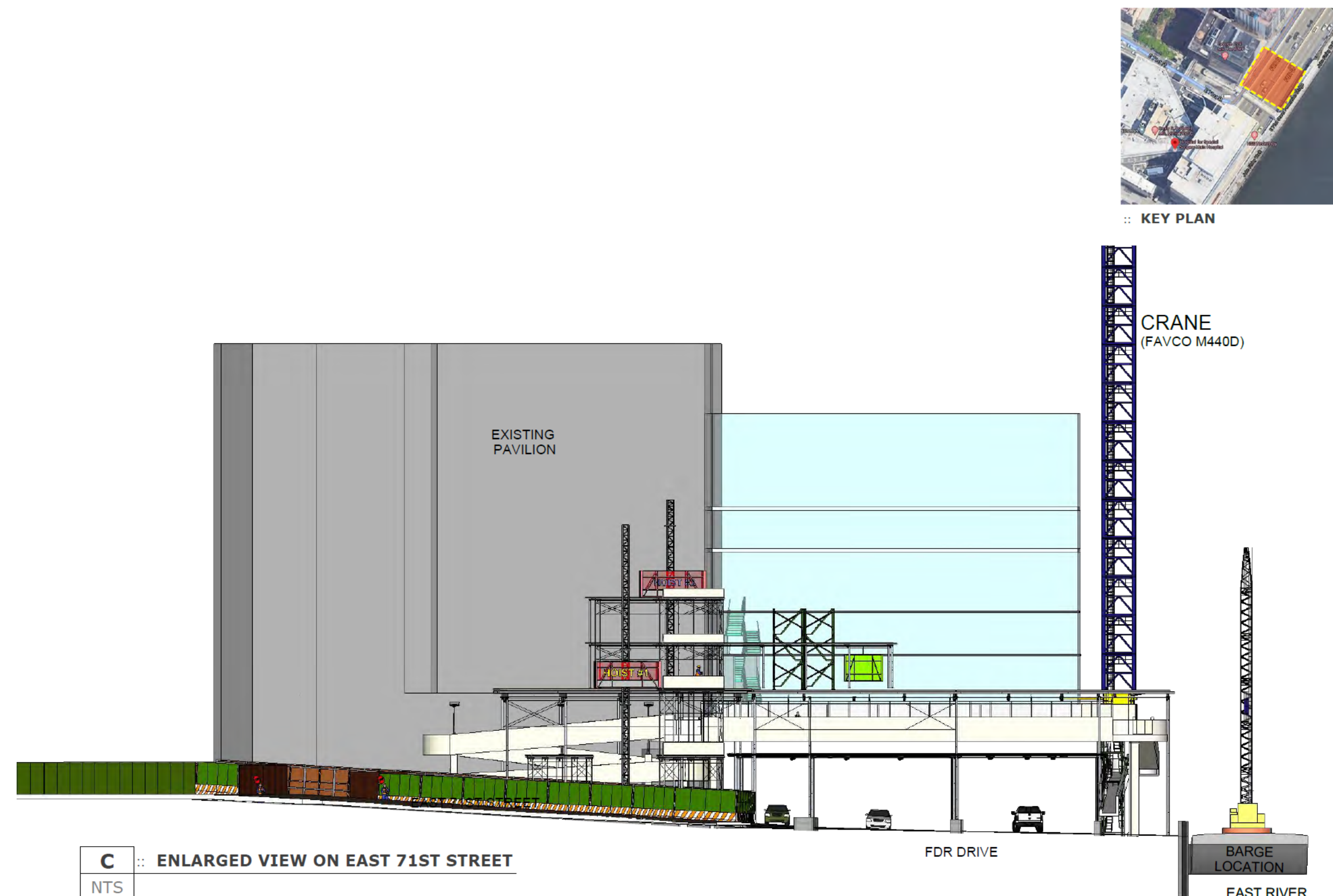
- The 71st Street Pedestrian bridge access to Esplanade will be closed for a time during the construction of the project
- Currently NYC Parks has an active project to improve the Esplanade from 70th to 68th Streets scheduled to be completed in May 2022; upon completion of this project, the pedestrian bridge access can be restored for public access to the Esplanade south of 70th Streets
- Access to the East River Esplanade via 78th and 63rd Street Pedestrian Bridges will remain uninterrupted by the HSS project
- A temporary Pedestrian ramp will be installed going south on Esplanade to allow the public continued access to the Esplanade southbound of 70th Street for the duration of the project
- A temporary stair tower from the Pedestrian bridge will allow access for the construction team to the site work area between 70th and 72nd Streets



Site Logistics Overview for HSS Kellen Tower Building

Continued Planning and Coordination

- Currently working with NYC Department of Transportation on stipulations for lane closures and shutdowns
- Work requires extended weekend shutdowns of the FDR in Spring 2022 for lifting a steel deck from barges in the East River
- A work platform/protection above the FDR and on the underside of the new HSS Kellen Tower extending 20' north and south of new building will allow traffic on the FDR while the HSS Kellen Tower is built
- Section of the east esplanade will be closed during the portion of the construction as barge operations will facilitate steel erection
- Sections of the Esplanade from 70th to 78th will be closed at different times during construction for Improvements



Site Overview

HSS



LEGEND ■ = New HSS Kellen Tower | ■ = Construction Site Area | ■ = Existing HSS Main Campus Location
■ = Temporary Pedestrian Ramp Location | ■ = Additional Area of Esplanade Improvement

Continued Collaboration for Esplanade Improvements



- Initial esplanade improvement by HSS from 70th to 72nd Streets (completed 2018) at a cost of \$1.8M
- On-going coordination with NYC Parks on design
- On-going communications between HSS and NYC Parks for repairs of the two existing sink holes south of 71st
- Schedule of construction to be coordinated with NYC DOT and the NYC Parks Department
- Continued improvement Construction of Esplanade improvements planned from 70th to 78th Street will be managed by HSS and coordinated with new HSS Kellen Tower logistics budgeted at \$6.65M

HSS Kellen Tower Schedule

HSS

2021

Site Preparation

Starting July 2021

2022

★ **Groundbreaking** | October 2021

**Foundations and
Building Supports**

Starting October 2021

2023

**Steel and Platform
Delivery and Installation**

Starting Q2 2022

★ **Topping Off** | Q3 2023

Building Fit Out

Q3 2023

**Opening
2024**



- On-going coordination on East River Esplanade design with NYC Parks Department and landscape architect Quennell Rothschild & Partners
- Once design is fully approved, logistical coordination and schedule determination begins with HSS, NYC DOT and Parks
- Additional updates will be provided to CB8 by HSS as plans progress

Our community can follow project updates on our website at:

<https://www.hss.edu/hss-kellen-tower.asp>

Questions from the community can be sent to:

[**publicrelations@hss.edu**](mailto:publicrelations@hss.edu)

On the website, you may also sign up for our monthly newsletter to keep up to date on the project.

Construction is expected to
begin in fall 2021. Check
back here for updates on
our progress.

Receive email updates

HSS Main Campus in 2024

HSS

