

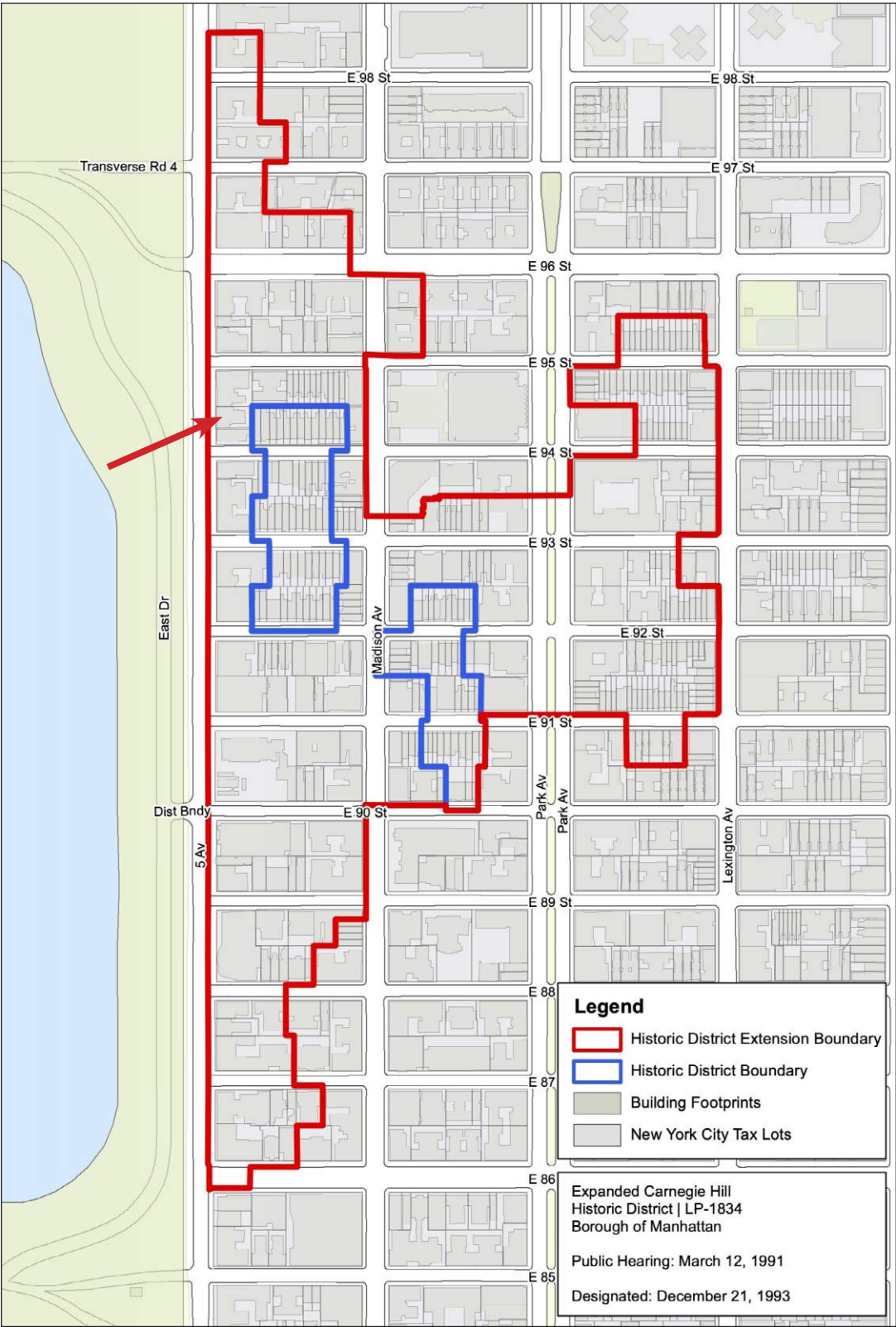
Presentation to the New York City Landmarks Preservation Commission

1133 Fifth Avenue - PH
New York, NY

October 18th, 2021



2006 view of 1133 Fifth Avenue. (Property Shark)



Historic district map. (LPC)



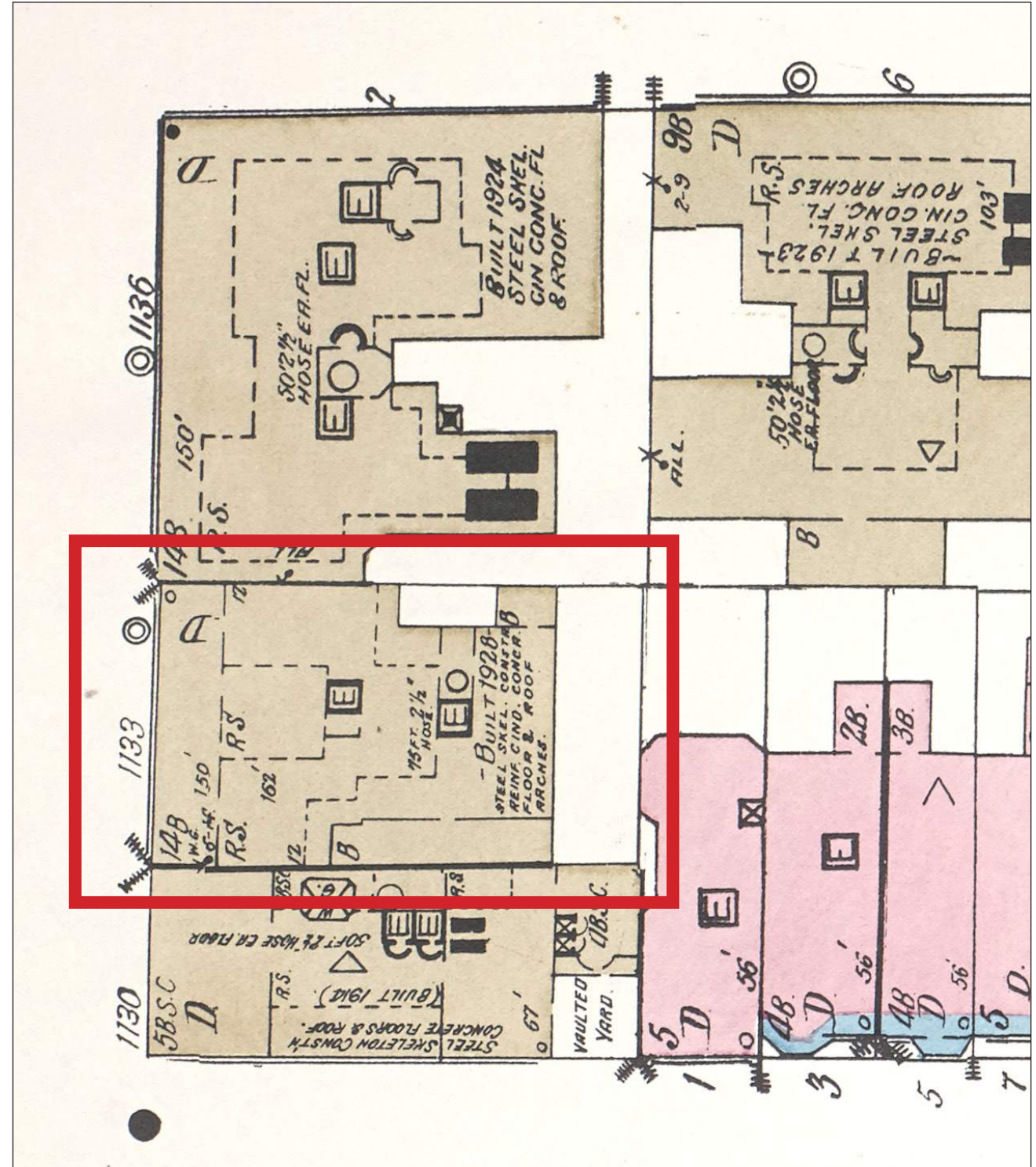
Detail view 1133 Fifth Avenue.



Detail view of east elevation.



1928 view of 1133 Fifth Avenue. (NYT)



1939 Sanborn map of 1133 Fifth Avenue. (LOC)



1940 view of 1133 Fifth Avenue. (Municipal Archives)



Detail view of penthouse level.



1940 view of 1133 Fifth Avenue. (Municipal Archives)



Detail view of penthouse level.



Ca. 1985 view of 1133 Fifth Avenue. (Municipal Archives)



Detail view of penthouse level.



Detail view 1133 Fifth Avenue.



Detail view of east elevation.



1931 view across Central Park showing the Fifth Avenue context, historically. (NYPL)

Homes on The Roofs

Penthouses Under the Sky Are Prized by City Dwellers, but Few Can Be Had

TWO rooms and bath among the clouds. This is the home which many New Yorkers are now seeking, and which a few are finding. The quest leads over the roofs of New York City, disclosing unexpected and delightful vistas, and sometimes expected and less delightful ones. But only the fortunate person ends his pilgrimage the proud possessor of a sky-swung habitat. For these land-bound lighthouses are scarce; the fire laws do not encourage them.

There are less than a dozen available penthouses in the city, according to a pioneer who has blazed a trail over the tops of many obscure as well as imposing structures.

1924 article in the New York Times.

Gotham's Sky Gardens

Flowers Now Bloom Atop Skyscrapers



New York's Hanging Terraces Rival Those of Ancient Babylon

M. E. Hewitt Studios

AT LEAST once in the life of every New Yorker comes the thrill of meeting some one who is seeing the greatest city in the world for the first time. And if that some one chances to be a Californian—what happiness! Never boast to us about your canyons, mountains, giant plants by Burbank, sky-scraping trees of the Golden West; we can better them all. Ours are the darkest valleys, the most unscalable stone mountains, vines which reach higher than Jack's beanstalk and trees which overtop the sequoias.

There's a little trickery in these last two boasts; they are true, but with a difference. Our vines and trees do look down on those of California—but in the same sense that a poodle held in the arms looks down on a mastiff.

Since every foot of Manhattan must earn its thousands, the quaint gardens of two generations ago, paying no dividends but pleasure and beauty, no longer are to be seen by the casual passerby. But they have not ceased to exist. They have soared higher and higher, until now they are only a fringe of green against the sky.

More than 2,000 years ago a dynasty of Eastern kings built a city in which the modern New Yorker would have felt at home. Massive walls, palaces and towers of brick crowded each other on the banks of a river. One building, legend has it, touched the clouds. Many of the structures, like our zoning law skyscrapers, rose for a space, receded, rose again, receded again, reaching the top in a series of gigantic steps. These ancient builders, like our own, strove not for delicate effects, but worked for

1926 article in the New York Herald Tribune.

Homes in the Sky

Surrounded by Terrace and Garden, this Delightful Pent House Apartment Overlooking the Whole City Stands on a One Acre Roof in New York: Fourth in a Series



1928 article featuring the penthouse apartment at 1170 Fifth Ave. (Arts & Decoration)



1158 & 1150 Fifth Ave



1136 & 1133 Fifth Ave



1125 & 1120 Fifth Ave



1115 Fifth Ave



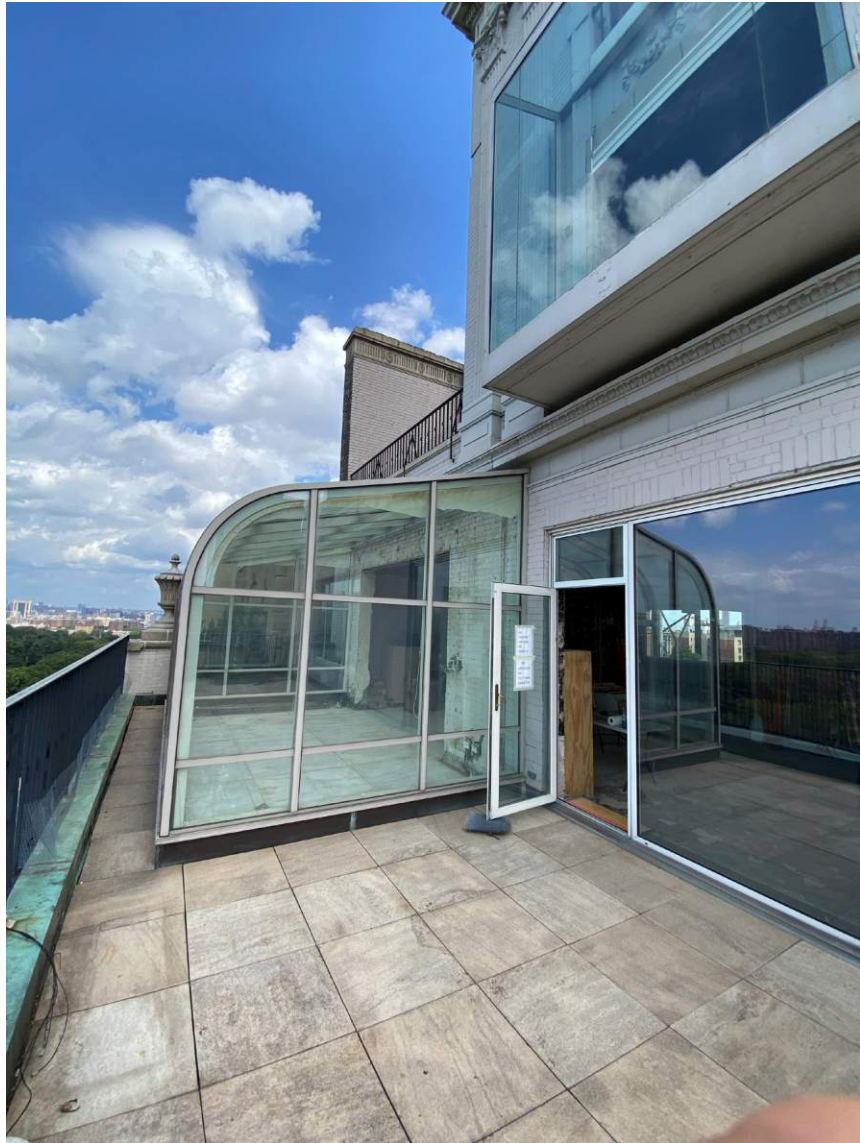
2 East 88th Street



Detail view urn at southwest corner of west terrace.



Detail view of existing railing along west terrace.



Detail view looking north at existing Greenhouse.



Detail view of existing lookout.



Detail view of southern masonry opening at west elevation.



View from 15th floor terrace looking west.



Detail view of existing pergola on 15th floor east terrace.



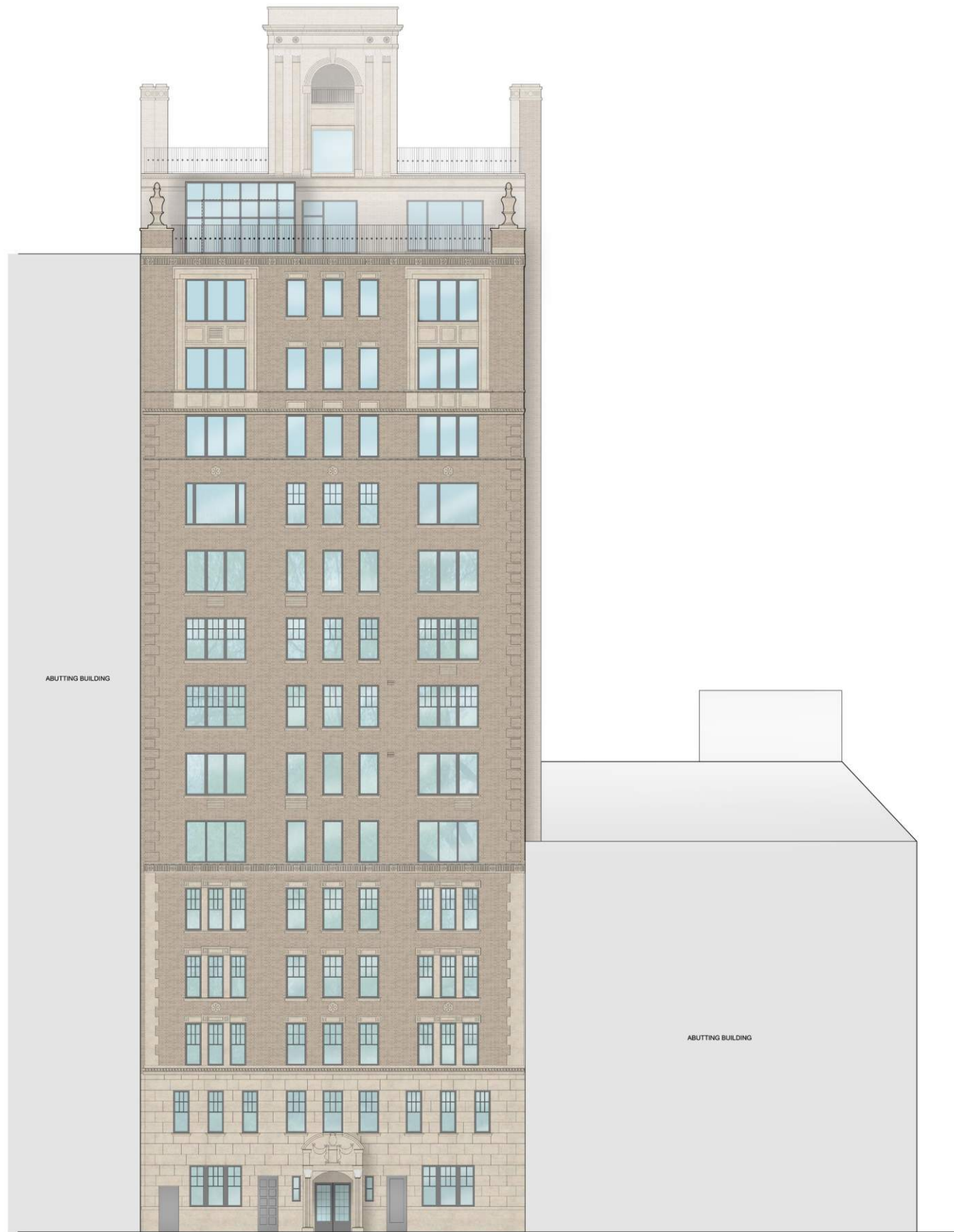
Detail view of tower entrance on 16th floor.



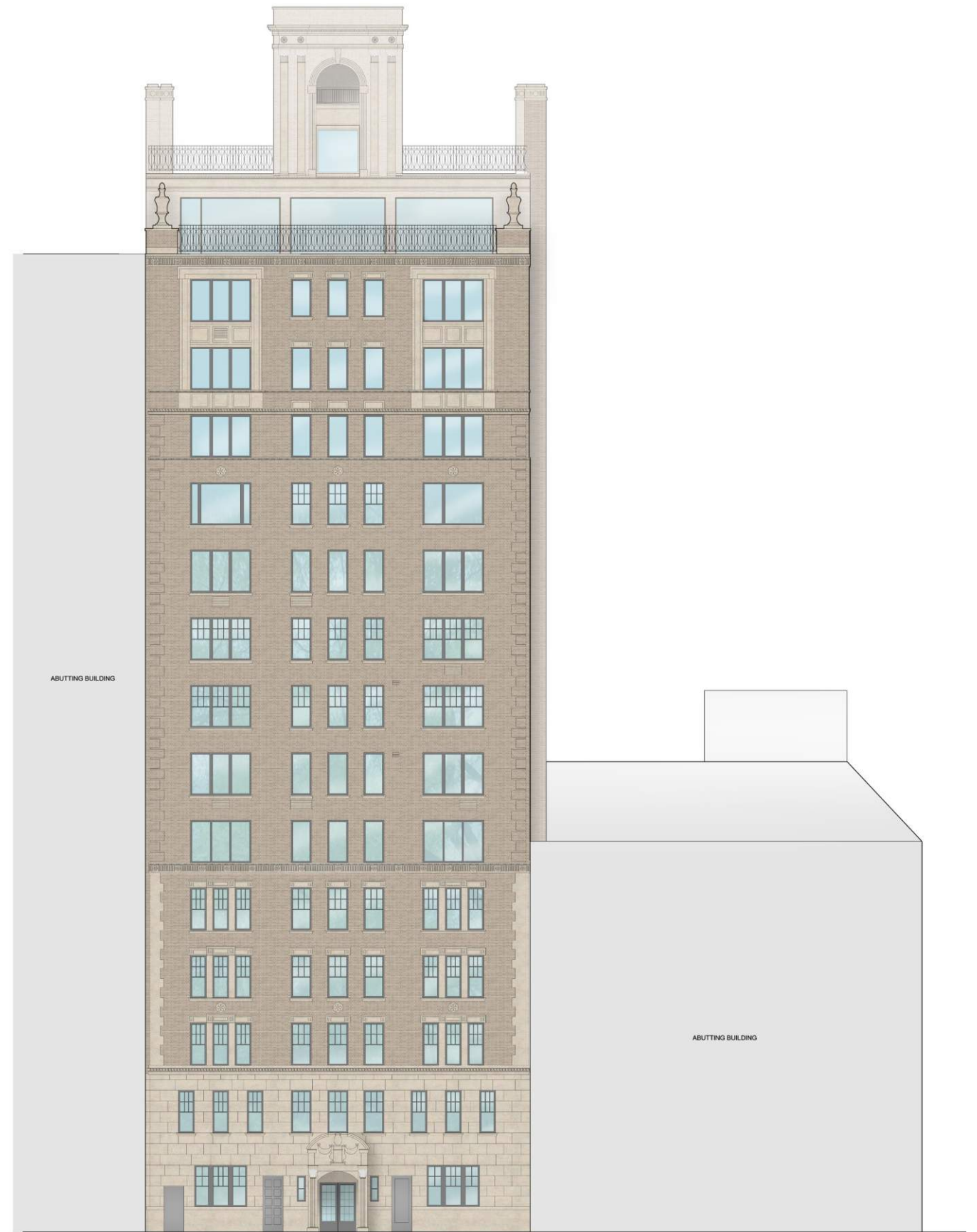
View looking east from 16th floor terrace.



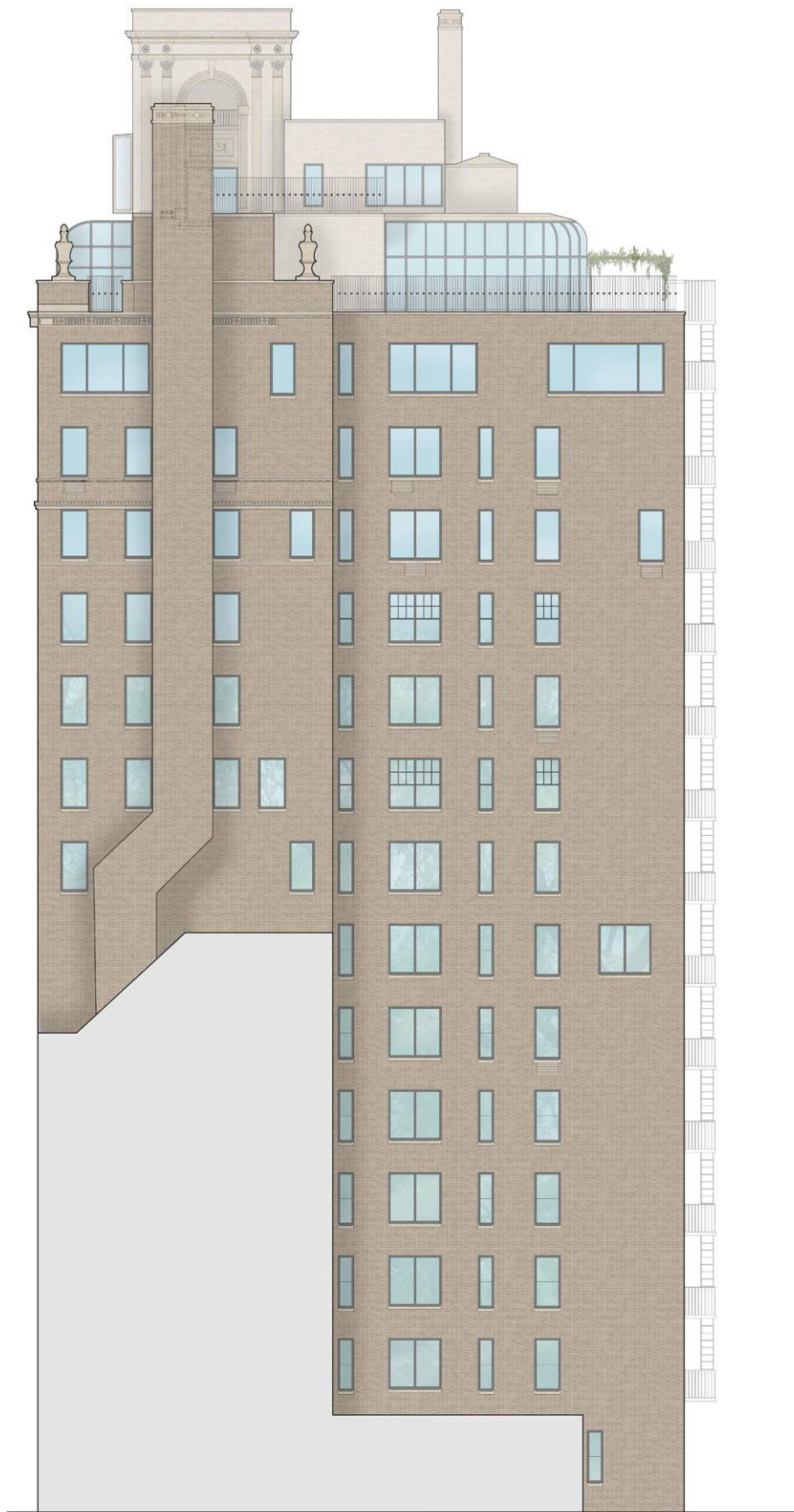
View looking northwest from 16th floor terrace.



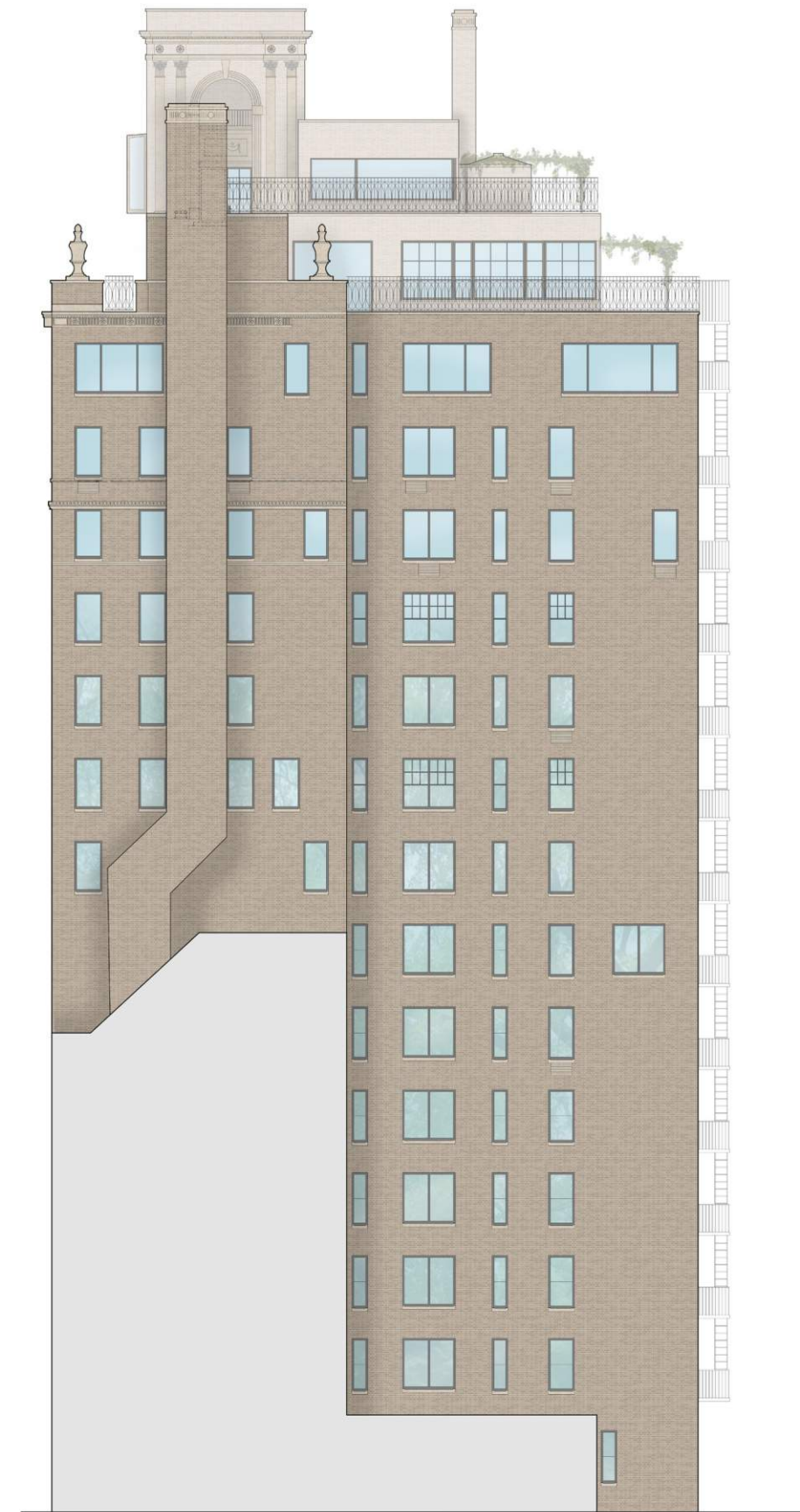
EXISTING



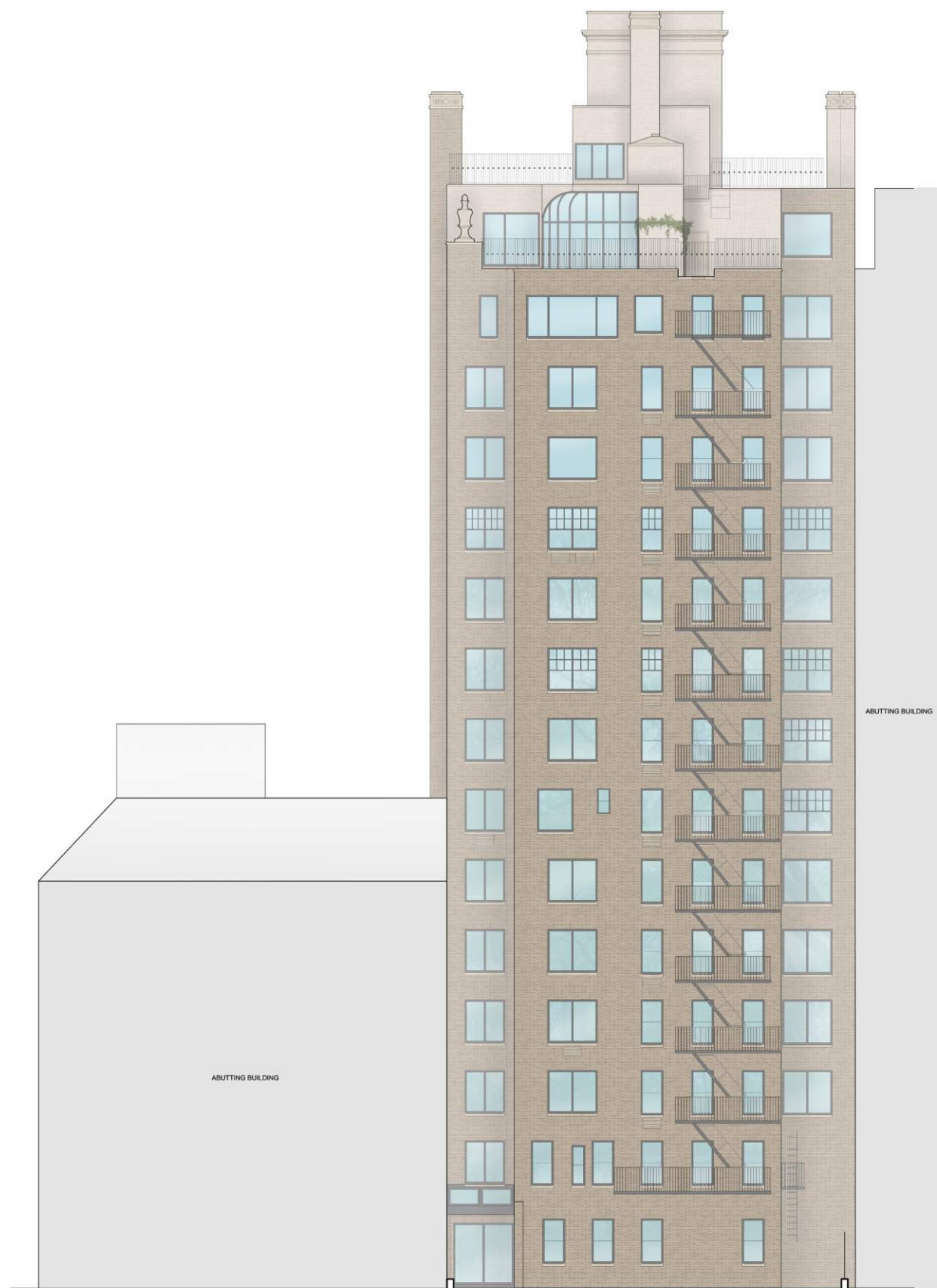
PROPOSED



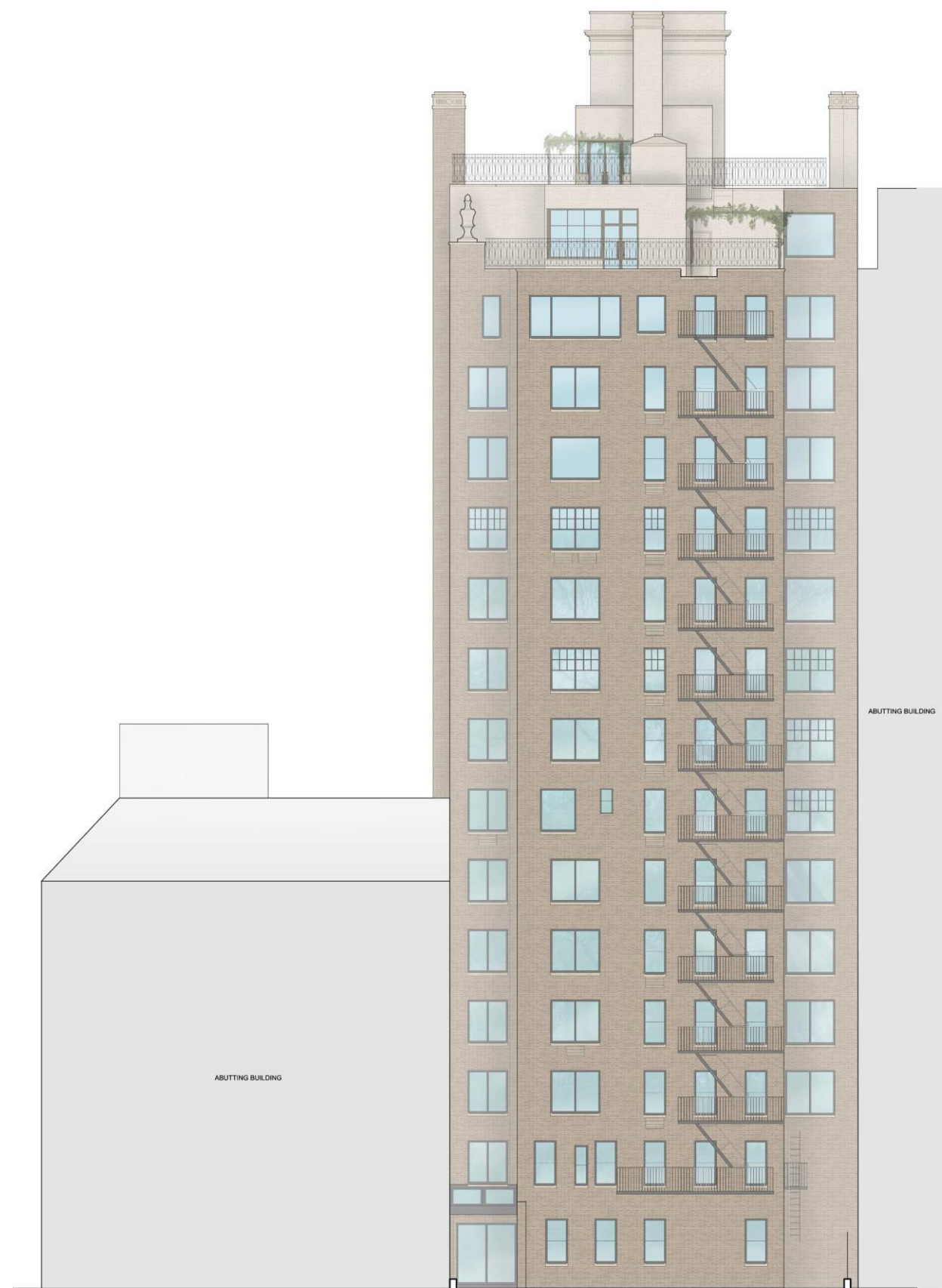
EXISTING



PROPOSED



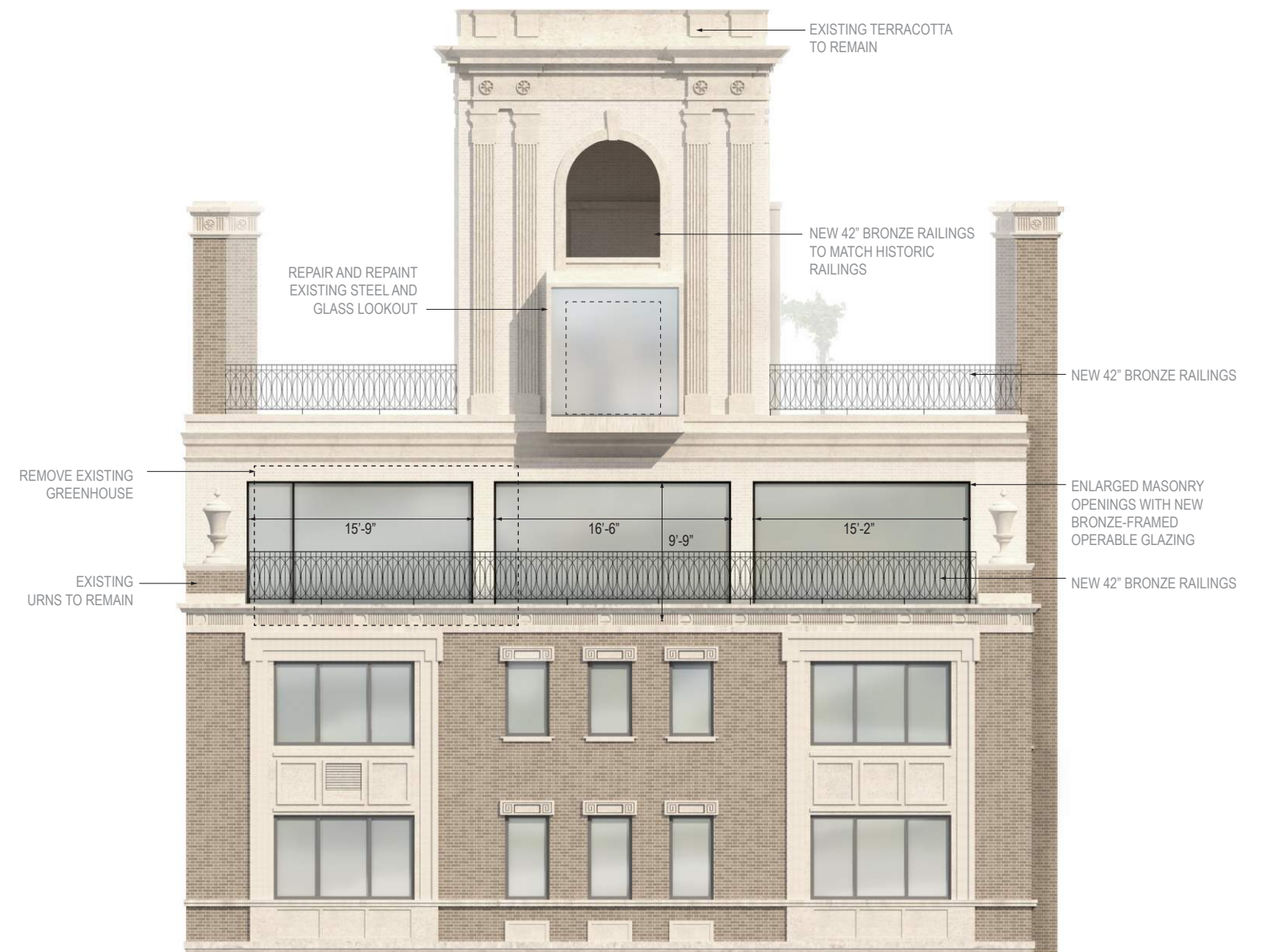
EXISTING



PROPOSED



EXISTING



PROPOSED



EXISTING



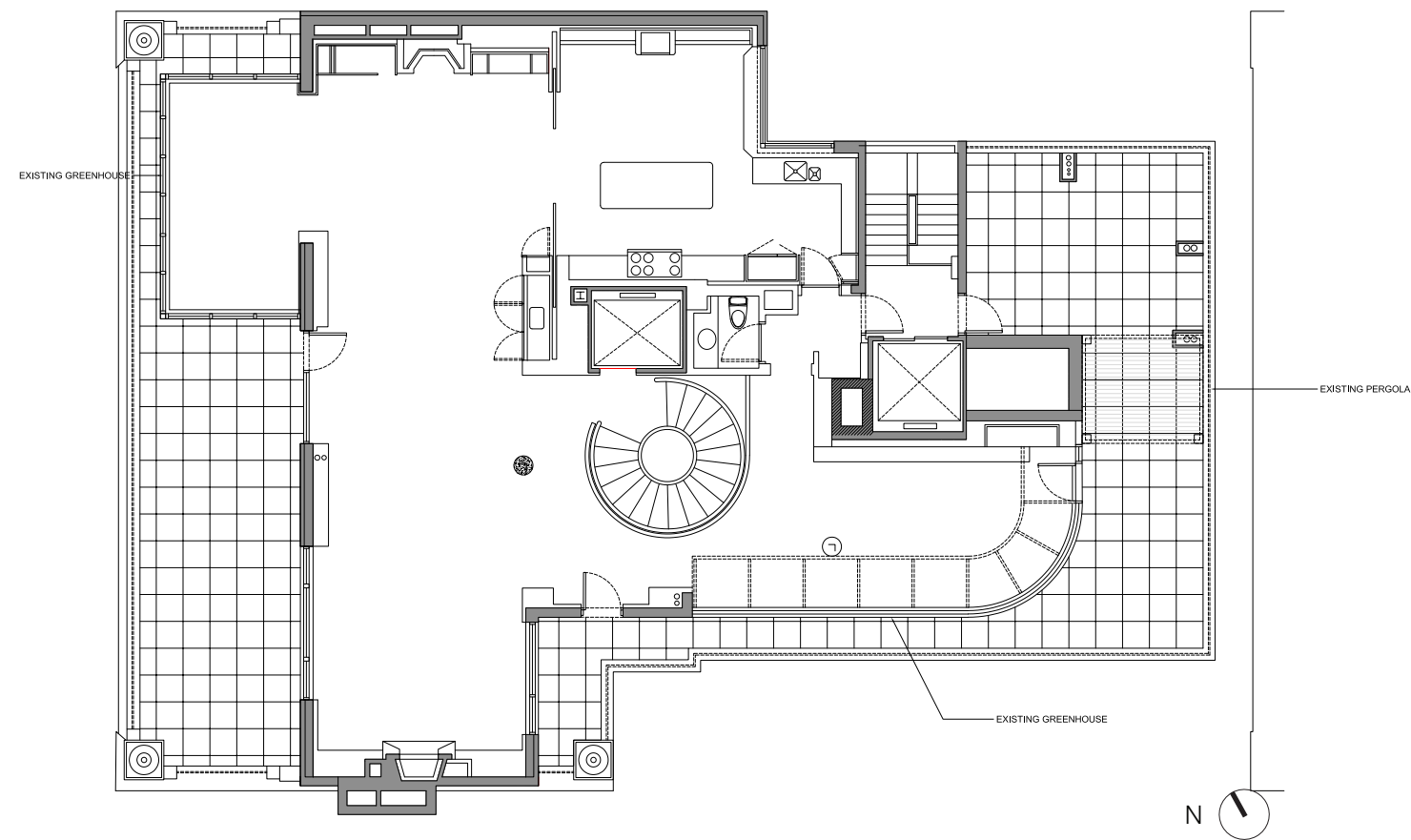
PROPOSED



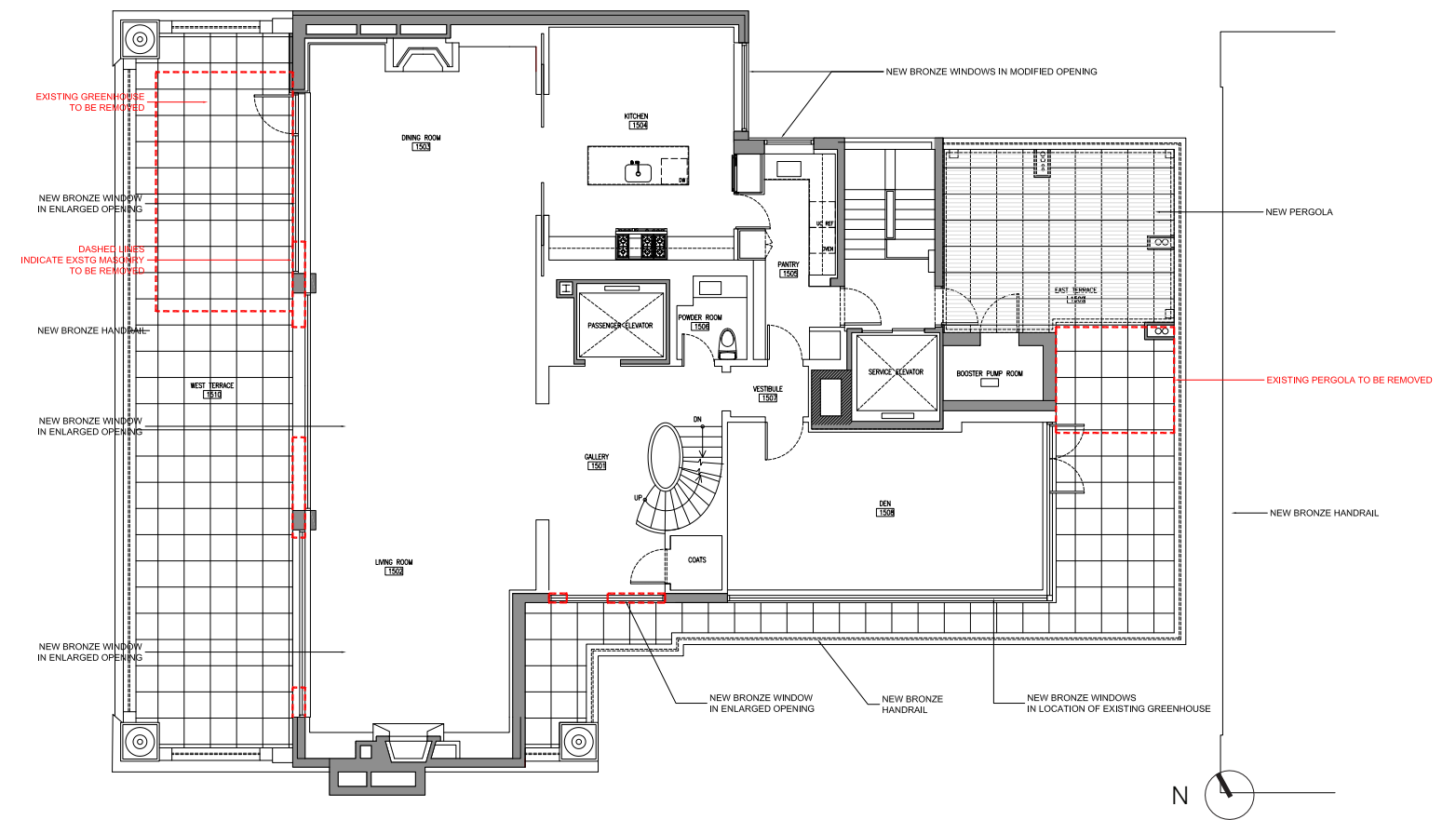
EXISTING



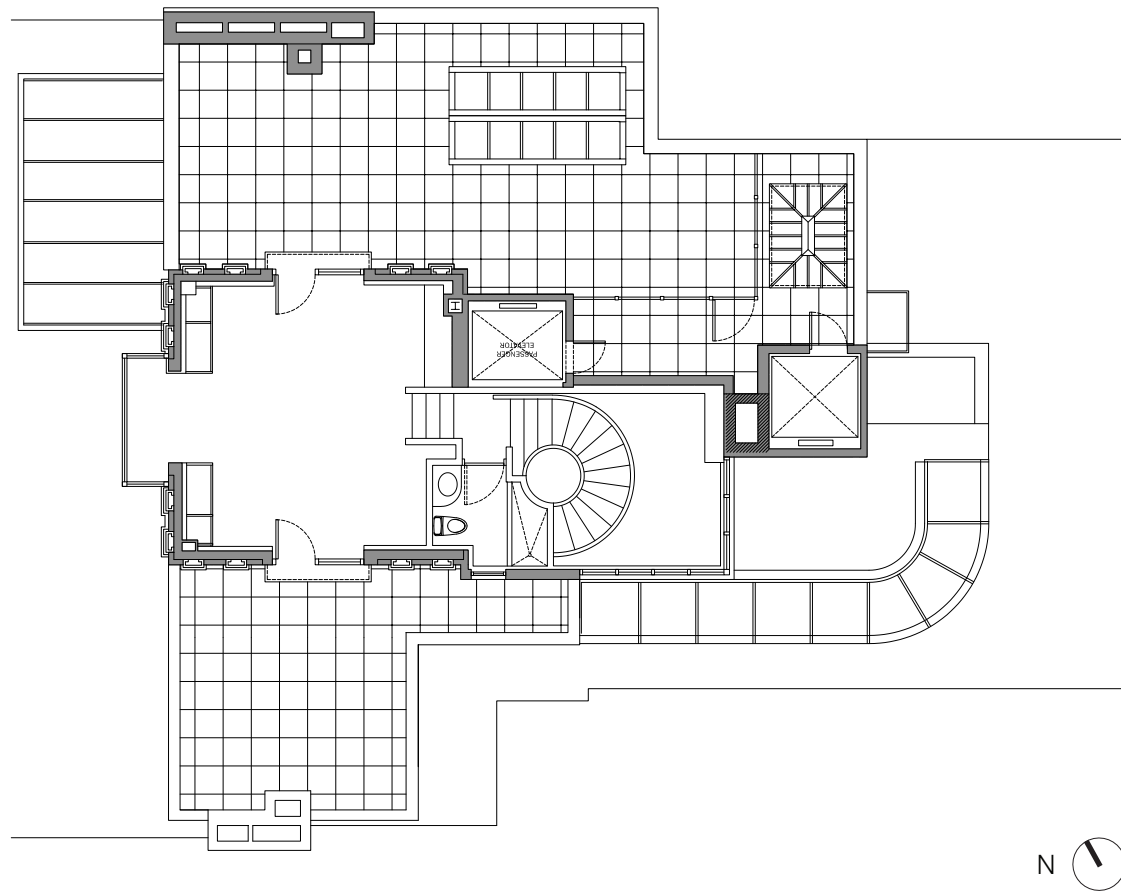
PROPOSED



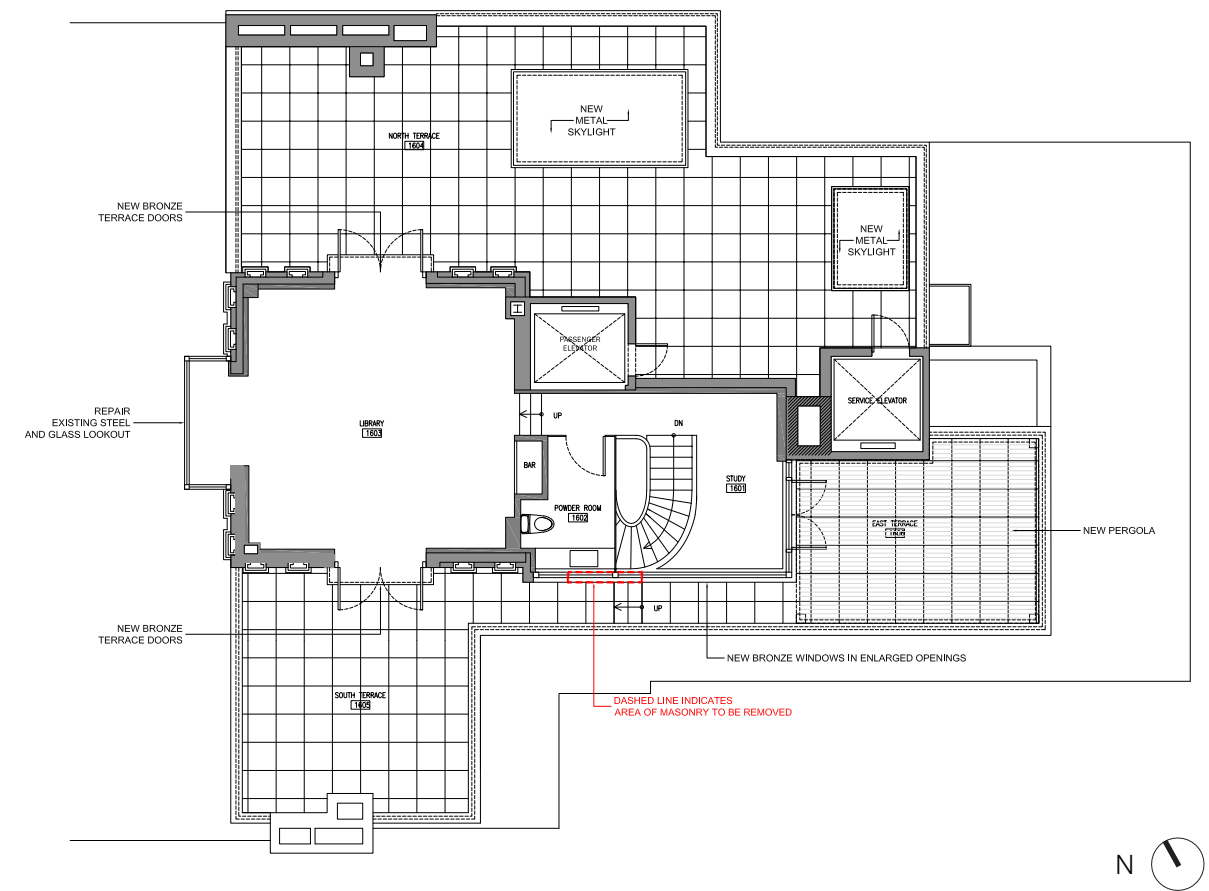
EXISTING



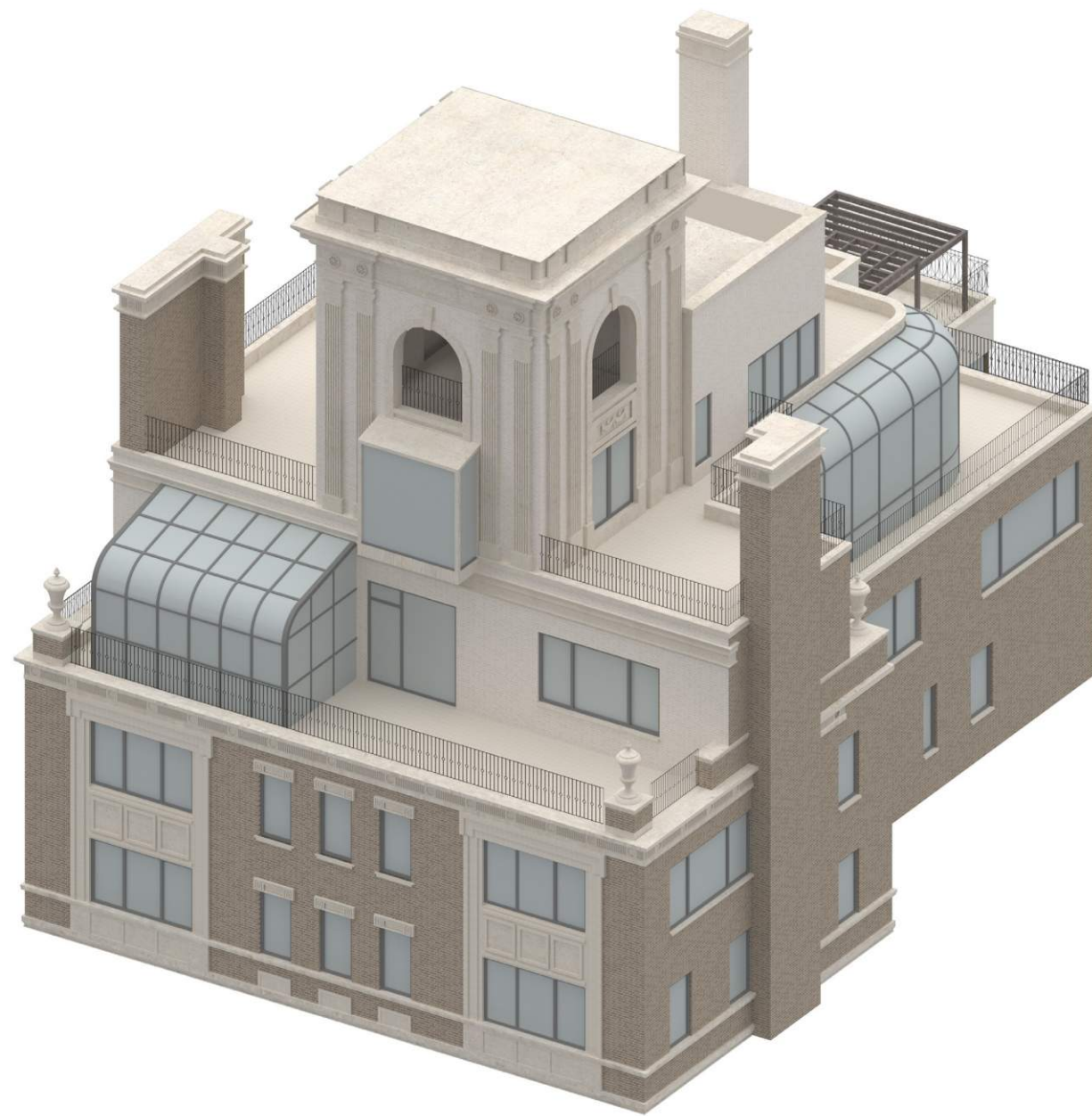
PROPOSED



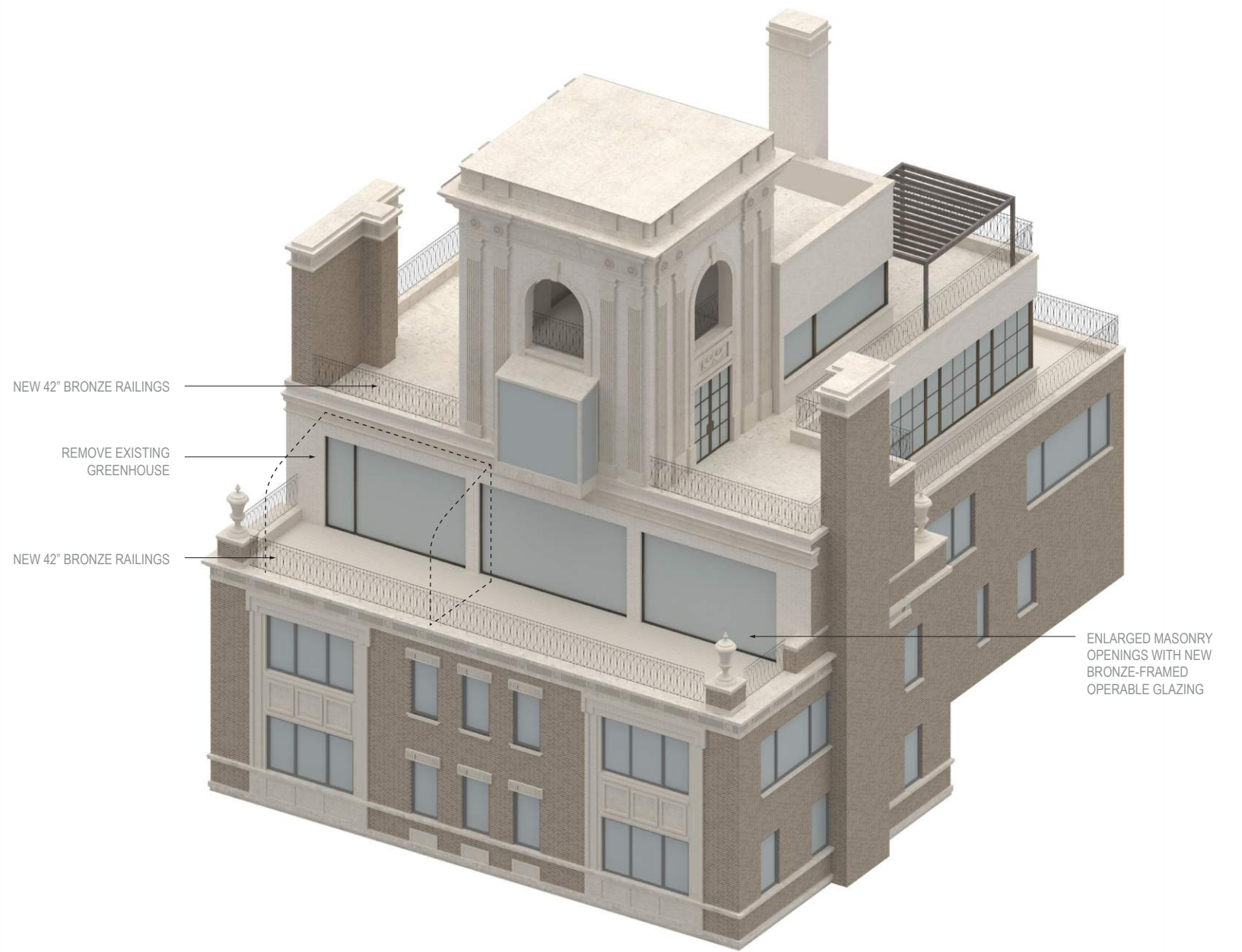
EXISTING



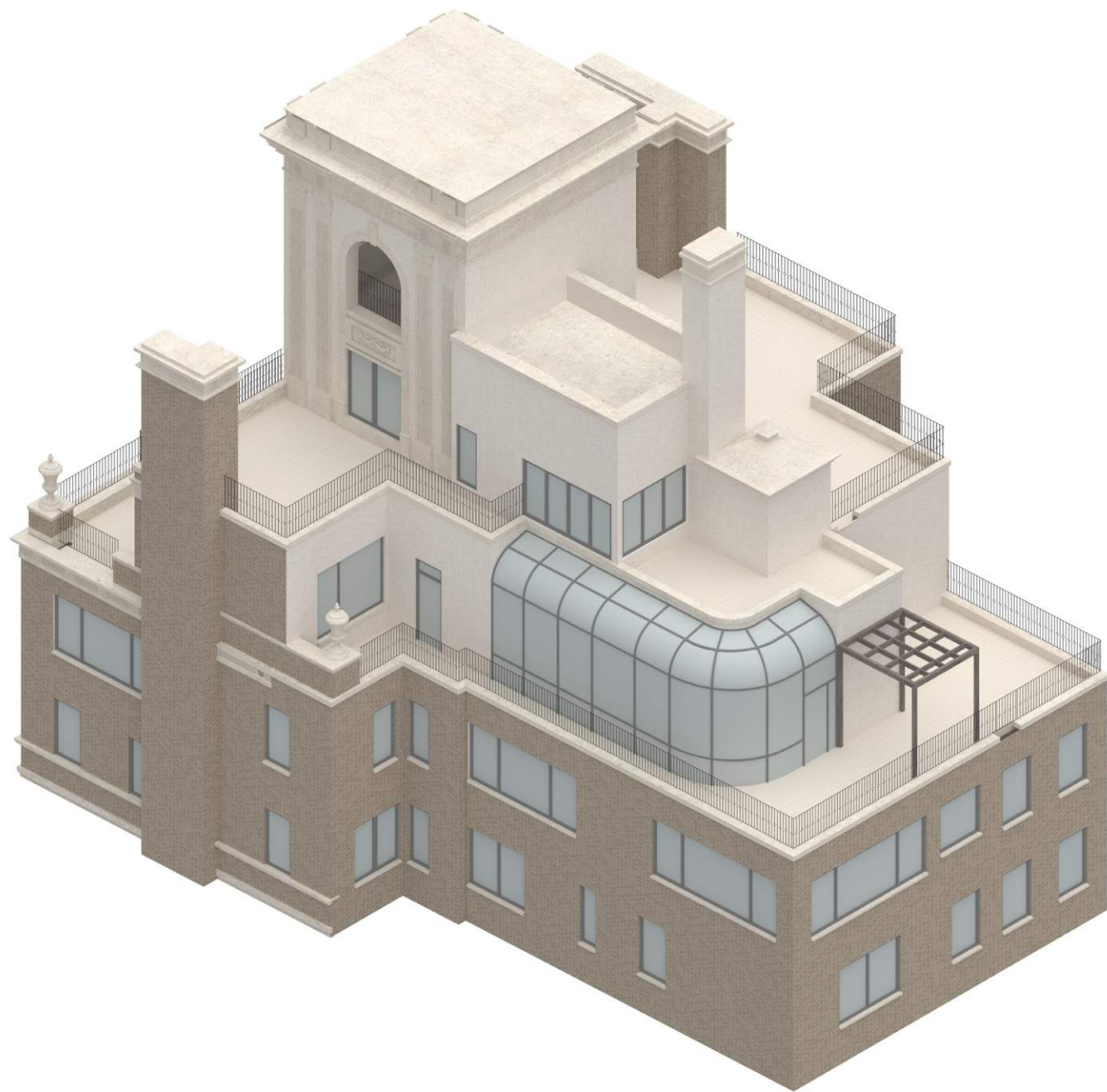
PROPOSED



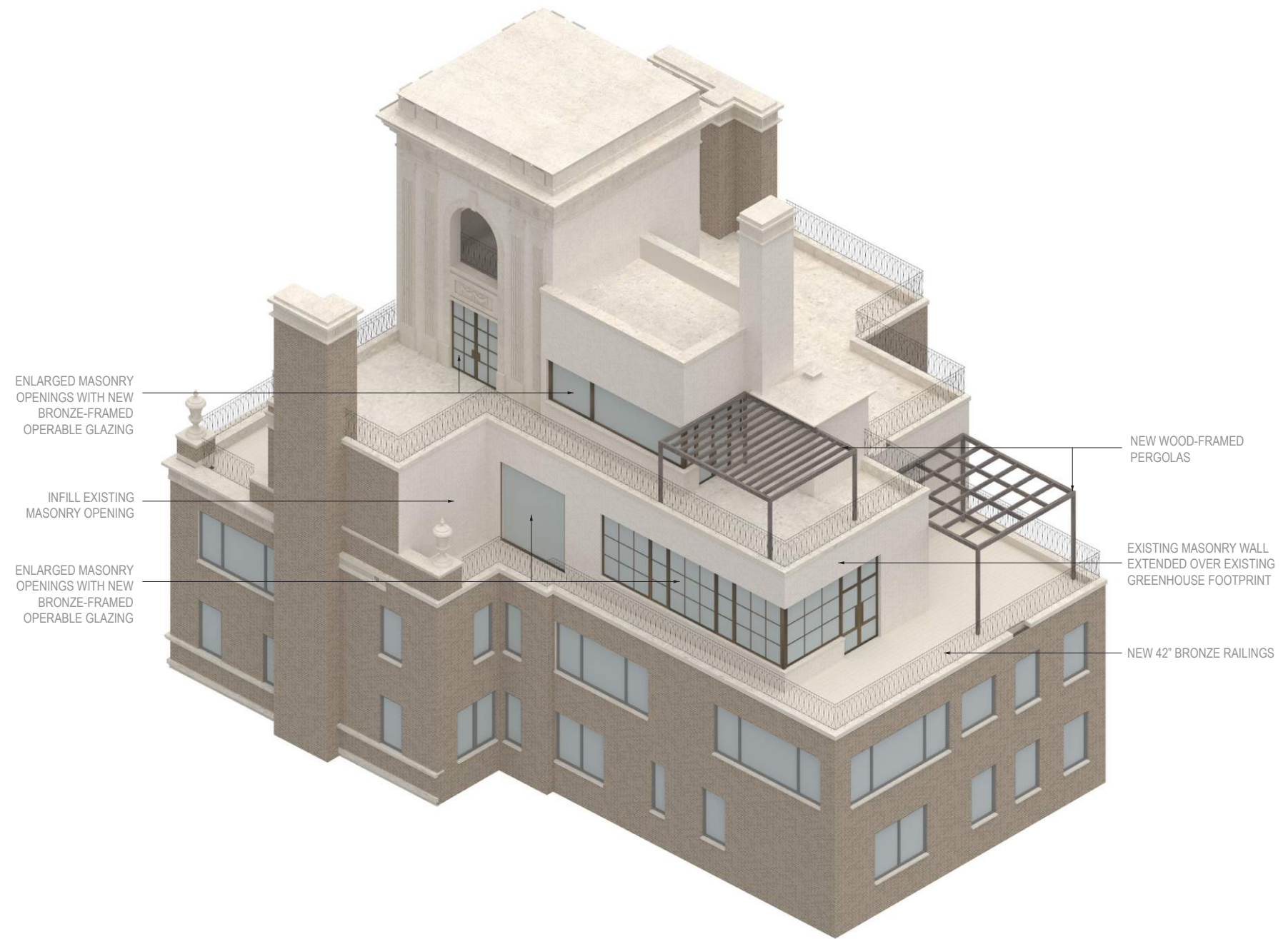
EXISTING



PROPOSED



EXISTING



PROPOSED





View of west facade from 5th Avenue.



View 2 looking northeast from Central Park.



EXTENT OF ENLARGED
MASONRY OPENINGS
MOCKED-UP IN RED

View 3 looking southeast from Central Park.



Existing view looking northeast from Cetnral Park.



EXTENT OF ENLARGED
MASONRY OPENINGS
MOCKED-UP IN RED

Existing detail view looking northeast from Central Park.



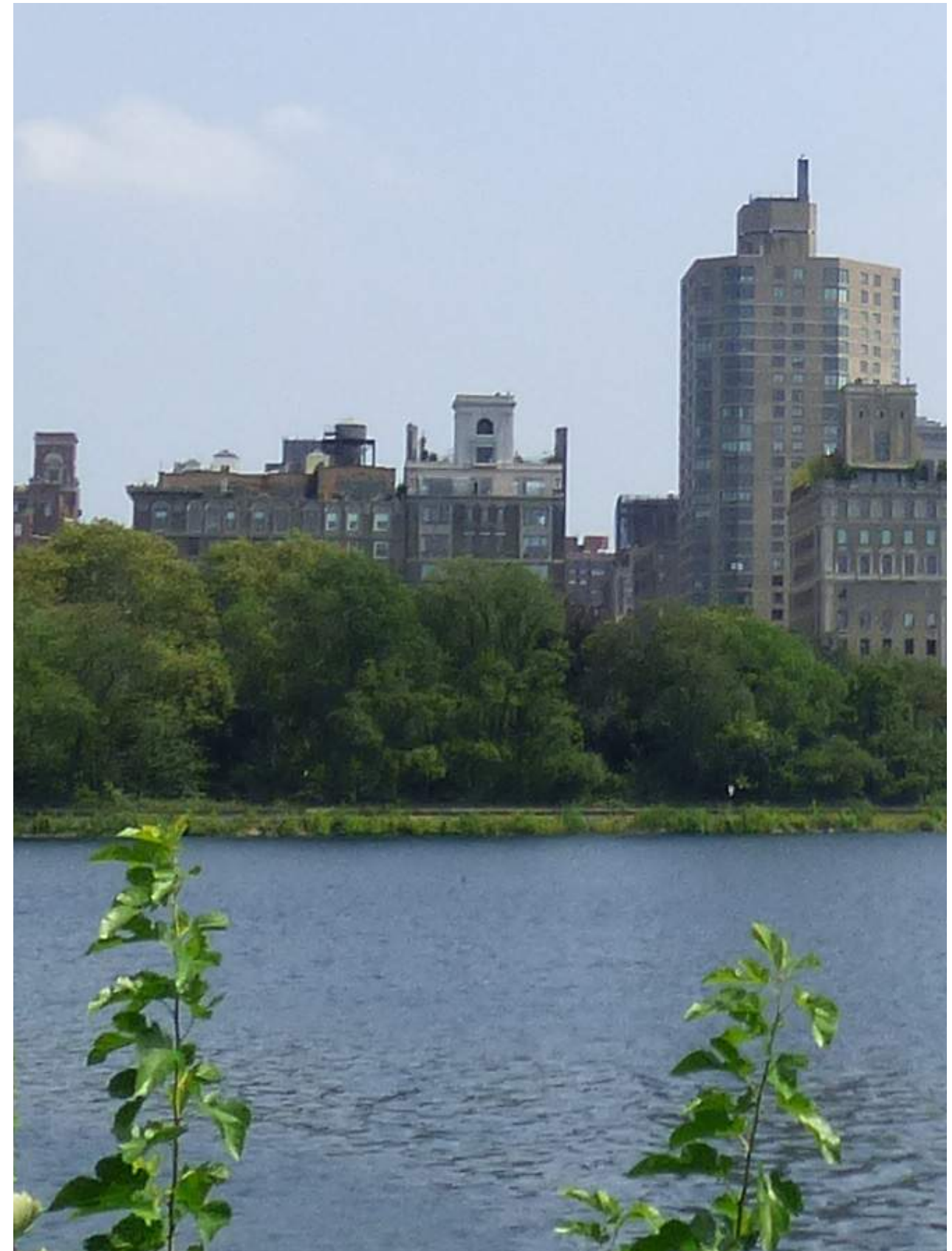
Proposed detail view looking northeast from Central Park.



Proposed detail view looking northeast from Central Park.



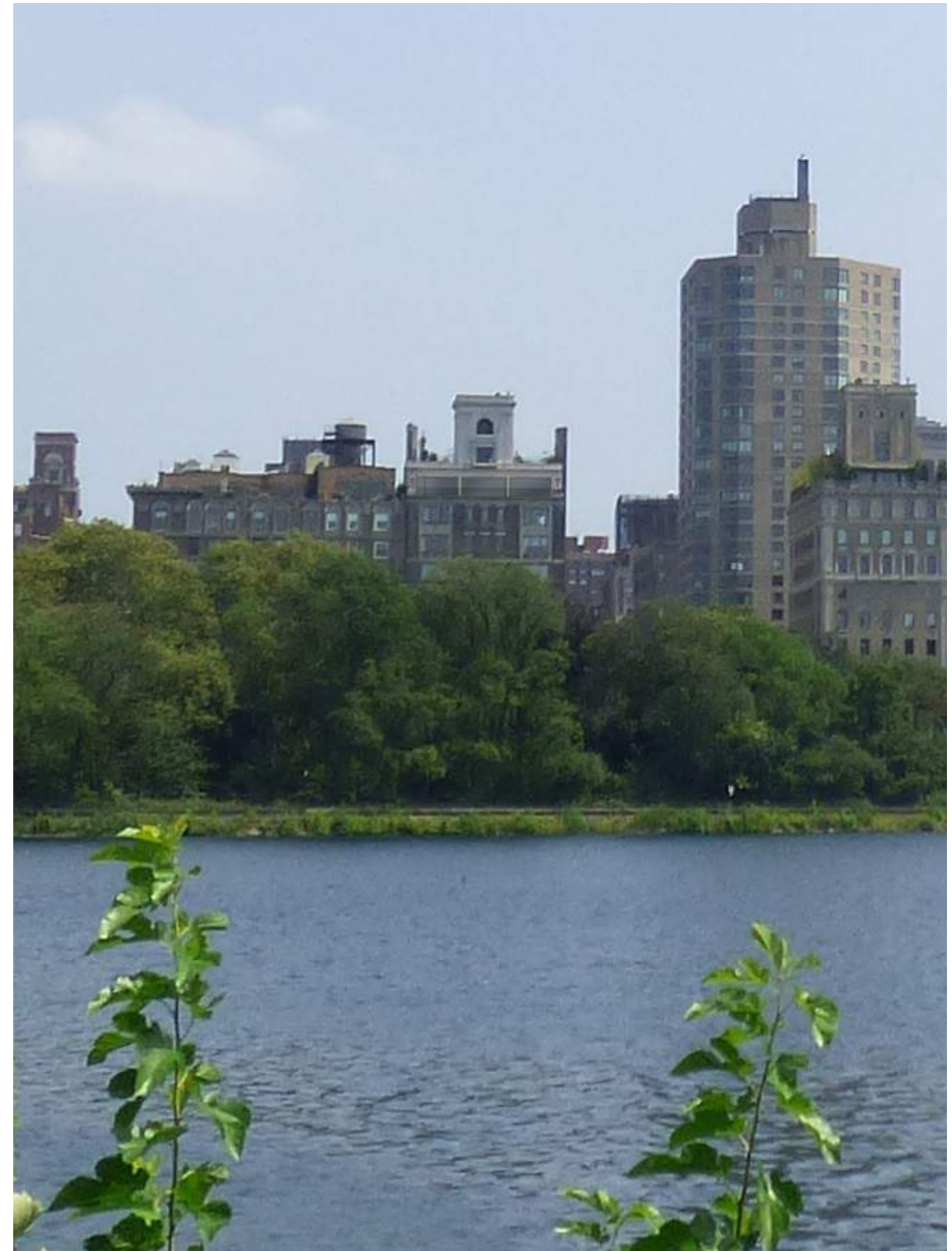
Existing view looking east from Central Park Reservoir.



Existing detail view looking east from Central Park Reservoir.



Proposed view looking east from Central Park Reservoir.



Proposed detail view looking east from Central Park Reservoir.



View looking northeast from corner of 94th Street & Madison Avenue.



HEIGHT OF PROPOSED
WOOD-FRAMED PERGOLA

HEIGHT OF PROPOSED
42" GUARD RAIL

EXTENT OF PROPOSED
BUILDING MOCKED-UP
IN RED

Detail view looking northeast from corner of 94th Street & Madison Avenue.



HEIGHT OF PROPOSED
WOOD-FRAMED PERGOLA

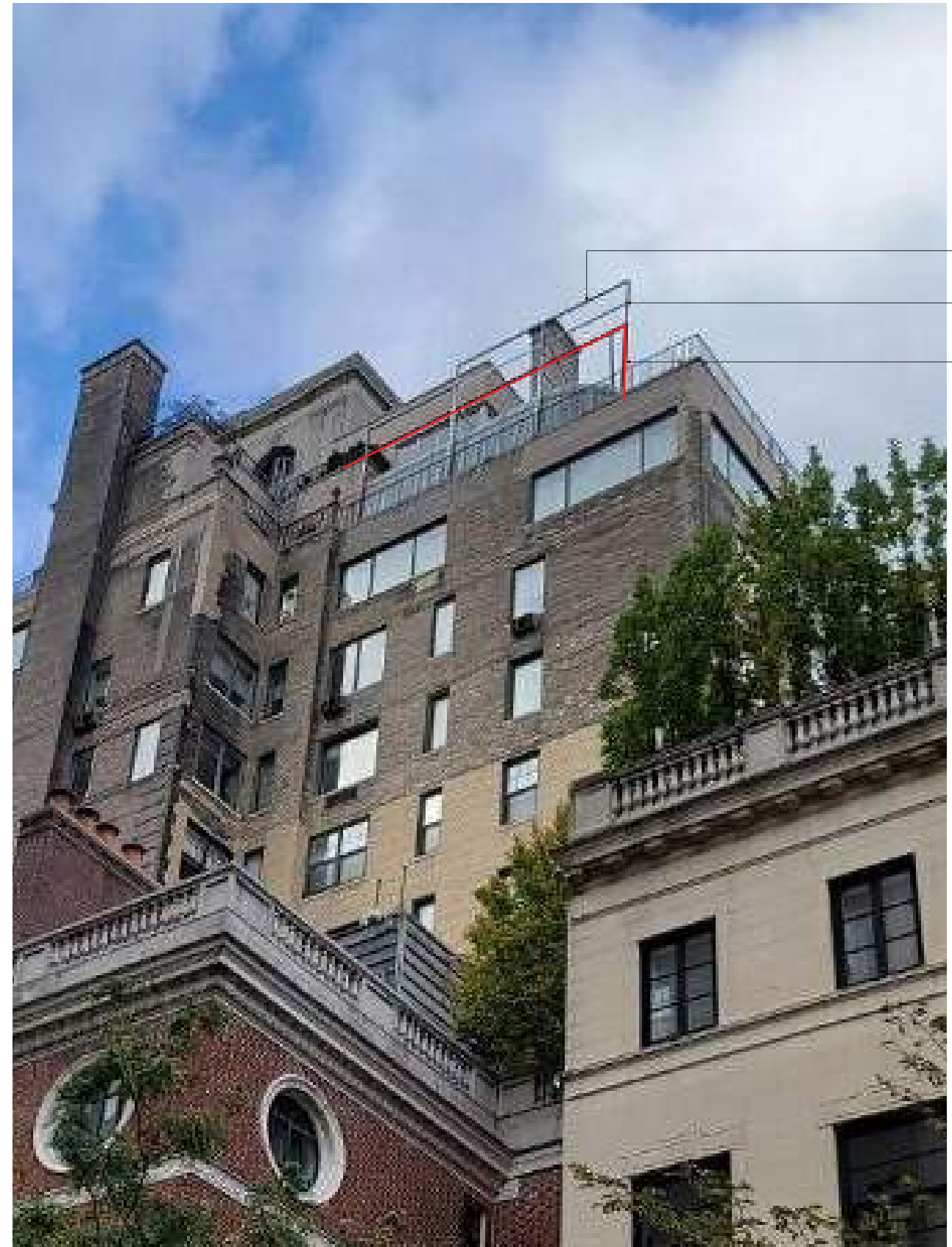
HEIGHT OF PROPOSED
42" GUARD RAIL

EXTENT OF PROPOSED
BUILDING MOCKED-UP
IN RED

View looking north from 94th Street.



Existing view looking northwest from 94th Street.



- HEIGHT OF PROPOSED WOOD-FRAMED PERGOLA
- HEIGHT OF PROPOSED 42" GUARD RAIL
- EXTENT OF PROPOSED BUILDING MOCKED-UP IN RED

Existing detail view looking northwest from 94th Street.



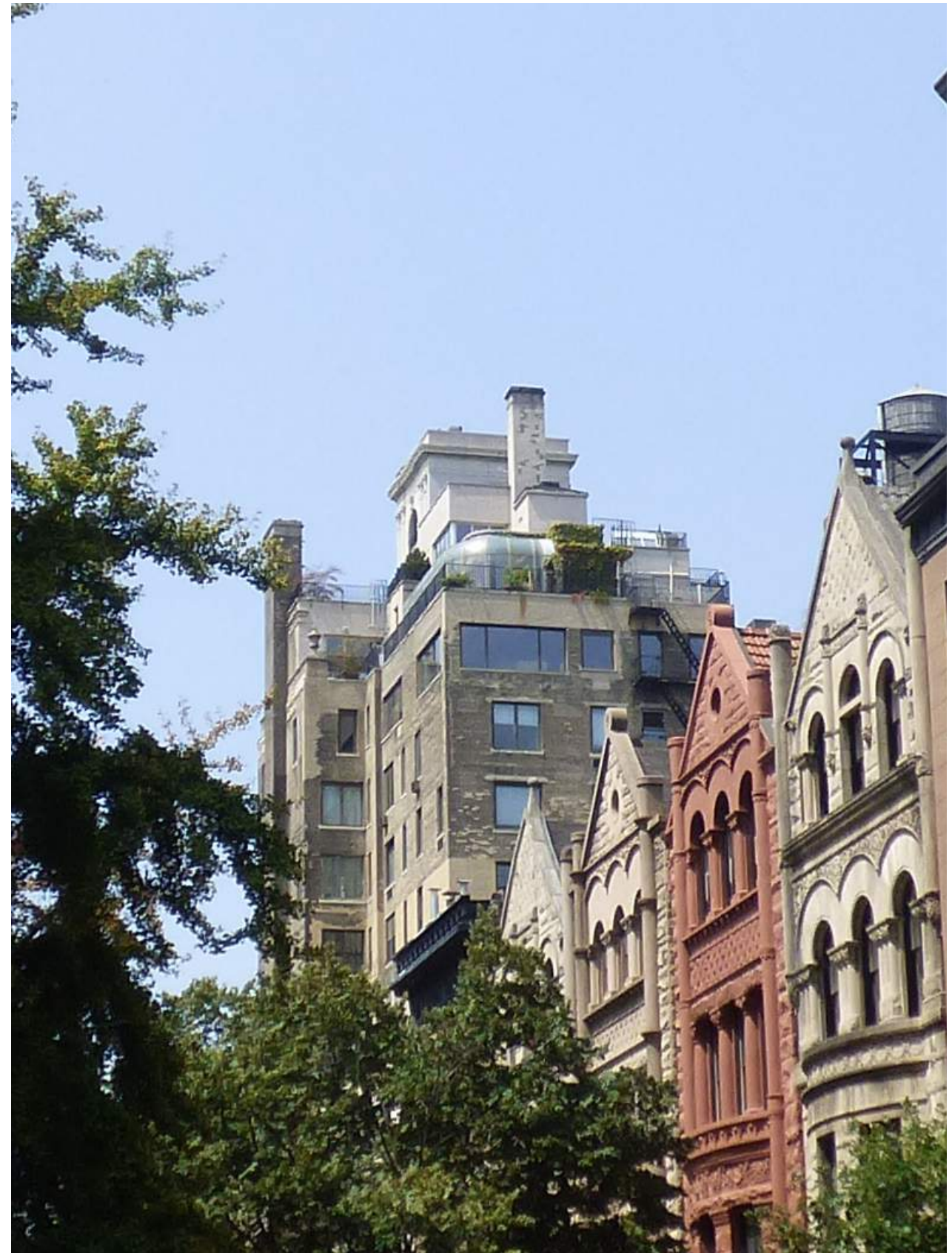
Proposed view looking northwest from 94th Street.



Proposed detail view looking northwest from 94th Street.



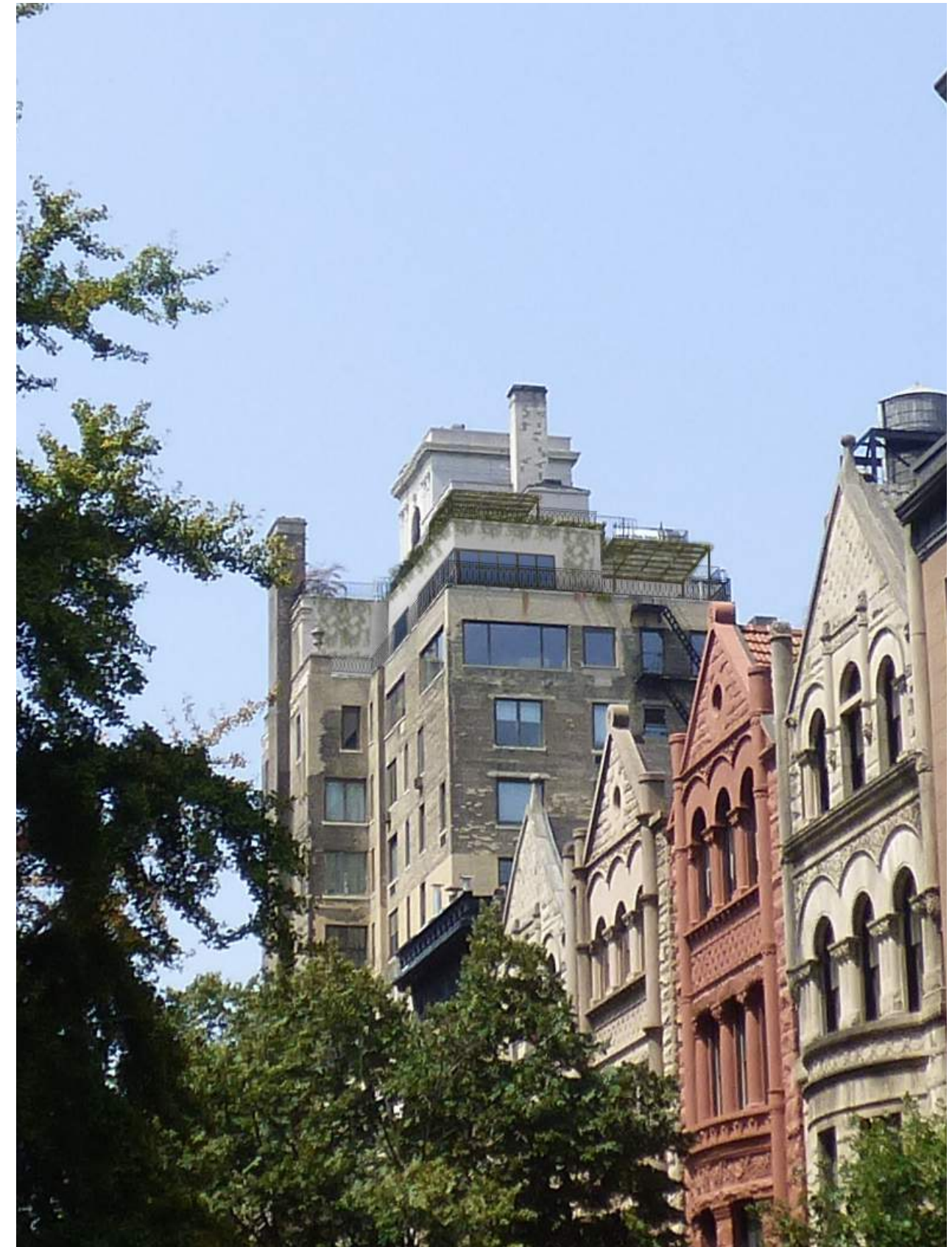
Existing view looking northwest from corner 94th Street and Madison Ave.



Existing detail view looking northwest from corner 94th Street and Madison Ave.

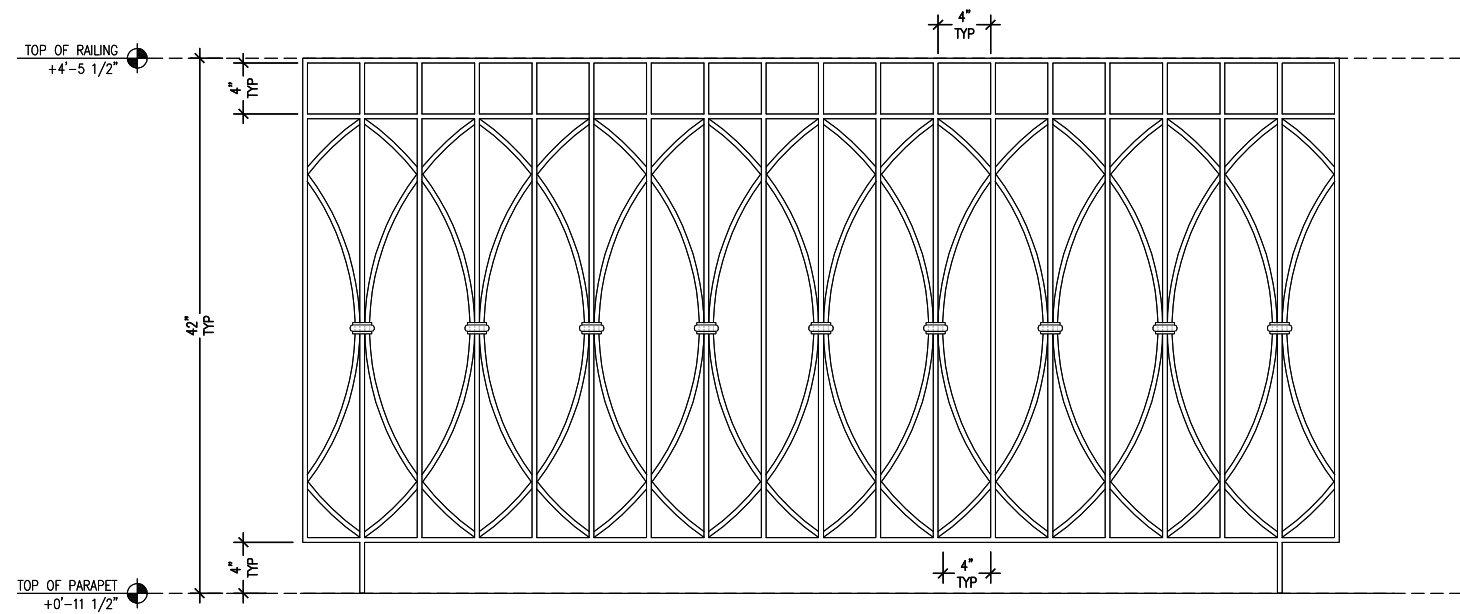


Proposed view looking northwest from corner 94th Street and Madison Ave.

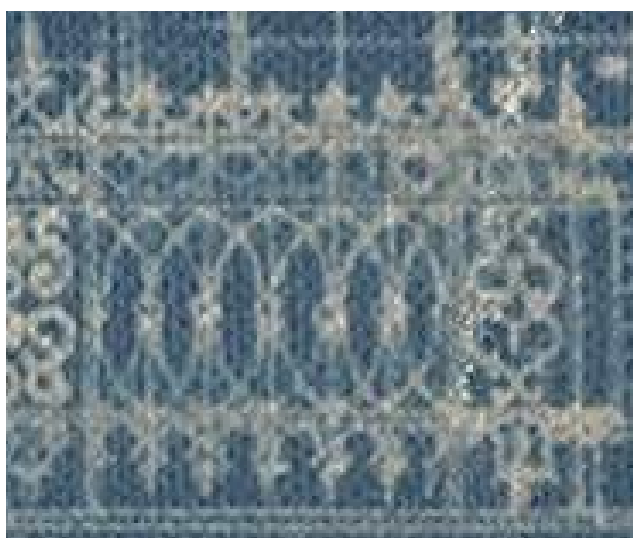


Proposed detail view looking northwest from corner 94th Street and Madison Ave.

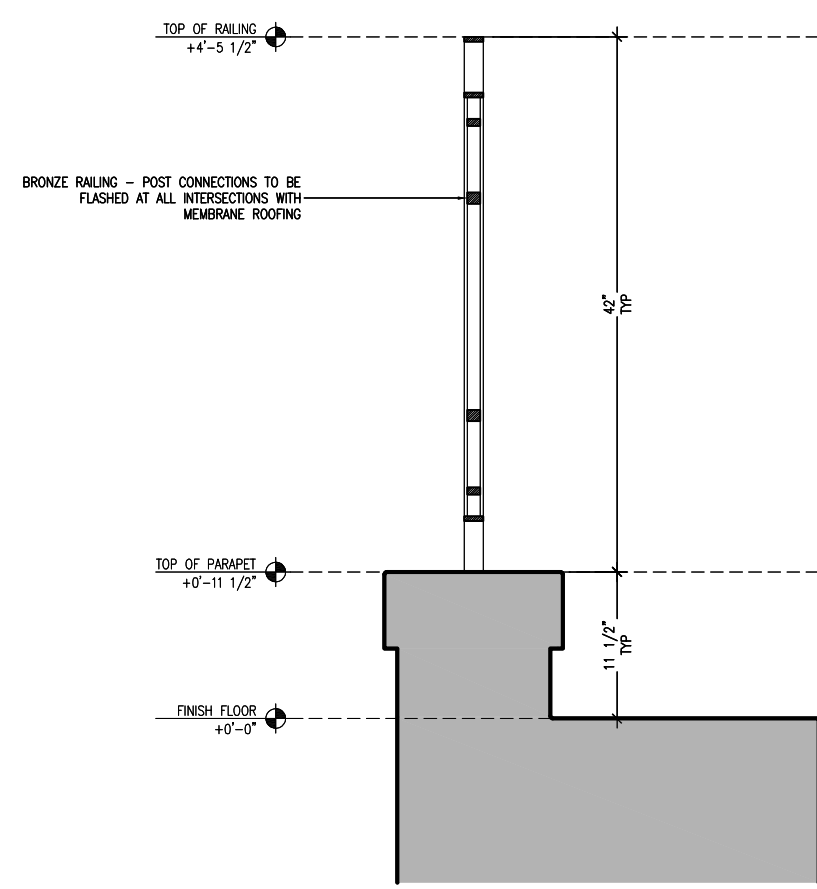
APPENDIX



PROPOSED ELEVATION



HISTORIC RAILING DESIGN



PROPOSED SECTOIN

