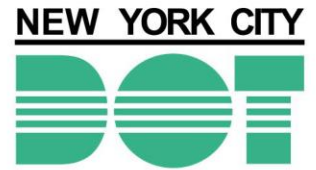


# Promenade over FDR East 81st St-East 90th St

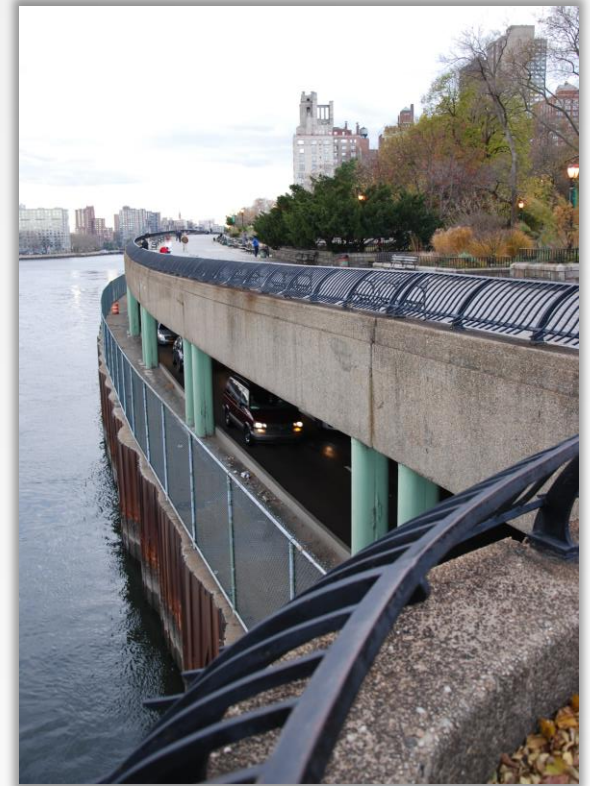
*Borough of Manhattan*



## CB 8 Transportation and Parks Committees Project Briefing June 10, 2021



- Project Overview and Challenges
- State of Good Repair Scope of Work
- Construction Impacts Monitoring & Mitigation
- Project Schedule and Cost
- Community Outreach





- Working at Promenade Level:
  - Proximity of work to private residences
  - Maintaining pedestrian use of the Promenade
  - Mitigating construction noise and dust
- Repairs at Roadway Level Below the Promenade:
  - Majority of work needs to be performed overnight
  - Limited space is available in work zone
  - Limited working hours permitted on FDR Drive roadway
  - Working near residences from E 81<sup>st</sup> St to E 84<sup>th</sup> St
  - Mitigating construction noise

# Project Limits

4



Upper Level Promenade/John Finley Walk  
(NYC) – Original 1939 Structure



Pedestrian Ramp  
(NYC DDC)  
Recently Constructed

Lower Level Roadway  
(NB FDR - NYSDOT)  
Reconstructed in 1985

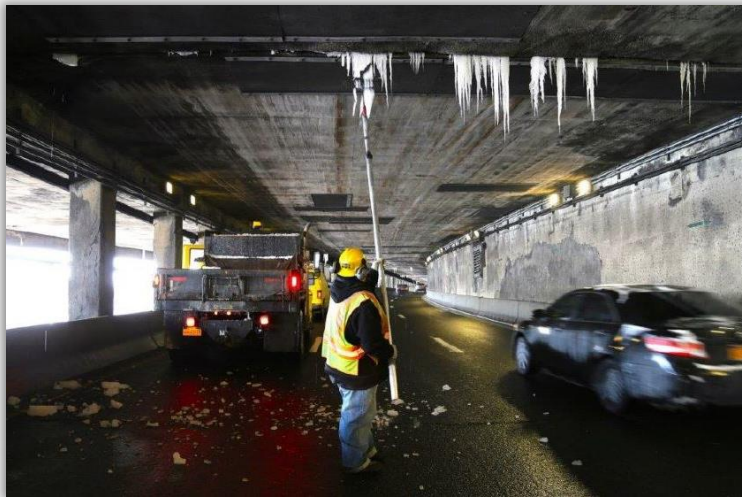
Mezzanine Level Roadway  
(SB FDR - NYSDOT)  
Reconstructed in 1990



# Existing Promenade Structural Conditions

6

- Promenade is 80 years old without any major rehabilitation
- Field inspection indicated that large portions of the structure are in poor condition (spalls, hollow areas, etc.)
- Joint leakage and overhead concrete spalling above roadway is a particular concern

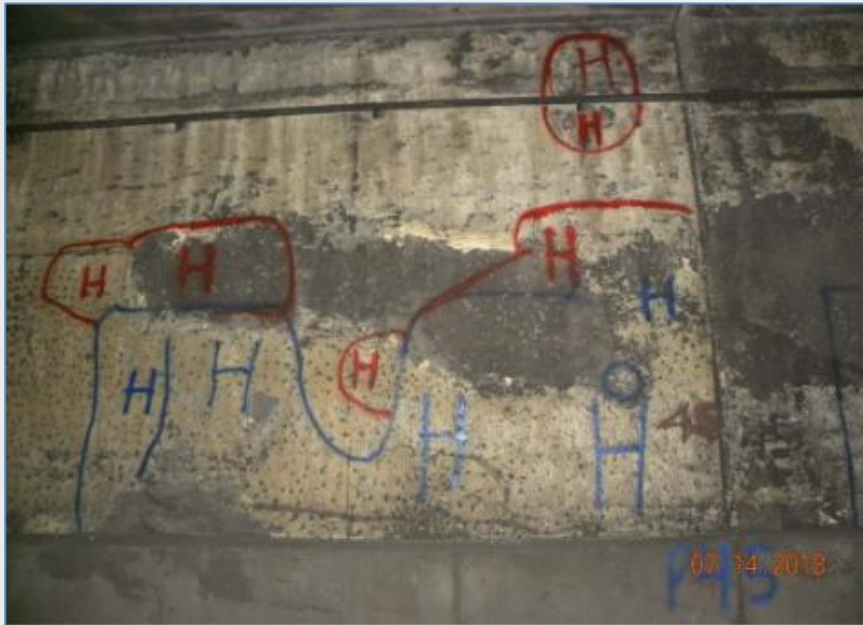


- Focused Localized Repair on the Underside of Deck, Girders and Walls
- Replace Expansion Joints
  - Provide an ADA-Compliant Detail for Joints in Walkway
- Replace All Pavers Including Waterproofing
- Cleaning and Localized Repair of Drainage System
- Repair of Spalls on Parapet at Railing Base
- Full Replacement of Pedestrian Railing
- Install ADA ramp at 83<sup>rd</sup> Street
- Removal of Gates and Transverse Fence at Two Locations
- Replace Existing Benches
- Replace Light Poles

# Localized Structural Repairs

8

- Focused localized repair of specific conditions on underside of deck, walls, and concrete girders
- Work requires traffic lane restrictions at southbound and northbound roadways





# Promenade Level – Joints, Pavers & Drainage

9



- Replace leaking joints to slow deterioration and prevent ice formation over roadways
- Replace pavers
  - Mitigate ponding
  - Eliminate uneven walking surfaces
- Clean drainage system
- Localized replacement of drainage inlets

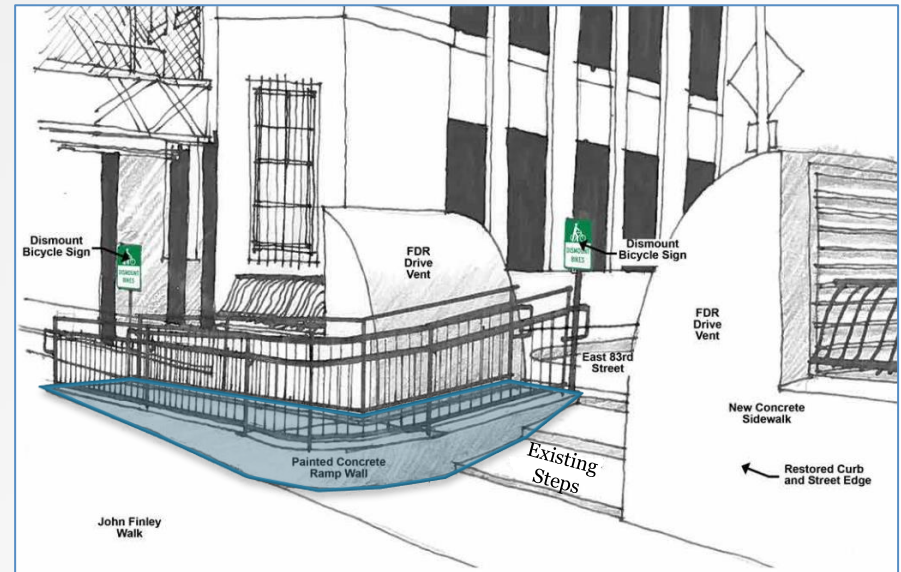


# ADA-Compliant Upgrades

10



- New expansion joints to include ADA-Compliant cover plates
- Paver replacement will eliminate uneven walking surfaces
- Installation of ADA ramp at East 83<sup>rd</sup> Street



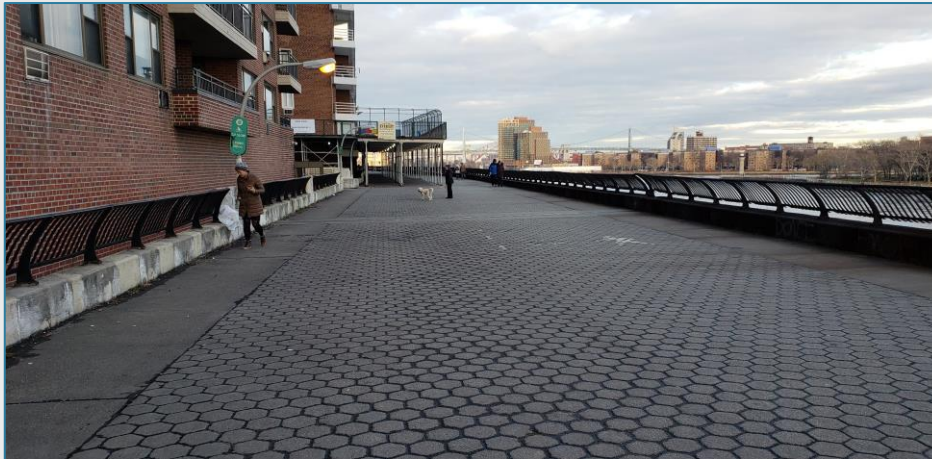


# Promenade Level – Pedestrian Railing Replacement 11

- Railing does not meet current safety standards
- New railing to be of similar style as existing but will meet current standards for cyclists and pedestrians
- New railing will be 3'-6" above top of curb/parapet (4'-6" minimum total height)
- Concrete curb/parapet to be repaired as needed



Searail (East Fascia) 3'-10" Total Height



General View Looking North



Railing (West Fascia) 3'-10" Total Height

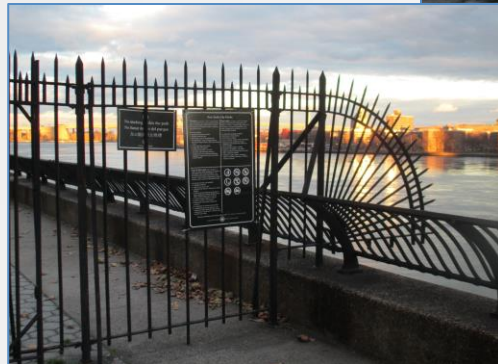
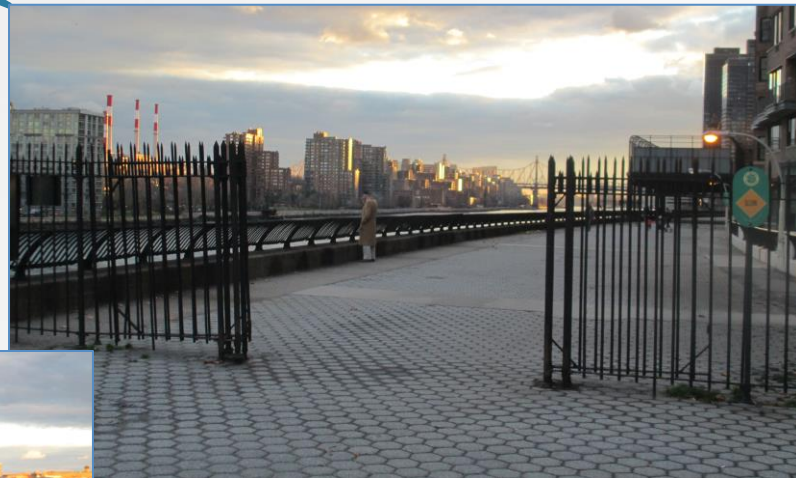


# Promenade Level – Existing Gate Removals

12



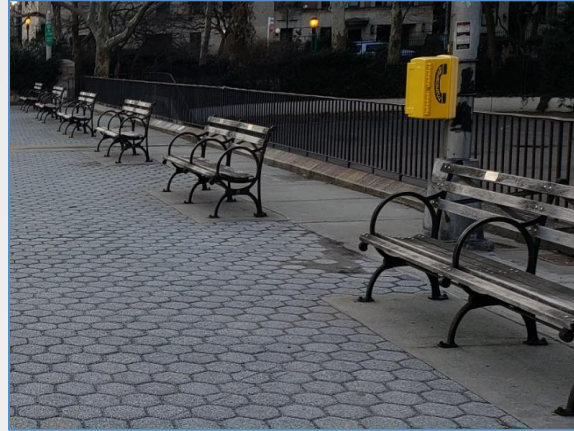
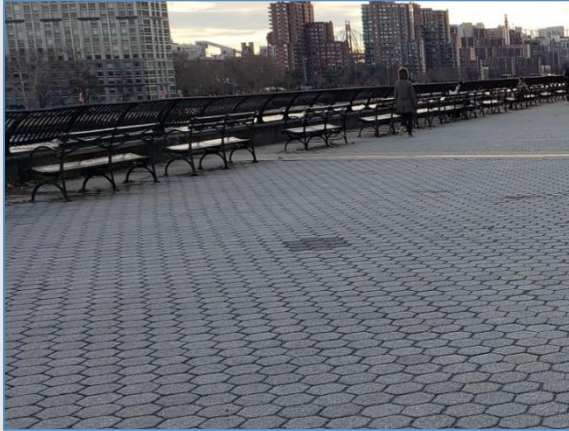
Remove Deteriorated Transverse Fence and Gate at Two Locations



# Promenade Level – Bench & Lighting Replacement

13

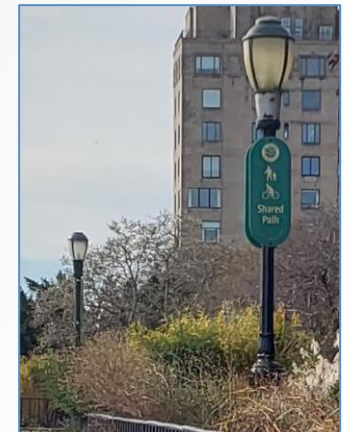
## Replace Benches



## Replace Lighting



South of 84<sup>th</sup> St

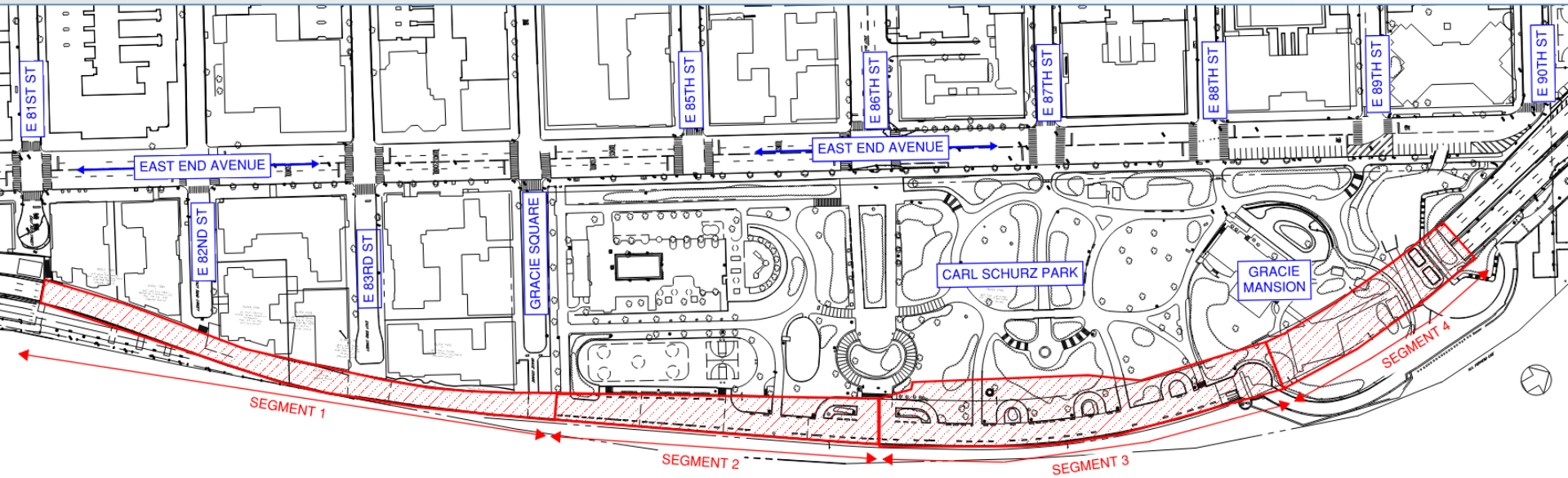


North of 84<sup>th</sup> St





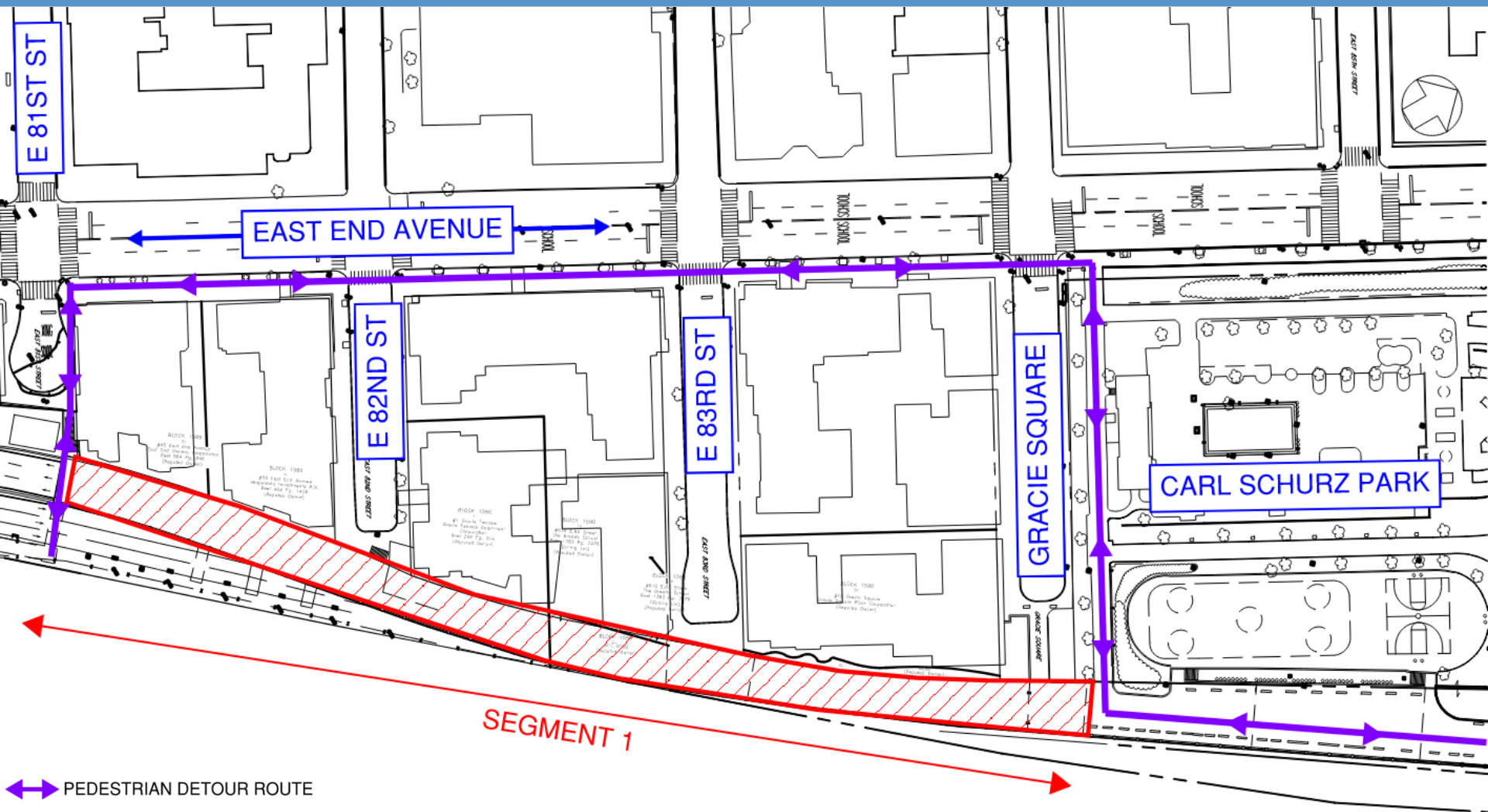
# Promenade Level Preliminary Work Zone Segments 14





# Park Pedestrian Access – Segment 1

15



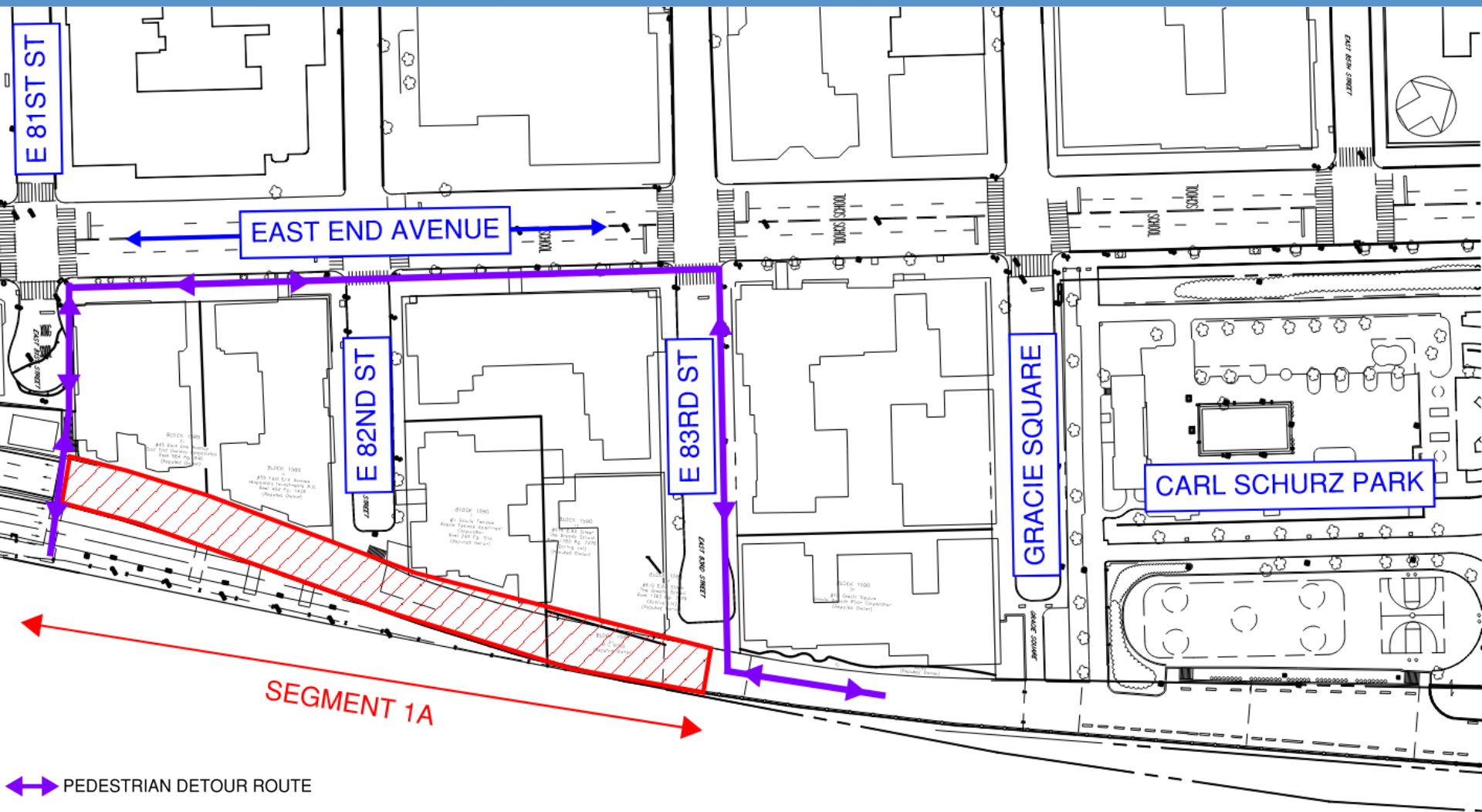
Approximate Duration: 8-10 Months



Promenade over FDR East 81<sup>st</sup> St – East 90<sup>th</sup> St

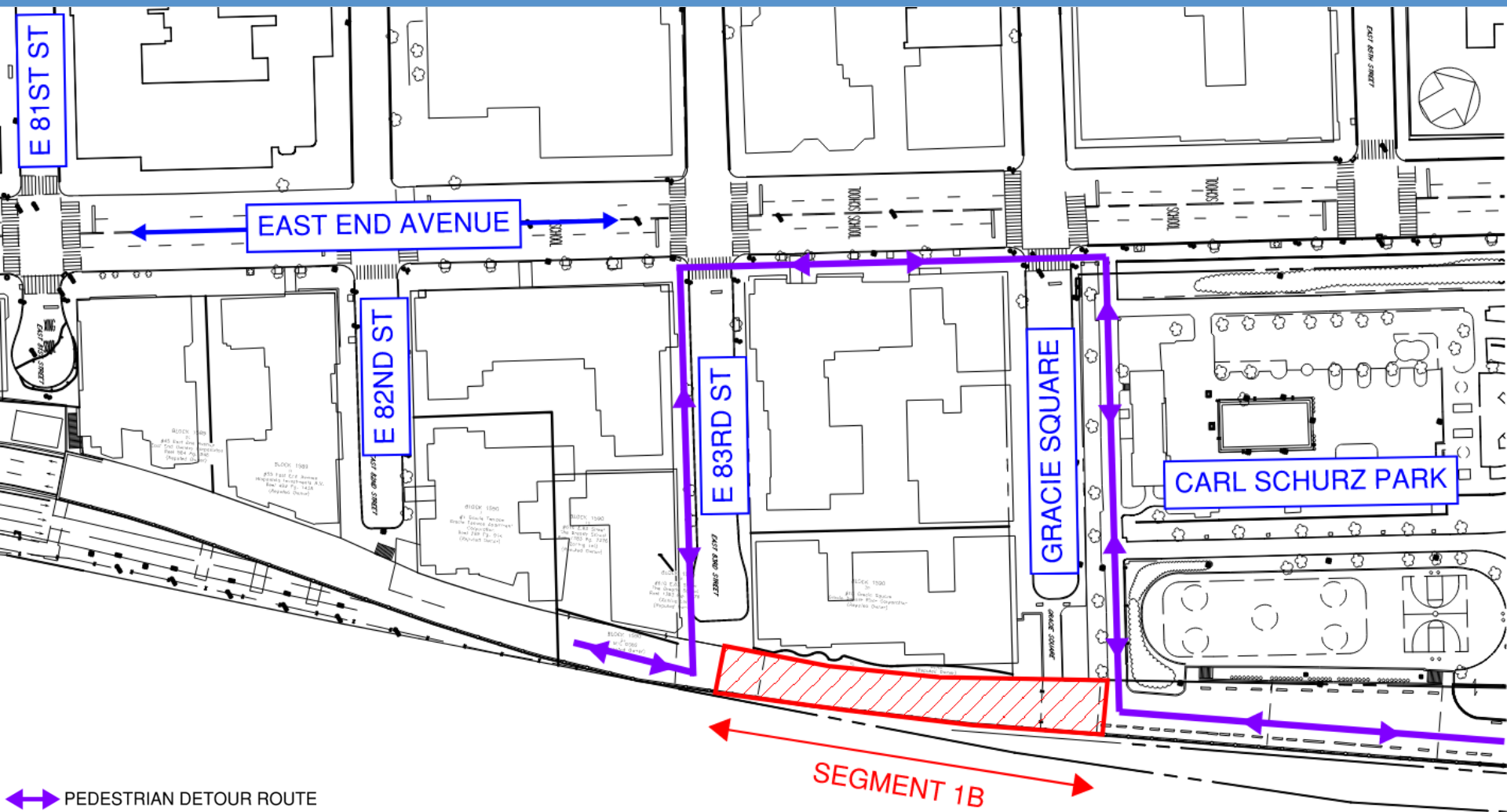
# Park Pedestrian Access – Optional Segment 1A

16



# Park Pedestrian Access – Optional Segment 1B

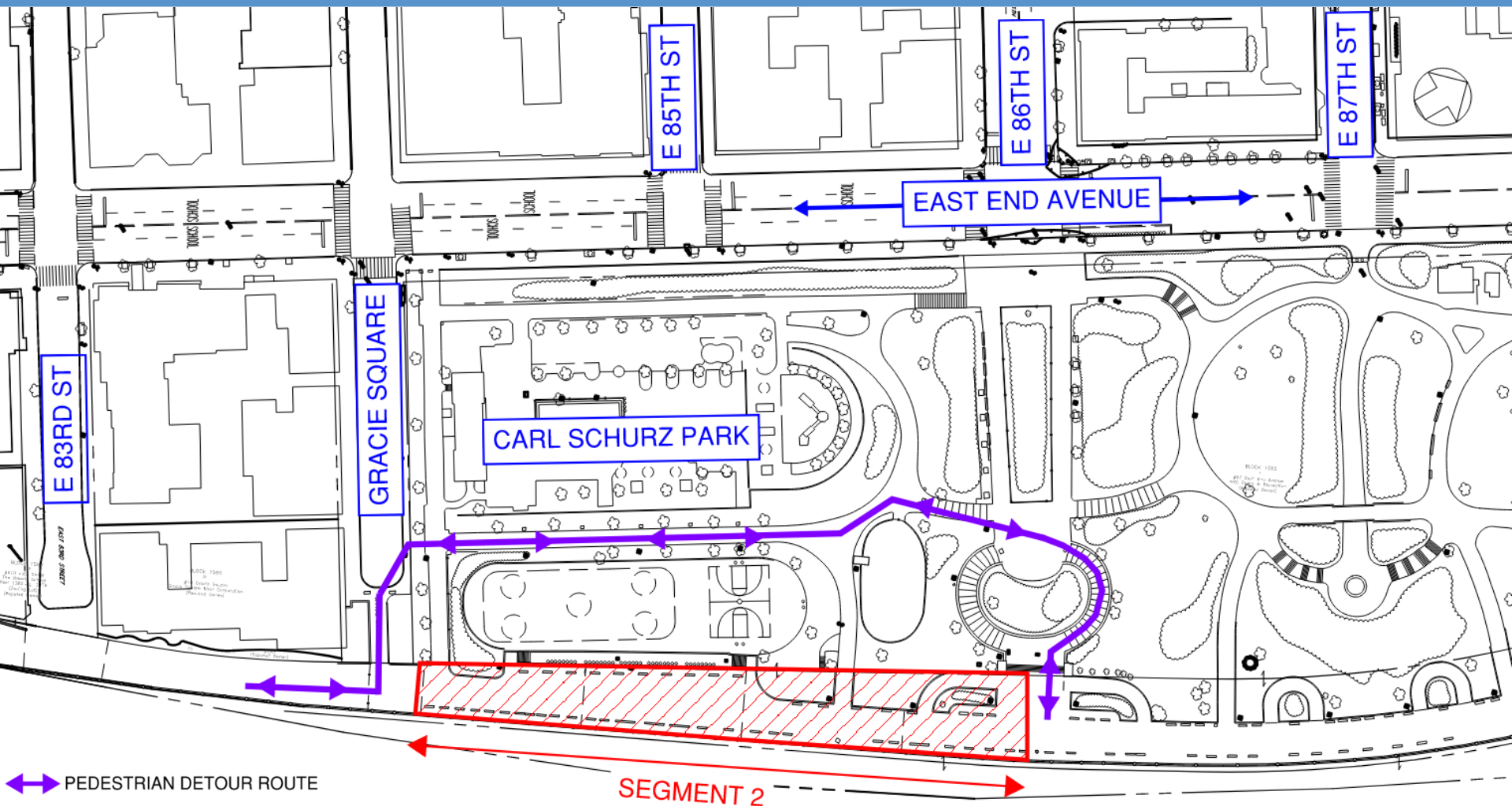
17





# Park Pedestrian Access – Segment 2

18



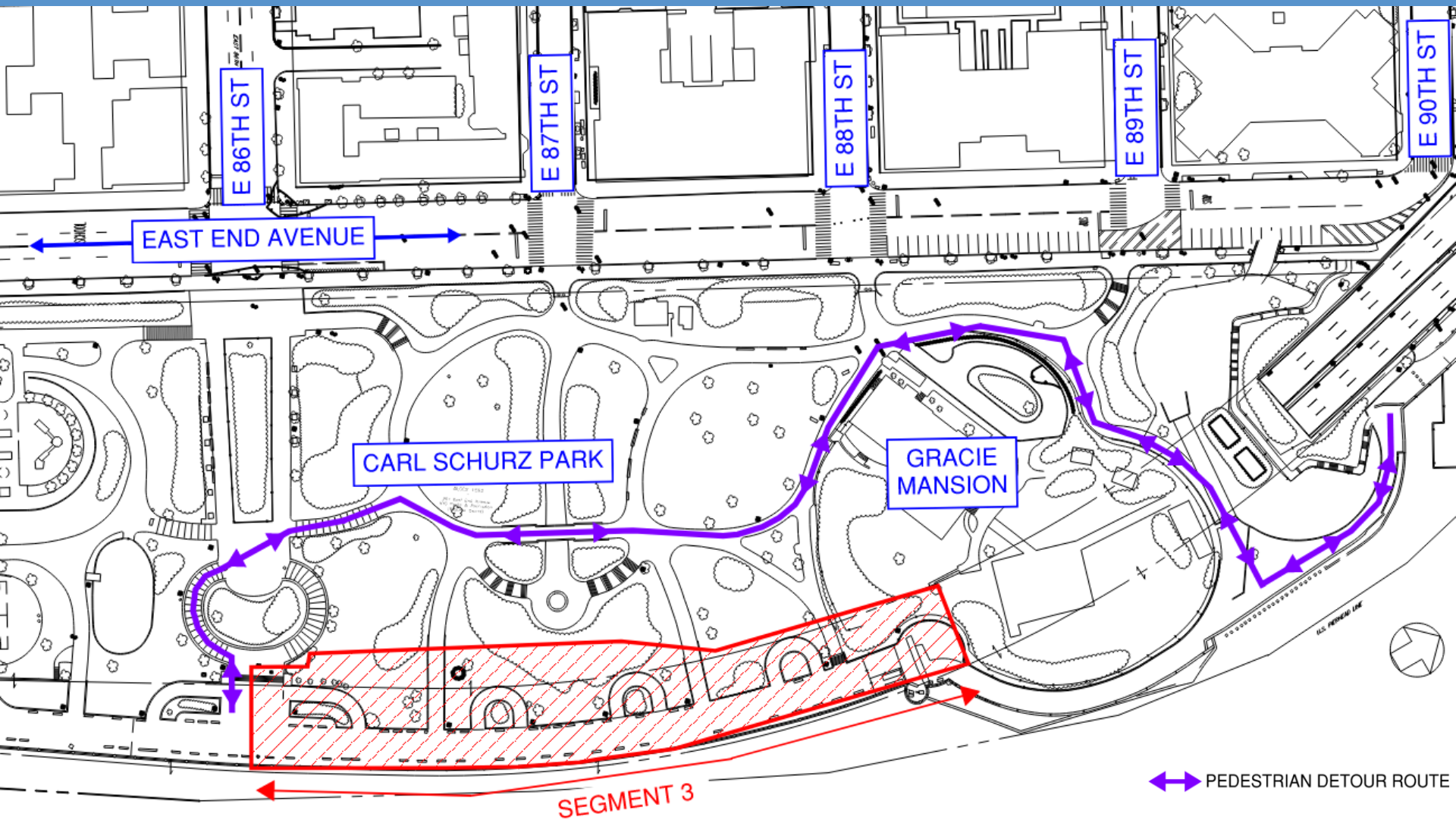
Approximate Duration: 7-9 Months



Promenade over FDR East 81<sup>st</sup> St – East 90<sup>th</sup> St

# Park Pedestrian Access – Segment 3

19



PEDESTRIAN DETOUR ROUTE

SEGMENT 3

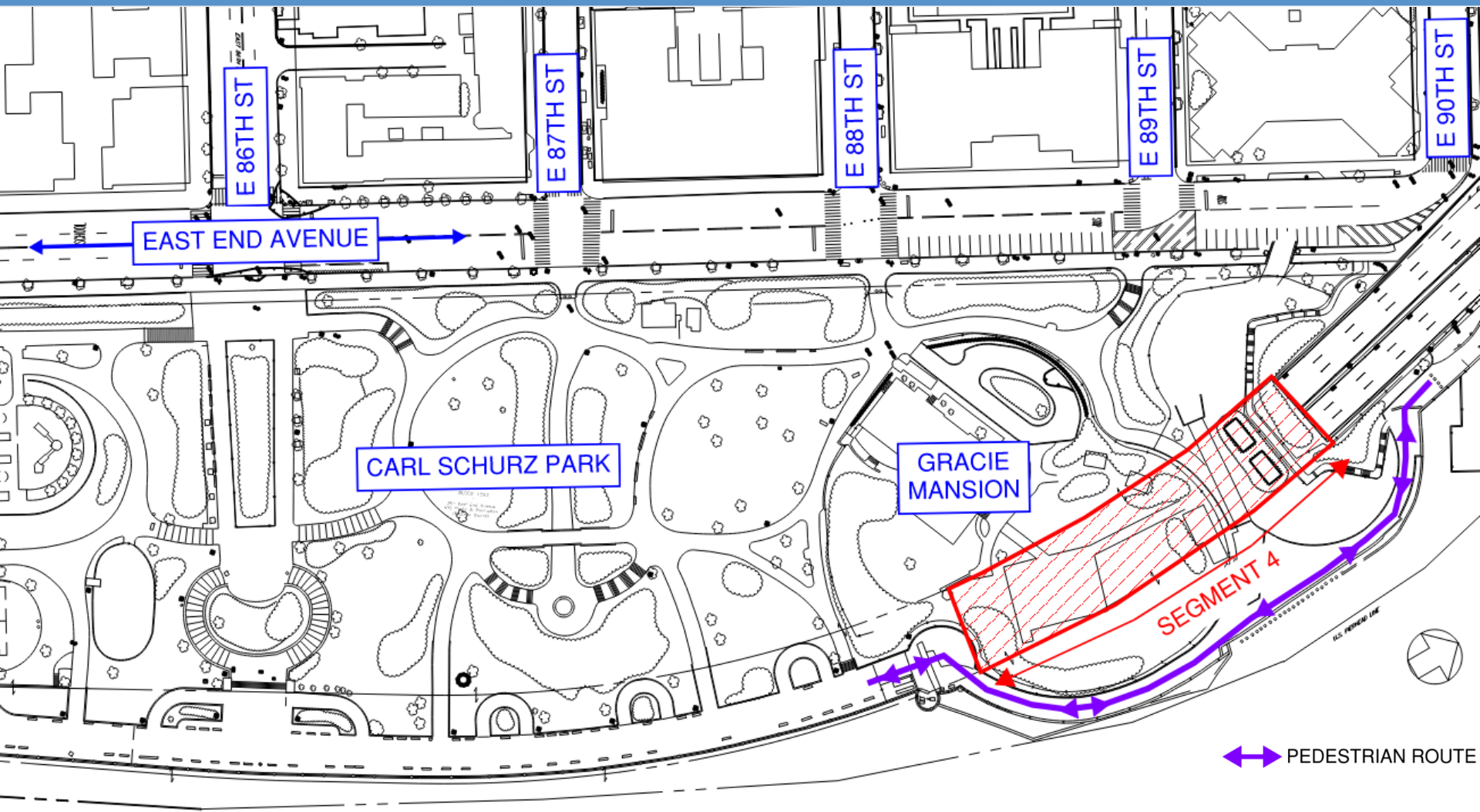
Approximate Duration: 8-10 Months



Promenade over FDR East 81<sup>st</sup> St – East 90<sup>th</sup> St

# Park Pedestrian Access – Segment 4

20



PEDESTRIAN ROUTE

Approximate Duration: 3-5 Months

Note: Segment 4 may be done concurrently with other segments

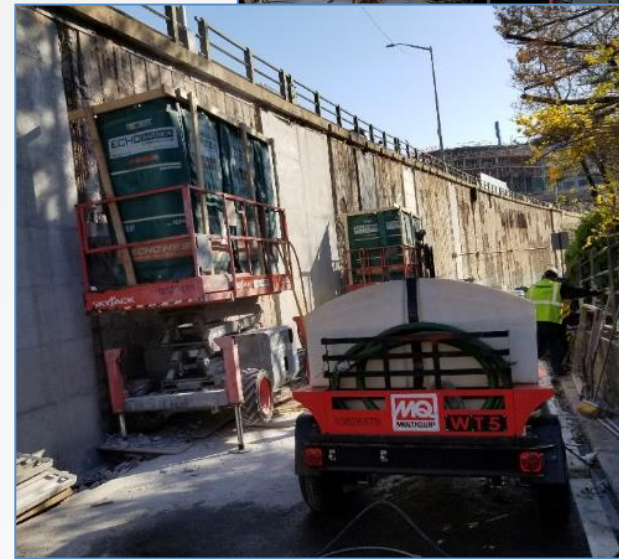
Promenade over FDR East 81<sup>st</sup> St – East 90<sup>th</sup> St



# Noise Monitoring & Mitigation


21

- Noise and environmental air monitoring by third-party contractor
- Sound blankets and barriers to enclose noisy equipment
- Hand-Held Chipping Hammers
- Both high frequency and low frequency (vibration) noise will be mitigated with these techniques



- Wetting Techniques for Dust Control
- Hand-Held Chipping Hammers





- Final Design – December 2021

- Bid Opening – December 2023

- Construction Begins – June 2024

- Anticipated Construction Completion – June 2027

- Anticipated Investment for State of Good Repair: \$70M - \$80M



# Community Outreach During Construction

24

- A full-time community liaison will be assigned to coordinate with:
  - Community Board 8
  - Elected Officials
  - First Responders
  - NYCDPR
- Communications to be done via:
  - Public Information Meetings
  - Newsletters (Digital & Flyers)
- Contact database will be provided to the community



# Thank You!

25

## Questions?

