

# PROPOSING WORK

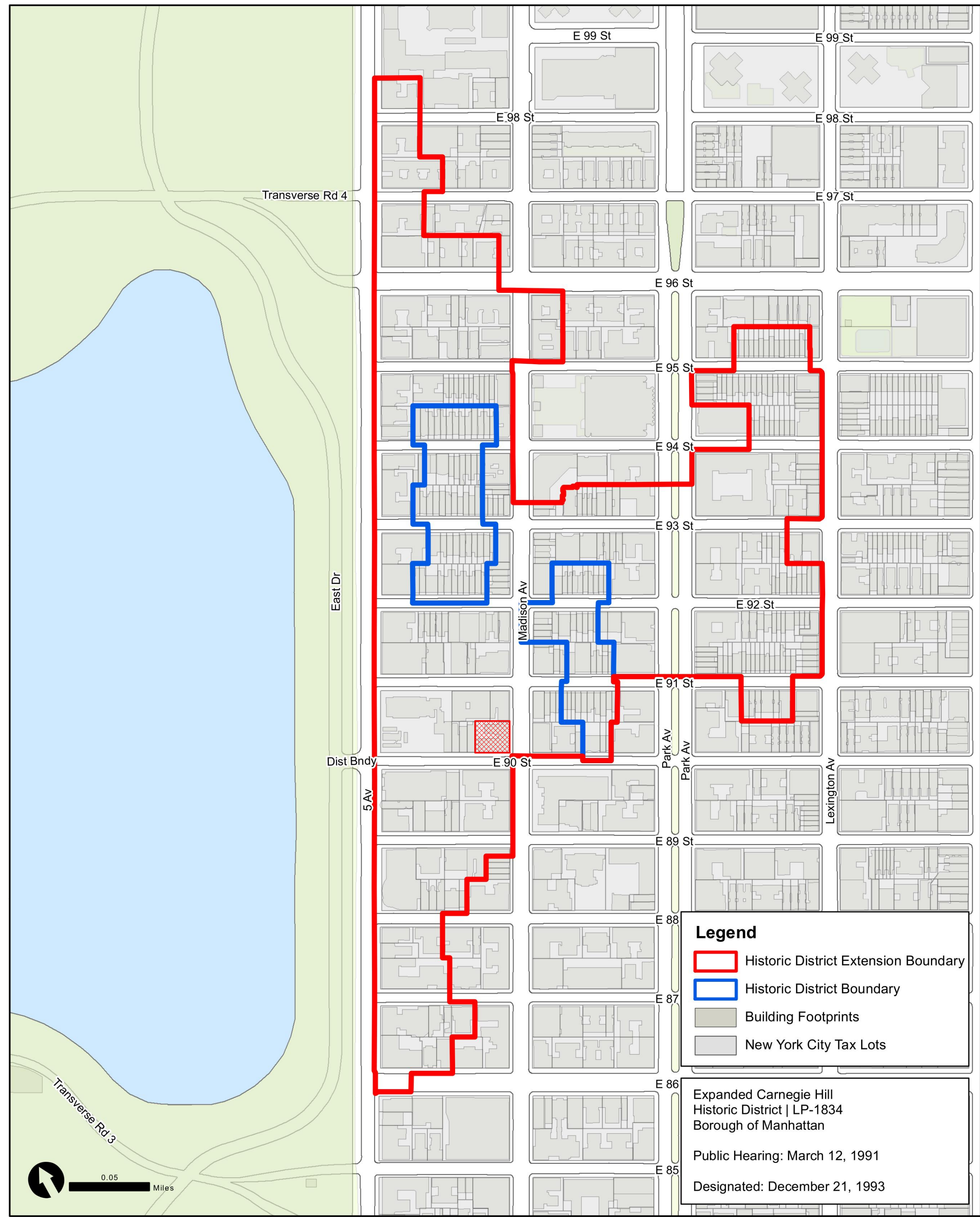
15 EAST 91 STREET AP. #4A  
MANHATTAN, N.Y., 10128

"ARINNITY" & "ENGINEERING PROFESSIONAL SERVICE"  
ARINNITY.COM  
ARINNITY@GMAIL.COM  
T: 718.450.1637

RENOVATION OF APT. #4A.  
RESTORATION OF PREEXISTING  
EXTERIOR TERRACE.

BLOCK: 1503, LOT: 14

Expanded Carnegie Hill Historic District | LP-1834







1980 (MUNICIPAL ARCHIVES)



1993 (LPC DESIGNATION PHOTO)



2021









WEST WINDOW SHOWING NO VISIBILITY OF WALL MOCKUP



EAST WINDOW SHOWING NO VISIBILITY OF WALL MOCKUP



15 EAST 91ST STREET TERRACE & PLAN ALTERATIONS



VIEW FROM CORNER EAST 91 ST. / MADISON AV. (SOUTHEAST)



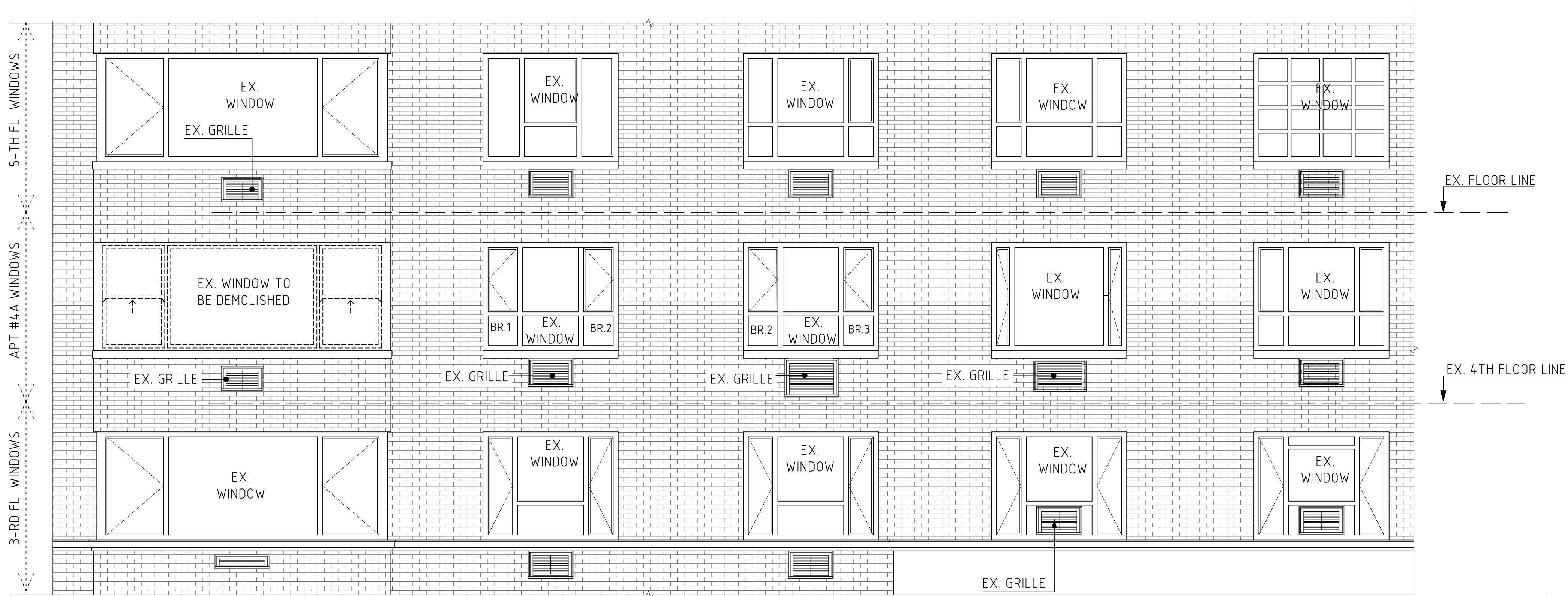
VIEW TO NEIGHBOR APARTMENT



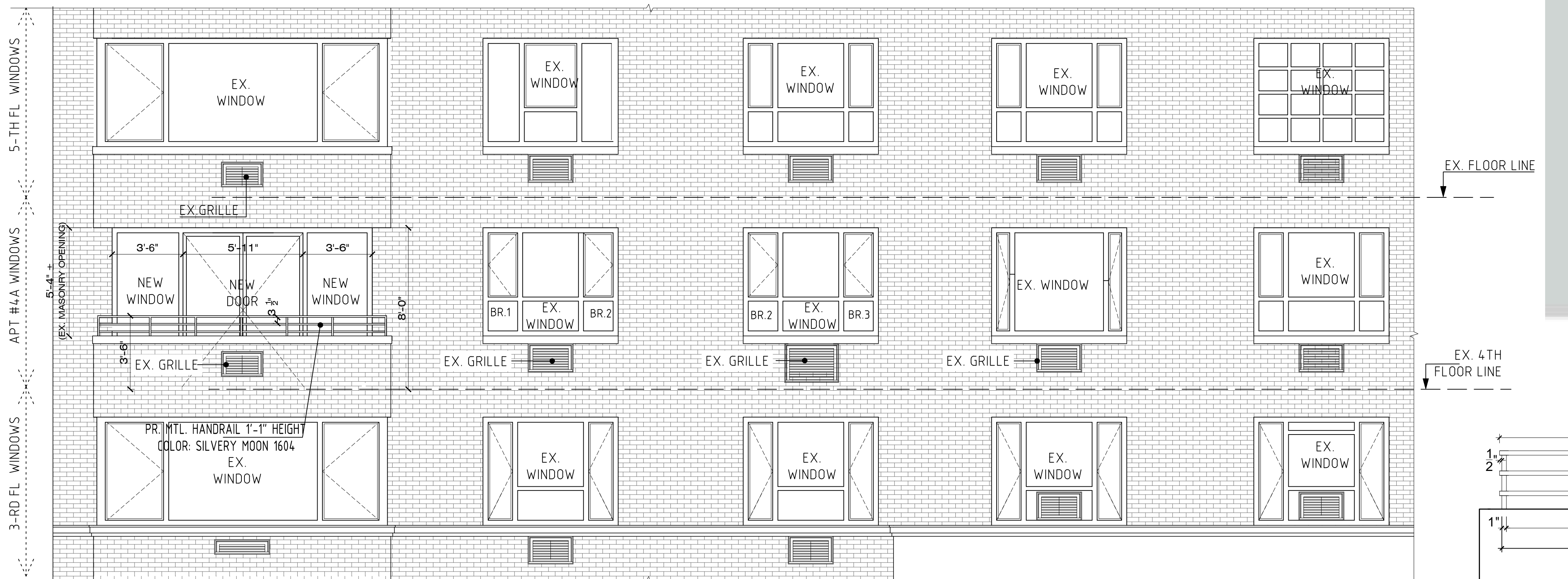




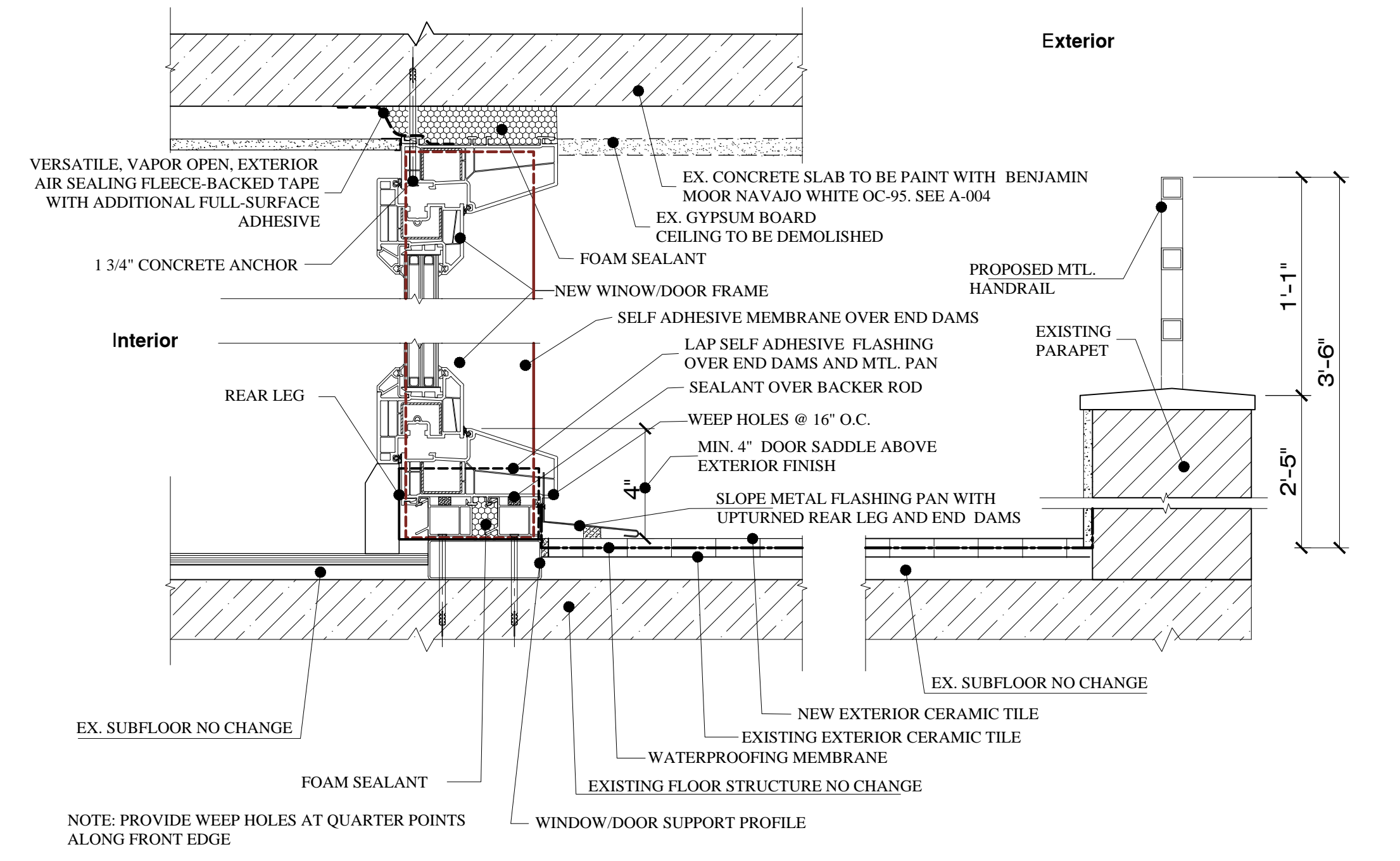




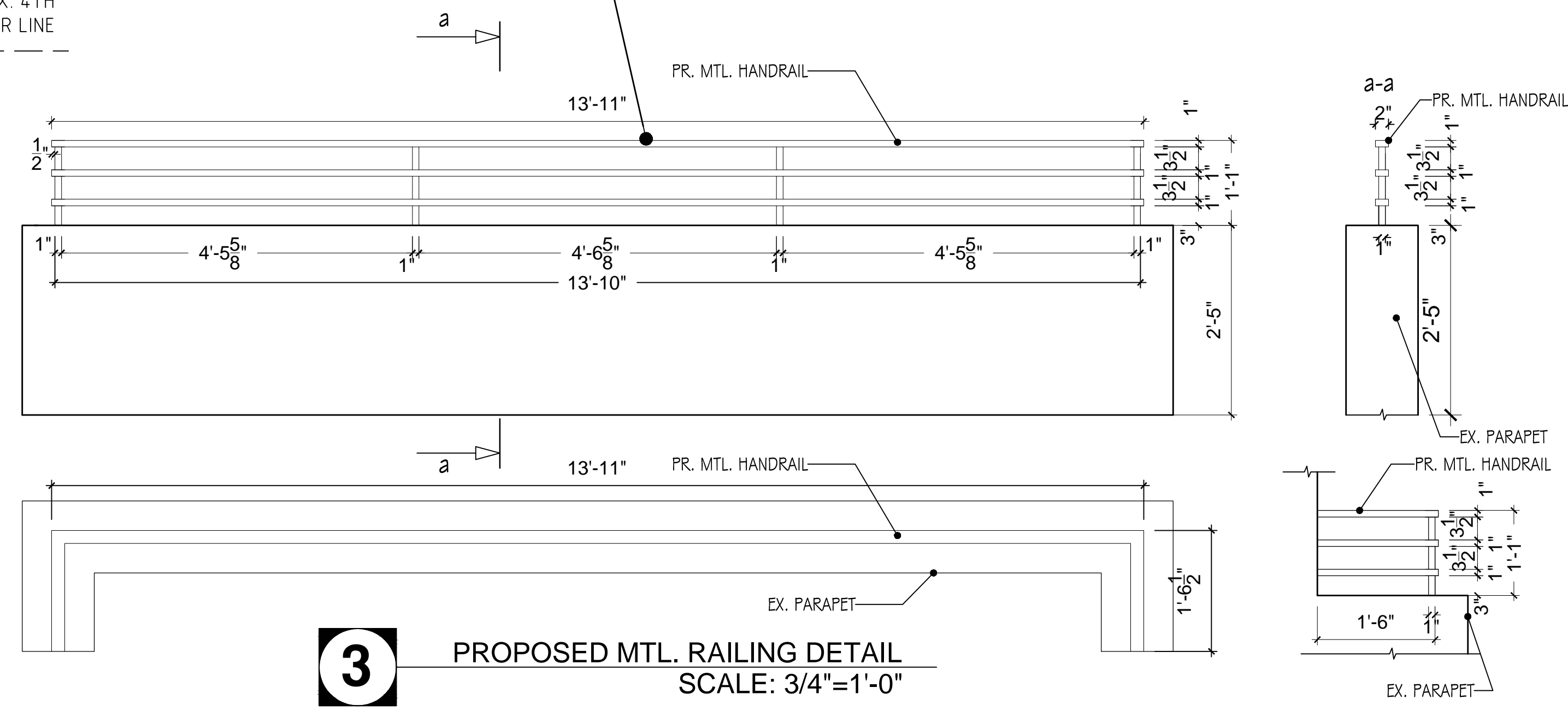
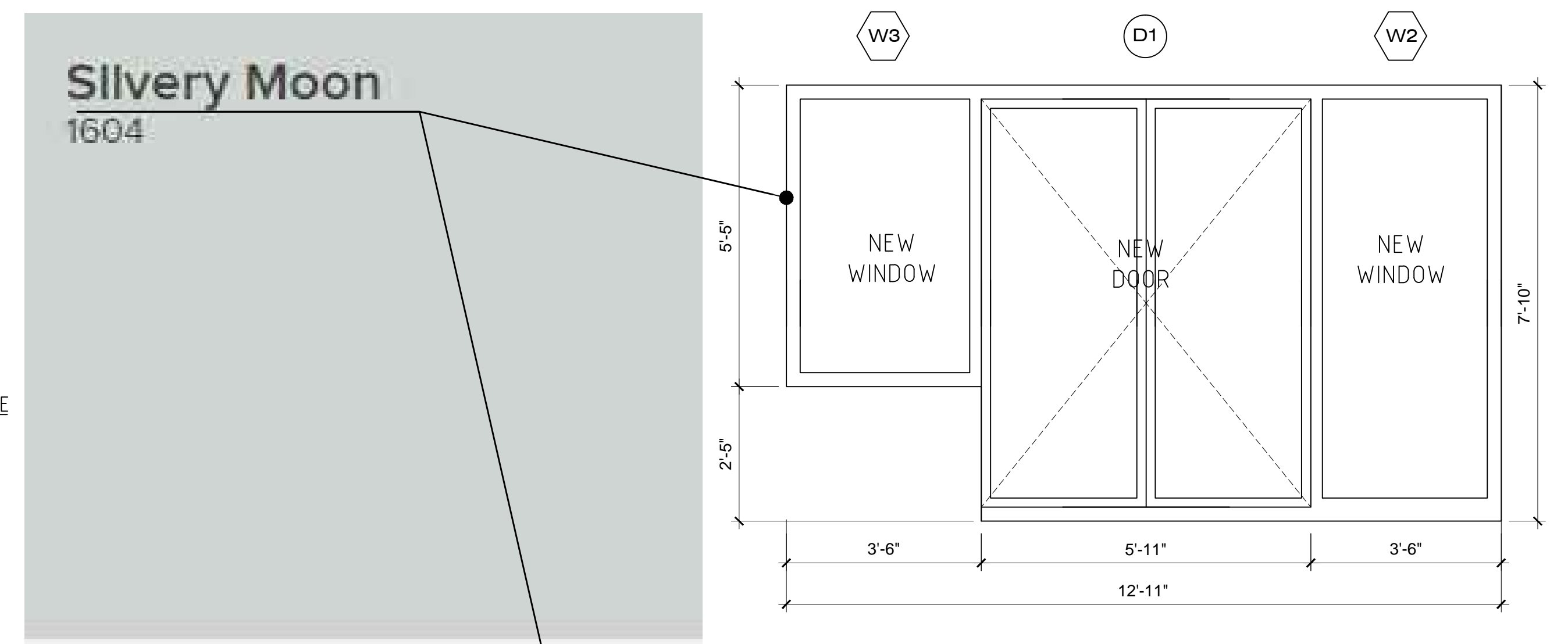
**1** EXISTING EXTERIOR ELEVATION (EAST 91 ST.) SCALE: 3/16"=1'-0"



**2** PROPOSED EXTERIOR ELEVATION (EAST 91 ST.) SCALE: 3/16"=1'-0"

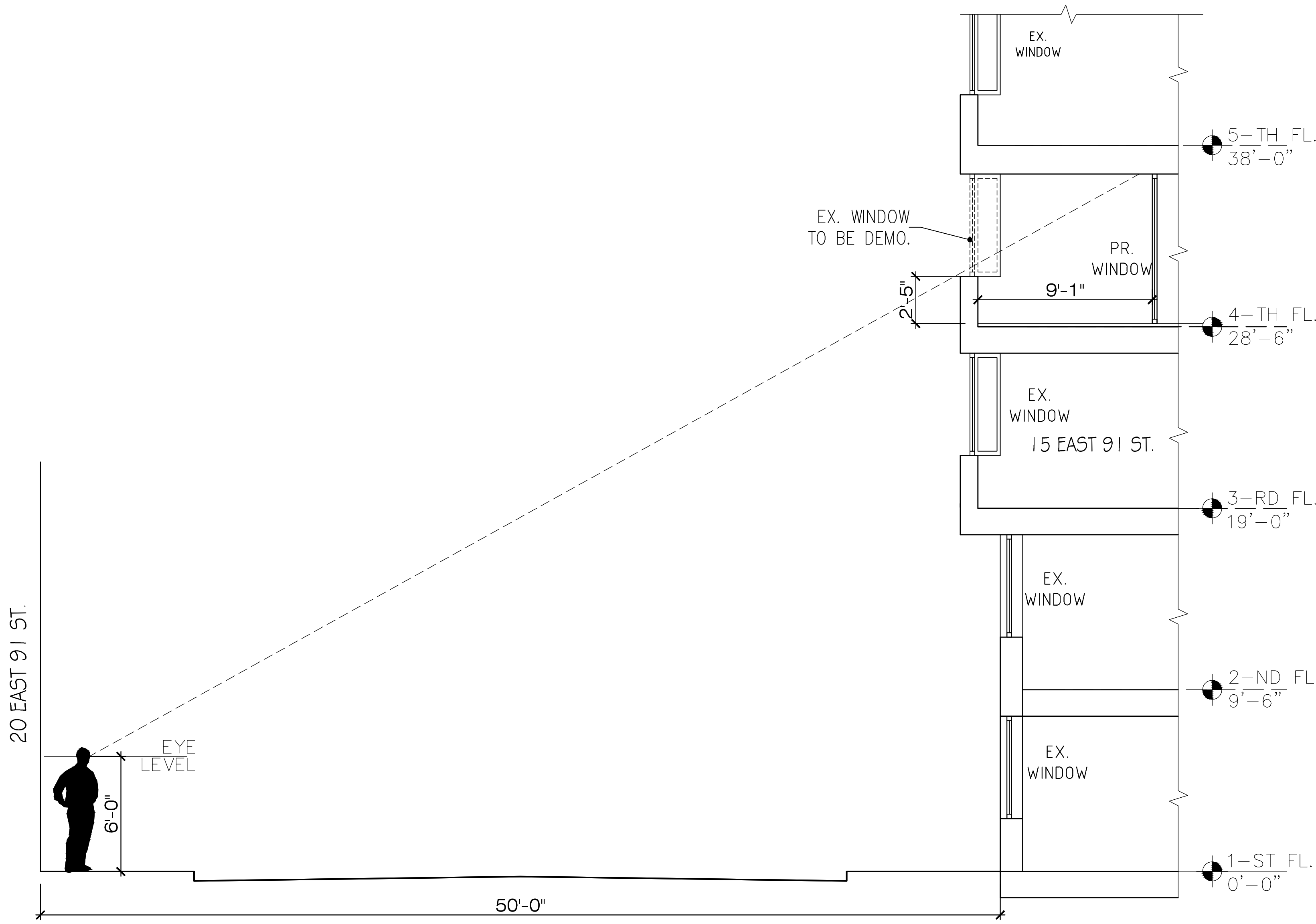


**4** DOOR & WINDOW DETAIL SCALE: N.T.S

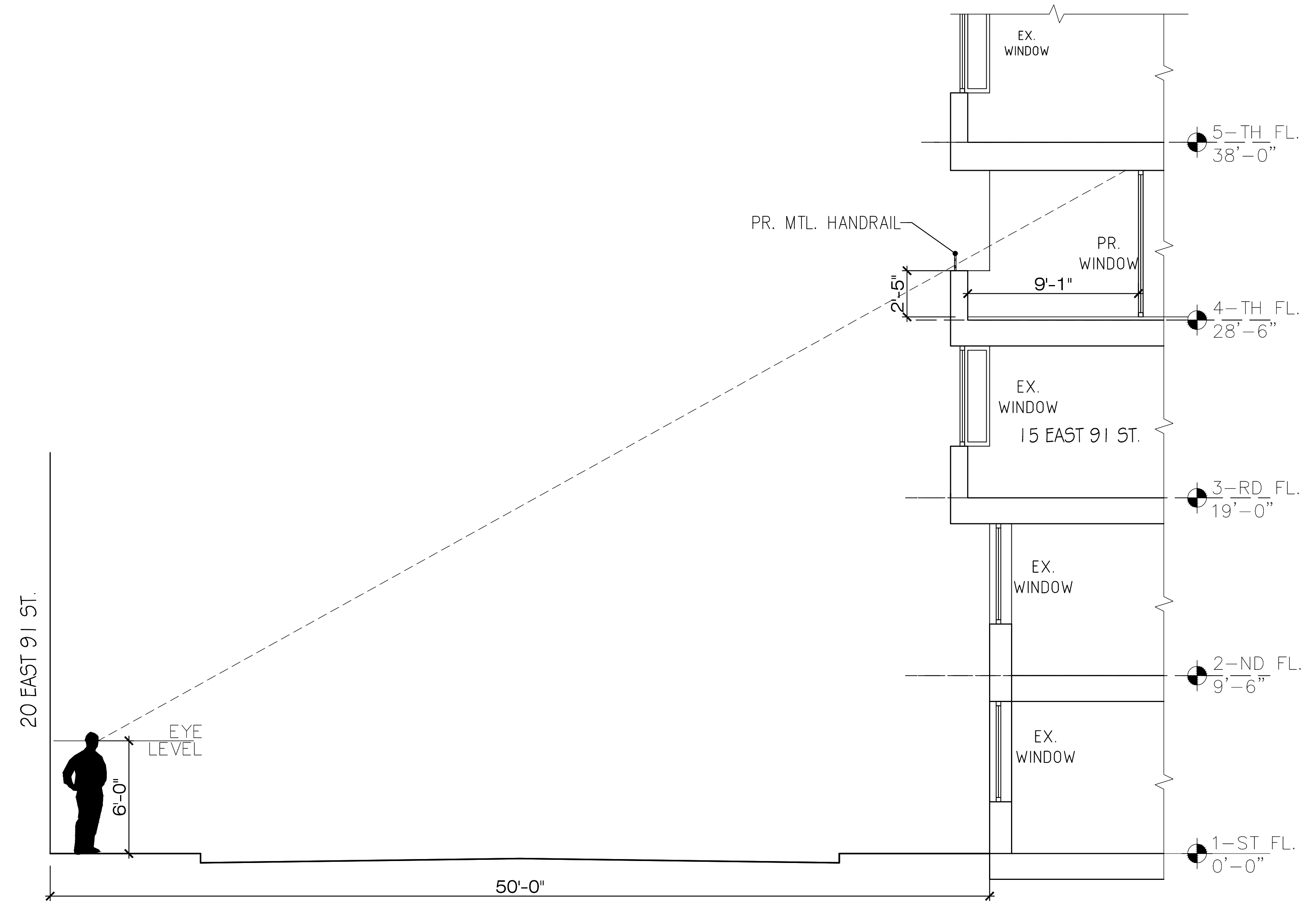


**3** PROPOSED MTL. RAILING DETAIL SCALE: 3/4"=1'-0"





**1** EXISTING SECTION  
(EAST 91 ST.) SCALE: 1/4"=1'-0"



**2** PROPOSED SECTION  
(EAST 91 ST.) SCALE: 1/4"=1'-0"





15 EAST 91ST STREET TERRACE & PLAN ALTERATIONS

06.03.21

SLIDE 10





15 EAST 91ST STREET TERRACE & PLAN ALTERATIONS

06.03.21

SLIDE 11