

***Statements of Community  
District Needs  
and  
Community Board  
Budget Requests***

Fiscal Year  
2022

**Manhattan  
Community District  
8**

Published by:  
**NYC**  
**PLANNING**  
February 2021

## INTRODUCTION

The annual Statements of Community District Needs (CD Needs Statements) and Community Board Budget Requests (Budget Requests) are Charter mandates that form an integral part of the City's budget process. Together, they are intended to support communities in their ongoing consultations with city agencies, elected officials and other key stakeholders and influence more informed decision making on a broad range of local planning and budget priorities. This report also provides a valuable public resource for neighborhood planning and research purposes, and may be used by a variety of audiences seeking information about New York City's diverse communities.

## HOW TO USE THIS REPORT

This report represents the Statement of Community District Needs and Community Board Budget Requests for Fiscal Year (FY) 2022. This report contains the formatted but otherwise unedited content provided by the community board, collected through an online form available to community boards from August to November, 2020.

Community boards may provide substantive supplemental information together with their Statements and Budget Requests. This supporting material can be accessed by clicking on the links provided in the document or by copying and pasting them into a web browser, such as Chrome, Safari or Firefox.

If you have questions about this report or suggestions for changes please contact:

[CDNEEDS\\_DL@planning.nyc.gov](mailto:CDNEEDS_DL@planning.nyc.gov)

This report is broadly structured as follows:

### 1. Overarching Community District Needs

Sections 1 – 4 provide an overview of the community district and the top three pressing issues affecting this district overall as identified by the community board. Any narrative provided by the board supporting their selection of their top three pressing issues is included.

### 2. Policy Area-Specific District Needs

Section 5 is organized by seven distinct policy areas aligned with the service and program areas of city agencies. For each policy area, community boards selected the most important issue for their districts and could provide a supporting narrative. The policy area section also includes any agency-specific needs and a list of relevant budget requests submitted by the community board. If the community board submitted additional information outside of a specific policy area, it may be found in Section 6.

### 3. Community Board Budget Requests

The final section includes the two types of budget requests submitted to the City for the FY22 budget cycle; one list for capital and another for expense budget requests. For each budget request, community boards were able to provide a priority number, explanation, location, and supporters. OMB remains the definitive source on budget requests submitted to city agencies.

### Disclaimer

This report represents the Statements of Community District Needs and Community Board Budget Requests of this Community District for Fiscal Year 2022. This report contains the formatted but otherwise unedited content provided by the community board.

*Budget Requests:* Listed for informational purposes only. OMB remains the definitive source on budget requests and budget request responses.

*Budget Priorities:* Priority numbers apply to expense and capital Budget requests from all policy areas. A complete list of expense and capital budget requests by this Board sorted by priority can be found in Section 7 of this document.

*Supporting Materials:* Some community boards provided substantive supplemental information. This supportive material can be accessed by clicking on the links provided in the document or by copying and pasting the links provided in the Appendix into a browser.

# TABLE OF CONTENTS

Introduction

1. Community Board Information

2. Community District Profile and Land Use Map

3. Overview of Community District

4. Top Three Pressing Issues Overall

5. Summary of Community District Needs and Budget Requests

Health Care and Human Services

Youth, Education and Child Welfare

Public Safety and Emergency Services

Core Infrastructure, City Services and Resiliency

Housing, Economic Development and Land Use

Transportation

Parks, Cultural and Other Community Facilities

6. Other Budget Requests

7. Summary of Prioritized Budget Requests

# 1. COMMUNITY BOARD INFORMATION

## Manhattan Community Board 8

Address: 505 Park Avenue, Suite 620  
Phone: (212) 758-4340  
Email:  
Website: [www.cb8m.com](http://www.cb8m.com)

Chair: Alida Camp  
District Manager: Will Brightbill

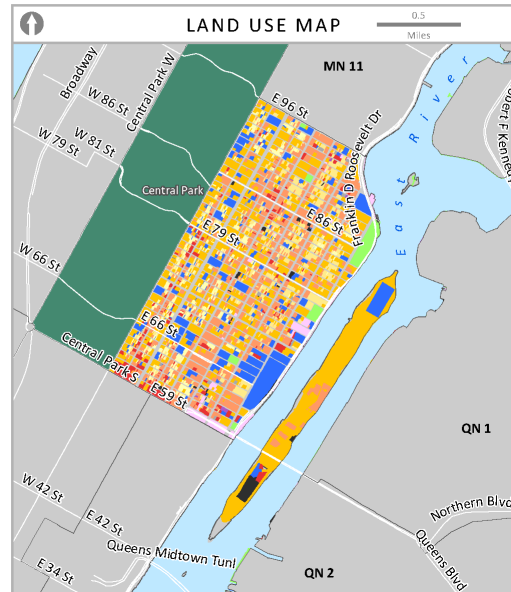
## 2. COMMUNITY DISTRICT PROFILE AND LAND USE MAP

# Manhattan Community District 8

See MN 8's profile online at  
communityprofiles.planning.nyc.gov

**Neighborhoods<sup>1</sup>:** Carnegie Hill, Lenox Hill, Roosevelt Island, Upper East Side, Yorkville

POPULATION & DENSITY		
2000 <sup>2</sup>	2010 <sup>3</sup>	2000-2010
217,063	219,920	+1%
2014-2018 Estimate <sup>4</sup>		215,449
Square Miles		2
Population Density		109,960/sq mi



### COMMUNITY BOARD PERSPECTIVES

Top 3 pressing issues identified by Manhattan Community Board 8 in 2020:

1. Affordable housing
2. Parks and open space
3. Schools

To learn more, please read Manhattan CD 8's Statement of Community District Needs and Community Board Budget Requests for Fiscal Year 2022.

Website: [www.cb8m.com/](http://www.cb8m.com/)  
Email: [info@cb8m.com](mailto:info@cb8m.com)

Land Use Category	# Lots	% Lot Area
1 & 2 Family Bldgs	1,053	6%
Multifamily Walk-up	1,185	9%
Multifamily Elevator	952	37%
Mixed Use	1,591	23%
Commercial	259	4%
Industrial	11	0%
Transportation/Utility	42	2%
Public/Institutional	301	14%
Open Space	8	2%
Parking	27	1%
Vacant	72	1%
Other	19	0%

Map Source: PLUTO 20v8

### A Snapshot of Key Community Indicators

COMMUNITY ASSETS <sup>5</sup>		RENT BURDEN <sup>4</sup>		ACCESS TO PARKS <sup>6</sup>	
Public Schools	20	Manhattan CD 8 <b>33%</b> of households spend 35% or more of their income on rent	Manhattan 36%	Manhattan CD 8 <b>94%</b> of residents live within walking distance of a park or open space	Citywide Target 85%
Public Libraries	5		NYC 44%		
Hospitals and Clinics	40				
Parks	18				
Visit <a href="http://CapitalPlanning.nyc.gov">CapitalPlanning.nyc.gov</a> for more information					
MEAN COMMUTE TO WORK <sup>4</sup>		LIMITED ENGLISH PROFICIENCY <sup>4</sup>		CRIME RATE <sup>7</sup>	
Manhattan CD 8 <b>31</b> minutes	Manhattan 32* minutes	Manhattan CD 8 <b>5%</b> of residents 5 years or older have limited English proficiency	Manhattan 15%	Manhattan CD 8 <b>10.2</b> major felonies were reported per 1,000 residents in 2019	Manhattan 16.1
	NYC 41 minutes		NYC 23%		NYC 11
EDUCATIONAL ATTAINMENT <sup>4</sup>		UNEMPLOYMENT <sup>4</sup>		NYCgov POVERTY MEASURE <sup>8</sup>	
Manhattan CD 8 <b>81%</b> of residents 25 years or older have earned a bachelor's degree or higher	Manhattan 61%	Manhattan CD 8 <b>2%</b> of the civilian labor force was unemployed on average from 2014 to 2018	Manhattan 3.8%	Manhattan CD 8 <b>6%</b> of residents have incomes below the NYCgov poverty threshold	Manhattan 14%
	NYC 37%		NYC 4.4%		NYC 20%

<sup>1</sup>Neighborhoods may be in multiple districts. Names and boundaries not officially designated. <sup>2</sup>2000 US Census; <sup>3</sup>2010 US Census; <sup>4</sup>American Community Survey 2014-2018 5-Year Estimates, approximated by aggregating data from blocks and block-groups. When comparing CD estimates to Borough and City averages, due to survey sampling error values with an asterisk (\*) are not statistically significant differences. Visit the Community District Profiles tool online to find Margins of Error (MOEs) for all estimates. <sup>5</sup>NYC Dept of City Planning Facilities Database (2020); <sup>6</sup>NYC Dept of Parks and Recreation (DPR) (2019). DPR considers walking distance to be 1/4 mile for parks less than 8 acres, and 1/2 mile for larger parks and pools. <sup>7</sup>NYPD Complaint Data (2019); <sup>8</sup>2014-2018 NYCgov Poverty Measure by Public Use Microdata Area (PUMA). PUMAs are geographic approximations of community districts. This metric from the Mayor's Office for Economic Opportunity accounts for NYC's high cost of housing, as well as other costs of living and anti-poverty benefits.

# Manhattan Community District 8 - Land Use

- One & Two Family Buildings

MultiFamily Walkup Buildings

MultiFamily Elevator Buildings

Mixed Commercial/Residential Buildings
- Commercial/Office Buildings

Industrial/Manufacturing

Transportation/Utility

Public Facilities & Institutions
- Open Space

Parking Facilities

Vacant Land

All Others or No Data
- Community Districts

NYC

PLANNING

0

1,200

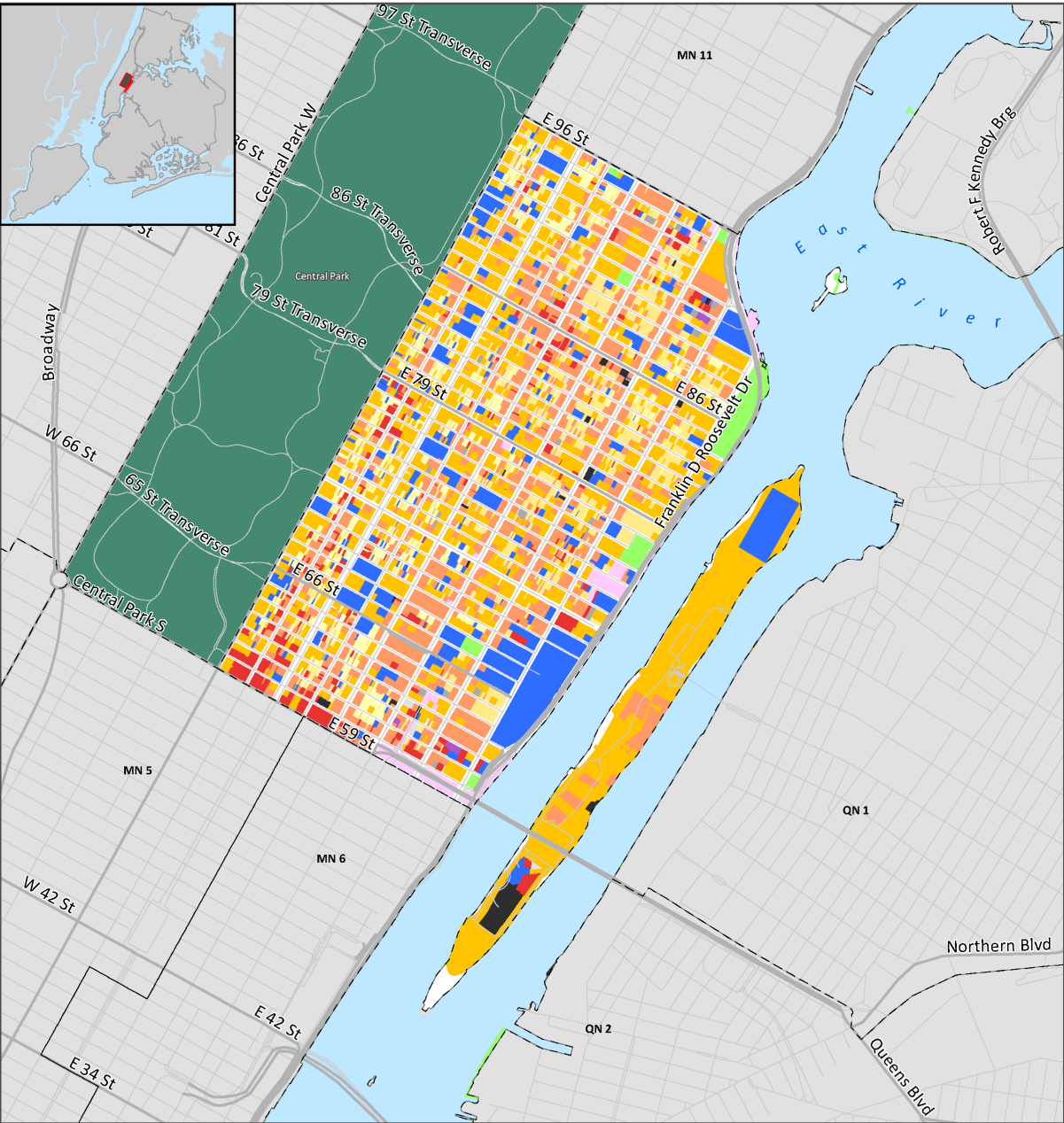
2,400

Feet

Source: MapPLUTO™ 20v7

BYTES of the Big Apple

Created January 2021



### 3. OVERVIEW OF COMMUNITY DISTRICT

Roosevelt Island and the Upper East Side of Manhattan, from the north side of East 59th Street to the south side of East 96th Street between Fifth Avenue and the East River, comprise Manhattan Community District 8. In addition to our diverse population, we are home to dozens of diplomatic residences, world famous hospitals, medical research centers, and world-renowned museums. According to the 2010 census, 229,688 people live on the Upper East Side of Manhattan, a 6.0% increase from 1990. Prosperous economic times and a major building boom that began during the 1990's have added thousands of new dwelling units to the district. Today, the district continues to grow at an amazing pace. The 1999 median household income for the District was \$74,134. Based on data from the 2000 census 6.5% of the individuals in the district live below the poverty level. There is also a large segment of the population with special needs. More than 14% of CD8's residents are senior citizens, with a high number of frail elderly. There is also a number of working poor living in the district. With affordable housing becoming increasingly scarce, commercial rent escalating, and the prices of goods and services dramatically rising, our middle class residents are struggling to meet their budgets. The influx of new residents, shoppers, and tourists have strained the delivery of municipal service.



## 4. TOP THREE PRESSING ISSUES OVERALL

### Manhattan Community Board 8

---

The three most pressing issues facing this Community Board are:

#### **Affordable housing**

Affordable housing-In response to New York City's (NYC) and the district's lack of sufficient affordable housing units; the Board has voiced its overall support of retaining and increasing affordable housing in the district. Additionally, the Board recommends rescinding the NYC Administrative Code §26-511, C, 9 of the NYC Rent Stabilization Law of 1969, a law that has increased institutional expansion within the district.

#### **Parks and open space**

Parks- The COVID-19 pandemic has demonstrated just how vital open space, parks and waterfront access are to all New Yorkers. The East River Esplanade has received a record-number of visitors, but is also continuing to go into disrepair with expanding sinkholes areas where the seawall has crumbled away. This is a dangerous situation for its many users and repairing the Esplanade in its entirety is an urgent necessity. Through the implementation of the existing, proposed designs for the Esplanade's repairs and improvements, the City can create a vital and long-lasting public amenity. Additionally, other parks in Community District 8, including John Jay Park and Ruppert Park, are also exceedingly showing signs of age and wear. At a time when our parks and open space are being used by so many New Yorkers, we urge the City to invest in redesigning these spaces to fix problems with irrigation, add additional green space where appropriate, and ultimately accommodate more New Yorkers in our parks

#### **Schools**

Schools-We need Pre-K, elementary, middle and high school seats because our district is woefully lacking in these now, and we are being overwhelmed with new high-rise construction featuring 3,4, and 5 bedrooms, thus encouraging families to purchase. The increase in the number of school children in our district will further overwhelm the system and the crowding in the existing schools will diminish the quality of the education for everyone. Also, a good school system keeps families from moving out of the city, and these families form our tax base which is desperately needed so as to provide the other services that the city requires. School funding is a necessity in our district and will determine the fate of the city.

---

## 5. SUMMARY OF COMMUNITY DISTRICT NEEDS AND BUDGET REQUESTS

### HEALTH CARE AND HUMAN SERVICES

#### Manhattan Community Board 8

##### Most Important Issue Related to Health Care and Human Services

###### **Other**

All of the above. Community Board 8 Manhattan remains strongly in favor of continued support for homeless services, mental health and substance abuse services, environmental health issues, senior services, domestic violence and elder abuse victims, and supports public and private sector efforts to assist the diverse population in our community. We are particularly concerned that with the city's homeless population at record setting levels, the Department for Homeless Services saw fit to promulgate, and persists in its attempts to implement, new shelter eligibility rules deemed likely to further swell the numbers of homeless single individuals. CB8M continues to support strongly the services and programs aimed at aiding those of our community who are in need.

##### Community District Needs Related to Health Care and Human Services

###### **Needs for Health Care and Facilities**

The main programs for seniors are offered by Lenox Hill Neighborhood House (partially funded by the New York City Housing Authority (NYCHA), Stanley M. Isaacs Neighborhood Center (a NYCHA facility), Carter Burden Center for the Aging, Roosevelt Island Senior Center, and Search and Care. CB8M has advocated for maintaining NYCHA social service programs, including the NYCHA senior centers at Lenox Hill and Stanley Isaacs, congregate meal programs, and the youth, family, and after school programs. CB8M remains strongly in favor of continued support for homeless services and supports public and private sector efforts to assist the diverse homeless population in our community. A top capital priority is increased funding for permanent affordable housing for homeless individuals and families. We support the efforts of the faith-based organizations to maintain their homeless shelter beds and of the food pantries in and out of our district to continue their work of feeding our hungry. Overall, the area of homeless services continues to be one of loss and insufficiency. There is an urgent need for additional programs that address the root causes of homelessness.

###### **Needs for Older NYs**

The population of our district includes the largest percentage of older adults, 60+, in Manhattan (20.8%).

A significant percentage of these (21.5%) live below the poverty level, or are frail, or both. Contrary to popular perception, it also includes a varying but seemingly growing number of individuals without shelter. In addition, soup kitchens, food pantries, and other food programs are seeing growing numbers of people. A primary and consistent concern for our board is protecting the senior centers and programs that provide services to seniors regardless of income. These centers and programs provide older members of the community with social interaction and nutrition, two elements vital to maintaining their long-term health and well-being. It is imperative that senior center budgets be included in the Mayor's budget, and we urge that in the future critical senior programs such as case management and elder abuse prevention be treated as essential budget items. The main programs for seniors are offered by Lenox Hill Neighborhood House (partially funded by the New York City Housing Authority (NYCHA), Stanley M. Isaacs Neighborhood Center (a NYCHA facility), Carter Burden Center for the Aging, Roosevelt Island Senior Center, and Search and Care. CB8M has advocated for maintaining NYCHA social service programs, including the NYCHA senior centers at Lenox Hill and Stanley Isaacs.

###### **Needs for Homeless**

We are particularly concerned that with the city's homeless population at record setting levels, the Department for Homeless Services saw fit to promulgate, and persists in its attempts to implement, new shelter eligibility rules deemed likely to further swell the numbers of homeless single individuals.

###### **Needs for Low Income NYs**

CB8M continues to support strongly the services and programs aimed at aiding those of our community who are in need; they remain critically important. CB8M urges the City to respond strongly to this growing

segment of our city's population.

---

## Capital Requests Related to Health Care and Human Services

Priority	Agency	Request	Explanation	Location
4/17	DHS	<b>Other capital budget request for DHS</b>	<i>DHS should work closely with HPD to fund much needed housing for the most vulnerable of our residents. We ask that this request be given the necessary funding and highest priority in the Five-Year Plan.</i>	
13/17	DHS	<b>Upgrade existing facilities for the homeless</b>	<i>Provide funding HVAC in all homeless shelters.</i>	

## Expense Requests Related to Health Care and Human Services

Priority	Agency	Request	Explanation	Location
4/28	DOHMH	<b>Animal and pest control requests including reducing rat and mosquito populations</b>	<i>Increase funding for rodent extermination on city streets</i>	
8/28	DFTA	<b>Enhance home care services</b>	<i>Increase funding for services to Older Adults including Personal and Home Care, Transportation Services, Meals-On-Wheels, Senior Congregate Care Meal Programs and Case Managers. Covid-19 has highlighted the effects of food insecurity, and must continue to be addressed.</i>	
10/28	DHS	<b>Expand street outreach</b>	<i>Increase funding for mental health and other services targeted to the homeless as well as for Homeless Services Outreach personnel, especially during the overnight hours.</i>	
12/28	DOHMH	<b>Other programs to address public health issues requests</b>	<i>Increase funding for the Department of Health Enforcement of all food vendor rules and regulations.</i>	
17/28	DOHMH	<b>Increase health and safety inspections, e.g. for restaurants and childcare programs</b>	<i>Provide funding for inspectors and enforcement personnel in agencies dealing with restaurants and food trucks, especially as it might relate to Covid-19 enforcement, should that still be necessary.</i>	

20/28	DFTA	<b>Enhance programs for elder abuse victims</b>	<i>Provide funding for Eviction Prevention Services for At-Risk Senior Citizens.</i>
25/28	HRA	<b>Provide, expand, or enhance rental assistance programs</b>	<i>Further increase funding for more permanent housing for homeless people.</i>

## **YOUTH, EDUCATION AND CHILD WELFARE**

### **Manhattan Community Board 8**

---

#### Most Important Issue Related to Youth, Education and Child Welfare

##### **Other**

All of the above. Community Board 8 Manhattan would like to see more school seats, including Pre-K seats, in all schools within the district, after school programming, youth workforce development and summer employment, adolescent substance abuse, child welfare, adoption and foster care, mental health services for youth, etc.

---

#### Community District Needs Related to Youth, Education and Child Welfare

##### **Needs for Youth Education**

CB8M is extremely concerned about the cutback in capital and expense funding which results in: overcrowding in our community district; conversion of cluster rooms to regular classrooms and a lack of specialty teachers for art, music, etc. for the schools in our district. The Board and CD8 residents feel there is a great need for more Middle School seats in Community District 8, and supports increasing seats from 3-K to High School. Youth and Community Services and Programs: The Board also recognizes the importance of providing adequate day care and after school facilities for our children. There are many CD8 residents, especially single working parents, who need affordable day care and after school programs, but whose income slightly surpasses eligibility requirements. Additional affordable programs are essential. We continue to request increased funding for childcare and after-school programs, including infant care.

##### **Needs for Youth and Child Welfare**

The Board also recognizes the importance of providing adequate day care and after school facilities for our children. There are many CD8 residents, especially single working parents, who need affordable day care and after school programs, but whose income slightly surpasses eligibility requirements. Additional affordable programs are essential. We continue to request increased funding for childcare and after-school programs, including infant care. An important issue yet to be adequately addressed is the need for programs to prevent abuse and neglect. CB8M feels that there is a need for strong evidence-based programs to provide intensive support to at-risk families. Such therapies will increase family functioning while reducing the need for unnecessary and costly out of home care.

---

## Capital Requests Related to Youth, Education and Child Welfare

Priority	Agency	Request	Explanation	Location
1/17	SCA	<b>Provide a new or expand an existing high school</b>	<i>Provide funding for a new High School in Community District 8.</i>	
2/17	SCA	<b>Provide a new or expand an existing middle/intermediate school</b>	<i>Provide funding for a new Middle School in Community District 8.</i>	
3/17	SCA	<b>Provide a new or expand an existing elementary school</b>	<i>Provide funding for new Elementary Schools in Community District 8.</i>	

## Expense Requests Related to Youth, Education and Child Welfare

Priority	Agency	Request	Explanation	Location
1/28	DOE	<b>Other educational programs requests</b>	<i>Fund 3-K and Pre-K seats in CB8</i>	
2/28	DYCD	<b>Provide, expand, or enhance after school programs for elementary school students (grades K-5)</b>	<i>Fund accessible and affordable Out of School Time and DayCare programs for all children who go to school in CB8 or who have parents that work in CB8.</i>	
3/28	DYCD	<b>Other youth workforce development requests</b>	<i>Increase funding for youth programs in CB8. Fully fund the Summer Youth Employment Program, Learning to Work Program, and other youth workforce development programs.</i>	
11/28	ACS	<b>Provide, expand, or enhance preventive services and community based alternatives for youth</b>	<i>Provide additional funding for Children Services, especially programs to prevent abuse and neglect.</i>	

## **PUBLIC SAFETY AND EMERGENCY SERVICES**

### **Manhattan Community Board 8**

---

#### Most Important Issue Related to Public Safety and Emergency Services

##### **Other**

All of the above. Community Board 8 Manhattan maintains a close working relationship with the 19th Precinct, Manhattan North, the Central Park Precinct, and the 114th Precinct, which serves Roosevelt Island from Queens. CB8M continues to be concerned about bike enforcement and the number of scams and fraud against the elderly and vulnerable as well as Grand Larceny and Pedestrian Safety cases. The Board is concerned about the rise of violent crimes in the district.

---

#### Community District Needs Related to Public Safety and Emergency Services

##### **Needs for Public Safety**

CB8M supports full funding for all fire and emergency medical services in our district and citywide. CB8M is particularly concerned about the loss of fire marshals in recent years, and we have requested the restoration of funding for these personnel.

##### **Needs for Emergency Services**

CB8M supports the maintenance of emergency response capacity. The Board supports provision of ambulances with a mobile stroke treatment units.

---



## Capital Requests Related to Public Safety and Emergency Services

The Community Board did not submit any Budget Requests in this category.

## Expense Requests Related to Public Safety and Emergency Services

Priority	Agency	Request	Explanation	Location
15/28	NYPD	<b>Assign additional traffic enforcement officers</b>	<i>Provide funding to increase the current number of Traffic Control agents and School Crossing Guards. Additionally, please provide funding to increase the number officers focused on bike and scooter enforcement. Finally, provide funding for increased enforcement of parking placard abuse and general parking enforcement.</i>	
16/28	NYPD	<b>Assign additional traffic enforcement officers</b>	<i>Provide additional funding to expand the Truck Traffic Enforcement Unit.</i>	

## CORE INFRASTRUCTURE, CITY SERVICES AND RESILIENCY

### Manhattan Community Board 8

---

#### Most Important Issue Related to Core Infrastructure, City Services and Resiliency.

##### **Other**

All the above. Community Board 8 Manhattan is responsive to residents' concerns about sanitation and the environment. We receive numerous complaints and are trying to be responsive to our residents and businesses about sanitation and the environment. We continue to be concerned about the lack of corner baskets and request additional baskets which should be emptied on a more frequent basis. We strongly urge additional enforcement of commercial property owners who fail to clean their sidewalk and 18 inches from the curb into the street with emphasis on East 86th Street between Lexington and Second Avenues. We also need more garbage collections and street cleanings in an integrated approach to a cleaner community. We support more frequent sanitation inspections and efforts to consistently maintain presentable clean-swept sidewalks and streets.

---

#### Community District Needs Related to Core Infrastructure, City Services and Resiliency.

##### **Needs for Water, Sewers, and Environmental Protection**

With regards to drinking water, CB8M passed a resolution in February 2012 in favor of DEP's proposal to build a bypass tunnel to facilitate repair of the Delaware Aqueduct in order to ensure that DEP can continue to deliver high quality drinking water every day to NYC, and further resolved that this support is contingent upon DEP minimizing and mitigating potential environmental impacts in the areas where the work is to be performed, and upon DEP having an adequate plan in place to supplement the water supply with high-quality drinking water during the shut-down phase of up to 6 to 15 months of the Delaware Aqueduct. CB8M supports additional inspections for flooding complaints, storm catch basins, and sewers. The Board supports additional resources for cleaning and maintenance of sewers and catch basins.

##### **Needs for Sanitation Services**

CB8M is responsive to residents' concerns about sanitation and the environment. The cleanliness of our streets and neighborhoods is of great importance to our community and is related to successful business operations, to our well-being, and to the quality of life. In an integrated approach to a cleaner community, we support frequent sanitation inspections and efforts to consistently maintain presentable clean-swept sidewalks and streets. We support the Adopt-a-Basket program, and additional resources for education related to this program.

---

## Capital Requests Related to Core Infrastructure, City Services and Resiliency

Priority	Agency	Request	Explanation	Location
11/17	DSNY	<b>Provide new or increase number of sanitation trucks and other equipment</b>	<i>Fund the NYC Department of Sanitation for the placement of "rat-proof" garbage containers with lids in CD8, preferably solar powered compactor baskets. We ask the agency work closely with neighborhood groups and local BIDs to find funding for this request.</i>	

## Expense Requests Related to Core Infrastructure, City Services and Resiliency

Priority	Agency	Request	Explanation	Location
22/28	DSNY	<b>Other garbage collection and recycling requests</b>	<i>Increase recycling program including solid waste. Enhance funding for composting and organics collection.</i>	

## HOUSING, ECONOMIC DEVELOPMENT AND LAND USE

### Manhattan Community Board 8

#### Most Important Issue Related to Housing, Economic Development and Land Use

##### **Other**

All of the above. Community Board 8 Manhattan opposes the taking of any public space for private development, while we recognize the need for additional affordable housing in our district.

#### Community District Needs Related to Housing, Economic Development and Land Use

##### **Needs for Land Use**

Zoning changes including R8-B enacted within the past fifteen years to protect the midblock from massive structures and R10-A governing use of the plaza bonus and towers on a base for avenues and cross-town streets have only slightly moderated development. New tall story buildings on some avenues, which currently are allowed, strain the infrastructure and municipal services, and reduce access to light and air. The Board supports a height limitation of 210 feet for new developments on Third, Second, First and York Avenues. CB8M and local civic groups have urged the Department of City Planning to review the Community Facility provisions of the Zoning Resolution. CD8 is the only district where community facilities are entitled to a 5.1 FAR in the R8B mid-blocks. CB8M has proposed modifications to the Department of City Planning to change the current community facility in R8B areas from a 5.1 to a 4.0 FAR. CB8M seeks to preserve the Upper East Side's residential character. The C1 and C2 zoning (Local Retail Use) control commercial signage in the District. CB8M seeks to maintain a careful balance to prevent new buildings from detracting from CD8's historic districts. CB8M believes that new and more effective regulations, coupled with increased enforcement, would ease this problem. Roosevelt Island is undergoing major change with the addition of the Cornell Tech graduate center. The campus will occupy most of the southern part of the island. The graduate center benefits the community and city, but the quality of life of the residents must be protected while the island undergoes major construction for the years to come.

##### **Needs for Housing**

Community District 8 has a larger percentage of renters (37.5%) compared to rest of Manhattan (23%) and New York City (32%). Residents of Community District 8 pay more for rent than the rest of Manhattan and New York City, indeed, median rent in CD8 was \$2,290/month in 2016, the 3rd highest of all community districts in New York City - \$1,380/month. Conversely, median "asking rent" in Community District 8 was lower (\$2,799) than in Manhattan (\$3,195) or the City (\$2,800). However, the difference between "asking rents" and "median rents" was closer in Community District 8 (\$509) than the rest of Manhattan (\$1,505) or New York City (\$1,420). The percentage of rent-burdened residents (i.e., paying more than 30% of income for rent) was lower in Community District 8 (41.5%) than either Manhattan (45.9%) or New York City (53.5%) – although 19.5% of the district's residents were paying over 50% of their income on rent. The district also has a smaller share of affordable units to low-income households than Manhattan or the City. Specifically, 12.5% of available units were affordable to households earning 80% of AMI, 4.7% for households earning 50% of AMI and 2.1% for households at 30% of AMI. In terms of rent regulated units, Community District 8 has a smaller share (33%) of units than Manhattan (44%) or the City (45%). Community District 8 has a higher median income (\$119,261) than Manhattan (\$79,077) or the City (\$60,008) and a lower share of "low-income" (below 80% AMI) residents (27%) than Manhattan (47%) or the City (61%). The District also has a smaller share of residents living in poverty (6.5%) than Manhattan (17.3%) or New York City (18.9%). It does however, have a larger share of seniors (18.1%) than Manhattan (14.9%) or the City as a whole (13.5%). Overall, the district offers disproportionately few housing opportunities for low-income New Yorkers and needs much more affordable housing developments to meet the City's affordable housing need and fair housing obligations.

##### **Needs for Economic Development**

CB8M works with the Madison Avenue Business Improvement District, the East Midtown Partnership and the DOE Fund on a range of issues. CB8M's efforts on traffic and quality of life are critical to our local businesses. We support city programs that promote the retention and growth of local businesses.

## Capital Requests Related to Housing, Economic Development and Land Use

Priority	Agency	Request	Explanation	Location
6/17	HPD	<b>Other affordable housing programs requests</b>	<i>Provide more affordable housing for all income very low, low, and middle income New Yorkers.</i>	

## Expense Requests Related to Housing, Economic Development and Land Use

Priority	Agency	Request	Explanation	Location
14/28	DOB	<b>Address illegal conversions and uses of buildings</b>	<i>Hire additional DOB inspectors for compliance and code enforcement, including for illegal signage, and hire auditors for applications.</i>	
18/28	NYCHA	<b>Improve public housing maintenance and cleanliness</b>	<i>Provide more health and building inspectors for NYCHA facilities, in particular related to lead, mold, and bedbugs.</i>	
19/28	NYCHA	<b>Other public housing maintenance, staffing and management requests</b>	<i>Increase funding to ensure all NYCHA community and senior centers remain open. Maintain all current open space.</i>	
27/28	SBS	<b>Provide or expand business recovery assistance after an emergency</b>	<i>Create grants, low-interest loans and other financial supports to assist small businesses in adapting to and recovering from the COVID-19 pandemic.</i>	

## TRANSPORTATION

### Manhattan Community Board 8

---

#### Most Important Issue Related to Transportation and Mobility

##### **Other**

All of the above. Our streets are unsafe in their present condition for pedestrians, motorists, and cyclists due to potholes and poorly paved streets.

---

#### Community District Needs Related to Transportation and Mobility

##### **Needs for Traffic and Transportation Infrastructure**

Community Board 8 Manhattan has consistently ranked funding for street repair and maintenance high on its list of priorities, and we applaud the NYC Department of Transportation's Manhattan Highway Maintenance Division on the job they do managing this substantial task, especially in light of its need for an additional pothole gang, that the Board strongly supports. Traffic Congestion has become an increasing problem in Community District 8 and will get worse with the additional hospital construction projects and the Marine Transfer Station. We request that the proposed traffic study for the full length of York Avenue (paid for by CUNY MSK) be carried out as soon as possible. Large numbers of residents, daily workers and visitors contribute to traffic congestion, for hire vehicles, noise, pollution, and crowded streets and sidewalks. Even with a second subway line traveling the East Side, public transit continues to be overwhelmed. The MTA/NYC Transit must work with commuters and the Board to address service issues such as punctuality, bus bunching and dwell times.

##### **Needs for Transit Services**

We support the need of more buses servicing bus lines in our district. The 4,5,6, and Q lines need additional service. We support full funding of the Fast Forward program, including enhanced technology to improve service.

---

## Capital Requests Related to Transportation and Mobility

Priority	Agency	Request	Explanation	Location
8/17	DOT	<b>Roadway maintenance (i.e. pothole repair, resurfacing, trench restoration, etc.)</b>	<i>Provide funding to NYC DOT for necessary materials and personnel to repair potholes and repave avenues curb to curb and major crosstown streets on an ongoing basis within CD8.</i>	

## Expense Requests Related to Transportation and Mobility

Priority	Agency	Request	Explanation	Location
7/28	DOT	<b>Provide new traffic or pedestrian signals</b>	<i>Increase funding for audible accessible crossing signals for intersections in CD8</i>	
13/28	DOT	<b>Other traffic improvement requests</b>	<i>Increase the number of workers to inspect, repair, and preserve the DOT's infrastructure -- both bridges and roads -- as well as sidewalk repairs. These are critical for pedestrian safety.</i>	

## **PARKS, CULTURAL AND OTHER COMMUNITY FACILITIES**

### **Manhattan Community Board 8**

#### Most Important Issue Related to Parks, Cultural and Other Community Facilities

##### **Other**

All of the above. Community District 8 has among the least amount of open space per population size compared to any other district in New York City. Preserving and enhancing our vital parks and open space is a critical priority. The COVID-19 pandemic has further demonstrated the critical role our parks, open spaces, and waterfront plays in serving the people of New York. We must immediately make the necessary repairs to the East River Esplanade in order to protect its users and preserve this vital open space for generations to come. Without expeditious repairs, the Esplanade (which connects 3 different community boards) is at serious risk of succumbing to the growing number of sinkholes and other weak areas along the waterfront. Repairing it is an URGENT necessity. Community District 8 is also in urgent need of additional funding to redesign some of our most used parks, including Ruppert, John Jay, and phase 3 of Andrew Haswell Green, as well as preserve other well-used and much-beloved open spaces like the 72nd Street Overlook. We urge the Parks Department to recognize the Overlook as vital open space and to work with its surrounding neighbors and Community Board 8 to repair and protect this space.

#### Community District Needs Related to Parks, Cultural and Other Community Facilities

##### **Needs for Parks**

The population density in Community District 8, combined with the increased use of open space during the COVID-19 pandemic, makes our parks and greenery a precious commodity. CB8M is in urgent need of funding to repair and enhance the East River Esplanade, funding to redesign existing parks in CB8M to accommodate larger audiences with a wide variety of interests and needs, and a commitment to form an innovative partnership with the Parks Department to identify new opportunities for open space and public use. CB8M also urges the City to further support and empower community-based groups and conservancies to continue to care for our gardens, parks, and open space with the appropriate funding for clean-up events, as well as community programming.

As our parks and open spaces continue to receive record-number of visitors during the pandemic, and as our district continues to grow with individuals and families wishing to enjoy our parks, we also urge the Parks Department to fund and dispatch PEP Officers in our parks to enforce adherence to rules and ensure that everyone feels safe and welcome.

##### **Needs for Cultural Services**

We support cultural programming and the use community facilities to enhance the quality of life in our district.

##### **Needs for Library Services**

For more than a century, the New York Public Library has provided quality service to all New Yorkers. The branch libraries are an important public resource for local residents, especially senior citizens and students. The library budget must be maintained. CB8M urges the Mayor and the City Council to maintain funding for the operating costs to allow the continuation of 7 day a week service at all branches. We also urge increased funding for infrastructure, technological improvements and library materials, particularly increased funding for books, periodicals, and other information resources in all our branch libraries. Funding should be found to allow libraries to operate at full hours (i.e. 10-5 Monday through Sunday) and expanded evening hours at least twice a week. As sources of information have evolved, the Library has kept pace, offering one of the only free points of access to the internet in New York City. CB8M believes that all New Yorkers should have free opportunities to use electronic resources. We support the restoration and enhancement of libraries in their use as a community facility.

##### **Needs for Community Boards**

We support strengthening the ability of community boards to provide vital services and information to our districts.



## Capital Requests Related to Parks, Cultural and Other Community Facilities

Priority	Agency	Request	Explanation	Location
5/17	NYPL	<b>Create a new, or renovate or upgrade an existing public library</b>	<i>Provide funding for a ramp or other means of accessibility at the Yorkville Branch Library.</i>	
7/17	DPR	<b>Other requests for park, building, or access improvements</b>	<i>Provide funding to repair, restore, and design the entire Esplanade including the piling on the lower level between 60th and 125th Streets, and install below ground infrastructure to repair the urgent needs for seawall repair in order to expand water access along the entire Esplanade.</i>	
9/17	DPR	<b>Reconstruct or upgrade a park or amenity (i.e. playground, outdoor athletic field)</b>	<i>Provide funding to redesign and renovate Ruppert as a whole, including the installation of new irrigation to improve and expand planting areas.</i>	
10/17	DPR	<b>Reconstruct or upgrade a park or amenity (i.e. playground, outdoor athletic field)</b>	<i>Provide funding to redesign and renovate John Jay Park as a whole.</i>	
12/17	DPR	<b>Other street trees and forestry services requests</b>	<i>Install tree guards where missing from or when new trees go in and extend the tree pit where needed.</i>	
14/17	NYPL	<b>Create a new, or renovate or upgrade an existing public library</b>	<i>Providing funding for a new HVAC system at the Webster and Yorkville Branch Libraries.</i>	
15/17	NYPL	<b>Create a new, or renovate or upgrade an existing public library</b>	<i>Upgrade electrical system at Webster Branch Library.</i>	
16/17	DPR	<b>Other requests for park, building, or access improvements</b>	<i>Fund a fully built Park along the East River between 60th and 63rd Streets on the Esplanade including future phase 3 of Andrew Haswell Green Park.</i>	East River Esplanade 60th St 60th St
17/17	DPR	<b>Other requests for park, building, or access improvements</b>	<i>Fund the return of the Queensboro Oval to the community for year round public use.</i>	York Ave 59th St 59th St

CS	NYPL	<b>Create a new, or renovate or upgrade an existing public library</b>	<i>Provide funding for rooftop repairs for the East 67th Street Library.</i>
CS	NYPL	<b>Create a new, or renovate or upgrade an existing public library</b>	<i>Provide funding for new HVAC systems at the 67th Street Branch Library.</i>
CS	NYPL	<b>Create a new, or renovate or upgrade an existing public library</b>	<i>Fund exterior rehabilitation of windows and replace where needed at the 96th Street Branch Library.</i>
CS	NYPL	<b>Create a new, or renovate or upgrade an existing public library</b>	<i>Fund the expansion of the Roosevelt Island Branch of the NYC Public Library.</i>
CS	DPR	<b>Reconstruct or upgrade a park or amenity (i.e. playground, outdoor athletic field)</b>	<i>Fund a fully built Park along the East River between 60th and 63rd Streets on the Esplanade including phase 2B of Andrew Haswell Green Park.</i>
CS	DPR	<b>Reconstruct or upgrade a park or amenity (i.e. playground, outdoor athletic field)</b>	<i>Fund the reconstruction of Honeylocust Park.</i>

#### Expense Requests Related to Parks, Cultural and Other Community Facilities

Priority	Agency	Request	Explanation	Location
5/28	DPR	<b>Other park maintenance and safety requests</b>	<i>Preserve funding for year round workers and Associate Parks and Recreation Workers (APSWs) at NYC Parks and Recreation.</i>	
6/28	DPR	<b>Improve trash removal and cleanliness</b>	<i>Provide funding for exterminators in all Parks within CB8.</i>	

9/28	DPR	<b>Other park maintenance and safety requests</b>	<i>Increase funding for additional roving Park maintenance staff, tree pruners, and tree climbers to address critical public safety issues related to severe weather.</i>
21/28	NYPL	<b>Extend library hours or expand and enhance library programs</b>	<i>Restore Sunday Service to one library in CB8 without cutting weekday hours.</i>
24/28	DPR	<b>Enhance park safety through more security staff (police or parks enforcement)</b>	<i>Fund additional PEP officers to enforce parks rules in all CB8 parks..</i>
26/28	DPR	<b>Plant new street trees</b>	<i>Install new trees where missing in CD8.</i>

## 6. OTHER BUDGET REQUESTS

### Other Capital Requests

The Community Board did not submit any Budget Requests in this category.

### Other Expense Requests

Priority	Agency	Request	Explanation	Location
23/28	DCWP	<b>Other expense budget request for DCA</b>	<i>Fund additional DCA inspectors for sidewalk cafes and compliance permits regulation enforcement. If Covid-19 related outdoor dining is still in place, fund inspections of these.</i>	
28/28	Other	<b>Other expense budget request</b>	<i>For the Board of Elections and Election Day Support. Provide funding for more voting locations; more maintenance staff/mechanics available to repair machines/ensure machines are working.</i>	

## 7. SUMMARY OF PRIORITIZED BUDGET REQUESTS

### Capital Budget Requests

Priority	Agency	Request	Explanation	Location
1/17	SCA	<b>Provide a new or expand an existing high school</b>	<i>Provide funding for a new High School in Community District 8.</i>	
2/17	SCA	<b>Provide a new or expand an existing middle/intermediate school</b>	<i>Provide funding for a new Middle School in Community District 8.</i>	
3/17	SCA	<b>Provide a new or expand an existing elementary school</b>	<i>Provide funding for new Elementary Schools in Community District 8.</i>	
4/17	DHS	<b>Other capital budget request for DHS</b>	<i>DHS should work closely with HPD to fund much needed housing for the most vulnerable of our residents. We ask that this request be given the necessary funding and highest priority in the Five-Year Plan.</i>	
5/17	NYPL	<b>Create a new, or renovate or upgrade an existing public library</b>	<i>Provide funding for a ramp or other means of accessibility at the Yorkville Branch Library.</i>	
6/17	HPD	<b>Other affordable housing programs requests</b>	<i>Provide more affordable housing for all income very low, low, and middle income New Yorkers.</i>	
7/17	DPR	<b>Other requests for park, building, or access improvements</b>	<i>Provide funding to repair, restore, and design the entire Esplanade including the piling on the lower level between 60th and 125th Streets, and install below ground infrastructure to repair the urgent needs for seawall repair in order to expand water access along the entire Esplanade.</i>	
8/17	DOT	<b>Roadway maintenance (i.e. pothole repair, resurfacing, trench restoration, etc.)</b>	<i>Provide funding to NYC DOT for necessary materials and personnel to repair potholes and repave avenues curb to curb and major crosstown streets on an ongoing basis within CD8.</i>	

9/17	DPR	<b>Reconstruct or upgrade a park or amenity (i.e. playground, outdoor athletic field)</b>	<i>Provide funding to redesign and renovate Ruppert as a whole, including the installation of new irrigation to improve and expand planting areas.</i>	
10/17	DPR	<b>Reconstruct or upgrade a park or amenity (i.e. playground, outdoor athletic field)</b>	<i>Provide funding to redesign and renovate John Jay Park as a whole.</i>	
11/17	DSNY	<b>Provide new or increase number of sanitation trucks and other equipment</b>	<i>Fund the NYC Department of Sanitation for the placement of "rat-proof" garbage containers with lids in CD8, preferably solar powered compactor baskets. We ask the agency work closely with neighborhood groups and local BIDs to find funding for this request.</i>	
12/17	DPR	<b>Other street trees and forestry services requests</b>	<i>Install tree guards where missing from or when new trees go in and extend the tree pit where needed.</i>	
13/17	DHS	<b>Upgrade existing facilities for the homeless</b>	<i>Provide funding HVAC in all homeless shelters.</i>	
14/17	NYPL	<b>Create a new, or renovate or upgrade an existing public library</b>	<i>Providing funding for a new HVAC system at the Webster and Yorkville Branch Libraries.</i>	
15/17	NYPL	<b>Create a new, or renovate or upgrade an existing public library</b>	<i>Upgrade electrical system at Webster Branch Library.</i>	
16/17	DPR	<b>Other requests for park, building, or access improvements</b>	<i>Fund a fully built Park along the East River between 60th and 63rd Streets on the Esplanade including future phase 3 of Andrew Haswell Green Park.</i>	East River Esplanade 60th St 60th St
17/17	DPR	<b>Other requests for park, building, or access improvements</b>	<i>Fund the return of the Queensboro Oval to the community for year round public use.</i>	York Ave 59th St 59th St
CS	NYPL	<b>Create a new, or renovate or upgrade an existing public library</b>	<i>Provide funding for rooftop repairs for the East 67th Street Library.</i>	

CS	NYPL	<b>Create a new, or renovate or upgrade an existing public library</b>	<i>Provide funding for new HVAC systems at the 67th Street Branch Library.</i>
CS	NYPL	<b>Create a new, or renovate or upgrade an existing public library</b>	<i>Fund exterior rehabilitation of windows and replace where needed at the 96th Street Branch Library.</i>
CS	NYPL	<b>Create a new, or renovate or upgrade an existing public library</b>	<i>Fund the expansion of the Roosevelt Island Branch of the NYC Public Library.</i>
CS	DPR	<b>Reconstruct or upgrade a park or amenity (i.e. playground, outdoor athletic field)</b>	<i>Fund a fully built Park along the East River between 60th and 63rd Streets on the Esplanade including phase 2B of Andrew Haswell Green Park.</i>
CS	DPR	<b>Reconstruct or upgrade a park or amenity (i.e. playground, outdoor athletic field)</b>	<i>Fund the reconstruction of Honeylocust Park.</i>

## Expense Budget Requests

Priority	Agency	Request	Explanation	Location
1/28	DOE	<b>Other educational programs requests</b>	<i>Fund 3-K and Pre-K seats in CB8</i>	
2/28	DYCD	<b>Provide, expand, or enhance after school programs for elementary school students (grades K-5)</b>	<i>Fund accessible and affordable Out of School Time and DayCare programs for all children who go to school in CB8 or who have parents that work in CB8.</i>	
3/28	DYCD	<b>Other youth workforce development requests</b>	<i>Increase funding for youth programs in CB8. Fully fund the Summer Youth Employment Program, Learning to Work Program, and other youth workforce development programs.</i>	
4/28	DOHMH	<b>Animal and pest control requests including reducing rat and mosquito populations</b>	<i>Increase funding for rodent extermination on city streets</i>	
5/28	DPR	<b>Other park maintenance and safety requests</b>	<i>Preserve funding for year round workers and Associate Parks and Recreation Workers (APSWs) at NYC Parks and Recreation.</i>	
6/28	DPR	<b>Improve trash removal and cleanliness</b>	<i>Provide funding for exterminators in all Parks within CB8.</i>	
7/28	DOT	<b>Provide new traffic or pedestrian signals</b>	<i>Increase funding for audible accessible crossing signals for intersections in CD8</i>	
8/28	DFTA	<b>Enhance home care services</b>	<i>Increase funding for services to Older Adults including Personal and Home Care, Transportation Services, Meals-On-Wheels, Senior Congregate Care Meal Programs and Case Managers. Covid-19 has highlighted the effects of food insecurity, and must continue to be addressed.</i>	
9/28	DPR	<b>Other park maintenance and safety requests</b>	<i>Increase funding for additional roving Park maintenance staff, tree pruners, and tree climbers to address critical public safety issues related to severe weather.</i>	



10/28	DHS	<b>Expand street outreach</b>	<i>Increase funding for mental health and other services targeted to the homeless as well as for Homeless Services Outreach personnel, especially during the overnight hours.</i>
11/28	ACS	<b>Provide, expand, or enhance preventive services and community based alternatives for youth</b>	<i>Provide additional funding for Children Services, especially programs to prevent abuse and neglect.</i>
12/28	DOHMH	<b>Other programs to address public health issues requests</b>	<i>Increase funding for the Department of Health Enforcement of all food vendor rules and regulations.</i>
13/28	DOT	<b>Other traffic improvement requests</b>	<i>Increase the number of workers to inspect, repair, and preserve the DOT's infrastructure -- both bridges and roads -- as well as sidewalk repairs. These are critical for pedestrian safety.</i>
14/28	DOB	<b>Address illegal conversions and uses of buildings</b>	<i>Hire additional DOB inspectors for compliance and code enforcement, including for illegal signage, and hire auditors for applications.</i>
15/28	NYPD	<b>Assign additional traffic enforcement officers</b>	<i>Provide funding to increase the current number of Traffic Control agents and School Crossing Guards. Additionally, please provide funding to increase the number officers focused on bike and scooter enforcement. Finally, provide funding for increased enforcement of parking placard abuse and general parking enforcement.</i>
16/28	NYPD	<b>Assign additional traffic enforcement officers</b>	<i>Provide additional funding to expand the Truck Traffic Enforcement Unit.</i>
17/28	DOHMH	<b>Increase health and safety inspections, e.g. for restaurants and childcare programs</b>	<i>Provide funding for inspectors and enforcement personnel in agencies dealing with restaurants and food trucks, especially as it might relate to Covid-19 enforcement, should that still be necessary.</i>
18/28	NYCHA	<b>Improve public housing maintenance and cleanliness</b>	<i>Provide more health and building inspectors for NYCHA facilities, in particular related to lead, mold, and bedbugs.</i>

19/28	NYCHA	<b>Other public housing maintenance, staffing and management requests</b>	<i>Increase funding to ensure all NYCHA community and senior centers remain open. Maintain all current open space.</i>
20/28	DFTA	<b>Enhance programs for elder abuse victims</b>	<i>Provide funding for Eviction Prevention Services for At-Risk Senior Citizens.</i>
21/28	NYPL	<b>Extend library hours or expand and enhance library programs</b>	<i>Restore Sunday Service to one library in CB8 without cutting weekday hours.</i>
22/28	DSNY	<b>Other garbage collection and recycling requests</b>	<i>Increase recycling program including solid waste. Enhance funding for composting and organics collection.</i>
23/28	DCWP	<b>Other expense budget request for DCA</b>	<i>Fund additional DCA inspectors for sidewalk cafes and compliance permits regulation enforcement. If Covid-19 related outdoor dining is still in place, fund inspections of these.</i>
24/28	DPR	<b>Enhance park safety through more security staff (police or parks enforcement)</b>	<i>Fund additional PEP officers to enforce parks rules in all CB8 parks..</i>
25/28	HRA	<b>Provide, expand, or enhance rental assistance programs</b>	<i>Further increase funding for more permanent housing for homeless people.</i>
26/28	DPR	<b>Plant new street trees</b>	<i>Install new trees where missing in CD8.</i>
27/28	SBS	<b>Provide or expand business recovery assistance after an emergency</b>	<i>Create grants, low-interest loans and other financial supports to assist small businesses in adapting to and recovering from the COVID-19 pandemic.</i>
28/28	Other	<b>Other expense budget request</b>	<i>For the Board of Elections and Election Day Support. Provide funding for more voting locations; more maintenance staff/mechanics available to repair machines/ensure machines are working.</i>