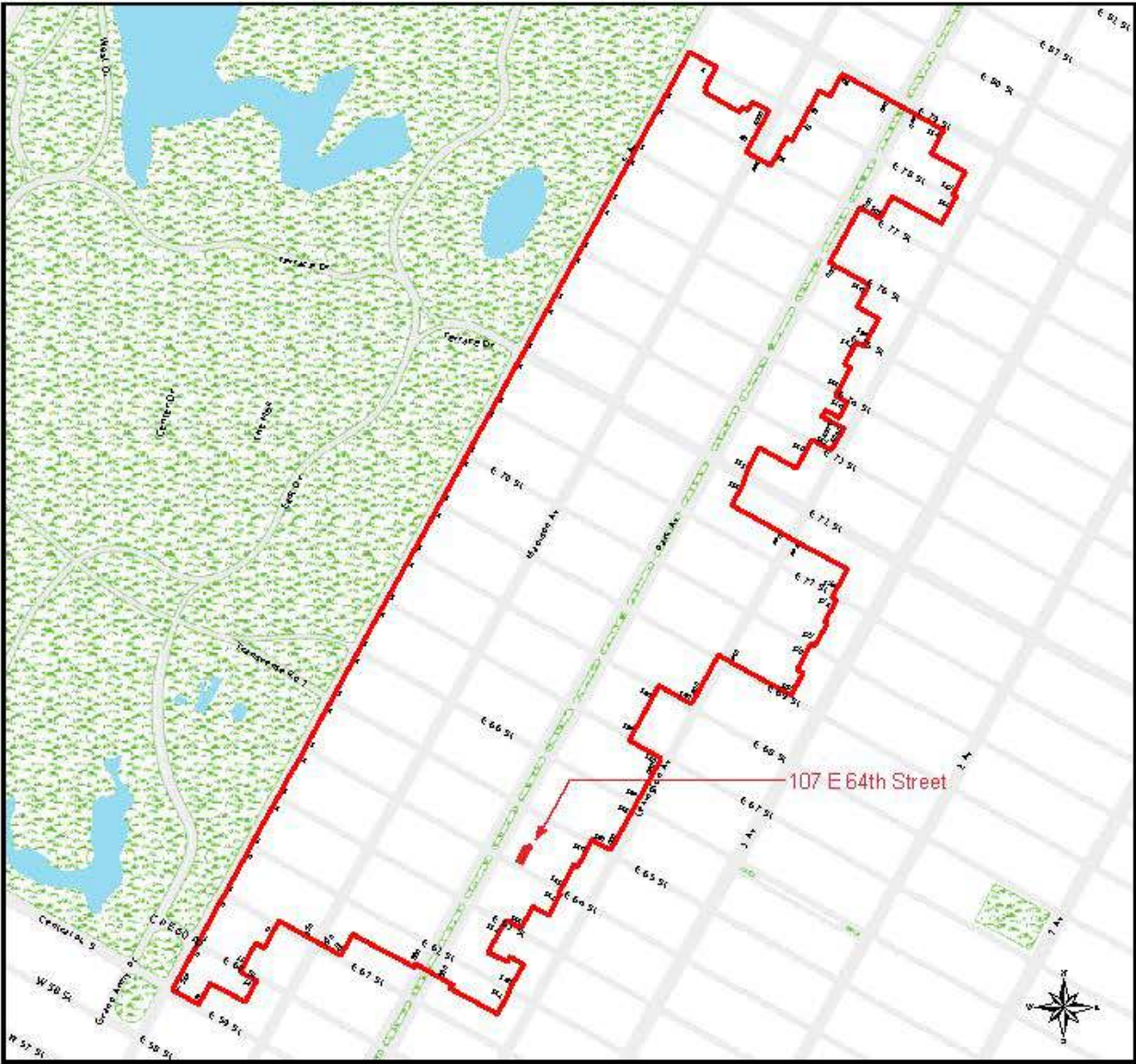



Upper East Side




Upper East Side
Historic District
Manhattan

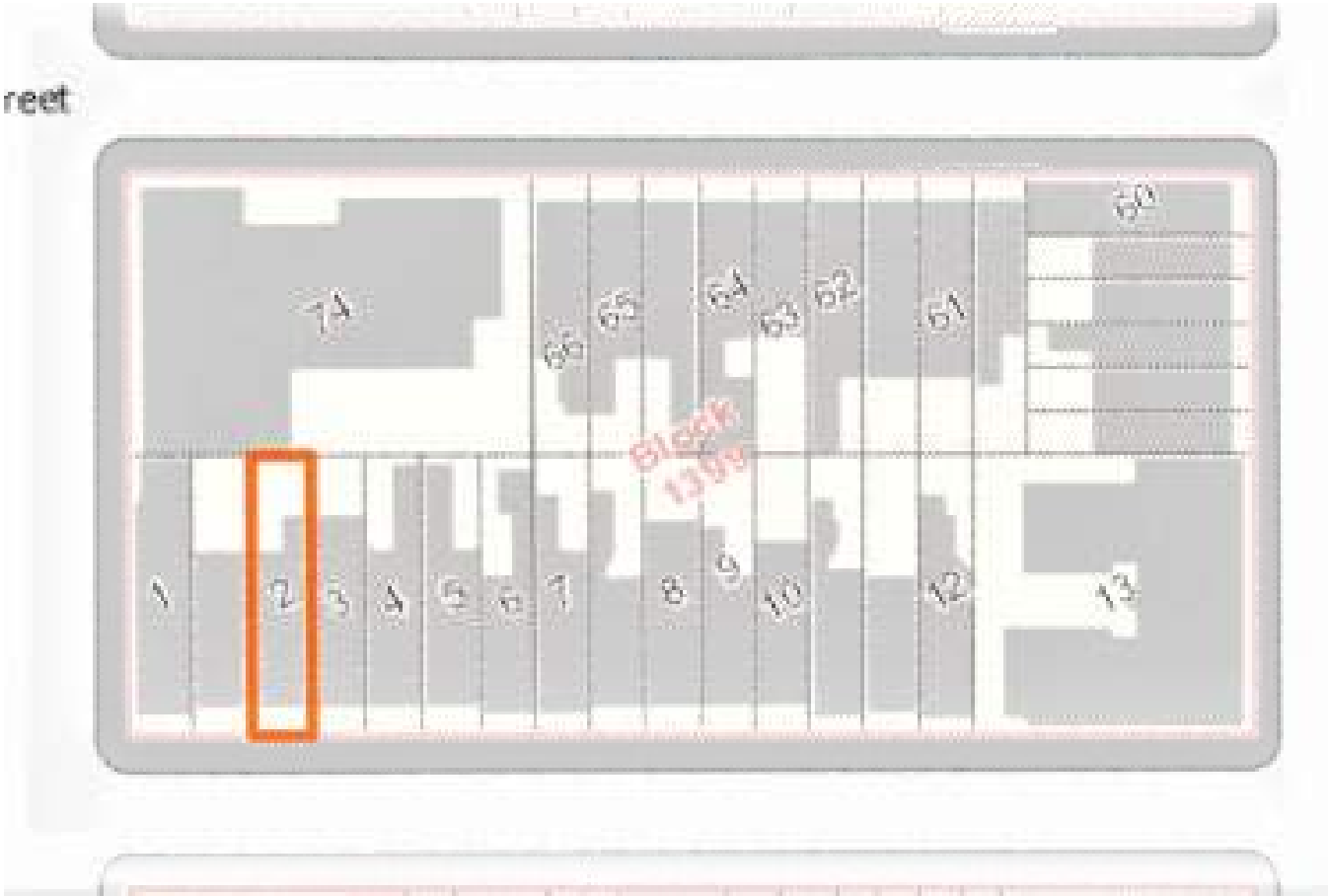
Designated May 19, 1981

 Historic District Boundaries

Upper East Side
Historic District
Manhattan

Designated May 19, 1981

 Historic District Boundaries



Pleskow Architects

13432 Beach Ave
Marina del Rey CA 90292
T 310 577 9300
F 310 499 5661
pleskowarchitects.com

NOTICE: The designs shown and described herein including all technical drawings, graphics, and models thereof, are proprietary and cannot be copied, duplicated or commercially exploited. In whole or in part, without express written permission of Pliskow Architects, Inc. These are available for limited review and evaluation by clients, consultants, contractors, government agencies, vendors and other personnel only in accordance with His Honor, Copyright: Pliskow Architects, Inc. All Rights Reserved.
13432 Beach Ave. Venice CA 90292 (310) 577-4000

Upon acceptance and use of this drawing, the Contractor agrees to release and inform the Architect of any discrepancies or conflicts prior to the preparation of any, without exception, shop drawings, templates, layouts, or execution of any work related to the information contained on this document.

107 E 64th Street,
New York, NY 10065

Sheet Title

Site Information

Sheet No.

LPC-01

Date

11/11/2020



Pleskow Architects
13432 Beach Ave
Marina del Rey CA 90292
T 310 577 9300
F 310 499 5661
pleskowarchitects.com

NOTES: The designs shown and described herein including all technical drawings, graphics, and models thereof, are proprietary and cannot be copied, duplicated or commercially exploited, in whole or in part, without express written permission of Pleskow Architects, Inc. These are available for limited review and evaluation by clients, consultants, contractors, government agencies, vendors and others concerned with the project. Copyright © Pleskow Architects, Inc. All Rights Reserved. 13432 Beach Ave., Marina del Rey, CA 90292, (310) 577-9300. Upon acceptance and use of this drawing, the Contractor agrees to release and defend the Architect of any damages or claims that may be asserted against or incurred by the Contractor or any subcontractor, in connection with the project, or as a result of any work related to the information contained on this document.

107 E 64th Street,
New York, NY 10065

Sheet Title		Existing Conditions		
Sheet No.	LPC-02	Date	11/11/2020	



1927 (MCNY)



1928 (MCNY)

Historic Conditions

<div><div><div>PLESKOW</div><div>Architects</div></div><div><div>13432 Beach Ave</div><div>Marina del Rey CA 90292</div><div>T 310 577 9300</div><div>F 310 499 5661</div><div>pleskowarchitects.com</div></div><div><div>NOTES: The designs shown and described herein including all technical drawings, graphics, and models thereof, are proprietary and cannot be copied, duplicated or commercially exploited, in whole or in part, without express written permission of Pleskow Architects, Inc. These are available for limited review and evaluation by clients, consultants, contractors, government agencies, vendors and others concerned with the project.</div><div>Copyright © Pleskow Architects, Inc. All Rights Reserved.</div><div>13432 Beach Ave, Marina del Rey, CA 90292 (310) 577-9300</div><div>Upon acceptance and use of this drawing, the Contractor agrees to release and defend Pleskow Architects, Inc. from the liability of any damages or costs incurred by the preparation of any, without exception, design drawings, technical reports, or execution of any work related to the information contained on this document.</div></div></div>	Pleskow Architects 13432 Beach Ave Marina del Rey CA 90292 T 310 577 9300 F 310 499 5661 pleskowarchitects.com			107 E 64th Street, New York, NY 10065			Sheet Title	Historic Conditions		
	Sheet No.	LPC-03	Date	11/11/2020						

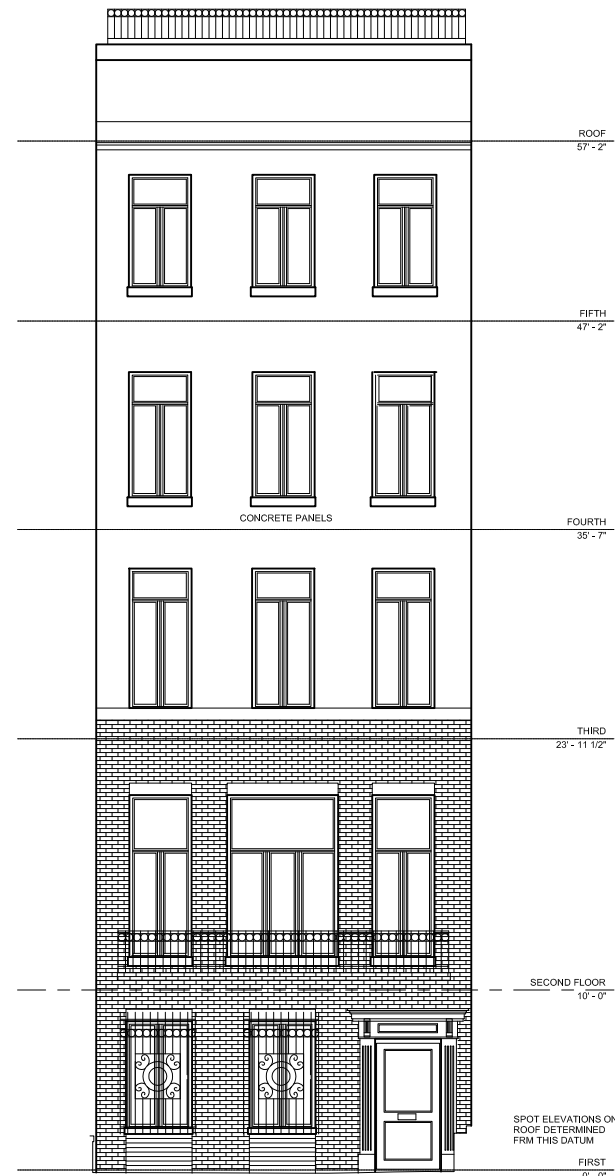


1940 (Municipal Archives)

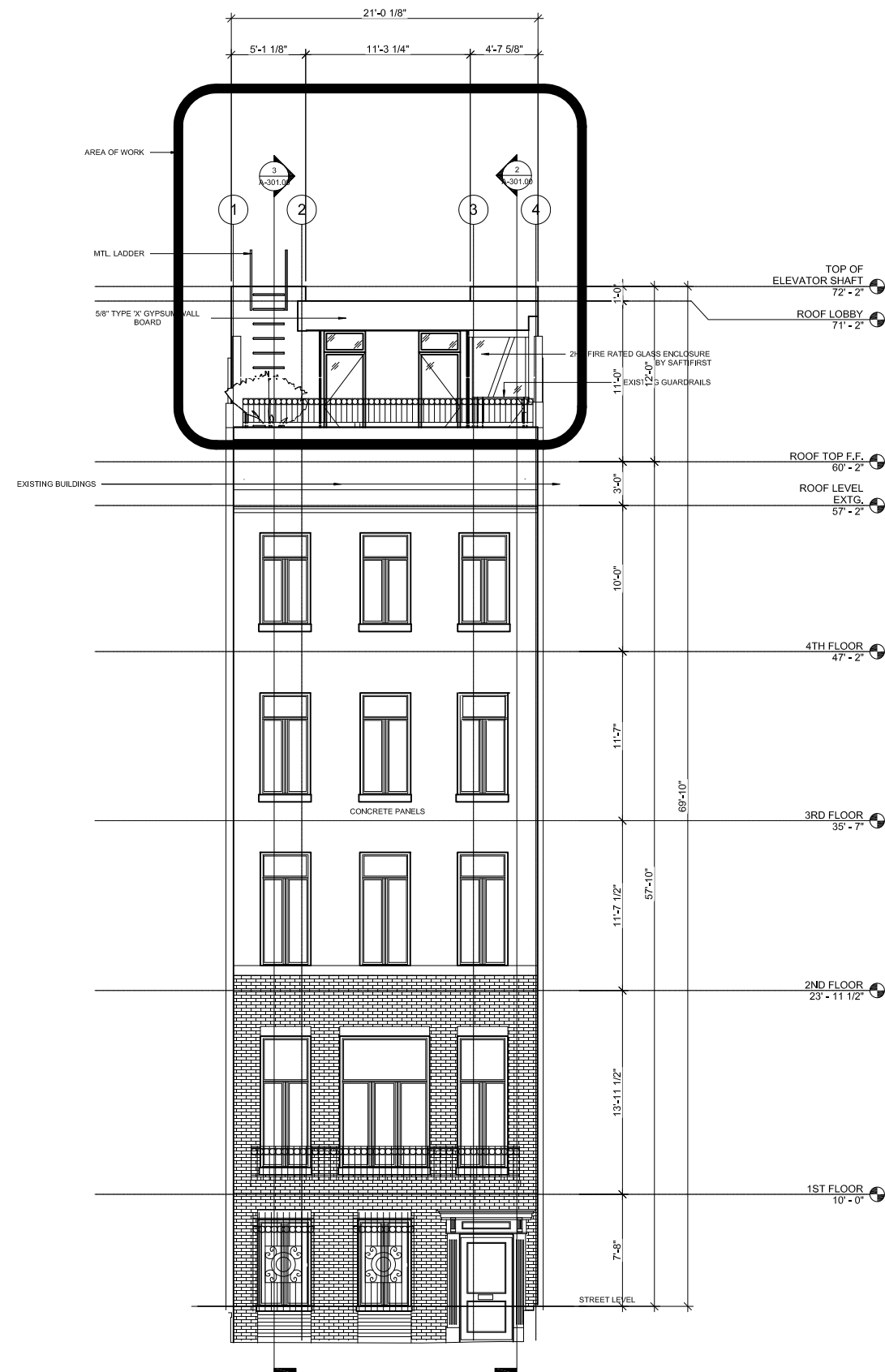


1980 (Municipal Archives)

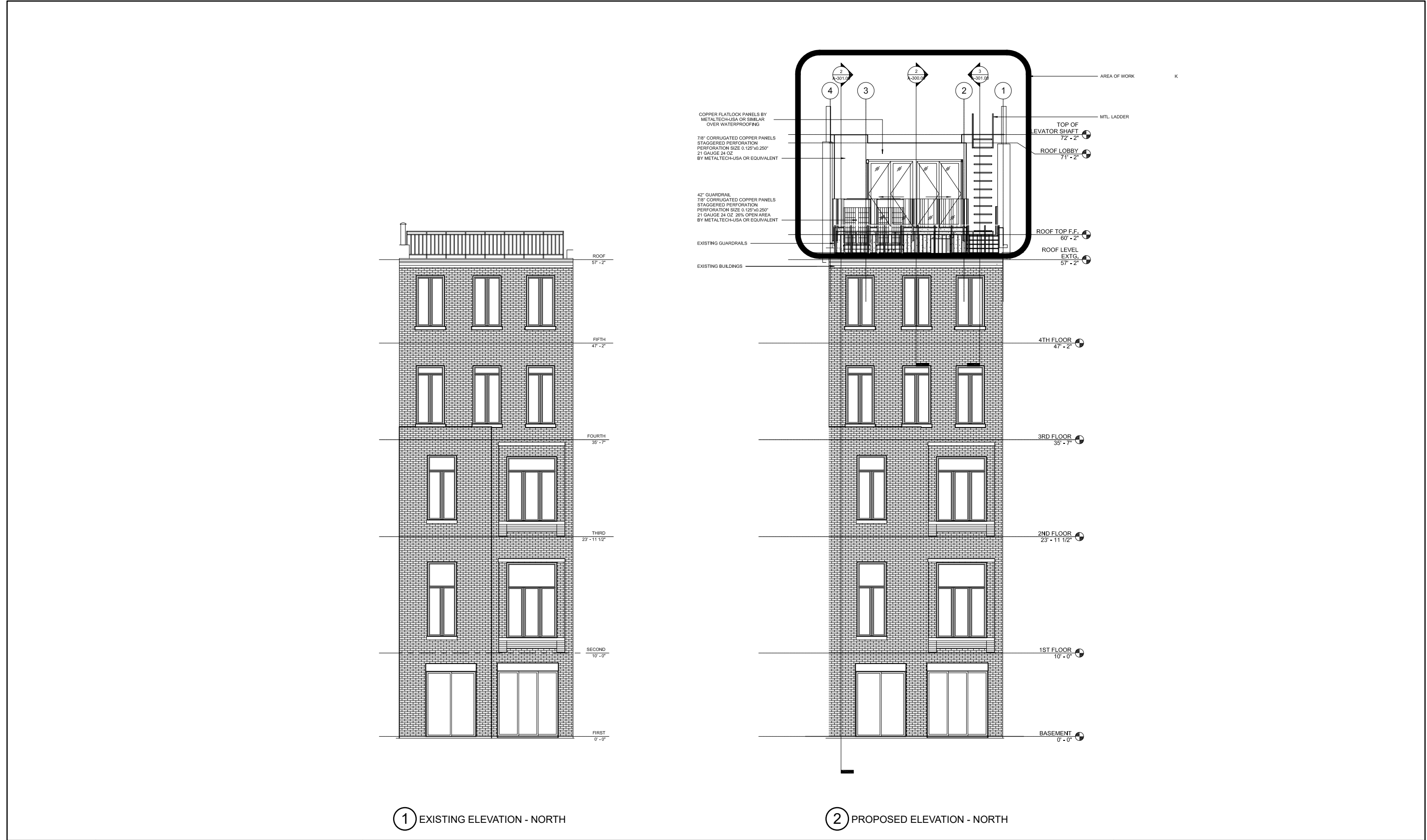
PLESKOW Architects	<p>Pleskow Architects 13432 Beach Ave Marina del Rey CA 90292 T 310 577 9300 F 310 499 5661 pleskowarchitects.com</p> <p><small>NOTES: The designs shown and described herein including all text, drawings, graphics, and models thereof, are proprietary and cannot be copied, published or commercially exploited, in whole or in part, without express written permission of Pleskow Architects, Inc. These are available for limited review and evaluation by clients, consultants, contractors, government agencies, vendors and others concerned and in accordance with the Rules, Copyright, Pleskow Architects, Inc. All Rights Reserved. 13432 Beach Ave., Marina del Rey, CA 90292, (310) 577-9300. Upon acceptance and use of this drawing, the Contractor agrees to release and defend the Architect of any damages or claims that may be asserted against or by, without exception, the drawings, templates, layouts, or recolor of any work related to the information contained on this document.</small></p>	<p>107 E 64th Street, New York, NY 10065</p>				<p>Sheet Title</p> <p>Sheet No.</p>	<p>Historic Conditions</p> <p>LPC-04</p> <p>Date</p> <p>11/11/2020</p>		
------------------------------	--	--	--	--	--	-------------------------------------	--	--	--

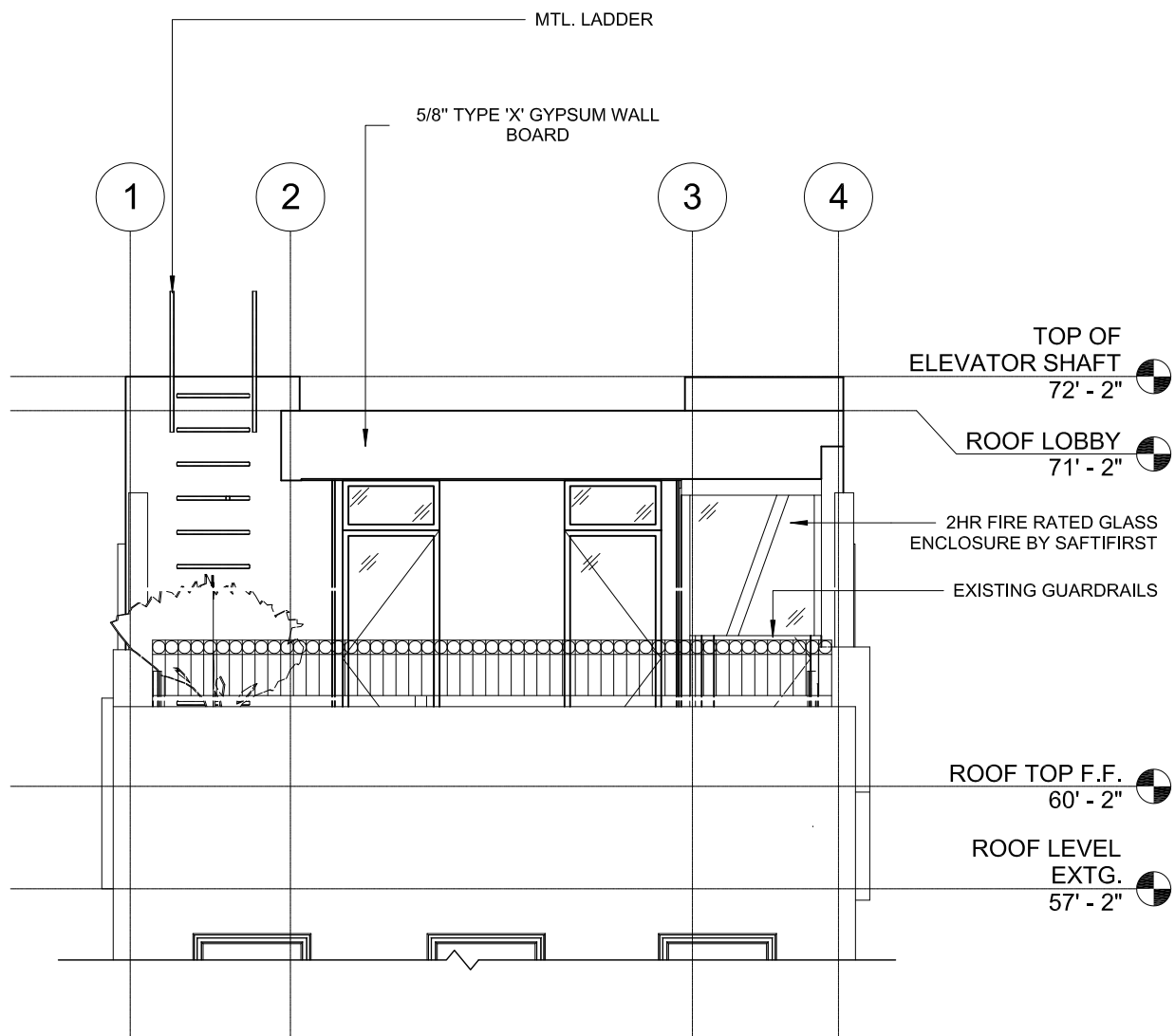


1 EXISTING ELEVATION - SOUTH

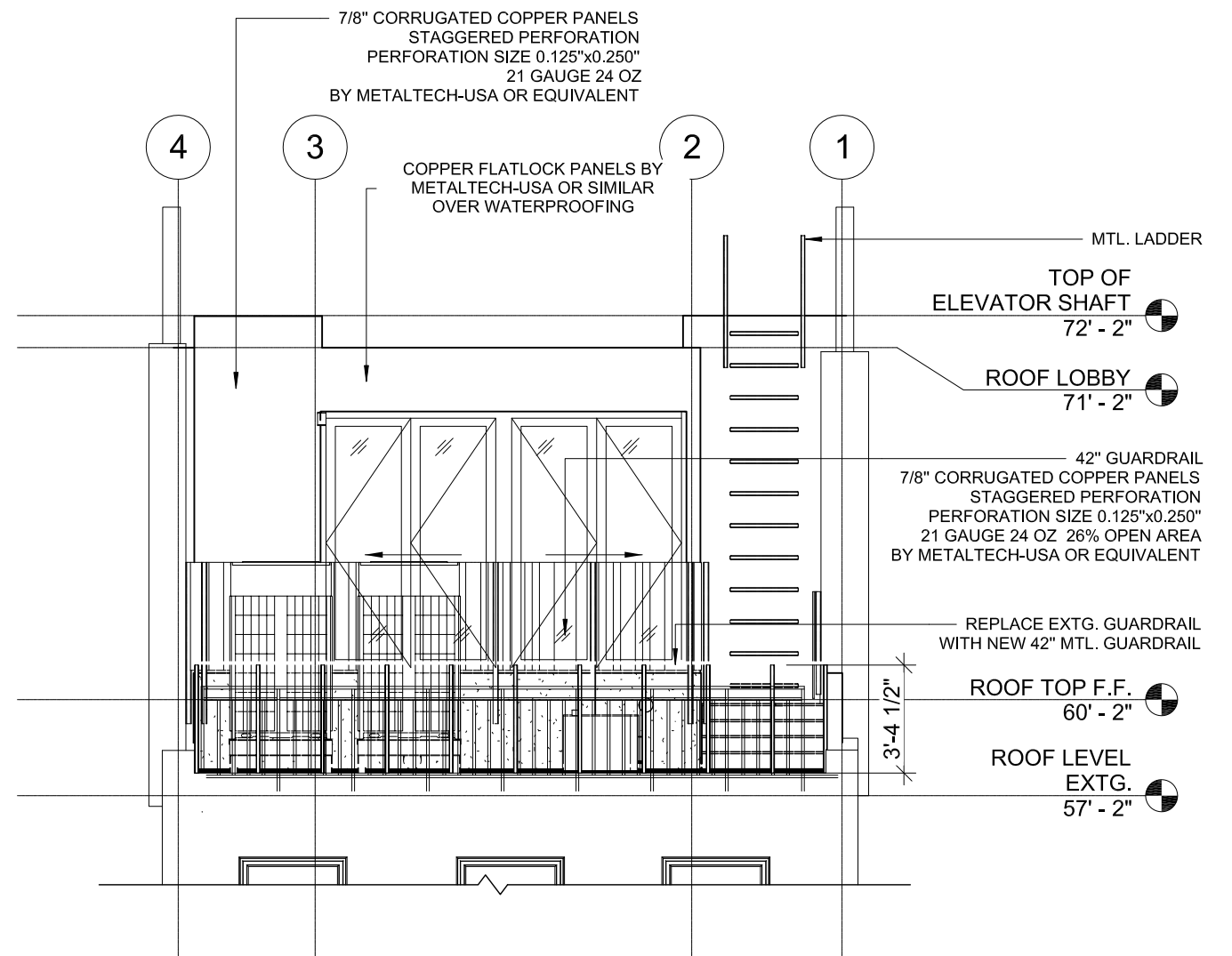


2 PROPOSED ELEVATION - SOUTH





① SOUTH ELEVATION
1/4" = 1'-0"



③ NORTH ELEVATION
1/4" = 1'-0"

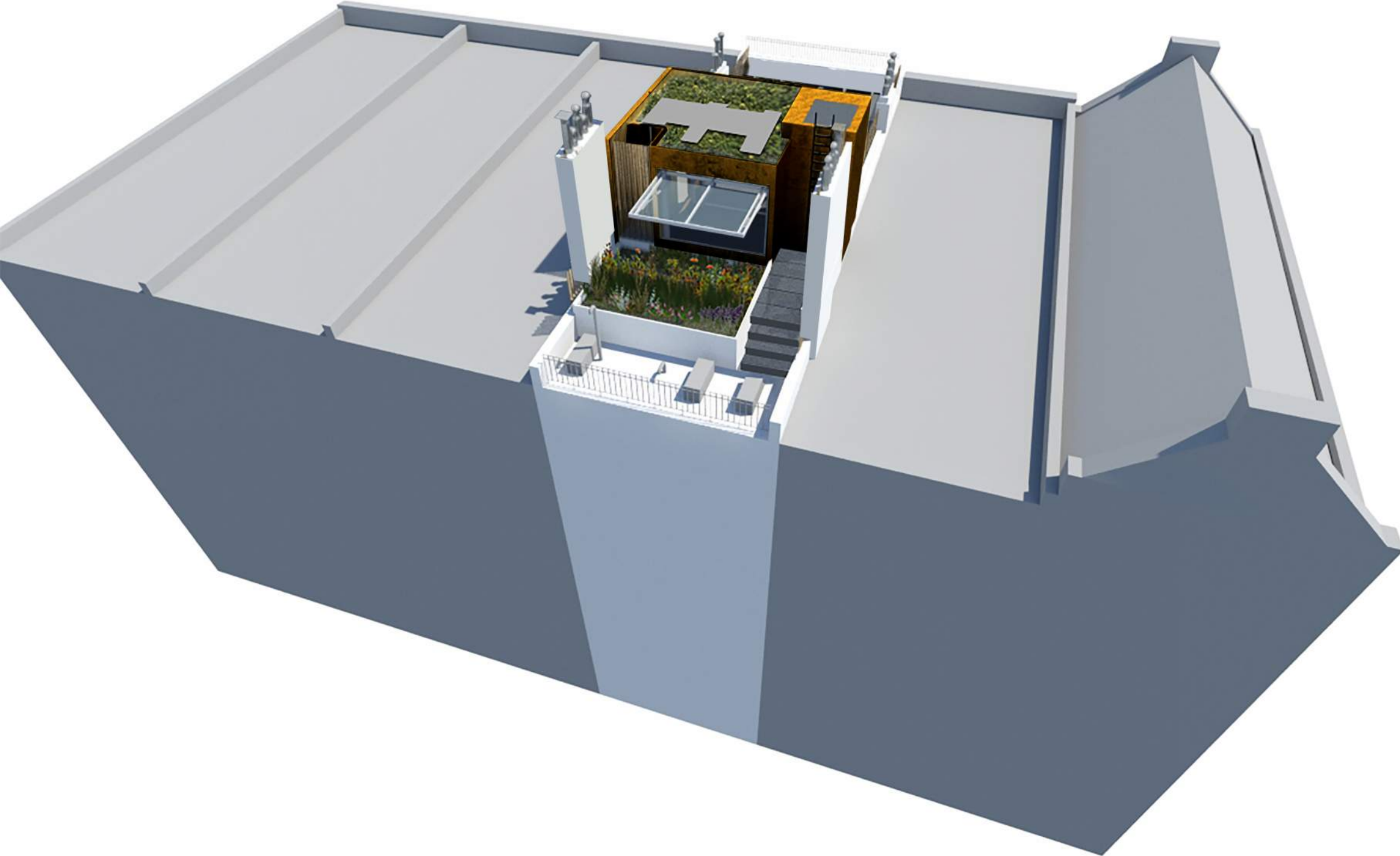


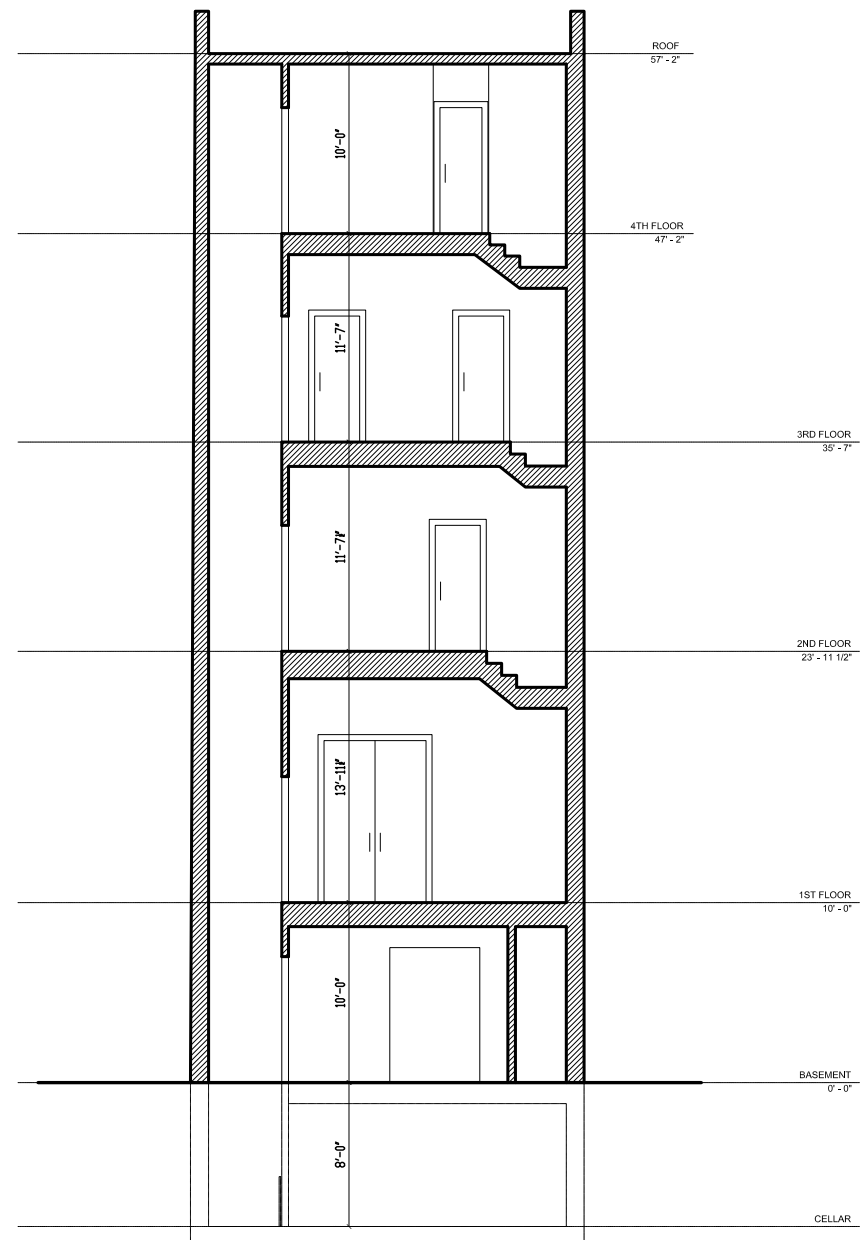
Pleskow Architects
13432 Beach Ave
Marina del Rey CA 90292
T 310 577 9300
F 310 499 5661
pleskowarchitects.com

NOTES: The designs shown and described herein including all technical drawings, graphics, and models thereof, are proprietary and cannot be copied, duplicated or commercially exploited, in whole or in part, without express written permission of Pleskow Architects, Inc. These are available for limited review and evaluation by clients, consultants, contractors, government agencies, vendors and others concerned and in accordance with the Rules, Copyright, Pleskow Architects, Inc. All Rights Reserved. 13432 Beach Ave, Marina del Rey, CA 90292, (310) 577-9300. Upon acceptance and use of this drawing, the Contractor agrees to release and defend the Architect of any damages or liabilities prior to the preparation of any, without exception, shop drawings, materials, fixtures, or execution of any work related to the information contained on this document.

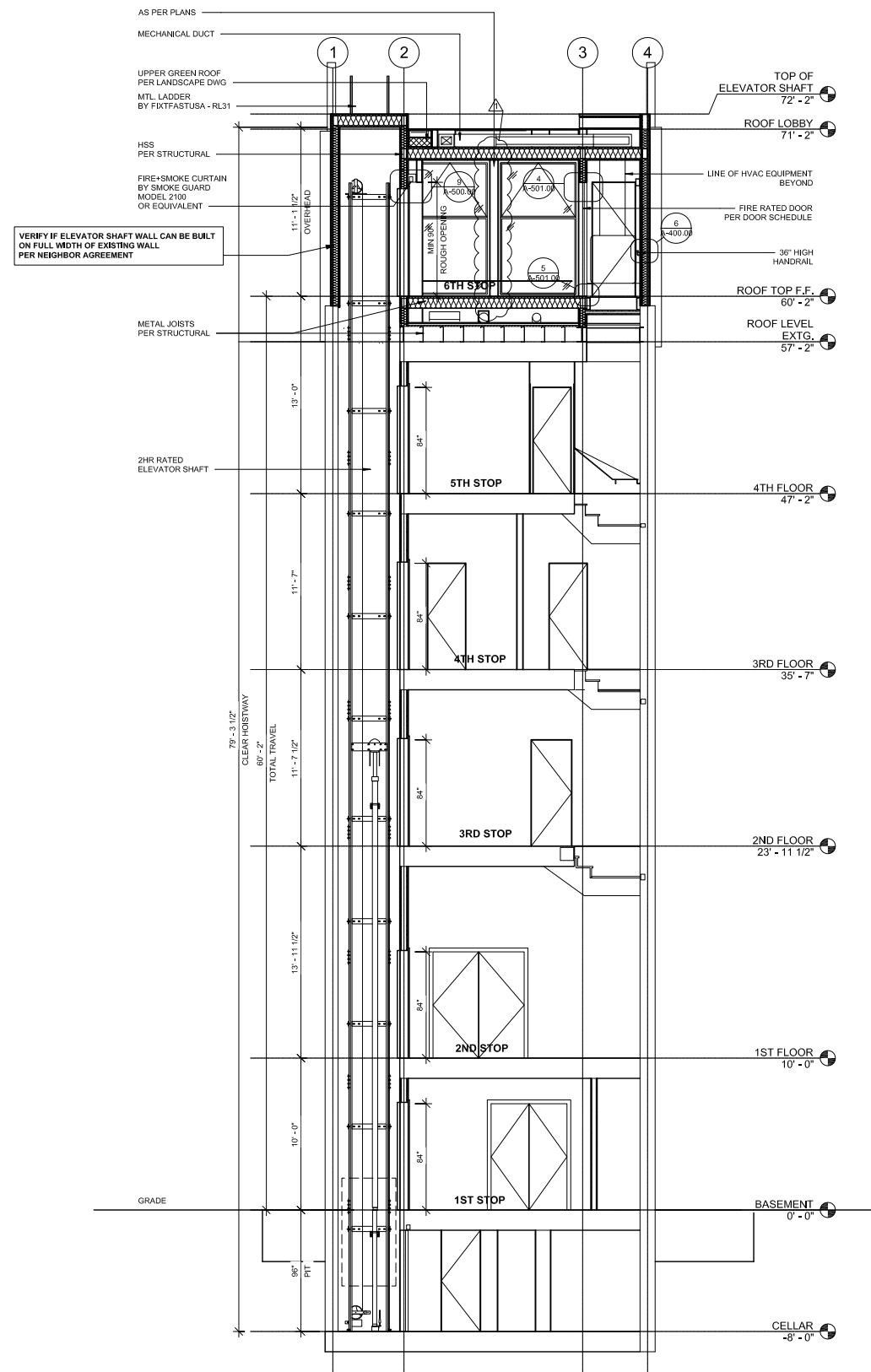
107 E 64th Street,
New York, NY 10065

Sheet Title	3D View		
Sheet No.	LPC-08	Date	11/11/2020

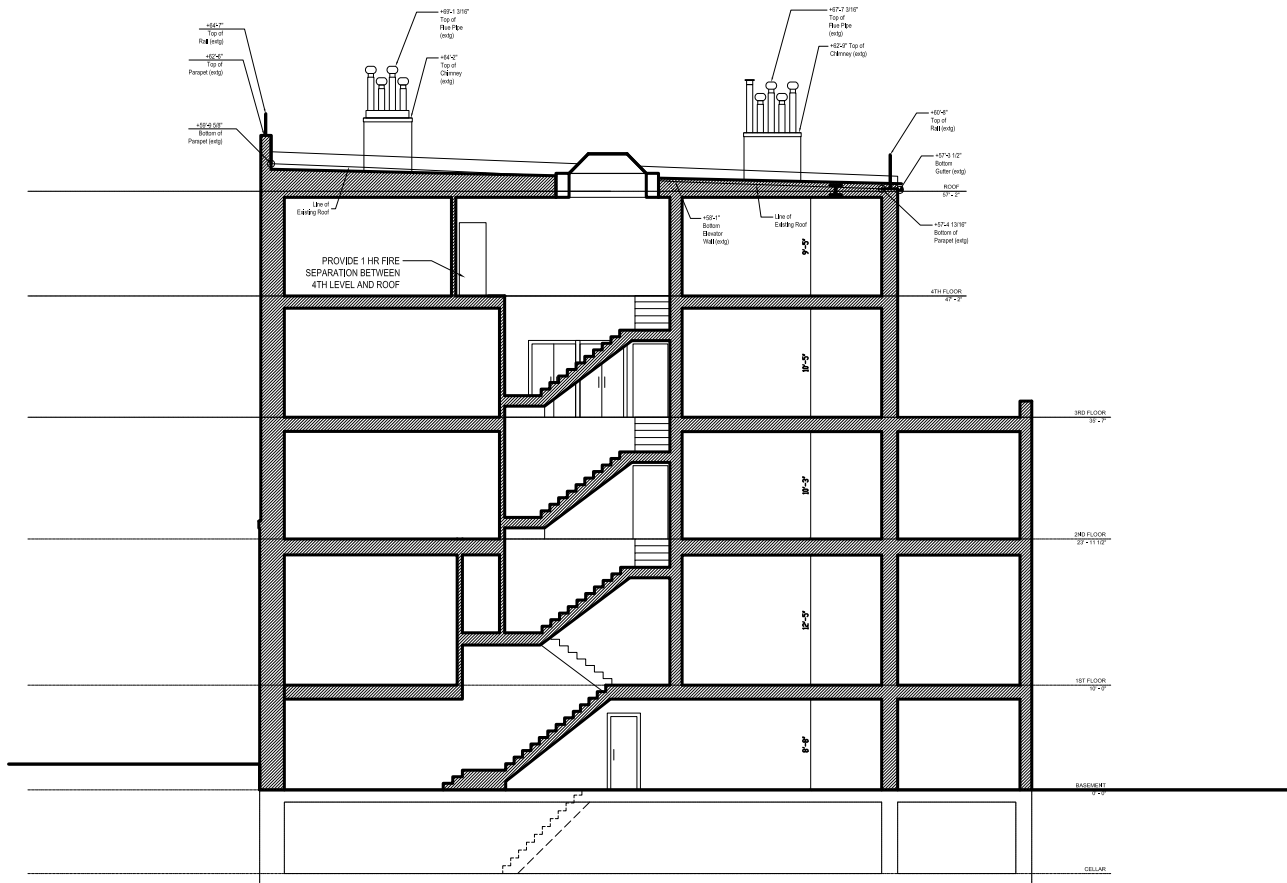




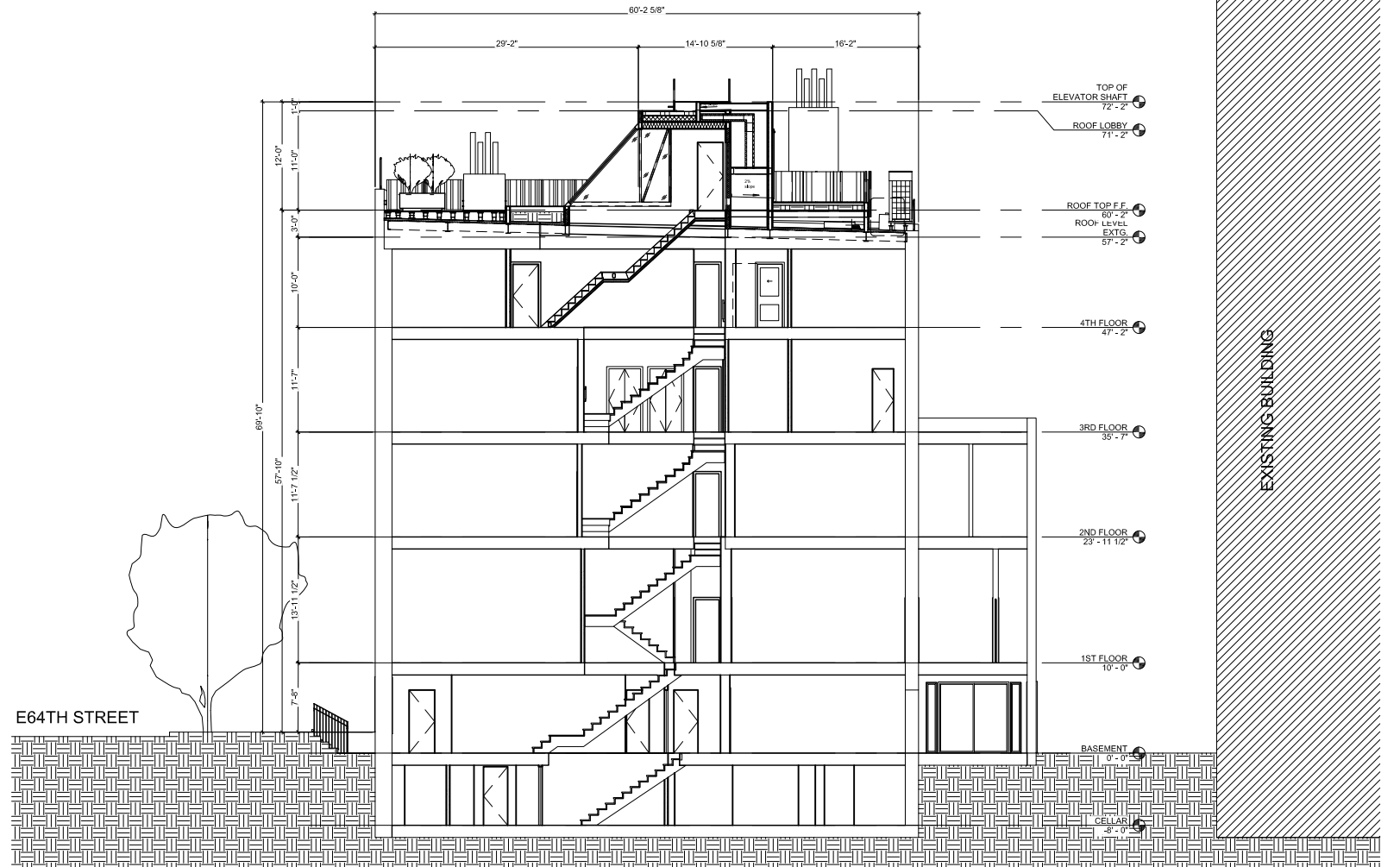
① SECTION 1 - EXISTING FULL HEIGHT OF BUILDING



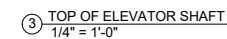
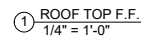
② SECTION 1 - FULL HEIGHT OF BUILDING

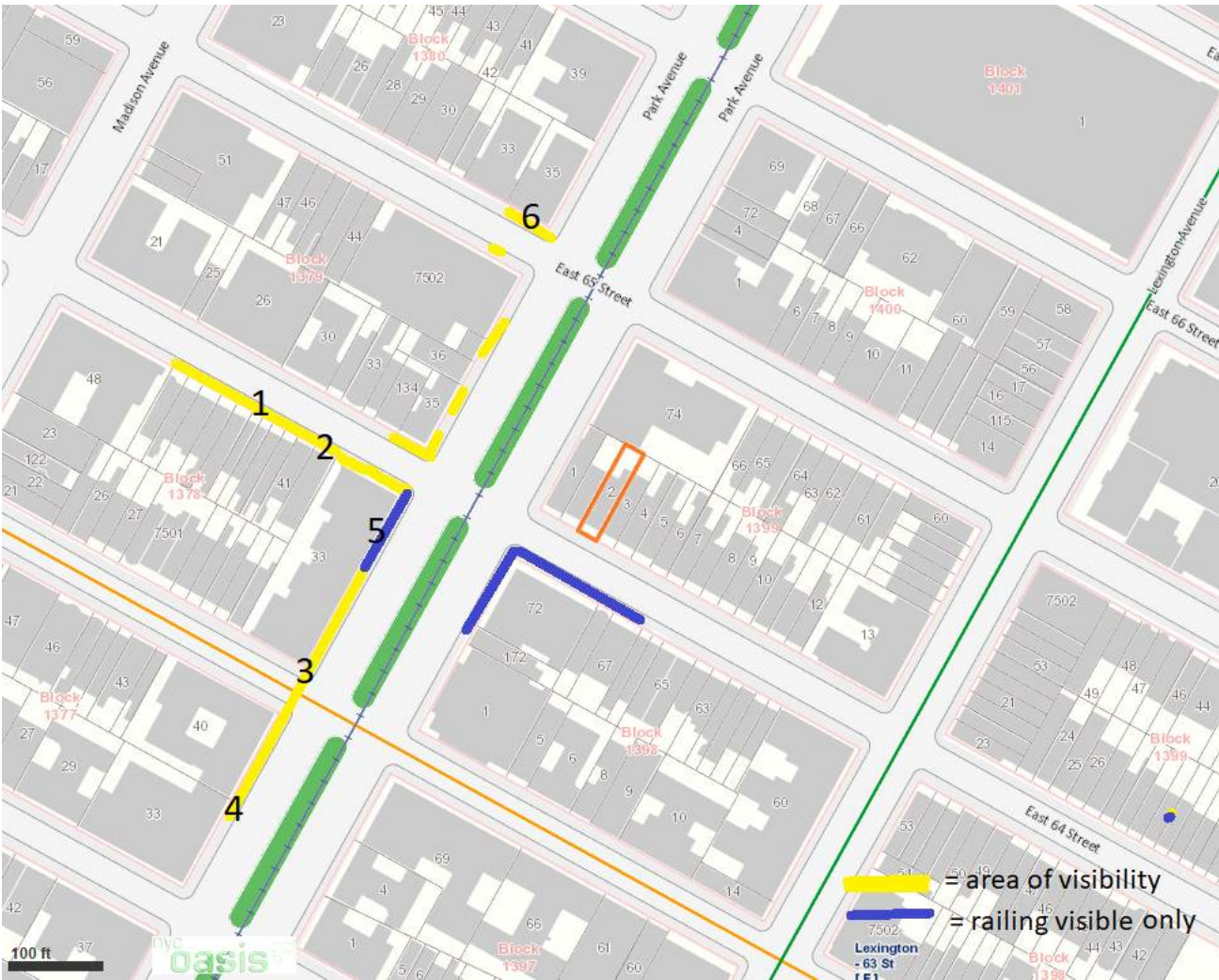


1 SECTION 1 - EXISTING FULL HEIGHT OF BUILDING



2 SECTION 1 - FULL HEIGHT OF BUILDING





View Key



Mockup looking northeast

Views

<div><div><div>Pleskow Architects</div><div>13432 Beach Ave</div><div>Marina del Rey CA 90292</div><div>T 310 577 9300</div><div>F 310 499 5661</div><div>pleskowarchitects.com</div></div><div><div>NOTES: The designs shown and described herein including all technical drawings, graphics, and models thereof, are proprietary and cannot be copied, duplicated or commercially exploited, in whole or in part, without express written permission of Pleskow Architects, Inc. These are available for limited review and evaluation by clients, consultants, contractors, government agencies, vendors and others concerned and in accordance with the Rules, Copyright, Pleskow Architects, Inc. All Rights Reserved. 13432 Beach Ave., Marina del Rey, CA 90292, (310) 577-9300. Upon acceptance and use of this drawing, the Contractor agrees to make and return the Architect of any discrepancies or corrections to the preparation of any, without exception, shop drawings, materials, fixtures, or execution of any work related to the information contained on this document.</div></div></div>	107 E 64th Street, New York, NY 10065		Sheet Title	Views		
			Sheet No.	LPC-13	Date	11/11/2020



View 1



View 1 Close-up

Views



Photo Location Map

<div> <div>PLESKOW</div> <div>Architects</div> </div>	<div> <div>Pleskow Architects</div> <div>13432 Beach Ave</div> <div>Marina del Rey CA 90292</div> <div>T 310 577 9300</div> <div>F 310 499 5661</div> <div>pleskowarchitects.com</div> </div> <div> <small> NOTES: The designs shown and described herein including all text, drawings, graphics, and models thereof, are proprietary and cannot be copied, duplicated or commercially exploited, in whole or in part, without express written permission of Pleskow Architects, Inc. These are available for limited review and evaluation by clients, consultants, contractors, government agencies, vendors and others concerned and in accordance with the Rules, Copyright, Pleskow Architects, Inc. All Rights Reserved. 13432 Beach Ave., Marina del Rey, CA 90292, (310) 577-9300. Upon acceptance and use of this drawing, the Contractor agrees to make and return the Architect of any discrepancies or corrections to the preparation of any, without exception, shop drawings, materials, fixtures, or execution of any work related to the information contained on this document. </small> </div>	<div> <div>107 E 64th Street,</div> <div>New York, NY 10065</div> </div>	<div>Sheet Title</div>	<div>Views</div>		
			<div>Sheet No.</div>	<div>LPC-15</div>	<div>Date</div>	<div>11/11/2020</div>



View 1



View 1 Close-up

Views

Photo Location Map





View 2



View 2 Close-up

Views



Photo Location Map

<div> <div>PLESKOW</div> <div>Architects</div> </div>	<div> <div>Pleskow Architects</div> <div>13432 Beach Ave</div> <div>Marina del Rey CA 90292</div> <div>T 310 577 9300</div> <div>F 310 499 5661</div> <div>pleskowarchitects.com</div> </div> <div> <small> NOTES: The designs shown and described herein including all text, drawings, graphics, and models thereof, are proprietary and cannot be copied, duplicated or commercially exploited, in whole or in part, without express written permission of Pleskow Architects, Inc. These are available for limited review and evaluation by clients, consultants, contractors, government agencies, vendors and others concerned and in accordance with the terms of the contract. Pleskow Architects, Inc. All Rights Reserved. 13432 Beach Ave, Marina del Rey, CA 90292, (310) 577-9300. Upon acceptance and use of this drawing, the Contractor agrees to make and return the Architect of any discrepancies or corrections to the preparation of any, without exception, shop drawings, materials, fixtures, or execution of any work related to the information contained on this document. </small> </div>	<div>107 E 64th Street,</div> <div>New York, NY 10065</div>				<div>Sheet Title</div> <div>Views</div>	<div>Sheet No.</div> <div>LPC-17</div>	<div>Date</div> <div></div>	<div>11/11/2020</div>
---	--	---	--	--	--	---	--	-----------------------------	-----------------------



View 2



View 2 Close-up

Views



Photo Location Map

<div><div><div>PLESKOW</div><div>Architects</div></div><div><div>13432 Beach Ave</div><div>Marina del Rey CA 90292</div><div>T 310 577 9300</div><div>F 310 499 5661</div><div>pleskowarchitects.com</div></div></div>	<div>107 E 64th Street, New York, NY 10065</div>			Sheet Title	Views		
				Sheet No.	LPC-18	Date	11/11/2020



View 3



View 3 Close-up

Views



Photo Location Map



View 3



View 3 Close-up

Views



Photo Location Map



105 E 64th Approved Rooftop Addition

Views



View 3 Close-up with 105 E 64th Approved Rooftop Addition



Photo Location Map



View 4



View 4 Close-up

Views



Photo Location Map



View 4



View 4 Close-up

Views



Photo Location Map



View 6

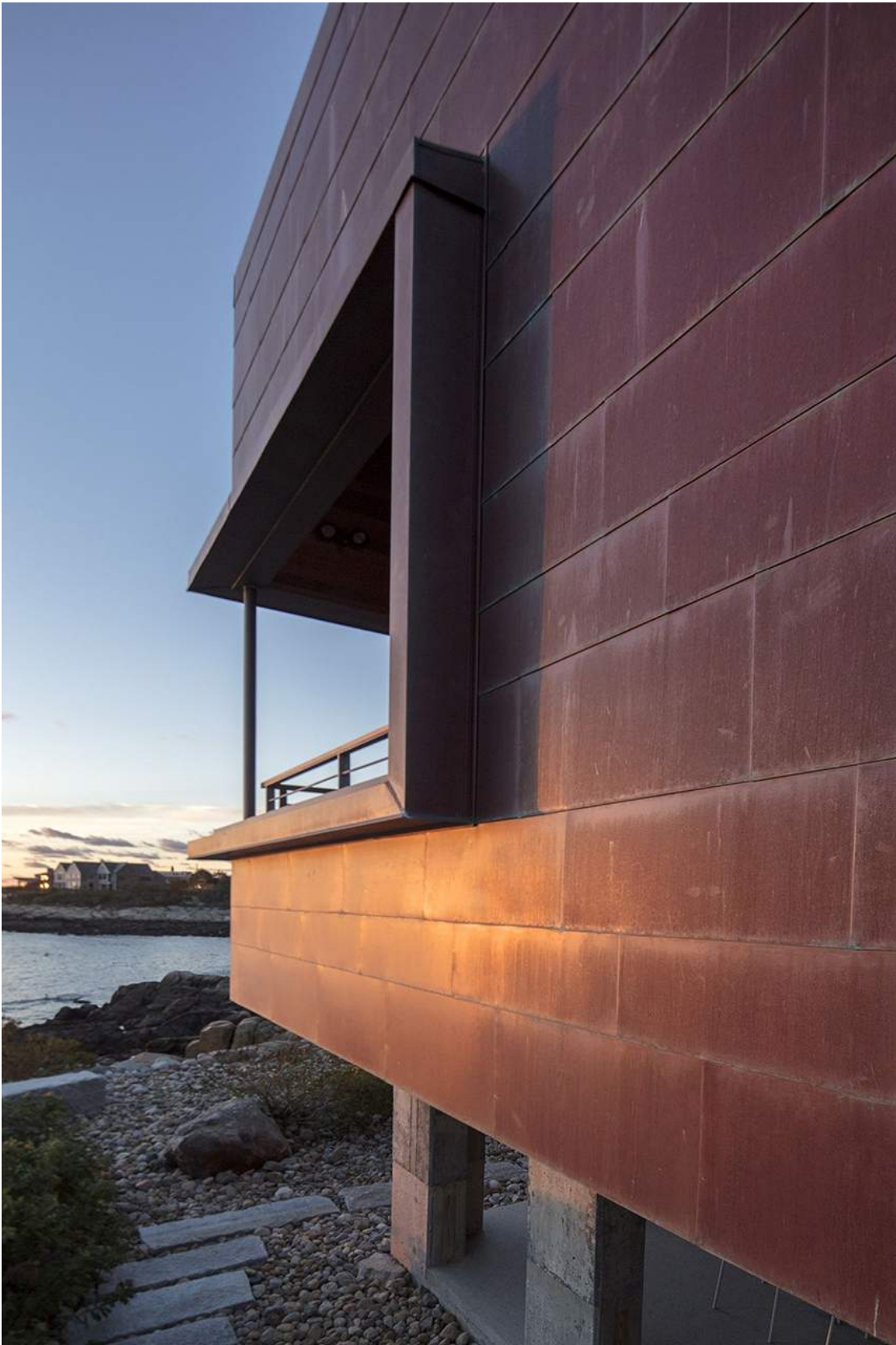


View 6 Close-up

Views



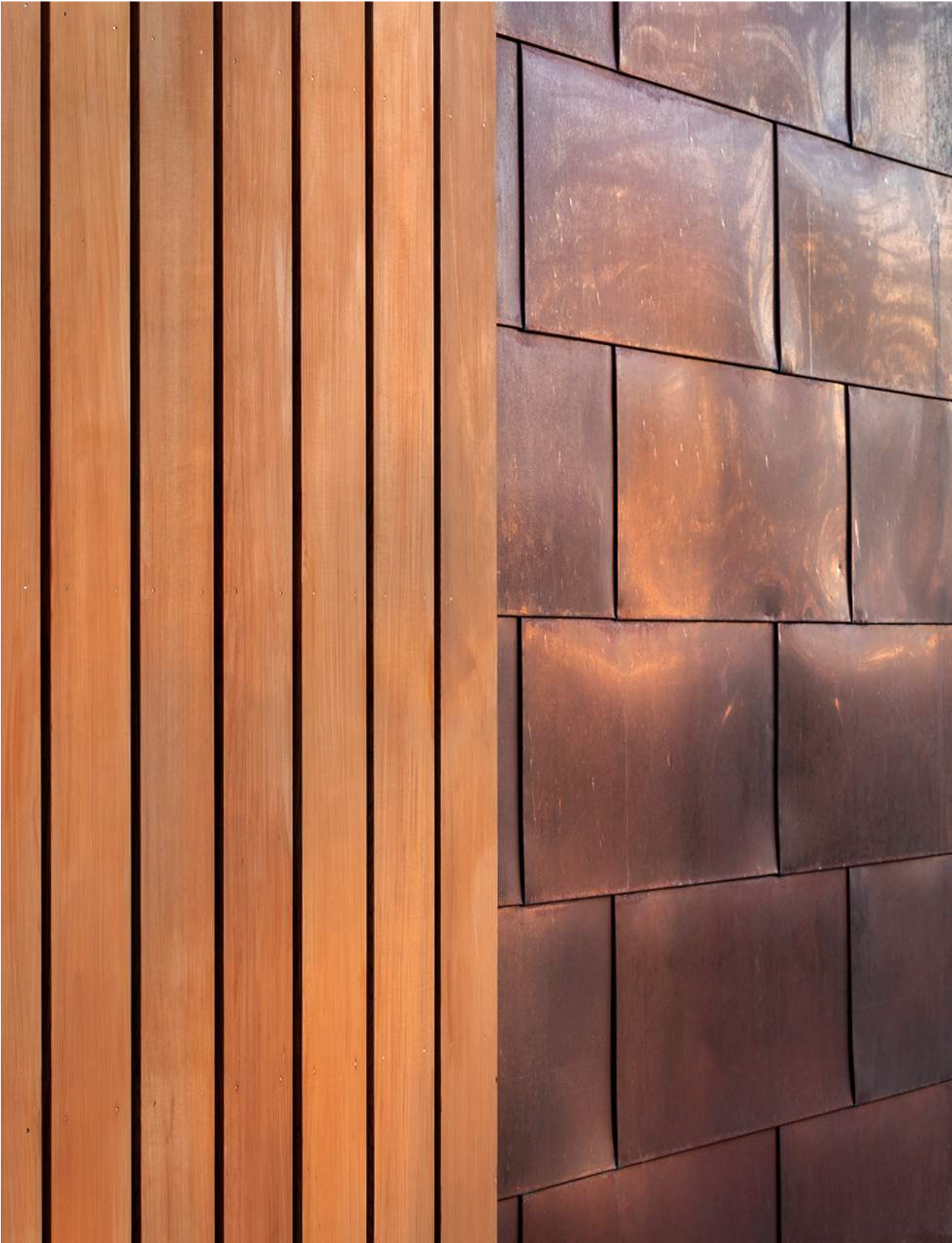
Photo Location Map



Material Reference

<div><div>PLESKOW</div><div>Architects</div><div>13432 Beach Ave Marina del Rey CA 90292 T 310 577 9300 F 310 499 5661 pleskowarchitects.com</div><div>NOTES: The designs shown and described herein including all technical drawings, graphics, and models thereof, are proprietary and cannot be copied, duplicated or commercially exploited, in whole or in part, without express written permission of Pleskow Architects, Inc. These are available for limited review and evaluation by clients, consultants, contractors, government agencies, vendors and others concerned and in accordance with the Rules, Copyright, Pleskow Architects, Inc. All Rights Reserved. 13432 Beach Ave, Marina del Rey, CA 90292, (310) 577-9300 Upon acceptance and use of this drawing, the Contractor agrees to make and return the Architect of any discrepancies or corrections prior to the preparation of any, without exception, shop drawings, samples, layouts, or execution of any work related to the information contained on this document.</div></div>	Pleskow Architects 13432 Beach Ave Marina del Rey CA 90292 T 310 577 9300 F 310 499 5661 pleskowarchitects.com			107 E 64th Street, New York, NY 10065			Sheet Title	Material Reference		
	Sheet No.	LPC-26	Date	11/11/2020						

Material Reference





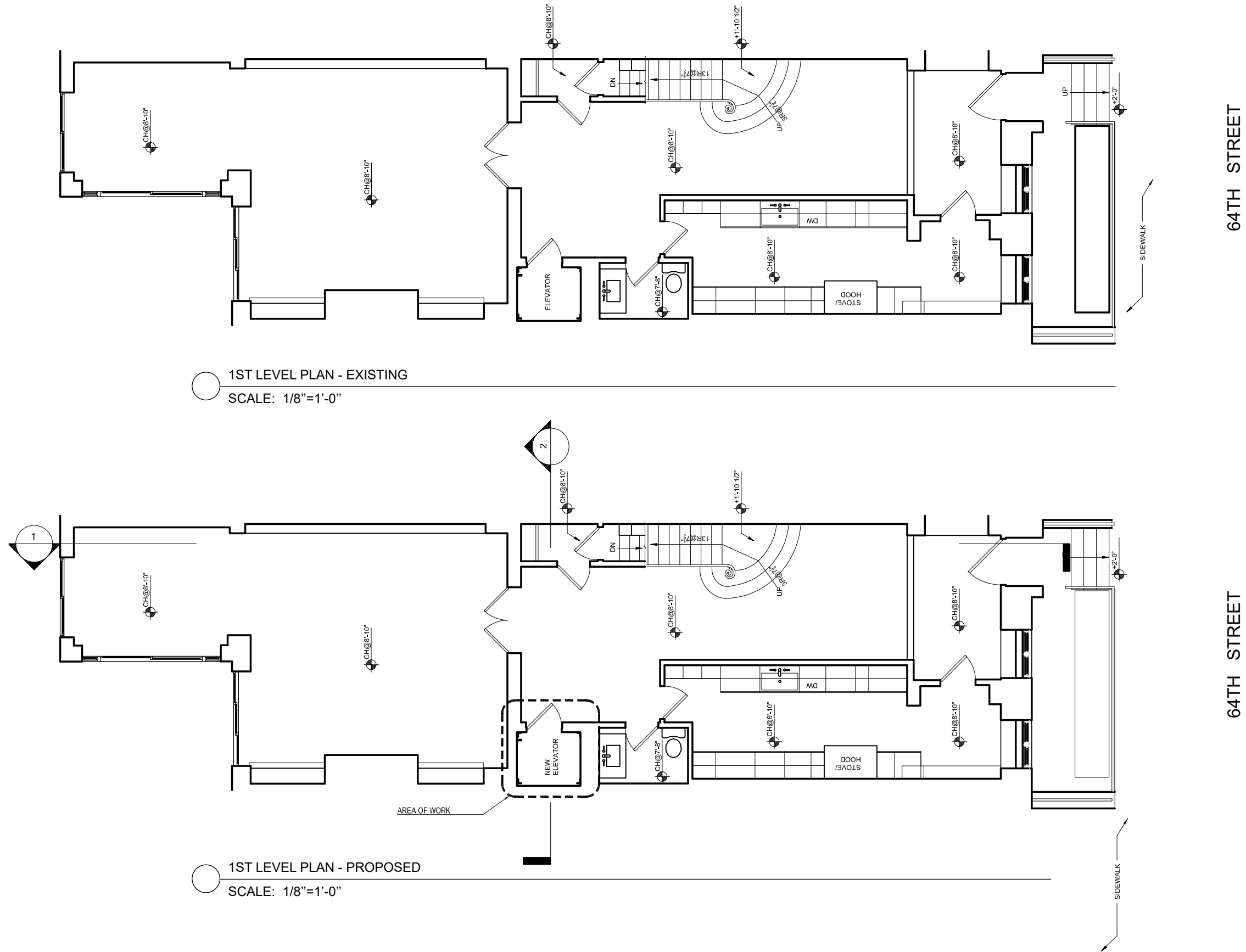
Pleskow Architects
13432 Beach Ave
Marina del Rey CA 90292
T 310 577 9300
F 310 499 5661
pleskowarchitects.com

NOTES: The designs shown and described herein including all technical drawings, graphics, and models thereof, are proprietary and cannot be copied, duplicated or commercially exploited in whole or in part without express written permission of Pleskow Architects, Inc. These are available for limited review and evaluation by clients, consultants, contractors, government agencies, vendors and others concerned with the project. Copyright © Pleskow Architects, Inc. All Rights Reserved. 13432 Beach Ave., Marina del Rey, CA 90292, (310) 577-9300. Upon acceptance and use of this drawing, the Contractor agrees to release and defend the Architect of any damages or liabilities prior to the preparation of any, without exception, shop drawings, materials, fixtures, or execution of any work related to the information contained on this document.

107 E 64th Street,
New York, NY 10065

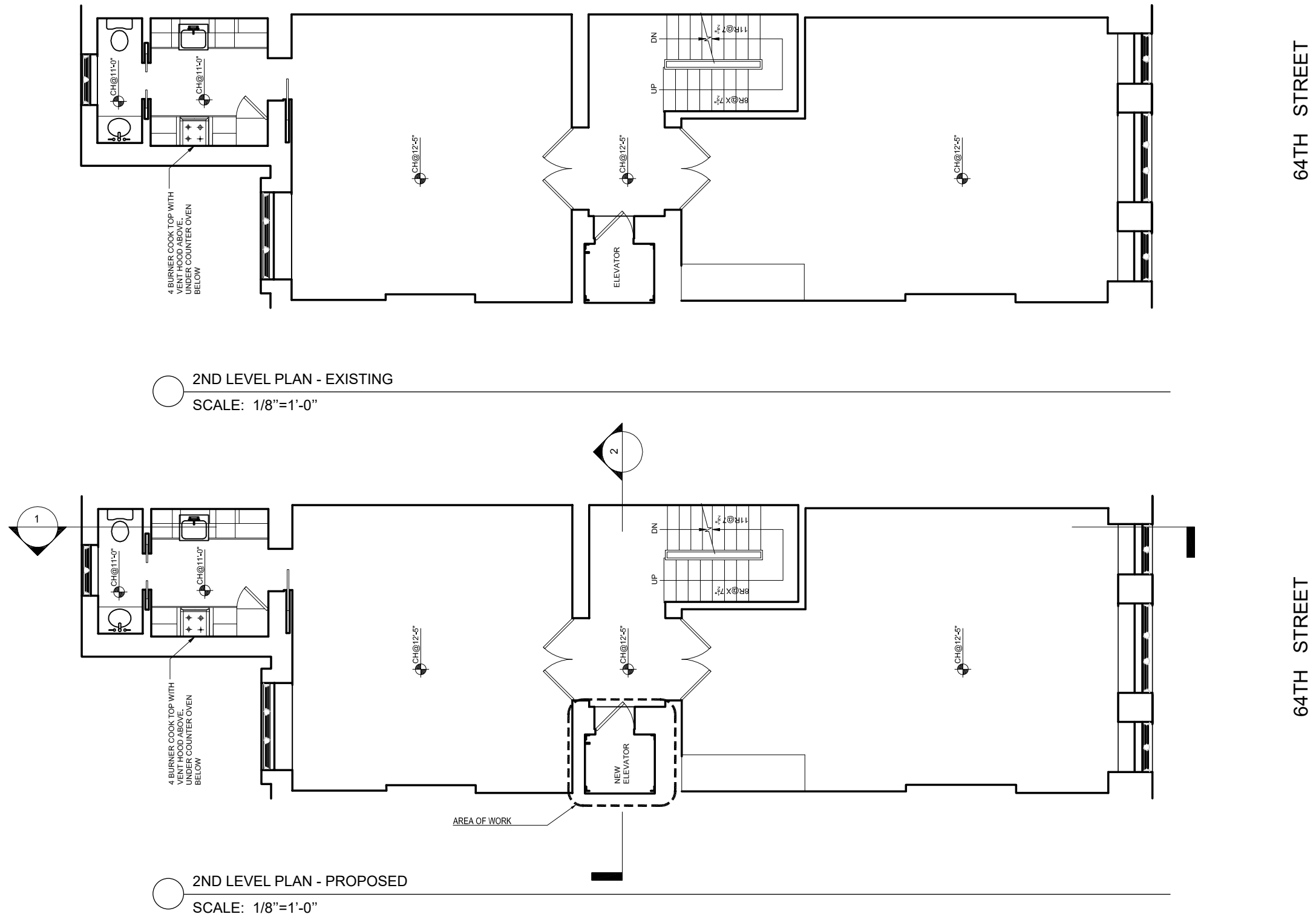
Sheet Title	3D View		
Sheet No.	LPC-28	Date	11/11/2020

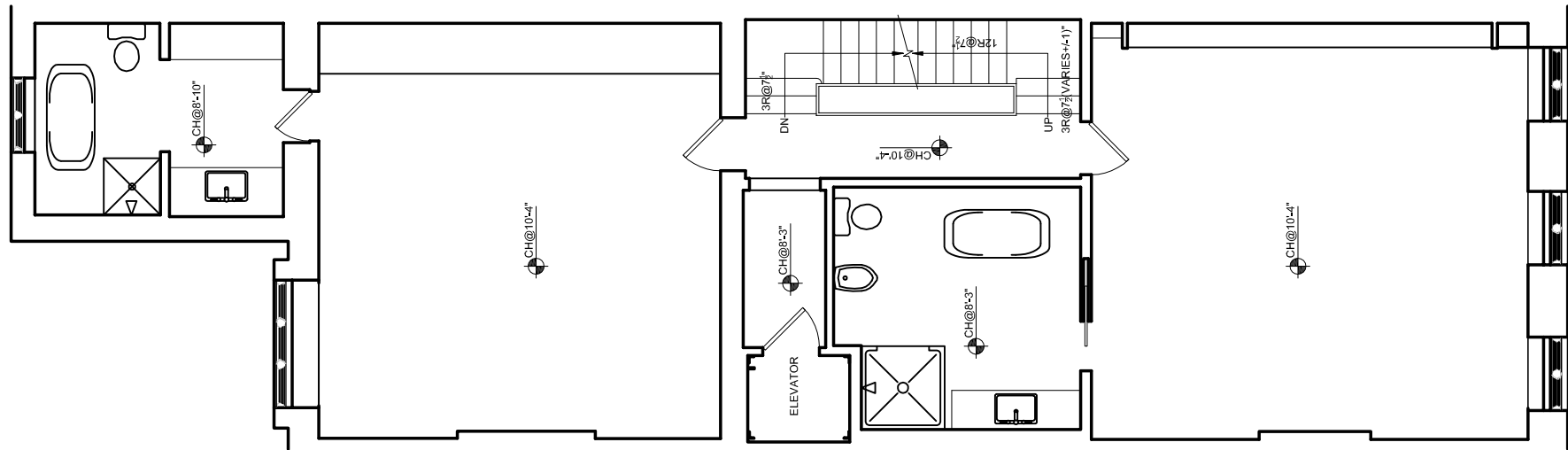
Appendix



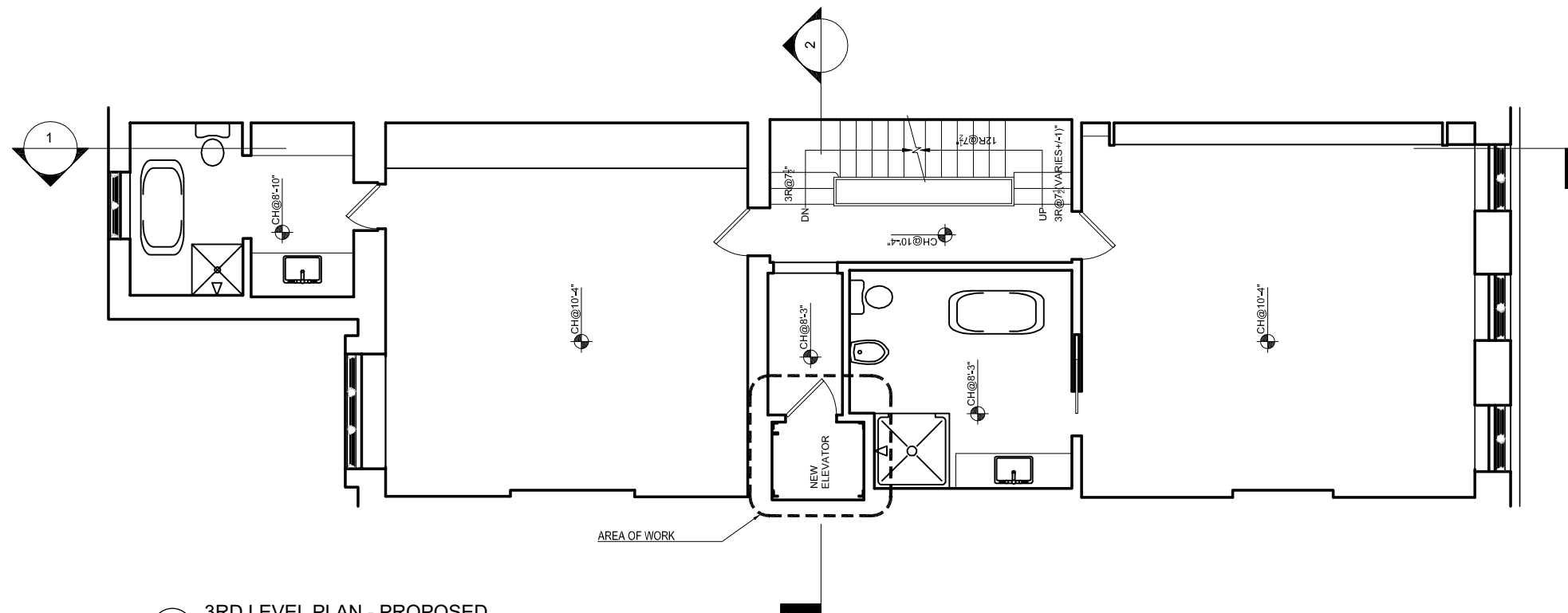
1ST LEVEL PLAN - EXISTING
SCALE: 1/8"=1'-0"

1ST LEVEL PLAN - PROPOSED
SCALE: 1/8"=1'-0"





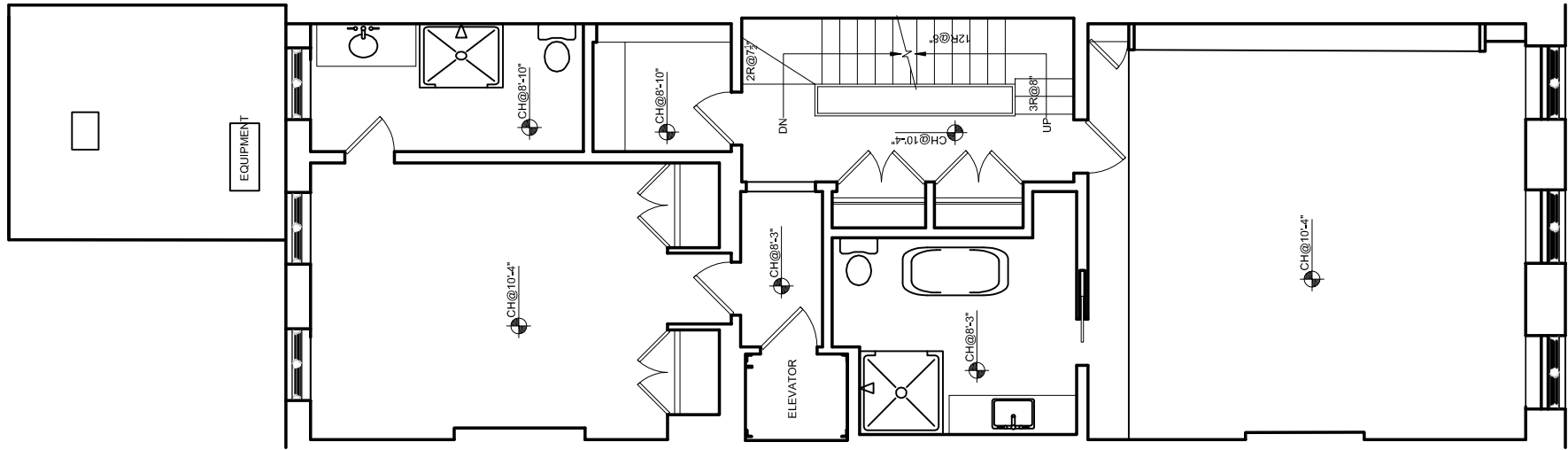
3RD LEVEL PLAN - EXISTING
SCALE: 1/8"=1'-0"



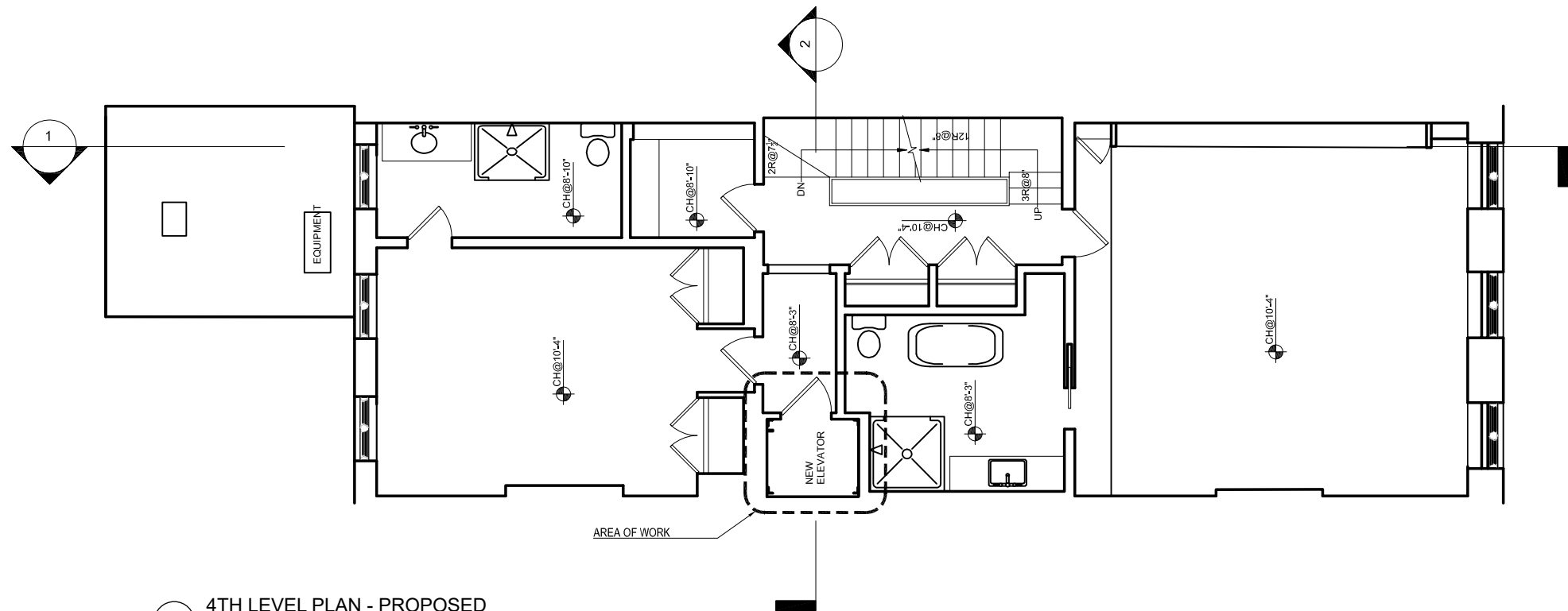
3RD LEVEL PLAN - PROPOSED
SCALE: 1/8"=1'-0"

64TH STREET

64TH STREET



4TH LEVEL PLAN - EXISTING
SCALE: 1/8"=1'-0"



4TH LEVEL PLAN - PROPOSED
SCALE: 1/8"=1'-0"

64TH STREET

64TH STREET

