

135 EAST 71ST STREET

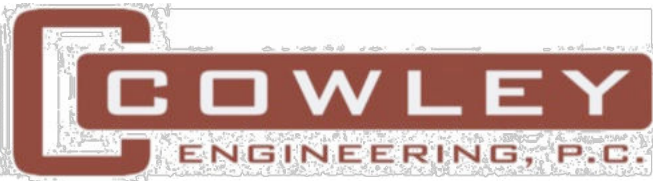
BASE BUILDING INFORMATION:

BLOCK: 1406 LOT:17
135 EAST 71ST STREET, NEW YORK, NY 10021

CONSTRUCTED: 1955
DESIGNATED: 1981
HISTORIC DISTRICT: UPPER EAST SIDE HISTORIC DISTRICT (71ST ST. ONLY)

ENGINEER:

1100 SUMMER ST, #106
STAMFORD, CT 06905
(203) 658-8858

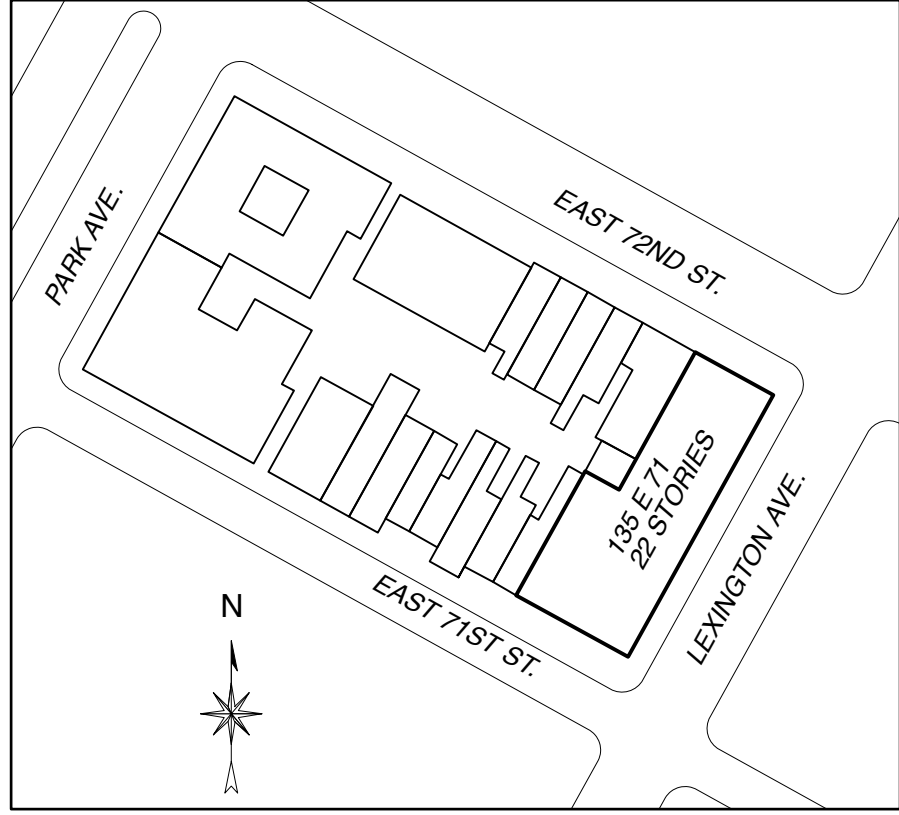


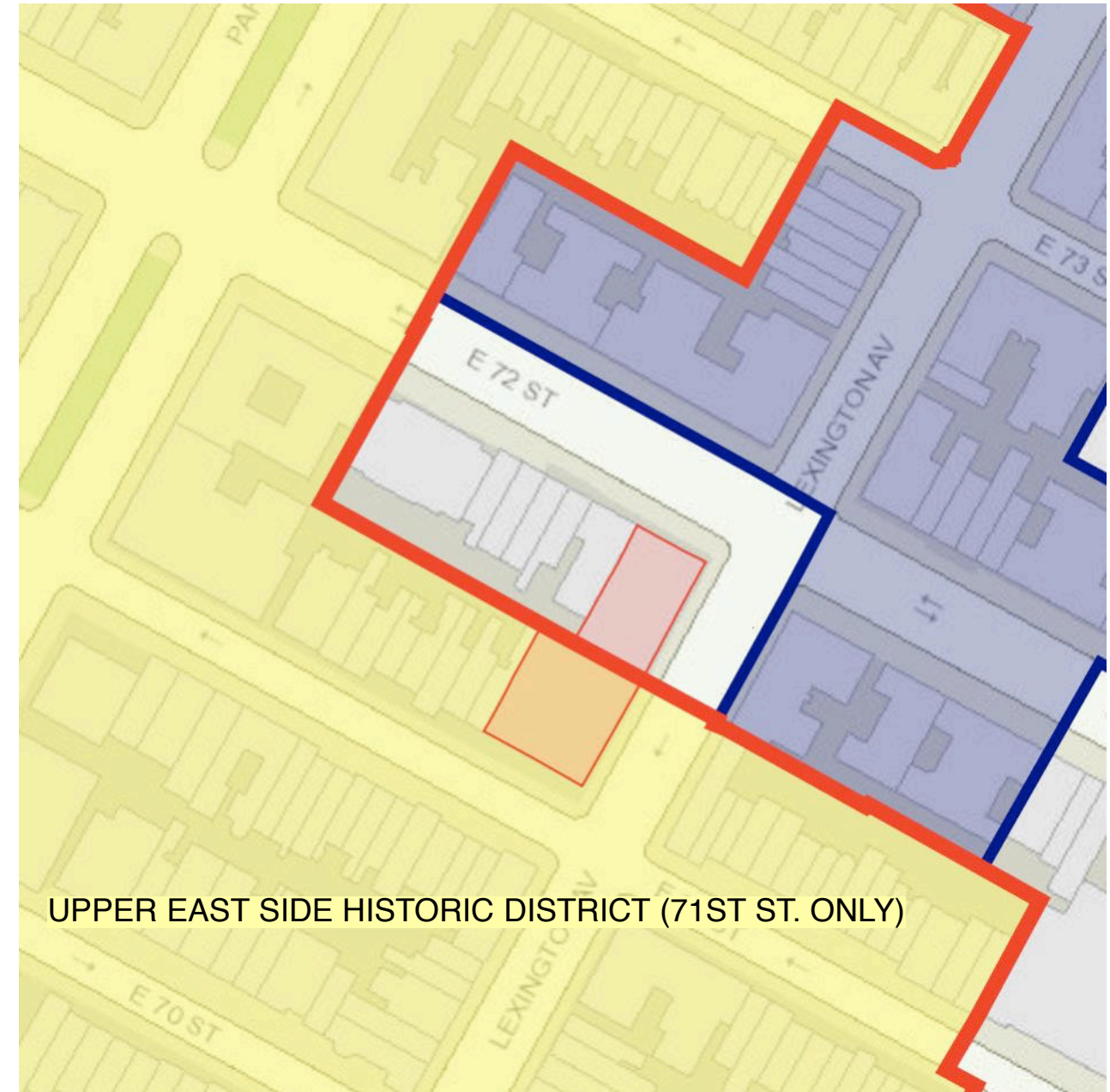
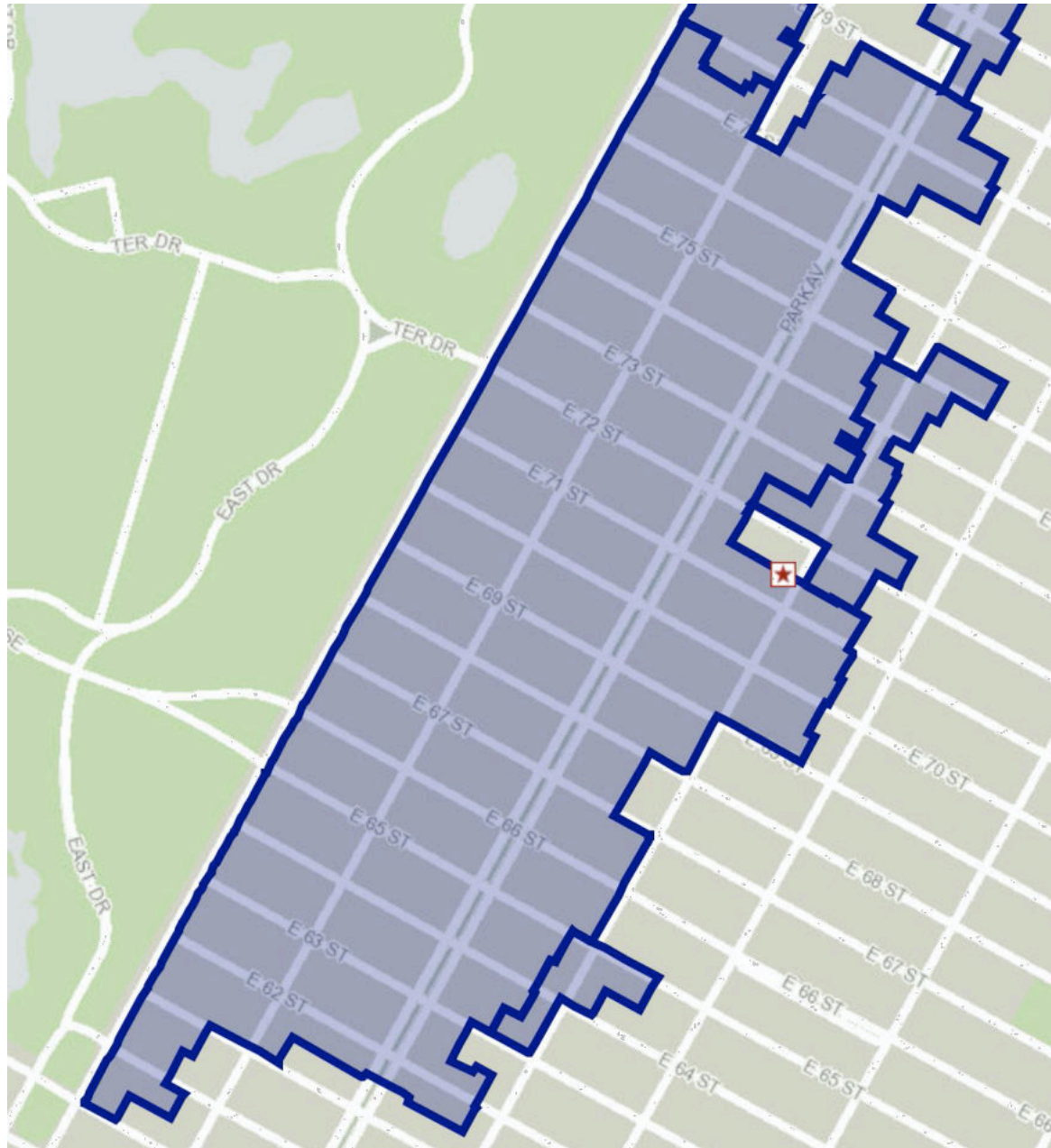
LICENSED PROFESSIONAL ENGINEERS IN NY, NJ, CT, PA, MD, GA, TX AND FL.
STRUCTURAL ENGINEERING • FORENSIC ENGINEERING • BUILDING MAINTENANCE

DESIGNER:



FORBES ERGAS DESIGN ASSOCIATES
13 East 37th Street Suite 7F
New York, NY 10016





UPPER EAST SIDE HISTORIC DISTRICT (71ST ST. ONLY)

BUILDING LOCATION

135 EAST 71ST STREET

LOWER LEVEL RECLADDING
STOREFRONT REPLACEMENT
SIGNAGE MASTER PLAN
WINDOW MASTER PLAN AMENDMENT



1980'S TAX PHOTO (71ST STREET)



CURRENT PHOTO (71ST STREET)

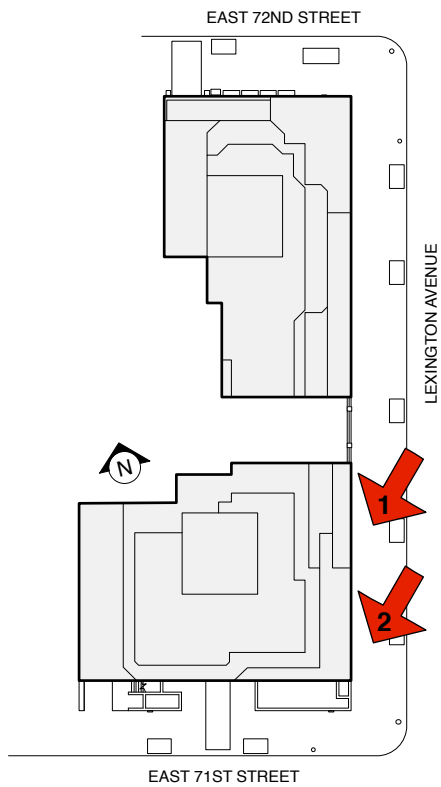
HISTORIC / CURRENT PHOTOS
LANDMARKED PORTION

135 EAST 71ST STREET

LOWER LEVEL RECLADDING
STOREFRONT REPLACEMENT
SIGNAGE MASTER PLAN
WINDOW MASTER PLAN AMENDMENT



1. LEXINGTON AVENUE FACING SOUTH



2. LEXINGTON AVENUE STOREFRONT

EXISTING CONDITIONS
LANDMARKED SOUTH BUILDING

135 EAST 71ST STREET

- LOWER LEVEL RECLADDING
- STOREFRONT REPLACEMENT
- SIGNAGE MASTER PLAN
- WINDOW MASTER PLAN AMENDMENT



1. CORNER LEXINGTON / 71ST STREET

2. 71ST STREET AT ENTRANCE

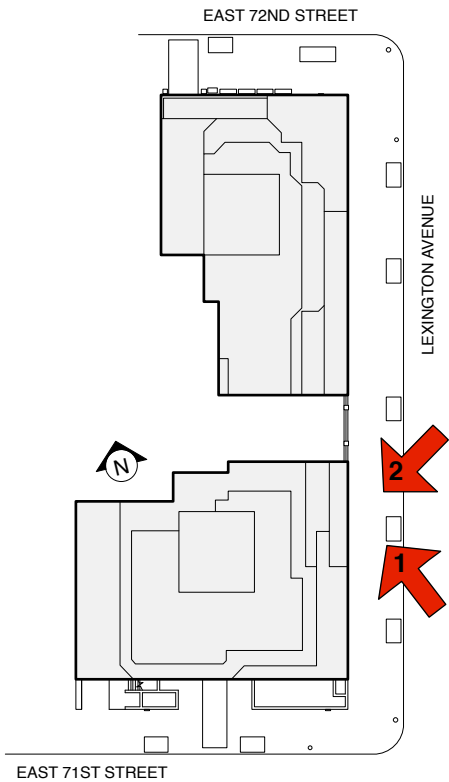


3. 71ST STREET AT DR. OFFICE





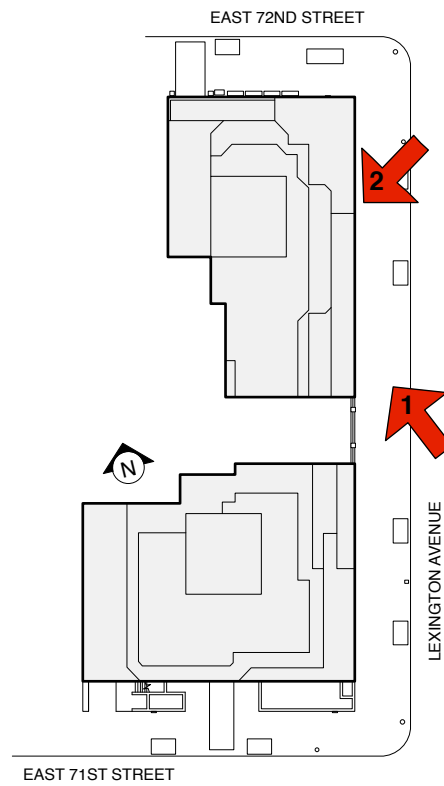
1. LEXINGTON AVENUE STOREFRONTS



2. LEXINGTON AVENUE STOREFRONTS



1. LEXINGTON AVENUE FACING NORTH



2. LEXINGTON AVENUE STOREFRONT



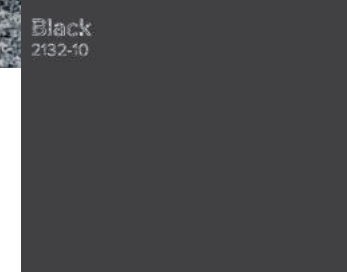
ORIGINAL RENDERING
SHOWING GRAY GRANITE AT LOWER LEVEL

PROPOSED GRANITE CLADDING
BUILDING FACADE / PLANTERS

PROPOSED GRANITE
COLUMNS



EXISTING BRICK FACADE TO REMAIN



PROPOSED WINDOW / STOREFRONT PAINT



NOTATION ON RENDERING



ENGRAVING AT 71ST STREET

PROPOSED RENOVATION

135 EAST 71ST STREET

LOWER LEVEL RECLADDING
STOREFRONT REPLACEMENT
SIGNAGE MASTER PLAN
WINDOW MASTER PLAN AMENDMENT

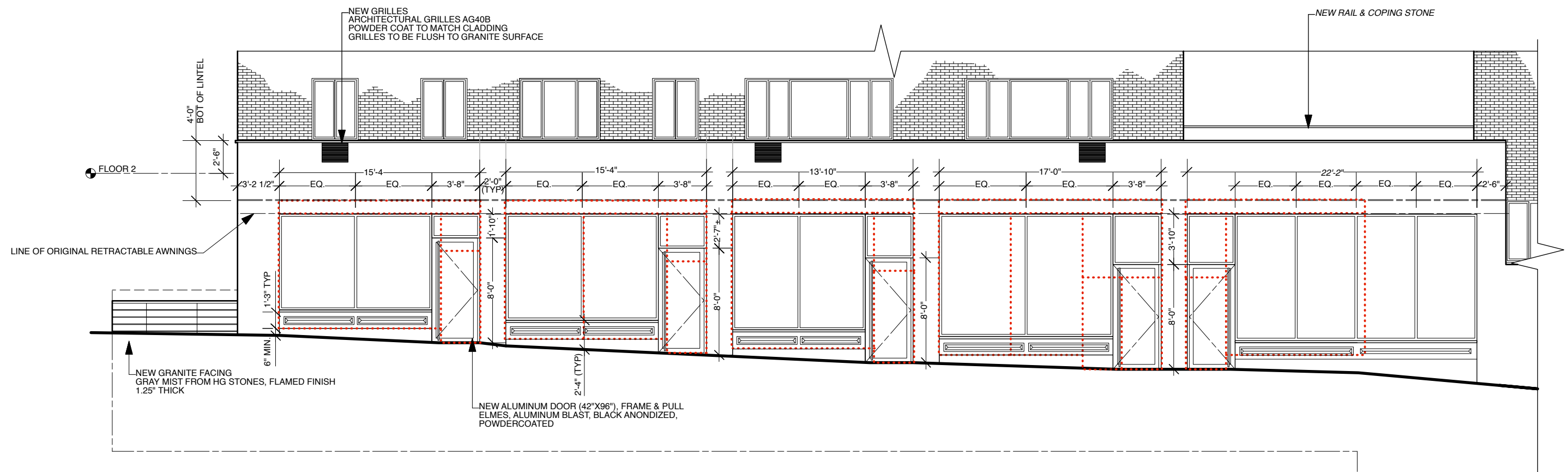


PROPOSED 71ST STREET ELEVATION

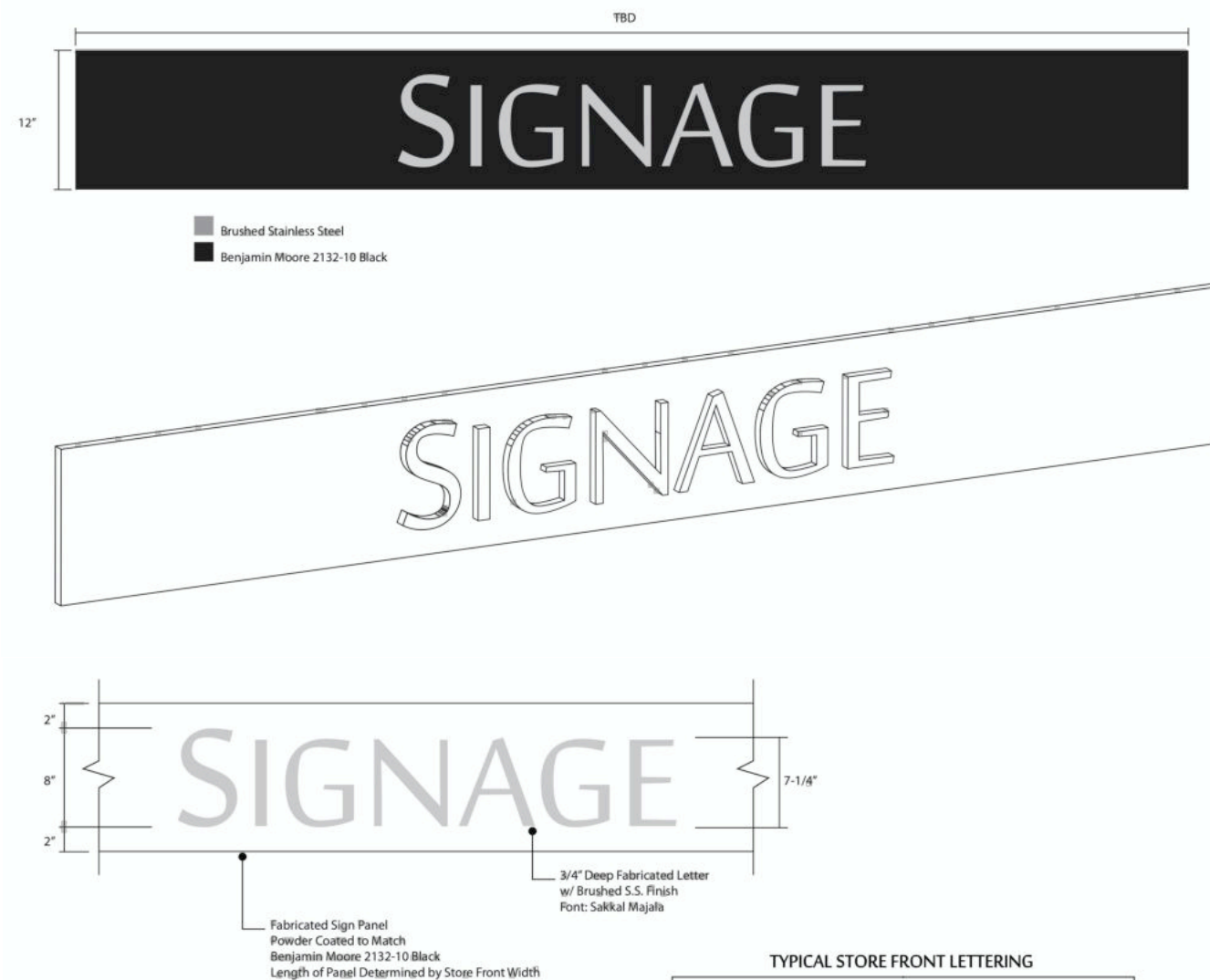
135 EAST 71ST STREET

LOWER LEVEL RECLADDING
STOREFRONT REPLACEMENT
SIGNAGE MASTER PLAN
WINDOW MASTER PLAN AMENDMENT

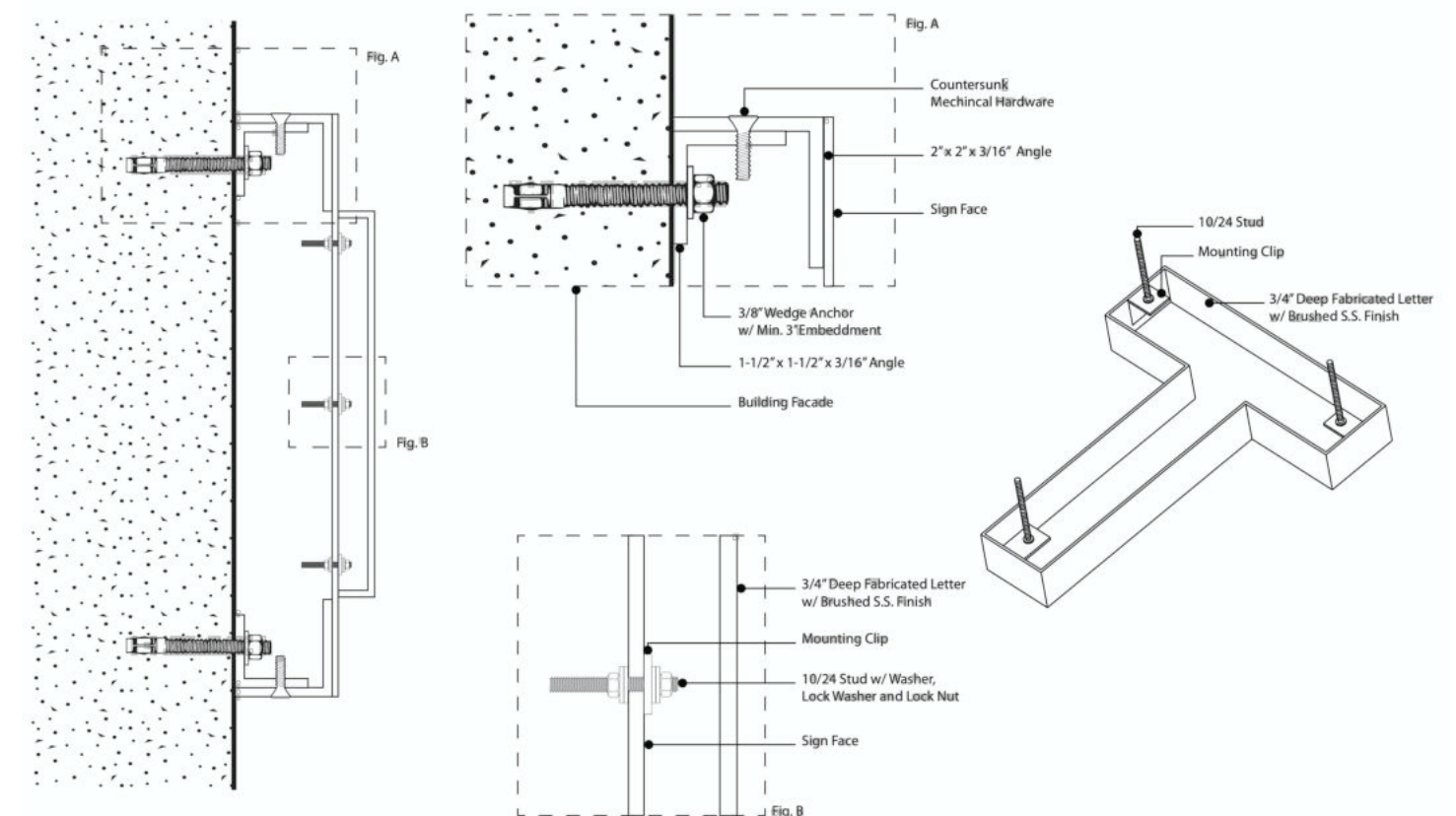


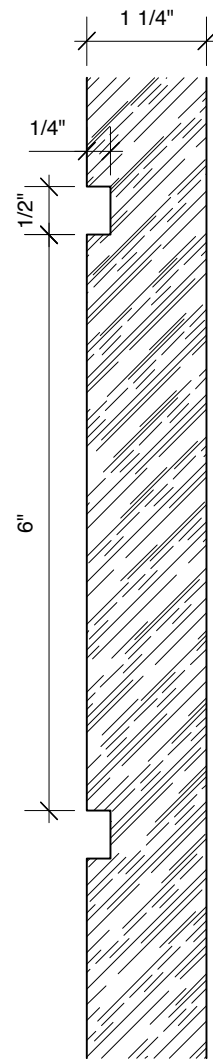


LEXINGTON AVENUE - SOUTH
DIMENSIONS AT LANDMARKED STOREFRONTS

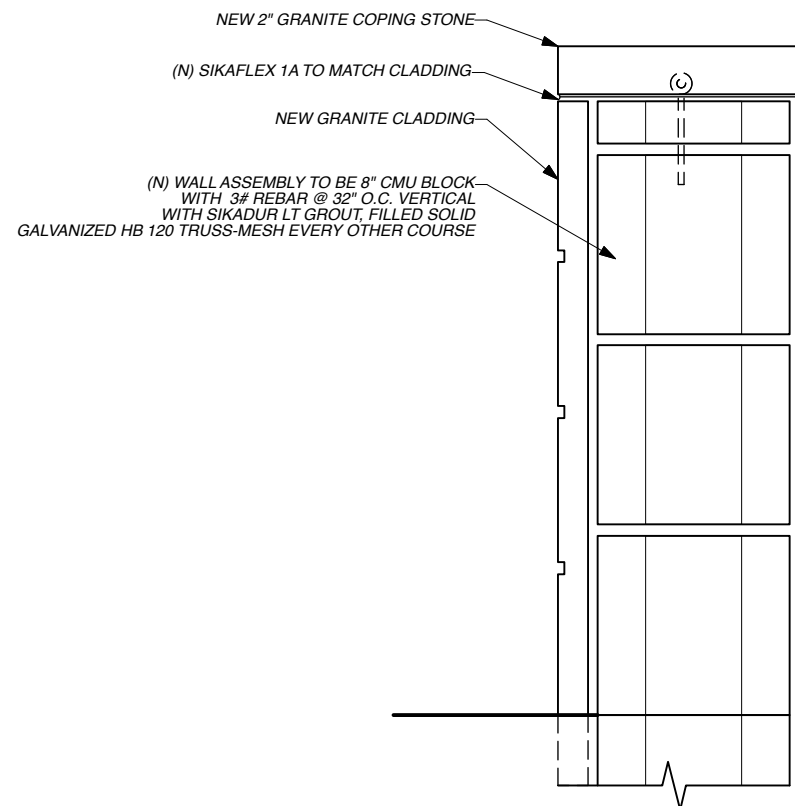


SIGNAGE INSTALLATION DETAILS

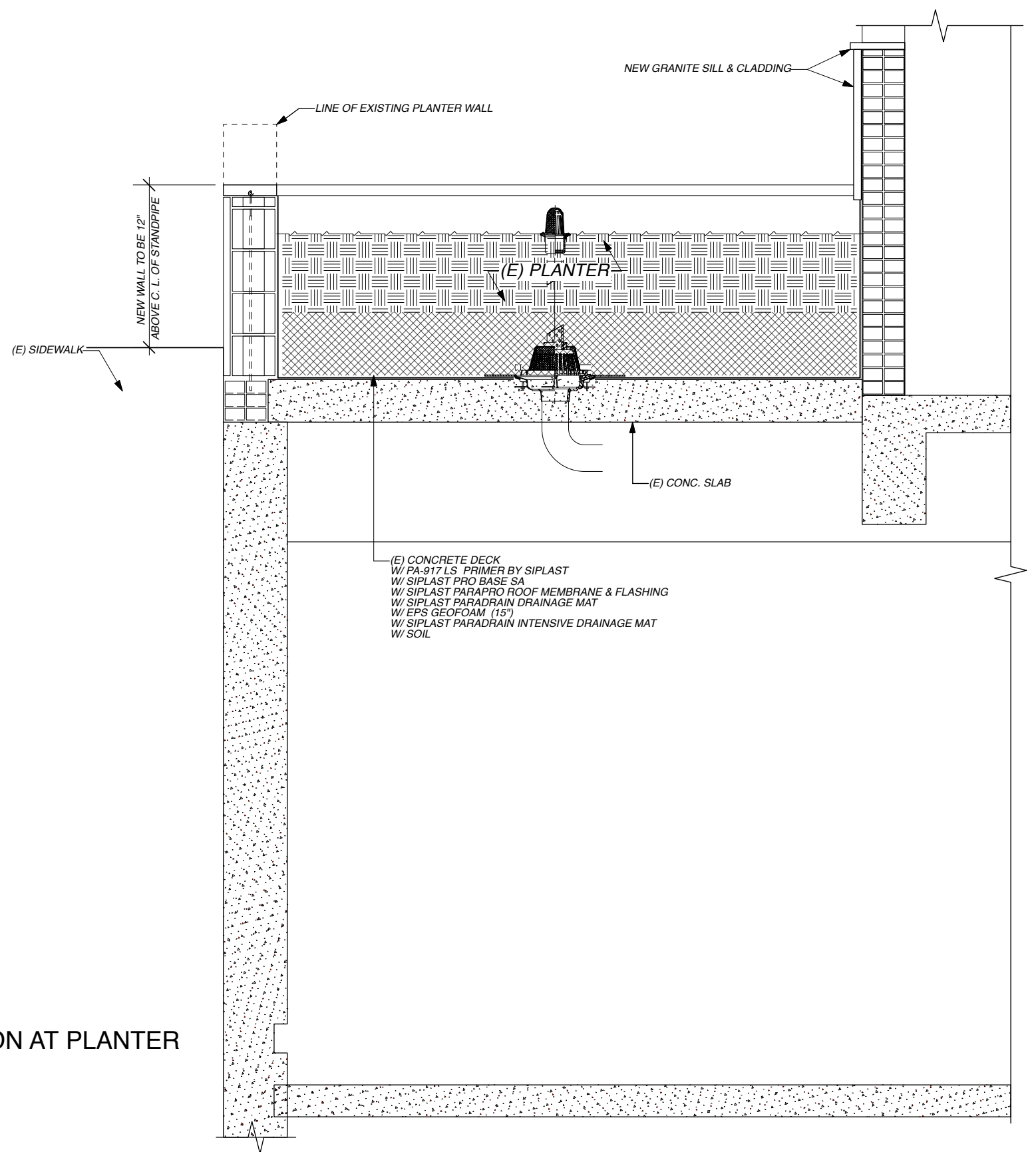




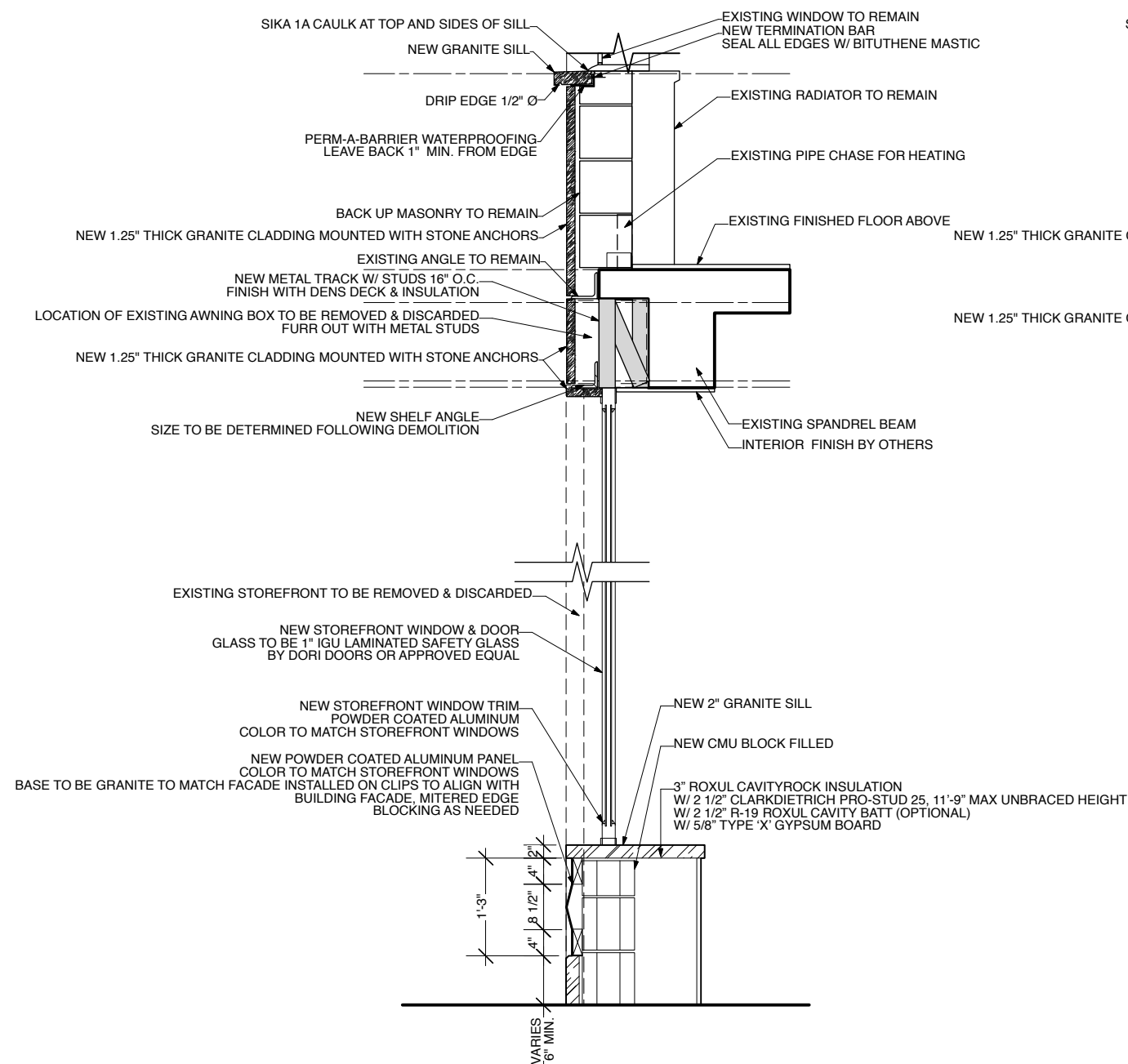
DETAIL AT COLUMN / PLANTER CLADDING



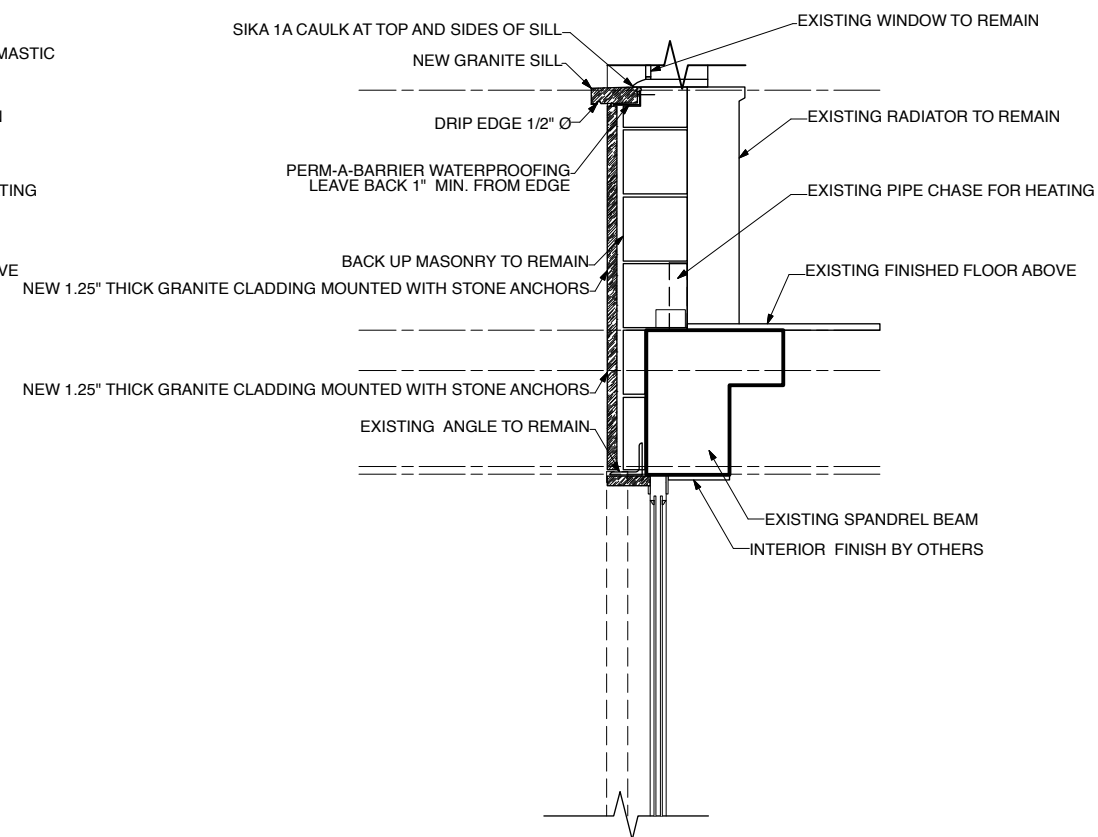
DETAIL AT PLANTER WALL



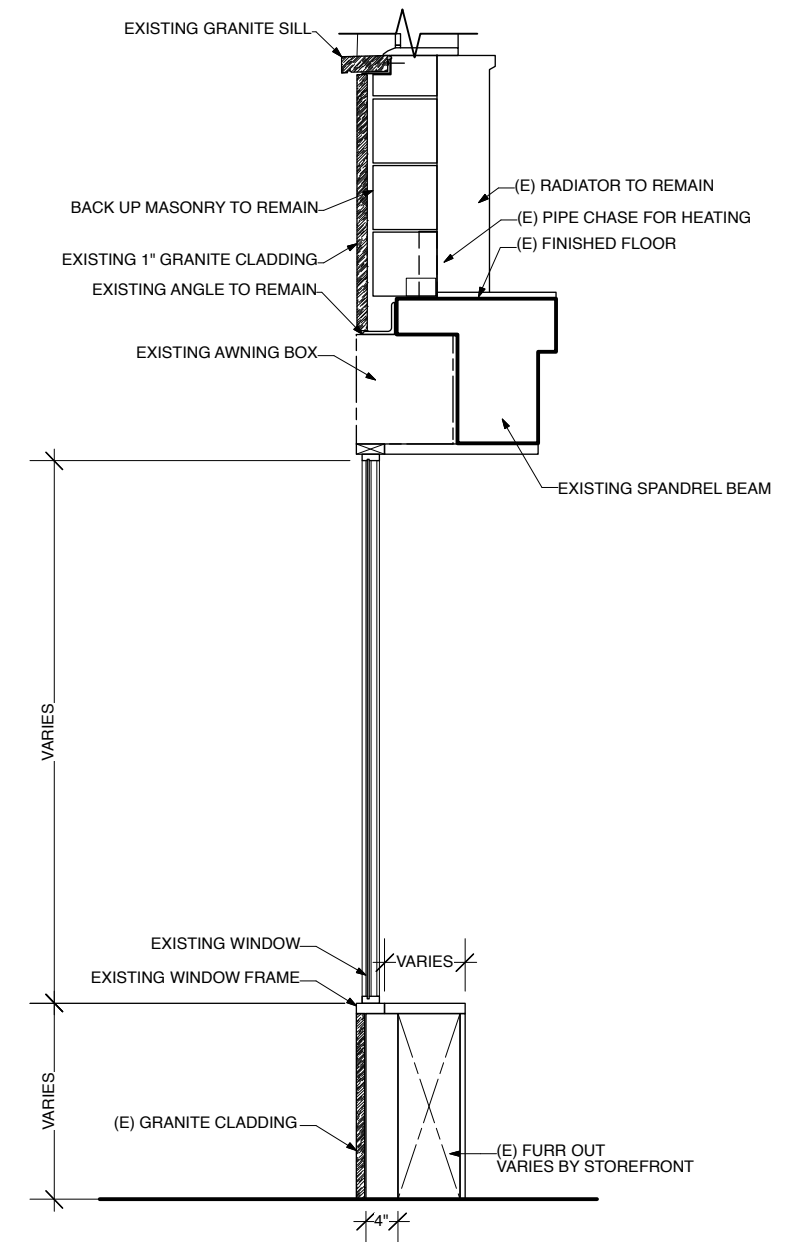
SECTION AT PLANTER



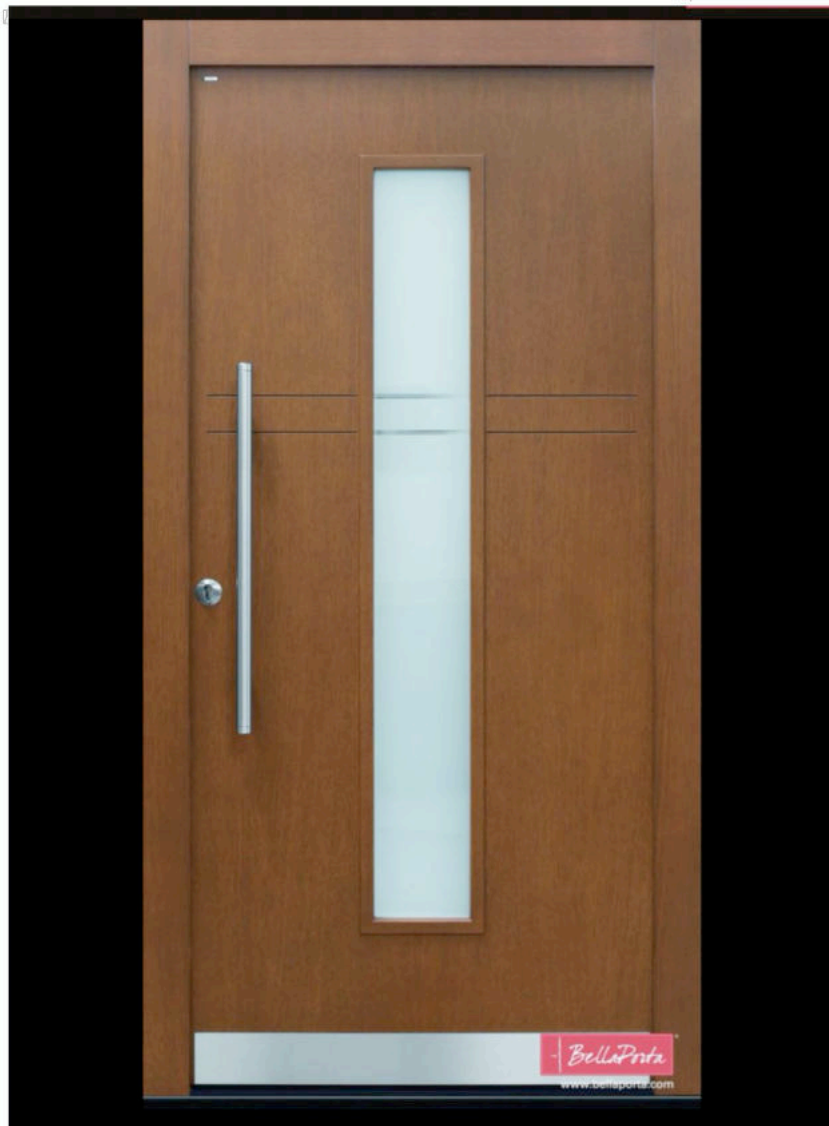
SECTION AT NEW STOREFRONT



SECTION AT NEW STOREFRONT



SECTION AT EXISTING STOREFRONT



PROPOSED DOOR AT 71ST STREET OFFICE

Urban Indoor/Outdoor LED Wall Sconce By Modern Forms

LUMENS
LIGHT AND LIVING
Call Us 877.445.4486

Product Options

Finish: Black, Bronze, Graphite
Size: Small, Medium, Large

Details

- Aluminum shade
- Aluminum body
- Dimmable with electronic low voltage (ELV) dimmer (not included)
- LED Average Rated Life: 50,000 hours
- LED Color Temperature: 3000K
- CRI: 85
- Lumens: 720 (Small), 960 (Medium), 1200 (Large)
- UL Listed Wet
- ADA Compliant
- Dark Sky Compliant
- Material: Aluminum
- Shade Material: Aluminum
- Electronic low voltage (ELV) Dimmer
- ADA compliant, Dark Sky compliant
- Made In China

Dimensions

Small Option Fixture: Height 10", Width 7", Depth 2"
Medium Option Fixture: Height 16", Width 7", Depth 2"
Large Option Fixture: Height 22"

Lighting

- Small option utilizes 12 Watt 120 Volt LED array (integrated).
- Medium option utilizes 16 Watt 120 Volt LED array (integrated).
- Large option utilizes 20 Watt 120 Volt LED array (integrated).



Shown in Bronze finish, Medium size, lit



PROPOSED EXTERIOR SCONCES