



East (front) elevation at Park Avenue

Americas Society
Historic Restoration including
Roofing Replacement & Façade Repair
680 Park Avenue
New York, NY 10065

680 Park Avenue – Upper East Side Historic District
Historic Restoration / Façade Repairs & Roofing Replacement

Photographs received from
Landmarks Preservation Commission



Slide # 741
580-690 Park Avenue, Man.
Upper East Side H.D.

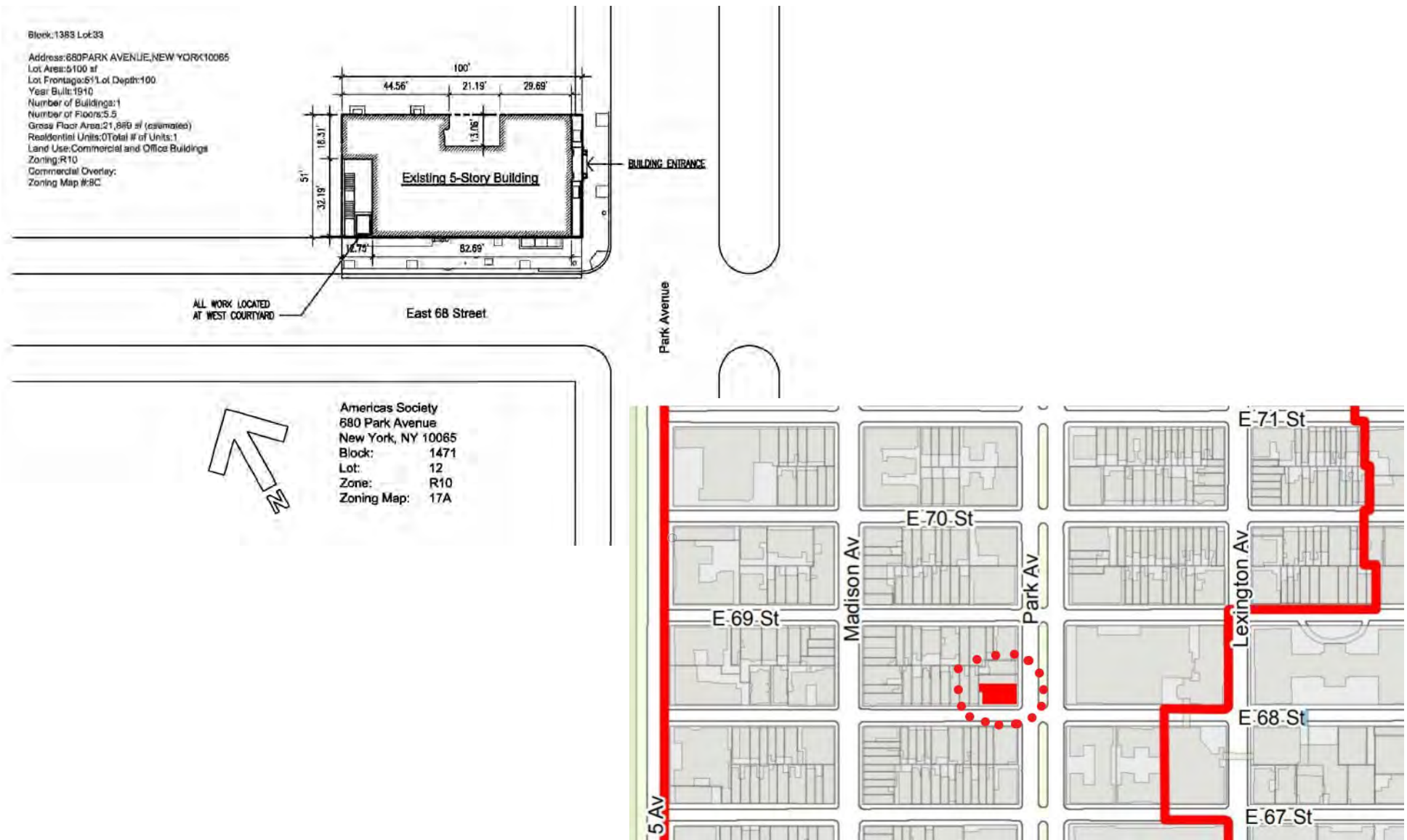


Slide # 742
680-686 Park Avenue, Man.
Upper East Side H.D.



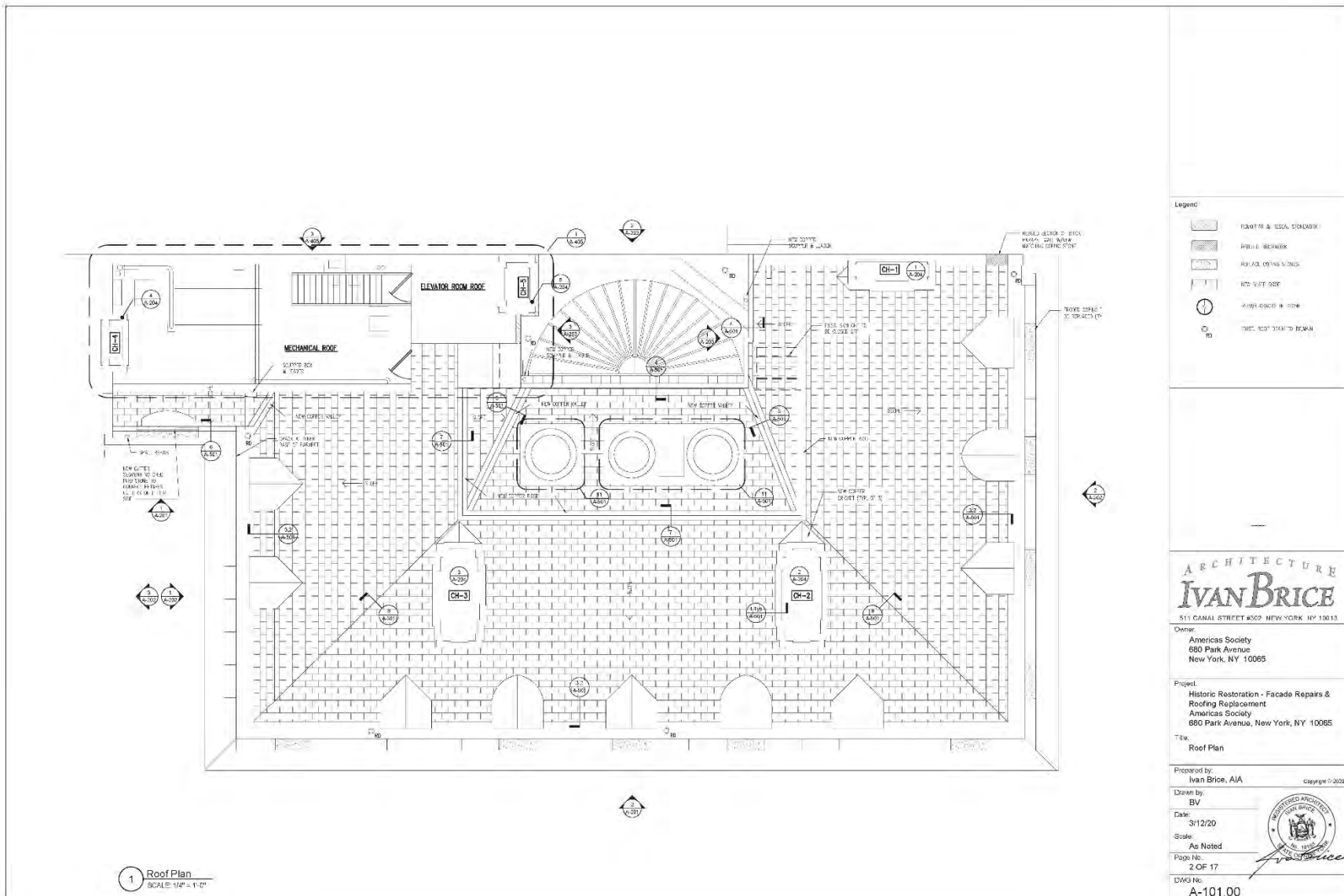
Slide # 743
680 Park Avenue, Man.
Upper East Side H.D.

680 Park Avenue Plot Plan & Map



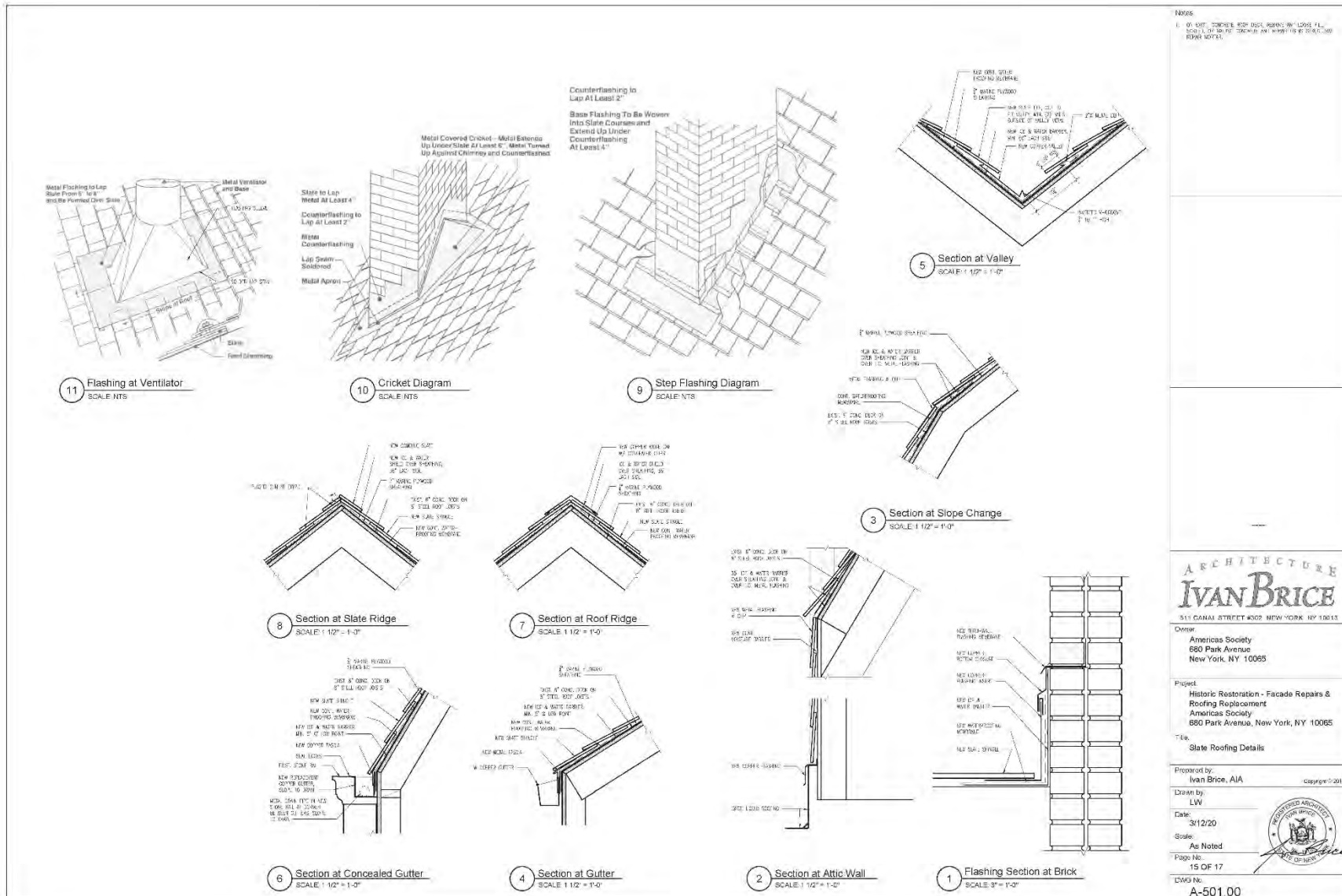
680 Park Avenue – Upper East Side Historic District
Historic Restoration / Façade Repairs & Roofing Replacement

680 Park Avenue Roof Plan

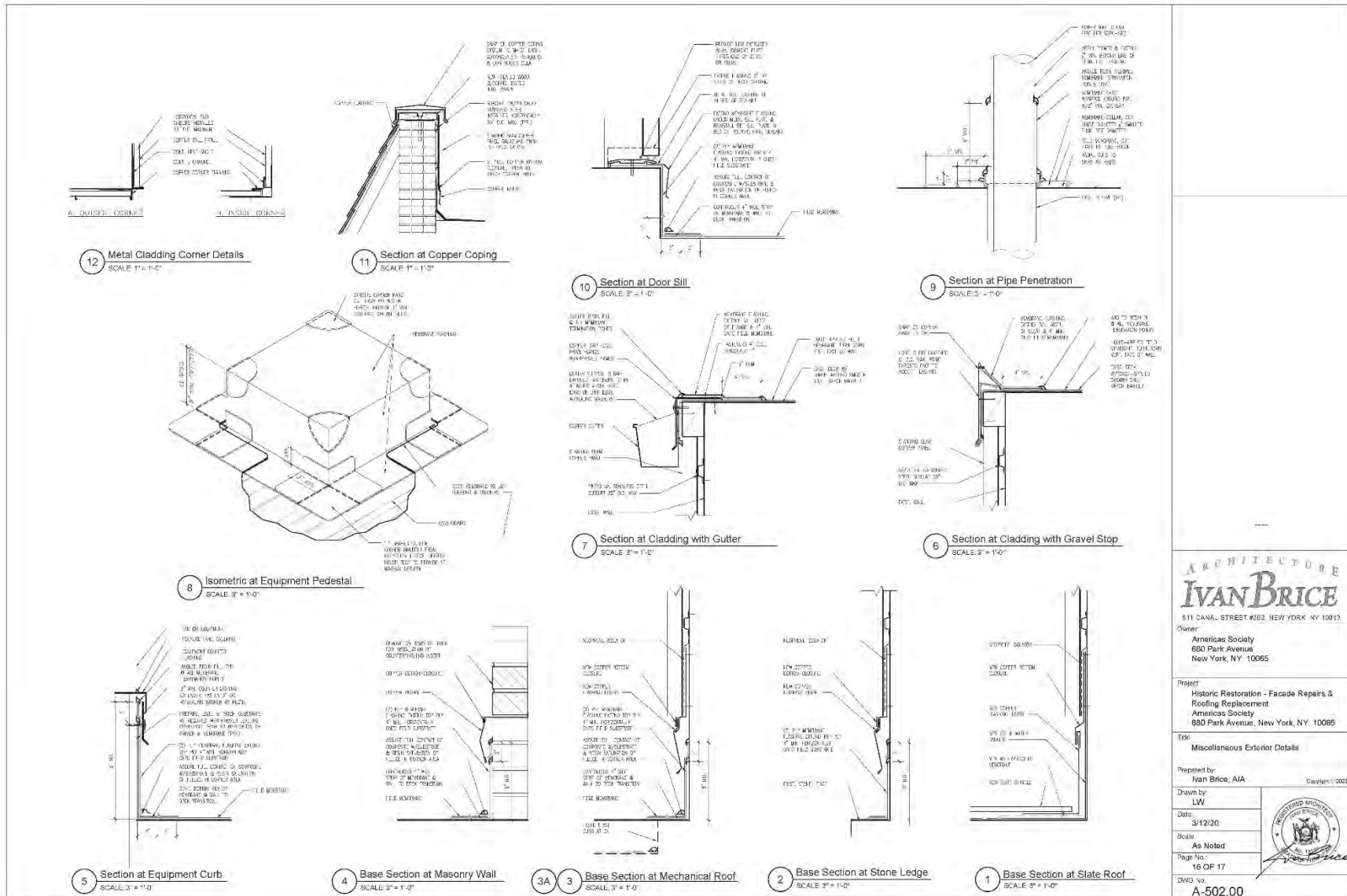


680 Park Avenue – Upper East Side Historic District
Historic Restoration / Façade Repairs & Roofing Replacement

680 Park Avenue Slate Roofing Details



680 Park Avenue Miscellaneous Exterior Details



680 Park Avenue East Façade Roof Conditions



Roof at East Façade



Loose Slate Tiles



Loose Slate Tiles



Slate tile fallen off & resting along stone balustrade

680 Park Avenue East Façade Roof Conditions



Leaking Roof at NE Chimney – Copper Step Flashing covered in Tar



Rusted Damaged Beams at Mechanical Roof



Caulked Cracked Stucco at West & South Walls of Elevator Bulkhead



Conduits Penetrated Mechanical Roof

680 Park Avenue South Elevation



680 Park Avenue West & East Elevations



Stone Replacement and Repairs / Typical Conditions



Cracked right corner at previously repaired window pediment at 68th S façade.



Cracked left side of stone window cornice at 68th Street façade.



Broken right corner of stone window cornice at 68th Street façade.



Eroded stone window scrolls at 68th Street façade.

Stone Replacement and Repairs / Typical Conditions



Overall view of marble portico at Park Ave main entrance.



Severely eroded marble dentils at underside of portico cornice.

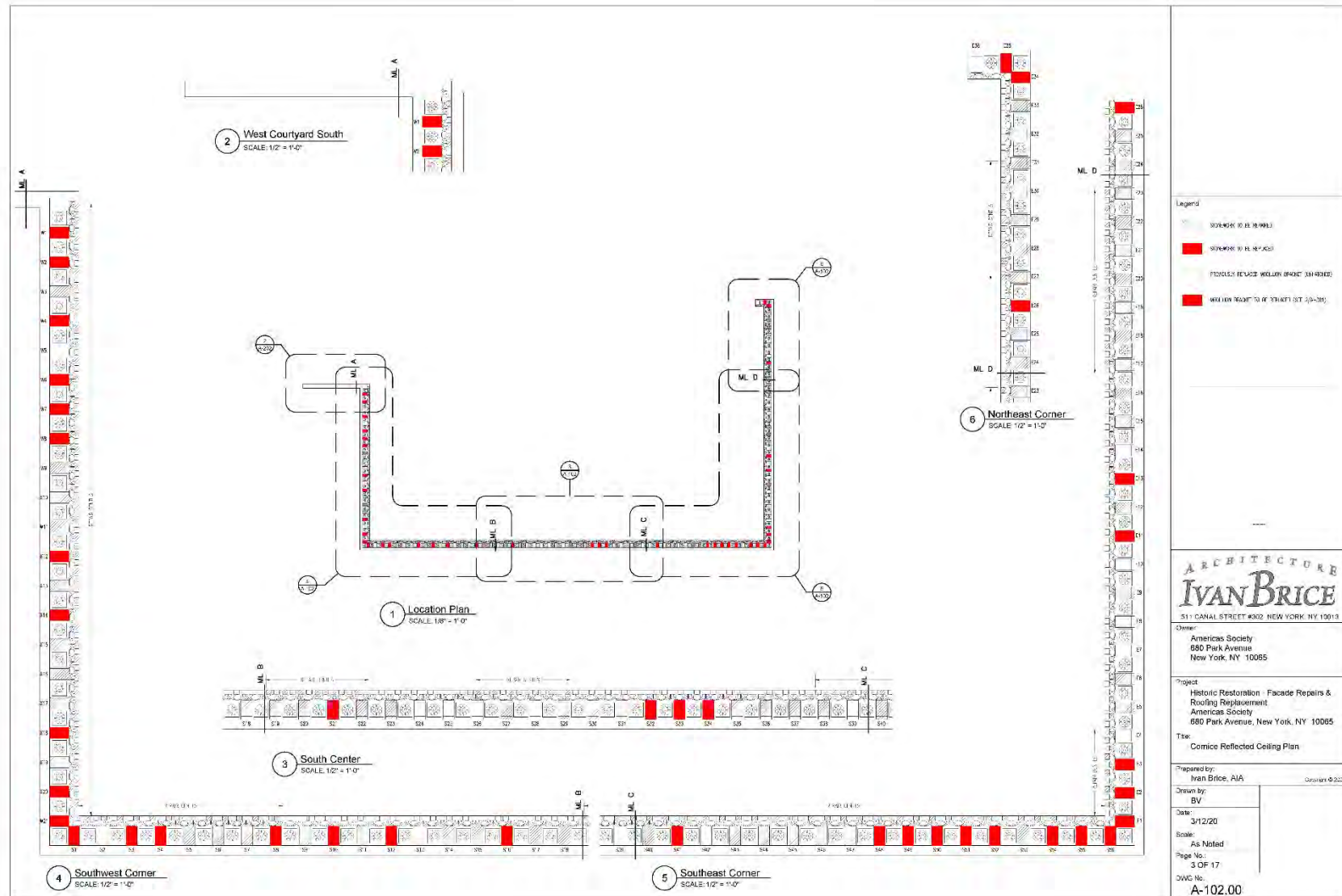


Severely eroded marble capitals at portico's left and right pilasters.



Severely eroded marble capitals at portico's left & right columns.

680 Park Avenue Cornice Reflected Ceiling Plan



Stone Replacement and Repairs / Typical Conditions



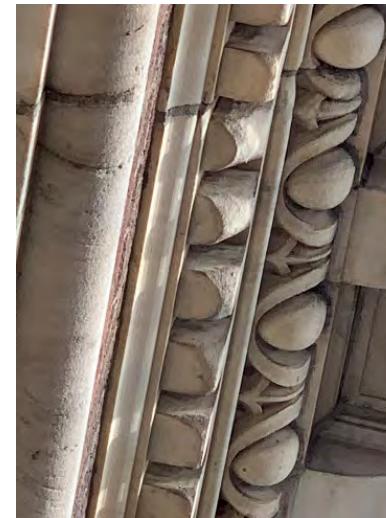
Severely eroded/deteriorated brackets at underside of top cornice.



Severely eroded/deteriorated dentils at underside of top cornice.



Severely eroded/deteriorated brackets at underside of top cornice.



Severely eroded/deteriorated dentils at underside of top cornice.

Stone Replacement and Repairs / Typical Conditions



Badly eroded modillions South side on SE corner of cornice.

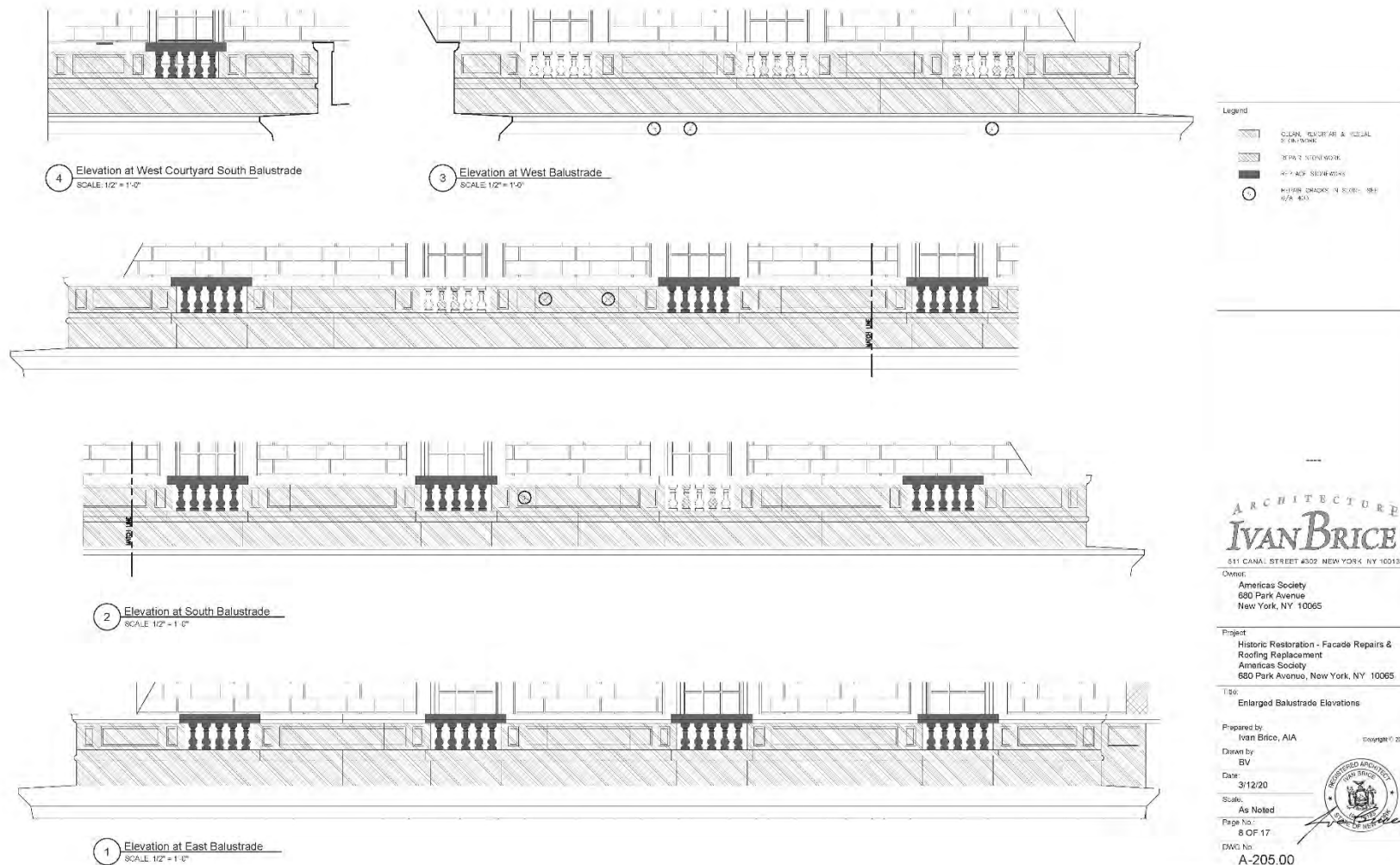


Typical eroded Modillion at cornice



Badly eroded modillions East side on SE corner of cornice.

680 Park Avenue Balustrade Elevations



Stone Replacement and Repairs / Typical Conditions



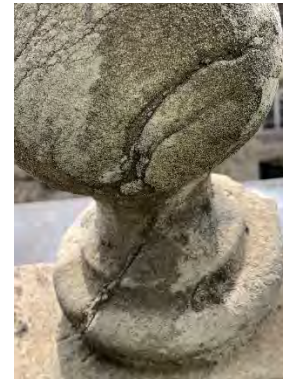
Severely eroded and deteriorated balusters at roof balustrade.



Severely eroded and deteriorated balusters at roof balustrade.

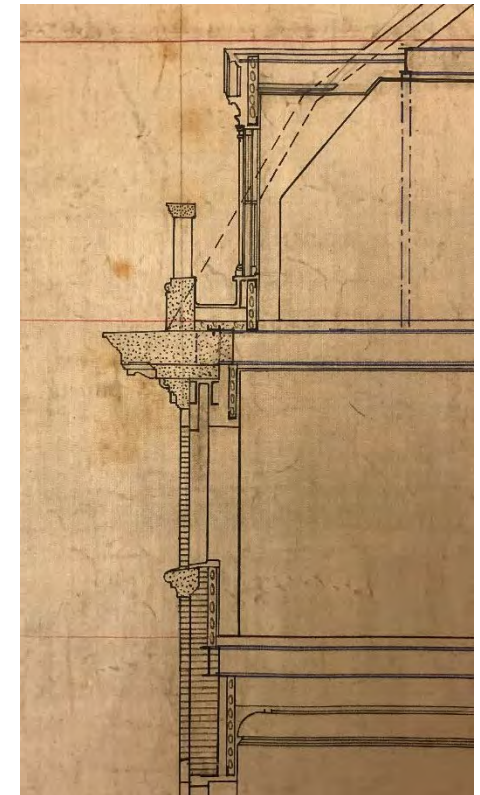


Severely eroded and deteriorated balusters at roof balustrade.

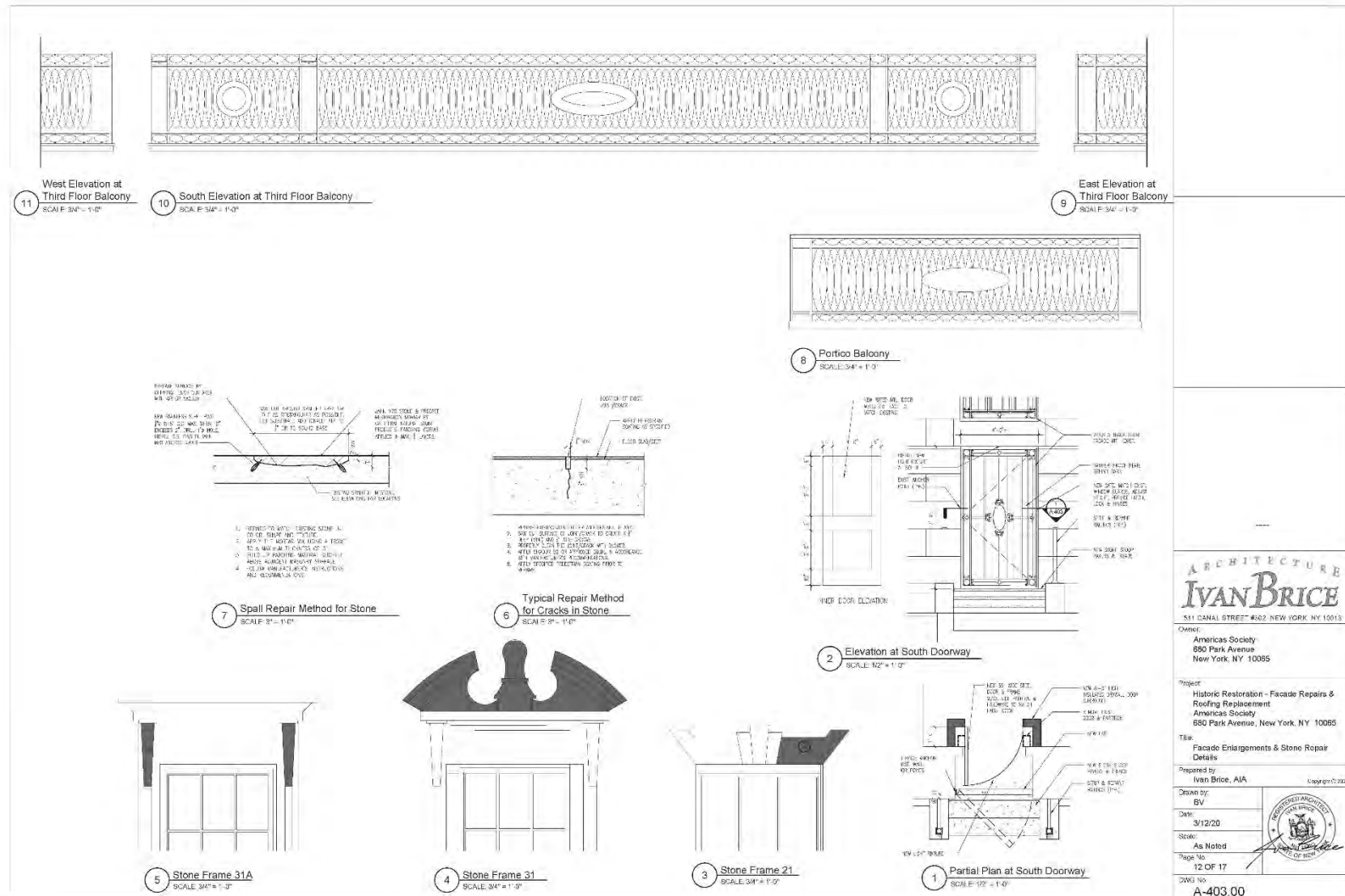


Severely eroded and deteriorated balusters at roof balustrade.

680 Park Avenue Upper Façade Section & Modillion Bracket Detail



680 Park Avenue Façade & Stone Repair Details



680 Park Avenue Second Floor Metal Balcony Repairs



680 Park Avenue Chimney Elevations



Chimney Conditions



Tarred west face of chimney on east side of elevator bulkhead roof



Delaminated brickwork on south face of NE party wall parapet



Eroded brickwork and efflorescence at chimney

Chimney Conditions



Cracked parapet at NE corner of setback roof

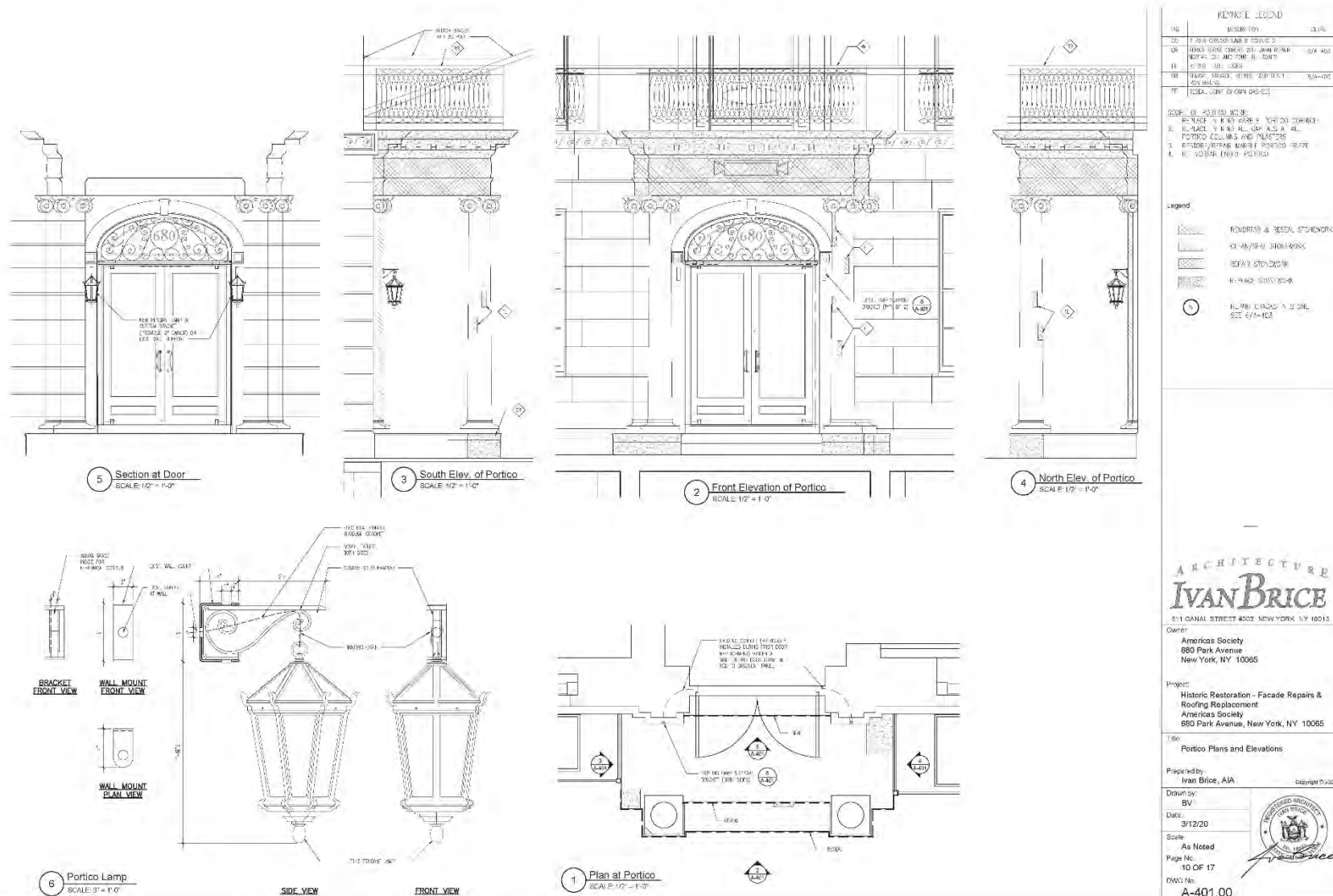


Cracks at chimney

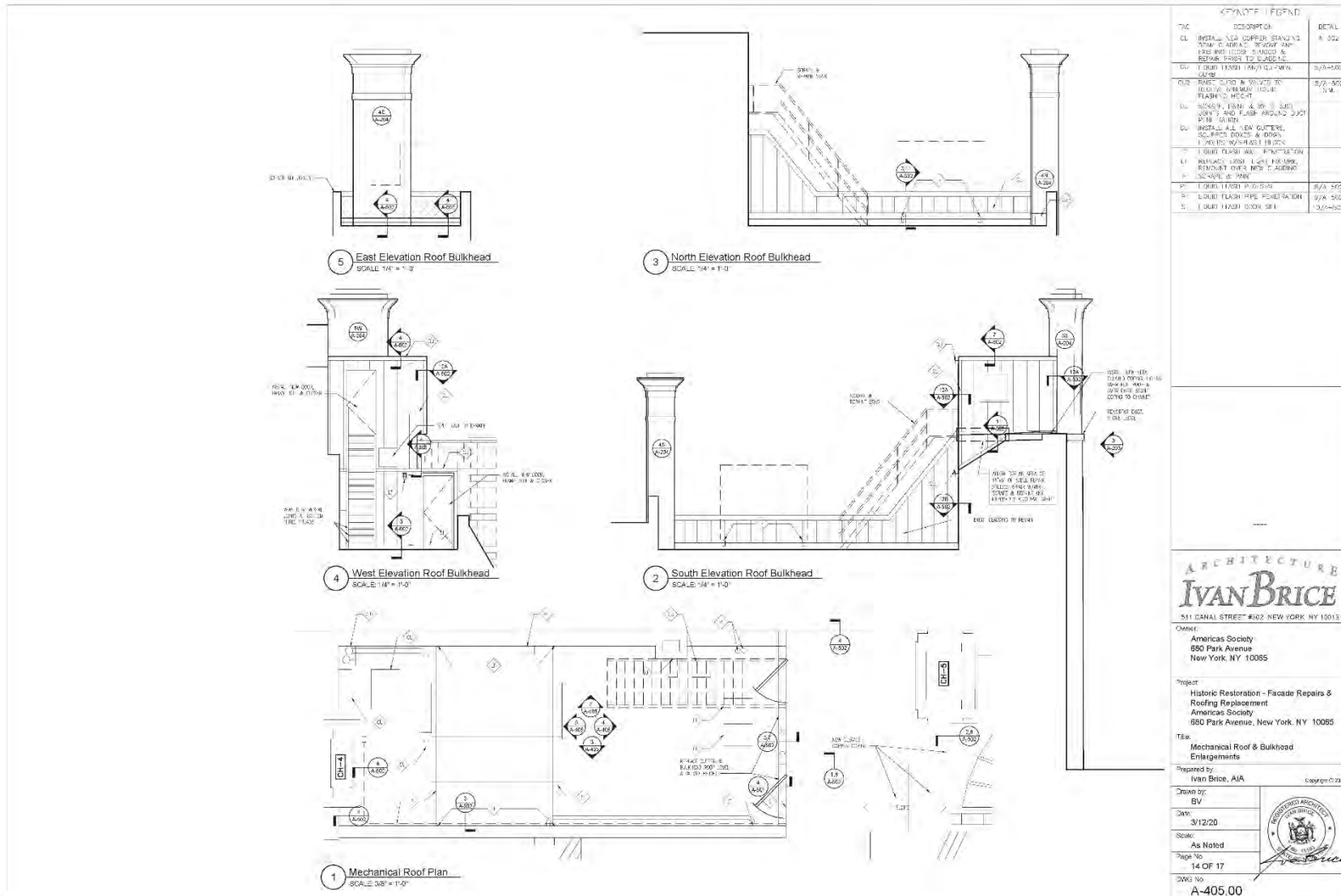


Deteriorated chimney capstone

680 Park Avenue Portico Plans & Elevations



680 Park Avenue Mechanical Roof and Bulkhead



**End
of
Presentation
for
Community Board 8 Manhattan
Landmarks Committee Presentation
HISTORIC RESTORATION including
ROOFING REPLACEMENT & FAÇADE REPAIRS at
Americas Society
680 Park Avenue
New York, NY 10065
6/15/2020**