



1 HISTORIC PHOTOGRAPH - CIRCA 1933
CENTRAL PARK WEST & W 76th STREET FACADE



2 HISTORIC PHOTOGRAPH - CIRCA 1970
NORTH END OF ROOSEVELT ISLAND LOOKING NORTH



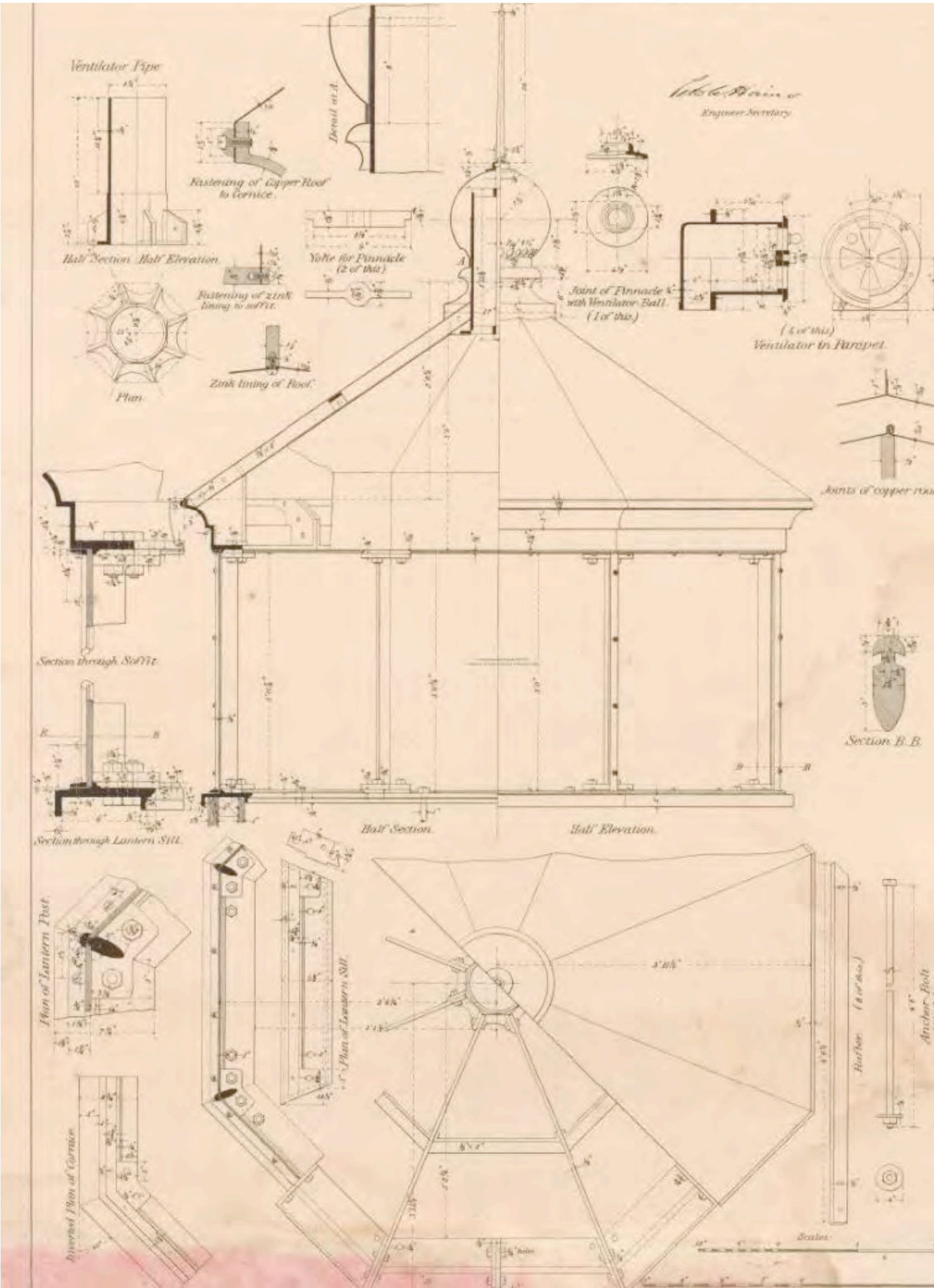
3 HISTORIC PHOTOGRAPH - CIRCA 1970
DETAIL OF NON-ORIGINAL ENTRY DOOR & STONE SURROUND



4 HISTORIC PHOTOGRAPH - CIRCA 1970
DETAIL OF LANTERN & NON-ORIGINAL OBSERVATION DECK



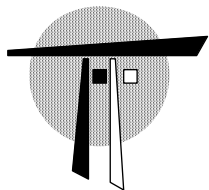
5 HISTORIC PHOTOGRAPH - CIRCA 1975
NORTH END OF ROOSEVELT ISLAND LOOKING EAST



6 DRAWING - CIRCA 1879
STANDARD ISSUE GOVERNMENT CAST IRON LANTERN HOUSE PLAN, ELEVATION, SECTION & DETAILS



7 OVERALL VIEW - PRESENT DAY PHOTO
SOUTH ELEVATION



THOMAS A. FENNIMAN, ARCHITECT
ONE UNION SQUARE WEST
NEW YORK, NY 10003
TEL: 212 414 0250

LIGHTHOUSE

LIGHTHOUSE PARK,
ROOSEVELT ISLAND, NY 10044

TITLE:
HISTORIC PHOTOS,
IMAGES &
ILLUSTRATIONS

PRESENTATION

DATE: 7/13/18
PAGE NUMBER: 1 of 6



1 HISTORIC MAP - CIRCA 1879
ROOSEVELT ISLAND, PREVIOUSLY KNOWN AS BLACKWELL'S ISLAND THEN WELFARE ISLAND



2 HISTORIC PHOTOGRAPH - CIRCA 1895
NORTH END OF ROOSEVELT ISLAND LOOKING SOUTH



4 ILLUSTRATION - CIRCA 1906
POSTCARD SHOWING THE NORTH END OF ROOSEVELT ISLAND LOOKING NORTH



3 HISTORIC PHOTOGRAPH - CIRCA 1910
NORTH END OF ROOSEVELT ISLAND LOOKING EAST



5 ILLUSTRATION - CIRCA 1917
POSTCARD SHOWING THE NORTH END OF ROOSEVELT ISLAND LOOKING EAST



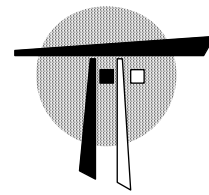
6 HISTORIC PHOTOGRAPH - DATE UNKNOWN
LIGHTHOUSE PARK APPROACH LOOKING NORTH



7 HISTORIC PHOTOGRAPH - DATE UNKNOWN
NORTH END OF ROOSEVELT ISLAND LOOKING NORTH



8 ILLUSTRATION - CIRCA 1911
AMERICAN TOBACCO T77 LIGHTHOUSE SERIES TRADING CARDS



THOMAS A. FENNIMAN, ARCHITECT
ONE UNION SQUARE WEST
NEW YORK, NY 10003 TEL: 212 414 0250

LIGHTHOUSE

LIGHTHOUSE PARK,
ROOSEVELT ISLAND, NY 10044

TITLE:
HISTORIC PHOTOS,
IMAGES &
ILLUSTRATIONS

PRESENTATION

DATE: 7/13/18

PAGE NUMBER: 2 of 6



1 STONE BOLLARDS, DEPRESSED PAVED AREA & ENTRANCE DOOR at BASE
SOUTH ELEVATION



2 ENTRANCE DOOR & STONE GABLE PROFILE
SOUTH ELEVATION



3 STONE CRACKING at MOLDING
BASE at DISPARATE LOCATIONS



4 STONE CRACKING at MOLDING
BASE at DISPARATE LOCATIONS



5 STONE SPALL at MOLDING
BASE at DISPARATE LOCATIONS



6 DETERIORATED, NON-ORIGINAL CONCRETE DECK
ALL ELEVATIONS, TYPICAL CONDITION



7 TEMPORARY PROTECTION AS INSTALLED
OBSERVATION DECK



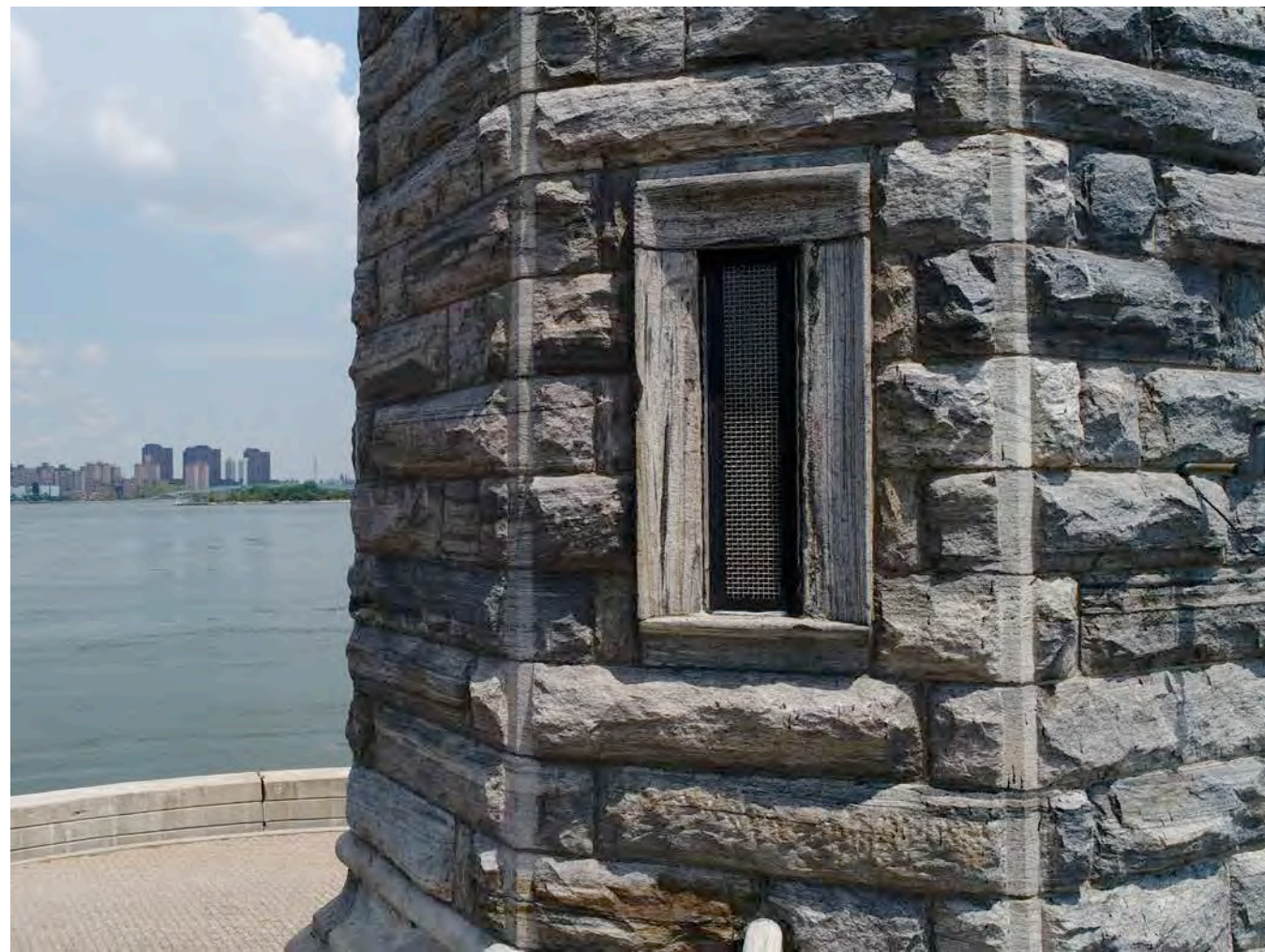
8 REMNANT OF METAL BRACKET ANCHORAGE
STEPPED STONE PROFILE at CAPITAL, EACH OUTSIDE CORNER OF THE OCTAGONAL TOWER



9 DETAIL VIEW OF STONE FOLIATE at TOP of SHAFT
EAST ELEVATION



10 DETAIL VIEW OF WINDOW #2
SOUTH ELEVATION



11 DETAIL VIEW OF WINDOW #1
SOUTH ELEVATION



12 STONE SPALL
WINDOW SURROUND, TYPICAL CONDITION



13 DISPLACED, SKEWED, ERODED & SPALLED FLAGSTONES / INCOMPATIBLE PATCHING MATERIAL
DEPRESSED PAVED AREA



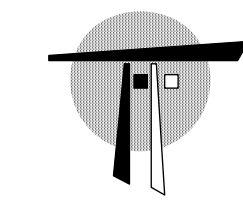
14 DISPLACED, SKEWED, ERODED & SPALLED FLAGSTONES / INCOMPATIBLE PATCHING MATERIAL
DEPRESSED PAVED AREA



15 CRACK at STONE CURB
DEPRESSED PAVED AREA



16 DETAIL VIEW OF STONE CURB END UNIT w/ NON-ORIGINAL STONE STEP at RIGHT
DEPRESSED PAVED AREA



THOMAS A. FENNIMAN, ARCHITECT
ONE UNION SQUARE WEST
NEW YORK, NY 10003 TEL: 212 414 0250

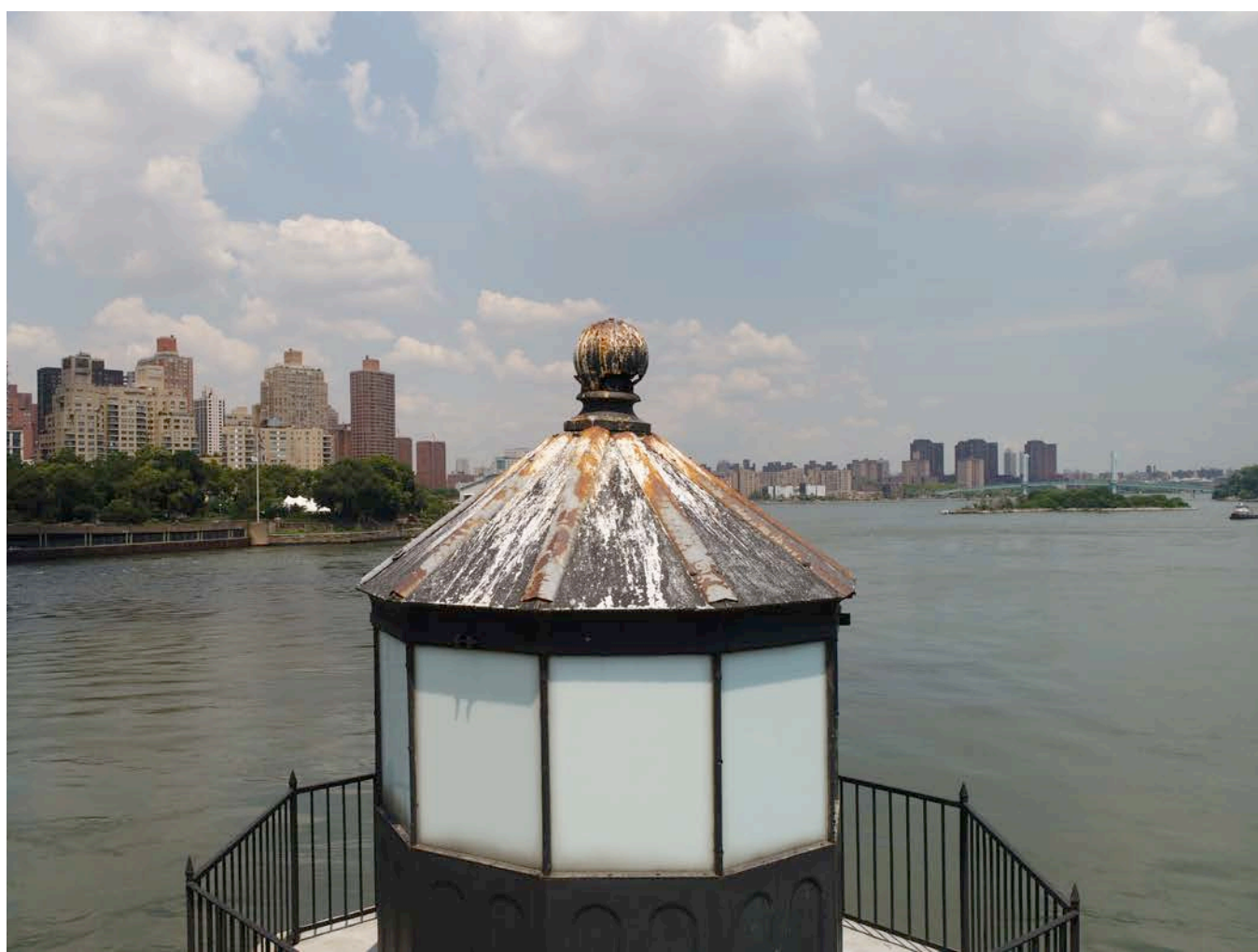
LIGHTHOUSE

LIGHTHOUSE PARK,
ROOSEVELT ISLAND, NY 10044

TITLE:
PHOTO SURVEY -
MASONRY & SITE
CONDITIONS

PRESENTATION

DATE: 7/13/18 PAGE NUMBER: 3 of 6



1 PAINT FAILURE, CORROSION OF METAL JOINT COVER & DISPLACED SECTIONS OF CAST IRON LANTERN ROOF



2 FRACTURED CAST IRON VENTILATOR ORB LANTERN ROOF



3 PAINT FAILURE, CORROSION OF UNDERLYING METAL & LOOSE FASTENERS LANTERN PARAPET WALL TOP



4 ORIGINAL HISTORIC METAL STANCHION LANTERN HOUSE



5 CAST IRON PANEL SEPARATION, PAINT FAILURE & GALVANIC CORROSION LANTERN ROOF



6 CAST IRON PANEL SEPARATION, PAINT FAILURE & GALVANIC CORROSION LANTERN ROOF



7 CRACKED CAST IRON PANEL, PAINT FAILURE & GALVANIC CORROSION LANTERN ROOF



8 CRACKED CAST IRON PANEL, PAINT FAILURE & GALVANIC CORROSION LANTERN ROOF



9 CAST IRON PANEL SEPARATION & DEFORMATION LANTERN ROOF



10 PAINT FAILURE & GALVANIC CORROSION LANTERN PARAPET WALL



11 PAINT FAILURE, CORROSION OF UNDERLYING METAL & SEPARATION B/N LANTERN & DECK LANTERN PARAPET WALL & OBSERVATION DECK HATCH



12 SEVERELY CRACKED, SPALLED CONCRETE & DELAMINATED TRAFFIC SURFACE OBSERVATION DECK



13 SEVERELY CRACKED, SPALLED CONCRETE & DELAMINATED TRAFFIC SURFACE OBSERVATION DECK



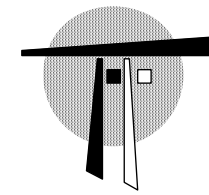
14 SEVERELY CRACKED, SPALLED CONCRETE & DELAMINATED TRAFFIC SURFACE OBSERVATION DECK



15 DETERIORATED MASONRY MORTAR JOINTS OBSERVATION DECK



16 PAINT FAILURE, CORROSION OF UNDERLYING METAL & CONNECTION FAILURE METAL RAILING



THOMAS A. FENNIMAN, ARCHITECT
ONE UNION SQUARE WEST
NEW YORK, NY 10003 TEL: 212 414 0250

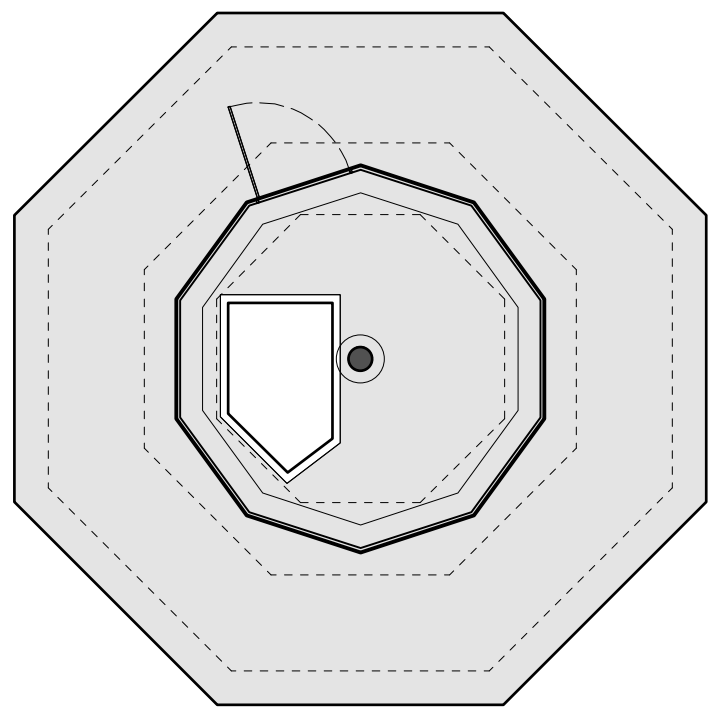
LIGHTHOUSE

LIGHTHOUSE PARK,
ROOSEVELT ISLAND, NY 10044

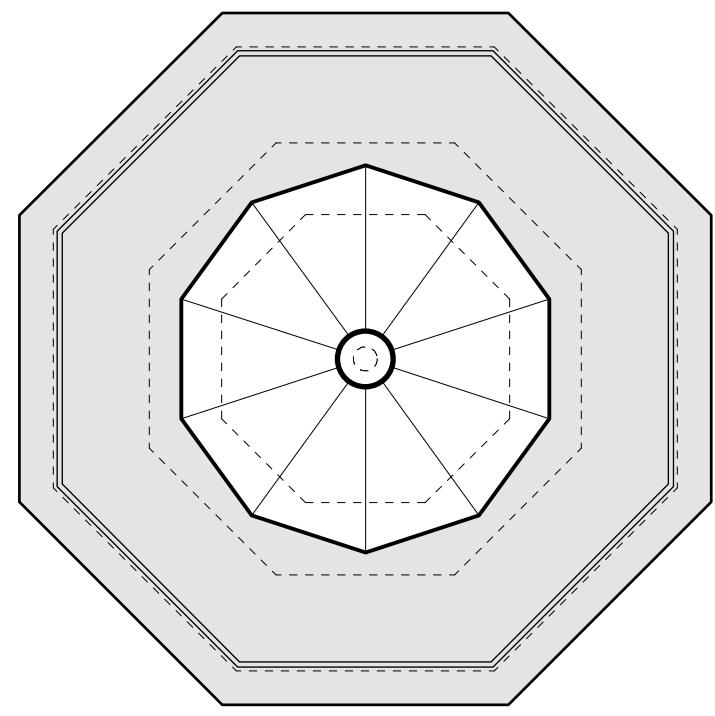
TITLE:
PHOTO SURVEY -
LANTERN& OBSERVATION
DECK CONDITIONS

PRESENTATION

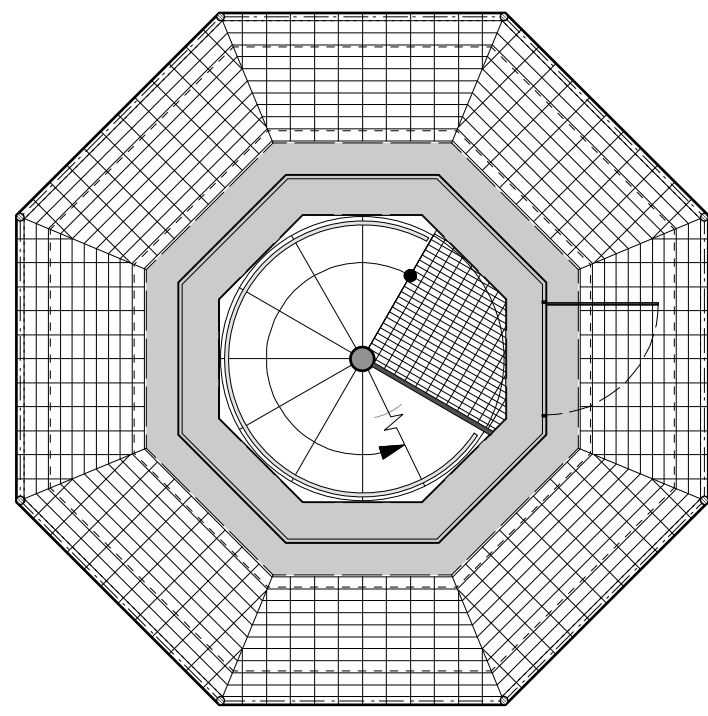
DATE: 7/13/18 PAGE NUMBER: 4 of 6



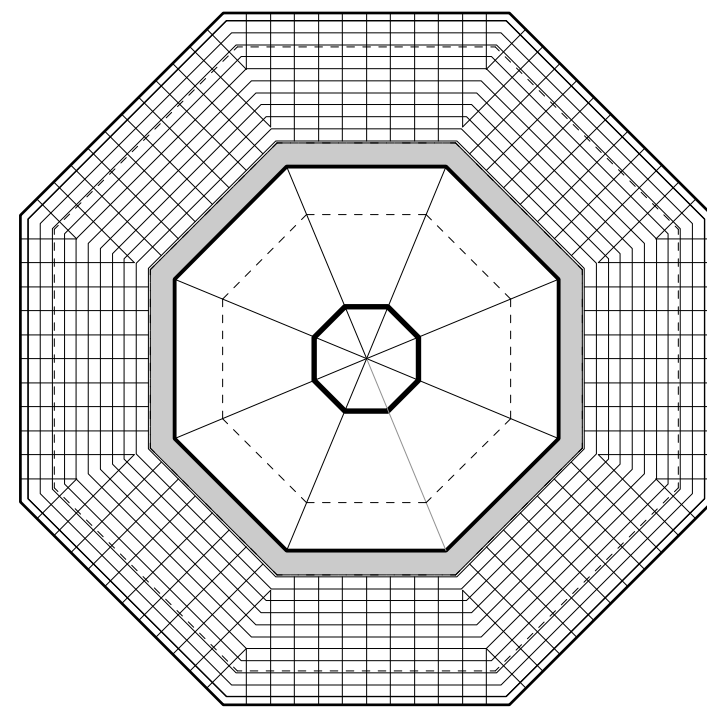
1A' EXISTING LANTERN/OBSERVATION DECK PLAN
Lantern = 50 sf / Gallery = 105 sf



1B' EXISTING ROOF PLAN



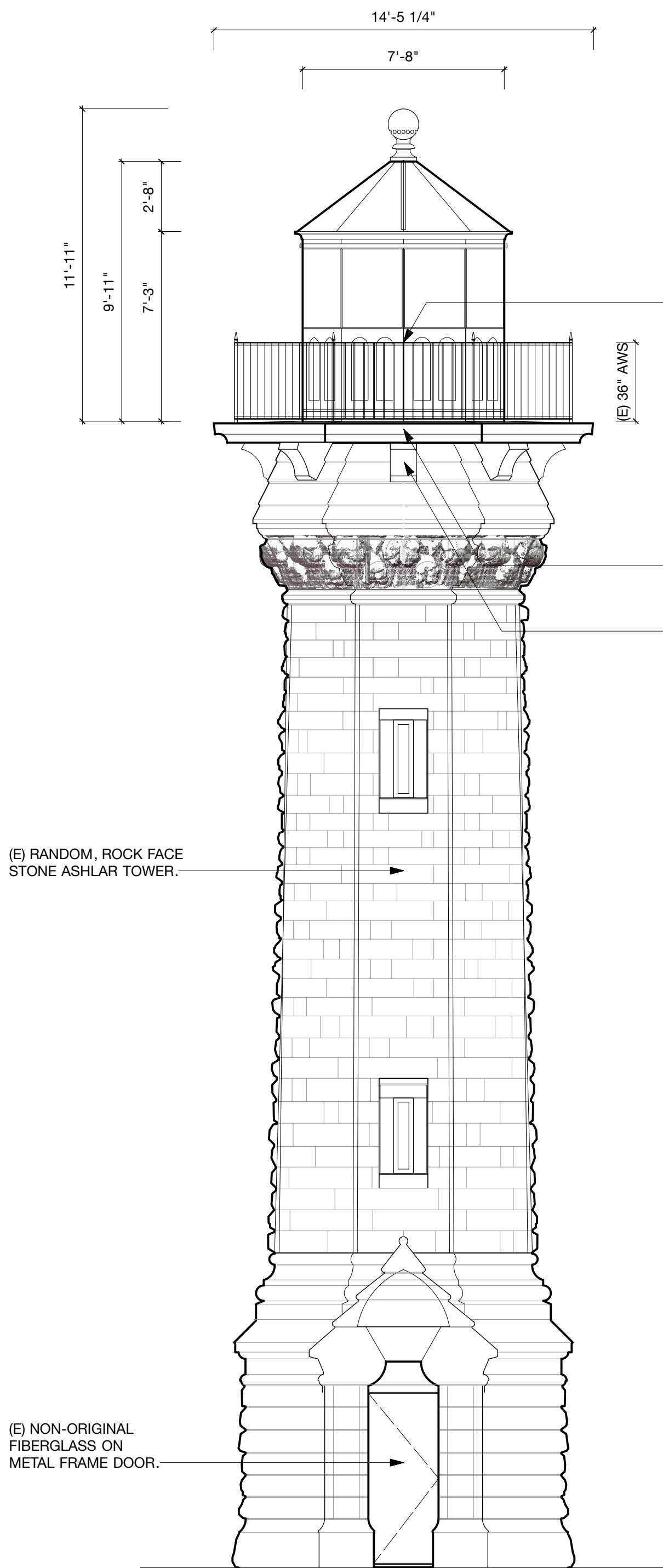
1C' PROPOSED LANTERN/OBSERVATION DECK PLAN
Lantern = NO CHANGE / Gallery = NO CHANGE



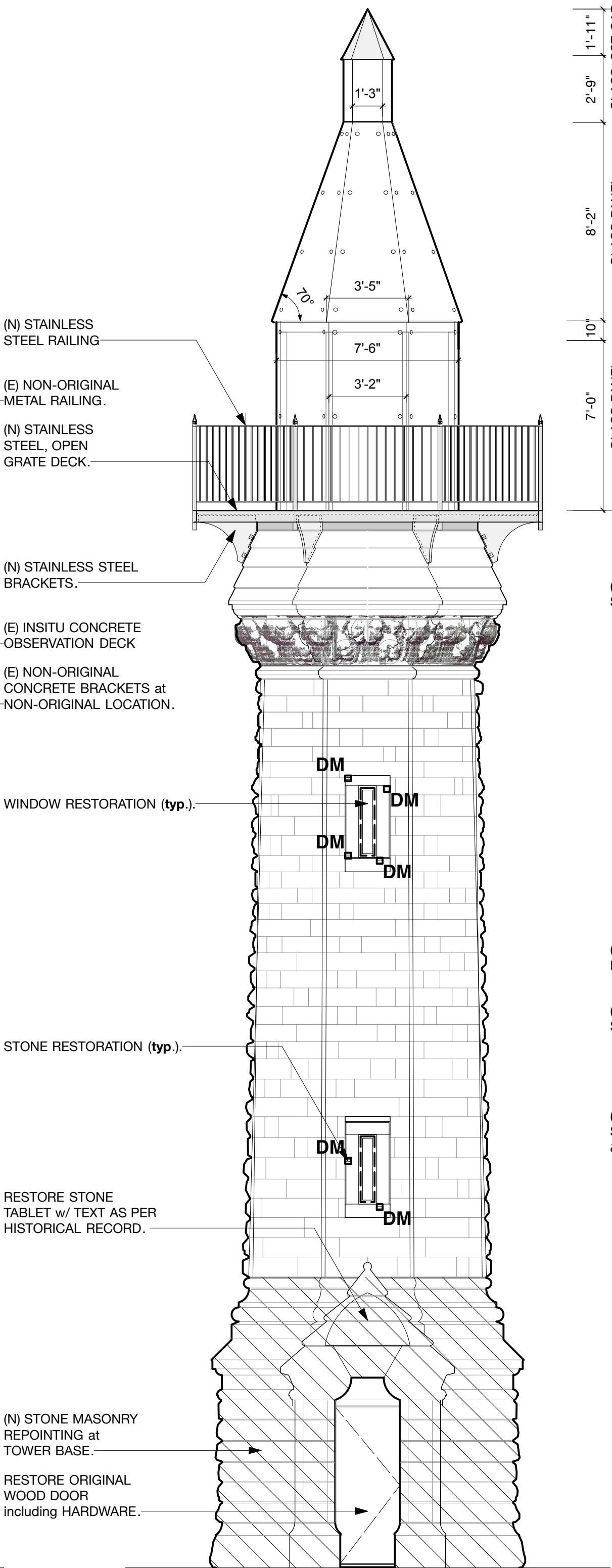
1D' PROPOSED ROOF PLAN



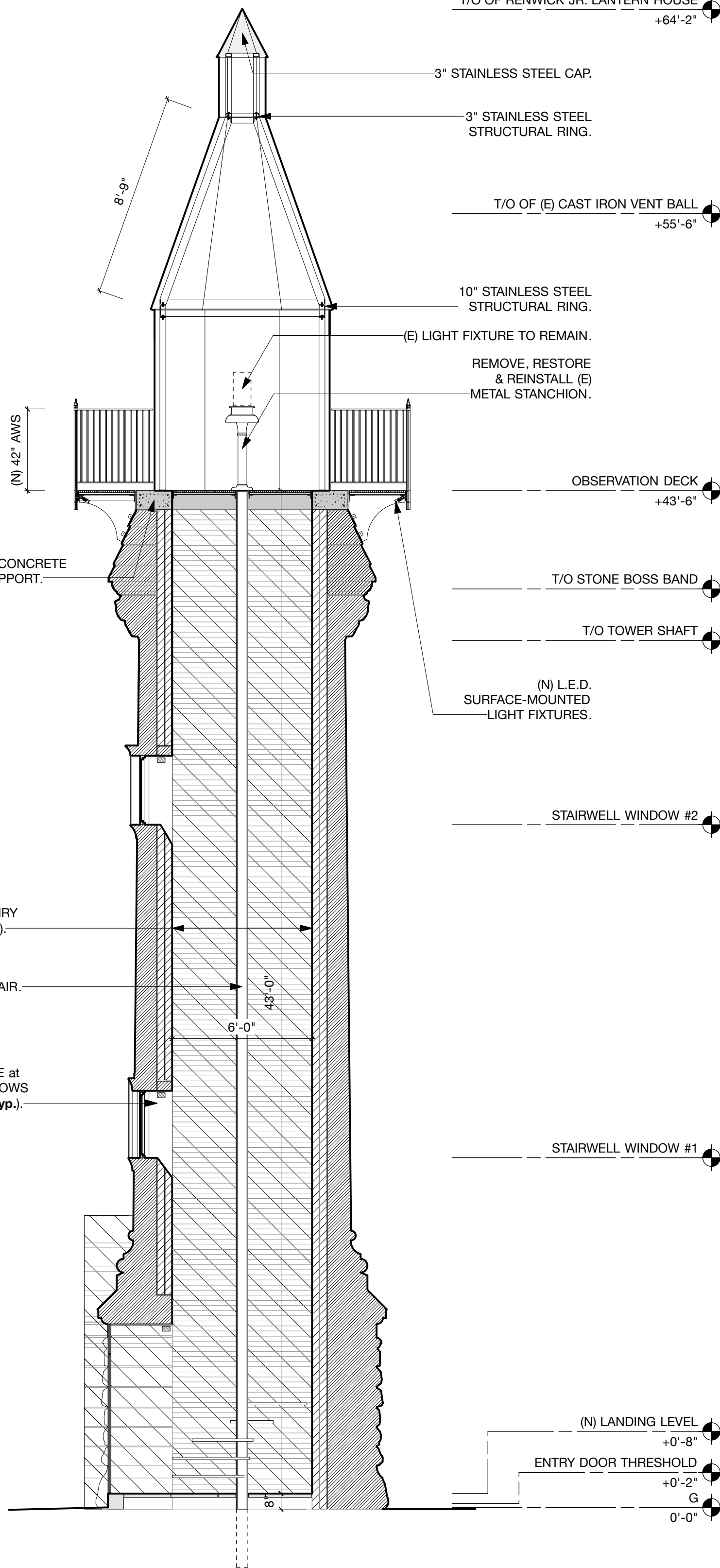
1A EXISTING - ORTHOSCAN



1B EXISTING - LINE DRAWING



1C PROPOSED - WITH NEW GLASS LANTERN



1D PROPOSED - SECTION

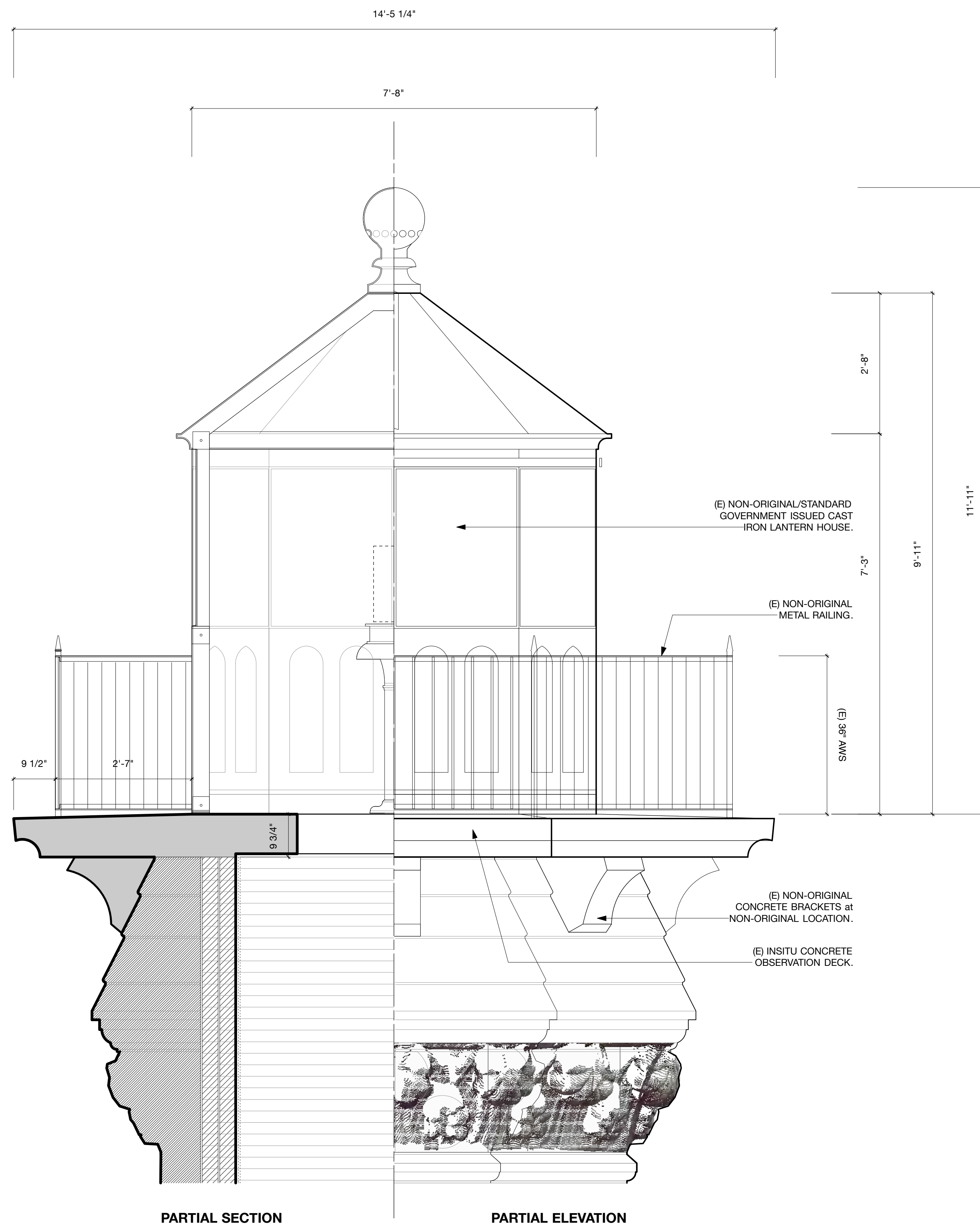


1E HISTORIC IMAGE - Circa 1890
Credit: image by E.B. Sherman

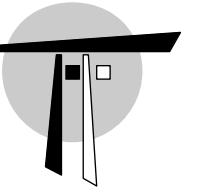
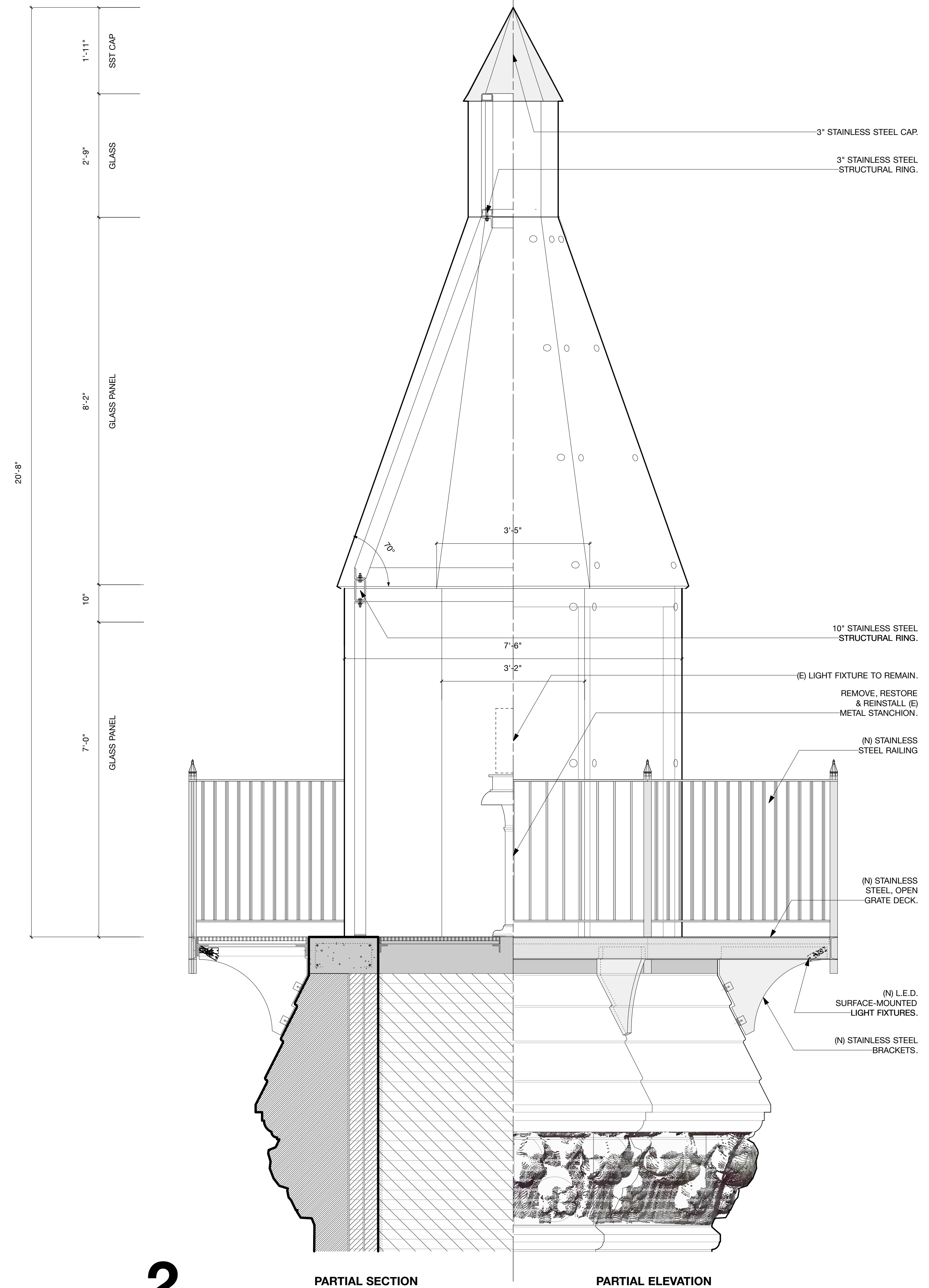
LIGHTHOUSE

LIGHTHOUSE PARK,
ROOSEVELT ISLAND, NY 10044

1



2



THOMAS A. FENNIMAN, ARCHITECT
ONE UNION SQUARE WEST
NEW YORK, NY 10003 **TEL: 212 414 0250**

LIGHTHOUSE

LIGHTHOUSE PARK,
ROOSEVELT ISLAND, NY 10044

TITLE:
LANTERN HOUSE STUDY

PRESENTATION

DATE: 7/13/18

PAGE NUMBER: 6 of 6