

Alida Camp  
Chair

Will Brightbill  
District Manager



505 Park Avenue, Suite 620  
New York, N.Y. 10022-1106  
(212) 758-4340  
(212) 758-4616 (Fax)  
www.cb8m.com - Website  
info@cb8m.com - E-Mail

**The City of New York  
Community Board 8 Manhattan  
Parks and Waterfront Committee  
Thursday, November 7, 2019 - 6:30PM  
Marymount Manhattan College  
221 East 71<sup>th</sup> Street**

*Please note: The resolutions contained in the committee minutes are recommendations submitted by the committee chair to the Community Board. At the monthly full board meeting, the resolutions are discussed and voted upon by all members of Community Board 8 Manhattan.*

**Resolutions for approval:**

**Item 1 – Unanimous Approval**

**Item 2 – Unanimous Approval**

**Minutes:**

**Community Board Members (Present):** Lowell Barton, Alida Camp, Billy Freeland, Greg Kirschenbaum, Craig Lader, Rita Popper, Tricia Shimamura, Barry Schneider

**Community Board Public Members (Present):** Judy Schneider, Irma Torres

**Community Board Members (Excused):** Barbara Rudder

**1. Presentation by the NYC Parks Dept. of a Security Infrastructure Project for Carl Schurz Park by B. Chatfield and Lindsay Quartini.**

**Goals**

- Install security measures at all entrances to Carl Schurz Park to prevent unauthorized vehicular access and prevent terrorism.
- Maintain existing access to the park for all visitors and maintenance vehicles
- Incorporate existing materials of the park into material palette for security Measures.
- The Parks Department is working with the New York Police Department of Counter Terrorism.
- This measure is particularly needed as Gracie Mansion is located in the park.
- Keys to activate the gates will be given to a specific list, such as parks maintenance and operations workers and EMS etc.
- Design will be complete in 2020 and plan to start construction in 2021 and it will take about a year.

**Total Budget**

- \$1,153,518, Mayoral Funded Project FY201

## Map of Carl Schurz Park



## Gate & Bollards



## Vehicle Access Direction

Typically, swing gate opens inward (toward protected area), but it is possible for gate to move in either direction.



View of Entrance 1 from East End Ave at E 89th St.



View of Entrance 4 from East End Ave at E 86th St.

View of Entrance 5 from East End Ave at E 84th St.





View of Entrance 6 from Gracie Square



View of Entrance 7 from John Finley Walk, looking towards E. 83rd St.

**RESOLUTION:**

**WHEREAS** Carl Schurz Park is home to Gracie Mansion, the home of the mayor of the city of New York, and

**WHEREAS** Carl Schurz Park is very heavily used by all members of the community– from toddlers to seniors – and,

**WHEREAS** there have recent incidents of motor vehicles of all sizes illegally entering parks and other pedestrian walkways and thereby endangering the unwary park-goers,

**THEREFORE, BE IT RESOLVED** Community Board 8 Parks & Waterfront Committee recommends approval of the security infrastructure project for Carl Schurz Park.

**Approved Board Members:** 8-0-0 (Yes: Barton, Camp, Freeland, Kirschenbaum, Lader, Popper, Shimamura, Barry Schneider)

**Approved Public Member:** 2-0-0 (Yes: Judy Schneider, Torres)

**2. Presentation by the Central Park Conservancy on the Re-envisioning the Pool and Rink on the Harlem Meer and Completing the Restoration of the North End of Central Park** by Lane Addonizio, John Doherty of Mitchell Giurola Architects, and John Redick of Community Outreach.

The following is the Parks Department presentation:

Re-envisioning the Pool and Rink on the Harlem Meer and Completing the Restoration of the North End of Central Park



In July 2018, the Central Park Conservancy announced plans to partner with the City of New York on a transformational project to re-envision the Pool and Rink on the Harlem Meer. The project represents the capstone effort of the Conservancy's decades-long commitment to restore the Harlem Meer and the northern end of the Park as a vital resource for the surrounding community.

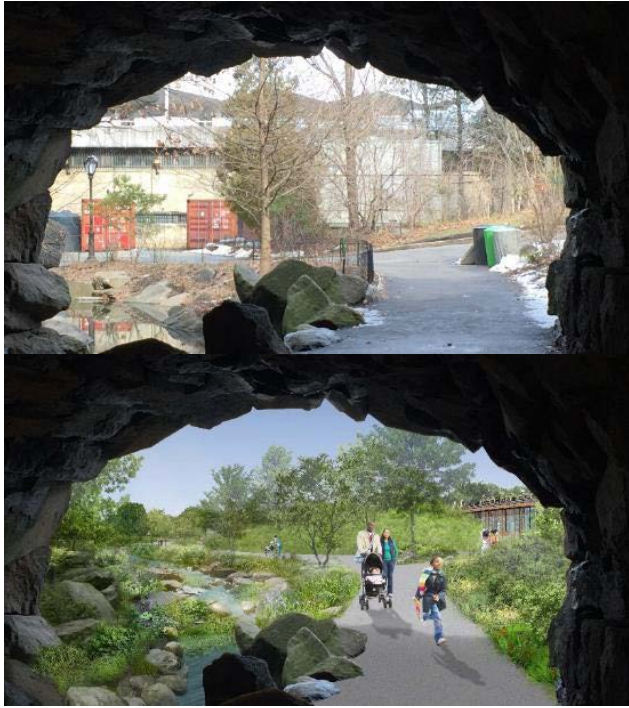
While it has provided an important recreational resource for the community, the aging facility has been plagued by systemic problems since it opened in 1966. The massive scale of the structure overwhelmed the site and had a disastrous impact on the landscape, disrupting hydrology and severing pedestrian connections through the Park. With the demolition and replacement of the existing facility, the project will remove an imposing and incongruous structure that acts as a physical and visual barrier between the north end and the rest of the Park. In so doing, it will spatially reconnect the Harlem community to the larger Park experience, relinking the network of paths and opening up views and access to the woodland landscape of the Ravine that has been blocked for decades. A critical aspect of renewing this connection will include restoring the historic watercourse and extending the pedestrian path to create uninterrupted access from the Meer, through the North Woods, to the idyllic 100th Street Pool on the west side of the Park.

Located within the curvilinear frame of Olmsted and Vaux's original design of the Park Drive at the northern end of Central Park, the project proposes to replace the aging and flood-prone structure with a new swimming and skating experience enveloped by a landscape that is seamlessly integrated into the Park's historic landscape. The design of the new facility, inspired by a tradition of building in Central Park that fuses architecture and landscape, will be built into the topography of the site along the western slope.



From above, the building will be concealed from view with a green roof created by extending the existing landscape and paths over the top. Green space will effectively cover the entire facility, including public space for gathering, locker rooms, rentals and concessions, as well as staff and mechanical spaces to support the operations of the pool and rink. This green roof will form an exterior overlook with views of the park and the pool and rink below. A light-filled gathering space below with expansive views to the pool and rink and the surrounding landscape will be open to the public throughout the year. Large floor to ceiling glass doors along the entire length of the space will open up to the pool deck creating a shaded area during the summer season.

The Pool will be framed by the new building to the east and the watercourse to the west. The shape of the pool, an elongated oval, maximizes its size and compatibility with the organic geometry of the park setting. Echoing the shape of the pool is a deck that includes a splash pad at its southern end. A landscape berm envelopes it all to create an outdoor room set within the Park's landscape. The pool will be transformed seasonally into an ice rink.



Existing and proposed view through Huddleston Arch, the historic threshold between the Ravine and the Harlem Meer before it was blocked by construction of the existing facility.

Besides the above description of the project, the following is some additional information:

- Pool bottom is cracked and it can leak up to 50,000 gallons of water an hour. (Parks Dept. pays the water bill.)
- As of 2020 the refrigerant use for the ice rink will no longer be allowed. Also, it is not currently ADA accessible.
- The pool was not original to the park, but the new pool and ring will blend in with the park. This will repair the damaged landscape and improve the hydrology of the park with a more “Omstedian” feel.
- In making the change most all the accessory infrastructure will be built into the berm on the side of the drive and make it subservient to the landscape.
- Currently the pool/rink is only used about ½ the year. Hope for new facility to be used year-round.
- The new pool/rink will be oval and 75% of the size of the existing. Pool/rink usage showed that the facility was only at capacity once or twice a year...most of the time very underutilized.
- Rink is located in the bottom of the pool.
- Coming from the south the steep stairs will be eliminated, as will the wading pool which is being replaced with a splash pad that does not need a lifeguard and will be in use for a longer period of time.
- This will provide Park users with year-round access to restrooms and amenities
- There will be a boardwalk and pergola that travels through a series of small islands and a freshwater marsh

- Unhindered access across the north end of the Park — both by reconnecting the watercourse that runs through the Ravine, so it flows freely into the Harlem Meer, and re-establishing the pedestrian path that once ran alongside it
- Cost of the project is \$110 million. Plan to start construction in 2021 and it will take 3 years, as the entire existing facility will be removed and replaced.
- The other Community Boards around the park have all approved this project and asked for the Conservancy to keep them updated as the project progresses.

The questions centered on:

- Why there was not a more irregular shape to the pool, why the pool was not bigger, why isn't it covered when it rains?
- Keeping the wading pool versus the splash pad.
- Comments about current size of the rink for hockey, whereas the new rink will be better configured.
- Whether the roads will be closed during construction, which they will not.

These questions were handled in great detail.

#### **RESOLUTION:**

**WHEREAS** the Central Park Conservancy plan to restore the Harlem Meer and the northern end of the Park as a vital resource for the surrounding community, and  
**WHEREAS** this aging facility has been beset by systemic problems since it opened in 1966, and

**WHEREAS** the proposal will reconnect the Harlem community to the larger park experience, and

**WHEREAS** the project proposes to replace the aging and flood-prone structure with a new swimming and skating experience enveloped by a landscape that is seamlessly integrated into the Park's landscape,

**THEREFORE, BE IT RESOLVED** Community Board 8 Parks & Waterfront Committee recommends approval of the Central Park Conservancy's presentation as shown and asked that the Conservancy keep the Community Board up to date on the project.

**Approved Board Members:** 8-0-0 (Yes: Barton, Camp, Freeland, Kirschenbaum, Lader, Popper, Shimamura, Barry Schneider)

**Approved Public Member:** 1-0-0 (Yes: Judy Schneider)

### **3. Update on Tramway Plaza Elevator Project**

- Written report by Prince Shah of RIOC stated that they have received all DOB, DEP and MTA approvals and the contractor will remobilize on site next week. The current project completion schedule is Fall 2020. As a reminder, there are no changes to the previously approved design and its aesthetics above ground.
- The project has gone on too long with nothing happening. It was suggested we write a letter to our State Senator. Barry said he would do a draft.

### **4. Update on 72<sup>nd</sup> Street Overlook**

- Missing planks in the benches and projected cobblestones are the two main dangerous problems. We are getting into the cold weather and nothing will get done.
- Tricia will draft up a letter from CB 8 to Commissioners Pincar and Castro requesting a meeting to discuss the area and obtaining a MOU. We will ask the electeds to sign on and the time frame for sending the letter would be by Thanksgiving.

**5. Parks Department update by Wesley Hamilton, District Manager.**

- We have a new supervisor for the district Luis Agiudelo, Dorothy Rowen was transferred to a different district.
- Parks Crews did a dry run and they are ready for the winter weather.
- All the volunteer events in the various parks in the district during the last month went very well—Ruppert Park, Stanley Isaacs, John Jay and St. Catherine's.
- 24 Sycamores Park is waiting the results of the last test for asbestos test on the roof's membrane liner. It is expected for the construction in the upper portion of the park to start by the end of the month. The lower portion will be open during construction.
- Honey Locust Park is waiting to go before the Design Commission.
- Parks is in the process of opening and reviewing bids for John Jay Park
- East River Crew. First Engineers are surveying the area and the pilings to see if this location is suitable and if any work needs to be done. Then the Shops Crew is looking into the relocation of the gate and davit and is this something they can do, if so, it will have to be put into Capital Budget.
- We had the ground-breaking at Carl Schurz Playground.

**6. New Business**

- A Community Garden was suggested for the SW Corner of 78<sup>th</sup> Street and First Avenue (1489 First Ave.). There are large trees and the lot does not seem to be used for the last 5 years or so.  
Following the meeting it was found out the property is privately owned there are no tax liens against the property.
- Assemblyman Dan Quart was present at the Muslim Women's Volunteer day at Ruppert Park and he told Barry that there could be some serious money from State to help redo the park. He would be happy to talk to the other state electeds about this issue. Barry said he will follow up with Commissioner Castro if he has spoken with the Assemblyman.

Tricia Shimamura and Barry Schneider  
Co-Chairs, Parks and Waterfront Committee