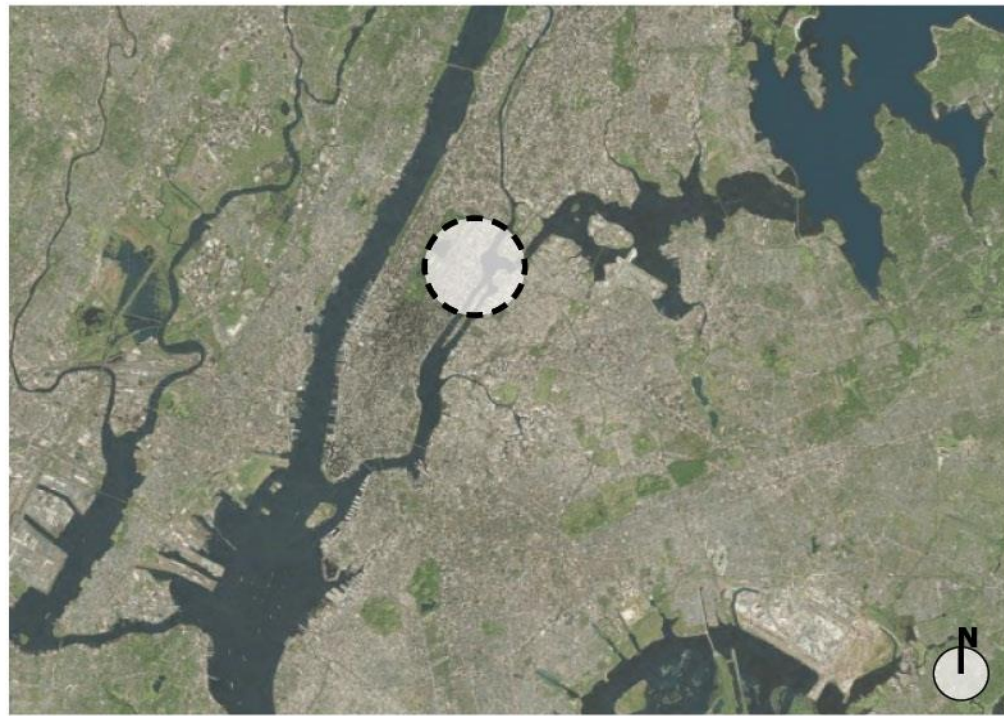




**Construction of the E. 92nd Street MTS Ramp Over
FDR Drive / Relocation of E. 92nd Street Entrance
Ramp to South Bound FDR Drive**



**Community Board 8M
Preliminary Design
July 10, 2019**



Project Location

**Construction of the New E. 92nd Street MTS Ramp
Over FDR Drive / Relocation of E. 92nd Street
Entrance Ramp to S/B FDR Drive**



**Community Board 8M
July 10, 2019**



FDR Drive and Asphalt Green Building - Facing South



Asphalt Green - Facing North on FDR Drive N/B



DeKovats Triangle & FDR Drive S/B Ramp Viewed from East 92nd Street - Facing East



East 92nd St. - Facing West from York Avenue



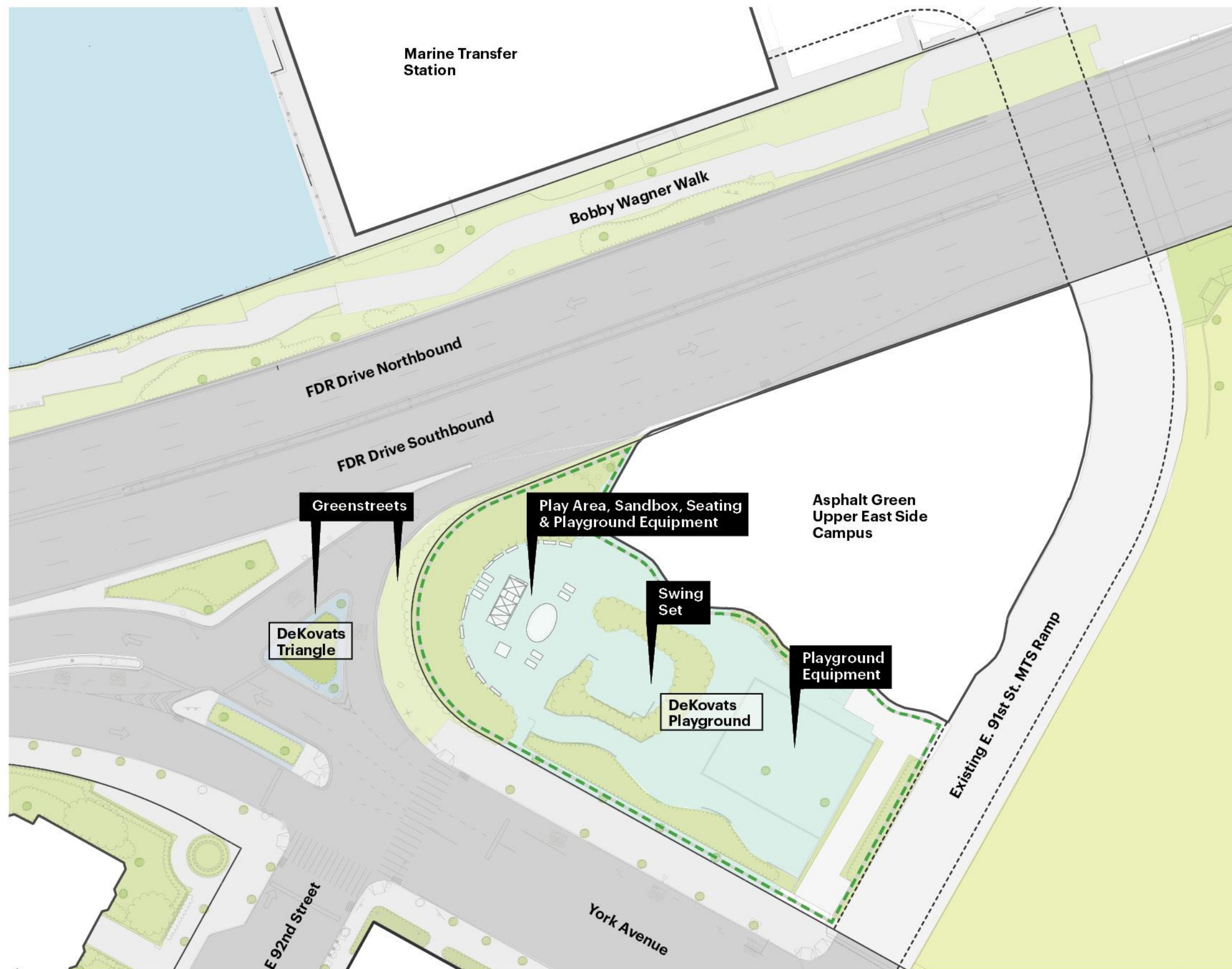
Asphalt Green Campus & Existing E. 91st St. MTS Ramp - Facing East on York Avenue



DeKovats Playground - Facing North from Asphalt Green Entry

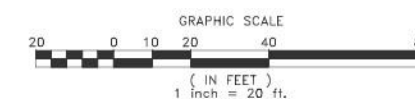


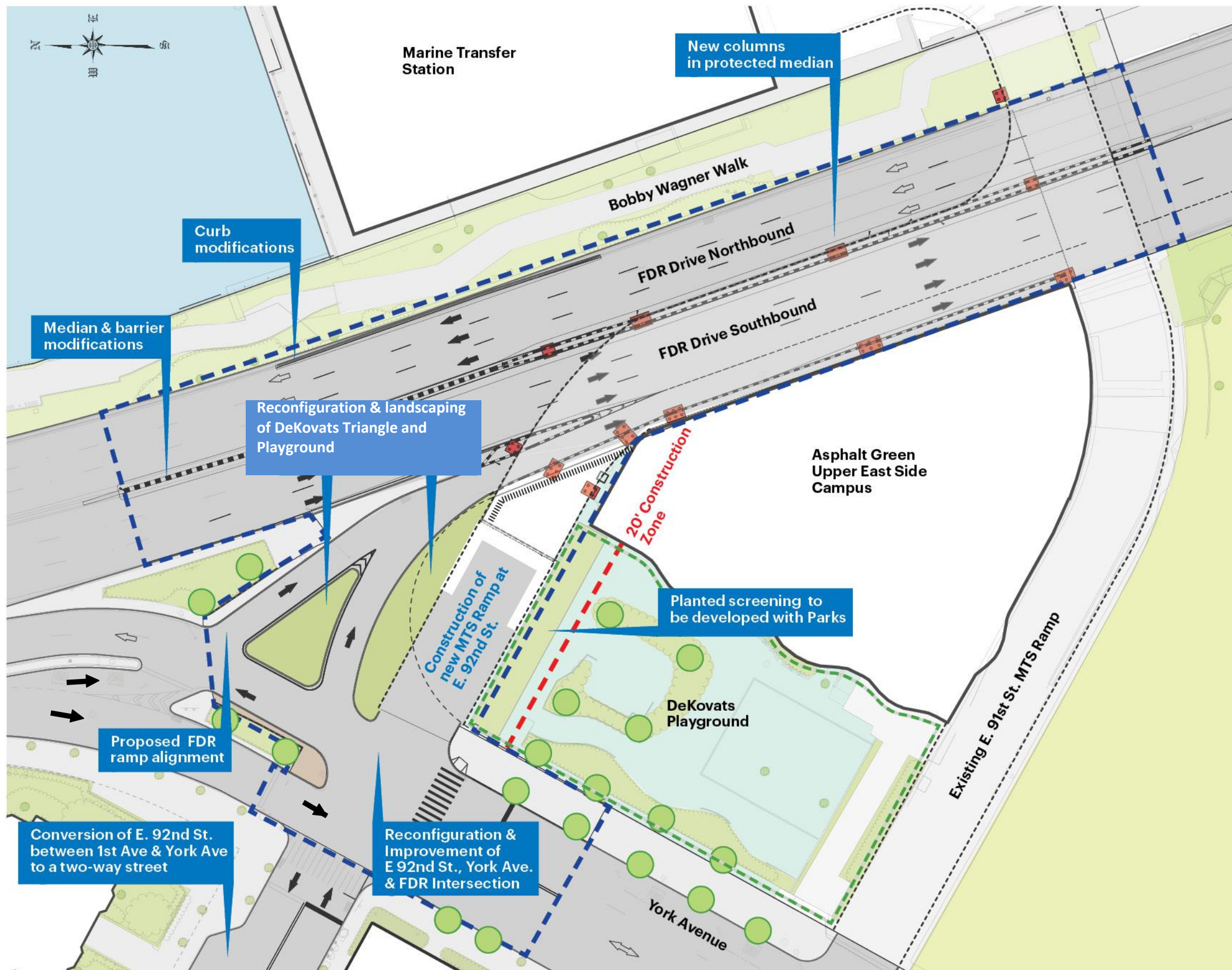
DeKovats Playground - Facing East from York Avenue



LEGEND

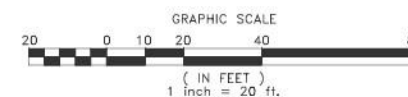
- Asphalt
- Concrete
- Vegetation
- Existing Barrier
- Playground Area
- Block Paver
- Limits of Work
- Playground Boundary





LEGEND

- Limits of Work
- Ramp Abutment
- Asphalt
- Concrete
- Landscape Area
- Block Pavers
- Gravel Area
- Barrier
- Steel Faced Curb
- Column Locations
- Existing Trees to Remain
- Playground Boundary
- Chain Link Fence Barrier in Galvanized Steel Below Structure





Existing Asphalt
Green Signage







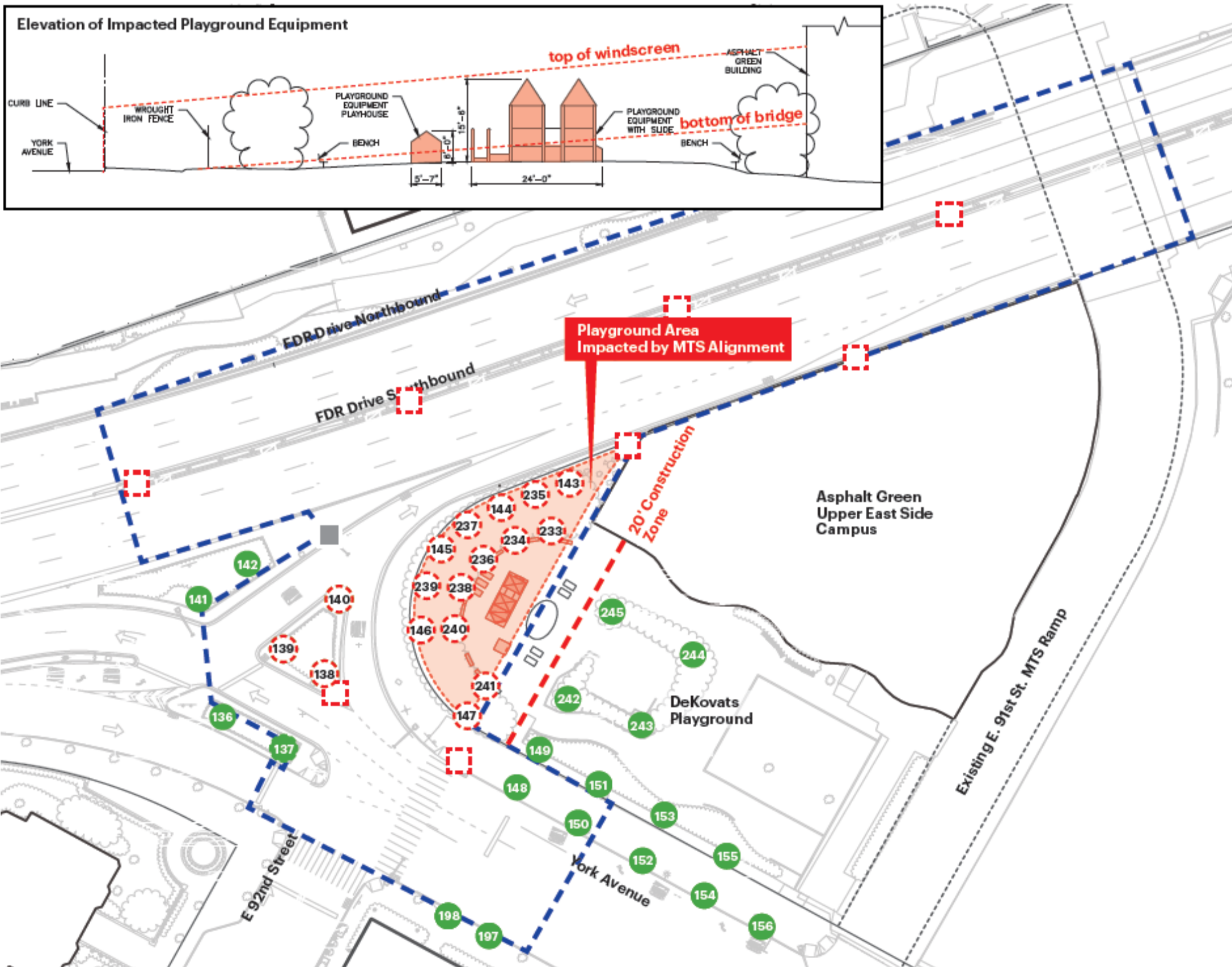
Location of Future
Guard Booth



14 Trees to be Removed
from Playground

Toddler Play
Equipment & Benches
To be Removed

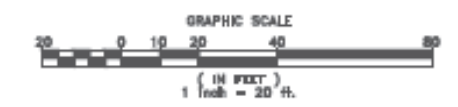


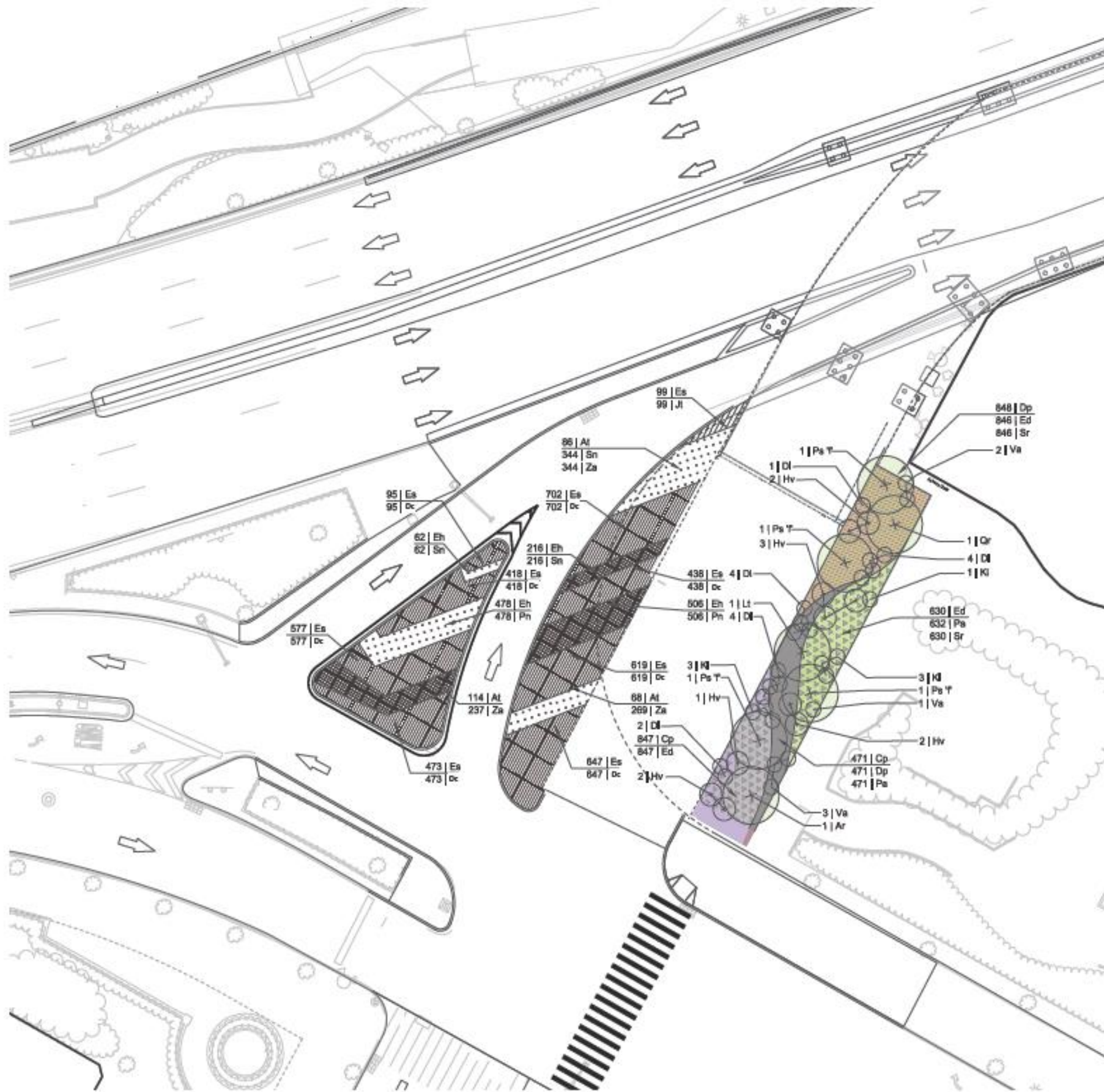


- LEGEND**
- Limits of Work
 - Existing Trees to Remain
 - Existing Trees to Be Removed (17 Total)
 - Existing Street Lighting Poles to Remain
 - Existing Street Lighting Poles to be Removed

TREE LEGEND

#	Scientific Name	Condition Factor
136	Plantanus acerfolia	0.75
137	Plantanus acerfolia	0.65
138	Plantanus acerfolia	0.8
139	Plantanus acerfolia	0.8
140	Plantanus acerfolia	0.65
141	Plantanus acerfolia	0.75
142	Prunus spp.	0.8
143	Plantanus acerfolia	0.65
144	Plantanus acerfolia	0.75
145	Plantanus acerfolia	0.8
146	Plantanus acerfolia	0.65
147	Plantanus acerfolia	0.8
148	Gleditsia triacanthos	0.8
149	Plantanus acerfolia	0.8
150	Gleditsia triacanthos	0.8
151	Plantanus acerfolia	0.8
152	Gleditsia triacanthos	0.8
153	Plantanus acerfolia	0.8
154	Gleditsia triacanthos	0.75
155	Plantanus acerfolia	0.8
156	Quercus rubra	0.65
197	Gleditsia triacanthos	0.8
198	Gleditsia triacanthos	0.65
233	Sophora japonica	0.8
234	Cercis canadensis	0.75
235	Morus rubra	0.8
236	Cercis canadensis	0.75
237	Morus rubra	0.75
238	Cercis canadensis	0.75
239	Sophora japonica	0.75
240	Cercis canadensis	0.75
241	Cercis canadensis	0.75
242	Plantanus acerfolia	0.8
243	Plantanus acerfolia	0.9
244	Plantanus acerfolia	0.9
245	Plantanus acerfolia	0.8





Hv *Hamamelis virginiana*
Witch hazel



Ar *Acer rubrum*
Red maple



Kl *Kalmia latifolia*
Mountain laurel



Lt *Liriodendron tulipifera*
Tulip Tree



Va *Viburnum acerifolium*
Mapleleaf viburnum

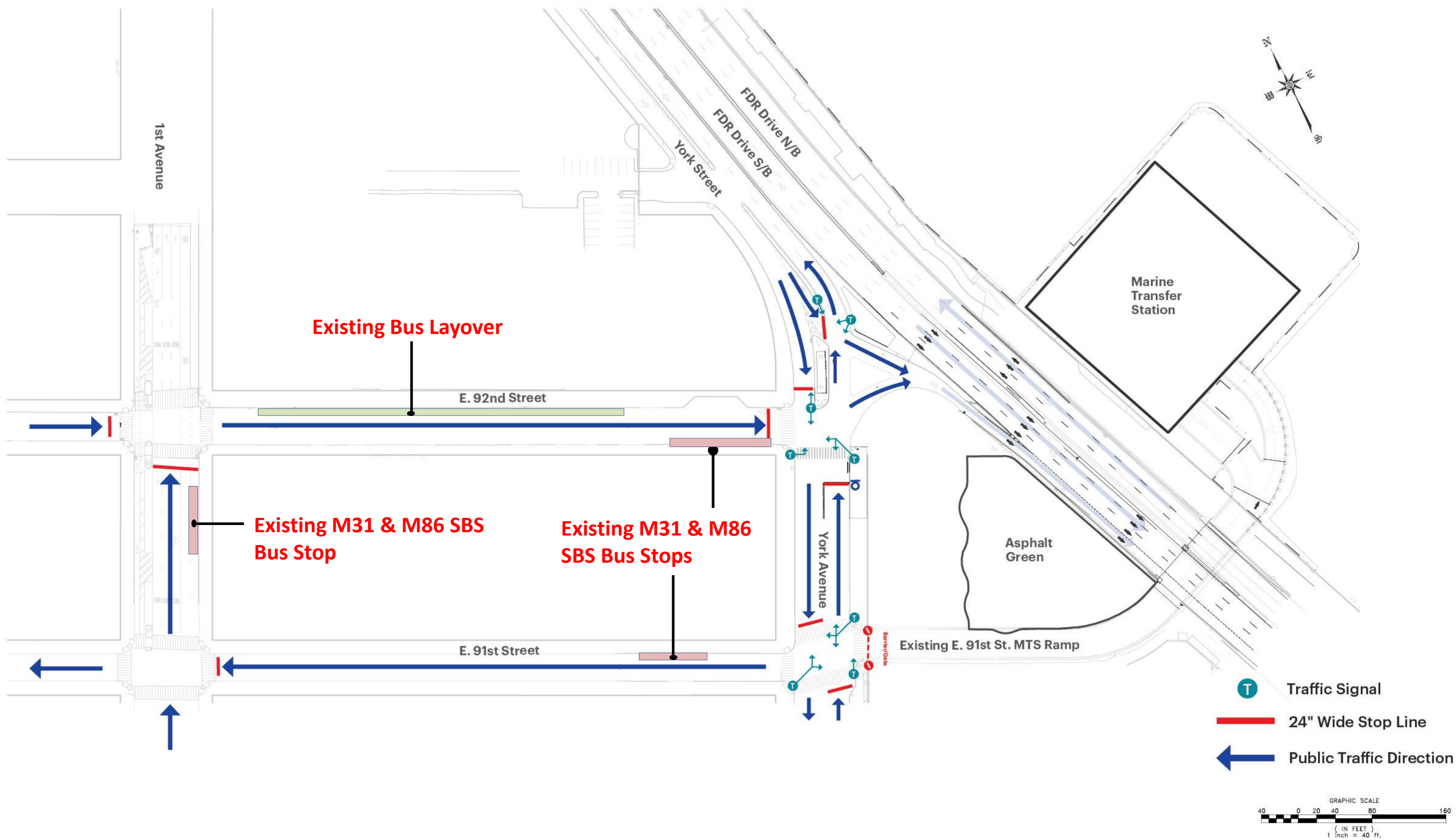


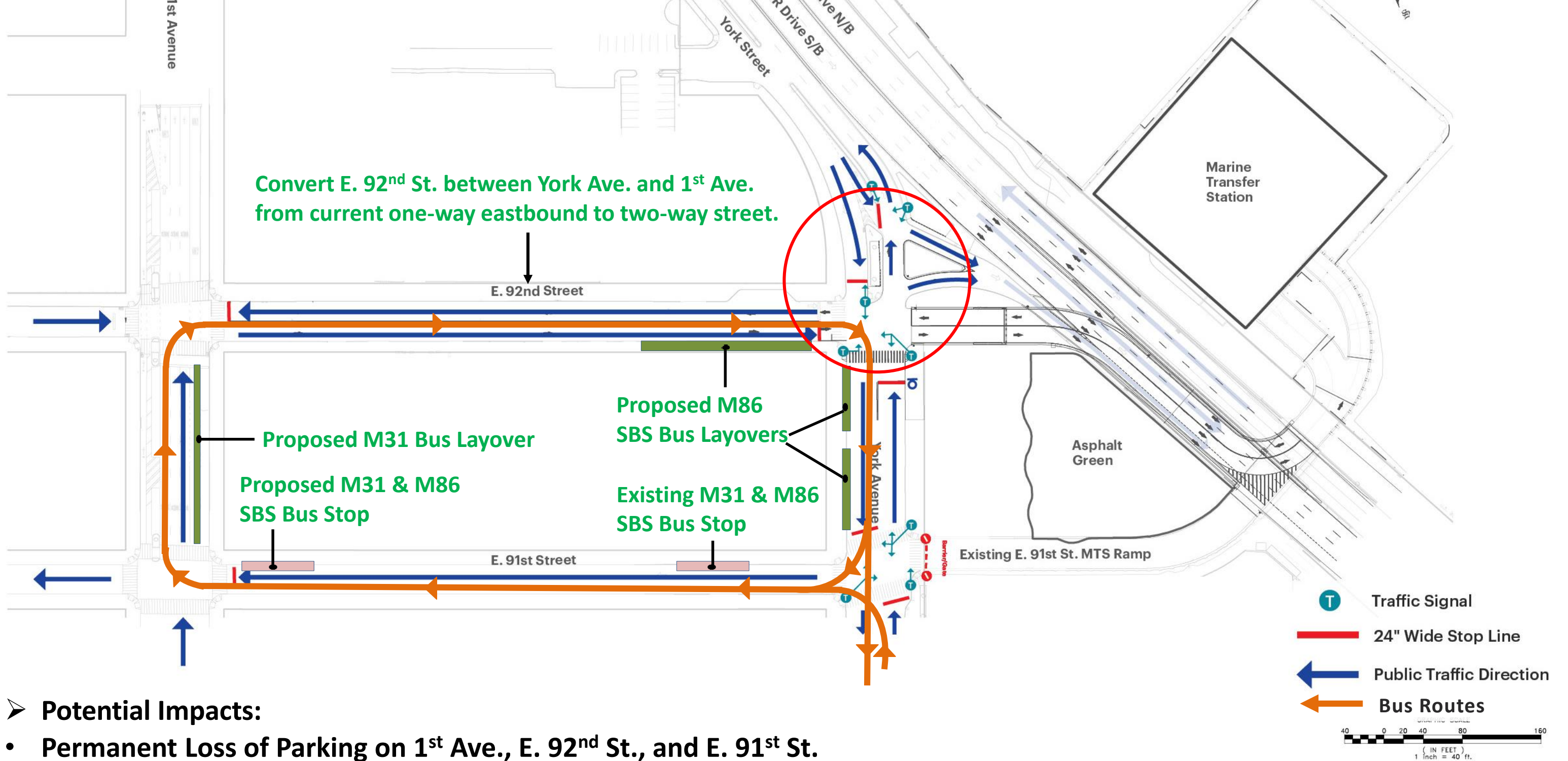
Ps 'P *Pinus strobus 'fastigata*
Fastigate eastern
white pine



Qr *Quercus rubra*
Northern red oak

**7 new trees to be
planted in Playground.
Locations for additional
tree restitution to be
coordinated with NYC
PARKS**



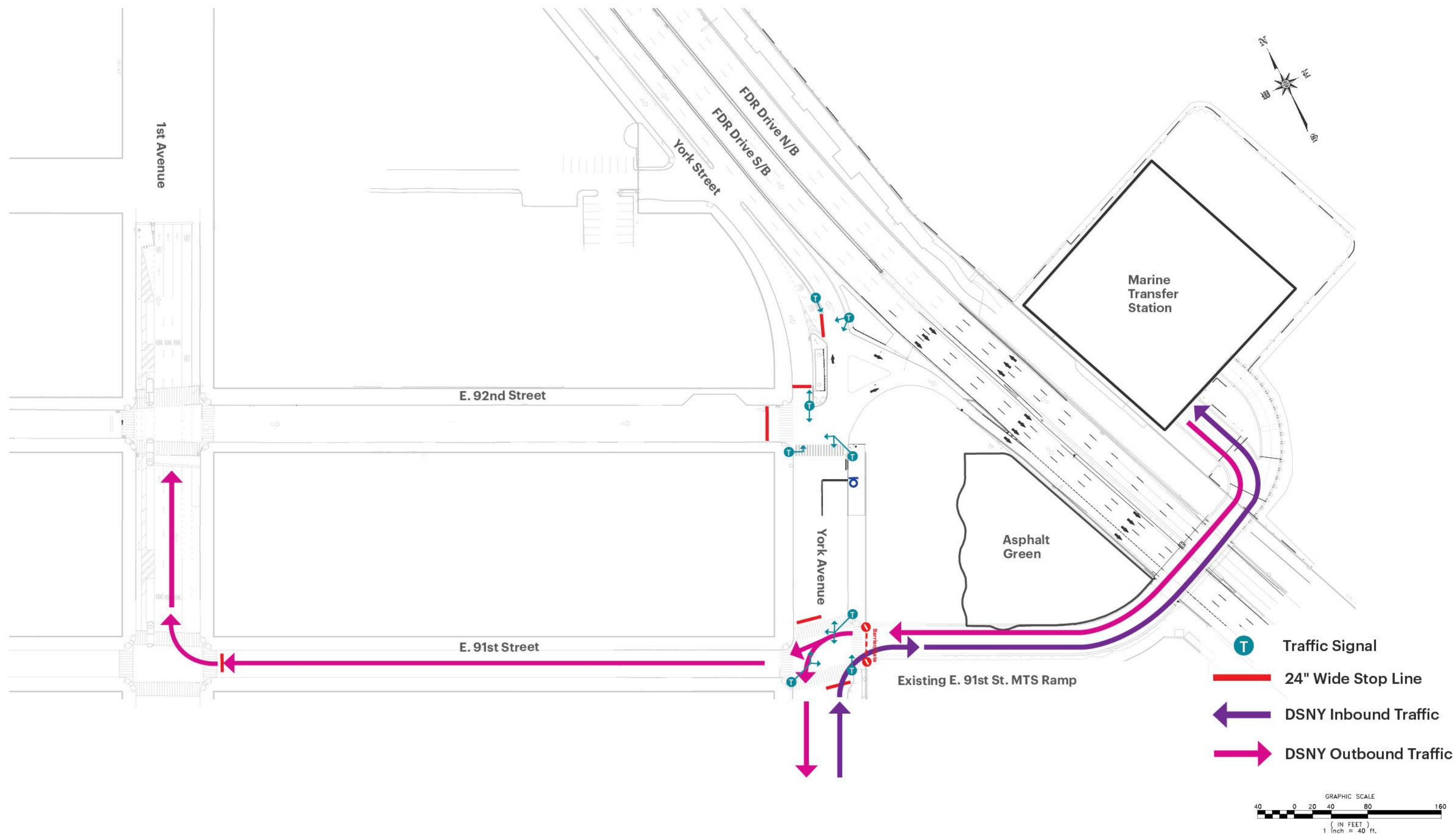


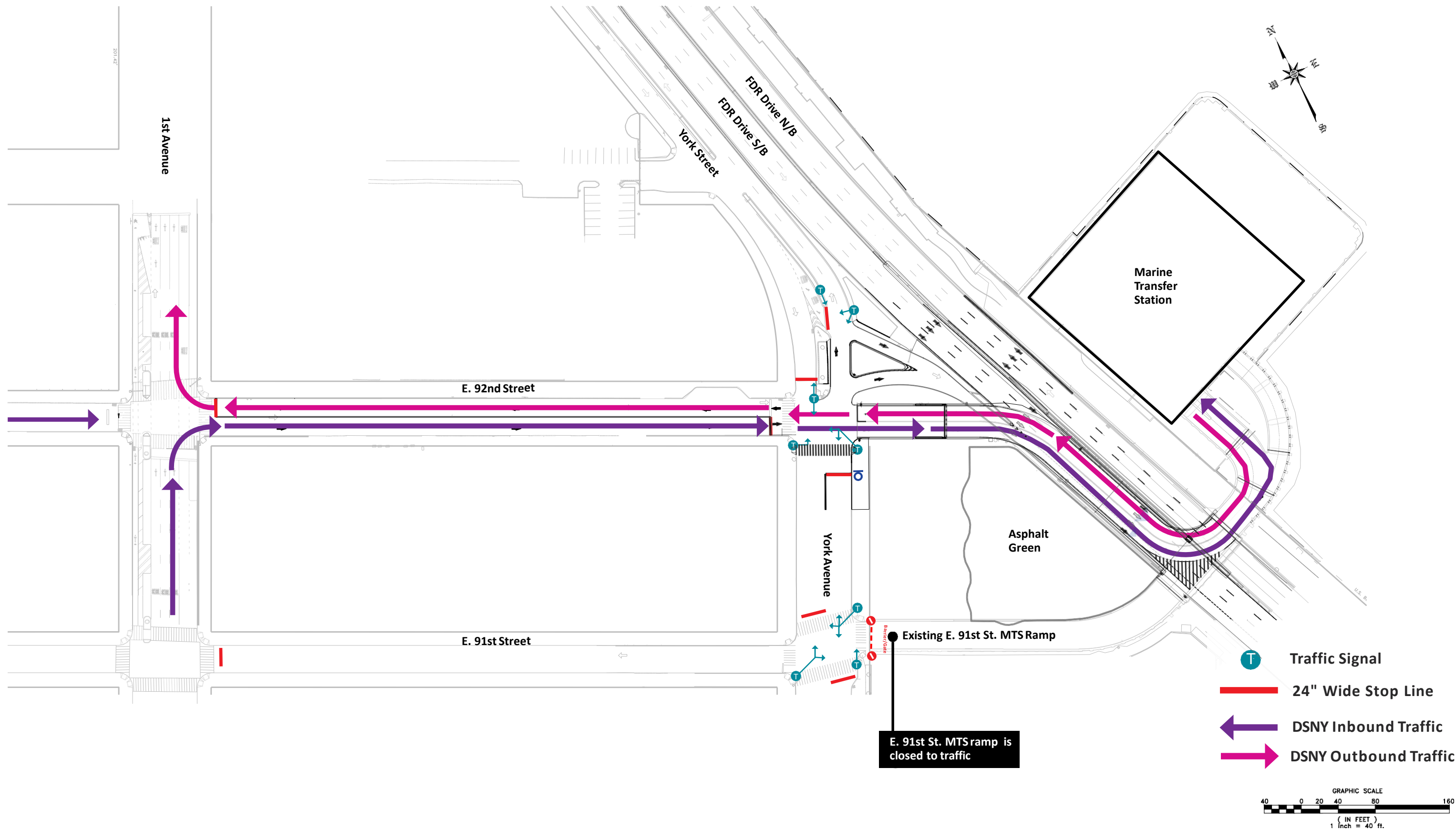
➤ **Potential Impacts:**

- Permanent Loss of Parking on 1st Ave., E. 92nd St., and E. 91st St.
- Residents of houses on E. 92nd St. would have to walk farther to York Ave./E. 91st St. to reach M31 and M86 bus stop that would no longer be on E. 92nd St.

➤ DDC is working on geometric modifications of intersection at York Ave. and E. 92nd Street.

➤ Traffic Analysis is pending DOT & NYCT approvals.





Next Steps:

- **Finalize Traffic and Pedestrian Study**
- **Preliminary Submission to Public Design Commission (PDC)**
- **Mass Mailing No. 2**

THANK YOU



E. 92nd St. MTS Ramp
Borough of Manhattan

Community Board 8M
Preliminary Design
July 10, 2019