



**Parks**

# Honey Locust Park

Located on 59th Street between 1st Avenue & 2nd Avenue,  
in the Borough of Manhattan.

Community Board 8 Review  
June 6, 2019  
Alex Kozar, NYC Parks

**Total Budget:** \$1.67m  
Mayoral - Parks - \$920k FY19  
Mayoral - DEP - \$750k FY19

**Project Size:** 0.29 ac

# Goals

- Create a destination for passive use
- Protect the existing tree canopy of the site
- Improve site safety and accessibility





Manhattan

City 1 MI



Upper East Side

Neighborhood 1500 FT



2nd Ave

14 Honey Locusts Park

60th St.

Queensboro Bridge

1st Ave

59th St.

58th St.

Site 100 FT



NYC Parks

# Honey Locust Park | Project Location



# Flood Hazard Zones

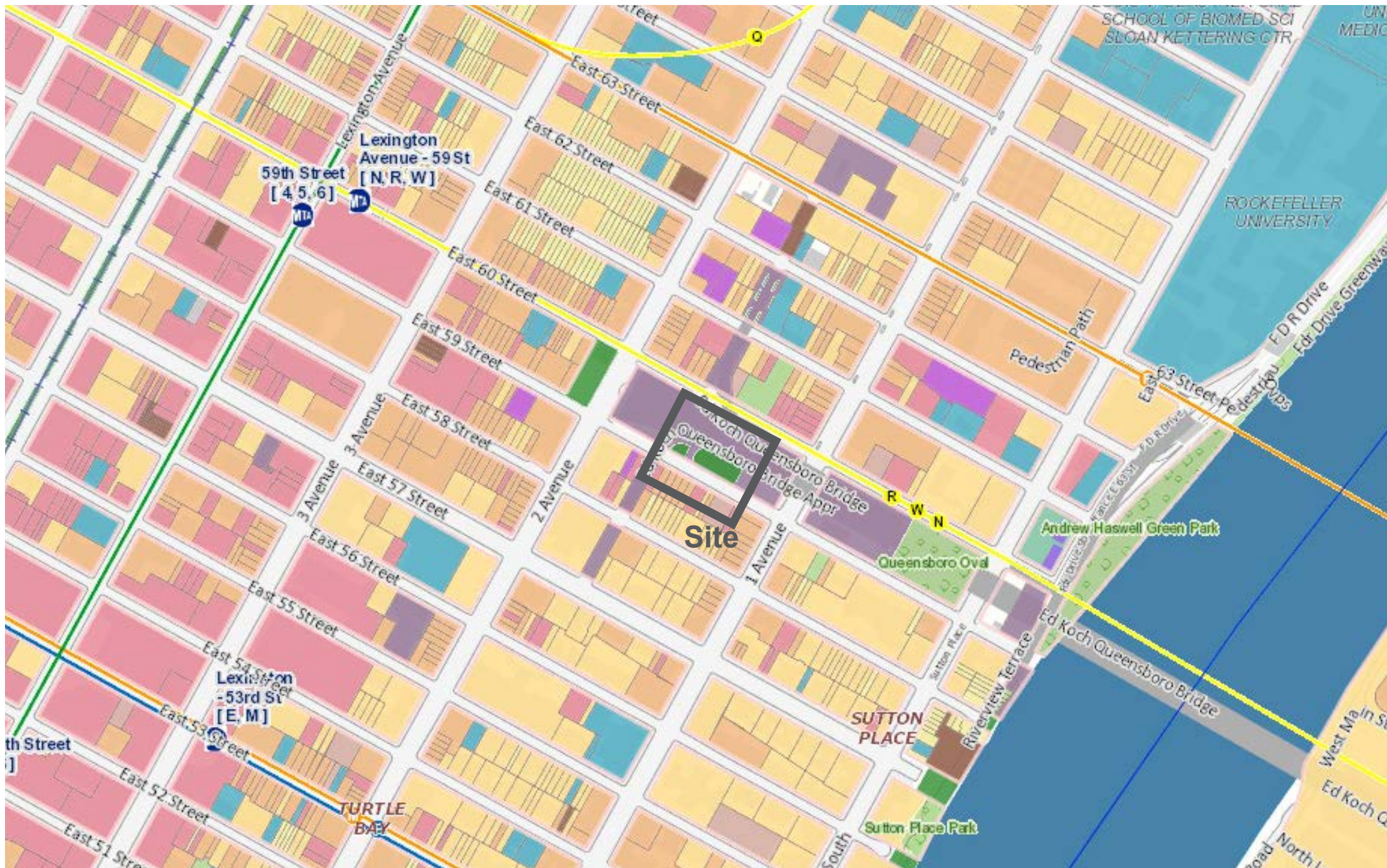
## 2015 Preliminary 100-year Floodplain

**1% Annual Chance Floodplain (100 Year Floodplain)** The area that has a 1% chance of flooding in any given year.

## 2050s Projected 100-year Floodplain

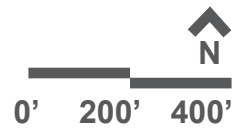
The potential areas that could be impacted by the 100-Year flood in the 2050s based on projections of the high-estimate 90th percentile sea level rise scenario (NYC Panel on Climate Change (NPCC) 2015 data).

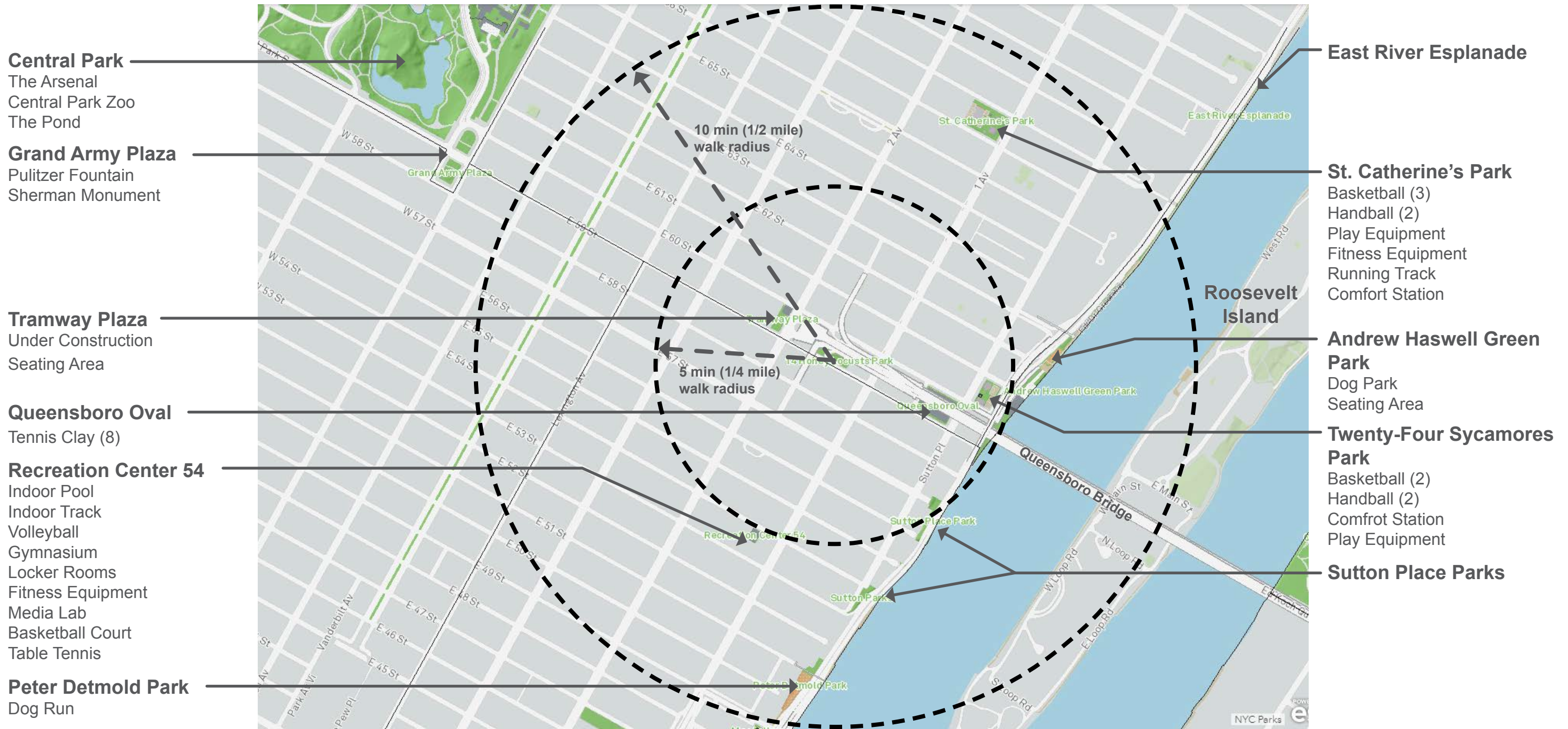




## Land Use Categories

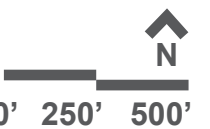
- 1 And 2 Family Residential
- Multi-Family Residential
- Mixed Use
- Open Space And Outdoor Recreation
- Commercial
- Institutional
- Industrial
- Parking
- Transportation / Utilities
- Vacant Lots

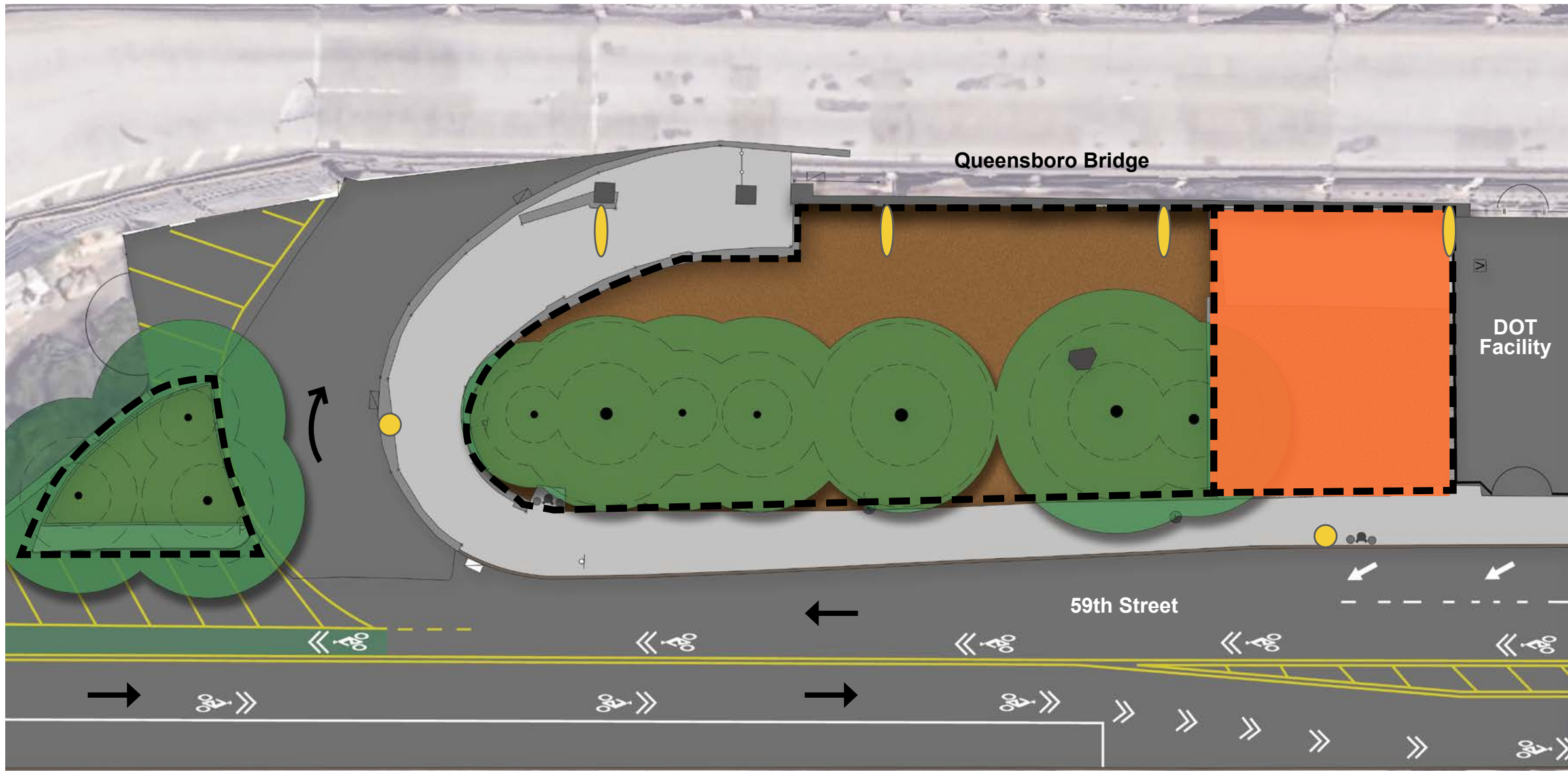













NYC Parks

## Honey Locust Park | Neighborhood Context



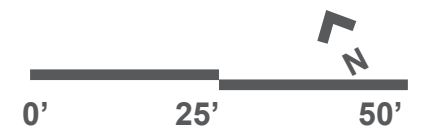


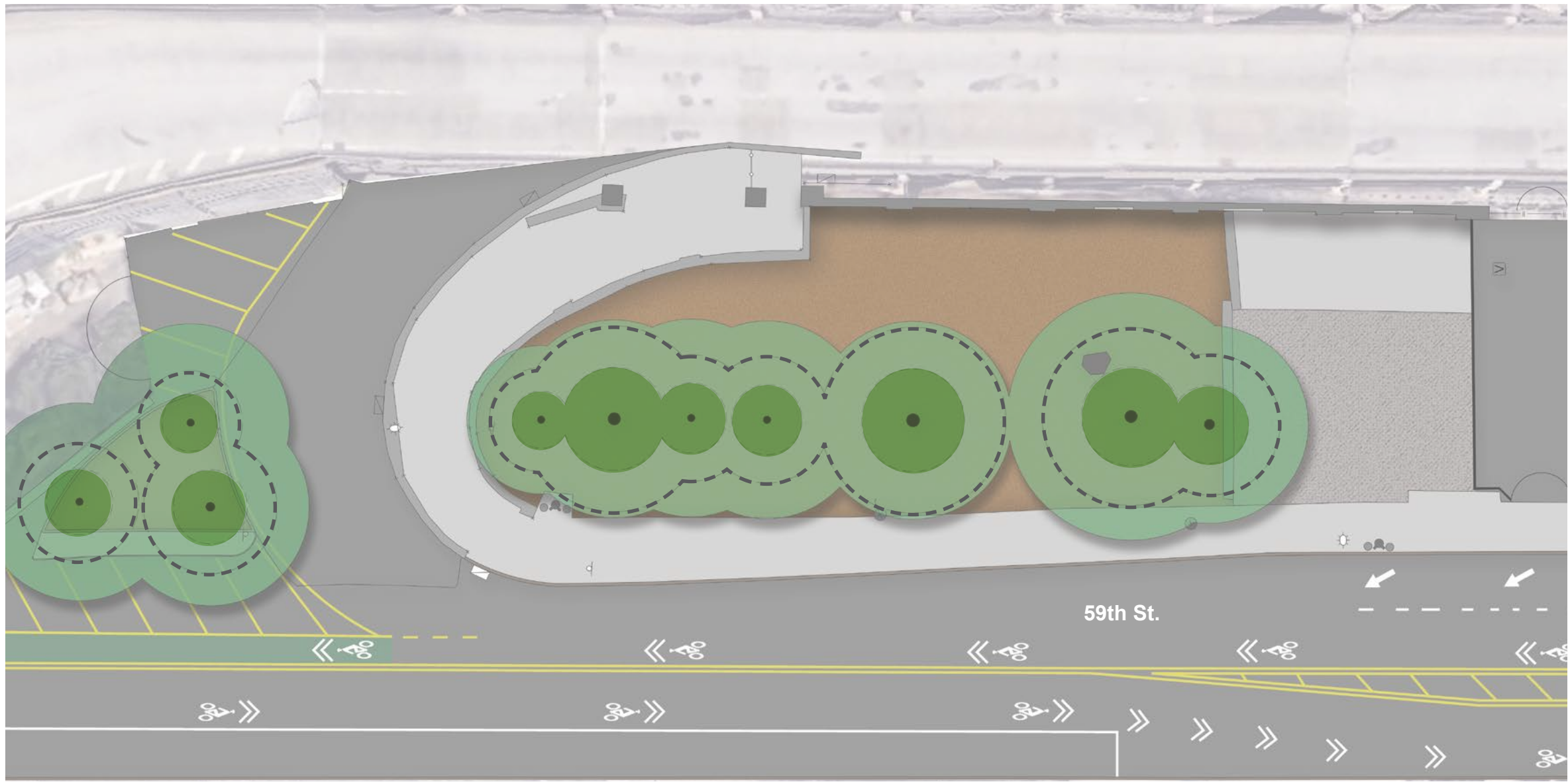
### Legend

-  Project Limit
-  Current DOT Parking
-  Wood Chips on Broken Concrete Pavement
-  Roadway
-  Concrete Sidewalk
-  Tree
-  Street Lightpole
-  Bridge Lightpole
-  Traffic

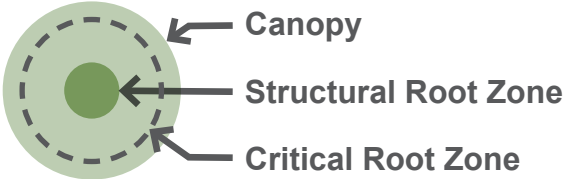


## Honey Locust Park | Existing Conditions

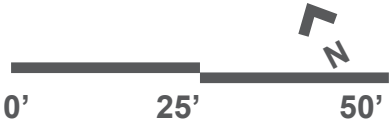




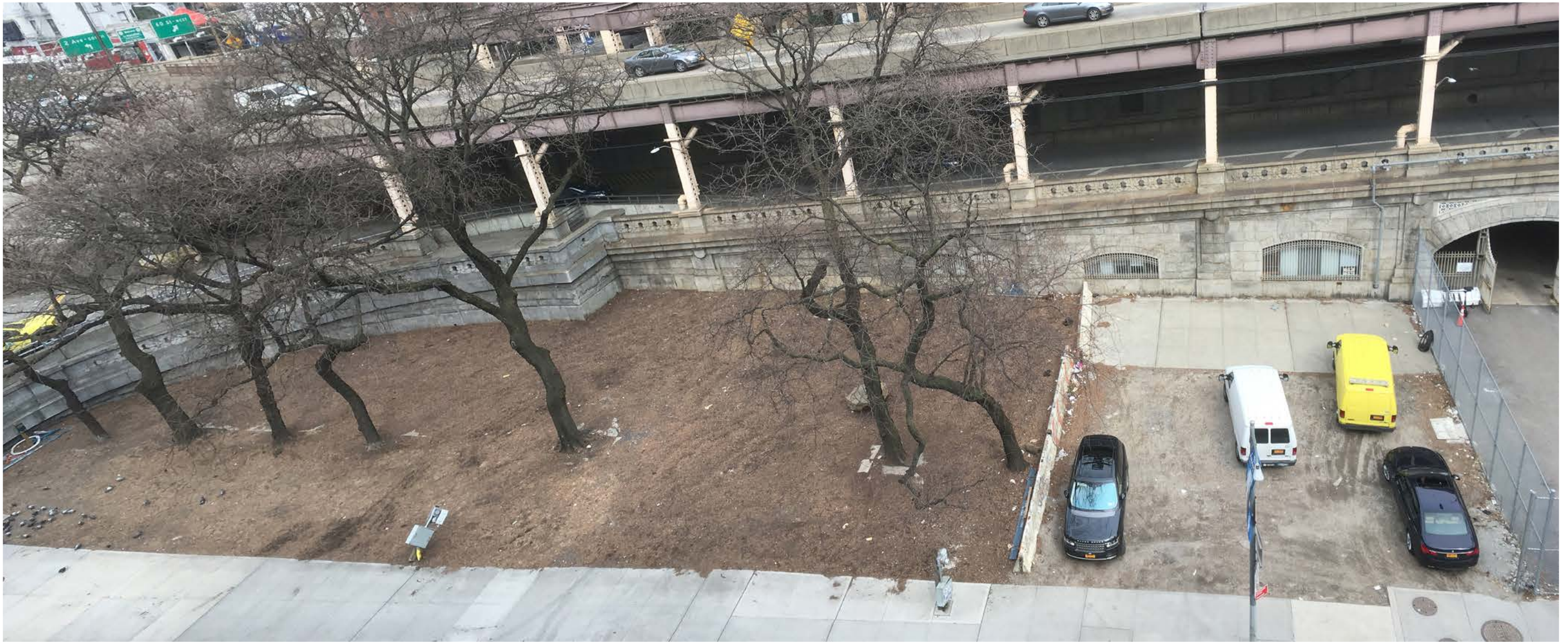
**Legend**



**Honey Locust Park | Tree Inventory**



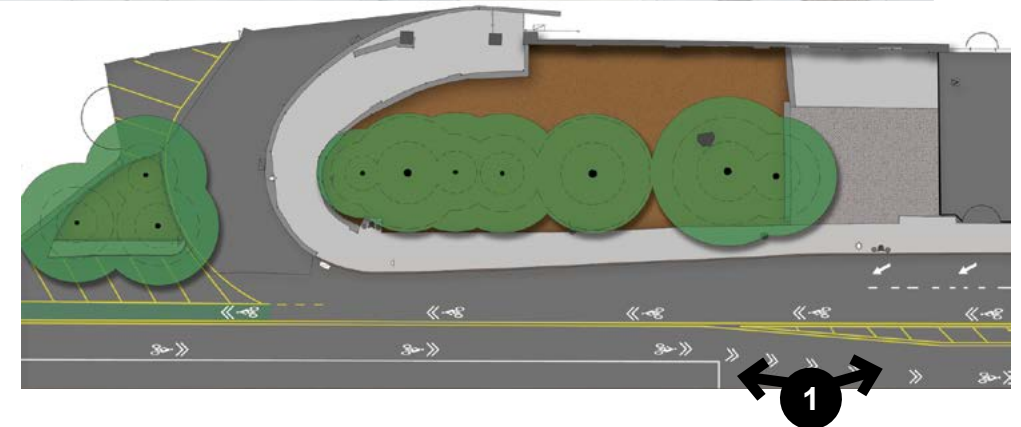




1 - Birds Eye View

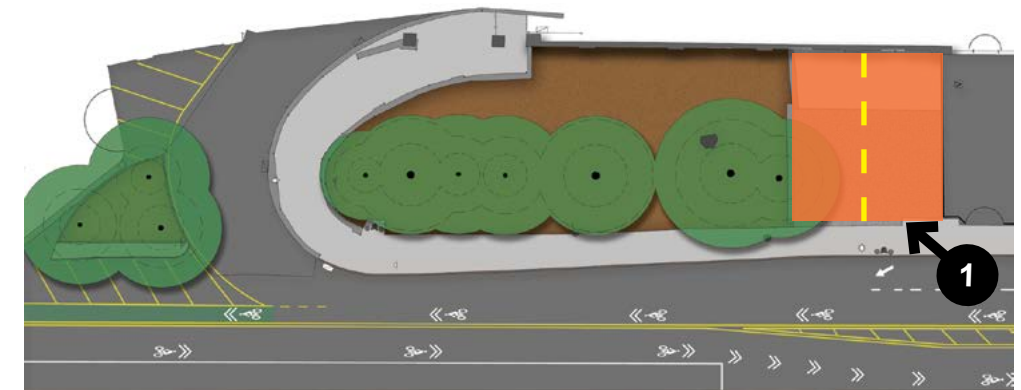


Honey Locust Park | Site Photos





1 - A Portion of DOT Parking to be Reclaimed As Part of the Park

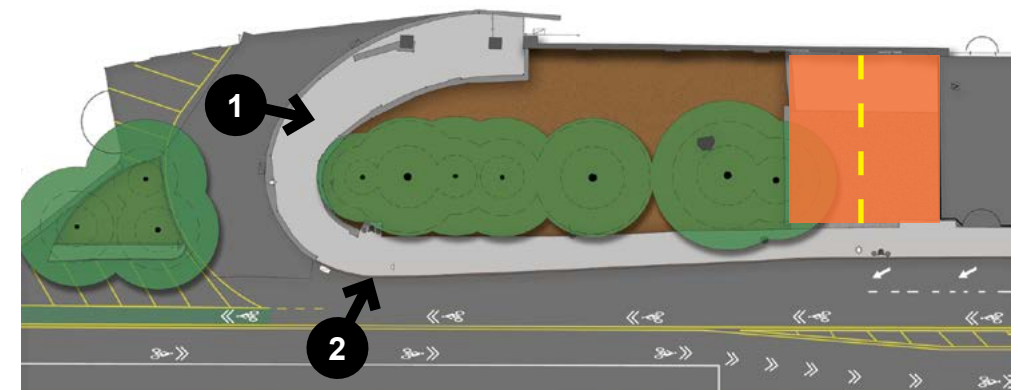




1 - Lower Outer Queensboro Vehicle Lane

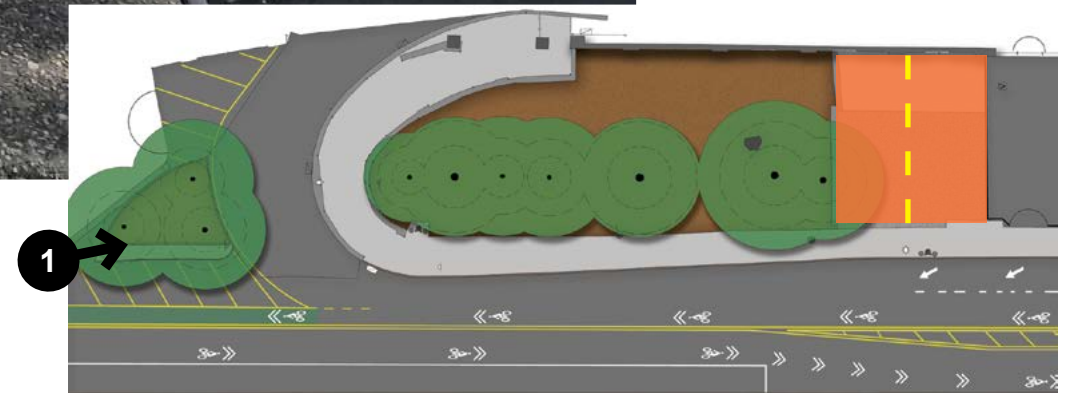


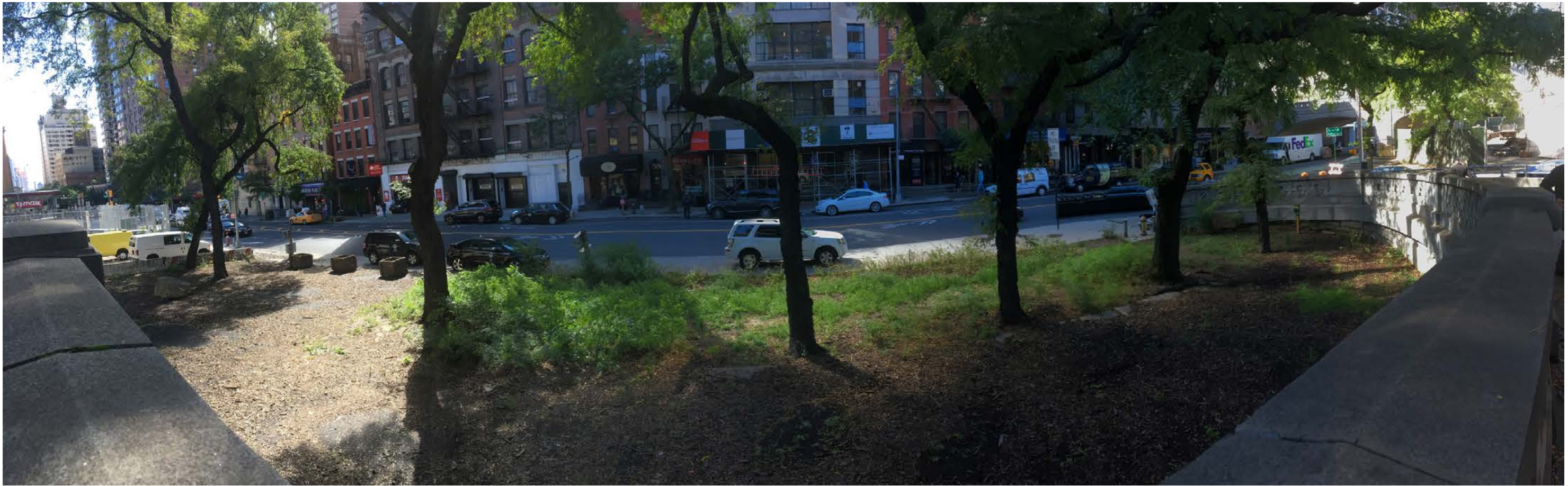
2 - Pedestrian Ramp from Across 59th



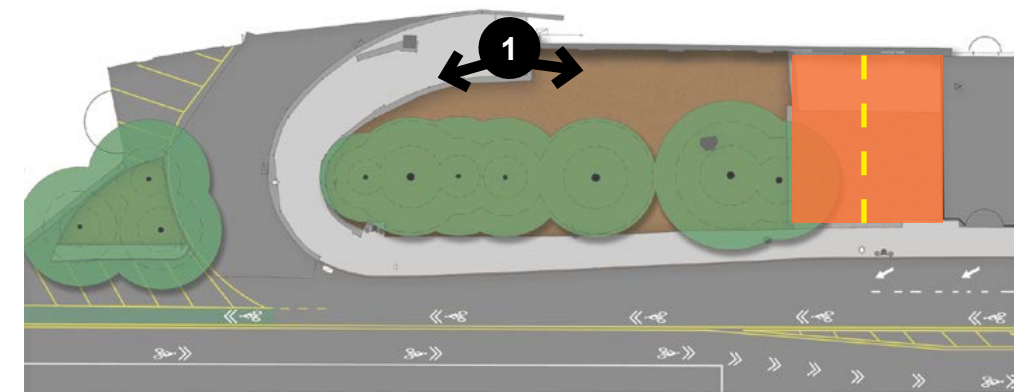


1 - View of Triangle Island





1 - View from Bridge Platform

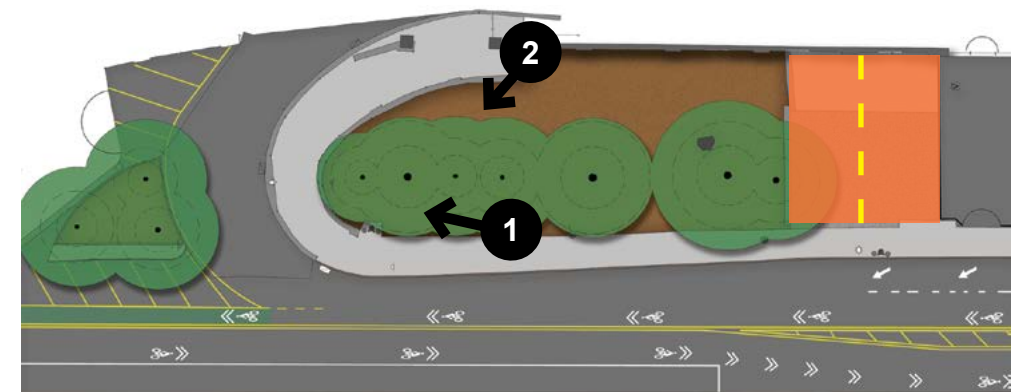




1 - Looking West from Sidewalk



2 - Looking West from Bridge Platform

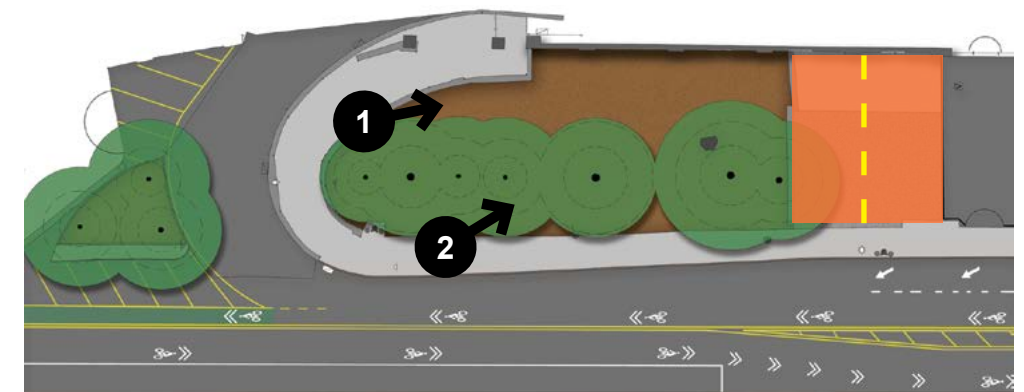




1 - Looking East from Bridge Platform



2 - Looking East from Sidewalk



Queensboro Bridge

See Enlargement

Reduced DOT Parking Area

DOT Facility

Reconstruct Curbs

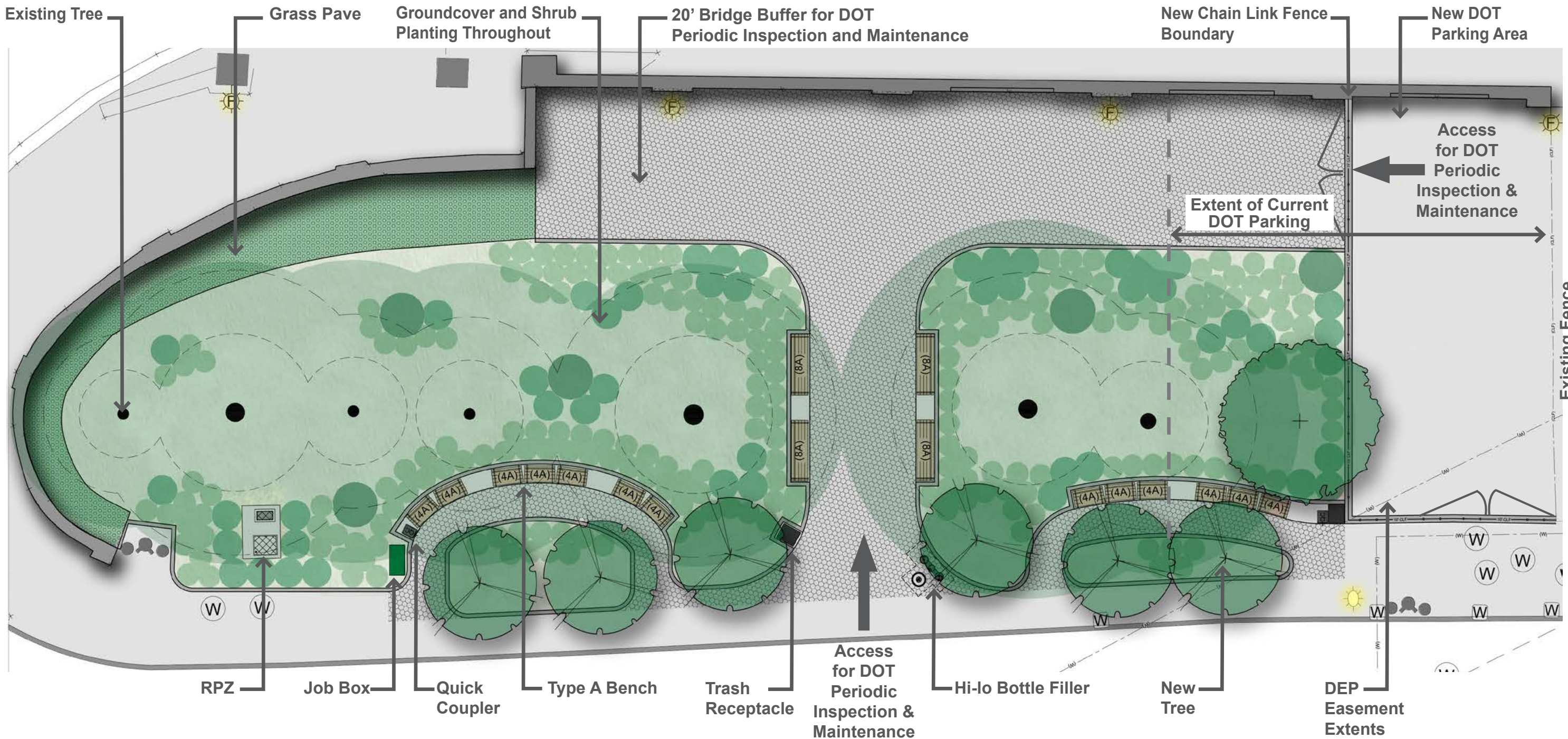
59th Street



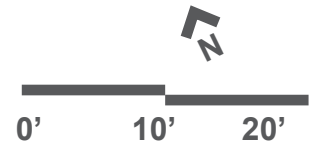
Honey Locust Park | Site Plan







**Honey Locust Park | Schematic Plan**





French Grey, Mottled Finish



Type A Bench with Weathered Wood RPL Slats, 4' & 8' Wide



GEOBLOCK Grass Pave



Job Box Storage



Dog Bag Dispenser



Big Belly Receptacle



Hi-Lo Bottle Filler - Black



NYC Parks

# Honey Locust Park | Site Furnishings



**Gleditsia triacanthos - Existing**



**Amelanchier canadensis**



**Cornus 'Constellation'**



**Aucuba japonica**



**Clethra alnifolia**



**Cornus sericea**



**Hydrangea quercifolia**



**Itea virginica**



**Prunus 'Otto Luyken'**



**Rhododendron PJM**



**Viburnum rhytidophyllum**





**Asclepias tuberosa**



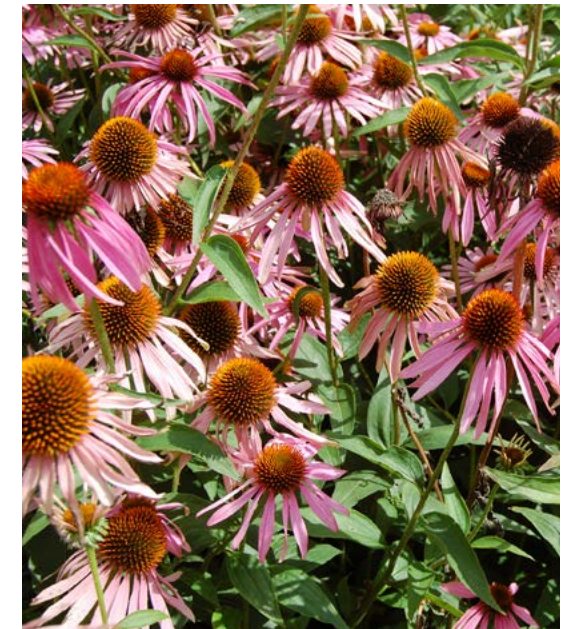
**Athyrium felix-femina**



**Athyrium niponicum pictum**



**Carex rosea**



**Echinacea purpurea**



**Eupatorium purpureum**



**Hakonechloa macra aureola**



**Liatris spicata**

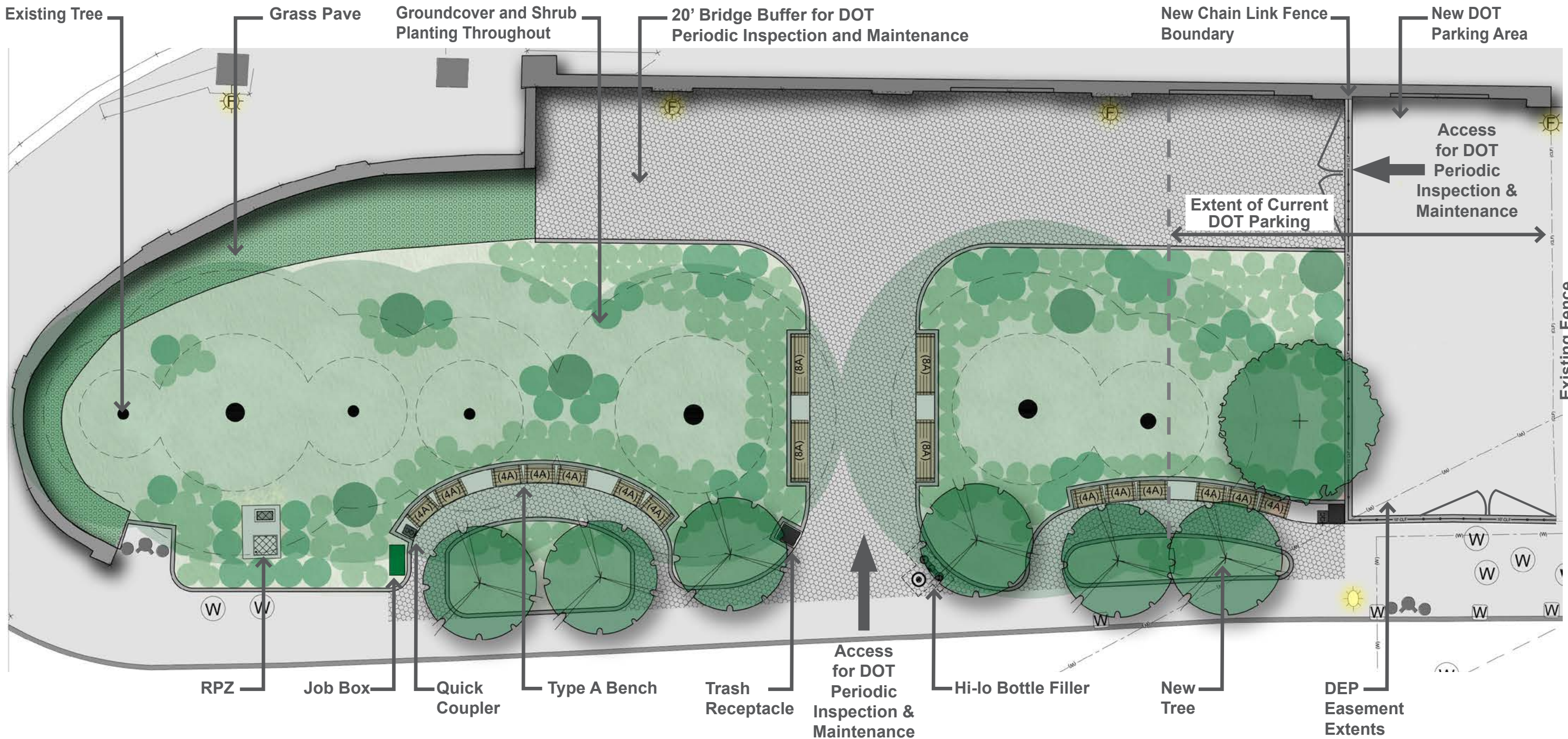


**Liriope muscari**



**Lobelia cardinalis**





**Honey Locust Park | Schematic Plan**