



# East River Esplanade

## CB8 Meeting

April 11, 2018

Gabrielle Czernik, Allaire O'Connor  
Parks Capital Design

# Parks

## E 88th - E 90th St



Open to Public

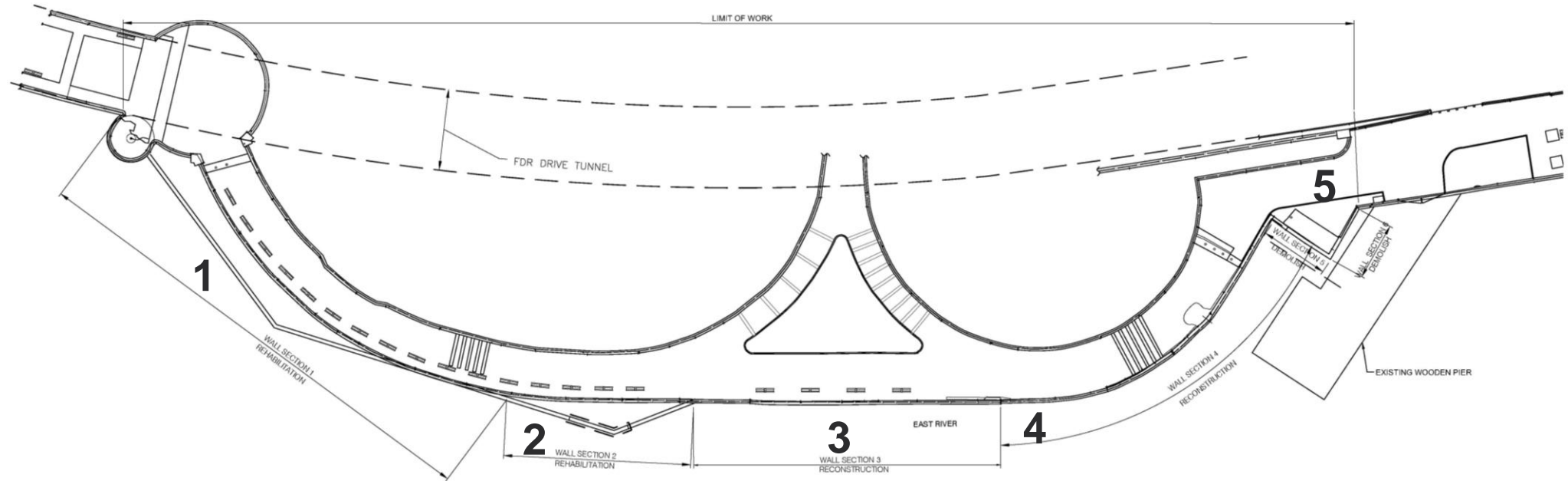
In Progress

→ Temporary Ferry Access

→ Construction Access

Temporary Bridge

## ERE 88<sup>th</sup> – 90<sup>th</sup>



### Wall Section 1

- Original Minor Rehab now Pile Stabilization;

### Wall Section 2

- Original Rehab now Reconstruction

### Wall Section 3

- Full Reconstruction

### Wall Section 4

- Full Reconstruction

### Wall Section 5

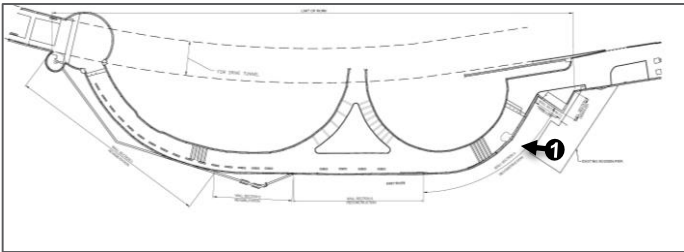
- Full Reconstruction



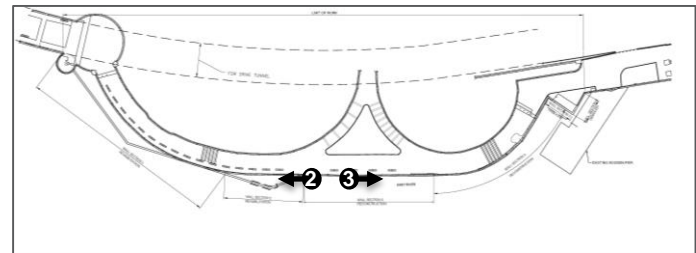
NYC Parks

East River Esplanade  
E 88th – E 90th St

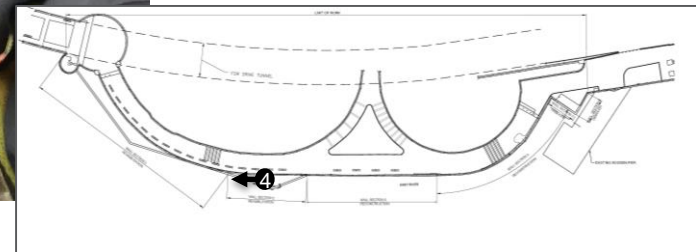




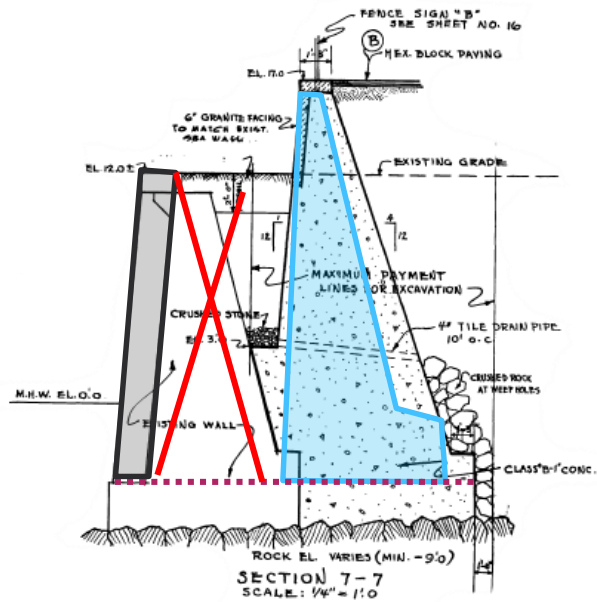






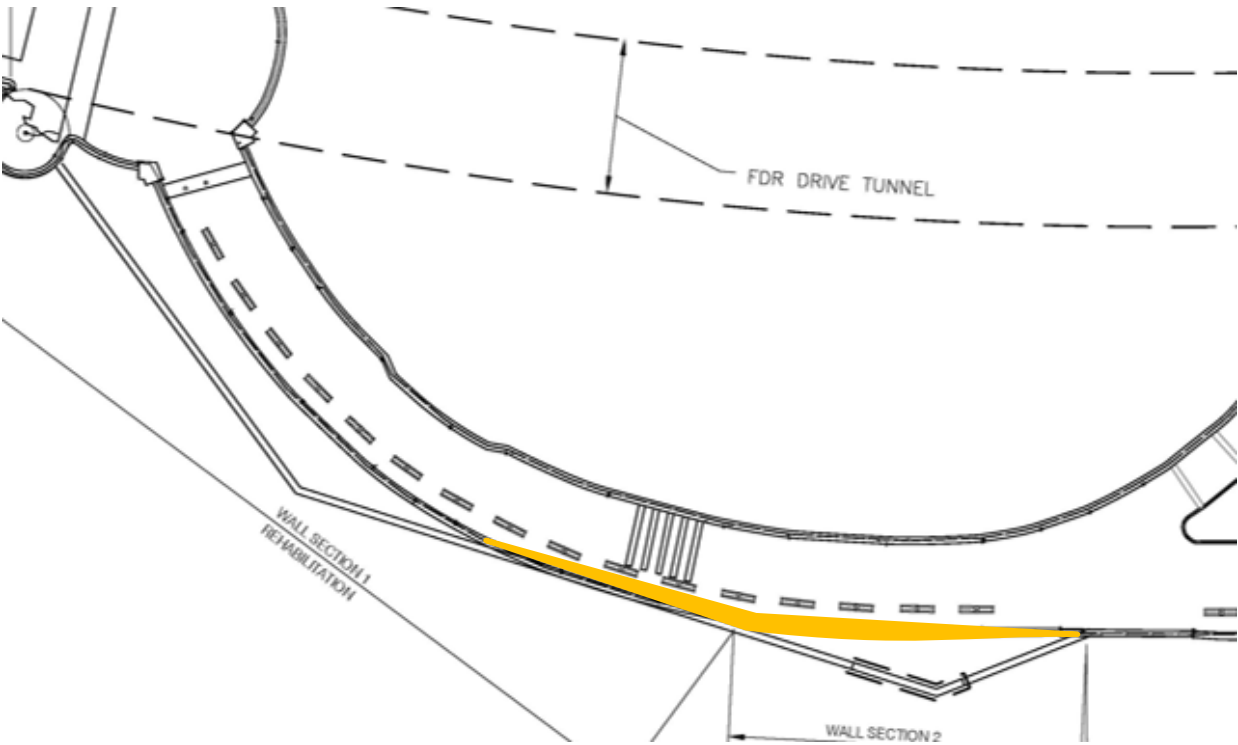


# Expected Reconstruction



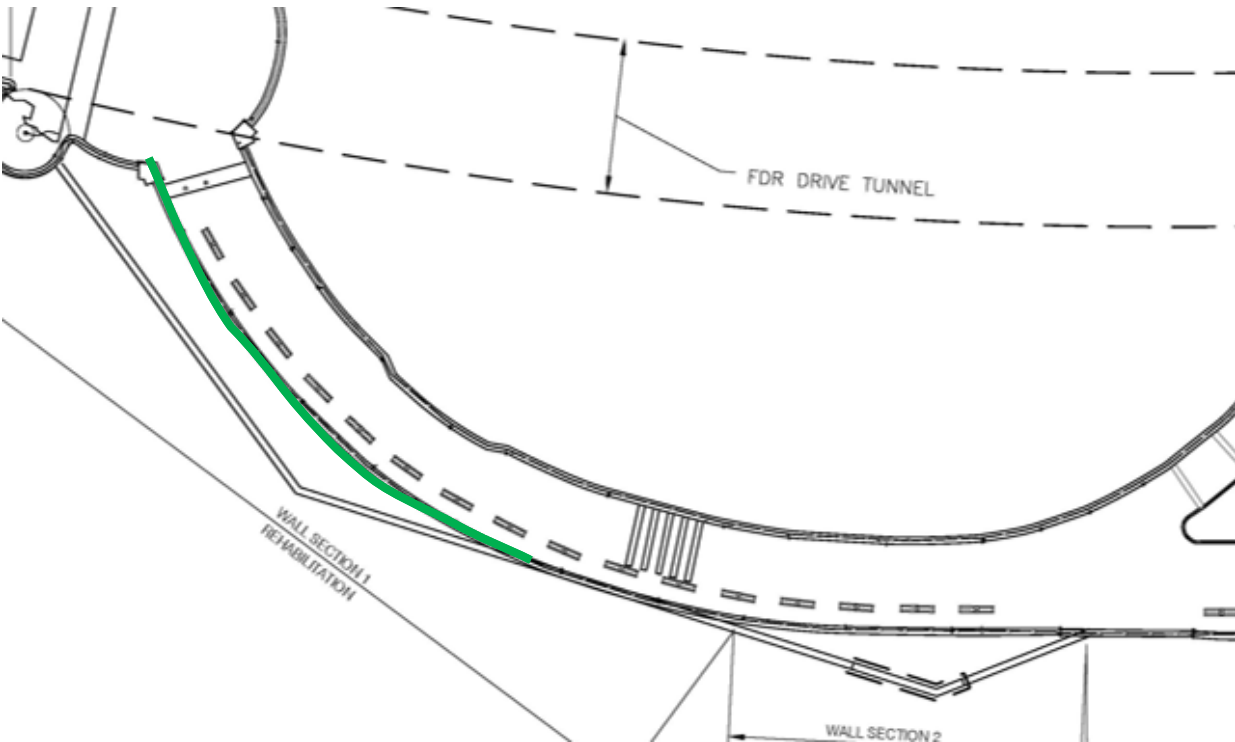
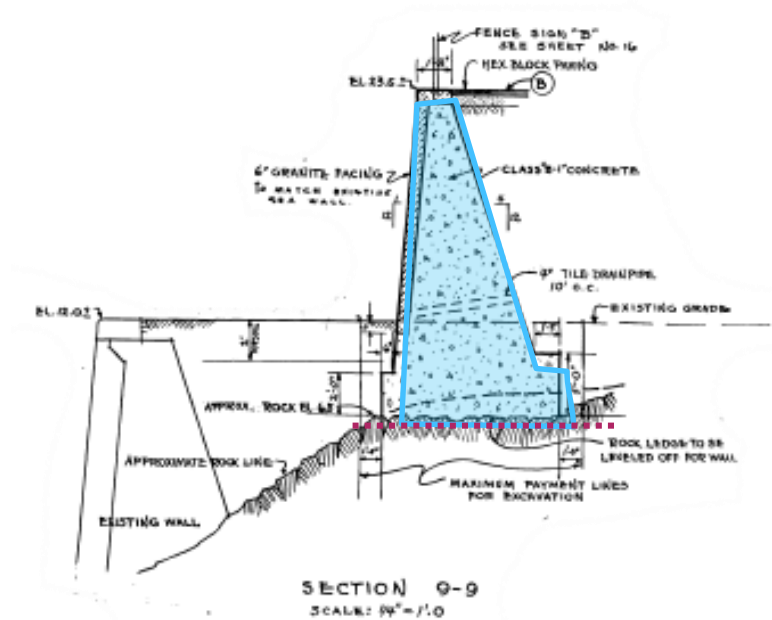
Legend:

- Field Determined Dimensions
- Wall Section 2
- Weathered Rock Line
- Stone Wall



East River Esplanade  
E 88th – E 90th St

# Expected Rehabilitation



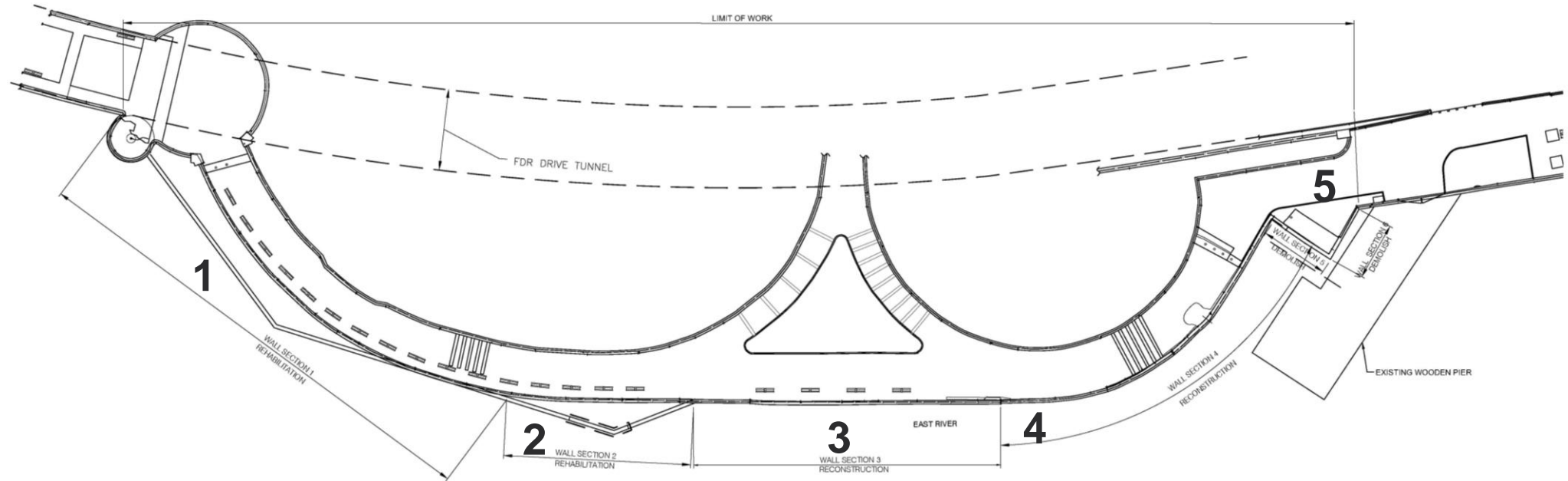
Legend:

- Field Determined Dimensions
- Wall Section 1
- Weathered Rock Line





## ERE 88<sup>th</sup> – 90<sup>th</sup>



### Wall Section 1

- Original Minor Rehab now Pile Stabilization;

### Wall Section 2

- Original Rehab now Reconstruction

### Wall Section 3

- Full Reconstruction

### Wall Section 4

- Full Reconstruction

### Wall Section 5

- Full Reconstruction

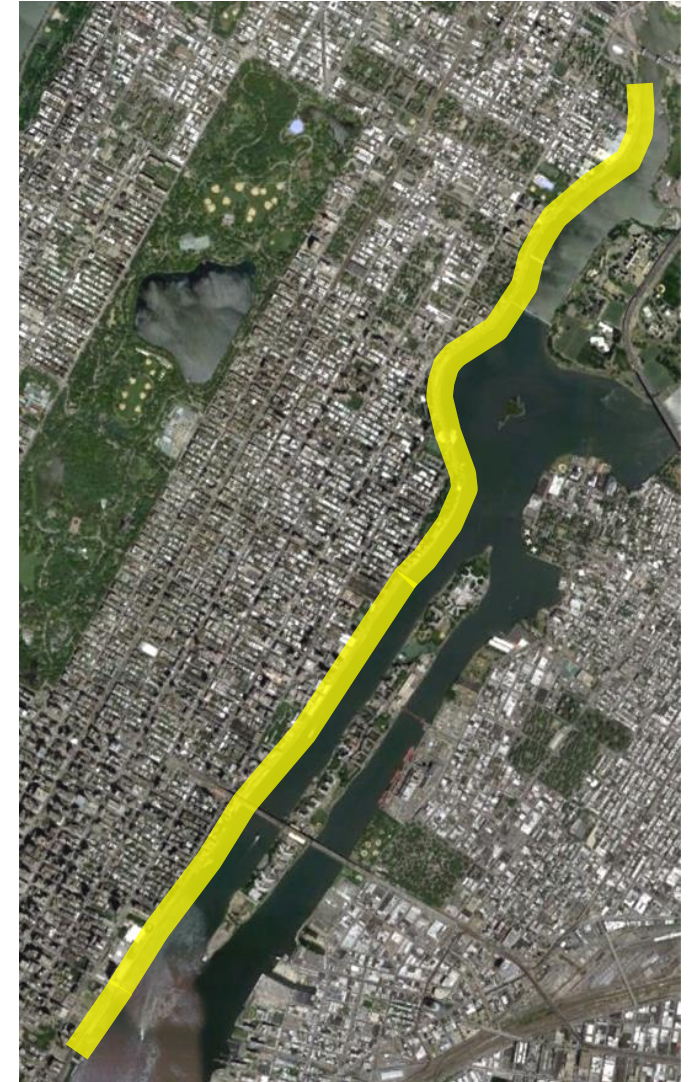


NYC Parks

East River Esplanade  
E 88th – E 90th St

## Waterfront Structure Re-inspection

- Previous inspection was conducted in 2012 and 2013
- Efforts are being led by EDC and their consultant team, PennMax
- New inspection report expected June 2019
- Phase 2 project sites to be re-inspected in 2019



NYC Parks

East River Esplanade  
Phases 2 & 3

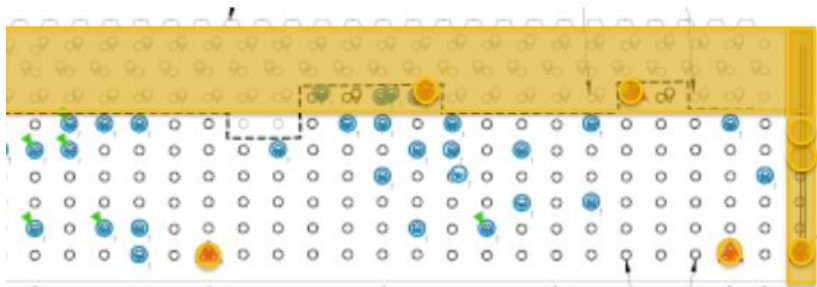


Repair Level
Level 1
Level 2
Level 3
Level 4
Recon- struction

Less Comprehensive  
Less \$

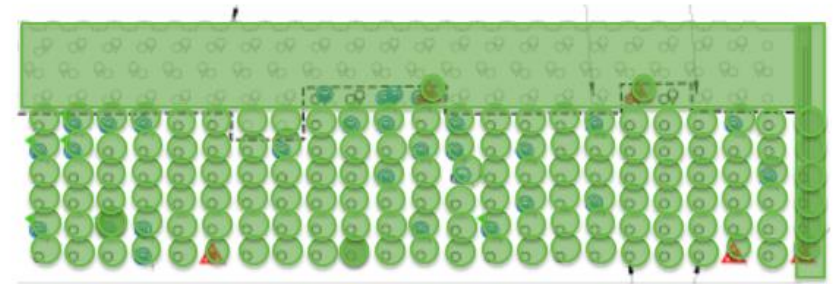


More Comprehensive  
More \$



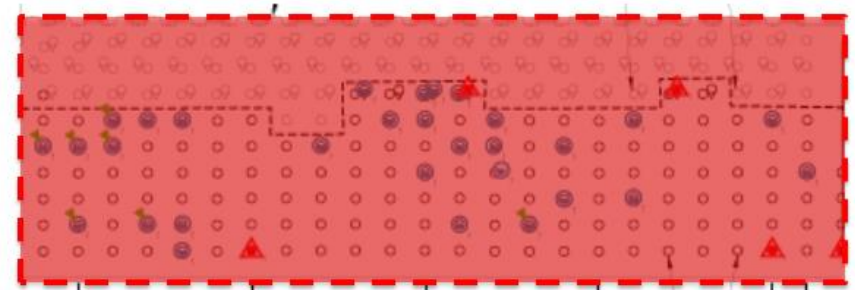
**Original Scope (Level 1 Repairs)**

Priority underdeck repairs of severe and advanced damages



**Full Repair (Level 4 Repairs)**

All components brought to a state of good repair



**Reconstruction**

Complete reconstruction of the local structure



NYC Parks

East River Esplanade  
Phases 2 & 3

# Proposed Scope



East River Esplanade  
Phases 2 & 3



NYC Parks

Phase 2			
<u>Location</u>	<u>Proposed Scope</u>	<u>Cost Estimate</u>	<u>Applied Funds</u>
E 117th St	Level 4 Complete Structural Repairs	<b><u>\$3.8M</u></b> (Projected)	\$6M City Council  \$15M POA  \$4M Mayoral  <b>Total: \$25M</b>
E 116th St	LEVEL 4 Complete Structural Repairs	<b><u>\$1.0M</u></b>	
E 115th- E 116th St	LEVEL 4 Complete Structural Repairs	<b><u>\$5.9M</u></b>	
E 114th - E 115th St (full closure)	Full Reconstruction	<b><u>\$7.8M</u></b>	
E 114th St (full closure)	Full Reconstruction	<b><u>\$6.5M</u></b>	

Phase 3			
<u>Location</u>	<u>Proposed Scope</u>	<u>Cost Estimate</u>	<u>Applied Funds</u>
E 92nd - E 94th St	LEVEL 4 Complete Structural Repairs	<b><u>\$18.8M</u></b>	\$57.8M Mayoral  \$1M (water service @ 90 <sup>th</sup> -96 <sup>th</sup> Street) City Council  <b>Total: \$58.8M</b>
E 90th - E 92nd St	LEVEL 4 Complete Structural Repairs	<b><u>\$16.7M</u></b>	
E 62nd - E 63rd St	LEVEL 4 Complete Structural Repairs	<b><u>\$22.3M</u></b>	

Results from 2018 ongoing inspections may affect site selection.  
 Actual repair costs will be determined based on additional analysis and will be revised after construction bids.





Recent Closures			
Partial closures for safety concerns based on recent inspection information. Waterside portion of structure fenced off from public access in February 2019. Through-passage is still possible at these sites.			
<u>Location</u>	<u>Proposed Scope</u>	<u>Cost Estimate</u>	<u>Applied Funds</u>
E 111 <sup>th</sup> St (partial closure)	TBD	<u>TBD</u>	TBD (funds may be available in ERE budget)
E 94 <sup>th</sup> - E 96 <sup>th</sup> St (partial closure)	TBD	<u>TBD</u>	
E 77 <sup>th</sup> St (partial closure)	TBD	<u>TBD</u>	

**Questions?**