

EQUINOX 140 EAST 63RD STREET NEW YORK

AKA 817 LEXINGTON AVENUE
STOREFRONT INSTALLATION
FEBRUARY 27, 2019

PROJECT DESCRIPTION

Lexington Avenue Façade / Ground floor: Remove existing glass door with sidelight, block wall and overhead moulding and replace with new storefront glazing infill to match existing ground floor storefront system, new moulding and curb to match existing conditions

No work proposed on the East 63rd Street facade.



STOREFRONT INSTALLATION

140 EAST 63RD ST., NEW YORK, NEW YORK
AKA 817 LEXINGTON AVENUE

TITLE PAGE

STONEHILL TAYLOR



STOREFRONT INSTALLATION
140 EAST 63RD ST., NEW YORK, NEW YORK
AKA 817 LEXINGTON AVENUE

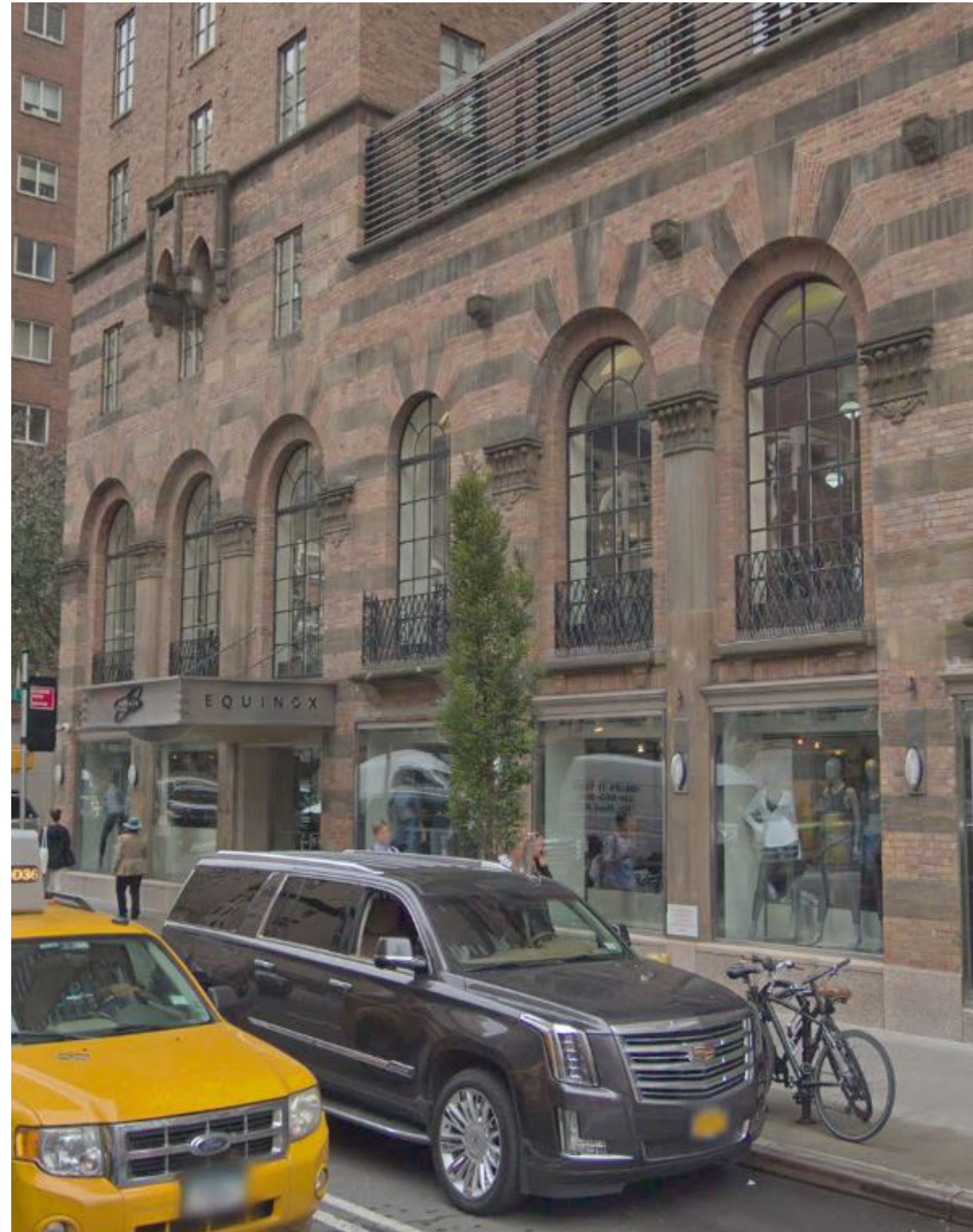
HISTORIC PHOTOGRAPHS



STOREFRONT INSTALLATION
140 EAST 63RD ST., NEW YORK, NEW YORK
AKA 817 LEXINGTON AVENUE

HISTORIC PHOTOGRAPHS





VIEW FROM LEXINGTON AVE



VIEW FROM LEXINGTON AVE

STOREFRONT INSTALLATION

140 EAST 63RD ST., NEW YORK, NEW YORK
AKA 817 LEXINGTON AVENUE

PHOTO DOCUMENTATION



ADJACENT BUILDING FROM LEXINGTON AVE



ADJACENT BUILDING FROM LEXINGTON AVE

STOREFRONT INSTALLATION

140 EAST 63RD ST., NEW YORK, NEW YORK
AKA 817 LEXINGTON AVENUE

PHOTO DOCUMENTATION



VIEW FROM 63RD ST.



VIEW FROM INTERSECTION OF LEXINGTON AVE AND 63RD ST.

STOREFRONT INSTALLATION

140 EAST 63RD ST., NEW YORK, NEW YORK
AKA 817 LEXINGTON AVENUE

PHOTO DOCUMENTATION

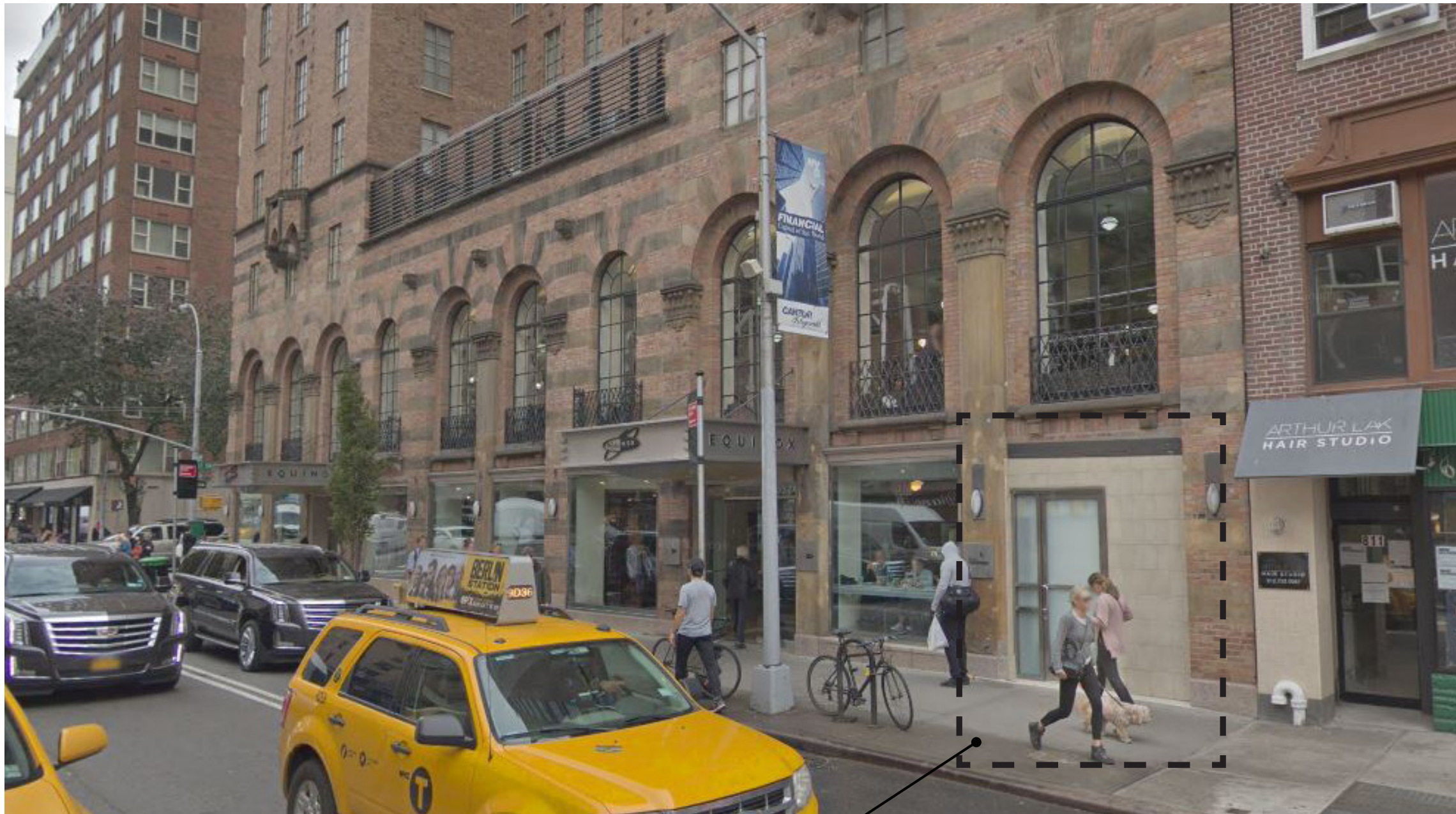


ADJACENT BUILDING FROM 63RD ST.

STOREFRONT INSTALLATION

140 EAST 63RD ST., NEW YORK, NEW YORK
AKA 817 LEXINGTON AVENUE

PHOTO DOCUMENTATION



SCOPE OF WORK INCLUDES:

Removal of existing CMU wall and overhead moulding and replace with new storefront glazing infill to match existing ground floor storefront system, new moulding and curb to match existing conditions.

STOREFRONT INSTALLATION

140 EAST 63RD ST., NEW YORK, NEW YORK
AKA 817 LEXINGTON AVENUE

PHOTO DOCUMENTATION



New signage on existing canopy

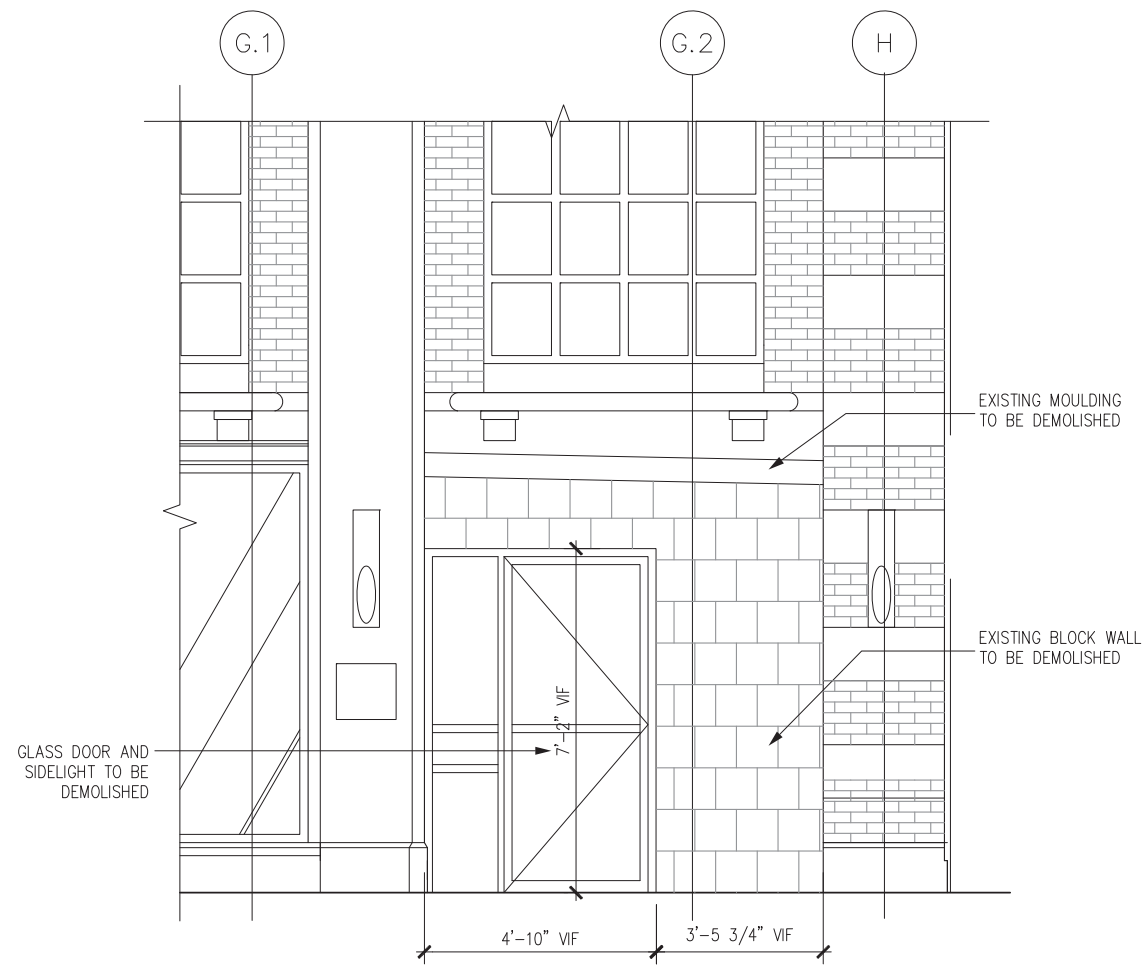
New signage on existing canopy

3
605

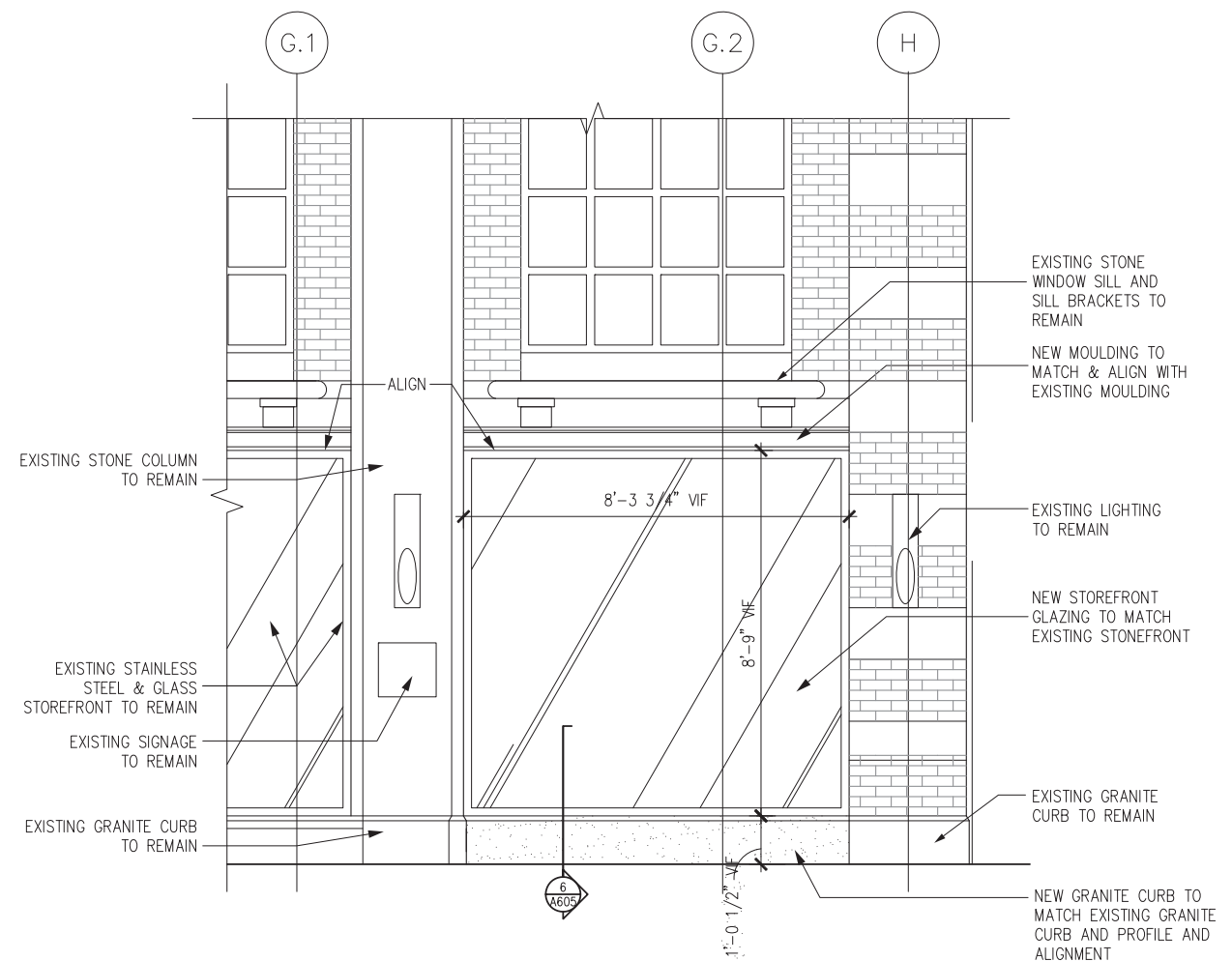
7 PROPOSED
LEXINGTON AVENUE ELEVATION
SCALE: 1/8" = 1'0"

STOREFRONT INSTALLATION
140 EAST 63RD ST., NEW YORK, NEW YORK
AKA 817 LEXINGTON AVENUE

ELEVATIONS



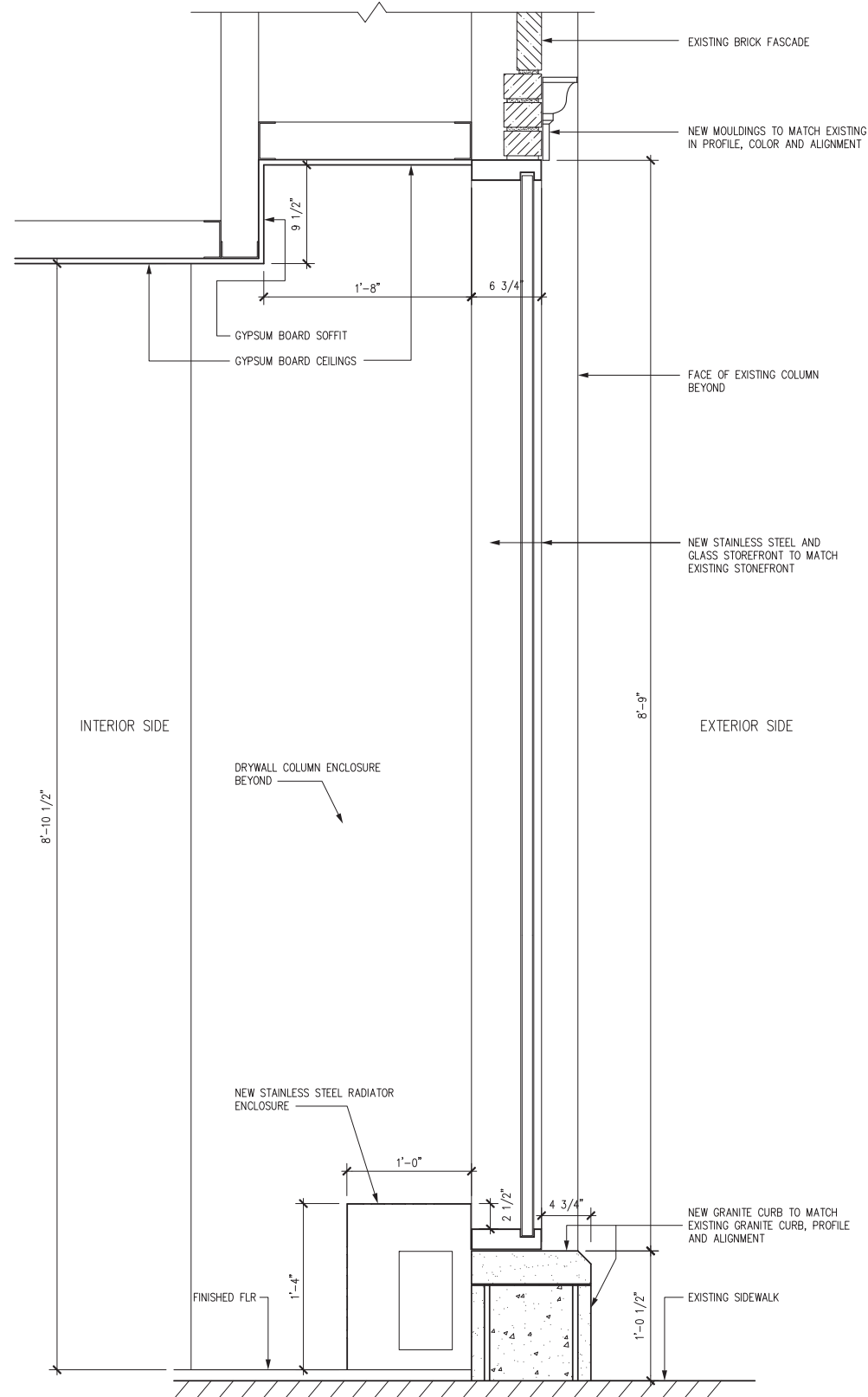
2 EXISTING
EXTERIOR ELEVATION
SCALE: 1/4" = 1'0"



3 PROPOSED
EXTERIOR ELEVATION
SCALE: 1/4" = 1'0"

STOREFRONT INSTALLATION
140 EAST 63RD ST., NEW YORK, NEW YORK
AKA 817 LEXINGTON AVENUE

ELEVATIONS

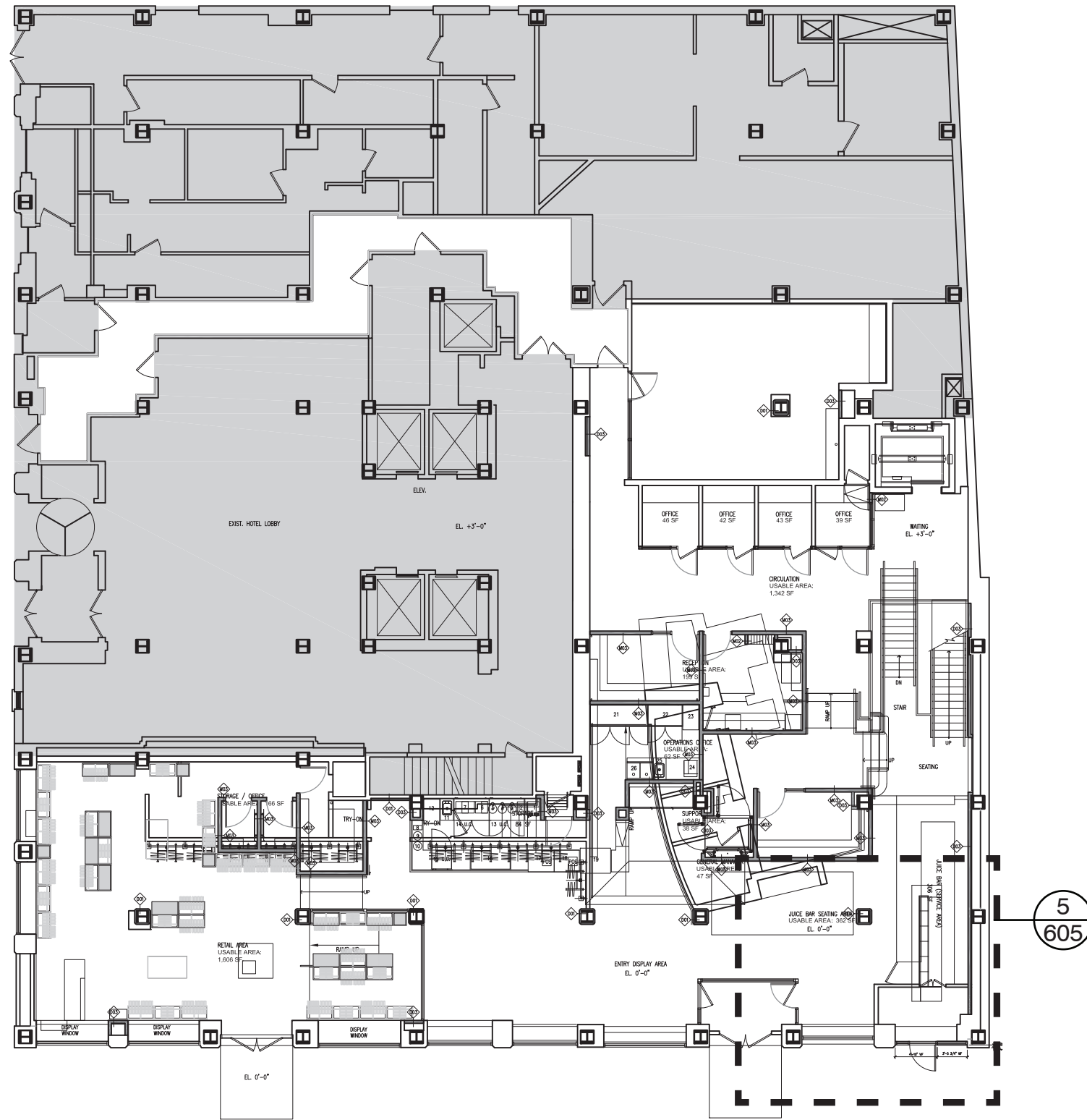


6 SECTION
 SCALE : 3/4" = 1'0"

STOREFRONT INSTALLATION

140 EAST 63RD ST., NEW YORK, NEW YORK
 AKA 817 LEXINGTON AVENUE

SECTION DETAILS

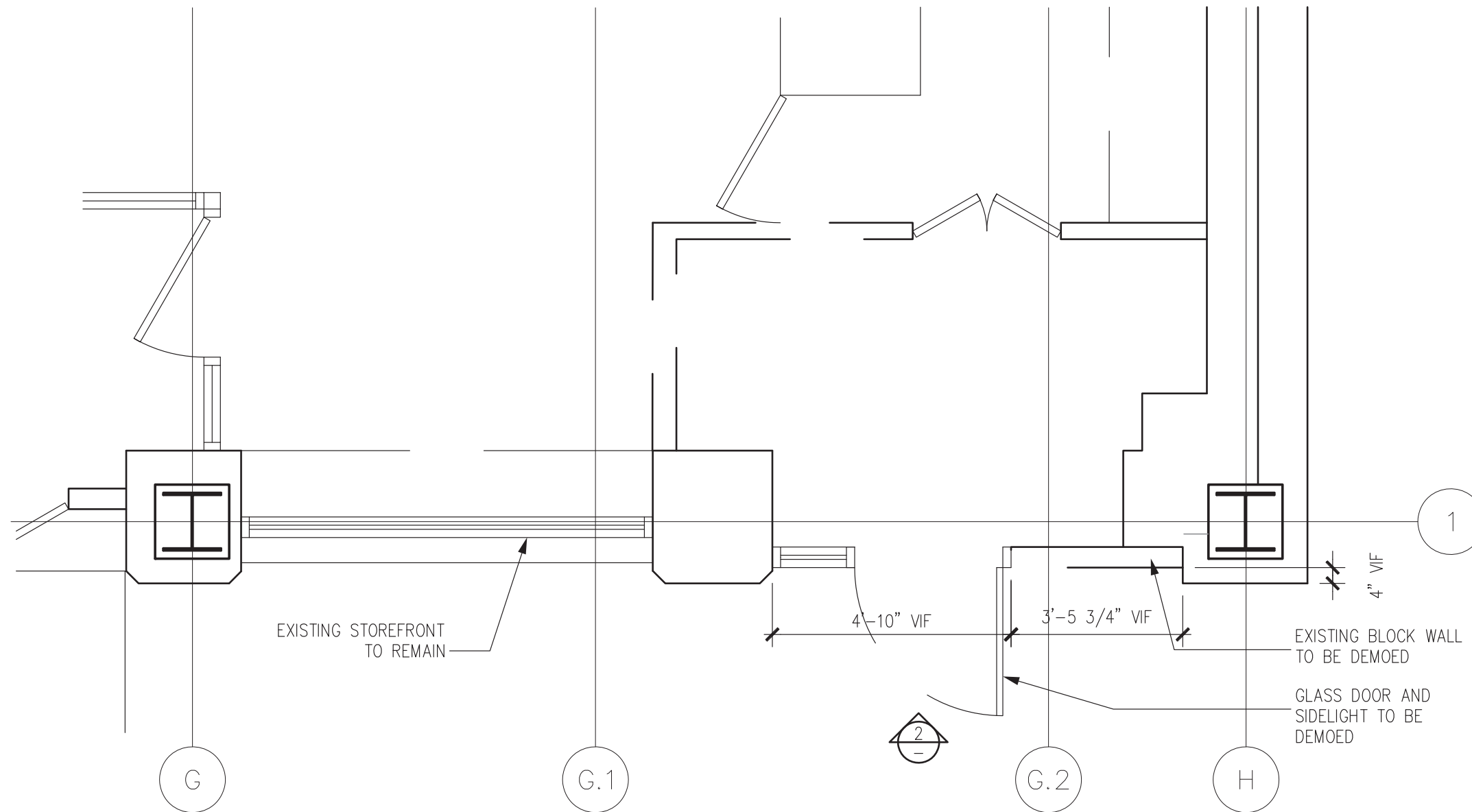


8 EXISTING FLOOR PLAN
SCALE: 1/16" = 1'-0"

STOREFRONT INSTALLATION

140 EAST 63RD ST., NEW YORK, NEW YORK
AKA 817 LEXINGTON AVENUE

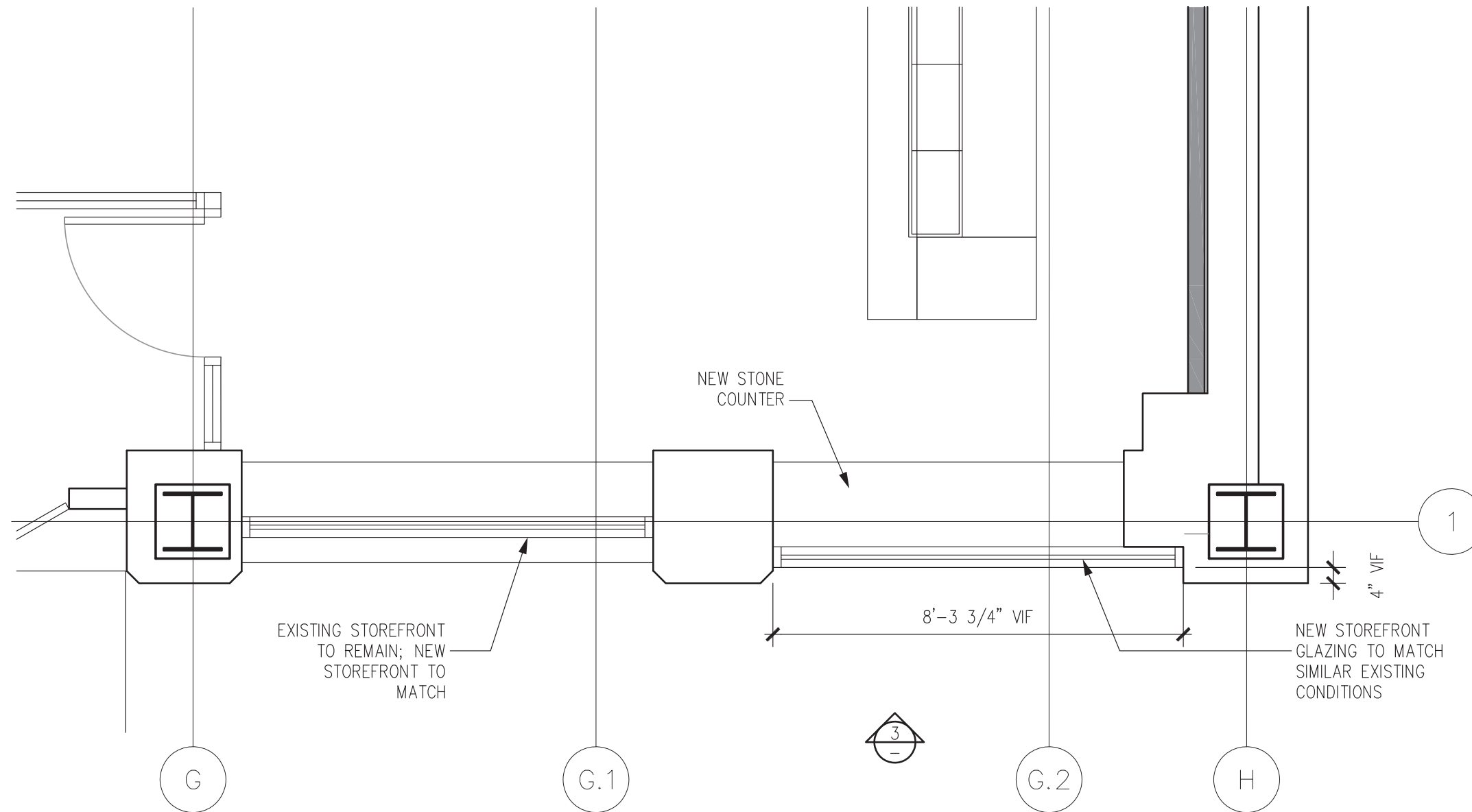
FLOOR PLAN & SITE



4 FIRST FLOOR
 EXISTING ENLARGED PLAN
 SCALE: 1/2" = 1'0"

STOREFRONT INSTALLATION
 140 EAST 63RD ST., NEW YORK, NEW YORK
 AKA 817 LEXINGTON AVENUE

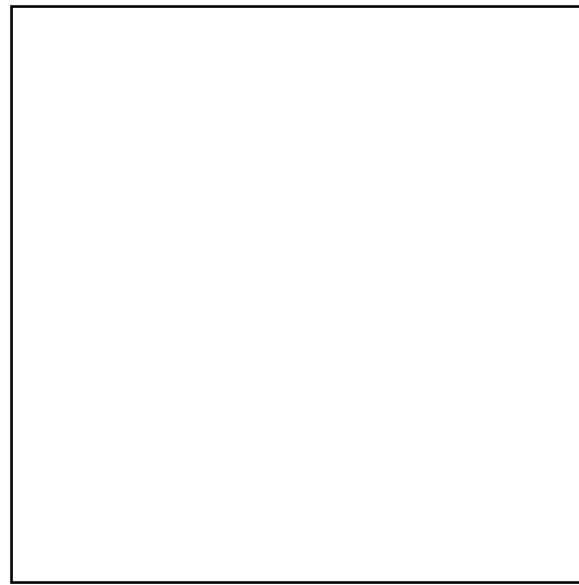
PARTIAL DEMOLITION PLAN



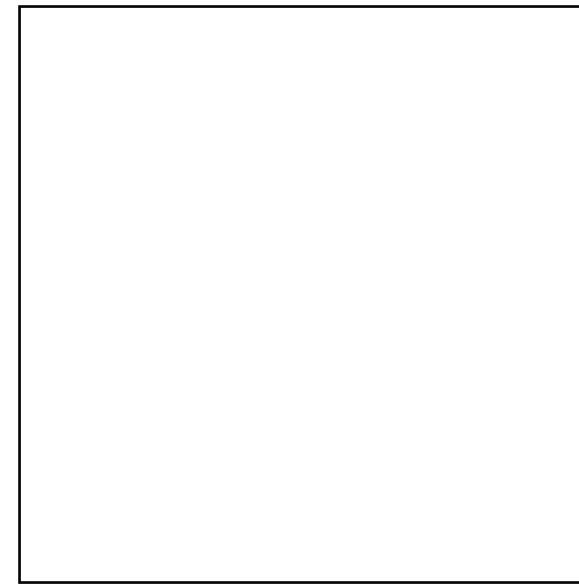
5 FIRST FLOOR
 PROPOSED ENLARGED PLAN
 SCALE: 1/2" = 1'0"

STOREFRONT INSTALLATION
 140 EAST 63RD ST., NEW YORK, NEW YORK
 AKA 817 LEXINGTON AVENUE

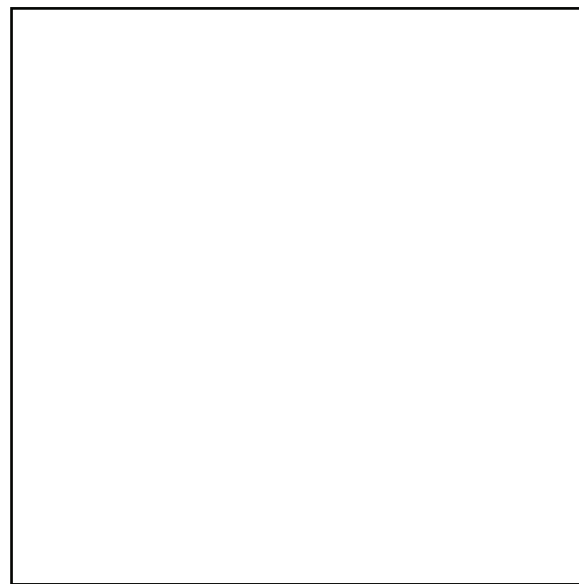
PARTIAL DEMOLITION PLAN



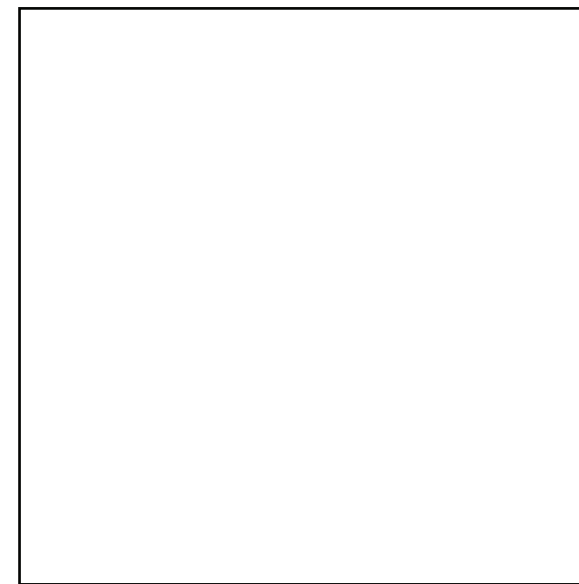
MATERIAL TBD



MATERIAL TBD



MATERIAL TBD



MATERIAL TBD

STOREFRONT INSTALLATION

140 EAST 63RD ST., NEW YORK, NEW YORK
AKA 817 LEXINGTON AVENUE

MATERIAL SELECTIONS