



Parks

John Jay Park

Located on FDR Drive between East 76th and 78th Streets,
in the Borough of Manhattan.

Community Board 8 Meeting
January 10, 2019
Tyler Parlato, NYC Parks

Total Budget: \$650K
City Council District 5, Ben Kallos - \$650K FY16,18, and 19

Project Size: 0.35 ac



MANHATTAN

1000'



UPPER EAST SIDE

500'



JOHN JAY PARK

50'




NYC Parks

John Jay Park | Project Location




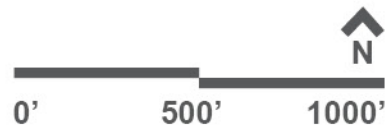
Flood Hazard Zones

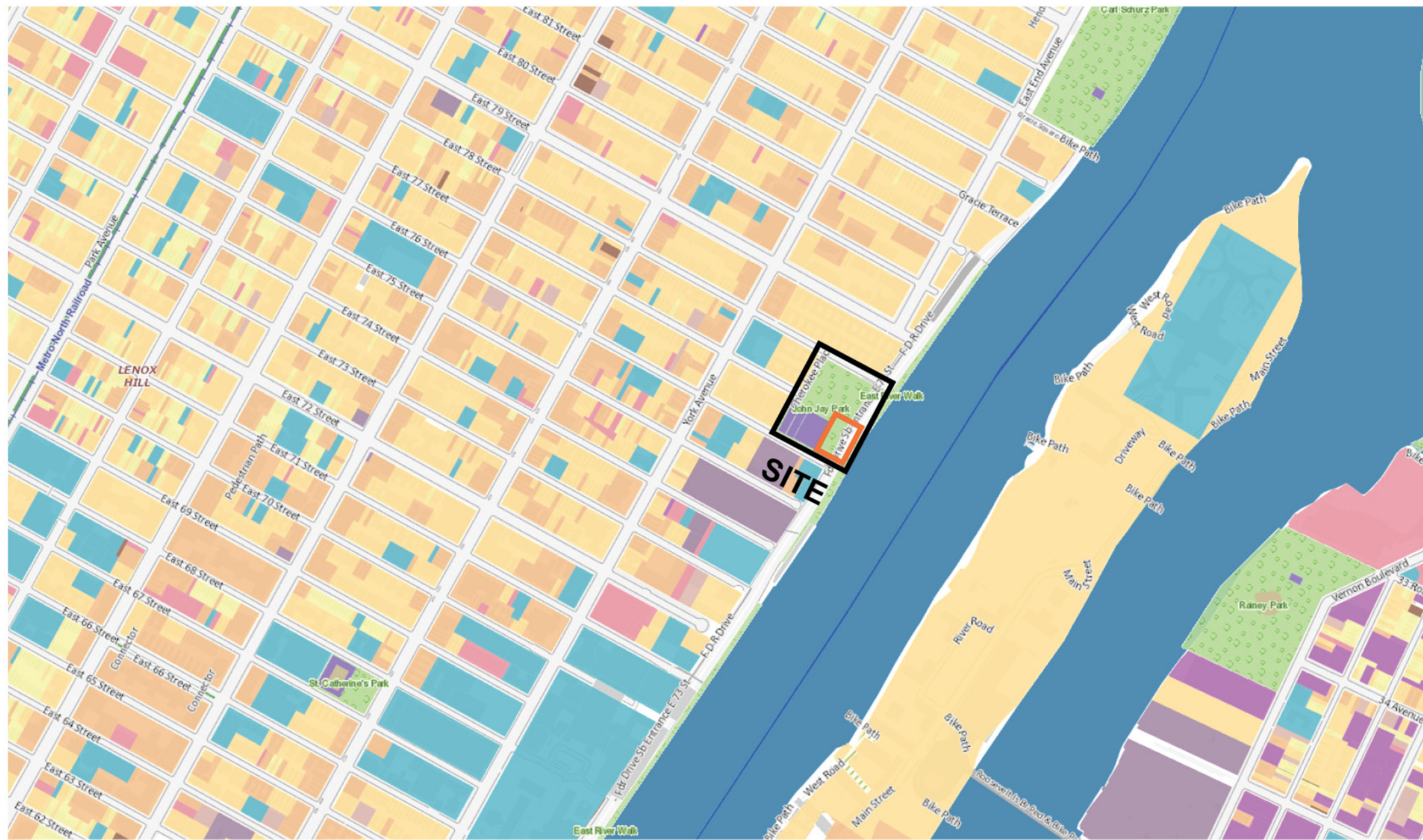
2015 Preliminary 100-year Floodplain

 1% Annual Chance Floodplain (100 Year Floodplain) The area that has a 1% chance of flooding in any given year.

2050s Projected 100-year Floodplain

 The potential areas that could be impacted by the 100-Year flood in the 2050s based on projections of the high-estimate 90th percentile sea level rise scenario (NYC Panel on Climate Change (NPCC) 2015 data).





All Land Use Categories

- 1 and 2 Family Residential
- Multi-family Residential
- Mixed Use
- Open space and outdoor recreation
- Commercial
- Institutional
- Industrial
- Parking
- Transportation/ Utilities
- Vacant Lots

NTS



John Jay Park | Surrounding Land Use



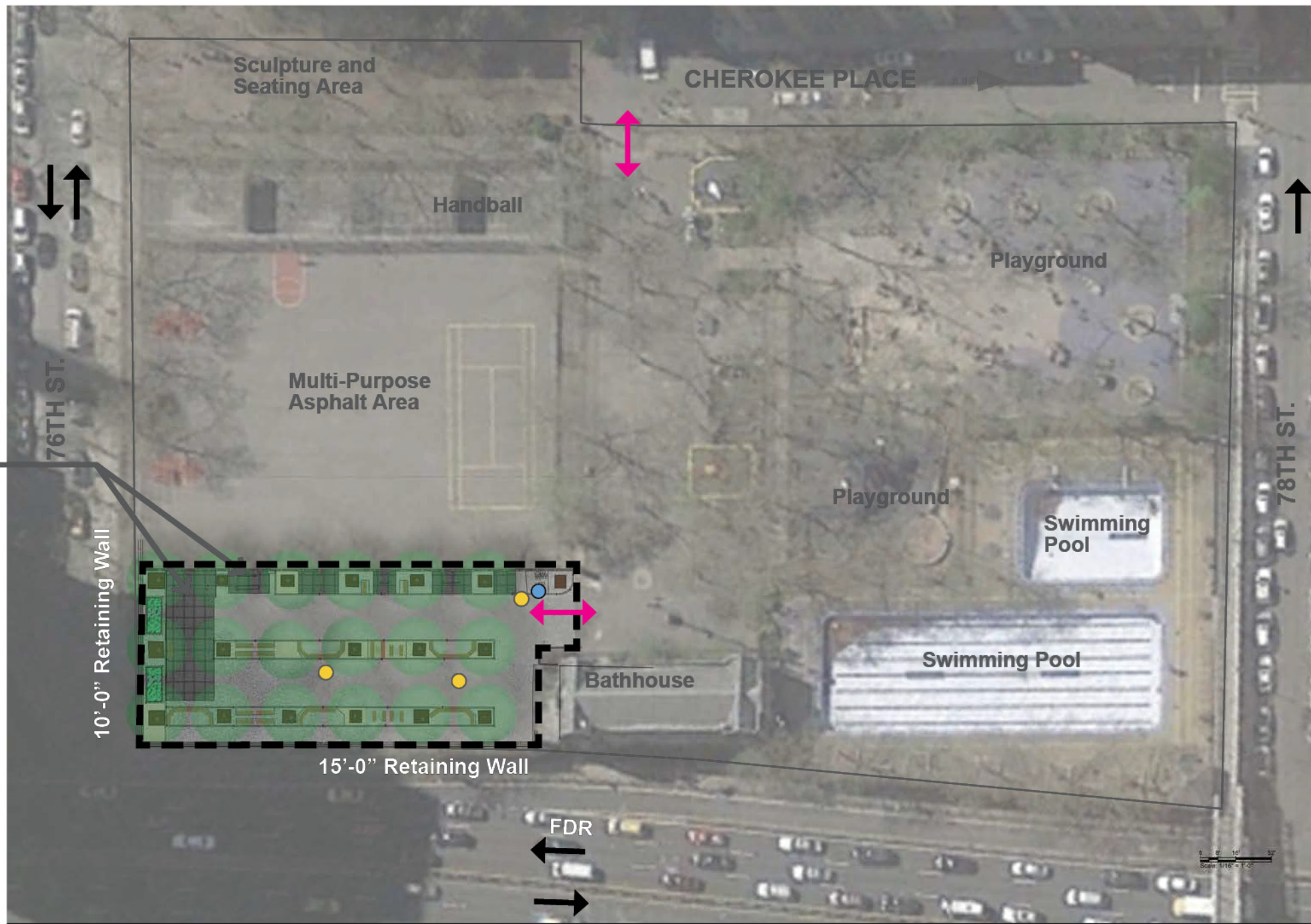
Carl Schurz Park
 Comfort Station
 Basketball
 Play Equipment
 Spray Shower
 Roller Hockey
 Dog Run

St. Catherine's Park
 Comfort Station
 Handball
 Tennis
 Basketball
 Play Equipment



John Jay Park | Neighborhood Context





Legend

-  Project Limit
-  Park Entrance
-  Tree
-  Parks Lightpole
-  Drinking Fountain
-  Traffic

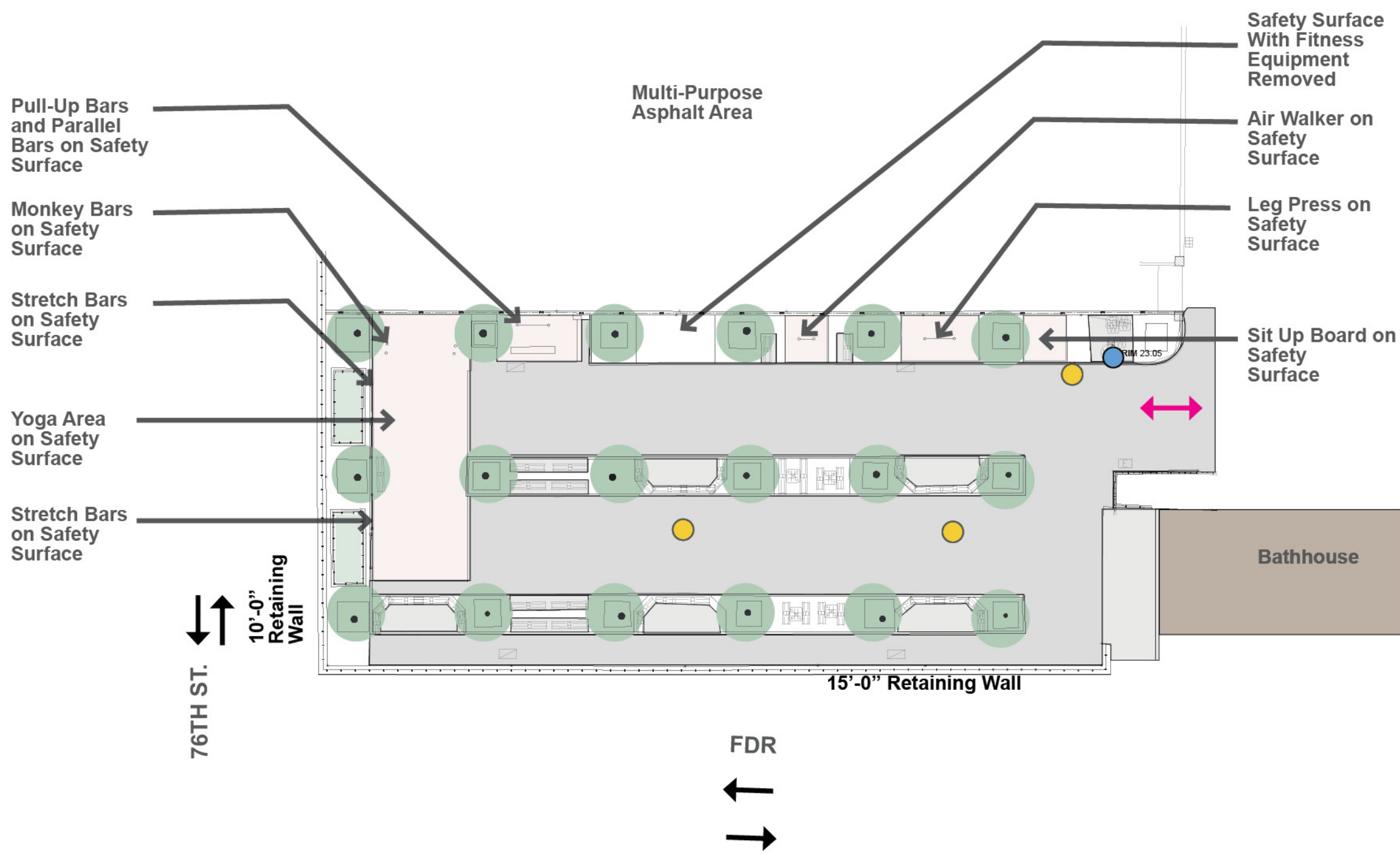
Fitness Units on Safety Surface

10'-0" Retaining Wall

15'-0" Retaining Wall

FDR

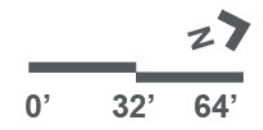











- ### Legend
- Project Limit
 - Park Entrance
 - Fitness Equipment
 - Building or Structure
 - Asphalt Pavement
 - Reinforced Concrete
 - Tree
 - Parks Lightpole
 - Drinking Fountain
 - Traffic
 - Type 'B' Benches

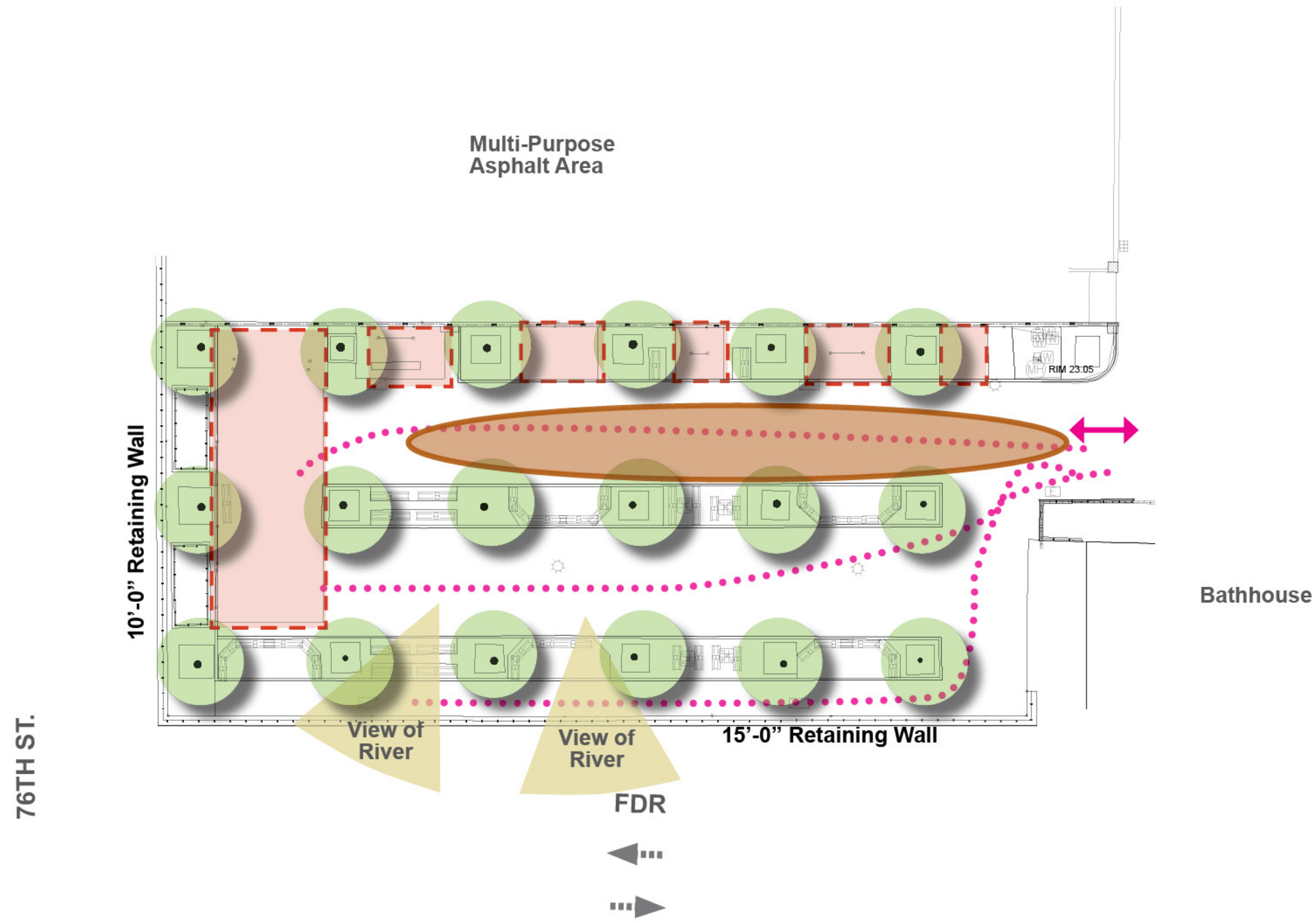


John Jay Park | Existing Conditions - Enlargement



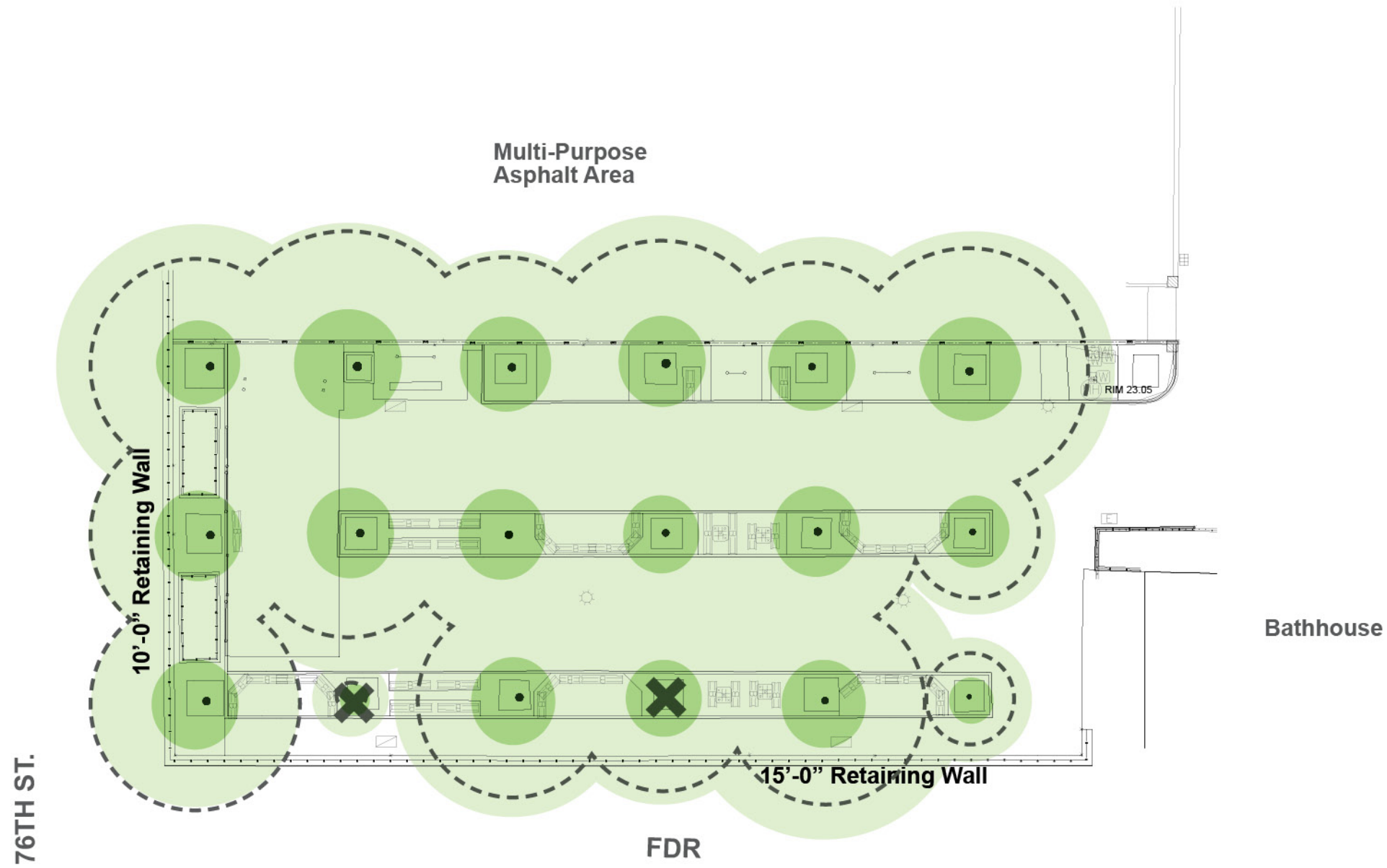
Legend

-  Project Limit
-  Park Entrance
-  Pedestrian Traffic
-  Heavy Vehicle Traffic
-  existing fitness equipment & safety surface
-  deteriorated asphalt
-  Tree Canopy/Shade

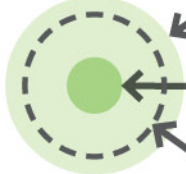






76TH ST.





Legend

-  Canopy
-  Structural Root Zone
-  Critical Root Zone
-  Stump Removal
-  Tree Removal due to poor condition

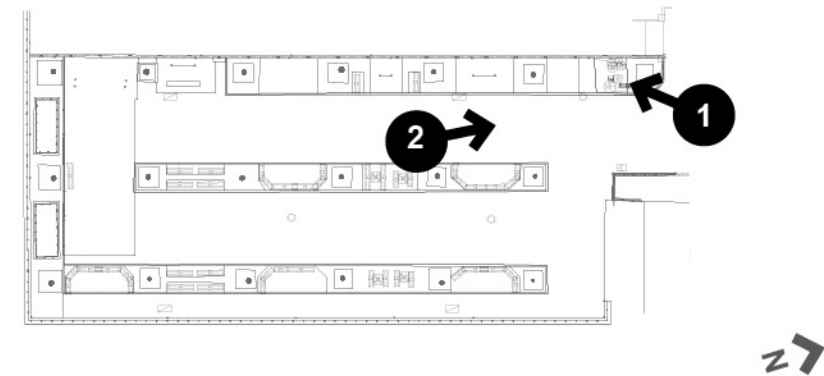


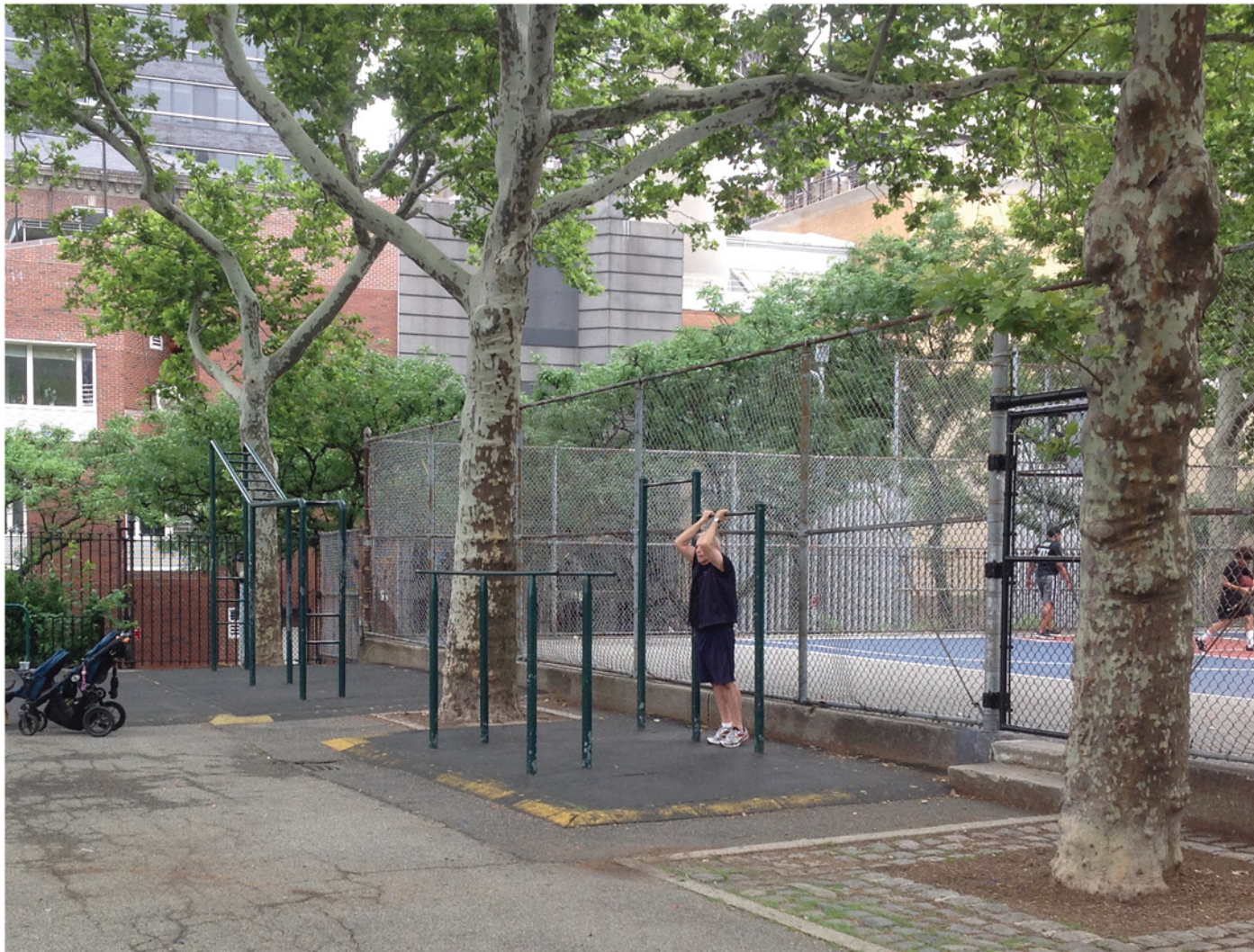


1 - View of Drinking Fountain looking South



2 - View of Entrance and Fitness Equipment looking North

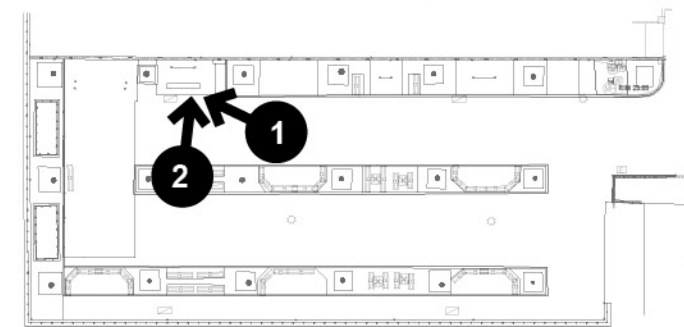




1 - View of Fitness Equipment looking South



2 - View of Entrance to MPPA looking West

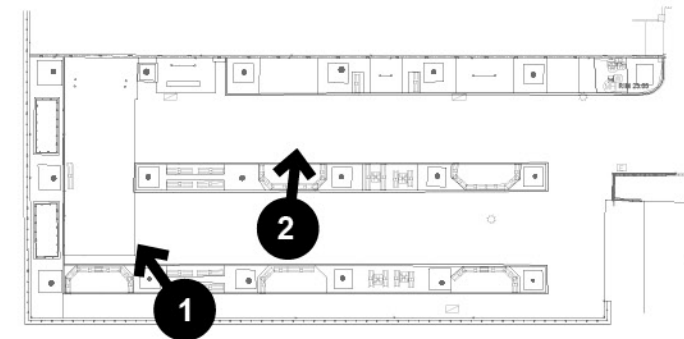




1 - View of Fitness Equipment and Yoga Area looking West



2 - View of Safety Surfacing with Fitness Equipment Removed



Existing Fitness Equipment and Safety Surfacing To Remain

76TH ST.

Existing Plant Beds Supplemented with New Plants

Remove Low Fence

Existing Trees to be protected, typ.

10'-0" Retaining Wall

Multi-Purpose Play Area

15'-0" Retaining Wall

FDR

BATHHOUSE

Existing D.F. Type 'F' Hi-Lo Reset for ADA Compliance

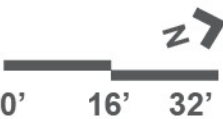
New Expanded Plant Beds

New Asphalt

New Type 'B' Benches on New Concrete Pavement, Typical

Existing Picnic Tables on ADA Granite Block Pavement

Existing Game Tables on ADA Granite Block Pavement

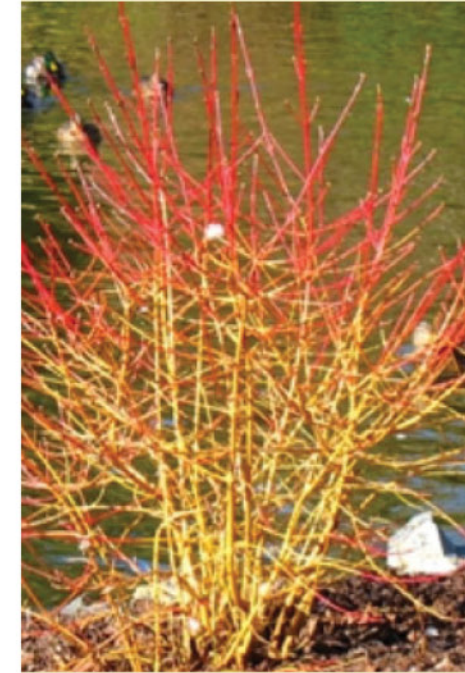


SMALL FLOWERING TREES



Cercis canadensis

MEDIUM / LARGE SHRUBS



Cornus sericea



Hydrangea quercifolia

GROUND COVERS



Liriope spicata



Asarum europaeum



Bench Type 'B'



Tree Protection

