

SANBORN MAP: 828 - 850 MADISON AVENUE, 10021, NEW YORK, NY
(DISTRICT: C5-1 BLOCK: 1384 LOT: 7502)



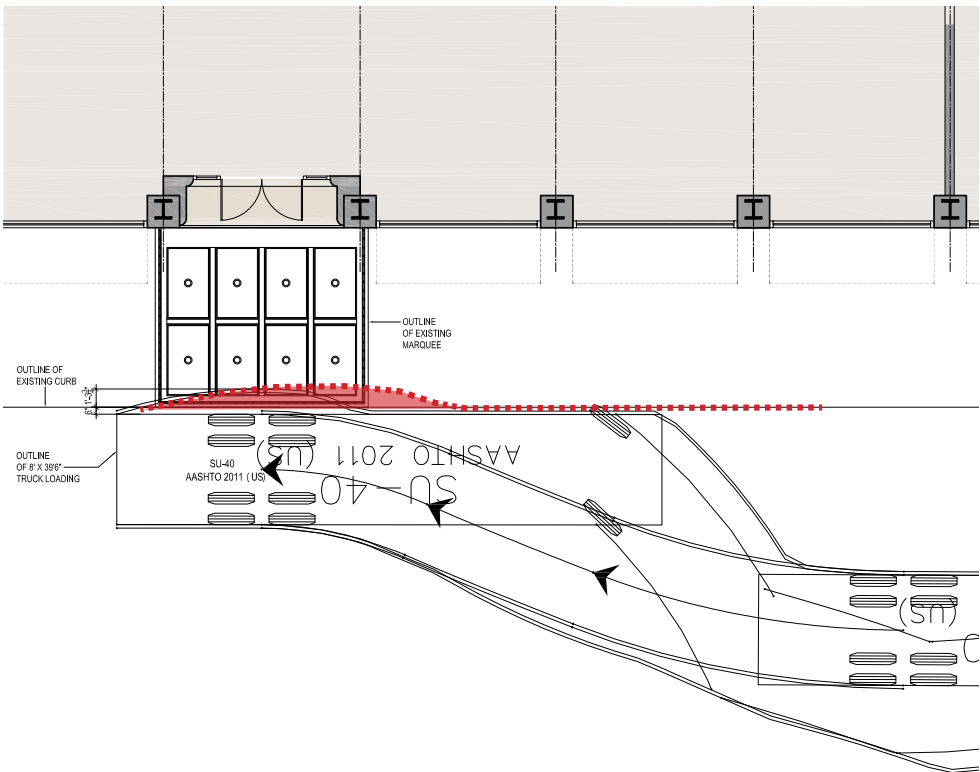
MADISON AVE. ELEVATION - TRUCK CONFLICT WITH EXISTING MARQUEE



DETAIL PHOTO: EXISTING DAMAGE TO MARQUEE ON MADISON AVE.



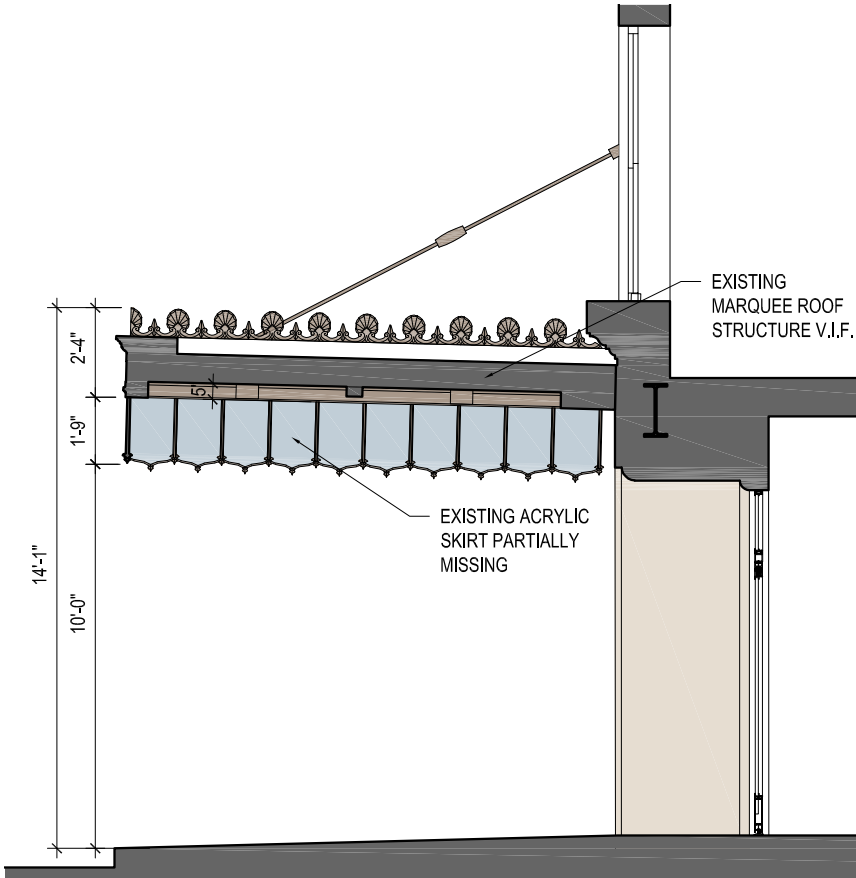
DETAIL PHOTOS: EXISTING DAMAGE TO MARQUEE ON MADISON AVE.



TRUCK CONFLICT WITH EXISTING MARQUEE (BACK-IN)



MARQUEE MADISON AVE ELEVATION - EXISTING



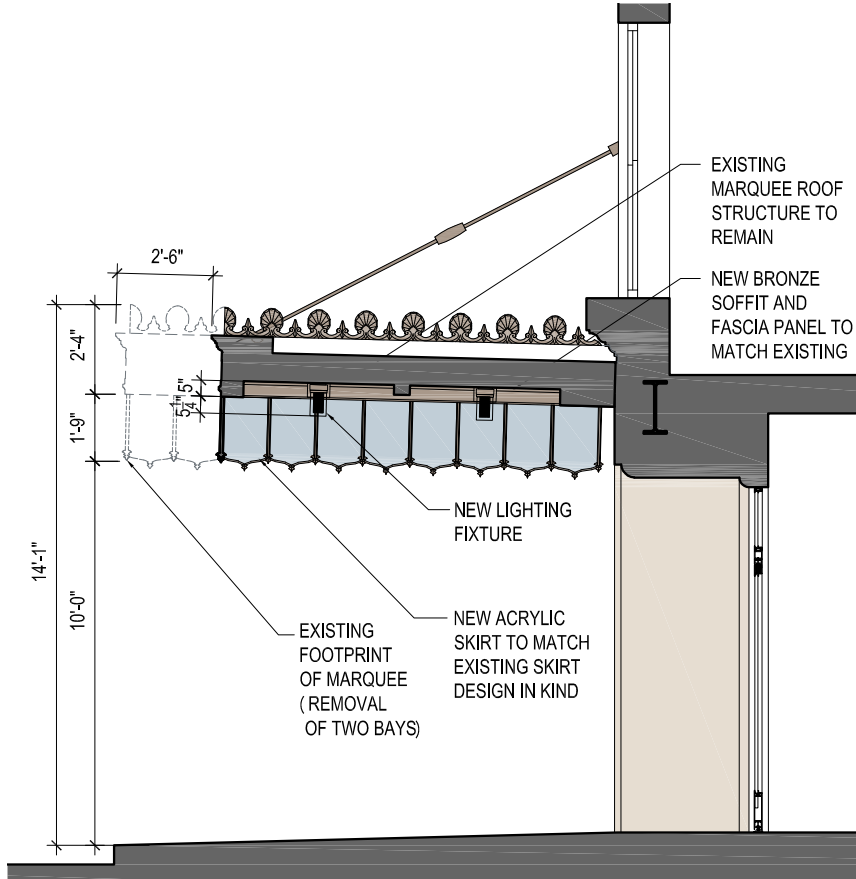
MARQUEE NORTH SECTION - EXISTING



VIEW FROM MADISON AVENUE - EXISTING MARQUEE



MARQUEE MADISON AVE ELEVATION - PROPOSED



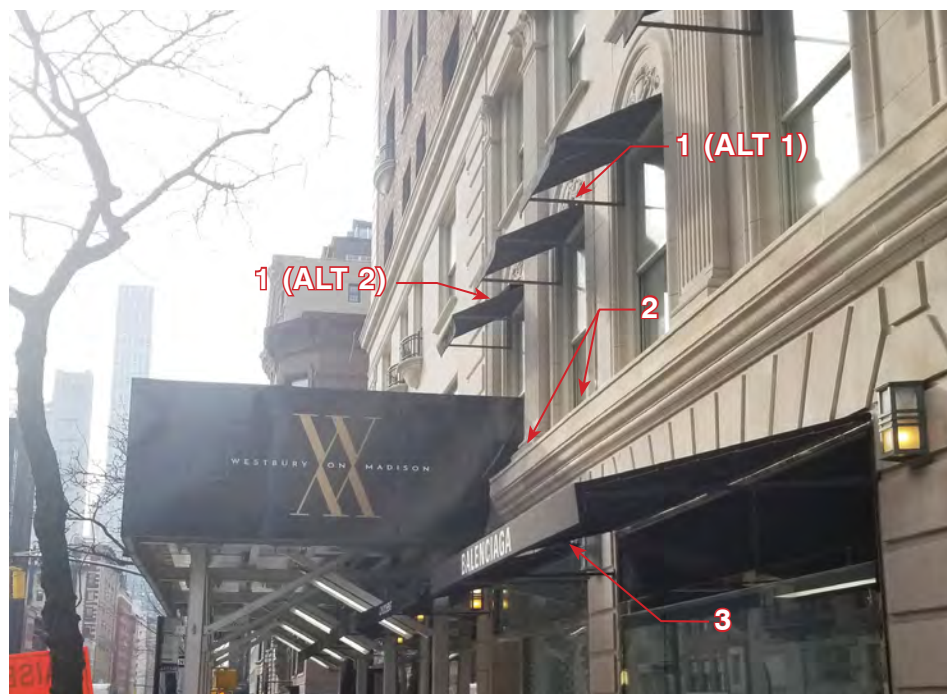
MARQUEE NORTH SECTION - PROPOSED



VIEW FROM MADISON AVENUE - PROPOSED MARQUEE

NIGHT LIGHTING RENDERING

- Surface mounted fixtures with glass trims at Entry Canopy
- Uplights at tree pits
- Small linear uplights over Levels 1 and 2 awnings
- New glowing wall sconces with downlight component along Level 1 facade
- Linear uplights between windows at Level 2



DETAIL MOCK-UP PHOTO:
TAKEN ON SIDEWALK OF MADISON AVENUE LOOKING SOUTH



1. LIGHTING FIXTURES ON LV2 AWNING (L2-1)
2. LIGHTING FIXTURES ON LV2 STONE SILL (LV2-1 & LV2)
3. LIGHTING FIXTURES ON L1 AWNING (LV2-1)

OVERALL MOCK-UP PHOTO:
TAKEN ACROSS FROM MADISON AVENUE LOOKING SOUTHWEST