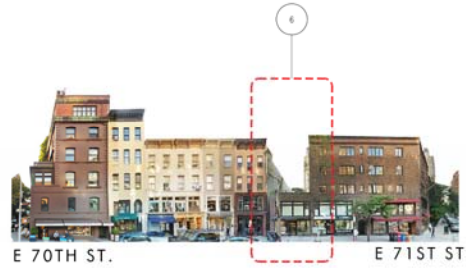


132 EAST 71ST STREET
NEW YORK, NY 10021

LPC COMMUNITY BOARD 8 HEARING
01.14.2019



6. VIEW OF PARTIAL SOUTH AND EAST FACADE FROM LEXINGTON AVENUE



5. STREETScape OF LEXINGTON AVENUE LOOKING WEST



4. STREETScape OF EAST 71ST STREET LOOKING SOUTH



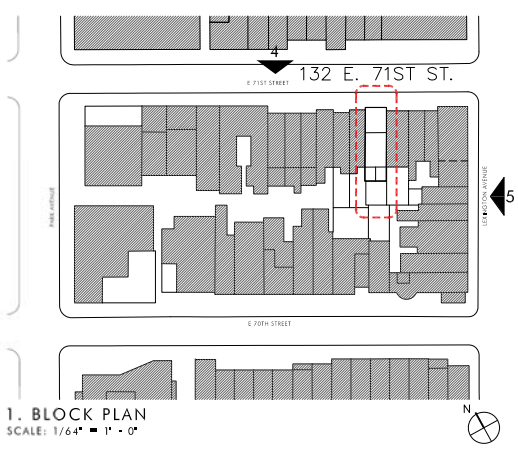
3. SANBORN MAP



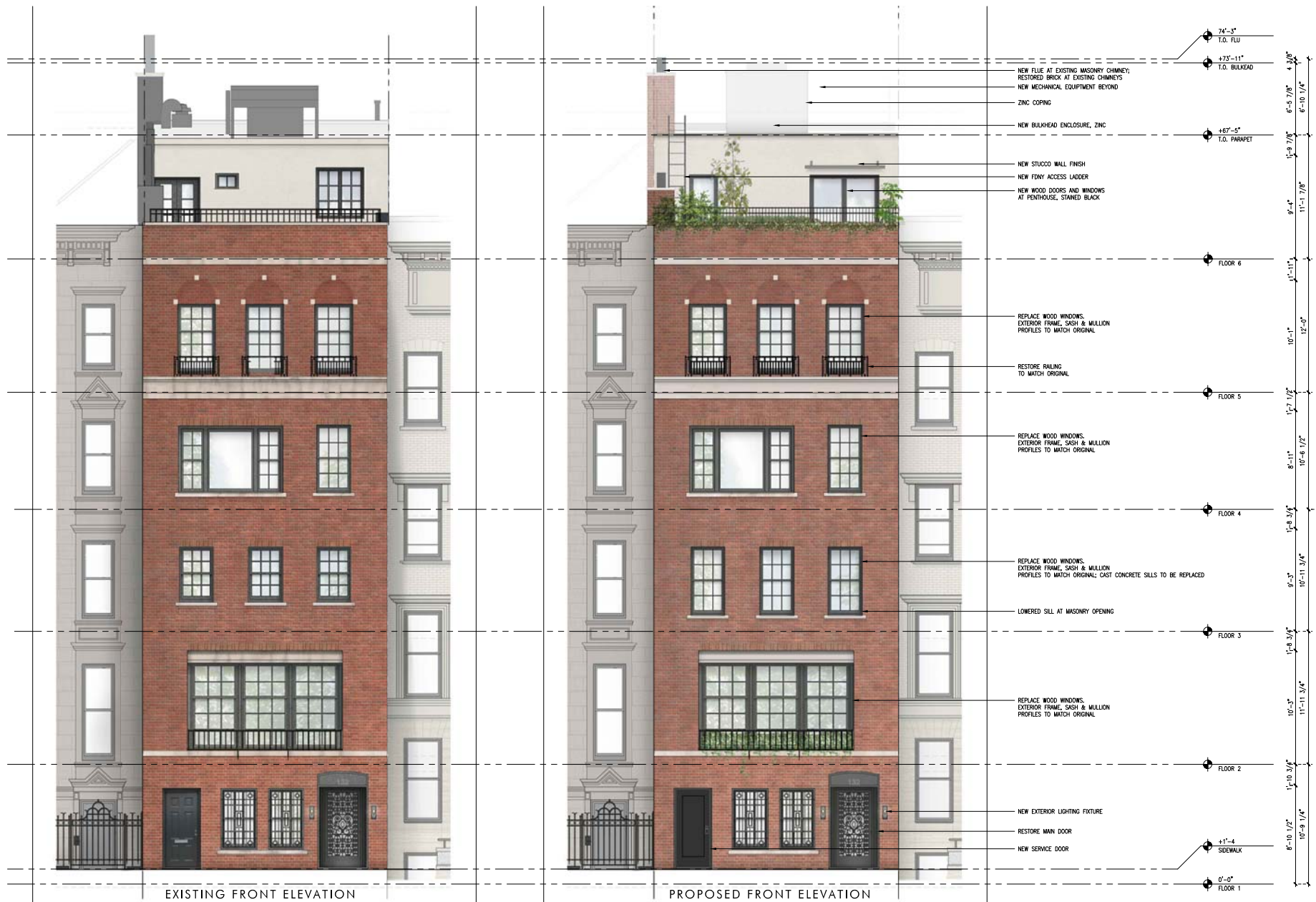
2. HISTORIC DISTRICT MAP

PROJECT INFO

132 EAST 71ST STREET
 NEW YORK, NY 10003
 BLOCK: 1405
 LOT: 60
 ZONING DISTRICT: R9-X, R8-B
 ZONING MAP: 8C
 LOT FRONTAGE: 22'
 LOT DEPTH: 100' x 5'



1. BLOCK PLAN
 SCALE: 1/64" = 1' - 0"



SELLDORF ARCHITECTS
 650 BROADWAY NEW YORK NY 10003
 212.219.9577

EXISTING AND PROPOSED FRONT ELEVATION

COMMUNITY BOARD 8 HEARING - 132 EAST 71ST STREET
 NEW YORK, NY
 (22x34) SCALE 1/4" = 1'-0"
 (11x17) SCALE 1/8" = 1'-0"

