



Andrew Haswell Green Park  
Phase 3

# Conceptual Plan Kick-Off



Andrew Haswell Green Park – Phase 3

# Existing Conditions

Existing  
Conditions



Existing  
Conditions

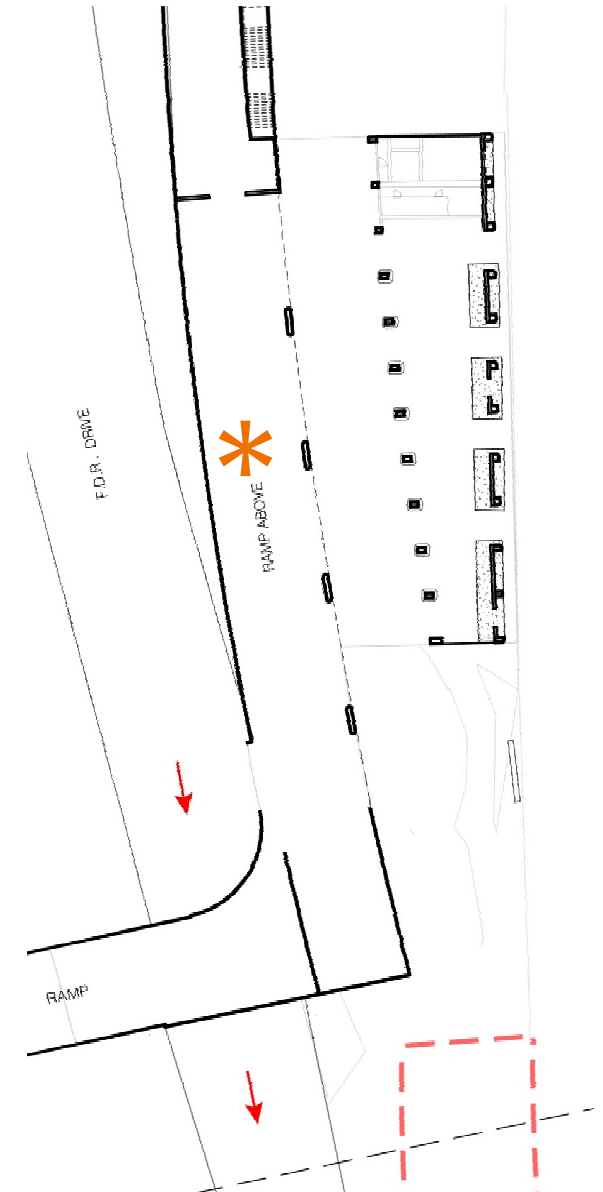




Existing  
Conditions

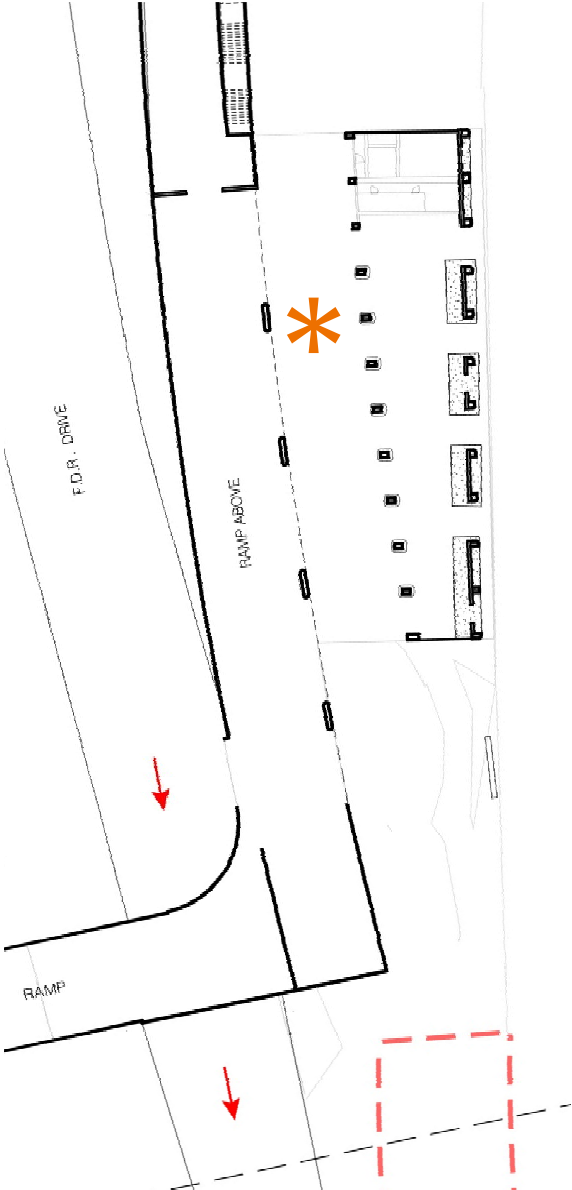
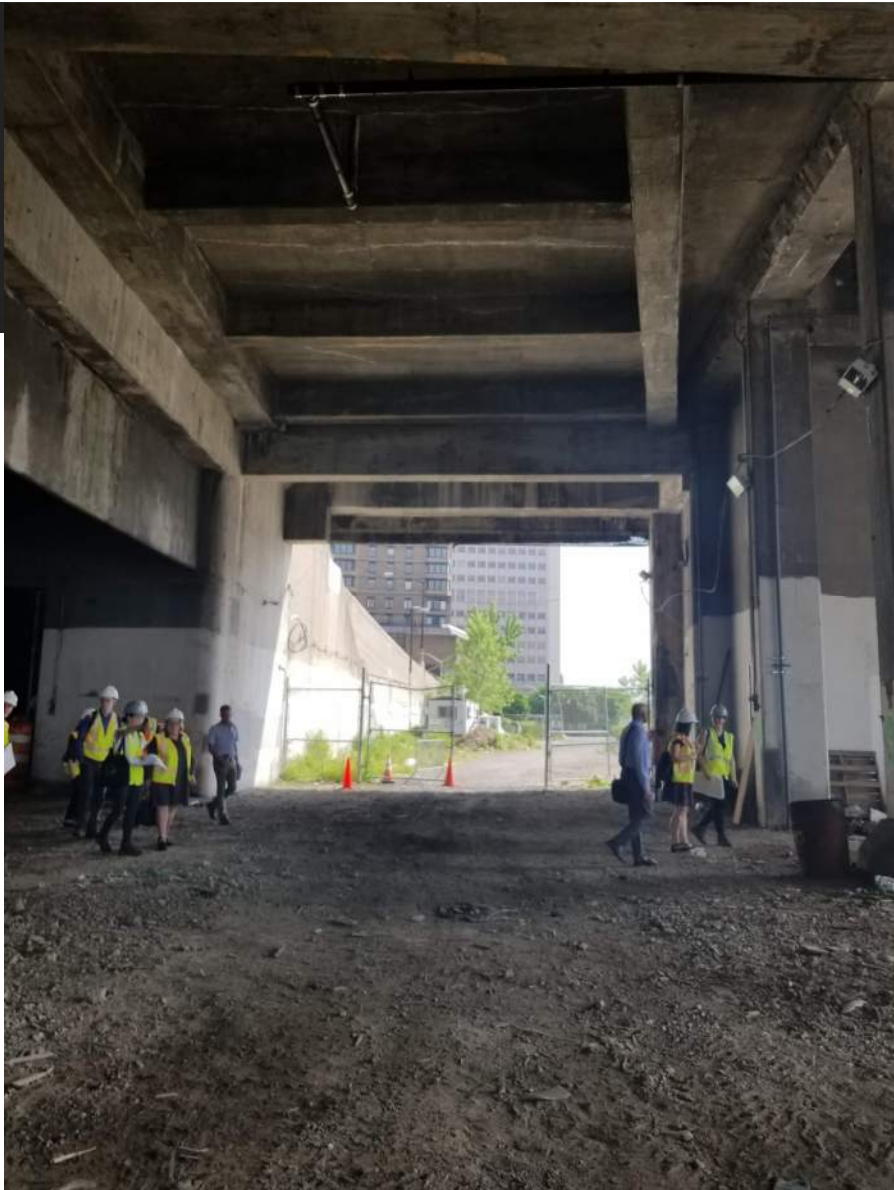


Existing  
Conditions

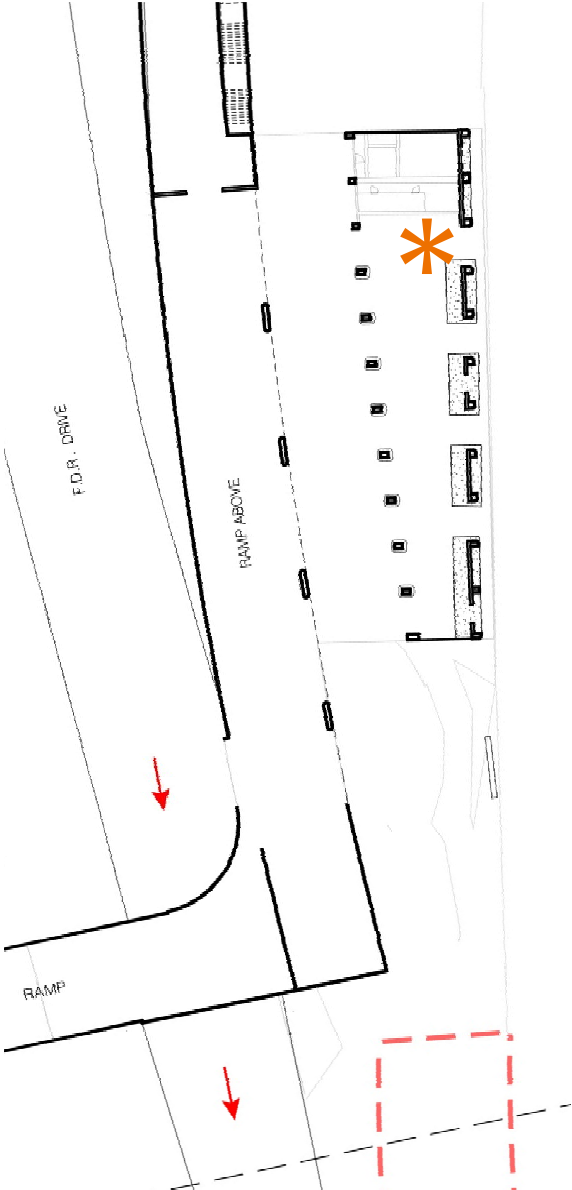




Existing  
Conditions

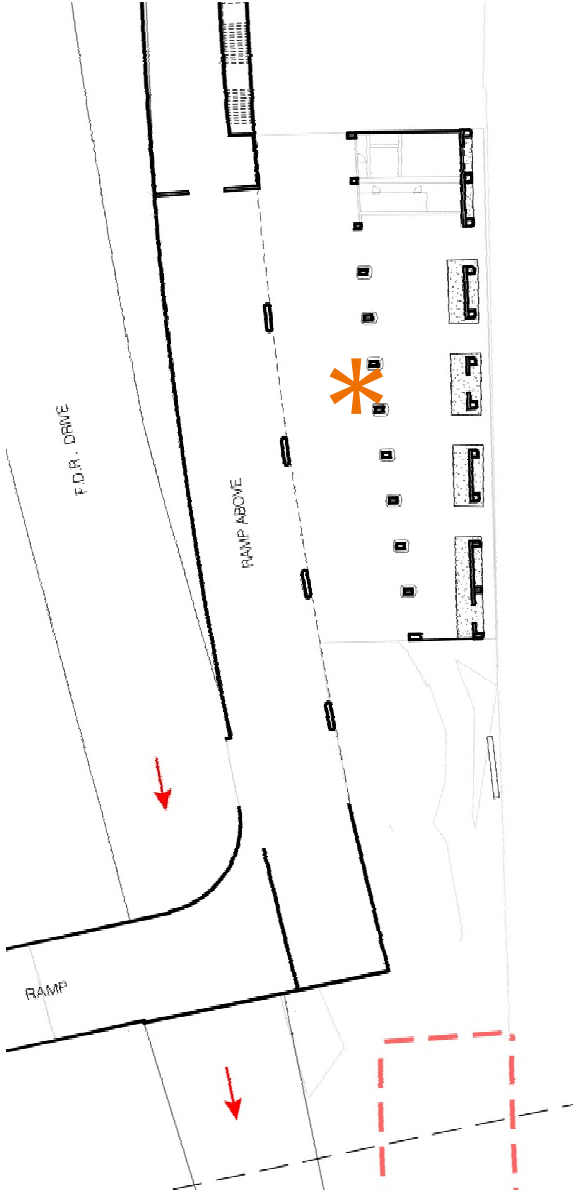


Existing  
Conditions

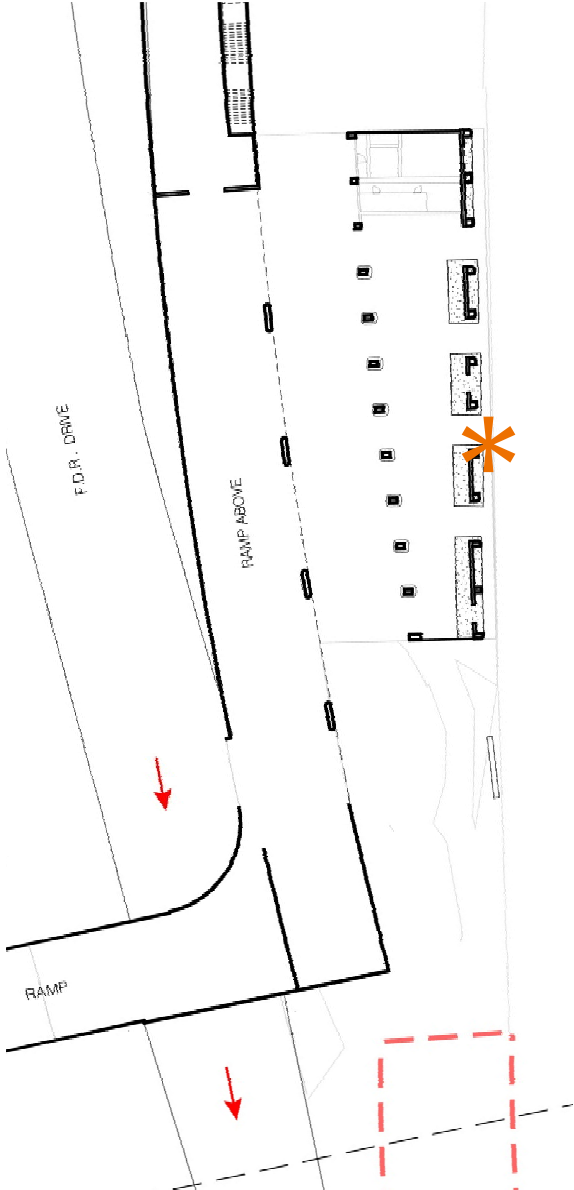




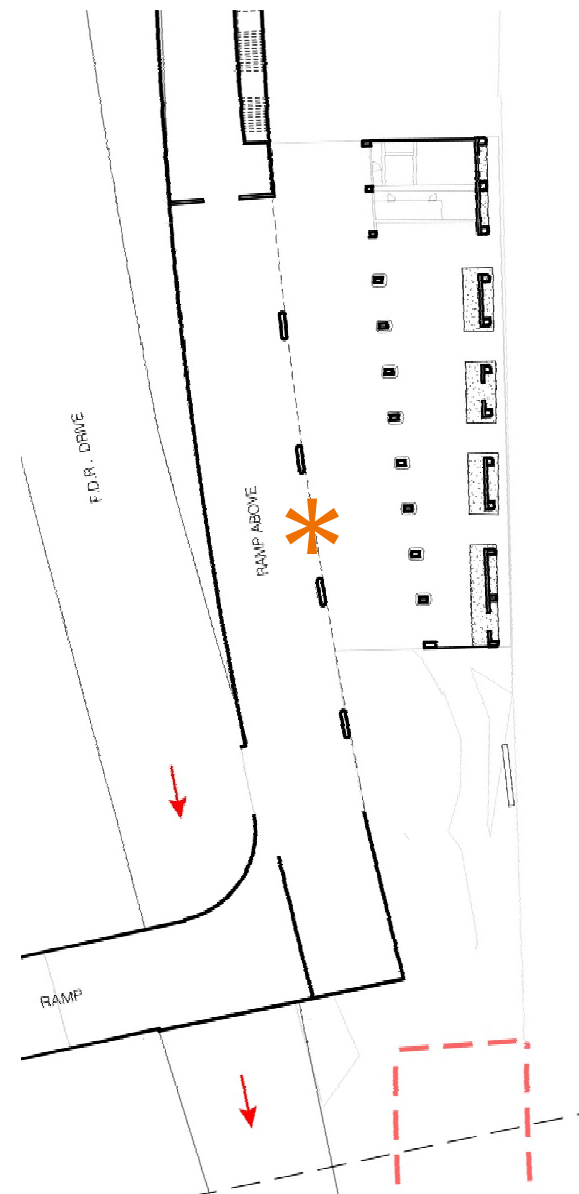
Existing  
Conditions



Existing  
Conditions

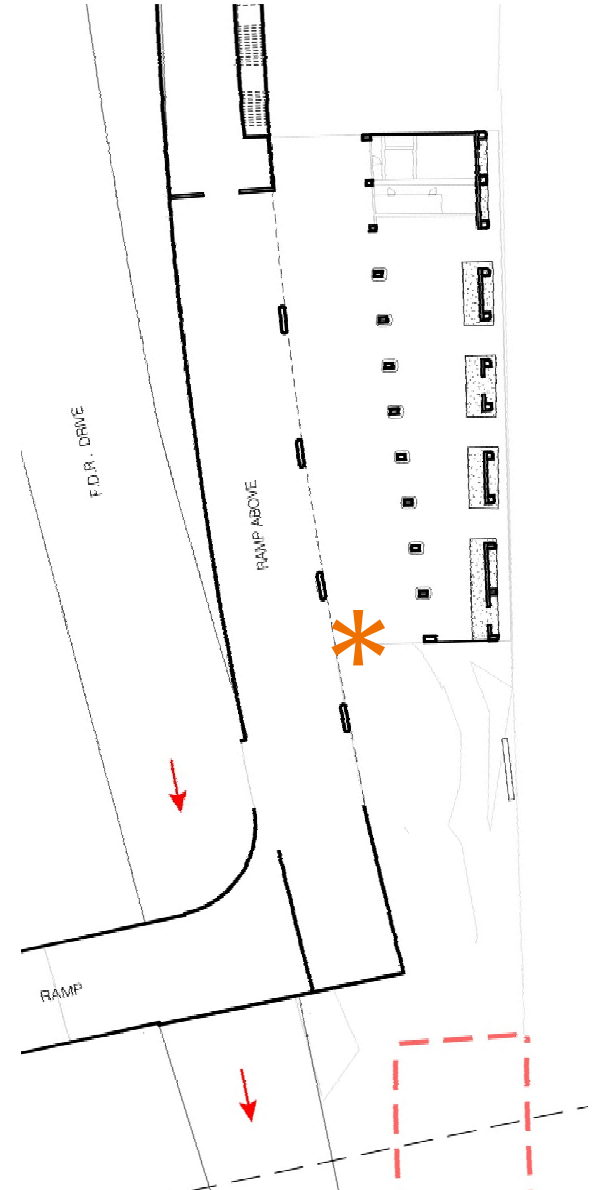


Existing  
Conditions

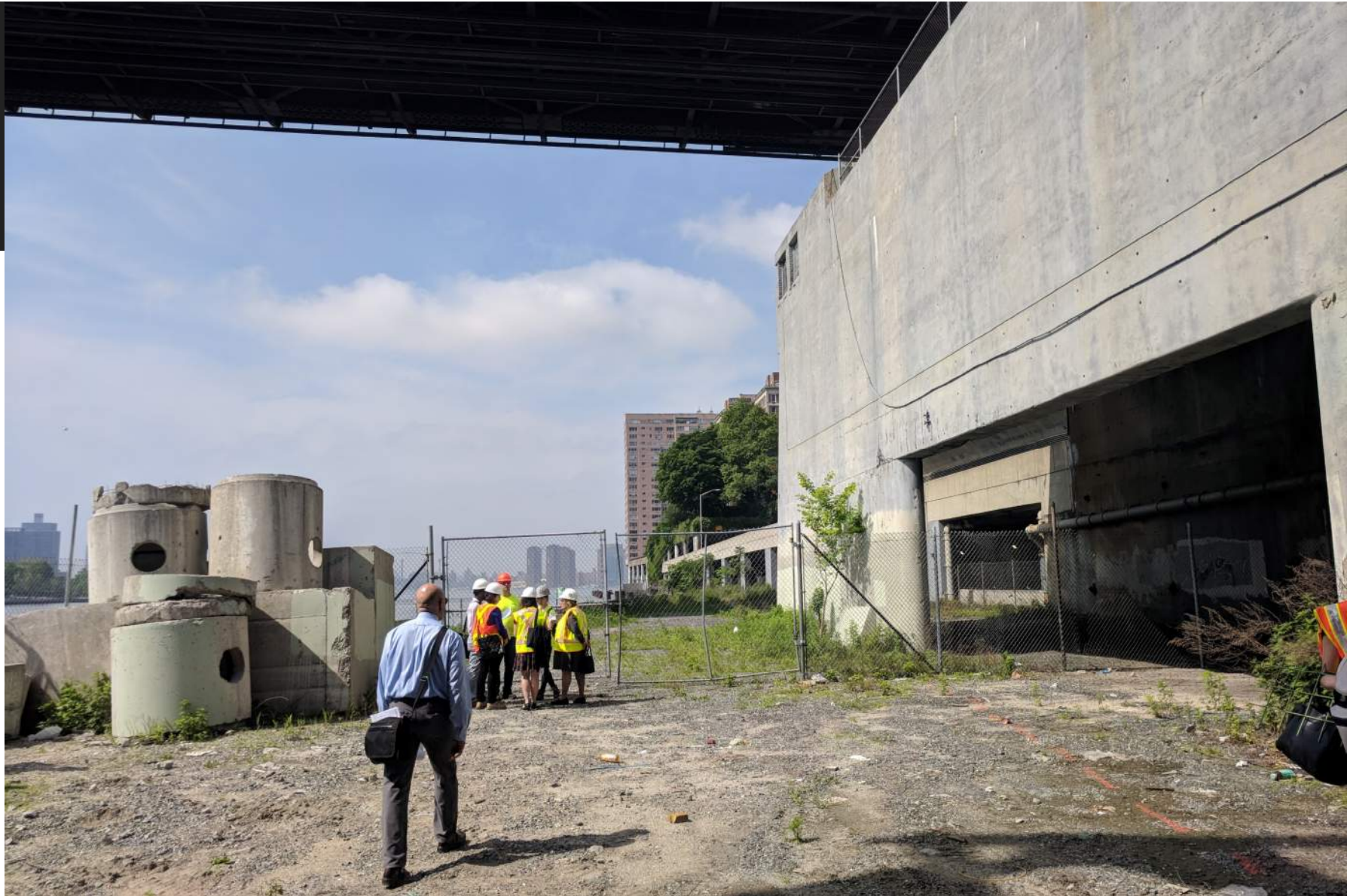




## Existing Conditions

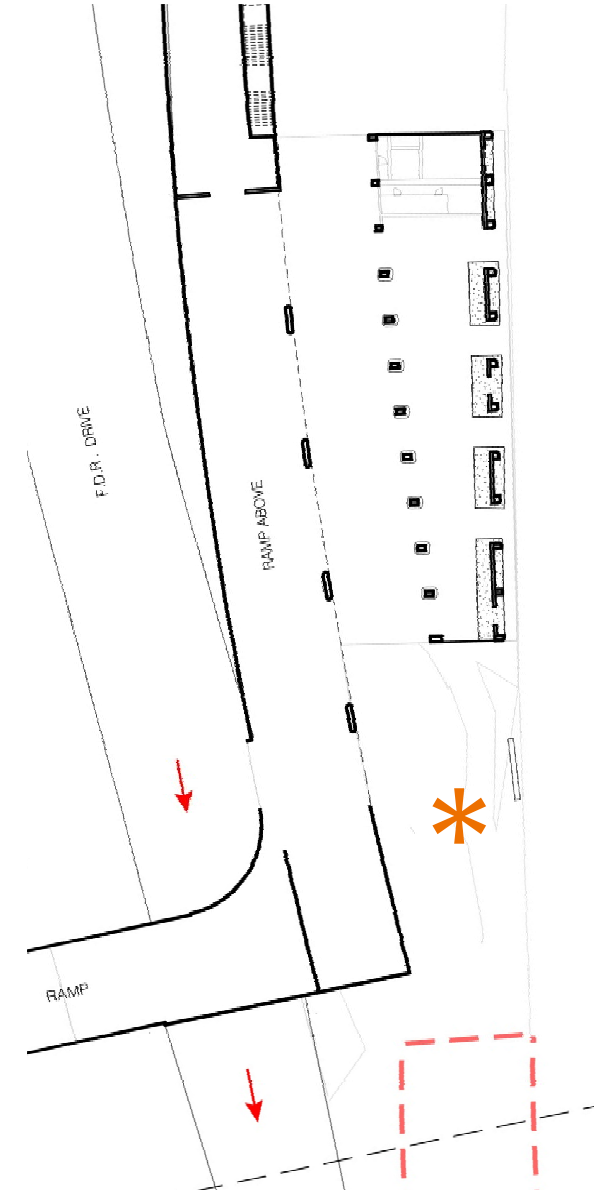


Existing  
Conditions





## Existing Conditions





Existing  
Conditions





Existing  
Conditions





Existing  
Conditions





Existing  
Conditions

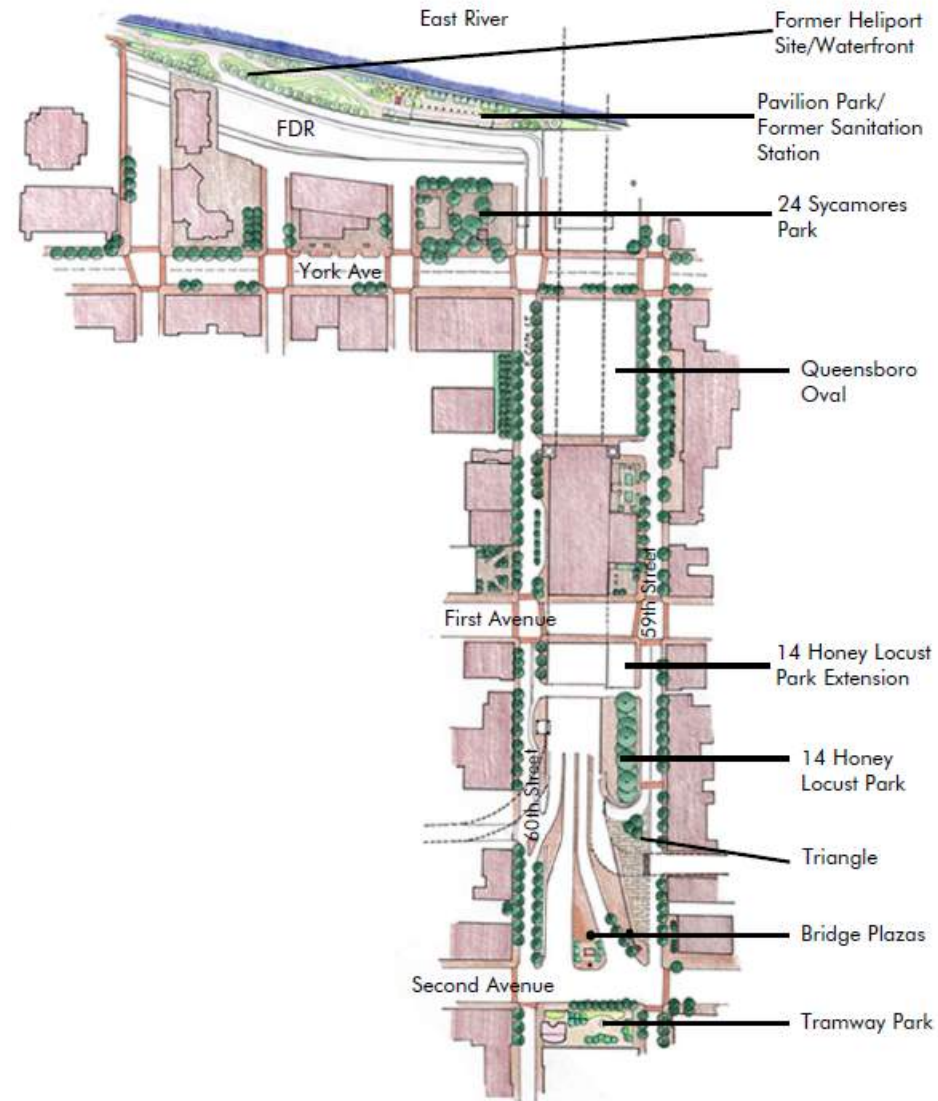
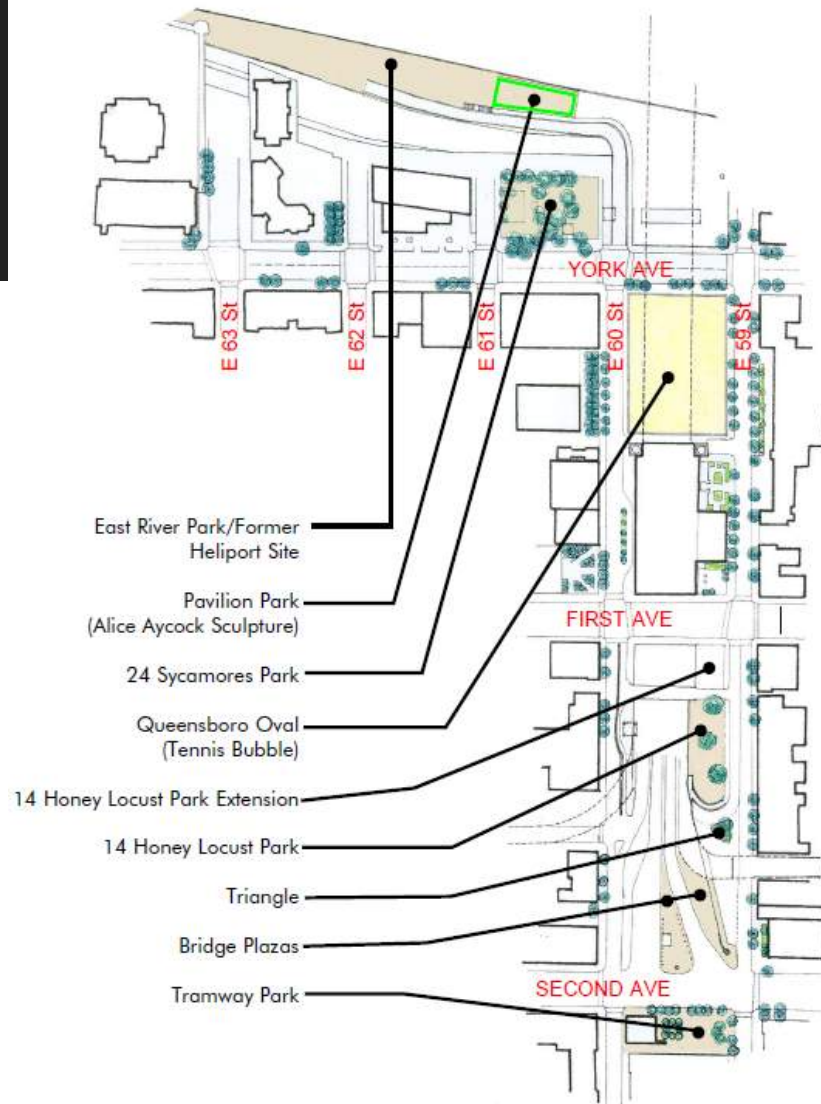


## Existing Planning Document

- Community Board 8 | 197-A Plan for the Queensboro Bridge Area
- Summer 2006



## Existing Conditions





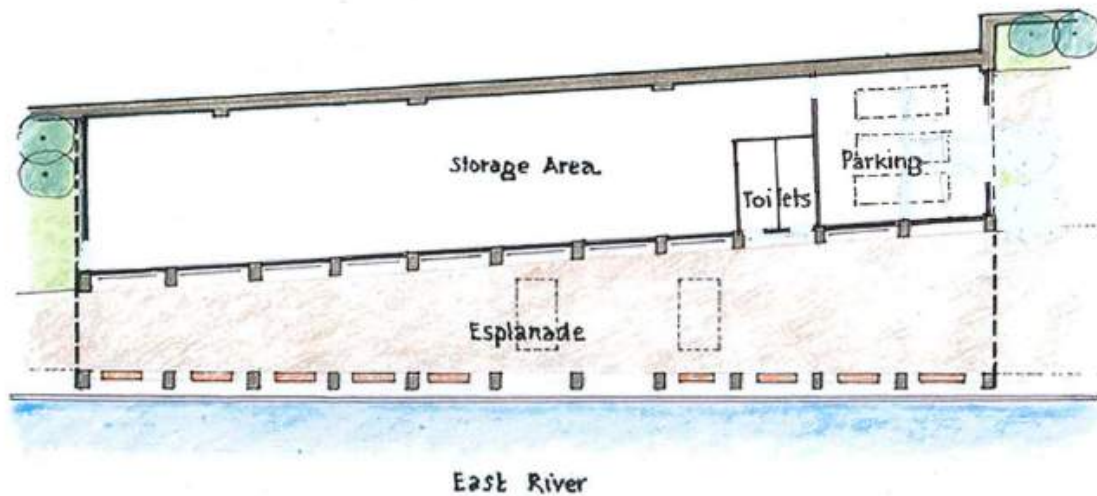
## 197-A Plan | Queensboro Bridge Area



- Over 30 years of planning “to improve and regenerate precious and vastly underutilized waterfront and open spaces.”
- “The potential exists to create a significant extension to the East River Esplanade, incorporating the former sanitation station structure.”

Existing  
Conditions

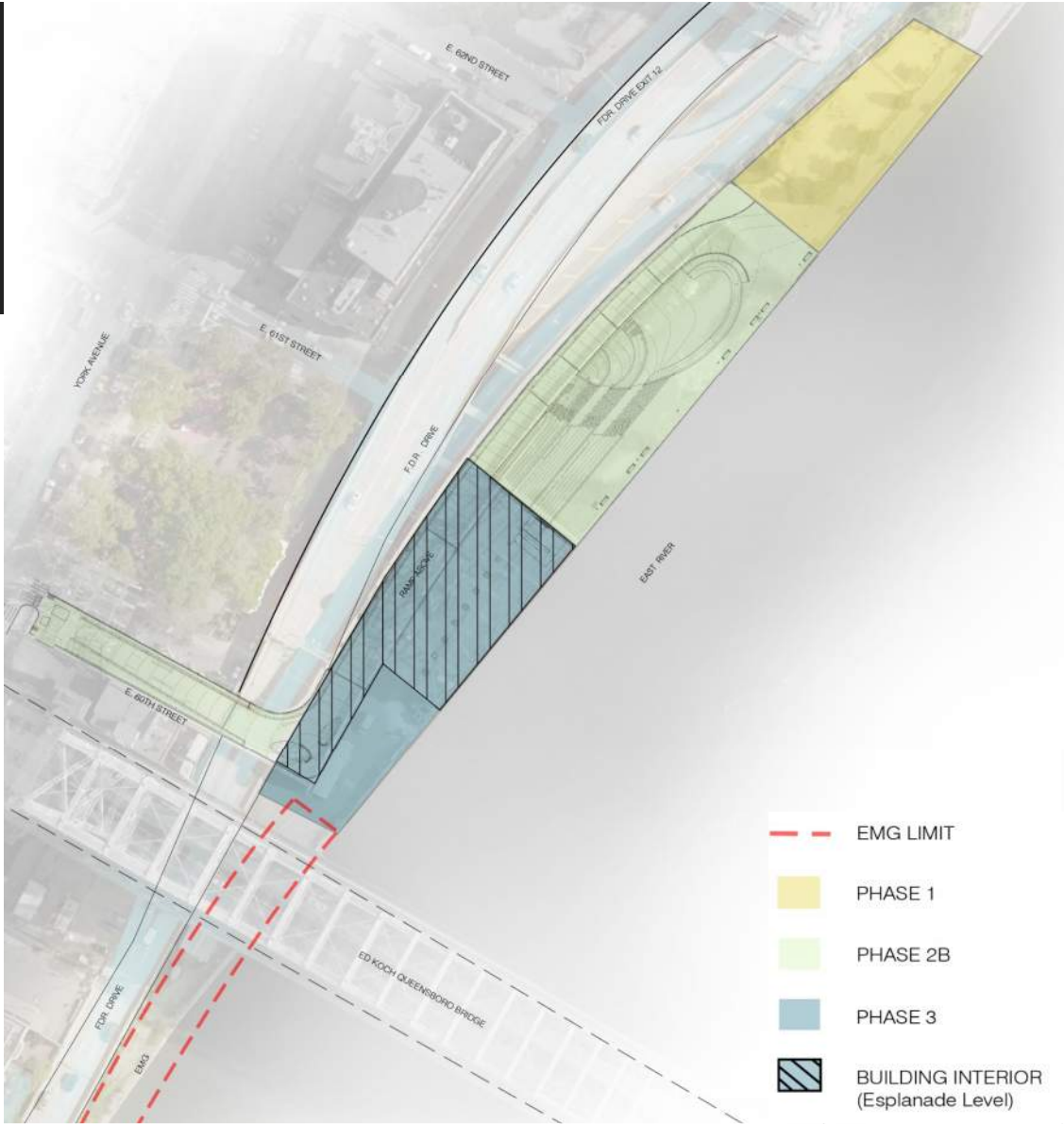
## 197-A Plan | Queensboro Bridge Area



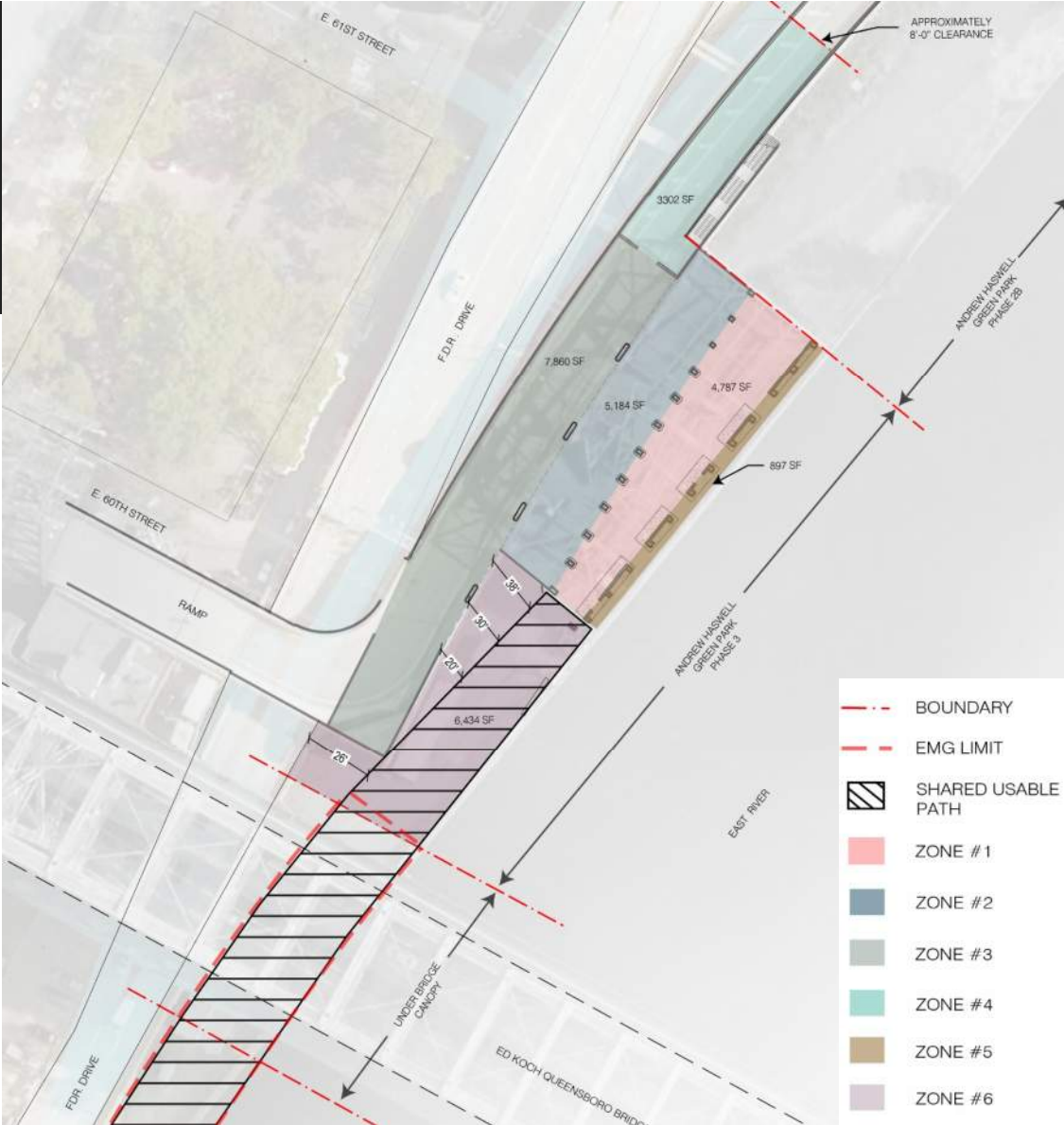
- “the concrete-framed structure would create a well-lit and undercover space”
- “the rear portion of the structure for park maintenance uses, including storage space and a parking area for maintenance vehicles”
- “A seasonal café should also be considered”



Existing  
Conditions



Existing  
Conditions





Andrew Haswell Green Park – Phase 3

# Precedent Examples

## Design Considerations

- Human Scale Elements
- Accommodate Bicycle and Pedestrian Access
- Accommodate Vehicular Access and Maintenance
- Flexibility (of Public Program)
- Resiliency to Sea Level Rise
- Pedestrian Amenities
- Public Art
- Lighting Within Structure
- Mitigate Sound and Fumes from the FDR
- Public Safety



An aerial photograph of the Aarhus Waterfront Promenade in Denmark. The image shows a wide, curved wooden boardwalk that runs along the water's edge. To the left, a modern building with a curved, tiered facade is visible. A large, curved wooden staircase with a glass railing leads up from the boardwalk to the building. Several people are sitting on the steps. In the foreground, a woman in a colorful patterned skirt and a man in a brown shirt and black shorts are walking away from the camera. To the right, a woman in a dark blue dress is walking towards the camera. In the background, three large blue cranes are visible on the water. The sky is blue with some clouds.

# MAKE IT ABOUT LEISURE

Aarhus, Denmark – Waterfront Promenade



MAKE IT A DESTINATION



Miami – The Underline Bike Repair Kiosk



MAKE IT UNIQUE

Chicago – South Pond Pavilion





MAKE IT UNEXPECTED



Boston – Southeast Expressway Park



MAKE IT A VIBRANT PLACE



Vancouver – JJ Bean Coffee



# MAKE IT YEAR ROUND



Washington, D.C. – Watergate Hotel

# MAKE IT WELCOMING

Brazil – Atelie Wals Brewery





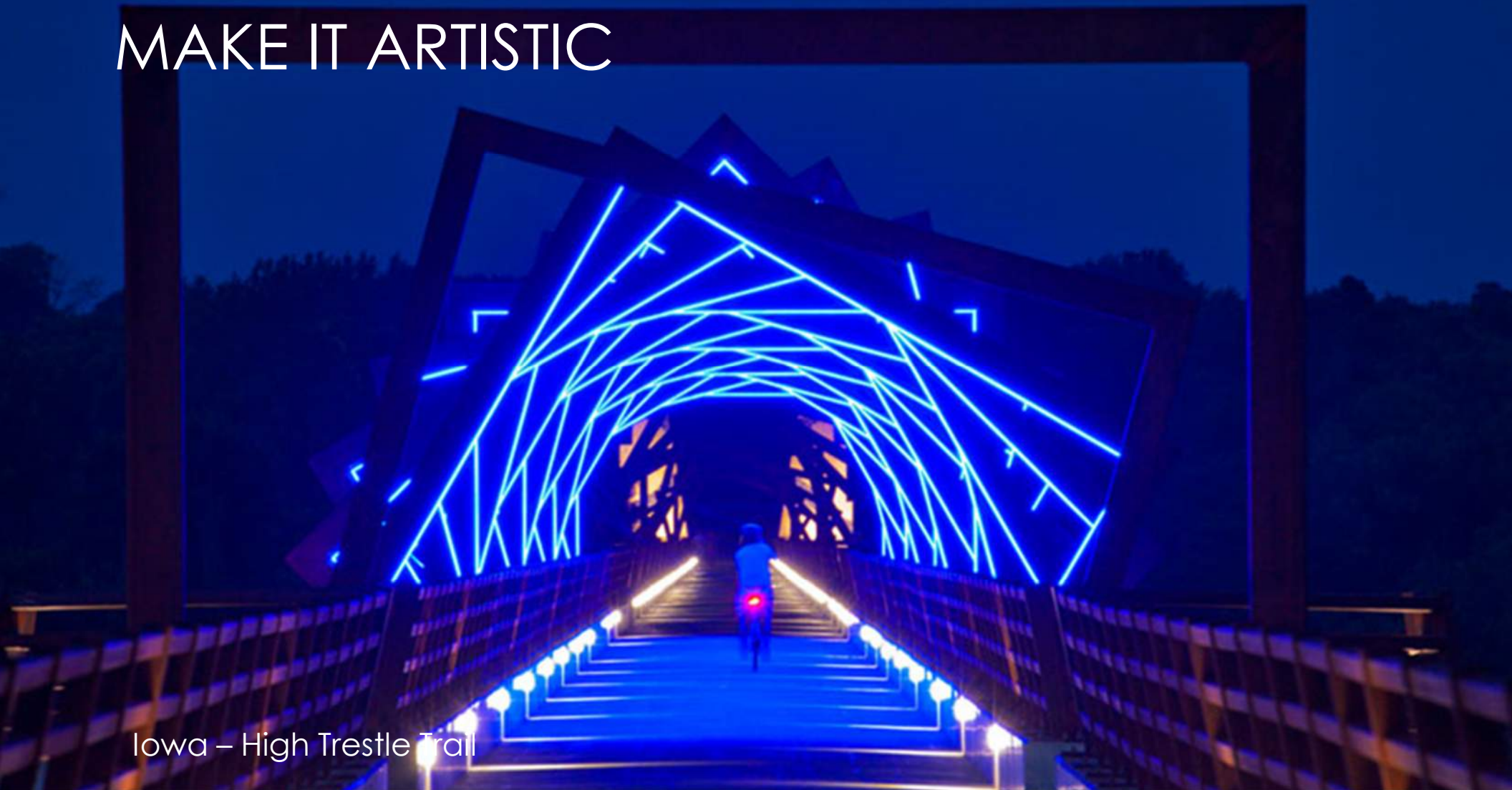


MAKE IT AN EXPERIENCE

France – New Vieux Port Pavilion



MAKE IT ARTISTIC



Iowa – High Trestle Trail

## Next Steps in Planning

- **6/27:** CB8 meeting (EMG project update)
  - ✓ Present overview and solicit feedback on program
- **Late July**
  - ✓ Present (1) draft conceptual plan and solicit feedback
- **Early September**
  - ✓ Present final conceptual plan