

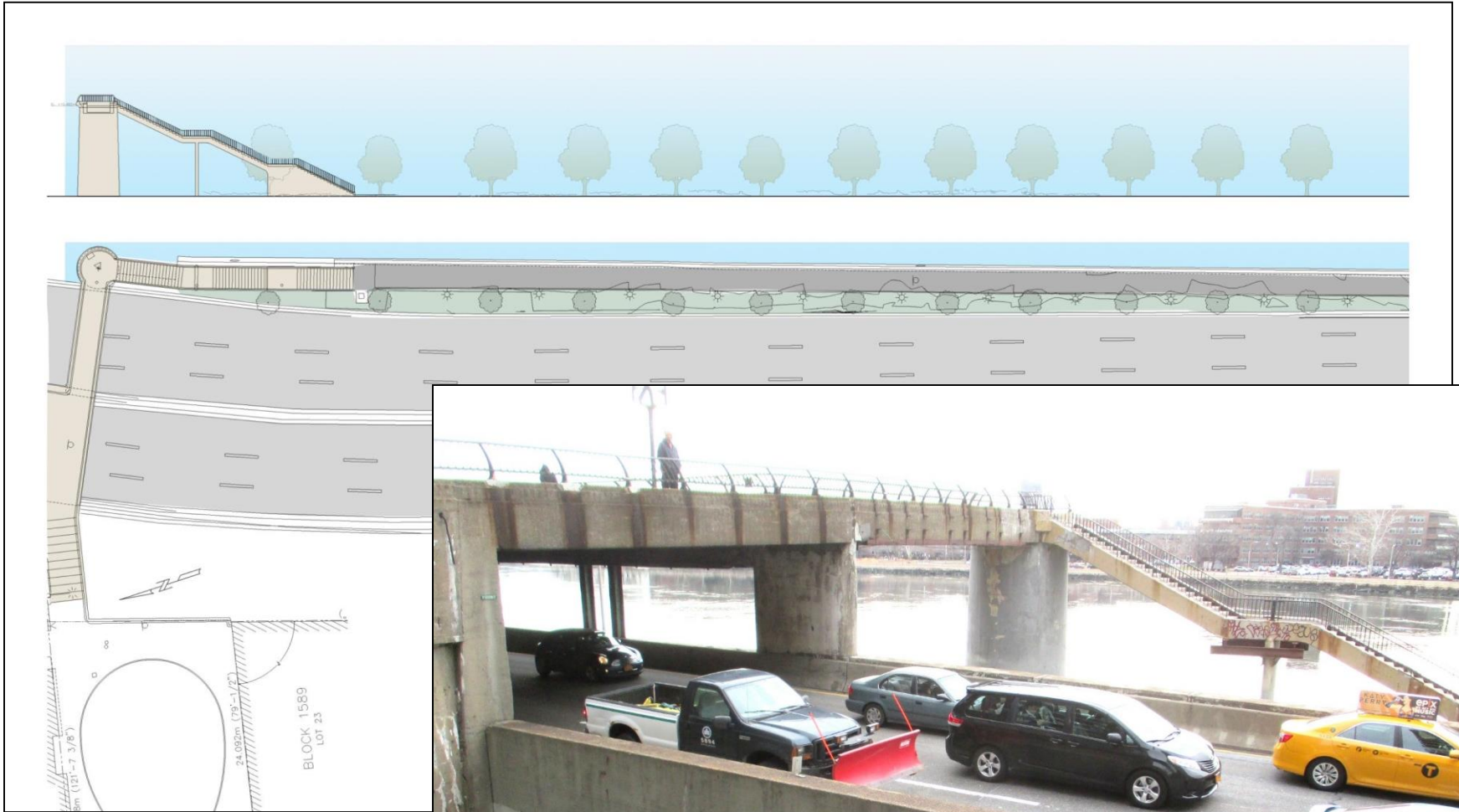
Update for Community Board 8

E. 81st Street Pedestrian Bridge

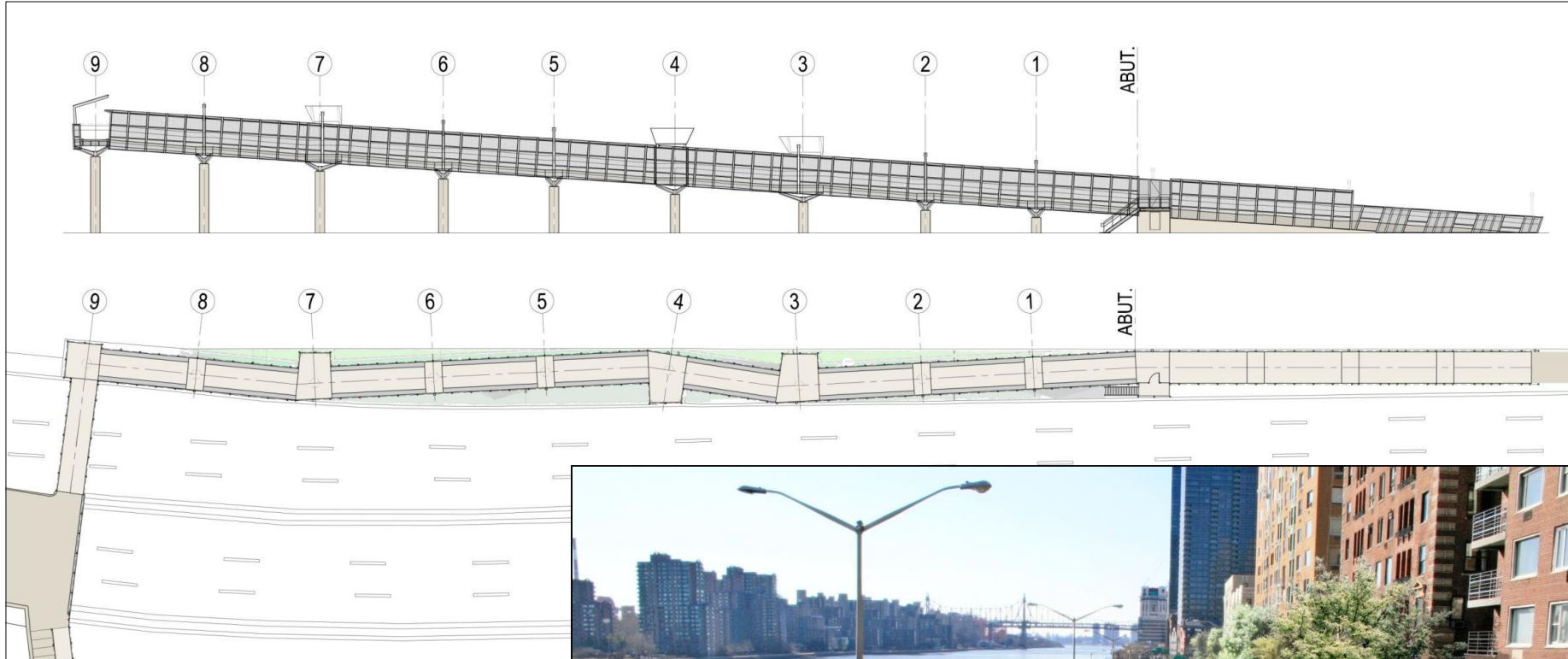
HBPED100M

OVERVIEW

- Initial Scope of Work
- Changes (Field Conditions)
- PDC Resolution Design Changes
 - Viewing Windows
 - Lighting Reduction
 - Cul-de-sac ADA Ramp
- Update on Project Progress
- Remaining Work
- Questions & Answers



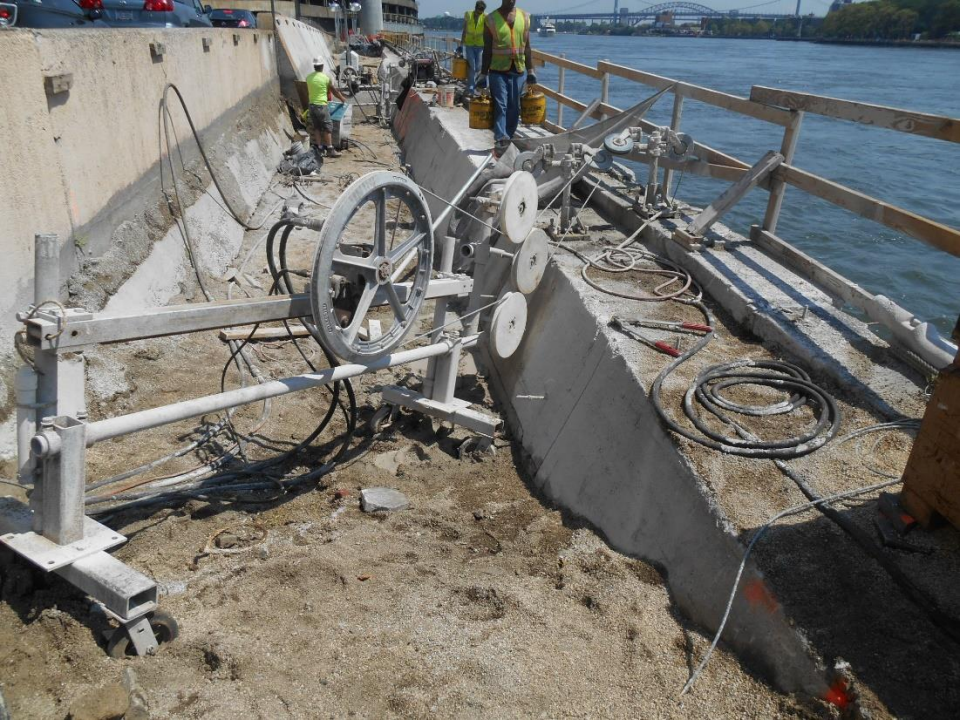
Remove the Bridge
and Stairway



Install New Bridge and Ramp



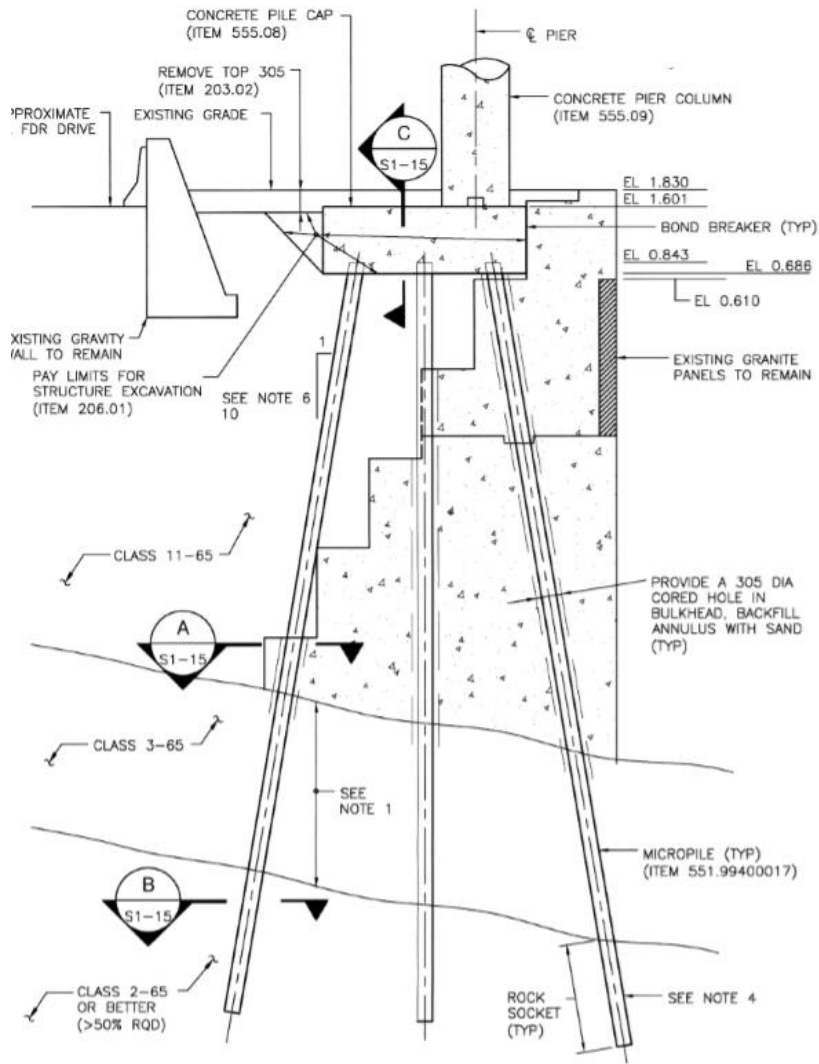
Demolish the Existing Stairway



Remove Sections of the Seawall



Prepare the Seawall for Installing Micropiles



Install 100 Micropiles



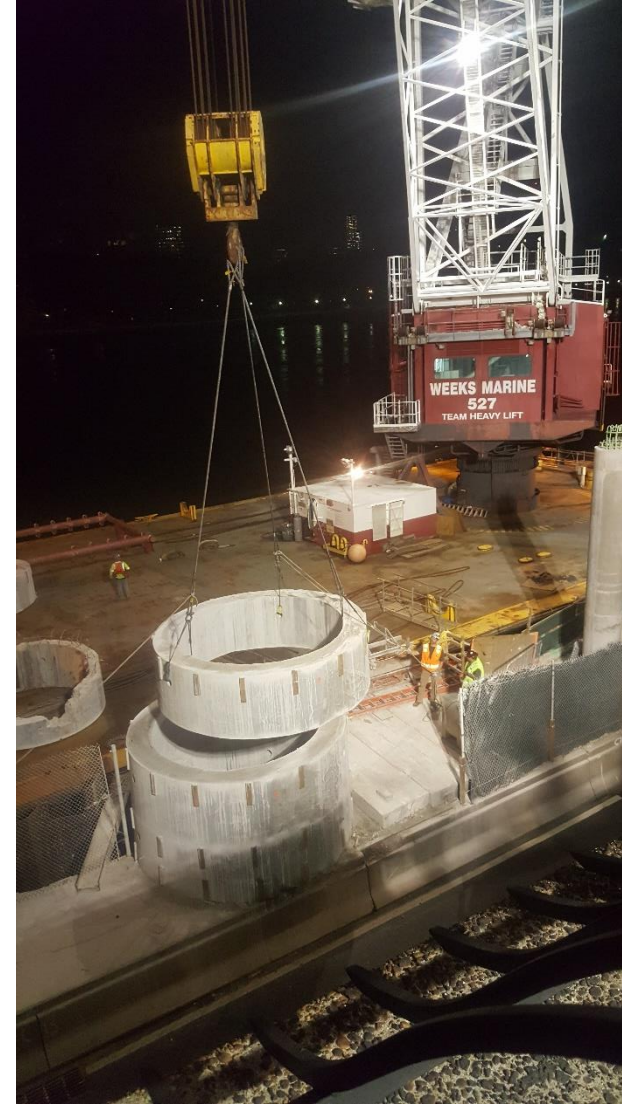
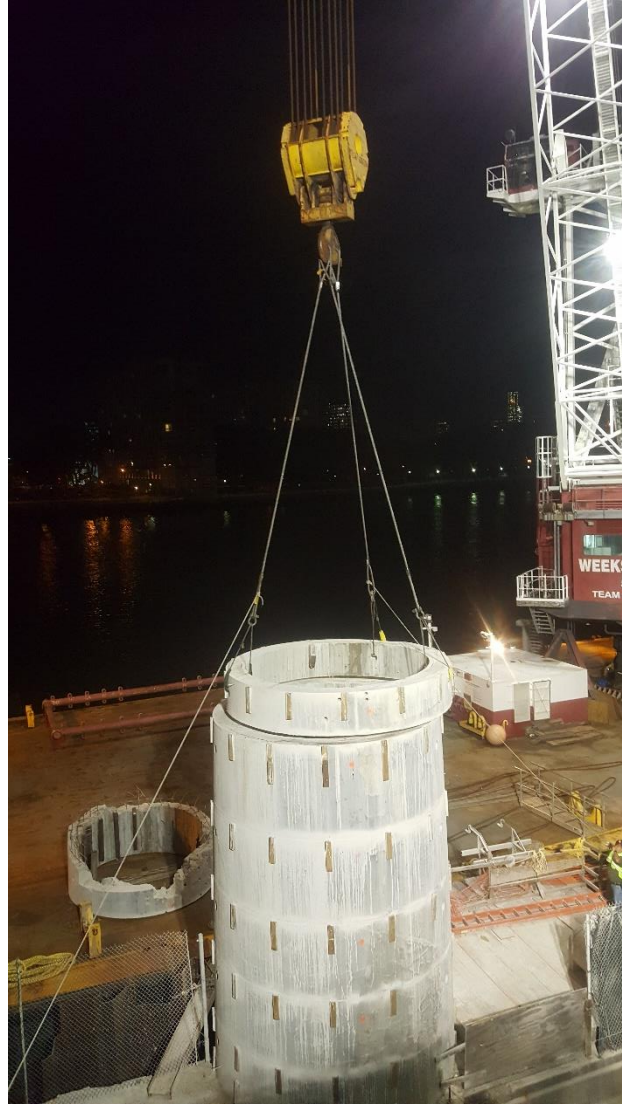
Excavate Pile Caps



Install Rebar Cages and Pour Concrete for Pile Caps



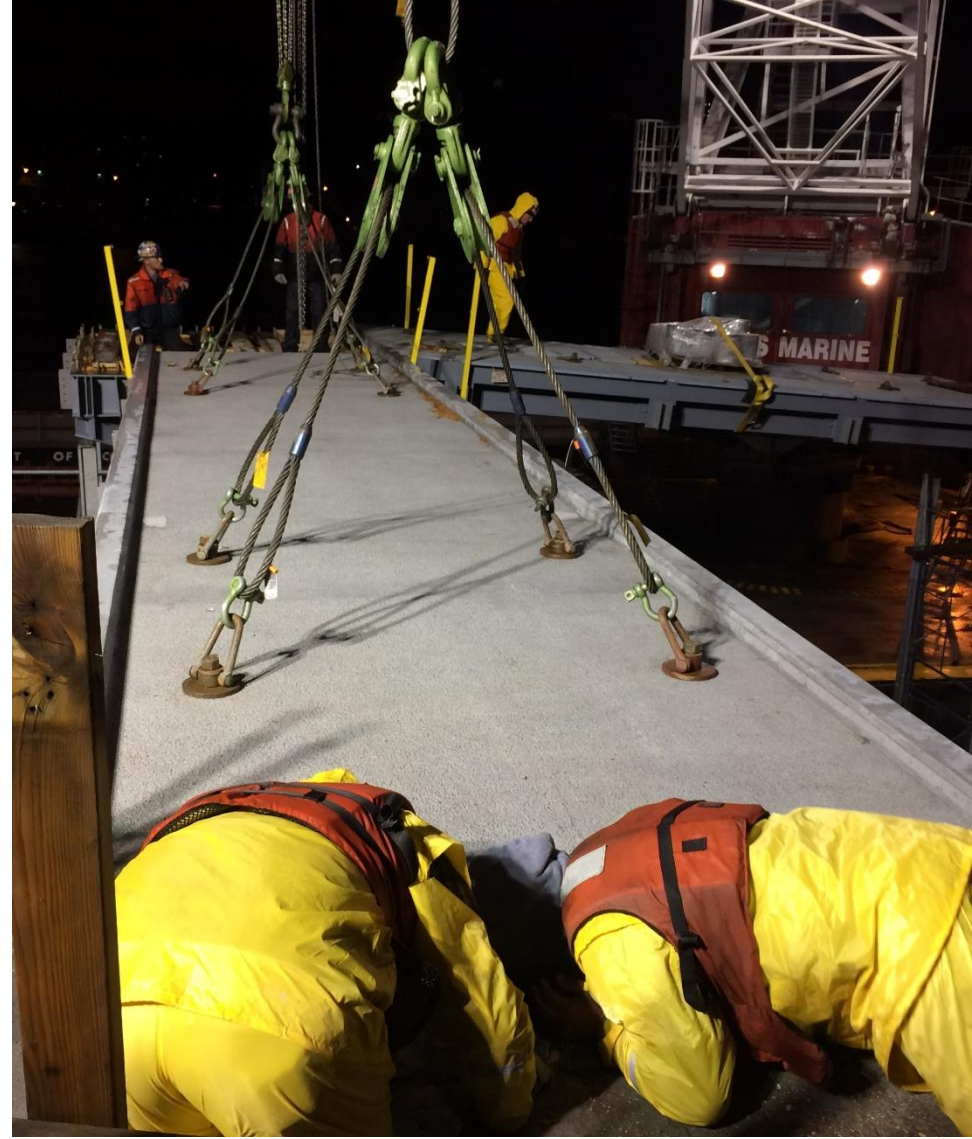
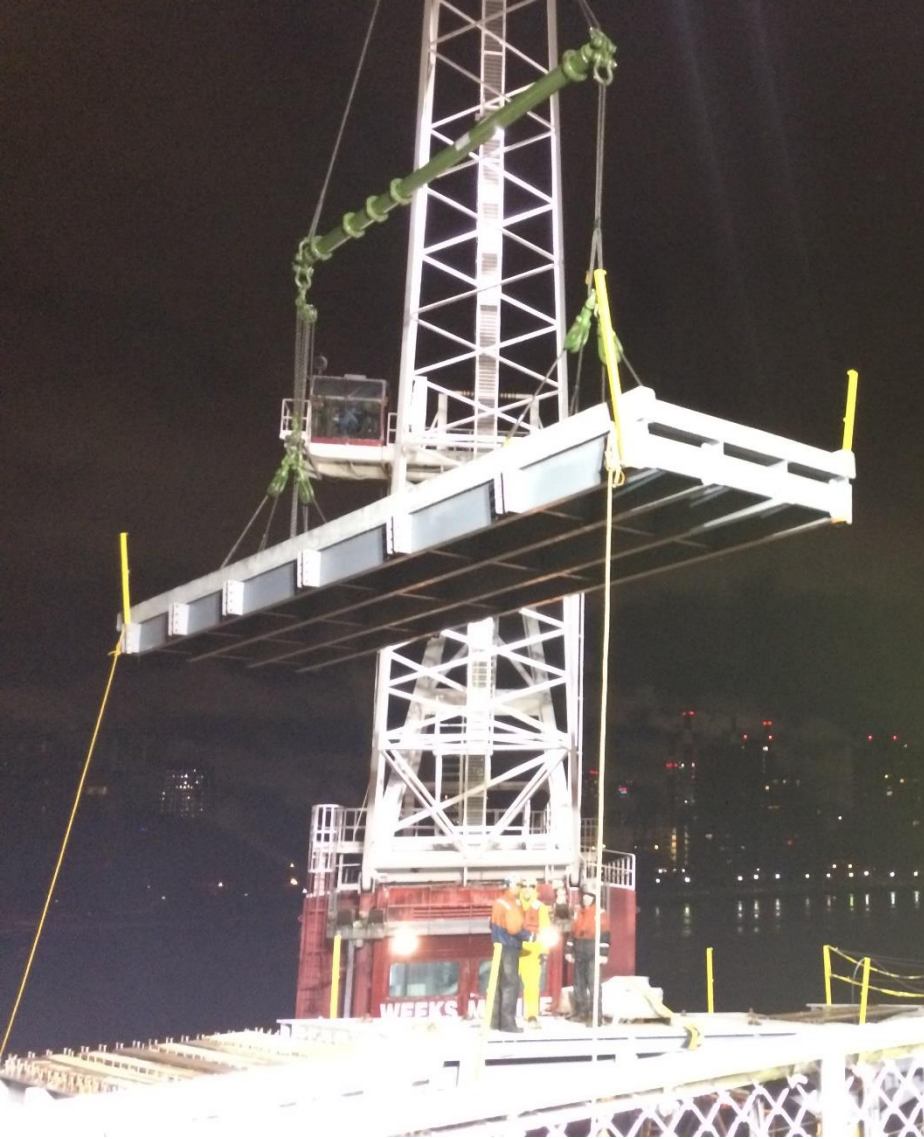
Install Pier Columns and Remove Bridge



Demolish the Concrete Tower



Install Hub & Arms



Install Spans and Bridge

DELAYS

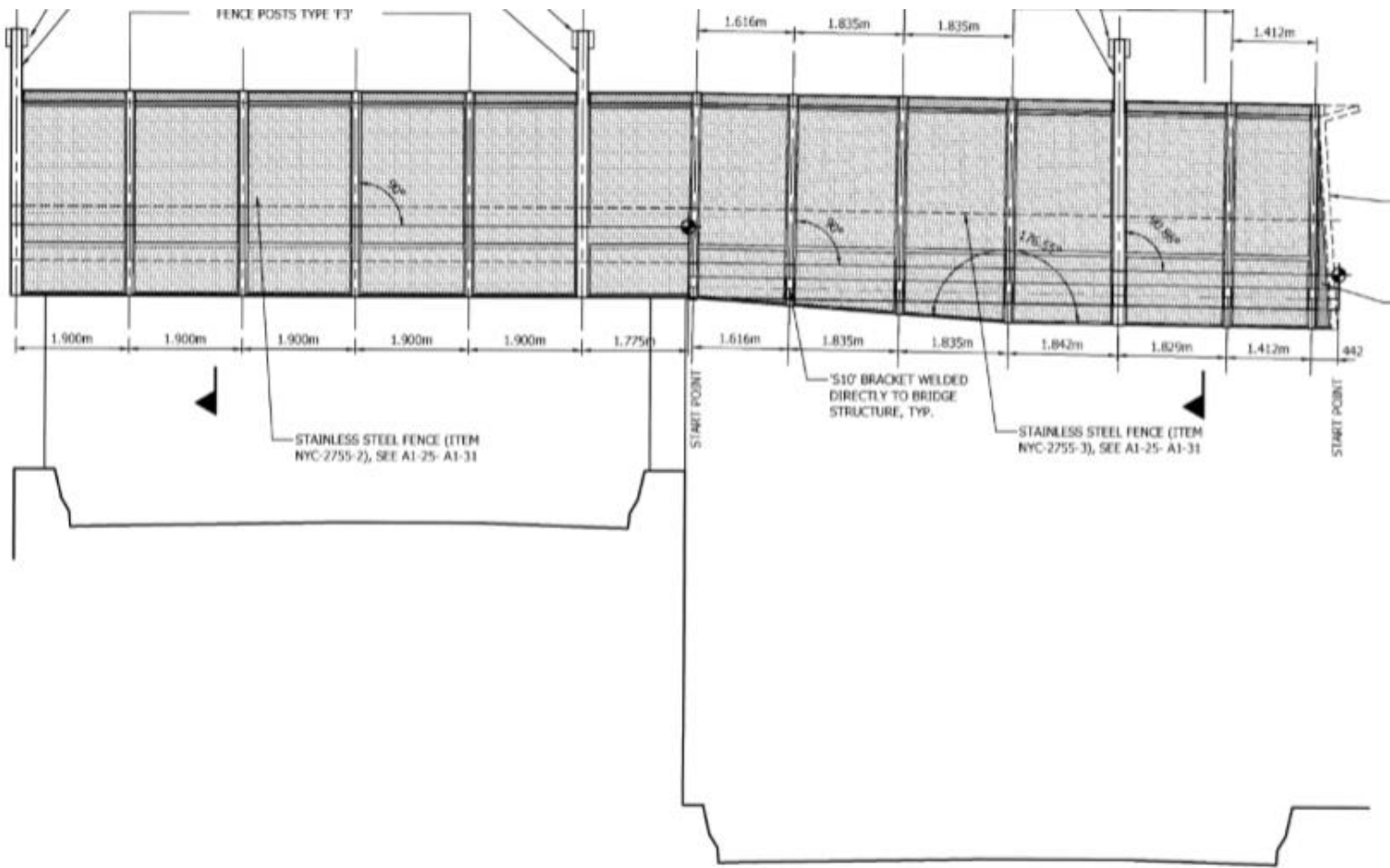


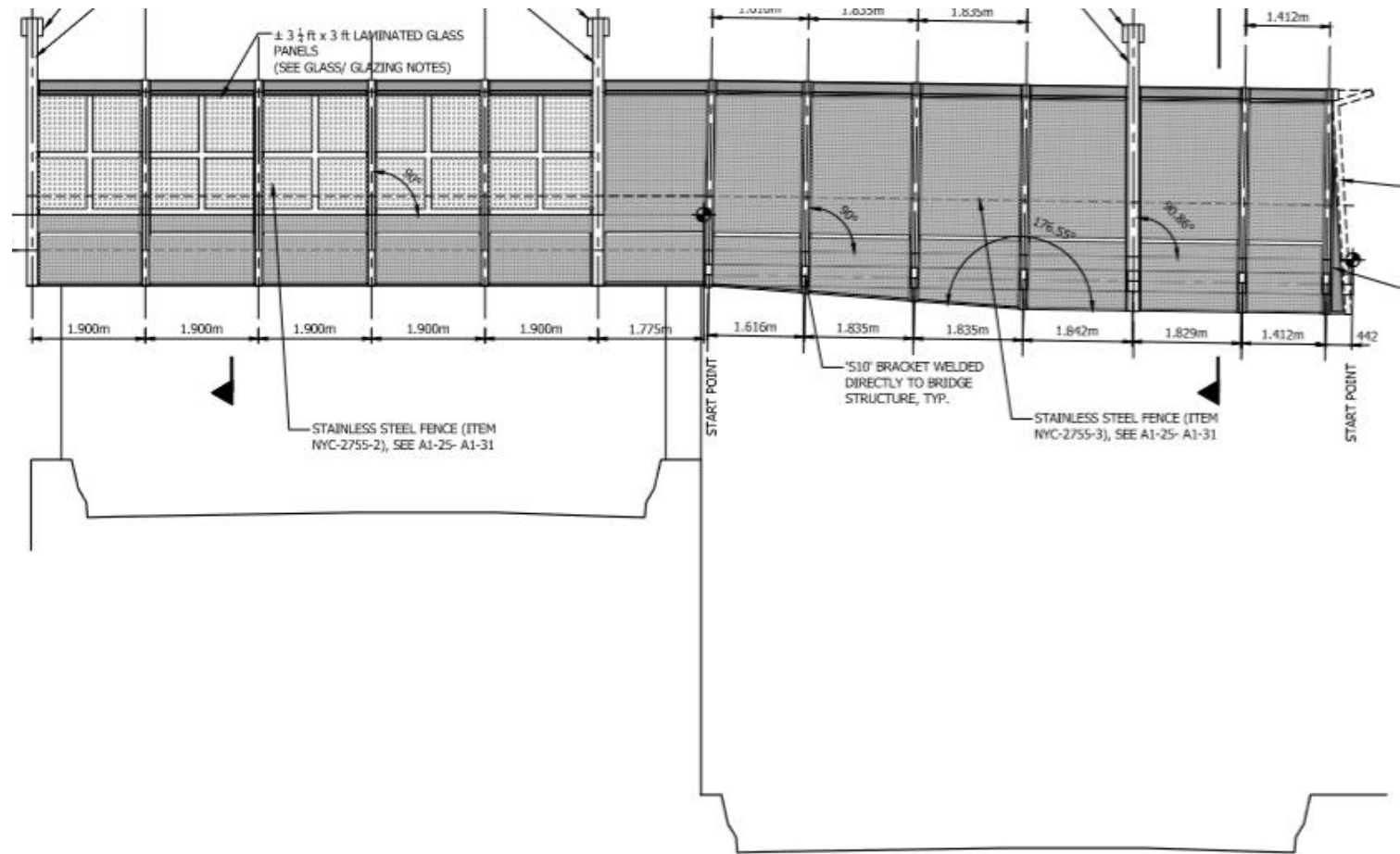
North Abutment Retrofit (8 Months)

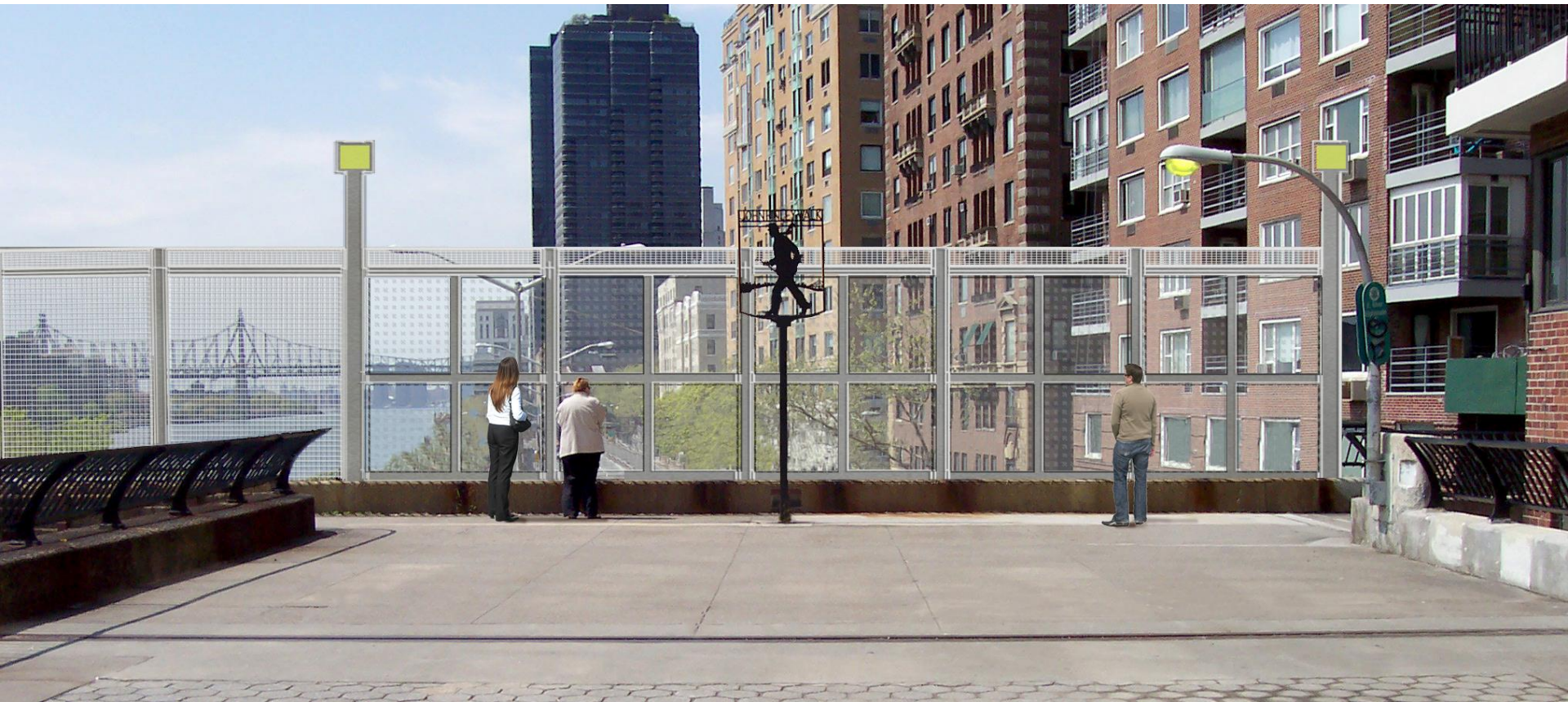
DESIGN CHANGES

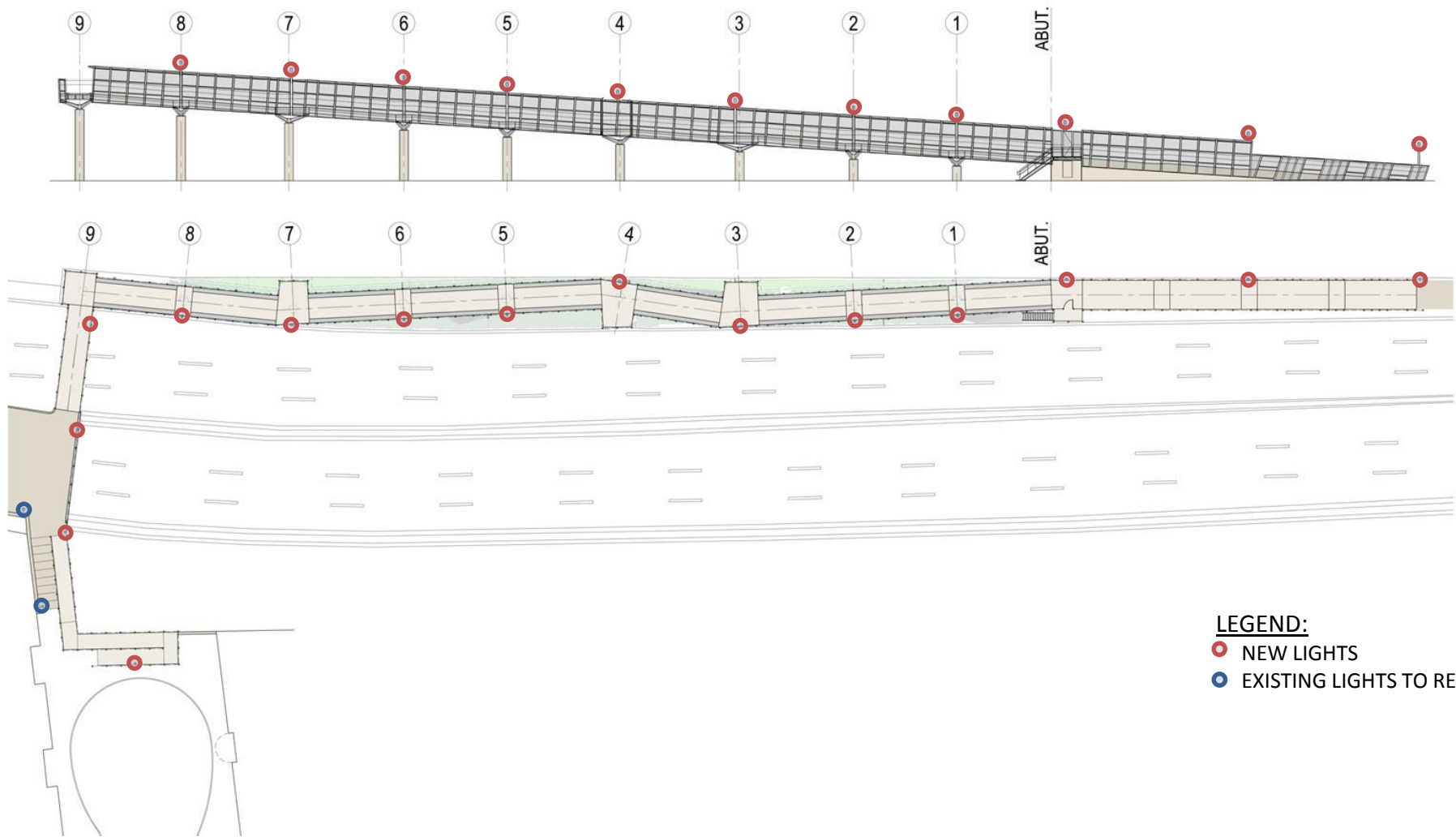
PDC Resolution requested the following changes:

1. Explore the Possibility of creating a viewing window at the southern terminus of John Finley Walk
2. Restudy the lighting fixtures to be more contextually appropriate and confirm the shielding is sufficient
3. Redesign the ADA ramp connecting East 81st Street to John Finley Walk to:
 - a) be more contextually appropriate, particularly with regard to the railing
 - b) eliminate or minimize new lighting
 - c) better resolve the pinch point at the adjacent residential building service entrance

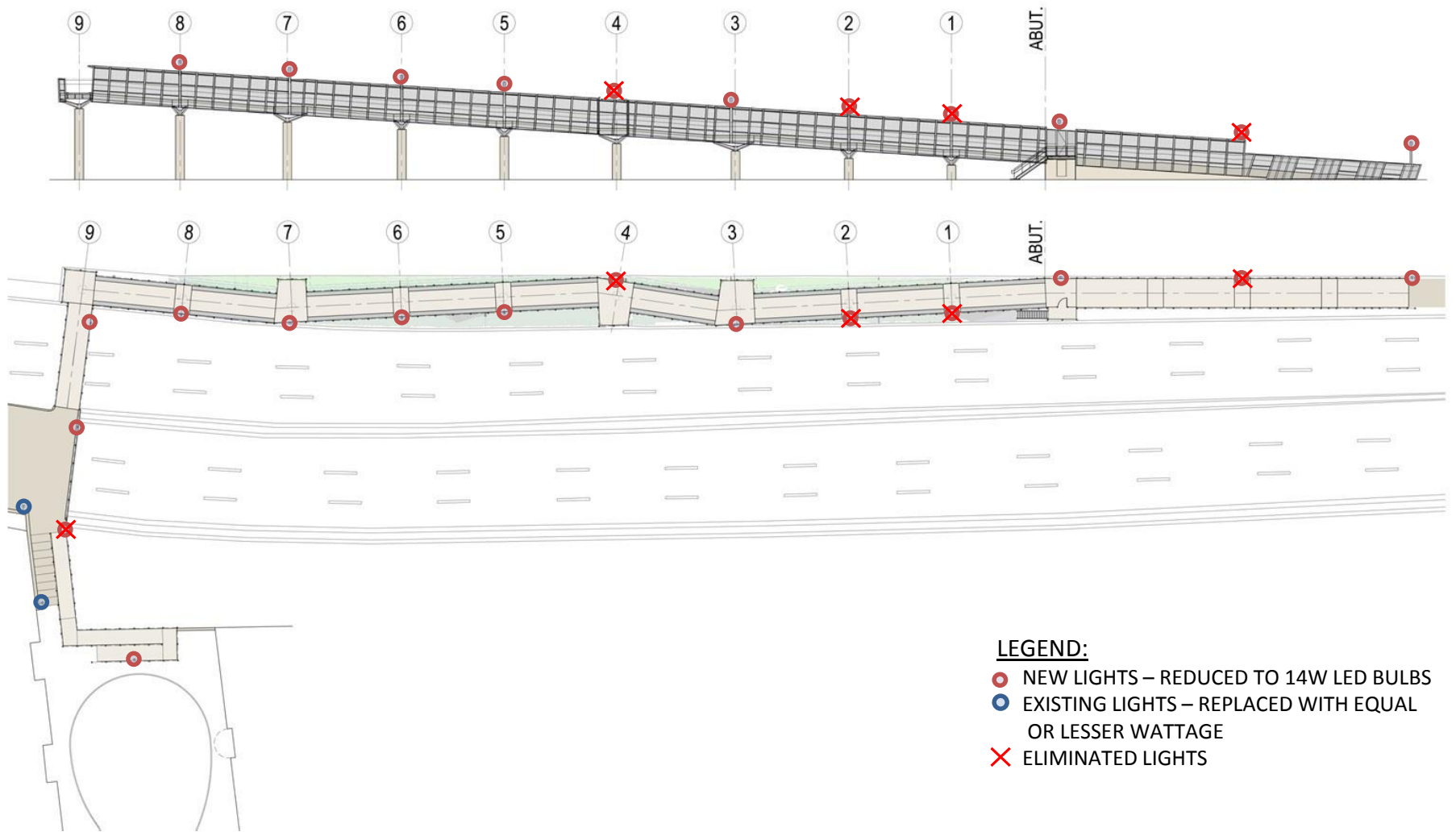








- LEGEND:**
- NEW LIGHTS
 - EXISTING LIGHTS TO REMAIN



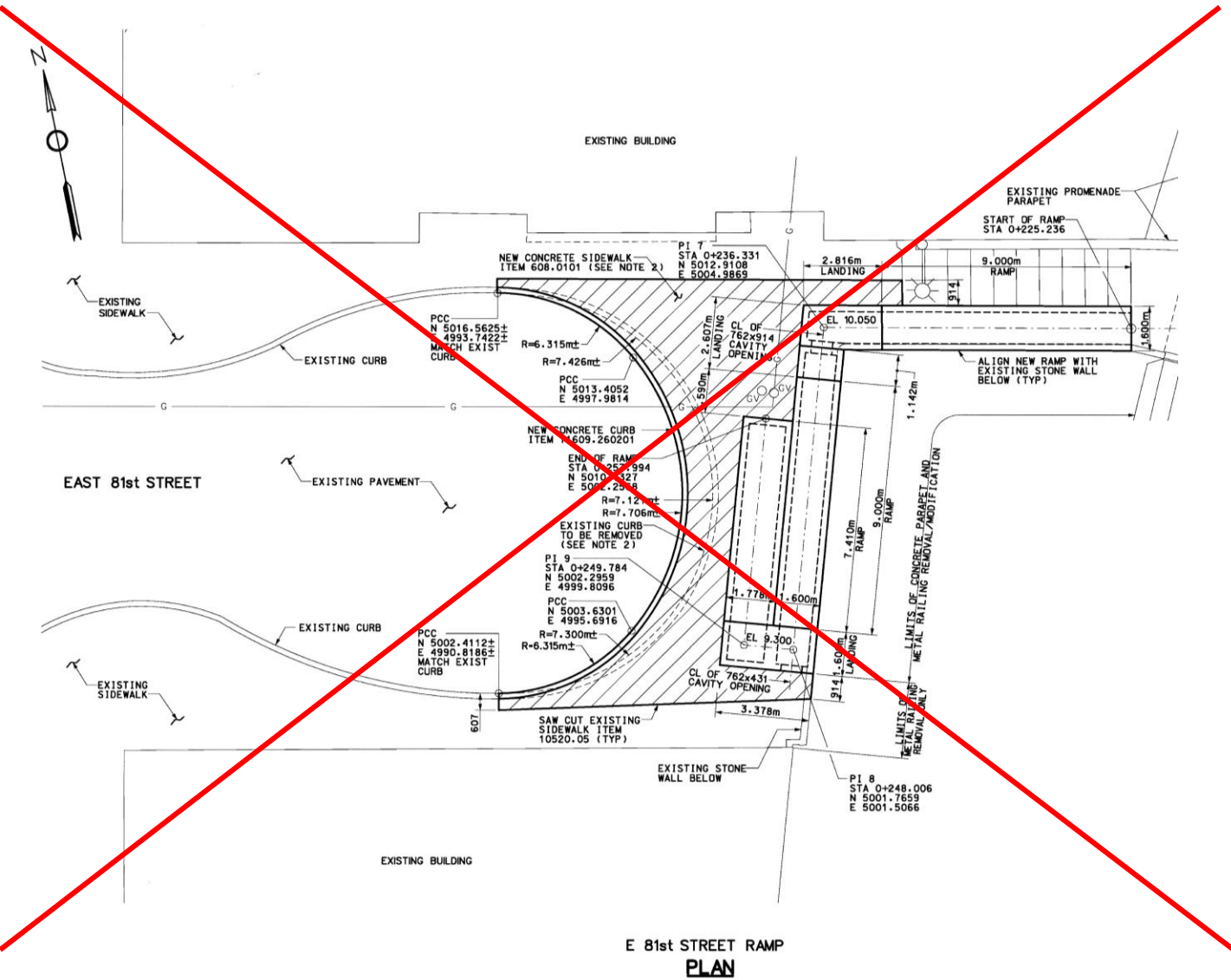


- LEGEND:**
- NEW 14W LIGHTS
 - EXISTING LIGHTS REPLACED WITH 36W AND 14W FIXTURES
 - ✗ ELIMINATED LIGHTS

Changes Made on the Lighting

- Reduced new luminaires on pedestrian bridge to lowest possible wattage of 14W.
- Eliminated proposed light poles at the South Abutment, Pier 1, Pier 2, Pier 4, top of the E. 81st Street Stairs, and in the E. 81st Street cul-de-sac.
- Replaced existing Cobrahead luminaires at the 81st Street Stairs/Promenade with equal or lower wattage fixtures.
- Reduced luminance levels as shown in the following table:

	Original Calculation	New Calculation
Max	75 Lux (6.97 Fc)	53.82 Lux (5 Fc)
Average	20 Lux (1.86 Fc)	19.27 Lux (1.79 Fc)



3. The Department of Parks and Recreation has decided to re-evaluate the question regarding access on the promenade holistically. During this evaluation process, DPR removed the cul-de-sac ramp from the scope of this contract.

SUMMARY

The initial work was expected to be completed in 18 months.

The North Abutment Retrofit prolonged the project 8 months (Total: 26 Months).

Design Changes added another 5 Months (Total: 31 Months).

So why aren't we done yet?

Fabrication Delays

REMAINING WORK

REMAINING WORK:

- Stainless Steel Fencing Fabrication and Installation
- Viewing Window Installation

SUBSTANTIAL COMPLETION: DECEMBER 2017

QUESTIONS & ANSWERS