

147-155 East 86th Street

Traffic & Transit
Presentation to CB8

June 14, 2017



147-155 East 86th Street - Project Overview

- As of Right Project
- Development Envelope & Zoning
- Revocable Easement
- MTA Improvements – ADA Elevator
- Enhancement of DOT Plans - BPP
- Newsstand Temporary and Permanent Relocation
- Bus Stop Location

147-155 East 86th Street

Philip Habib & Associates
Civil Engineer

Original & New Sidewalk Conditions

147-155 E. 86th Street – Original Street View



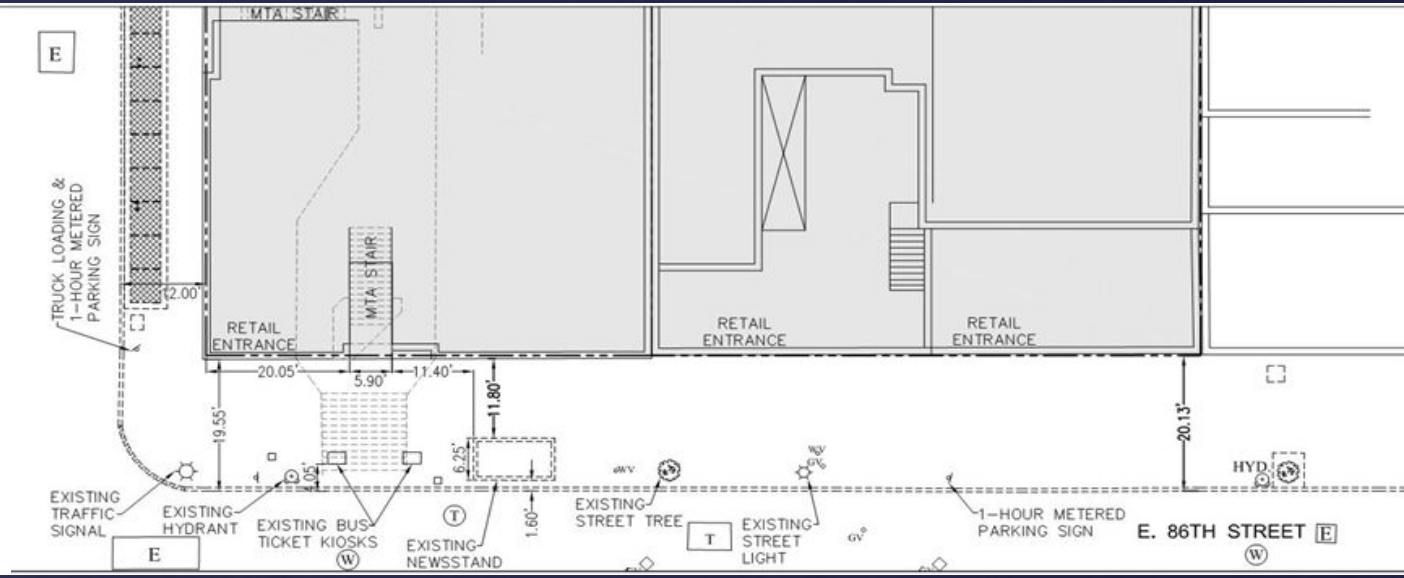
147-155 E. 86th Street – Future Street View



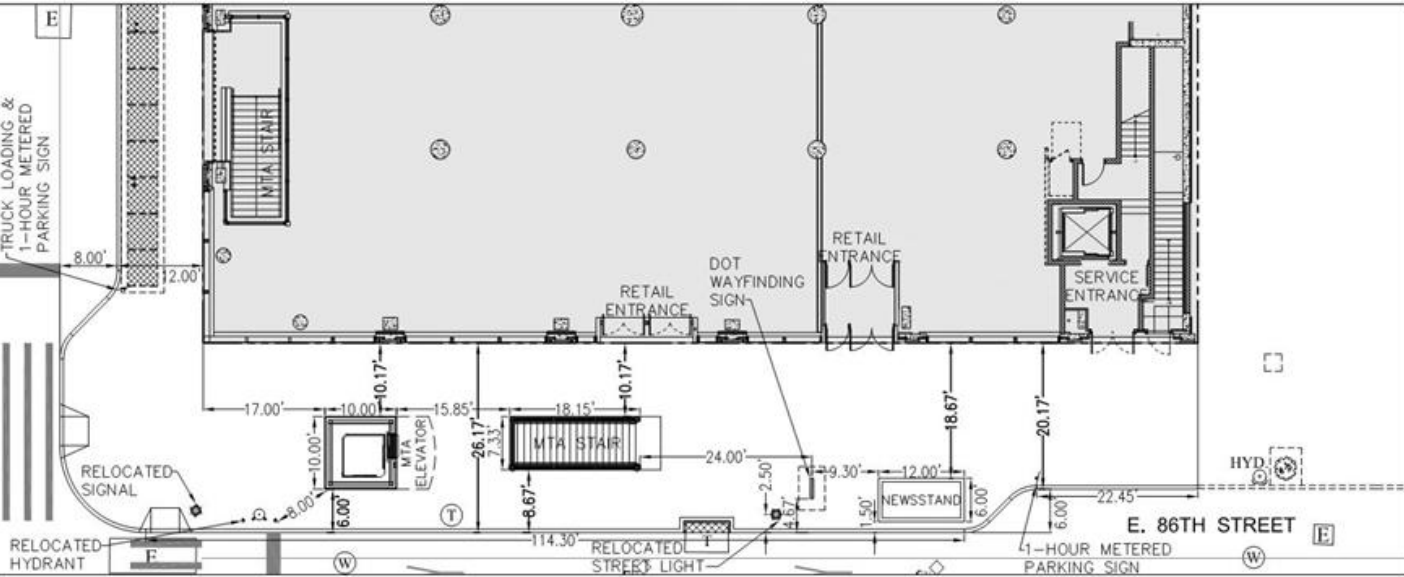
147-155 E. 86th Street – Future Street View



EXISTING



FUTURE



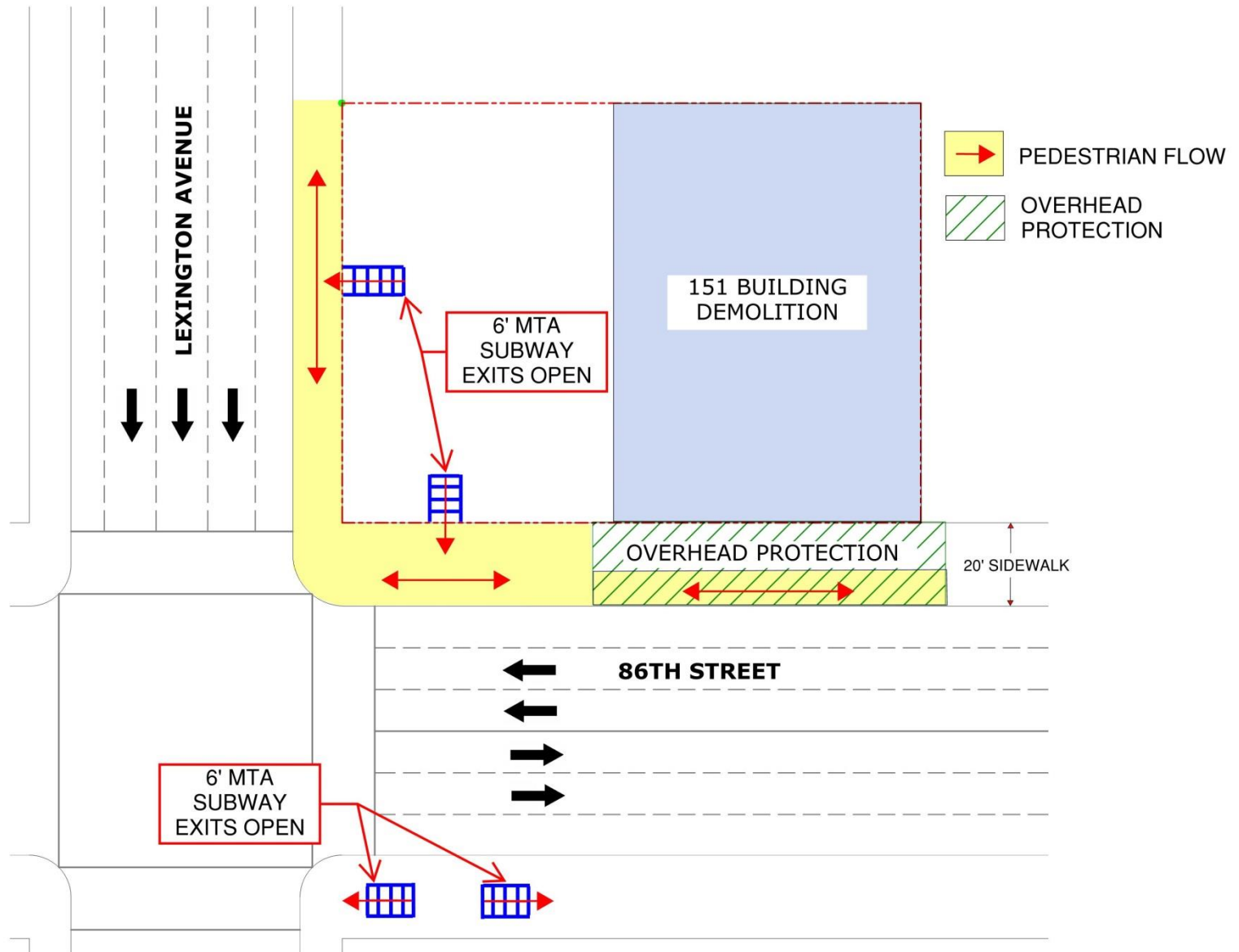
147-155 East 86th Street

Gilbane Residential Construction, LLC
Construction Manager

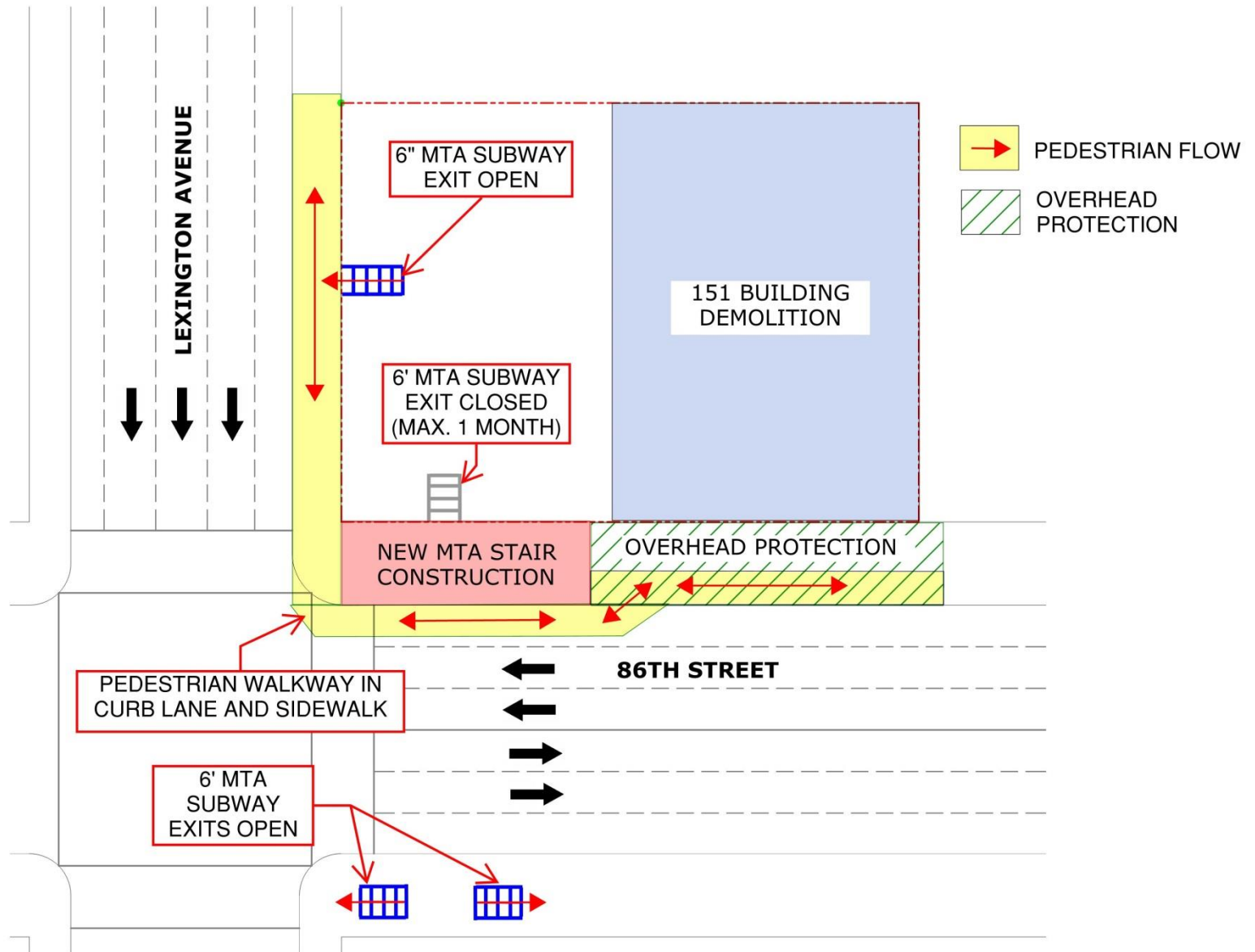
Phased Logistics Plans

Demolition of 151 E. 86th Street

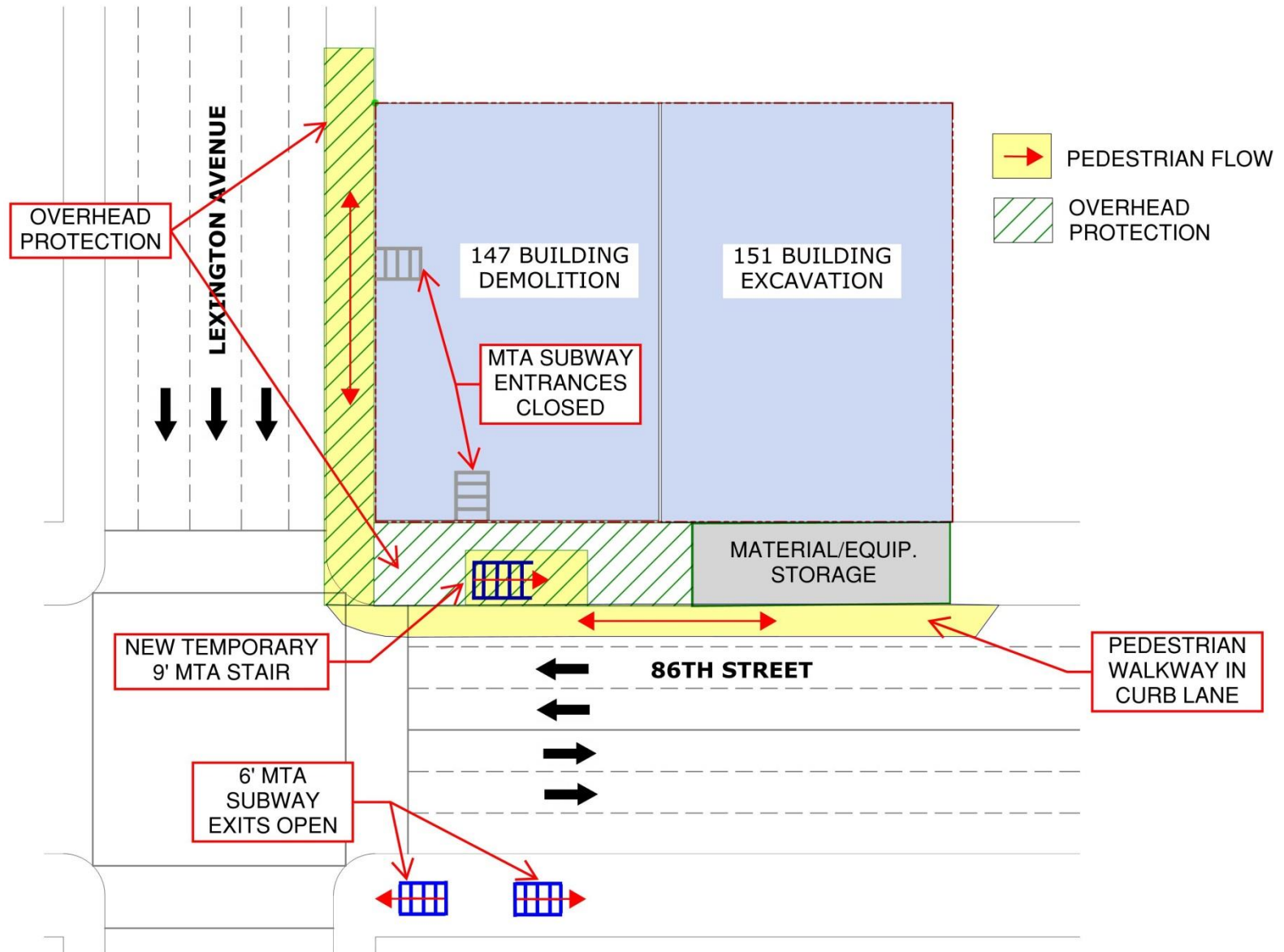
Ongoing until 6/30/17



Demolition of 151 E. 86th Street & MTA Stair Construction Summer 2017 (Completed by Labor Day)

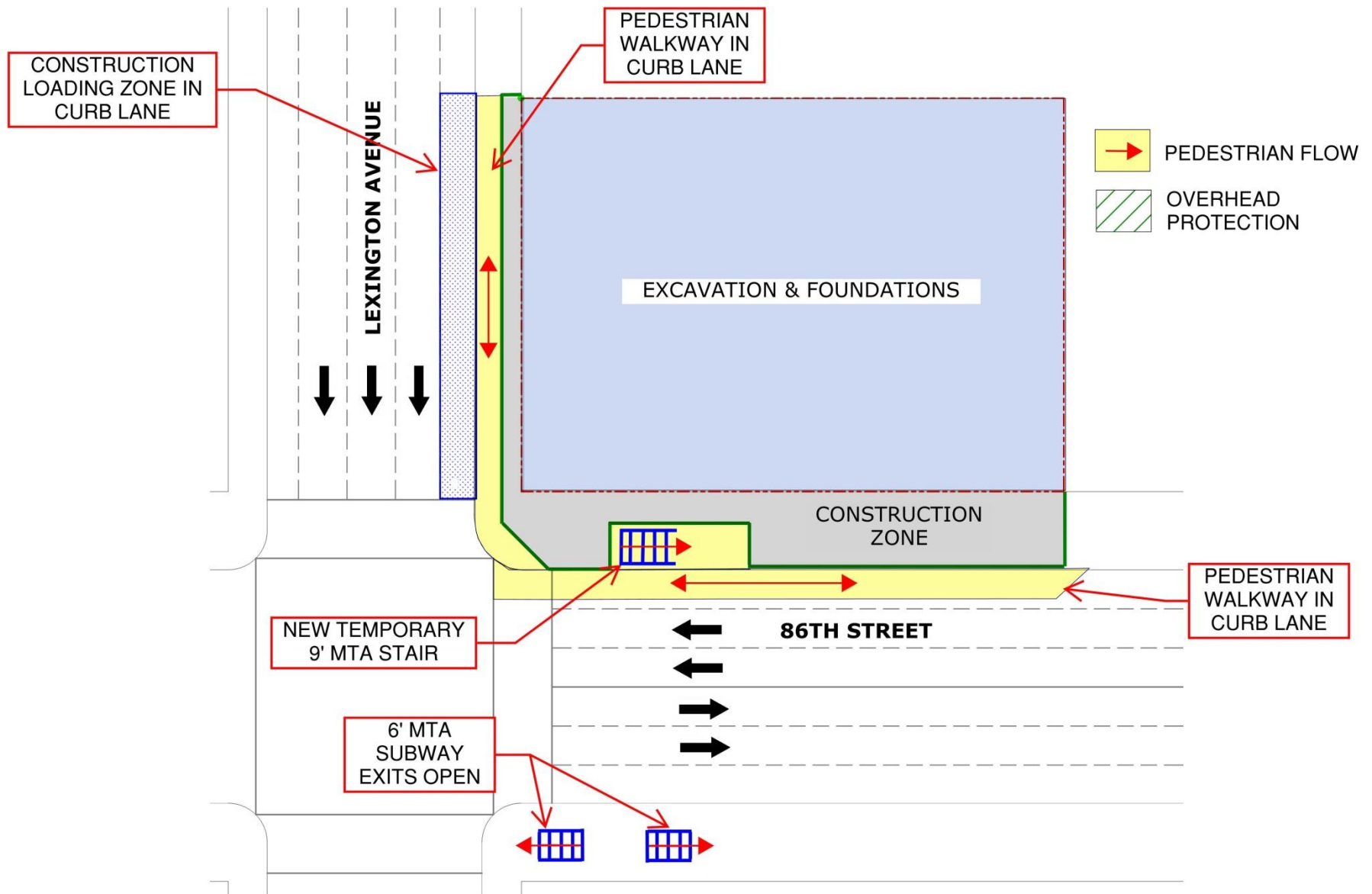


Demolition of 147 E. 86th Street & Excavation at 151 E. 86th Street Fall 2017



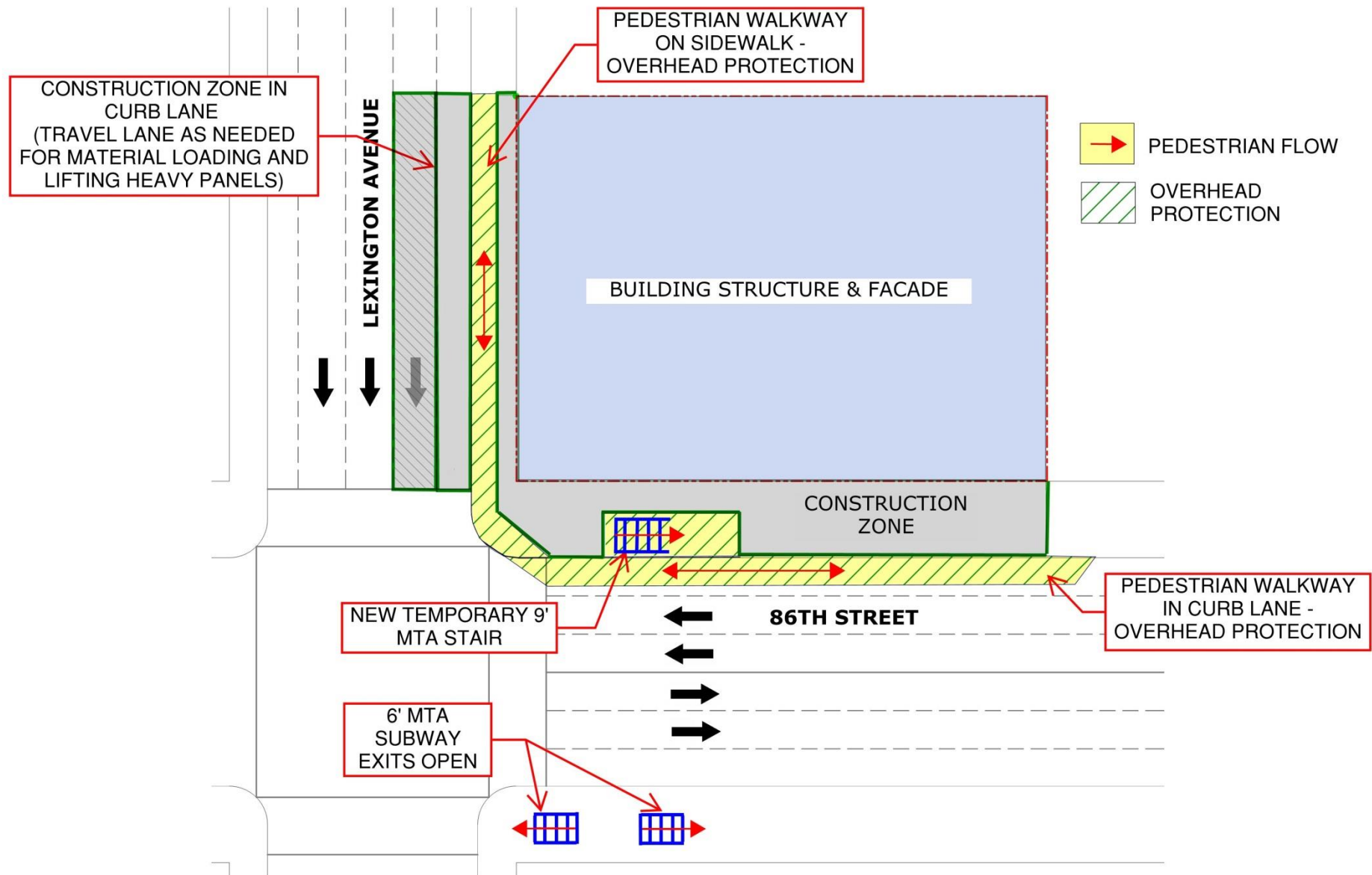
Excavation and Foundations

Fall 2017 to Spring 2018



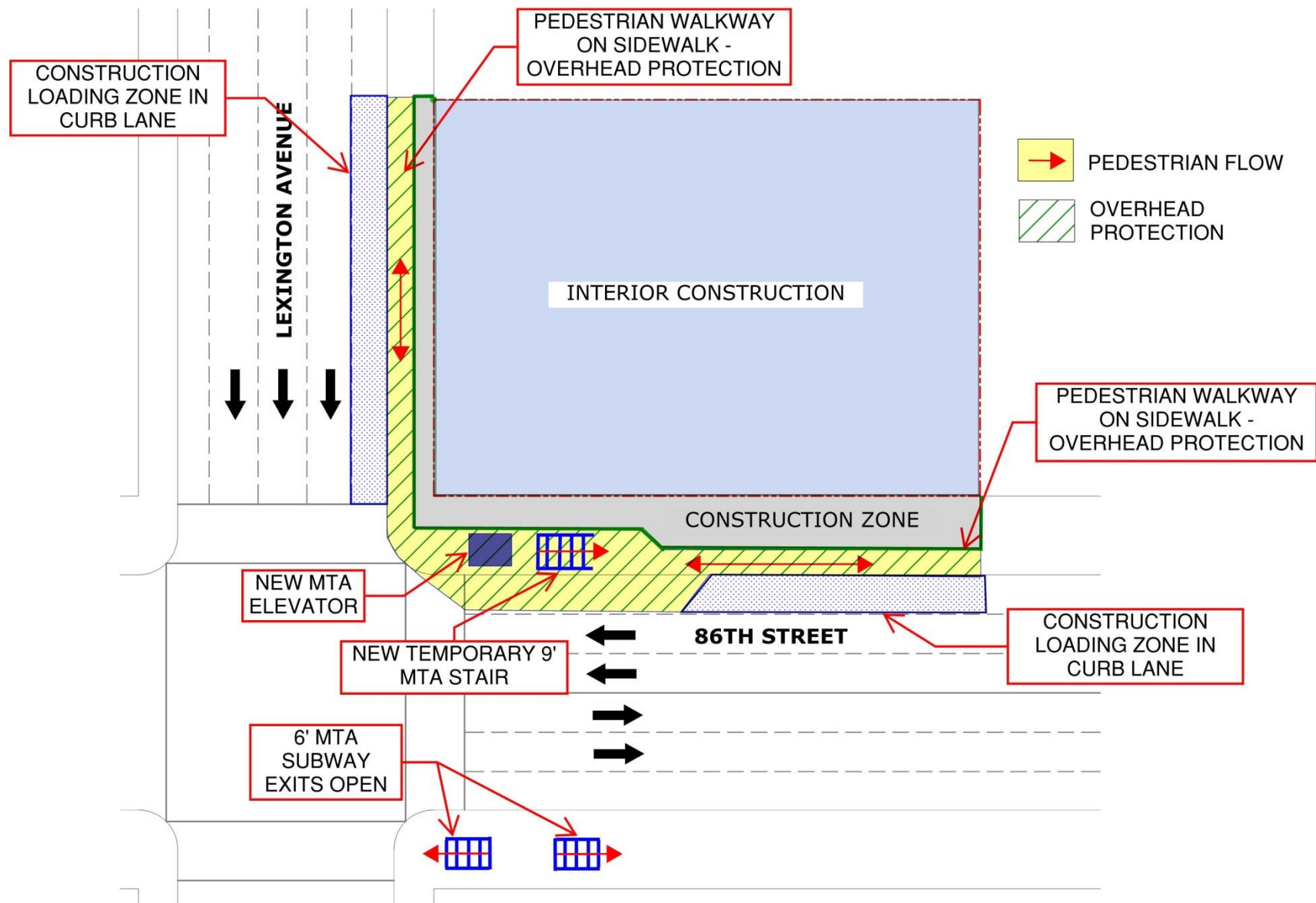
Building Structure and Façade

Spring 2018 to Winter 2018



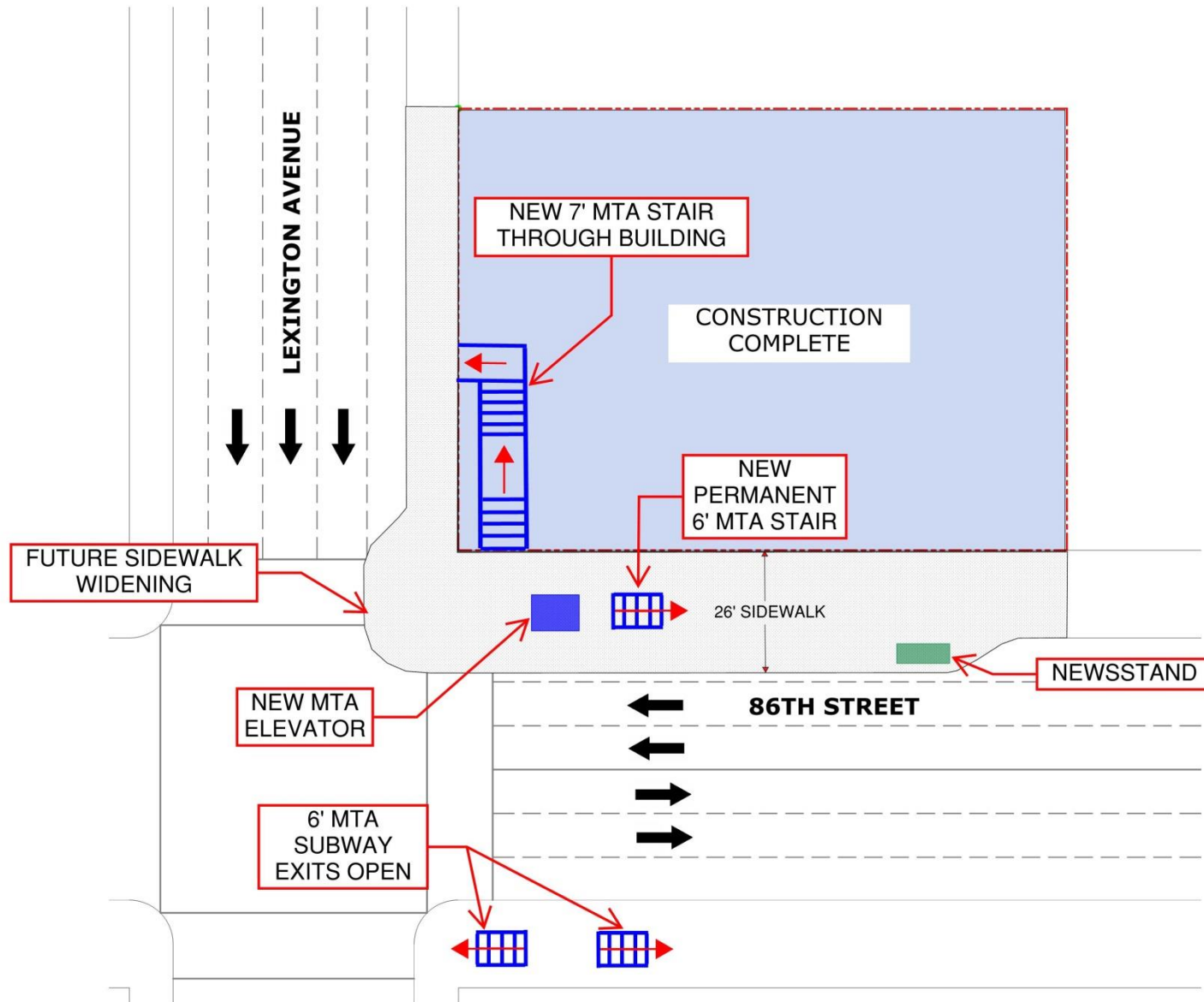
Interior Construction

Winter 2018 to Summer 2019



Construction Complete – Final Conditions

Summer 2019



147-155 East 86th Street

Questions & Answers

