

CORNELLNYC TECH
CITY MAP CHANGE

ROOSEVELT ISLAND, NEW YORK

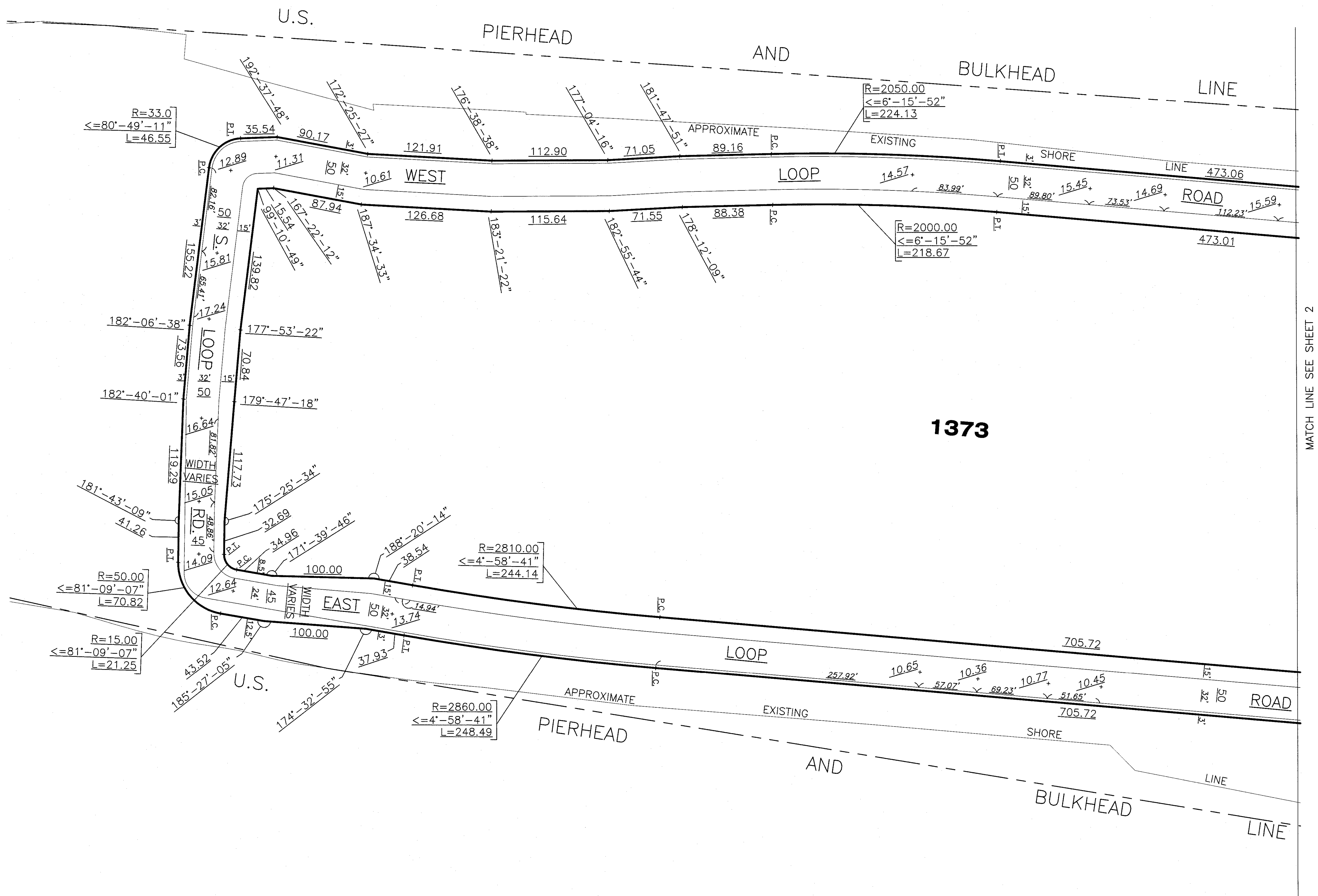
APPLICANT:
CORNELL UNIVERSITY
300 DAY HALL
ITHACA, NY 14853
Tel: (607) 255-2364

ENGINEER:
PHILIP HABIB & ASSOCIATES
102 MADISON AVENUE
NEW YORK, NY 10016
Tel: (212) 929-5656

SURVEYOR:
GALLAS SURVEYING GROUP
171 CHURCH LANE
NORTH BRUNSWICK, NJ 08902
Tel: (732) 422-6700

LEGEND

	Indicates street line heretofore established and hereby retained.
	Indicates street line heretofore established and hereby eliminated.
	Indicates street line hereby established.
	Indicates sidewalk and roadway treatment line hereby established or heretofore established and hereby retained.
284.15	Indicates dimension heretofore established and hereby retained.
448.72	Indicates dimension hereby established.
-106.04	Indicates dimension heretofore established and hereby eliminated.
13.52	Indicates elevation hereby established.
-21.27	Indicates elevation heretofore established and hereby eliminated.
32	Indicates sidewalk and roadway treatment dimension hereby established.
38	Indicates sidewalk and roadway treatment dimension heretofore established and hereby retained.
186.58	Indicates tie-in distance hereby established.
115.14	Indicates tie-in distance heretofore established and hereby retained.
16.28	Indicates tie-in distance heretofore established and hereby eliminated.
-21.27	Indicates elevation heretofore established and hereby eliminated.
22.10	Indicates elevation hereby established.
28.12	Indicates elevation heretofore established and hereby retained.
	U.S. Pierhead and Bulkhead Line
ELEVATIONS SHOWN ON THIS MAP ARE FOR TOP OF PAVEMENT AT CENTER LINE OF ROADWAY AND ARE REFERRED TO THE BELMONT ISLAND DATUM WHICH IS 2.265 FEET BELOW THE U.S.C.&G DATUM AT SANDY HOOK, NJ	



ENGLISH SCALE: 1 INCH = 50 FEET
0 50 100 150 200
METRIC SCALE: 1 CM = 6.00 METERS (19.68 FEET)
0 6.0 12.0 18.0 24.0

APPLICATION MAP
SHOWING THE ESTABLISHMENT
OF STREETS SOUTH
OF MAIN STREET ON
ROOSEVELT ISLAND

DATE
06/26/2012

SHEET
1 OF 2

DRAWN BY: A.Y.
CHECKED BY: S.E.M.



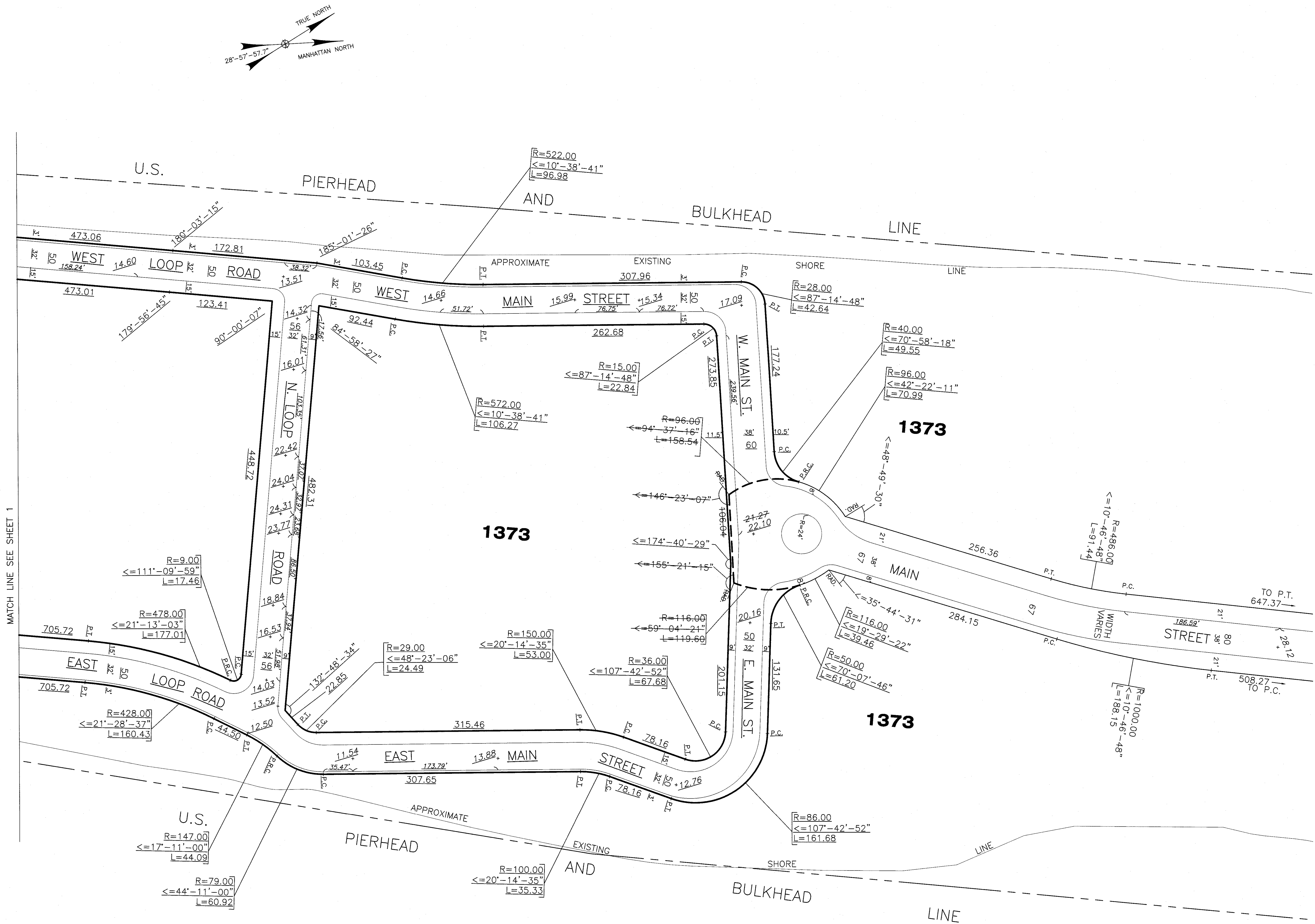
CORNELLNYC TECH
CITY MAP CHANGE

ROOSEVELT ISLAND, NEW YORK

APPLICANT:
CORNELL UNIVERSITY
300 DAY HALL
ITHACA, NY 14853
Tel: (607) 255-2364

ENGINEER:
PHILIP HABIB & ASSOCIATES
102 MADISON AVENUE
NEW YORK, NY 10016
Tel: (212) 929-5656

SURVEYOR:
GALLAS SURVEYING GROUP
171 CHURCH LANE
NORTH BRUNSWICK, NJ 08902
Tel: (732) 422-6700



APPLICATION MAP
SHOWING THE ESTABLISHMENT
OF STREETS SOUTH
OF MAIN STREET ON
ROOSEVELT ISLAND

DATE

06/26/2012

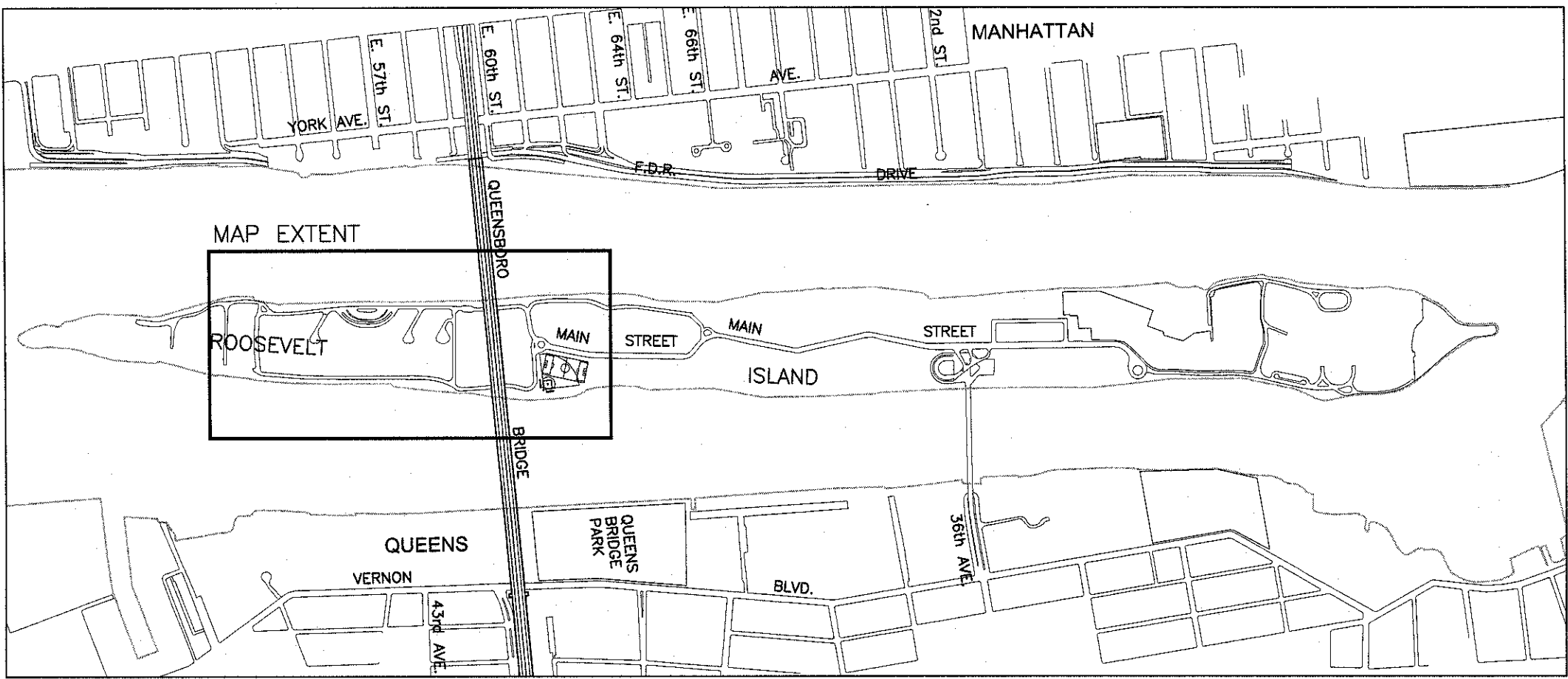
SHEET

2 OF 2

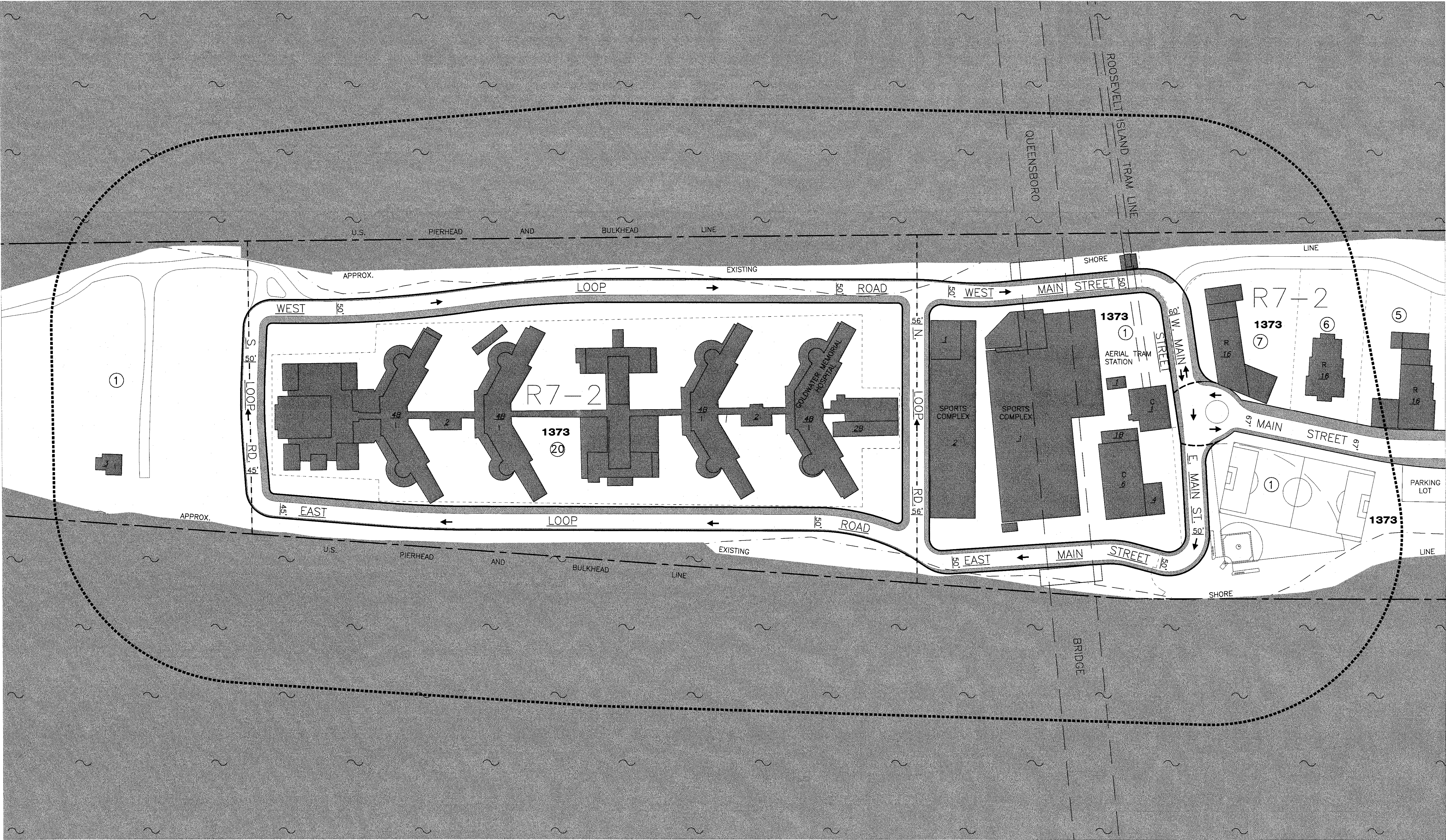
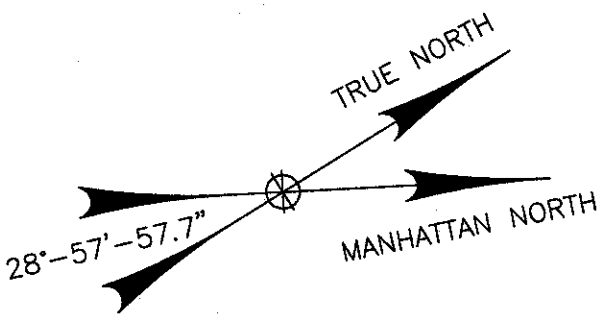
DRAWN BY: A.Y.
CHECKED BY: S.E.M.



ENGLISH SCALE: 1 INCH = 50 FEET
0 50 100 150 200
METRIC SCALE: 1 CM = 6.00 METERS (19.68 FEET)
0 6.0 12.0 18.0 24.0



LOCATION PLAN
NTS



LEGEND

R7-2 EXISTING ZONING
— STREET LINE RETAINED
- - - STREET LINE TO BE ELIMINATED
- - - STREET LINE PROPOSED TO BE ESTABLISHED
- - - 400' RADIUS
- - - BLOCK LINE

1373 BLOCK NUMBER
① LOT NUMBER
2 NUMBER OF BUILDING STORIES
4B NUMBER OF BUILDING STORIES WITH BASEMENT
← VEHICULAR FLOW

■ BUILDING FOOTPRINT
■ SIDEWALK
~ WATER
□ TAX LOT LINE

C COMMERCIAL
I INSTITUTIONS
M MANUFACTURING
R RESIDENTIAL
V VACANT

SCALE: 1" = 100'
0 50 100 200 Feet

CORNELLNYC TECH
CITY MAP CHANGE

ROOSEVELT ISLAND, NEW YORK

APPLICANT:
CORNELL UNIVERSITY
300 DAY HALL
ITHACA, NY 14853
Tel: (607) 255-2364

ENGINEER:
PHILIP HABIB & ASSOCIATES
102 MADISON AVENUE
NEW YORK, NY 10016
Tel: (212) 929-5656

SURVEYOR:
GALLAS SURVEYING GROUP
171 CHURCH LANE
NORTH BRUNSWICK, NJ 08902
Tel: (732) 422-6700

AREA MAP
SHOWING THE ESTABLISHMENT
OF STREETS SOUTH OF
MAIN STREET ON
ROOSEVELT ISLAND

DATE
06/26/2012

SHEET
1 OF 1

DRAWN BY: A.Y.
CHECKED BY: S.E.M.

