

# Roosevelt Island Aerial Tramway

## STATIONS DESIGN

# Roosevelt Island Station

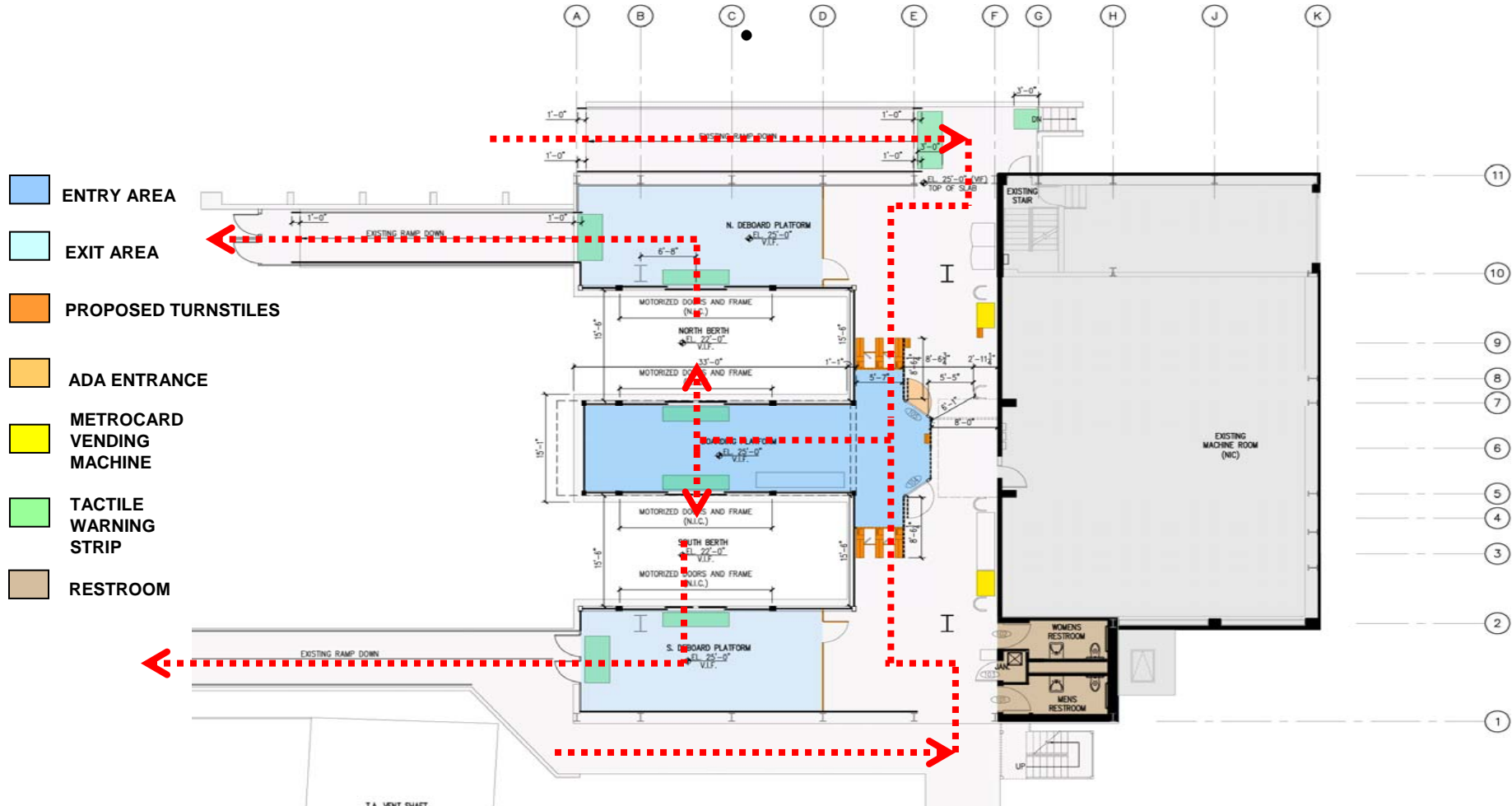
## Proposed Station



- STATION EXTERIOR IS IN GOOD CONDITION AND WILL REMAIN
- REPAINT THE EXTERIOR

# Roosevelt Island Station

## Proposed Floor Plan

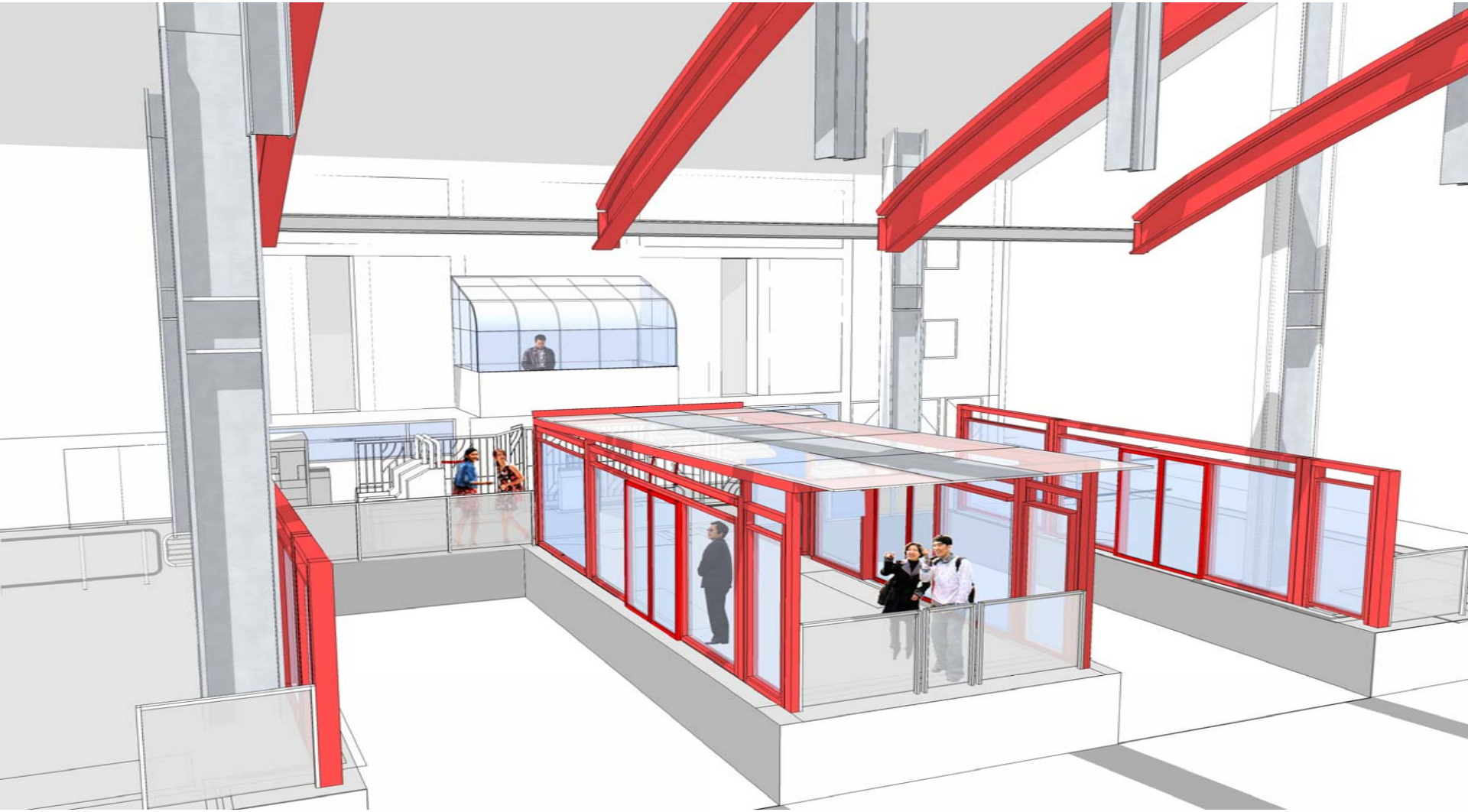


- IMPROVED CIRCULATION
- INCREASED PASSENGER WAITING AREA
- ADDITIONAL METROCARD TURNSTILE & ADA GATES
- NEW ADA COMPLIANT RESTROOMS
- IMPROVED STATION LIGHTING



# Roosevelt Island Station

## Proposed Waiting Area and Low Canopy



# Manhattan Station

## Proposed Station



- NEW MAIN STATION ROOF CONSISTING OF TRANSLUCENT ILLUMINATED PANELS AND SOLID PANELS
- RESTORED CONCRETE SURFACES

[illegible]

- 





# Manhattan Station

## Proposed Waiting Area and Low Canopy



- PLATFORM ENCLOSURE WILL PROVIDE WEATHER PROTECTION AND PASSENGER SECURITY

# Manhattan Station

## Proposed Station: Night Version

