



John Finley Walk ADA Ramps

Located at East 82nd and East 83rd
Streets, John Finley Walk
Borough of Manhattan

Community Board 8 Presentation
May 3, 2017
Parks Capital Design

Parks

GOALS

- Provide disabled accessibility to the John Finley Walk with ADA ramps at East 82nd and East 83rd Streets (Locations 1 and 2)
 - Pre-fabricated Black Powder Coated Galvanized Steel (Heavy Duty)
 - Location 1 with 33 LF of ramp with 2.0' grade change
 - Location 2 with 26 LF of ramp with 2.0' grade change
 - Bracket Arms on Metal Decking

CONSTRAINTS

- 3'- 6" ADA Clearance on ramp at 8% slope
- One landing for every turn
- 5' minimum DOT sidewalk clearance
- Clear access to private doors, yard gates, FDR Drive vents, underground utilities (manholes, vaults) and FDNY facilities

TOTAL BUDGET: \$100,000 (Mayoral Funded transfer from DDC 81st Street Pedestrian Bridge) FY 2017

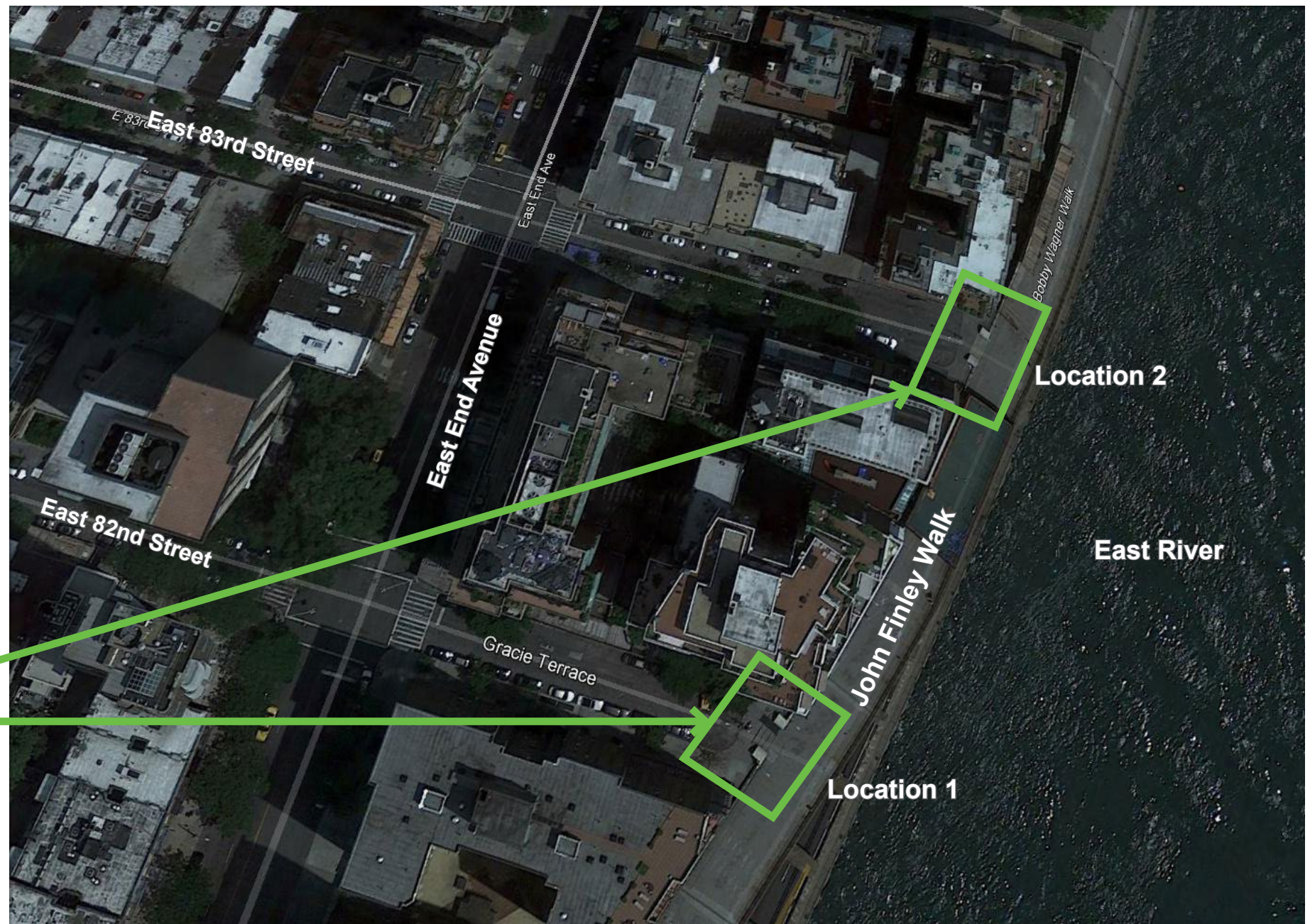
PROJECT SIZE: 1,134.24 SF

- Location 1 - 954 SF
- Location 2 - 180 SF





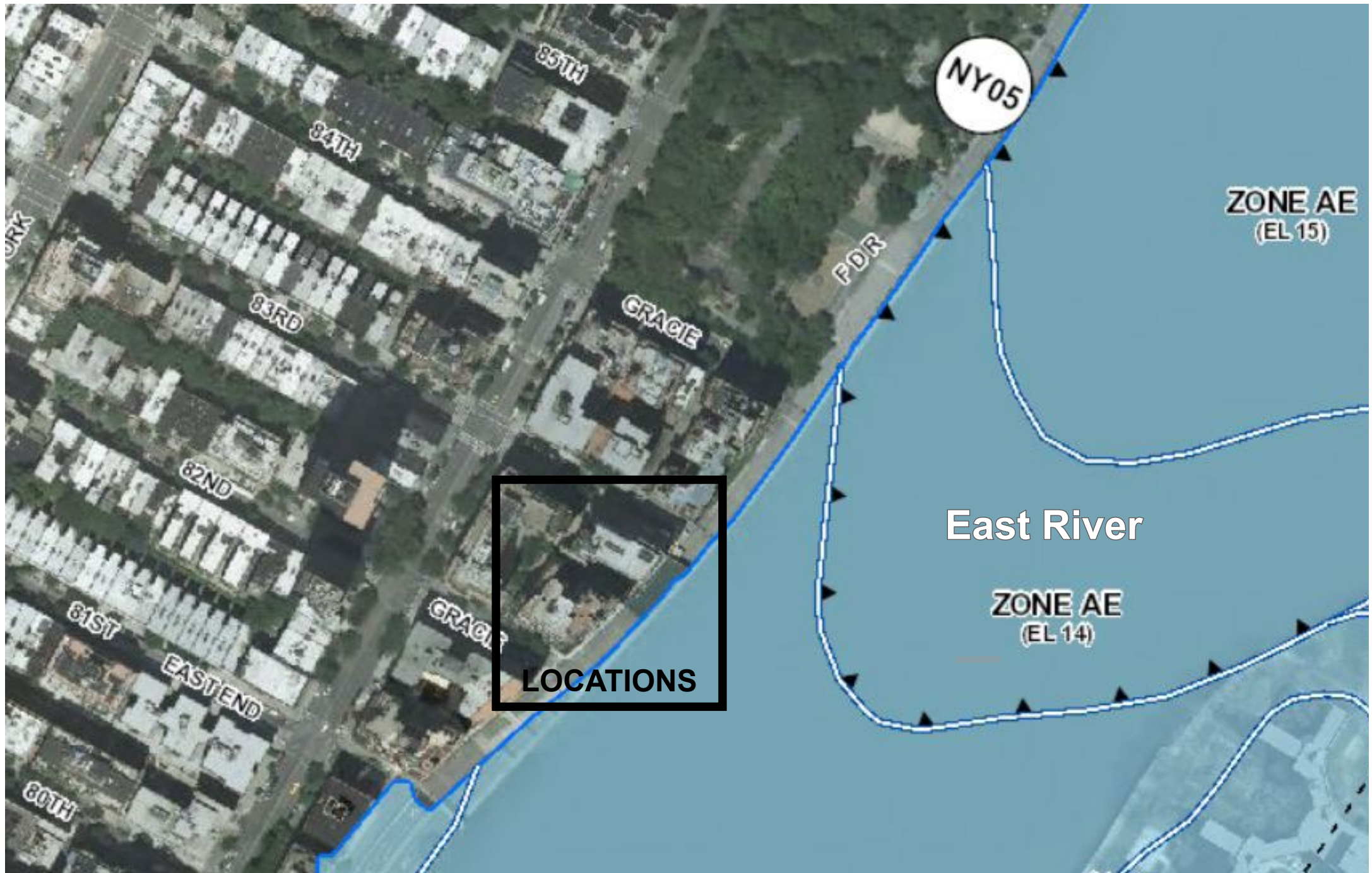
Neighborhood Location



Sites



ADA Ramps at East 82nd and East 83rd Streets | Site Locations



FLOOD HAZARD ZONES

- **ZONE A** - 1% annual-chance flood event. No Base Flood Elevation (BFE) exists.
- **ZONE AE** - 1% annual-chance flood event. BFE exists.
- **ZONE AO** - 1% annual-chance shallow flooding.
- **VE** - Areas along coasts subject to inundation by the 1% annual-chance flood event with additional hazards associated with storm-induced velocity wave action. BFE exists.
- ▨ **FLOODWAY** - watercourse reserved to discharge base flood.
- **ZONE X** - Moderate risk areas within the 0.2% annual-chance floodplain.

▲ **LIMIT OF MODERATE WAVE ACTION**

Base Flood Elevation (BFE) = 14'

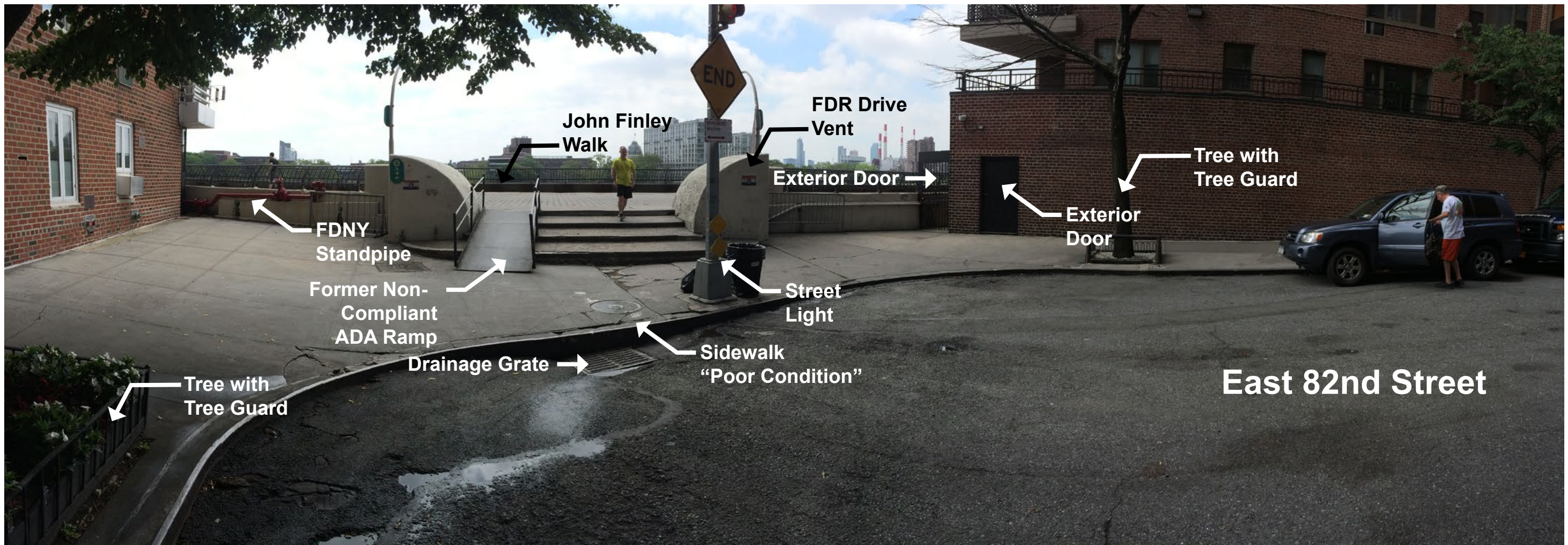




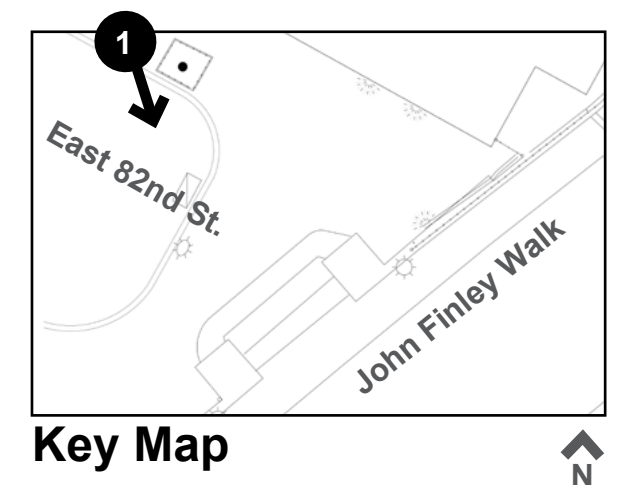
LAND USE CATEGORIES

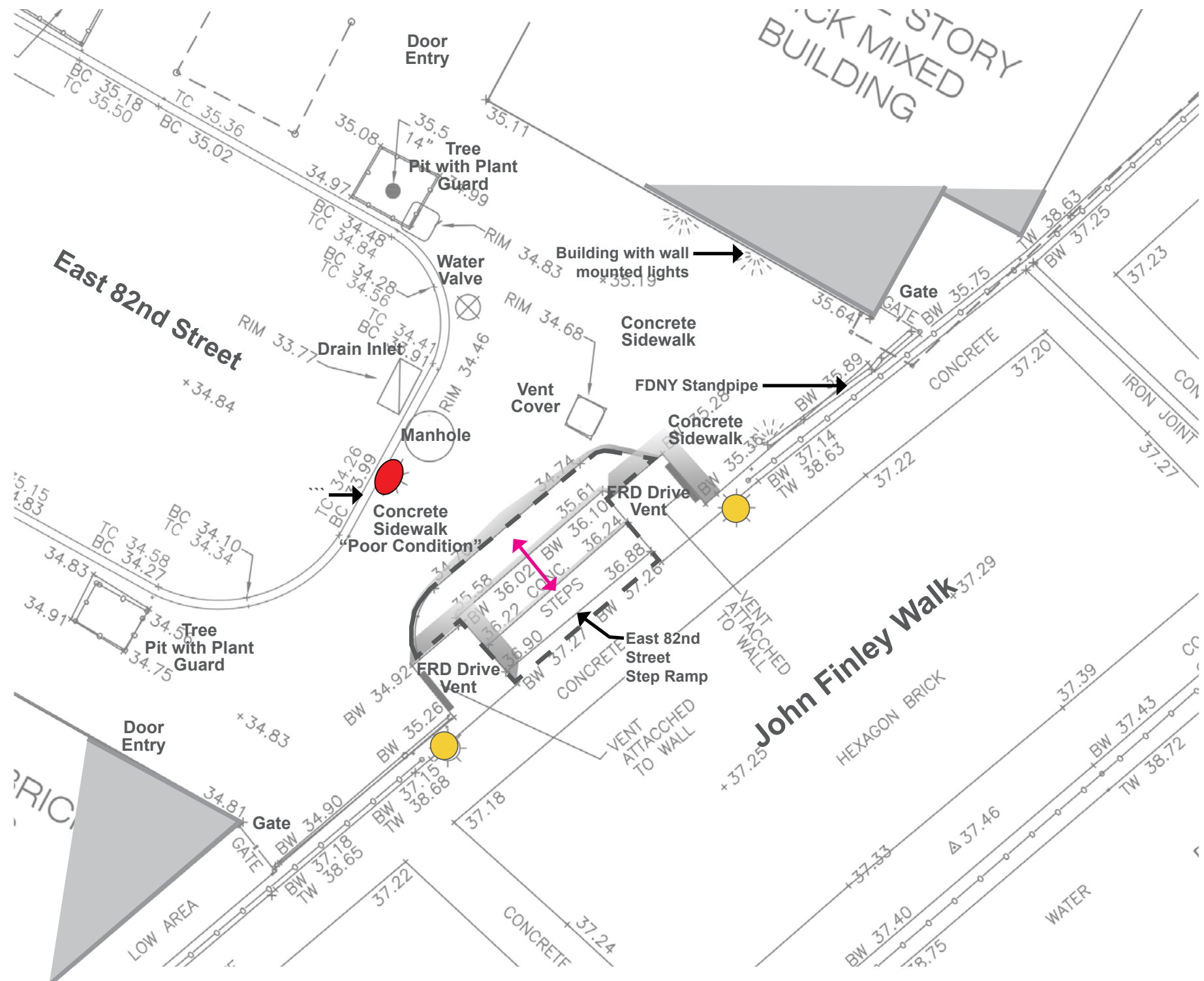
- 1 AND 2 FAMILY RESIDENTIAL
- MULTI-FAMILY RESIDENTIAL
- MIXED USE
- OPEN SPACE AND OUTDOOR RECREATION
- COMMERCIAL
- INSTITUTIONAL
- INDUSTRIAL
- PARKING
- TRANSPORTATION / UTILITIES
- VACANT LOTS





Site Photo 1 - Looking southeast from East 82nd Street at the East River Esplanade





- ### Legend
- Pedestrian Access
 - Street Light
 - Step Ramp Location
 - Esplanade Lightpole
 - Building or Structure



ADA Ramps at East 82nd and East 83rd Streets | Location 1 Existing Conditions

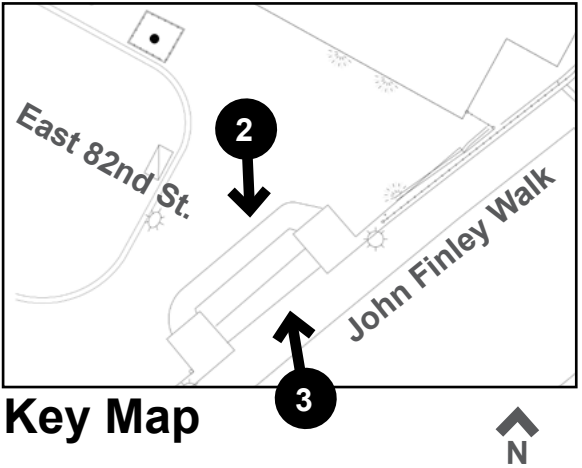


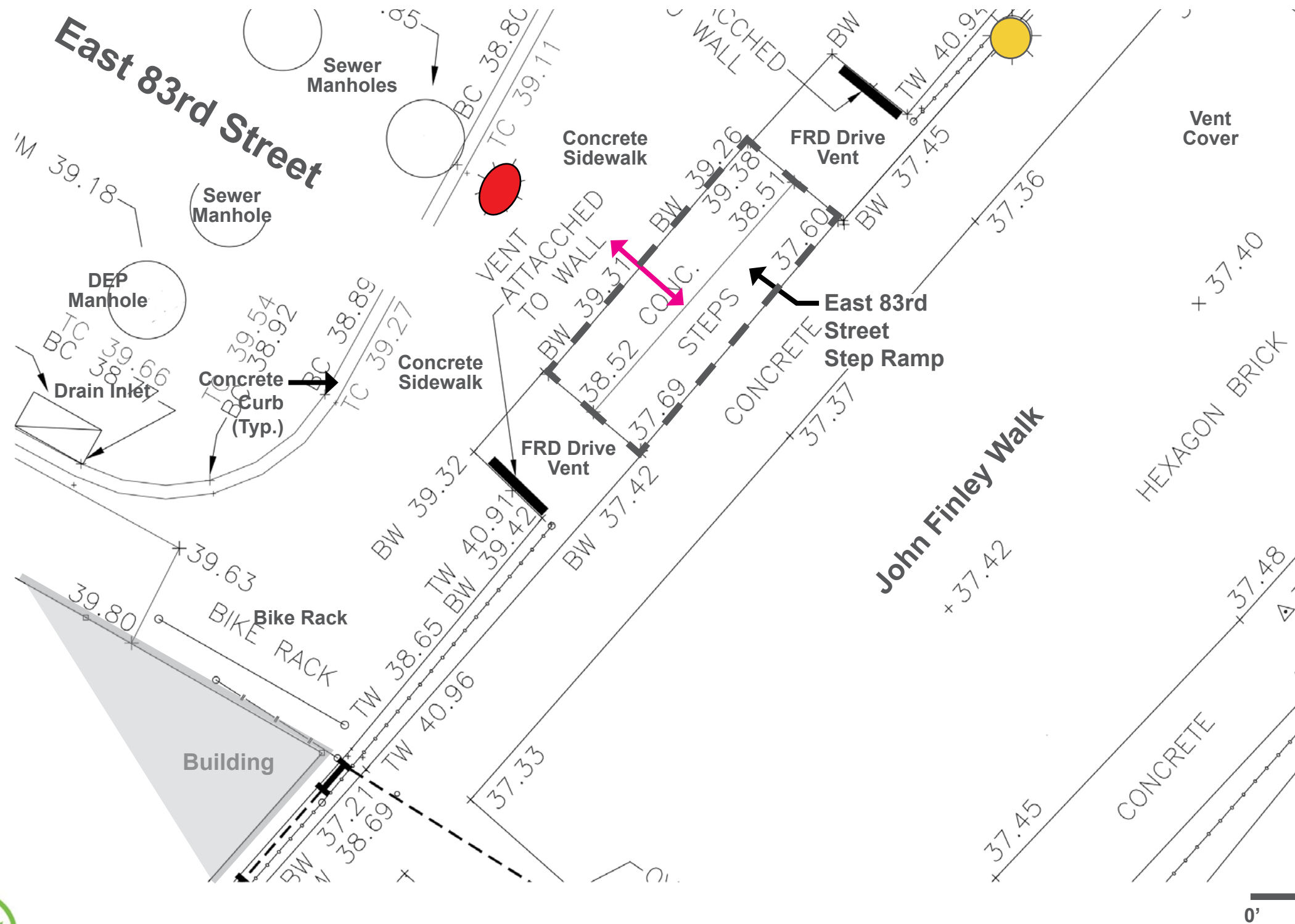


Site Photo 2 - Looking southeast at step ramp, ADA ramp, FDR Drive vent (right) and John Finley Walk








Site Photo 3 - Looking northwest at East 82nd Street sidewalk, ADA ramp and FDR Drive vent (right)





Legend

-  Pedestrian Access
-  Street Light
-  Step Ramp Location
-  Esplanade Lightpole
-  Building or Structure

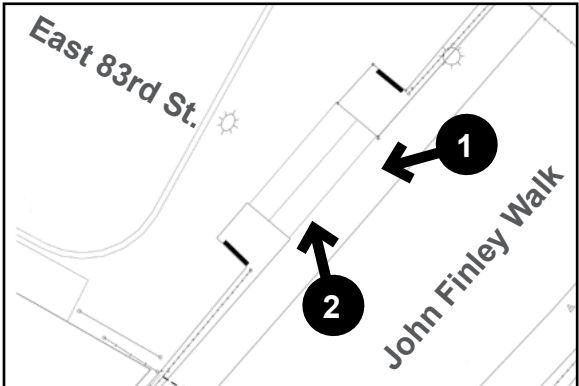




Site Photo 1 - Looking southwest at step ramp, FDR Drive vents and East 83rd Street



Site Photo 2 - Looking northwest at East 83rd Street, FDR vents and East 83rd Street sidewalk



Key Map

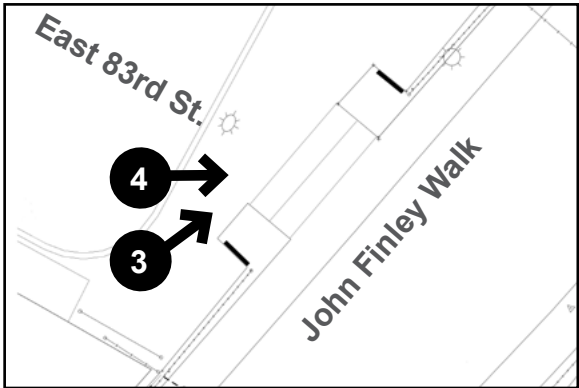




Site Photo 3 - Looking northeast at step ramp and FDR Drive vents



Site Photo 4 - Looking northeast at step ramp and John Finley Walk



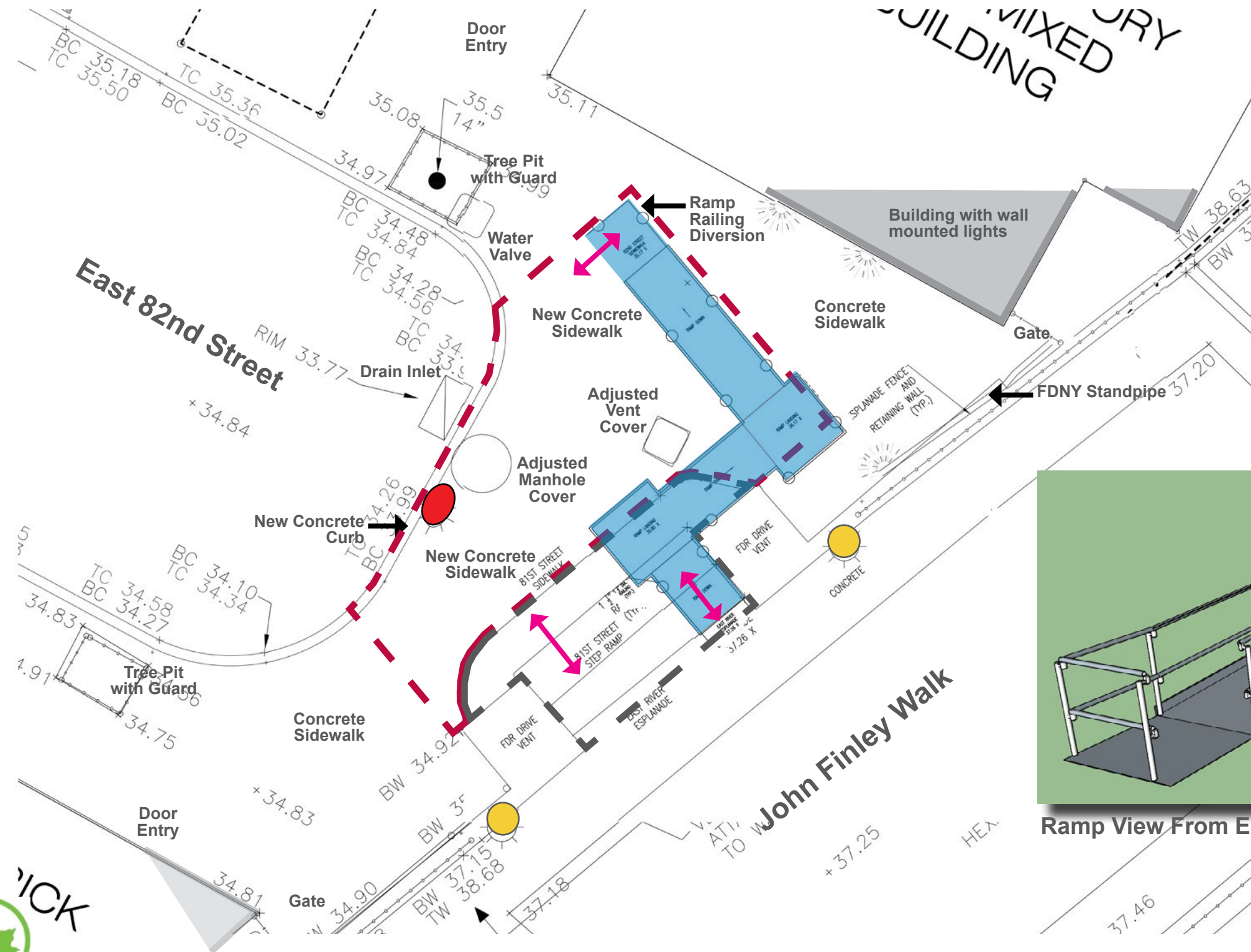
Key Map



ADA Ramps at East 82nd and East 83rd Streets | Location 2 Site Photos - (E 83rd St.)

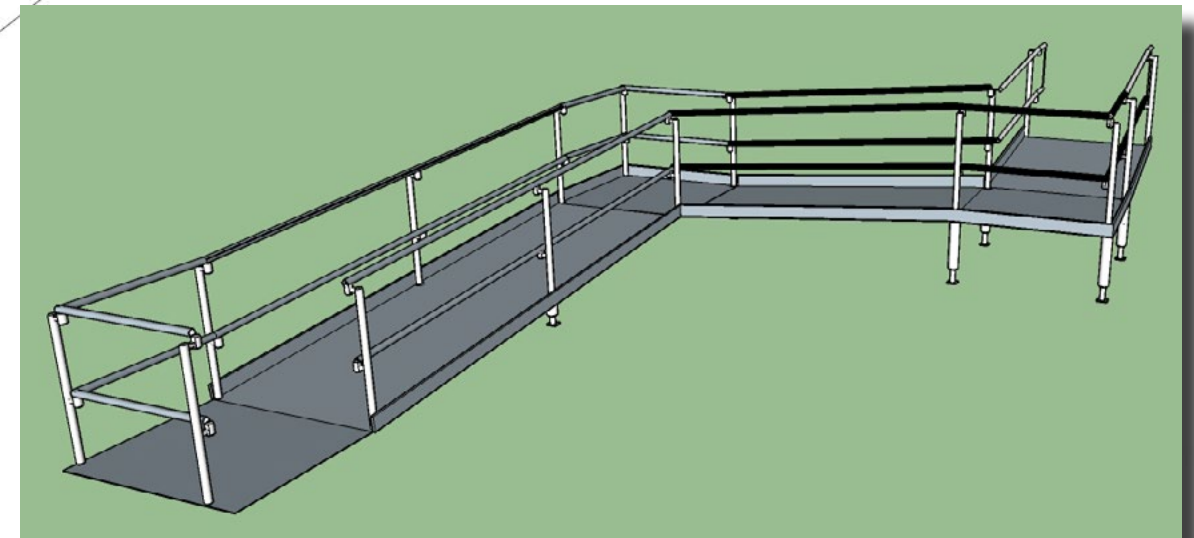


ADA Ramps at East 82nd and East 83rd Streets | Location 1 Option 2 - (E 82nd St.)



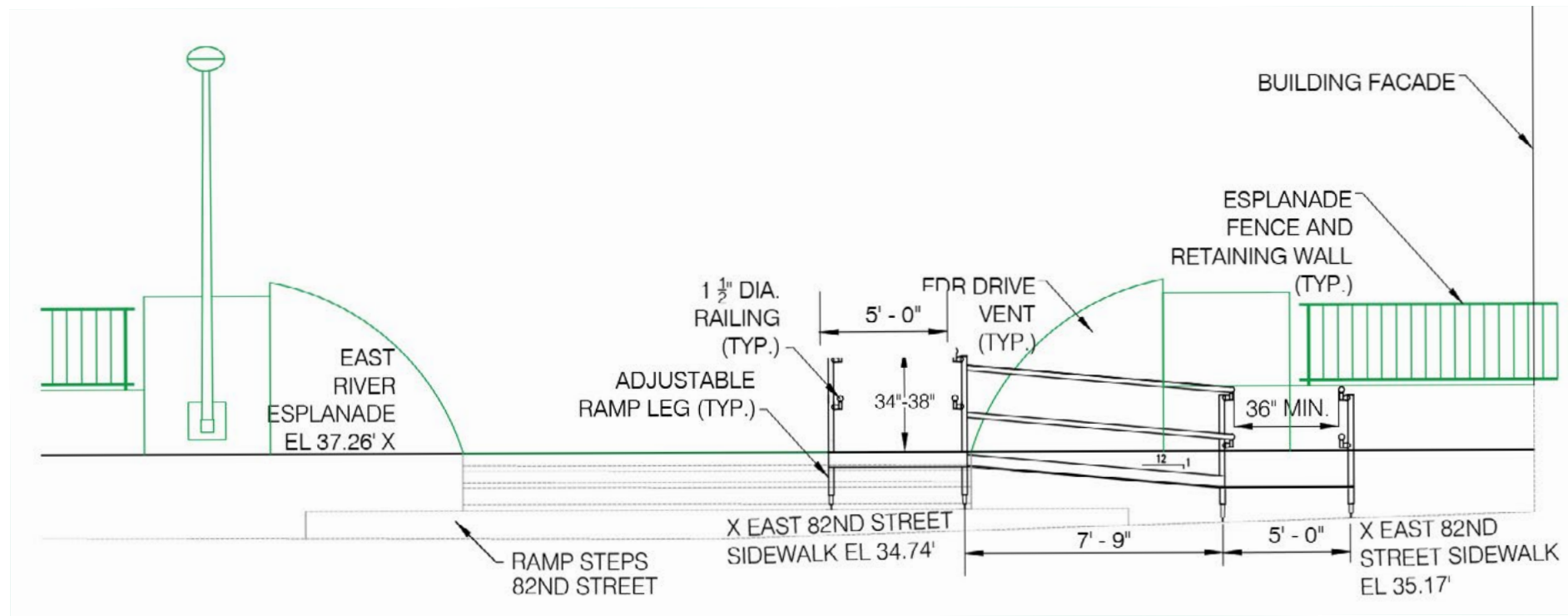
Legend

- Pedestrian Access
- Street Light
- New Concrete Sidewalk
- Step Ramp Location
- Esplanade Lightpole
- Building or Structure
- ADA Ramp

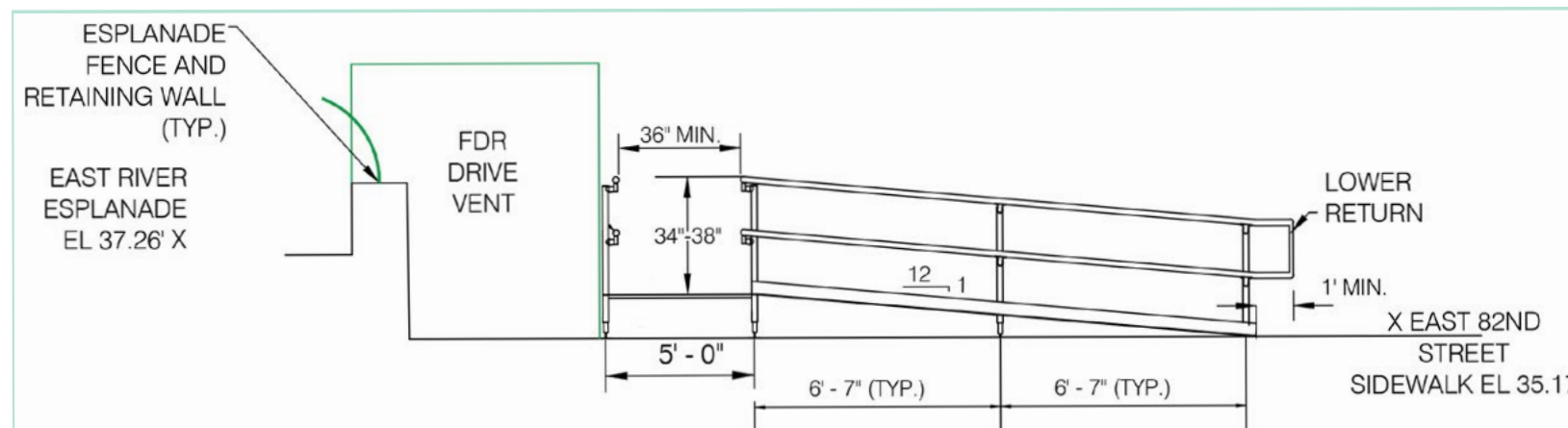


Ramp View From East 82nd Street



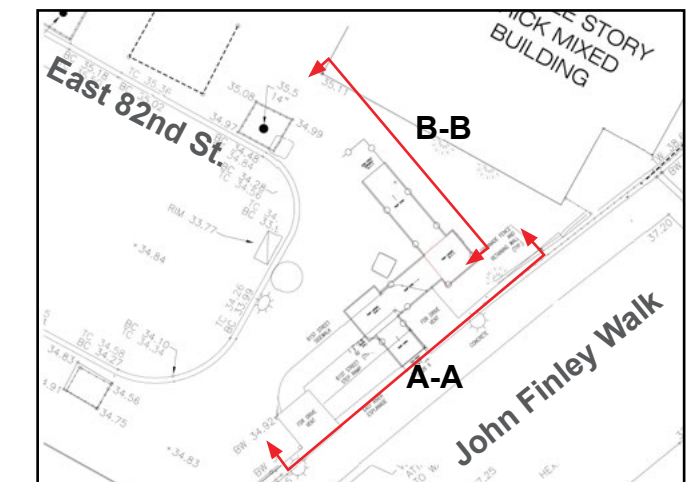


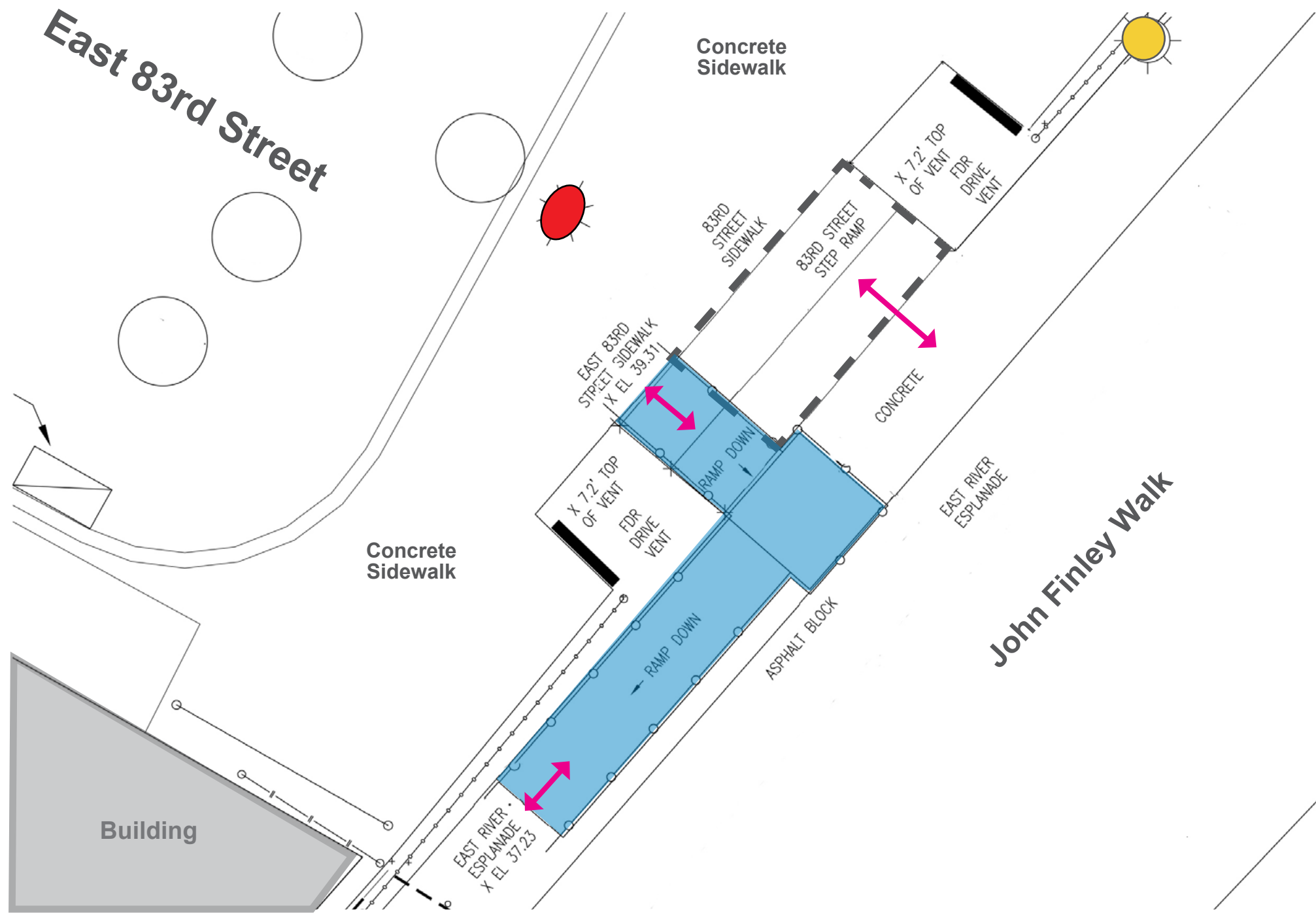
Section-Elevation A-A



Section-Elevation B-B

Key Map

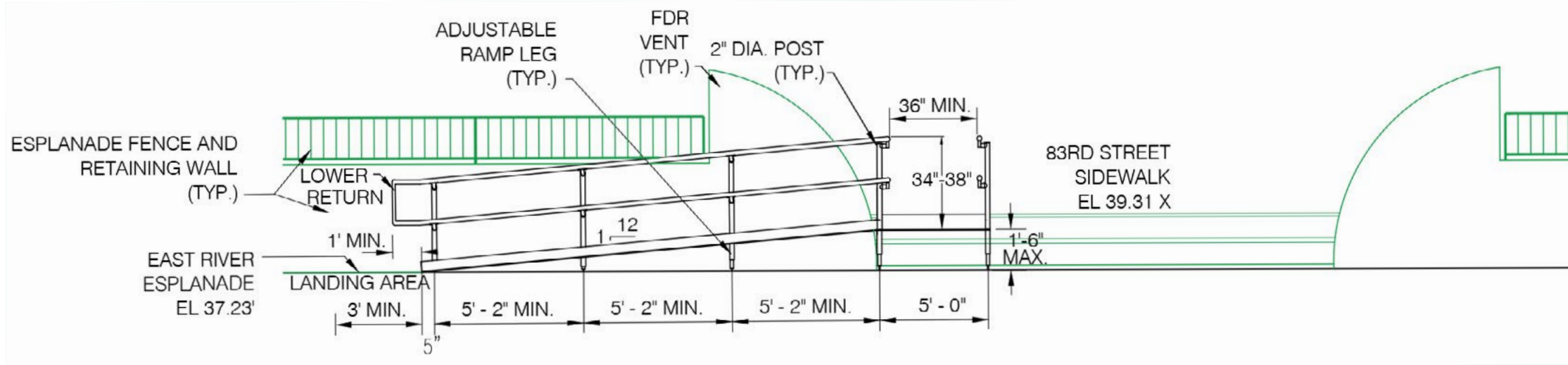




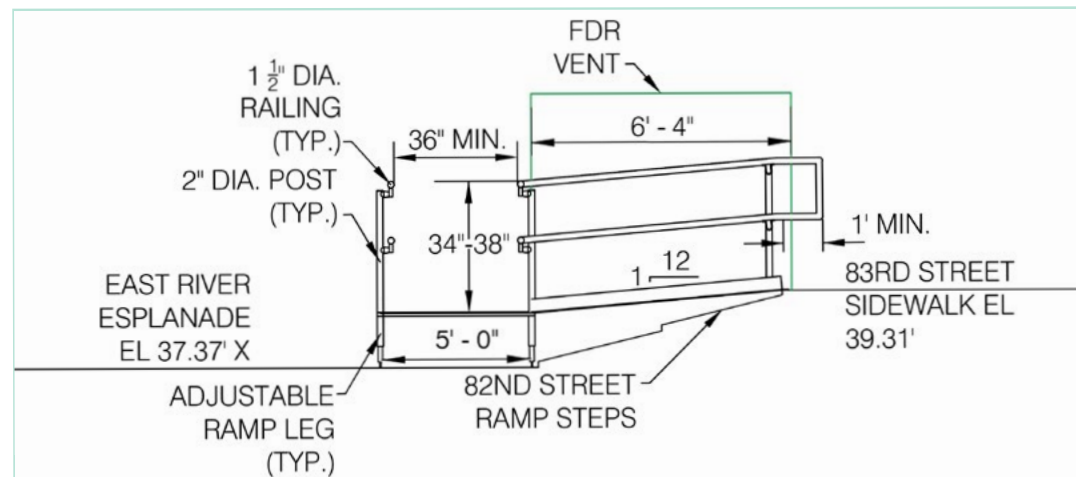
- Legend**
- Pedestrian Access
 - Street Light
 - New Concrete Sidewalk
 - Step Ramp Location
 - Esplanade Lightpole
 - Building or Structure
 - ADA Ramp



ADA Ramps at East 82nd and East 83rd Streets | Location 2 Proposed Plan - (E 83rd St.)

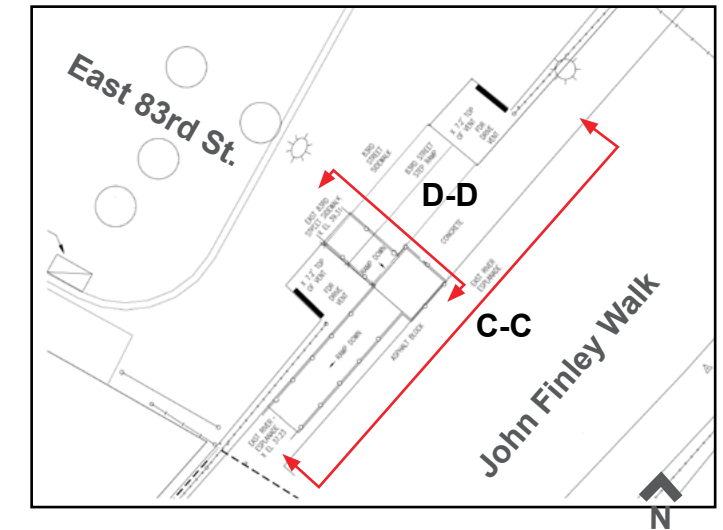


Section-Elevation C-C



Section-Elevation D-D

Key Map





Railings with Bracket Arms



Railing Posts without Bracket Arms



Metal Ramps