



CITYWIDE FERRY SERVICE

Roosevelt Island

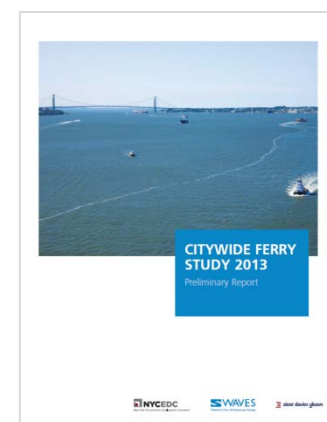
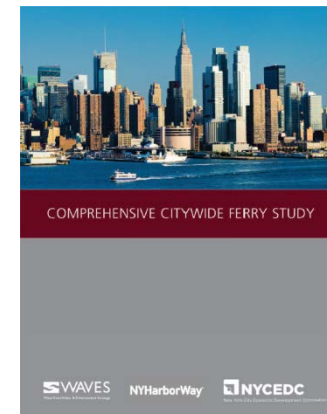


November 2015

How we got here

EDC has built experience in ferry operations and planning since 2008

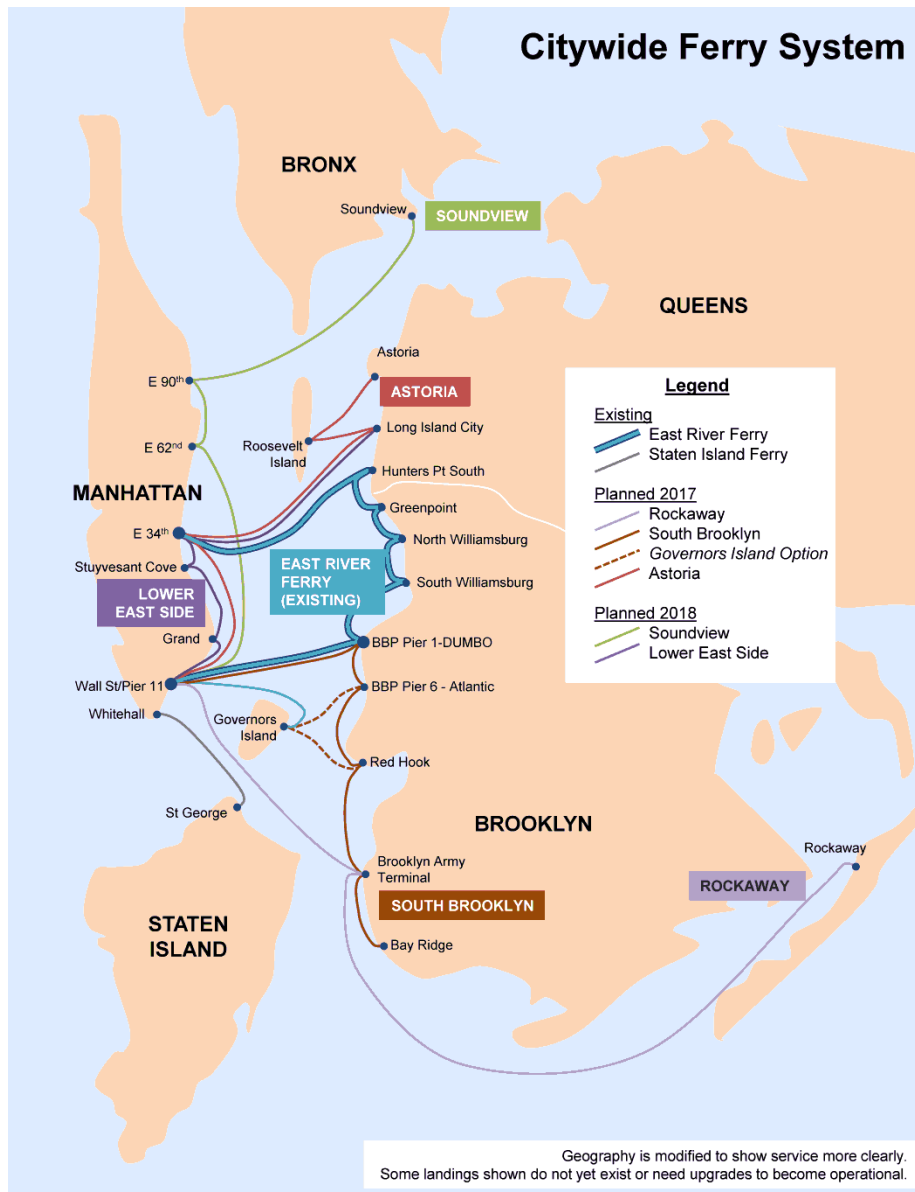
- 2008 First Rockaway Pilot
- 2010 Citywide Ferry Study
- 2011 East River Ferry (ERF) Pilot
- 2012 Rockaway Emergency Service
- 2013 Citywide Ferry Study (Preliminary)
- 2014 Begin ERF Long-term Operations
- 2014 Finalize ferry study and refine for implementation
- Feb 3, 2015 – Mayor announces Citywide Ferries by 2017



Project Goals

- 1. Create a SAFE ferry system**
- 2. Launch three routes by 2017**
(Rockaway, Astoria, and South Brooklyn)
- 3. Launch remaining two routes by 2018**
(Lower East Side, Soundview)
- 4. Ensure continuity of the East River Ferry service**
- 5. Create a unified system focused on customer experience**

Project Overview



■ Astoria Route (2017)

- Astoria (New)
- Long Island City (New)
- Roosevelt Island (New)
- E. 34th Street (Upgrade)
- Wall Street/ Pier 11 (Upgrade)

■ Service

- 6 Routes (5 new routes + ERF)
- \$2.75 fare, same as subway/bus fare but not MetroCard integrated

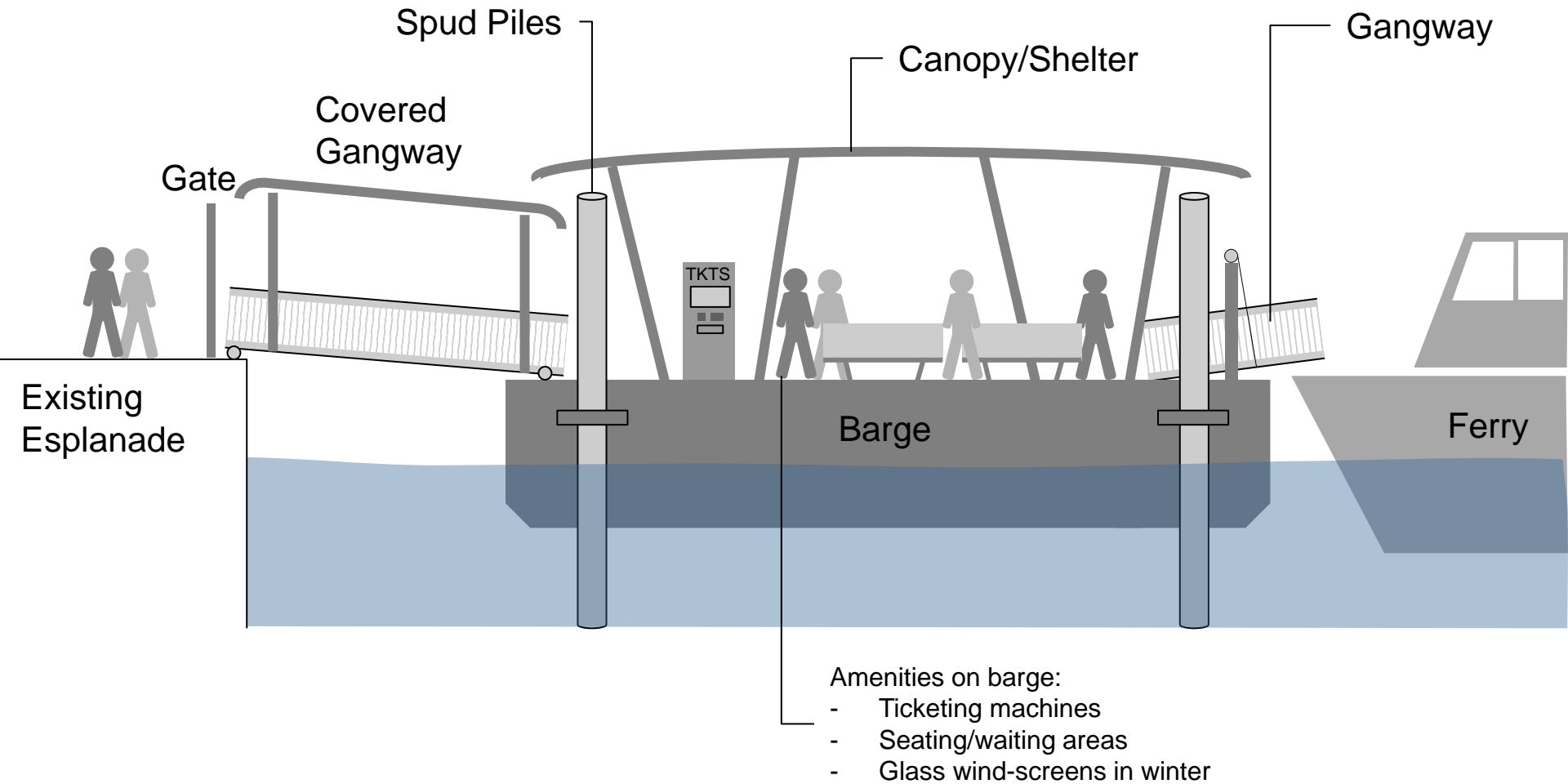
■ Landings

- 21 Landings served
 - 10 new landings
 - 5 reconfigured/upgraded

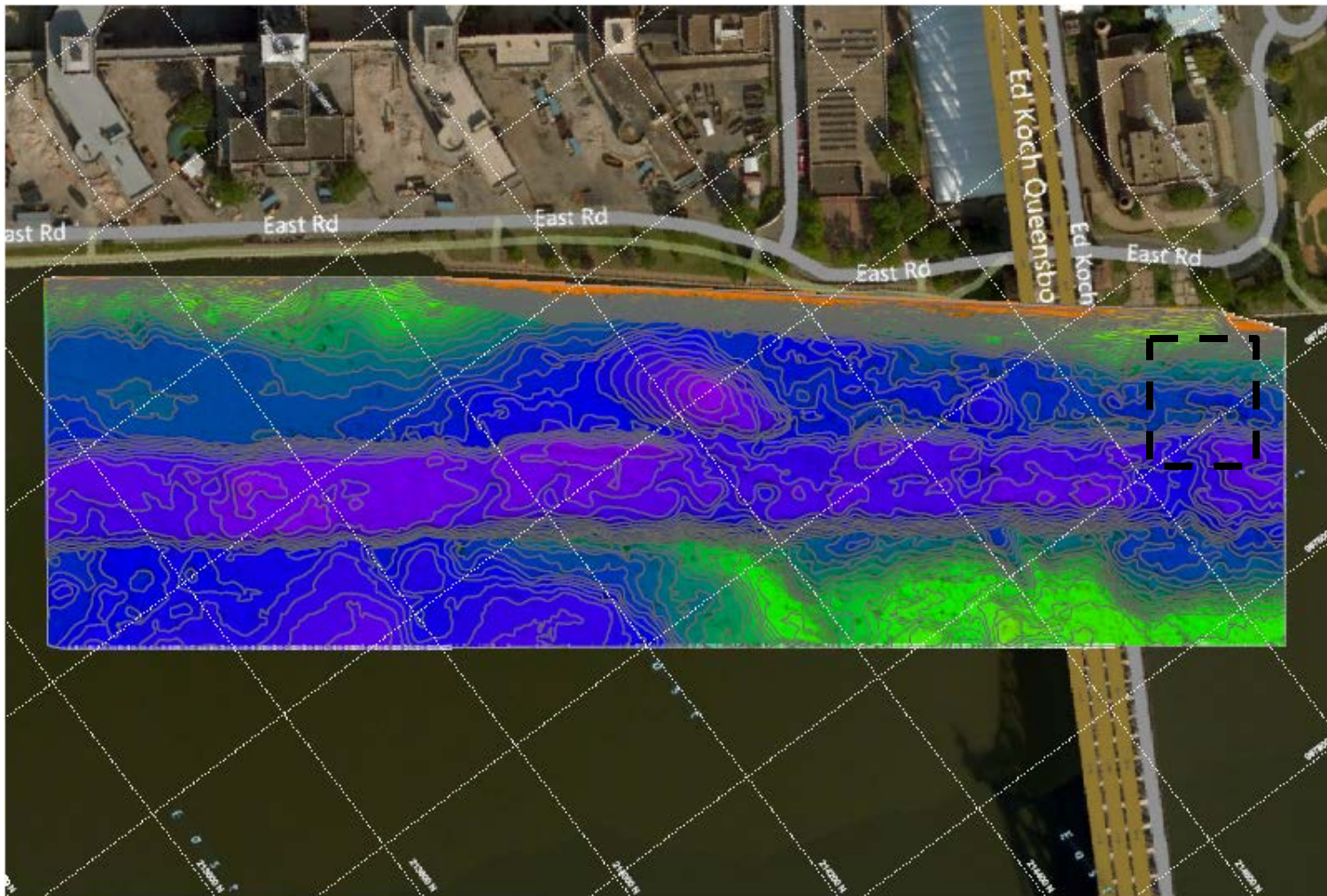
■ Funding

- \$55M in City capital for barges, gangways and infrastructure needs
- City and EDC working together to budget for operating expenses

Ferry Landings



Technical Studies: Roosevelt Island



1 HYDROGRAPHIC SURVEY MAP • ROOSEVELT ISLAND EAST SIDE
SCALE: 1" = 100'

VICINITY MAP

LEGEND

1. THE BATHYMETRY DEPICTED ON THIS DRAWING REPRESENTS THE RESULTS OF A SURVEY PERFORMED BY SEAMON ON MARCH 31 THROUGH APRIL 3, 2015 AND CAN ONLY BE CONSIDERED TO INDICATE THE GENERAL CONDITIONS EXISTING AT THAT TIME.

2. THE SURVEY DATA WAS COLLECTED USING A:

- ECHOSOUNDER • HORNB • 400 kHz MULTIBEAM
- POSITIONING AND MOTION • 800 SYSTEMS CHIRP
- SOUND VELOCITY SENSORS • BENTLEY CASTAWAY CTD AND AML SOUND VELOCITY SENSOR

3. HORIZONTAL DATUM: NEW YORK STATE PLANE LONG ISLAND ZONE, NAD 1983

4. VERTICAL DATUM: NAVD 1986

5. AERIAL IMAGERY SHOWN IS FOR ORIENTATION PURPOSES ONLY.

NO.	DATE	DESCRIPTION	BY	CHK

NYCEDC
New York City Economic Development Corporation

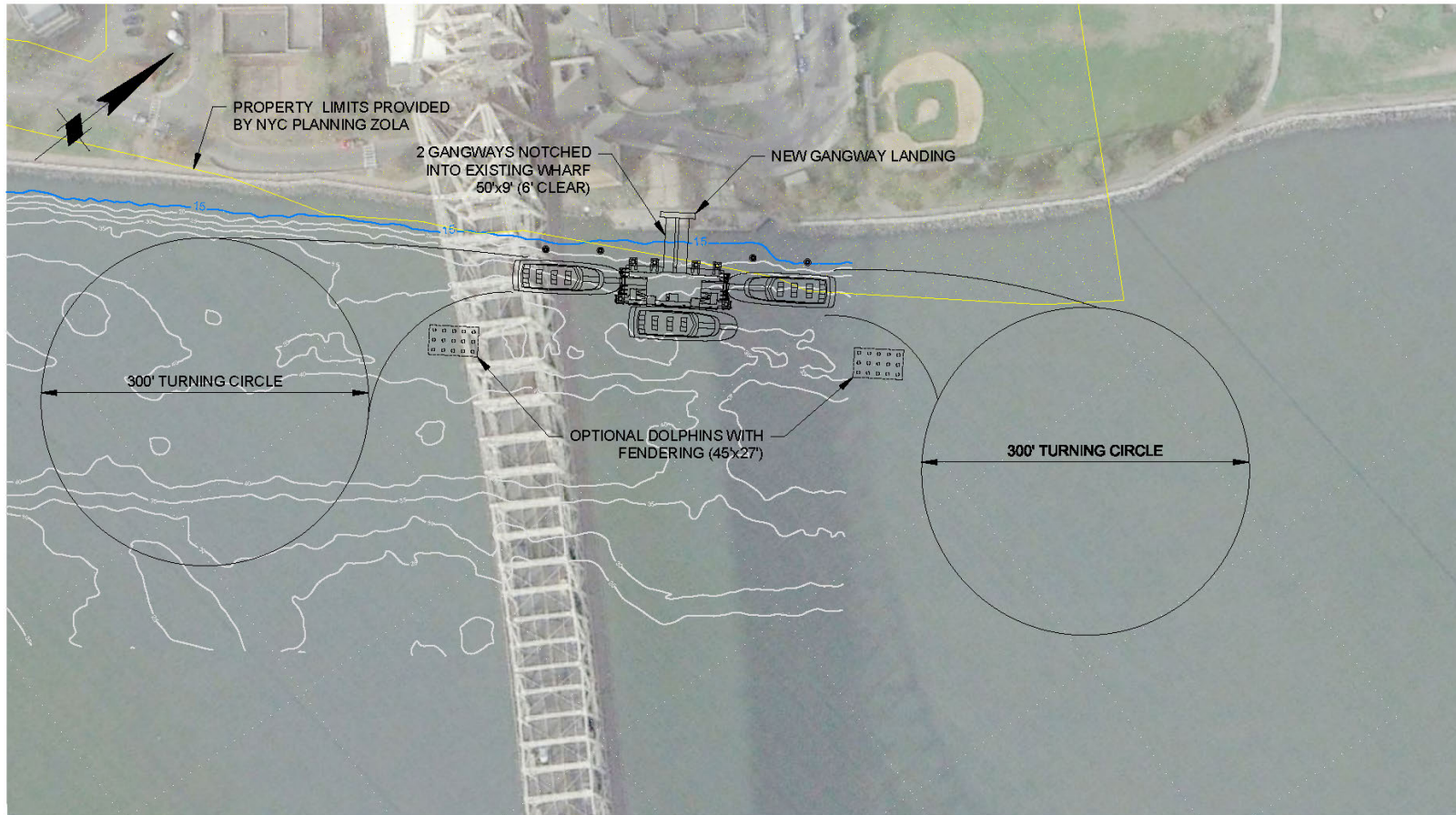
COWI Marine North America
A Division of COWI Group
200 West Street, Suite 1000
New York, NY 10038
Tel: (212) 607-1100
Fax: (212) 607-1101

PROJECT NO.: NYCEDC 09-011 MARITIME ENGINEERING FERRY LANDING DESKTOP STUDY

SHEET NO.: HYDROGRAPHIC SURVEY ROOSEVELT ISLAND - EAST SIDE, MANHATTAN SHEET 1 OF 2

DATE	BY	CHECKED	APPROVED
04/03/15	AD67713	GS23	

Landing Conceptual Design: Roosevelt Island



80' 0' 80' 160'

NOTES:

1. BARGE SHOWN AS 90' x 35'
2. VESSEL SHOWN AS 100' x 30'
3. WATER DEPTHS GIVEN IN NAVD88
4. MINIMUM WATER DEPTH FOR VESSEL OPERATION IS -15' NAVD88
5. AERIAL IMAGE PROVIDED BY GOOGLE EARTH



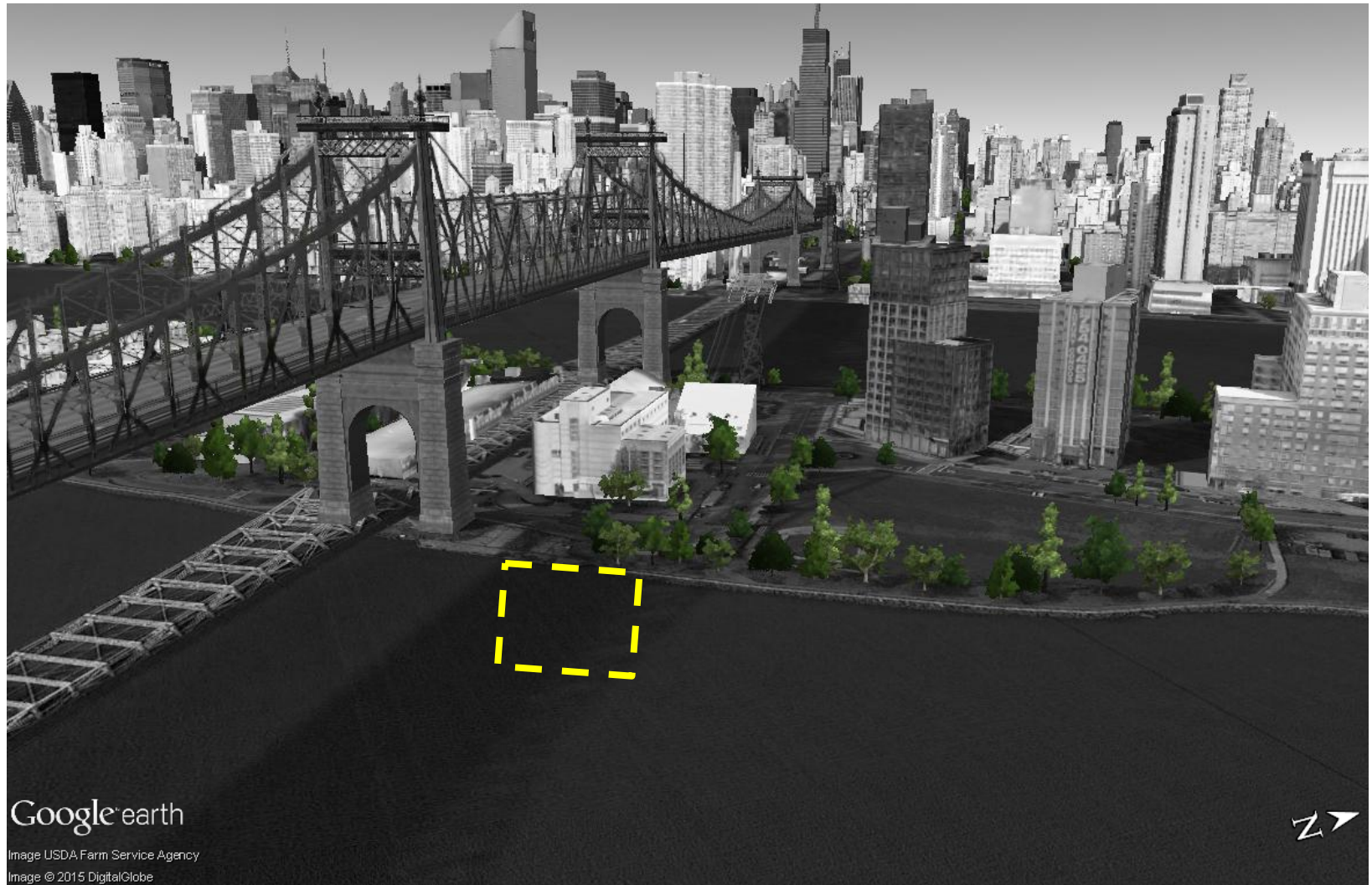
529 5TH AVENUE, 14TH FLOOR NEW YORK, NY 10017 212-768-7454

Designed By: JOSHUA STENER	Date: 2015-05-27	Rev: 1
Dwn By: JPS	Chd By: M&N Project No. 8668	
Reviewed By: TED BELL	Drawing Code:	
Submitted By: MOFFATT & NICHOL	Drawing Scale: 1"=80'	
	Plot Scale:	


NYCEDC CITYWIDE FERRY SERVICE
TASK 2 - SITE LAYOUT S

Q007
ROOSEVELT ISLAND
OIL DOCK

Ferry Landing Site Location



Next Steps

- **Community outreach: Summer 2015 (ongoing)**
 - **Environmental review: Fall 2015**
 - **Service operator selection: Winter 2015**
 - **Permitting: Winter 2015/16**
 - **Landing design and construction: Beginning 2016**
-
- **For more information on upcoming meetings and status updates, visit us at: www.nycedc.com/ferry**
  **@CitywideFerry**